

Application Note

Controlling Inrush Current with Slew Rate Control using Dialog Load Switches

AN-CM-226

Abstract

This application note describes the benefits of controlling inrush current with slew rate control using Dialog load switches.

Controlling Inrush Current with Slew Rate Control using Dialog Load Switches

Contents

Abstract	1
Contents	2
Figures	2
Terms and Definitions	3
1 References	3
2 Introduction	4
3 Inrush Currents	4
4 Enhanced Product Quality due to Inrush Current Control	4
5 Control Inrush Current with Dialog IPS Parts	5
6 Test and Measurement Setup and Schematic	6
6.1 Theory of Operation (Circuit A)	7
6.2 Theory of operation (Circuit B).....	8
7 Results	8
8 Conclusion	8
Revision History	9

Figures

Figure 1: No Slew Rate Control.....	5
Figure 2: Slew Rate Control Implemented	6
Figure 3: The schematic of the two test setups utilized to obtain data	7

Controlling Inrush Current with Slew Rate Control using Dialog Load Switches

Terms and Definitions

MOSFET	metal-oxide-semiconductor field-effect transistor
IPS	integrated power switch
RF	radio frequency

1 References

- [1] [SLG59M1717V](#), Datasheet, Dialog Semiconductor

Controlling Inrush Current with Slew Rate Control using Dialog Load Switches

2 Introduction

Electronic products often utilize high side P-channel MOSFET's to manage power usage by turning on and off power to sections of circuitry. For example, in a battery powered RF device, an RF power amplifier and associated circuitry would be energized only when transmitting RF energy. As a result of controlling power to sections of circuitry, inrush currents will occur when the circuitry is energized. Left unchecked, inrush current can detrimentally affect the quality, reliability and performance of electronic products by causing voltage transients at the output of battery systems, switching and linear regulators. Low power products such as battery powered devices typically have low quiescent current linear voltage regulators that can be negatively affected by inrush currents due to their low regulation bandwidth. The output voltage of lithium battery systems can also be negatively affected by inrush currents due to their varying output resistance and possible passivation. Lower temperatures can exacerbate this effect even more due to the increased output resistance. These unwanted effects can cause erratic product behaviors such as micro-controller resets, perturbation of oscillators, and negative effects on analog and digital circuitry. The use of Dialog load switches will control the inrush currents by design thus avoiding the negative effects associated with these inrush currents.

3 Inrush Currents

Inrush currents are caused when capacitors are charged during initial application of voltage. The slew rate of the voltage being applied to the capacitance and the value of the capacitance will determine the inrush current as follows:

The inrush current can be expressed as $I_{\text{INRUSH}} = C_{\text{LOAD}} \times \frac{dv}{dt}$ where C_{LOAD} is the circuit capacitance being charged, and $\frac{dv}{dt}$ is the rate of change of the voltage being applied. Thus as an example, if the capacitance value equals 10 uF and the rise time of the voltage being applied is 5 V/us, then the inrush current equals $10 \times 10^{-6} \times \frac{5}{10^{-6}} = 5$ amps.

4 Enhanced Product Quality due to Inrush Current Control

Unchecked large inrush currents can negatively affect the quality of electronic products. Inrush currents will vary from product to product due to varying component characteristics, aging, and temperature variations. If inrush currents are not controlled by design, then it is possible a percentage of shipped products will be problematic, resulting in field returns and unwanted associated costs. The steps necessary to control inrush current involve circuitry that controls the slew rate of the voltage being applied to sections of circuitry being energized. Dialog IPS parts incorporate circuitry that provide a programmable slew rate. For example, if the slew rate is programmed to a value of 1 V/ms, then the resulting inrush current for a capacitor with a value of 10 uF would be $10 \times 10^{-6} \times \frac{1}{10^{-3}} = 0.01$ amps or 10 mA.

Below is an oscilloscope image showing the transient inrush current (yellow trace-2 A/div) without the use of slew rate control. Note the resulting 0.7 V voltage dip (blue trace 1 V/div) at the power source which in this case is a lithium battery system (3.6 V). The peak inrush current is 9.2 amps. The high side switch was implemented with a P-channel MOSFET as the series pass element. This is a very common method used for implementation of a high side power switch that controls the power of sections of circuitry. The white trace-2 V/div is the voltage being applied to the load which consists of a 15 uF capacitor.

Controlling Inrush Current with Slew Rate Control using Dialog Load Switches

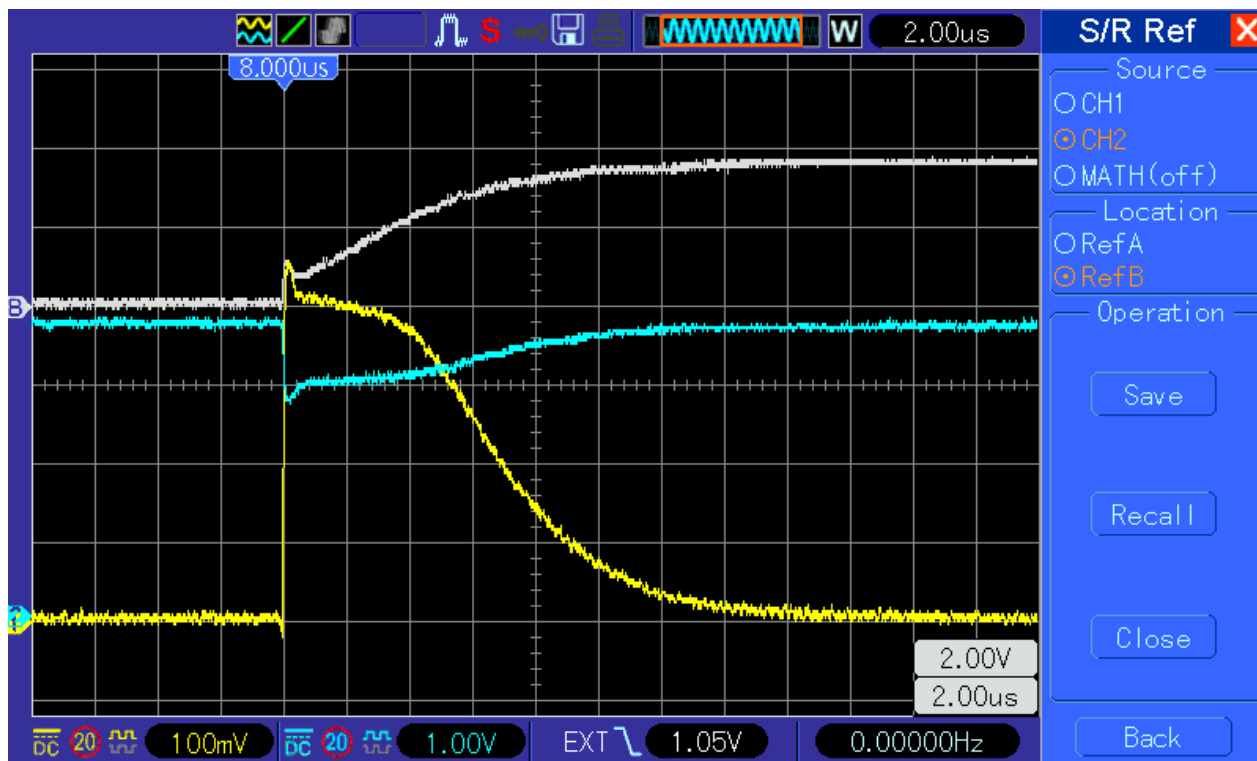


Figure 1: No Slew Rate Control

$C_{LOAD} = 1.5 \mu\text{F}$, $V_{IN} = 3.6 \text{ V}$, $R_{LOAD} = \text{no load}$

5 Control Inrush Current with Dialog IPS Parts

Dialog high side power switch solutions utilize a programmable controlled slew rate when the switch is enabled. The use of a controlled slew rate on a high side switch will substantially reduce the inrush currents that are a result of energizing sections of circuitry that utilize bulk and decoupling capacitors. Controlling these inrush currents by design will eliminate the negative effects of these large unwanted transient currents.

Below is an oscilloscope image showing the transient inrush current with the use of slew rate control. The peak current (blue trace-5 mA/div) is a constant 10 mA. The high side switch is a Dialog SLG59M1717V integrated power switch. As compared to the above example which shows a peak inrush current of 9.2 A, the 10 mA achieved with the use of the Dialog SLG59M1717V part will cause far less perturbation to the power system. Note the voltage ramp (yellow trace-1 V/div) being generated by the Dialog SLG59M1717V integrated power switch. The white trace is the battery voltage (AC coupled-10 mv/div) showing only a 5 mV dip.

Controlling Inrush Current with Slew Rate Control using Dialog Load Switches

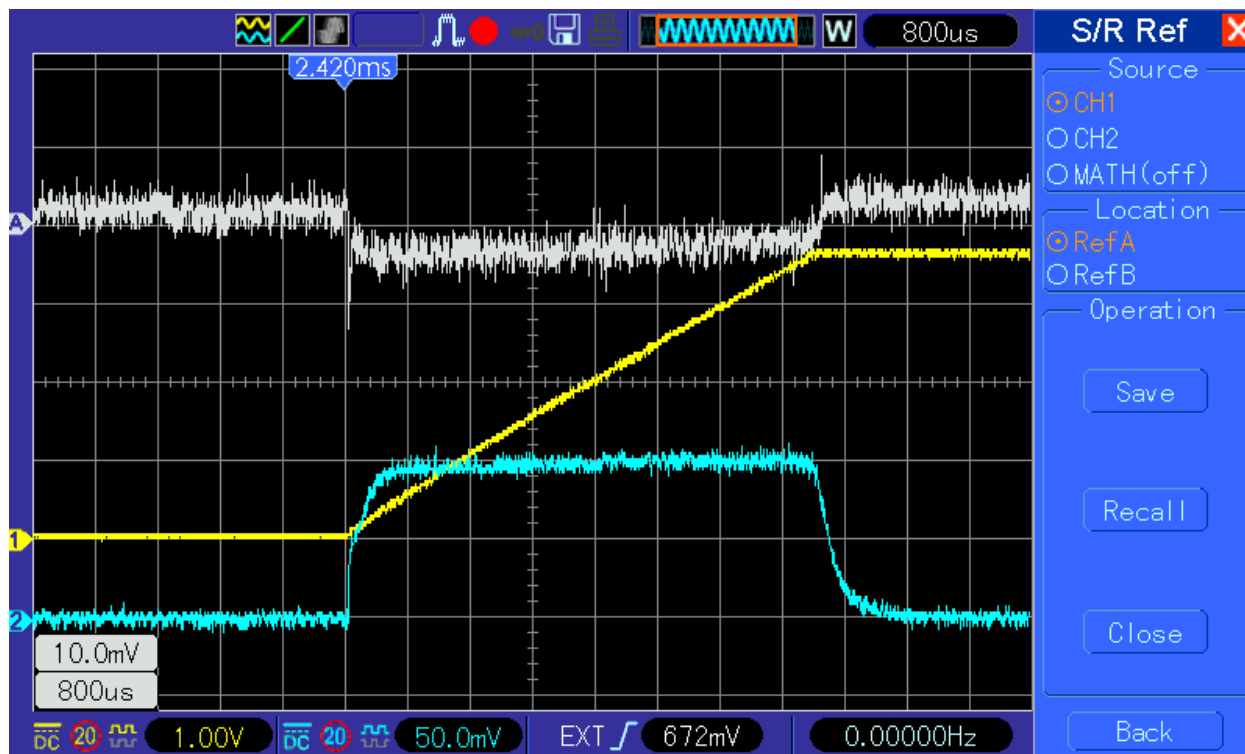


Figure 2: Slew Rate Control Implemented

SLG59M1717V evaluation board, $C_{SLEW} = 22 \text{ nF}$, $C_{LOAD} = 15 \mu\text{F}$, $V_{DD} = V_{IN} = 3.6\text{V}$, $R_{LOAD} = \text{no load}$

6 Test and Measurement Setup and Schematic

The following is the schematic of the two test setups utilized to obtain data. Circuit A was used to measure inrush current without slew rate control. Circuit B was used to measure inrush current with slew rate control using the Dialog SLG59M1717V evaluation board.

Controlling Inrush Current with Slew Rate Control using Dialog Load Switches

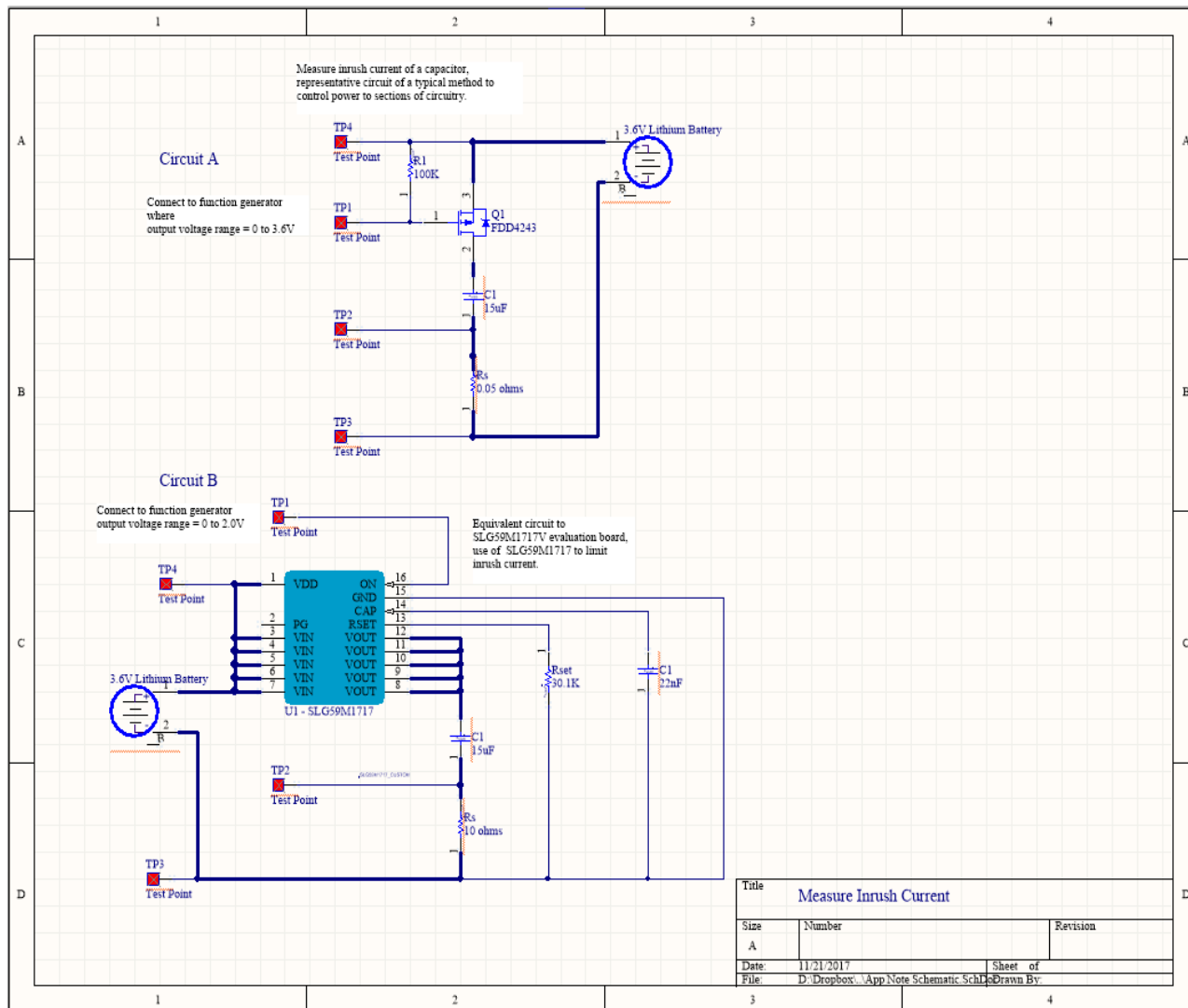


Figure 3: The Schematic of The Two Test Setups Utilized To Obtain Data

6.1 Theory of Operation (Circuit A)

The function of Circuit A is to measure inrush current into C1. The value of C1 was chosen to be 15uF. The use of a P-Channel MOSFET is typical for controlling the power to sections of circuitry. Rs is utilized to convert the inrush current to a voltage that can be measured with an oscilloscope. The inrush current is expected to be in the 10A and more range, thus the reason for choosing a resistor value of 50 milli-ohms. The voltage value will be 50 milli-volts per amp. There are considerations when measuring large inrush currents. A low side measurement technique was used so both inrush current and battery voltage can be measured simultaneously with a common ground and displayed on a 2-channel oscilloscope. To minimize wire resistance and resulting voltage drop errors caused by the large inrush current, large diameter wires and component leads were used as shown in bold on the schematic.

TP2 and TP3 are used to connect the voltage across Rs to the channel of an oscilloscope. Use a 10X probe. TP3 is the common ground. The battery voltage is measured at TP4 with a 10X probe.

TP1 is the connection point for the output of a function generator. The function generator waveform should be set to pulse, with the amplitude high voltage set to 3.6V and the low voltage set to 0 V.

Controlling Inrush Current with Slew Rate Control using Dialog Load Switches

6.2 Theory of Operation (Circuit B)

Circuit B was used to measure inrush current into C1 with slew rate control using the Dialog SLG59M1717V evaluation board. The value of C1 was chosen to be 15 μ F. R_s is utilized to convert the inrush current to a voltage that can be measured with an oscilloscope. The inrush current is expected to be in the 10 mA range, thus the reason for choosing a resistor value of 10 ohms. The voltage value will be 10 milli-volts / mA.

TP2 and TP3 are used to connect the voltage across R_s to the channel of an oscilloscope. Use a 10X probe. TP3 is the common ground. Set the probe BW to 20 MHz. The battery voltage is measured with a 10X probe by placing the probe directly on TP4.

TP1 is the connection point for the output of a function generator. The function generator mode should be pulse, with the amplitude set to 2 V.

7 Results

Dialog high side power switch solutions utilize a programmable controlled slew rate when the switch is enabled. The use of a controlled slew rate on a high side switch will substantially reduce the inrush currents that are a result of energizing sections of circuitry that utilize bulk and decoupling capacitors. Controlling these inrush currents by design will eliminate the negative effects of these large unwanted transient currents.

8 Conclusion

Inrush currents can potentially degrade the quality and performance of electronic products. Without inrush current control by design, unwanted voltage dips, transients and perturbations can occur on the output of battery systems and linear and switching power supplies. The use of Dialog IPS load switches with slew rate control will improve the quality, performance and reliability of electronic products

**Controlling Inrush Current with Slew Rate Control
using Dialog Load Switches**

Revision History

Revision	Date	Description
1.0	05-Mar-2018	Initial version

Controlling Inrush Current with Slew Rate Control using Dialog Load Switches

Status Definitions

Status	Definition
DRAFT	The content of this document is under review and subject to formal approval, which may result in modifications or additions.
APPROVED or unmarked	The content of this document has been approved for publication.

Disclaimer

Information in this document is believed to be accurate and reliable. However, Dialog Semiconductor does not give any representations or warranties, expressed or implied, as to the accuracy or completeness of such information. Dialog Semiconductor furthermore takes no responsibility whatsoever for the content in this document if provided by any information source outside of Dialog Semiconductor.

Dialog Semiconductor reserves the right to change without notice the information published in this document, including without limitation the specification and the design of the related semiconductor products, software and applications.

Applications, software, and semiconductor products described in this document are for illustrative purposes only. Dialog Semiconductor makes no representation or warranty that such applications, software and semiconductor products will be suitable for the specified use without further testing or modification. Unless otherwise agreed in writing, such testing or modification is the sole responsibility of the customer and Dialog Semiconductor excludes all liability in this respect.

Customer notes that nothing in this document may be construed as a license for customer to use the Dialog Semiconductor products, software and applications referred to in this document. Such license must be separately sought by customer with Dialog Semiconductor.

All use of Dialog Semiconductor products, software and applications referred to in this document are subject to Dialog Semiconductor's [Standard Terms and Conditions of Sale](#), available on the company website (www.dialog-semiconductor.com) unless otherwise stated.

Dialog and the Dialog logo are trademarks of Dialog Semiconductor plc or its subsidiaries. All other product or service names are the property of their respective owners.

© 2018 Dialog Semiconductor. All rights reserved.

Contacting Dialog Semiconductor

United Kingdom (Headquarters)

Dialog Semiconductor (UK) LTD
Phone: +44 1793 757700

Germany

Dialog Semiconductor GmbH
Phone: +49 7021 805-0

The Netherlands

Dialog Semiconductor B.V.
Phone: +31 73 640 8822

Email:

enquiry@diasemi.com

North America

Dialog Semiconductor Inc.
Phone: +1 408 845 8500

Japan

Dialog Semiconductor K. K.
Phone: +81 3 5769 5100

Taiwan

Dialog Semiconductor Taiwan
Phone: +886 281 786 222

Web site:

www.dialog-semiconductor.com

Hong Kong

Dialog Semiconductor Hong Kong
Phone: +852 2607 4271

Korea

Dialog Semiconductor Korea
Phone: +82 2 3469 8200

China (Shenzhen)

Dialog Semiconductor China
Phone: +86 755 2981 3669

China (Shanghai)

Dialog Semiconductor China
Phone: +86 21 5424 9058

IMPORTANT NOTICE AND DISCLAIMER

RENESAS ELECTRONICS CORPORATION AND ITS SUBSIDIARIES (“RENESAS”) PROVIDES TECHNICAL SPECIFICATIONS AND RELIABILITY DATA (INCLUDING DATASHEETS), DESIGN RESOURCES (INCLUDING REFERENCE DESIGNS), APPLICATION OR OTHER DESIGN ADVICE, WEB TOOLS, SAFETY INFORMATION, AND OTHER RESOURCES “AS IS” AND WITH ALL FAULTS, AND DISCLAIMS ALL WARRANTIES, EXPRESS OR IMPLIED, INCLUDING, WITHOUT LIMITATION, ANY IMPLIED WARRANTIES OF MERCHANTABILITY, FITNESS FOR A PARTICULAR PURPOSE, OR NON-INFRINGEMENT OF THIRD PARTY INTELLECTUAL PROPERTY RIGHTS.

These resources are intended for developers skilled in the art designing with Renesas products. You are solely responsible for (1) selecting the appropriate products for your application, (2) designing, validating, and testing your application, and (3) ensuring your application meets applicable standards, and any other safety, security, or other requirements. These resources are subject to change without notice. Renesas grants you permission to use these resources only for development of an application that uses Renesas products. Other reproduction or use of these resources is strictly prohibited. No license is granted to any other Renesas intellectual property or to any third party intellectual property. Renesas disclaims responsibility for, and you will fully indemnify Renesas and its representatives against, any claims, damages, costs, losses, or liabilities arising out of your use of these resources. Renesas' products are provided only subject to Renesas' Terms and Conditions of Sale or other applicable terms agreed to in writing. No use of any Renesas resources expands or otherwise alters any applicable warranties or warranty disclaimers for these products.

(Rev.1.0 Mar 2020)

Corporate Headquarters

TOYOSU FORESIA, 3-2-24 Toyosu,
Koto-ku, Tokyo 135-0061, Japan
www.renesas.com

Contact Information

For further information on a product, technology, the most up-to-date version of a document, or your nearest sales office, please visit:
www.renesas.com/contact/

Trademarks

Renesas and the Renesas logo are trademarks of Renesas Electronics Corporation. All trademarks and registered trademarks are the property of their respective owners.