

# Application Note

## Smart LED Dimmer Controlled via Bluetooth

### AN-CM-225

#### Abstract

*This application note describes how to build a smart digital dimmer using [GreenPAK™ SLG46620V](#). A dimmer is a common light switch that is used in houses, hotels and many other buildings. Older versions of dimmer switches were manual, and would typically incorporate a rotary switch (potentiometer) or buttons to control the light level.*

*This application note comes complete with design files which can be found in the References section.*

---

---

---



---

**Smart LED Dimmer Controlled via Bluetooth**

## Contents

<b>Abstract</b> .....	<b>1</b>
<b>Contents</b> .....	<b>2</b>
<b>Figures</b> .....	<b>2</b>
<b>Tables</b> .....	<b>2</b>
<b>1 Terms and Definitions</b> .....	<b>3</b>
<b>2 References</b> .....	<b>3</b>
<b>3 Introduction</b> .....	<b>4</b>
<b>4 GreenPAK Design</b> .....	<b>5</b>
4.1 UART receiver.....	5
4.2 Control unit.....	6
4.3 CLK Generators and multiplexer.....	7
4.4 PWM.....	7
<b>5 Android app</b> .....	<b>8</b>
<b>6 Conclusion</b> .....	<b>10</b>
<b>Revision History</b> .....	<b>11</b>

## Figures

Figure 1: Dimmer Block Diagram .....	4
Figure 2: UART Receiver .....	6
Figure 3: Control Unit Design .....	7
Figure 4: Clock Generator Design .....	7
Figure 5: PWM Block.....	7
Figure 6: Programming blocks of buttons.....	8
Figure 7: Programming blocks of buttons.....	9
Figure 8: Circuit Schematic .....	9
Figure 9: Prototype Interface .....	10

## Tables

Table 1: Command-Bit Representation .....	8
---	---

---

---

## Smart LED Dimmer Controlled via Bluetooth

### 1 Terms and Definitions

IC	Integrated Circuit
UART	Universal asynchronous receiver-transmitter
LED	Light-emitting diode
SPI	Serial Peripheral Interface
PWM	Pulse-width modulation
FSM	Finite-state machine
LUT	Look-up table
DFF	D-type flip-flop

### 2 References

For related documents and software, please visit:

<https://www.dialog-semiconductor.com/products/greenpak>.

Download our free [GreenPAK Designer](#) software [1] to open the .gp files [2] and view the proposed circuit design. Use the [GreenPAK development tools](#) [3] to freeze the design into your own customized IC in a matter of minutes. Renesas Electronics provides a complete library of application notes [4] featuring design examples as well as explanations of features and blocks within the IC.

- [1] [GreenPAK Designer Software](#), Software Download and User Guide, Renesas Electronics
- [2] [AN-CM-225 Smart LED Dimmer Controlled via Bluetooth.gp](#), [GreenPAK Design File](#), Renesas Electronics
- [3] [GreenPAK Development Tools](#), [GreenPAK Development Tools Webpage](#), Renesas Electronics
- [4] [GreenPAK Application Notes](#), [GreenPAK Application Notes Webpage](#), Renesas Electronics
- [5] [SLG46620V](#), Datasheet, Renesas Electronics

## Smart LED Dimmer Controlled via Bluetooth

### 3 Introduction

This application note describes how to build a smart digital dimmer. A dimmer is a common light switch that is used in houses, hotels and many other buildings. Older versions of dimmer switches were manual, and would typically incorporate a rotary switch (potentiometer) or buttons to control the light level. This application note describes how to build a digital dimmer that has two ways of controlling light intensity; a smart phone and physical buttons. The two modes can work seamlessly together so that the user can increase or decrease luminosity from both a button and smart phone. The project is implemented using a SLG46620V IC, HC-06 Bluetooth module, push buttons and LEDs.

We are going to use the SLG46620V IC as it helps minimize discrete project components. GreenPAK IC's are small and have multiuse components, which allows a designer to decrease components and to add new features. Additionally, the project cost is subsequently reduced.

The SLG46620V also contains a SPI connection interface, PWM blocks, FSM and a lot of useful additional blocks in one tiny chip. These components allow a user to build a practical smart dimmer which can be controlled via a Bluetooth device or wall buttons, support extended-time dimming, and the addition of selectable features without using a microcontroller or expensive components.

#### Project features:

1. Two methods of control; mobile app and real buttons.
2. Smooth on-off transition for the light. This is healthier for a consumer's eyes. It also gives a more luxurious feeling, which is appealing to hotels and other service industries.
3. Sleep mode feature. This will be an added value for this application. When the user activates this mode, light brightness decreases gradually in 10 minutes. This helps people who suffer from insomnia. It is also useful for kid's bedrooms and retail shops (closing time).

#### Project Interface

The project interface has four push buttons, which are used as GreenPAK inputs:

**ON/OFF:** turn the light ON/OFF (soft-start/stop).

**UP:** increase light level.

**Down:** decrease light level.

**Sleep Mode:** by activating sleep mode, light brightness decreases gradually over a period of 10 minutes. This gives the user time before sleeping and guarantees that the light will not stay ON all night.

The system will output a PWM signal, which will be passed to an external LED and sleep mode LED indicator.

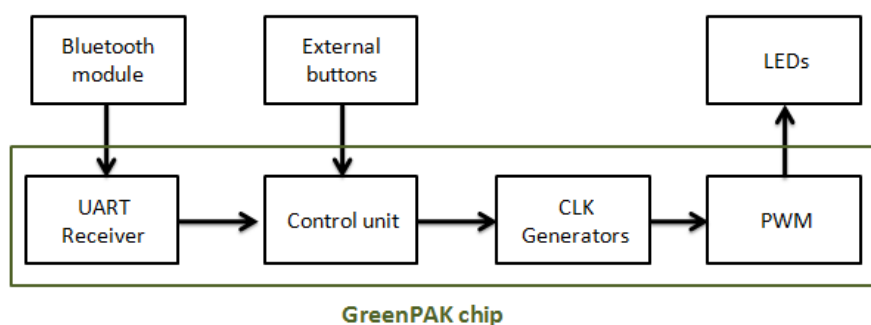


Figure 1: Dimmer Block Diagram

The GreenPAK design is comprised of 4 main blocks. The first is a **UART receiver**, which receives data from the Bluetooth module, extracts orders, and sends them to a **control unit**. The second block is a control unit, which receives orders coming from the UART receiver or from the external

## Smart LED Dimmer Controlled via Bluetooth

buttons. The control unit decides the required action (Turn ON/OFF, Increase, decrease, enable sleep mode). This unit is implemented using LUTs.

The third block supplies the **CLK generators**. In this project, a FSM counter is used to control the PWM. The FSM's value will change (up, down) according to the orders given by 3 frequencies (high, medium, and low). In this section the three frequencies will be generated and the required CLK passes to FSM according to the required order; In turning on/off operation, high frequency passes to FSM to soft start/stop. During dimming, the medium frequency passes. The low frequency passes in sleep mode to reduce the FSM value more slowly. Then, light brightness decreases slowly too. The fourth block is the **PWM** unit, which generates pulses to external LEDs.

## 4 GreenPAK Design

The best way to build a dimmer using GreenPAK is by using the 8-bit FSM and a PWM. In the SLG46620, FSM1 contains 8 bits and can be used with PWM1 and PWM2. The Bluetooth module must be connected, which means the SPI parallel output must be used. The SPI parallel output bits 0 through 7 connections are muxed with DCMP1, DMCP2, and LF OSC CLK, OUT1, OUT0 OSC outputs. PWM0 obtains its output from FSM0 (16 bits). FSM0 does not stop at 255; it increases up to 16383. To limit the counter value at 8 bits another FSM is added; FSM1 is used as a pointer to know when the counter reaches 0 or 255. FSM0 was used to generate the PWM pulse. As the two FSM's values must be changed at the same time to have the same value, the design becomes a bit complex where in both FSMs have a predefined, limited, selectable CLK. CNT1 and CNT3 are used as mediators to pass the CLK to both FSMs.

The design consists of the following sections.

### 4.1 UART receiver

First, we need to set up the HC06 Bluetooth module. The HC06 uses the UART protocol for communication. UART stands for Universal Asynchronous Receiver / Transmitter. UART can convert data back and forth between parallel and serial formats. It includes a serial to parallel receiver and a parallel to serial converter which are both clocked separately. The data received in the HC06 will be transmitted to our GreenPAK device. The idle state for Pin 10 is HIGH. Every character sent begins with a logic LOW start bit, followed by a configurable number of data bits, and one or more logic HIGH stop bits.

The HC06 sends 1 START bit, 8 data bits, and one STOP bit. Its default baud rate is 9600. We will send the data byte from the HC06 to the GreenPAK SLG46620V's SPI block.

Since the Silego SPI block does not have START or STOP bit control, those bits are instead used to enable and disable the SPI clock signal (SCLK). When Pin 10 goes LOW, the IC has received a START bit, so we use the PDLY falling edge detector to identify the start of communication. That falling edge detector clocks DFF0, which enables the SCLK signal to clock the SPI block.

Our baud rate is 9600 bits per second, so our SCLK period needs to be  $1/9600 = 104 \mu\text{s}$ . Therefore, we set the OSC frequency to 2 MHz and used CNT0 as a frequency divider.

$$2 \text{ MHz} \cdot 1 = 0.5 \mu\text{s}$$

$$(104 \mu\text{s} / 0.5 \mu\text{s}) - 1 = 207$$

Therefore, we want the CNT0 counter value to be 207. To ensure that data is not missed, a half clock cycle delay on the SPI clock is added so that the SPI block is being clocked at the proper time. This is accomplished by using CNT6, 2-bit LUT1, and the OSC block's External Clock. The output of CNT6 does not go high until  $52 \mu\text{s}$  after DFF0 is clocked, which is exactly half of our SCLK period of  $104 \mu\text{s}$ . When it goes high, the 2-bit LUT1 AND gate allows the 2 MHz OSC signal to pass into the EXT. CLK0 input, whose output is connected to CNT0.

## Smart LED Dimmer Controlled via Bluetooth

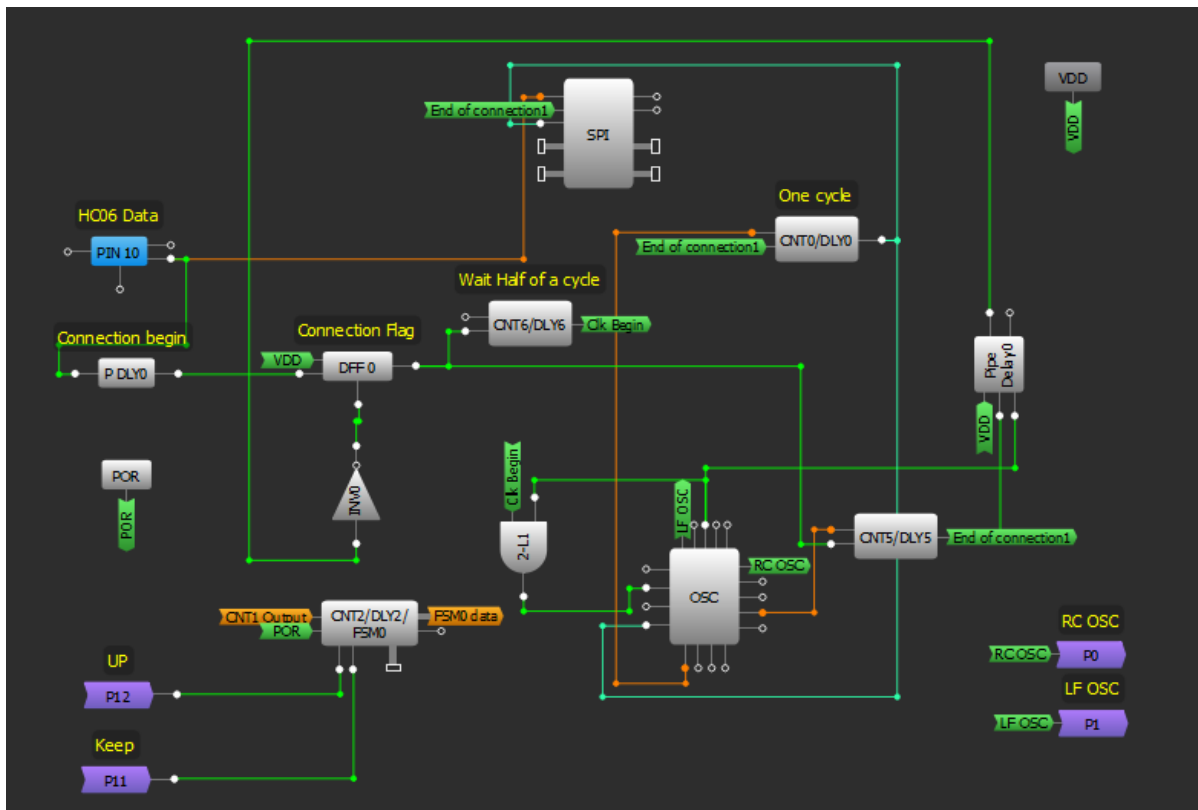


Figure 2: UART Receiver

### 4.2 Control unit

In this section, commands will be executed according to the received byte from the UART receiver, or according to the signals from the external buttons. Pins 12, 13, 14, 15 are initialized as inputs and are connected to external buttons.

Each pin is internally connected to an OR gate input, while the second input of the gate is connected with the corresponding signal that coming from the smart phone via Bluetooth which is going to appear on SPI Parallel output.

DFF6 is used to activate sleep mode where its output changes to high with the rising edge coming from 2-bit LUT4, while DFF10 is used to maintain the lighting status, and its output changes from low to high and vice versa with every rising edge coming from 3-bit LUT10 output.

FSM1 is an 8-bit counter; it gives a high pulse on its output when its value reaches to 0 or 255. Consequently, it's used to prevent FSM0 (16-bit) from exceeding the value 255, as its output resets DFFs and it changes DFF10 status from **on** to **off** and vice versa if lighting is controlled by the buttons **+**, **-** and the maximum/minimum level has been reached.

The signals connected to FSM1 inputs **keep**, **up** will reach FSM0 through P11 and P12 to synchronize and keep the same value on both counters.

## Smart LED Dimmer Controlled via Bluetooth

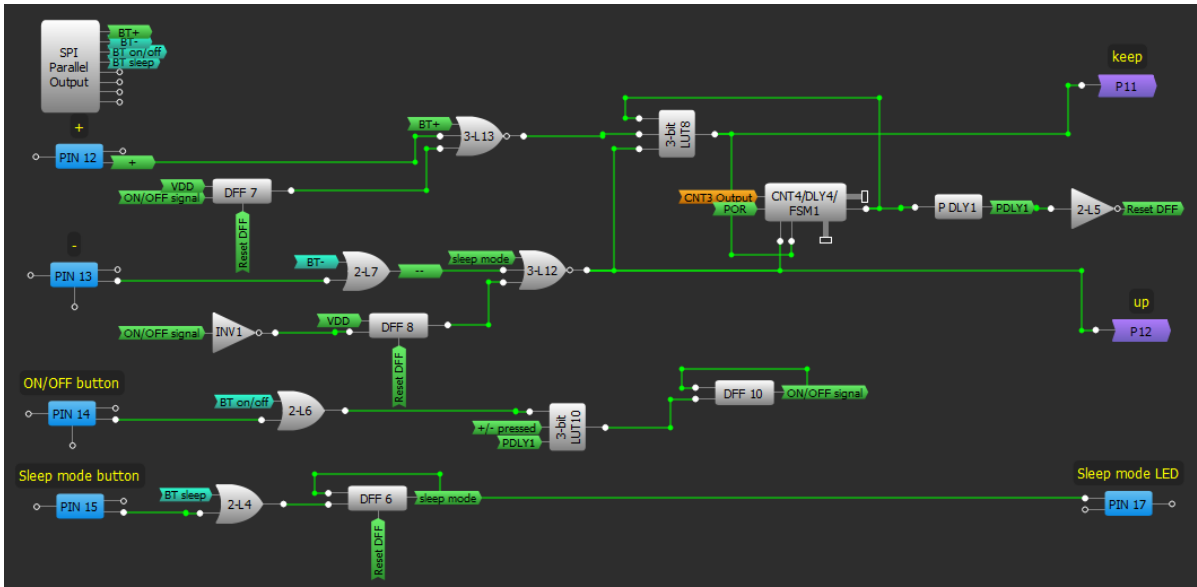


Figure 3: Control Unit Design

### 4.3 CLK Generators and multiplexer

In this section, three frequencies will be generated, but only one will clock the FSMs at any one time. The first frequency is RC OSC, which is fetched from the matrix 0 through P0. The second frequency is LF OSC which is also fetched from the matrix 0 through P1; the third frequency is the CNT7 output.

3-bit LUT9 and 3-bit LUT11 allow one frequency to pass, according to the 3-bit LUT14 output. After that, the chosen clock transmits to FSM0 and FSM1 through CNT1 and CNT3.

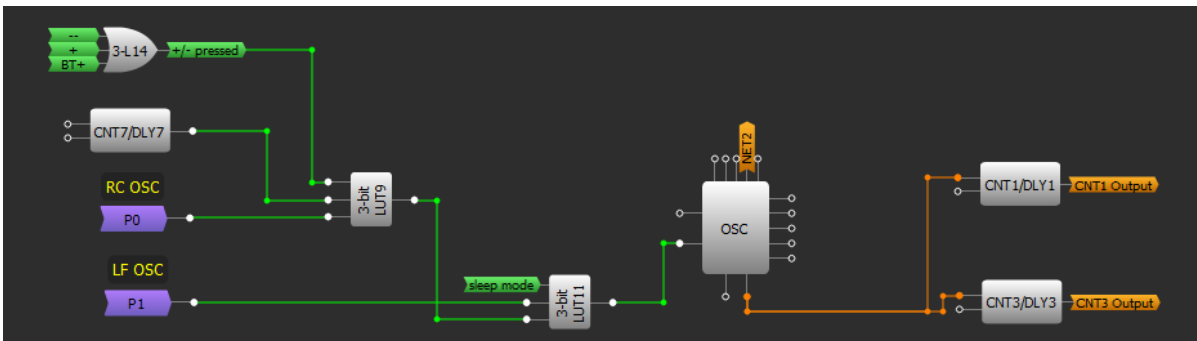


Figure 4: Clock Generator Design

### 4.4 PWM

Finally, FSM0 value transforms to PWM signal to appear through pin 20 which is initialized as an output and it is connected to the external LEDs.

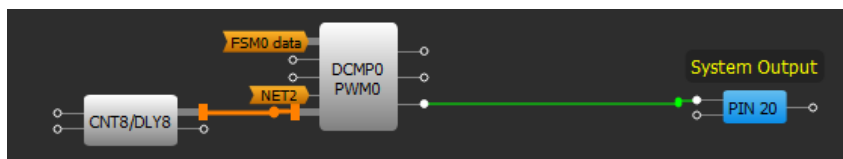


Figure 5: PWM Block

## Smart LED Dimmer Controlled via Bluetooth

### 5 Android app

The Android app has a virtual control interface similar to the real interface. It has five buttons; ON/OFF, UP, DOWN, Sleep mode, and Connect. This Android Application will be able to convert button presses into a command, and will send the commands to the Bluetooth module to be carried out.

This app was made with MIT App Inventor, which doesn't require any programming experience. The App Inventor lets the developer create an application for Android OS devices using a web browser by connecting programming blocks. You can import our App into the MIT App Inventor by clicking on Projects -> Import project (.aia) from my computer, and selecting the .aia file included with this App Note.

To create the Android Application a new project must be started. Five buttons are required: one is a list picker for Bluetooth devices, and the others are the control buttons. We need to add a Bluetooth client as well. [Figure 6Error! Reference source not found.](#) is a screen capture of our Android Application's user interface.

After we add the buttons, we are going to assign software function for each button. We are going to use 4 bits to represent the status of the buttons. One bit for each button, therefore, when you press the button, a specific number will be sent via Bluetooth to the physical circuit.

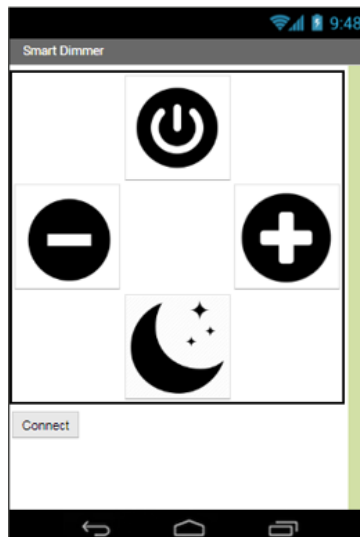


Figure 6: Programming blocks of buttons

These numbers are shown in [Table 1](#):

Table 1: Command-Bit Representation

Action	8-Bit Represent	In Decimal
+	10000000	1
-	01000000	2
Turn ON/OFF	00100000	4
Sleep mode	00010000	8
Button released	00000000	0



Smart LED Dimmer Controlled via Bluetooth

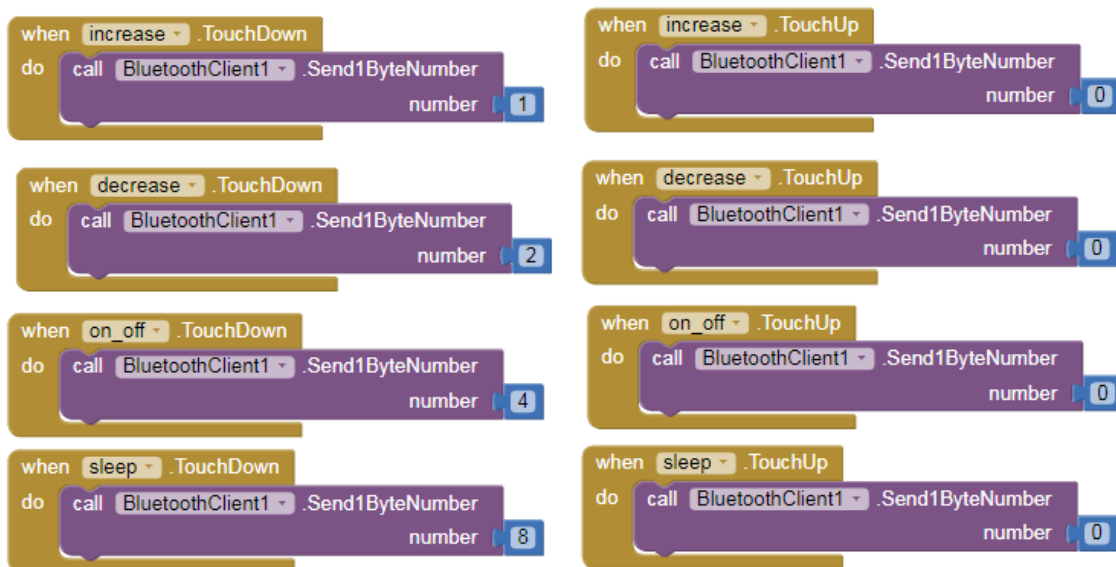


Figure 7: Programming blocks of buttons

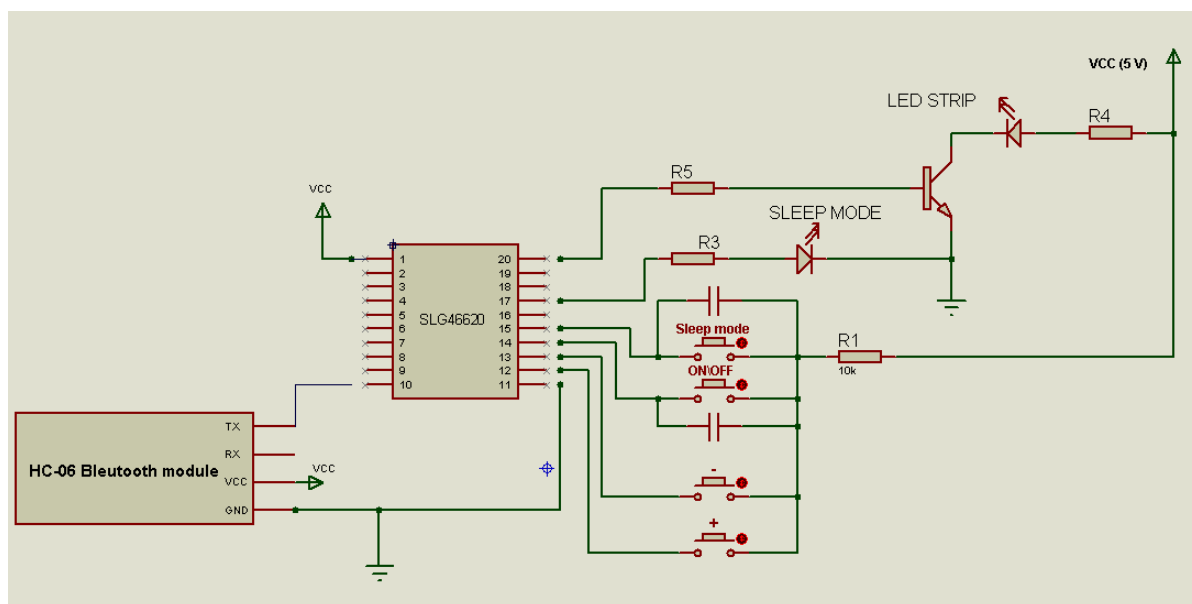


Figure 8: Circuit Schematic

## Smart LED Dimmer Controlled via Bluetooth

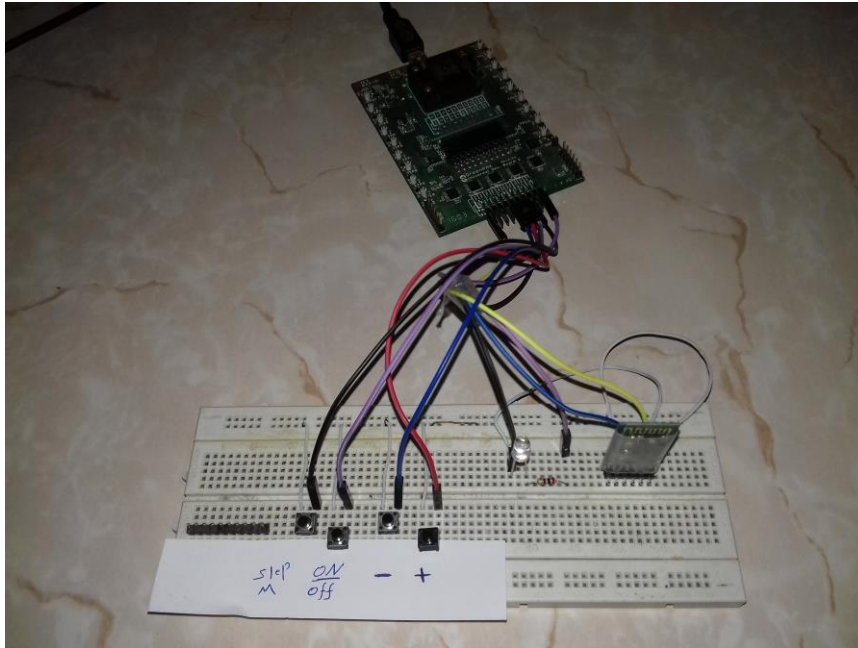


Figure 9: Prototype Interface

## 6 Conclusion

This app note describes a smart dimmer that can be controlled in two ways; an Android app and real buttons. Four separate blocks are outlined within the GreenPAK SLG46620V which control the process flow for increasing or decreasing the PWM of a light. Additionally, a Sleep-mode feature is outlined as an example of extra modulation available for the application. The example shown is low voltage, but can be modified for higher voltage implementations.

---

---

**Smart LED Dimmer Controlled via Bluetooth****Revision History**

Revision	Date	Description
1.0	28-Feb-2018	Initial version.

## IMPORTANT NOTICE AND DISCLAIMER

RENESAS ELECTRONICS CORPORATION AND ITS SUBSIDIARIES (“RENESAS”) PROVIDES TECHNICAL SPECIFICATIONS AND RELIABILITY DATA (INCLUDING DATASHEETS), DESIGN RESOURCES (INCLUDING REFERENCE DESIGNS), APPLICATION OR OTHER DESIGN ADVICE, WEB TOOLS, SAFETY INFORMATION, AND OTHER RESOURCES “AS IS” AND WITH ALL FAULTS, AND DISCLAIMS ALL WARRANTIES, EXPRESS OR IMPLIED, INCLUDING, WITHOUT LIMITATION, ANY IMPLIED WARRANTIES OF MERCHANTABILITY, FITNESS FOR A PARTICULAR PURPOSE, OR NON-INFRINGEMENT OF THIRD PARTY INTELLECTUAL PROPERTY RIGHTS.

These resources are intended for developers skilled in the art designing with Renesas products. You are solely responsible for (1) selecting the appropriate products for your application, (2) designing, validating, and testing your application, and (3) ensuring your application meets applicable standards, and any other safety, security, or other requirements. These resources are subject to change without notice. Renesas grants you permission to use these resources only for development of an application that uses Renesas products. Other reproduction or use of these resources is strictly prohibited. No license is granted to any other Renesas intellectual property or to any third party intellectual property. Renesas disclaims responsibility for, and you will fully indemnify Renesas and its representatives against, any claims, damages, costs, losses, or liabilities arising out of your use of these resources. Renesas' products are provided only subject to Renesas' Terms and Conditions of Sale or other applicable terms agreed to in writing. No use of any Renesas resources expands or otherwise alters any applicable warranties or warranty disclaimers for these products.

(Rev.1.0 Mar 2020)

### Corporate Headquarters

TOYOSU FORESIA, 3-2-24 Toyosu,  
Koto-ku, Tokyo 135-0061, Japan  
[www.renesas.com](http://www.renesas.com)

### Contact Information

For further information on a product, technology, the most up-to-date version of a document, or your nearest sales office, please visit:  
[www.renesas.com/contact/](http://www.renesas.com/contact/)

### Trademarks

Renesas and the Renesas logo are trademarks of Renesas Electronics Corporation. All trademarks and registered trademarks are the property of their respective owners.