

3-IN-1 SMART SPEAKER SOLUTION

RENESAS ELECTRONICS CORPORATION

Q1, 2019

BIG IDEAS
FOR EVERY SPACE

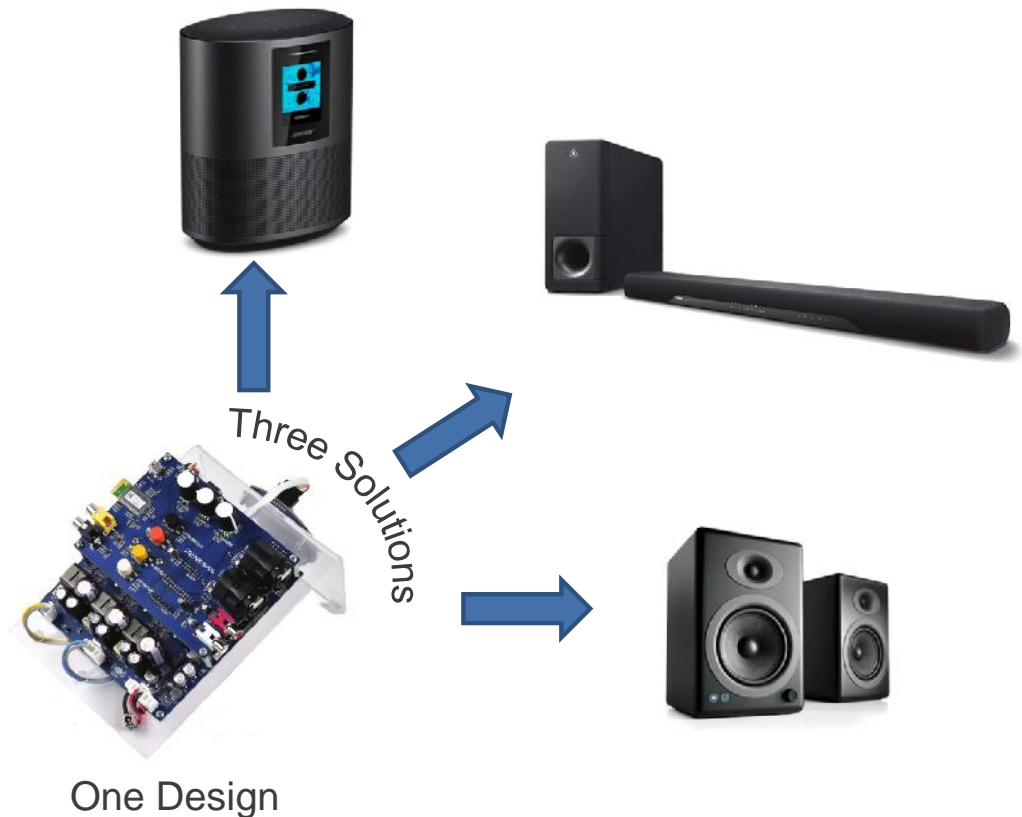
3-IN-1 SMART SPEAKER SOLUTION

What is it:

- Reference design that can be configured for smart speaker, powered speaker, and sound bar applications
- Includes all needed files for immediate implementation
- No cost – Download it from the Renesas website
- Features Renesas:
 - D2 Audio DSP
 - RX65N MCU

Value:

- Turnkey solution that can be implemented as provided
- Or, can remove design blocks if features are not required
- Or, can customize the solution with minimal engineering effort.



FEATURES AND SPECIFICATIONS

Audio Performance

- Amp Freq Response: 20Hz to 20kHz, $\pm 0.5\text{dB}$
- THD+N: $< 0.3\%$
- SNR: $> 110\text{dB}$ (ref Full Power)

Audio Inputs Available

- RCA Phono Jack
- XLR/TRS Combicon
- Coaxial S/PDIF
- USB Audio Streaming

Wireless Connectivity Available

- WiFi w/"Alexa" Voice Control (Linkplay)
- Bluetooth 4.2

App Control Available

- Portable app code for iPhone or Android OS

System Microcontroller

- Renesas RX65N

Audio DSP Engine

- Renesas D2-3 or D2-6 family Audio Processor
- Configurable sound stream using D2 Audio Customization GUI
- Optional Dolby Digital, Dolby Digital Plus, and/or DTS decoding

Audio Outputs Available

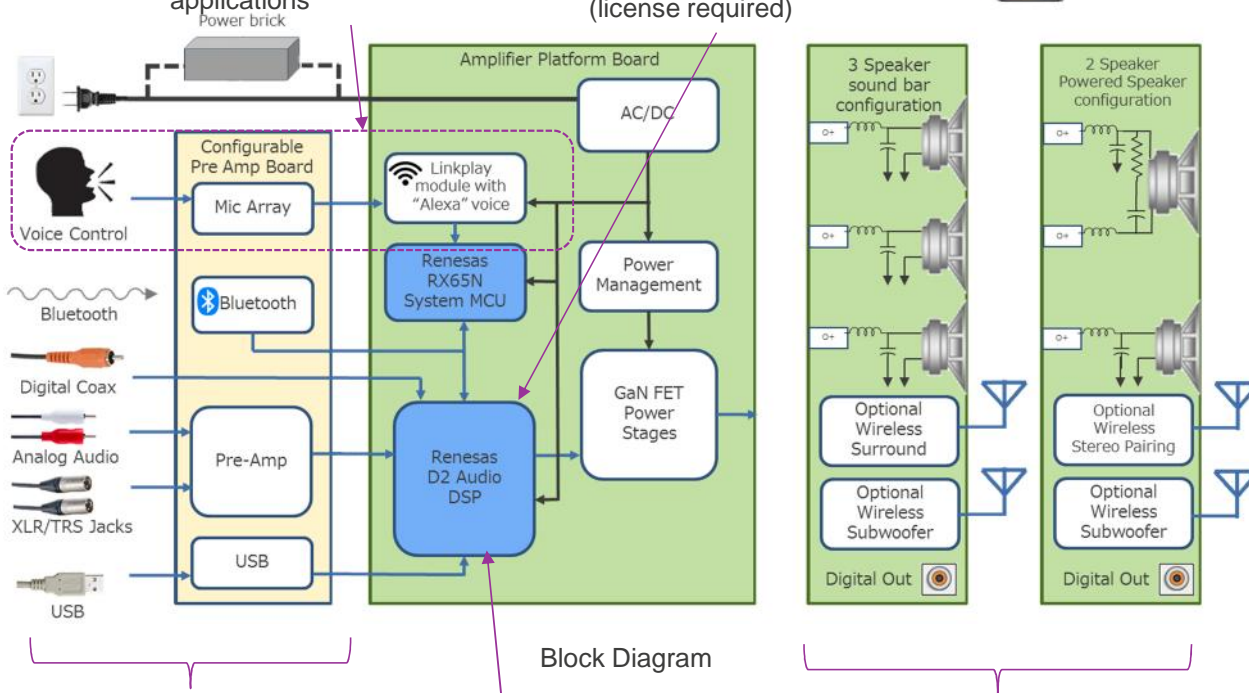
- GaN FET Power Output Stage
- Stereo Digital Output: Coaxial Digital
- Wireless Subwoofer link available
- Wireless Surround Sound or Stereo Speaker pairing available

Include Wifi module for smart speaker applications. Remove the module for traditional sound bar or powered speaker applications

Dolby or DTS decoding and enhancement available (license required)



App controllable – basic code available for free



Use or remove inputs as desired

Use provided sound streams or customize with free, no programming software

Use or remove output devices as desired. Basic 2.0 bookshelf speaker to full 5.1 surround sound system

AMPLIFIER BOARD – KEY FEATURES

Wireless output

- Remove from design if no wireless output features desired
- Wireless output for Sub woofer in either application
- Wireless output to drive surround speakers (Sound Bar) or a paired speaker (Powered Speaker)

Renesas D2-3 or D2-6 Audio SOC (D2-74053-LR used in demo board)

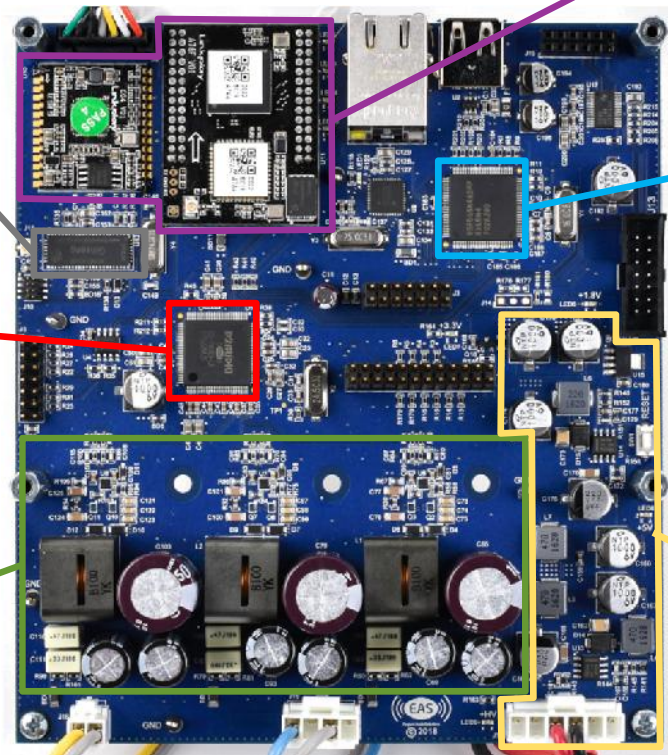
- Dolby and/or DTS decoding and enhancement available depending on actual product used
- Complete System on Chip audio processor and Class D amplifier with integrated DSP

Output Power Stage

- GaN FET Output Power stage drives up to 100W of power
- Can replace with integrated power stage such as D2-24044 for budget applications
- Configure to drive 2 speakers (woofer and tweeter) for Powered speaker applications
- Configure to drive 3 speakers (left, center, right) for Sound bar applications

Wifi module with “Alexa” voice:

- Use for smart speaker applications
- Remove from design for traditional speaker applications

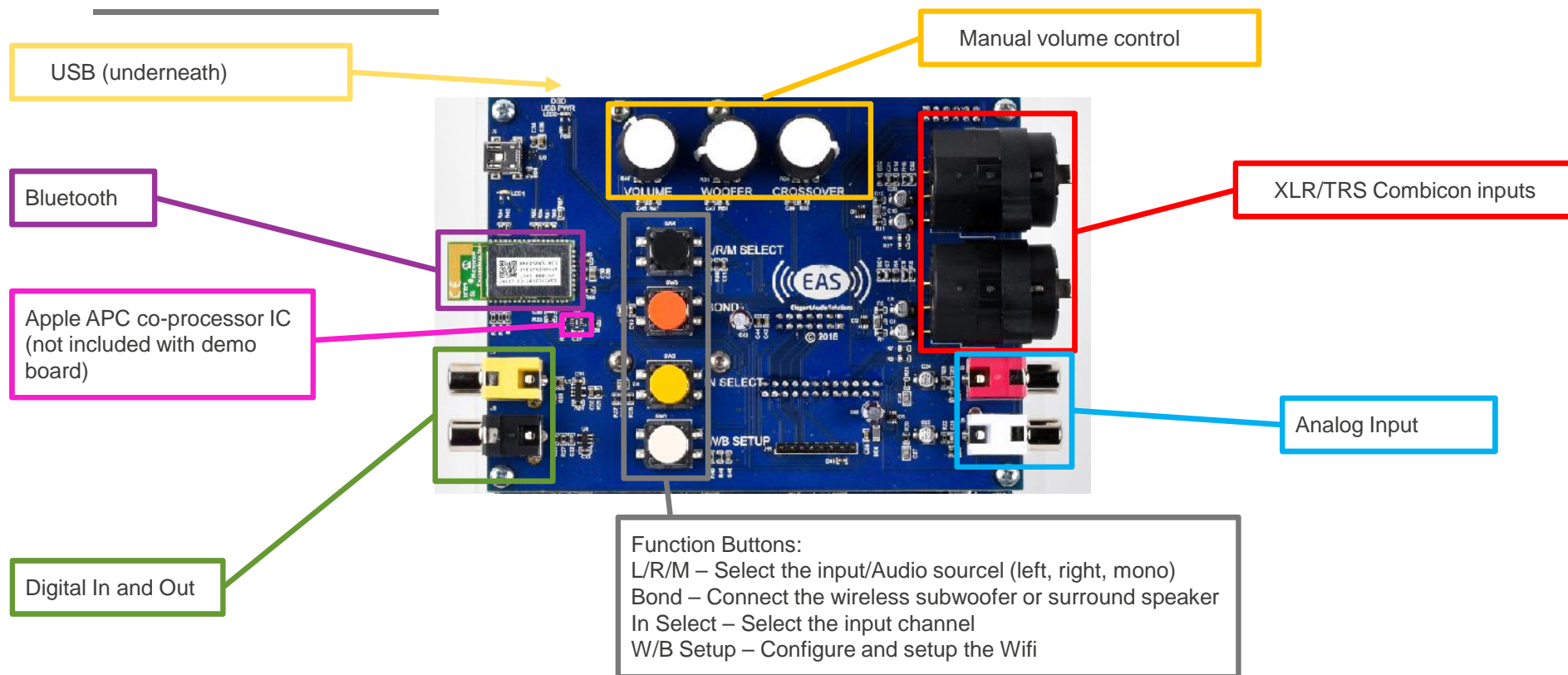


- ### Renesas RX65N MCU
- 32-bit core with DSP, 546 Coremarks at 120MHz
 - Free software stacks from Renesas FreeRTOS support

Power Management

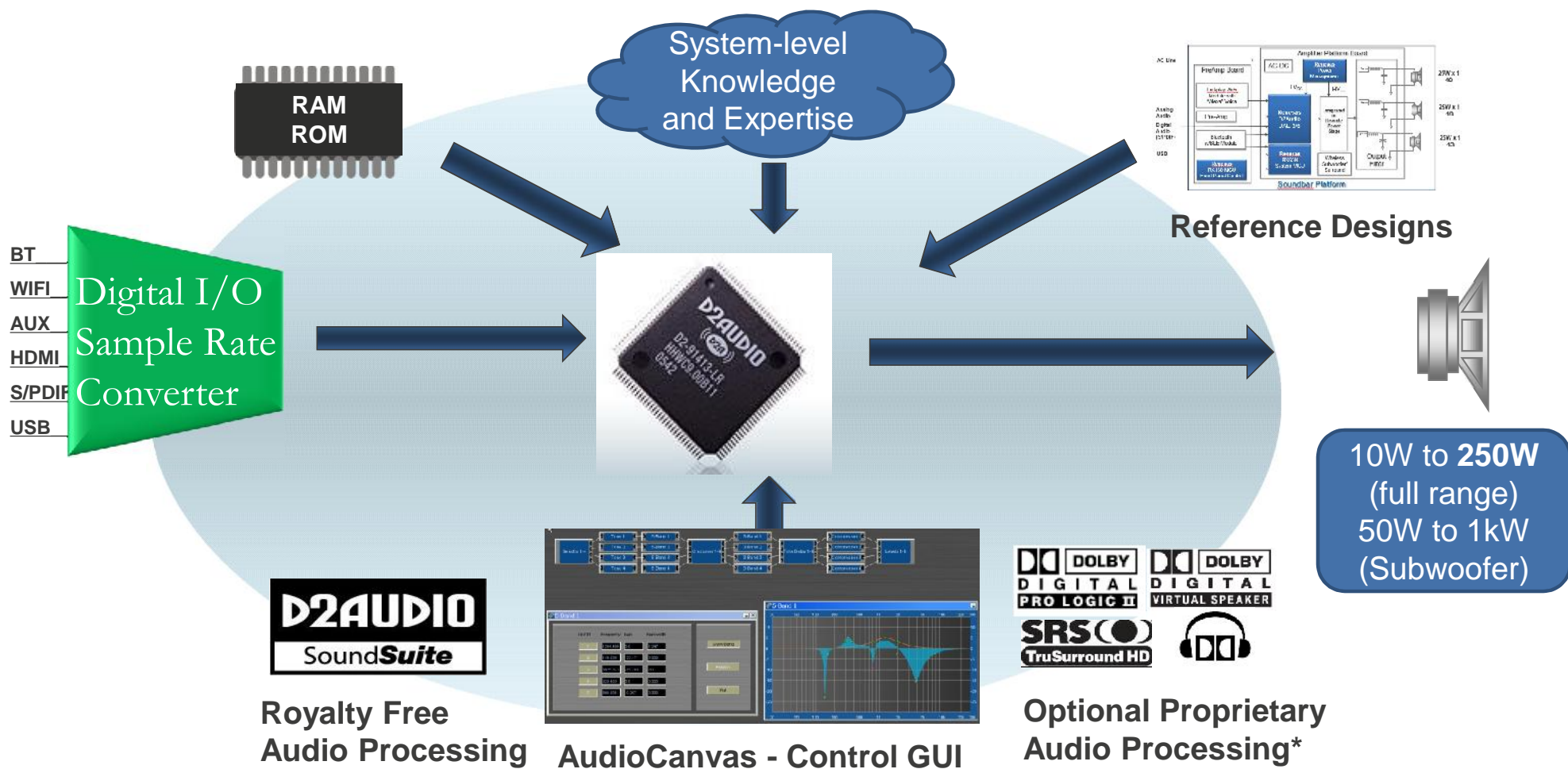
KS25-3WBAEVALZ Demo board available

INPUT BOARD – KEY FEATURES



KS25-3WBAEVALZ Demo board available

D2AUDIO SOC SOLUTION



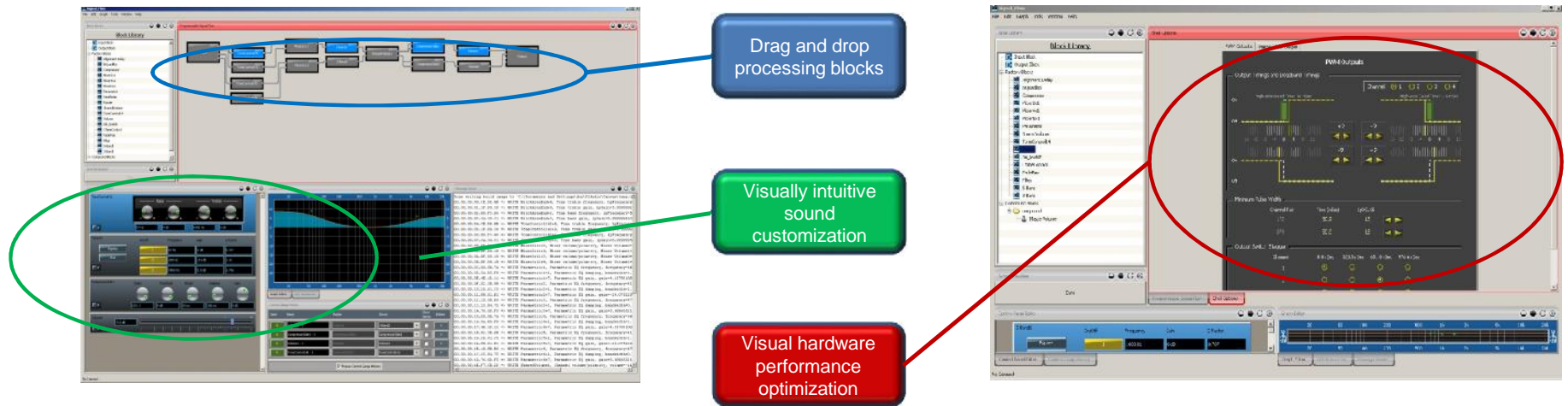
D2 AUDIO PRODUCT PORTFOLIO MATRIX

	Sound Processors			Power Stage
Family	D2-4 (4P)	D2-3 (3S)	D2-6	D2-IPS
ASRC Channels	2x	8 Channels		-
PWM Channels	5 Channels	12 Channels		4 Channels
Signal Flow	Fixed	Configurable		-
Optional Decoders	DTS® Wow	Dolby® Digital, Dolby® Pro Logic® II	Dolby® Digital, Dolby® Pro Logic® II, DTS® Digital Surround Dolby® Digital Plus*	-
Supported Audio Inputs	1x I ² S 1x S/PDIF 4x fault INT	4x I ² S 2x (1x) S/PDIF 8x fault INT ADC (non-HT only)	4x I ² S 2x S/PDIF 8x fault INT ADC	4
Supported Audio Outputs	5x (4x) PWM 3x PWM 1x S/PDIF	12x PWM 4x I ² S 1x S/PDIF	12x PWM 4x I ² S 1x S/PDIF	10W x 4 25W x 2 50W x 1
Value Add Features	D2 Audio PWM Engine, Graceful Fault Recovery, D2 Audio Sound Enhancement Algorithms, D2 Audio Customization GUI			

Customers must obtain licenses from Dolby and DTS to use the decoders

*coming soon

D2 AUDIO CUSTOMIZATION GUI DESIGN TOOL



Generate custom firmware for your solution using simple drag and drop audio blocks and visually intuitive control interfaces

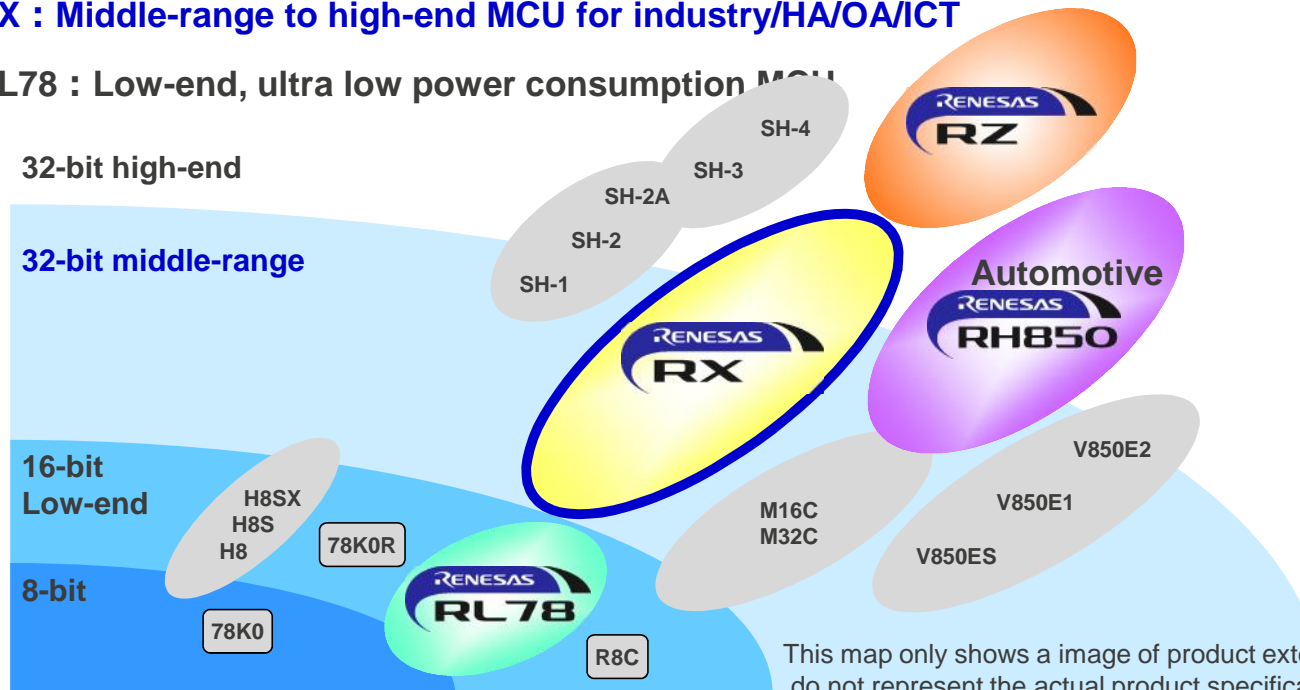
No direct coding required

Customization can be done in hours using the D2 Audio GUI instead of days or weeks using a traditional programming methods

Available to customers for no charge

RENESAS MCU/MPU LINEUP

- **RZ** : High-end Arm core MPU for HMI/connectivity/motor control
- **RX** : Middle-range to high-end MCU for industry/HA/OA/ICT
- **RL78** : Low-end, ultra low power consumption MCU

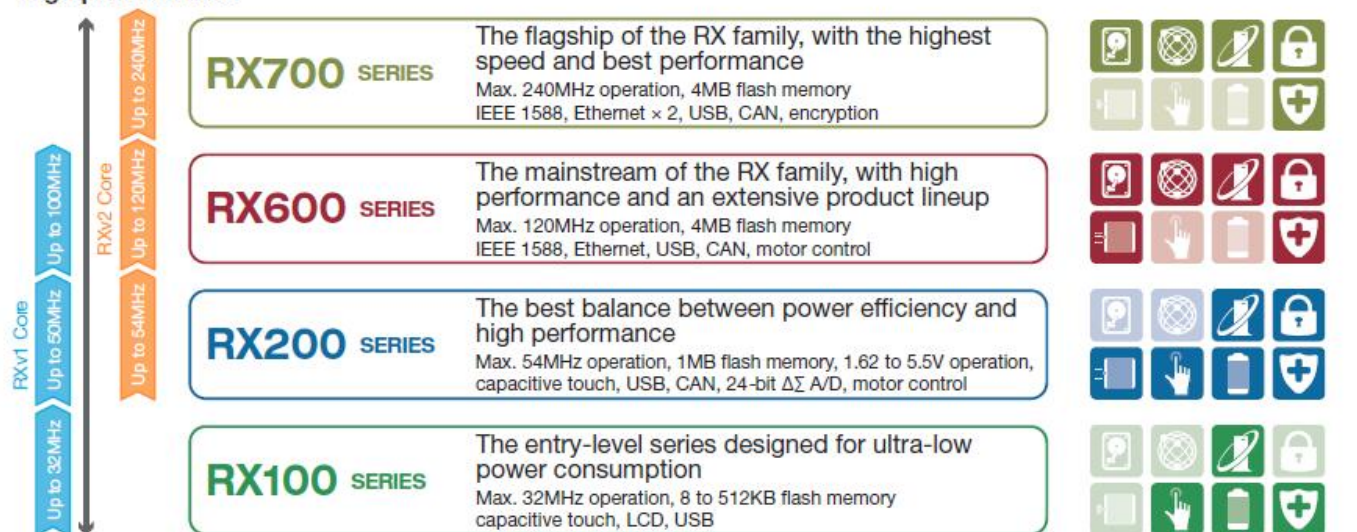


This map only shows a image of product extensibility, and horizontal and vertical lines do not represent the actual product specifications

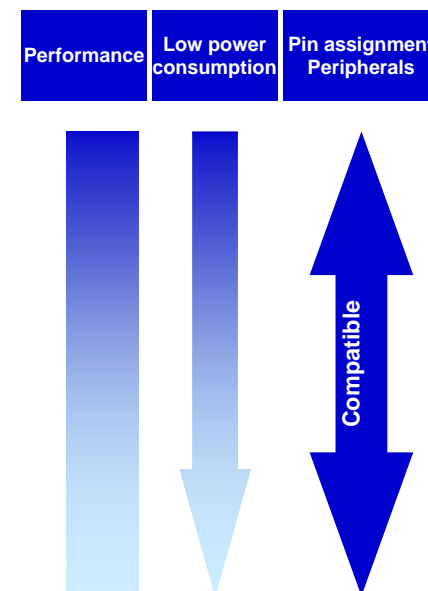
FEATURES OF RX FAMILY

Unified architecture covering the low end to the high end

High performance

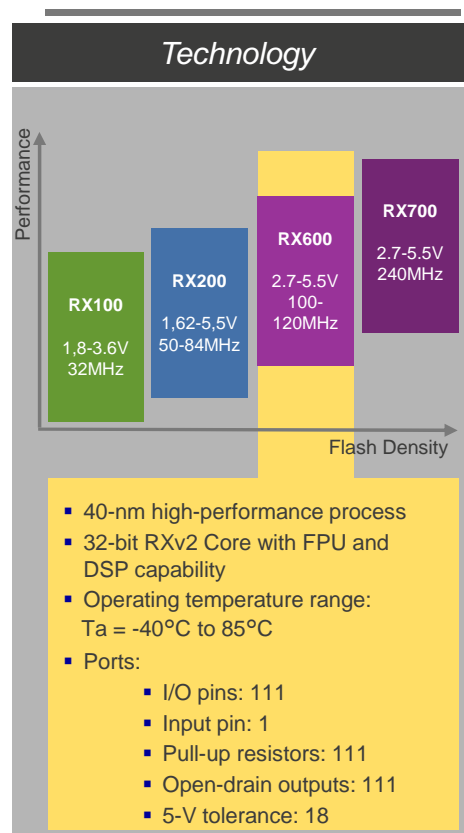


Low power



RX651/RX65N SPECIFICATION

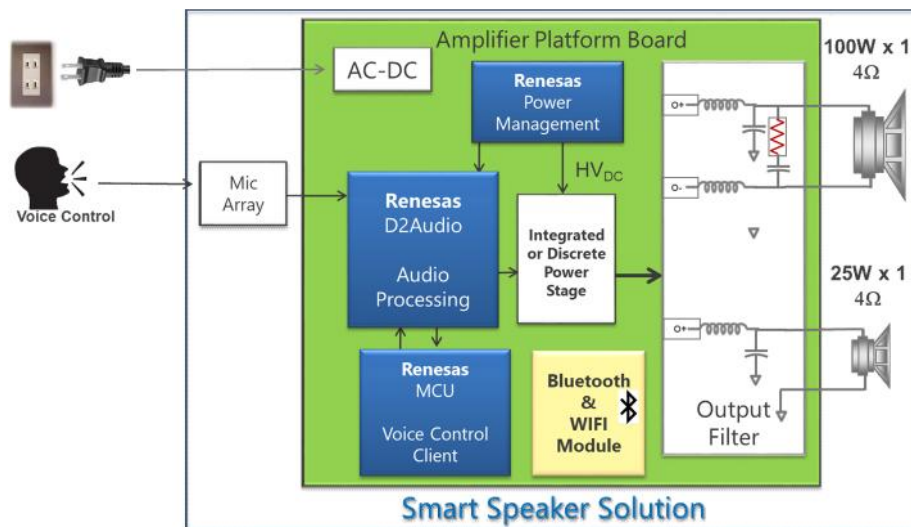
120MHZ RXV2 CPU, BROAD CONNECTIVITY, UP TO 1MB FLASH MEMORY



120MHz 32-Bit RXv2 Core		RX651	RX65N	1MB Flash
Memory <ul style="list-style-type: none"> Code Flash (512kB, 768kB, 1MB) SRAM (256kB) StandbyRAM (8kB) 		Analogue <ul style="list-style-type: none"> 12-bit A/D (21ch) ** 12-bit A/D (8ch) ** S&H (3ch) 12-bit DAC (2ch) ** Temperature Sensor 		HMI <ul style="list-style-type: none"> Parallel Data Capture Unit
Communication <ul style="list-style-type: none"> Ethernet MAC with DMA (on RX65N) USB2.0 FS x1 CAN x2 I2C x2 SCI x11, SCIF x2** SPI x3 QSPI x1 SDHI x1** / SDIO x1 ** External Bus with SDRAM 		System <ul style="list-style-type: none"> Data Transfer Controller ExDMA (2ch) DMA (8ch) Interrupt Controller Clock Generation High-speed on-chip oscillator Event Link Controller 		Timers <ul style="list-style-type: none"> MTU3a x1 (8ch) MTU3a 32bit (1ch)** TPUa x1 (6ch) PPG x2 TMR x4 CMTW(2ch)**;CMT(4ch) WDT, I-WDT RTC,Calendar,Vbat
		Safety <ul style="list-style-type: none"> Memory Protection Unit POR / LVD Trusted Memory Register Write Protection Unit Clock Frequency Accuracy Measurement CRC Calculator Data Operation Circuit 		Encryption <ul style="list-style-type: none"> AES (128/192/256) TRNG
				Package <ul style="list-style-type: none"> LQFP100 to 144 LGA100 to 145

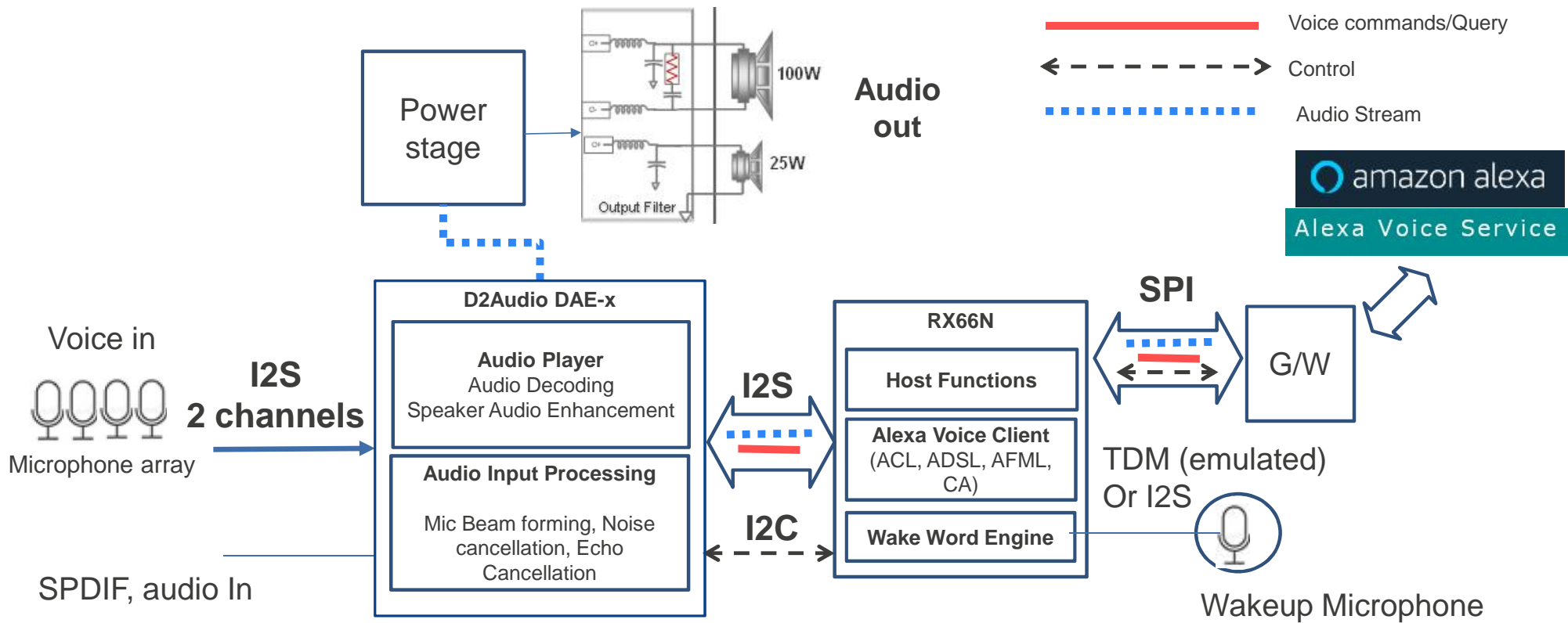
IN DEVELOPMENT : VERSION 2 OF SMART POWERED SPEAKER

New smart powered speaker design with integration of the voice control function in Renesas ICs



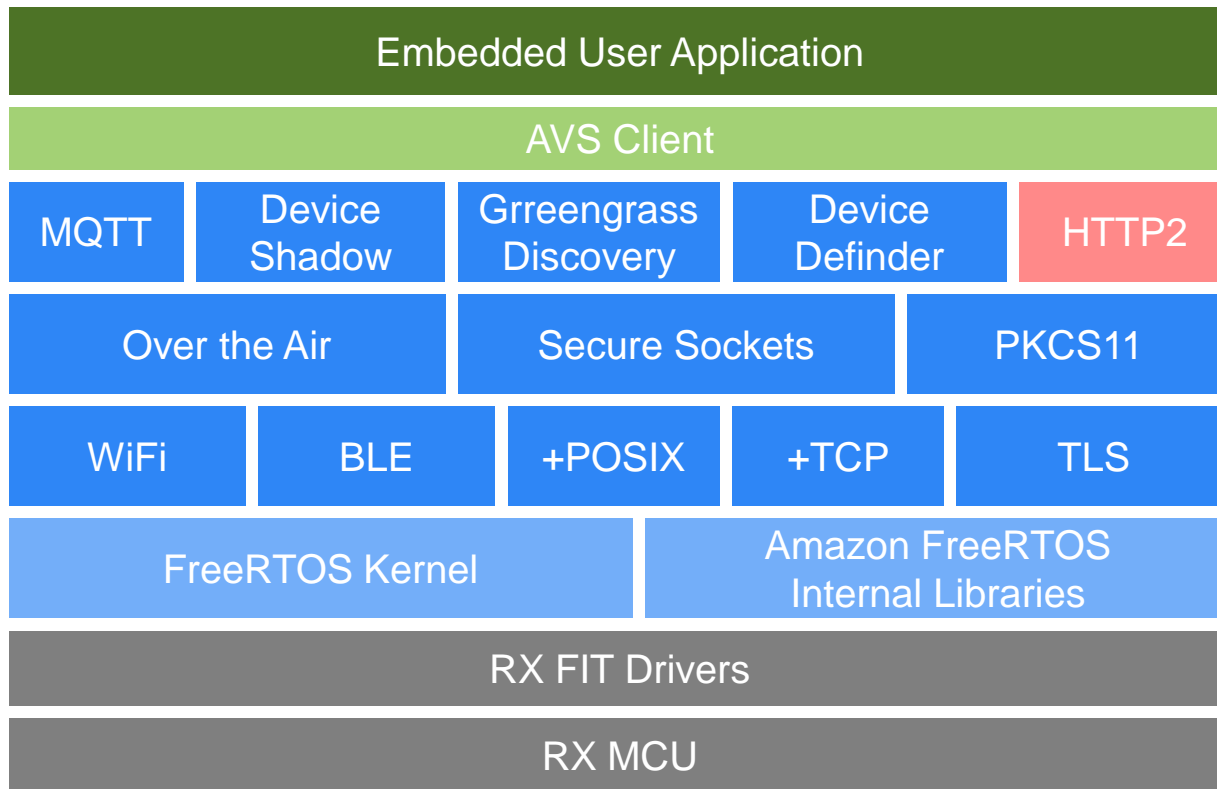
SMART SPEAKER

BLOCK DIAGRAM



SMART SPEAKER

SOFTWARE STRUCTURE



AliOS Things

AliOS Things already supported on RX600 (RX651/N) available on GitHub

DUEROS

Client should work on FreeRTOS.

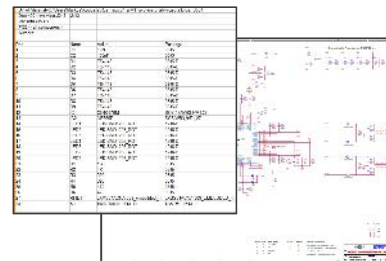
SUPPORT AVAILABLE

Evaluation Boards



Reference Design Demo Board
KS25-3WBAEVALZ

Reference Design



Brochure



Datasheets

Application Notes



D2 Audio Eval Boards
KS10-6TEVALZ
KS10-6TEVAL1Z
KS10-6TEVAL2Z
KS10-6TEVAL3Z



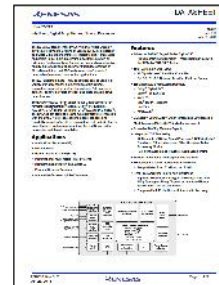
RX65N Starter Kit
[YRTK500565NS0000BE](#)
[RTK500565NS0000BE](#)
[RTK500565NS10000BE](#)
[RTK500565NS80000BE](#)



RX65N



D2-3



D2-6