

## Renesas Synergy™ Platform

# Getting Started with NetX Duo™ Web Server

---

### Introduction

This application note describes how to install, build, and run a simple web server application on a Renesas Synergy™ MCU Group Kits using the Synergy e<sup>2</sup> studio or IAR Embedded Workbench® for Renesas Synergy™ (IAR EW for Synergy) Integrated Solutions Development Environment (ISDE), the Synergy Software Package (SSP), and the Express Logic NetX Duo™ network stack.

### Goals and Objectives

This application note shows how to install, build, and run the example application. The example application supports both IPv4 and IPv6. Using your PC, you can view the web server application running on your board by observing variables being updated in a browser window when you refresh the screen.

The web server displays an IPv6 address at the bottom of the screen. You can ping the IPv6 address from a command window on your PC.

### Prerequisites

As the user of this application note, you are assumed to have some experience with the Renesas e<sup>2</sup> studio ISDE, IAR EW for Synergy, and the Synergy Software Package (SSP). For example, before you perform the procedure in this application note, you should follow the procedure in your board's *Quick Start Guide* to build and run the Blinky project. By doing so, you become familiar with e<sup>2</sup> studio and the SSP, and ensure that the debug connection to your board is functioning properly.

### Required Resources

The example application targets DK-S7G2 and PK-S5D9 Synergy MCU Group devices. To build and run the example application, you need the following:

- One of the following Renesas Synergy boards:
  - DK-S7G2 v2.0 or later
  - SK-S7G2 v2.0 or later
  - PE-HMI1 v2.0
  - PK-S5D9 v1.0 or later.
- A PC with a USB 2.0 port and an Internet connection
- The PC should be running Microsoft® Windows® 7 and have the following Renesas software installed:
  - e<sup>2</sup> studio ISDE v7.3.0 or later
  - Synergy Software Package (SSP) v1.6.0 or later
  - IAR EW for Synergy v8.23.3 or later
  - SSC v7.3.0 or later

You can download the required Renesas software from the Renesas Synergy Gallery ([www.renesas.com/synergy/software](http://www.renesas.com/synergy/software)).

### Time Required

You can install, build, and run the example application in under 30 minutes. The major steps involved require you to:

1. Connect to the target board.
2. Select an IP address for the board.
3. Import, configure, and build the project.
4. Run the NetX Duo web server demonstration.

**Contents**

1. Connecting to the Board .....3

2. Selecting an IP Address for the Board .....3

3. Importing, Configuring, and Building the Project .....6

4. Running the Example Application .....6

5. Next Steps.....10

Revision History.....12

## 1. Connecting to the Board

To configure and connect your target board:

1. Follow the procedure in your target board's *Quick Start Guide* to connect the SEGGER J-Link® debugger from your PC to the JTAG connector on the target board and power-up the board.

Note: On the DK-S7G2 board 2.0 to V3.1, set DIP switch 3 (**ENET1**) on S5 to ON. Use the Main Board Ethernet 1 port only. For other boards, there is no need to have any DIP switch settings.

On the DK-S7G2 v4.1 board, set DIP switch 3 (**ETHERNET1**) on S6 to ON. Use the Board Ethernet 1 port only. For other boards, there is no need to have any DIP switch settings.

2. Connect an Ethernet cable to the target board.
3. Connect the other end of the cable to the PC through a switch, crossover cable, or straight through to the PC using an auto MDI-X capable port.

## 2. Selecting an IP Address for the Board

Use Figure 1 and Figure 2 to configure the static IP address for the Ethernet port of your PC.

In this example, the IP address for the PC is configured as 192.168.0.200.

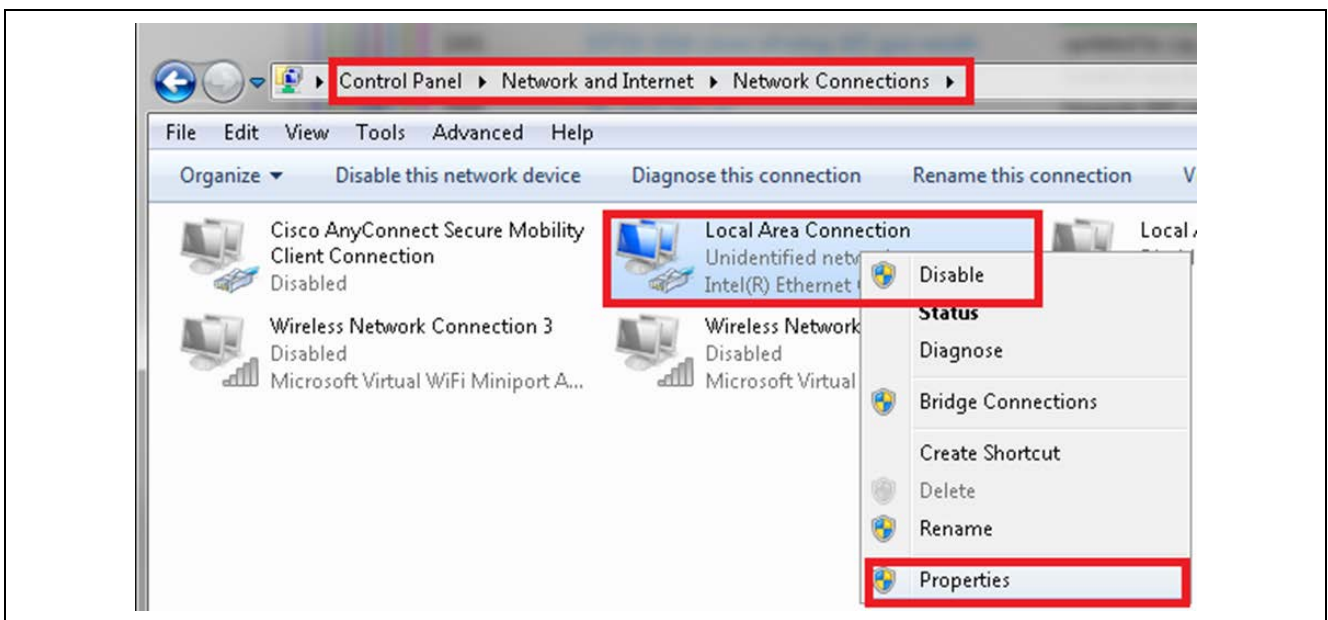


Figure 1. Configuring the PC Ethernet port to static IP address to test the board

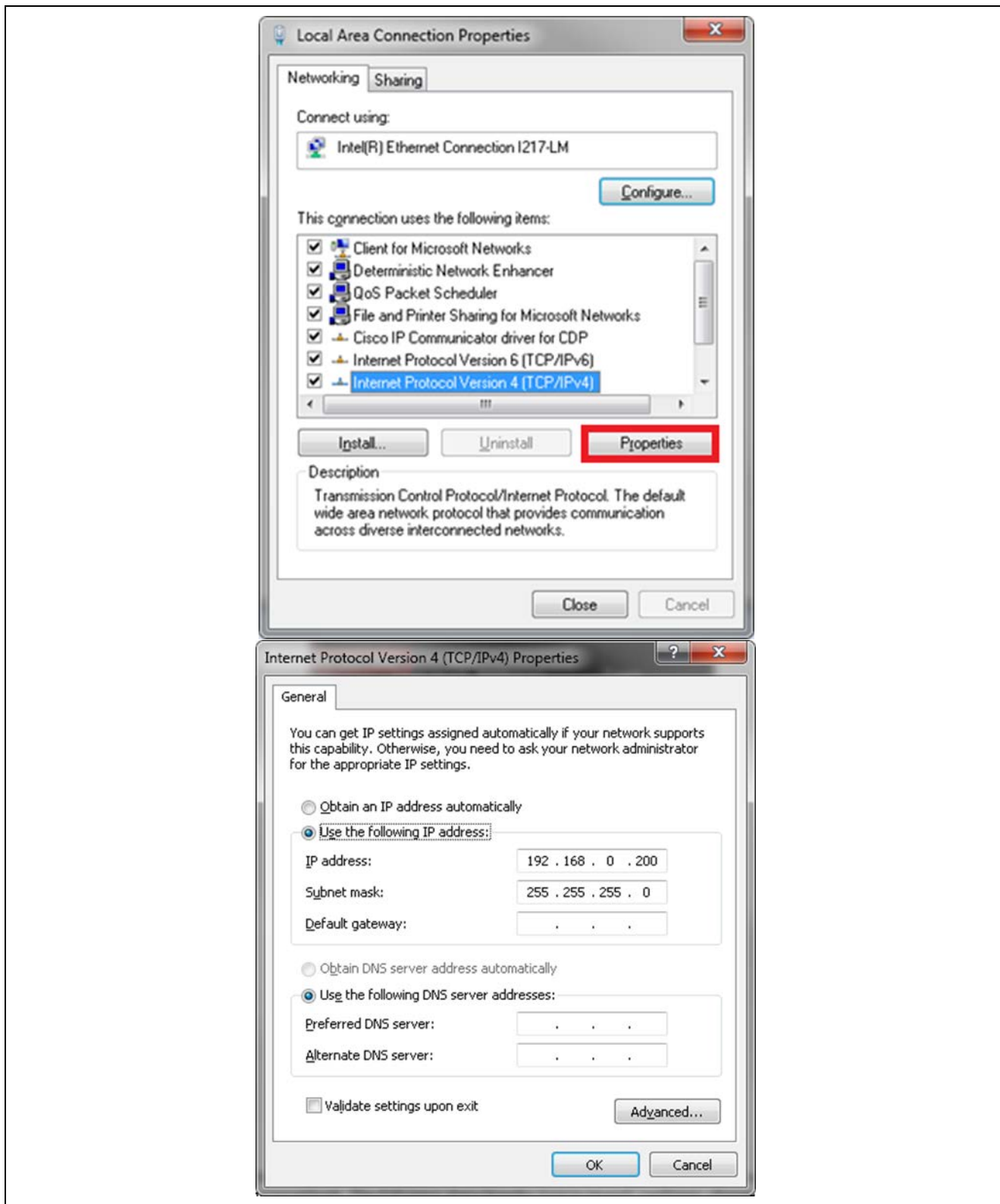



Figure 2. Static IP address for the Ethernet port of the PC

1. Run the command prompt as an administrator:

- A. Click the **Start** icon .
- B. In the search box, type **command prompt**.
- C. Right click on **Command Prompt**.
- D. Select **Run as Administrator**.
- E. A dialog box appears asking, "Do you want to allow the following program to make changes to your computer?" Click **Yes**.

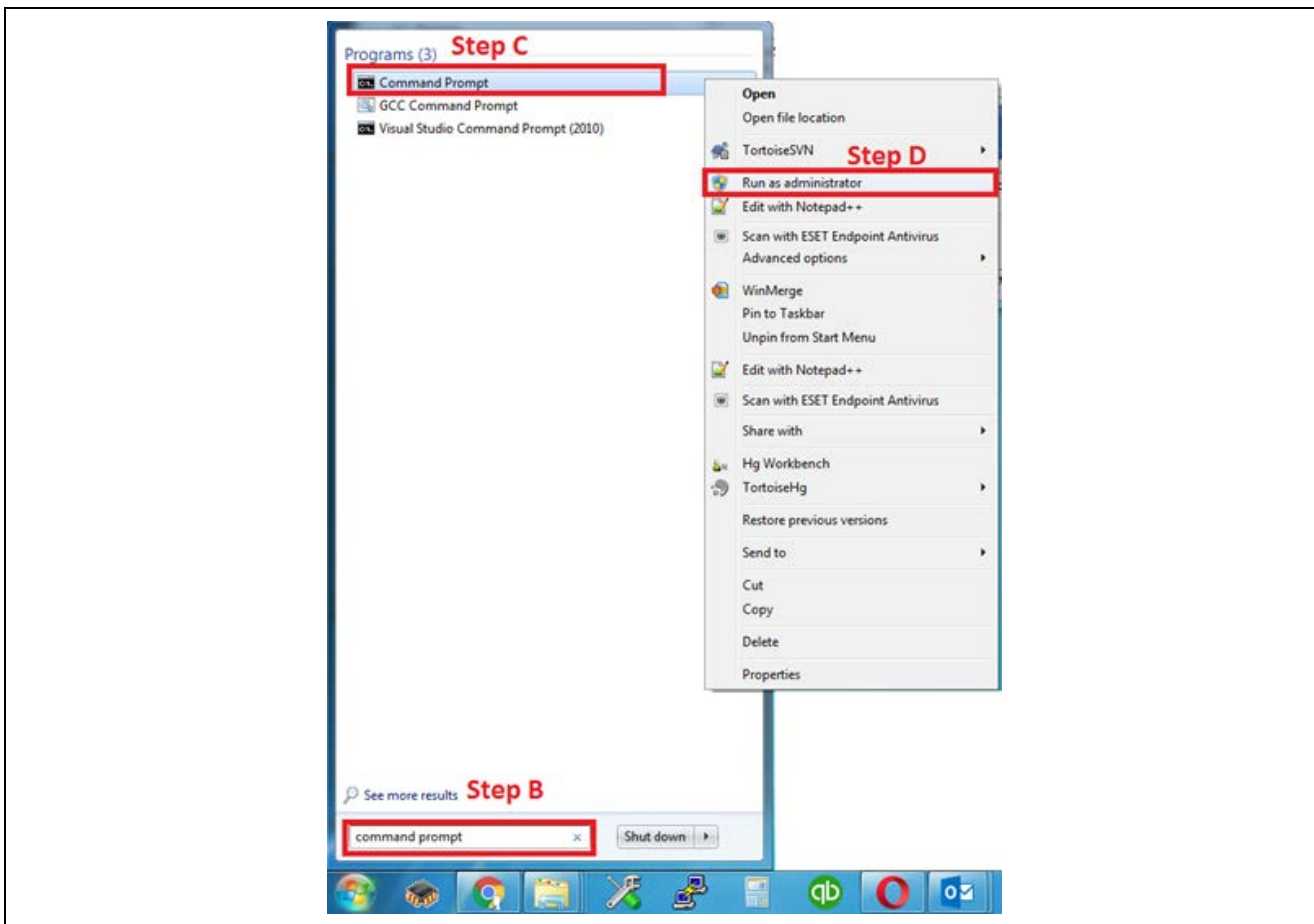


Figure 3. Command prompt as Administrator

2. In the **Command Prompt** window, enter **ipconfig**. Your results should look like the following figure.

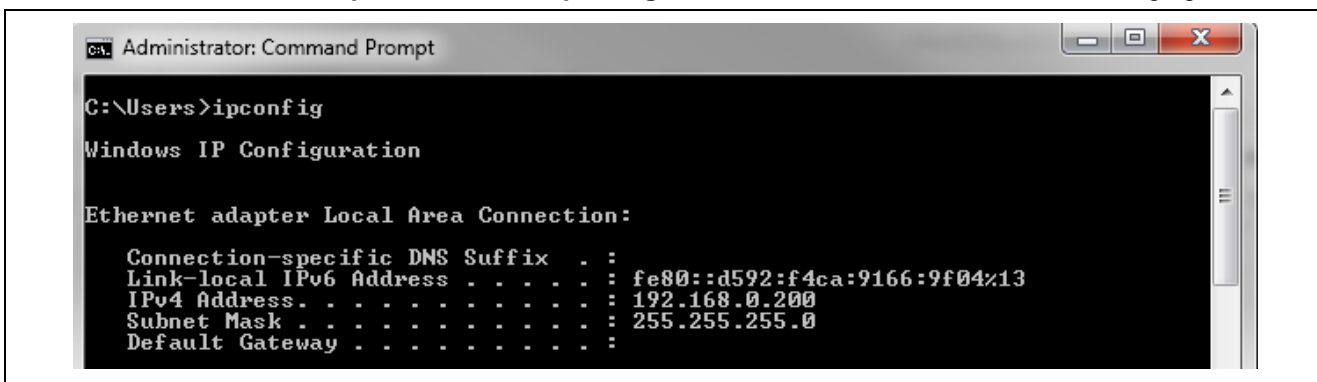


Figure 4. IP Configuration results

3. Select an IP address for the board that is different from the PC's and is not being used. In this application example, an IP address of 192.168.0.2 was chosen for the board.

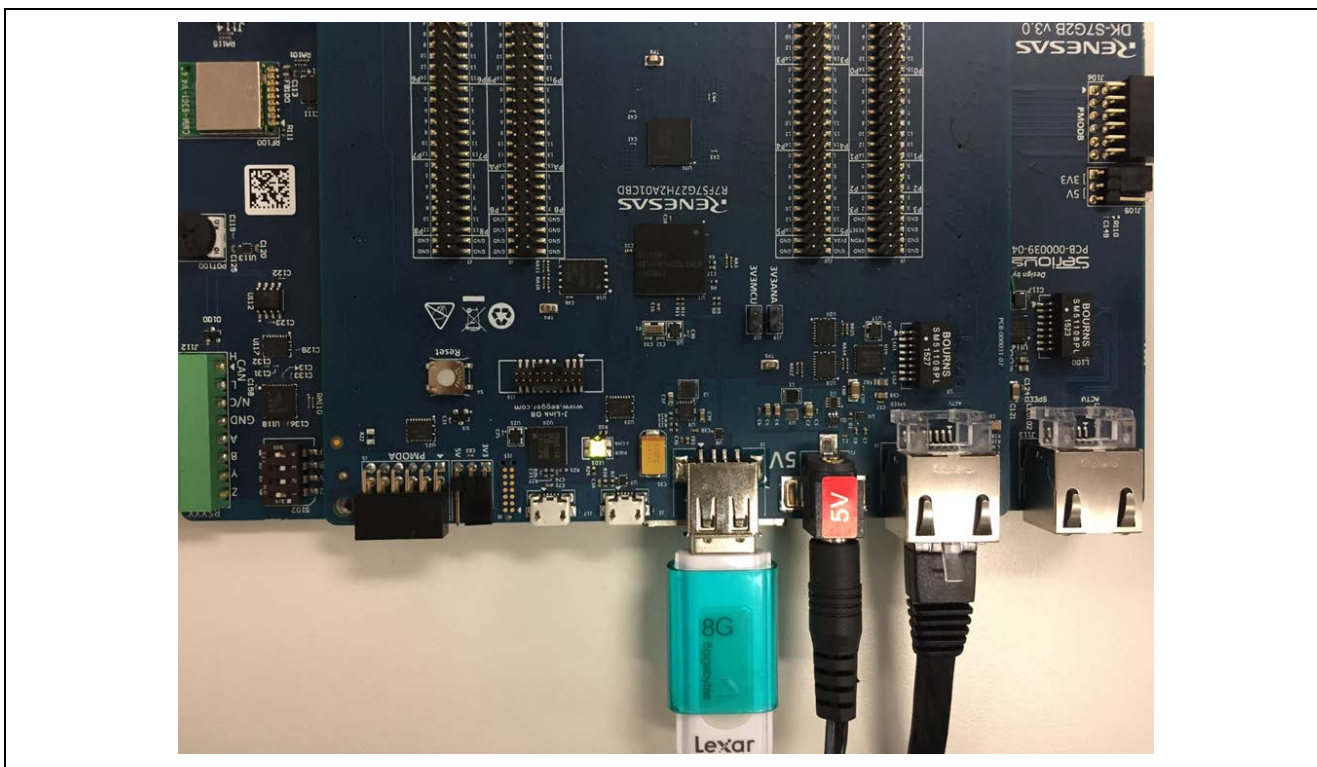
### 3. Importing, Configuring, and Building the Project

Before you can run the example application, you must change the default IP addresses for the application in the ISDE configurator to IP addresses appropriate for your network and PC. The following steps describe how to import, configure, and change the default IP address in the application to an IP address appropriate for your network, and then build the project:

1. Follow the application note, *Renesas Synergy™ Project Import Guide* (r11an0023eu0121\_synergy\_ssp.pdf), to import the project into e<sup>2</sup> studio ISDE that was included in this package. Do not build the project yet.
2. Open the configuration.xml for the project.
3. Select the **Threads Tab** and choose **HTTP Server Thread**.
4. Click the **g\_ip0, NetX Duo IP** instance in the Properties window and change the IPv4 address to the one you selected in section 2, step 3.  
The example uses 192.168.0.2 as the address, but the IPv4 address may vary based on your network settings.
5. Keep the IPv6 address setting and use it as the default selection.
6. Follow the procedures in the *Renesas Synergy™ Project Import Guide* to build and debug the project.
7. When prompted to select the debug configuration, select **NetX\_Duo\_WebServer\_XX\_XXXX Debug** (under Renesas GDB Hardware Debugging).

### 4. Running the Example Application

To run the application on the Synergy board, insert the USB Drive into the USB connector (USB Mass storage) for your board using Figure 5 (DK-S7G2), Figure 6 (PE-HMI1), or Figure 7 (SK-S7G2 and PK-S5D9), as applicable.



**Figure 5. USB drive and Ethernet connection for DK-S7G2 board**

Note: For the DK-S7G2 board, set the DIPSW S5 **ENET1** switch to **ON** and use the **Main Board Ethernet 1** port only. For other boards, no DIP switch settings are needed.



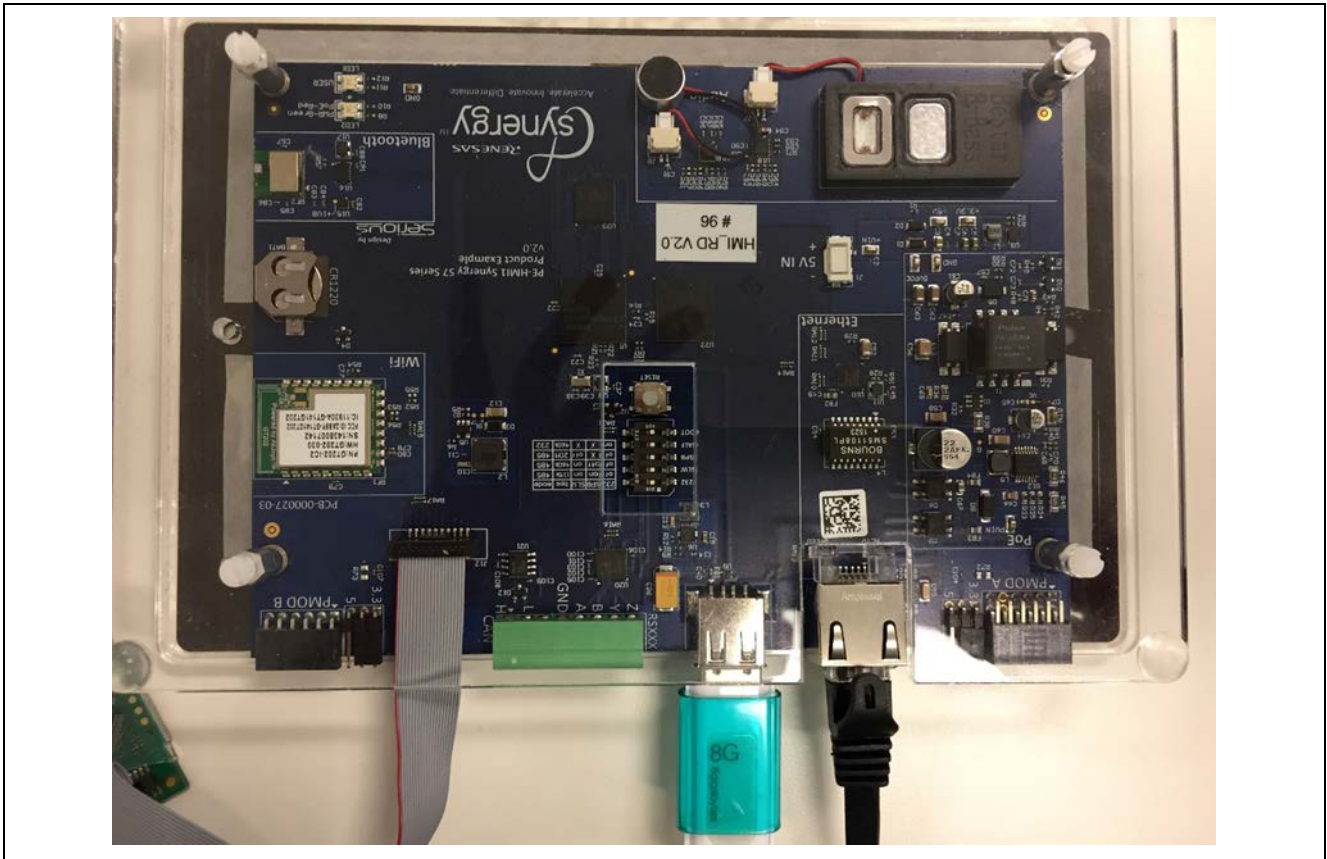


Figure 6. USB and Ethernet connection for the PE-HMI1 board

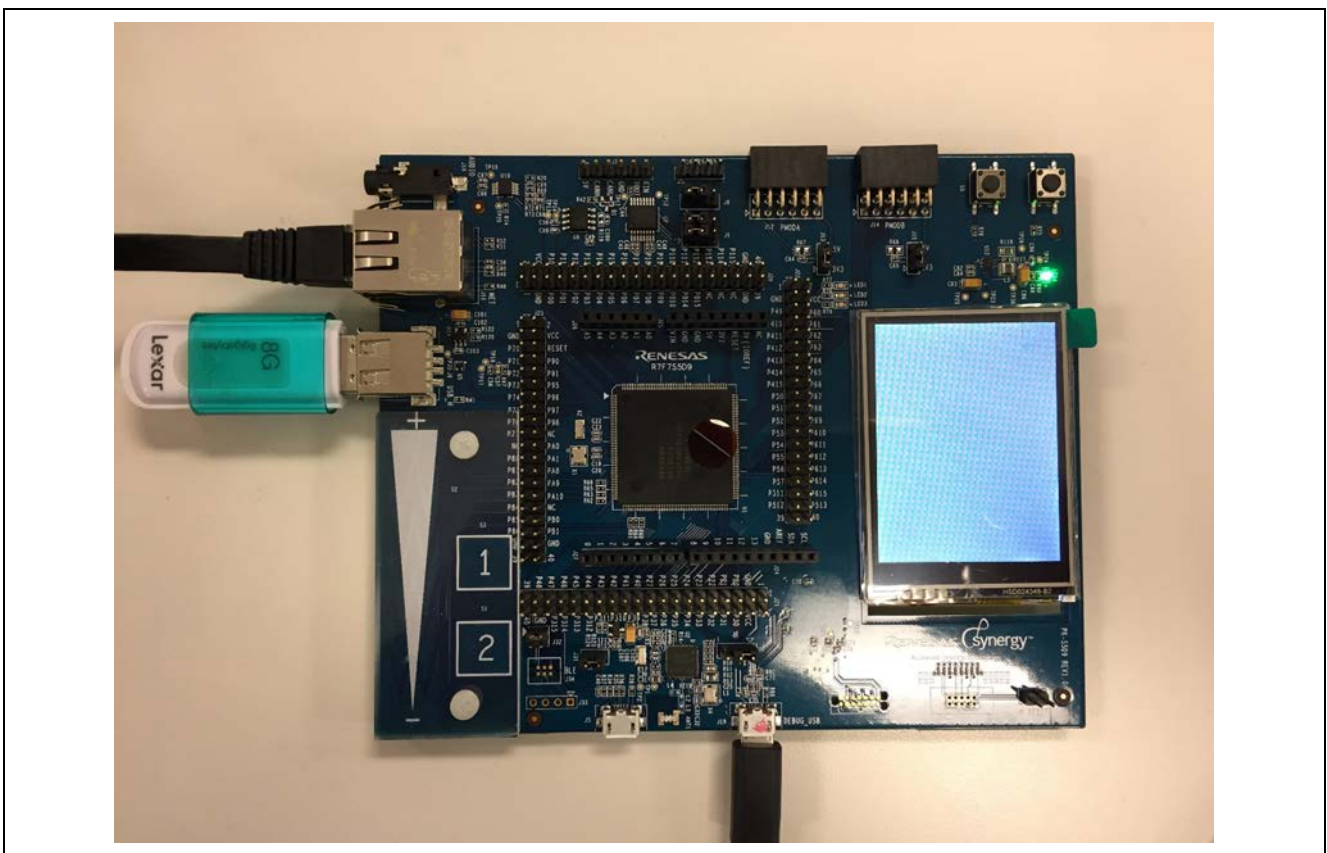
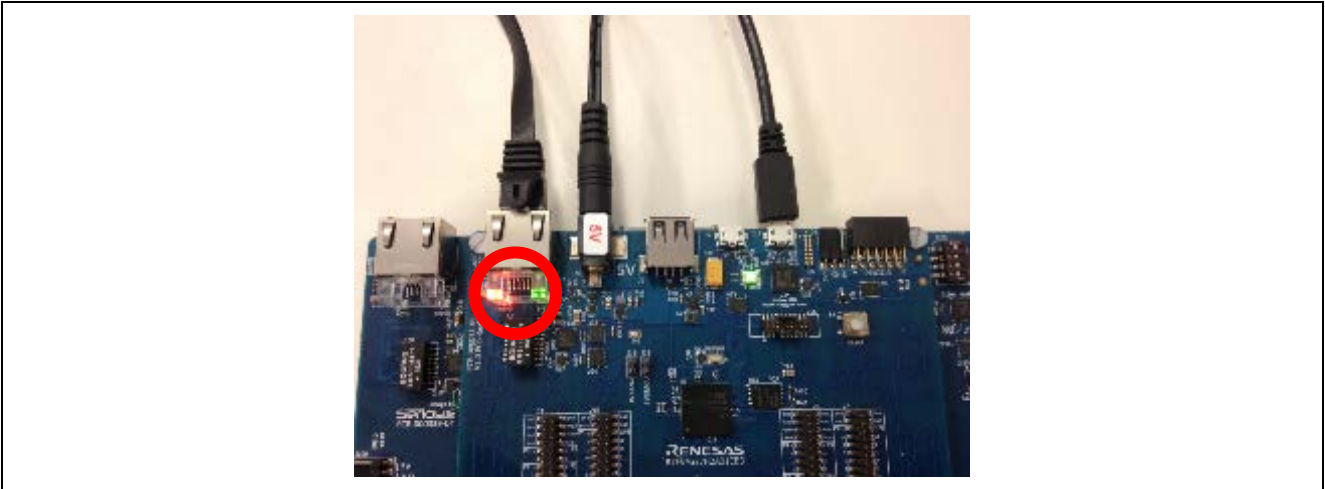


Figure 7. USB and Ethernet connection for the SK-S7G2 and PK-S5D9 board

If you properly configured, built, and have the application running, you should see the orange light constantly illuminated on the board near the Ethernet connector. A flashing green light on this connector indicates data traffic. The following figure shows the orange and green Ethernet status LEDs on a DK-S7G2 MCU board. The other kits operate the same way.



**Figure 8. Orange and green Ethernet status LEDs**

To exercise the example web server application:

1. In a command prompt window on your PC, enter the `ping` command with the IP address that you specified for the board previously (such as `192.168.0.2`). In the following example, the ping result for the board address is shown. If the connectivity and configurations are working properly, you will see ping results.

```
C:\Users>ping 192.168.0.2

Pinging 192.168.0.2 with 32 bytes of data:
Reply from 192.168.0.2: bytes=32 time=1ms TTL=128
Reply from 192.168.0.2: bytes=32 time<1ms TTL=128
Reply from 192.168.0.2: bytes=32 time=1ms TTL=128
Reply from 192.168.0.2: bytes=32 time<1ms TTL=128

Ping statistics for 192.168.0.2:
    Packets: Sent = 4, Received = 4, Lost = 0 (0% loss),
    Approximate round trip times in milli-seconds:
        Minimum = 0ms, Maximum = 1ms, Average = 0ms

C:\Users>
```

**Figure 9. Ping results**

2. In a web browser, enter the IP address used with the ping command from the previous step in the text field where you normally place a URL, like [www.google.com](http://www.google.com). You should see the following window.



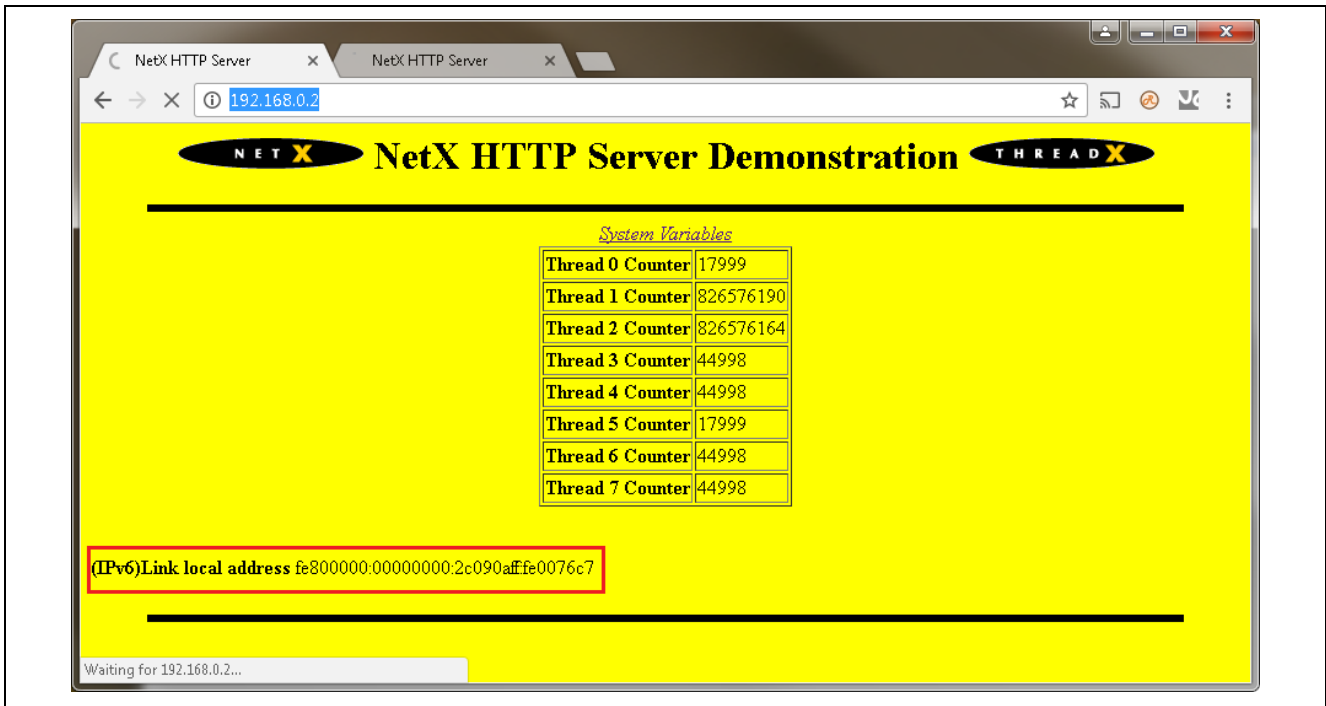


Figure 10. HTTP web page

- The local IPv6 address of the board is displayed on the bottom of the webpage. In this example, the number is fe800000:00000000:2c090aff:fe0076c7. Return to the command prompt and execute the ping command with the IPv6 address. In this example, the command would be `ping fe80::2c09:aff:fe00:76c7`.

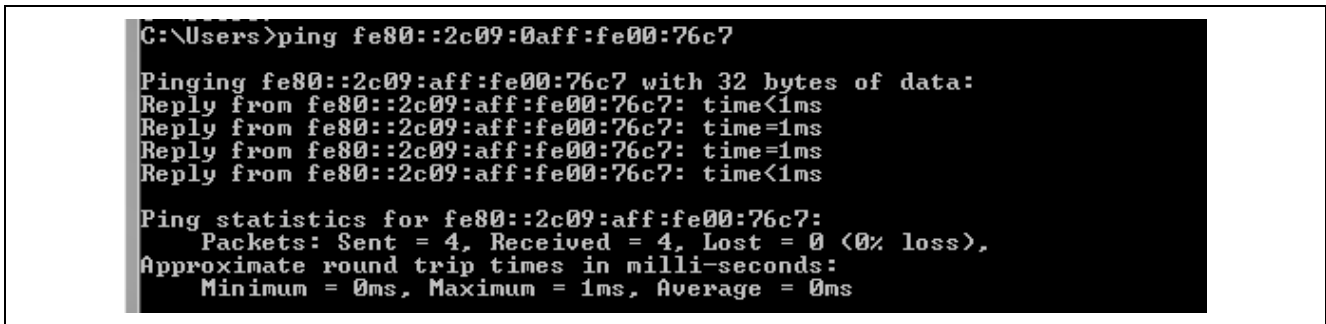
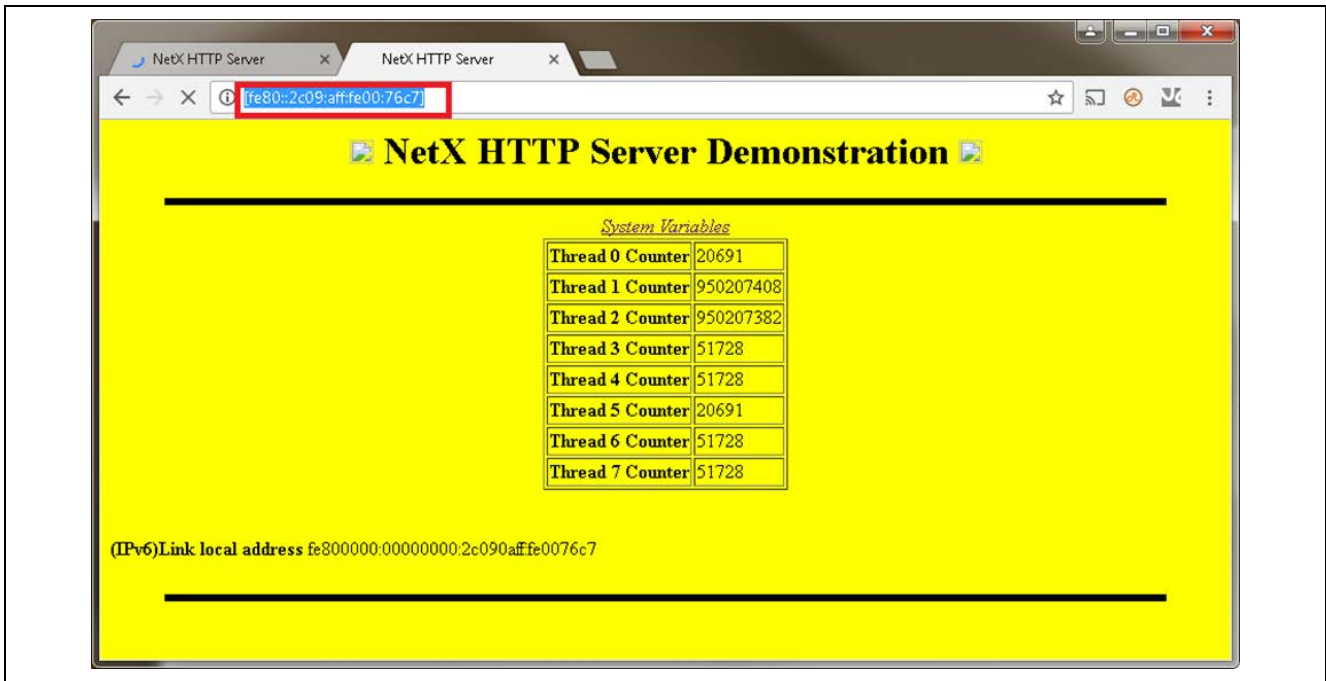


Figure 11. Pinging the board's IPv6 address

- To load the web page using the IPv6 address, enter it in the address bar with the format [fe80::2c09:aff:fe00:76c7], including the brackets.



**Figure 12. Hosted web page using IPv6 address**

Note: The example application supports only IPv6 link local addresses. If you need an IPv6 address outside of your local network, you must add the processing to set the address for the application

5. Click the **Terminate** button to close the debugger.

## 5. Next Steps

After you run the example application, you can learn more about how the application works and the API calls involved, by examining the application source code.

You can also download additional Synergy example applications from the following URL: [www.renesas.com/synergy/applicationprojects](http://www.renesas.com/synergy/applicationprojects)

## Website and Support

Visit the following vanity URLs to learn about key elements of the Synergy Platform, download components and related documentation, and get support.

Synergy Software	<a href="http://www.renesas.com/synergy/software">www.renesas.com/synergy/software</a>
Synergy Software Package	<a href="http://www.renesas.com/synergy/ssp">www.renesas.com/synergy/ssp</a>
Software add-ons	<a href="http://www.renesas.com/synergy/addons">www.renesas.com/synergy/addons</a>
Software glossary	<a href="http://www.renesas.com/synergy/softwareglossary">www.renesas.com/synergy/softwareglossary</a>
Development tools	<a href="http://www.renesas.com/synergy/tools">www.renesas.com/synergy/tools</a>
Synergy Hardware	<a href="http://www.renesas.com/synergy/hardware">www.renesas.com/synergy/hardware</a>
Microcontrollers	<a href="http://www.renesas.com/synergy/mcus">www.renesas.com/synergy/mcus</a>
MCU glossary	<a href="http://www.renesas.com/synergy/mcuglossary">www.renesas.com/synergy/mcuglossary</a>
Parametric search	<a href="http://www.renesas.com/synergy/parametric">www.renesas.com/synergy/parametric</a>
Kits	<a href="http://www.renesas.com/synergy/kits">www.renesas.com/synergy/kits</a>
Synergy Solutions Gallery	<a href="http://www.renesas.com/synergy/solutionsgallery">www.renesas.com/synergy/solutionsgallery</a>
Partner projects	<a href="http://www.renesas.com/synergy/partnerprojects">www.renesas.com/synergy/partnerprojects</a>
Application projects	<a href="http://www.renesas.com/synergy/applicationprojects">www.renesas.com/synergy/applicationprojects</a>
Self-service support resources:	
Documentation	<a href="http://www.renesas.com/synergy/docs">www.renesas.com/synergy/docs</a>
Knowledgebase	<a href="http://www.renesas.com/synergy/knowledgebase">www.renesas.com/synergy/knowledgebase</a>
Forums	<a href="http://www.renesas.com/synergy/forum">www.renesas.com/synergy/forum</a>
Training	<a href="http://www.renesas.com/synergy/training">www.renesas.com/synergy/training</a>
Videos	<a href="http://www.renesas.com/synergy/videos">www.renesas.com/synergy/videos</a>
Chat and web ticket	<a href="http://www.renesas.com/synergy/resourcelibrary">www.renesas.com/synergy/resourcelibrary</a>

**Revision History**

Rev.	Date	Description	
		Page	Summary
1.00	May.12.16	—	Initial version
1.01	Oct.21.16	—	Minor format changes
1.02	Feb.28.17	—	Updated for SSP 1.2.0
1.03	Aug.28.17	—	Updated to SSP 1.3.0
1.04	Sep.27.17	1	Required resources of SSP version changed
1.05	Feb.27.18	—	Updated for SSP v1.4.0
1.06	Apr.09.18	9	Fixed link in Next Steps
1.07	Sep.06.18	—	Updated for SSP v1.5.0
1.08	Mar.15.19	—	Updated to SSP 1.6.0

## Notice

1. Descriptions of circuits, software and other related information in this document are provided only to illustrate the operation of semiconductor products and application examples. You are fully responsible for the incorporation or any other use of the circuits, software, and information in the design of your product or system. Renesas Electronics disclaims any and all liability for any losses and damages incurred by you or third parties arising from the use of these circuits, software, or information.
2. Renesas Electronics hereby expressly disclaims any warranties against and liability for infringement or any other claims involving patents, copyrights, or other intellectual property rights of third parties, by or arising from the use of Renesas Electronics products or technical information described in this document, including but not limited to, the product data, drawings, charts, programs, algorithms, and application examples.
3. No license, express, implied or otherwise, is granted hereby under any patents, copyrights or other intellectual property rights of Renesas Electronics or others.
4. You shall not alter, modify, copy, or reverse engineer any Renesas Electronics product, whether in whole or in part. Renesas Electronics disclaims any and all liability for any losses or damages incurred by you or third parties arising from such alteration, modification, copying or reverse engineering.
5. Renesas Electronics products are classified according to the following two quality grades: "Standard" and "High Quality". The intended applications for each Renesas Electronics product depends on the product's quality grade, as indicated below.
  - "Standard": Computers; office equipment; communications equipment; test and measurement equipment; audio and visual equipment; home electronic appliances; machine tools; personal electronic equipment; industrial robots; etc.
  - "High Quality": Transportation equipment (automobiles, trains, ships, etc.); traffic control (traffic lights); large-scale communication equipment; key financial terminal systems; safety control equipment; etc.

Unless expressly designated as a high reliability product or a product for harsh environments in a Renesas Electronics data sheet or other Renesas Electronics document, Renesas Electronics products are not intended or authorized for use in products or systems that may pose a direct threat to human life or bodily injury (artificial life support devices or systems; surgical implantations; etc.), or may cause serious property damage (space system; undersea repeaters; nuclear power control systems; aircraft control systems; key plant systems; military equipment; etc.). Renesas Electronics disclaims any and all liability for any damages or losses incurred by you or any third parties arising from the use of any Renesas Electronics product that is inconsistent with any Renesas Electronics data sheet, user's manual or other Renesas Electronics document.
6. When using Renesas Electronics products, refer to the latest product information (data sheets, user's manuals, application notes, "General Notes for Handling and Using Semiconductor Devices" in the reliability handbook, etc.), and ensure that usage conditions are within the ranges specified by Renesas Electronics with respect to maximum ratings, operating power supply voltage range, heat dissipation characteristics, installation, etc. Renesas Electronics disclaims any and all liability for any malfunctions, failure or accident arising out of the use of Renesas Electronics products outside of such specified ranges.
7. Although Renesas Electronics endeavors to improve the quality and reliability of Renesas Electronics products, semiconductor products have specific characteristics, such as the occurrence of failure at a certain rate and malfunctions under certain use conditions. Unless designated as a high reliability product or a product for harsh environments in a Renesas Electronics data sheet or other Renesas Electronics document, Renesas Electronics products are not subject to radiation resistance design. You are responsible for implementing safety measures to guard against the possibility of bodily injury, injury or damage caused by fire, and/or danger to the public in the event of a failure or malfunction of Renesas Electronics products, such as safety design for hardware and software, including but not limited to redundancy, fire control and malfunction prevention, appropriate treatment for aging degradation or any other appropriate measures. Because the evaluation of microcomputer software alone is very difficult and impractical, you are responsible for evaluating the safety of the final products or systems manufactured by you.
8. Please contact a Renesas Electronics sales office for details as to environmental matters such as the environmental compatibility of each Renesas Electronics product. You are responsible for carefully and sufficiently investigating applicable laws and regulations that regulate the inclusion or use of controlled substances, including without limitation, the EU RoHS Directive, and using Renesas Electronics products in compliance with all these applicable laws and regulations. Renesas Electronics disclaims any and all liability for damages or losses occurring as a result of your noncompliance with applicable laws and regulations.
9. Renesas Electronics products and technologies shall not be used for or incorporated into any products or systems whose manufacture, use, or sale is prohibited under any applicable domestic or foreign laws or regulations. You shall comply with any applicable export control laws and regulations promulgated and administered by the governments of any countries asserting jurisdiction over the parties or transactions.
10. It is the responsibility of the buyer or distributor of Renesas Electronics products, or any other party who distributes, disposes of, or otherwise sells or transfers the product to a third party, to notify such third party in advance of the contents and conditions set forth in this document.
11. This document shall not be reprinted, reproduced or duplicated in any form, in whole or in part, without prior written consent of Renesas Electronics.
12. Please contact a Renesas Electronics sales office if you have any questions regarding the information contained in this document or Renesas Electronics products.

(Note1) "Renesas Electronics" as used in this document means Renesas Electronics Corporation and also includes its directly or indirectly controlled subsidiaries.

(Note2) "Renesas Electronics product(s)" means any product developed or manufactured by or for Renesas Electronics.

(Rev.4.0-1 November 2017)

## Corporate Headquarters

TOYOSU FORESIA, 3-2-24 Toyosu,  
Koto-ku, Tokyo 135-0061, Japan  
[www.renesas.com](http://www.renesas.com)

## Trademarks

Renesas and the Renesas logo are trademarks of Renesas Electronics Corporation. All trademarks and registered trademarks are the property of their respective owners.

## Contact information

For further information on a product, technology, the most up-to-date version of a document, or your nearest sales office, please visit:  
[www.renesas.com/contact/](http://www.renesas.com/contact/).