

ISL71710M

Radiation Tolerant Active-Input High Speed Digital Isolator

FN9364  
Rev.0.00  
Nov 9, 2018

The [ISL71710M](#) is an active input digital signal isolator with CMOS output, using Giant Magnetoresistive (GMR) technology for small size, high speed, and low power. The ISL71710M is the fastest isolator of its type, with a 150Mbps typical data rate. The symmetric magnetic coupling barrier provides a typical propagation delay of only 10ns and a pulse-width distortion as low as 0.3ns, achieving the best specifications of any isolator.

The ISL71710M has unsurpassed common-mode transient immunity of 50kV/μs. It is ideal for isolating applications such as PROFIBUS, RS-485, and RS-422.

The ISL71710M is offered in an 8 Ld 5mmx4mm SOIC package and is fully specified across the military ambient temperature range of -55°C to +125°C.

**Applications**

- Isolated power
- RS-485 and RS-422
- CAN bus/device net
- Multiplexed data transmission
- Data interfaces
- Board-to-board communication
- Ground loop elimination
- Peripheral interfaces
- Serial communication
- Logic level shifting

**Related Literature**

For a full list of related documents, visit our website:

- [ISL71710M](#) product page

**Features**

- Barrier Voltage Endurance
  - 2.5kV<sub>RMS</sub> for 1 minute, 600VRMS continuous (VDE V 0884-10 certified: file 5022321-4880-0001)
  - 1.5kV<sub>DC</sub> continuous
  - 500V<sub>DC</sub> at 43MeV•cm<sup>2</sup>/mg SEDR
- UL 1577 recognized: file reference E483309
- 5V/3.3V CMOS/TTL compatible
- High speed: 150Mbps typical
- 10ns typical propagation delay
- 300ps typical pulse-width distortion
- 4ns typical propagation delay skew
- 50kV/μs typical common-mode transient immunity
- Low EMI/RFI emissions
- Excellent magnetic immunity
- Passes NASA low outgassing specifications
- NiPdAu-Ag leadframes (Pb-free, Sn-free)
- Full military temperature range operation
  - T<sub>A</sub> = -55°C to +125°C
  - T<sub>J</sub> = -55°C to +150°C
- Radiation characterization
  - Low Lose Rate (LDR) (0.01rad(Si)/s): 30krad(Si)
- SEE characterization
  - No SEB/SEL LET, V<sub>DD</sub> = 7V: 43MeV•cm<sup>2</sup>/mg

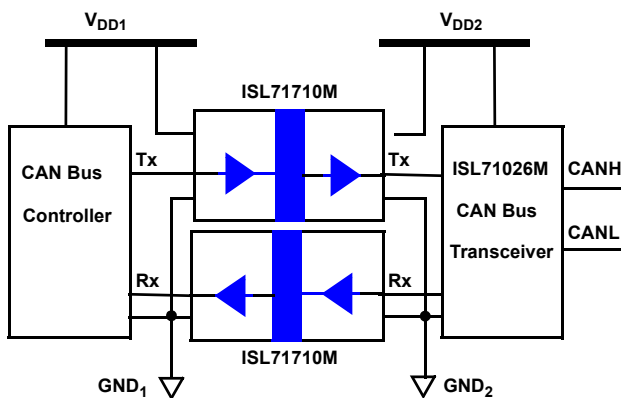


Figure 1. Typical CAN Bus Application

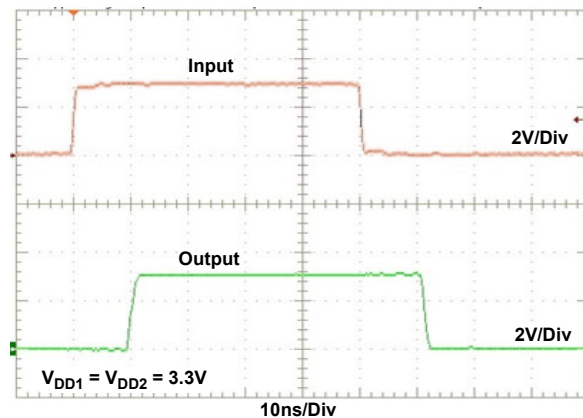


Figure 2. 10MHz Input and Output Waveforms

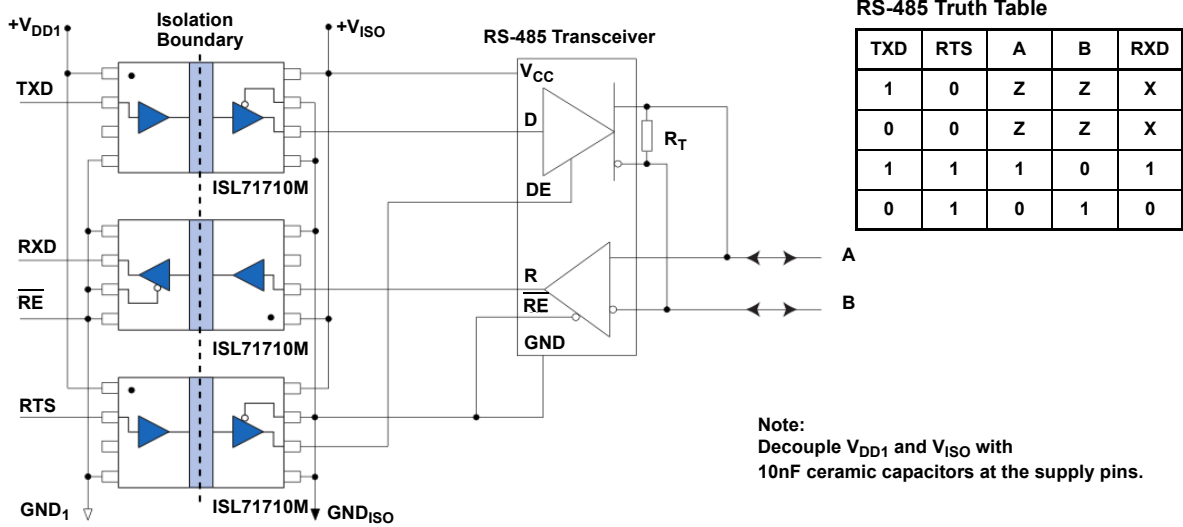


Figure 3. RS-485 Multi-Chip Isolated Transceiver Application Schematic

---

## Contents

<b>1. Overview</b>	<b>4</b>
1.1 Functional Block Diagram	4
1.2 Ordering Information	4
1.3 Pin Configuration	4
1.4 Pin Descriptions	4
1.5 Timing Diagram	5
<b>2. Specifications</b>	<b>6</b>
2.1 Absolute Maximum Ratings	6
2.2 Outgas Testing	6
2.3 Thermal Information	6
2.4 Recommended Operating Conditions	7
2.5 Insulation Specifications	7
2.6 Safety and Approvals	7
2.7 Electrical Specifications	8
<b>3. Typical Performance Curves</b>	<b>11</b>
<b>4. Device Information</b>	<b>15</b>
4.1 Electrostatic Discharge Sensitivity	15
4.2 Electromagnetic Compatibility	15
4.3 Dynamic Power Consumption	15
4.4 Power Supply Decoupling	15
4.5 Signal Status on Start-Up and Shutdown	16
4.6 Data Transmission Rates	16
<b>5. Radiation Tolerance</b>	<b>17</b>
5.1 Total Ionizing Dose (TID) Testing	17
5.2 Single Event Effects Testing	19
<b>6. Revision History</b>	<b>24</b>
<b>7. Package Outline Drawing</b>	<b>25</b>

## 1. Overview

### 1.1 Functional Block Diagram

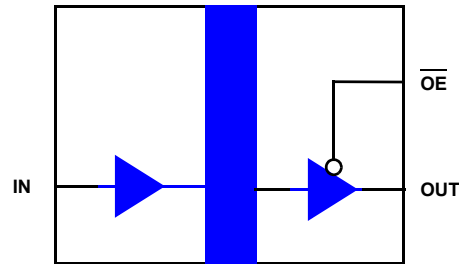


Figure 4. ISL71710M Block Diagram

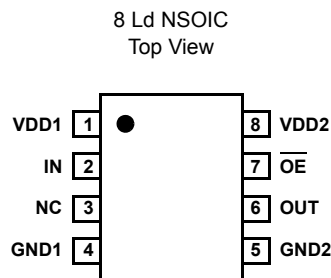
### 1.2 Ordering Information

Part Number	Part Marking	Temperature Range (°C)	Tape and Reel (Units) (Note 1)	Package (RoHS Compliant)	Package Drawing
ISL71710MBZ	71710 MBZ	-55 to +125	-	8 Ld NSOIC	M8.15G
ISL71710MBZ-T	71710 MBZ	-55 to +125	2.5k	8 Ld NSOIC	M8.15G
ISL71710MBZ-T7A	71710 MBZ	-55 to +125	250	8 Ld NSOIC	M8.15G
ISL71610-710EV1Z	Evaluation Board				

Notes:

1. Refer to [TB347](#) for details about reel specifications.
2. These Pb-free plastic packaged products employ special Pb-free material sets; molding compounds/die attach materials and NiPdAu-Ag plate-e4 termination finish, which is RoHS compliant and compatible with both SnPb and Pb-free soldering operations. Pb-free products are MSL classified at Pb-free peak reflow temperatures that meet or exceed the Pb-free requirements of IPC/JEDEC J STD-020.
3. For Moisture Sensitivity Level (MSL), see the [ISL71710M](#) product information page. For more information about MSL, see [TB363](#).

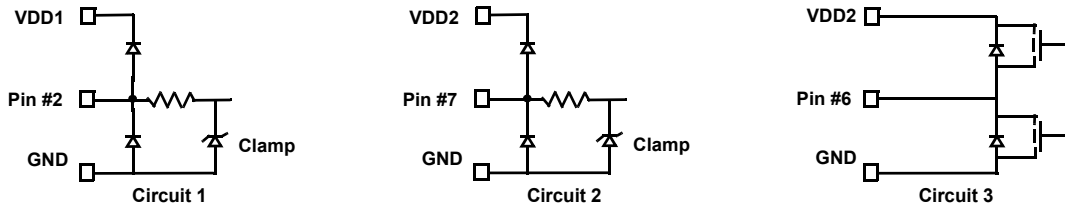
### 1.3 Pin Configuration



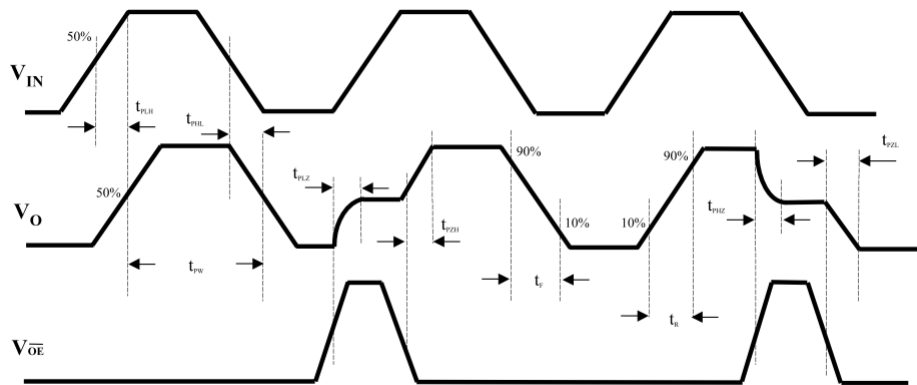
### 1.4 Pin Descriptions

Pin Number	Pin Name	ESD Circuit	Description
1	VDD1	N/A	Supply voltage
2	IN	1	Data in
3	NC	N/A	No internal connection. Leave this pin floating or connect it to VDD1 or GND1.
4	GND1	N/A	Ground return for VDD1

Pin Number	Pin Name	ESD Circuit	Description
5	GND2	N/A	Ground return for VDD2
6	OUT	3	Data output
7	$\overline{OE}$	2	Output enable, active low. Internally pulled low with 100k $\Omega$ to enable the output when this pin is not connected.
8	VDD2	N/A	Supply voltage



### 1.5 Timing Diagram



**Legend**

$t_{PLH}$	Propagation Delay, Low-to-High
$t_{PHL}$	Propagation Delay, High-to-Low
$t_{PW}$	Minimum Pulse Width
$t_{PLZ}$	Propagation Delay, Low-to-High Impedance
$t_{PZH}$	Propagation Delay, High Impedance-to-High
$t_{PHZ}$	Propagation Delay, High-to-High Impedance
$t_{PZL}$	Propagation Delay, High Impedance-to-Low
$t_R$	Rise Time
$t_F$	Fall Time

Figure 5. Timing Diagram

## 2. Specifications

### 2.1 Absolute Maximum Ratings

Parameter	Minimum	Maximum	Unit
Maximum Supply Voltage, VDD1 to GND1	-0.5	+7	V
Maximum Supply Voltage, VDD2 to GND2	-0.5	+7	V
In-Beam Maximum Supply Voltage VDD1 to GND1	-0.5	+7	V
In-Beam Maximum Supply Voltage VDD2 to GND2	-0.5	+7	V
IN Voltage	-0.5	$V_{DD1} + 0.5$	V
$\overline{OE}$ Voltage	-0.5	$V_{DD2} + 0.5$	V
OUT Voltage	-0.5	$V_{DD2} + 0.5$	V
Output Current Drive	-	10	mA
ESD Rating	Value		Unit
Human Body Model (Tested per AEC-Q100-002)	1.2		kV
Charge Device Model (Tested per AEC-Q100-011)	1.5		kV
Latch-up (Tested per JESD-78E; Class 2, Level A) at +125°C	100		mA

CAUTION: Do not operate at or near the maximum ratings listed for extended periods of time. Exposure to such conditions can adversely impact product reliability and result in failures not covered by warranty.

### 2.2 Outgas Testing

Specification (Tested per ASTM E 595, 1.5)	Value	Unit
Total Mass Lost ( <a href="#">Note 4</a> )	0.06	%
Collected Volatile Condensable Material ( <a href="#">Note 4</a> )	<0.01	%
Water Vapor Recovered	0.03	%

Notes:

- Results meet NASA low outgassing requirements of "Total Mass Loss" of <1% and "Collected Volatile Condensable Material" of <0.1%.

### 2.3 Thermal Information

Thermal Resistance (Typical)	$\theta_{JA}$ (°C/W)	$\Psi_{JT}$ (°C/W)
8 Ld SOIC Package ( <a href="#">Notes 5, 6</a> )	60	10

Notes:

- $\theta_{JA}$  is measured with the component soldered to double-sided board; free air.
- For  $\Psi_{JT}$  characterization parameter, the package top temperature is measured at the top center of the mounted package. See [TB379](#).

Parameter	Minimum	Maximum	Unit
Power Dissipation, $P_D$	-	675	mW
Maximum Junction Temperature	-	+150	°C
Storage Temperature Range	-65	+150	°C
Pb-Free Reflow Profile	Refer to <a href="#">TB493</a>		

## 2.4 Recommended Operating Conditions

Parameter	Minimum	Maximum	Unit
Ambient Operating Temperature	-55	+125	°C
Supply Voltage $V_{DD1}$ , $V_{DD2}$	3.0	5.5	V
IN Logic High Voltage	2.4	$V_{DD1}$	V
IN Logic Low Voltage	0	0.8	V
$\overline{OE}$ Logic High Voltage	2.4	$V_{DD2}$	V
$\overline{OE}$ Logic Low Voltage	0	0.8	V
Input Signal Rise and Fall Time	-	1	$\mu$ s

## 2.5 Insulation Specifications

Parameter	Symbol	Test Conditions	Min	Typ	Max	Unit
Creepage Distance (external)			4.03	-	-	mm
Total Barrier Thickness (internal)			12	13	-	$\mu$ m
Leakage Current ( <a href="#">Note 7</a> )		240V <sub>RMS</sub> , 60Hz	-	200	-	nA
Barrier Resistance( <a href="#">Note 7</a> )	$R_{IO}$	500V <sub>DC</sub>	-	$>10^{14}$	-	$\Omega$
Barrier Capacitance ( <a href="#">Note 7</a> )	$C_{IO}$	1MHz	-	1.1	-	pF
Comparative Tracking Index	CTI	Per IEC:60112	$\geq 175$	-	-	V
Working Voltage	$V_{IORM}$	Per VDE V 0884-10, V084-11 pending	600	-	-	V <sub>RMS</sub>
Barrier Life		100°C, 1000V <sub>RMS</sub> , 60% Confidence Level activation energy	-	44000	-	Years

7. Device is considered a two terminal device: Pins 1-4 shorted and Pins 5-8 shorted.

## 2.6 Safety and Approvals

### VDE V 0884-10 (VDE V 0884-11 pending) (Basic Isolation; VDE File Number 5022321-4880-0001)

- Working voltage ( $V_{IORM}$ ): 600V<sub>RMS</sub> (848V<sub>PK</sub>); basic insulation; pollution degree 2
- Isolation voltage ( $V_{ISO}$ ): 2500V<sub>RMS</sub>
- Transient overvoltage ( $V_{IOTM}$ ): 4000V<sub>PK</sub>
- Surge rating: 4000V
- Each part tested at 1590V<sub>PK</sub> for 1s, 5pC partial discharge limit
- Samples tested at 4000V<sub>PK</sub> for 60s; then 1358V<sub>PK</sub> for 10s with 5pC partial discharge limit

Safety-Limiting Values	Symbol	Value	Unit
Safety Rating Ambient Temperature	$T_S$	+180	°C
Safety Rating Power	$P_S$	270	mW
Supply Current Safety Rating (Total of Supplies)	$I_S$	54	mA

### UL 1577 (Component Recognition Program File Number E483309)

- Each part tested at 3000V<sub>RMS</sub> (4240V<sub>PK</sub>) for 1s; each lot sample tested at 2500V<sub>RMS</sub> (3530V<sub>PK</sub>) for 1min

## 2.7 Electrical Specifications

Unless otherwise noted,  $V_{DD1}$   $V_{DD2} = 3V - 5.5V$ ; OUT and  $\overline{OE}$  are open,  $V_{DD1}$  and  $V_{DD2}$  are bypassed to GND with a 47nF X7R capacitor;  $T_A = T_J = +25^\circ C$ . Limits apply across the operating temperature range,  $-55^\circ C$  to  $+125^\circ C$  unless otherwise stated.

Parameter	Symbol	Test Conditions	Min (Note 16)	Typ	Max (Note 16)	Unit
<b>3.3V Electrical Specifications</b>						
Input Quiescent Supply Current (Figure 12)	$I_{DD1}$		-	8	40	$\mu A$
Output Quiescent Supply Current (Figure 13)	$I_{DD2}$		-	1.2	1.75	mA
Logic Input Current	$I_I$		-10	-	10	$\mu A$
Logic High Output Voltage (Figure 20)	$V_{OH}$	$I_O = -20\mu A, V_I = V_{IH}$	$V_{DD} - 0.1$	$V_{DD}$	-	V
		$I_O = -4mA, V_I = V_{IH}$	$0.8 \times V_{DD}$	$0.9 \times V_{DD}$	-	V
Logic Low Output Voltage (Figure 21)	$V_{OL}$	$I_O = 20\mu A, V_I = V_{IL}$	-	0	0.1	V
		$I_O = 4mA, V_I = V_{IL}$	-	0.5	0.8	V
<b>Switching Specifications (<math>V_{DD} = 3.3V</math>)</b>						
Maximum Data Rate		$C_L = 15pF$	130	140	-	Mbps
Pulse Width (Note 8)	PW	50% Points, $V_O$	10	7.5	-	ns
Propagation Delay Input to Output (High-to-Low) (Figure 14)	$t_{PHL}$	$C_L = 15pF$	-	12	18	ns
Propagation Delay Input to Output (Low-to-High) (Figure 15)	$t_{PLH}$	$C_L = 15pF$	-	12	18	ns
Propagation Delay Enable to Output (High-to-High Impedance) (Figure 22)	$t_{PHZ}$	$C_L = 15pF$	-	3	7	ns
Propagation Delay Enable to Output (Low-to-High Impedance) (Figure 23)	$t_{PLZ}$	$C_L = 15pF$	-	3	7	ns
Propagation Delay Enable to Output (High Impedance-to-High) (Figure 24)	$t_{PZH}$	$C_L = 15pF$	-	3	7	ns
Propagation Delay Enable to Output (High Impedance-to-Low) (Figure 25)	$t_{PZL}$	$C_L = 15pF$	-	3	7	ns
Pulse-Width Distortion (Note 9, Figure 18)	PWD	$C_L = 15pF$	-	1	4	ns
Pulse Jitter (Note 10)	$t_J$	$C_L = 15pF$	-	100	-	ps
Propagation Delay Skew (Note 11)	$t_{PSK}$	$C_L = 15pF$	-	4	6	ns
Output Rise Time (10% to 90%) (Figure 16)	$t_R$	$C_L = 15pF$	-	2	5	ns
Output Fall Time (10% to 90%) (Figure 17)	$t_F$	$C_L = 15pF$	-	2	5	ns
Common-Mode Transient Immunity (Output Logic High or Logic Low) (Note 12)	$ CM_H ,  CM_L $	$V_{CM} = 1500V_{DC},$ $t_{TRANSIENT} = 25ns$	30	50	-	kV/ $\mu s$
Dynamic Power Consumption (Note 13, Figure 19)	-		-	140	240	$\mu A/Mbps$
<b>Magnetic Field Immunity (Note 14) (<math>V_{DD2} = 3V, 3V &lt; V_{DD1} &lt; 5.5V</math>)</b>						
Power Frequency Magnetic Immunity	$H_{PF}$	50Hz/60Hz	1000	1500	-	A/m
Pulse Magnetic Field Immunity	$H_{PM}$	$t_p = 8\mu s$	1800	2000	-	A/m
Damped Oscillatory Magnetic Field	$H_{OSC}$	0.1Hz - 1MHz	1800	2000	-	A/m
Cross-Axis Immunity Multiplier (Note 15)	$K_X$		-	2.5	-	-



Unless otherwise noted,  $V_{DD1}$   $V_{DD2} = 3V - 5.5V$ ;  $\overline{OUT}$  and  $\overline{OE}$  are open,  $V_{DD1}$  and  $V_{DD2}$  are bypassed to GND with a 47nF X7R capacitor;  $T_A = T_J = +25^\circ C$ . Limits apply across the operating temperature range,  $-55^\circ C$  to  $+125^\circ C$  unless otherwise stated. **(Continued)**

Parameter	Symbol	Test Conditions	Min ( <a href="#">Note 16</a> )	Typ	Max ( <a href="#">Note 16</a> )	Unit
<b>5V Electrical Specifications</b>						
Input Quiescent Supply Current ( <a href="#">Figure 12</a> )	$I_{DD1}$		-	10	75	$\mu A$
Output Quiescent Supply Current ( <a href="#">Figure 13</a> )	$I_{DD2}$		-	1.8	2.5	mA
Logic Input Current	$I_I$		-10	-	10	$\mu A$
Logic High Output Voltage ( <a href="#">Figure 20</a> )	$V_{OH}$	$I_O = -20\mu A, V_I = V_{IH}$	$V_{DD} - 0.1$	$V_{DD}$	-	V
		$I_O = -4mA, V_I = V_{IH}$	$0.8 \times V_{DD}$	$0.9 \times V_{DD}$	-	V
Logic Low Output Voltage ( <a href="#">Figure 21</a> )	$V_{OL}$	$I_O = 20\mu A, V_I = V_{IL}$	-	0	0.1	V
		$I_O = 4mA, V_I = V_{IL}$	-	0.5	0.8	V
<b>Switching Specifications (<math>V_{DD} = 5V</math>)</b>						
Maximum Data Rate		$C_L = 15pF$	130	150	-	Mbps
Pulse Width ( <a href="#">Note 8</a> )	PW	50% Points, $V_O$	10	7.5	-	ns
Propagation Delay Input to Output (High-to-Low) ( <a href="#">Figure 14</a> )	$t_{PHL}$	$C_L = 15pF$	-	10	16	ns
Propagation Delay Input to Output (Low-to-High) ( <a href="#">Figure 15</a> )	$t_{PLH}$	$C_L = 15pF$	-	10	16	ns
Propagation Delay Enable to Output (High-to-High Impedance) ( <a href="#">Figure 22</a> )	$t_{PHZ}$	$C_L = 15pF$	-	3	7	ns
Propagation Delay Enable to Output (Low-to-High Impedance) ( <a href="#">Figure 23</a> )	$t_{PLZ}$	$C_L = 15pF$	-	3	7	ns
Propagation Delay Enable to Output (High Impedance-to-High) ( <a href="#">Figure 24</a> )	$t_{PZH}$	$C_L = 15pF$	-	3	7	ns
Propagation Delay Enable to Output (High Impedance-to-Low) ( <a href="#">Figure 25</a> )	$t_{PZL}$	$C_L = 15pF$	-	3	7	ns
Pulse-Width Distortion ( <a href="#">Note 9</a> , <a href="#">Figure 18</a> )	PWD	$C_L = 15pF$	-	0.3	4	ns
Propagation Delay Skew ( <a href="#">Note 11</a> )	$t_{PSK}$	$C_L = 15pF$	-	4	6	ns
Output Rise Time (10% to 90%) ( <a href="#">Figure 16</a> )	$t_R$	$C_L = 15pF$	-	1	4	ns
Output Fall Time (10% to 90%) ( <a href="#">Figure 17</a> )	$t_F$	$C_L = 15pF$	-	1	4	ns
Common Mode Transient Immunity (Output Logic High or Logic Low) ( <a href="#">Note 12</a> )	$ CM_H ,  CM_L $	$V_{CM} = 1500V_{DC}$ , $t_{TRANSIENT} = 25ns$	30	50	-	kV/ $\mu s$
Dynamic Power Consumption ( <a href="#">Note 13</a> , <a href="#">Figure 19</a> )	-		-	200	340	$\mu A/Mbps$

Unless otherwise noted,  $V_{DD1}$   $V_{DD2} = 3V - 5.5V$ ; OUT and  $\overline{OE}$  are open,  $V_{DD1}$  and  $V_{DD2}$  are bypassed to GND with a 47nF X7R capacitor;  $T_A = T_J = +25^\circ C$ . Limits apply across the operating temperature range,  $-55^\circ C$  to  $+125^\circ C$  unless otherwise stated. **(Continued)**

Parameter	Symbol	Test Conditions	Min ( <a href="#">Note 16</a> )	Typ	Max ( <a href="#">Note 16</a> )	Unit
<b>Magnetic Field Immunity (<a href="#">Note 14</a>) (<math>V_{DD2} = 5V, 3V &lt; V_{DD1} &lt; 5.5V</math>)</b>						
Power Frequency Magnetic Immunity	$H_{PF}$	50Hz/60Hz	2800	3500	-	A/m
Pulse Magnetic Field Immunity	$H_{PM}$	$t_p = 8\mu s$	4000	4500	-	A/m
Damped Oscillatory Magnetic Field	$H_{OSC}$	0.1Hz - 1MHz	4000	4500	-	A/m
Cross-axis Immunity Multiplier ( <a href="#">Note 15</a> )	$K_X$		-	2.5	-	-

8. Minimum pulse width is the minimum value at which specified PWD is ensured.
9. PWD is defined as  $|t_{PHL} - t_{PLH}|$ . %PWD is equal to PWD divided by pulse width.
10. 66535-bit pseudo-random binary signal (PRBS) NRZ bit pattern with no more than five consecutive 1s or 0s; 800ps transition time.
11.  $t_{PSK}$  is the magnitude of the worst-case difference in  $t_{PHL}$  and/or  $t_{PLH}$  between devices at  $+25^\circ C$ .
12.  $CM_H$  is the maximum common-mode voltage slew rate that can be sustained while maintaining  $V_O > 0.8 V_{DD2}$ . CML is the maximum common-mode input voltage that can be sustained while maintaining  $V_O < 0.8V$ . The common-mode voltage slew rate apply to both rising and falling common-mode voltage edges.
13. Dynamic power consumption is calculated per channel and is supplied by the channel's input side power supply.
14. The relevant test and measurement methods are given in "[Electromagnetic Compatibility](#)" on [page 15](#).
15. External magnetic field immunity is improved by this factor if the field direction is "end-to-end" rather than to "pin-to-pin" (see [Figure 26 on page 15](#)).
16. Compliance to datasheet limits is assured by one or more methods: production test, characterization, and/or design.

### 3. Typical Performance Curves

T<sub>A</sub> = +25°C, unless otherwise specified.

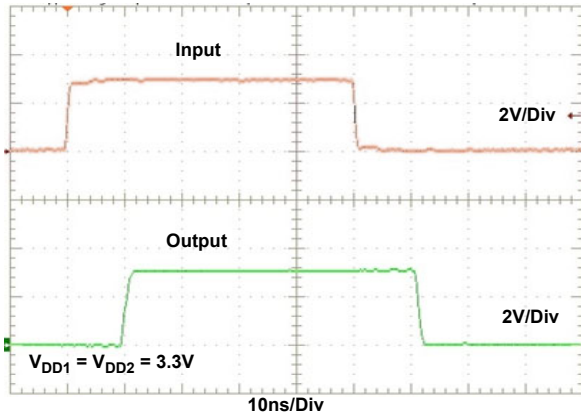


Figure 6. 10MHz Input and Output Waveforms

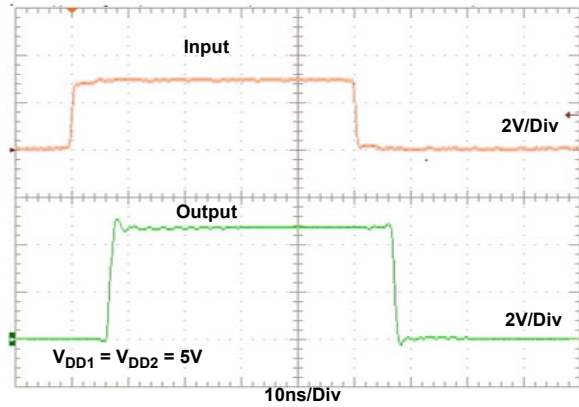


Figure 7. 10MHz Input and Output Waveforms

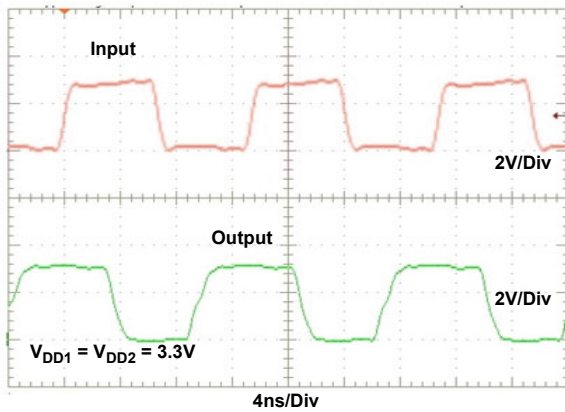


Figure 8. 75MHz Input and Output Waveforms

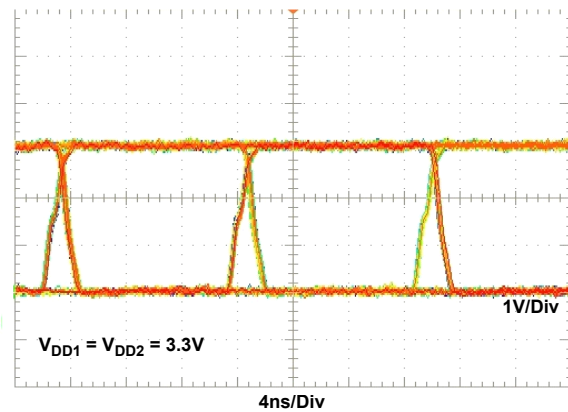


Figure 9. 75Mbps Eye Diagram

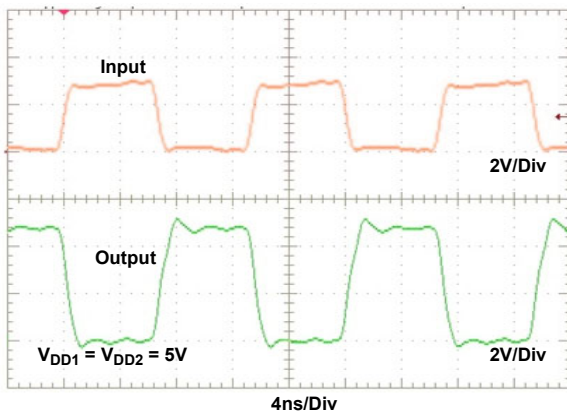


Figure 10. 75MHz Input and Output Waveforms

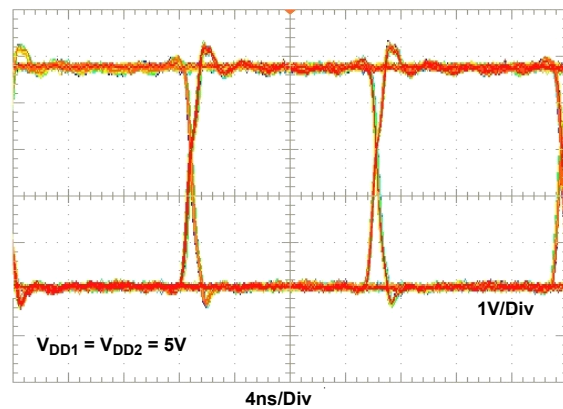


Figure 11. 75Mbps Eye Diagram

T<sub>A</sub> = +25°C, unless otherwise specified. (Continued)

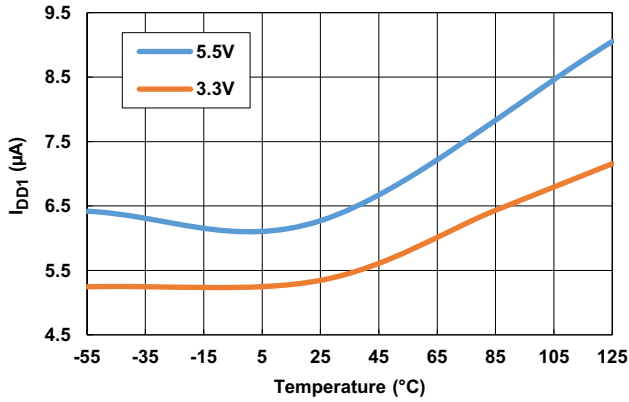


Figure 12. Input Quiescent Supply Current vs Temperature vs V<sub>DD1</sub> Voltage

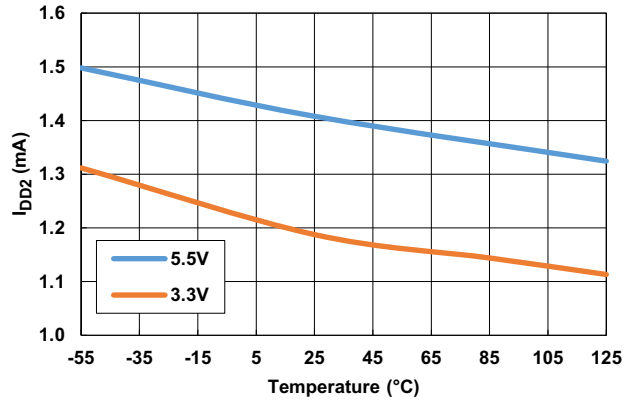


Figure 13. Output Quiescent Supply Current vs Temperature vs V<sub>DD2</sub> Voltage

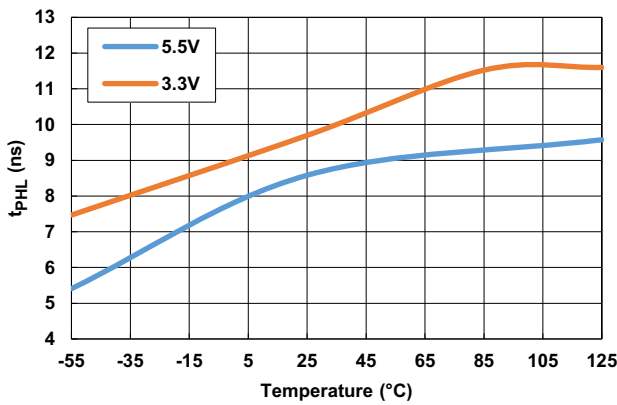


Figure 14. Propagation Delay (High-to-Low) vs Temperature vs V<sub>DD</sub> Voltage

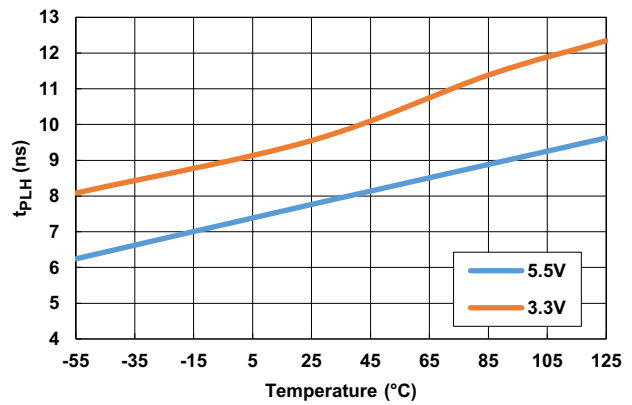


Figure 15. Propagation Delay (Low-to-High) vs Temperature vs V<sub>DD</sub> Voltage

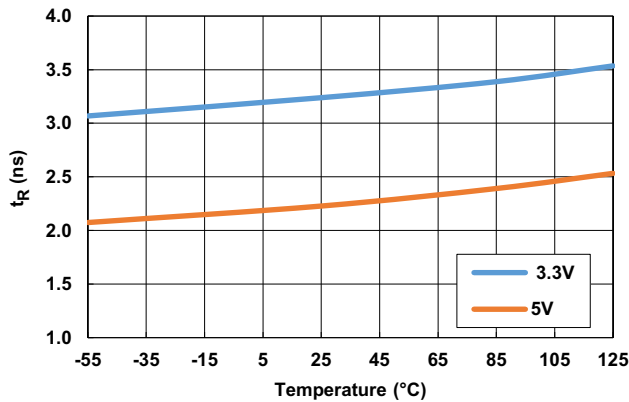


Figure 16. Output Rise Time vs Temperature vs V<sub>DD</sub> Voltage

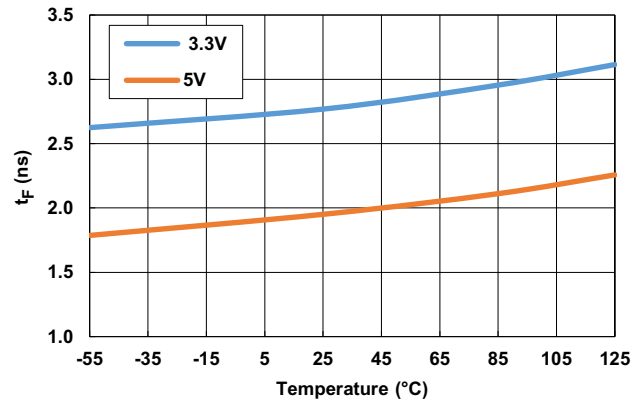


Figure 17. Output Fall Time vs Temperature vs V<sub>DD</sub> Voltage

T<sub>A</sub> = +25°C, unless otherwise specified. (Continued)

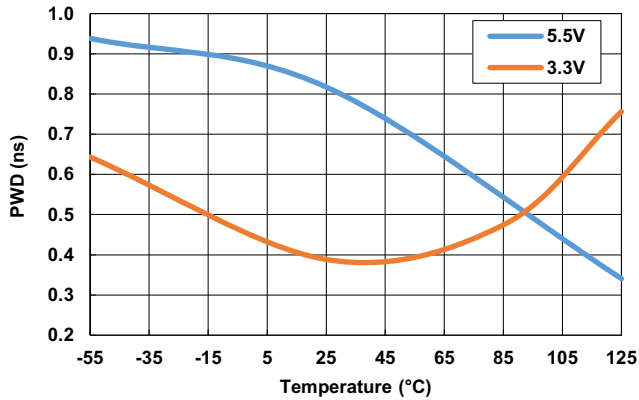


Figure 18. 5.5V Pulse-Width Distortion vs Temperature vs V<sub>DD</sub> Voltage

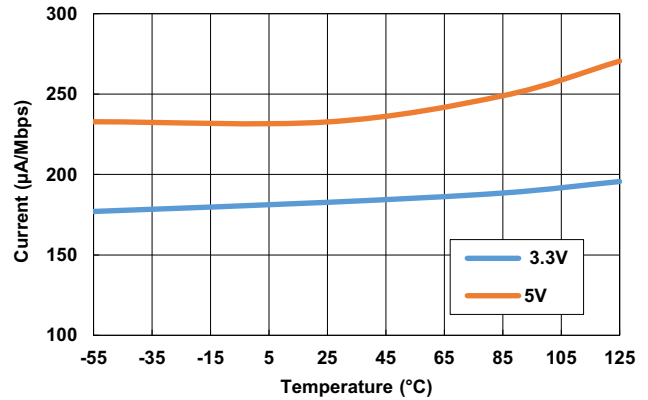


Figure 19. Dynamic Power Consumption vs Temperature

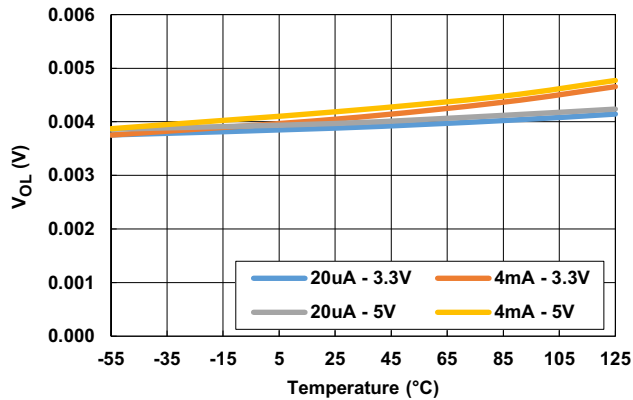


Figure 20. Logic Low Output Voltage vs Temperature

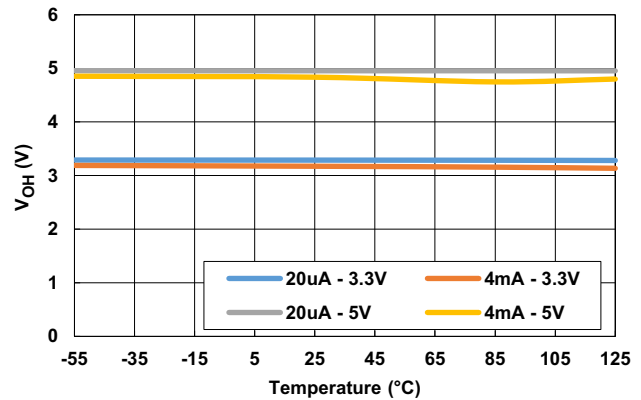


Figure 21. Logic High Output Voltage vs Temperature

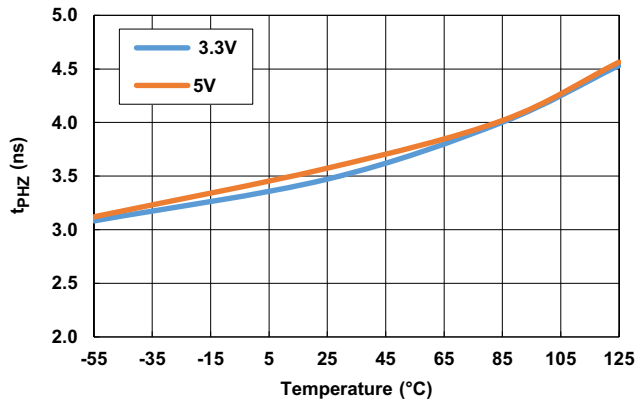


Figure 22. Propagation Delay Enable to Output (High-to-High Impedance) vs Temperature

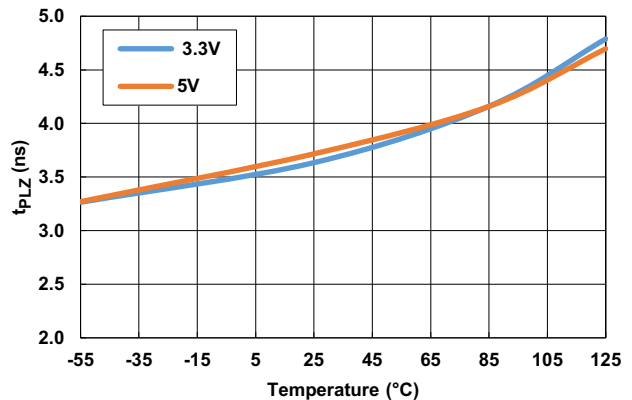


Figure 23. Propagation Delay Enable to Output (Low-to-High Impedance) vs Temperature

T<sub>A</sub> = +25°C, unless otherwise specified. (Continued)

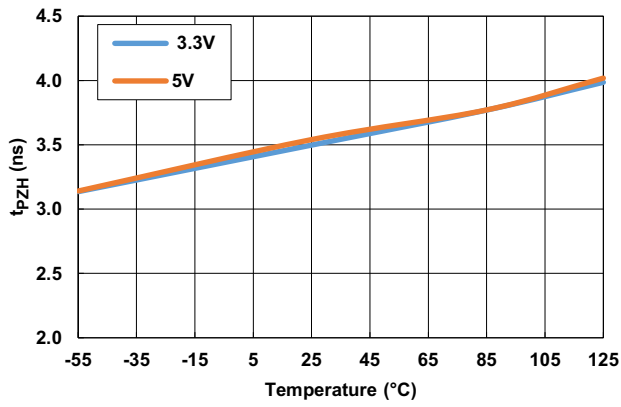


Figure 24. Propagation Delay Enable to Output (High Impedance-to-High) vs Temperature

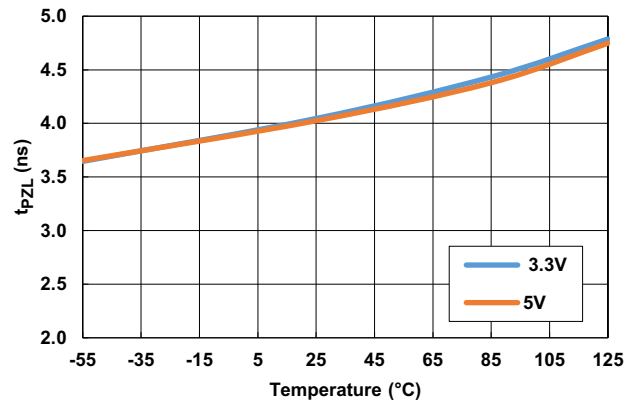


Figure 25. Propagation Delay Enable to Output (High Impedance-to-Low) vs Temperature

## 4. Device Information

### 4.1 Electrostatic Discharge Sensitivity

This product has been tested for electrostatic sensitivity to the limits stated in [“ESD Rating” on page 6](#). However, Renesas recommends that all integrated circuits are handled with appropriate care to avoid damage. Damage caused by inappropriate handling or storage could range from performance degradation to complete failure.

### 4.2 Electromagnetic Compatibility

The ISL71710M has the lowest EMC footprint of any isolation technology. Its Wheatstone bridge configuration and differential magnetic field signaling ensure excellent EMC performance against all relevant standards.

Immunity to external magnetic fields is even higher if the field direction is “end-to-end” rather than to “pin-to-pin” as shown in [Figure 26](#):

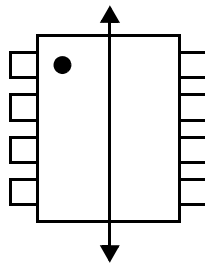


Figure 26. Cross-Axis Field Direction

### 4.3 Dynamic Power Consumption

The ISL71710M achieves its low power consumption from the way it transmits data across the isolation barrier. By detecting the edge transitions of the input logic signal and converting these to narrow current pulses, a magnetic field is created around the GMR Wheatstone bridge. Depending on the direction of the magnetic field, the bridge causes the output comparator to switch following the input logic signal. The power consumption is independent of mark-to-space ratio and solely dependent on frequency, because the current pulses are narrow, about 2.5ns. This has obvious advantages over optocouplers, which have power consumption heavily dependent on mark-to-space ratio.

### 4.4 Power Supply Decoupling

Both power supplies to these devices should be decoupled with low ESR 47nF ceramic capacitors. Ground planes for both GND1 and GND2 are highly recommended for data rates above 10Mbps. Capacitors must be located as close as possible to the VDD pins.

## 4.5 Signal Status on Start-Up and Shutdown

To minimize power dissipation, input signals are differentiated and then latched on the output side of the isolation barrier to reconstruct the signal. This could result in an indeterminate output state depending on power up, shutdown, and power loss sequencing. Therefore, consider including an initialization signal in the start-up circuit. Initialization consists of toggling the input either high then low, or low then high.

Complete the following supply sequencing steps to ensure the output starts in a known output state:

- (1) Start with the  $V_{DD1}$ ,  $V_{DD2}$ , IN, and  $\overline{OE}$  pins all at 0V.
- (2) Ramp the  $V_{DD1}$  power supply ON.
- (3) Turn the IN signal source ON.
- (4) Toggle the IN input from High to Low to put the part in the Low state or toggle it from Low to High to put the part in the High state.
- (5) Ramp the  $V_{DD2}$  power supply ON. It starts in the state set in Step 4.

## 4.6 Data Transmission Rates

The reliability of a transmission system is directly related to the accuracy and quality of the transmitted digital information. For a digital system, parameters that determine the limits of the data transmission are pulse-width distortion and propagation delay skew.

Propagation delay is the time taken for the signal to travel through the device. This is usually different when sending a low-to-high than when sending a high-to-low signal. This difference, or error, is called Pulse-Width Distortion (PWD) and is usually in nanoseconds. It may also be expressed as a percentage:

$$\bullet \text{ PWD\%} = [\text{Maximum Pulse-Width Distortion (ns)}/\text{Signal Pulse Width (ns)}] \times 100\%$$

For example, with data rates of 12.5Mbps:

$$\bullet \text{ PWD\%} = [3\text{ns}/80\text{ns}] \times 100\% = 3.75\%$$

This figure is almost three times better than any available optocoupler with the same temperature range, and two times better than any optocoupler regardless of published temperature range. The ISL71710M exceeds the 10% maximum PWD recommended by PROFIBUS, and runs to nearly 35Mbps within the 10% limit.

Propagation delay skew is the signal propagation difference between two or more channels. This becomes significant in clocked systems because it is undesirable for the clock pulse to arrive before the data has settled. Short propagation delay skew is therefore especially critical in high data rate parallel systems for establishing and maintaining accuracy and repeatability. Worst-case channel-to-channel skew in an ISL71710M isolator is only 4ns, which is ten times better than any optocoupler. ISL71710M isolators have a maximum propagation delay skew of 6ns, which is five times better than any optocoupler.



## 5. Radiation Tolerance

The ISL71710M isolator is a radiation tolerant device for commercial space applications, Low Earth Orbits (LEO) applications, high altitude avionics, launch vehicles, and other harsh environments. This device's response to Total Ionizing Dose (TID) radiation effects, and Single Event Effects (SEE) has been measured, characterized, and reported in the preceding sections. However, TID performance is not guaranteed through radiation acceptance testing, nor is the characterized SEE performance guaranteed.

### 5.1 Total Ionizing Dose (TID) Testing

Total dose testing of the ISL71710MBZ proceeded in accordance with the guidelines of MIL-STD-883 Test Method 1019. The experimental matrix consisted of 32 samples irradiated at a 5.5V bias, as shown in [Table 1](#), and 16 samples irradiated with all pins grounded (unbiased). Three control units were used. The bias configuration is shown in [Figure 34 on page 19](#).

Samples of the ISL71710MBZ were packaged in the production 8 Ld plastic NSOIC, Package Outline Drawing (POD) M8.15G. The samples were screened to datasheet limits at +125°C temperature only before irradiation.

Total dose irradiations were performed using a Hopewell Designs N40 panoramic vault-type low dose rate <sup>60</sup>Co irradiator located in the Renesas Palm Bay, Florida facility. The dose rate was < 10mrad(Si)/s. PbAl spectrum hardening filters were used to shield the test board and devices under test against low energy secondary gamma radiation.

Down points for the testing were 0krad(Si), 10krad(Si), 20krad(Si), and 30krad(Si). All electrical testing was performed outside the irradiator using production Automated Test Equipment (ATE) with data logging of all parameters at each down point. All down point electrical testing was performed at +25°C temperature.

#### 5.1.1 Results

[Table 1](#) summarizes the attributes data. Note that “Bin 1” indicates a device that passes all datasheet specification limits.

**Table 1. ISL71710M Total Dose Test Attributes Data**

Dose Rate (mrad(Si)/s)	Bias	Sample Size	Down Point	Bin 1	Rejects
8.9	<a href="#">Figure 34</a>	32	Pre-rad	32	-
			10krad(Si)	32	0
			20krad(Si)	32	0
			30krad(Si)	32	0
8.9	Grounded	16	Pre-rad	16	-
			10krad(Si)	16	0
			20krad(Si)	16	0
			30krad(Si)	16	0

The plots in [Figures 27](#) through [33](#) show data for key parameters at all down points. The plots show the average as a function of total dose for each of the irradiation conditions; we chose to use the average because of the relatively large sample sizes. All parts showed excellent stability over irradiation.

[Table 2 on page 19](#) shows the average of some of these key parameters with respect to total dose in tabular form.

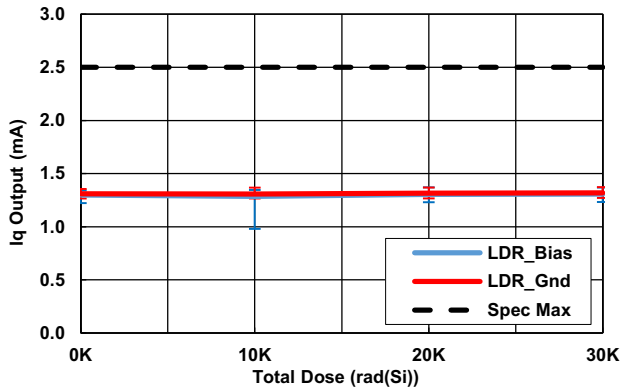


Figure 27. 5.5V Output Quiescent Supply Current vs TID

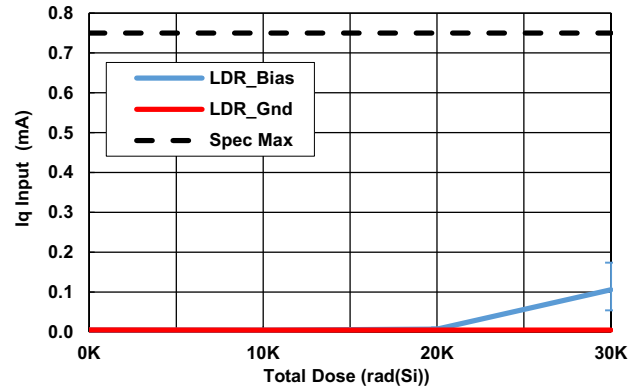


Figure 28. 5.5V Input Quiescent Supply Current vs TID

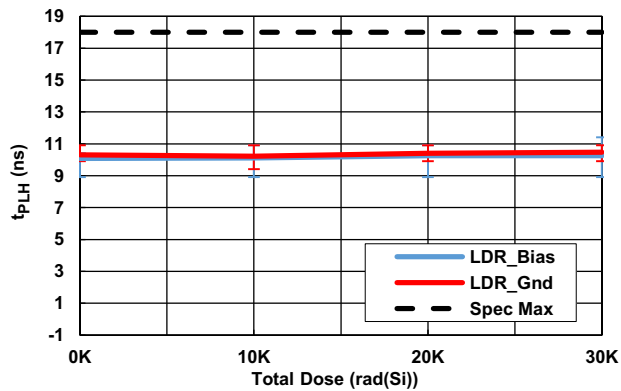


Figure 29. 5.5V Propagation Delay (Low-to-High) vs TID

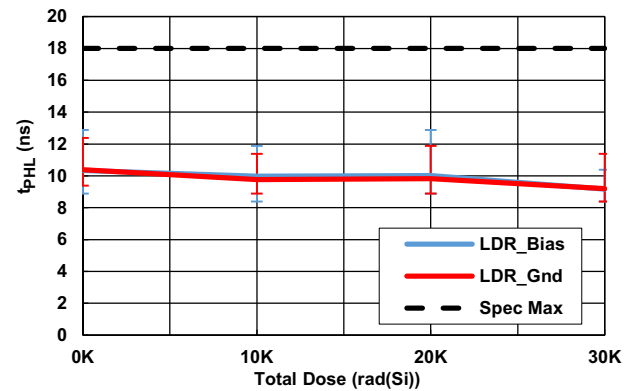


Figure 30. 5.5V Propagation Delay (High-to-Low) vs TID

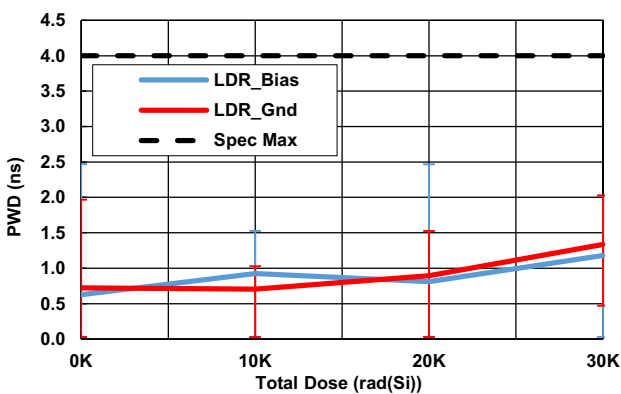


Figure 31. 5.5V Pulse-Width Distortion vs TID

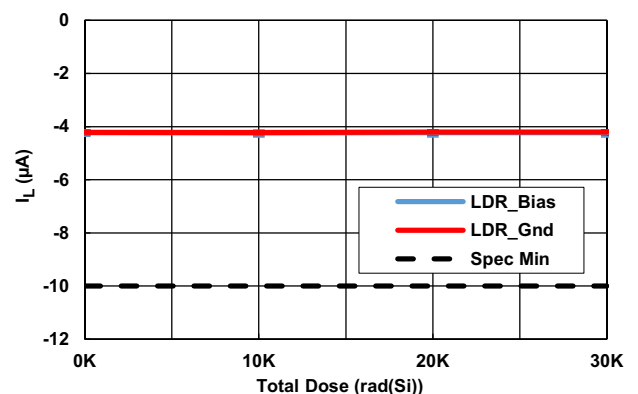


Figure 32. 5.5V Logic Input Current - Low vs TID

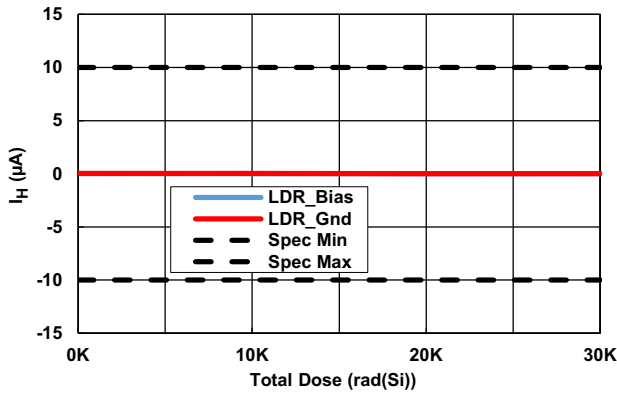


Figure 33. 5.5V Logic Input Current - High vs TID

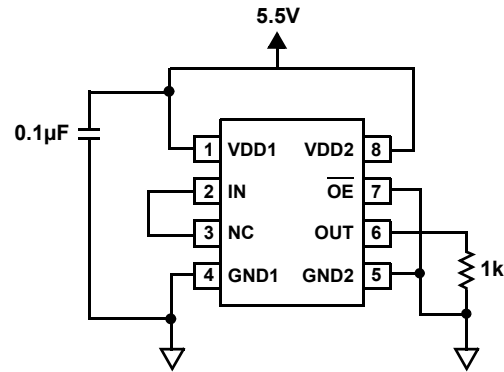


Figure 34. ISL71710M TID Biased Configuration

### 5.1.2 Conclusion

ATE characterization testing showed no rejects to the datasheet limits at all down points. Variables data for selected parameters is presented in [Figures 27](#) through [33](#). No differences between biased and unbiased irradiation were noted, and the part is not considered bias sensitive.

Table 2. ISL71710M Response of Selected Key Parameters vs TID

Parameter	Bias	0krad(Si)	10krad(Si)	20krad(Si)	30krad(Si)	Unit
5.5V Output Quiescent Supply Current	Biased	1.296636	1.285285	1.304571	1.306952	mA
	Grounded	1.308415	1.307549	1.315661	1.318426	
5.5V Input Quiescent Supply Current	Biased	0.004677	0.004395	0.007078	0.0105677	mA
	Grounded	0.004816	0.004409	0.004658	0.004711	
Propagation Delay Input to Output (Low-to-High)	Biased	10.0852	10.11629	10.2568	10.2568	ns
	Grounded	10.3192	10.2256	10.4128	10.4752	
Propagation Delay Input to Output (High-to-Low)	Biased	10.3372	9.978398	10.0252	9.167198	ns
	Grounded	10.384	9.75997	9.822398	9.198398	
Pulse-Width Distortion	Biased	0.62595	0.925801	0.808201	1.179601	ns
	Grounded	0.72151	0.704401	0.895202	1.335601	
5.5V Logic Input Current - Low	Biased	-4.23145	-4.23827	-4.23332	-4.23366	μA
	Grounded	-4.21932	-4.22309	-4.20641	-4.20761	
5.5V Logic Input Current - High	Biased	0.028644	-0.00306	0.005691	0.013971	μA
	Grounded	0.022178	0.064251	0.066199	0.078263	

## 5.2 Single Event Effects Testing

The intense heavy ion environment encountered in space applications can cause a variety of Single Event Effects (SEE). SEE can lead to system-level performance issues including disruption, degradation, and destruction. For predictable and reliable space system operation, individual electronic components should be characterized to determine their SEE response. The following is a summary of the SEE testing of the ISL71710M.

### 5.2.1 SEE Test Facility

Testing was performed at the Texas A&M University (TAMU) Cyclotron Institute heavy ion facility. This facility is coupled to a K500 superconducting cyclotron that is capable of generating a wide range of test particles with the various energy, flux, and fluence level needed for advanced radiation testing.

### 5.2.2 Scope of the ISL71710M SEE Testing

The ISL71710M is a single channel, active input, digital isolator in an 8 Ld NSOIC package. The testing described here was undertaken to do a preliminary evaluation of the ISL71710M for use in space applications. Both destructive Single Event Dielectric Rupture (SEDR) of the barrier isolation and non-destructive Single Event Transients (SET) were tested. In addition, destructive Single Event Burnout (SEB) and Single Event Latch-Up (SEL) of the CMOS circuitry were tested.

### 5.2.3 Testing Set Up

The plastic packages were opened chemically to expose the die surface so that SEE testing could be accomplished. Care had to be observed to ensure that the plastic was opened but that the isolation barrier was not compromised. This took a bit of trial and error, but a process to open the parts was found. When opened, the barrier isolation was degraded by free air breakdown to about  $750V_{DC}$ .

Four parts were mounted close together on boards for simultaneous irradiation. For the barrier SEDR testing the pins on either side of the barrier were all shorted together (1-4 on one side and 5-8 on the other side) so that a high voltage could be applied across the isolation barrier. For SEB and SEL testing the parts were powered with various  $V_{DD1}$  and  $V_{DD2}$  voltages while irradiating. For both forms of destructive SEE the parts were heated to  $125^{\circ}C$ . For the SET testing the parts were at  $25^{\circ}C$  and biased with either 3.0V or 5.5V supplies with static inputs of both states tested.

### 5.2.4 Isolation Barrier SEDR Testing

Because the ISL71710M digital isolator has the same barrier and isolation construction as the ISL71610M digital isolator, the ISL71610M SEDR test results qualify by extension the ISL71710M part and it is rated to  $500V_{DC}$  at  $43MeV \cdot cm^2/mg$  SEDR. The following is the summary of the ISL71610M SEDR testing.

The ISL71610M barrier isolation SEDR was tested by biasing the four parts with 200V to 500V in 50V increments while irradiating with normal incidence silver (Ag) for a surface LET of  $43MeV \cdot cm^2/mg$  to a fluence of  $1 \times 10^7$  ion/cm<sup>2</sup> at each of the seven voltages. The four parts were heated to  $+125^{\circ}C$  for the testing. The leakage current across the barrier of each part was measured before and after each irradiation to assess the change. The leakages all measured below 75nA both before and after irradiation. No leakage changed by more than 50% as a result of the irradiation being observed. The isolation barrier is rated to 500V over the entire temperature and voltage ranges.

### 5.2.5 SEB and SEL Testing

For SEB and SEL testing, the isolation barrier voltage was set to 0V and the four parts were powered with supply voltages for both  $V_{DD1}$  and  $V_{DD2}$  of 5.5V, 6.0V, 6.5V, and 7.0V. The parts were heated to  $+125^{\circ}C$  during the testing. Before and after each irradiation to  $1 \times 10^7$  ion/cm<sup>2</sup> with normal incidence silver (Ag) for a surface LET of  $43MeV \cdot cm^2/mg$  the supply currents and the output voltages were measured at  $V_{DD}$  of 5.0V at both input states to exercise both output conditions. During irradiation the input had a 500kHz signal applied (0V-5V). None of the monitored values changed significantly (more than 1%) during the irradiations.

### 5.2.6 SET Testing

The ISL71710M was tested for qualification of Single Event Transients (SET) on October 16, 2018. The testing was done at Texas A&M University's Cyclotron Institute.

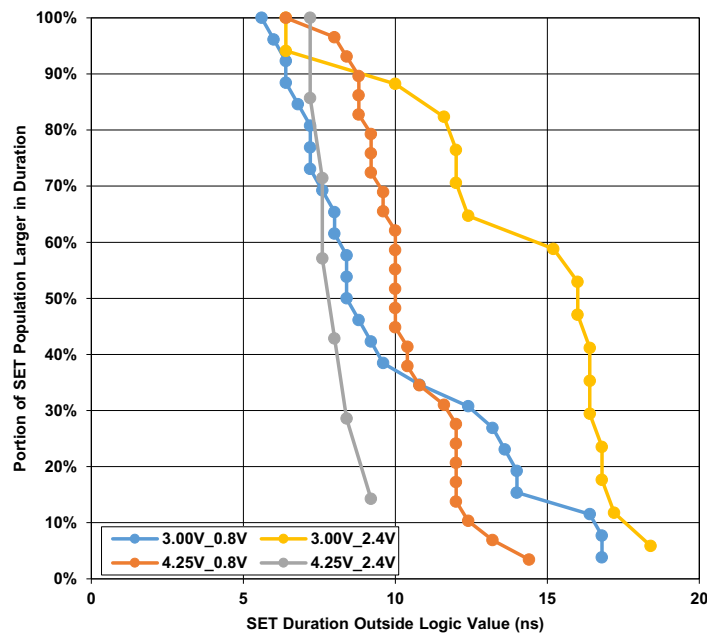
For SET testing the ISL71710 parts were tested two at a time (all within the beam diameter). The parts were tested in static operation for unambiguous detection of the SET. Each output was buffered and monitored by an oscilloscope that stored a trace whenever triggered. The triggers were set according to the nominal output. When the nominal output was a logic low (GND), the trigger was set for any transition through 0.8V. When the nominal output was logic high ( $V_{DD2}$ ) the trigger was set for any transition through 2.0V. The supply voltages,  $V_{DD1}$  and  $V_{DD2}$ , were set together and to either 3.00V or 4.25V. These represent the lowest voltages anticipated for supplies of a 3.3V nominal and for a 5.0V nominal (including use with the ISL70040SEH low side GaN

FET driver). The input voltage was set to either 0.8V or 2.4V to provide the marginal logic voltages. The summary of the SET counts appears in [Table 3](#).

**Table 3. SET Count Summary for the Testing of ISL71710M**

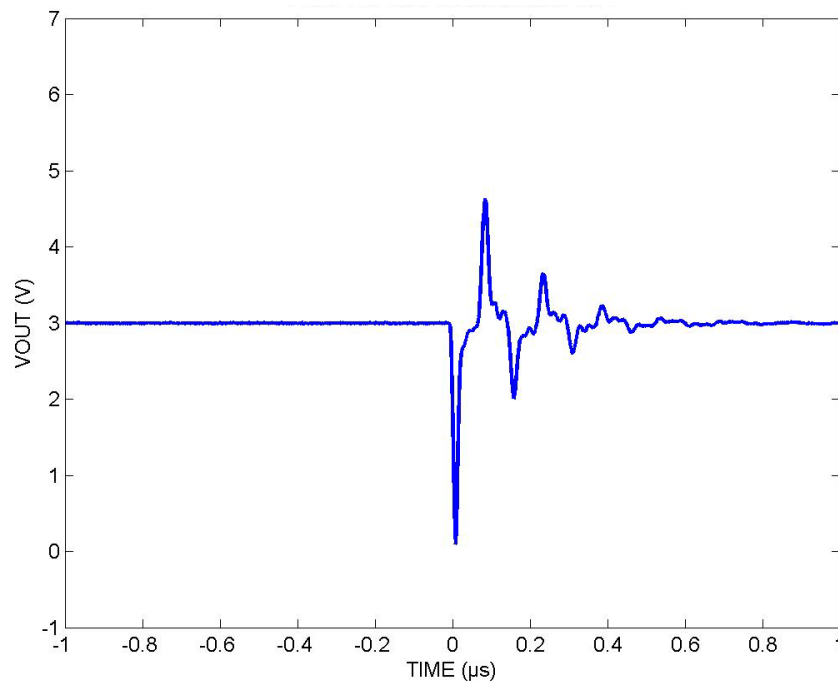
LET (MeV•cm <sup>2</sup> /mg)	V <sub>IN</sub> (V)	Trigger (V)	V <sub>DD1</sub> and V <sub>DD2</sub> (V)	SET Counts in 1x10 <sup>7</sup> ions/cm <sup>2</sup>				Totals
				DUT1	DUT2	DUT3	DUT4	
43	0.8	0.8	3.00	9	4	11	2	26
			4.25	9	7	3	10	29
	2.4	2.0	3.00	0	0	0	7	7
			3.00	0	2	2	13	17
				<b>DUT5</b>	<b>DUT6</b>	<b>DUT7</b>	<b>DUT8</b>	
20	0.8	0.8	3.00	8	7	1	3	19
			4.25	6	1	4	1	12
	2.4	2.0	3.00	0	0	0	4	4
			3.00	0	4	7	8	19
8.5	0.8	0.8	3.00	8	2	4	2	16
			4.25	3	0	0	0	3
	2.4	2.0	3.00	0	0	0	0	0
			3.00	0	0	0	0	0

The captured SET traces for the case of 43MeV•cm<sup>2</sup>/mg were post processed with a MATLAB® routine to find the duration of the triggering SET. The duration was calculated as the initial transient time beyond the trigger level, either 0.8V or 2.0V depending on the nominal output. These results were plotted in a form similar to a probability plot and are presented in [Figure 35](#). The longest SET observed was 18.4ns, for the case of V<sub>DD</sub> at 3.00V and a high output. Durations were the output SET time below 2.0V for nominal high output, and the duration above 0.8V for a nominal low output. The legend identifies the V<sub>DD</sub> setting and the input voltage setting.



**Figure 35. Plot of Cumulative SET Population Portion that is Above an Indicated SET Duration at LET 43MeV·cm<sup>2</sup>/mg**

The longest SET transient captured for the ISL71710M at 43MeV·cm<sup>2</sup>/mg is presented in [Figure 36](#). The twenty foot coaxial cable used to connect the oscilloscope to the buffer on the DUT induced considerable ringing that appears in [Figure 36](#). No filtering was applied at the receiving end so as not to spread the initial events. The initial event in the figure is the sharp spike down that persists below 2.0V for 18.4ns. The smallest duration events barely reached the 2.0V or 0.8 trigger levels and persisted for as little as 5.6ns. No significant difference was seen for either choice of V<sub>DD</sub> (3.00V or 4.25V) or for the state of the output.



**Figure 36. The SET of Extracted Duration of 18.4ns Below 2.0V in the First Impulse.**

### 5.2.7 Summary

The ISL71710M common barrier isolation was immune to SEDR with normal incidence Ag for a LET of 43MeV•cm<sup>2</sup>/mg to a fluence of 1x10<sup>7</sup>ion/cm<sup>2</sup> at an isolation voltage of 500V.

The ISL71710M circuitry was immune to SEL and SEB with normal incidence Ag for an LET of 43MeV•cm<sup>2</sup>/mg to a fluence of 1x10<sup>7</sup> ion/cm<sup>2</sup> at a supply voltage of 7.0V.

The ISL71710M SET registered a maximum cross section of 130μm<sup>2</sup> at 43MeV•cm<sup>2</sup>/mg. This occurred for a V<sub>DD</sub> of 3.0V with a nominally high output and had a maximum duration of 18.4ns. At 8.5MeV•cm<sup>2</sup>/mg the SET registered a maximum cross section of 80μm<sup>2</sup> with a maximum duration of 60ns. This is an unusual event in its length and magnitude. As can be seen in [Figure 35 on page 22](#) the bulk of the SET even at 43MeV•cm<sup>2</sup>/mg were well below 20ns in duration.

## 6. Revision History

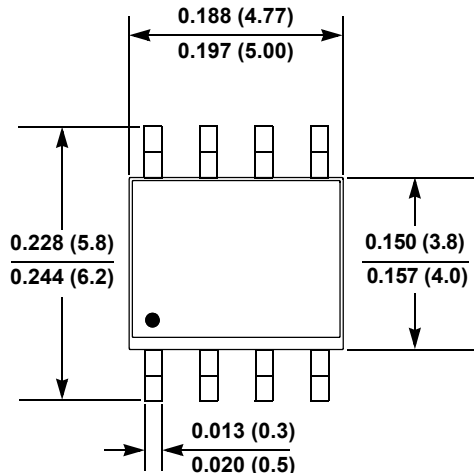
Revision	Date	Description
0.00	Nov 9, 2018	Initial release



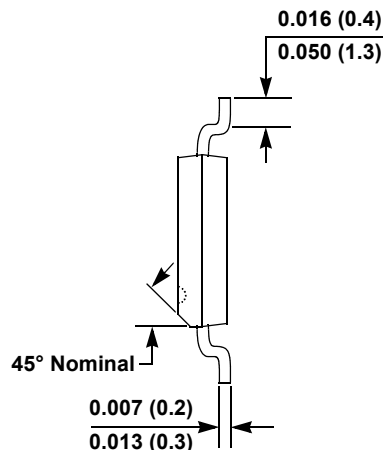
## 7. Package Outline Drawing

For the most recent package outline drawing, see [M8.15G](#).

M8.15G  
 8 Lead Narrow Body Small Outline Plastic Package  
 Rev 2, 10/18



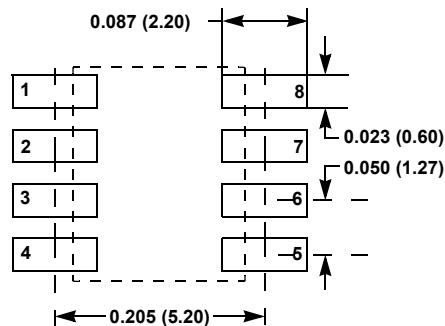
**Top View**



**Side View**



**End View**



**Typical Recommended Land Pattern**

- Notes:
1. Dimensions in inches (mm); scale = approximately 5X.
  2. Pin spacing is a BASIC dimension; tolerances do not accumulate.

## Notice

1. Descriptions of circuits, software and other related information in this document are provided only to illustrate the operation of semiconductor products and application examples. You are fully responsible for the incorporation or any other use of the circuits, software, and information in the design of your product or system. Renesas Electronics disclaims any and all liability for any losses and damages incurred by you or third parties arising from the use of these circuits, software, or information.
2. Renesas Electronics hereby expressly disclaims any warranties against and liability for infringement or any other claims involving patents, copyrights, or other intellectual property rights of third parties, by or arising from the use of Renesas Electronics products or technical information described in this document, including but not limited to, the product data, drawings, charts, programs, algorithms, and application examples.
3. No license, express, implied or otherwise, is granted hereby under any patents, copyrights or other intellectual property rights of Renesas Electronics or others.
4. You shall not alter, modify, copy, or reverse engineer any Renesas Electronics product, whether in whole or in part. Renesas Electronics disclaims any and all liability for any losses or damages incurred by you or third parties arising from such alteration, modification, copying or reverse engineering.
5. Renesas Electronics products are classified according to the following two quality grades: "Standard" and "High Quality". The intended applications for each Renesas Electronics product depends on the product's quality grade, as indicated below.  
"Standard": Computers; office equipment; communications equipment; test and measurement equipment; audio and visual equipment; home electronic appliances; machine tools; personal electronic equipment; industrial robots; etc.  
"High Quality": Transportation equipment (automobiles, trains, ships, etc.); traffic control (traffic lights); large-scale communication equipment; key financial terminal systems; safety control equipment; etc.  
Unless expressly designated as a high reliability product or a product for harsh environments in a Renesas Electronics data sheet or other Renesas Electronics document, Renesas Electronics products are not intended or authorized for use in products or systems that may pose a direct threat to human life or bodily injury (artificial life support devices or systems; surgical implantations; etc.), or may cause serious property damage (space system; undersea repeaters; nuclear power control systems; aircraft control systems; key plant systems; military equipment; etc.). Renesas Electronics disclaims any and all liability for any damages or losses incurred by you or any third parties arising from the use of any Renesas Electronics product that is inconsistent with any Renesas Electronics data sheet, user's manual or other Renesas Electronics document.
6. When using Renesas Electronics products, refer to the latest product information (data sheets, user's manuals, application notes, "General Notes for Handling and Using Semiconductor Devices" in the reliability handbook, etc.), and ensure that usage conditions are within the ranges specified by Renesas Electronics with respect to maximum ratings, operating power supply voltage range, heat dissipation characteristics, installation, etc. Renesas Electronics disclaims any and all liability for any malfunctions, failure or accident arising out of the use of Renesas Electronics products outside of such specified ranges.
7. Although Renesas Electronics endeavors to improve the quality and reliability of Renesas Electronics products, semiconductor products have specific characteristics, such as the occurrence of failure at a certain rate and malfunctions under certain use conditions. Unless designated as a high reliability product or a product for harsh environments in a Renesas Electronics data sheet or other Renesas Electronics document, Renesas Electronics products are not subject to radiation resistance design. You are responsible for implementing safety measures to guard against the possibility of bodily injury, injury or damage caused by fire, and/or danger to the public in the event of a failure or malfunction of Renesas Electronics products, such as safety design for hardware and software, including but not limited to redundancy, fire control and malfunction prevention, appropriate treatment for aging degradation or any other appropriate measures. Because the evaluation of microcomputer software alone is very difficult and impractical, you are responsible for evaluating the safety of the final products or systems manufactured by you.
8. Please contact a Renesas Electronics sales office for details as to environmental matters such as the environmental compatibility of each Renesas Electronics product. You are responsible for carefully and sufficiently investigating applicable laws and regulations that regulate the inclusion or use of controlled substances, including without limitation, the EU RoHS Directive, and using Renesas Electronics products in compliance with all these applicable laws and regulations. Renesas Electronics disclaims any and all liability for damages or losses occurring as a result of your noncompliance with applicable laws and regulations.
9. Renesas Electronics products and technologies shall not be used for or incorporated into any products or systems whose manufacture, use, or sale is prohibited under any applicable domestic or foreign laws or regulations. You shall comply with any applicable export control laws and regulations promulgated and administered by the governments of any countries asserting jurisdiction over the parties or transactions.
10. It is the responsibility of the buyer or distributor of Renesas Electronics products, or any other party who distributes, disposes of, or otherwise sells or transfers the product to a third party, to notify such third party in advance of the contents and conditions set forth in this document.
11. This document shall not be reprinted, reproduced or duplicated in any form, in whole or in part, without prior written consent of Renesas Electronics.
12. Please contact a Renesas Electronics sales office if you have any questions regarding the information contained in this document or Renesas Electronics products.

(Note 1) "Renesas Electronics" as used in this document means Renesas Electronics Corporation and also includes its directly or indirectly controlled subsidiaries.

(Note 2) "Renesas Electronics product(s)" means any product developed or manufactured by or for Renesas Electronics.

(Rev.4.0-1 November 2017)



### SALES OFFICES

Renesas Electronics Corporation

<http://www.renesas.com>

Refer to "<http://www.renesas.com/>" for the latest and detailed information.

#### Renesas Electronics Corporation

TOYOSU FORESIA, 3-2-24 Toyosu, Koto-ku, Tokyo 135-0061, Japan

#### Renesas Electronics America Inc.

1001 Murphy Ranch Road, Milpitas, CA 95035, U.S.A.  
Tel: +1-408-432-8888, Fax: +1-408-434-5351

#### Renesas Electronics Canada Limited

9251 Yonge Street, Suite 8309 Richmond Hill, Ontario Canada L4C 9T3  
Tel: +1-905-237-2004

#### Renesas Electronics Europe Limited

Dukes Meadow, Millboard Road, Bourne End, Buckinghamshire, SL8 5FH, U.K  
Tel: +44-1628-651-700

#### Renesas Electronics Europe GmbH

Arcadiastrasse 10, 40472 Düsseldorf, Germany  
Tel: +49-211-6503-0, Fax: +49-211-6503-1327

#### Renesas Electronics (China) Co., Ltd.

Room 1709 Quantum Plaza, No.27 ZhichunLu, Haidian District, Beijing, 100191 P. R. China  
Tel: +86-10-8235-1155, Fax: +86-10-8235-7679

#### Renesas Electronics (Shanghai) Co., Ltd.

Unit 301, Tower A, Central Towers, 555 Langao Road, Putuo District, Shanghai, 200333 P. R. China  
Tel: +86-21-2226-0888, Fax: +86-21-2226-0999

#### Renesas Electronics Hong Kong Limited

Unit 1601-1611, 16/F., Tower 2, Grand Century Place, 193 Prince Edward Road West, Mongkok, Kowloon, Hong Kong  
Tel: +852-2265-6688, Fax: +852 2886-9022

#### Renesas Electronics Taiwan Co., Ltd.

13F, No. 363, Fu Shing North Road, Taipei 10543, Taiwan  
Tel: +886-2-8175-9600, Fax: +886 2-8175-9670

#### Renesas Electronics Singapore Pte. Ltd.

80 Bendemeer Road, Unit #06-02 Hyflux Innovation Centre, Singapore 339949  
Tel: +65-6213-0200, Fax: +65-6213-0300

#### Renesas Electronics Malaysia Sdn.Bhd.

Unit 1207, Block B, Menara Amcorp, Amcorp Trade Centre, No. 18, Jln Persiaran Barat, 46050 Petaling Jaya, Selangor Darul Ehsan, Malaysia  
Tel: +60-3-7955-9390, Fax: +60-3-7955-9510

#### Renesas Electronics India Pvt. Ltd.

No.777C, 100 Feet Road, HAL 2nd Stage, Indiranagar, Bangalore 560 038, India  
Tel: +91-80-67208700, Fax: +91-80-67208777

#### Renesas Electronics Korea Co., Ltd.

17F, KAMCO Yangjae Tower, 262, Gangnam-daero, Gangnam-gu, Seoul, 06265 Korea  
Tel: +82-2-558-3737, Fax: +82-2-558-5338