

RS-422 vs RS-485

Similarities and Key Differences

AN1989
Rev.0.00
Dec 7, 2017

Abstract

The RS-422 and RS-485 standards specify the physical characteristics of driver and receiver components for differential data transmission interfaces in noisy environments. Although at a first glance the standards appear to be similar, subtle differences between them allow RS-485 bus components to be used in RS-422 applications, but do not allow RS-422 bus components to be used in RS-485 applications.

This application note describes some key parameters and bus topologies each standard supports and explains the reasons why RS-422 components should not be used in RS-485 networks.

Contents

- 1. **RS-422 Key Parameters and Topology** 2
- 2. **RS-485 Key Parameters and Topology** 3
- 3. **Why RS-422 Components Fail in Multipoint Applications** 5
 - 3.1 Common-Mode Range 5
 - 3.2 Driver Contention 6
 - 3.3 Driver Current 6
- 4. **Conclusion** 7
- 5. **Revision History** 8

List of Figures

- Figure 1. RS-422 Multidrop Bus: One Driver and up to 10 Receivers 2
- Figure 2. RS-422 Receiver Input Resistance 2
- Figure 3. RS-422 Driver Output Voltage 2
- Figure 4. RS-485 Multipoint Bus: Multiple Drivers and Multiple Receivers 3
- Figure 5. RS-422 Transceiver Input Resistance 3
- Figure 6. 32ULs Equivalents 3
- Figure 7. Differential Load Test Circuit 4
- Figure 8. Common-Mode Load Test Circuit 4
- Figure 9. RS-422 Driver Output Structure with Forward-Biased Substrate Diode 5
- Figure 10. RS-485 Driver Output Structure 6

1. RS-422 Key Parameters and Topology

RS-422 is a unidirectional, multidrop network, allowing for the use of a single driver with an output signal that can be *dropped* at multiple (up to 10) receiver nodes (see [Figure 1](#)).

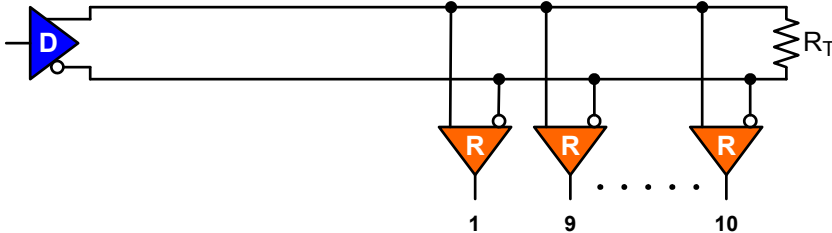


Figure 1. RS-422 Multidrop Bus: One Driver and up to 10 Receivers

The receiver common-mode input resistance, measured between each bus terminal and ground, is 4kΩ ([Figure 2](#)).

Up to 10 receivers can be connected to an RS-422 link. Because data traffic is unidirectional, only one termination resistor is required to eliminate signal reflections on the bus. Its value should match the characteristic cable impedance, typically in the range of 100Ω to 130Ω.

Note: if you want a bidirectional interface solely based on RS-422 components, add a second, separate data link in the opposite direction.

Although an RS-422 driver must be able to drive the common-mode load of 10 receivers, paralleled by a differential termination resistor, the standard specifies only a driver’s output drive capability in the form of a minimum V_{OD} of ±2V across a differential load of 100Ω ([Figure 3](#)). The need for overcoming ground potential differences (GPDs) between driver and receivers is not explicitly mentioned.

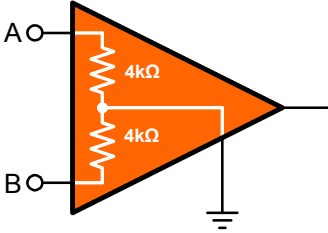


Figure 2. RS-422 Receiver Input Resistance

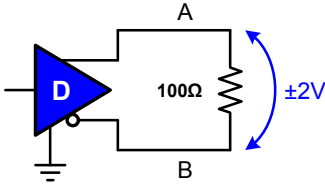


Figure 3. RS-422 Driver Output Voltage

2. RS-485 Key Parameters and Topology

RS-485 is a bidirectional multipoint interface, which allows for multiple drivers to be connected to the same bus (Figure 4). To avoid bus contention, bus access is controlled with driver enable pins. Only one driver can access the bus at a time.

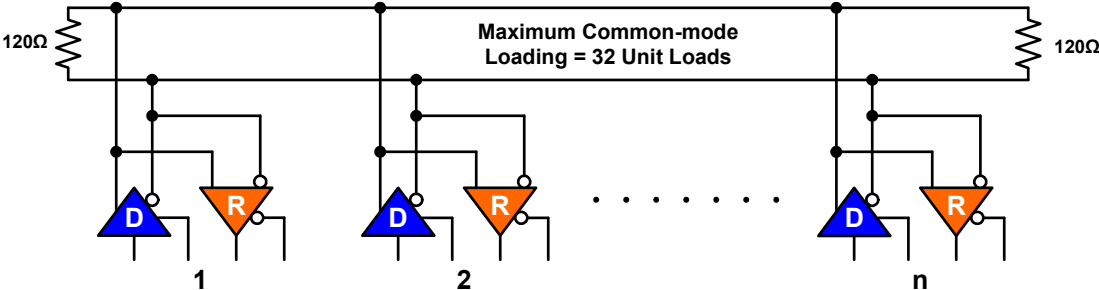


Figure 4. RS-485 Multipoint Bus: Multiple Drivers and Multiple Receivers

Unlike RS-422, RS-485 distinguishes between differential and common-mode bus loading. The maximum differential load is a 54Ω resistor across which a driver must produce a differential output voltage of ±1.5V minimum (Figure 7 on page 4). The maximum common-mode loading is specified with 32 unit loads (ULs) or 375Ω (Figure 8 on page 4). This resistor value is based on the relation of a single unit load (1UL) being equivalent to an input resistance of 12kΩ between each bus terminal and ground.

A unit load is defined as a 1mA current into a transceiver with disabled driver, or a receiver at a DC input voltage of 12V, measured at the bus terminals (A, B) with respect to ground.

To prevent a driver from being overloaded by exceeding the 32 ULs limit, transceivers are given a unit load rating (Figure 5). Legacy transceivers usually have a rating of 1UL, which is mainly due to their older process technologies. Modern transceivers, commonly based on CMOS and Bi-CMOS processes have higher input impedances and thus lower or fractional UL-ratings, such as 1/2UL, 1/4UL, and 1/8UL. These correspond to input resistances of 24kΩ, 48kΩ, and 96kΩ, respectively. The specified 32ULs therefore correspond to a different number of transceivers, depending on their UL-ratings (Figure 6).

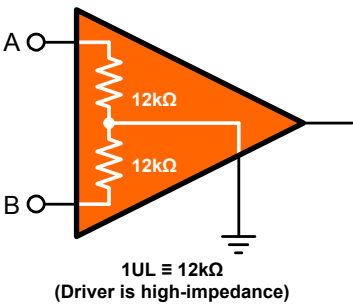


Figure 5. RS-422 Transceiver Input Resistance

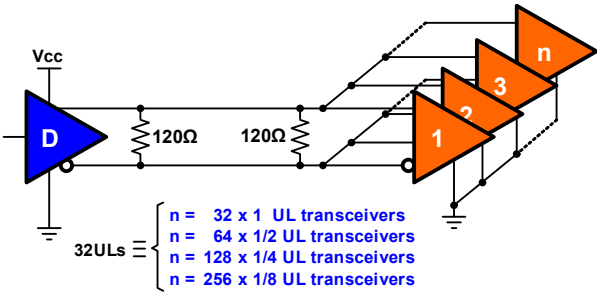


Figure 6. 32ULs Equivalents

A driver’s total common-mode drive capability also requires it to overcome large common-mode voltages in the range of -7V to +12V and drive two termination resistors, one at each cable end, because the bus signal propagates bidirectionally. The value of these resistors should match the characteristic cable impedance of $Z_0 = 120\Omega$ to eliminate signal reflections.

RS-422 vs RS-485

Figure 8 shows the driver output test circuit under common-mode load conditions, in which the driver must produce a minimum V_{OD} of $\pm 1.5V$. Here the 60Ω resistor presents the parallel circuit of the termination resistors and the 375Ω resistors represent the total common-mode load of 32ULs.

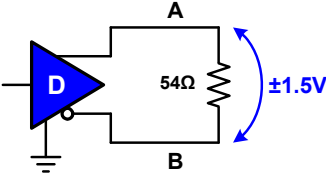


Figure 7. Differential Load Test Circuit

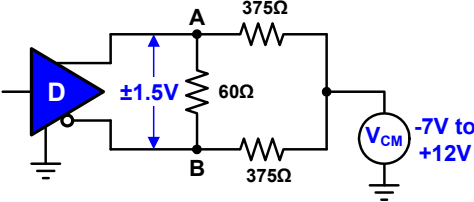


Figure 8. Common-Mode Load Test Circuit

3. Why RS-422 Components Fail in Multipoint Applications

There are three reasons not to use RS-422 drivers in multipoint applications:

- Limited common-mode range due to driver output stage design. For more information, refer to [Common-Mode Range](#).
- Device-damaging bus currents due to bus contention. For more information, refer to [Driver Contention](#).
- High operating drive currents due to parallel termination and high receiver count. For more information, refer to [Driver Current](#).

3.1 Common-Mode Range

[Figure 9](#) shows the typical bipolar output stage of an RS-422 driver. Associated with the classical totem pole structure is the parasitic diode formed between the EPI layer and the substrate. This diode limits the negative common mode range of the active driver's output by clamping the line voltage to a diode drop below driver ground.

Assume a typical multipoint application in which one driver (D1) is disabled and the other driver (D2) is active. If there is a ground potential difference (GPD), such that the ground potential of D1 is 2V higher than that of D2, and D2's $V_{OL} = 0.5V$, the parasitic diode in D1 is forward biased by $-1.5V$. In this case, the line at D1 is clamped to $-0.7V$ instead of the driven level and data flow is not guaranteed.

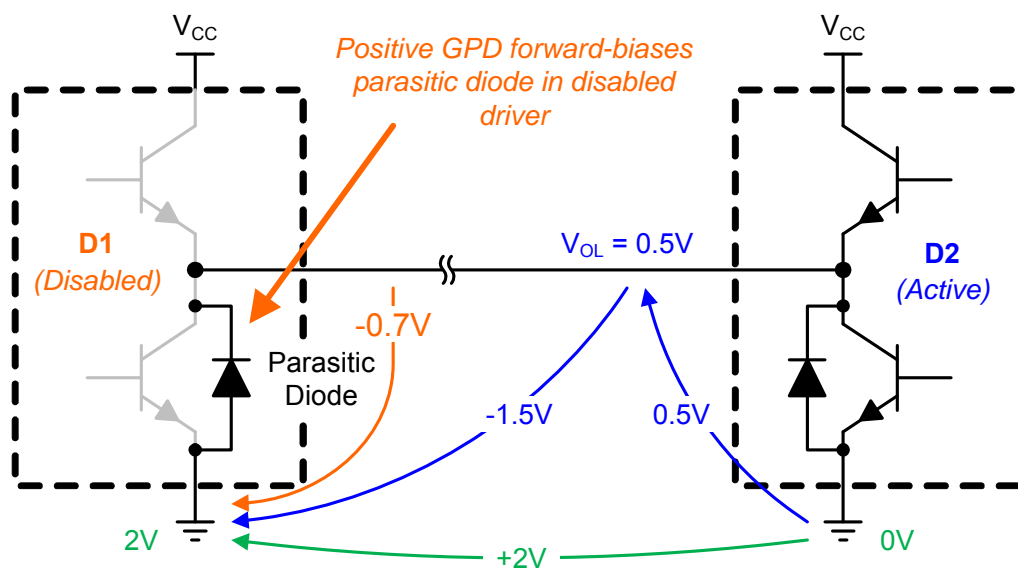


Figure 9. RS-422 Driver Output Structure with Forward-Biased Substrate Diode

RS-485 drivers include Schottky diodes in their output structures. These diodes isolate the EPI/SUB diodes from the output terminals and eliminate the possibility of the parasitic diodes from conducting and clamping the data line. This increases the common mode range from $-7V$ to $+12V$, or $7V$ from either supply rail.

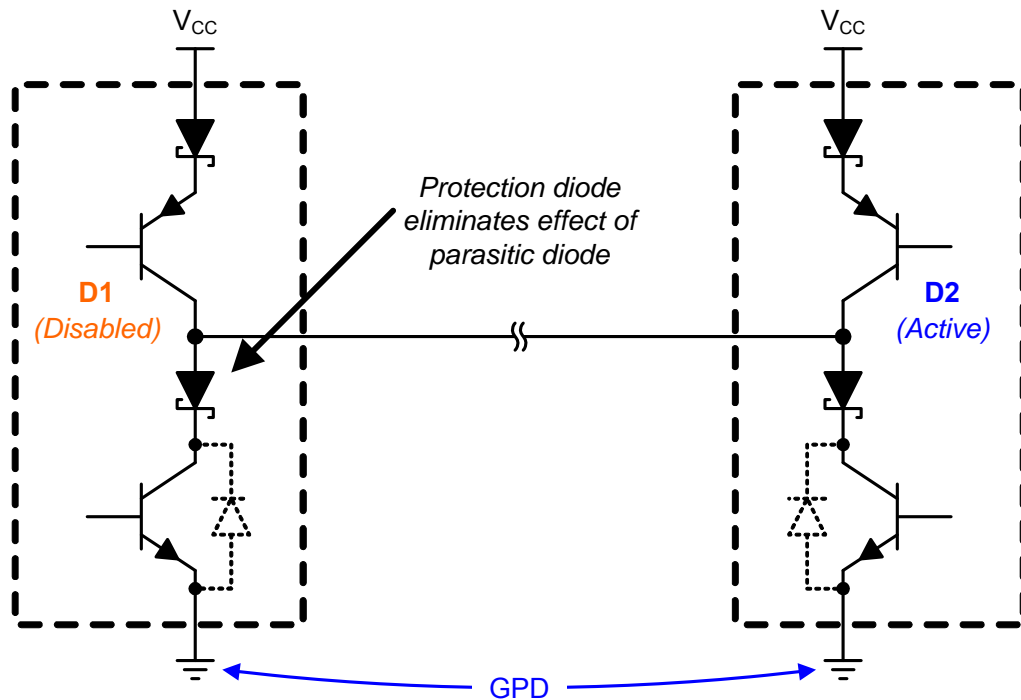


Figure 10. RS-485 Driver Output Structure

The adverse effects of the Schottky diodes are minimal. The driver's V_{OH} and V_{OL} are simply one Schottky diode drop lower and higher. However, the outputs of disabled drivers remain high impedance across the entire common-mode range.

3.2 Driver Contention

If two drivers access the bus at the same time due to hardware or software errors, a large current will flow between the drivers if their outputs are in opposite states. This current will be further amplified in the presence of a large ground potential difference. In this case, the maximum package power dissipation rating will be exceeded. Because RS-422 drivers are intended for use in single-driver/multiple-receiver applications, they do not have contention protection circuits built in and are often damaged when this fault occurs.

However, RS-485 drivers are protected against bus contention effects through the use of short circuit current limiting over a wide common-mode range. They also possess a thermal shutdown feature in case the fault condition continues to exist for a prolonged time. For example, if a short circuit condition occurs, the driver output will be limited to 250mA. If the fault condition remains, the driver will heat up and trigger a thermal shutdown circuit that disables the driver output from the bus. The sudden lack of current flow allows the driver to cool down to a certain degree before it is re-enabled. If the fault is still present, the device will cycle into and out of thermal shutdown until the fault is removed.

3.3 Driver Current

RS-422 drivers have a much lower current rating than RS-485 transceivers. RS-422's single termination, low receiver count, and small common-mode range allow the driver to have a low current rating of $\pm 20\text{mA}$ minimum. In strong contrast, the multipoint applications of RS-485 require a driver to drive parallel terminations, high receiver count, and a wide common-mode range. RS-485 drivers therefore have a minimum drive capability of $\pm 55\text{mA}$, which is three times that of RS-422. Consequently, RS-422 drivers have insufficient drive capability to support multipoint RS-485 applications.

4. Conclusion

RS-422 components are not RS-485 compatible and therefore should not be used in multipoint applications. Conversely, RS-485 components are RS-422 compatible, which is why Intersil's portfolio of differential transceivers are RS485/RS-422 compatible.

5. Revision History

Rev.	Date	Description
0.00	Dec 7, 2017	Initial release

Notice

1. Descriptions of circuits, software and other related information in this document are provided only to illustrate the operation of semiconductor products and application examples. You are fully responsible for the incorporation or any other use of the circuits, software, and information in the design of your product or system. Renesas Electronics disclaims any and all liability for any losses and damages incurred by you or third parties arising from the use of these circuits, software, or information.
 2. Renesas Electronics hereby expressly disclaims any warranties against and liability for infringement or any other claims involving patents, copyrights, or other intellectual property rights of third parties, by or arising from the use of Renesas Electronics products or technical information described in this document, including but not limited to, the product data, drawings, charts, programs, algorithms, and application examples.
 3. No license, express, implied or otherwise, is granted hereby under any patents, copyrights or other intellectual property rights of Renesas Electronics or others.
 4. You shall not alter, modify, copy, or reverse engineer any Renesas Electronics product, whether in whole or in part. Renesas Electronics disclaims any and all liability for any losses or damages incurred by you or third parties arising from such alteration, modification, copying or reverse engineering.
 5. Renesas Electronics products are classified according to the following two quality grades: "Standard" and "High Quality". The intended applications for each Renesas Electronics product depends on the product's quality grade, as indicated below.
"Standard": Computers; office equipment; communications equipment; test and measurement equipment; audio and visual equipment; home electronic appliances; machine tools; personal electronic equipment; industrial robots; etc.
"High Quality": Transportation equipment (automobiles, trains, ships, etc.); traffic control (traffic lights); large-scale communication equipment; key financial terminal systems; safety control equipment; etc.
Unless expressly designated as a high reliability product or a product for harsh environments in a Renesas Electronics data sheet or other Renesas Electronics document, Renesas Electronics products are not intended or authorized for use in products or systems that may pose a direct threat to human life or bodily injury (artificial life support devices or systems; surgical implantations; etc.), or may cause serious property damage (space system; undersea repeaters; nuclear power control systems; aircraft control systems; key plant systems; military equipment; etc.). Renesas Electronics disclaims any and all liability for any damages or losses incurred by you or any third parties arising from the use of any Renesas Electronics product that is inconsistent with any Renesas Electronics data sheet, user's manual or other Renesas Electronics document.
 6. When using Renesas Electronics products, refer to the latest product information (data sheets, user's manuals, application notes, "General Notes for Handling and Using Semiconductor Devices" in the reliability handbook, etc.), and ensure that usage conditions are within the ranges specified by Renesas Electronics with respect to maximum ratings, operating power supply voltage range, heat dissipation characteristics, installation, etc. Renesas Electronics disclaims any and all liability for any malfunctions, failure or accident arising out of the use of Renesas Electronics products outside of such specified ranges.
 7. Although Renesas Electronics endeavors to improve the quality and reliability of Renesas Electronics products, semiconductor products have specific characteristics, such as the occurrence of failure at a certain rate and malfunctions under certain use conditions. Unless designated as a high reliability product or a product for harsh environments in a Renesas Electronics data sheet or other Renesas Electronics document, Renesas Electronics products are not subject to radiation resistance design. You are responsible for implementing safety measures to guard against the possibility of bodily injury, injury or damage caused by fire, and/or danger to the public in the event of a failure or malfunction of Renesas Electronics products, such as safety design for hardware and software, including but not limited to redundancy, fire control and malfunction prevention, appropriate treatment for aging degradation or any other appropriate measures. Because the evaluation of microcomputer software alone is very difficult and impractical, you are responsible for evaluating the safety of the final products or systems manufactured by you.
 8. Please contact a Renesas Electronics sales office for details as to environmental matters such as the environmental compatibility of each Renesas Electronics product. You are responsible for carefully and sufficiently investigating applicable laws and regulations that regulate the inclusion or use of controlled substances, including without limitation, the EU RoHS Directive, and using Renesas Electronics products in compliance with all these applicable laws and regulations. Renesas Electronics disclaims any and all liability for damages or losses occurring as a result of your noncompliance with applicable laws and regulations.
 9. Renesas Electronics products and technologies shall not be used for or incorporated into any products or systems whose manufacture, use, or sale is prohibited under any applicable domestic or foreign laws or regulations. You shall comply with any applicable export control laws and regulations promulgated and administered by the governments of any countries asserting jurisdiction over the parties or transactions.
 10. It is the responsibility of the buyer or distributor of Renesas Electronics products, or any other party who distributes, disposes of, or otherwise sells or transfers the product to a third party, to notify such third party in advance of the contents and conditions set forth in this document.
 11. This document shall not be reprinted, reproduced or duplicated in any form, in whole or in part, without prior written consent of Renesas Electronics.
 12. Please contact a Renesas Electronics sales office if you have any questions regarding the information contained in this document or Renesas Electronics products.
- (Note 1) "Renesas Electronics" as used in this document means Renesas Electronics Corporation and also includes its directly or indirectly controlled subsidiaries.
(Note 2) "Renesas Electronics product(s)" means any product developed or manufactured by or for Renesas Electronics.

(Rev.4.0-1 November 2017)



SALES OFFICES

Renesas Electronics Corporation

<http://www.renesas.com>

Refer to "<http://www.renesas.com/>" for the latest and detailed information.

Renesas Electronics America Inc.
1001 Murphy Ranch Road, Milpitas, CA 95035, U.S.A.
Tel: +1-408-432-8888, Fax: +1-408-434-5351

Renesas Electronics Canada Limited
9251 Yonge Street, Suite 8309 Richmond Hill, Ontario Canada L4C 9T3
Tel: +1-905-237-2004

Renesas Electronics Europe Limited
Dukes Meadow, Millboard Road, Bourne End, Buckinghamshire, SL8 5FH, U.K
Tel: +44-1628-651-700, Fax: +44-1628-651-804

Renesas Electronics Europe GmbH
Arcadiastrasse 10, 40472 Düsseldorf, Germany
Tel: +49-211-6503-0, Fax: +49-211-6503-1327

Renesas Electronics (China) Co., Ltd.
Room 1709 Quantum Plaza, No.27 ZhichunLu, Haidian District, Beijing, 100191 P. R. China
Tel: +86-10-8235-1155, Fax: +86-10-8235-7679

Renesas Electronics (Shanghai) Co., Ltd.
Unit 301, Tower A, Central Towers, 555 Langao Road, Putuo District, Shanghai, 200333 P. R. China
Tel: +86-21-2226-0888, Fax: +86-21-2226-0999

Renesas Electronics Hong Kong Limited
Unit 1601-1611, 16/F., Tower 2, Grand Century Place, 193 Prince Edward Road West, Mongkok, Kowloon, Hong Kong
Tel: +852-2265-6688, Fax: +852-2886-9022

Renesas Electronics Taiwan Co., Ltd.
13F, No. 363, Fu Shing North Road, Taipei 10543, Taiwan
Tel: +886-2-8175-9600, Fax: +886-2-8175-9670

Renesas Electronics Singapore Pte. Ltd.
80 Bendemeer Road, Unit #06-02 Hyflux Innovation Centre, Singapore 339949
Tel: +65-6213-0200, Fax: +65-6213-0300

Renesas Electronics Malaysia Sdn.Bhd.
Unit 1207, Block B, Menara Amcorp, Amcorp Trade Centre, No. 18, Jln Persiaran Barat, 46050 Petaling Jaya, Selangor Darul Ehsan, Malaysia
Tel: +60-3-7955-9390, Fax: +60-3-7955-9510

Renesas Electronics India Pvt. Ltd.
No.777C, 100 Feet Road, HAL 2nd Stage, Indiranagar, Bangalore 560 038, India
Tel: +91-80-67208700, Fax: +91-80-67208777

Renesas Electronics Korea Co., Ltd.
17F, KAMCO Yangjae Tower, 262, Gangnam-daero, Gangnam-gu, Seoul, 06265 Korea
Tel: +82-2-558-3737, Fax: +82-2-558-5338