

# RENESAS TECHNICAL UPDATE

TOYOSU FORESIA, 3-2-24, Toyosu, Koto-ku, Tokyo 135-0061, Japan  
Renesas Electronics Corporation

Product Category	MPU/MCU		Document No.	TN-RZ*-A0087A/E	Rev.	1.00
Title	RZ/G2M V1.3 Additional Explanation for Ethernet AVB-IF		Information Category	Technical Notification		
Applicable Product	RZ/G Series, 2nd Generation RZ/G2M V1.3	Lot No.	Reference Document	RZ/G Series, 2nd Generation User's Manual: Hardware Rev.1.10 (R01UH0808EJ0110)		
		All lots				

This technical update describes document correction of RZ/G Series, 2nd Generation product.

[Summary]

Additional Explanation for "RZ/G Series, 2nd Generation User's Manual: Hardware Rev.1.10".

[Priority level]

Importance: "Normal"

Urgency: "Normal"

[Products]

RZ/G2M V1.3

[Section number and title]

Section 46. EthernetAVB-IF

“This is empty adjustment page to compare next Current (from) and Correction (to) on facing page. “

(By using two pages view of PDF readers this enables previously and prospectively view on odd and even pages.)

[Correction]

- Section 46. EthernetAVB-IF, Page 46-334, 46.4.4 Register Description, (d) Display Plane Register Configuration, Alpha blending related registers are added.

Current (from):

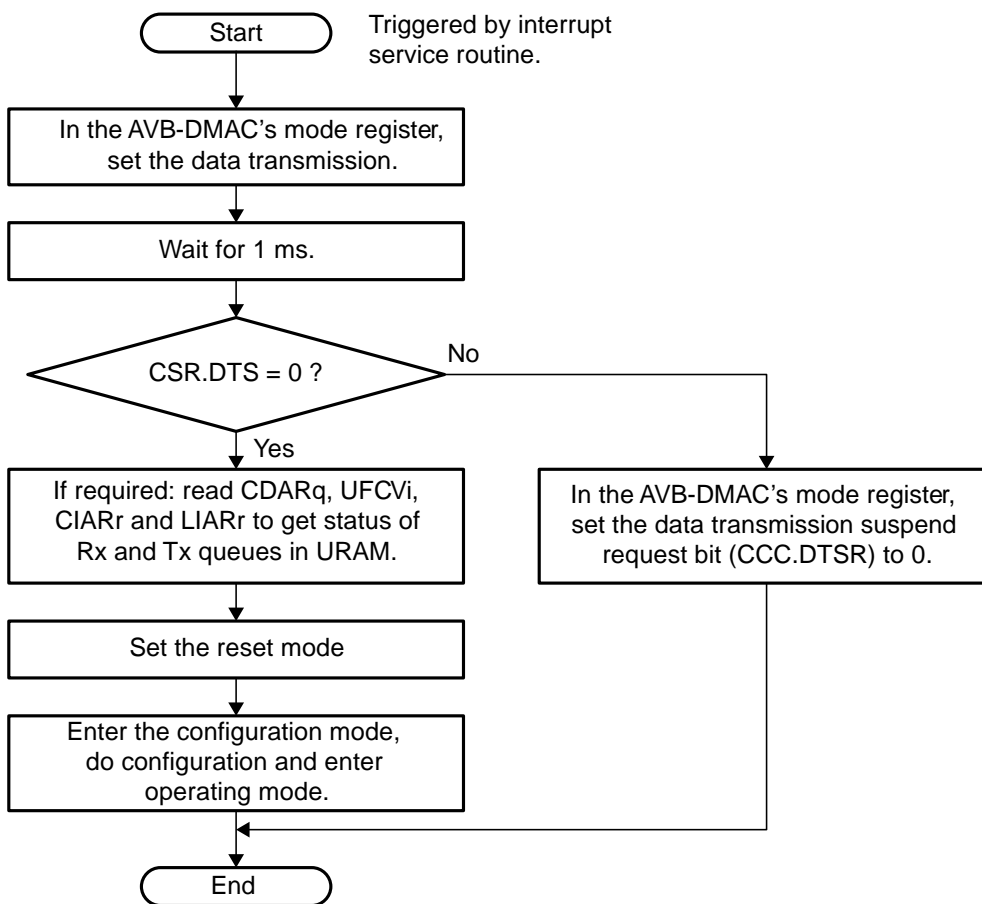


Figure 46.91 Data Transfer Function Stop Flow2 after Read Access Error

### 46.4.3 Power Down Request

If EthernetAVB-IF gets a power down request while writing to work RAM, it may happen that the request is not accepted even if the transfer is completed. Due to this the external power down module cannot complete the power down sequence.

A power down request is acceptable only when EthernetAVB-IF is in RESET state.

Correction (to):

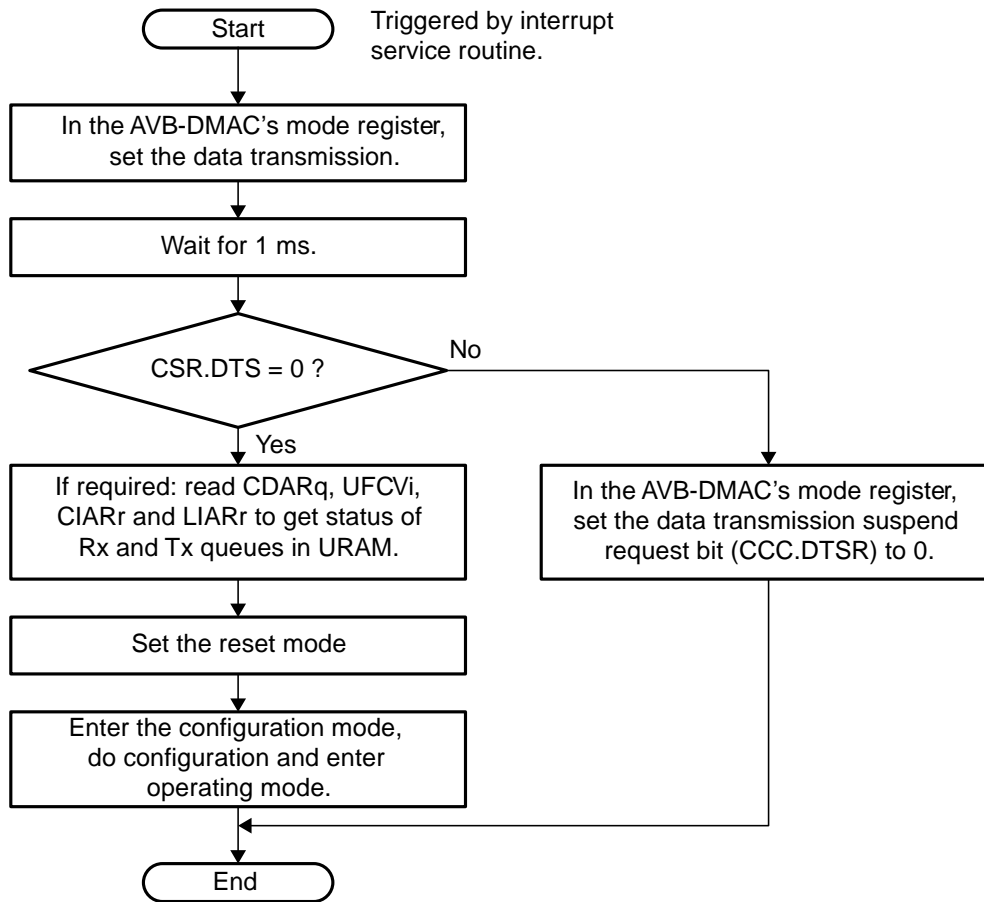


Figure 46.91 Data Transfer Function Stop Flow2 after Read Access Error

**46.4.3 Power Down Request**

If EthernetAVB-IF gets a power down request while writing to work RAM, it may happen that the request is not accepted even if the transfer is completed. Due to this the external power down module cannot complete the power down sequence. A power down request is acceptable only when EthernetAVB-IF is in RESET state.

**46.4.4 Ethernet AVB RGMII Clock Delay Mode is generating low analog delay for RZ/G2M V1.3**

When using LSI's transmit internal delay mode in RGMII transmission, an error may be detected by the opposite device. Background is that not sufficient analog delay is generated by the Internal delay function. Please note that AC specification of RZ/G2M V1.3 is different for other RZ/G second generation products.

[Description]

When using RGMII Clock Delay Mode, there is additional usage note for RZ/G2M V1.3 product,

[Reason for Correction]

Additional Explanation.

-----