

RENESAS TECHNICAL UPDATE

TOYOSU FORESIA, 3-2-24, Toyosu, Koto-ku, Tokyo 135-0061, Japan
Renesas Electronics Corporation

Product Category	MPU/MCU		Document No.	TN-RZ*-A0062A/E	Rev.	1.00
Title	RZ/A Series: RLIN3 Self-Test Mode constraints		Information Category	Technical Notification		
Applicable Product	See following	Lot No.	Reference Document	See following		
		All lot				

The following descriptions about the usage conditions of the RLIN3 Self-Test Mode in User's Manual will be added and modified. (Change points are **Red** character.)

Applicable products and relevant documents

Applicable products		Relevant documents	Rev.	Document number
series	Group			
RZ/A	RZ/A1H, RZ/A1M	RZ/A1H Group, RZ/A1M Group User's Manual: Hardware	Rev 4.00	R01UH0403EJ0400
	RZ/A1L	RZ/A1L Group, RZ/A1LU Group, RZ/A1LC Group User's Manual: Hardware	Rev 4.00	R01UH0437EJ0400

1. Adding descriptions

[After]

25.8 LIN Self-Test Mode

Regardless of the setting of the baud rate related registers, the baud rate setting is the LIN communication clock source/16 [bps].
(The NSPB bits in the RLIN3nLWBR register should be set to 0000_B or 1111_B.)

(The LPRS bits in the RLIN3nLWBR register should be set to 000_B.)

25.8.2 Transmission in LIN Master Self-Test Mode

- Set the baud rate, noise filter, and interrupt output related registers.

RLIN3nLWBR register = 0000**000**_{XB}*₁

RLIN3nLBRP0 register = xxxxxxxx_B*₁

RLIN3nLBRP1 register = xxxxxxxx_B*₁

RLIN3nLMD register = 00xxxx00_B*₁

25.8.3 Reception in LIN Master Self-Test Mode

- Set the baud rate, noise filter, and interrupt output related registers.

RLN3nLWBR register = 0000000xB*1

RLN3nLBRP0 register = xxxxxxxxB*1

RLN3nLBRP1 register = xxxxxxxxB*1

RLN3nLMD register = 00xxxx00B*1

[Before]

25.8 LIN Self-Test Mode

Regardless of the setting of the baud rate related registers, the baud rate setting is the LIN communication clock source/16 [bps].

(The NSPB bits in the RLN3nLWBR register should be set to 0000_B or 1111_B.)

25.8.2 Transmission in LIN Master Self-Test Mode

- Set the baud rate, noise filter, and interrupt output related registers.

RLN3nLWBR register = 0000xxxxxB*1

RLN3nLBRP0 register = xxxxxxxxB*1

RLN3nLBRP1 register = xxxxxxxxB*1

RLN3nLMD register = 00xxxx00B*1

25.8.3 Reception in LIN Master Self-Test Mode

- Set the baud rate, noise filter, and interrupt output related registers.

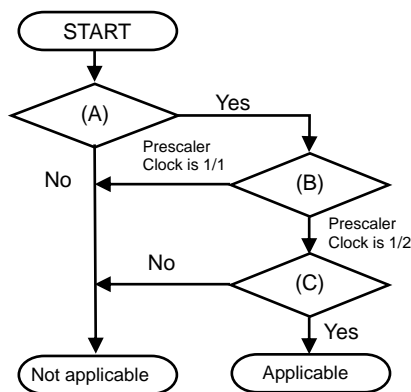
RLN3nLWBR register = 0000xxxxxB*1

RLN3nLBRP0 register = xxxxxxxxB*1

RLN3nLBRP1 register = xxxxxxxxB*1

RLN3nLMD register = 00xxxx00B*1

2. Judgment Flow



Judgement	Details
(A)	Using Self-Test mode Function. • LSTM bit = 1 in RLIN3nLSTC register.
(B)	What is the Prescaler Clock select in Self-Test mode? • RLIN3nLWBR.LPRS = 000 _B (Prescaler Clock is 1/1.) • RLIN3nLWBR.LPRS = 001 _B (Prescaler Clock is 1/2.)
(C)	Using noise filter setting in Self-Test mode. • RLIN3nLMD.LRDNFS = 0 (The noise filter is enabled.) • RLIN3nLMD.LRDNFS = 1 (The noise filter is disabled.)

Fin.