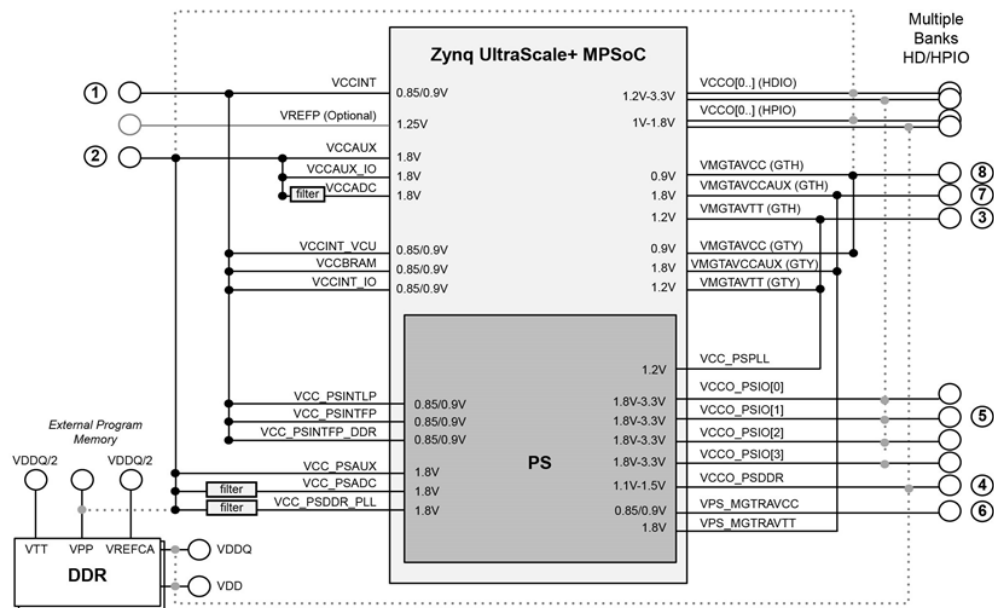
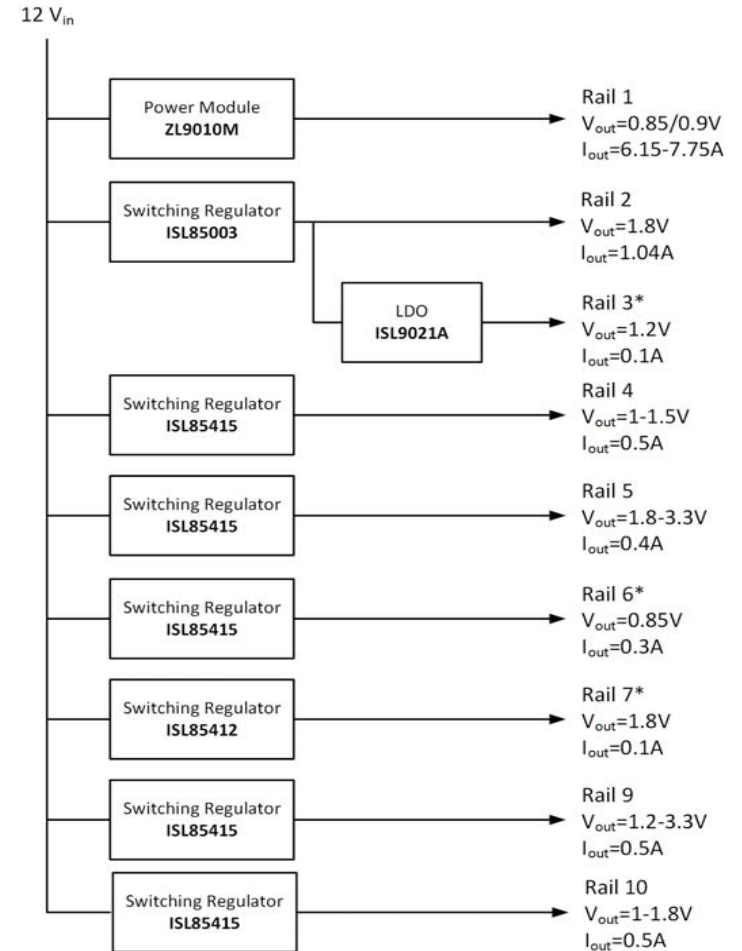


USECASE 1 #1



© Copyright 2017-2017 Xilinx, Inc.
All Rights Reserved.

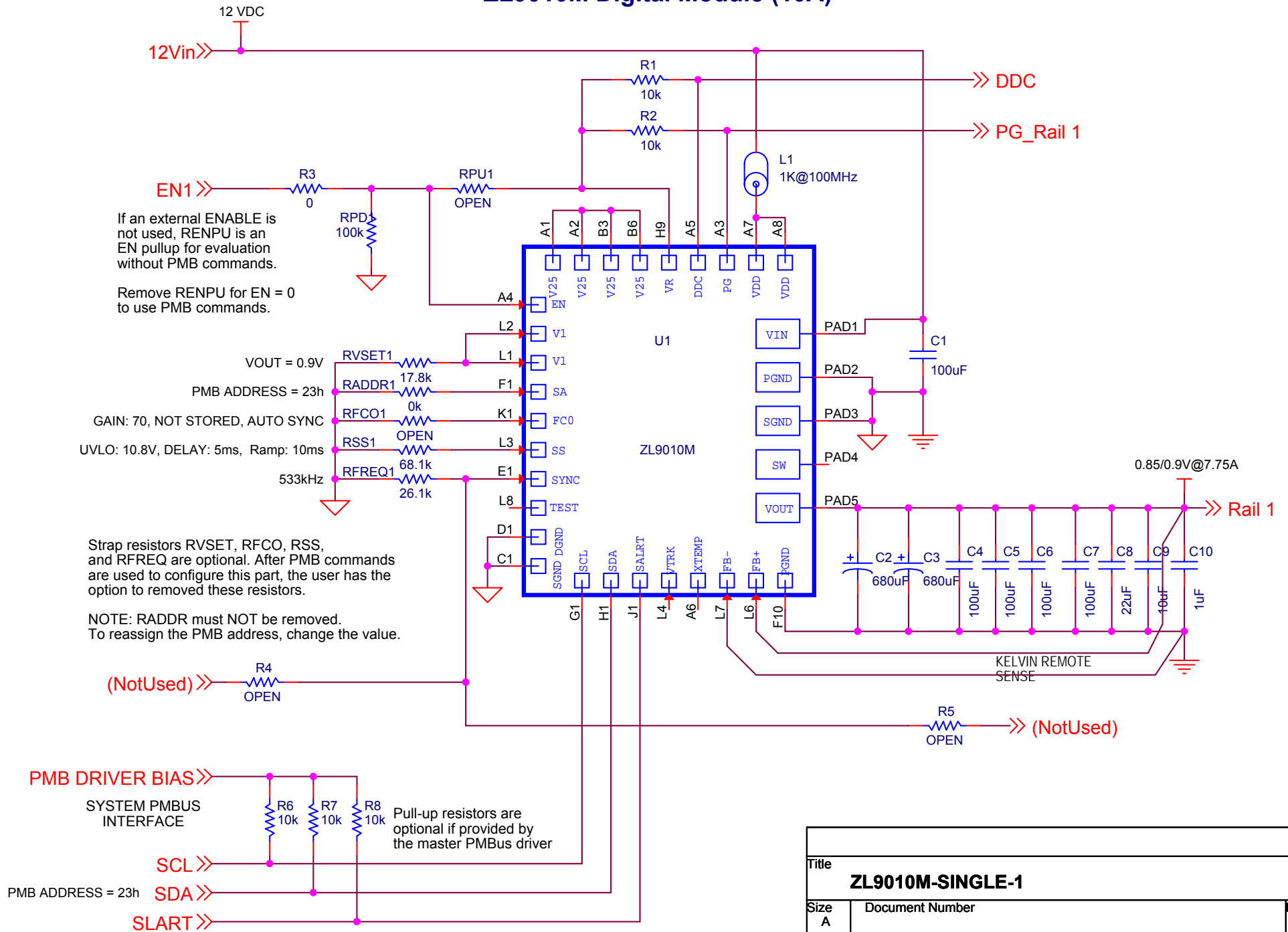
Rail	Voltage	Power Supply Rails
Rail 1	0.85/0.9V	VCCINT, VCCINT_VCU, VCCBRAM, VCCINT_IO, VCC_PSINTLP, VCC_PSINTFP, VCC_PSINTFP_DDR
Rail 2*	1.8V*	VCCAUX, VCCAUX_IO, VCCADC, VCC_PSAUX, VCC_PSDDR_PLL, VCC_PSADC
Rail 3*	1.2V*	VMGTAVTT(GTH), VMGTAVTT(GTY), VCC_PSPLL
Rail 4	1-1.5V	VCCO_PSDDR, DDR_VDD2, DDR_VDDQ
Rail 5	1.8-3.3V	VCCO_PSIQ
Rail 6*	0.85/0.9V	VPS_MGTRAVCC
Rail 7*	1.8V*	VMGTAVCCAUX(GTH), VMGTAVCCAUX(GTY), VPS_MGTRAVTT
Rail 8*	0.9V*	VMGTAVCC(GTH), VMGTAVCC(GTY)
Rail 9	1.2-3.3V	HDIO VCCO
Rail 10	1.0-1.8V	HPIO VCCO



intersil

Title ZYNQ US+ MPSoC Power Rails		
Size B	Document Number <Doc>	Rev A
Date: Thursday, March 09, 2017	Sheet 1	of 10

ZL9010M Digital Module (10A)



Title		
ZL9010M-SINGLE-1		
Size A	Document Number	Rev
Date:	Sheet 2	of 10

5	4	3	2	1
---	---	---	---	---



1

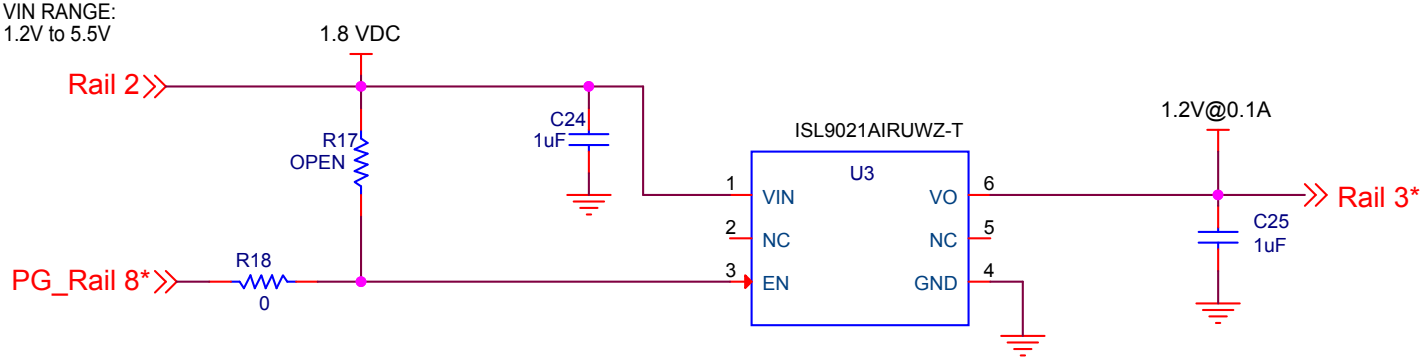
1000

1

1

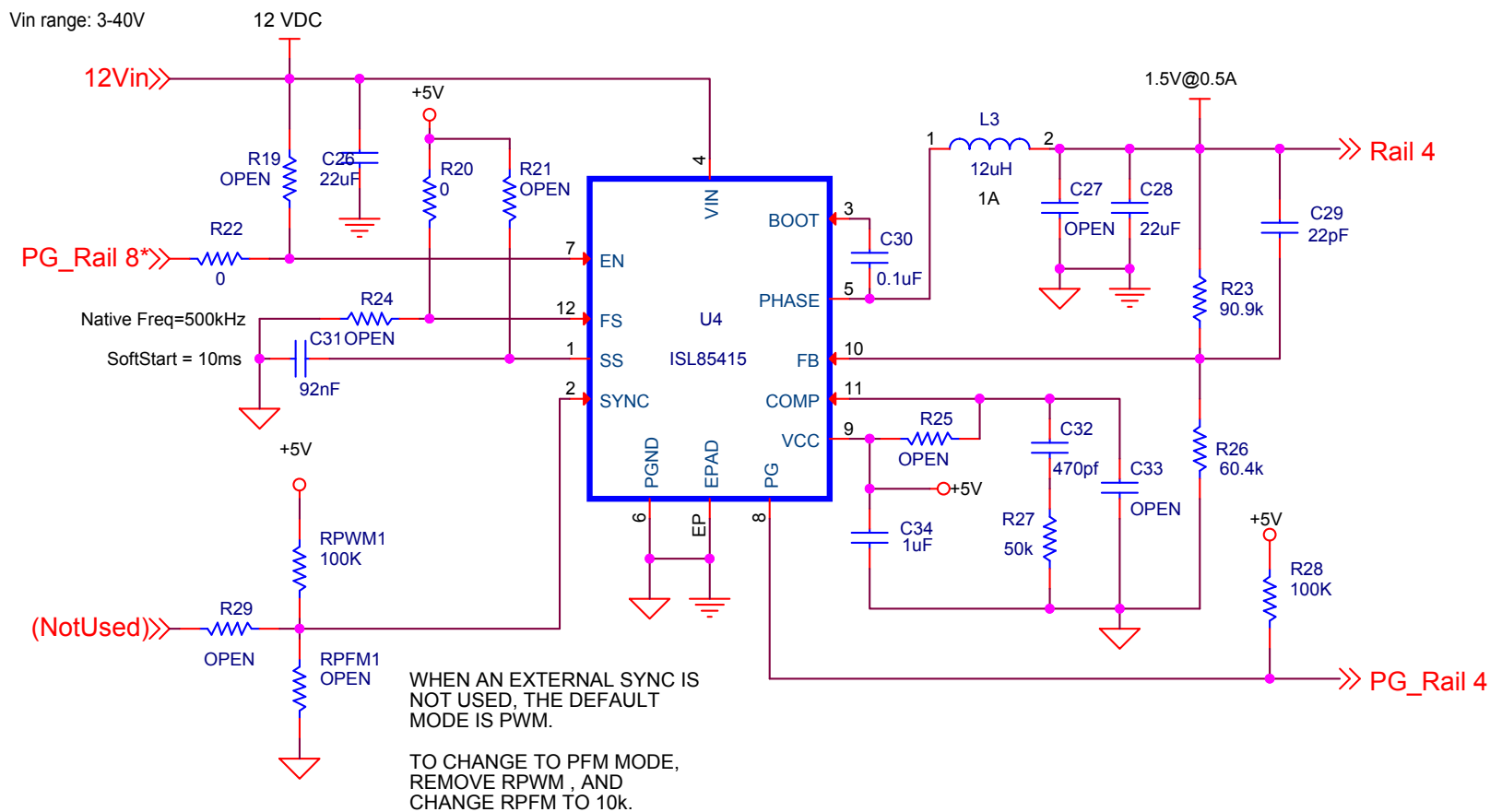
evc

ISL9021A Single Output (250mA)



Title		
ISL9021A-SINGLE-1		
Size A	Document Number	Rev
Date:	Sheet 4	of 10

ISL85415 SINGLE OUTPUT (500mA)

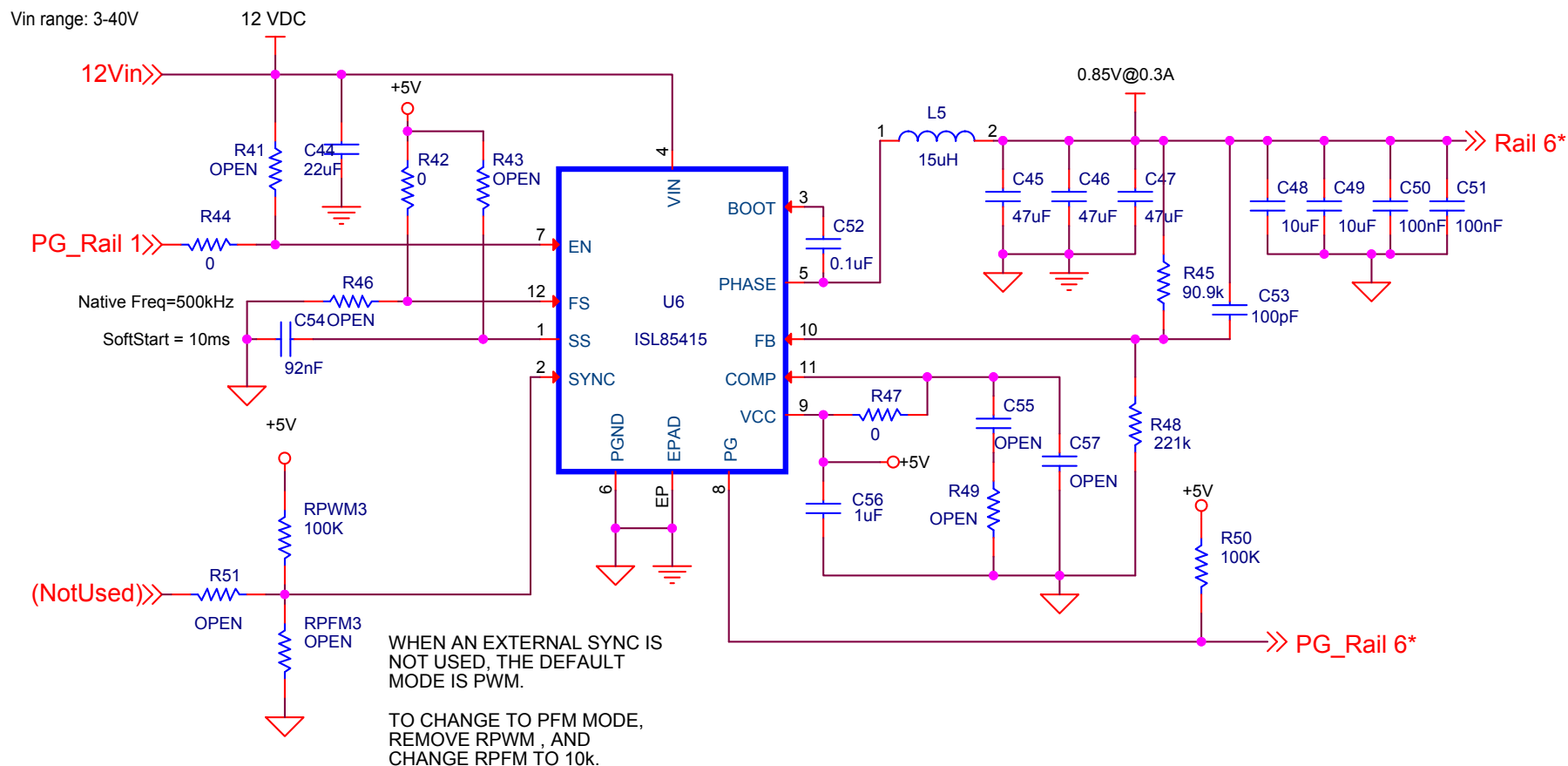


Title		
ISL85415-SINGLE-1		
Size A	Document Number	Rev
Date:	Thursday, March 09, 2017	Sheet 5 of 10

[illegible]

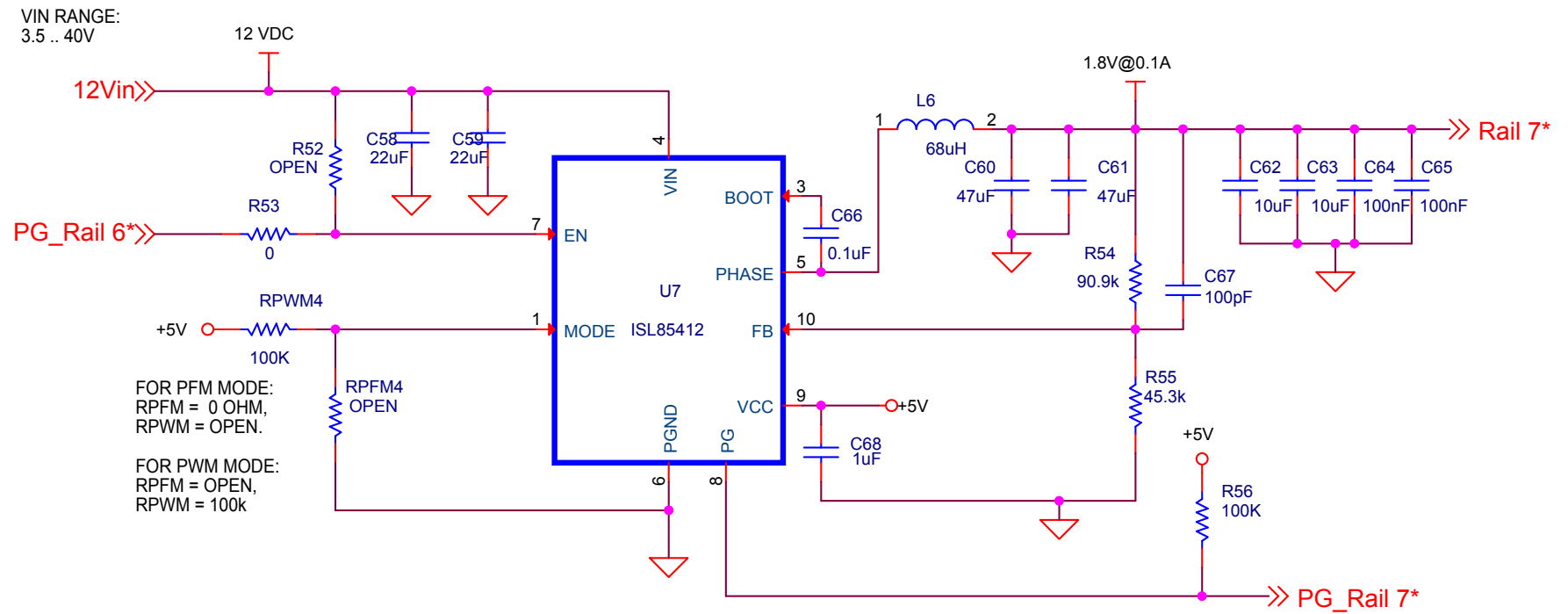
Date: Thursday, March 09, 2017 Sheet 6 of 10

ISL85415 SINGLE OUTPUT (500mA)



Title		
ISL85415-SINGLE-1		
Size	Document Number	Rev
A		
Date:	Thursday, March 09, 2017	Sheet 7 of 10
	2	1

ISL85412 SINGLE OUTPUT (150mA)



Title ISL85412-SINGLE-1

Size
A

Document Number
<Doc>

Rev

Date: Thursday, March 09, 2017

Sheet 8 of 10

12VDC

12Vin

PG_Rail 7

Native Freq=500kHz

SoftStart = 10ms

+5V

RPWM5 100K

R67 OPEN

RPFM5 OPEN

U8 ISL85415

1.8V@0.5A

Rail 9

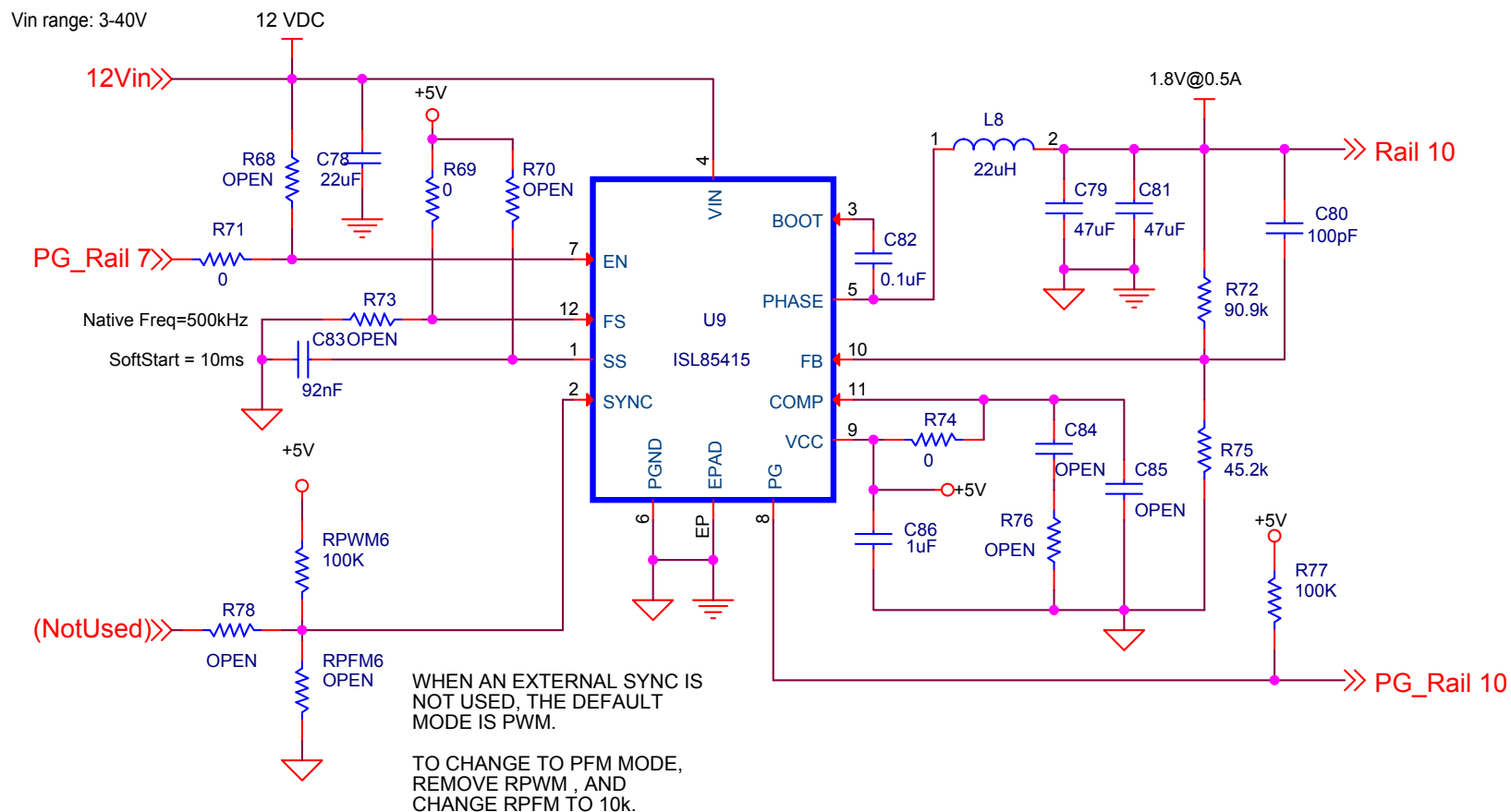
PG_Rail 9

WHEN AN EXTERNAL SYNC IS NOT USED, THE DEFAULT MODE IS PWM.

TO CHANGE TO PFM MODE, REMOVE RPWM, AND CHANGE RPFM TO 10k.

Title ISL85415-SINGLE-1			
Size A	Document Number		Rev
Date:	Thursday, March 09, 2017	Sheet	9 of 10

ISL85415 SINGLE OUTPUT (500mA)



Title		
ISL85415-SINGLE-1		
Size	Document Number	Rev
A		
Date:	Thursday, March 09, 2017	Sheet 10 of 10