

To our customers,

Old Company Name in Catalogs and Other Documents

On April 1st, 2010, NEC Electronics Corporation merged with Renesas Technology Corporation, and Renesas Electronics Corporation took over all the business of both companies. Therefore, although the old company name remains in this document, it is a valid Renesas Electronics document. We appreciate your understanding.

Renesas Electronics website: <http://www.renesas.com>

April 1st, 2010
Renesas Electronics Corporation

Issued by: Renesas Electronics Corporation (<http://www.renesas.com>)

Send any inquiries to <http://www.renesas.com/inquiry>.

Notice

1. All information included in this document is current as of the date this document is issued. Such information, however, is subject to change without any prior notice. Before purchasing or using any Renesas Electronics products listed herein, please confirm the latest product information with a Renesas Electronics sales office. Also, please pay regular and careful attention to additional and different information to be disclosed by Renesas Electronics such as that disclosed through our website.
2. Renesas Electronics does not assume any liability for infringement of patents, copyrights, or other intellectual property rights of third parties by or arising from the use of Renesas Electronics products or technical information described in this document. No license, express, implied or otherwise, is granted hereby under any patents, copyrights or other intellectual property rights of Renesas Electronics or others.
3. You should not alter, modify, copy, or otherwise misappropriate any Renesas Electronics product, whether in whole or in part.
4. Descriptions of circuits, software and other related information in this document are provided only to illustrate the operation of semiconductor products and application examples. You are fully responsible for the incorporation of these circuits, software, and information in the design of your equipment. Renesas Electronics assumes no responsibility for any losses incurred by you or third parties arising from the use of these circuits, software, or information.
5. When exporting the products or technology described in this document, you should comply with the applicable export control laws and regulations and follow the procedures required by such laws and regulations. You should not use Renesas Electronics products or the technology described in this document for any purpose relating to military applications or use by the military, including but not limited to the development of weapons of mass destruction. Renesas Electronics products and technology may not be used for or incorporated into any products or systems whose manufacture, use, or sale is prohibited under any applicable domestic or foreign laws or regulations.
6. Renesas Electronics has used reasonable care in preparing the information included in this document, but Renesas Electronics does not warrant that such information is error free. Renesas Electronics assumes no liability whatsoever for any damages incurred by you resulting from errors in or omissions from the information included herein.
7. Renesas Electronics products are classified according to the following three quality grades: “Standard”, “High Quality”, and “Specific”. The recommended applications for each Renesas Electronics product depends on the product’s quality grade, as indicated below. You must check the quality grade of each Renesas Electronics product before using it in a particular application. You may not use any Renesas Electronics product for any application categorized as “Specific” without the prior written consent of Renesas Electronics. Further, you may not use any Renesas Electronics product for any application for which it is not intended without the prior written consent of Renesas Electronics. Renesas Electronics shall not be in any way liable for any damages or losses incurred by you or third parties arising from the use of any Renesas Electronics product for an application categorized as “Specific” or for which the product is not intended where you have failed to obtain the prior written consent of Renesas Electronics. The quality grade of each Renesas Electronics product is “Standard” unless otherwise expressly specified in a Renesas Electronics data sheets or data books, etc.
 - “Standard”: Computers; office equipment; communications equipment; test and measurement equipment; audio and visual equipment; home electronic appliances; machine tools; personal electronic equipment; and industrial robots.
 - “High Quality”: Transportation equipment (automobiles, trains, ships, etc.); traffic control systems; anti-disaster systems; anti-crime systems; safety equipment; and medical equipment not specifically designed for life support.
 - “Specific”: Aircraft; aerospace equipment; submersible repeaters; nuclear reactor control systems; medical equipment or systems for life support (e.g. artificial life support devices or systems), surgical implantations, or healthcare intervention (e.g. excision, etc.), and any other applications or purposes that pose a direct threat to human life.
8. You should use the Renesas Electronics products described in this document within the range specified by Renesas Electronics, especially with respect to the maximum rating, operating supply voltage range, movement power voltage range, heat radiation characteristics, installation and other product characteristics. Renesas Electronics shall have no liability for malfunctions or damages arising out of the use of Renesas Electronics products beyond such specified ranges.
9. Although Renesas Electronics endeavors to improve the quality and reliability of its products, semiconductor products have specific characteristics such as the occurrence of failure at a certain rate and malfunctions under certain use conditions. Further, Renesas Electronics products are not subject to radiation resistance design. Please be sure to implement safety measures to guard them against the possibility of physical injury, and injury or damage caused by fire in the event of the failure of a Renesas Electronics product, such as safety design for hardware and software including but not limited to redundancy, fire control and malfunction prevention, appropriate treatment for aging degradation or any other appropriate measures. Because the evaluation of microcomputer software alone is very difficult, please evaluate the safety of the final products or system manufactured by you.
10. Please contact a Renesas Electronics sales office for details as to environmental matters such as the environmental compatibility of each Renesas Electronics product. Please use Renesas Electronics products in compliance with all applicable laws and regulations that regulate the inclusion or use of controlled substances, including without limitation, the EU RoHS Directive. Renesas Electronics assumes no liability for damages or losses occurring as a result of your noncompliance with applicable laws and regulations.
11. This document may not be reproduced or duplicated, in any form, in whole or in part, without prior written consent of Renesas Electronics.
12. Please contact a Renesas Electronics sales office if you have any questions regarding the information contained in this document or Renesas Electronics products, or if you have any other inquiries.

(Note 1) “Renesas Electronics” as used in this document means Renesas Electronics Corporation and also includes its majority-owned subsidiaries.

(Note 2) “Renesas Electronics product(s)” means any product developed or manufactured by or for Renesas Electronics.

R8C Family

Using Memory Beyond the 64K Boundary

Introduction

The first releases of the R8C were for products that never exceeded 64K of memory space. Since this meant that all memory accesses were in the “near” space the compiler for the R8C did not support the commands LDE and STE. These commands are used to load and store data to extended memory areas. For data within the 64K boundary the MOV command is used, however, for data accesses beyond this limit the LDE and STE must be used. The linker also had to place all program code and constant data in the “near” space since that was all that was available.

Target Device

Applicable MCU: R8C/2X Devices

Contents

1. R8C/2X Compiler Option and Locating Constants..... 1
2. Using the Expanded Memory with Assembly Startup Files 3
3. Using the Expanded Memory with C Startup Files 6

1. R8C/2X Compiler Option and Locating Constants

Some of the new R8C/2X devices now support memory beyond the 64K address boundary. When this happened a compiler switch was added which restored the LDE and STE commands since they were necessary. This switch could be set in HEW by going to the Build>>Renesas M16C Standard Toolchain menu item then selecting the “Generates code for R8C/Tiny R8C/2X) series” option under the CPU tab as shown below.

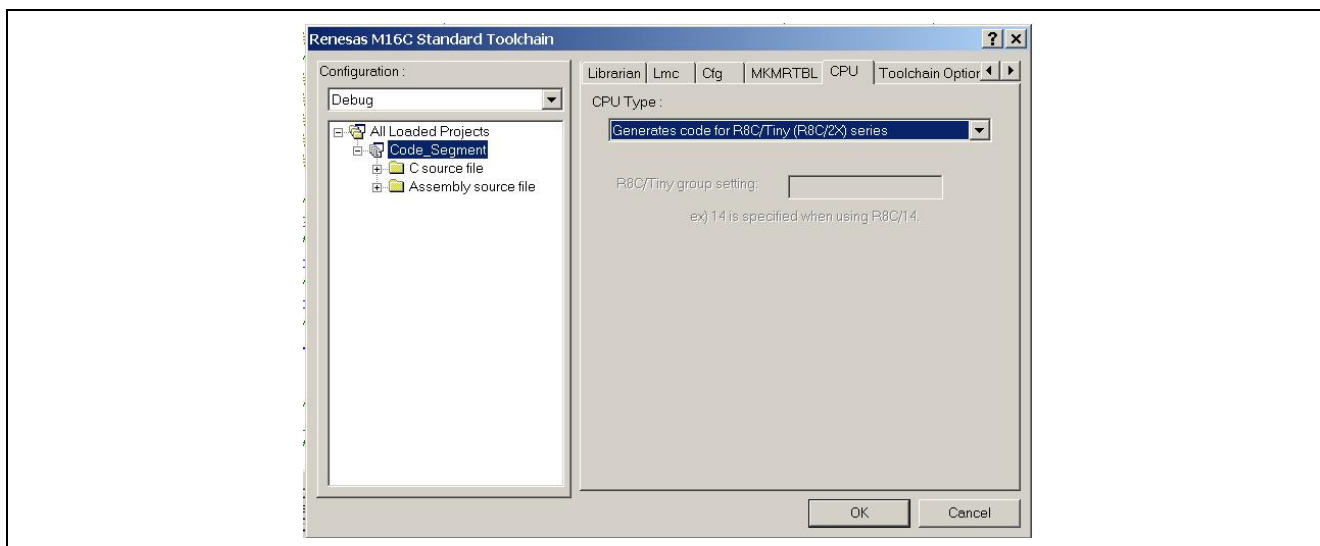


Figure 1 R8C/2X Compiler Option

This option will restore the LDE and STE commands needed to access Far data and will also result in the default location for constant data to be in the Far space. Though this is not a problem it does result in less efficient access to this constant data and means all pointers that would access that data must be declared as Far pointers. For devices that do not have any memory past the 64K boundary (even if it is a R8C/2X part) it is easiest to select the “Generates code for the R8C/Tiny” option for CPU Type. This will result in all constants being mapped to Near Memory space.

In most cases it is recommended that the constant data be located in Near Memory since it is more efficient (since pointers are only 16 bits and the MOV command can be used rather than the LDE and STE). There is no penalty paid for code in Far Memory since the program counter can directly access the 20 bit memory space.

The simple way to have constants linked to the Near Memory space is to change the default ROM data setting so it is in Near Memory space rather than Far Memory space. This is done by going to the Build>>Renesas M16C Standard Toolchain menu and under the Compiler tab select Code Modification and check the -fnROM option. This is shown below in Figure 2.

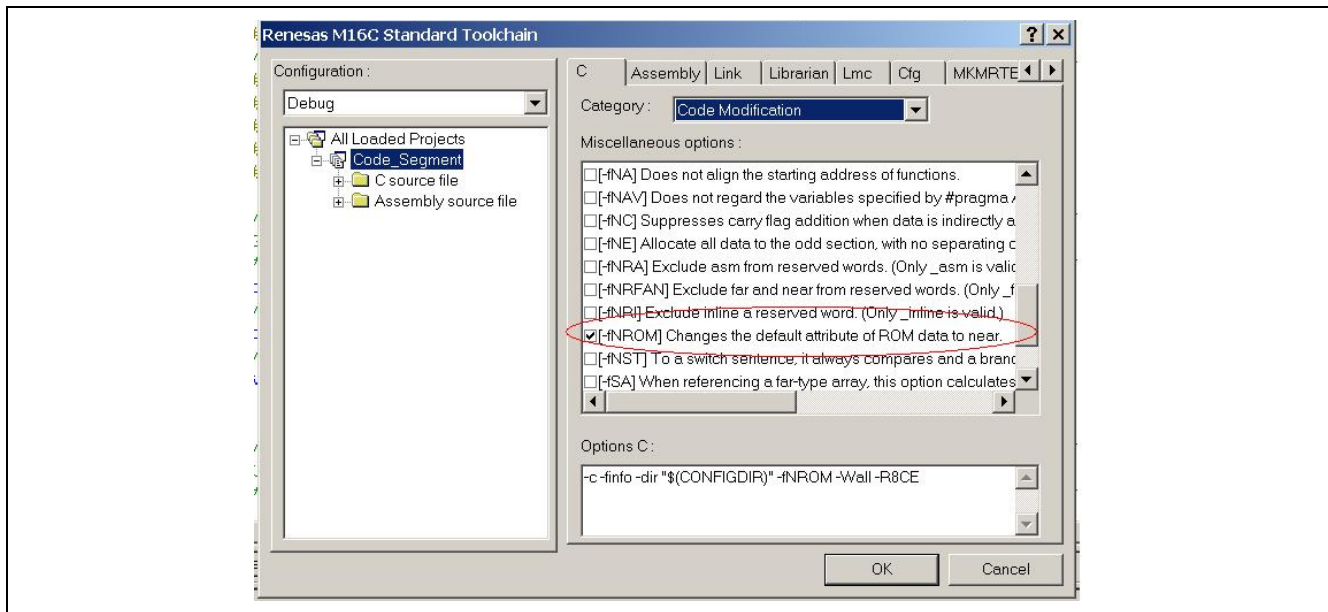
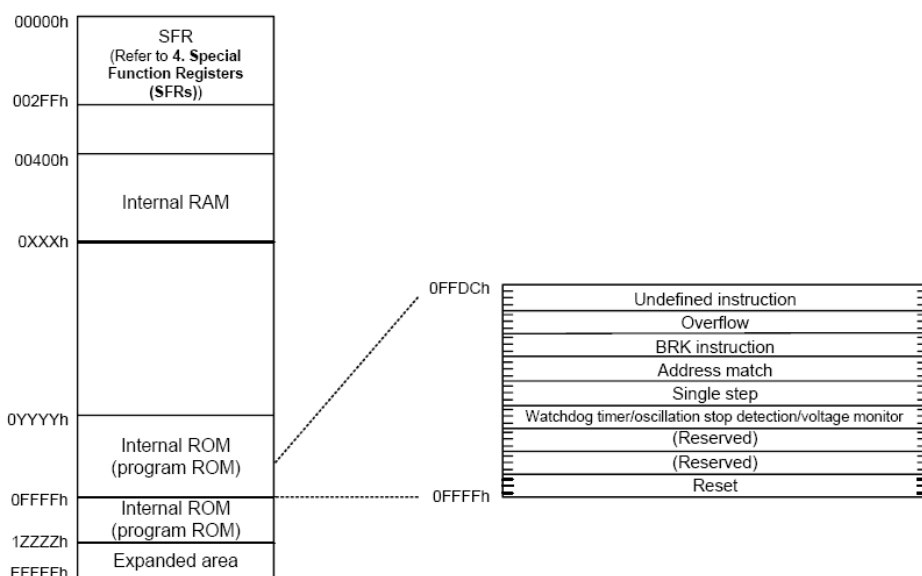


Figure 2 Putting Constants in Near Memory

2. Using the Expanded Memory with Assembly Startup Files

One issue with the R8C/2X devices that have memory beyond the 64K limit is the Special Fixed vectors are located at 0FFDCh to 0FFFFh as shown in the memory map below. Since the expanded memory area is not contiguous with the internal program space shown in the map below the linker cannot directly utilize the expanded area to store code. If the start of ROM is indicated as 04000h in the startup files the linker will begin at that location and fill the memory up to the fixed vector area. The linker cannot automatically “jump around” the fixed vector area and start utilizing the expanded area.



NOTE:

1. The blank regions are reserved. Do not access locations in these regions.

Part Number	Internal ROM			Internal RAM	
	Size	Address 0YYYYh	Address 1ZZZZh	Size	Address 0XXXXh
R5F21244SNFP, R5F21244SDFP	16 Kbytes	0C000h	-	1 Kbyte	007FFh
R5F21246SNFP, R5F21246SDFP	32 Kbytes	08000h	-	2 Kbytes	00BFFh
R5F21247SNFP, R5F21247SDFP	48 Kbytes	04000h	-	2.5 Kbytes	00DFFh
R5F21248SNFP, R5F21248SDFP	64 Kbytes	04000h	13FFFh	3 Kbytes	00FFFh

Figure 3 Memory Map of R8C/24 Group

Using this expanded area is not difficult and the attached project workspace (R8C_Expanded_Memory) is a good example of how to set it up.

Copy the folder R8C_Expanded_Memory into the C:\workspace directory created by HEW and open the workspace file 'R8C_Expanded_Memory.hws'. Upon opening the workspace, the 'Assembly Startup' project is set as the default project. If it is not, then switch to it by selecting from the toolbar Project>>Set Current Project.

The first thing that is done is to add an expanded code section, named expanded_program. This is accomplished by adding the following lines to the sect30.inc file (this is located near the bottom of the file)

```
; .section expanded_program, CODE  
; .org 10000H
```

The next step is to assign modules or functions to be linked to that section. The easiest implementation assigns all the functions in a C module to that section. This is done with the code in the lcd.c module of the project. The following statement is added to the top of the file

```
; #pragma SECTION program expanded_program
```

This results in all the code in that module being linked to the new section. After linking this module the default program section is used for other modules.

It is also possible to link just one function or one section of a C module. To do this the same statement (#pragma SECTION program expanded_program) is used at the beginning of the code that will be added to the new section. At the end of the function or the functions to be linked the SECTION statement below is used to force the linker to use the default program section:

```
; #pragma SECTION program program
```

The FlashLEDs function from the flashleds.c module has been added to the expanded program space using this method.

Figure 4 is a map that shows the result of the changes that were incorporated. Notice that there is a section starting at 010000h which is a code segment [C]. In this segment are functions which were in the lcd.c file where the #pragma Section command was used to change the link location. There is also the FlashLEDs function where only one function out of a file was placed in the link location. The ToggleLEDs function which is also in the flashleds.c module is in the default (near) program space. You can also see the Constant data ucReplace is located in the rom_NE section.

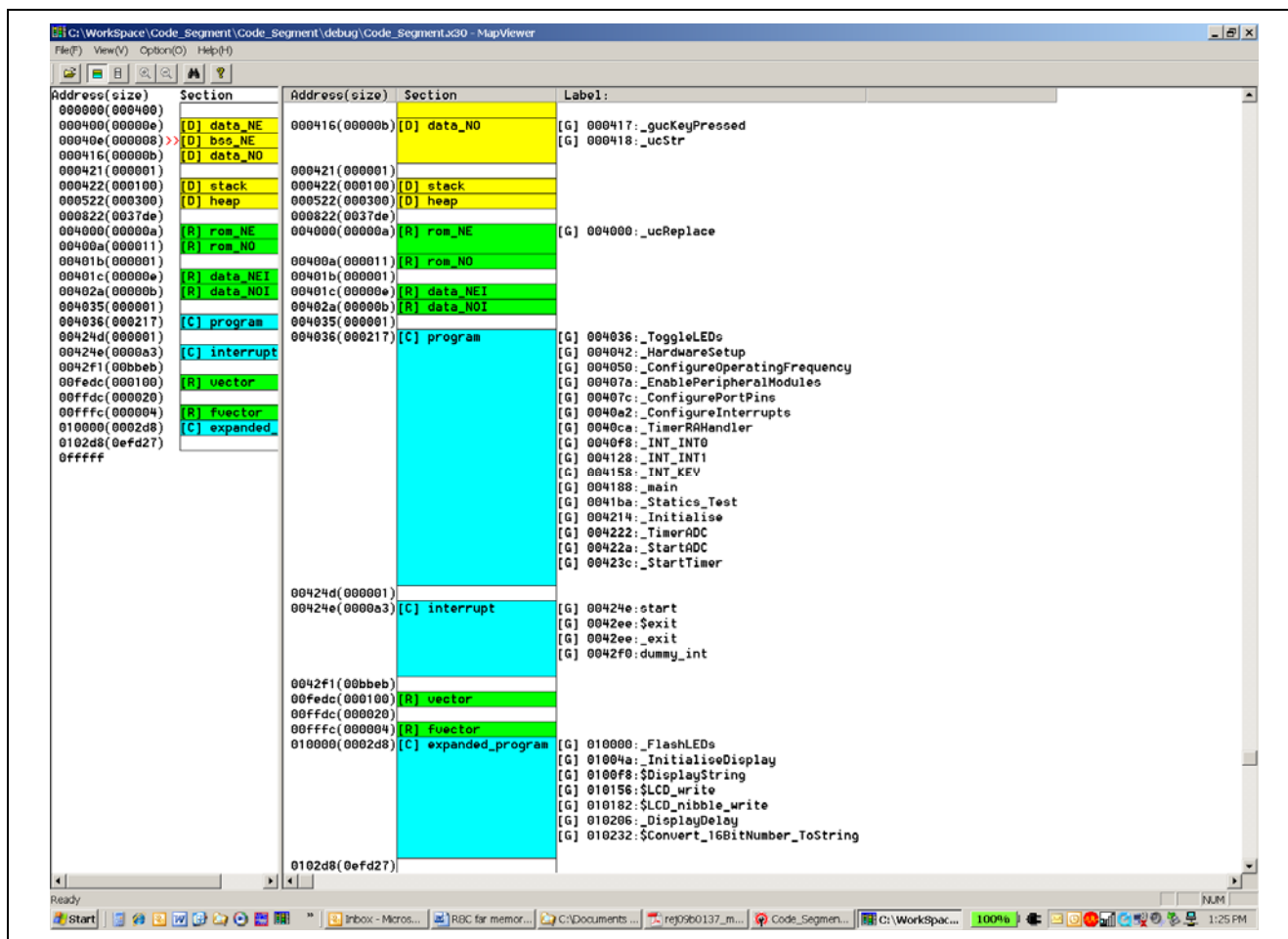


Figure 4 Map with Code in Extended Area & Constants in Near Memory

3. Using the Expanded Memory with C Startup Files

Next we will introduce performing this same operation on the C Startup based project files that are introduced with the NC30 toolchain version 5.40 and later. Using the map view feature of the project, creating and modifying sections, can be accomplished using a graphical interface. This makes it much easier than making the same modification using the assembly startup versions

Using the same workspace, switch to the CStartup_Code project by selecting from the toolbar Project>>Set Current Project.

Once the project is loaded, select from the toolbar View>>Map and the following window will appear:

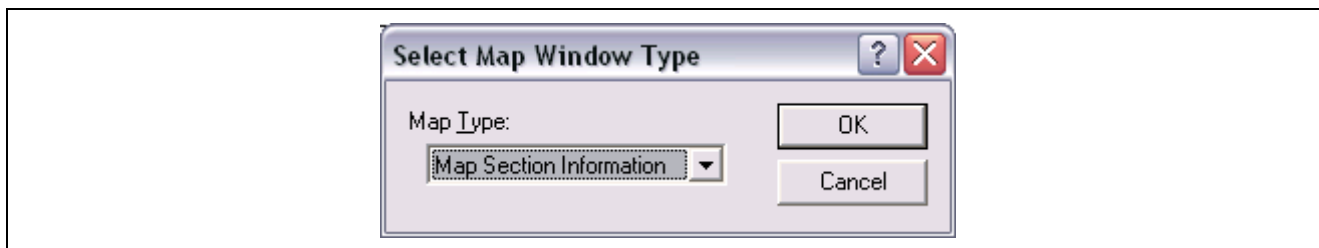


Figure 5 Open Map Section Information

Click 'OK' for the Map Section window to appear in the HEW environment. Note you may have to slide the windows around to view the Map window. The window should look like the one below:

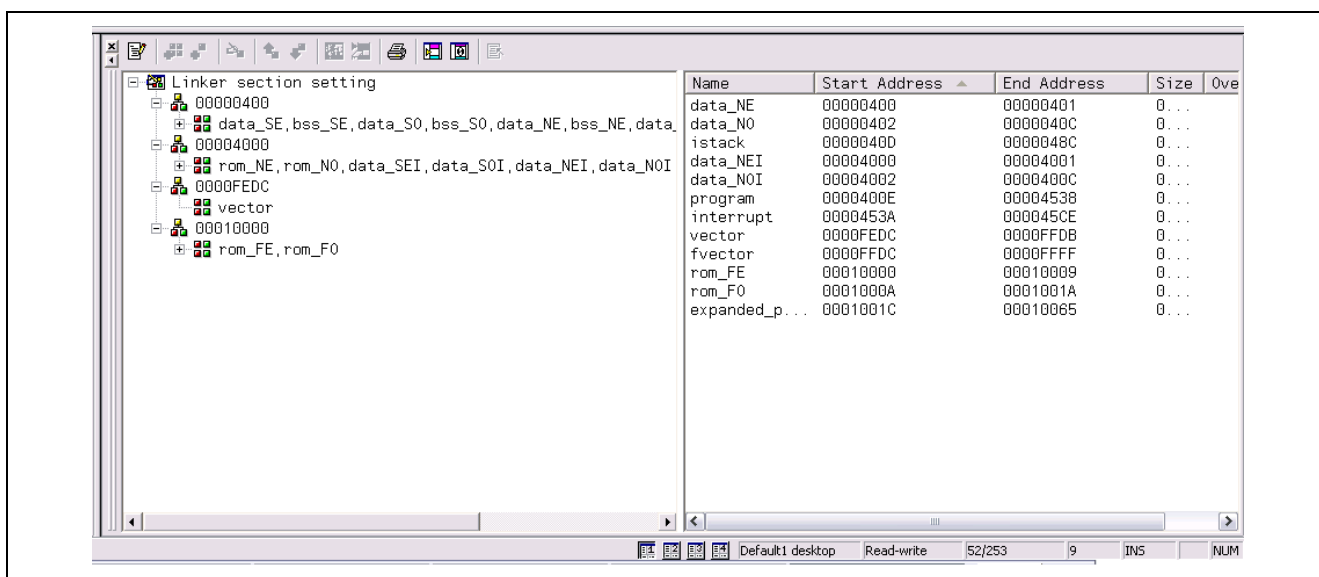





Figure 6 Viewing Map Section Information

Note that you can see the sections of each defined memory area in a graphical list view. To edit/create a new section simply click the edit icon  to enter map edit mode.

Next click on the entry that contains 'rom_FE, rom_F0', this will select this section group that starts at address 010000h. Now click Add Section  to add a new section to the group. For this example, enter the name 'expanded_program' and click 'Ok'. You will now see your section added to the section group. Expand the section group you have been modifying and move the 'expanded_program' section to the top using Move Up . When done it should look like this:

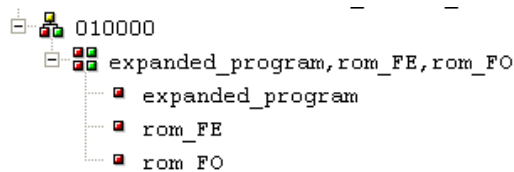



Figure 7 Expanded Section Group

Click  to exit the map edit mode and send the updated map info to the linker.

Repeated from above, the next step is to assign modules or functions to be linked to that section. The easiest implementation assigns all the functions in a C module to that section. This is done with the code in the lcd.c module of the project. Uncomment the following statement at the top of the file

```
; #pragma SECTION program expanded_program
```

This results in all the code in that module being linked into the new section. Rebuild this project by using menu item Build>>Build All and note the addition of the section at 010000h in the link window.

It is also possible to link just one function or one section of a C module. To do this the same statement (#pragma SECTION program expanded_program) is used at the beginning of the code that will be added to the new section. At the end of the function or the functions to be linked the SECTION statement below is used to force the linker to use the default program section:

```
; #pragma SECTION program program
```

The FlashLEDs function from the flashleds.c module has been added to the expanded program space using this method.

This example uses the simulator to examine the result of the link process. Use the session pull-down from the toolbar to change from the 'DefaultSession' to the 'SessionM16C_R8C_Simulator' to view the linked addresses of the code.

Website and Support

Renesas Technology Website

- <http://www.renesas.com/>
-

Inquiries

- <http://www.renesas.com/inquiry>
- csc@renesas.com (Global Support)

Revision Record

Rev.	Date	Description	
		Page	Summary
1.00	Feb.20.09	—	First edition issued

Notes regarding these materials

1. This document is provided for reference purposes only so that Renesas customers may select the appropriate Renesas products for their use. Renesas neither makes warranties or representations with respect to the accuracy or completeness of the information contained in this document nor grants any license to any intellectual property rights or any other rights of Renesas or any third party with respect to the information in this document.
2. Renesas shall have no liability for damages or infringement of any intellectual property or other rights arising out of the use of any information in this document, including, but not limited to, product data, diagrams, charts, programs, algorithms, and application circuit examples.
3. You should not use the products or the technology described in this document for the purpose of military applications such as the development of weapons of mass destruction or for the purpose of any other military use. When exporting the products or technology described herein, you should follow the applicable export control laws and regulations, and procedures required by such laws and regulations.
4. All information included in this document such as product data, diagrams, charts, programs, algorithms, and application circuit examples, is current as of the date this document is issued. Such information, however, is subject to change without any prior notice. Before purchasing or using any Renesas products listed in this document, please confirm the latest product information with a Renesas sales office. Also, please pay regular and careful attention to additional and different information to be disclosed by Renesas such as that disclosed through our website. (<http://www.renesas.com>)
5. Renesas has used reasonable care in compiling the information included in this document, but Renesas assumes no liability whatsoever for any damages incurred as a result of errors or omissions in the information included in this document.
6. When using or otherwise relying on the information in this document, you should evaluate the information in light of the total system before deciding about the applicability of such information to the intended application. Renesas makes no representations, warranties or guarantees regarding the suitability of its products for any particular application and specifically disclaims any liability arising out of the application and use of the information in this document or Renesas products.
7. With the exception of products specified by Renesas as suitable for automobile applications, Renesas products are not designed, manufactured or tested for applications or otherwise in systems the failure or malfunction of which may cause a direct threat to human life or create a risk of human injury or which require especially high quality and reliability such as safety systems, or equipment or systems for transportation and traffic, healthcare, combustion control, aerospace and aeronautics, nuclear power, or undersea communication transmission. If you are considering the use of our products for such purposes, please contact a Renesas sales office beforehand. Renesas shall have no liability for damages arising out of the uses set forth above.
8. Notwithstanding the preceding paragraph, you should not use Renesas products for the purposes listed below:
 - (1) artificial life support devices or systems
 - (2) surgical implantations
 - (3) healthcare intervention (e.g., excision, administration of medication, etc.)
 - (4) any other purposes that pose a direct threat to human life

Renesas shall have no liability for damages arising out of the uses set forth in the above and purchasers who elect to use Renesas products in any of the foregoing applications shall indemnify and hold harmless Renesas Technology Corp., its affiliated companies and their officers, directors, and employees against any and all damages arising out of such applications.
9. You should use the products described herein within the range specified by Renesas, especially with respect to the maximum rating, operating supply voltage range, movement power voltage range, heat radiation characteristics, installation and other product characteristics. Renesas shall have no liability for malfunctions or damages arising out of the use of Renesas products beyond such specified ranges.
10. Although Renesas endeavors to improve the quality and reliability of its products, IC products have specific characteristics such as the occurrence of failure at a certain rate and malfunctions under certain use conditions. Please be sure to implement safety measures to guard against the possibility of physical injury, and injury or damage caused by fire in the event of the failure of a Renesas product, such as safety design for hardware and software including but not limited to redundancy, fire control and malfunction prevention, appropriate treatment for aging degradation or any other applicable measures. Among others, since the evaluation of microcomputer software alone is very difficult, please evaluate the safety of the final products or system manufactured by you.
11. In case Renesas products listed in this document are detached from the products to which the Renesas products are attached or affixed, the risk of accident such as swallowing by infants and small children is very high. You should implement safety measures so that Renesas products may not be easily detached from your products. Renesas shall have no liability for damages arising out of such detachment.
12. This document may not be reproduced or duplicated, in any form, in whole or in part, without prior written approval from Renesas.
13. Please contact a Renesas sales office if you have any questions regarding the information contained in this document, Renesas semiconductor products, or if you have any other inquiries.