

RX Family

R01AN2295EJ0120

Rev.1.20

Jun 1, 2020

Sample Program using USB Host Mass Storage Class Driver (HMSC) for USB Mini Firmware to communicate via USB with MSC device Firmware Integration Technology

Introduction

This document describes the following sample firmware: USB Host Mass Storage Class Driver for USB Mini Firmware using Firmware Integration Technology. The sample firmware is referred to below as the HMSC.

When developing an actual software, be sure to use the “USB Basic Mini Host and Peripheral Driver (USB Mini Firmware) using Firmware Integration Technology Application Note” (Document number: R01AN2166) together with the user’s manual for each MCU (Hardware). In addition, also refer to the "USB Host Mass Storage Class Driver (HMSC) for USB Mini Firmware using Firmware Integration Technology Application Note” (Document number: R01AN2169), if necessary. “USB Basic Mini Host and Peripheral Driver (USB Mini Firmware) using Firmware Integration Technology Application Note” (Document number: R01AN2166) is located in the "reference_documents" folder within the package.

Target Device

RX111 Group
RX113 Group
RX231 Group
RX23W Group

The operation of this program has been confirmed using the Renesas Starter Kits (RSK) or the Renesas Solution Starter Kit (RSSK).

Contents

1. Introduction	2
2. Software Configuration	4
3. Setup	5
4. Sample Application	9
5. Class Driver	12
6. Using RI600V4 project with CS+	13
7. Using the e² studio project with CS+	18

1. Introduction

1.1 Functions

The HMSC was built using the USB mass storage class Bulk-Only Transport (BOT) protocol. When used in combination with a file system and storage device driver, it enables communication with USB mass storage devices that support BOT.

The HMSC provides the following functionalities:

- Support for USB mass storage class BOT.
- Support for the SFF-8070i (ATAPI) USB mass storage subclass.

1.2 FIT Module Configuration

The HMSC comprises the following FIT modules and a sample application:

Table 1-1 FIT Module Configuration

FIT Module	Folder Name
RX Family Board Support Package Module Using Firmware Integration Technology	r_bsp
RX Family USB Basic Mini Host and Peripheral Driver (USB Mini Firmware) using Firmware Integration Technology	r_usb_basic_mini
RX Family USB Host Mass Storage Class Driver (HMSC) for USB Mini Firmware using Firmware Integration Technology	r_usb_hmsc_mini
RX Family DTC Module Using Firmware Integration Technology	r_dtc_rx
RX Family DMA Controller DMACA Control Module Firmware Integration Technology	r_dmaca_rx
RX Family Open Source FAT File System [M3S-TFAT-Tiny] Module Firmware Integration Technology	r_tfat_rx
RX Family M3S-TFAT-Tiny Memory Driver Interface Module Firmware Integration Technology	r_tfat_driver_rx
RX Family CMT Module Using Firmware Integration Technology	r_cmt_rx
RX Family System Timer Module Firmware Integration Technology	r_sys_time_rx

Refer to the related documentation for details of each FIT module. Note that the latest versions of the FIT modules used by the sample firmware are available for download from the following website:

Renesas Electronics website: <http://www.renesas.com/>

1.3 Note

This driver is not guaranteed to provide USB communication operation. The customer should verify operation when utilizing it in a system and confirm the ability to connect to a variety of different types of devices.

1.4 Operating Confirmation Environment

The operating confirmation environment for the HMSC is described below:

Table 1-2 Operation Confirmation Environment

Item	Contents
C compiler	Renesas Electronics C/C++ compiler for RX Family V.3.02.00 (The option "-lang=C99" is added to the default setting of IDE)
	GCC for Renesas RX 8.3.0.201904 (The option "-std=gnu99" is added to the default setting of IDE)
	IAR C/C++ Compiler for Renesas RX version 4.14.1
Real-Time OS	FreeRTOS V.10.0.0 RI600V4 V.1.06
Endian	Little Endian, Big Endian
USB Driver Revision Number	Rev.1.20
Using Board	Renesas Starter Kit for RX111 Renesas Starter Kit for RX113 Renesas Starter Kit for RX231 Renesas Solution Starter Kit for RX23W

2. Software Configuration

2.1 Module Configuration

The term host device class driver (HDCD) refers collectively to the host mass storage device driver (HMSDD) and the USB host mass storage class driver (HMSCD).

Figure 2-1 shows the module configuration of the HMSC, and Table 2-1 lists the functions of the modules.

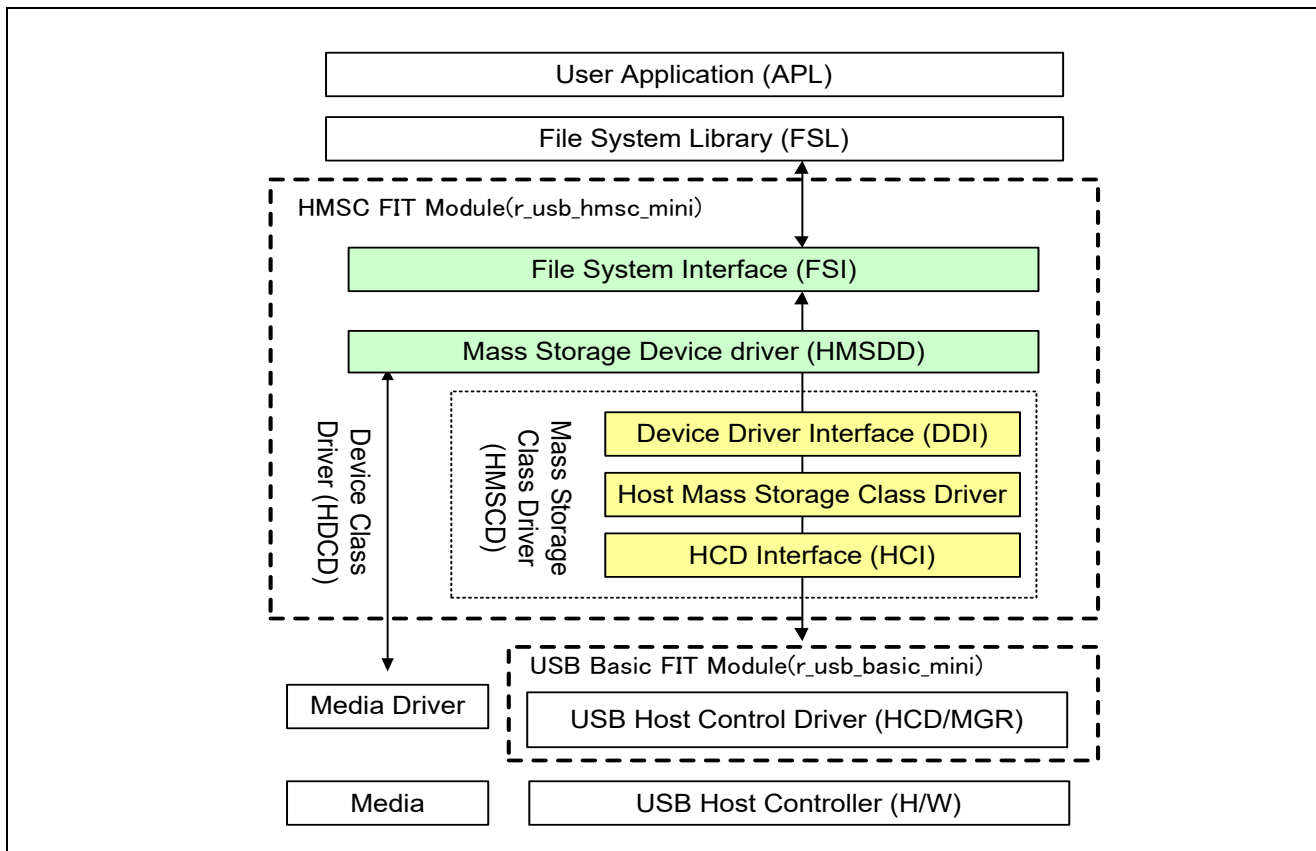


Figure 2-1 Module Configuration

Table 2-1 Function of Modules

Module Name	Function
APL	Sample application program <ul style="list-style-type: none"> Uses the FSL function to implement storage functionality.
FSL	FAT File System Library
FSI	Interface function between FSL and HMSDD
HMSDD	Mass Storage Device Driver
DDI	Interface function between HMSDD and HMSCD
HMSCD	Mass Storage Class Driver <ul style="list-style-type: none"> Appends the BOT protocol to storage commands to send requests to the HCD. Performs BOT sequence management.
HCI	Interface function between HMSCD and HCD
HCD	USB Host Control Driver
Media Driver	Storage Driver

3. Setup

3.1 Hardware

3.1.1 Example Operating Environment

Figure 3-1 shows an example operating environment for the HMSC. Refer to the associated instruction manuals for details on setting up the evaluation board and using the emulator, etc.

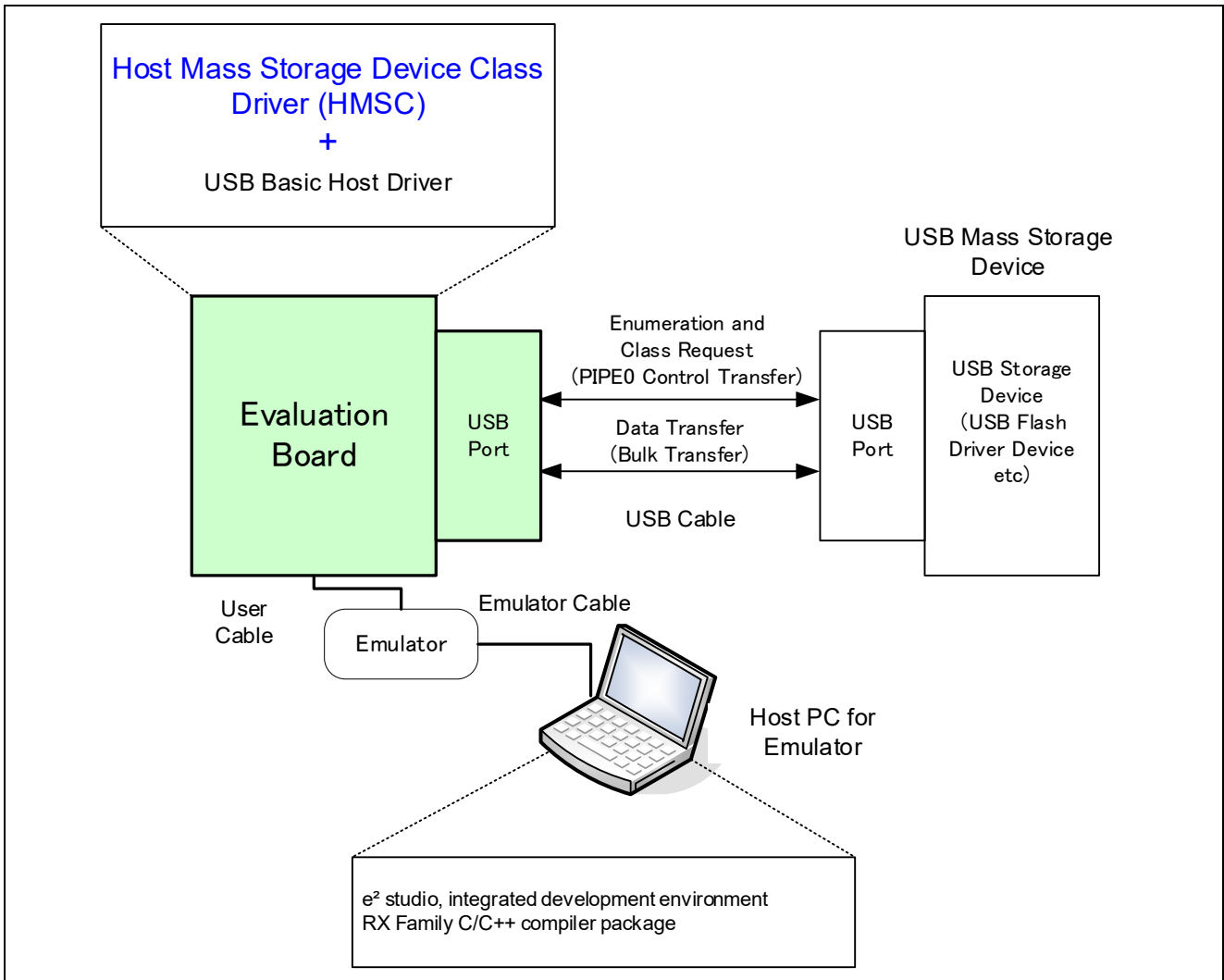


Figure 3-1 Example Operating Environment

Table 3-1 shows the evaluation board on which operation has been confirmed.

Table 3-1 Evaluation Board on which HMSC Operation has been verified

MCU	Evaluation Board
RX111	RSKRX111
RX113	RSKRX113
RX231	RSKRX231
RX23W	RSSKRX231

3.1.2 RSK / RSSK Setting

It is necessary to set RSK/RSSK to operate in the host mode. Please refer to the following.

Table 3-2 RSK / RSSK Setting

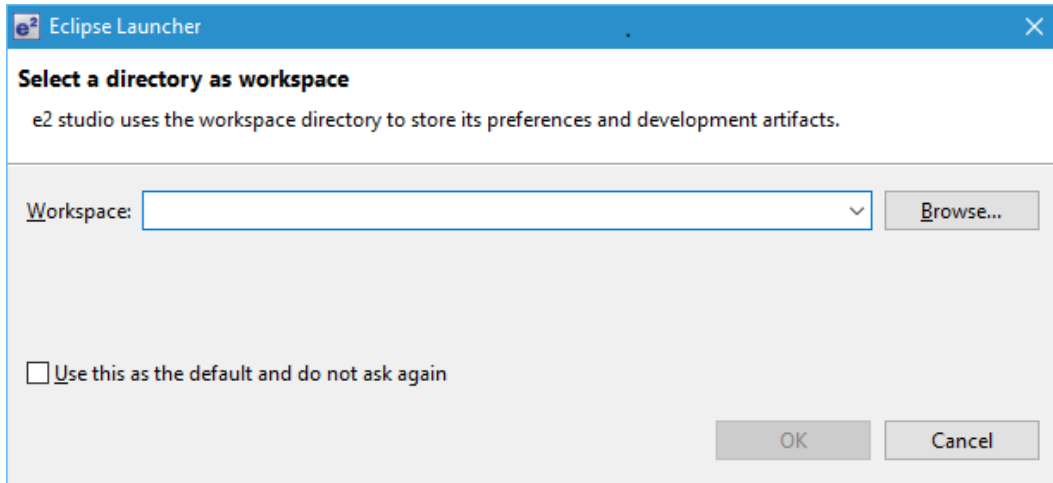
RSK / RSSK	Jumper Setting
RSKRX111	J12: Shorted Pin1-2
RSKRX113	J12: Shorted Pin1-2
RSKRX231	J15: Shorted Pin1-2
RSSKRX23W	J5: Shorted Pin2-3

Note:

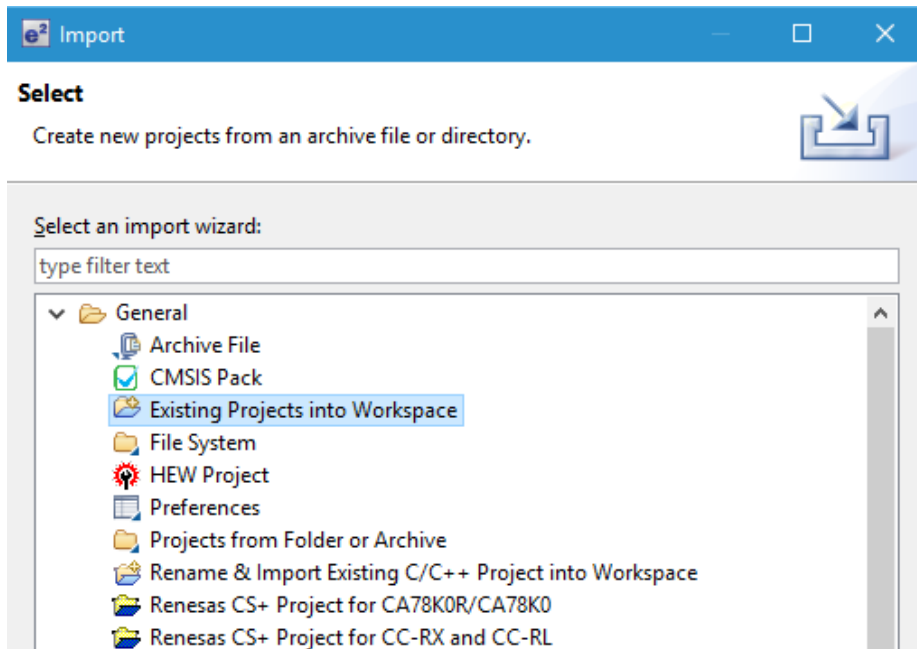
For the detail of RSK/RSSK setting, refer to the user's manual of RSK/RSSK.

3.2 Software

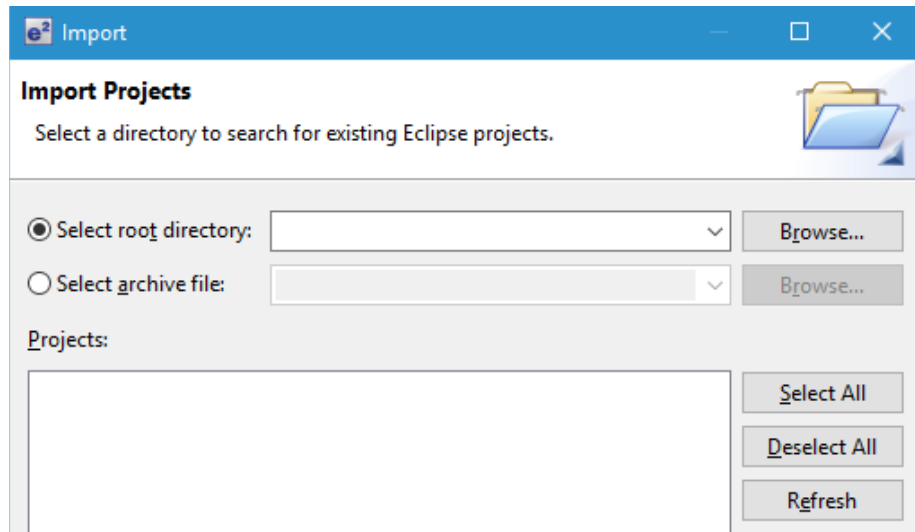
- 1) Setup e² studio
 - a) Start e² studio
 - b) If you start up e² studio at first, the following dialog is displayed. Specify the folder to store the project in this dialog.



- 2) Import the project to the workspace
 - a) Select [File] > [Import]
 - b) Select [General] => [Existing Projects into Workspace]



- c) Select the root directory of the project, that is, the folder containing the “.cproject” file.



- d) Click “Finish”.

You have now imported the project into the workspace. Note that you can import other projects into the same workspace.

- 3) Generate the binary target program by clicking the “Build” button.
- 4) Connect the target board to the debug tool and download the executable. The target is run by clicking the “Run” button.

4. Sample Application

4.1 Application Specifications

The main functions of the APL are as follows:

1. Performs enumeration and drive recognition processing on MSC devices.
2. After the above processing finishes, the APL writes the file “hmscdemo.txt” to the MSC device once.
3. After writing the above file, the APL repeatedly reads the file “hmscdemo.txt.” It continues to read the file repeatedly until the switch is pressed again.

[Note]

When an MSC device on which the file “hmscdemo.txt” is stored is connected to the RSK/RSSK board and the above steps are performed, “hmscdemo.txt” will be overwritten.

4.2 Application Processing (for Non-OS)

The application comprises two parts: initial settings and main loop. An overview of the processing in these two parts is provided below.

4.2.1 Initial Setting

Initial settings consist of MCU pin settings, USB driver settings, and initial settings to the USB controller.

4.2.2 Main Loop

This main loop controls the program using the return values from the *R_USB_GetEvent* function and state variables. The return values of the *R_USB_GetEvent* function are used for the USB event management such as attach and detach. File write/read is performed on the MSC device based on the state checked with the state variable.

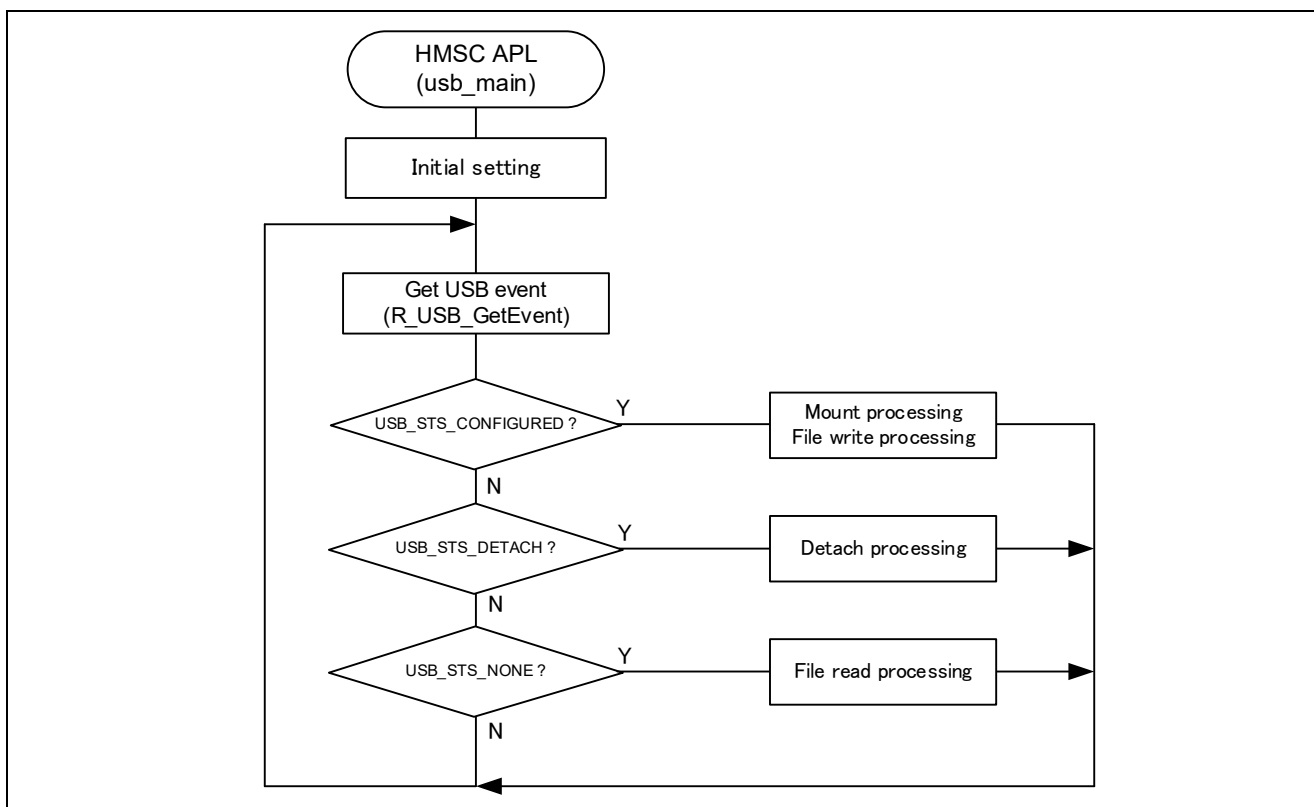


Figure 4-1 Main Loop

1. Mount processing and File write processing (USB_STS_CONFIGURED)

When the *R_USB_GetEvent* function is called after the MSC device is attached to the RSK/RSSK and the enumeration and drive recognition processing is completed, *USB_STS_CONFIGURED* is set for the return value. After the application program checks that *USB_STS_CONFIGURED* has been set for the return value and performs the Mount processing and the file write processing, then it assigns *STATE_FILE_READ* to the state management variable to perform the file write/read processing.

2. File read processing (USB_STS_NONE)

When the *R_USB_GetEvent* function is called with no USB-related event, *USB_STS_NONE* is set for the return value. The application program checks that *USB_STS_NONE* has been set for the return value and then performs the following file read processing.

(1). File read processing

Performs the file read processing on an MSC device using the FAT API. After completion of the file read, the file read processing is continued until the MSC is detached.

3. Detach processing (USB_STS_DETACH)

If the *R_USB_GetEvent* is called after the MSC device has been detached from the RSK/RSSK, then *USB_STS_DETACH* will be the return value. After the application program checks that *USB_STS_DETACH* has been set for the return value, then it assigns *STATE_DETACH* to the state variable.

4.3 Application Processing (for RTOS)

This application has two tasks. An overview of the processing in these two tasks is provided below.

4.3.1 usb_apl_task

1. After the RSK starts up, MCU pin setting, USB controller initialization, and application program initialization are performed.
2. The MSC device is attached to the RSK, and when enumeration and drive recognition processing have completed, the USB driver calls the callback function (*usb_apl_callback*). In the callback function (*usb_apl_callback*), the application task is notified of the USB completion event using the FreeRTOS functionality.
3. In the application task, information regarding the USB completion event about which notification was received from the callback function is retrieved using the real-time OS functionality.
4. If the USB completion event (the *event* member of the *usb_ctrl_t* structure) retrieved in step 2 above is *USB_STS_CONFIGURED* then, based on the USB completion event, mounting of the MSC device and file writing to the MSC device are performed.
5. If the USB completion event (the *event* member of the *usb_ctrl_t* structure) retrieved in step 2 above is *USB_STS_DETACH*, the application initializes the variables for state management.

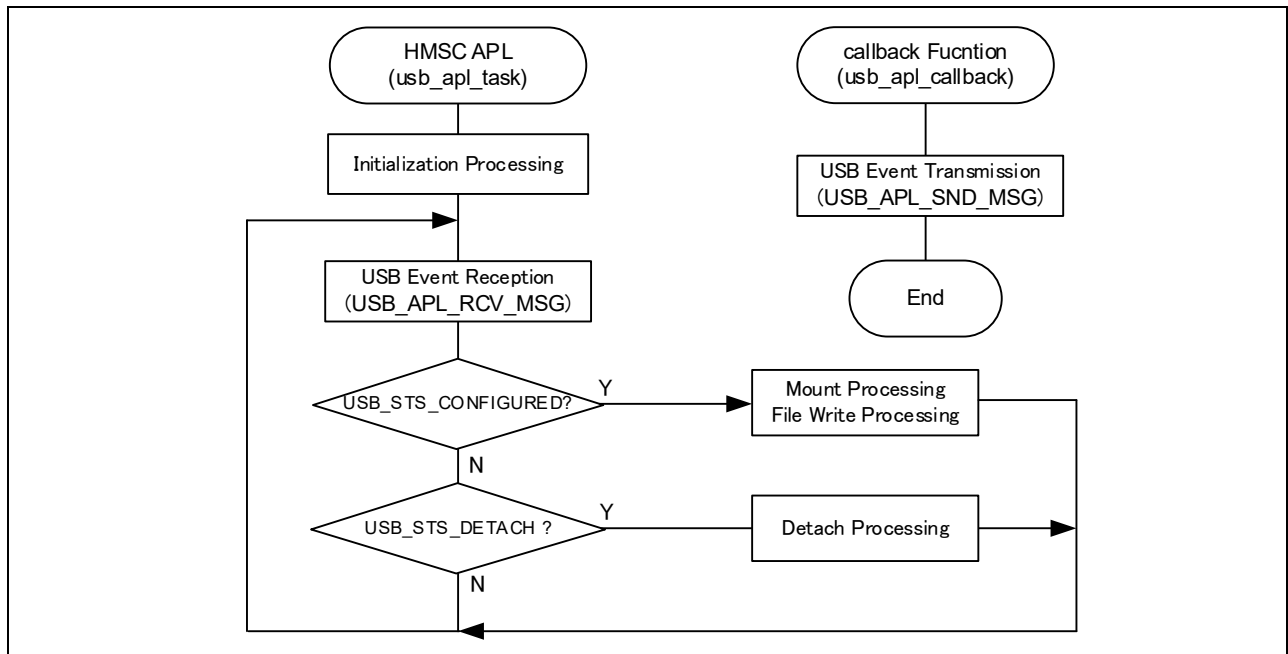


Figure 4-2 usb_apl_task

4.3.2 file_read_task

Of the application tasks (*usb_apl_task* and *file_read_task*), *file_read_task* is processed while *usb_apl_task* is in the wait state. This task performs file read processing on the file that was written to the MSC device (hmscdemo.txt).

5. Class Driver

5.1 Class Request

Table 5-1 shows the class requests supported by HMSC.

Table 5-1 Class Request

Request	Description
GetMaxLun	Gets the maximum number of units that are supported.
MassStorageReset	Cancels a protocol error.

5.2 Storage Command

The HMSC supports storage commands necessary to access USB mass storage devices as well as sample storage commands.

The HMSC supports the SFF-8070i (ATAPI) USB mass storage class.

Table 5-2 Storage Command

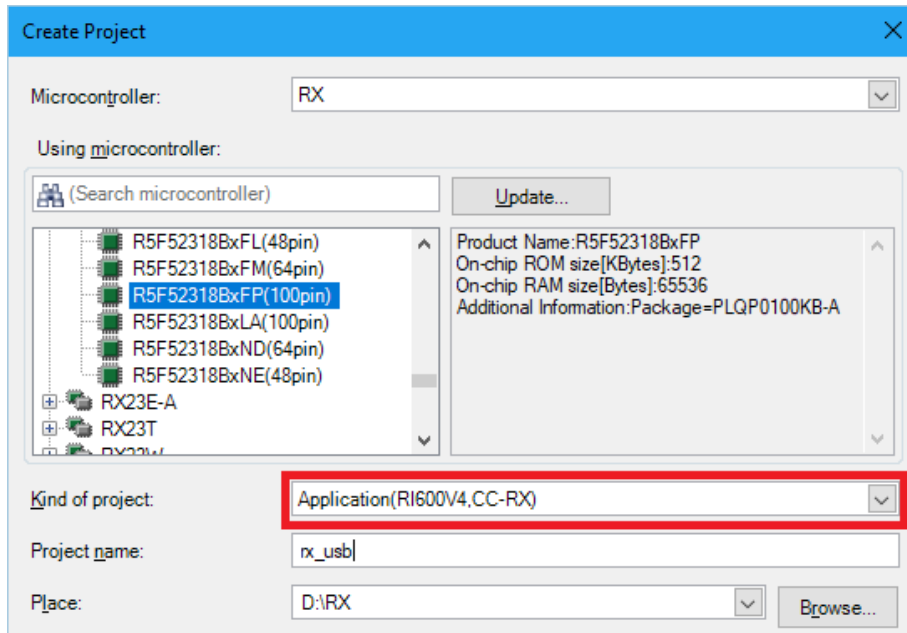
Command	Code	Description	Supported
TEST_UNIT_READY	0x00	Verify state of peripheral device	YES
REQUEST_SENSE	0x03	Obtain peripheral device state	YES
FORMAT_UNIT	0x04	Format logic unit	NO
INQUIRY	0x12	Obtain logic unit parameter information	YES
MODE_SELECT6	0x15	Set parameters	NO
MODE_SENSE6	0x1A	Obtain logic unit parameters	NO
START_STOP_UNIT	0x1B	Enable/disable logic unit access	NO
PREVENT_ALLOW	0x1E	Enable/disable media removal	YES
READ_FORMAT_CAPACITY	0x23	Obtain format capacity	YES
READ_CAPACITY	0x25	Obtain logic unit capacity information	YES
READ10	0x28	Read data	YES
WRITE10	0x2A	Write data	YES
SEEK	0x2B	Move to logic block address	NO
WRITE_AND_VERIFY	0x2E	Write and verify data	NO
VERIFY10	0x2F	Verify data	NO
MODE_SELECT10	0x55	Set parameters	YES
MODE_SENSE10	0x5A	Obtain logic unit parameters	YES

6. Using RI600V4 project with CS+

The RI600V4 project in the package does not support CS+. The user needs to create a project for CS+ according to the following procedure when using RI600V4 project on CS+.

6.1 New Project Creation

Select "Application(RI600V4, CC-RX)" for the Kind of project.

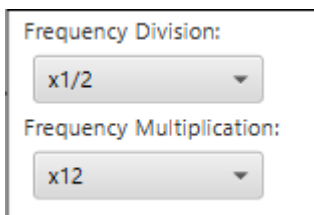


6.2 Launch Smart Configurator

1. Clock Setting (Select "Clocks" tab)

Set the related clock so that "48MHz" is set to UCLK (USB clock).

The following is a setting example when using the oscillator(8MHz).



2. Component Setting (Select "Components" tab)

(1). Import the FIT module

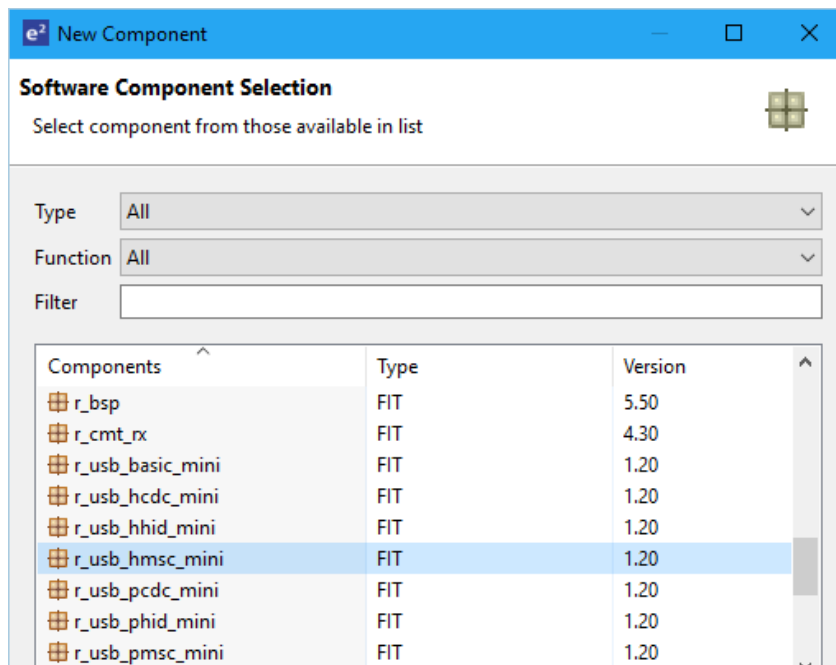
Select the following FIT modules and press the "Finish" button.

- a. *r_usb_hmsc_mini*
- b. *r_tfat_rx*
- c. *r_tfat_driver_rx*
- d. *r_sys_timer_rx*
- e. *r_cmt_rx*

Note:

- a. The *r_usb_basic_mini* module is also imported at the same time.

- b. Select the `r_dtc_rx / r_dmaca_rx` module when using the DTC/DMA.

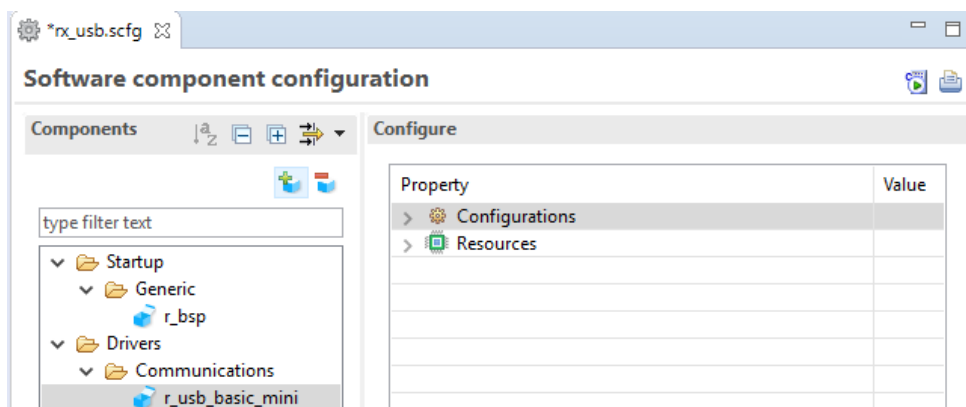


(2). Configuration Setting

- a. `r_bsp`

Change the heap size when using DTC transfer. For the setting value, refer to the documentation for DTC FIT module.

- b. `r_usb_basic_mini`



- (a). Configurations

Set each item according to the user system.
 For the detail of each item, refer to chapter "Configuration" in *USB Basic Mini Host and Peripheral Driver Firmware Integration Technology* application note (Document number: R01AN2166).

- (b). Resources

- Check the following check box.
- i. `USBx_VBUSEN` pin
 - ii. `USBx_OVRCURA` pin or `USBx_OVRCURB` pin

Property	Value
> Configurations	
> Resources	
> USB	
USB0_HOST	<input checked="" type="checkbox"/>
USB0_VBUSEN Pin	<input checked="" type="checkbox"/> Used
USB0_OVRCURA Pin	<input checked="" type="checkbox"/> Used
USB0_OVRCURB Pin	<input type="checkbox"/> Unused
USB0_PERI	<input type="checkbox"/>
USB0_VBUS Pin	<input type="checkbox"/> Unused

c. r_usb_tfat_driver_rx

- (a). Number of USB mini drives

Set "1" to "Number of USB mini drives".

- (b). Memory Drive 0

Set "USB mini" to "Memory Driver 0".

- (c). RI600V4 Mutex ID For Memory Drive 0

Set "1" to " RI600V4 Mutex ID For Memory Drive 0".

> Configurations	
# Number of USB drives	0
# Number of SD memory card drives	0
# Number of USB mini drives	1
# Memory Drive 0	USB mini
# Memory Drive 1	None
# Memory Drive 2	None
# Memory Drive 3	None
# Memory Drive 4	None
# Memory Drive 5	None
# Memory Drive 6	None
# Memory Drive 7	None
# Memory Drive 8	None
# Memory Drive 9	None
# RI600V4 Mutex ID For Memory Drive 0	1
# RI600V4 Mutex ID For Memory Drive 1	0
# RI600V4 Mutex ID For Memory Drive 2	0

3. Pin Setting (Select "Pins" tab)

Select the port for USB pin match the user system.

Hardware Resource		Pin Function				
Type filter text		Enabled	Function	Assignment	Pin Number	Direction
RIICO		<input type="checkbox"/>	USB0_DM	Not assigned	Not assigned	None
Serial peripheral interface		<input type="checkbox"/>	USB0_DP	Not assigned	Not assigned	None
RSPIO		<input type="checkbox"/>	USB0_EXICEN	Not assigned	Not assigned	None
Serial sound interface		<input type="checkbox"/>	USB0_ID	Not assigned	Not assigned	None
CAN module		<input checked="" type="checkbox"/>	USB0_OVRCURA	P14/MTIOC3A/MTCLKA/TMRI2/TIOCB5/TCLKA/C...	32	I
SD host interface		<input type="checkbox"/>	USB0_OVRCURB	Not assigned	Not assigned	None
USB 2.0 host/function module		<input type="checkbox"/>	USB0_VBUS	Not assigned	Not assigned	None
12-bit A/D converter		<input checked="" type="checkbox"/>	USB0_VBUSEN	P32/MTIOC0C/TMO3/TIOCC0/RTCOUT/RTCIC2/T...	18	O
S12AD0		<input type="checkbox"/>	VCC_USB	VCC_USB	35	-
12-bit D/A converter						
Comparator B						


4. Other Setting

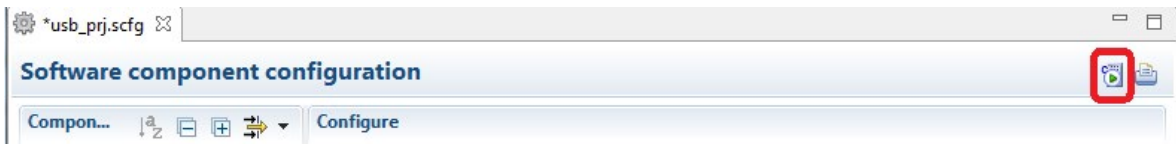
Set "1"(numeric value) to the `FF_VOLUMES` macro in the "`r_tfat_rx\src\ffconf.h`" file.

Example)

```
#define FF_VOLUMES 4
```

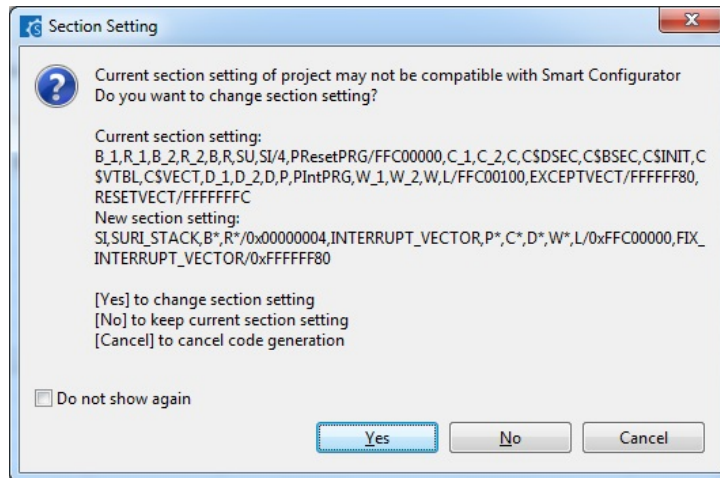
5. Generate Code

The Smart Configurator generates source codes for USB FIT module and USB pin setting in "`<ProjectDir>\src\smc_gen`" folder by clicking on the [ (Generate Code)] button.



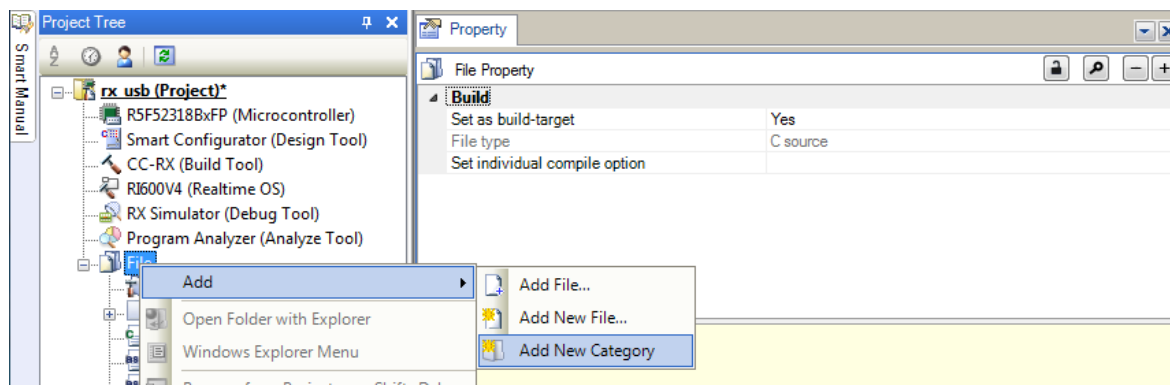
Note:

Select "Yes" if the following dialog box is displayed.



6.3 Add the application program and the configuration file

1. Copy the *demo_src* folder in this package to the "*<ProjectDir>%src*" folder.
2. Copy the RI600V4 configuration file (.cfg file) to "*<ProjectDir>*" folder.
3. Select "File" in the "Project Tree" and click the right button. Select [Add] → [Add New Category] and create the category to store the application program. Then select [Add File] and register the application program and the configuration file which are copied at the above 2.



Note:

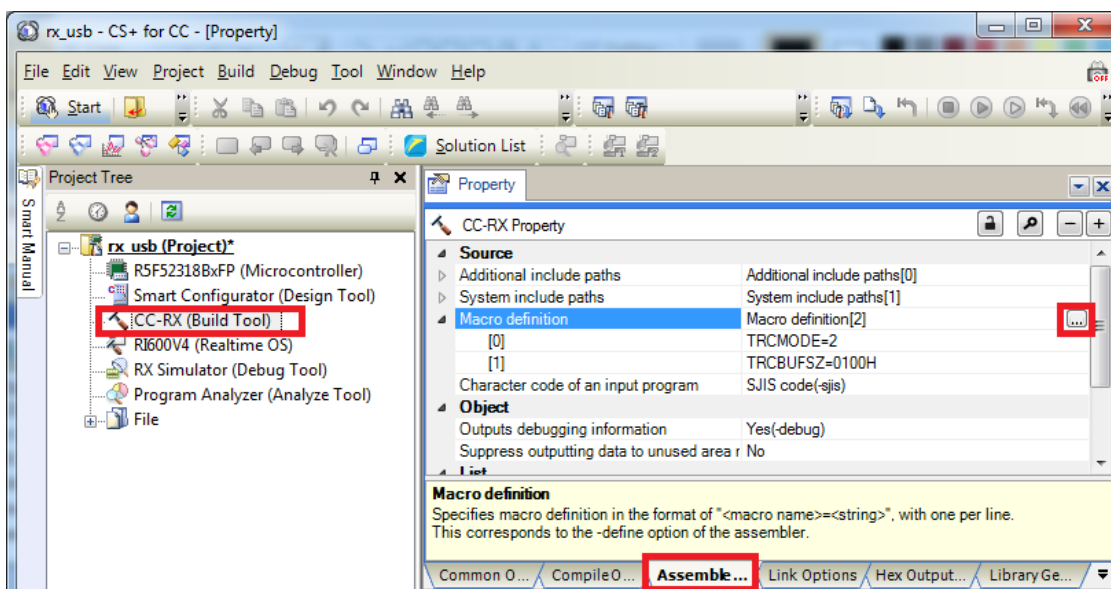
Remove the "task.c" file and "sample.cfg" created in "*<ProjectDir>*" folder by CS+.

6.4 Remote Macro Definition

Remove these macros since the following macros is defined in the new created project.

Select [CC-RX(Build Tool)] → [Assemble Options] tab, remove the following macros.

1. TRCMODE = 2
2. TRCBUSZ = 0100H



6.5 Build Execution

Execute the build and generate the binary target program.

7. Using the e² studio project with CS+

The HMSC contains a project only for e² studio. When you use the HMSC with CS+, import the project to CS+ by following procedures.

[Note]

1. Uncheck the checkbox Backup the project composition files after conversion in Project Convert Settings window.
2. The following method is not supported when using RI600V4. Refer to chapter 6, Using RI600V4 project with CS+.

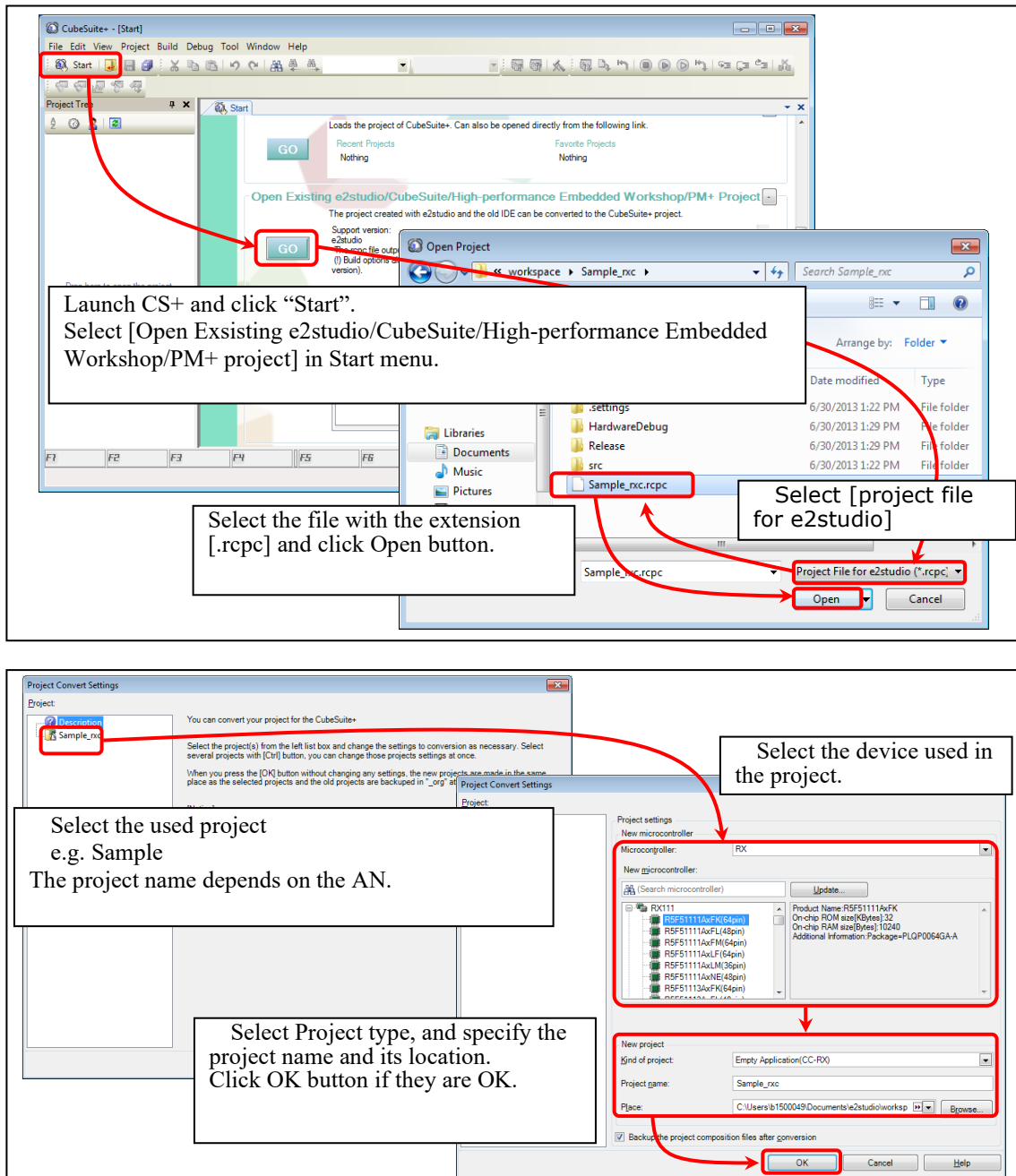


Figure 7-1 Using the e² studio project with CS+

Website and Support

Renesas Electronics Website

<http://www.renesas.com/>

Inquiries

<http://www.renesas.com/inquiry>

All trademarks and registered trademarks are the property of their respective owners.

Revision Record

Rev.	Date	Description	
		Page	Summary
1.00	Dec 1, 2014	—	First edition issued
1.01	Jun 1, 2015	—	RX231 is added in Target Device.
1.02	Dec 28, 2015	—	Upgrading of this USB driver by upgrading of "USB Basic Mini Firmware (R01AN2166)".
1.10	Nov 30, 2018	—	<ol style="list-style-type: none"> 1. The following chapter has been added. <ol style="list-style-type: none"> (1). 3.1.2 RSK/RSSK Setting 2. The following chapter has been changed. <ol style="list-style-type: none"> (1). 4. Sample Application
1.12	Jun 30, 2019	—	RX23W is added in Target Device.
1.20	Jun 1, 2020	—	Supported the real-time OS.

General Precautions in the Handling of Microprocessing Unit and Microcontroller Unit Products

The following usage notes are applicable to all Microprocessing unit and Microcontroller unit products from Renesas. For detailed usage notes on the products covered by this document, refer to the relevant sections of the document as well as any technical updates that have been issued for the products.

1. Handling of Unused Pins

Handle unused pins in accordance with the directions given under Handling of Unused Pins in the manual.

- The input pins of CMOS products are generally in the high-impedance state. In operation with an unused pin in the open-circuit state, extra electromagnetic noise is induced in the vicinity of LSI, an associated shoot-through current flows internally, and malfunctions occur due to the false recognition of the pin state as an input signal become possible. Unused pins should be handled as described under Handling of Unused Pins in the manual.

2. Processing at Power-on

The state of the product is undefined at the moment when power is supplied.

- The states of internal circuits in the LSI are indeterminate and the states of register settings and pins are undefined at the moment when power is supplied.
In a finished product where the reset signal is applied to the external reset pin, the states of pins are not guaranteed from the moment when power is supplied until the reset process is completed.
In a similar way, the states of pins in a product that is reset by an on-chip power-on reset function are not guaranteed from the moment when power is supplied until the power reaches the level at which resetting has been specified.

3. Prohibition of Access to Reserved Addresses

Access to reserved addresses is prohibited.

- The reserved addresses are provided for the possible future expansion of functions. Do not access these addresses; the correct operation of LSI is not guaranteed if they are accessed.

4. Clock Signals

After applying a reset, only release the reset line after the operating clock signal has become stable. When switching the clock signal during program execution, wait until the target clock signal has stabilized.

- When the clock signal is generated with an external resonator (or from an external oscillator) during a reset, ensure that the reset line is only released after full stabilization of the clock signal. Moreover, when switching to a clock signal produced with an external resonator (or by an external oscillator) while program execution is in progress, wait until the target clock signal is stable.

5. Differences between Products

Before changing from one product to another, i.e. to a product with a different part number, confirm that the change will not lead to problems.

- The characteristics of Microprocessing unit or Microcontroller unit products in the same group but having a different part number may differ in terms of the internal memory capacity, layout pattern, and other factors, which can affect the ranges of electrical characteristics, such as characteristic values, operating margins, immunity to noise, and amount of radiated noise. When changing to a product with a different part number, implement a system-evaluation test for the given product.

Notice

1. Descriptions of circuits, software and other related information in this document are provided only to illustrate the operation of semiconductor products and application examples. You are fully responsible for the incorporation or any other use of the circuits, software, and information in the design of your product or system. Renesas Electronics disclaims any and all liability for any losses and damages incurred by you or third parties arising from the use of these circuits, software, or information.
 2. Renesas Electronics hereby expressly disclaims any warranties against and liability for infringement or any other claims involving patents, copyrights, or other intellectual property rights of third parties, by or arising from the use of Renesas Electronics products or technical information described in this document, including but not limited to, the product data, drawings, charts, programs, algorithms, and application examples.
 3. No license, express, implied or otherwise, is granted hereby under any patents, copyrights or other intellectual property rights of Renesas Electronics or others.
 4. You shall not alter, modify, copy, or reverse engineer any Renesas Electronics product, whether in whole or in part. Renesas Electronics disclaims any and all liability for any losses or damages incurred by you or third parties arising from such alteration, modification, copying or reverse engineering.
 5. Renesas Electronics products are classified according to the following two quality grades: "Standard" and "High Quality". The intended applications for each Renesas Electronics product depends on the product's quality grade, as indicated below.
"Standard": Computers; office equipment; communications equipment; test and measurement equipment; audio and visual equipment; home electronic appliances; machine tools; personal electronic equipment; industrial robots; etc.
"High Quality": Transportation equipment (automobiles, trains, ships, etc.); traffic control (traffic lights); large-scale communication equipment; key financial terminal systems; safety control equipment; etc.
Unless expressly designated as a high reliability product or a product for harsh environments in a Renesas Electronics data sheet or other Renesas Electronics document, Renesas Electronics products are not intended or authorized for use in products or systems that may pose a direct threat to human life or bodily injury (artificial life support devices or systems; surgical implantations; etc.), or may cause serious property damage (space system; undersea repeaters; nuclear power control systems; aircraft control systems; key plant systems; military equipment; etc.). Renesas Electronics disclaims any and all liability for any damages or losses incurred by you or any third parties arising from the use of any Renesas Electronics product that is inconsistent with any Renesas Electronics data sheet, user's manual or other Renesas Electronics document.
 6. When using Renesas Electronics products, refer to the latest product information (data sheets, user's manuals, application notes, "General Notes for Handling and Using Semiconductor Devices" in the reliability handbook, etc.), and ensure that usage conditions are within the ranges specified by Renesas Electronics with respect to maximum ratings, operating power supply voltage range, heat dissipation characteristics, installation, etc. Renesas Electronics disclaims any and all liability for any malfunctions, failure or accident arising out of the use of Renesas Electronics products outside of such specified ranges.
 7. Although Renesas Electronics endeavors to improve the quality and reliability of Renesas Electronics products, semiconductor products have specific characteristics, such as the occurrence of failure at a certain rate and malfunctions under certain use conditions. Unless designated as a high reliability product or a product for harsh environments in a Renesas Electronics data sheet or other Renesas Electronics document, Renesas Electronics products are not subject to radiation resistance design. You are responsible for implementing safety measures to guard against the possibility of bodily injury, injury or damage caused by fire, and/or danger to the public in the event of a failure or malfunction of Renesas Electronics products, such as safety design for hardware and software, including but not limited to redundancy, fire control and malfunction prevention, appropriate treatment for aging degradation or any other appropriate measures. Because the evaluation of microcomputer software alone is very difficult and impractical, you are responsible for evaluating the safety of the final products or systems manufactured by you.
 8. Please contact a Renesas Electronics sales office for details as to environmental matters such as the environmental compatibility of each Renesas Electronics product. You are responsible for carefully and sufficiently investigating applicable laws and regulations that regulate the inclusion or use of controlled substances, including without limitation, the EU RoHS Directive, and using Renesas Electronics products in compliance with all these applicable laws and regulations. Renesas Electronics disclaims any and all liability for damages or losses occurring as a result of your noncompliance with applicable laws and regulations.
 9. Renesas Electronics products and technologies shall not be used for or incorporated into any products or systems whose manufacture, use, or sale is prohibited under any applicable domestic or foreign laws or regulations. You shall comply with any applicable export control laws and regulations promulgated and administered by the governments of any countries asserting jurisdiction over the parties or transactions.
 10. It is the responsibility of the buyer or distributor of Renesas Electronics products, or any other party who distributes, disposes of, or otherwise sells or transfers the product to a third party, to notify such third party in advance of the contents and conditions set forth in this document.
 11. This document shall not be reprinted, reproduced or duplicated in any form, in whole or in part, without prior written consent of Renesas Electronics.
 12. Please contact a Renesas Electronics sales office if you have any questions regarding the information contained in this document or Renesas Electronics products.
- (Note 1) "Renesas Electronics" as used in this document means Renesas Electronics Corporation and also includes its directly or indirectly controlled subsidiaries.
(Note 2) "Renesas Electronics product(s)" means any product developed or manufactured by or for Renesas Electronics.

(Rev.4.0-1 November 2017)



SALES OFFICES

Renesas Electronics Corporation

<http://www.renesas.com>

Refer to "<http://www.renesas.com/>" for the latest and detailed information.

Renesas Electronics Corporation

TOYOSU FORESIA, 3-2-24 Toyosu, Koto-ku, Tokyo 135-0061, Japan

Renesas Electronics America Inc. Milpitas Campus

1001 Murphy Ranch Road, Milpitas, CA 95035, U.S.A.

Tel: +1-408-432-8888, Fax: +1-408-434-5351

Renesas Electronics America Inc. San Jose Campus

6024 Silver Creek Valley Road, San Jose, CA 95138, USA

Tel: +1-408-284-8200, Fax: +1-408-284-2775

Renesas Electronics Canada Limited

9251 Yonge Street, Suite 8309 Richmond Hill, Ontario Canada L4C 9T3

Tel: +1-905-237-2004

Renesas Electronics Europe GmbH

Arcadiastrasse 10, 40472 Düsseldorf, Germany

Tel: +49-211-6503-0, Fax: +49-211-6503-1327

Renesas Electronics (China) Co., Ltd.

Room 101-T01, Floor 1, Building 7, Yard No. 7, 8th Street, Shangdi, Haidian District, Beijing 100085, China

Tel: +86-10-8235-1155, Fax: +86-10-8235-7679

Renesas Electronics (Shanghai) Co., Ltd.

Unit 301, Tower A, Central Towers, 555 Langao Road, Putuo District, Shanghai 200333, China

Tel: +86-21-2226-0888, Fax: +86-21-2226-0999

Renesas Electronics Hong Kong Limited

Unit 1601-1611, 16/F., Tower 2, Grand Century Place, 193 Prince Edward Road West, Mongkok, Kowloon, Hong Kong

Tel: +852-2265-6688, Fax: +852-2886-9022

Renesas Electronics Taiwan Co., Ltd.

13F, No. 363, Fu Shing North Road, Taipei 10543, Taiwan

Tel: +886-2-8175-9600, Fax: +886-2-8175-9670

Renesas Electronics Singapore Pte. Ltd.

80 Bendemeer Road, #06-02 Singapore 339949

Tel: +65-6213-0200, Fax: +65-6213-0300

Renesas Electronics Malaysia Sdn.Bhd.

Unit No 3A-1 Level 3A Tower 8 UOA Business Park, No 1 Jalan Pengerutarcua U1/51A, Seksyen U1, 40150 Shah Alam, Selangor, Malaysia

Tel: +60-3-5022-1288, Fax: +60-3-5022-1290

Renesas Electronics India Pvt. Ltd.

No.777C, 100 Feet Road, HAL 2nd Stage, Indiranagar, Bangalore 560 038, India

Tel: +91-80-67208700

Renesas Electronics Korea Co., Ltd.

17F, KAMCO Yangjae Tower, 262, Gangnam-daero, Gangnam-gu, Seoul, 06265 Korea

Tel: +82-2-558-3737, Fax: +82-2-558-5338