

This document outlines the device support, new features added in 4.2.0, fixed issues and open issues in e² studio 4.2.0.

1. Project Generator Support

CPU Family	Group	Devices
RH850	C1H	R7F701260, R7F701270,(Debug Support Only)
	C1M	R7F701263, R7F701271,(Debug Support Only)
	E1L	R7F701201, R7F701205,(Debug Support Only)
	E1M-S	R7F701202, R7F701204,(Debug Support Only)
	E1x-FCC1	R7F701Z05, R7F701Z06, R7F701Z07,(Debug Support Only)
	F1H	R7F701501, R7F701502, R7F701503, R7F701506, R7F701507, R7F701508, R7F701511, R7F701512, R7F701513,(Debug Support Only)
	F1H-GW	R7F701521, R7F701522, R7F701524, R7F701525,(Debug Support Only)
	F1L	R7F701002xAFP, R7F701003xAFP, R7F701006xAFP, R7F701007xAFP, R7F701008xAFP, R7F701009xAFP, R7F701010xAFP, R7F701011xAFP, R7F701012xAFP, R7F701013xAFP, R7F701014xAFP, R7F701015xAFP, R7F701016xAFP, R7F701017xAFP, R7F701018xAFP, R7F701019xAFP, R7F701020xAFP, R7F701021xAFP, R7F701022xAFP, R7F701023xAFP, R7F701024xAFP, R7F701025xAFP, R7F701026xAFP, R7F701027xAFP, R7F701028xAFP, R7F701029xAFP, R7F701030xAFP, R7F701032xAFP, R7F701033xAFP, R7F701034xAFP, R7F701040, R7F701041, R7F701042, R7F701043, R7F701044, R7F701045, R7F701046, R7F701047, R7F701048, R7F701049, R7F701050, R7F701051, R7F701052, R7F701053, R7F701054, R7F701055, R7F701056, R7F701057,(Debug Support Only)
	F1M	R7F701544, R7F701545, R7F701548, R7F701549, R7F701552, R7F701553, R7F701564, R7F701565, R7F701568, R7F701569, R7F701572, R7F701573,(Debug Support Only)
	P1M	R7F701304, R7F701305, R7F701310, R7F701311, R7F701312, R7F701313, R7F701314, R7F701315, R7F701318, R7F701319, R7F701320, R7F701321, R7F701322, R7F701323,(Debug Support Only)
-	R7F701060xAFP, R7F701062xAFP, R7F701064xAFP, R7F701065xAFP, R7F701067xAFP, R7F701069xAFP, R7F701071xAFP,(Debug Support Only)	
RL78	D1A	R5F10CGB, R5F10CGC, R5F10CGD, R5F10CLD, R5F10CMD, R5F10CME, R5F10DGC, R5F10DGD, R5F10DGE, R5F10DLD, R5F10DLE, R5F10DMD, R5F10DME, R5F10DMF, R5F10DMG, R5F10DMJ, R5F10DPE, R5F10DPF, R5F10DPG, R5F10DPJ, R5F10DPK, R5F10DPL, R5F10DSJ, R5F10DSK, R5F10DSL, R5F10TPJ

F12	R5F10968, R5F1096A, R5F1096B, R5F1096C, R5F1096D, R5F1096E, R5F109AA, R5F109AB, R5F109AC, R5F109AD, R5F109AE, R5F109BA, R5F109BB, R5F109BC, R5F109BD, R5F109BE, R5F109GA, R5F109GB, R5F109GC, R5F109GD, R5F109GE, R5F109LA, R5F109LB, R5F109LC, R5F109LD, R5F109LE
F13	R5F10A6A, R5F10A6C, R5F10A6D, R5F10A6E, R5F10AAA, R5F10AAC, R5F10AAD, R5F10AAE, R5F10ABA, R5F10ABC, R5F10ABD, R5F10ABE, R5F10AGA, R5F10AGC, R5F10AGD, R5F10AGE, R5F10AGF, R5F10AGG, R5F10ALC, R5F10ALD, R5F10ALE, R5F10ALF, R5F10ALG, R5F10AME, R5F10AMF, R5F10AMG, R5F10BAC, R5F10BAD, R5F10BAE, R5F10BAF, R5F10BAG, R5F10BBC, R5F10BBD, R5F10BBE, R5F10BBF, R5F10BBG, R5F10BGC, R5F10BGD, R5F10BGE, R5F10BGF, R5F10BGG, R5F10BLC, R5F10BLD, R5F10BLE, R5F10BLF, R5F10BLG, R5F10BME, R5F10BMF, R5F10BMG
F14	R5F10PAD, R5F10PAE, R5F10PBD, R5F10PBE, R5F10PGD, R5F10PGE, R5F10PGF, R5F10PGG, R5F10PGH, R5F10PGJ, R5F10PLE, R5F10PLF, R5F10PLG, R5F10PLH, R5F10PLJ, R5F10PME, R5F10PMF, R5F10PMG, R5F10PMH, R5F10PMJ, R5F10PPE, R5F10PPF, R5F10PPG, R5F10PPH, R5F10PPJ
F15	R5F113GK, R5F113GL, R5F113LK, R5F113LL, R5F113MK, R5F113ML, R5F113PG, R5F113PH, R5F113PJ, R5F113PK, R5F113PL, R5F113TG, R5F113TH, R5F113TJ, R5F113TK, R5F113TL
F1A	R5F114GC, R5F114GD, R5F114GE, R5F114GF, R5F114GG
G10	R5F10Y14, R5F10Y16, R5F10Y17, R5F10Y44, R5F10Y46, R5F10Y47
G12	R5F10266, R5F10267, R5F10268, R5F10269, R5F1026A, R5F10277, R5F10278, R5F10279, R5F1027A, R5F102A7, R5F102A8, R5F102A9, R5F102AA, R5F10366, R5F10367, R5F10368, R5F10369, R5F1036A, R5F10377, R5F10378, R5F10379, R5F1037A, R5F103A7, R5F103A8, R5F103A9, R5F103AA

		R5F1006A, R5F1006C, R5F1006D, R5F1006E, R5F1007A, R5F1007C, R5F1007D, R5F1007E, R5F1008A, R5F1008C, R5F1008D, R5F1008E, R5F100AA, R5F100AC, R5F100AD, R5F100AE, R5F100AF, R5F100AG, R5F100BA, R5F100BC, R5F100BD, R5F100BE, R5F100BF, R5F100BG, R5F100CA, R5F100CC, R5F100CD, R5F100CE, R5F100CF, R5F100CG, R5F100EA, R5F100EC, R5F100ED, R5F100EE, R5F100EF, R5F100EG, R5F100EH, R5F100FA, R5F100FC, R5F100FD, R5F100FE, R5F100FF, R5F100FG, R5F100FH, R5F100FJ, R5F100FK, R5F100FL, R5F100GA, R5F100GC, R5F100GD, R5F100GE, R5F100GF, R5F100GG, R5F100GH, R5F100GJ, R5F100GK, R5F100GL, R5F100JC, R5F100JD, R5F100JE, R5F100JF, R5F100JG, R5F100JH, R5F100JJ, R5F100JK, R5F100JL, R5F100LC, R5F100LD, R5F100LE, R5F100LF, R5F100LG, R5F100LH, R5F100LJ, R5F100LK, R5F100LL, R5F100MF, R5F100MG, R5F100MH, R5F100MJ, R5F100MK, R5F100ML, R5F100PF, R5F100PG, R5F100PH, R5F100PJ, R5F100PK, R5F100PL, R5F100SH, R5F100SJ, R5F100SK, R5F100SL, R5F1016A, R5F1016C, R5F1016D, R5F1016E, R5F1017A, R5F1017C, R5F1017D, R5F1017E, R5F1018A, R5F1018C, R5F1018D, R5F1018E, R5F101AA, R5F101AC, R5F101AD, R5F101AE, R5F101AF, R5F101AG, R5F101BA, R5F101BC, R5F101BD, R5F101BE, R5F101BF, R5F101BG, R5F101CA, R5F101CC, R5F101CD, R5F101CE, R5F101CF, R5F101CG, R5F101EA, R5F101EC, R5F101ED, R5F101EE, R5F101EF, R5F101EG, R5F101EH, R5F101FA, R5F101FC, R5F101FD, R5F101FE, R5F101FF, R5F101FG, R5F101FH, R5F101FJ, R5F101FK, R5F101FL, R5F101GA, R5F101GC, R5F101GD, R5F101GE, R5F101GF, R5F101GG, R5F101GH, R5F101GJ, R5F101GK, R5F101GL, R5F101JC, R5F101JD, R5F101JE, R5F101JF, R5F101JG, R5F101JH, R5F101JJ, R5F101JK, R5F101JL, R5F101LC, R5F101LD, R5F101LE, R5F101LF, R5F101LG, R5F101LH, R5F101LJ, R5F101LK, R5F101LL, R5F101MF, R5F101MG, R5F101MH, R5F101MJ, R5F101MK, R5F101ML, R5F101PF, R5F101PG, R5F101PH, R5F101PJ, R5F101PK, R5F101PL, R5F101SH, R5F101SJ, R5F101SK, R5F101SL
	G13	
		R5F104AA, R5F104AC, R5F104AD, R5F104AE, R5F104AF, R5F104AG, R5F104BA, R5F104BC, R5F104BD, R5F104BE, R5F104BF, R5F104BG, R5F104CA, R5F104CC, R5F104CD, R5F104CE, R5F104CF, R5F104CG, R5F104EA, R5F104EC, R5F104ED, R5F104EE, R5F104EF, R5F104EG, R5F104EH, R5F104FA, R5F104FC, R5F104FD, R5F104FE, R5F104FF, R5F104FG, R5F104FH, R5F104FJ, R5F104GA, R5F104GC, R5F104GD, R5F104GE, R5F104GF, R5F104GG, R5F104GH, R5F104GJ, R5F104GK, R5F104GL, R5F104JC, R5F104JD, R5F104JE, R5F104JF, R5F104JG, R5F104JH, R5F104JJ, R5F104LC, R5F104LD, R5F104LE, R5F104LF, R5F104LG, R5F104LH, R5F104LJ, R5F104LK, R5F104LL, R5F104MF, R5F104MG, R5F104MH, R5F104MJ, R5F104MK, R5F104ML, R5F104PF, R5F104PG, R5F104PH, R5F104PJ, R5F104PK, R5F104PL
	G14	
		R5F10E8A, R5F10E8C, R5F10E8D, R5F10E8E, R5F10E8A, R5F10E8C, R5F10EBD, R5F10EBE, R5F10EGA, R5F10EGC, R5F10EGD, R5F10EGE, R5F10ELC, R5F10ELD, R5F10ELE
	G1A	
		R5F10JBC, R5F10JGC, R5F10KBC, R5F10KGC
	G1C	
		R5F11AGG, R5F11AGH, R5F11AGJ
	G1D	
		R5F10FLC, R5F10FLD, R5F10FLE, R5F10FMC, R5F10FMD, R5F10FME
	G1E	

	G1F	R5F11B7C, R5F11B7E, R5F11BBC, R5F11BBE, R5F11BCC, R5F11BCE, R5F11BGC, R5F11BGE, R5F11BLC, R5F11BLE
	G1G	R5F11EA8, R5F11EAA, R5F11EB8, R5F11EBA, R5F11EF8, R5F11EFA
	I1A	R5F1076C, R5F107AC, R5F107AE, R5F107DE
	I1B	R5F10MME, R5F10MMG, R5F10MPE, R5F10MPG
	I1D	R5F11768, R5F1176A, R5F11778, R5F1177A, R5F117A8, R5F117AA, R5F117AC, R5F117BA, R5F117BC, R5F117GA, R5F117GC
	I1E	R5F11CBC, R5F11CCC
	L12	R5F10RB8, R5F10RBA, R5F10RBC, R5F10RF8, R5F10RFA, R5F10RFC, R5F10RG8, R5F10RGA, R5F10RGC, R5F10RJ8, R5F10RJA, R5F10RJC, R5F10RLA, R5F10RLC
	L13	R5F10WLA, R5F10WLC, R5F10WLD, R5F10WLE, R5F10WLF, R5F10WLG, R5F10WMA, R5F10WMC, R5F10WMD, R5F10WME, R5F10WMF, R5F10WMG
	L1C	R5F110ME, R5F110MF, R5F110MG, R5F110MH, R5F110MJ, R5F110NE, R5F110NF, R5F110NG, R5F110NH, R5F110NJ, R5F110PE, R5F110PF, R5F110PG, R5F110PH, R5F110PJ, R5F111ME, R5F111MF, R5F111MG, R5F111MH, R5F111MJ, R5F111NE, R5F111NF, R5F111NG, R5F111NH, R5F111NJ, R5F111PE, R5F111PF, R5F111PG, R5F111PH, R5F111PJ
RX	110	R5F51101, R5F51103, R5F51104, R5F51105, R5F5110H, R5F5110J
	111	R5F51111, R5F51113, R5F51114, R5F51115, R5F51116, R5F51117, R5F51118, R5F5111J
	113	R5F51135, R5F51136, R5F51137, R5F51138
	130	R5F51303, R5F51305
	210	R5F52103, R5F52104, R5F52105, R5F52106, R5F52107, R5F52108, R5F5210A, R5F5210B
	21A	R5F521A6, R5F521A7, R5F521A8
	220	R5F52201, R5F52203, R5F52205, R5F52206
	230	R5F52305, R5F52306
	231	R5F52315, R5F52316, R5F52317, R5F52318
	23T	R5F523T3, R5F523T5
	24T	R5F524T8, R5F524TA
	610	R5F56104, R5F56106, R5F56107, R5F56108
	621	R5F56216, R5F56217, R5F56218
	62G	R5F562G7, R5F562GA
	62N	R5F562N7, R5F562N8
	62T	R5F562T6, R5F562T7, R5F562TA
	630	R5F56307, R5F56308, R5F5630A, R5F5630B, R5F5630D, R5F5630E

	631	R5F56316, R5F56317, R5F56318, R5F5631A, R5F5631B, R5F5631D, R5F5631E, R5F5631F, R5F5631G, R5F5631J, R5F5631K, R5F5631M, R5F5631N, R5F5631P, R5F5631W, R5F5631Y, R5S56310 R5F5631MF, R5F5631PF,(Debug Support Only)
	634	R5F5634B, R5F5634D, R5F5634E R5F5634B_5V, R5F5634D_5V, R5F5634E_5V,(Debug Support Only)
	63N	R5F563NA, R5F563NB, R5F563ND, R5F563NE, R5F563NF, R5F563NK, R5F563NW, R5F563NY
	63T	R5F563T4, R5F563T5, R5F563T6, R5F563TB, R5F563TC, R5F563TE R5F563TB_5V, R5F563TC_5V, R5F563TE_5V,(Debug Support Only)
	64M	R5F564MF, R5F564MG, R5F564MJ, R5F564ML
	71M	R5F571MF, R5F571MG, R5F571MJ, R5F571ML
RZ	A1	R7S72100, R7S721001, R7S72101, R7S72102 R7S721001_DualSPI, R7S721020, R7S721020_DualSPI, R7S721021, R7S721021_DualSPI,(Debug Support Only)
	T1	R7S910001, R7S910002, R7S910006, R7S910007, R7S910011, R7S910013, R7S910015, R7S910015_M3, R7S910016, R7S910016_M3, R7S910017, R7S910017_M3, R7S910018, R7S910018_M3, R7S910025, R7S910026, R7S910027, R7S910028, R7S910101, R7S910102, R7S910106, R7S910107, R7S910111, R7S910113, R7S910115, R7S910115_M3, R7S910116, R7S910116_M3, R7S910117, R7S910117_M3, R7S910118, R7S910118_M3, R7S910125, R7S910126, R7S910127, R7S910128
SH	SH2	SH7047F, SH70834A, SH70844A, SH70854A, SH70865A, SH71242, SH71252, SH7144F, SH7145F, SH71464A, SH71491R, SH7615, SH7616, SH7618, SH7619
	SH2A-FPU	SH72394B
	SH2a	SH7201, SH7203, SH72165AD, SH72546RFCC, SH72611, SH72620, SH72630, SH72640, SH72690, SH7670
	SH2a (No FPU)	SH7206, SH7211, SH7243, SH7285, SH7286
Synergy	S7G2	R7FS7G27H2A01CBD, R7FS7G27G2A01CBD, R7FS7G27H2A01CBG, R7FS7G27G2A01CBG, R7FS7G27H2A01CFC, R7FS7G27H3A01CFC, R7FS7G27G2A01CFC, R7FS7G27G3A01CFC, R7FS7G27H2A01CLK, R7FS7G27G2A01CLK, R7FS7G27H3A01CFB, R7FS7G27G3A01CFB
	S3A7	R7FS3A77C2A01CLK, R7FS3A77C3A01CFB, R7FS3A77C2A01CBJ, R7FS3A77C3A01CFP, R7FS3A77C2A01CLJ, R7FS3A77C3A01CFM, R7FS3A77C2A01CNB, R7FS3A77C3A01CNB
	S124	R7FS124773A01CFM, R7FS124772A01CNB, R7FS124773A01CNB, R7FS124763A01CFM, R7FS124762A01CNB, R7FS124763A01CNB,

		R7FS124773A01CFL, R7FS124772A01CNE, ,R7FS124773A01CNE, R7FS124763A01CFL, R7FS124762A01CNE, R7FS124763A01CNE, R7FS124772A01CNF, R7FS124773A01CNF, R7FS124762A01CNF, R7FS124763A01CNF, R7FS124772A01CLM, R7FS124762A01CLM
--	--	--

2. Code Generator Support

CPU Family	Group	Devices
RL78	F12	R5F10968, R5F1096A, R5F1096B, R5F1096C, R5F1096D, R5F1096E, R5F109AA, R5F109AB, R5F109AC, R5F109AD, R5F109AE, R5F109BA, R5F109BB, R5F109BC, R5F109BD, R5F109BE, R5F109GA, R5F109GB, R5F109GC, R5F109GD, R5F109GE, R5F109LA, R5F109LB, R5F109LC, R5F109LD, R5F109LE
	F13	R5F10A6A, R5F10A6C, R5F10A6D, R5F10A6E, R5F10AAA, R5F10AAC, R5F10AAD, R5F10AAE, R5F10ABA, R5F10ABC, R5F10ABD, R5F10ABE, R5F10AGA, R5F10AGC, R5F10AGD, R5F10AGE, R5F10AGF, R5F10AGG, R5F10ALC, R5F10ALD, R5F10ALE, R5F10ALF, R5F10ALG, R5F10AME, R5F10AMF, R5F10AMG, R5F10BAC, R5F10BAD, R5F10BAE, R5F10BAF, R5F10BAG, R5F10BBC, R5F10BBD, R5F10BBE, R5F10BBF, R5F10BBG, R5F10BGC, R5F10BGD, R5F10BGE, R5F10BGF, R5F10BGG, R5F10BLC, R5F10BLD, R5F10BLE, R5F10BLF, R5F10BLG, R5F10BME, R5F10BMF, R5F10BMG
	F14	R5F10PAD, R5F10PAE, R5F10PBD, R5F10PBE, R5F10PGD, R5F10PGE, R5F10PGF, R5F10PGG, R5F10PGH, R5F10PGJ, R5F10PLE, R5F10PLF, R5F10PLG, R5F10PLH, R5F10PLJ, R5F10PME, R5F10PMF, R5F10PMG, R5F10PMH, R5F10PMJ, R5F10PPE, R5F10PPF, R5F10PPG, R5F10PPH, R5F10PPJ
	F15	R5F113GK, R5F113GL, R5F113LK, R5F113LL, R5F113MK, R5F113ML, R5F113PG, R5F113PH, R5F113PJ, R5F113PK, R5F113PL, R5F113TG, R5F113TH, R5F113TJ, R5F113TK, R5F113TL
	G10	R5F10Y14, R5F10Y16, R5F10Y17, R5F10Y44, R5F10Y46, R5F10Y47
	G12	R5F10266, R5F10267, R5F10268, R5F10269, R5F1026A, R5F10277, R5F10278, R5F10279, R5F1027A, R5F102A7, R5F102A8, R5F102A9, R5F102AA, R5F10366, R5F10367, R5F10368, R5F10369, R5F1036A, R5F10377, R5F10378, R5F10379, R5F1037A, R5F103A7, R5F103A8, R5F103A9, R5F103AA

	R5F1006A, R5F1006C, R5F1006D, R5F1006E, R5F1007A, R5F1007C, R5F1007D, R5F1007E, R5F1008A, R5F1008C, R5F1008D, R5F1008E, R5F100AA, R5F100AC, R5F100AD, R5F100AE, R5F100AF, R5F100AG, R5F100BA, R5F100BC, R5F100BD, R5F100BE, R5F100BF, R5F100BG, R5F100CA, R5F100CC, R5F100CD, R5F100CE, R5F100CF, R5F100CG, R5F100EA, R5F100EC, R5F100ED, R5F100EE, R5F100EF, R5F100EG, R5F100EH, R5F100FA, R5F100FC, R5F100FD, R5F100FE, R5F100FF, R5F100FG, R5F100FH, R5F100FJ, R5F100FK, R5F100FL, R5F100GA, R5F100GC, R5F100GD, R5F100GE, R5F100GF, R5F100GG, R5F100GH, R5F100GJ, R5F100GK, R5F100GL, R5F100JC, R5F100JD, R5F100JE, R5F100JF, R5F100JG, R5F100JH, R5F100JJ, R5F100JK, R5F100JL, R5F100LC, R5F100LD, R5F100LE, R5F100LF, R5F100LG, R5F100LH, R5F100LJ, R5F100LK, R5F100LL, R5F100MF, R5F100MG, R5F100MH, R5F100MJ, R5F100MK, R5F100ML, R5F100PF, R5F100PG, R5F100PH, R5F100PJ, R5F100PK, R5F100PL, R5F100SH, R5F100SJ, R5F100SK, R5F100SL, R5F1016A, R5F1016C, R5F1016D, R5F1016E, R5F1017A, R5F1017C, R5F1017D, R5F1017E, R5F1018A, R5F1018C, R5F1018D, R5F1018E, R5F101AA, R5F101AC, R5F101AD, R5F101AE, R5F101AF, R5F101AG, R5F101BA, R5F101BC, R5F101BD, R5F101BE, R5F101BF, R5F101BG, R5F101CA, R5F101CC, R5F101CD, R5F101CE, R5F101CF, R5F101CG, R5F101EA, R5F101EC, R5F101ED, R5F101EE, R5F101EF, R5F101EG, R5F101EH, R5F101FA, R5F101FC, R5F101FD, R5F101FE, R5F101FF, R5F101FG, R5F101FH, R5F101FJ, R5F101FK, R5F101FL, R5F101GA, R5F101GC, R5F101GD, R5F101GE, R5F101GF, R5F101GG, R5F101GH, R5F101GJ, R5F101GK, R5F101GL, R5F101JC, R5F101JD, R5F101JE, R5F101JF, R5F101JG, R5F101JH, R5F101JJ, R5F101JK, R5F101JL, R5F101LC, R5F101LD, R5F101LE, R5F101LF, R5F101LG, R5F101LH, R5F101LJ, R5F101LK, R5F101LL, R5F101MF, R5F101MG, R5F101MH, R5F101MJ, R5F101MK, R5F101ML, R5F101PF, R5F101PG, R5F101PH, R5F101PJ, R5F101PK, R5F101PL, R5F101SH, R5F101SJ, R5F101SK, R5F101SL
G13	
G14	R5F104AA, R5F104AC, R5F104AD, R5F104AE, R5F104AF, R5F104AG, R5F104BA, R5F104BC, R5F104BD, R5F104BE, R5F104BF, R5F104BG, R5F104CA, R5F104CC, R5F104CD, R5F104CE, R5F104CF, R5F104CG, R5F104EA, R5F104EC, R5F104ED, R5F104EE, R5F104EF, R5F104EG, R5F104EH, R5F104FA, R5F104FC, R5F104FD, R5F104FE, R5F104FF, R5F104FG, R5F104FH, R5F104FJ, R5F104GA, R5F104GC, R5F104GD, R5F104GE, R5F104GF, R5F104GG, R5F104GH, R5F104GJ, R5F104GK, R5F104GL, R5F104JC, R5F104JD, R5F104JE, R5F104JF, R5F104JG, R5F104JH, R5F104JJ, R5F104LC, R5F104LD, R5F104LE, R5F104LF, R5F104LG, R5F104LH, R5F104LJ, R5F104LK, R5F104LL, R5F104MF, R5F104MG, R5F104MH, R5F104MJ, R5F104MK, R5F104ML, R5F104PF, R5F104PG, R5F104PH, R5F104PJ, R5F104PK, R5F104PL
G1A	R5F10E8A, R5F10E8C, R5F10E8D, R5F10E8E, R5F10E8A, R5F10E8C, R5F10EBD, R5F10EBE, R5F10EGA, R5F10EGC, R5F10EGD, R5F10EGE, R5F10ELC, R5F10ELD, R5F10ELE
G1C	R5F10JBC, R5F10JGC, R5F10KBC, R5F10KGC
G1D	R5F11AGG, R5F11AGH, R5F11AGJ
G1E	R5F10FLC, R5F10FLD, R5F10FLE, R5F10FMC, R5F10FMD, R5F10FME

	G1F	R5F11B7C, R5F11B7E, R5F11BBC, R5F11BBE, R5F11BCC, R5F11BCE, R5F11BGC, R5F11BGE, R5F11BLC, R5F11BLE
	G1G	R5F11EA8, R5F11EAA, R5F11EB8, R5F11EBA, R5F11EF8, R5F11EFA
	I1A	R5F1076C, R5F107AC, R5F107AE, R5F107DE
	I1B	R5F10MME, R5F10MMG, R5F10MPE, R5F10MPG
	I1D	R5F11768, R5F1176A, R5F11778, R5F1177A, R5F117A8, R5F117AA, R5F117AC, R5F117BA, R5F117BC, R5F117GA, R5F117GC
	I1E	R5F11CBC, R5F11CCC
	L12	R5F10RB8, R5F10RBA, R5F10RBC, R5F10RF8, R5F10RFA, R5F10RFC, R5F10RG8, R5F10RGA, R5F10RGC, R5F10RJ8, R5F10RJA, R5F10RJC, R5F10RLA, R5F10RLC
	L13	R5F10WLA, R5F10WLC, R5F10WLD, R5F10WLE, R5F10WLF, R5F10WLG, R5F10WMA, R5F10WMC, R5F10WMD, R5F10WME, R5F10WMF, R5F10WMG
	L1C	R5F110ME, R5F110MF, R5F110MG, R5F110MH, R5F110MJ, R5F110PE, R5F110PF, R5F110PG, R5F110PH, R5F110PJ, R5F111ME, R5F111MF, R5F111MG, R5F111MH, R5F111MJ, R5F111PE, R5F111PF, R5F111PG, R5F111PH, R5F111PJ
RX	110	R5F51101, R5F51103, R5F51104, R5F51105, R5F5110H, R5F5110J
	111	R5F51111, R5F51113, R5F51114, R5F51115, R5F51116, R5F51117, R5F51118, R5F5111J
	113	R5F51135, R5F51136, R5F51137, R5F51138
	130	R5F51303, R5F51305
	230	R5F52305, R5F52306
	231	R5F52315, R5F52316, R5F52317, R5F52318
	23T	R5F523T3, R5F523T5
	24T	R5F524T8, R5F524TA
	64M	R5F564MF, R5F564MG, R5F564MJ, R5F564ML
	71M	R5F571MF, R5F571MG, R5F571MJ, R5F571ML
RZ	T1	R7S910001, R7S910002, R7S910006, R7S910007, R7S910011, R7S910013, R7S910015, R7S910016, R7S910017, R7S910018, R7S910101, R7S910102, R7S910106, R7S910107, R7S910111, R7S910113, R7S910115, R7S910116, R7S910117, R7S910118

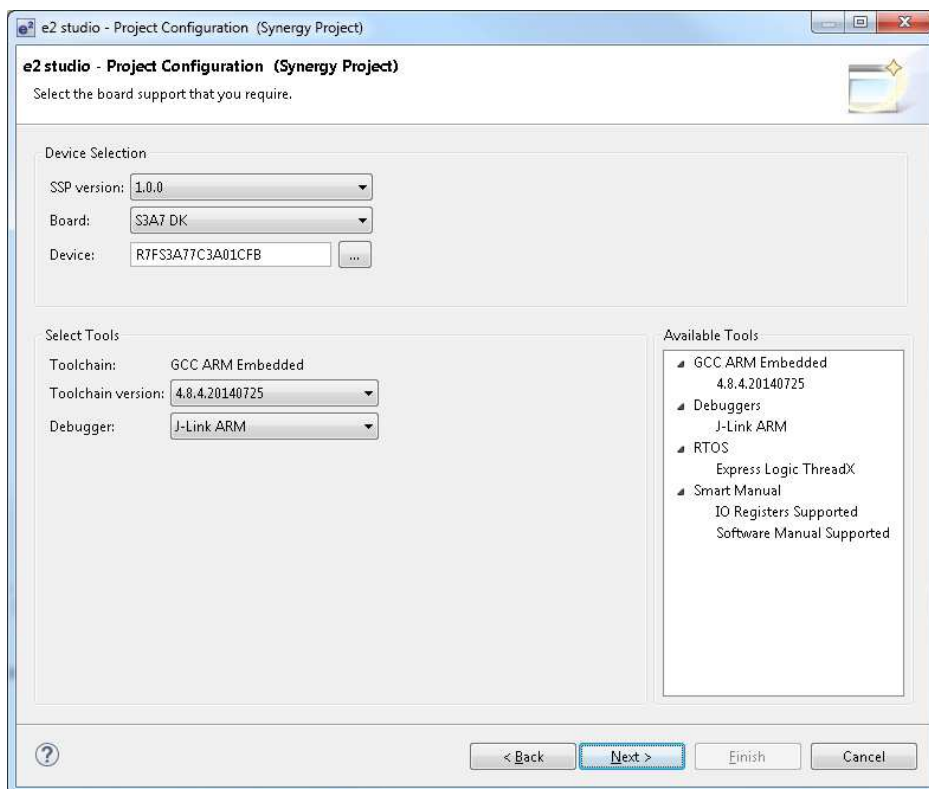
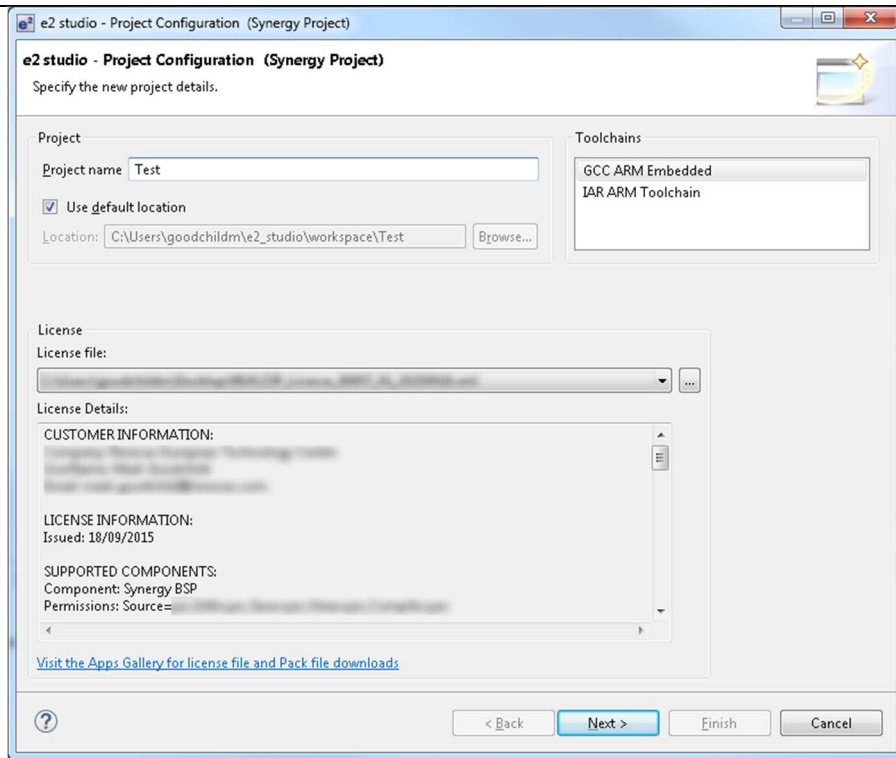
3. Current Smart Manual support

Smart manual support is delivered independently of e² studio releases when available. The following devices are available as of the 21st of September, 2015:

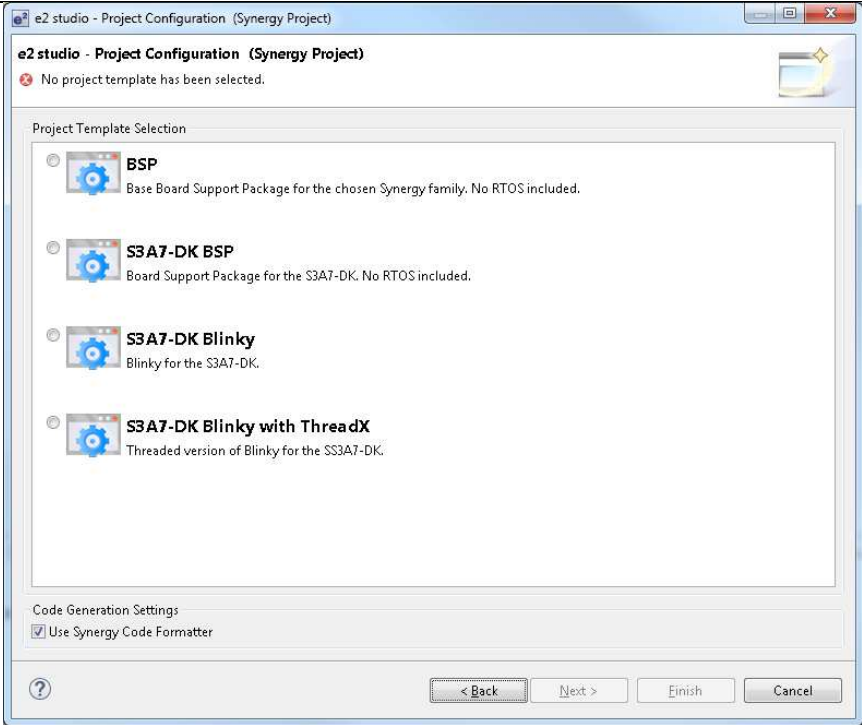
- RX62G
- RX62T
- RX63N
- RX63T
- RX64M
- RX71M
- RX110
- RX111
- RX113
- RX210
- RX220
- RX631

4. What is new in 4.2.0?

Component	Description
Synergy Support	<p>e² studio 4.2 will be the first version of the product to support the new Renesas Synergy Family. This will have a lot of specific functionality to support the ARM Cortex M series devices. Initially supporting the S3A7 and S7G2 group of devices on the ARM Cortex M4.</p> <p>The functionality provided will create ARM Launchpad GCC and IAR ARM toolchain Synergy projects which can create, configure and debug projects using SSP (Synergy Software Platform) components. Note, you can download the ARM Launchpad GCC using the web based e² studio installer.</p> <p>The SSP is a driver model which delivers both HAL drivers and framework drivers providing higher level services for customers to use in their end applications. These framework drivers are built on top of the ThreadX RTOS.</p> <p>Before you try and use the Synergy project generator you need to ensure you have a valid license and the latest version of the SSP.</p> <p>To download the latest version of the SSP please go to The Synergy gallery website to register and download: https://synergygallery.renesas.com</p> <p>The Synergy project generator is available via [File->New->Synergy Project].</p> <p>To use the system you need to browse to a license file which can be downloaded from the gallery.</p> <p>Once the project is created and editor is displayed which allows the configuration of the Synergy project and SSP code.</p> <p>Project generation</p> <p>A fully featured project generator will be implemented to create Synergy projects for GCC and IAR. This allows selection of the device, board, toolchain version and debugger. This project generator is launched via the [File->New->Synergy Project] menu item.</p>



Once these are selected a project templates page is shown that allows you to choose a suitable template to start building your project from.



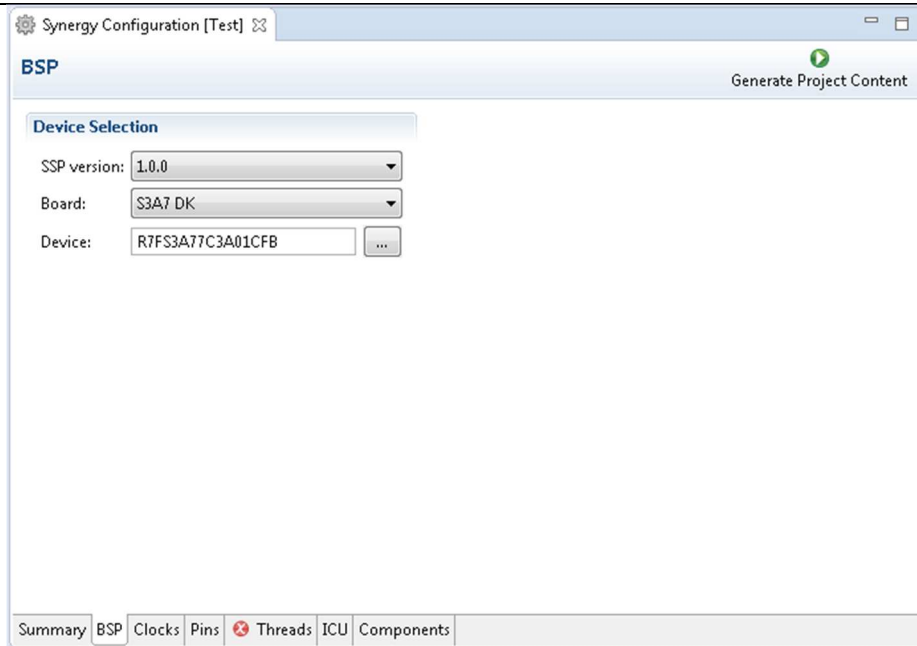
Editing and configuring projects

Once created the configuration file will be loaded into the e² studio, this file is a XML file but when opened in the editor it shows a graphical editor of the file. Initially when opened e² studio opens the Synergy Configuration perspective giving maximum screen space for the Synergy editor plugins.

Initially the summary page is opened but there are various other tabs available in the editor:

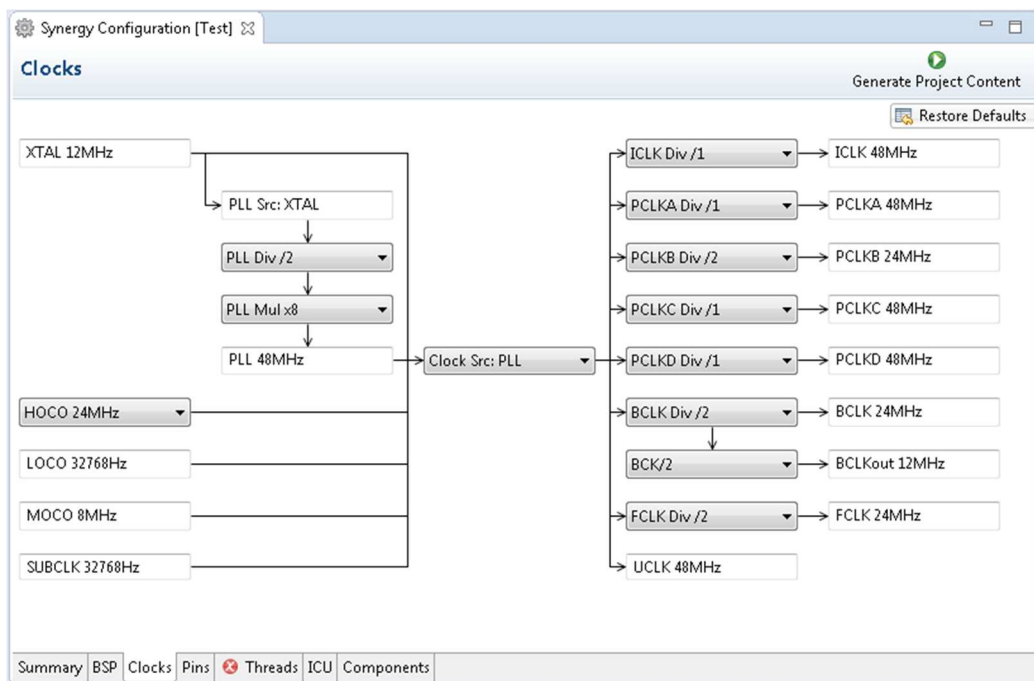
BSP

This tab allows you to change the selected board or device. When this tab is in view the properties view also shows the properties for the BSP code. Changing these values will modify header files when the code is generated which configure the BSP software module.



Clocks

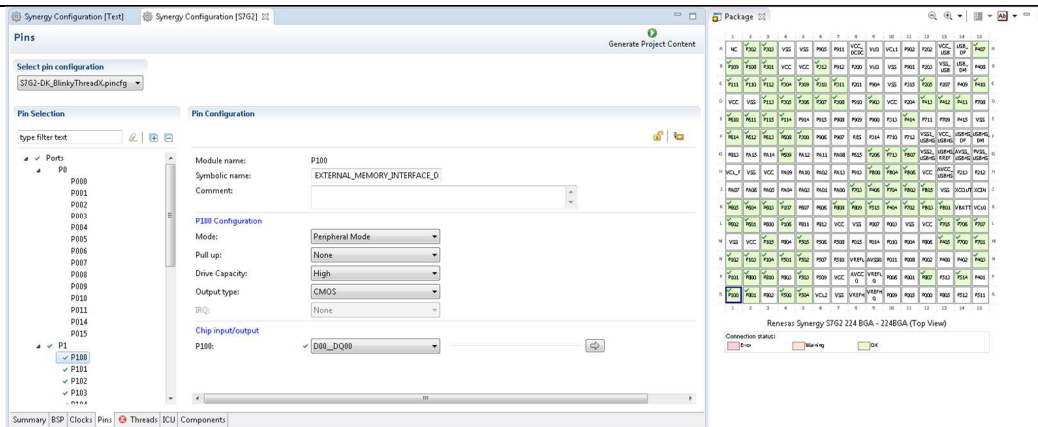
The clocks tab allows you to configure the clock frequencies for the device. This data is used to generate the clock header file for the BSP when the code is generated.



Pins

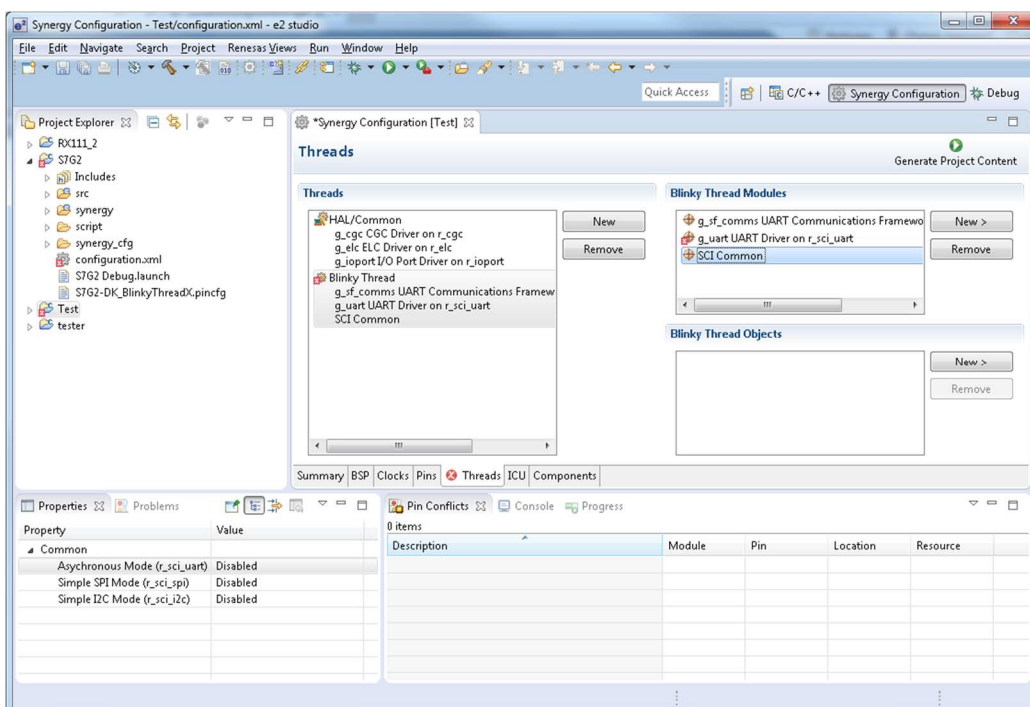
The pins view allows you to configure the pin configuration for the device. This can be achieved via the package view or via the editor view.

There is also a pin conflict view which shows problems in an easy to reach view which relate to pin setup.



Threads

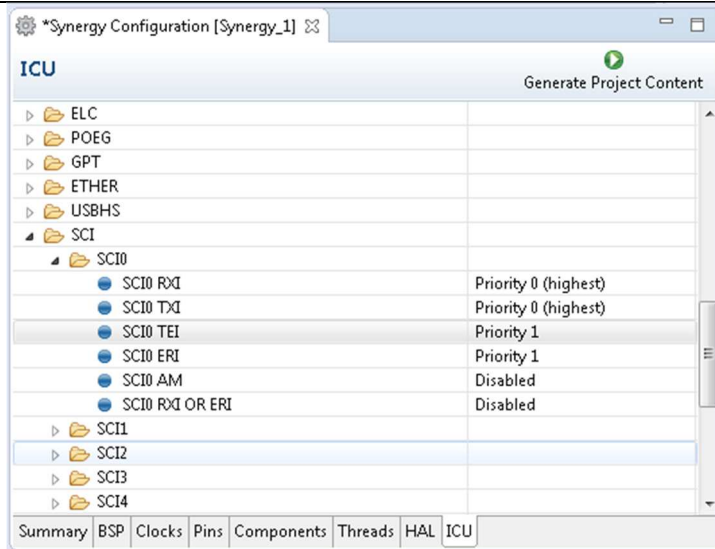
The threads tab is where the main configuration of the project source code occurs. Here the user can create RTOS threads, create RTOS events, add modules to a thread and configure modules.



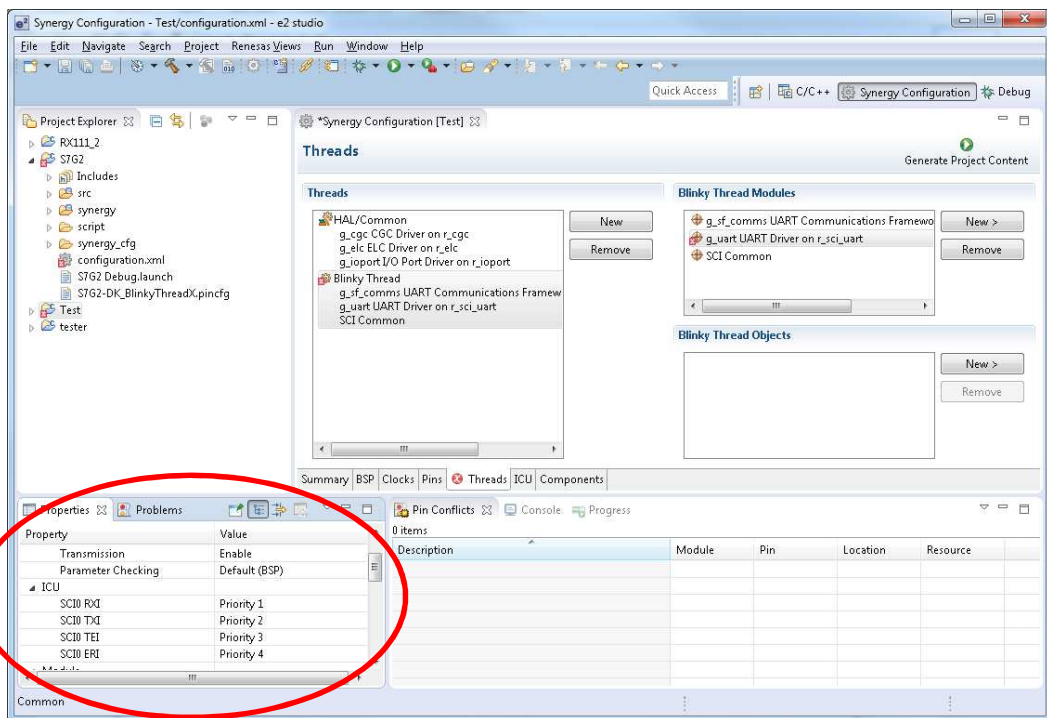
When the code is generated the files are created or overwritten on the basis of the settings made.

ICU

This tab allows you to configure the interrupts in their project. All interrupts in the system are listed. Selecting an interrupt allows the user to enable and specify the priority of the interrupt.

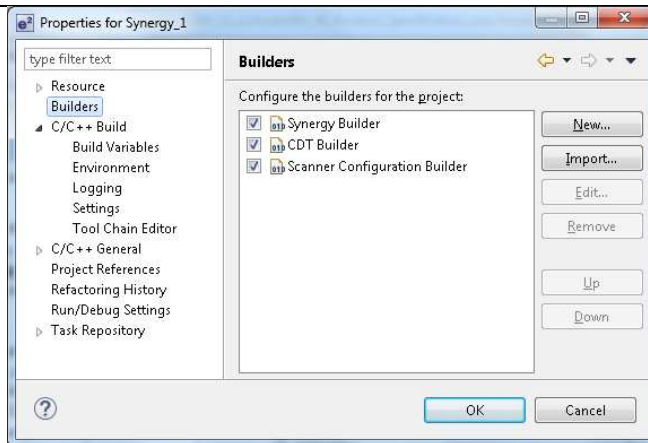


Interrupts can also be configured from the properties window for the selected module in the threads tab.



Generating and building code

There are two methods for the code to be generated. There is a generate code button within the editor, there is also a builder implementation. This builder regenerates the editor source files when the settings have been modified on a standard Synergy build operation.



Debugging

The debugger for the Synergy platform is the Segger J-link. This has been implemented for the CM4 and CM0+ devices. In addition functionality such as Semi-hosting has been added to extend the already existing ARM e² studio debugger.

Also support has been added to the Partner OS to support Thread X and integration to TraceX also added to the product.

5. Useful workarounds and information for 4.2

ID	Component	Workaround or information
	Application	<p>This version of e² studio is based on Eclipse Luna SR2 and CDT 8.6. This release note does not describe the Eclipse framework and CDT plugin issues and fixes. You can find the detailed information on the sites below:</p> <p>For information on the Luna release see here: https://projects.eclipse.org/releases/luna http://archive.eclipse.org/eclipse/downloads/drops4/R-4.4-201406061215/news/</p> <p>CDT: https://wiki.eclipse.org/CDT/User/NewIn86</p> <p>The Eclipse bug tracker is here: https://bugs.eclipse.org/bugs/</p> <p>The bug list for Luna is available using the following query: https://bugs.eclipse.org/bugs/buglist.cgi?bug_status=RESOLVED&bug_status=VERIFIED&bug_status=CLOSED&classification=Eclipse&list_id=12238007&product=Platform&query_format=advanced&resolution=FIXED&target_milestone=4.4&target_milestone=4.4%20M1&target_milestone=4.4%20M2&target_milestone=4.4%20M3&target_milestone=4.4%20M4&target_milestone=4.4%20M5&target_milestone=4.4%20M6&target_milestone=4.4%20M7&target_milestone=4.4%20RC1&target_milestone=4.4%20RC2&target_milestone=4.4%20RC3&target_milestone=4.4%20RC4&target_milestone=4.4.1&target_milestone=4.4.2</p> <p>Bug List for CDT is: https://bugs.eclipse.org/bugs/buglist.cgi?bug_status=RESOLVED&bug_status=VERIFIED&bug_status=CLOSED&classification=Tools&list_id=12238014&product=CDT&query_format=advanced&resolution=FIXED&target_milestone=8.5&target_milestone=8.6.0</p>
5954	Application	<p>If you experience the error message “org.eclipse.swt.SWTError: No more handles” this can be caused by certain multi-monitor software and the Eclipse framework.</p> <p>If this error occurs there are 2 workarounds:</p> <ol style="list-style-type: none"> 1. Use a single monitor display. 2. Uninstall the multiple monitor software from your graphics chipset vendor and revert to the standard Windows multi-monitor feature.
6981	RL78 Debugging	<p>When debugging IAR C source file with an OCD emulator (E1), the Monitor program area (0x00002-0x00003) is used.</p> <p>So this area must be excluded from usable address space. Please add '-HFF' in the linker option.</p> <ul style="list-style-type: none"> - Open Property. - Select [C/C++ build]-[Settings] at left side. - Select 'IAR RL78 Xlink linker' at right side, add '-HFF' at the textbox 'command'.

		Not doing this will cause problems with connection and download when using interrupts.
NA	Application	<p>If you are experiencing slow building of projects within e² studio there are some possibilities to improve.</p> <p>The system environment will attempt to find the make.exe tool via the system environment. If you ensure the directory make resides in is at the start of the path variable it will find it more quickly. Especially important if there are network drives in the path.</p> <p>In the project properties, C/C++ Build tab, behavior tab you can switch on parallel build. This will take advantage of the multi-cores on your host machine if it has them. In e² studio 2.1 or later this now defaults to on for new projects.</p>
NA	RZ GCC	<p>In 3.0 the KPIT GCC RZ toolchain was support at version 14.01. This version is no longer supported within e² studio.</p> <p>KPIT have modified the name of their ARM toolchain to be ARM-none-eabi to follow standard ARM naming convention like other GCC toolchain vendors.</p> <p>The toolchain is available at version 14.01 and 14.02 from the KPIT website. The binaries in the 14.01 version is identical to that used in the 14.01 RZ toolchain.</p> <p>Once the toolchain is installed your projects will be imported and ported to ensure there is as little disruption as possible due to this change.</p>
NA	GCC Build Plugin	The GNU toolchain linker file format was changed in 3.0. This means projects that are developed in 3.0 or later and opened in 2.x will still continue to build. However you may experience issues visiting the GCC Linker Sections user interface.
5041	Code Generator	<p>Code Generator can delete user code between /* Start */ End comments in some situations.</p> <p>Using the code generator if the following code is placed in the main function: <pre>//if(data_in!=0xAA){</pre> On a line by itself, all of the main code will be removed when Generate Code button is pressed. The key issue is that the {brace is on the same line as the comment.</p>
2010	HEW Importer	<p>Symptoms: Project fails to build after import from HEW</p> <p>Conditions: If a long filename or path is used, and the HEW project importer is used, the project may fail to build.</p> <p>Workaround: Move the original HEW project to a shallow directory structure (i.e.) C:\Workspace and import from there. Also ensure that the HEW project is relocated before importing into e² studio.</p>
2421	Debug Configurations	<p>Debug configurations have been modified since e² studio 2.x. So although you can re-use the workspace and projects from e² studio 1.x when you open the debug launch configuration for the first time it is updated.</p> <p>Before doing this you should back-up the .launch file if you need to keep a 1.x version.</p>
NA	Application	It is not possible to import e ² studio 1.x projects which are for the V850 device into e ² studio 2.0.

1922	Application	<p>Symptoms: Project fails to build in first instance after archive project import (not from HEW)</p> <p>Conditions: If an archived project is imported it may fail to build the first time, due to a residual .d file.</p> <p>Workaround: Clean and Build a second time.</p>
2762	CODAN	<p>When using assembly code within a C source file, Codan errors can be observed in the editor. Even though the project builds successfully.</p> <p>We do not have a workaround for this at this time.</p> <p>On occasion you may also see this for C source files. This is normally a case of the indexer needing to be refreshed.</p> <p>Right click on the project, select Index->Freshen all files. Then right click again select Index-Rebuild. This should solve unexpected CODAN errors in C source files.</p>
2728	GDB	<p>Step into does not always work when using the CCRX 1.02.01 toolchain.</p> <p>To ensure this behaves correctly you will need to use CCRX 2.00.00 or greater as this issue with the debug information is corrected in this release.</p>
NA	Eventpoints	<p>If eventpoints do not always work just after they are set, you can use the "Apply to Target" toolbar button in the Eventpoint view to send the Eventpoints to the target manually. This will always ensure the debugger target has all the required eventpoint updates before execution starts.</p>
5772	IAR Plugins	<p>The IAR Plugin Manager is now included in e² studio. This provides support for RX, RL78, RH850 and RZ (ARM).</p> <p>This is a tool which simplifies installation and configuration of IAR toolchain plugins. You can access this through Help -> IAR Embedded Workbench plugin manager.</p>
5903	Code Generator	<p>For the following RL78 code generator project, "Peripheral Functions" view tabs may not be operated with double-clicking "Peripheral Functions" branch of Project Explorer view.</p> <p>After creating/loading the project, please show "Code Preview" view by double-clicking of "Code preview" branch at Project Explorer tree at first. Then, please access Code Generator setting tabs by double-clicking Project Explorer tree or using pull-down menu by pressing triangle button at the up-right corner of Peripheral Functions view.</p> <p>RL78/G12, RL78/G13, RL78/G14, RL78/G1A, RL78/I1A, RL78/F13, RL78/F14, RL78/F12, RL78/L12</p>
6184	RL78/CCRL debugging	<p>When the load module for RL78/G10 which created at CC-RL is debugged in E1, please specify the following option:</p> <p>[Linker] -> [Device] -> "Set enable/disable on-chip debug by link option"</p>
5995	CCRX to GNU RX Converter	<p>When converting from CCRX to GCC projects some comments like <code>/** comment */</code> are left intact which will result in an error if standard is set to C89. Changing the standard to C99 or above will fix this problem.</p>

7217	Application	The restore default settings does not restore all of the options set during project generation. Instead it sets the defaults to the base settings for the device family in use.
7524	RZ/T1 Debugging	<p>In a RZ/T1 RAM-based project, the "Reload" function does not work.</p> <p>Reloading or re-downloading during debugging resets the device and the RAM content is erased.</p> <p>To continue the debugging, disconnect and connect the debugger again.</p>
	RZ/T1 Debugging	<p>HVA0 register writing is needed in VIC register initialization by updating user's manual of RZ/T1.</p> <pre> void icu_init(void) { /* Initialize VIC (dummy writing to HVA0 register) */ VIC.HVA0.LONG = 0x00000000; /****** /* Set IRQ pin interrupt 5(IRQ9) */ /****** </pre>

6. Fixed issues in 4.2.0.12

ID	Component	Description
7180	CodeGenerator plugin	<p>RX64M code generator</p> <p>Multi-function timer pulse unit 3</p> <p>When TGRC0, TGRD0 and TGRE0 is set to buffer register mode in normal mode, TMDR1 register setting is incorrect.</p> <p>Currently</p> <pre>MTU0.TMDR1.BYTE = _00_MTU_NORMAL;</pre> <p>Correct</p> <pre>MTU0.TMDR1.BYTE = _00_MTU_NORMAL _10_MTU_BFA_BUFFER _20_MTU_BFB_BUFFER _40_MTU_BFE_BUFFER</pre> <p>Please add the missing code manually.</p>
7288	CodeGenerator plugin	<p>Code Generator for RX231, RX230</p> <ol style="list-style-type: none"> RX231 and RX230 devices more than 100pin have Open Drain setting for PORT J. But, Code Generator doesn't support Open Drain item on PORT GUI. RX230 devices have the following pins. But, Code Generator doesn't support items for them. PORT H cannot be set as I/O port and other multiplexed pin functions. PH0/CACREF, PH1/IRQ0/TMO0, PH2/IRQ1/TMRI0, PH3/TMCIO PinView (Pin List, Top View) is not supported about the following RX231 devices. 48pin: R5F52315CxNE, R5F52316CxNE, R5F52315CxFL, R5F52316CxFL 64pin: R5F52315CxND, R5F52316CxND, R5F52315CxFM, R5F52316CxFM, R5F52315CxLF, R5F52316CxLF 100pin: R5F52315CxLA, R5F52316CxLA, R5F52315CxFP, R5F52316CxFP At RX231 and RX230. When MTU2 is used with Complementary PWM Mode n, build error occurs because of no macro definition.

7336	CodeGenerator plugin	<p>KPIT GNURX toolchain:</p> <p>"interrupt" attribute keyword in r_cg_interrupt_handlers.h is missing from the following interrupt functions.</p> <p>Please add keyword "interrupt" to attribute of prototype declaration.</p> <p>example:</p> <pre> {{{void r_tmr_cmia0_interrupt(void) __attribute__((interrupt))}}} </pre> <p>RX113 CMT,CMPB,TMR,SCI,RIIC</p> <p>RX23T S12AD,CMPC</p> <p>RX231 DMAC,ELC,TPU,TMR,CMT,SCI,RIIC</p> <p>The problem of missing of "interrupt" is, the interrupt function returns by the mnemonic "RTSD".</p> <p>The interrupt function should return by "RTE".</p>
7434	CodeGenerator plugin	<p>RX230, RX231, RX23T Code Generator</p> <p>There is a build warning when using CC-RX toolchain project.</p> <p>Because Code Generator adds the unnecessary section "FIXEDVECT" into Linker option.</p> <p>Warning Message: W0561100: Cannot find "FIXEDVECT" specified in option "start"</p>
7641	Memory Usage plugin	<p>RX71M and RX64M project cannot display the RAM/ROM usage information in the memory window.</p> <p>After users select the RX71M project, then select another projects, the ROM/RAM usage cannot be displayed either.</p>
7724	CubeSuite+ importer/exporter	<p>""Problem""</p> <p>Regarding the CC-RL project:</p> <p>Export project does not output the following combination option correctly.</p> <ul style="list-style-type: none"> * Specify [Linker]>[Input]>"Relocatable files, object files and library files" * Specify [Linker]>[Input]>[Advanced]>"Use custom linkage order"

7849	CodeGenerator plugin	FIT modules cannot be uninstalled from the project when executing source code in FIT configurator after removing FIT module from the selected modules list in FIT configurator. To uninstall FIT modules from your project, remove the folder of each FIT module you want to uninstall manually in the project explorer.
------	----------------------	--

7. Open issues in 4.1.0.12

ID	Component	Description
874	GDB server RX	<p>Execution Address Eventpoints with trigger count do not work with Breakpoints on Segger RX.</p> <p>Setting an execution address eventpoint with a trigger count on Segger JLink RX62N is not possible if any breakpoints exist, including the default at main.</p> <p>If an execution address eventpoint with a trigger count is set with a breakpoint both the eventpoint & the breakpoint do not function. Multiple breakpoints are set then only 1 does not work. Additional eventpoints function as normal.</p>
1486	Application	Breakpoint properties do not work when set in the CDT dialogs. For example using the filter operation and removing the breakpoint for the process being debugged.
1616	RX GCC build plugin	The options of a Build Configuration were not correct after specifying Multiple Configurations... functionality.
1642	Application	<p>Erase flash on start-up option on RL78 should be executed once.</p> <p>When e2studio connects successfully to RL78 target and erases the flash, this option should return to false, so that flashing is not done every time target is connected.</p>
1778	Application	<p>When setting the 'Internal Flash Memory Overwrite' debug option, it is possible to exceed the maximum number of non-continuous memory blocks supported. No warning is given if this limit is exceeded.</p> <p>When setting this option ensure the limit (16 for RX devices) is not exceeded.</p>
1808	HEW Project Converter	<p>Import a HEW RX project in e2studio using the HEW project importer.</p> <p>Check: Project > Properties > Compiler > Source > Include file directories. Paths are duplicated</p>
1859	GDB server RX	Program execution stops inside a range when Range Exclusive is specified in the address settings for OA event points.
1889	Application	<p>Due to file extension issue with .s and .S and due to known bug, e2studio users will not be able to use .s or .S effectively to pre-process assembly files that need GCC. Hence we suggest renaming these files to use:</p> <p>.S -> .asm</p> <p>.s -> .src</p>
1982	CCRX Build plugin	For Renesas CCRX the Converter phase gets invoked even when using the external linker subcommand option. This should not happen.
2299	RX GCC build plugin	<p>It is possible for .c and .C files to be treated in the same manner in certain situations which is not correct.</p> <p>(.C extension is changed to .c during project build).</p>

2416	Project Generation	<p>Use of duplicate register is allowed for RXC project generation.</p> <ol style="list-style-type: none"> 1. Create RXC project 2. Go to RXC Global option page, select "ROM" -> "R8" 3. Select the same value for any other register (e.g. "RAM" -> "R8"), it gives error message and prevents the user from project creation. 4. Now select "R8" again for "RAM" register. It doesn't show any error message and allows user to create the project.
2486	Profile plugin	Acquiring profile results can take a very long time following RX Simulator debugging.
2537	Performance Analysis	<p>Performance Analysis: Performance time is not updating following changes to start and stop performance addresses.</p> <p>For the G13 IECube it supports one run/break timer. Currently e2 studio is setting the support to 3.</p>
2716	GDB server RL78	Before PC events on IECube has a hard coded limit of 4.
2762	Application	When using assembly code within a C source file, Codan errors can be observed in the editor. Even though the project builds successfully.
2859	CDT	When using IAR projects the SFR names (e.g. PIOR1_bit.no1) are not understood correctly in the editor.
3389	Application	When debugging files with the same name show source addresses even though it may not be correct for the file in question. The full file path is not considered just the filename and current debug context. This can lead to e2 studio showing addresses unnecessarily.
3526	Profile plugin	In some cases when using RX with the CCRX compiler the profile view does not display the source file name and path in the window.
3626	Trace plugin	Snapshot trace - adding IO register eventpoints increases the data shown in the trace view, but as they were removed there was no change in the data shown.
3663	Application	<p>With 2 targets connected, clicking between the two debug contexts in the Debug View will update the source addresses in the open Editor files.</p> <p>However changing debug context does not seem to get detected if clicking on the top-level of the debug context rather than on the lower level.</p>
3928	CCRX Build plugin	<p>By default the e2 studio editor character code is set to UTF-8. This means it is possible to enter characters that are then not supported by default by the CCRX toolchain.</p> <p>CCRX default input is SJIS.</p> <p>To enable UTF-8 for the toolchain you must first select C99 support.</p>
3950	Application	<p>Breakpoints cannot be unset within the editor when code is #ifdef out.</p> <p>These breakpoints will need to be removed from the breakpoints plugin.</p>

4189	Project Generation	It is not possible to build project which has more than 98 characters in its project name.
4191	GDB server RX	When using Segger JLink, with the "Force Hardware Breakpoints" debug option enabled, adding more than the maximum amount of breakpoints for a device and then removing some can lead to none of the breakpoints firing. Workaround is to add a single breakpoint back in to trigger the reapply of all others.
4350	CubeSuite+ importer/exporter	When importing a project from CubeSuite+ to e2 studio the "toolchain version is changed" dialog is always displayed. This is because the version string in imported project file and the toolchain information in e2 studio does not match. Ignoring this dialog and continuing should result in a successful import.
4438	Application	The e2 studio debugger (GDB) does not deal correctly with this RL78 mnemonic. It uses the wrong instruction code: Mnemonic: DIVWU Instruction code: (Wrong) CEFB04 (Correct) CEFB0B
4450	CCRX Build plugin	Linker section settings of Renesas toolchain are not getting saved for multiple configurations.
4492	Application	The Module View of e2 studio does not display any information when an executable which includes debug information was downloaded to the target.
4515	CCRX Build plugin	When building projects with CCRX that are in deep directory structures it is possible to experience build issues. e2 studio is unable to build projects which create command lines greater than 8191 characters.
4597	Application	In some cases when a before PC eventpoint is set just after a break point, the program execution will not stop at the address the eventpoint is located at.
4607	GDB server	When sub menu "Add Watchpoint" is performed from a Memory view, it seems to have been registered correctly in the Breakpoints view even if there is an error condition. An error occurs by "Add Watchpoint", when the maximum number of events was exceeded, or when a ROM area is specified.
4783	Performance Analysis	The option to Reset timer before each run, which is setup on the "Performance Analysis" dialog box is not reflected for RL78. The specification for RL78 is that the values are reset all of the time so the option has no meaning.
4819	CCRX Build plugin	Individual compile is not execute when Level2 is specified at the "Perform inter-module optimization".
4869	Memory View plugin	The "Memory" view always opened on launch of a debug session. It should not be re-opened on launch if it has been closed in the previous debug session.

4982	GDB server RX	When a data access event for RX is set with the data mask value as 0, the comparison will be treated as "Equals" and the data mask value will be treated as 0xFFFFFFFF.
5041	CodeGenerator plugin	<p>Code Generator can delete user code between /* Start */ End comments in some situations.</p> <p>Using the code generator if the following code is placed in the main function:</p> <pre>//if(data_in!=0xAA){</pre> <p>on a line by itself, all of the main code will be removed when Generate Code button is pressed.</p> <p>The key issue is that the { brace is on the same line as the coment.</p>
5083	CubeSuite+ importer/exporter	Folder level options are not converted correctly
5124	Application	Active configuration lost while importing project (which is exported as file system).
5171	CCRX Build plugin	Files included in the Pre-include build options are not analyzed for the pre-processor statement in the editor. This can give the impression that code is not included in the build when it is.
5179	CubeSuite+ importer/exporter	<p>When CubeSuite+ project imports to e2 studio, Build cannot perform sometimes.</p> <p>[Workaround]</p> <p>Please add the <root folder> to "C/C++ General -> Paths and Symbol -> Source Location"</p>
5201	Application	<p>If you create a project and debug session for a GDB simulator before executing a hardware debug session it will fail. This is because the debugger support is not unpacked until a hardware debug session is used.</p> <p>To work around setup and launch a hardware debug session. You do not actually need hardware to do this.</p>
5290	CCRX Build plugin	<p>When you add a new configuration, please do not specify 'Default Configuration' as a configuration used as a base.</p> <p>If you specify the 'Default Configuration', the configuration which does not operate correctly is created.</p>
5467	Memory View plugin	Settings in the 'Format' dialog (Memory view) are not restored.
5547	GDB Server RH850	To use the data access events as trace start, trace stop or trace record for RH850 with E1 emulator, please do not use the "Compare Settings" condition for the event.

5551	Application	If the maximum number of break points are used for RX with E1/E20 emulator, the connection or the program execution may fail. In this case, please reduce the using break points.
5632	Multicore	When using multicore projects the Debug View may show an incorrect name for the second loaded module (as a duplicate of the first)
5637	Multicore	For RH850 multicore devices, disassembly result may be different from the expected. In this case, please refresh the view after changing the debug context to the other PE.
5668	Coverage plugin	In some cases when using the Coverage facility with the RL78 IECUBE some lines are shown as 'branch' or partial coverage when they should be 100% covered.
5669	GDB server	An invisible breakpoint is left in the project following a 'Move To Line' operation. Program execution continues to halt at this location once the Move to Line operation has been performed.
5721	CDT	When modifying code that changes the line an already set breakpoint is located at the breakpoint is not moved according to the modification.
5770	Application	RX targets and IO registers greater than 1 byte. e.g. winA 0x88028 winB 0x8802a View register in both IO view and register view. Value in memory view is reversed. This is because the IO, (like all RX memory for little endian targets is reversed).
5852	Application	PC set in the debug configuration is not set following launch for the Renesas RX and GDB RL78 simulators.
5911	DS-5 importer	The current DS-5 importer in e2 studio imports KPIT GNU "Application" project types only. Other projects cannot be imported at this time.
6208	GDB server RX	When debugging with RX there are problems with setting breakpoints when the hardware breakpoint resources have been exhausted and the software breakpoint setting also fails. In this case the breakpoint appears to be valid but the debugger will not stop. This can often be seen when the option "Program re-writes internal Data Flash" is set to yes. As this means software breakpoints cannot be set.
6350	Application	NullPointerException is observed when adding a custom configuration and selecting the same configuration within the 'Multiple Configuration' selection at the same time. This issue only occurs if user has not applied after creating new configurations: https://bugs.eclipse.org/bugs/show_bug.cgi?id=352047
6394	GDB server RX	Trace Record event point does not filter correctly with Segger RX63N.

6408	Debug Configuration	<p>When User boot mode is selected at the setting for Mode pin in CPU Operating Mode, the warning for USB boot program is displayed even if the device does not have USB boot program.</p> <p>Please click 'yes' if the device does not have USB boot program.</p>
6450	Application	<p>When "Prevent debugger from re-writing on-chip Program ROM" is checked and "Force Hardware Breakpoints" is set to No setting breakpoint fails and the program will not execute.</p>
6463	Application	<p>Memory view requires manual refresh to see changes when downloading auxiliary file.</p>
6484	Application	<p>Additional build tabs contributed by other third party tools can be hidden by e2 studio. Â This is caused by Renesas/KPIT build plugins replacing the standard build settings page with a custom one.</p>
6529	CDT	<p>After restart on occasion the disassembly window can be empty. Refreshing the window or stepping works around the problem.</p>
6549	GDB server RX	<p>The Profile View 'Execution Time' and 'Average Execution Time' columns are showing as zero after suspending the current debug session (for all targets).</p>
6557	GDB Server RH850	<p>Breakpoints are not always being cleared completely when a breakpoint is removed.</p>
6566	Real-time Watch	<p>In some situations the RH850 multicore real-time expression update does not work.</p>
6605	Event points plugin	<p>The enable state of eventpoints for any debug configuration is not restored when the debug configuration is launched for the first time after e2 studio is started.</p> <p>In subsequent launches the eventpoints are enabled/disabled appropriately.</p>
6616	Event points plugin	<p>When adding a new Data Access eventpoint, the Compare value (on the Data Access Settings tab) is always converted to hex and subsequently displayed in hex even if the value entered does not include an 0x prefix.</p>
6657	Coverage plugin	<p>If the workspace is copied or moved from the original folder, coverage information may not be displayed.</p> <p>Please re-build the program in the new workspace.</p>
6701	GDB server RX	<p>For RX devices, when 'step' command is invoked for WAIT instruction, GDB might report an error.</p> <p>Please use 'resume' command for WAIT instruction instead.</p>
6704	Profile plugin	<p>For RZ/T1 target a user can select Profile View. When selecting button 'Turn Profiling On' this is allowed to be enabled although this is not supported.</p>
6817	Waveform plugin	<p>If address of variable is changed then this address should be updated in waveform view as well, but it is not so.</p>
6852	Project Generation	<p>Combination of "C++ project" and "CC-RL" toolchain is selectable.</p> <p>But, "CC-RL" toolchain does not support "C++ project".</p> <p>So, do not select the combination of "C++ project" and "CC-RL" toolchain.</p>

6859	CDT	In some cases after reload symbols are not being updated correctly. Appears to be related to caching with CDT. GDB symbol information is correctly updated, and expressions which directly access fields in structures updated correctly, but overall structures are not correct.
7005	Application	<p>Debugging with the RL78 GDB simulator with the IAR project generators is not straight forward.</p> <p>The default IAR debug configuration uses the GDB executable name "GDB".</p> <p>This launch will not work and you need to point it at "rl78-elf-gdb.exe" included in the e2 studio debugcomp directory.</p> <p>However if you have not launched a Renesas debug configuration it won't be present. On the first launch of a Renesas debug configuration for RL78 the file is uncompressed from the package zip file.</p> <p>So to work around you need to launch a RL78 E1 session first so the GDB application for RL78 exists.</p>
7057	Event points plugin	When adding an event point to an external source code file. (File added using "Link to file in the file system" option). There can be problems adding the event point in this case.
7277	IAR plugins	<p>In some cases the IAR project importer does not perfectly import all set build options.</p> <p>One example is the -HFF command line option that can be specified in the command line options text box for the linker.</p>
7298	Application	<p>When font size is changed as magnified, some of components of the dialog can be hidden with magnified fonts.</p> <p>In this case, please resize and expand dialog size.</p>
7305	Application	The build throws an exception when setting '-no-keep-memory' and '-mrelax' options at the same time for a GNURX project.
7333	Real-time Watch	<p>When using the RX Simulator with real-time expressions if you use 1ms real-time interval the expression view goes blank. On suspend, e2 studio appears to hang while messages are processed.</p> <p>Reverting the interval to 10ms works well.</p>
7351	Trace plugin	Trace view should maintain Filter and Find settings to each ADM debug context. When changing debug session in [Debug] view, Filter and Find settings is set to default value.
7355	GDB server RX	<p>When connecting to RX63x, RX64x, RX7xx, RX2xx, or RX1xx with user-boot mode, it will fail.</p> <p>Please do not use user boot mode for these devices.</p>
7380	GDB server RX	<p>When connecting with RX simulator, Profile view does not show any information.</p> <p>Profile view sometimes show some information, it is not correct information.</p>

7403	CDT	The setting 'Use a fixed build configuration' in the dialog, Properties->C/C++ General->Indexer is not saved when the user checks it.
7412	GDB server RL78	When using RL78 the HL register value cannot be modified in some circumstances. This will only occur when bank 0 is not selected. Changing HL value only ever causes Bank 0 HL to change. View will always show current bank value. Values not in bank 0 can still be changed by accessing bank registers directly.
7423	CDT	In some cases the disassembly view does not refresh correctly on suspend. When this problem happens the refresh operation does not fix the problem. To restore the functionality close and re-open the view.
7456	GDB server RL78	The option "Low voltage OCD board" in the debug configuration for RL78 E2 Lite is not supported. Please don't set this option to "Yes".
7457	GDB server RL78	The option "Hot Plug" in the debug configuration for RL78 E2 Lite is not supported. Please don't set this option to "Yes".
7468	GDB server RX	When using the RX Simulator the trace view does not show correct source and disassembly information when these two modes are enabled.
7491	Application	The Insert Spaces for Tab feature in the Eclipse editor does not work. This is an Eclipse platform issue.
7497	CCRX Build plugin	""Problem"" When a project which specifies MISRA-C option changed the toolchain version, the MISRA-C option is deleted. ""Workaround"" Please re-specify the MISRA-C option.
7498	Application	Multi-byte characters can cause a compilation failure when used as a build configuration name in e2 studio. Therefore, multi-byte characters should NOT be applied to debug/build configuration names. Note: This issue affect both for configuration management dialog and the configuration creation dialog of Optimization Assistant.
7508	Application	""Problem"" An error occurs by project operation when the character besides ASCII cord was used for the file name or the folder name. ""Workaround"" Please don't use the character besides ASCII cord for the file name or the folder name.

7524	GDB Server RZ	For RAM based RZ-T1 projects a re-download of code will trigger a reset that erases the RAM making further debugger operation impossible. The workaround is to instead disconnect and then reconnect.
7533	Performance Analysis	Performance Analysis view does not show time result (even 0) if the time taken is very short (less than 1 unit of the emulator or device).
7546	Smart Browser	<p>PDF file is associated with Microsoft Edge by default in Windows 10.</p> <p>However, Smart Browser and Smart Manual will not be able to recognize that the Microsoft Edge is associated with a PDF.</p> <p>Please install the PDF viewer such as Adobe Reader and specify the application of default to open the PDF file.</p>
7547	Smart Manual plugin	<p>PDF file is associated with Windows Edge by default in Windows 10.</p> <p>However, Smart Browser and Smart Manual will not be able to recognize that the Windows Edge is associated with a PDF.</p> <p>Please install the PDF viewer such as Adobe Reader and specify the application of default to open the PDF file.</p>
7570	Application	<p>lodefine.h files for RX230 and RX231 were incorrect about portj.</p> <p>st_portj.ODR0.BIT.B3 is incorrect.</p> <p>st_portj.ODR0.BIT.B6 is correct.</p> <p>Please correct it as follows.</p> <pre> ---<incorrect>----- struct st_portj { : union { unsigned char BYTE; struct { unsigned char :4; unsigned char B3:1; <-- B3 does not exist. unsigned char :3; } BIT; } ODR0; : } ----- ---<correct>----- struct st_portj { </pre>

		<pre> : union { unsigned char BYTE; struct { unsigned char :1; unsigned char B6:1; unsigned char :6; } BIT; } ODR0; : } </pre> <p>-----</p>
7572	TargetInformationTool	<p>GNURL78 (G10 - R5F10Y14): Project build fails for debug configuration when using the GDB simulator.</p> <p>G10 - R5F10Y14 has a small RAM area. We need to reduce the stack size limit. Reducing the stack size limit from 0x64 to 0x32 (i.e. modifying PROVIDE (stack_size = 0x64) to PROVIDE (stack_size = 0x32) in the linker script) builds the project successfully.</p>
7588	Application	<p>Start / Stop Function Settings for RL78 are sent once on connecting. If the address for start function or stop function is changed by building the program, please disconnect from target and reconnect again.</p>
7592	GDB server RL78	<p>For RL78 E2 Lite, please use RESET# for the pin which has multiple functions of both RESET# and PORT.</p>
7597	IAR plugins	<p>When cleaning a Synergy project which uses the IAR toolchain, the clean can fail with a "Command-line too long" error.</p>

7607	RL78 GCC build plugin	<p>When creating a GNU RL78 project for the RL78 G13 device. Changing the optimization settings can cause the -mmul option 'Use RL78 hardware multiply instructions for G13' the build settings.</p> <p>Re-visit the build settings and re-enable this option if it is desired.</p>
7619	CCRX Build plugin	<p>""Problem""</p> <p>When the [C/C++ General] > [Paths and Symbols] > [References] is specified, Build warning occurs. And, .x file is not created at the time of using Renesas Toolchain.</p> <p>""Workaround""</p> <p>When you'd like to use the project dependency, please specify a child project in [Project Reference].</p>
7628	CodeGenerator plugin	<p>When using the code generator on Turkish windows there can be an issue which can cause an exception.</p> <p>This is caused by the letter 'I' not being processed correctly within the code generator.</p> <p>Swapping to use English region solves the problem.</p>
7660	RL78 GCC build plugin	<p>Project build fails for RL78 GCC when adding the __far keyword in the code.</p> <p>To fix this issue, you need to add the PROVIDE (__rl78_abs__ = 0) macro in your RL78 linker scripts.</p>
7689	CCRX Build plugin	<p>When using the Renesas CCRX toolchain the -space option of linker cannot be specified.</p>
7720	GDB Server RZ	<p>The Cortex M3 does not stop at entry address when multicore debug is performed.</p> <p>When the debugger connects to the CM3 core, the CM3 core runs for a short time.</p> <p>The Segger J-Link log shows the Cortex M3 core is not halted and it runs for a few ms when the debugger connects to the CM3 core.</p>
7729	CDT	<p>Renaming header files within the e2 studio IDE can affect the ordering of the dependency scanning.</p> <p>After renaming the header file is modified to be inside <> instead of "" and is placed at the top of the file.</p>
7739	GDB Server RH850	<p>Real-time memory refresh for RH850 will terminate the program execution shortly.</p>

7755	Device Support RX	<p>Memory Usage view is not available with the projects for RX230 and RX231 groups.</p> <p>RX23T group's project may not able to obtain accurate results because address range 0x00004000 - 0x00004A7F is regarded as out of memory.</p> <p>Memory Region configuration features are not available for RX230 and RX231 groups.</p> <p>On RX23T group's project, address range between 0x00004000 and 0x00004A7F is hidden on configuration dialog.</p> <p>On RX634 group's project, address ranges of IO register are hidden.</p>
7761	Application	The linker map file for the RZ GNU can be generated as the wrong name when it is created.
7807	Performance Analysis	<p>Timer 1 and Timer 2 show same result value in Performance Analysis view although timer start event and timer stop event are different between Timer 1 and Timer 2.</p> <p>In this case, please use only Timer 1.</p>
7809	Event points plugin	<p>Some event points are sometimes duplicated in Event points view when re-connecting to debugger.</p> <p>In this case, please connect to debugger again or delete duplicated event points and create event points again.</p>
7818	HEW Project Converter	<p>[Problem]</p> <p>(Import project from HEW)</p> <p>When a project which the debugging option is specified by HEW is imported, the debugging option is lost.</p> <p>[Workaround]</p> <p>Please re-specify the debugging option to a project.</p>
7826	CodeGenerator plugin	<p>In the case where a workspace has several projects including Code Generator, the confirmation dialog to save Code Generator settings appears one time when exiting e2 studio, and settings for only the active project is saved.</p> <p>The Code Generator settings of other projects are lost. Please select [File]-[Save all] menu to save Code Generator setting of all projects before existing e2 studio.</p>

7830	CodeGenerator plugin	<p>Please declare the local variable in the top of user code area braces.</p> <p>E.g.</p> <pre>void main(void) { R_MAIN_UserInit(); /* Start user code. Do not edit comment generated here */ { // add uint8_t val1; // e.g. local variable uint16_t val2 = 8; // e.g. local variable val1++; val2++; while (1U) { ... } } // add /* End user code. Do not edit comment generated here */ }</pre>
7854	IO view plugin	<p>Some IORs registered in Selected Registers tab cannot be expanded in IO Register view. In this case, please refer to All Registers tab.</p>
7920	Trace plugin	<p>When you enable coverage for the RX64M or RX71M, the coverage view does not show the result.</p> <p>[Workaround]</p> <ol style="list-style-type: none"> 1. Open coverage view and set address range before connection. Set all address range as "enabled". 2. Connect the debugger and disconnect. 3. Change it from "disabled" to "enabled" and connect the debugger again. 4. Set all the source files as "disabled". 5. Run program and stop it. Then change the source file status from "disabled" to "enabled"

Renesas Synergy specific open items:

ID	Component	Description
6945	Renesas Synergy	<p>When using the Synergy configurator. If you rename a thread and generate code, a new thread_entry.c file will be created with template content, and old thread_entry.c file will remain in project.</p> <p>If you have edited thread_entry.c your changes are not moved to new file.</p> <p>The old file remains in project but will not be called.</p>
7111	Renesas Synergy	<p>In some cases when debugging with Synergy the expressions view can disagree with the underlying value of the variable in the memory view.</p> <p>To avoid this you can use the real-time memory feature or remove and add the variable back into the expressions window.</p>
7551	Renesas Synergy	#error is not reported as an error when building with the IAR toolchain. This can be resolved by enabling the GCC error parser.
7591	Renesas Synergy	When cleaning IAR Synergy projects it is possible for the clean to fail
7672	Renesas Synergy	<p>When building ThreadX source with IAR compiler the warning "Pa050, Non-native end of line" is generated on many source files.</p> <p>This is a known issue. If this behaviour is not desirable please suppress the warning in the IAR build settings.</p>
7756	Renesas Synergy	e2 studio only supports CMSIS packs which meet the 1.2 CMSIS pack specification.
7853	Renesas Synergy	<p>When using the Launchpad toolchain the linker script file is not set as a dependent file in the build.</p> <p>Changing the linker script does not cause a rebuild.</p>