

RZ/N1D Group

RZ/N1S Group

RZ/N1L Group

Application Note:
POWERLINK Quick Start Guide

RZ Family RZ/N1 Series

Preliminary

All information contained in these materials, including products and product specifications, represent information on the product at the time of publication and is subject to change by Renesas Electronics Corp. without notice. Please review the latest information published by Renesas Electronics Corp. through various means, including the Renesas Electronics Corp. website (<http://www.renesas.com>).

Notice

1. Descriptions of circuits, software and other related information in this document are provided only to illustrate the operation of semiconductor products and application examples. You are fully responsible for the incorporation of these circuits, software, and information in the design of your equipment. Renesas Electronics assumes no responsibility for any losses incurred by you or third parties arising from the use of these circuits, software, or information.
2. Renesas Electronics has used reasonable care in preparing the information included in this document, but Renesas Electronics does not warrant that such information is error free. Renesas Electronics assumes no liability whatsoever for any damages incurred by you resulting from errors in or omissions from the information included herein.
3. Renesas Electronics does not assume any liability for infringement of patents, copyrights, or other intellectual property rights of third parties by or arising from the use of Renesas Electronics products or technical information described in this document. No license, express, implied or otherwise, is granted hereby under any patents, copyrights or other intellectual property rights of Renesas Electronics or others.
4. You should not alter, modify, copy, or otherwise misappropriate any Renesas Electronics product, whether in whole or in part. Renesas Electronics assumes no responsibility for any losses incurred by you or third parties arising from such alteration, modification, copy or otherwise misappropriation of Renesas Electronics product.
5. Renesas Electronics products are classified according to the following two quality grades: "Standard" and "High Quality". The recommended applications for each Renesas Electronics product depends on the product's quality grade, as indicated below.

"Standard": Computers; office equipment; communications equipment; test and measurement equipment; audio and visual equipment; home electronic appliances; machine tools; personal electronic equipment; and industrial robots etc.

"High Quality": Transportation equipment (automobiles, trains, ships, etc.); traffic control systems; anti-disaster systems; anti-crime systems; and safety equipment etc.

Renesas Electronics products are neither intended nor authorized for use in products or systems that may pose a direct threat to human life or bodily injury (artificial life support devices or systems, surgical implantations etc.), or may cause serious property damages (nuclear reactor control systems, military equipment etc.). You must check the quality grade of each Renesas Electronics product before using it in a particular application. You may not use any Renesas Electronics product for any application for which it is not intended. Renesas Electronics shall not be in any way liable for any damages or losses incurred by you or third parties arising from the use of any Renesas Electronics product for which the product is not intended by Renesas Electronics.
6. You should use the Renesas Electronics products described in this document within the range specified by Renesas Electronics, especially with respect to the maximum rating, operating supply voltage range, movement power voltage range, heat radiation characteristics, installation and other product characteristics. Renesas Electronics shall have no liability for malfunctions or damages arising out of the use of Renesas Electronics products beyond such specified ranges.
7. Although Renesas Electronics endeavors to improve the quality and reliability of its products, semiconductor products have specific characteristics such as the occurrence of failure at a certain rate and malfunctions under certain use conditions. Further, Renesas Electronics products are not subject to radiation resistance design. Please be sure to implement safety measures to guard them against the possibility of physical injury, and injury or damage caused by fire in the event of the failure of a Renesas Electronics product, such as safety design for hardware and software including but not limited to redundancy, fire control and malfunction prevention, appropriate treatment for aging degradation or any other appropriate measures. Because the evaluation of microcomputer software alone is very difficult, please evaluate the safety of the final products or systems manufactured by you.
8. Please contact a Renesas Electronics sales office for details as to environmental matters such as the environmental compatibility of each Renesas Electronics product. Please use Renesas Electronics products in compliance with all applicable laws and regulations that regulate the inclusion or use of controlled substances, including without limitation, the EU RoHS Directive. Renesas Electronics assumes no liability for damages or losses occurring as a result of your noncompliance with applicable laws and regulations.
9. Renesas Electronics products and technology may not be used for or incorporated into any products or systems whose manufacture, use, or sale is prohibited under any applicable domestic or foreign laws or regulations. You should not use Renesas Electronics products or technology described in this document for any purpose relating to military applications or use by the military, including but not limited to the development of weapons of mass destruction. When exporting the Renesas Electronics products or technology described in this document, you should comply with the applicable export control laws and regulations and follow the procedures required by such laws and regulations.
10. It is the responsibility of the buyer or distributor of Renesas Electronics products, who distributes, disposes of, or otherwise places the product with a third party, to notify such third party in advance of the contents and conditions set forth in this document, Renesas Electronics assumes no responsibility for any losses incurred by you or third parties as a result of unauthorized use of Renesas Electronics products.
11. This document may not be reproduced or duplicated in any form, in whole or in part, without prior written consent of Renesas Electronics.
12. Please contact a Renesas Electronics sales office if you have any questions regarding the information contained in this document or Renesas Electronics products, or if you have any other inquiries.

(Note 1) "Renesas Electronics" as used in this document means Renesas Electronics Corporation and also includes its majority-owned subsidiaries.

(Note 2) "Renesas Electronics product(s)" means any product developed or manufactured by or for Renesas Electronics.

General Precautions in the Handling of the Product

The following usage notes are applicable to all products from Renesas. For detailed usage notes on the products covered by this document, refer to the relevant sections of the document as well as any technical updates that have been issued for the products.

1. Handling of Unused Pins

Handle unused pins in accordance with the directions given under Handling of Unused Pins in the manual.

— The input pins of CMOS products are generally in the high-impedance state. In operation with an unused pin in the open-circuit state, extra electromagnetic noise is induced in the vicinity of LSI, an associated shoot-through current flows internally, and malfunctions occur due to the false recognition of the pin state as an input signal become possible. Unused pins should be handled as described under Handling of Unused Pins in the manual.

2. Processing at Power-on

The state of the product is undefined at the moment when power is supplied.

— The states of internal circuits in the LSI are indeterminate and the states of register settings and pins are undefined at the moment when power is supplied.

In a finished product where the reset signal is applied to the external reset pin, the states of pins are not guaranteed from the moment when power is supplied until the reset process is completed. In a similar way, the states of pins in a product that is reset by an on-chip power-on reset function are not guaranteed from the moment when power is supplied until the power reaches the level at which resetting has been specified.

3. Prohibition of Access to Reserved Addresses

Access to reserved addresses is prohibited.

— The reserved addresses are provided for the possible future expansion of functions. Do not access these addresses; the correct operation of LSI is not guaranteed if they are accessed.

4. Clock Signals

After applying a reset, only release the reset line after the operating clock signal has become stable. When switching the clock signal during program execution, wait until the target clock signal has stabilized.

— When the clock signal is generated with an external resonator (or from an external oscillator) during a reset, ensure that the reset line is only released after full stabilization of the clock signal. Moreover, when switching to a clock signal produced with an external resonator (or by an external oscillator) while program execution is in progress, wait until the target clock signal is stable.

5. Differences between Products

Before changing from one product to another, i.e. to a product with a different part number, confirm that the change will not lead to problems.

— The characteristics of an MPU or MCU in the same group but having a different part number may differ in terms of the internal memory capacity, layout pattern, and other factors, which can affect the ranges of electrical characteristics, such as characteristic values, operating margins, immunity to noise, and amount of radiated noise. When changing to a product with a different part number, implement a system-evaluation test for the given product.

EtherCAT is registered trademark and patented technology, licensed by Beckhoff Automation GmbH, Germany.

Sercos is a registered trademark of Sercos International e.V.

Ethernet POWERLINK is the registered trademark of Ethernet POWERLINK Standardization Group (EPG).

CAN(Controller Area Network) : An automotive network specification developed by Robert Bosch GmbH of Germany

ARM is a registered trademark of ARM Limited (or its subsidiaries) in the EU and/or elsewhere. All rights reserved.

All registered trademarks or trademarks are the property of their respective owners.

Table of Content

1	Introduction.....	5
2	Features.....	6
3	Project Setup	7
3.1.	Requirements.....	7
3.2.	Hardware.....	7
3.3.	Sample Application.....	8
3.4.	Configuring the sample application	8
3.5	Running the sample application.....	9
	Setting up an POWERLINK PLC	18
	Revision History	23

4. Figures

Figure 3-1:	Serial Terminal settings RZ/N1.....	8
Figure 3-2:	IAR Configurations RAM and ROM for RZ/N1L	11
Figure 3-3:	IAR Workbench "Busy"-Window	12
Figure 3-4:	Changing Reset mode of RZ/N1L in Debug-ROM configuration	12
Figure 3-5:	Multicore Debug Option	15
Figure 3-6:	Multicore Debug Interface	16
Figure 3-7:	SPI connection of Synergy S7GS-SK (left) and RZ/N1L (right)	16
Figure 4-1:	Creating a new project in Automation Studio.....	18
Figure 4-2:	Adding the RZ/N device.....	19
Figure 4-3:	Configuration of the cycle time.....	20
Figure 4-4:	Setup cyclic data.....	21
Figure 4-5:	Show cyclic data	22

Tables

Table 1:	Development Tools required by POWERLINK device stack.....	7
Table 3-2:	PINs for SPI usage	17
Table 3-3:	GPIOs for SPI usage	17

1 Introduction

This document describes how to run *port GmbH's* POWERLINK on the RZ/N1 Series. It is possible either to run a standalone variant using only the CM3-core as single core, or to use two separate cores, communicating via Core To Core. Both cores feature the GOAL (Generic OS Abstraction Layer) which handles the communication of the cores and provides basic functionality e.g. timer handling.

The Ethernet POWERLINK protocol runs on CM3-core in both the standalone and the Core To Core variant. Its task is the communication with other operators, therefore the alias name of the CM3-core is communication core (CC) in this document.

In the Core To Core variant the user application is executed on a separate core, e.g. the Linux based CA7-core on RZ/N1D. This core is also named application core (AC). In the "standalone" variant, the user application is running on the communication core only (CC).

Please note that the software was tested using hardware version
EESS-0401-130-04 (RZ/N1D),
EESS-0401-131-03 (RZ/N1D-EB),
EESS-0401-141-02 (RZ/N1S),
EESS-0401-155-01 (RZ/N1L),
of the CPU and extension board.

Please note that the RZ/N1S requires at least hardware version EESS-0401-141-02 to work with the extension board correctly.

2 Features

The *port GmbH*'s POWERLINK stack via Core To Core provides the functionality of a controlled node (CN). It features:

- producing of Process Data Objects
- consuming of Process Data Objects
- Service Data Objects for client and server
- Dual LED support
- User Timer Event (goal main loop)

3 Project Setup

The following chapter describes the setup and usage of *port GmbH's* POWERLINK.

3.1. Requirements

Please extract the released archive to the workspace.

Please make sure the following components are installed on the computer:

Tool	Version
IAR Embedded Workbench for ARM	8.32.3.20228
IAR C/C++ Compiler for ARM	8.32.3.193
GCC	8.2.0

Table 1: Development Tools required by POWERLINK device stack

If you need logging, a terminal emulator like putty should be installed and configured to the correct USB serial interface of the RZ/N1 board. If no messages appear after the board is started than another serial port (from the 4 installed devices) must be tried.

3.2. Hardware

Please take care to follow the setup guidelines for the RZ/N1 Demo Board from the Linux and U-boot documentation - *RZN1x-Quick-Start-Guide.pdf*

Please follow these initial steps to setup the UART and DFU connection.

1. Connect the board to a PC via the UART and the DFU interface. After the driver for the device has been installed, additional serial ports will show up.
 - a. On Linux PCs, if you have no other serial-over-USB devices attached, this is */dev/ttyUSB2*.
 - b. On Windows PCs, open the *device manager* and look up for new USB Serial Ports on section *ports*. The RZ/N1D and RZ/N1S board uses the 3rd of the 4 COM ports.
2.
 - a. On Linux PCs, open a serial terminal e.g. with

```
cu -e -o -115200 -l /dev/XXX
```

Replace the "XXX" with the serial device where the UART of the board is connected to.
 - b. On Windows PCs, open a serial terminal program e.g. PuTTY and select the COM port where the UART is connected to. The following settings must be configured for the connection:

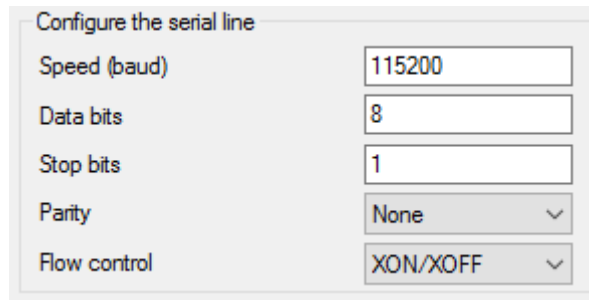


Figure 3-1: Serial Terminal settings RZ/N1

3.3. Sample Application

Several sample applications are provided for *port GmbH's* POWERLINK device stack. They show how to set up and use the stack. The following examples can be found in the folder *goal/appl/goal_epl/*.

- 00_rpc_cc – communication core (Core To Core variant only)
- 01_cn1 – simple IO application (Standalone variant or Core To Core variant for AC)

The design subfolder contains the sources of the POWERLINK configuration and object dictionary. Furthermore, the XDD device description and an EPL file for *port GmbH's* POWERLINK design tool, are placed here.

GOAL initialize POWERLINK on port 0 and 1 of the device.

3.4. Configuring the sample application

3.4.1.

Application behavior

The application behavior is controlled by the files *goal_appl.c*, *nmtslave.c* and *usr_ind.c* located at the POWERLINK application folder *goal\appl\goal_epl\01_cn1*. It creates a simple controlled node

3.4.2 supporting SDO and PDO read and write access.

Changing MAC Address

The default value of the RZ/N1 board MAC address is 02:00:00:00:00:01.

The MAC address can be set by the application during the initialization of the device by (re)-defining the weak function *goal_tgtBoardEthMacGet()*. This function is called by the Ethernet driver during its initialization to directly fetch an individual and non-default User-MAC-Address.

Like shown in the following example, the User-MAC-Address must only be copied to the address of the corresponding function parameter:


```

/** Default MAC address read function
 *
 * @retval GOAL_OK successful
 * @retval other failed
 */
GOAL_STATUS_T goal_tgtBoardEthMacGet(
    uint8_t *pMacAddr /**< pointer to driver MAC address */
)
{
    /** declare and initialize individual user device MAC address */
    GOAL_ETH_MAC_ADDR_T userDeviceMac = { 0x02, 0x00, 0x00, 0x00, 0x00, 0xaa };

    /** copy user MAC address to MAC address in Ethernet driver */
    GOAL_MEMCPY(pMacAddr, userDeviceMac, MAC_ADDR_LEN);

    return GOAL_OK;
}

```

Figure 3-2: Code example for setting User device MAC-Address

Changing Node ID

3.4.3 The default node ID of the device is 1. Changing the node ID is possible by editing the source code. The variable *EplNodeId* is set in the file *goal\appl\goal_epl\01_cn1\goal_appl.c*

3.5 Running the sample application

The RZ/N1D and RZ/N1S use the U-Boot bootloader for initial setup of the hardware and loading of the CM3 firmware. Additionally, the RZ/N1D U-Boot bootloader is used to boot the Linux Kernel. This chapter describes how to install the management software on the flash of the board. If no bootloader was yet installed on the RZ/N1D and RZ/N1S, please refer to the Linux and U-Boot documentation - Quick Start Guide for U-Boot and Linux - *RZ/N1x-Quick-Start-Guide.pdf*.

There are many similarities between the derivatives of the RZ/N1 series but some minor differences, too. Therefore, here is a more detailed explanation of how to run a sample application on each.

All standalone projects and the CC project of the Core To Core variant contain different workspaces for each board variant. The project workspaces ending on *_eb contain the configuration for the CPU Board together with the extension board (4 switch ports). The other project workspaces contain the configuration for working with the CPU Board only.

Please connect the device to the POWERLINK network, after the target initialization is done completely.

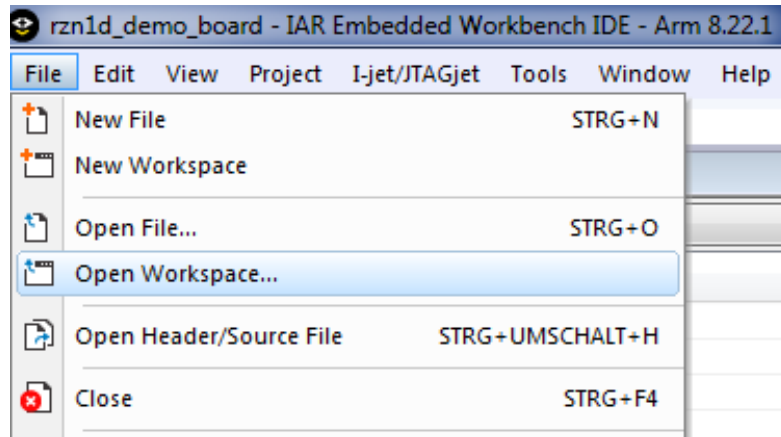
Standalone Variant – RZ/N1D and RZ/N1S

It is possible to load the code via debugger into RAM, which is a very fast approach to test the user application, or to flash the CM3 core. In both cases the applications are located at *goal\projects\goal_epl_lib* and must be built using IAR Embedded Workbench.

3.4.4.1. Loading application into RAM via IAR Embedded Workbench

To compile a project, follow these steps:

1. Start the IAR Workbench IDE.
2. Open a project via “File/Open Workspace”.



3. Go to the workspace folder and open it. In case the CPU board is used together with the extension board, please ensure to select the correct IAR-project.
4. Compile the project via “Project/Compile” or “Project/Rebuild all”.
5. Power up the device.
6. Open a serial terminal according to section 3.2.
7. Press any key on your keyboard to interrupt the bootloader.
8. Ensure to configure the U-Boot boot command to release the CM3 core after reset. This is done by the command:

```
setenv bootcmd "mw 0x04000004 1 && rzn1_start_cm3 && loop 0 1"
```

followed by

```
saveenv
```

and reset the board.

9. Connect the debugger to the system via the “Download and Debug” button of the IAR Workbench.
10. After the Debug view opened, click on the “Go” button.

3.4.4.2. Loading application into flash via dfu-util

The board uses the U-Boot bootloader for initial setup of the hardware and loading of the CM3 core firmware. This chapter describes how to install the compiled management software on the flash of the board. If no bootloader was yet installed on the board, please refer to the Linux documentation - Quick Start Guide for U-Boot and Linux - *RZN1x-Quick-Start-Guide.pdf*.

The following steps describe the installation of management software:

1. Connect a Linux PC to the board according to section 3.2.
2. Power up the board.
3. Hit any key to stop the autoboot of the U-Boot.
4. Type “*dfu*” in the serial terminal of the board and hit enter.
5. On a Linux terminal start the command

```
sudo dfu-util -a "sf_cm3" -D FIRMWARE.bin
```

Replace *FIRMWARE.bin* with the file name of the software to install. The binary is placed at the subfolder *Debug-RAM\Exe* of the IAR project folder.

6. When the download process is complete, press Ctrl+C on U-Boot.
7. If the autoboot command was already configured, go to step 10.
8. Set the autoboot command in the U-Boot:

```
setenv bootcmd "sf probe && sf read 0x4000000 d0000 90000 && rzn1_start_cm3 && loop 0 1"
```

9. Save the command to the flash:

```
saveenv
```

10. Reset the device.

Standalone Variant – RZ/N1L

3.4.5. The RZ/N1L does not use any bootloaders. If any application is stored in flash, it will be started automatically. Both, loading into RAM and flash can be done using IAR workbench.

1. Start the IAR Workbench IDE.
2. Open a project via "File/Open Workspace".
3. Go to the workspace folder and open it.
4. Compile the project via "Project/Compile" or "Project/Rebuild all".
5. Power up the device.
6. Open a serial terminal according to section 3.2.
7. Choose either the Debug-RAM or the Debug-ROM configuration. First is used for debugging via IAR, second is loading the application into the flash.

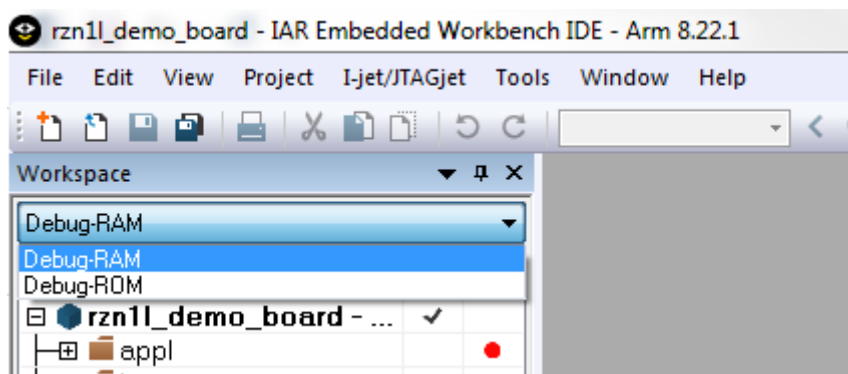


Figure 3-3: IAR Configurations RAM and ROM for RZ/N1L

8. Follow these steps for the Debug-RAM configuration
 - a. Compile the project via "Project/Compile" or "Project/Rebuild all".
 - b. Press and hold the devices software-reset button.
 - c. Click on "Download and Debug" and release the software-reset button as soon as the "Busy" window opens.

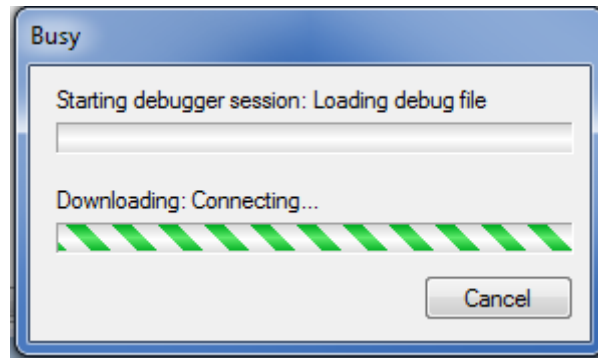


Figure 3-4: IAR Workbench "Busy"-Window

9. Follow these steps for the Debug-ROM configuration
 - a. Click on "Download and Debug".
 - b. Set reset mode to "Hardware" and press "Make & Restart Debugger".
 - c. Check, if the reset mode is still on "Hardware". If not, repeat the previous step.

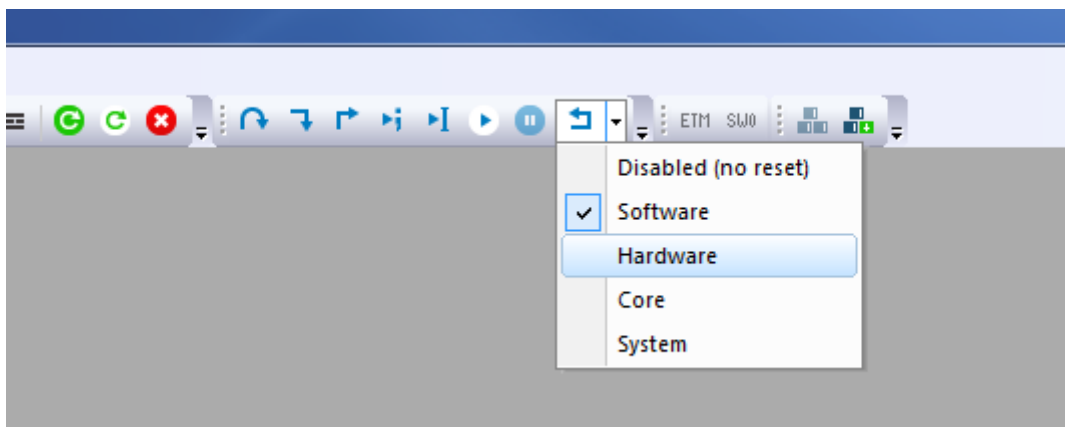


Figure 3-5: Changing Reset mode of RZ/N1L in Debug-ROM configuration

- 3.4.6. 10. After the Debug view opened, click on the "Go" button.

Core To Core variant – RZ/N1D (Communication Core)

The binary file for the CM3 core is located at the board type related IAR Embedded Workbench folder `goal\projects\goal_epl_rpc\00_goal_rpc\` respectively `goal\projects\goal_epl_rpc\00_goal_rpc_demo\`.

Load the binary file to the flash according to the following steps.

1. Connect a Linux PC to the board, according to section 3.2.
2. Power up the board.
3. Hit any key to stop the autoboot of the U-Boot.
4. Type "`dfu`" in the serial terminal of the board and hit enter.
5. On a Linux terminal start the command
`sudo dfu-util -a"sf_cm3" -D FIRMWARE`
Replace `FIRMWARE` with the file name of the software to install.
6. When the download process is complete, press Ctrl+C on U-Boot.
7. If the autoboot command was already configured, go to step 10.
8. Set the autoboot command in the U-Boot:

```
setenv bootcmd "sf probe && sf read 0x4000000 d0000 90000 && sf read 0x8ffe0000 b0000 20000 && sf read 0x80008000 1d0000 f00000 && rzn1_start_cm3 && sleep 4 && bootm 0x80008000 - 0x8ffe0000"
```

9. Save the command to the flash: *saveenv*
10. Reset the device.

It is also possible to debug the RZ/N1D communication core. The steps accorded to section 3.4.4.1, but the boot command has to be set to

```
setenv bootcmd "mw 0x04000004 1 && rzn1_start_cm3 && sleep 20 && sf probe && sf read 0x80008000 1d0000 f00000 && sf read 0x8ffe0000 b0000 20000 && bootm 0x80008000 - 0x8ffe0000"
```

This delays the boot of Linux about 20 seconds. Meanwhile the CM3 core has to be started.

Core To Core variant – RZ/N1D (Application Core)

- 3.4.7. The user application runs on the Linux system of the CA7. Its binary must be created by GCC and downloaded to the RZ/N board manually.

Note: It is recommended to maintain a consistent boot order of the communication and the application core. Therefore it is advised to always start the R-IN engine / Cortex-M3 (communication core) first and boot the Cortex-A7 (application core) after the communication core has finished its initialization.

3.4.7.1. Building and downloading the user application

The following steps describe, how to build a binary and download it to the RZ/N1D board.

1. Navigate with the terminal of a Linux PC to the project of the application core at *goal/projects/goal_epl_rpc_lib/01_io_data/gcc*.
2. Start the build process by executing the Makefile by typing
make
3. Select as target platform "rzn_a7_demo_board".
4. Power up the board and wait till Linux booted successfully.
5. Copy the created binary file *build/rzn_a7_demo_board/goal_rzn_a7_demo_board.bin* to the RZ/N1 board by e.g. secure copy (scp).
6. Copy the application corresponding library *goal/projects/goal_epl_rpc_lib/00_lib/gcc/build/rzn_a7_demo_board/libgoal_rzn_a7_demo_board.so* to the RZ/N1 board by e.g. secure copy (scp).
7. Start the binary file on the target by typing the commands
export LD_LIBRARY_PATH=.
./goal_rzn_a7_demo_board.bin -i eth0

The GOAL setups the connection to the communication core via core to core and starts the user application. The initialization is done when the log message "GOAL initialized" is printed at the terminal, if logging is activated.

3.4.7.2. Auto start the user application

The Linux Kernel can start the user application on the CA7 automatically with the help of the start script

S99goal_app.sh

This script is placed at *linux_ctc/* of the release. Download the file to the CA7, like the user application binary, and place it at */etc/rc5.d/* if this file is not present. Please ensure, that *goal_rzn_a7_demo_board.bin* and its library is placed at */home/root/*.

Disabling the start script is possible by adding the boot argument *GOAL_APPL_LINUX_PREV*.

1. Power up the board.
2. Hit any key to stop the autoboot of the U-Boot
3. Add the boot argument for preventing the application autoboot by

```
setenv bootargs "${bootargs} GOAL_APPL_LINUX_PREV"
```

4. Save the command to the flash by:

```
saveenv
```

5. Reset the device

Reenabling the start script is possible by deleting the boot argument *GOAL_APPL_LINUX_PREV*.

1. Power up the board.
2. Hit any key to stop the autoboot of the U-Boot
3. Display the environment by

```
env print
```

4. The latest boot arguments are listed at the line *bootargs=*
5. Copy these arguments, except *GOAL_APPL_LINUX_PREV* and paste them at <paste> on the following command

```
setenv bootargs " <paste>"
```

6. Save the command to the flash by:

3.4.8.

```
saveenv
```

7. Reset the device

Core To Core variant – RZ/N1S

Similar to the standalone variant the core to core variant is also capable to run from the RAM while debugging the application core and the communication core at the same time.

The IAR Embedded Workbench runs two instances of the IDE, one for each core, in a master-slave-system to share the access to the board keeping both instances synchronous.

The usage and setup of the multicore debugging will be exemplary described for the CN1 example running on the application core under ThreadX using the CM3 for handling the Ethernet POWERLINK

stack as the communication core.

Note: It is recommended to maintain a consistent boot order of the communication and the application core. Therefore it is advised to always start the R-IN engine / Cortex-M3 (communication core) first and boot the Cortex-A7 (application core) after the communication core has finished its initialization.

To run the core to core variant of the CM1 example please perform the following steps:

1. Open the corresponding AC IAR project workspace, e.g.:
`projects\goal_epl_rpc\01_cn1\iar\renesas\rzn1s_a7_threadx\rzn1s_a7_threadx.eww`
2. Open the project options and navigate to the subcategory “Multicore” in the category “Debugger”.
3. Enable Multicore master mode and select the slave workspace to use. Please note, that the “slave project” and the “slave configuration” is already preconfigured for the GOAL slave projects.

The core to core variant requires the `00_goal_rpc_demo` project running on the CM3 which is the same project as for the core to core variant under Linux on the RZ/N1-D but for the RZ/N1-S demo board. This slave application can be used also for the other POWERLINK application core demo applications.

The slave workspace `rzn1s_demo_board.eww` is located in the following project directory:

`projects\goal_epl_rpc\00_goal_rpc_demo\iar\renesas\rzn1s_demo_board\`

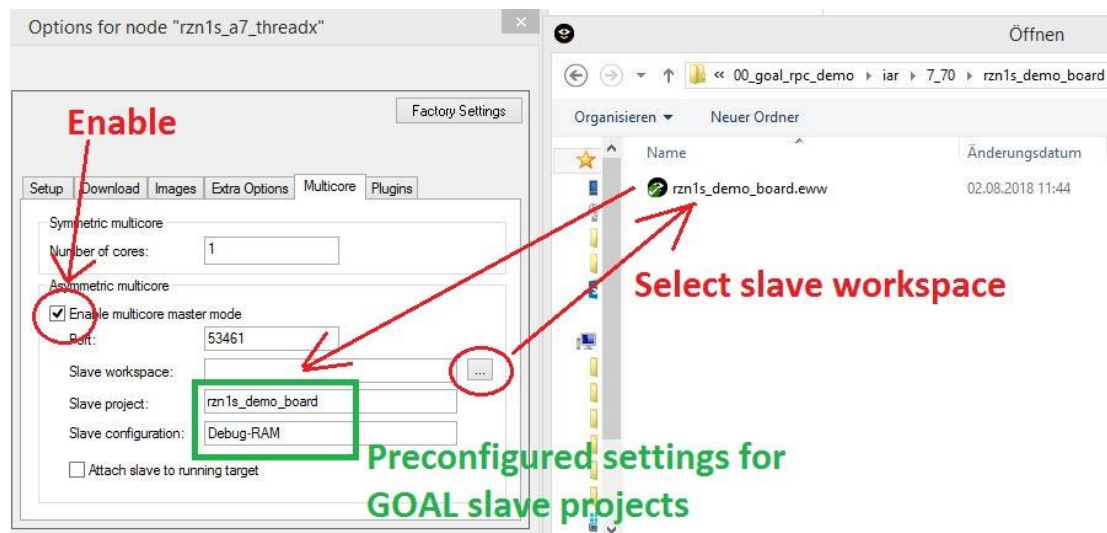


Figure 3-6: Multicore Debug Option

When using the RZ/N1S expansion board, please ensure to select the correct CC project located at the projects `rzn1s_demo_board_eb` directory. Additionally, adjust the entry “Slave project” in the subcategory “Multicore” to `rzn1s_demo_board_eb`.

4. Compile the project via “Project/Compile” or “Project/Rebuild all”.
5. Press the “Download and debug” button or Ctrl+D
This will cause IAR to open the slave workspace as an additional IAR workbench instance, builds the slave project and load both – the master and the slave project – to the board sharing the debugger.
6. When the software from both instances is loaded to the board and the IDE switches in the

debug mode an additional dialog for multicore debugging is available giving the following options:

- start all cores at once
- stop all cores at once
- toggle execution mode

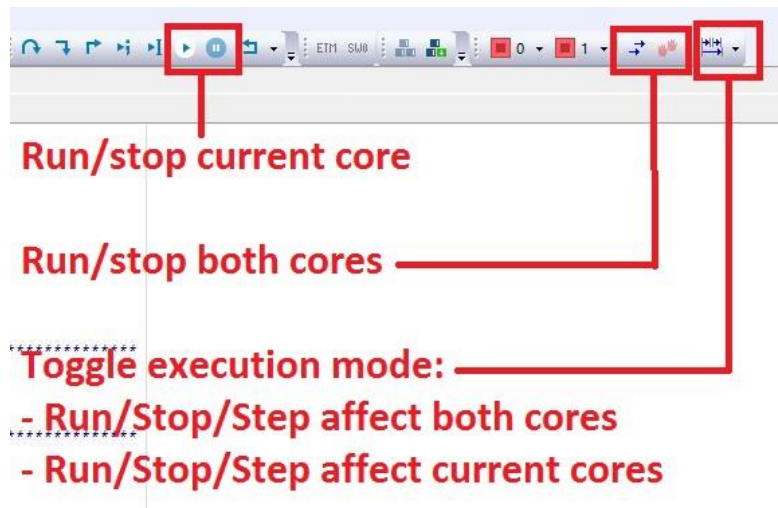


Figure 3-7: Multicore Debug Interface

3.4.9. Core To Core variant – RZ/N1L (Communication Core)

The binary file for the CM3 core is located in the board type related IAR Embedded Workbench folder *goal\projects\goal_epl_rpc\00_goal_rpc* respectively *goal\projects\goal_epl_rpc\00_goal_rpc_demo*.

Please refer section 3.4.5 for building and downloading the Core To Core variant on RZ/N1L. It is handled the same as the standalone variant.

For mult core projects, the RZ/N1L is used as communication core, while the e.g. Synergy S7GS-SK is used as application core. Data exchanging is done by SPI. The boards are connected as followed.

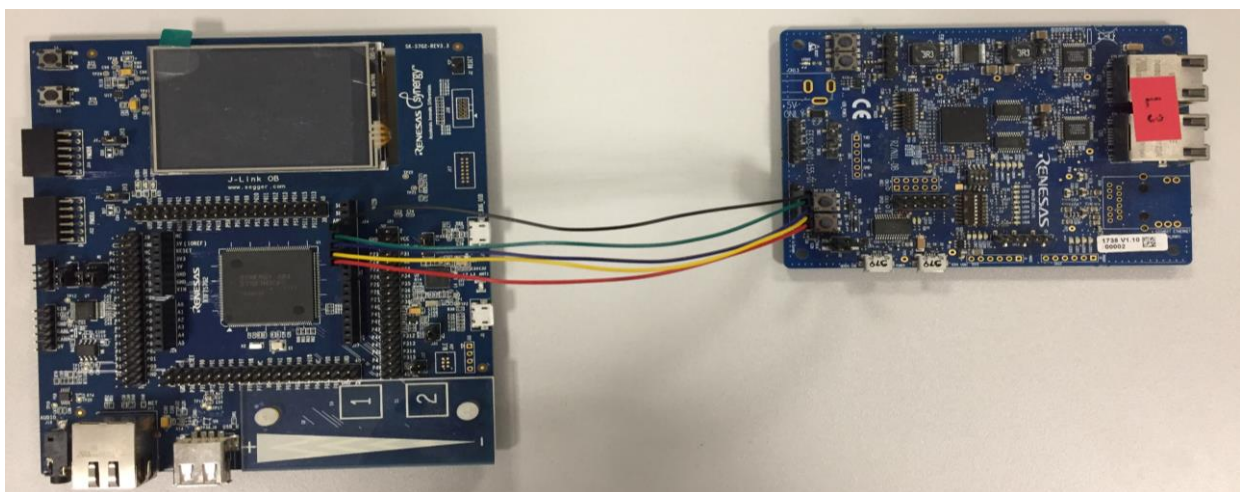


Figure 3-8: SPI connection of Synergy S7GS-SK (left) and RZ/N1L (right)

function	color	S7GS-SK	RZ/N1L
GND	Black	J24-7	CN20-5
SPI Clock	Green	J24-6	CN20-4
MISO	Blue	J24-5	CN20-3
MOSI	Yellow	J24-4	CN20-2
SPI chip select	Red	J24-3	CN20-1

Table 3-2: PINs for SPI usage

Please note the synergy quick start guide for setup the named core. By default, the RZ/N1L uses the SPI channel 5 and the following GPIOs.

GPIO	Usage
62	SPI clock
63	MOSI
64	MISO
65	SPI chip select

Table 3-3: GPIOs for SPI usage

Note:

The board supports only SPI mode 1 and 3. Please set the SPI mode to 3 by defining *GOAL_GLOB_MA_SPI_ID_0_MODE_3* in *goal/goal_global/goal_global.h* to 1.

```
#define GOAL_GLOB_MA_SPI_ID_0_MODE_3 1    /**< set SPI mode 3 on MA ID 0 */
```

Setting up an POWERLINK PLC

The POWERLINK via Core To Core sample application is ready to communicate with a PLC. The provided XDD device description is required to create a connection.

- This chapter shows how to set up the B&R PLC 5PC600.SX01 with the program Automation Studio (V3.0.90.21). The user is expected to have knowledge about his PLC and the utilized software.

First a new project must be created for the PLC by the *New Project Wizard* with *File* → *New Project...*

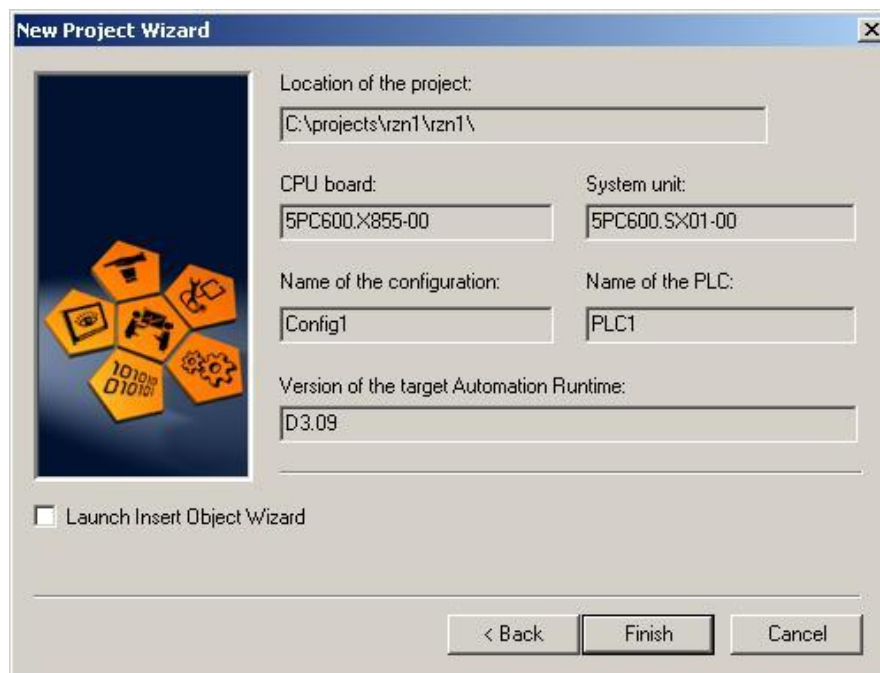


Figure 4-1: Creating a new project in Automation Studio

First, name the project and select its path. On the next step, setup the hardware configuration by e.g. online identification. In the end, there is a summary of the new project, like shown in picture Figure 4-1.

The XDD device description must be imported by selecting

Tools → Import Fieldbus Device...

Navigate to *goal\appl\goal_epl\01_cn1\design* and open the appropriate file. There will be some log messages at the Output window showing the import state. Restart the Automation Studio to finalize the import.

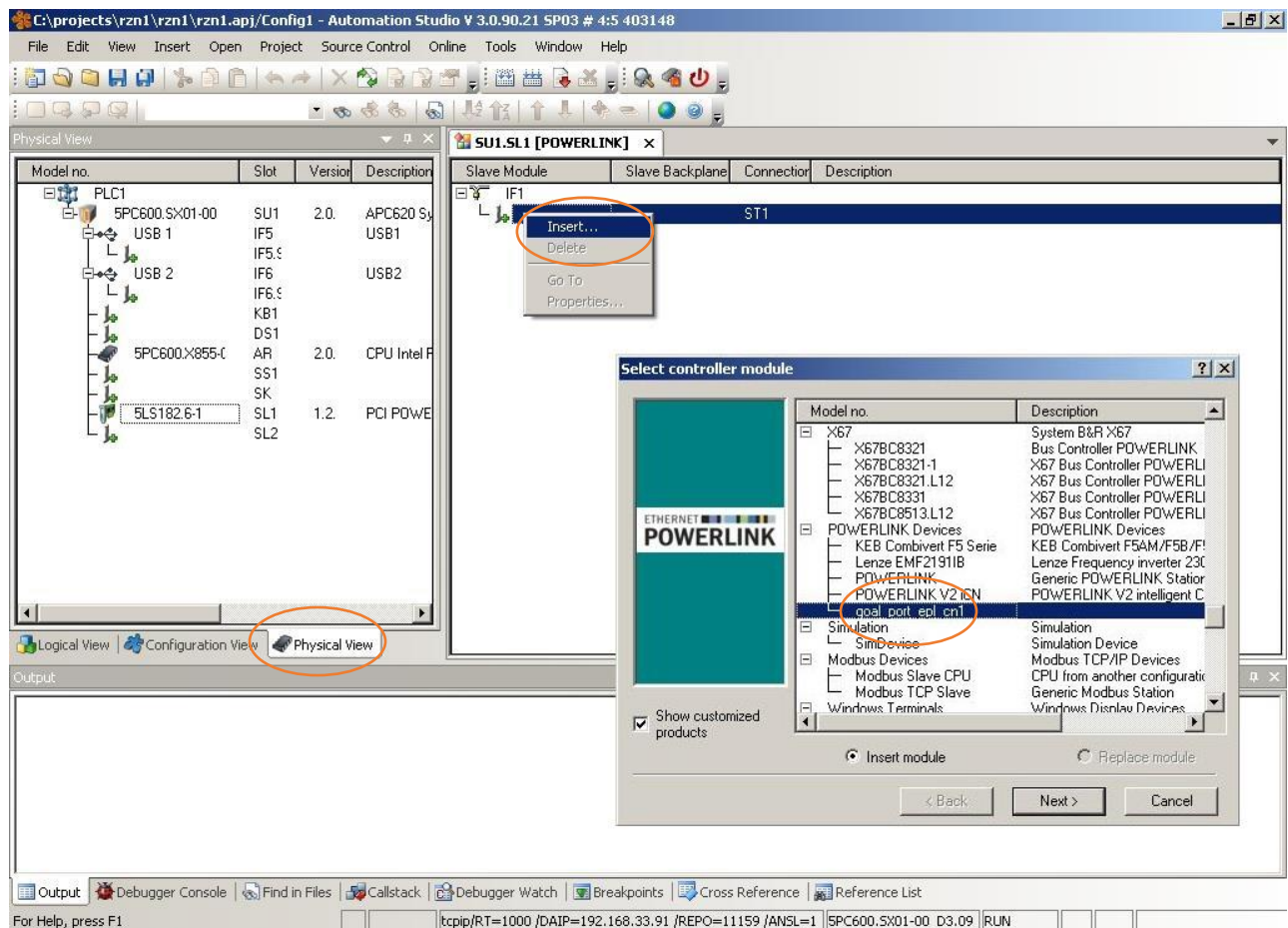


Figure 4-2: Adding the RZ/N device

Select the Physical View and insert a new controller module as shown in Figure 4-2. Select the imported POWERLINK device. Enter the node number of the application, or keep the default value 1. Finish the importation by the *next*-button.

The displaying and editing of the Ethernet configuration, e.g. PLC IP address, is done by right click the APC620 System PCI and select *Open (x) Ethernet Configuration (ethPort)*. The *ethPort* is determinate by the connection port of PLC and PC.

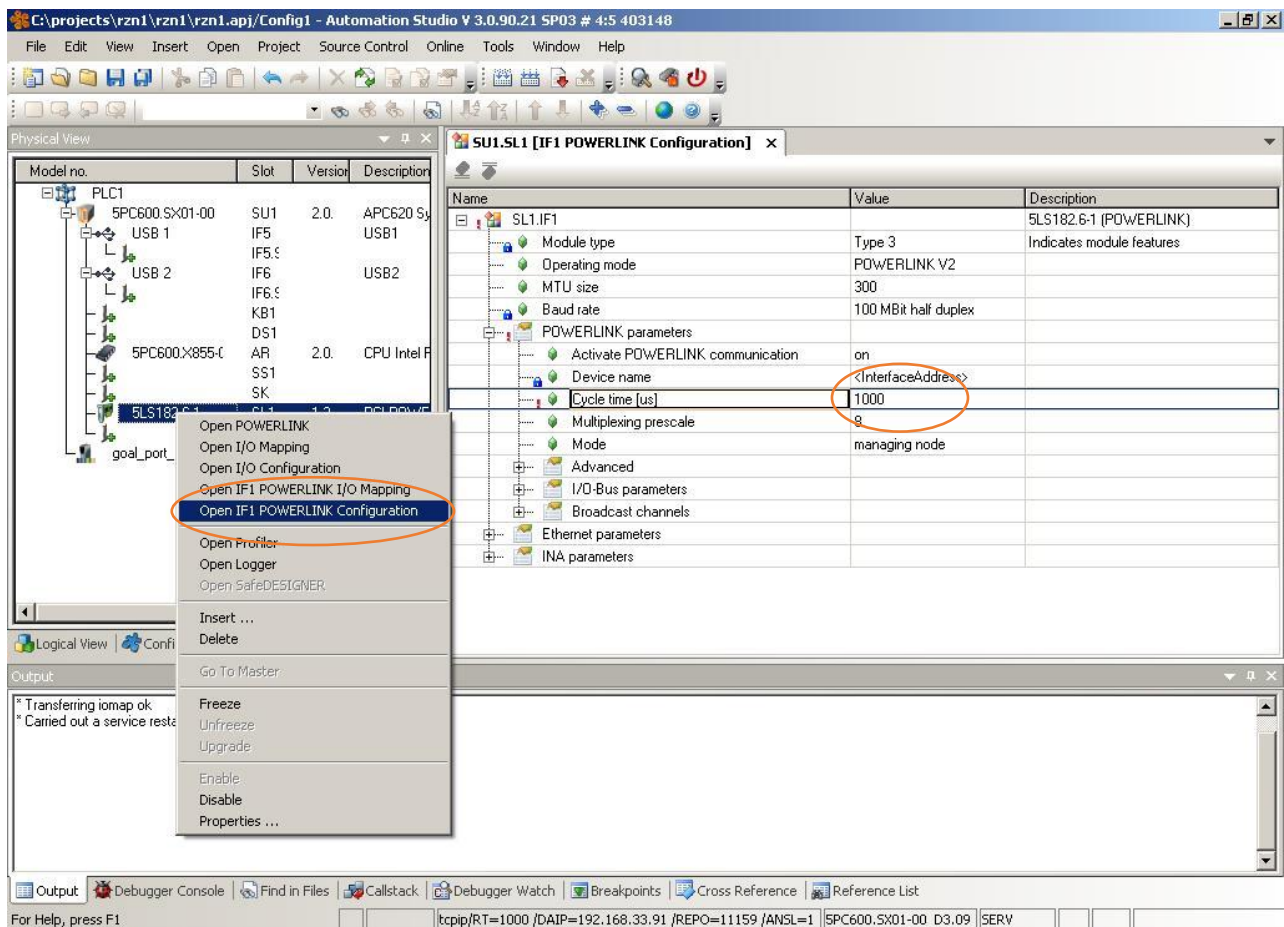


Figure 4-3: Configuration of the cycle time

The displaying and editing of the POWERLINK configuration, e.g. cycle time, is done by right click the *PCI POWERLINK V1,V2 Hub* and select *Open IF1 POWERLINK configuration*.

The displaying and editing of the device I/O configuration, e.g. response time, is done by right click the *goal_port_epl_cn1* and select *Open I/O Configuration*. The response time has to be at least 100µs in the current version.

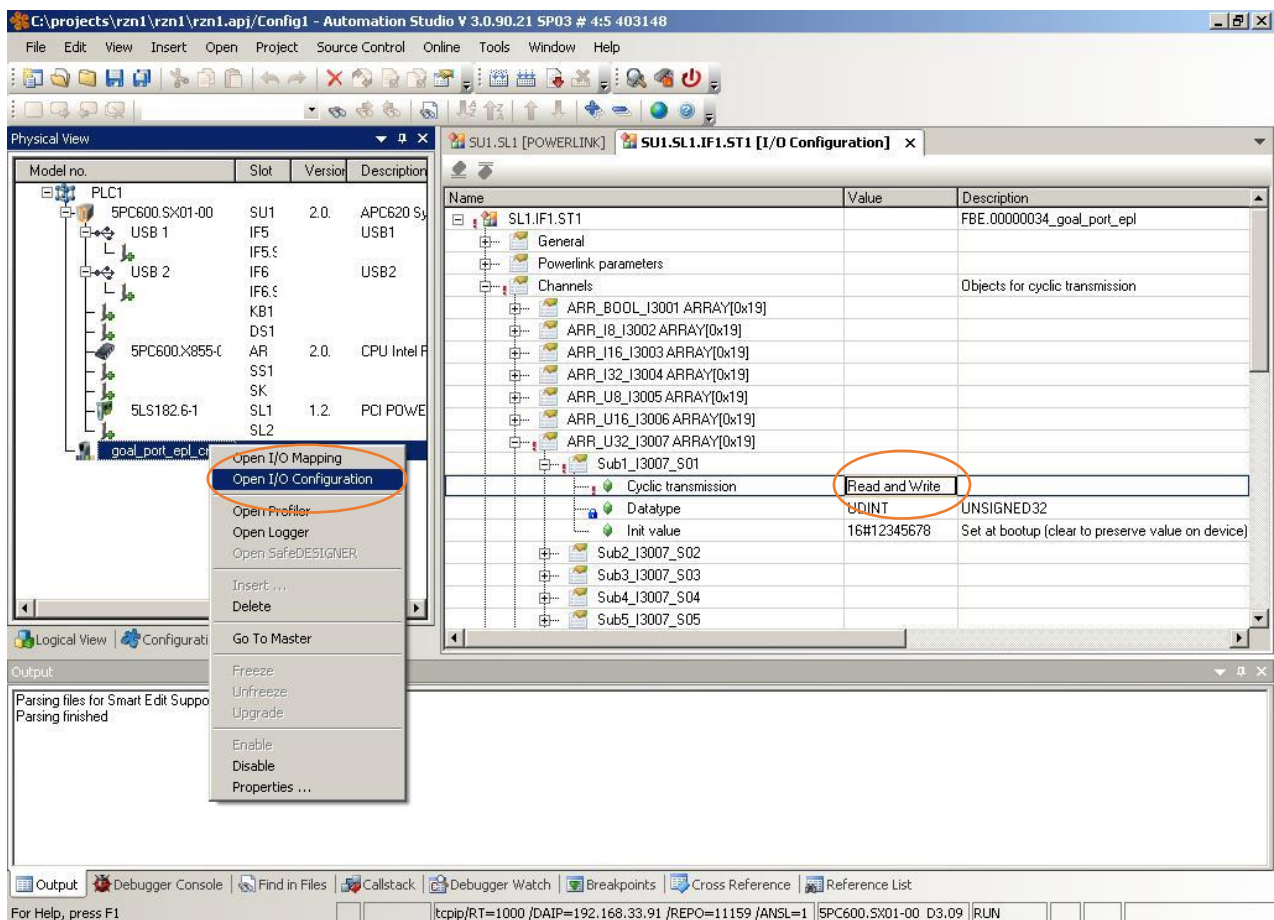


Figure 4-4: Setup cyclic data

Figure 4-4, shows the configuration of an unsigned 32-Bit value for cyclic transmission.

- 1) Open the I/O Configuration tab by right click *goal_port_epl_cn1* and selecting the corresponding menu entry.
- 2) Select a type channel and its sub index.
- 3) Change its cyclic transmission value to Read and Write

The project is built by selecting
Project → Rebuild Configuration

If there are errors about an invalid parameter value, select
Project → Build

Afterwards, the Automation Studio asks about to transfer the project to the PLC. Answer with *Transfer* and confirm the next window with *Okay*. Wait until Automation Studio confirms the download.

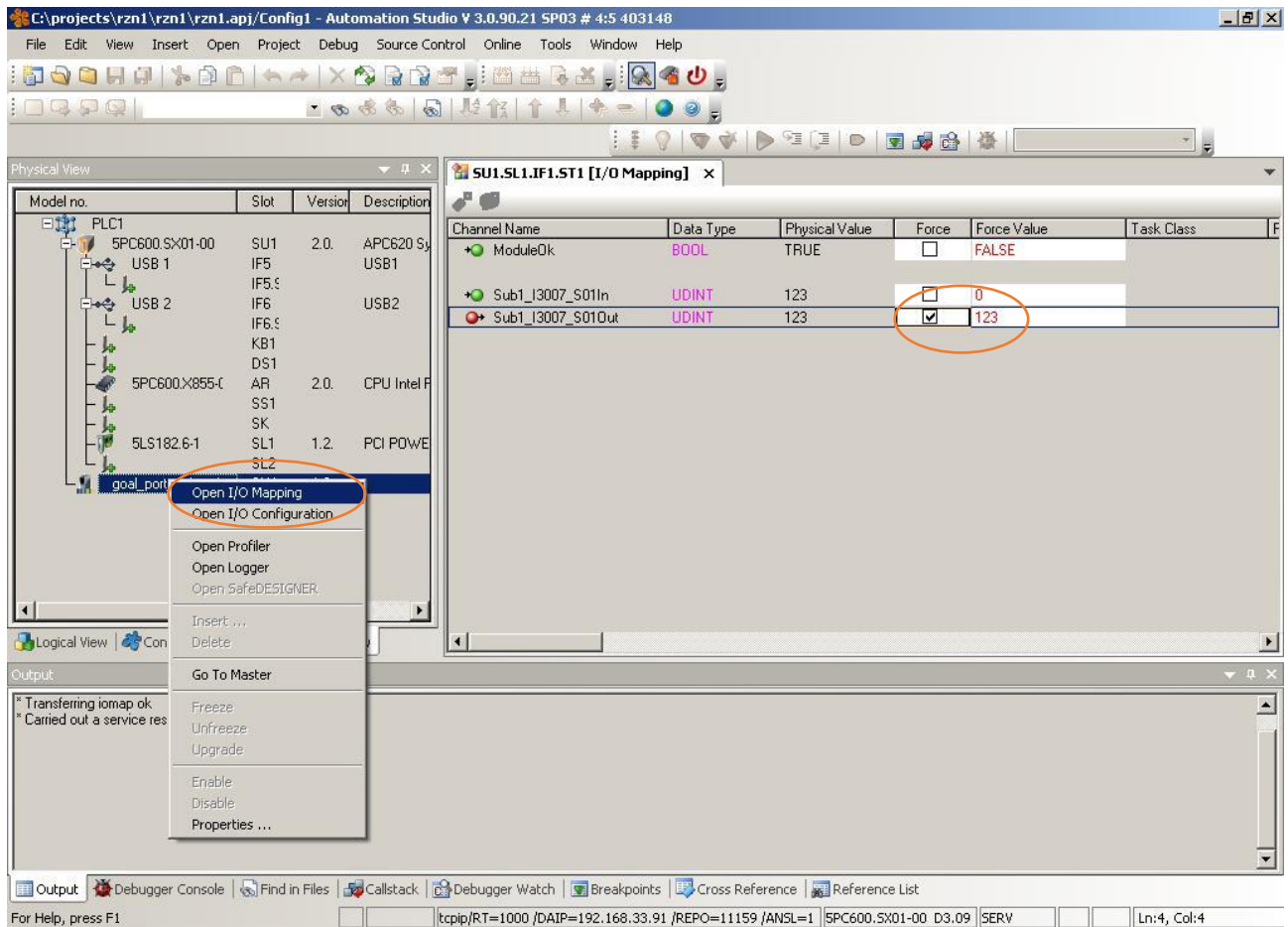


Figure 4-5: Show cyclic data

To show and force the cyclic data in online mode, select the *I/O Mapping* entry on the *goal_port_epl_cn1* right-click menu.

Open the *I/O Mapping* by monitor tab by

View → Monitor

and choose a Force Value. Enable the Value by putting the tick on Force.

Revision History

Version	Process		Check		Release	
	Date	Name	Date	Name	Date	Name
1.0	2017-07-31	Marcus Züche				
5.	Initial document					
1.1	2017-08-07	Marcus Züche				
	Review by Renesas					
1.2	2017-12-15	Marcus Züche				
	Add description for autostart the CA7 application Minor updates					
1.3	2018-05-28	Martin Herberg				
	Add description for standalone project variants and all RZ/N1 derivatives. Minor Updates					
1.4	2018-07-04	Martin Ehlert				
	Added interface usb0 as parameter to start command in chapter 3.5.4.1					
1.5	2018-09-24	Marcus Züche				
	Added RZ/N1S CTC variant. Added RZ/N1L CTC variant. Summary hardware initialization. Minor text updates/ formation.					
1.6	2019-01-07	Marcus Züche				
	Expand description of RZ/N1L SPI configuration. Expand description of RZ/N1S-EB configuration. Add GCC version. Add board versions. Update boot commands.					
1.7	2019-01-23	Martin Ehlert				
	Updated description for setting user MAC address Add advices for Core-to-core boot order					
1.4.3 (1.8)	2019-07-11	Martin Ehlert				
	Updated IAR reference version for release 1.4.3					



Renesas Electronics Corporation

www.renesas.com

Sales Offices

Refer to "http://www.renesas.com" for the latest and detailed information.

Renesas Electronics America Inc.

2880 Scott Boulevard Santa Clara, CA 95050-2554, U.S.A.
Tel: +1-408-588-6000, Fax: +1-408-588-6130

Renesas Electronics Canada Limited

1101 Nicholson Road, Newmarket, Ontario L3Y 9C3, Canada
Tel: +1-905-898-5441, Fax: +1-905-898-3220

Renesas Electronics Europe Limited

Dukes Meadow, Millboard Road, Bourne End, Buckinghamshire, SL8 5FH, U.K
Tel: +44-1628-585-100, Fax: +44-1628-585-900

Renesas Electronics Europe GmbH

Arcadiastrasse 10, 40472 Düsseldorf, Germany
Tel: +49-211-6503-0, Fax: +49-211-6503-1327

Renesas Electronics (China) Co., Ltd.

7th Floor, Quantum Plaza, No.27 ZhiChunLu Haidian District, Beijing 100083, P.R.China
Tel: +86-10-8235-1155, Fax: +86-10-8235-7679

Renesas Electronics (Shanghai) Co., Ltd.

Unit 204, 205, AZIA Center, No.1233 Lujiazui Ring Rd., Pudong District, Shanghai 200120, China
Tel: +86-21-5877-1818, Fax: +86-21-6887-7858 / -7898

Renesas Electronics Hong Kong Limited

Unit 1601-1613, 16/F., Tower 2, Grand Century Place, 193 Prince Edward Road West, Mongkok, Kowloon, Hong Kong
Tel: +852-2886-9318, Fax: +852 2886-9022/9044

Renesas Electronics Taiwan Co., Ltd.

7F, No. 363 Fu Shing North Road Taipei, Taiwan, R.O.C.
Tel: +886-2-8175-9600, Fax: +886 2-8175-9670

Renesas Electronics Singapore Pte. Ltd.

1 harbourFront Avenue, #06-10, Keppel Bay Tower, Singapore 098632
Tel: +65-6213-0200, Fax: +65-6278-8001

Renesas Electronics Malaysia Sdn.Bhd.

Unit 906, Block B, Menara Amcorp, Amcorp Trade Centre, No. 18, Jin Persiaran Barat, 46050 Petaling Jaya, Selangor Darul Ehsan, Malaysia
Tel: +60-3-7955-9390, Fax: +60-3-7955-9510

Renesas Electronics Korea Co., Ltd.

11F., Samik Laviel' or Bldg., 720-2 Yeoksam-Dong, Kangnam-Ku, Seoul 135-080, Korea
Tel: +82-2-558-3737, Fax: +82-2-558-5141

RZ/N1 Group

