



mistywest

RZ Ecosystem Partner Solution

MistyWest Low Power SOM



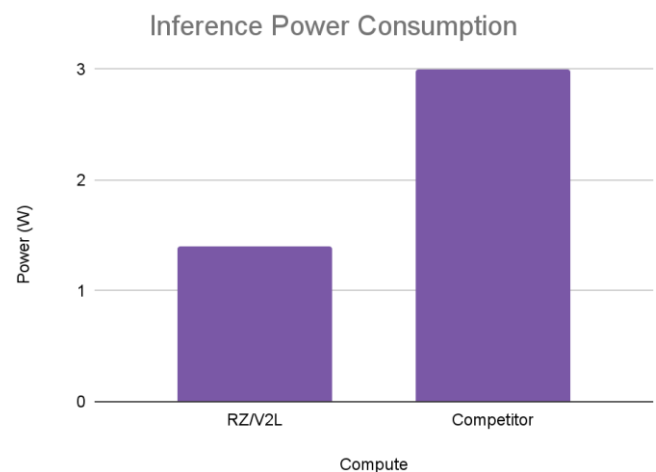
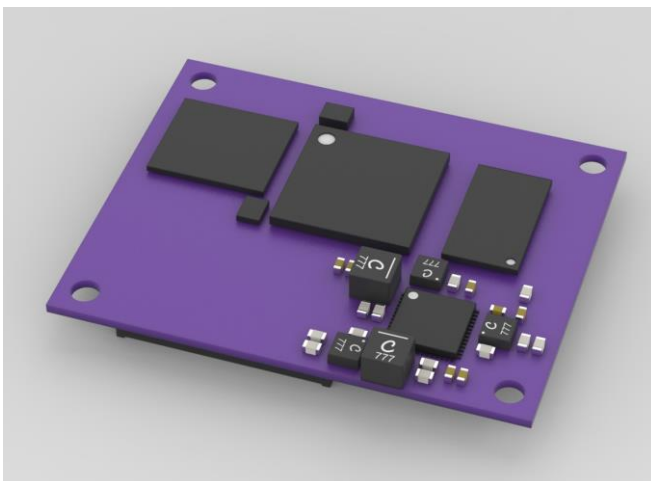
Solution Summary

The MistyWest low power RZ/V2L SOM enables battery-powered computer vision applications. Embedded with a [RZ/V2L microprocessor](#) which delivers high-speed AI inference at low power consumption, this SOM is able to perform AI computer vision tasks at 50% lesser power than the other processors in the market.

Features/Benefits

- MistySOM
 - Low power RZ/V2L SOM
 - 40mm x 50mm form factor
 - -40 to +85 C temperature rating
- Demo
 - Tiny yolo v2 running at 10 fps on an RZ/V2L and a competitor
 - Real-time inference, video display and power comparison

Diagrams/Graphics



Target Markets and Applications

- Retail
- Industrial Automation
- Building Management
- Transportation

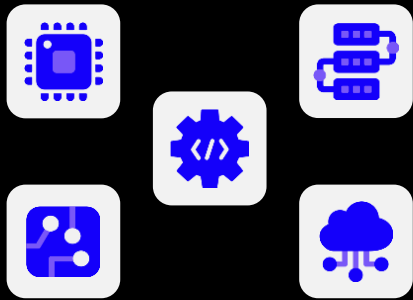
<https://www.mistywest.com/>

2022.04



We Are MistyWest.

An engineering design consultancy that exists to create an inclusive and prosperous global community enabled by technology, with a focus primarily on developing intelligent connected devices that advance the *UN Sustainable Development Goals*.



Our core areas of technology expertise include **Optics**, **Embedded Vision**, **AWS/Azure IoT**, **Low Power Electronics**, and **Wireless Connectivity** (*Bluetooth, WiFi, Cellular and Satellite*).

By empowering our world-class research and engineering team, we create technically complex intelligent connected devices that accelerate the world's transition to a sustainable future.

We combine our deep knowledge of physics, engineering and manufacturing to overcome technical barriers and turn concepts into products, providing full-stack hardware solutions for our clients.



mistywest.com