

FEATURES:

- Low ON resistance: $r_{DS(on)} = 5\Omega$
- Fast transition time: $t_{TRAN} = 6ns$
- Wide bandwidth: 830MHz (-3dB point)
- Crosstalk: -115dB at 50KHz, -100dB at 5MHz, -66dB at 30MHz
- Off-isolation: -90dB at 50KHz, -60dB at 5MHz, -50dB at 30MHz
- Single 5V supply
- Can be used as multiplexer or demultiplexer
- TTL-compatible control inputs
- Ultra-low quiescent current: $3\mu A$
- Available in QSOP package

APPLICATIONS:

- High-speed video signal switching/routing
- HDTV-quality video signal routing
- Audio signal switching/routing
- Data acquisition
- ATE systems
- Telecomm routing
- Switch between multiple video sources
- Token Ring transceivers
- High-speed networking

DESCRIPTION:

The QS4A205 is a high-performance CMOS analog Four-Channel SPDT multiplexer/demultiplexer with individual enables. The low On-resistance of the QS4A205 allows inputs to be connected to outputs with low insertion loss and high bandwidth. TTL-compatible control circuitry with "Break-Before-Make" feature prevents contention.

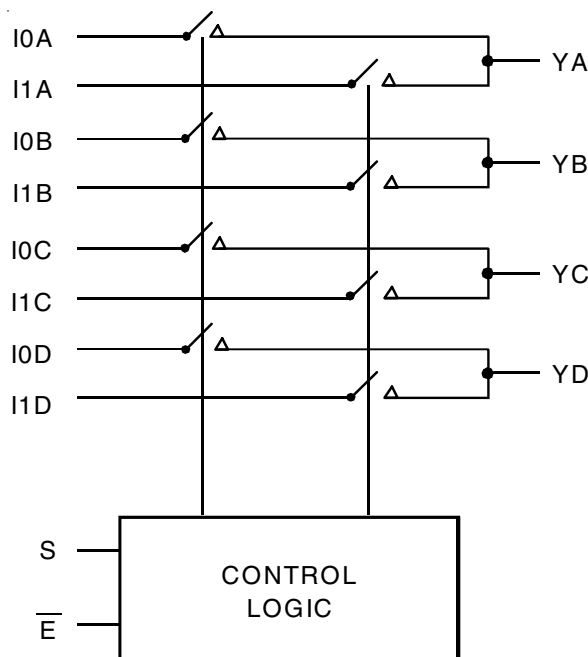
The QS4A205 with 830MHz bandwidth makes it ideal for high-performance video signal switching, audio signal switching, and telecomm routing applications. High performance and low power dissipation makes this device ideal for battery operated and remote instrumentation applications.

The QS4A205 is offered in the QSOP package and has several advantages over conventional packages such as PDIP and SOIC including:

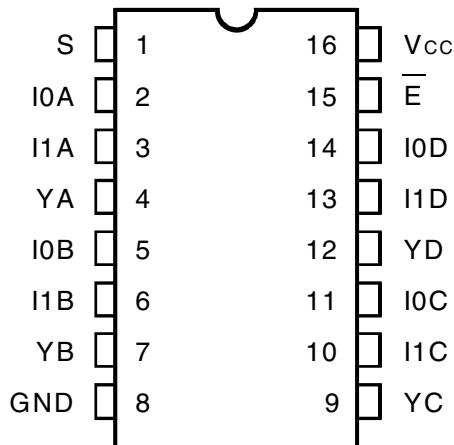
- Reduced signal delays due to denser component packaging on circuit boards
- Reduced system noise due to less pin inductance resulting in lower ground bounce

The QS4A205 is characterized for operation at $-40^{\circ}C$ to $+85^{\circ}C$.

FUNCTIONAL BLOCK DIAGRAM



PIN CONFIGURATION



QSOP
TOP VIEW

ABSOLUTE MAXIMUM RATINGS⁽¹⁾

| Symbol | Description | Max | Unit |
|----------------------|--------------------------------------|-------------|------|
| VTERM ⁽²⁾ | Supply Voltage to Ground | -0.5 to +7 | V |
| VTERM ⁽³⁾ | DC Switch Voltage Vs | -0.5 to +7 | V |
| — | Analog Input Voltage | -0.5 to +7 | V |
| VTERM ⁽³⁾ | DC Input Voltage VIN | -0.5 to +7 | V |
| VAC | AC Input Voltage (pulse width ≤20ns) | -3 | V |
| IOUT | DC Output Current | 120 | mA |
| PMAX | Maximum Power Dissipation | 0.7 | W |
| TSTG | Storage Temperature | -65 to +150 | °C |

NOTES:

- Stresses greater than those listed under ABSOLUTE MAXIMUM RATINGS may cause permanent damage to the device. This is a stress rating only and functional operation of the device at these or any other conditions above those indicated in the operational sections of this specification is not implied. Exposure to absolute maximum rating conditions for extended periods may affect reliability.
- VCC terminals.
- All terminals except VCC.

CAPACITANCE (TA = +25°C, f = 1MHz, VIN = 0V, VOUT = 0V)

| Symbol | Parameter ⁽¹⁾ | Conditions | Typ. | Max. | Unit |
|-------------|--------------------------|---|------|------|------|
| CMUX(OFF) | MUX Off Capacitance | $\bar{E} = V_{CC}, V_{IN} = V_{OUT} = 0V$ | 5.6 | — | pF |
| CDEMUX(OFF) | DEMUX Off Capacitance | $\bar{E} = V_{CC}, V_{IN} = V_{OUT} = 0V$ | 7.4 | — | pF |
| CMUX(ON) | MUX On Capacitance | $\bar{E} = 0V, V_{IN} = V_{OUT} = 0V$ | 12 | — | pF |
| CDEMUX(ON) | DEMUX On Capacitance | $\bar{E} = 0V, V_{IN} = V_{OUT} = 0V$ | 15 | — | pF |

NOTE:

- As applicable to the device type.

PIN DESCRIPTION

| Pin Names | I/O | Description |
|-----------|-----|--------------|
| IxA | I/O | Demux Port A |
| IxB | I/O | Demux Port B |
| IxC | I/O | Demux Port C |
| IXD | I/O | Demux Port D |
| \bar{E} | I | Enable Input |
| S | I | Select Input |
| YA-YD | I/O | Mux Port A-D |

FUNCTION TABLE⁽¹⁾

| Enable | Select | MUX/DEMUX Ports | | | | Function |
|-----------|--------|-----------------|-----|-----|-----|----------|
| \bar{E} | S | YA | YB | YC | YD | |
| H | X | Z | Z | Z | Z | Disable |
| L | L | I0A | I0B | I0C | I0D | Select 0 |
| L | H | I1A | I1B | I1C | I1D | Select 1 |

NOTE:

- H = HIGH Voltage Level
L = LOW Voltage Level
X = Don't Care
Z = High-Impedance

DC ELECTRICAL CHARACTERISTICS OVER OPERATING RANGE

Following Conditions Apply Unless Otherwise Specified:

Industrial: $T_A = -40^{\circ}\text{C}$ to $+85^{\circ}\text{C}$, $V_{CC} = 5\text{V} \pm 5\%$

| Symbol | Parameter | Test Conditions | Min. | Typ. ⁽¹⁾ | Max. | Unit |
|--------------------------------|---|--|------|---------------------|--------------|----------|
| Analog Switch | | | | | | |
| V_{IN} | Analog Signal Range ⁽²⁾ | | -0.5 | 1 | $V_{CC} - 1$ | V |
| $r_{DS(ON)}$ | Drain-source ON resistance ^(2,3) | $V_{CC} = \text{Min.}, V_{IN} = 0\text{V}, I_{ON} = 30\text{mA}$ | — | 5 | 7 | Ω |
| | | $V_{CC} = \text{Min.}, V_{IN} = 2.4\text{V}, I_{ON} = 15\text{mA}$ | — | 13 | 17 | |
| $I_{C(OFF)}$ | Channel Off Leakage Current | $I_N = V_{CC}$ or 0V ; $Y_N = 0\text{V}$ or V_{CC} ; $\bar{E} = V_{CC}$ | — | 2 | — | nA |
| $I_{C(ON)}$ | Channel On Leakage Current | $I_N = Y_N = 0\text{V}$ (each channel is turned on sequentially) | — | 2 | — | nA |
| Digital Control | | | | | | |
| V_{IH} | Input HIGH Voltage | Guaranteed Logic HIGH for Control Pins | 2 | — | — | V |
| V_{IL} | Input LOW Voltage | Guaranteed Logic LOW for Control Pins | — | — | 0.8 | V |
| Dynamic Characteristics | | | | | | |
| t_{TRANS} | Switching Time of MUX S to Y | $R_L = 1\text{K}\Omega, C_L = 100\text{pF}$ | 0.5 | — | 6.6 | ns |
| $t_{ON(EN)}$ | Enable Turn-On Time, \bar{E} to Y | $R_L = 1\text{K}\Omega, C_L = 100\text{pF}$ | 0.5 | — | 6 | ns |
| $t_{OFF(EN)}$ | Enable Turn-Off Time, \bar{E} to Y | $R_L = 1\text{K}\Omega, C_L = 100\text{pF}$ | 0.5 | — | 6 | ns |
| t_{PD} | Group Delay ^(2,4) | $R_L = 1\text{K}\Omega, C_L = 100\text{pF}$ | — | — | 250 | ps |
| f_{dB} | -3dB Bandwidth | $V_{IN} = 1\text{Vp-p}, R_L = 75\Omega$ | — | 830 | — | MHz |
| | Off-isolation | $V_{IN} = 1\text{Vp-p}, R_L = 75\Omega, f = 5\text{MHz}$ | — | -60 | — | dB |
| X TALK | Crosstalk | $V_{IN} = 1\text{Vp-p}, R_L = 75\Omega, f = 5\text{MHz}$ | — | -100 | — | dB |
| QCI | Charge Injection | | — | 1.5 | — | pC |

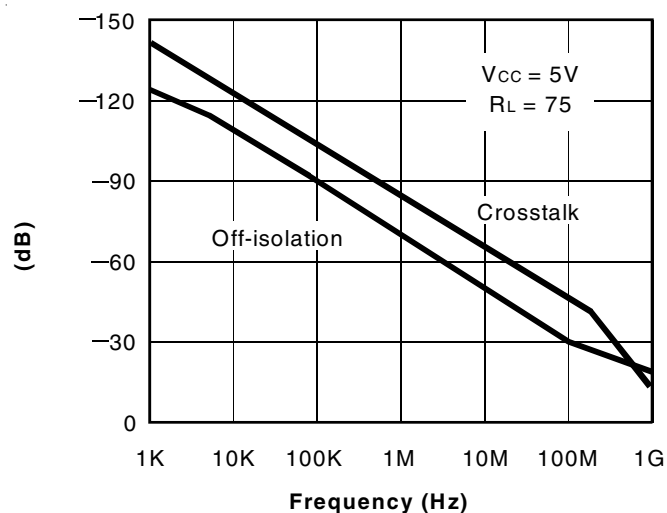
NOTES:

- Typical values are at $V_{CC} = 5.0\text{V}$, $T_A = 25^{\circ}\text{C}$.
- Max value is guaranteed but not production tested.
- Measured by voltage drop between A and C pins or B and D pins at indicated current through the switch. ON resistance is determined by the lower of the voltages on the two (A, C, or B, D) pins.
- The bus switch contributes no group delay other than the RC delay of the ON resistance of the switch and load capacitance. Group delay of the bus switch, when used in a system, is determined by the driving circuit on the driving side of the switch and its interaction with the load on the driven side.

POWER SUPPLY CHARACTERISTICS

| Symbol | Parameter | Test Conditions | Max. | Unit |
|-----------|-----------------|--|------|---------------|
| I_{CCQ} | Quiescent Power | $V_{CC} = \text{Max.}, V_{IN} = \text{GND}$ or $V_{CC}, f = 0$ | 3 | μA |

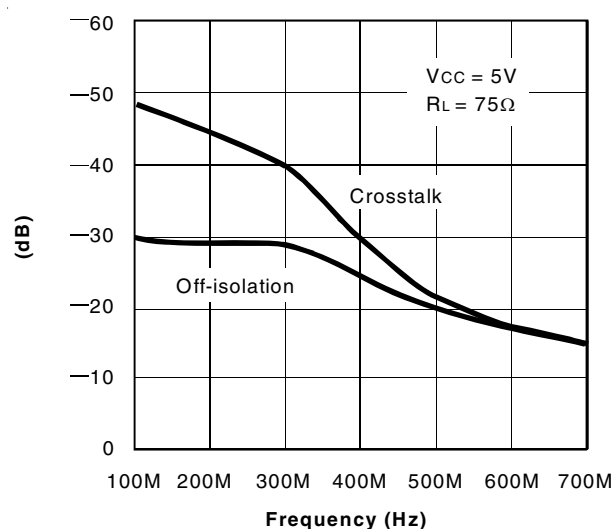
TYPICAL CHARACTERISTICS



Off-isolation and Crosstalk vs. Frequency

NOTES:

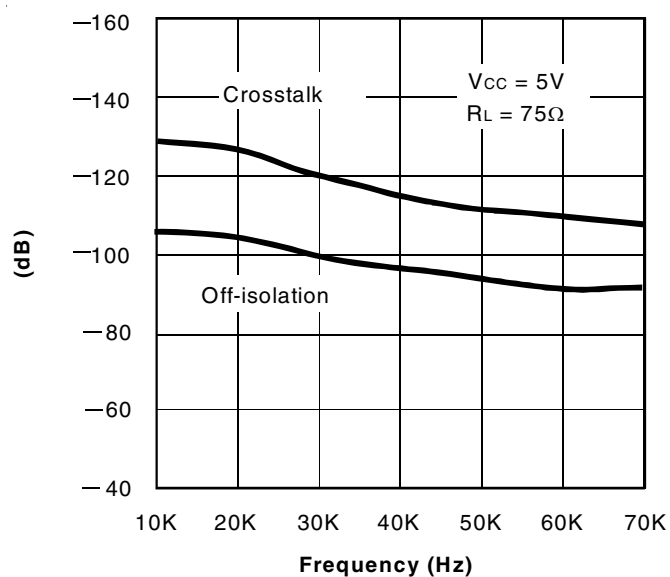
1. Crosstalk = $20 \log |V_o/V_s|$
2. Off-isolation = $20 \log |V_o/V_s|$



Off-isolation and Crosstalk vs. Frequency

NOTES:

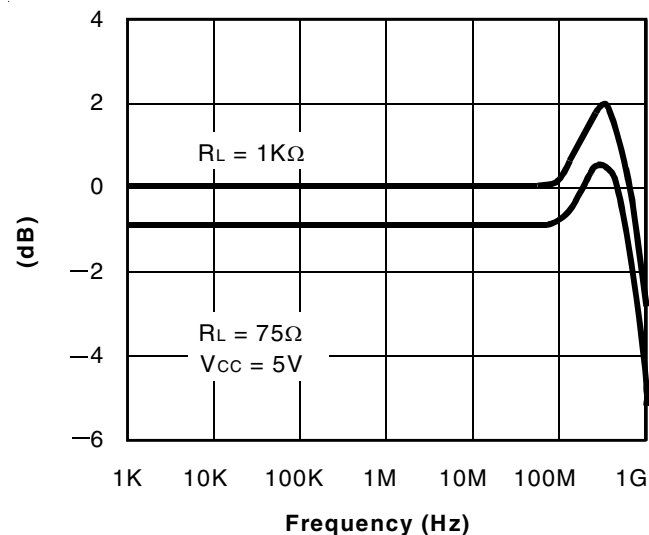
1. Crosstalk = $20 \log |V_o/V_s|$
2. Off-isolation = $20 \log |V_o/V_s|$



Off-isolation and Crosstalk vs. Frequency

NOTES:

1. Crosstalk = $20 \log |V_o/V_s|$
2. Off-isolation = $20 \log |V_o/V_s|$

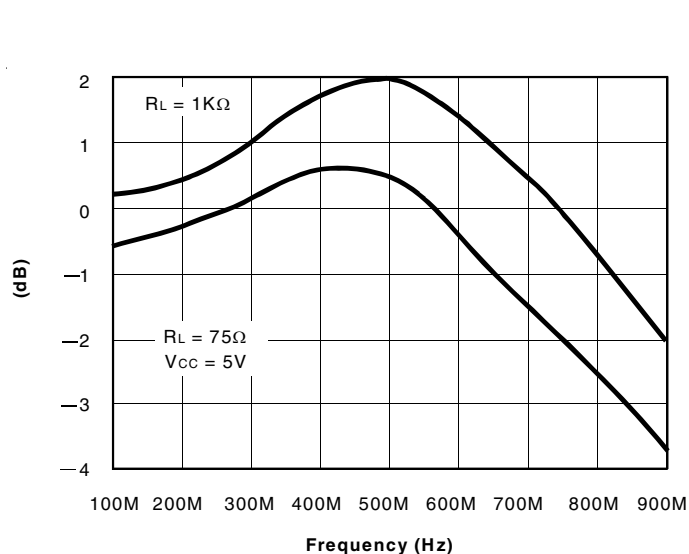


Insertion Loss vs. Frequency

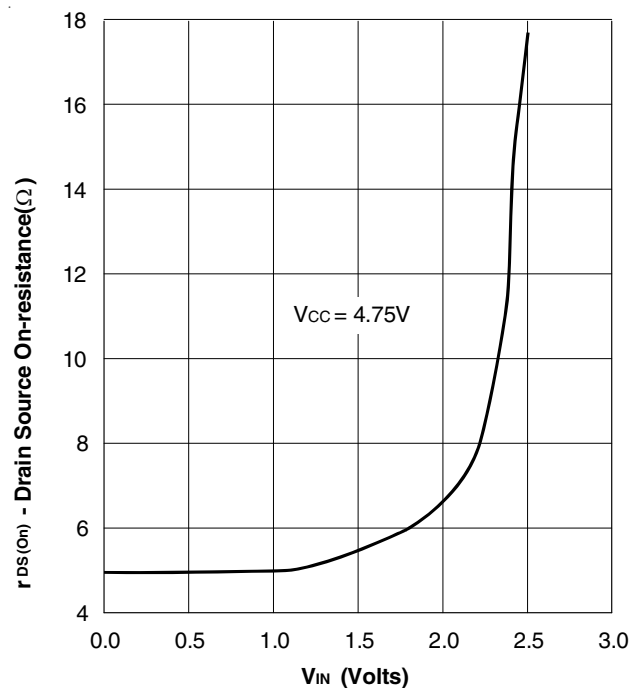
NOTE:

1. Insertion Loss = $20 \log |V_o/V_s|$

TYPICAL CHARACTERISTICS (CONTINUED)



Insertion Loss vs. Frequency

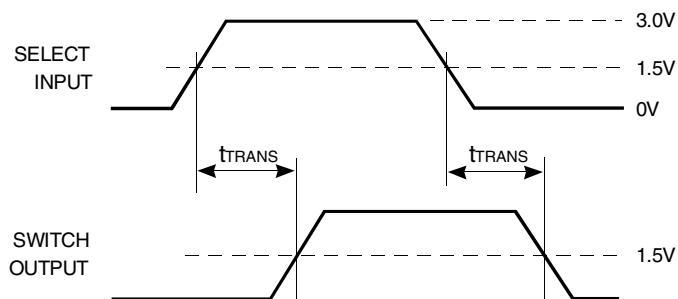
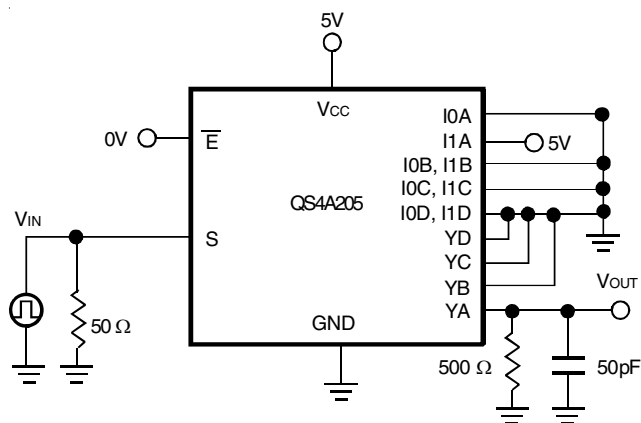


RON LINK

On-Resistance vs. VIN

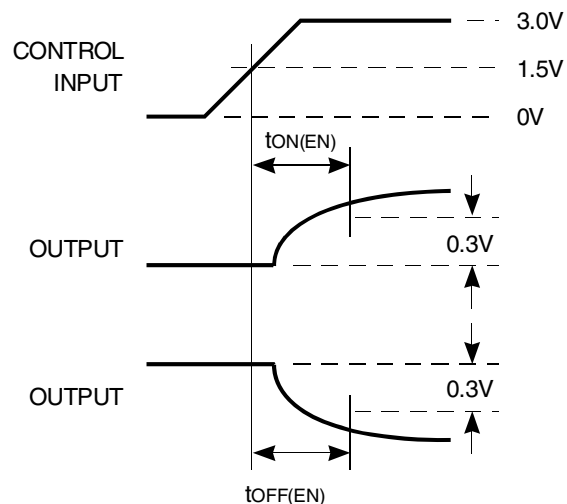
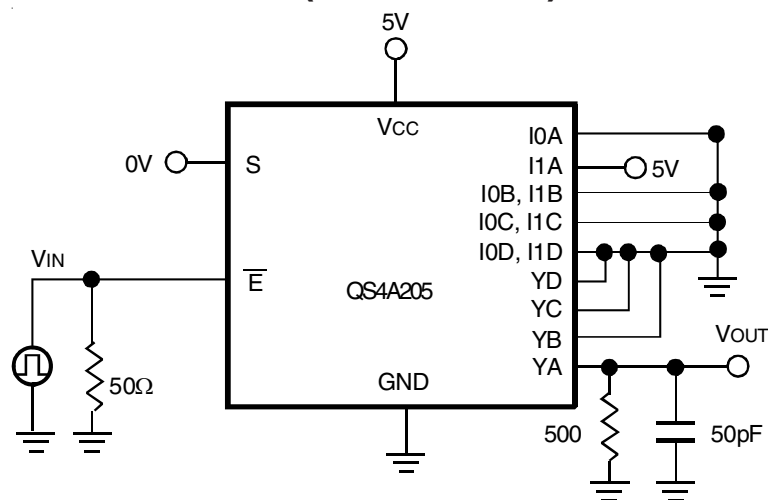
NOTE:
1. Insertion Loss = $20 \log |V_o/V_s|$

TEST CIRCUITS

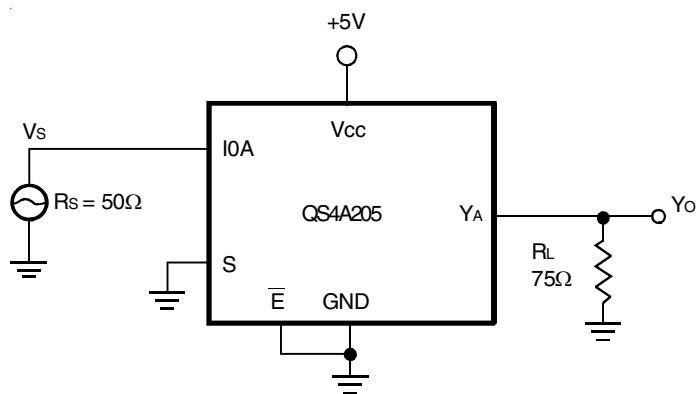


Transition Time

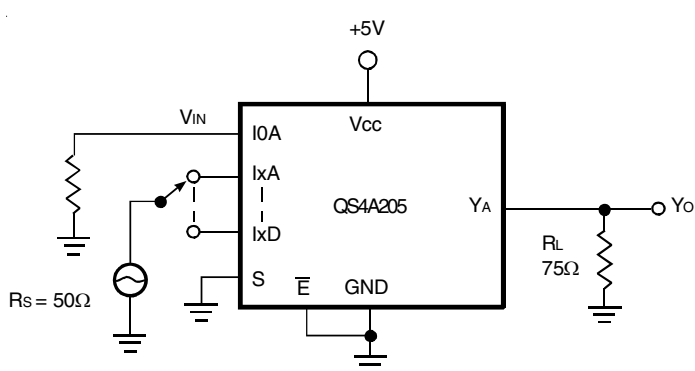
TEST CIRCUITS (CONTINUED)



Enable Switching Time



Insertion Loss



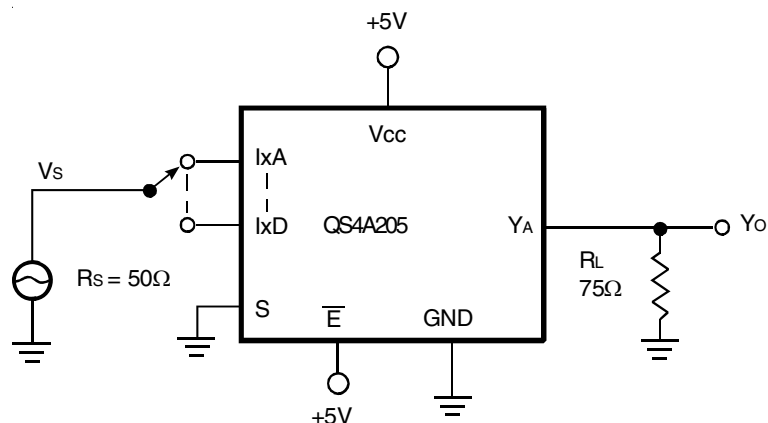
Crosstalk

NOTE:

1. Insertion Loss = $20 \log |V_o/V_s|$

NOTE:

1. Crosstalk = $20 \log |V_o/V_s|$

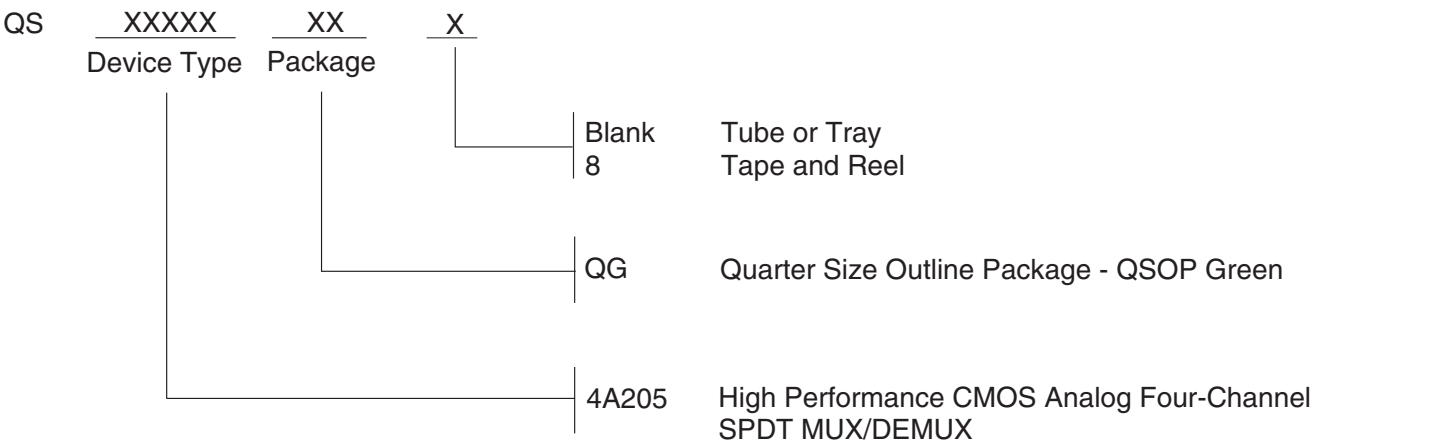


Off-Isolation

NOTE:

1. Off-isolation = $20 \log |V_o/V_s|$

ORDERING INFORMATION



IMPORTANT NOTICE AND DISCLAIMER

RENESAS ELECTRONICS CORPORATION AND ITS SUBSIDIARIES ("RENESAS") PROVIDES TECHNICAL SPECIFICATIONS AND RELIABILITY DATA (INCLUDING DATASHEETS), DESIGN RESOURCES (INCLUDING REFERENCE DESIGNS), APPLICATION OR OTHER DESIGN ADVICE, WEB TOOLS, SAFETY INFORMATION, AND OTHER RESOURCES "AS IS" AND WITH ALL FAULTS, AND DISCLAIMS ALL WARRANTIES, EXPRESS OR IMPLIED, INCLUDING, WITHOUT LIMITATION, ANY IMPLIED WARRANTIES OF MERCHANTABILITY, FITNESS FOR A PARTICULAR PURPOSE, OR NON-INFRINGEMENT OF THIRD-PARTY INTELLECTUAL PROPERTY RIGHTS.

These resources are intended for developers who are designing with Renesas products. You are solely responsible for (1) selecting the appropriate products for your application, (2) designing, validating, and testing your application, and (3) ensuring your application meets applicable standards, and any other safety, security, or other requirements. These resources are subject to change without notice. Renesas grants you permission to use these resources only to develop an application that uses Renesas products. Other reproduction or use of these resources is strictly prohibited. No license is granted to any other Renesas intellectual property or to any third-party intellectual property. Renesas disclaims responsibility for, and you will fully indemnify Renesas and its representatives against, any claims, damages, costs, losses, or liabilities arising from your use of these resources. Renesas' products are provided only subject to Renesas' Terms and Conditions of Sale or other applicable terms agreed to in writing. No use of any Renesas resources expands or otherwise alters any applicable warranties or warranty disclaimers for these products.

(Disclaimer Rev.1.01)

Corporate Headquarters

TOYOSU FORESIA, 3-2-24 Toyosu,
Koto-ku, Tokyo 135-0061, Japan
www.renesas.com

Contact Information

For further information on a product, technology, the most up-to-date version of a document, or your nearest sales office, please visit www.renesas.com/contact-us/.

Trademarks

Renesas and the Renesas logo are trademarks of Renesas Electronics Corporation. All trademarks and registered trademarks are the property of their respective owners.