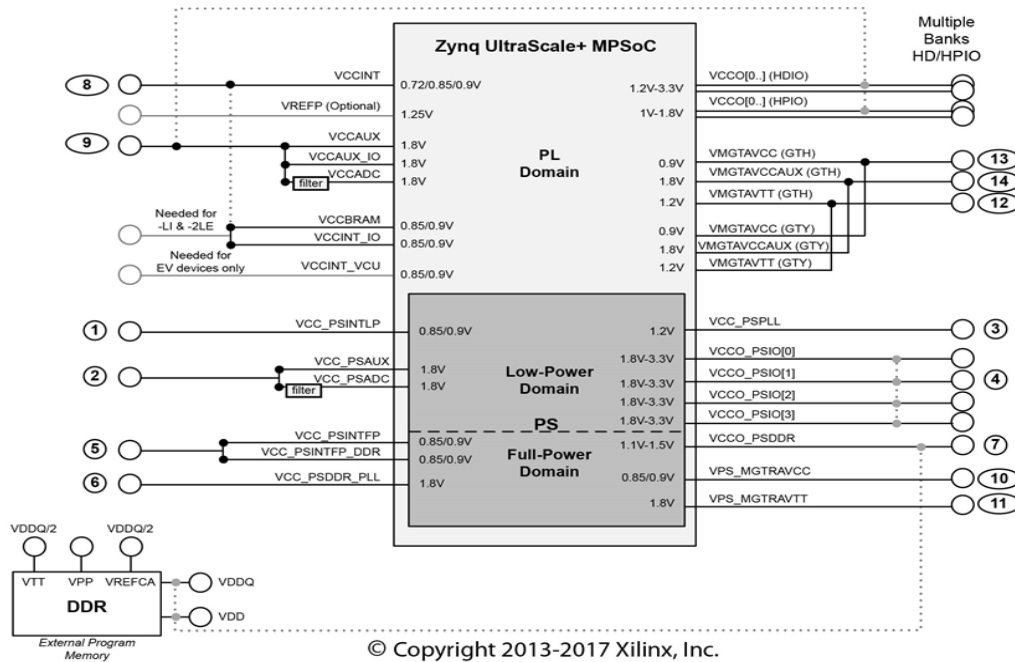
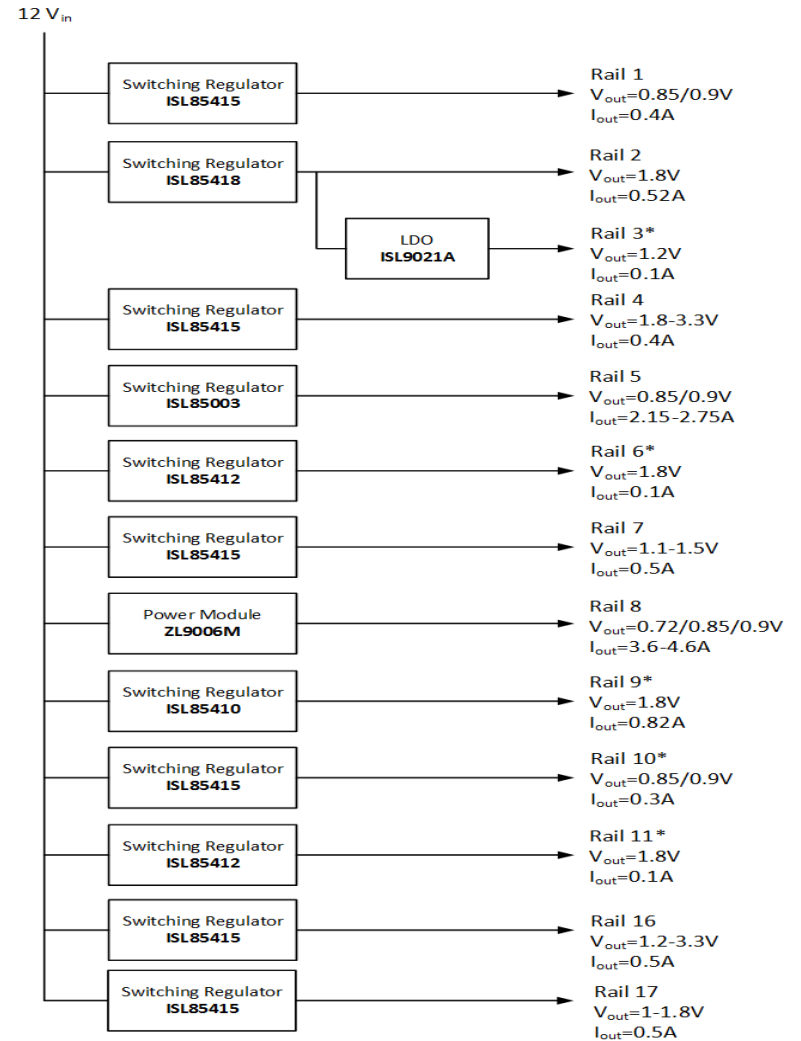


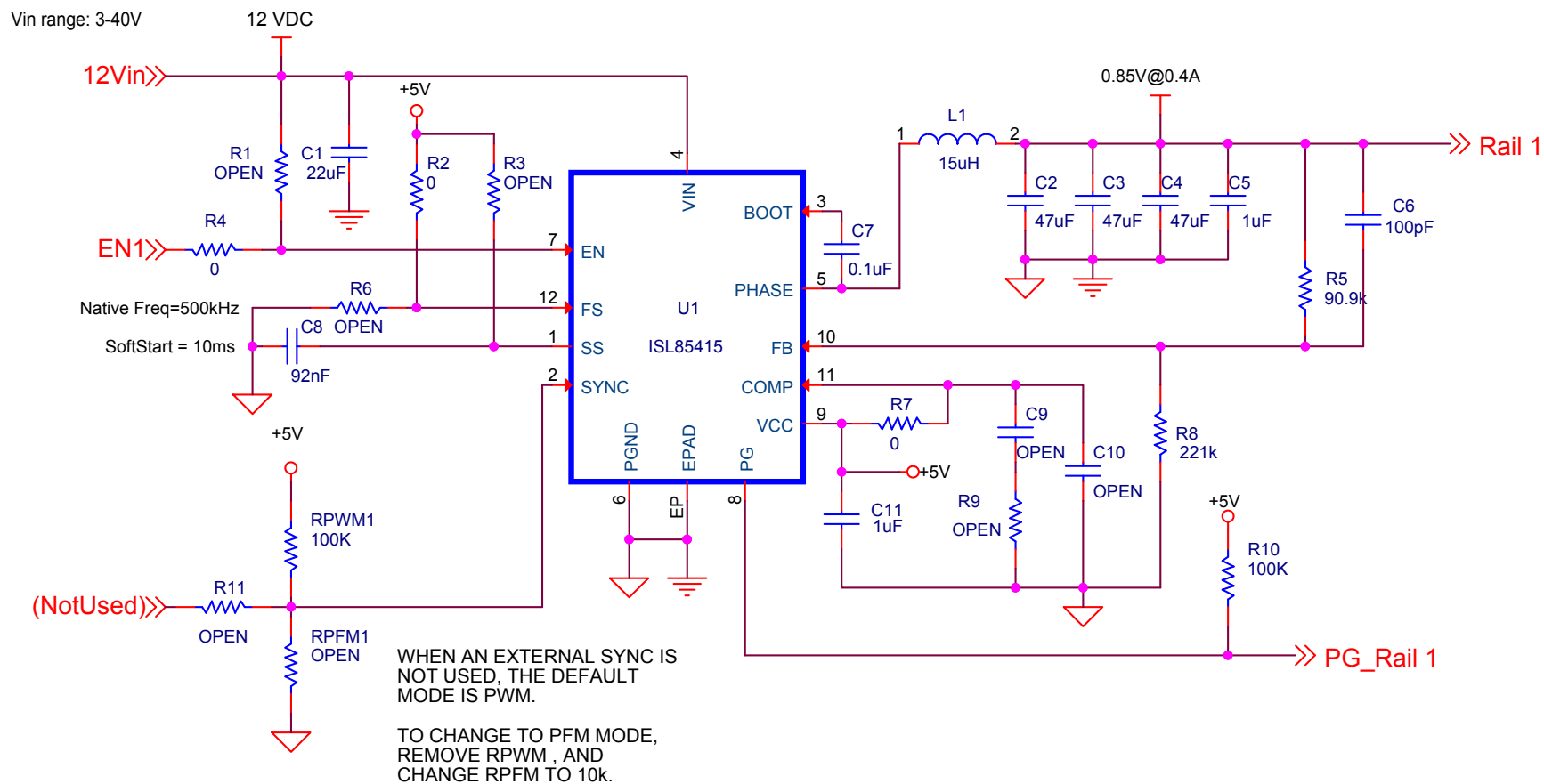
USECASE 4 #1



Rail	Voltage	Power Supply Rails
Rail 1	0.85V	VCC_PSINTLP
Rail 2	1.8V	VCC_PSAUX, VCC_PSADC
Rail 3*	1.2V*	VCC_PSPLL
Rail 4	1.8-3.3V	VCCO_PSIQ
Rail 5	0.85/0.9V	VCC_PSINTFP, VCC_PSINTFP_DDR
Rail 6*	1.8V*	VCC_PSDDR_PLL
Rail 7	1.1-1.5V	VCCO_PSDDR
Rail 8*	0.85V	VCCINT_VCU, VCCINT, VCCINT_I, VCBRAM
Rail 9*	1.8V	VCCAUX, VCCAUX_IO, VCCADC, DDR_VPP1
Rail 10*	0.85V*	VPS_MGTRAVCC
Rail 11*	1.8V*	VPS_MGTRAVTT
Rail 12*	1.2V	VMGTAVTT(GTH), VMGTAVTT(GTY)
Rail 13*	0.9V	VMGTAVCC(GTH), VMGTAVCC(GTY)
Rail 14*	1.8V	VMGTAVCCAUX(GTH), VMGTAVCCAUX(GTY)
Rail 16	1.2-3.3V	HDIO_VCCO
Rail 17	1-1.8V	HPIO_VCCO

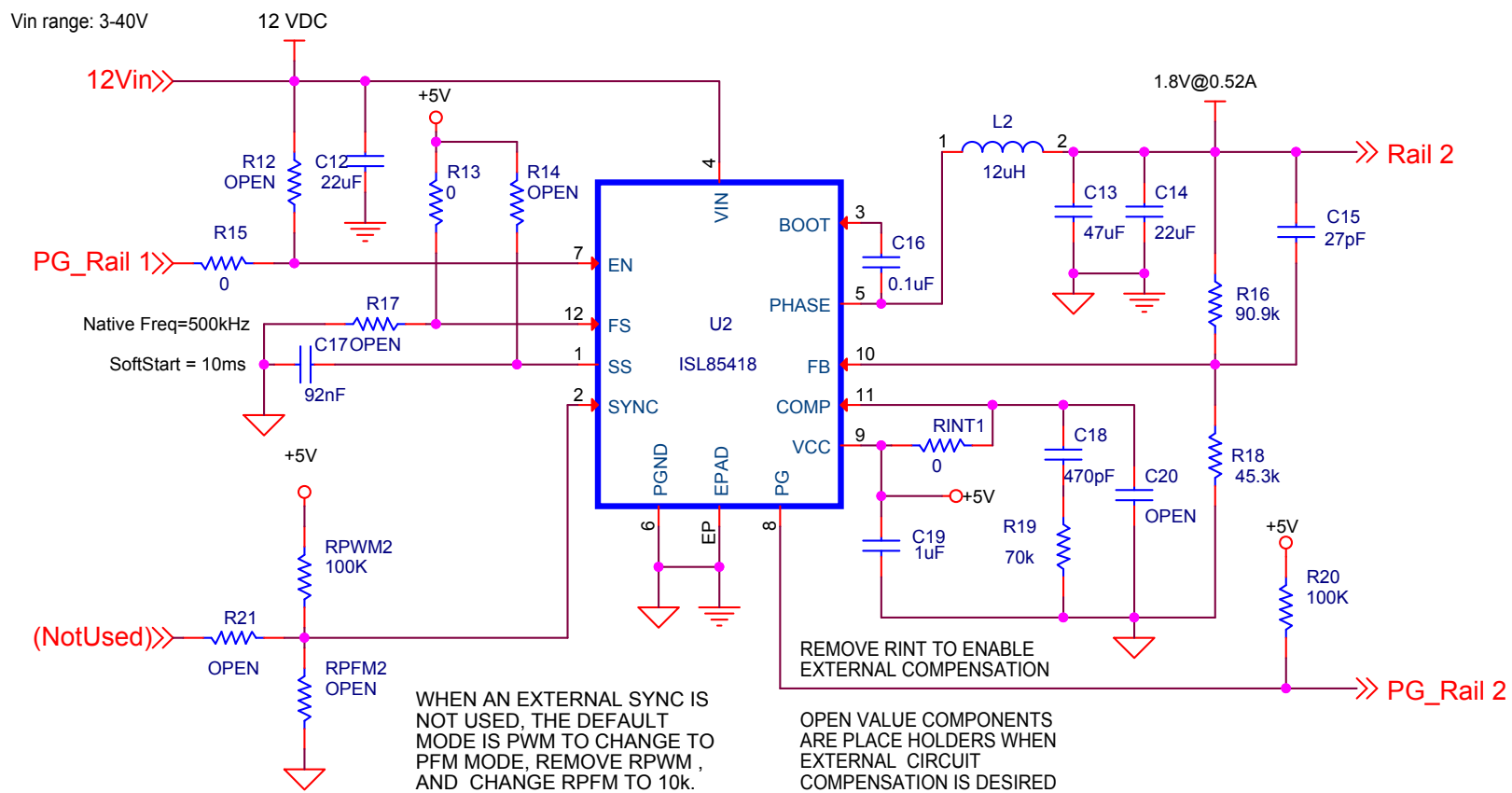


ISL85415 SINGLE OUTPUT (500mA)



Title		
ISL85415-SINGLE-1		
Size A	Document Number	Rev
Date:	Thursday, March 09, 2017	Sheet 2 of 14

ISL85418 SINGLE OUTPUT (800mA)



Title
ISL85418-SINGLE-1

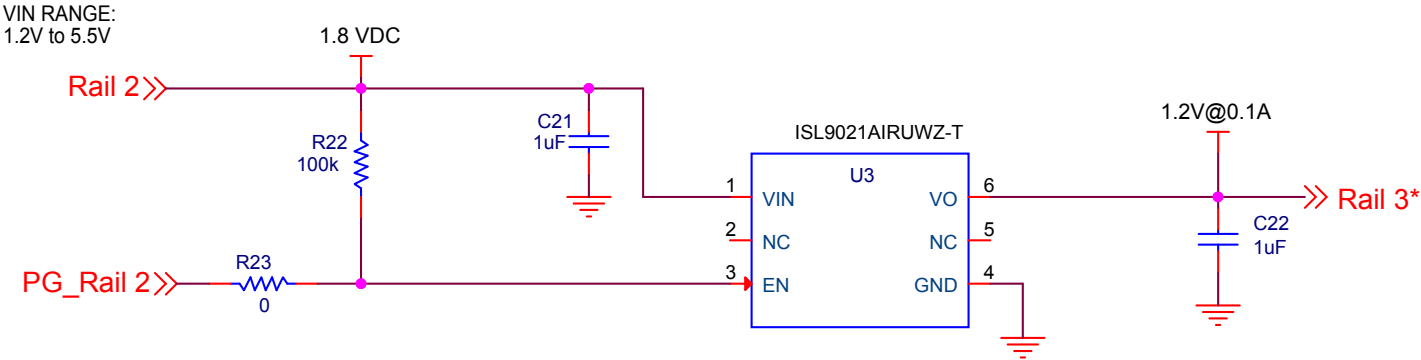
Size
A Document Number

Rev

Date: Thursday, March 09, 2017

Sheet 3 of 14

ISL9021A Single Output (250mA)



Title		
ISL9021A-SINGLE-1		
Size A	Document Number	Rev
Date:	Sheet 4	of 14

D

A

[illegible]

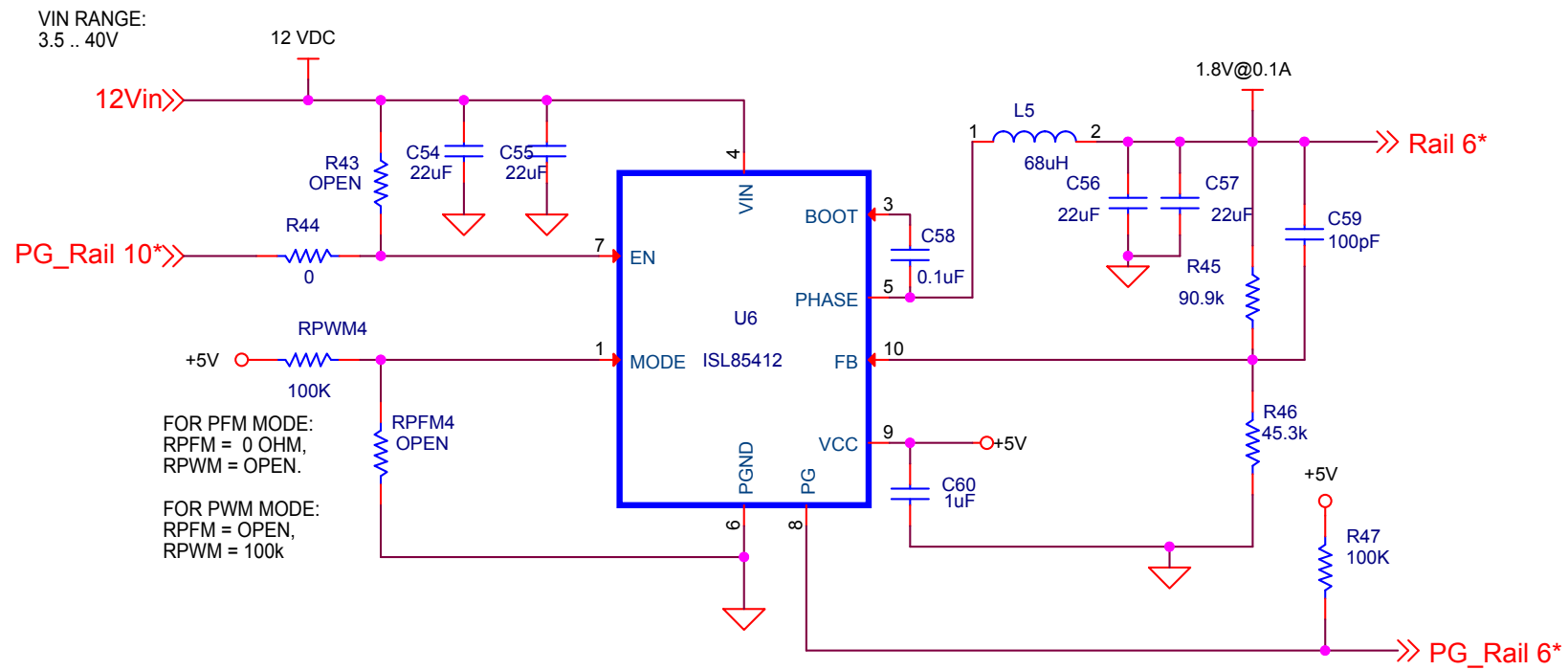
If custom compensation is desired, remove the ground connection on the COMP pin to enable external compensation.

OPEN value components on the COMP pin are place holders if external compensation is used.

Programmable Soft Start is available in the ISL85003A
(without synchronization)

Title ISL85003-SINGLE-1				
Size A	Document Number <Doc>			Rev <RevC>
Date:	Thursday, March 09, 2017	Sheet	6 of 14	

ISL85412 SINGLE OUTPUT (150mA)



Title ISL85412-SINGLE-1

Size
A

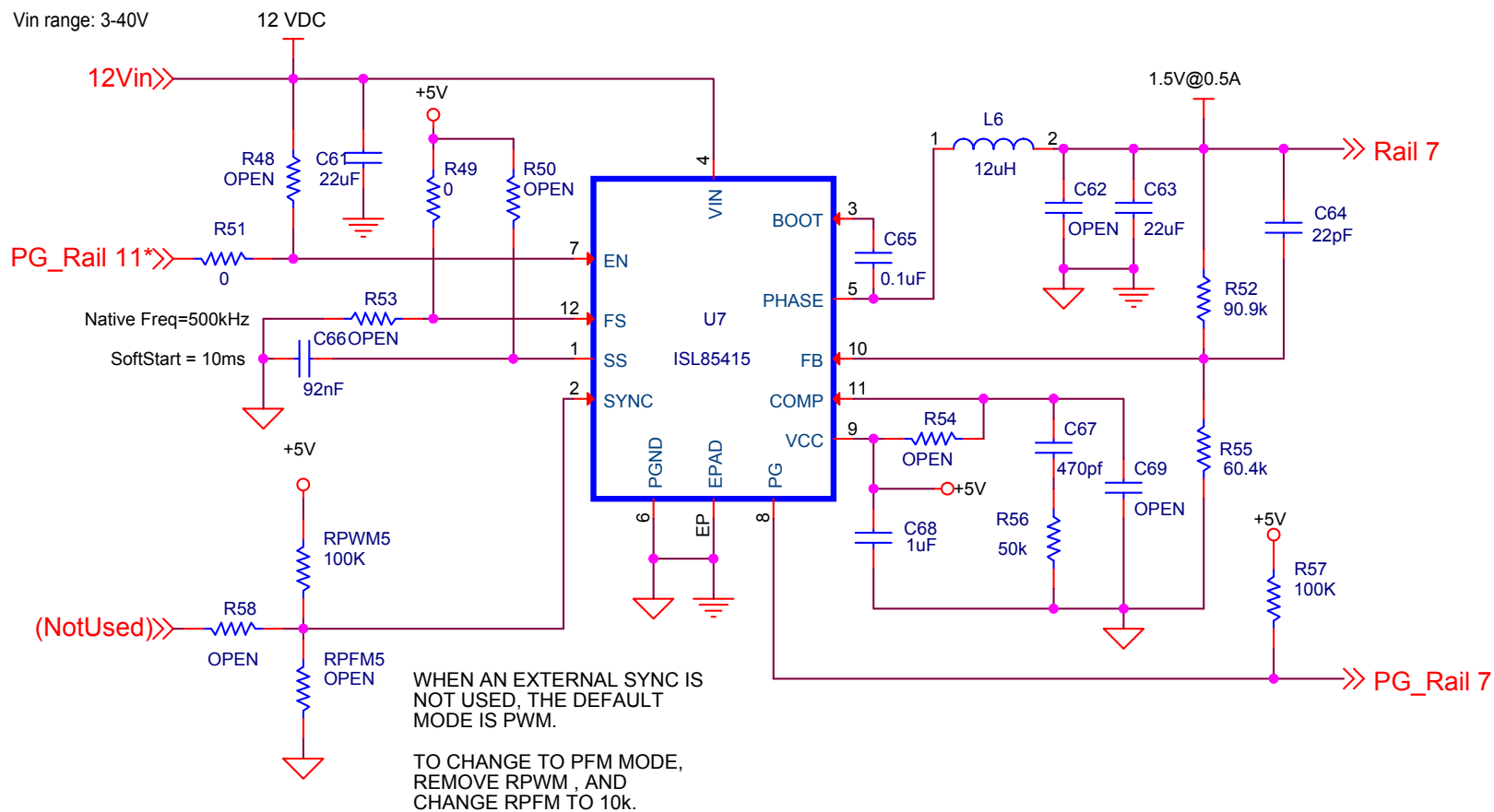
Document Number
<Doc>

Rev

Date: Thursday, March 09, 2017

Sheet 7 of 14

ISL85415 SINGLE OUTPUT (500mA)



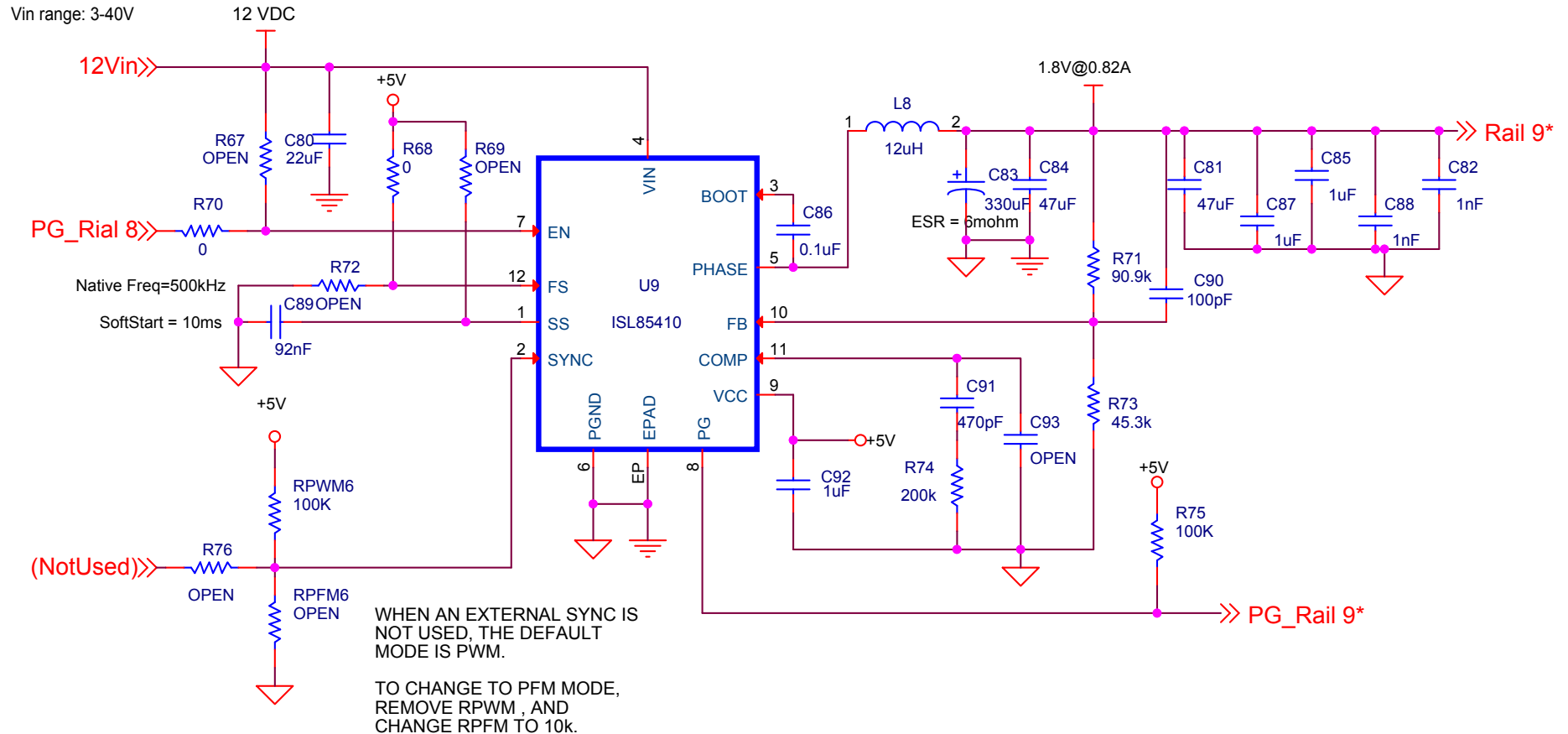
Title		
ISL85415-SINGLE-1		
Size A	Document Number	Rev
Date:	Thursday, March 09, 2017	Sheet 8 of 14

5	4	3	2	1
---	---	---	---	---



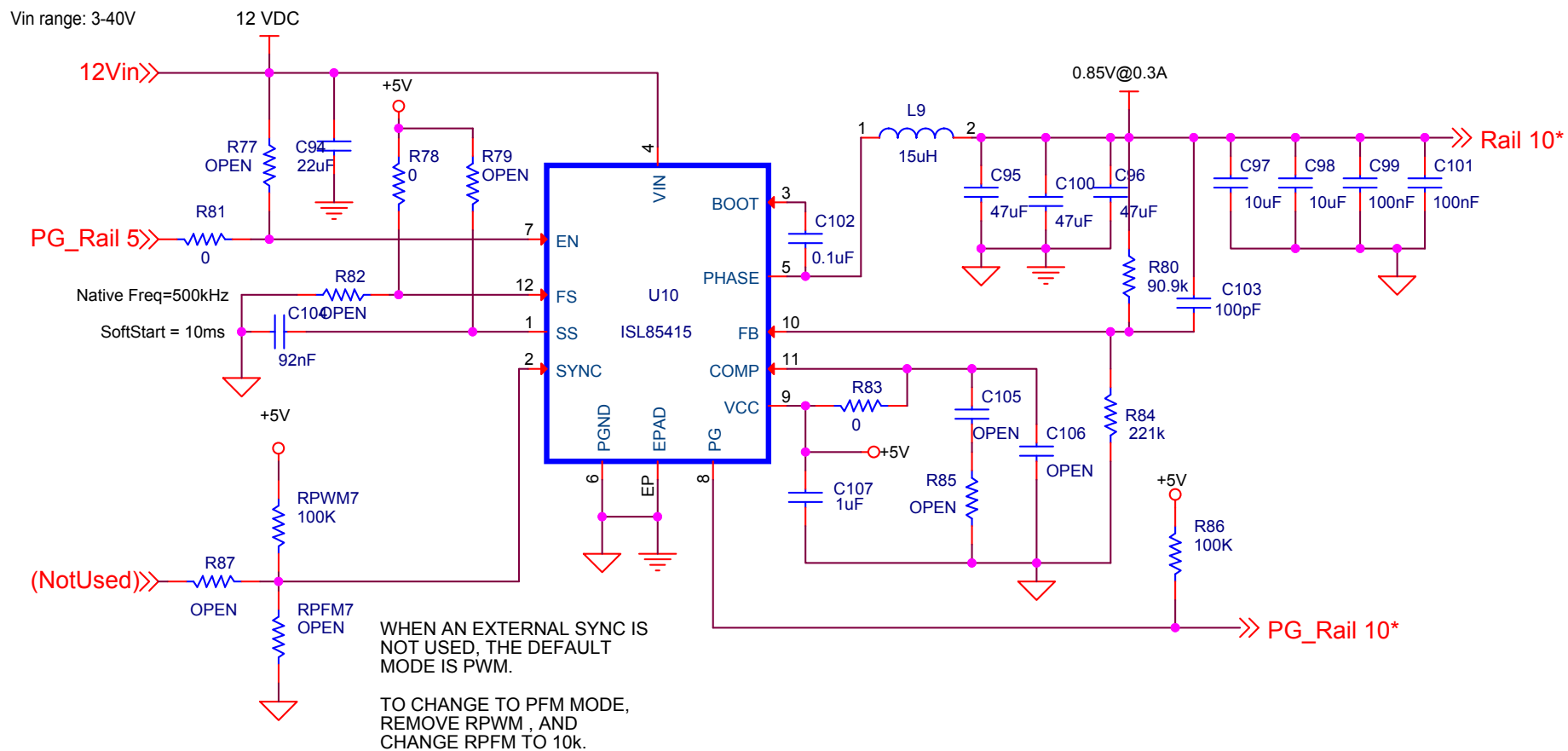
5	4	3	2	1
---	---	---	---	---

ISL85410 SINGLE OUTPUT (1A)



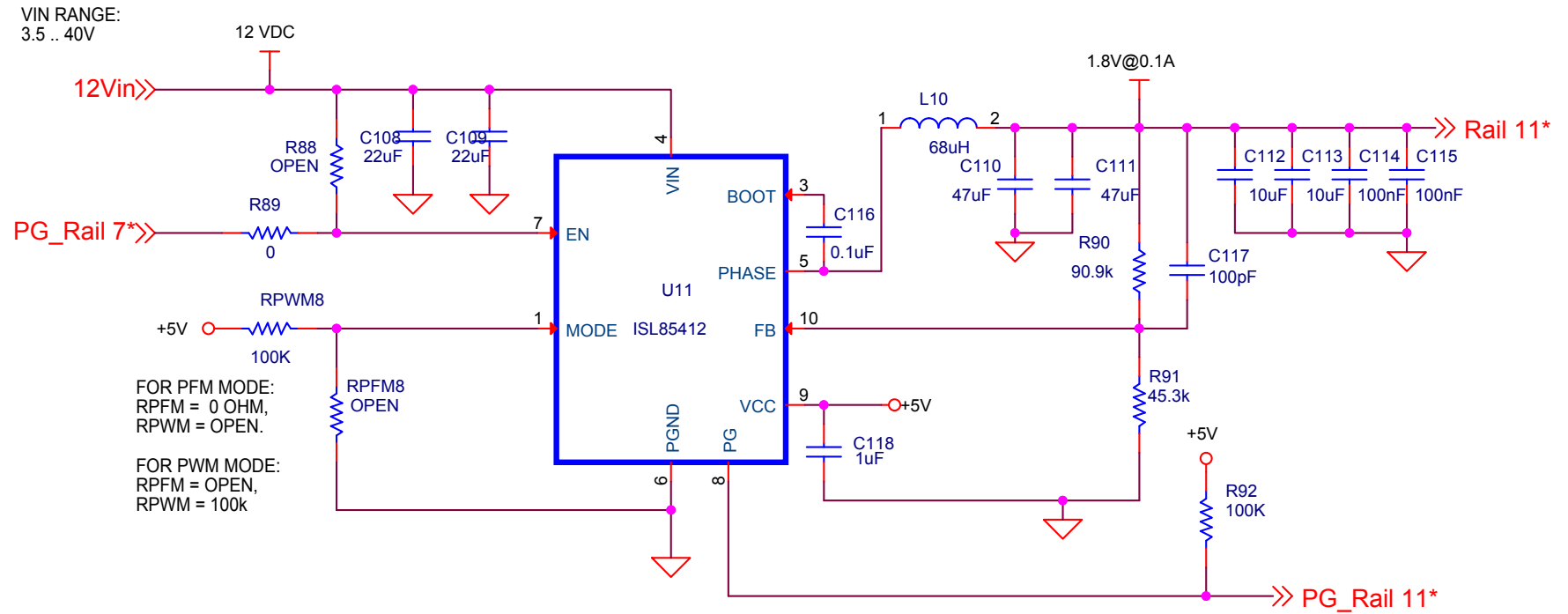
Title		
ISL85410-SINGLE-1		
Size	Document Number	Rev
A		
Date:	Thursday, March 09, 2017	Sheet 10 of 14
	2	1

ISL85415 SINGLE OUTPUT (500mA)



Title		
ISL85415-SINGLE-1		
Size A	Document Number	Rev
Date:	Thursday, March 09, 2017	Sheet 11 of 14

ISL85412 SINGLE OUTPUT (150mA)



Title ISL85412-SINGLE-1

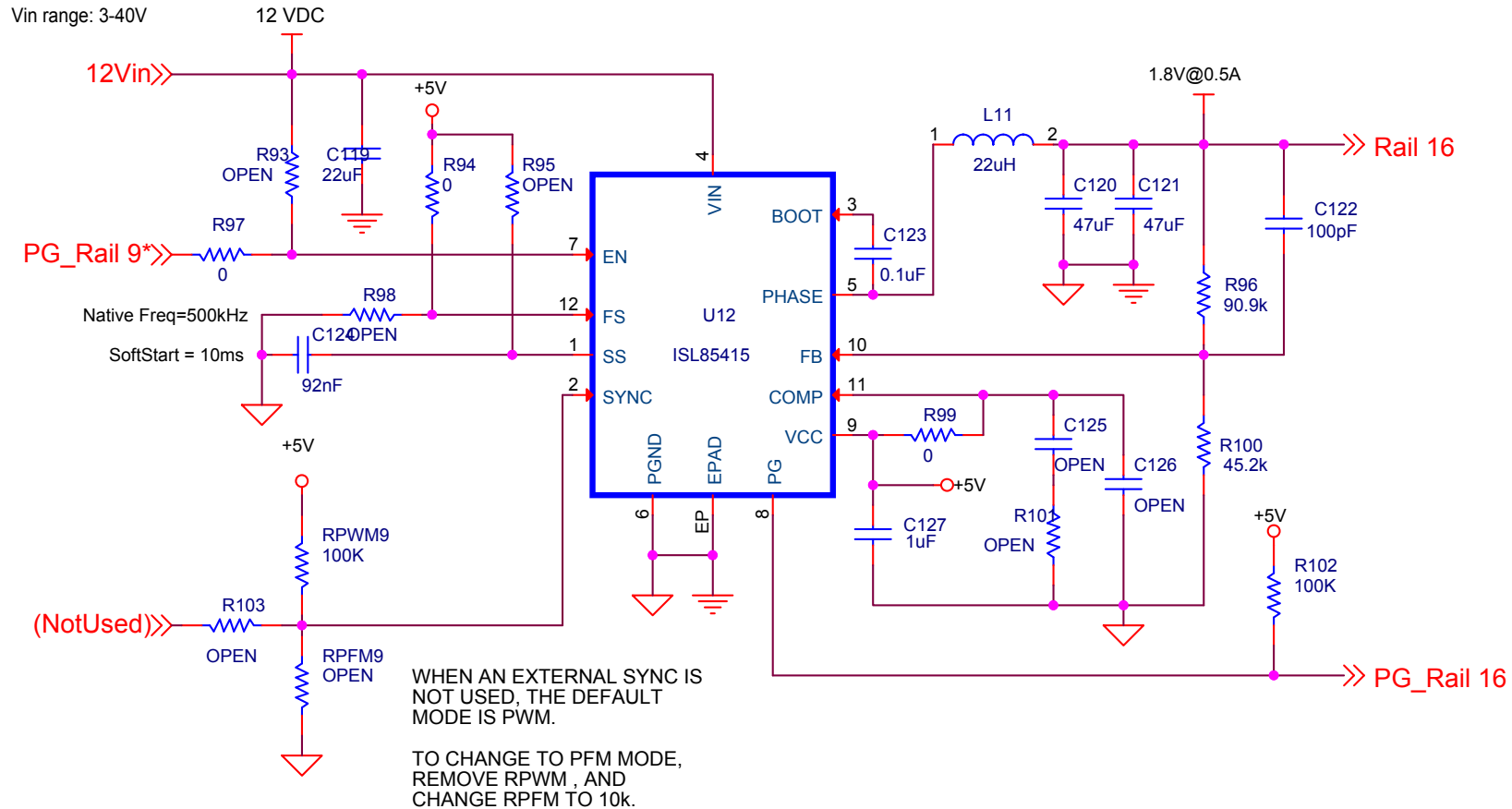
Size A Document Number <Doc>

Rev

Date: Thursday, March 09, 2017

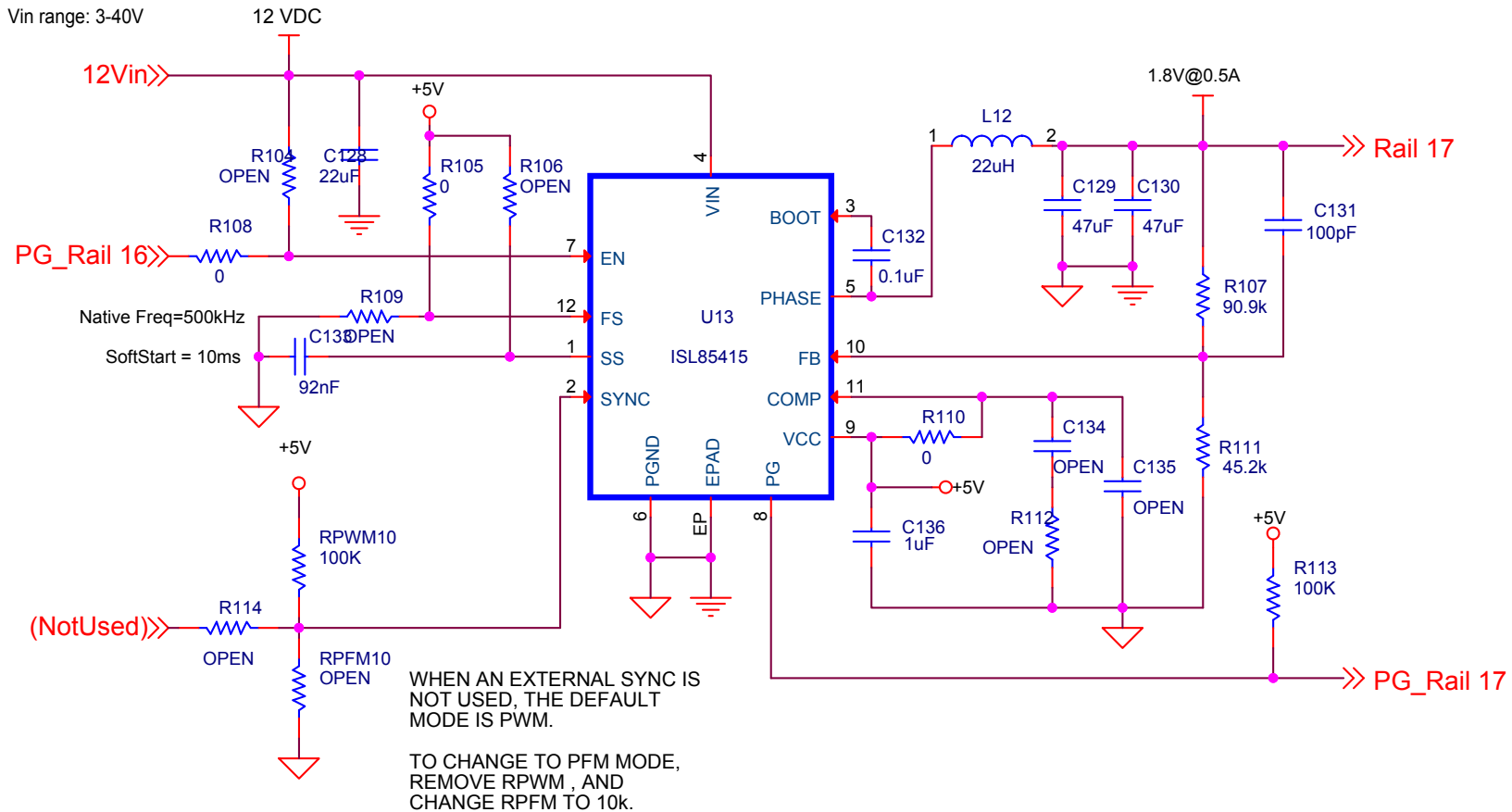
Sheet 12 of 14

ISL85415 SINGLE OUTPUT (500mA)



Title		
ISL85415-SINGLE-1		
Size A	Document Number	Rev
Date:	Thursday, March 09, 2017	Sheet 13 of 14

ISL85415 SINGLE OUTPUT (500mA)



Title			
ISL85415-SINGLE-1			
Size A	Document Number		Rev
Date:	Thursday, March 09, 2017	Sheet	14 of 14