

Outline

Smart Configurator for RX V1.2 will be released on the Web. We will release the standalone edition of the Smart Configurator, which has been previously released as a plug-in for the e² studio integrated development environment. The standalone edition of the Smart Configurator operates in linkage with the CS+ integrated development environment.

1. Features

A Smart Configurator is a utility based on the concept of "software that can be combined freely". This utility has three functions (import of middleware for FIT modules, driver code generation, and pin settings) that ease the embedding of Renesas drivers into your system.

For details about the FIT modules, see the following:

<https://www.renesas.com/solutions/rx-applications/fit/about-fit.html>

➤ Import of middleware for FIT modules

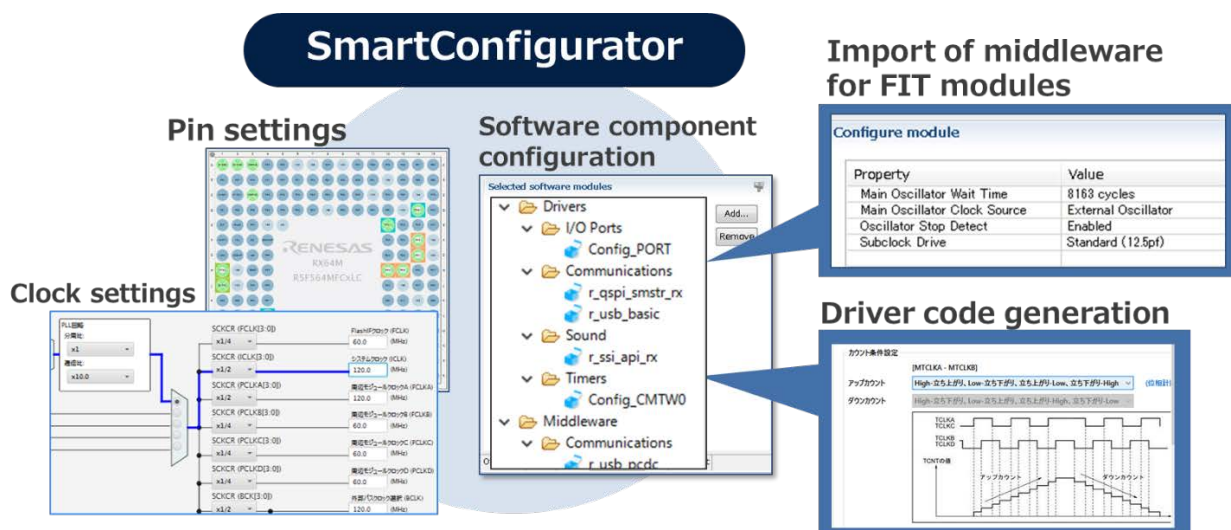
You can import a FIT module, which is a software platform (framework) provided for the RX family, and change settings such as pin settings. You can use this function with driver code generation.

➤ Driver code generation

Peripheral functions are set on the GUI, and the driver code appropriate for the settings is generated. Check for errors in peripheral function settings and changes of channels are also supported.

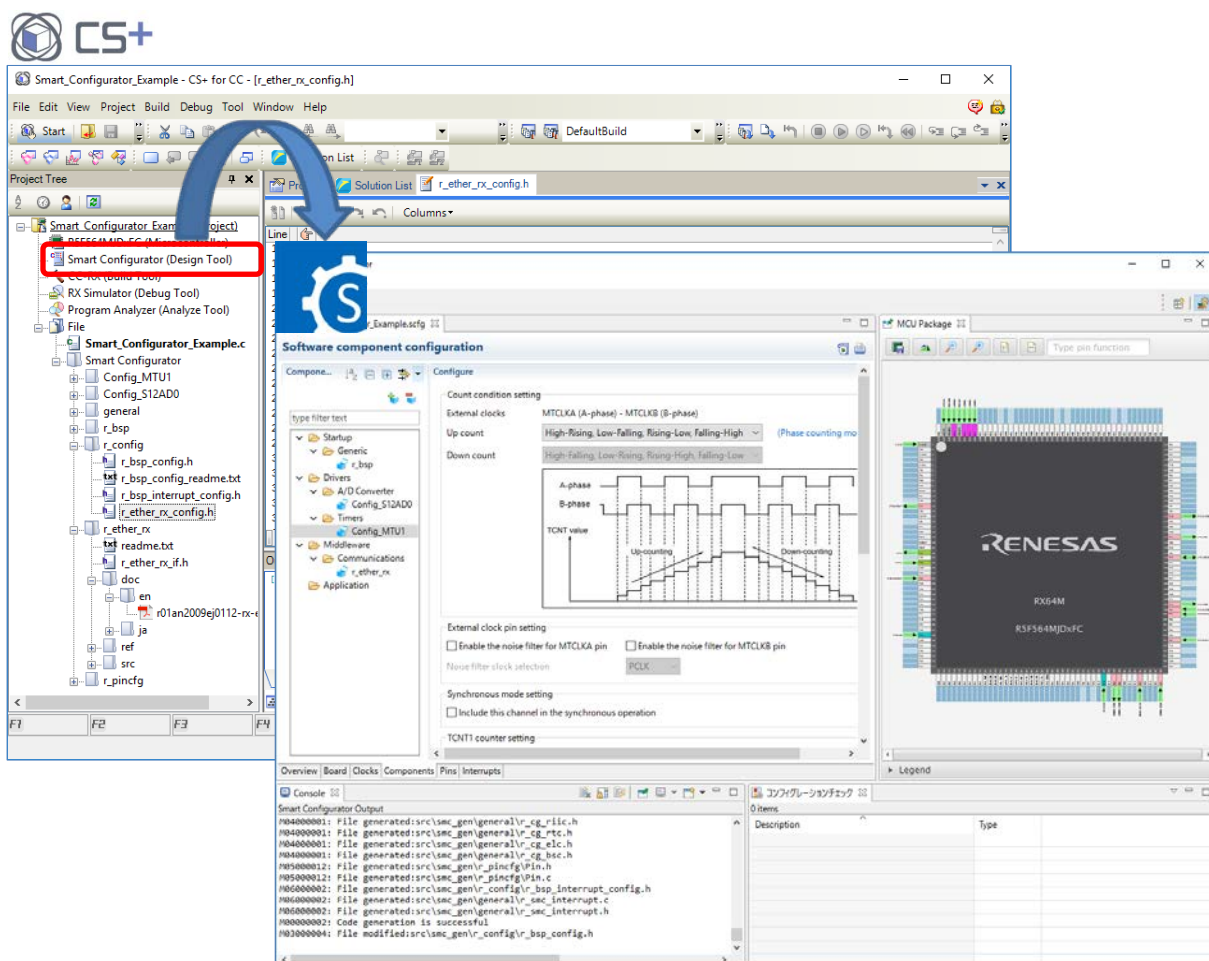
➤ Pin settings

You can use the pin configuration figures and the pin configuration tables to check and, if necessary, solve conflicts in commonly used pins. If a conflict occurs, you can automatically change the assignment destination by the pin assignment change button, and solve the conflict with a single click.



You need to install the CS+ Smart Configurator communication plug-in V1.00 to operate the standalone edition of Smart Configurator in linkage with the CS+ integrated development environment.

The following figure shows the system configuration of the Smart Configurator and the linkage tool CS+. Start the Smart Configurator from CS+, and then set the peripheral functions on the GUI of the Smart Configurator. The Smart Configurator generates a source file according to the specified settings, and then registers it in the project of CS+.



2. Supported MCUs

RX family: RX130, RX64M, RX65N, and RX651 groups

3. Operating Environment

IBM PC/AT compatible

Windows® 10 (32-bit edition, 64-bit edition)

Windows® 8.1 (32-bit edition, 64-bit edition)

Windows® 7 (32-bit edition, 64-bit edition)

Processor: 1 GHz or more (hyper-threading and multi-core CPU are supported)

Memory capacity: 2 GB or greater is recommended. At least 1 GB is required (Windows 10 and a 64-bit edition of Windows require at least 2 GB).

Hard disk capacity: At least 1 GB of free space

Display: Resolution of at least 1024 × 768, with 65,536 or more colors

4. Updating Your Product

Download the installer and plug-in from the URL below to install the program.
The installer is scheduled for posting on August 4.

<https://www.renesas.com/smart-configurator#downloads>

Revision History

Rev.	Date	Description	
		Page	Summary
1.00	Aug. 1, 2017	-	First edition issued

TOYOSU FORESIA, 3-2-24 Toyosu, Koto-ku, Tokyo 135-0061 Japan
 Renesas Electronics Corporation

■Inquiry

<https://www.renesas.com/contact/>

Renesas Electronics has used reasonable care in preparing the information included in this document, but Renesas Electronics does not warrant that such information is error free. Renesas Electronics assumes no liability whatsoever for any damages incurred by you resulting from errors in or omissions from the information included herein.

The past news contents have been based on information at the time of publication.

Now changed or invalid information may be included. The URLs in the Tool News also may be subject to change or become invalid without prior notice.

All trademarks and registered trademarks are the property of their respective owners.