

Outline

Ver.1.13 of RX Family RX Driver Package is now released on the Web.

In this product, supported MCUs have been added to Ver.1.12 of RX Family RX Driver Package and the modules in the packages have been updated.

The product is supplied free of charge.

1. Features

(1) About the RX Driver Package

The RX Driver Package is a software package for using basic functions such as initializing MCUs, self-programming of flash memory, timer control, UART communications, and A/D conversion, and application functions such as USB and Ethernet. (For OS-less environment)

Components

- FIT middleware module
- FIT interface module
- FIT peripheral function device driver module
- Board support package (BSP) module

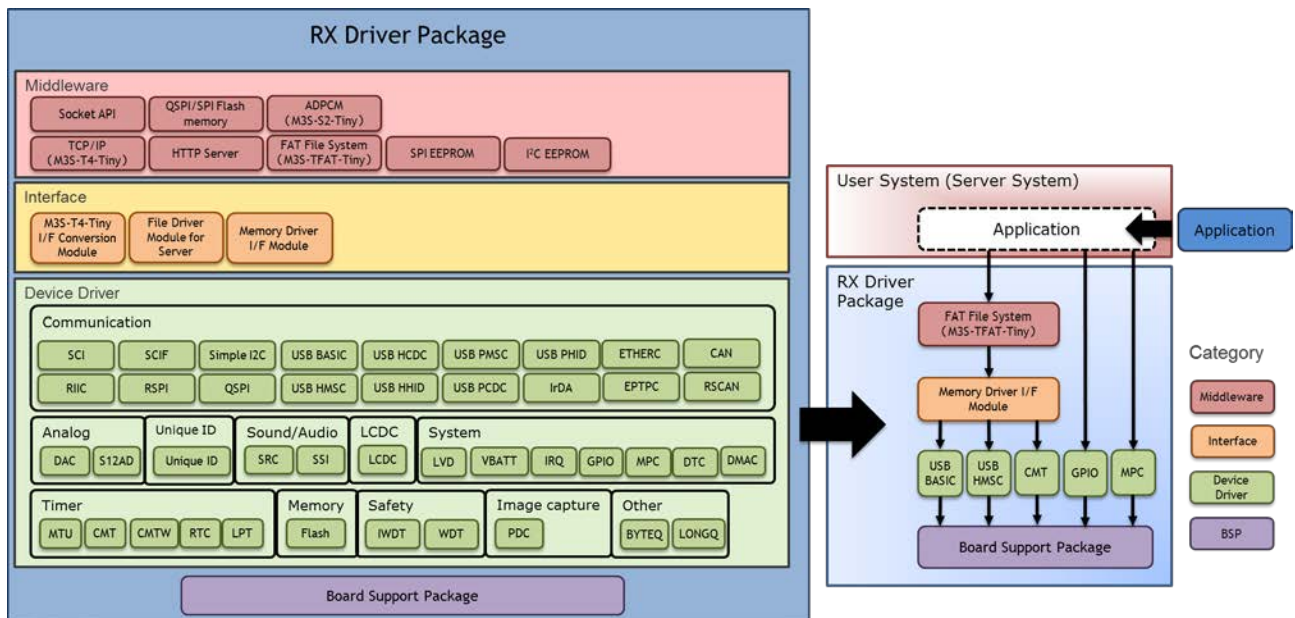


Figure 1 Construction Image

- (2) Major Modifications from Ver.1.12 to Ver.1.13 of RX Family RX Driver Package
- (a) Addition of supported MCUs
 - The RX65N group (code flash memory capacity of 1.5 MB or greater) is supported.
 - (b) Updating of drivers
 - Board support package (BSP): The MCUs in (a) above are supported.
 - FIT peripheral function module: The MCUs in (a) above are supported.
 - FIT middleware module: The MCUs shown in section 2 are supported.

2. Supported MCUs

RX110, RX111, RX113, RX130, RX210, RX230, RX231, RX23T, RX24T, and RX24U groups
RX63N, RX64M, RX65N, RX651, and RX71M groups

3. Operating Environment

The following shows the main operating environment. For details, refer to the application notes* for this product.

- Integrated development environment: e² studio V6.0.0 and later versions
- Cross tool: V2.07.00 of C/C++ Compiler Package for RX Family
- Emulators: E1, E20, and E2 emulator Lite

*: Refer to section 4 for information on how to obtain the application notes.

4. Obtaining the Application Notes

Use one of the following methods to obtain Ver. 1.13 of RX Family RX Driver Package containing the application note to be used for e² studio:

- Starting e² studio and using the Smart Configurator*
- Starting e² studio and using the FIT Configurator*

*: You can obtain the application note from e² studio without accessing the Renesas website.

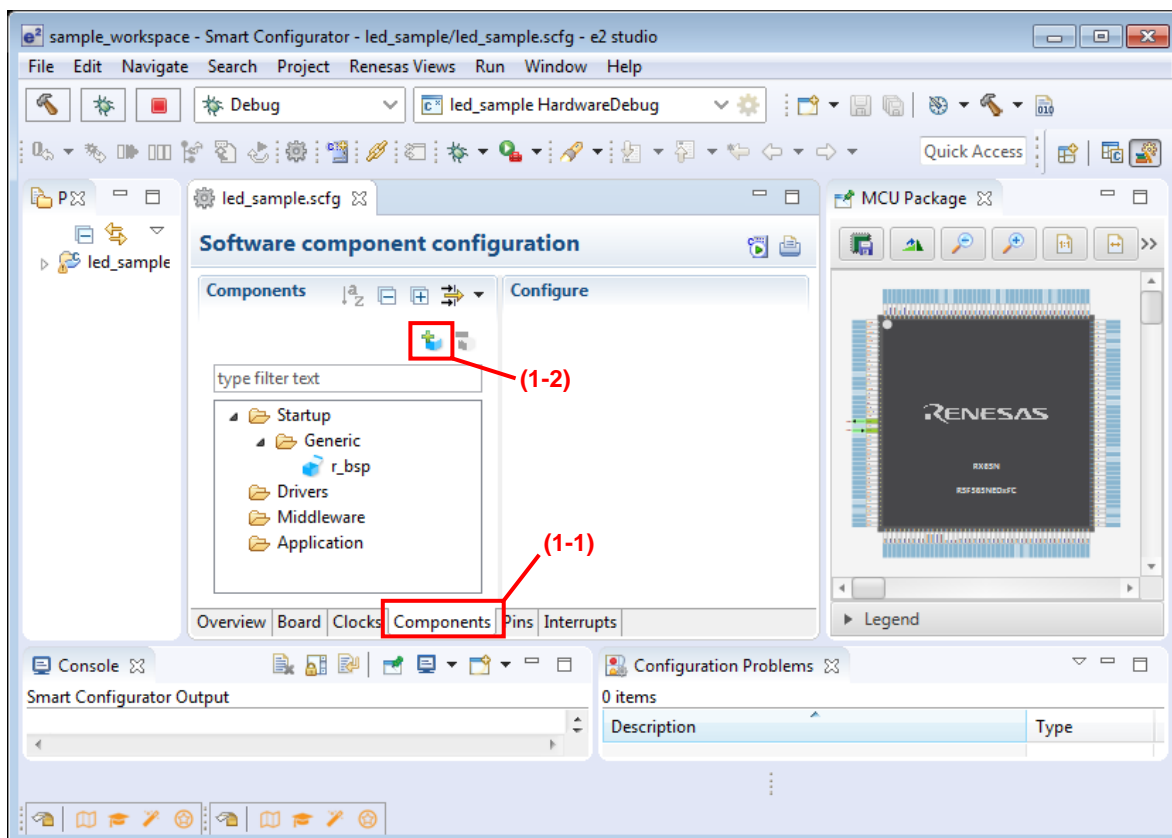
The following describes the download procedure. The display examples use e² studio V6.0.0.

4.1 Using the Smart Configurator

Use e² studio to create a new project, and then proceed with the project creation processing until the Software Component Selection page appears.

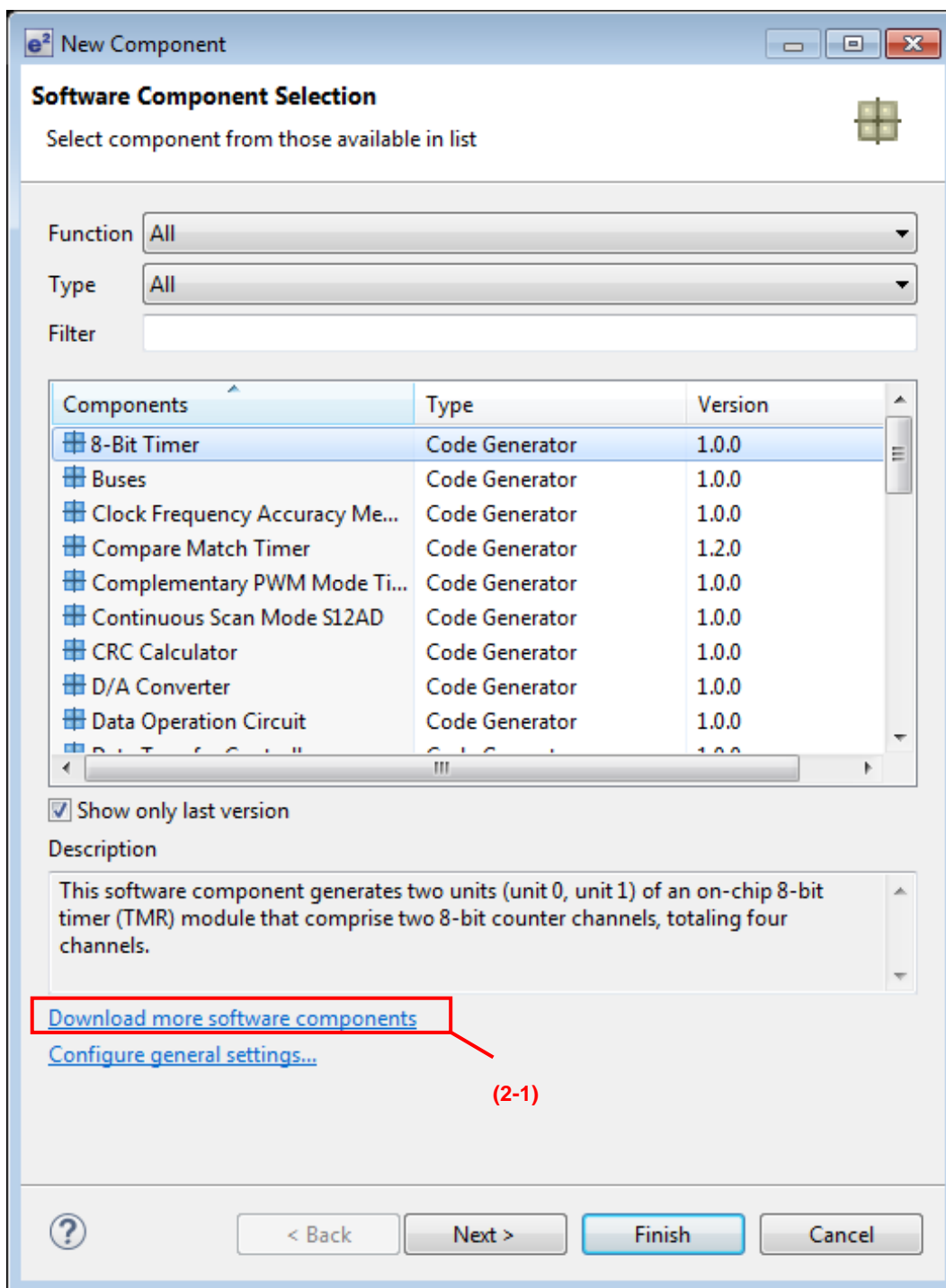
(1) On the Software component configuration page, specify the following settings:

- (1-1) Select the [Components] tab.
- (1-2) Click the button for adding components.



(2) On the Software Component Selection page, specify the following settings:

(2-1) Click [Download more software components].



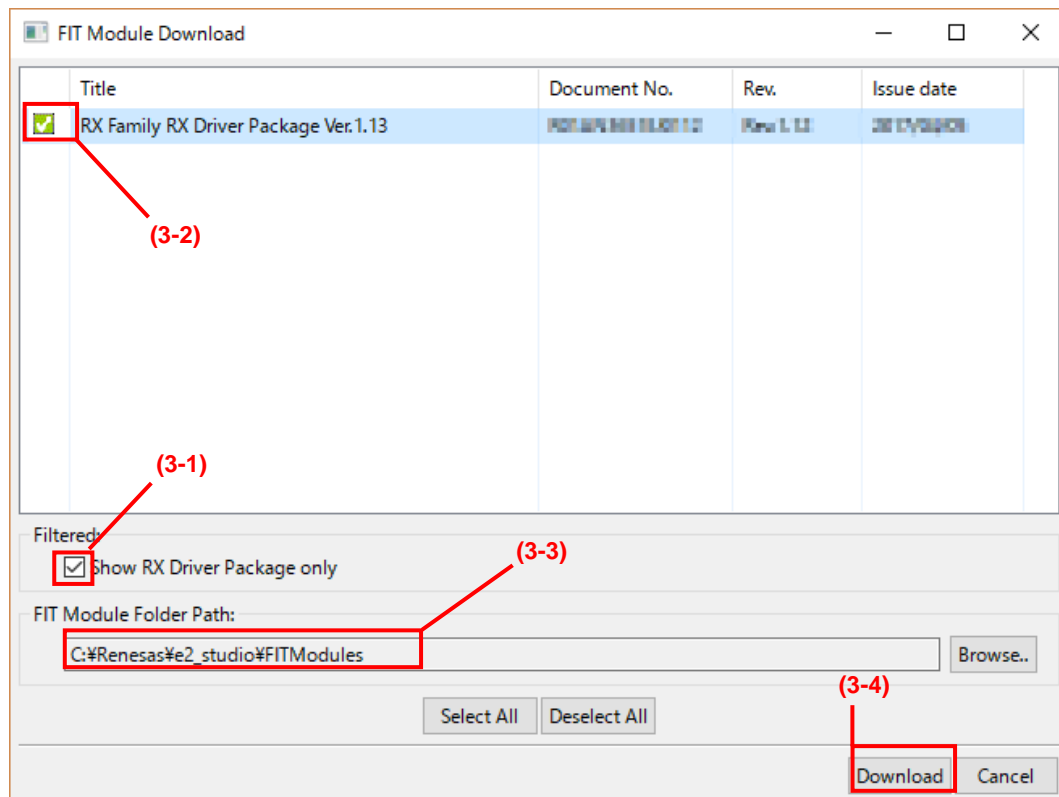
(3) On the FIT Module Download page, specify the following settings:

(3-1) Select [Show RX Driver Package only].

(3-2) Select the displayed [RX Family RX Driver Package Ver.1.13] check box.

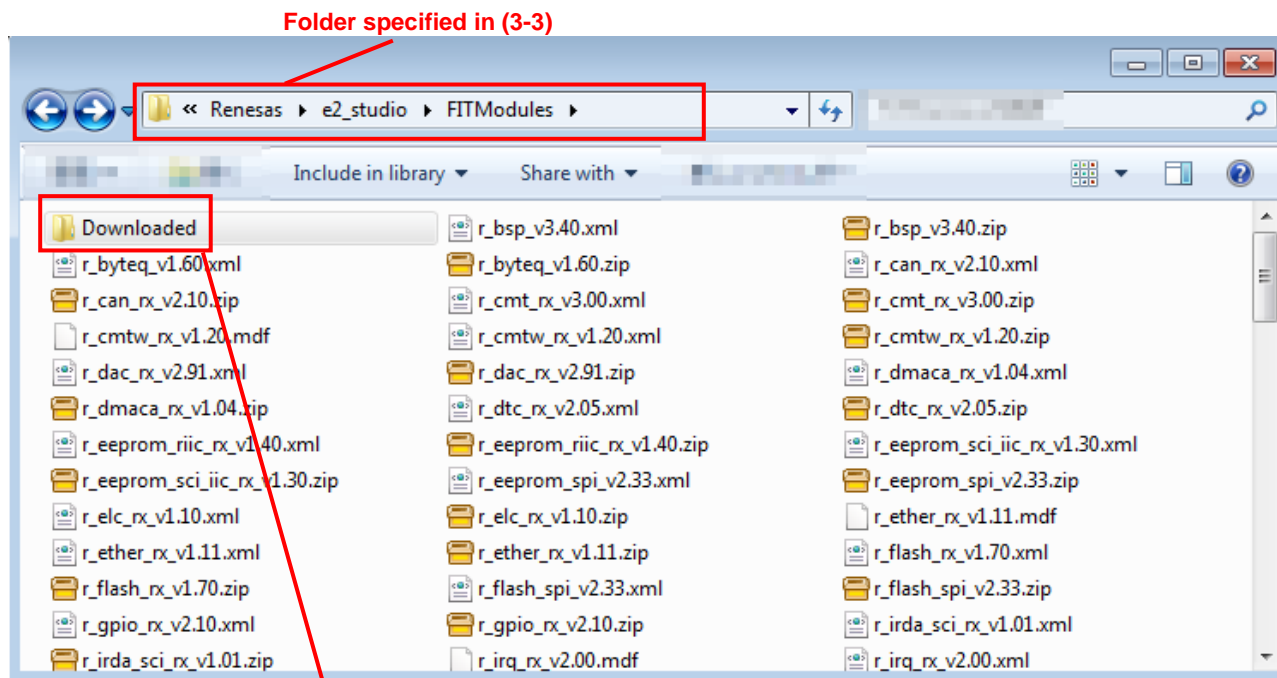
(3-3) Specify the location in which the FIT module is to be saved.

(3-4) Click [Download].



(4) RX Family RX Driver Package Ver.1.13 is saved in the folder specified in (3-3).

In the Downloaded folder, the ZIP file of this package containing the application note is saved.



The ZIP file of this package containing the application note is stored.
(an-r01an****jj****-rx-fit.zip)

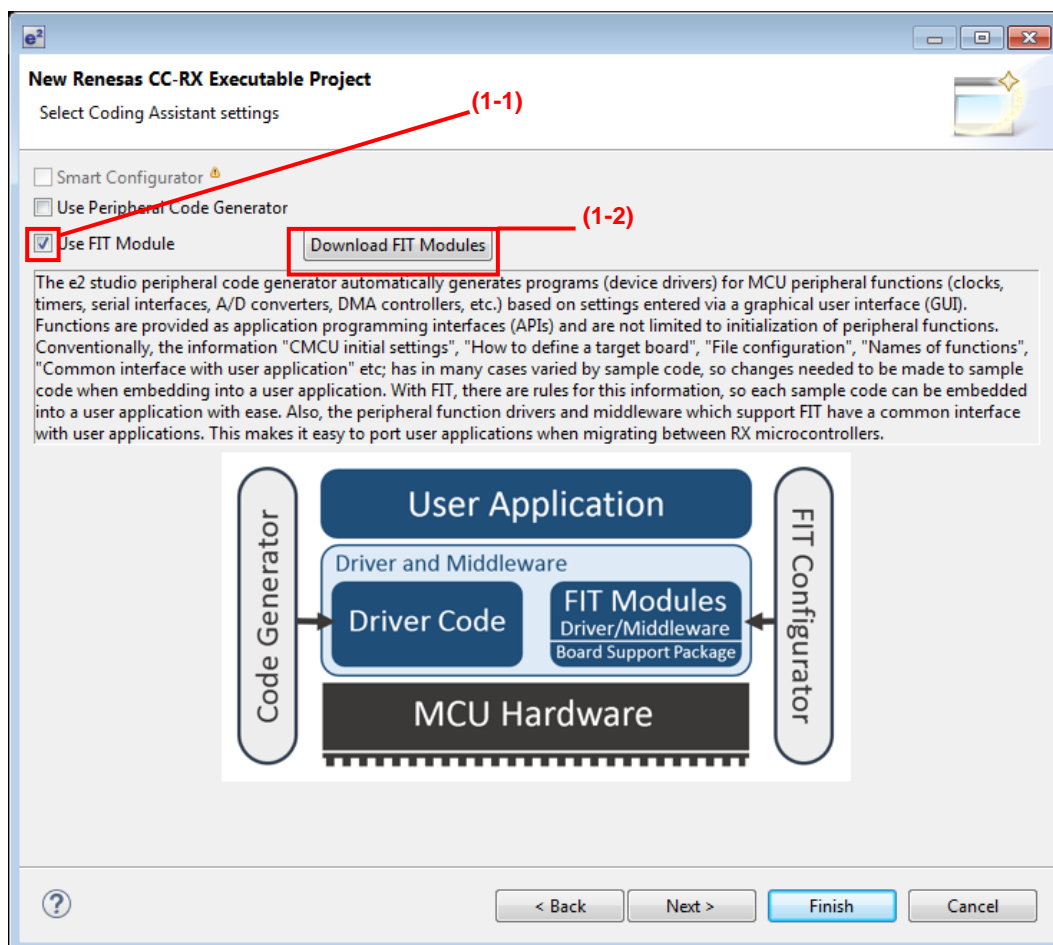
4.2 Using the FIT Configurator

Use e² studio to create a new project, and then proceed with the project creation processing until the Select Coding Assistant settings page appears.

(1) On the Select Coding Assistant settings page, specify the following settings:

(1-1) Select the [Use FIT Module] check box.

(1-2) Click [Download FIT Modules].



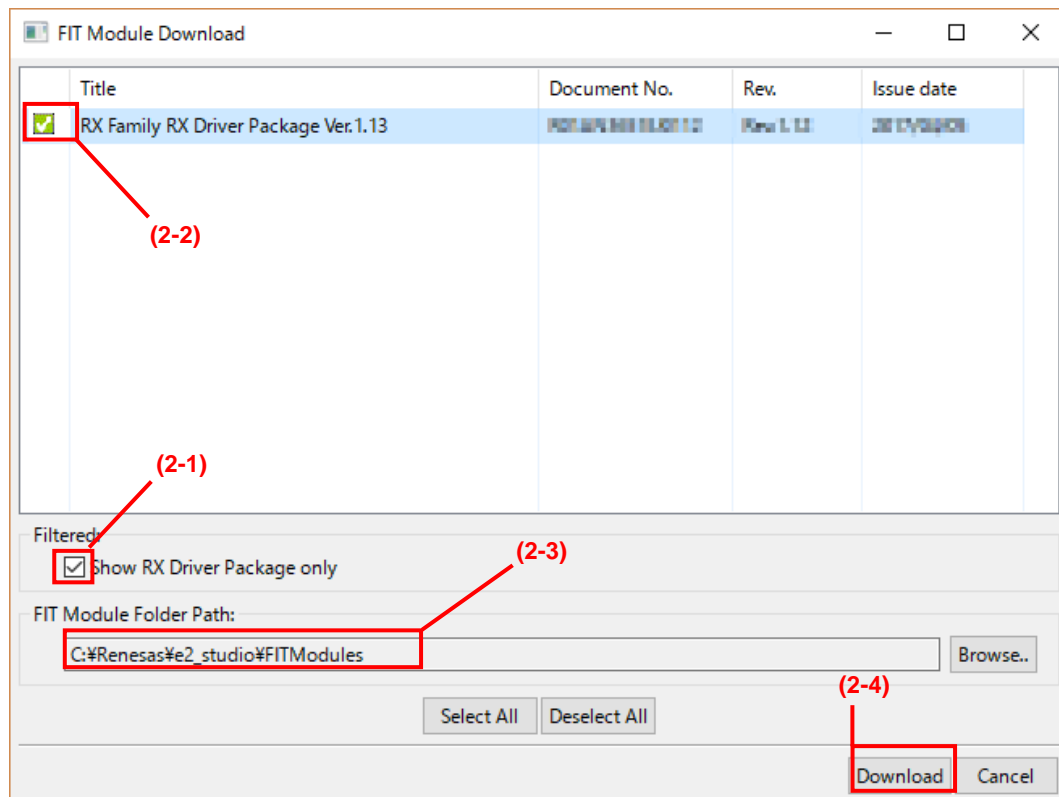
(2) On the FIT Module Download page, specify the following settings:

(2-1) Select [Show RX Driver Package only].

(2-2) Select the displayed [RX Family RX Driver Package Ver.1.13] check box.

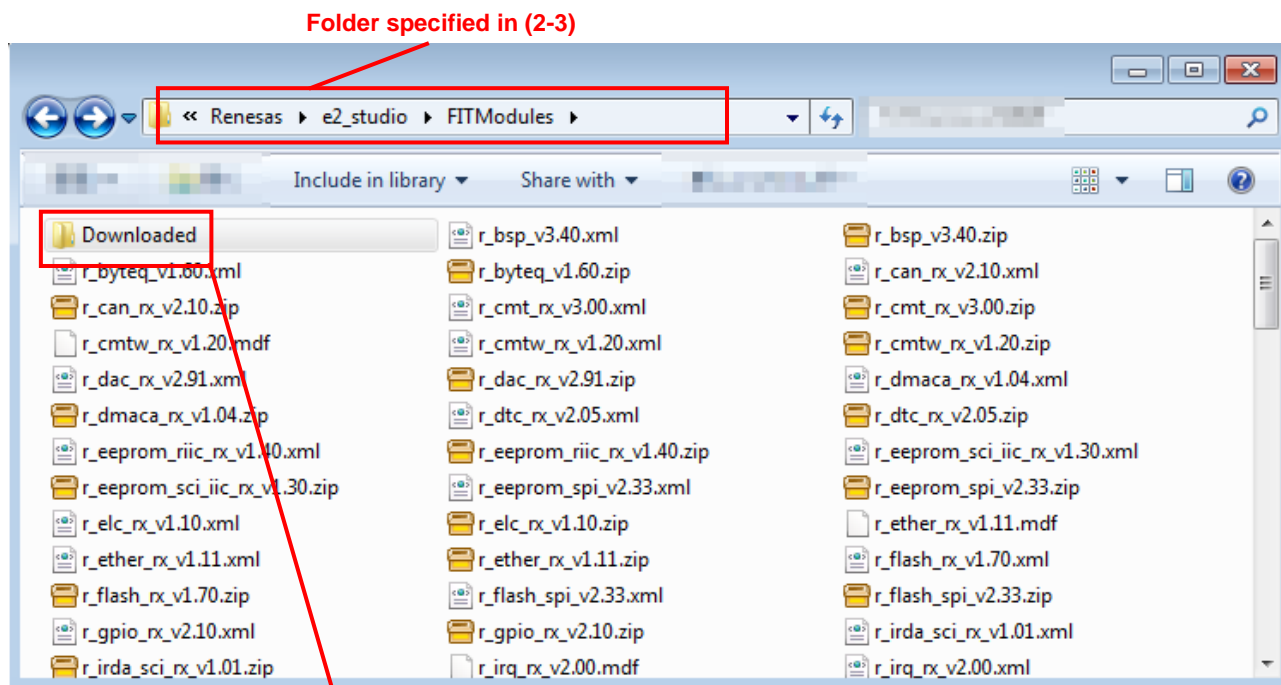
(2-3) Specify the location in which the FIT module is to be saved.

(2-4) Click [Download].



(3) RX Family RX Driver Package Ver.1.13 is saved in the folder specified in (2-3).

In the Downloaded folder, the ZIP file of this package containing the application note is saved.



The ZIP file of this package containing the application note is stored. (an-r01an****jj****-rx-fit.zip)

5. Appendix

5.1 Introduction of the RX Driver Package dedicated page

The Renesas website provides a page dedicated to the RX Driver Package.

This page provides descriptions of upgrades for various types of Firmware Integration Technology (FIT) modules included in the RX Driver Package, precautionary notes, and past versions of the RX Driver Package.

Refer to the URL below.

<https://www.renesas.com/rdp>

Revision History

Rev.	Date	Description	
		Page	Summary
1.00	Nov. 16, 2017	-	First edition issued
1.01	Dec. 1, 2017	3	Unnecessary garbled characters in section 4 deleted

TOYOSU FORESIA, 3-2-24 Toyosu, Koto-ku, Tokyo 135-0061 Japan
 Renesas Electronics Corporation

■Inquiry

<https://www.renesas.com/contact/>

Renesas Electronics has used reasonable care in preparing the information included in this document, but Renesas Electronics does not warrant that such information is error free. Renesas Electronics assumes no liability whatsoever for any damages incurred by you resulting from errors in or omissions from the information included herein.

The past news contents have been based on information at the time of publication.

Now changed or invalid information may be included. The URLs in the Tool News also may be subject to change or become invalid without prior notice.

All trademarks and registered trademarks are the property of their respective owners.