

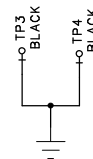
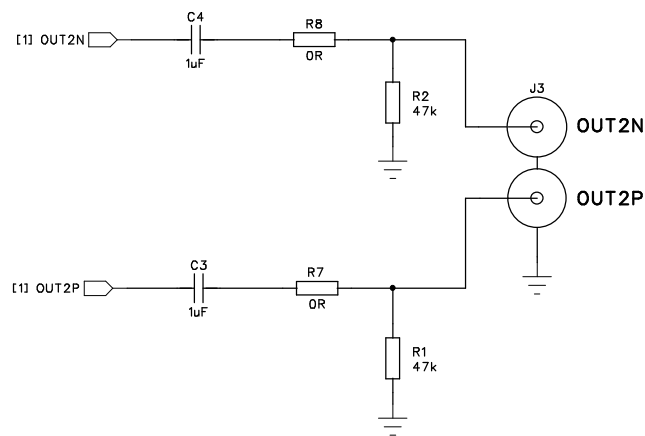
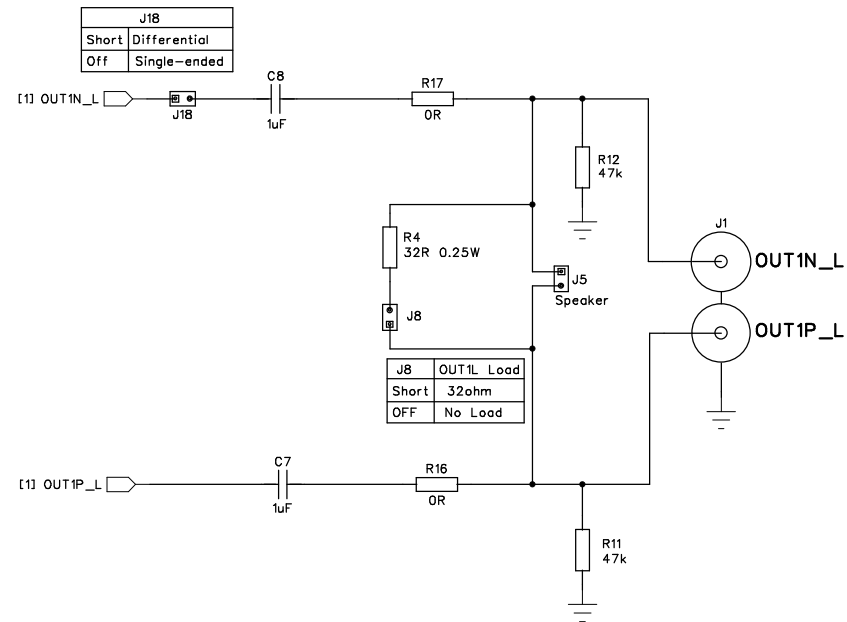
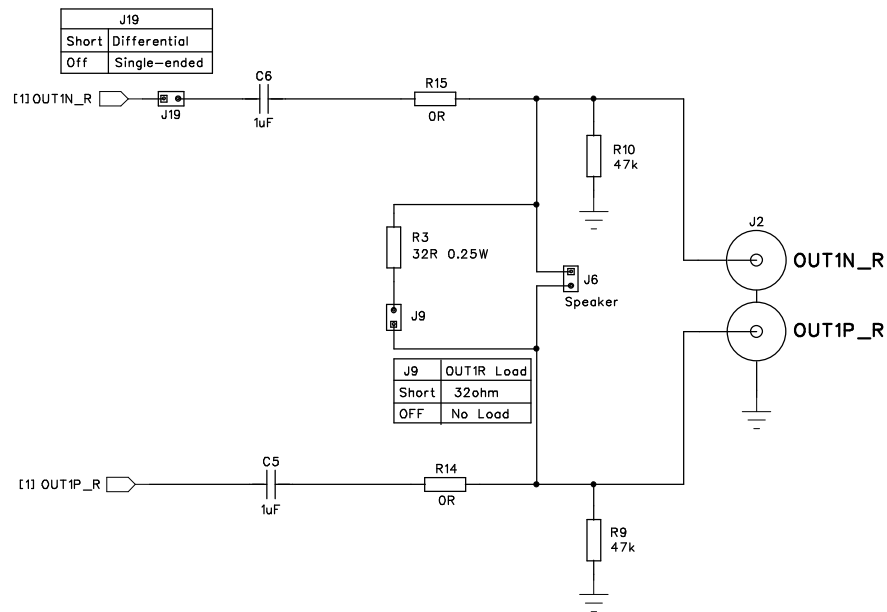
CONFIDENTIAL INFORMATION

SCHEMATIC TEMPLATE REV PAT (May 13, 2005) DIALOG DOCUMENT NUMBER 31-008-03

PREPARED: MDT	DATED: 01/09/2010	COMPANY: <b>DIALOG SEMICONDUCTOR</b>	
RESPONSIBLE: MDT	DATED: 17/06/2010	TITLE: <b>Cathy Customer Evaluation Board</b>	
SHEET NAME: <b>S/PDIF_INPUT</b>		DRAWING NO: <b>44-179-93-02-C</b>	REV: <b>1.4</b>
		PAGE:	<b>4 OF 11</b>




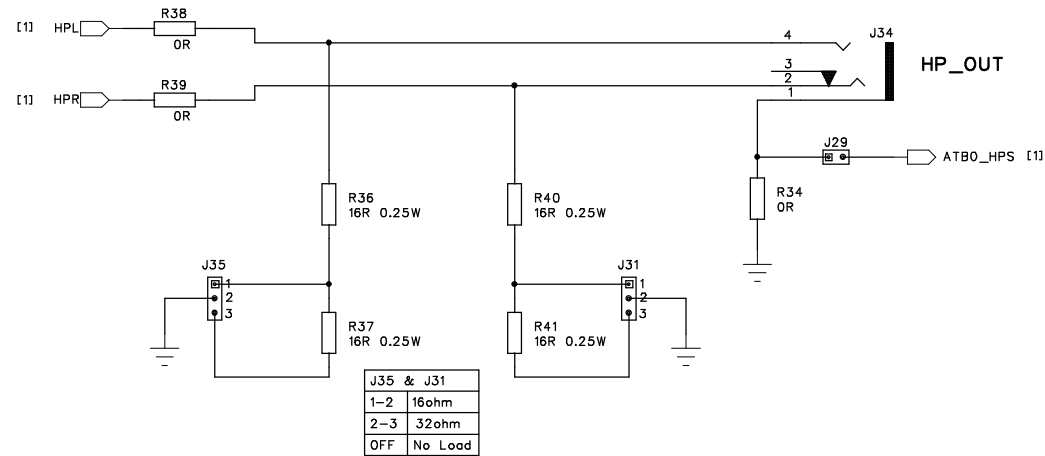




CONFIDENTIAL INFORMATION


SCHEMATIC TEMPLATE REV PAT (May 13, 2003) DIALOG DOCUMENT NUMBER 31-608-03

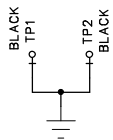
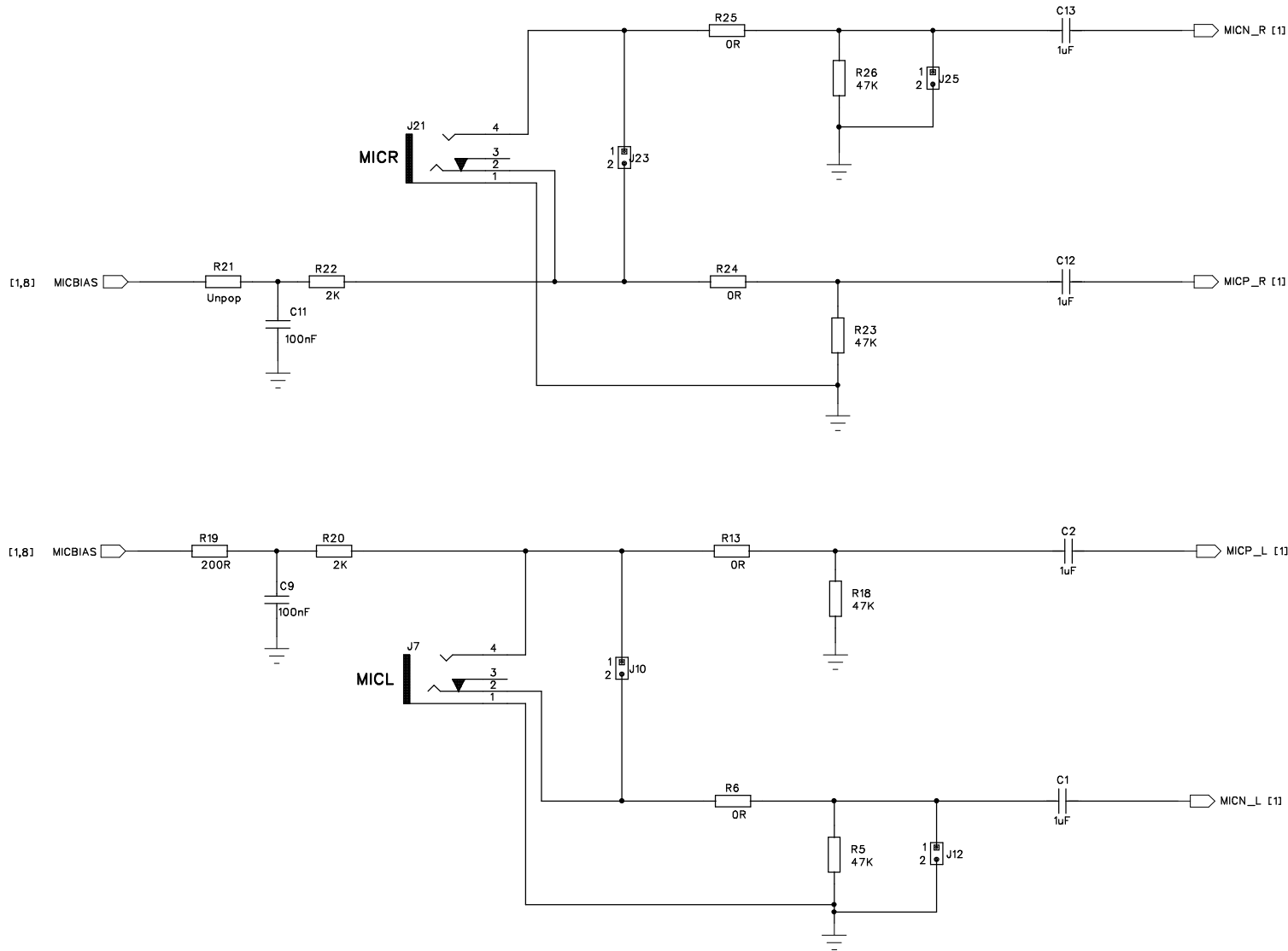
PREPARED: MDT	DATED: 01/09/2010	COMPANY: DIALOG SEMICONDUCTOR		
RESPONSIBLE: MDT	DATED: 17/06/2010	TITLE: Cathy Customer Evaluation Board		
SHEET NAME: LINE_OUTPUT		DRAWING NO: 44-179-93-02-C	REV: 1.4	PAGE: 6 OF 11



CONFIDENTIAL INFORMATION


SCHEMATIC TEMPLATE REV PA1 (Mar 13, 2005) DIALOG DOCUMENT NUMBER 31-902-03

PREPARED: MDT	DATED: 01/09/2010	COMPANY: DIALOG SEMICONDUCTOR	
RESPONSIBLE: MDT	DATED: 17/06/2010	TITLE: Cathy Customer Evaluation Board	
SHEET NAME: HP_OUTPUT	DRAWING NO: 44-179-93-02-C	REV: 1.4	PAGE: 7 OF 11

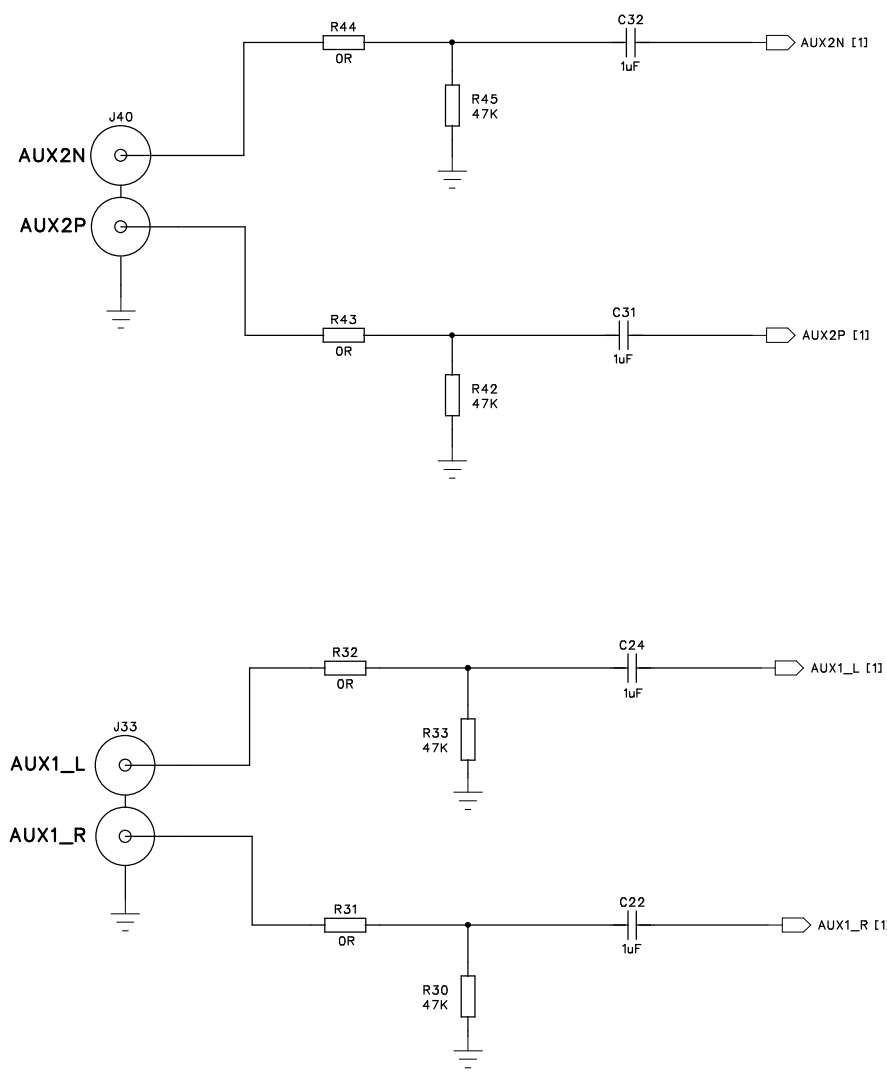


CONFIDENTIAL INFORMATION

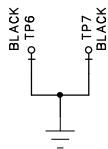
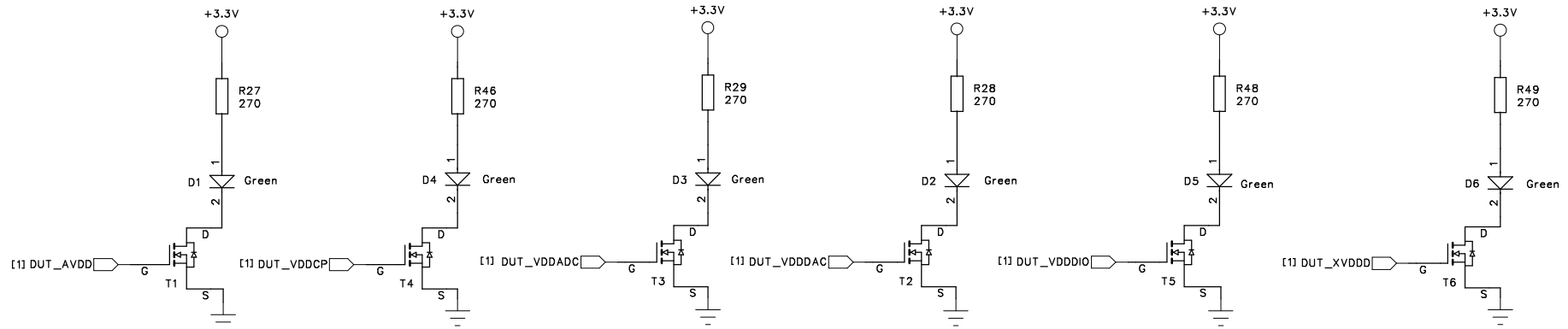
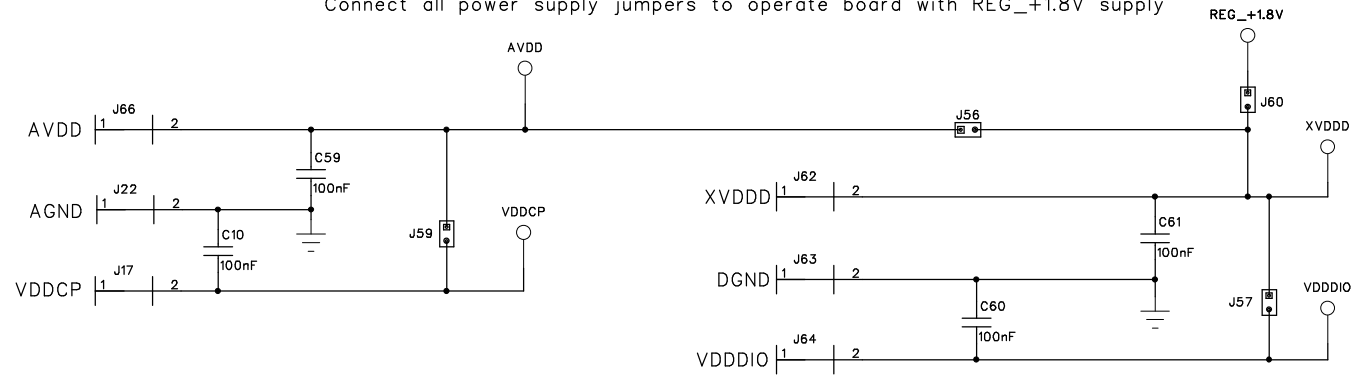
SCHEMATIC TEMPLATE REV PAT (Mar 13, 2005) DIALOG DOCUMENT NUMBER 31-902-03

PREPARED: MDT	DATED: 01/09/2010	COMPANY: DIALOG SEMICONDUCTOR	
RESPONSIBLE: MDT	DATED: 17/06/2010	TITLE: Cathy Customer Evaluation Board	
SHEET NAME: MIC_INPUT	DRAWING NO: 44-179-93-02-C	REV: 1.4	PAGE: 8 OF 11





Connect all power supply jumpers to operate board with REG\_+1.8V supply



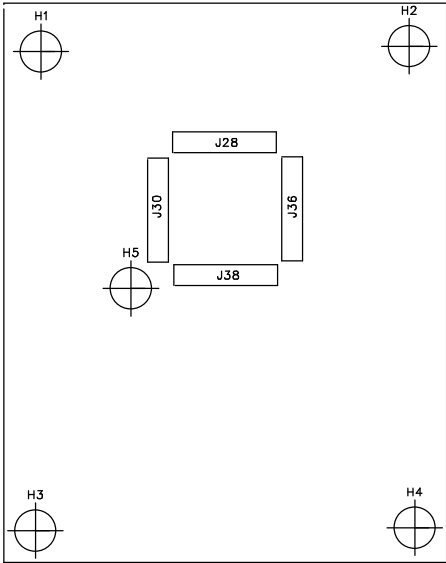
CONFIDENTIAL INFORMATION

SCHEMATIC TEMPLATE REV PA1 (Mar 13, 2005) DIALOG DOCUMENT NUMBER 31-902-03


PREPARED: MDT	DATED: 01/09/2010	COMPANY: <b>DIALOG SEMICONDUCTOR</b>	
RESPONSIBLE: MDT	DATED: 17/06/2010	TITLE: <b>Cathy Customer Evaluation Board</b>	
SHEET NAME: <b>POWER</b>		DRAWING NO: <b>44-179-93-02-C</b>	REV: <b>1.4</b>
		PAGE:	<b>10 OF 11</b>



REV	DATE	ENGINEER	NOTES
1.0	28 Apr 2010	MT	Initial version based on 44-179-93-02-B
1.1	04 May 2010	MT	C4-C9 changed to 1uF. TP5 and 8 removed. AUX1L/R nets swapped at J33. LS_EXT net removed. HPL/R nets swapped at R33 and R35
1.2	05 May 2010	MT	OUT2P and OUT2N nets swapped at C4 and C5. MICN_R and MICP_R swapped at C12 and C13. R21, R22, C11 and J25 also moved. AUX1_L and AUX1_R silkscreen names swapped
1.3	05 May 2010	MT	J48 0ohm resistor name changed to R68
1.4	16 Jun 2010	MT	Double phono schematic symbol modified to resemble connector orientation of physical part. U1, C14-C21, C23, C26-C30 and R35 made Unpop



Mounting holes in corners, one close to centre of the board

CONFIDENTIAL INFORMATION			SCHEMATIC TEMPLATE REV PA1 (Rev 13, 2009) DIALOG DOCUMENT NUMBER 31-908-03		
PREPARED:	DATED:	COMPANY:			
MDT	01/09/2010	DIALOG SEMICONDUCTOR			
RESPONSIBLE:	DATED:	TITLE:			
MDT	17/06/2010	Cathy Customer Evaluation Board			
SHEET NAME:		DRAWING NO:		REV:	PAGE:
REVISION_INFO		44-179-93-02-C		1.4	11 OF 11