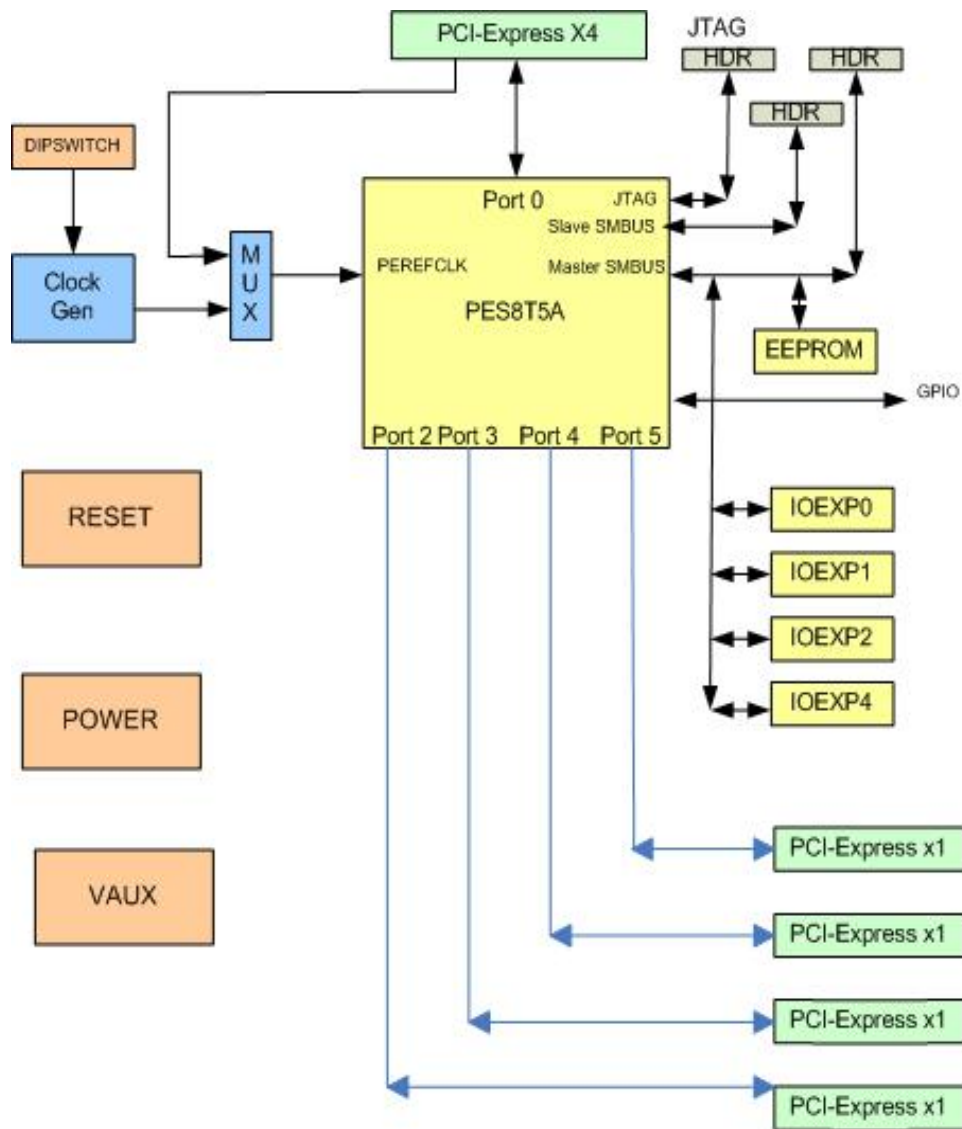

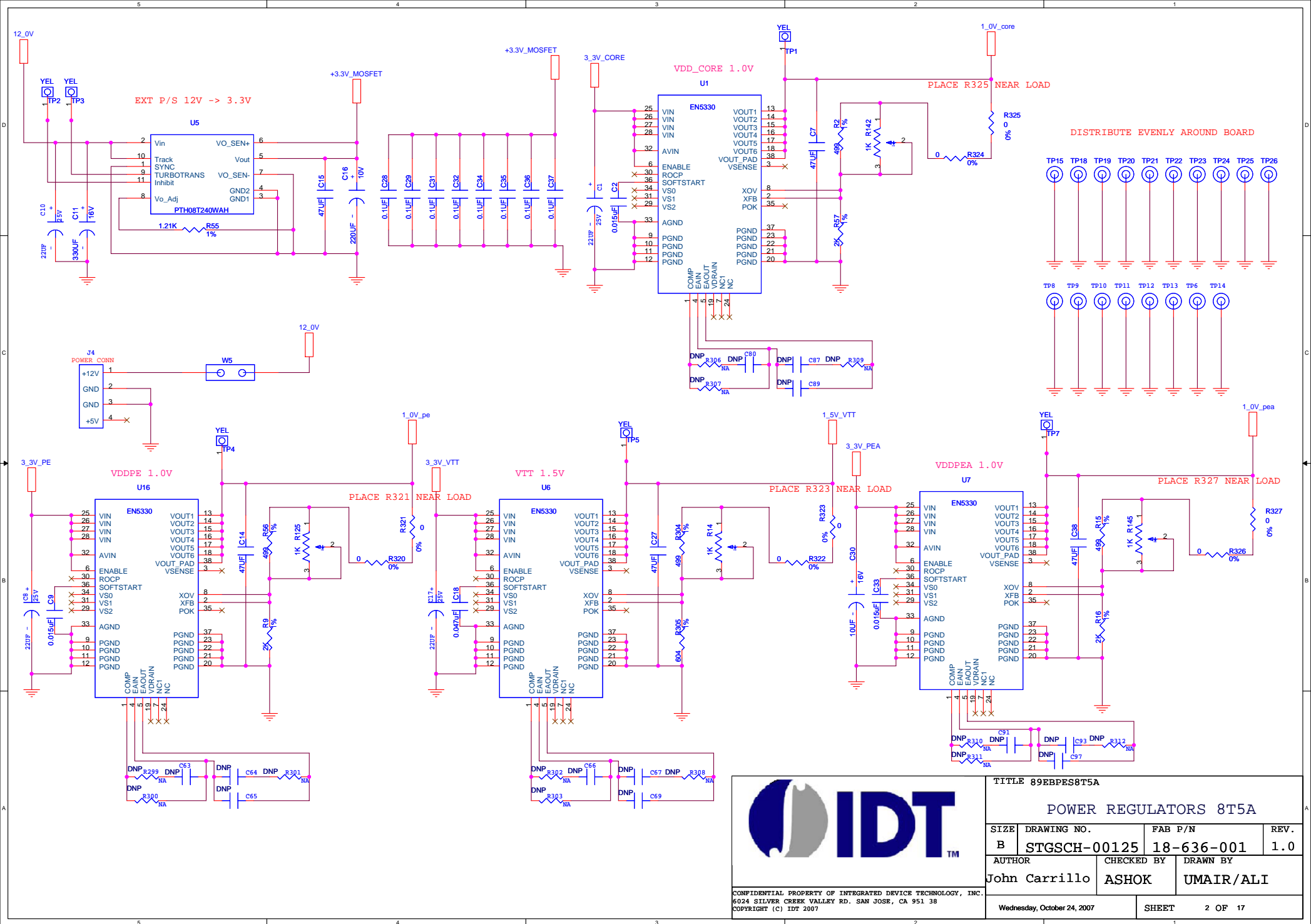


# BLOCK DAIGRAM



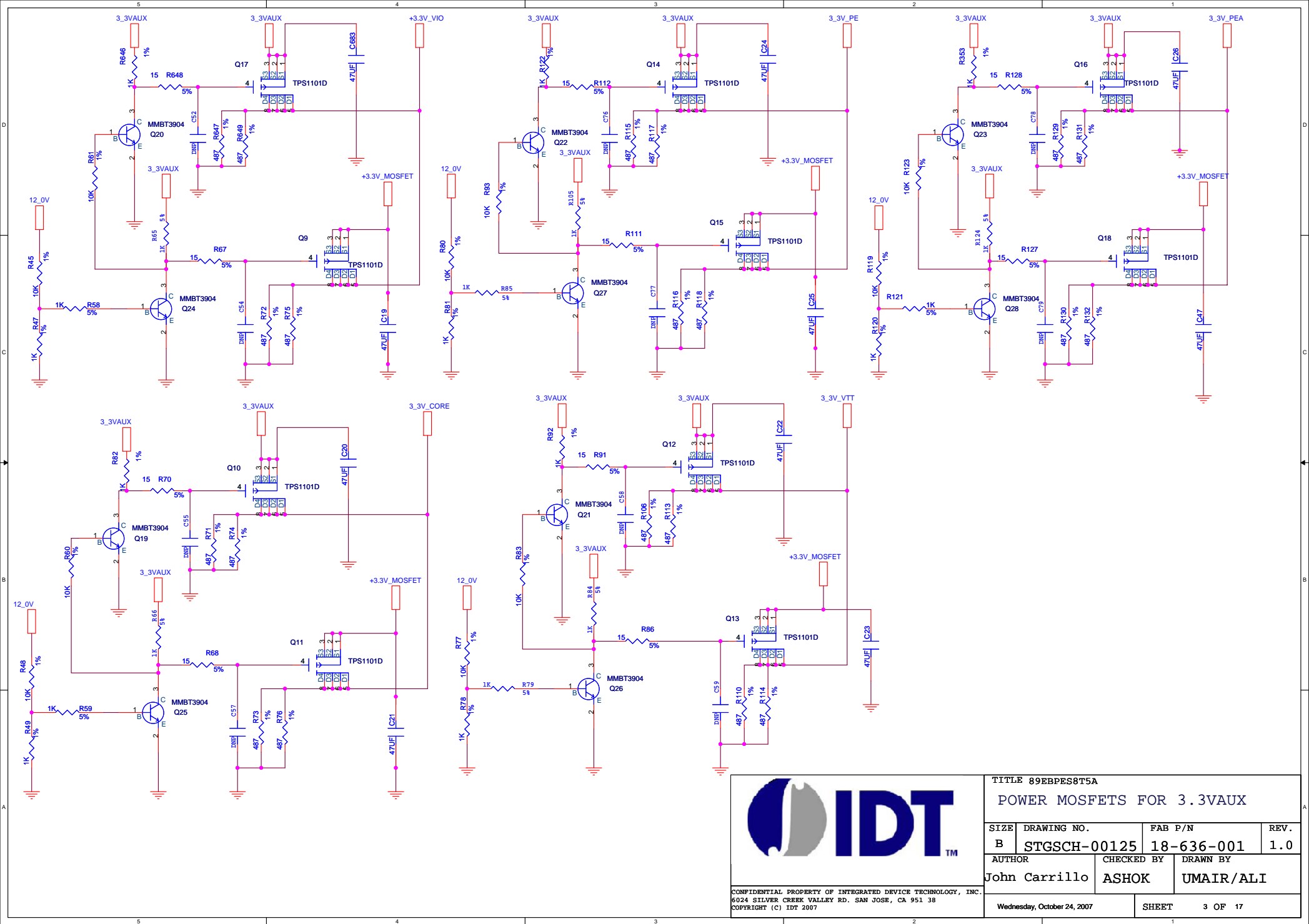
SHEET	DESCRIPTION
1	TABLE OF CONTENTS
2	POWER REGULATORS PES8T5A
3	POWER MOSFETS FOR 3.3VAUX
4	CLOCKS
5	RESET, SMBUS, JTAG, DIPSW
6	APWRDISN TIMING CIRCUIT
7	EPROM ATTN_SW WAKE
8	IO EXPANDERS
9	IO EXPANDER LEDS
10	HOT SWAP CONTROL PORT 2/4
11	HOT SWAP CONTROL PORT 3/5
12	PES8T5A - CLOCK, SMBUS, GPIO
13	PES8T5A - PORT 0
14	PES8T5A - DOWNSTREAM PORTS
15	DOWNSTREAM PORT 2/3 CONNECTORS
16	DOWNSTREAM PORT 4/5 CONNECTORS
17	PES8T5A - POWER

		<b>TITLE 89BPES8T5A</b> 89BPES8T5A EVALUATION BOARD			
		SIZE B	DRAWING NO. STGSCH-00125	FAB P/N 18-636-001	REV. 1.0
AUTHOR John Carrillo		CHECKED BY ASHOK	DRAWN BY UMAIR/ALI		
CONFIDENTIAL PROPERTY OF INTEGRATED DEVICE TECHNOLOGY, INC. 6024 SILVER CREEK VALLEY RD. SAN JOSE, CA 95138 COPYRIGHT (C) IDT 2007		Wednesday, October 24, 2007		SHEET 1 OF 17	

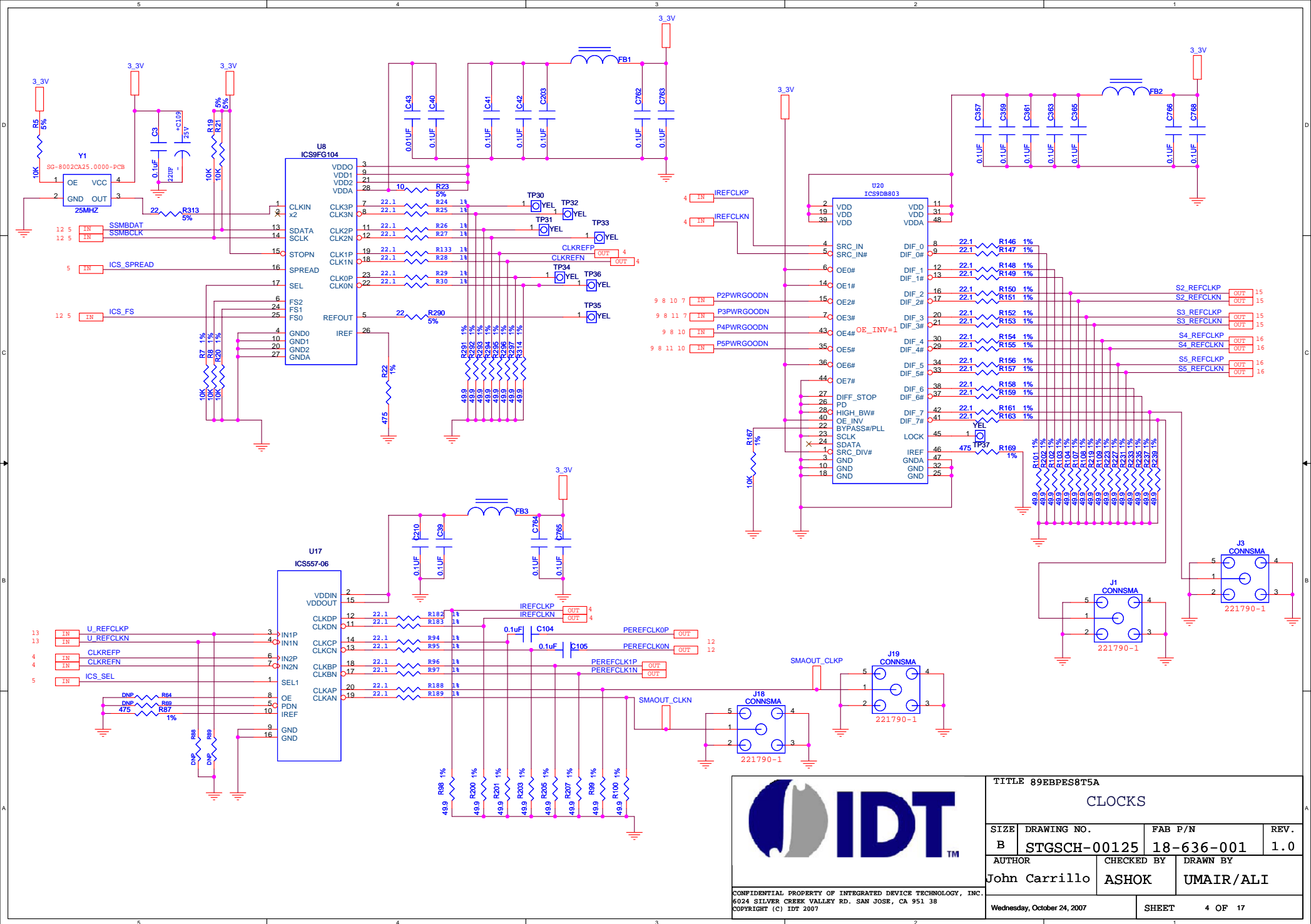



TITLE 89EBPES8T5A			
POWER REGULATORS 8T5A			
SIZE	DRAWING NO.	FAB P/N	REV.
B	STGSCH-00125	18-636-001	1.0
AUTHOR		CHECKED BY	DRAWN BY
John Carrillo		ASHOK	UMAIR/ALI
Wednesday, October 24, 2007			SHEET 2 OF 17

CONFIDENTIAL PROPERTY OF INTEGRATED DEVICE TECHNOLOGY, INC.  
 6024 SILVER CREEK VALLEY RD. SAN JOSE, CA 951 38  
 COPYRIGHT (C) IDT 2007



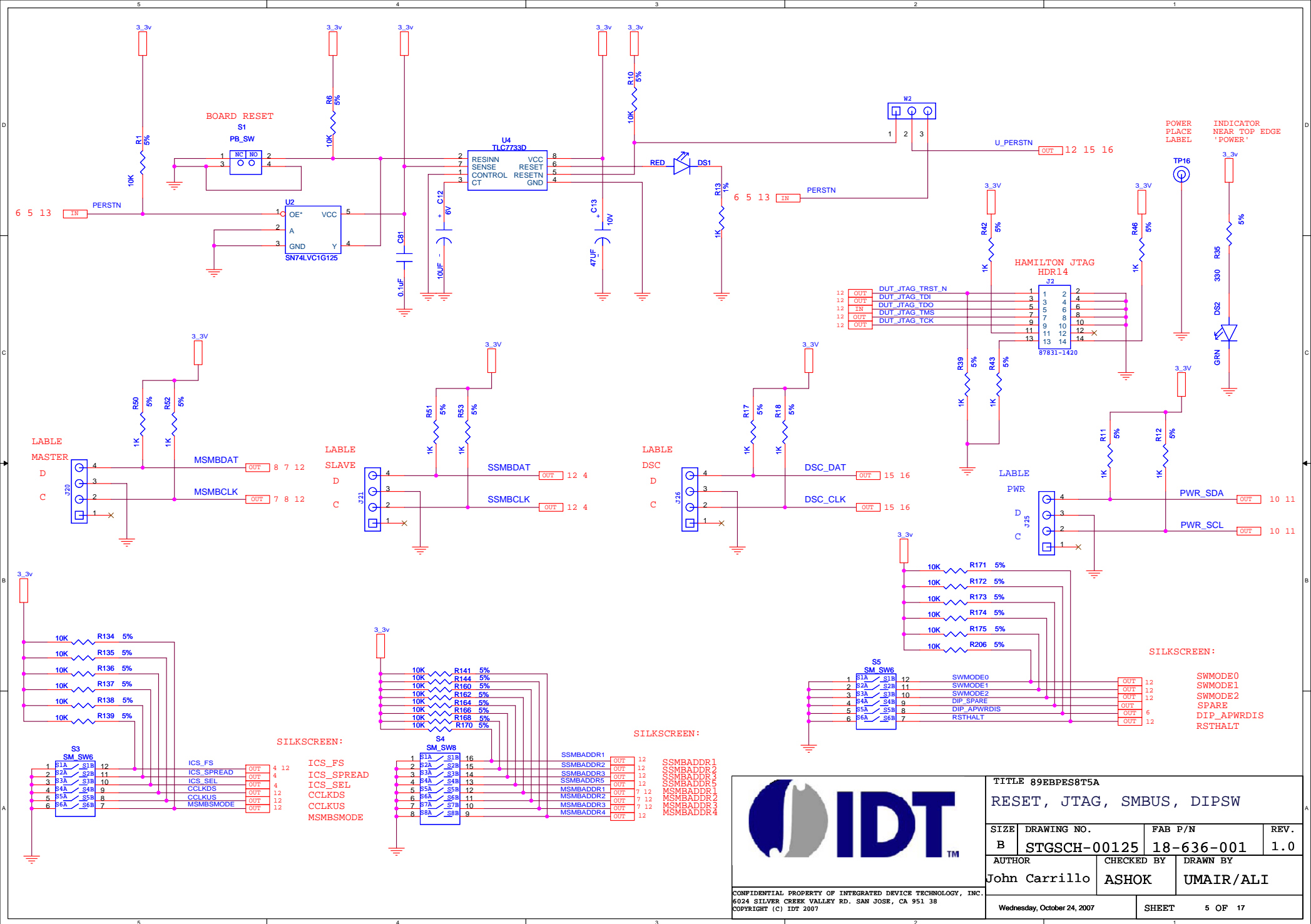
TITLE 89EBPES8T5A			
POWER MOSFETS FOR 3.3VAUX			
SIZE B	DRAWING NO. STGSCH-00125	FAB P/N 18-636-001	REV. 1.0
AUTHOR John Carrillo		CHECKED BY ASHOK	DRAWN BY UMAIR/ALI
Wednesday, October 24, 2007			SHEET 3 OF 17

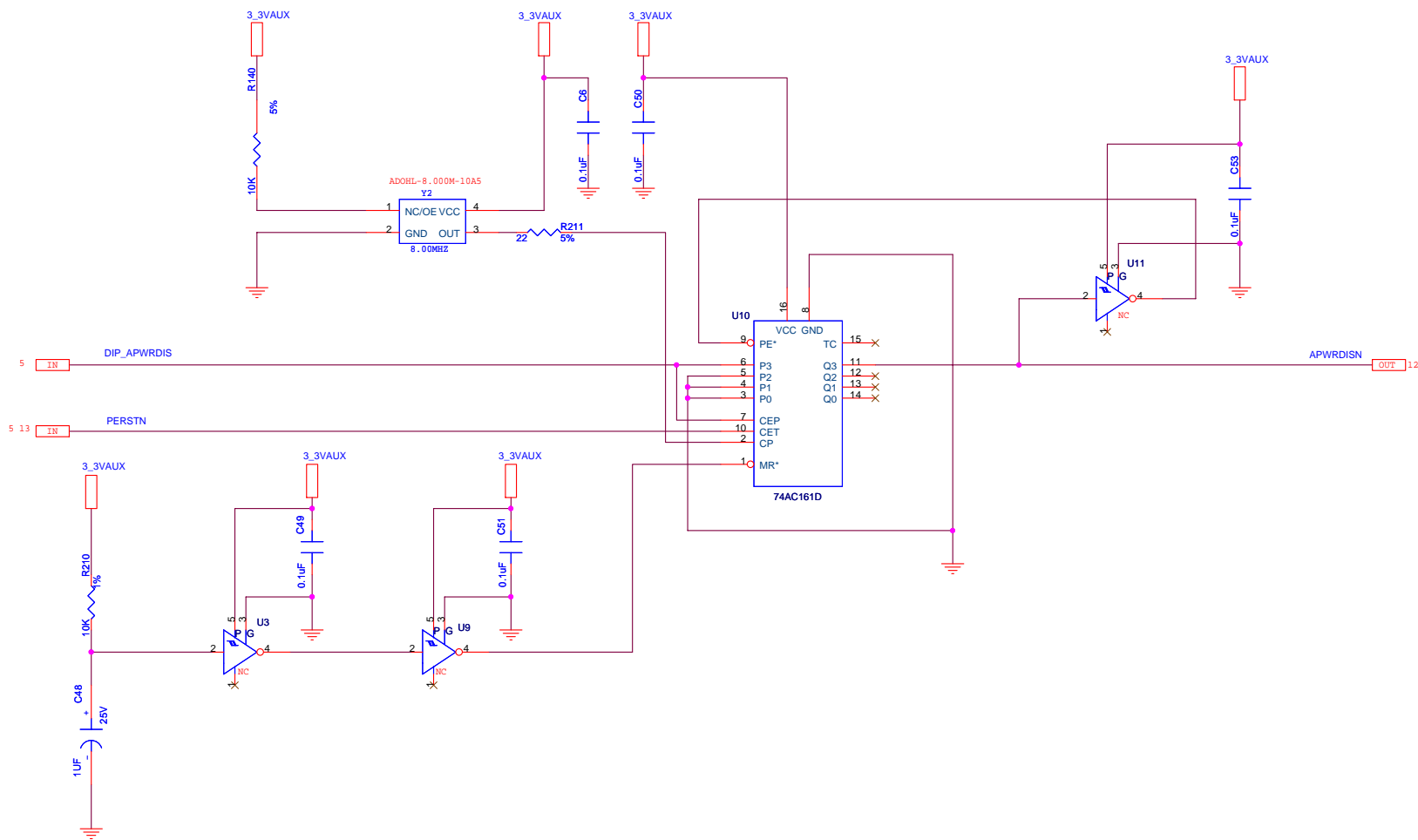




CONFIDENTIAL PROPERTY OF INTEGRATED DEVICE TECHNOLOGY, INC.  
6024 SILVER CREEK VALLEY RD. SAN JOSE, CA 95138  
COPYRIGHT (C) IDT 2007

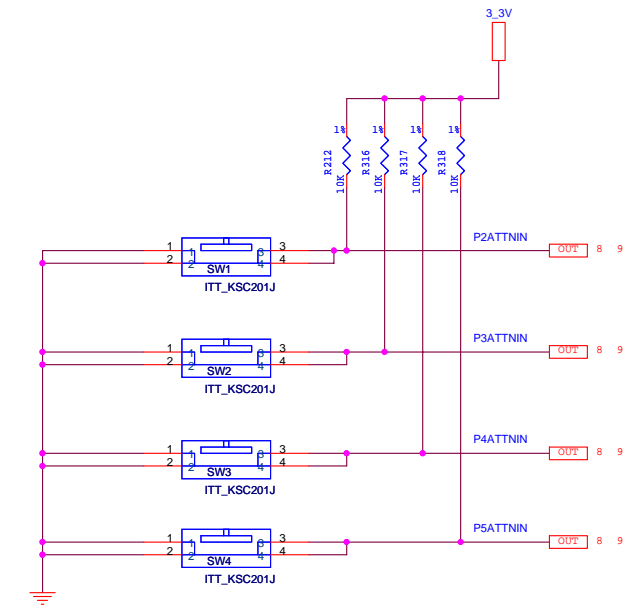
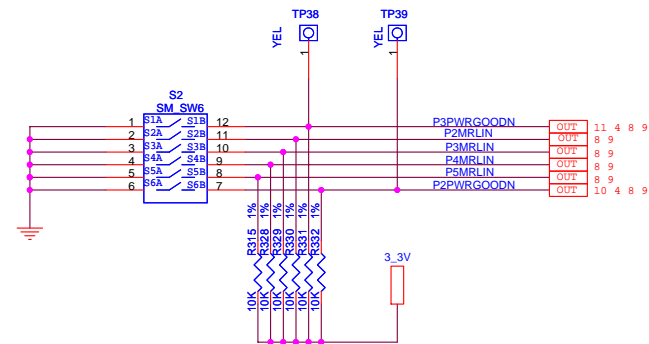
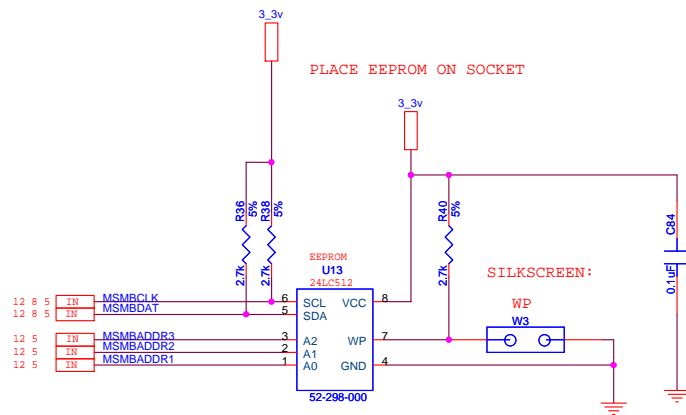
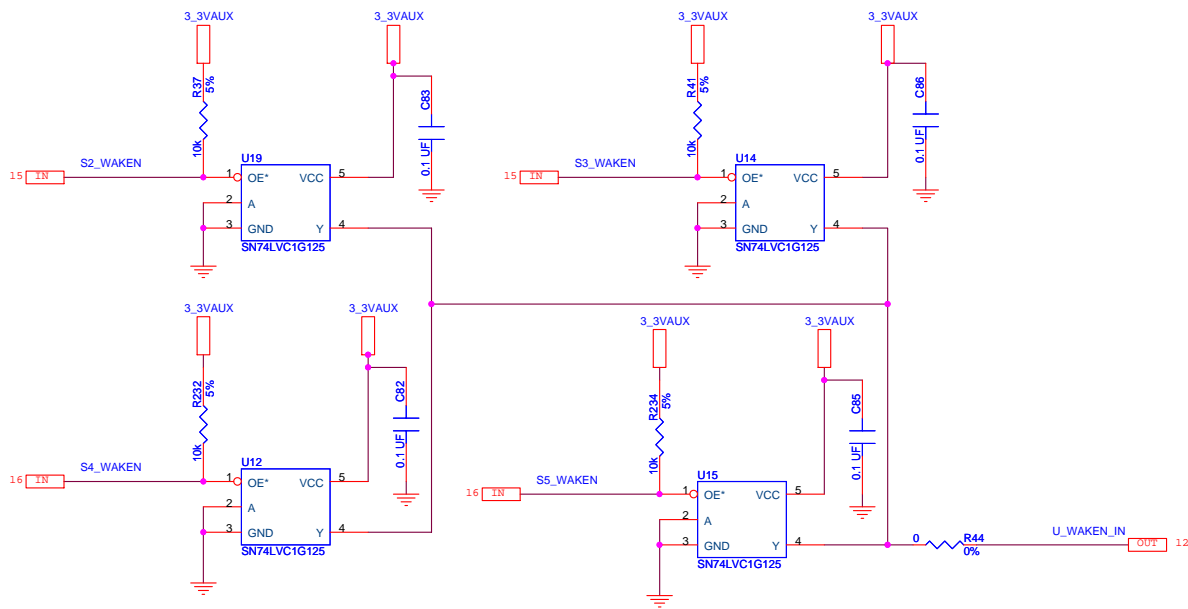
TITLE 89EBPES8T5A			
CLOCKS			
SIZE	DRAWING NO.	FAB P/N	REV.
B	STGSCH-00125	18-636-001	1.0
AUTHOR		CHECKED BY	DRAWN BY
John Carrillo		ASHOK	UMAIR/ALI
Wednesday, October 24, 2007			SHEET 4 OF 17





CONFIDENTIAL PROPERTY OF INTEGRATED DEVICE TECHNOLOGY, INC.  
 5024 SILVER CREEK VALLEY RD. SAN JOSE, CA 951 38  
 COPYRIGHT (C) IDT 2007

TITLE 89EBPES8T5A			
APWRDISN TIMING CIRCUIT			
SIZE	DRAWING NO.	FAB P/N	REV.
B	STGSCH-00125	18-636-001	1.0
AUTHOR		CHECKED BY	DRAWN BY
John Carrillo		ASHOK	UMAIR/ALI
Wednesday, October 24, 2007			SHEET 6 OF 17

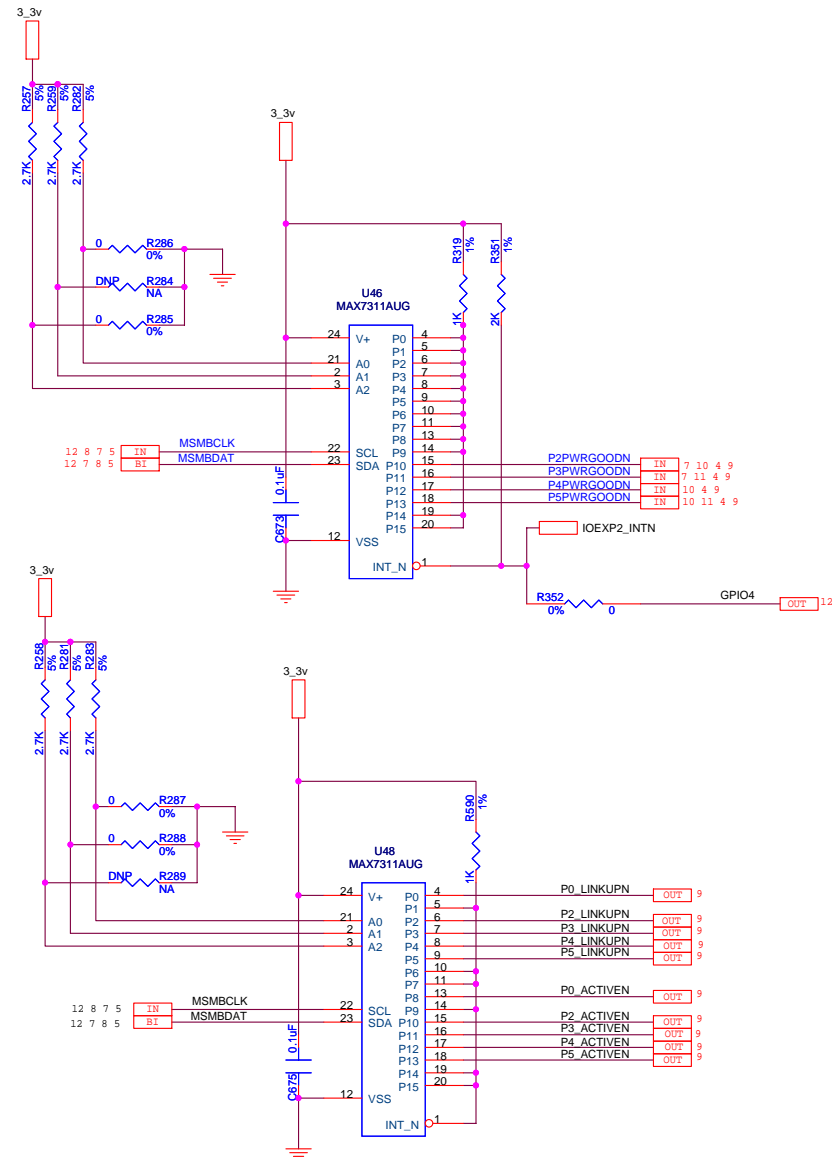
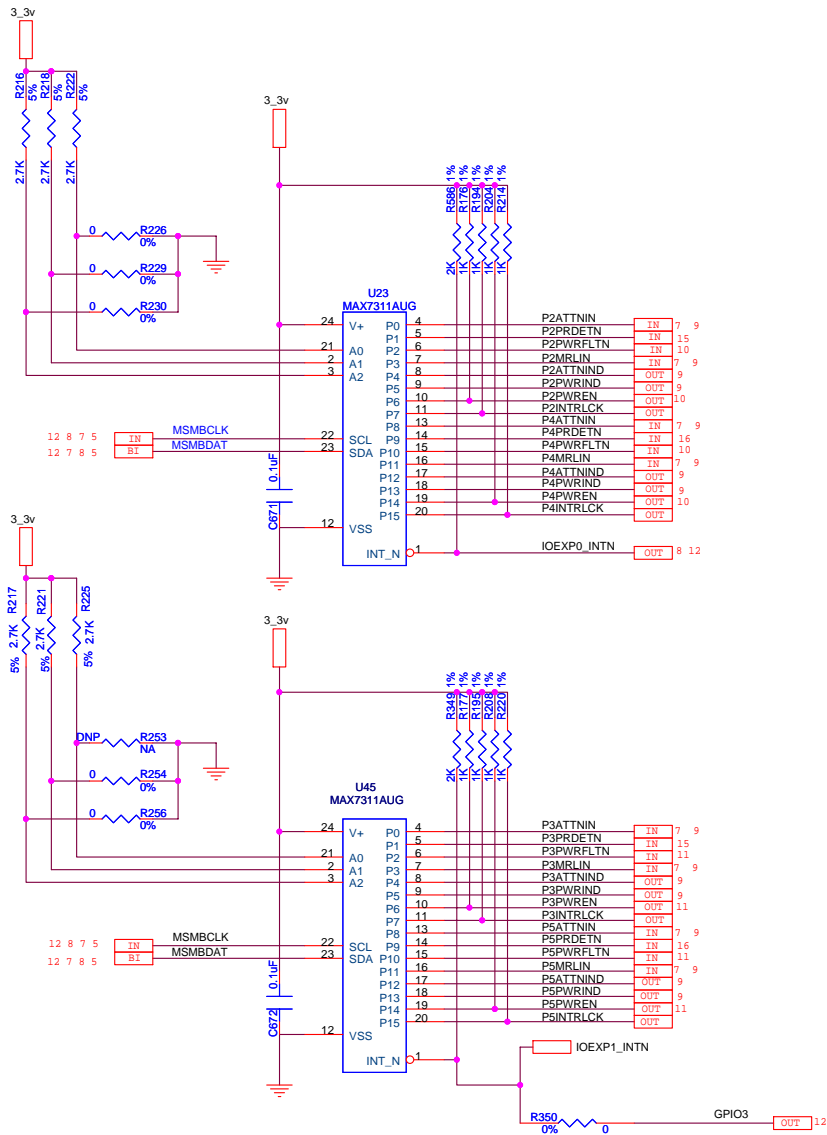


**TITLE** 89EBPES8T5A

**EEPROM ATTN\_SW WAKE MRL**

<b>SIZE</b>	<b>DRAWING NO.</b>	<b>FAB P/N</b>	<b>REV.</b>
B	STGSCH-00125	18-636-001	1.0
<b>AUTHOR</b>		<b>CHECKED BY</b>	<b>DRAWN BY</b>
John Carrillo		ASHOK	UMAIR/ALI
<b>Wednesday, October 24, 2007</b>			<b>SHEET 7 OF 17</b>

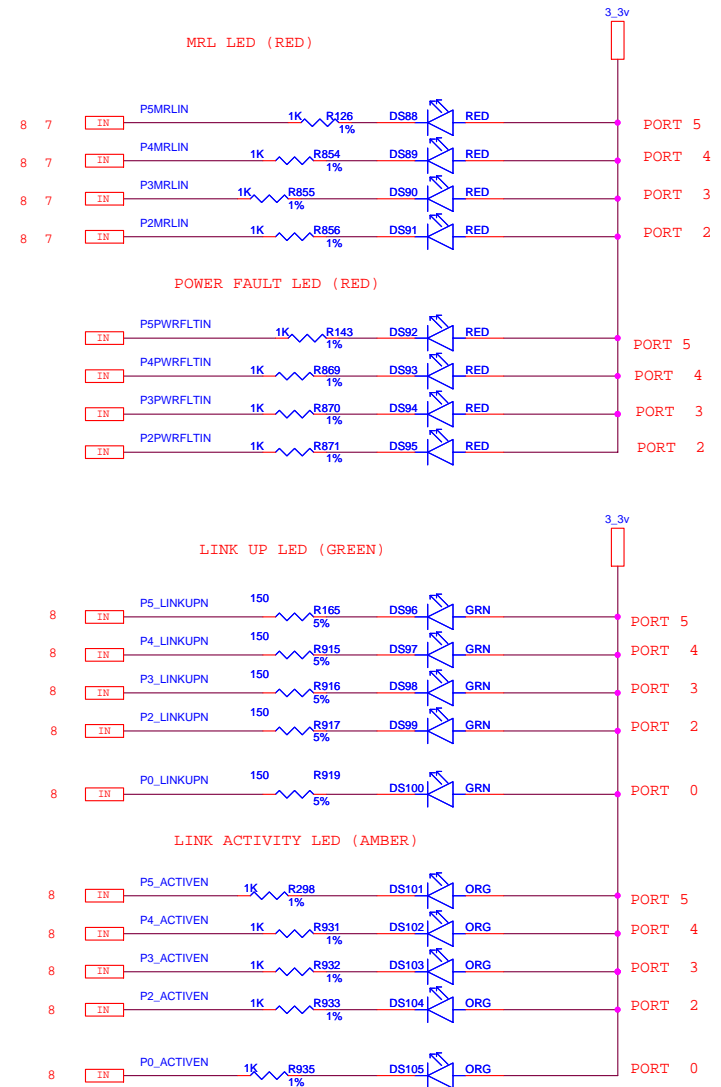
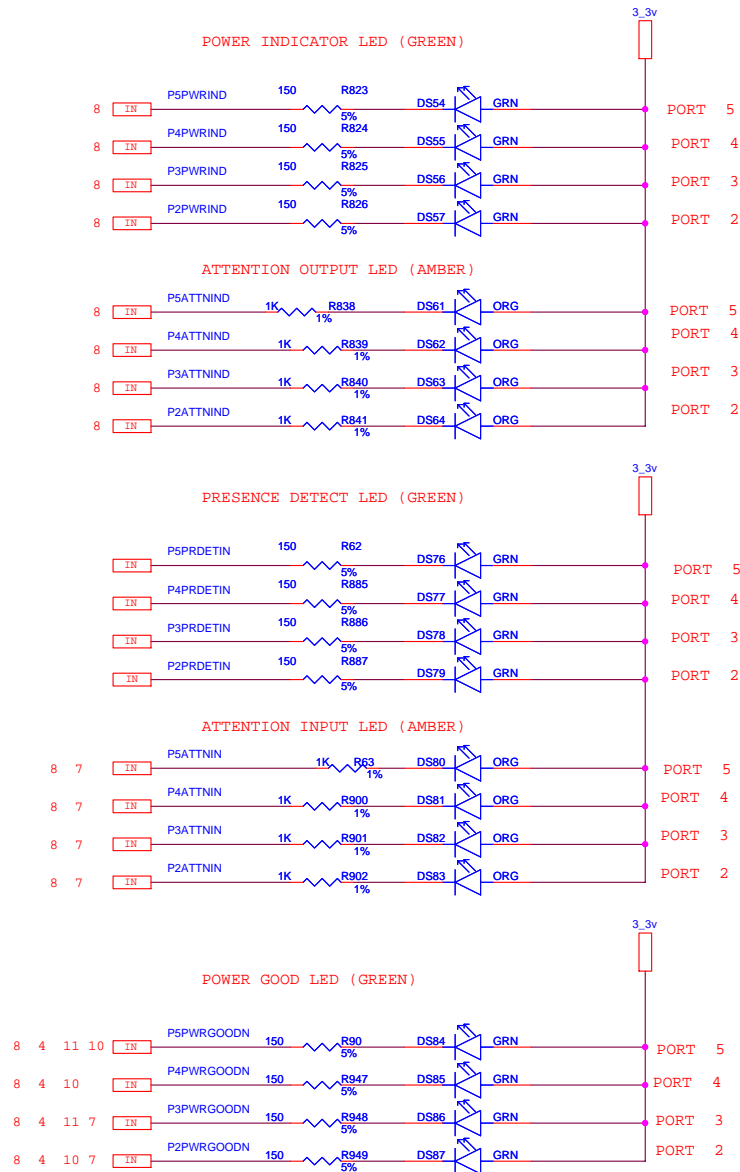
CONFIDENTIAL PROPERTY OF INTEGRATED DEVICE TECHNOLOGY, INC.  
 5024 SILVER CREEK VALLEY RD. SAN JOSE, CA 95138  
 COPYRIGHT (C) IDT 2007



CONFIDENTIAL PROPERTY OF INTEGRATED DEVICE TECHNOLOGY, INC.  
6024 SILVER CREEK VALLEY RD. SAN JOSE, CA 95138  
COPYRIGHT (C) IDT 2007

TITLE 89EBPES8T5A			
IO EXPANDERS			
SIZE	DRAWING NO.	FAB P/N	REV.
B	STGSCH-00125	18-636-001	1.0
AUTHOR		CHECKED BY	DRAWN BY
John Carrillo		ASHOK	UMAIR/ALI
Wednesday, October 24, 2007		SHEET 8 OF 17	

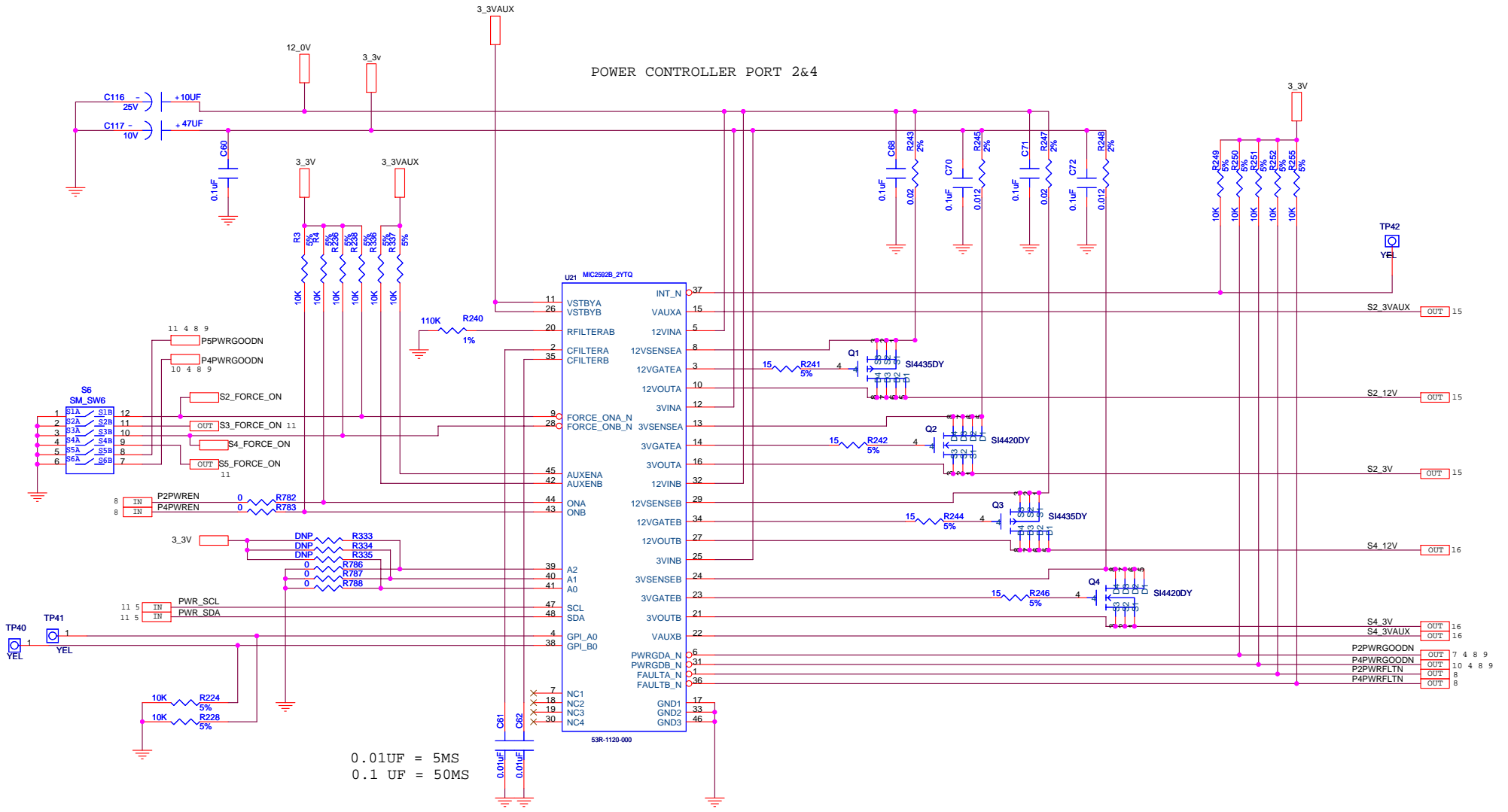




CONFIDENTIAL PROPERTY OF INTEGRATED DEVICE TECHNOLOGY, INC.  
6024 SILVER CREEK VALLEY RD. SAN JOSE, CA 951 38  
COPYRIGHT (C) IDT 2007

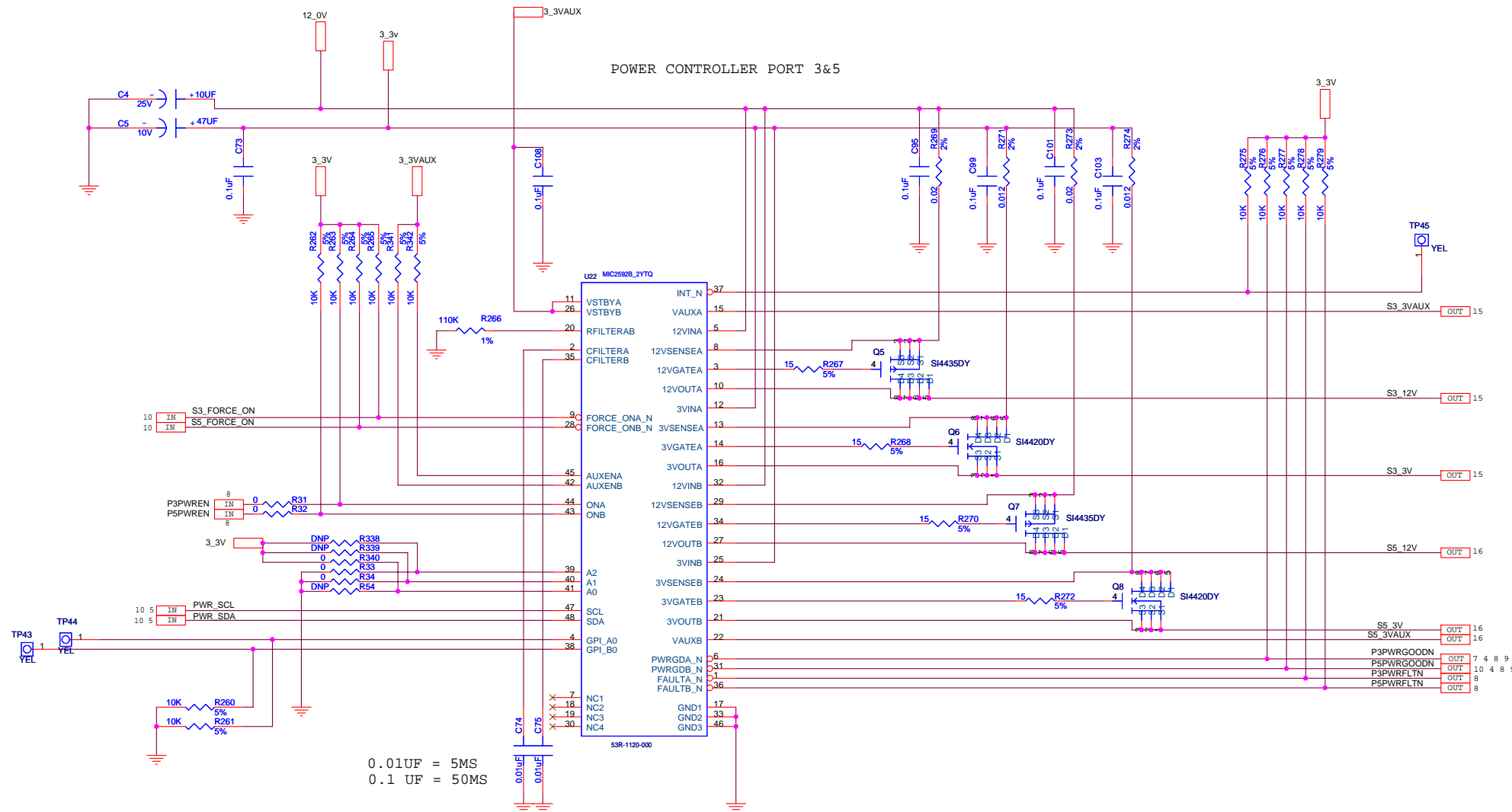
TITLE 89EBPES8T5A			
IO EXPANDER LEDS			
SIZE	DRAWING NO.	FAB P/N	REV.
B	STGSCH-00125	18-636-001	1.0
AUTHOR		CHECKED BY	DRAWN BY
John Carrillo		ASHOK	UMAIR/ALI
Wednesday, October 24, 2007			SHEET 9 OF 17

# POWER CONTROLLER PORT 2&4



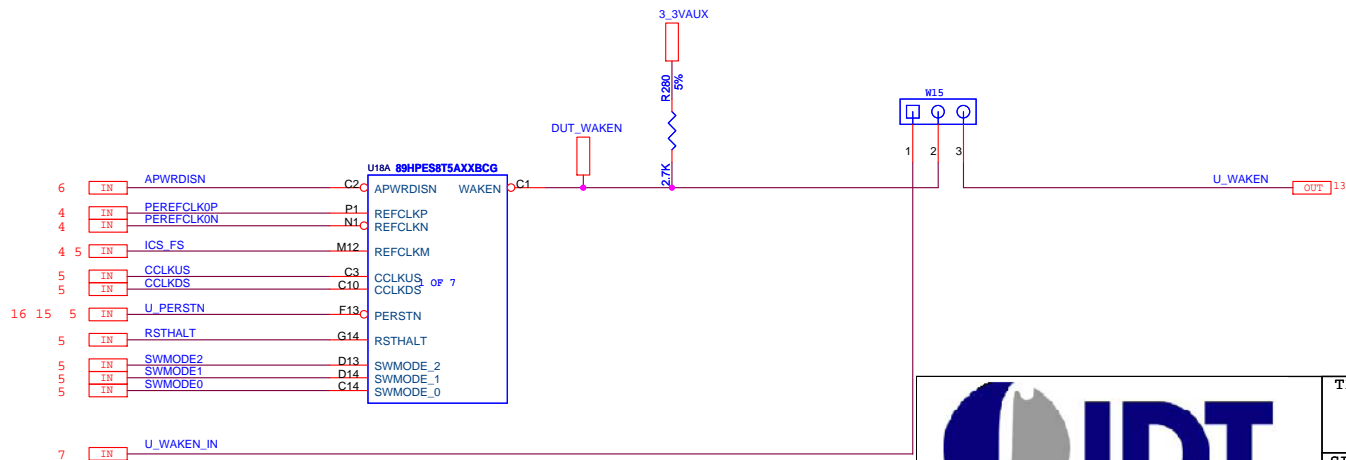
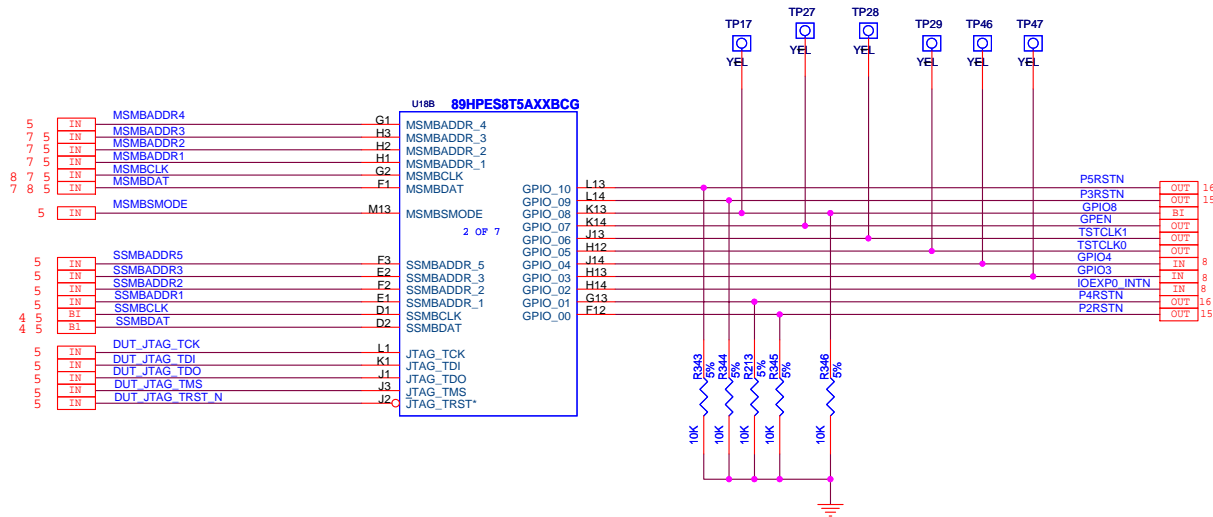
CONFIDENTIAL PROPERTY OF INTEGRATED DEVICE TECHNOLOGY, INC.  
6024 SILVER CREEK VALLEY RD. SAN JOSE, CA 951 38  
COPYRIGHT (C) IDT 2007

TITLE 89EBPES8T5A			
HOT SWAP CONTROL PORT 2/3			
SIZE B	DRAWING NO. STGSCH-00125	FAB P/N 18-636-001	REV. 1.0
AUTHOR John Carrillo		CHECKED BY ASHOK	DRAWN BY UMAIR/ALI
Wednesday, October 24, 2007		SHEET	10 OF 17



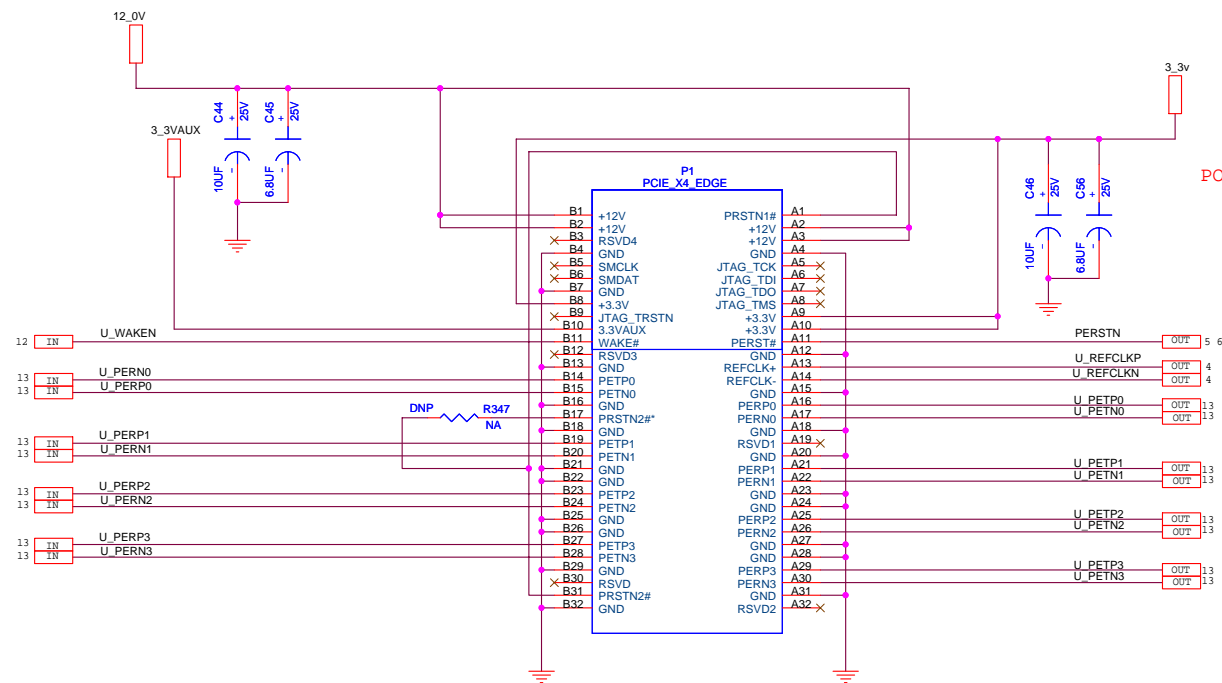
CONFIDENTIAL PROPERTY OF INTEGRATED DEVICE TECHNOLOGY, INC.  
6024 SILVER CREEK VALLEY RD. SAN JOSE, CA 951 38  
COPYRIGHT (C) IDT 2007

TITLE 89EBPES8T5A			
HOT SWAP CONTROL PORT 3/5			
SIZE	DRAWING NO.	FAB P/N	REV.
B	STGSCH-00125	18-636-001	1.0
AUTHOR		CHECKED BY	DRAWN BY
John Carrillo		ASHOK	UMAIR/ALI
Wednesday, October 24, 2007		SHEET	11 OF 17



CONFIDENTIAL PROPERTY OF INTEGRATED DEVICE TECHNOLOGY, INC.  
6024 SILVER CREEK VALLEY RD. SAN JOSE, CA 95138  
COPYRIGHT (C) IDT 2007

TITLE 89EBPES8T5A			
PES8T5A CLOCK, SMBUS, GPIO			
SIZE	DRAWING NO.	FAB P/N	REV.
B	STGSCH-00125	18-636-001	1.0
AUTHOR		CHECKED BY	DRAWN BY
John Carrillo		ASHOK	UMAIR/ALI
Wednesday, October 24, 2007		SHEET	12 OF 17



PORT 0 UPSTREAM EDGE CONNECTOR PROVIDES ALL POWER FOR BOARD

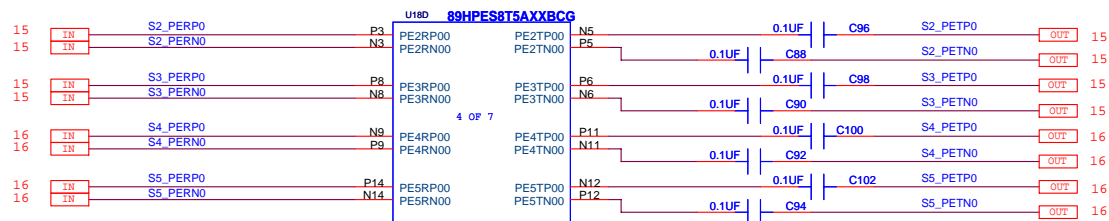
U18C 89HPES8T5A00XBCG											
13	IN	U_PERP0	A13	PE0RP00	PE0TP00	B11	C160	0.1UF	U_PETP0	OUT	13
13	IN	U_PERN0	B13	PE0RN00	PE0TN00	A11	C161	0.1UF	U_PETN0	OUT	13
13	IN	U_PERP1	B8	PE0RP01	PE0TP01	A10	C162	0.1UF	U_PETP1	OUT	13
13	IN	U_PERN1	A8	PE0RN01	PE0TN01	B10	C163	0.1UF	U_PETN1	OUT	13
13	IN	U_PERP2	B7	PE0RP02	PE0TP02	A5	C162	0.1UF	U_PETP2	OUT	13
13	IN	U_PERN2	A7	PE0RN02	PE0TN02	B5	C164	0.1UF	U_PETN2	OUT	13
13	IN	U_PERP3	A2	PE0RP03	PE0TP03	B4	C163	0.1UF	U_PETP3	OUT	13
13	IN	U_PERN3	B2	PE0RN03	PE0TN03	A4	C165	0.1UF	U_PETN3	OUT	13


TITLE 89BPES8T5A

PES8T5A PORT 0 EDGE CONN

SIZE	DRAWING NO.	FAB P/N	REV.
B	STGSCH-00125	18-636-001	1.0
AUTHOR		CHECKED BY	DRAWN BY
John Carrillo		ASHOK	UMAIR/ALI
Wednesday, October 24, 2007		SHEET 13 OF 17	

CONFIDENTIAL PROPERTY OF INTEGRATED DEVICE TECHNOLOGY, INC.  
 6024 SILVER CREEK VALLEY RD. SAN JOSE, CA 95138  
 COPYRIGHT (C) IDT 2007

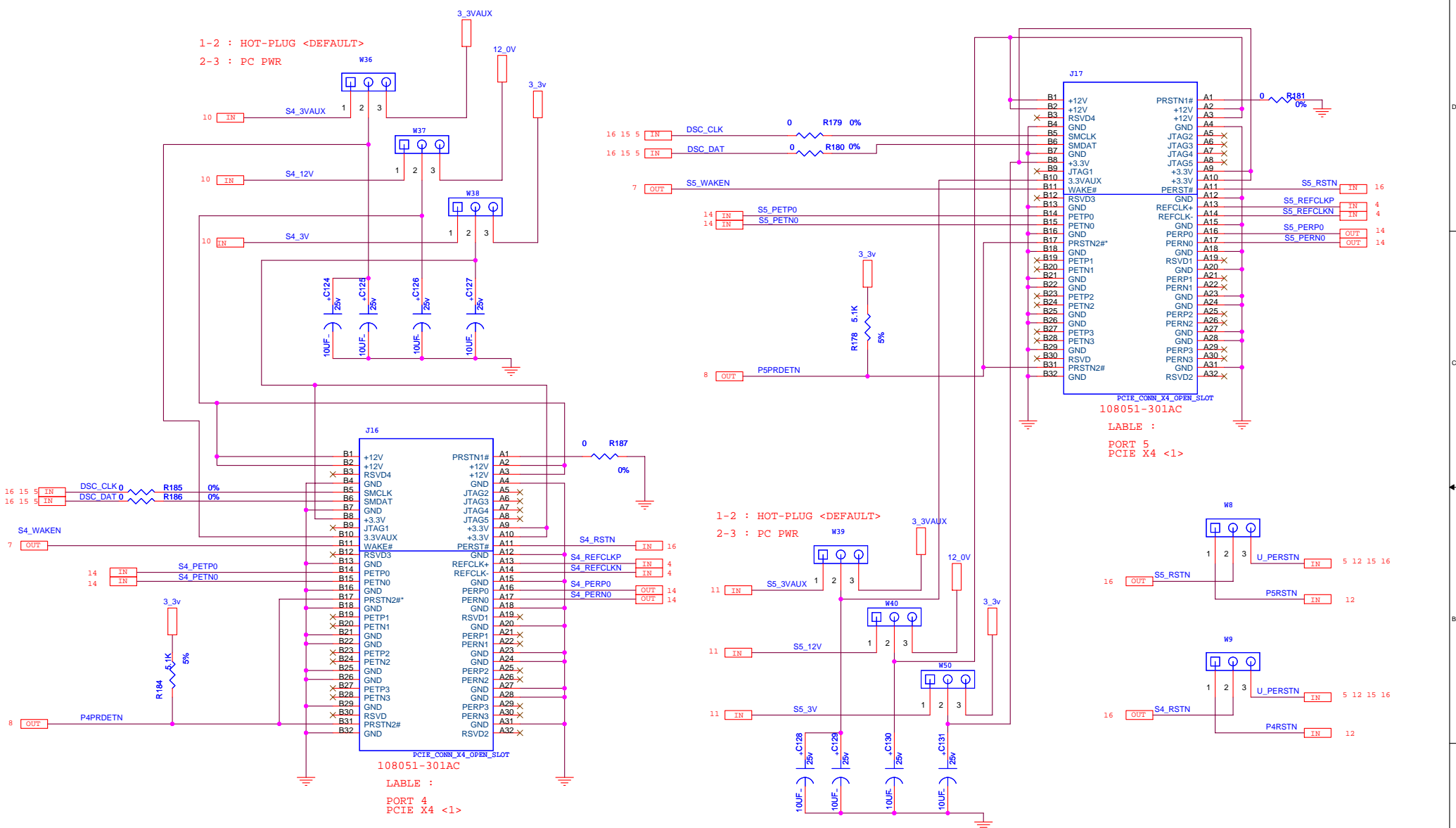





CONFIDENTIAL PROPERTY OF INTEGRATED DEVICE TECHNOLOGY, INC.  
6024 SILVER CREEK VALLEY RD. SAN JOSE, CA 951 38  
COPYRIGHT (C) IDT 2007

TITLE 89EBPES8T5A PES8T5A DOWNSTREAM PORTS			
SIZE B	DRAWING NO. STGSCH-00125	FAB P/N 18-636-001	REV. 1.0
AUTHOR John Carrillo		CHECKED BY ASHOK	DRAWN BY UMAIR/ALI
Wednesday, October 24, 2007		SHEET 14 OF 17	







CONFIDENTIAL PROPERTY OF INTEGRATED DEVICE TECHNOLOGY, INC.  
6024 SILVER CREEK VALLEY RD. SAN JOSE, CA 95138  
COPYRIGHT (C) IDT 2007

TITLE 89EBPES8T5A

PORT 4 AND PORT 5

SIZE	DRAWING NO.	FAB P/N	REV.
B	STGSCH-00125	18-636-001	1.0
AUTHOR		CHECKED BY	DRAWN BY
John Carrillo		ASHOK	UMAIR/ALI
Wednesday, October 24, 2007		SHEET 16 OF 17	



