

Innovative environmental mobile sensing solutions based on advanced sensor technologies

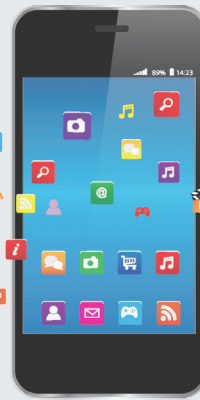


Barometric Pressure Sensor

High precision sensor for use in indoor navigation and fitness applications (e.g., stair counting)

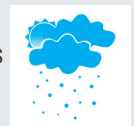
Gas (available soon)

VOC, ethanol, CO measurement for multiple mobile applications including personal safety



Humidity

High-precision humidity sensors



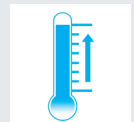
Optical Sensor

- ALS+Proximity / RGB+Proximity sensor for display control
- RGB sensor improves camera flash and picture quality
- UV sensor for personal protection

Thermopile

(Non-contact Temperature Sensor)

- Human body temperature
- Object temperature



Optical Sensor

Our accurate UV + ALS sensor calculates the UV-index anywhere in the world and is capable of communicating to the user their recommended limit of sun exposure

Thermopile

Thermopile sensors measure the temperature of an object without requiring direct contact

Designing sensor systems can be quite challenging and time consuming, and producing them in volume is often expensive due to long test cycles on costly production test equipment. IDT is pleased to add a range of new sensors and sensor signal conditioning products to its portfolio following the recent acquisition of ZMDI. SSC ICs facilitate both design and production of sensor interfaces by providing programmable, highly accurate, wide gain and quantization functions combined with powerful, high-order digital correction and linearization algorithms.

KEY FEATURES

- Innovative technologies for environmental sensors in consumer applications
- Best-in-class power consumption, accuracy, and resolution
- Small package size and flexible delivery forms
- Reduces real estate on the board by minimizing the number of external components

APPLICATIONS

- Altimeter/barometric
- Proximity sensing
- Ambient light/color sensing
- Temperature sensing
- Vital parameter sensing
- Humidity sensing

IDT Sensor Signal Conditioner ICs are all-in-one, energy-efficient products that are easy to use and are supported by advanced software and expert technical support staff with extensive sensor system design experience. A distinct advantage of our correction algorithms is that they are calibrated and programmed in an efficient “single-pass” operation that lowers costs by reducing test time and loading of production test equipment without sacrificing precision. Sensor Signal Conditioner ICs also lower total system costs by simplifying sensor design with our excellent support tools, reducing external components, minimizing board space, and providing a faster migration to production.

Sensor Signal Conditioning ICs from IDT enable you to get it right – on the first pass!

Did you know that sensors and sensor signal conditioner ICs...

- Provide a wide range of applications including the mobile, automotive and industrial sectors
- Have a proven track record and long history of serving the automotive market
- Mobile sensing products have been and are being integrated into new smart phone and tablet design

To request samples, download documentation, or learn more, visit: idt.com/go/zmdi

Global Strength, Local Focus

IDT is headquartered in Silicon Valley – the heart and soul of technical innovation. Our global locations place design and sales support wherever our customers happen to be, whether in the Americas, Europe or Asia.

