

RZ Ecosystem Partner Solution

FPT NextEye – Security, Analysis Solution



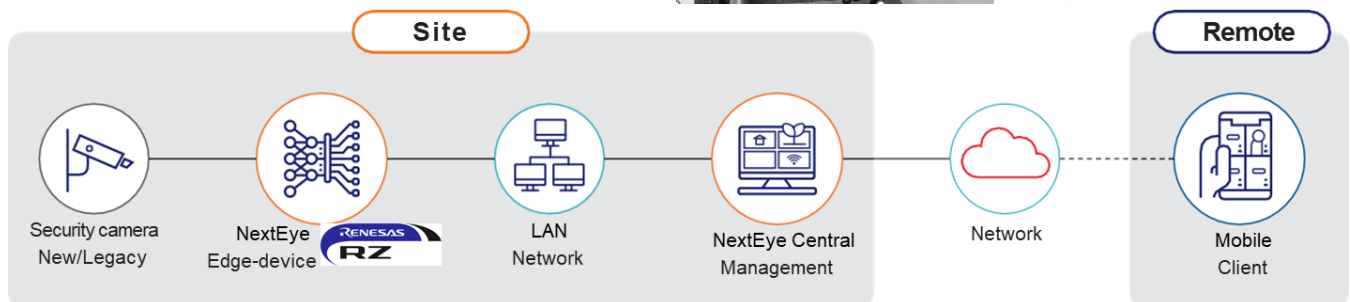
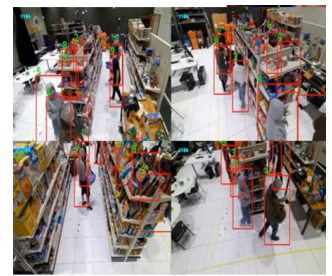
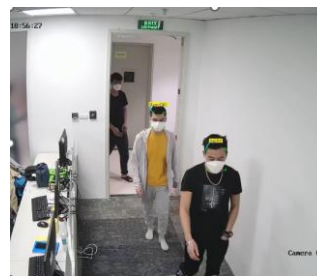
Solution Summary

Powered by AI technology, NextEye is an advanced analysis solution that turns your video system from a passive recorder to an active guardian, and is capable to monitor and analyze people, objects, activities in stores, offices and factories, allowing operators to focus on the most important events, capturing valuation evidence and accelerate response time. Low power efficiency and real-time processing are made possible by using [RZ/V series](#).

Features/Benefits

- Face recognition
 - Face identification with mask
 - Large scale face search
- Safety and security management
 - Access control
 - Personal protective equipment compliance monitoring
 - Intrusion, crowd detection
 - Detection of goods removal from controlled area
- Traffic insights analysis (promotion, marketing campaign, performance analysis)
 - Head counting and heatmap
 - Demographic identification
 - Report & dashboard via Web portal
 - Data cloud recording
- Customer journey/customer service analysis
 - Customer integration rate
 - Dwell time and check out time measurement

Diagrams/Graphics



Target Markets and Applications

- Offices, factories, workplaces: access control, safety and security management
- Retail stores, shopping malls, supermarkets: store planogram compliance monitoring, traffic and customer journey analysis

Advantages

| | |
|--|--|
| <p>High reliability Combination of computer vision and deep learning enables the speedy and excellent analysis results</p> | <p>Effortless integration Easy set-up and effortless integration with existing CCTV system provides high cost-performance for the total solution</p> |
| <p>Rapid adaptability Trainable algorithm allows customers to create or change specific rules quickly with minimum interruption</p> | <p>Enhanced security & compliance Cloud/on-promises implementation ensures the data security and compliance based on customer's various needs</p> |

Reasons to Use

*FRVT: Face Recognition Vendor Test
*NIST: National Institute of Standards and Technology (America)



High precision

Precise face recognition facilitated by the TOP 6 facial recognition engine benchmarked by FRVT of NIST(2020)



Advanced compatibility

Able to combine with existing security cameras, compatible with most of IP commercial ones to meet the budget level of investment



Flexible deployment

AI software package can be easily customized and deployed on both edge devices, on-promises or on cloud

Company information

| | |
|--------------|--|
| URL | https://www.fpt-software.jp/ |
| Company name | FPT Software Company Limited (subsidiary of FPT Corporation) |
| Employee | More than 22,000 people |
| Headquarters | Hanoi, Vietnam |
| Location | 26 countries and regions |
| Services | Business application services, DX services, cloud professional services, data analysis, IoT, mobility, embedded systems, CAD / CAE, IC design, BPO, AI solutions |
| URL | https://www.fpt-software.jp/company-information/fpt-japan/ |
| Company name | FPT Japan Holdings Co., Ltd. (subsidiary of FPT Software) |
| Employee | More than 1,750 people |
| Headquarters | 6F - KDX Hamamatsucho Place, 1-7-6 Shibakoen, Minato-ku, Tokyo 105-0011 |
| Location | 8 locations in Japan |
| Contact | Tel: +81-3-6634-6868 Email: Fjp.contact@fsoft.com.vn |