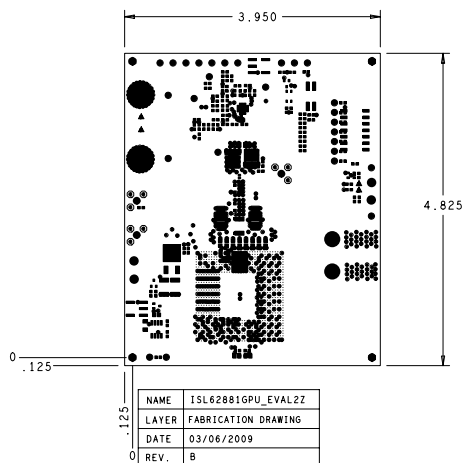


NOTES: UNLESS OTHERWISE SPECIFIED:

- 1 THIS IS A 8 LAYER BOARD WITH COMPONENTS ON BOTH SIDES.
- 2 RINTED CIRCUIT BOARD SHALL BE 1 OUNCE COPPER
- 3 SMT LAND PATTERNS THAT HAVE A FINISHED PAD WIDTH RANGING FROM .012 TO .015 MUST USE THE FOLLOWING TOLERANCE,  $\pm .002$ -.0005.  
PB VENDOR TO ADJUST ARTWORK TO COMPENSATE FOR ETCH PROCESS.
- 4 MANUFACTURE/FABRICATE TO MEET EU RoHS DIRECTIVE.  
ALL MATERIALS AND SOLDERMASK TO BE COMPLIANT TO EU RoHS DIRECTIVE 20002/95/EC  
LAMINATE AND RESIN MATERIAL PARAMETERS  
 $T_g > 170\text{ C}$   
 $T_d > 294\text{ C}$
- 5 SILKSCREEN BOTH SIDES WITH WHITE NON CONDUCTIVE EPOXY BASED INK
- 6 IMMERSION GOLD FINISH
- 7 MINIMUM SPACE .005"/TRACE .008"
- 8 ALL VIAS ARE TINTED
- 8 BLUE SOLDER MASK



DRILL CHART: TOP to BOTTOM			
ALL UNITS ARE IN MILS			
FIGURE	SIZE	PLATED	QTY
•	8.0	PLATED	669
⊙	37.0	PLATED	9
⊙	40.0	PLATED	27
▲	41.0	PLATED	4
◇	93.0	PLATED	3
⊙	100.0	PLATED	4
⊙	155.0	PLATED	2
⊙	200.0	PLATED	2
⊙	128.0	NON-PLATED	4

Drawn By: MARGARET SAVIEO 919 405-3625	Date Drawn: 03-06-09	Engineer: JIA WEI
Released By:	Date Released:	ISL62881GPU_EVAL2Z
Updated By:	Date Updated:	
FILENAME: ISL62881GPU_EVAL2ZREV B	SHEET 1 of 1	REV. B