

To our customers,

Old Company Name in Catalogs and Other Documents

On April 1st, 2010, NEC Electronics Corporation merged with Renesas Technology Corporation, and Renesas Electronics Corporation took over all the business of both companies. Therefore, although the old company name remains in this document, it is a valid Renesas Electronics document. We appreciate your understanding.

Renesas Electronics website: <http://www.renesas.com>

April 1st, 2010
Renesas Electronics Corporation

Issued by: Renesas Electronics Corporation (<http://www.renesas.com>)

Send any inquiries to <http://www.renesas.com/inquiry>.

Notice

1. All information included in this document is current as of the date this document is issued. Such information, however, is subject to change without any prior notice. Before purchasing or using any Renesas Electronics products listed herein, please confirm the latest product information with a Renesas Electronics sales office. Also, please pay regular and careful attention to additional and different information to be disclosed by Renesas Electronics such as that disclosed through our website.
2. Renesas Electronics does not assume any liability for infringement of patents, copyrights, or other intellectual property rights of third parties by or arising from the use of Renesas Electronics products or technical information described in this document. No license, express, implied or otherwise, is granted hereby under any patents, copyrights or other intellectual property rights of Renesas Electronics or others.
3. You should not alter, modify, copy, or otherwise misappropriate any Renesas Electronics product, whether in whole or in part.
4. Descriptions of circuits, software and other related information in this document are provided only to illustrate the operation of semiconductor products and application examples. You are fully responsible for the incorporation of these circuits, software, and information in the design of your equipment. Renesas Electronics assumes no responsibility for any losses incurred by you or third parties arising from the use of these circuits, software, or information.
5. When exporting the products or technology described in this document, you should comply with the applicable export control laws and regulations and follow the procedures required by such laws and regulations. You should not use Renesas Electronics products or the technology described in this document for any purpose relating to military applications or use by the military, including but not limited to the development of weapons of mass destruction. Renesas Electronics products and technology may not be used for or incorporated into any products or systems whose manufacture, use, or sale is prohibited under any applicable domestic or foreign laws or regulations.
6. Renesas Electronics has used reasonable care in preparing the information included in this document, but Renesas Electronics does not warrant that such information is error free. Renesas Electronics assumes no liability whatsoever for any damages incurred by you resulting from errors in or omissions from the information included herein.
7. Renesas Electronics products are classified according to the following three quality grades: “Standard”, “High Quality”, and “Specific”. The recommended applications for each Renesas Electronics product depends on the product’s quality grade, as indicated below. You must check the quality grade of each Renesas Electronics product before using it in a particular application. You may not use any Renesas Electronics product for any application categorized as “Specific” without the prior written consent of Renesas Electronics. Further, you may not use any Renesas Electronics product for any application for which it is not intended without the prior written consent of Renesas Electronics. Renesas Electronics shall not be in any way liable for any damages or losses incurred by you or third parties arising from the use of any Renesas Electronics product for an application categorized as “Specific” or for which the product is not intended where you have failed to obtain the prior written consent of Renesas Electronics. The quality grade of each Renesas Electronics product is “Standard” unless otherwise expressly specified in a Renesas Electronics data sheets or data books, etc.
 - “Standard”: Computers; office equipment; communications equipment; test and measurement equipment; audio and visual equipment; home electronic appliances; machine tools; personal electronic equipment; and industrial robots.
 - “High Quality”: Transportation equipment (automobiles, trains, ships, etc.); traffic control systems; anti-disaster systems; anti-crime systems; safety equipment; and medical equipment not specifically designed for life support.
 - “Specific”: Aircraft; aerospace equipment; submersible repeaters; nuclear reactor control systems; medical equipment or systems for life support (e.g. artificial life support devices or systems), surgical implantations, or healthcare intervention (e.g. excision, etc.), and any other applications or purposes that pose a direct threat to human life.
8. You should use the Renesas Electronics products described in this document within the range specified by Renesas Electronics, especially with respect to the maximum rating, operating supply voltage range, movement power voltage range, heat radiation characteristics, installation and other product characteristics. Renesas Electronics shall have no liability for malfunctions or damages arising out of the use of Renesas Electronics products beyond such specified ranges.
9. Although Renesas Electronics endeavors to improve the quality and reliability of its products, semiconductor products have specific characteristics such as the occurrence of failure at a certain rate and malfunctions under certain use conditions. Further, Renesas Electronics products are not subject to radiation resistance design. Please be sure to implement safety measures to guard them against the possibility of physical injury, and injury or damage caused by fire in the event of the failure of a Renesas Electronics product, such as safety design for hardware and software including but not limited to redundancy, fire control and malfunction prevention, appropriate treatment for aging degradation or any other appropriate measures. Because the evaluation of microcomputer software alone is very difficult, please evaluate the safety of the final products or system manufactured by you.
10. Please contact a Renesas Electronics sales office for details as to environmental matters such as the environmental compatibility of each Renesas Electronics product. Please use Renesas Electronics products in compliance with all applicable laws and regulations that regulate the inclusion or use of controlled substances, including without limitation, the EU RoHS Directive. Renesas Electronics assumes no liability for damages or losses occurring as a result of your noncompliance with applicable laws and regulations.
11. This document may not be reproduced or duplicated, in any form, in whole or in part, without prior written consent of Renesas Electronics.
12. Please contact a Renesas Electronics sales office if you have any questions regarding the information contained in this document or Renesas Electronics products, or if you have any other inquiries.

(Note 1) “Renesas Electronics” as used in this document means Renesas Electronics Corporation and also includes its majority-owned subsidiaries.

(Note 2) “Renesas Electronics product(s)” means any product developed or manufactured by or for Renesas Electronics.

H8/300H Tiny Series Compact Emulator

Operating Back Trace ([Trace] Window)

Overview

The R0E436640CPE00 compact full-specification emulator for the H8/300H Tiny series incorporates a realtime tracing function which records the history of execution of the target program. The [Trace] window is used to display the results of realtime trace measurement. This document describes how to refer to the paths of execution of the source program in the source-mode display format in the [Trace] window.

Operation as described in this document can be confirmed on the H8/300H Tiny series compact emulator as a stand-alone unit. The same functions are usable with all compact emulators for the H8/300H Tiny series.

Contents

1. Specifications	2
2. Functional Description.....	2
3. Preparing the Software	2
3.1 Introduction.....	2
3.2 Installing the H8/300H Tiny Series Compact Emulator Software	2
3.3 Installing Other Necessary Software.....	2
4. Operations.....	3
4.1 Activating the High-Performance Embedded Workshop.....	3
4.2 Opening a Workspace.....	4
4.3 Customizing a Source File	9
4.4 Build Operations.....	10
4.5 Step Operations in the [Trace] Window	12
5. Related Documents.....	26

1. Specifications

The realtime tracing function that is incorporated in H8/300H Tiny series compact emulators enables recording of up to 64 k cycles of the history of execution of the target program. When the results of realtime trace measurement are displayed in the source-mode display format within the [Trace] window, the mouse can be used to move a pointer to the source program in single steps along the program's path of execution. As well as single-step execution, operation of the [Come] button, which brings execution to the current cursor position, is available as a kind of step operation. Forward and backward (tracing back) are specifiable as directions for step operation.

2. Functional Description

This document describes how to use the H8/300H Tiny series compact emulator to refer to the path of execution of a source program in the [Trace] window. It guides you through a sample program provided on the CD-ROM for the H8/300H Tiny series compact emulator.

Versions of the individual tools are as follows.

Integrated Development Environment

High-performance Embedded Workshop Version 4.02.00

Compiler Package

H8SX, H8S, H8 compiler package Version 6.01, Release 02

Emulator Software

H8/300H Tiny compact emulator debugger Version 1.01, Release 00

3. Preparing the Software

3.1 Introduction

On your personal computer, install the software provided on the CD-ROM for the H8/300H Tiny series compact emulator. This will also deploy the sample program (tutorial workspace) to be used in this document.

The software on the CD-ROM can also be installed on a personal computer in which the High-performance Embedded Workshop has already been installed. In this case, some dialog boxes may be skipped in the installation process.

3.2 Installing the H8/300H Tiny Series Compact Emulator Software

Execute setup.exe from the CD-ROM for the H8/300H Tiny series compact emulator.

For details on installation, refer to the setup guide for the H8/300H Tiny series compact emulator and follow the instructions on the screen during installation. The installation procedure is omitted here.

3.3 Installing Other Necessary Software

- (1) The installation procedure is described in the manual supplied with the optional product; it is not described in this document.
- (2) This document describes the checking of operations when a part of the sample program is changed. The H8S, H8/300 series C/C++ compiler package is used for this purpose. Install the product version of the compiler package if you have already purchased it.

(3) If you have not purchased the product version of the compiler package, download the evaluation version from the Renesas website. The evaluation version of the H8S, H8/300 series C/C++ compiler package can be found from the top page by selecting [Support], [Download], [Download Search], and [Select Category], in that order, then selecting [Evaluation Version]. Links to the Renesas website are given in the last section of this document. Notes on restrictions and instructions for installing the evaluation version are available on the download page.

4. Operations

This section describes how to activate the High-performance Embedded Workshop (HEW) and how to use the step-operation function for the [Trace] window in the following steps.

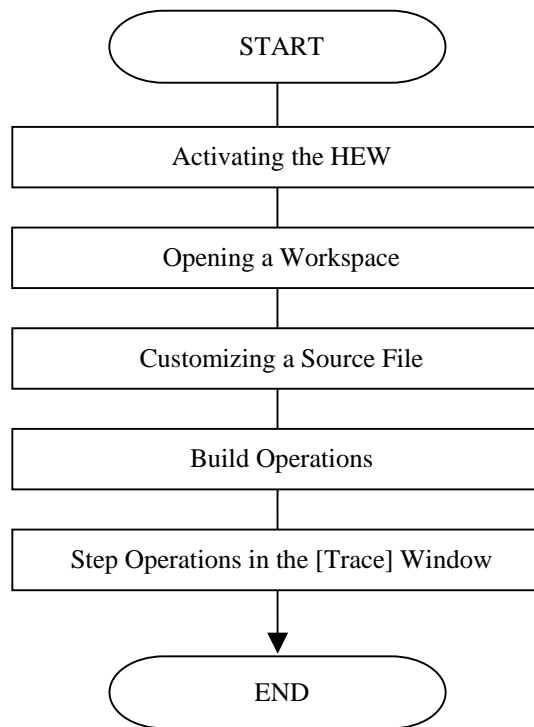
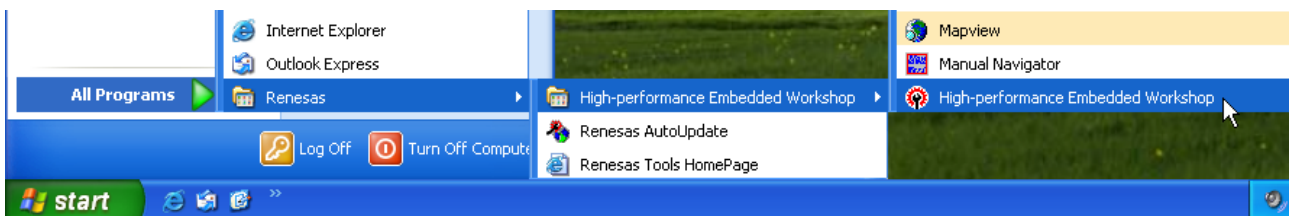


Figure 4.1 Procedures for Sample Program Execution

4.1 Activating the High-Performance Embedded Workshop

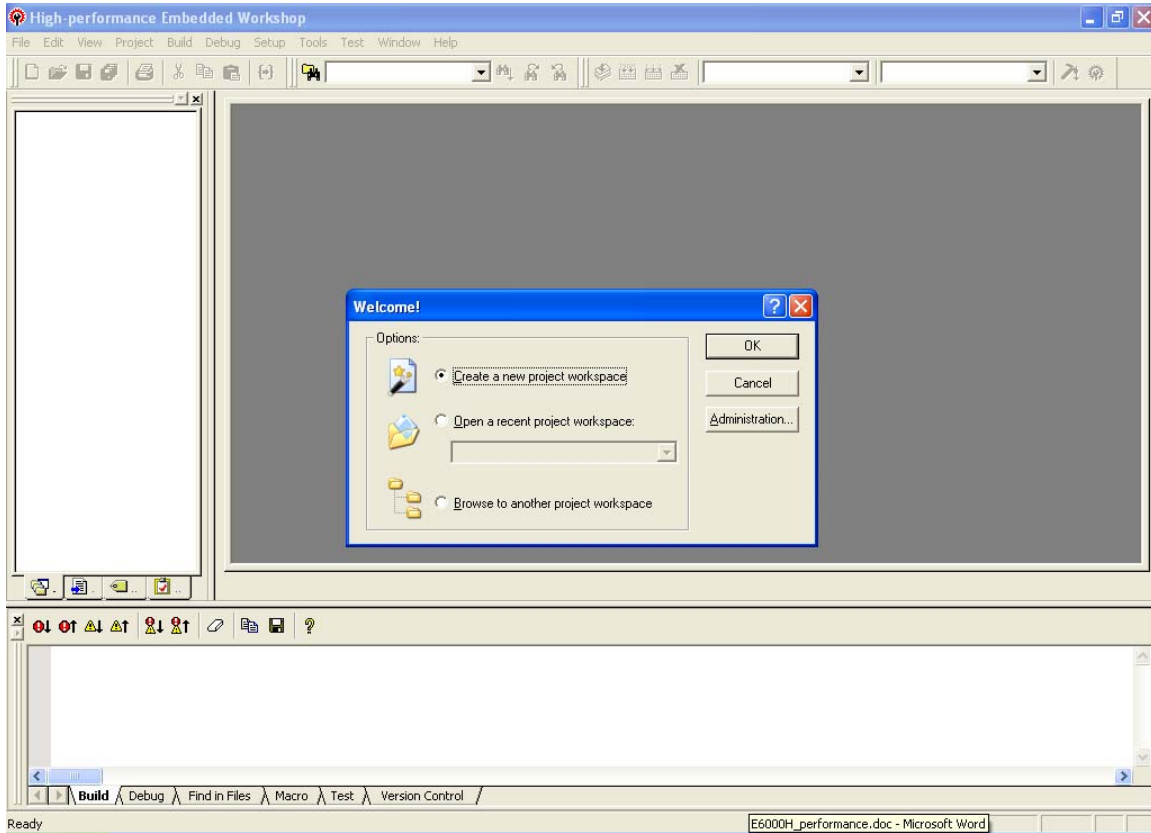
First, connect the H8/300H Tiny series compact emulator to the host computer via the USB cable to check that debugging is available.



Then, activate the High-performance Embedded Workshop by opening the [Start] menu and selecting [All Programs], [Renesas], [High-performance Embedded Workshop], and [High-performance Embedded Workshop] in that order.

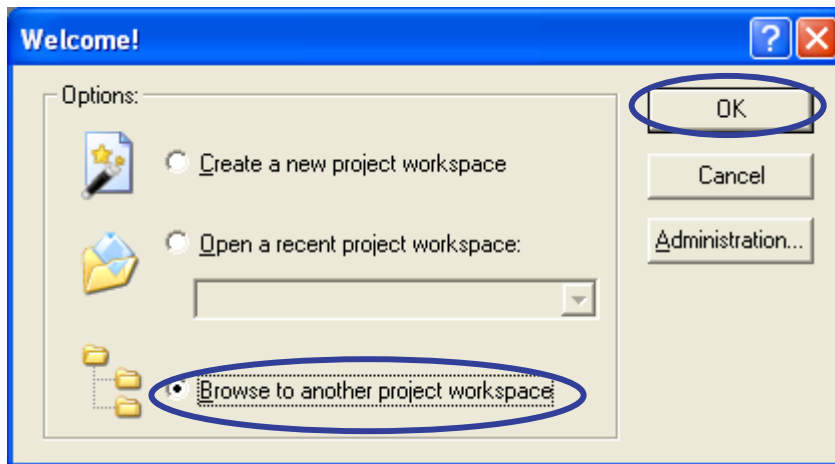
4.2 Opening a Workspace

(1) The [Welcome!] dialog box will appear on the High-performance Embedded Workshop window.

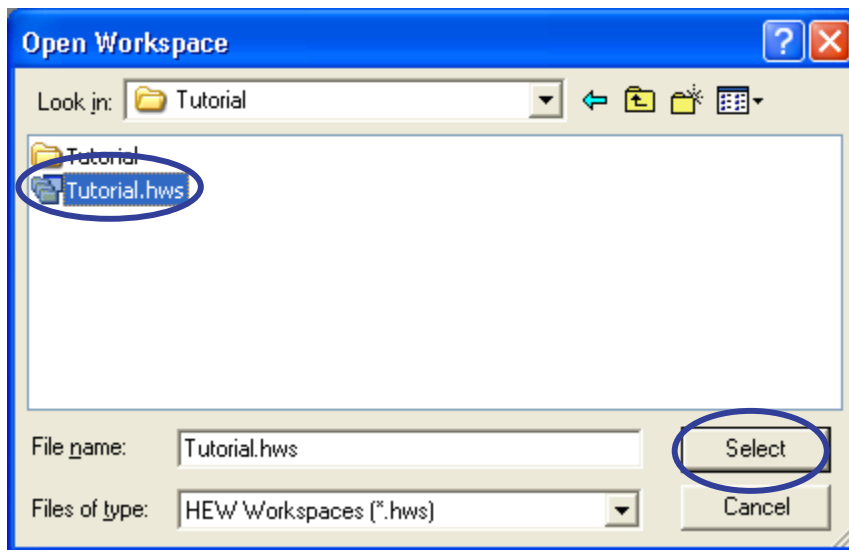


Check that the H8/300H Tiny series compact emulator is turned on.

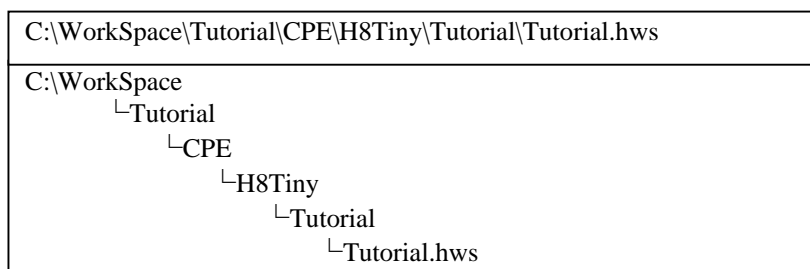
Select the [Browse to another project workspace] radio button in the [Welcome!] dialog box and click on the [OK] button.



(2) The [Open Workspace] dialog box will appear.



If the software from the CD-ROM for this product has been installed, workspace "Tutorial.hws" will be within the directory structure as shown below (standard location). Specify the correct location by opening the folders in order. Select the workspace "Tutorial.hws" and click on the [Open] button.



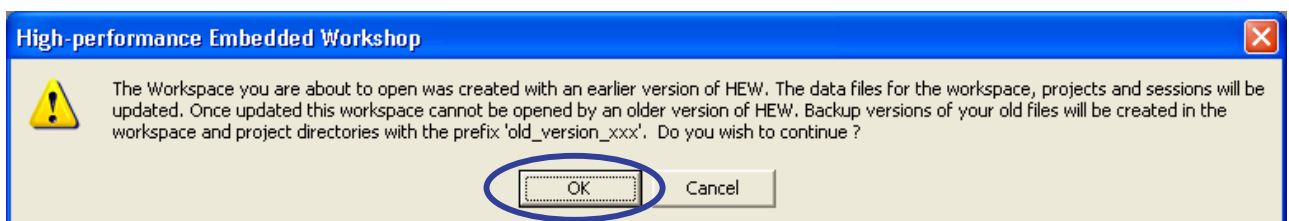
Note: Depending on the software version, the above directory may not be specifiable. In this case, select the following directory.

<High-performance Embedded Workshop installation directory>
 \Tools\Renesas\DebugComp\Platform\CPE\H8Tiny\Tutorial

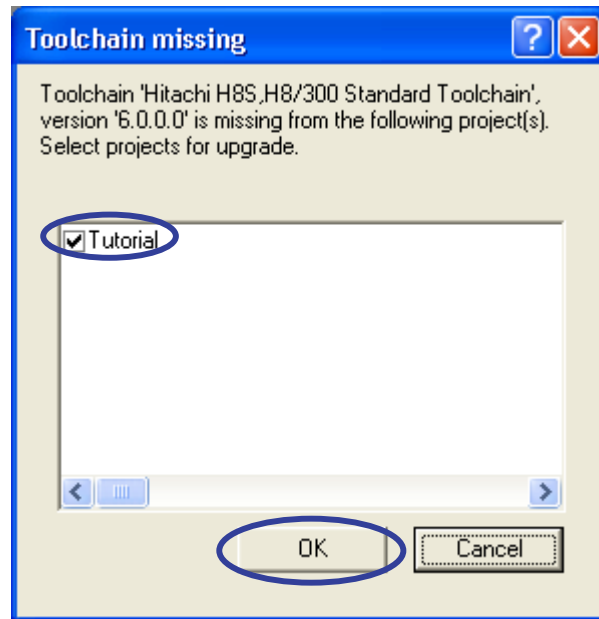
Examples of directory names:

C:\hew3\Tools\Renesas\DebugComp\Platform\CPE\H8Tiny\Tutorial
 C:\hew2\Tools\Renesas\DebugComp\Platform\CPE\H8Tiny\Tutorial

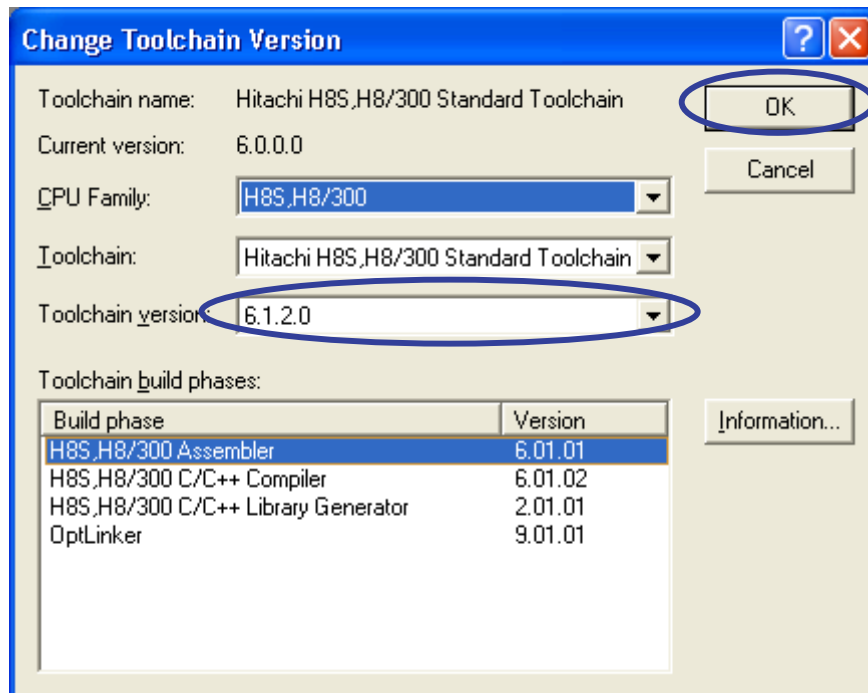
(3) If the workspace is an old version, the following dialog box will appear. To update it to the new version, click on the [OK] button.



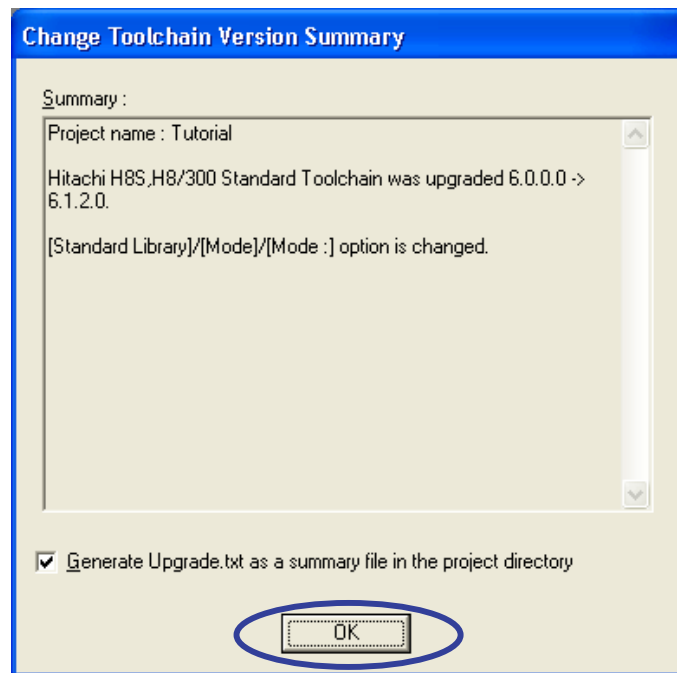
- (4) If the [Toolchain missing] dialog box appears, select the name of the target project and click on the [OK] button.



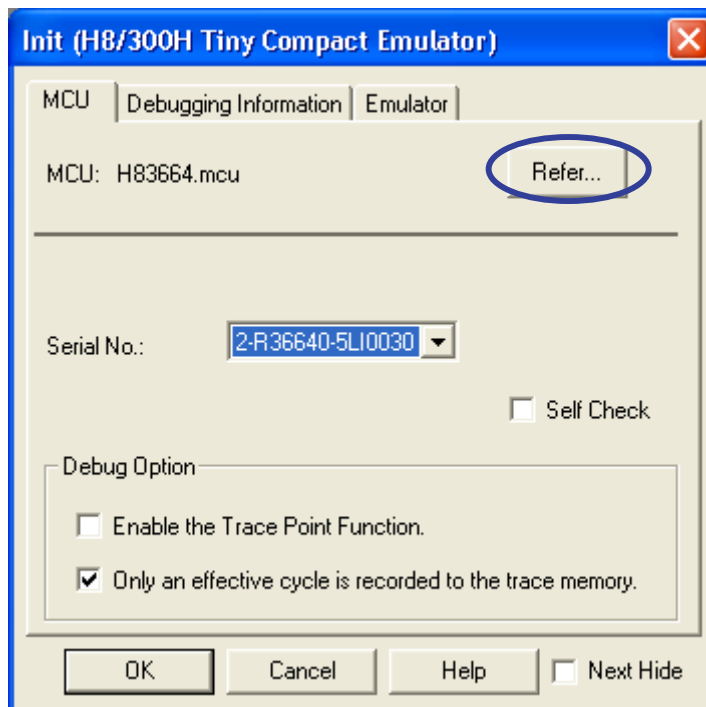
- (5) If the [Changing Toolchain Version] dialog box appears, select the desired toolchain version and click on the [OK] button.



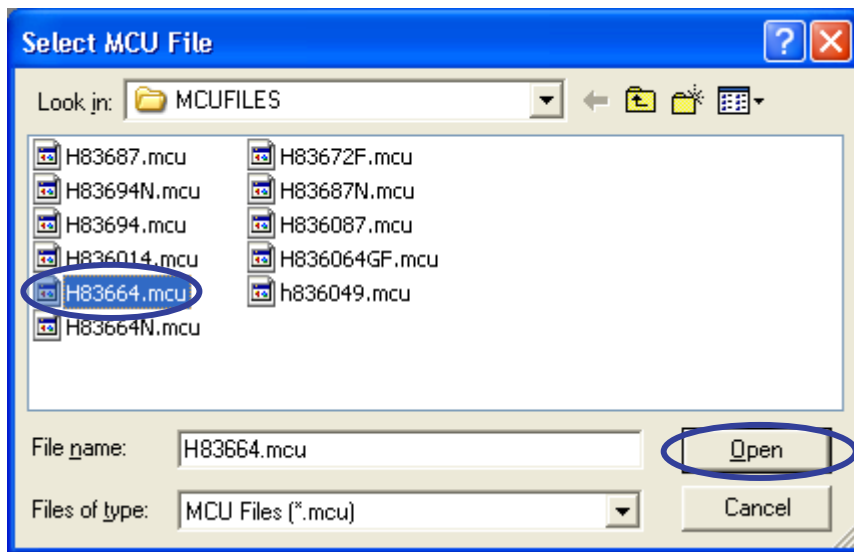
(6) If the [Change Toolchain Version Summary] dialog box appears, just click on the [OK] button.



(7) After the workspace has been opened, the [Init (H8/300H Tiny Compact Emulator)] dialog box will appear. Click on [Browse...].

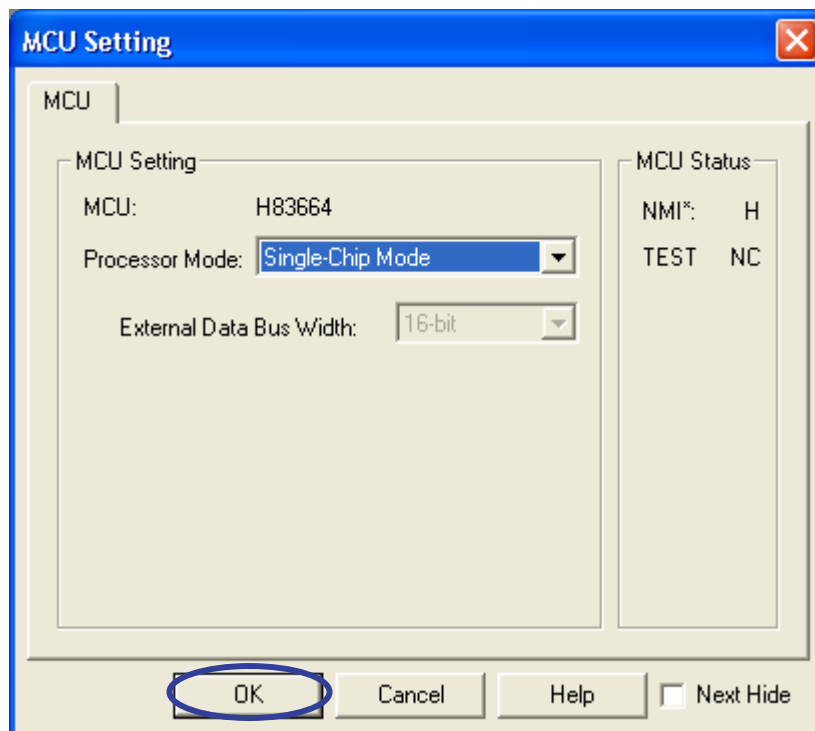


(8) The [Select MCU File] dialog box will appear. Here, select [H83664.mcu] and click on the [Open] button.

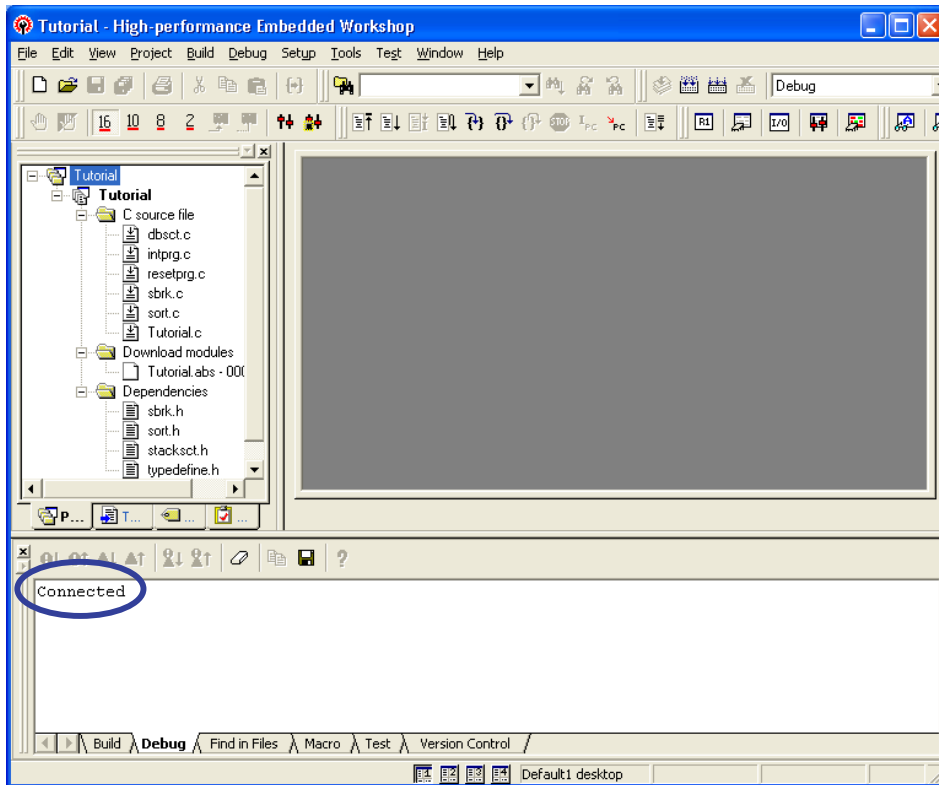


Return to the [Init (H8/300H Tiny Compact Emulator)] dialog box and click on the [OK] button.

(9) The [MCU Setting] dialog box will appear. Check that the processor mode is [Single-Chip Mode] and click on the [OK] button.



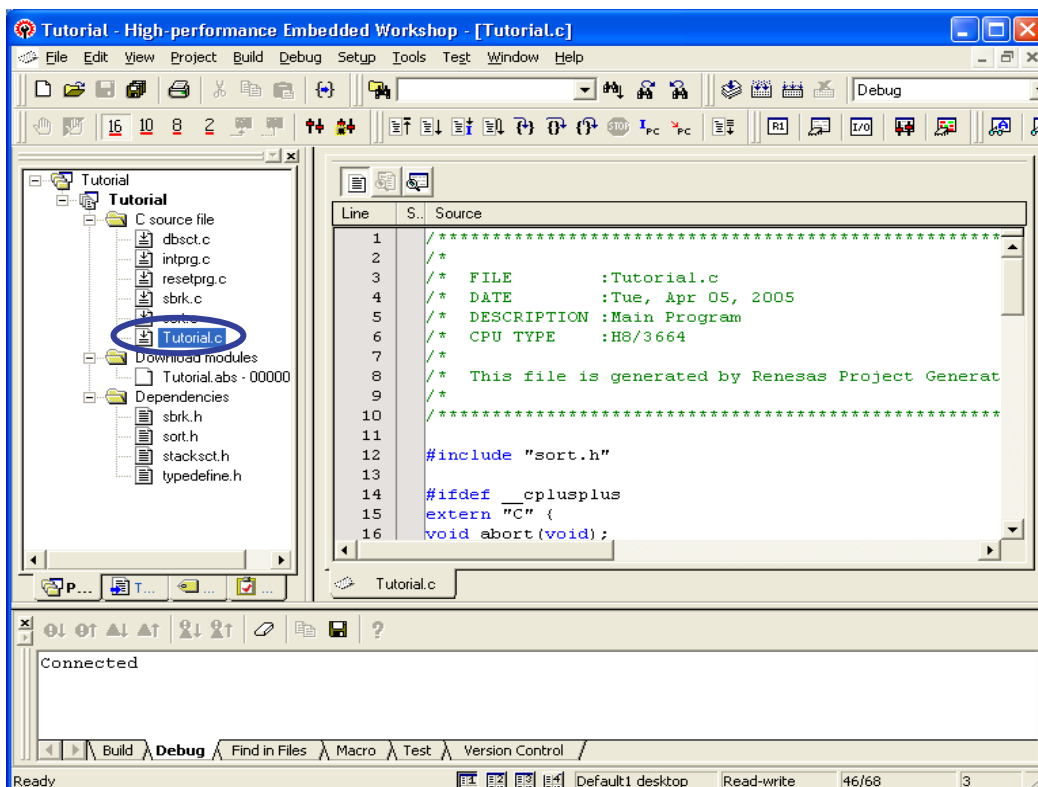
- Once the workspace has been read, operations in the High-performance Embedded Workshop screen become possible.



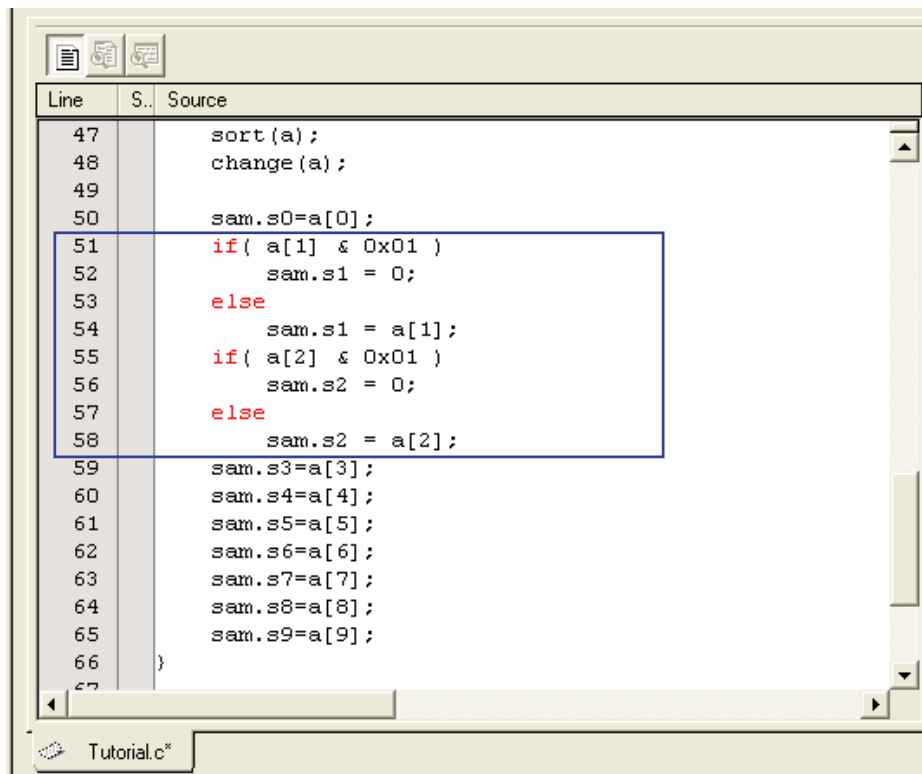
When the H8/300H Tiny series compact emulator is successfully connected, [Connected] is displayed in the [Debug] tab in the [Output] window.

4.3 Customizing a Source File

- Open the source file by double-clicking on its name ("Tutorial.c") in the workspace pane.

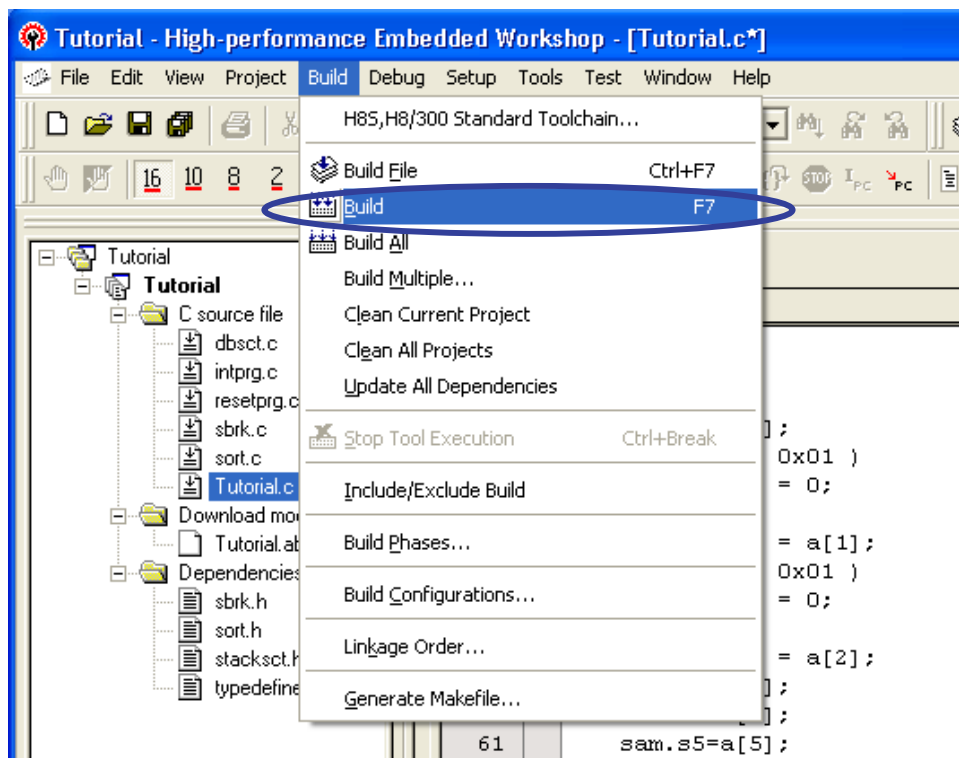


(2) Add if-else statements to lines 51 to 58 in the [Source] window, as shown below.



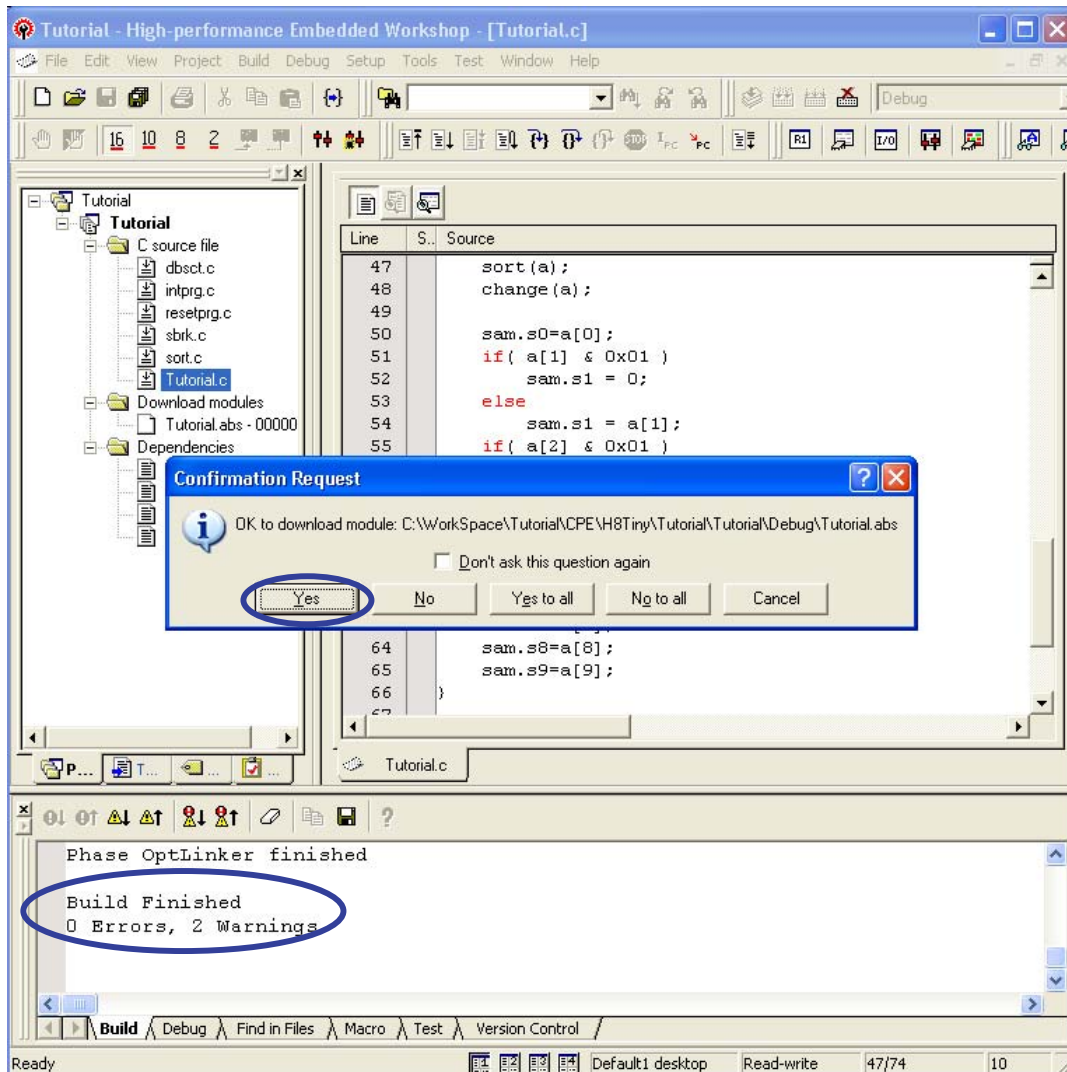
4.4 Build Operations

(1) Before loading of the program for the customized source file, a build operation must be performed. Click on the [Build] item of the [Build] menu.



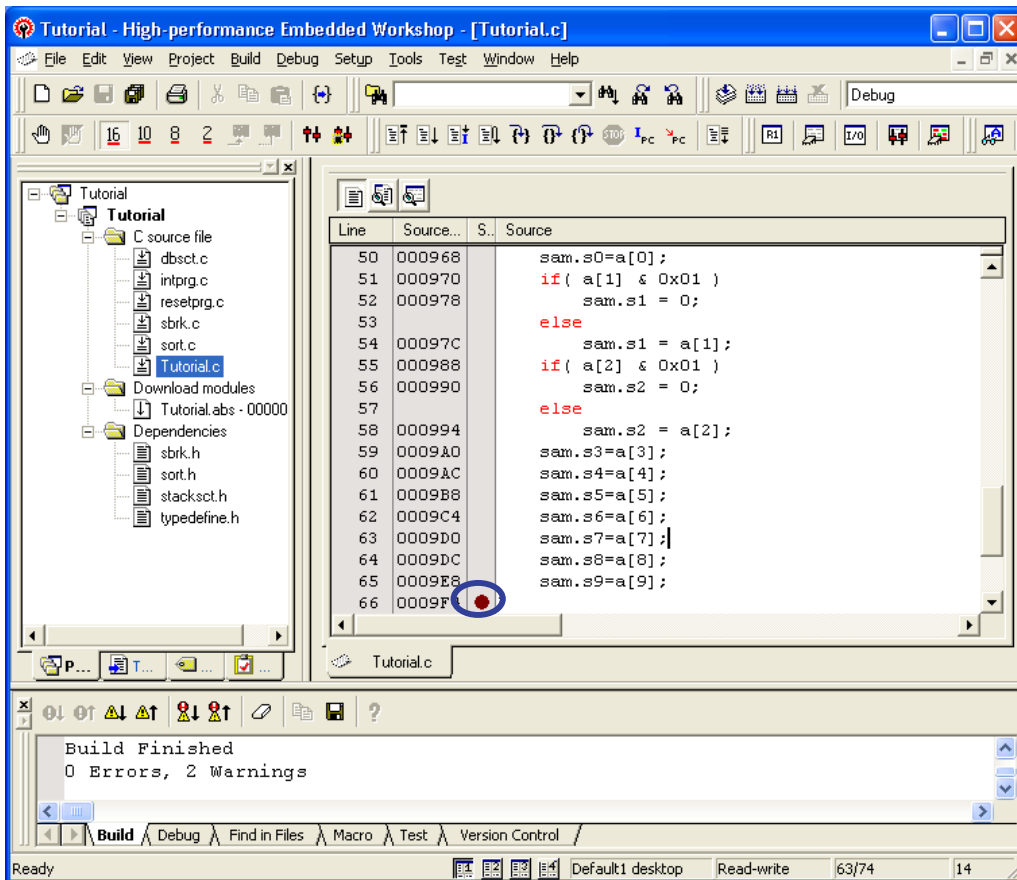
Select the [Build] tab in the [Output] window to check how far building has progressed.

- (2) On completion of building, the numbers of errors and warnings that have been generated are displayed in the [Build] tab in the [Output] window. Once downloading is possible, the [Check Request] dialog box for downloading of the program automatically appears. Here, click on the [Yes] button.

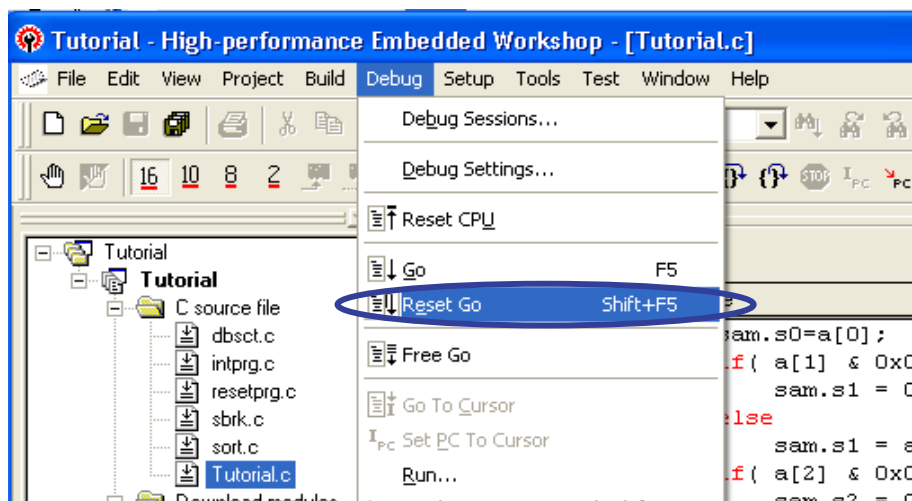


4.5 Step Operations in the [Trace] Window

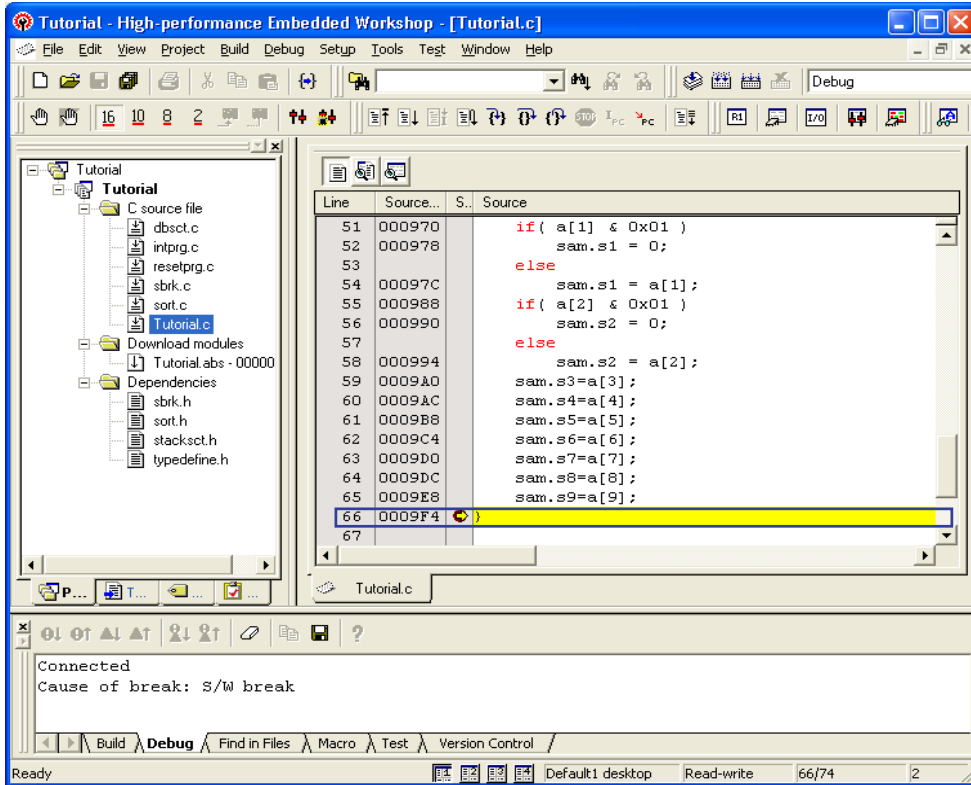
- (1) Double-click on the [S/W Breakpoint] column for line 66 of the [Source] window to set a breakpoint.



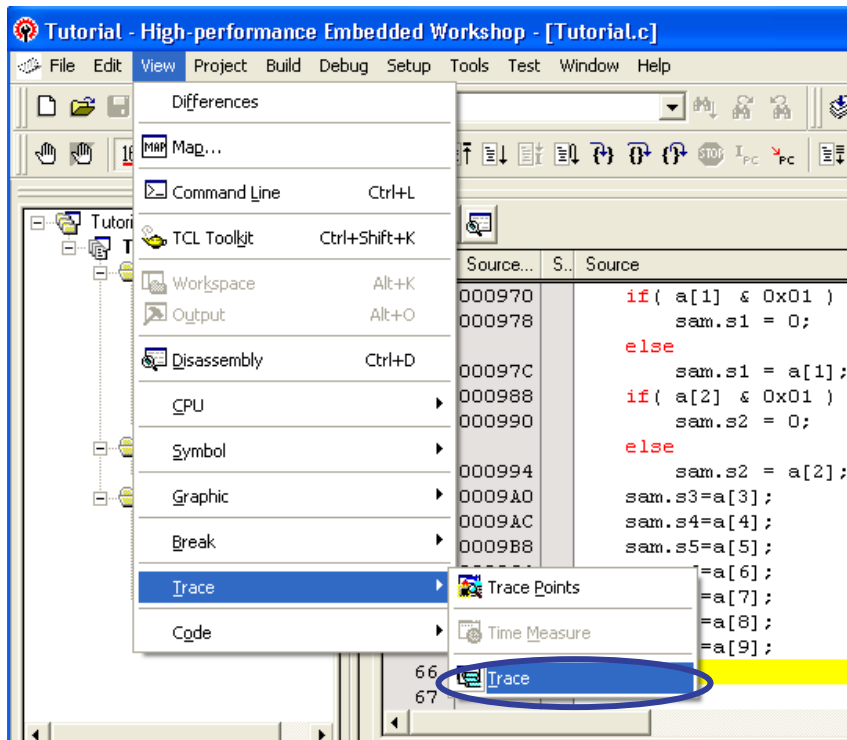
- (2) Click on [Reset Go] from the [Debug] menu to run the program.



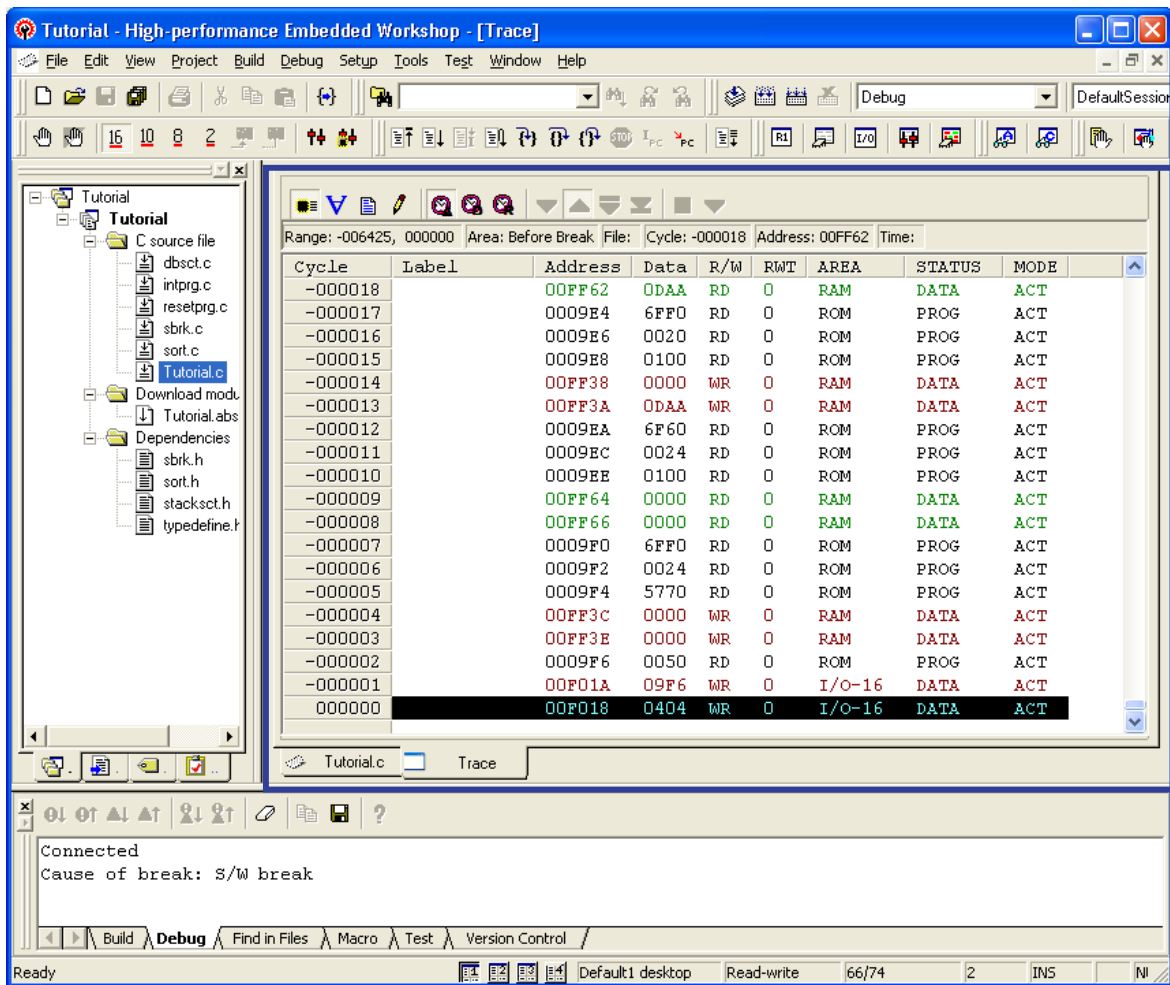
- (3) Execution is stopped at line 66 of the source program ("Tutorial.c"). A yellow arrow in the [Source] window indicates the position of the program counter (PC), and the corresponding section of the source code is highlighted in yellow.



- (4) Click on [Trace] in the sub-menu for the [Trace] item of the [View] menu.



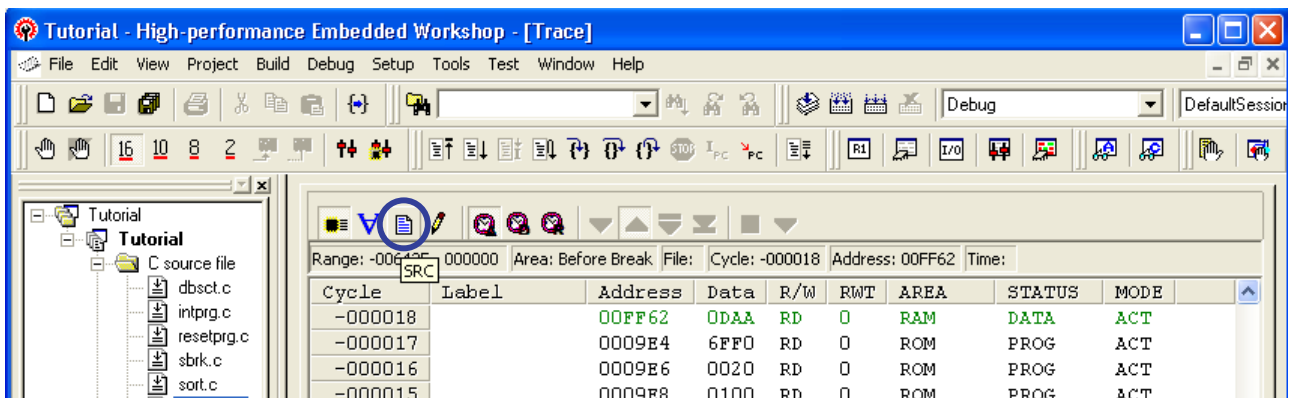
(5) The [Trace] window is displayed.



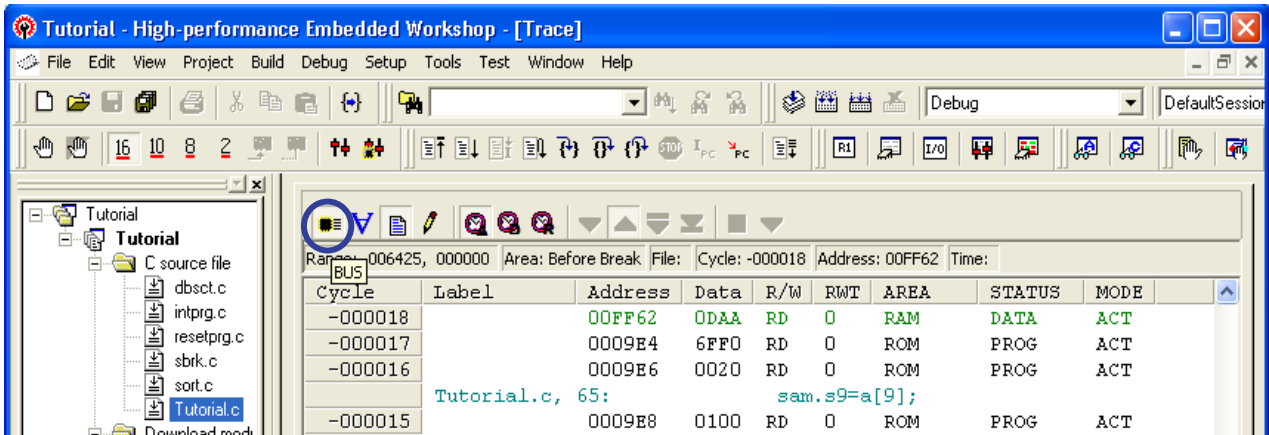
When the docking view has been selected, click the right-hand mouse button with the cursor on the [Trace] window to cancel the [Docking View] item of the popup menu.

The display in the [Trace] window is in one of three modes: bus cycle (BUS), disassembly (DIS), and source (SRC), and these can be mixed. Back-tracing, which is described in this document, is only available for a source (SRC) display.

(6) Click on the [SRC] button in the toolbar for the [Trace] window to enable the source (SRC) mode.

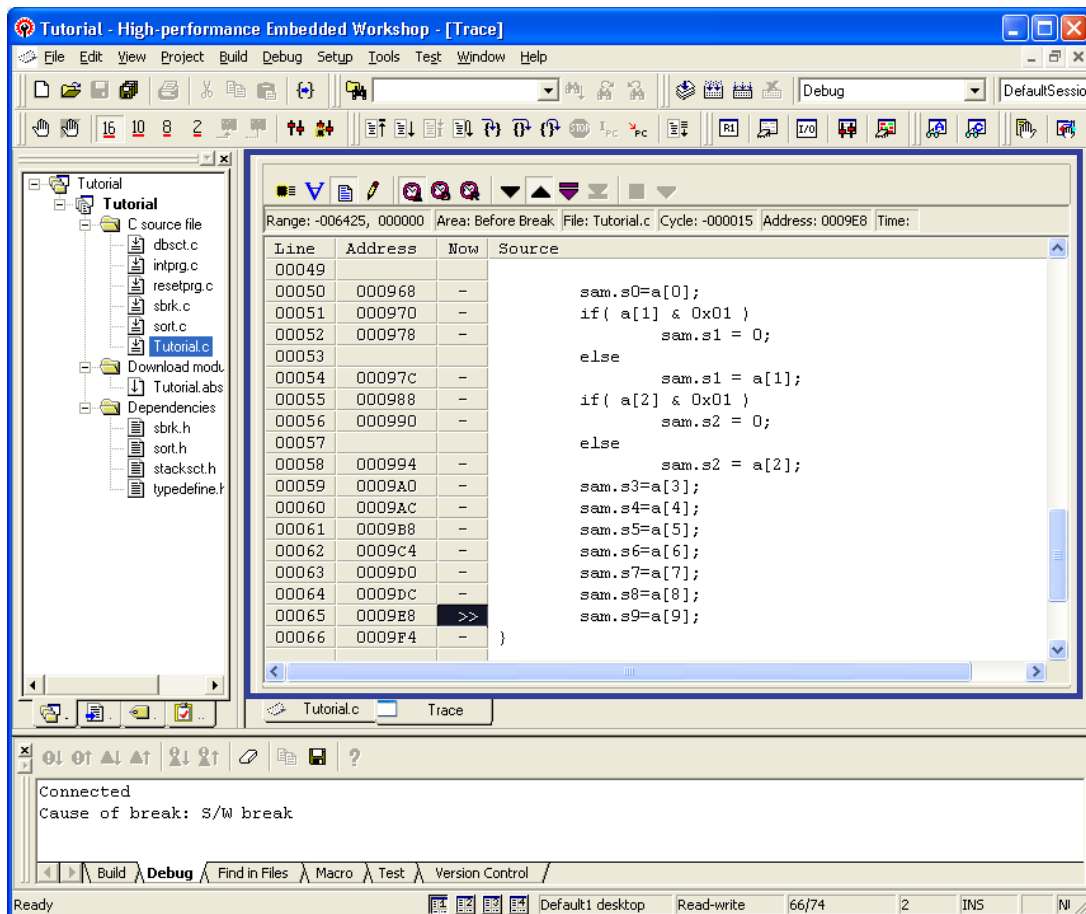


- (7) Click on the [BUS] button in the toolbar for the [Trace] window to take the display out of bus-cycle (BUS) mode.



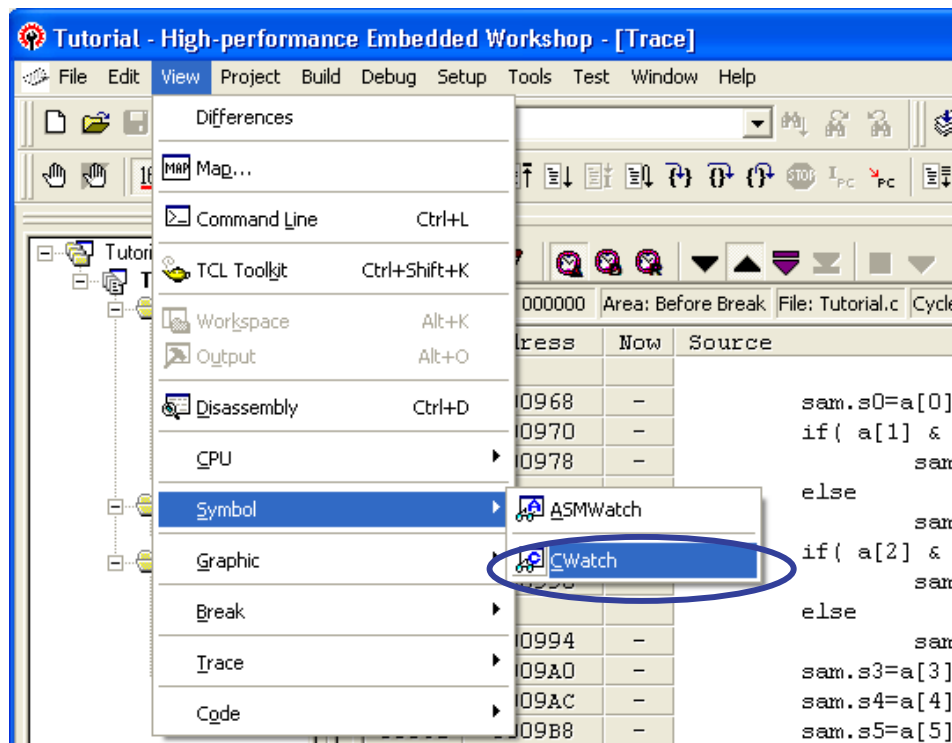
If the disassembly (DIS) mode has also been enabled, click on the [DIS] button in the toolbar to take the display out of this mode.

- (8) When only the source (SRC) mode is enabled, an image of lines of source code is displayed in the [Trace] window as shown below.

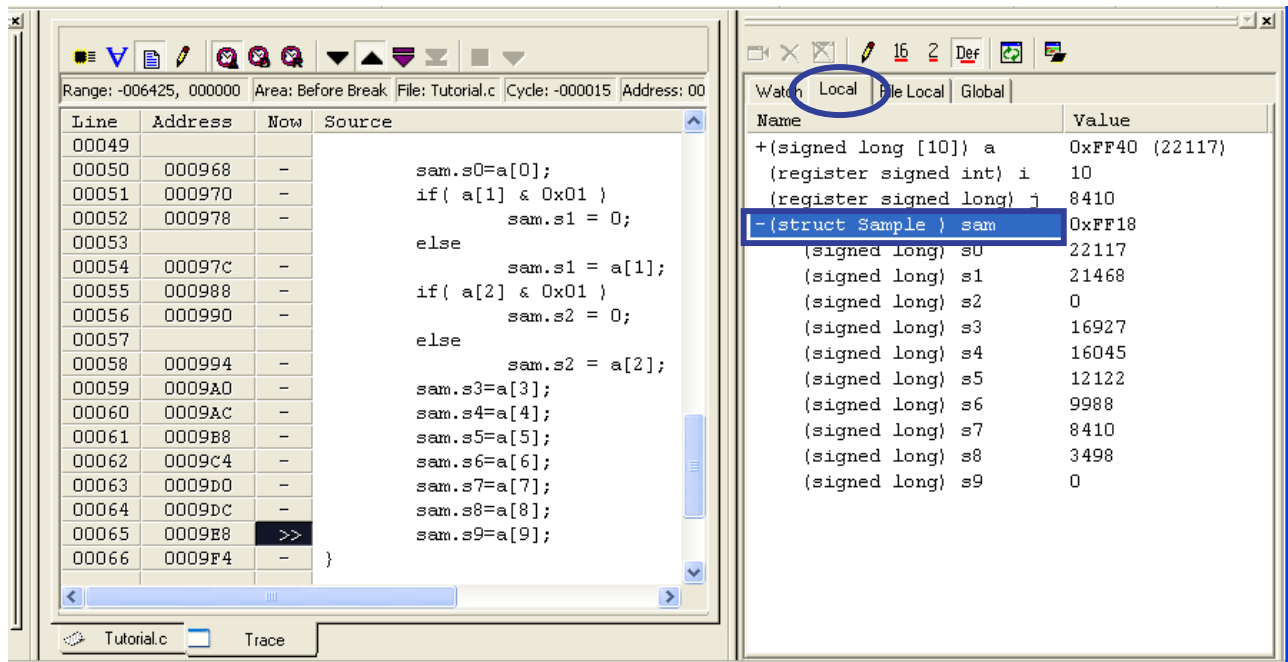


In the [Now] column of the [Trace] window, ">>" is displayed to indicate the cycle currently being referred to. For other lines of source code that have corresponding addresses, "-" is displayed in this column.

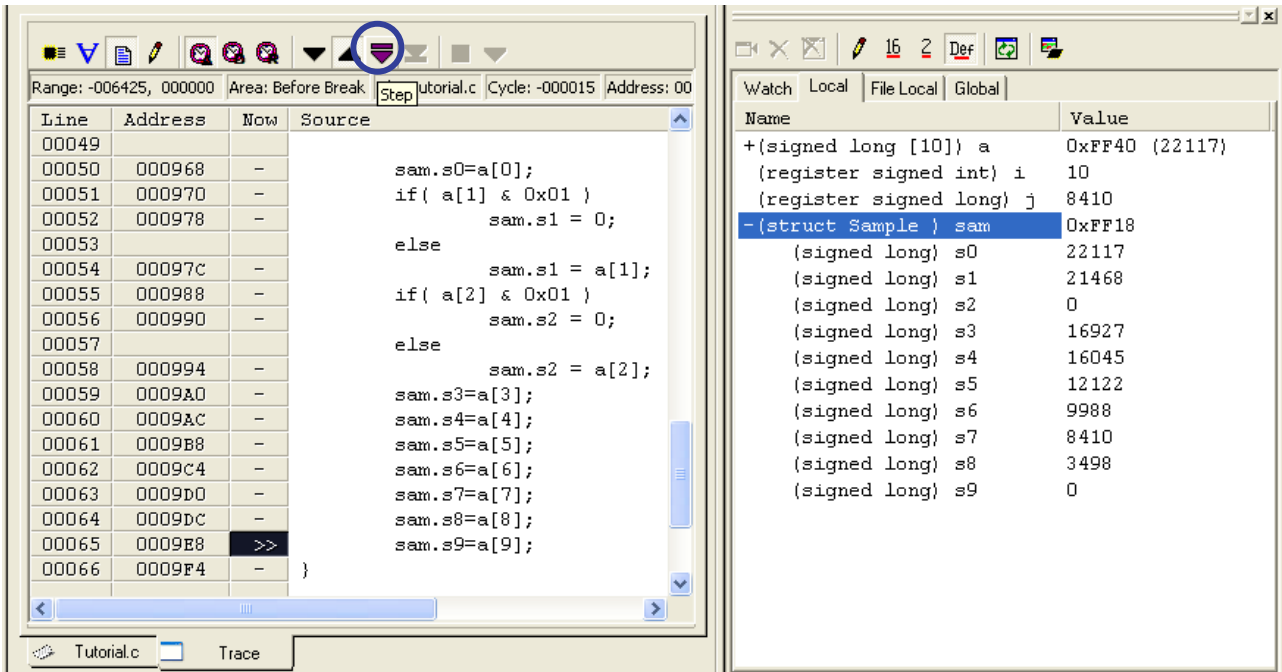
(9) Select [Symbol] from the [View] menu and click on [C Watch].



(10) Once the [C Watch] window has appeared, select the [Local] tab and double-click on the local variable name "sam" so that its display is in the expanded state.

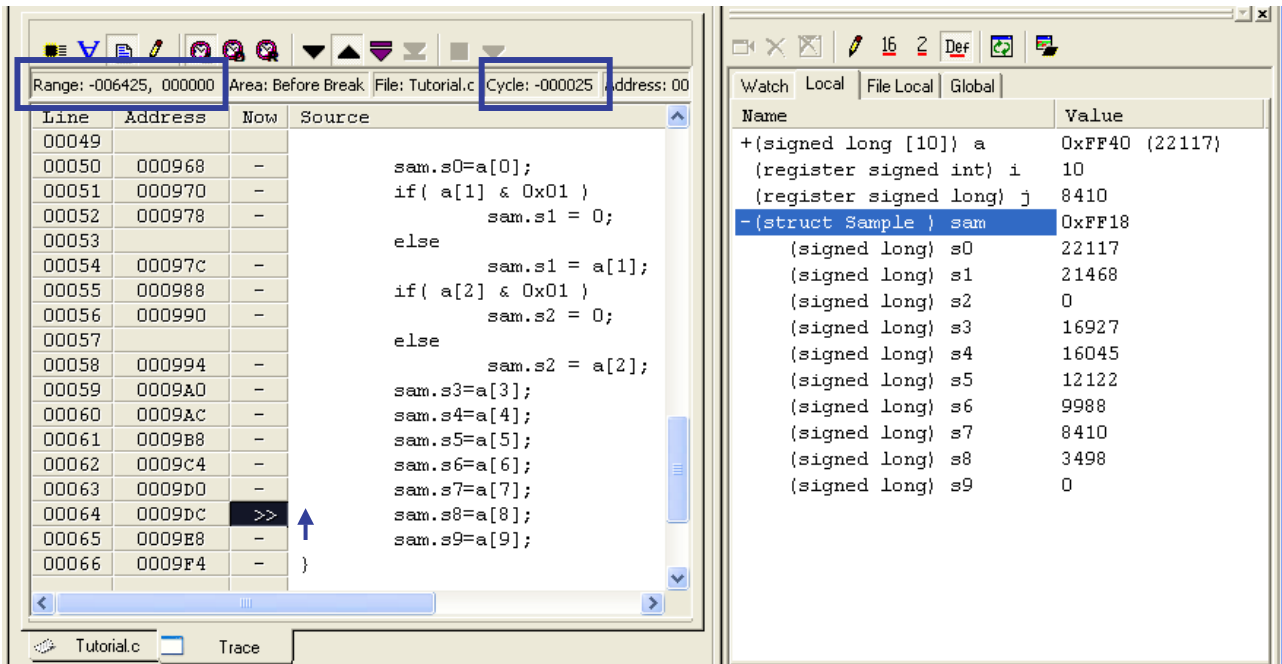


(11) Click on the [Step] button in the toolbar of the [Trace] window.



If the [Backward] button (upward triangle) is not active, click on the button to activate it.

(12) The symbol ">>", indicating the cycle currently being referred to is moved from line 65 to line 64.



This indicates that line 64 was executed before line 65.

The value for [Cycle], which shows the location of the current cycle in the results of trace measurement, is changed from (-000015) to (-000025). This means that the condition of an address corresponding to source-line information for a search in the negative direction from cycle location (-000015) has been satisfied at cycle location (-000025).

The range of cycles covered by the results of trace measurement is displayed against [Range]. The last cycle for which information was acquired is expressed as (000000), with cycles further in the past having increasing negative values. In the example covered by this document, results of trace measurement have been acquired over 6426 cycles (from (-006425) to (000000)).

In the H8/300H Tiny series compact emulator, results of trace measurement can be acquired for up to 64 cycles.

(13) Similarly, clicking on the [Step] button five times moves the cycle location one line at a time until the reference cycle symbol indicates line 59 as shown below.

Line	Address	Now	Source
00049			
00050	000968	-	sam.s0=a[0];
00051	000970	-	if(a[1] & 0x01)
00052	000978	-	sam.s1 = 0;
00053			else
00054	00097C	-	sam.s1 = a[1];
00055	000988	-	if(a[2] & 0x01)
00056	000990	-	sam.s2 = 0;
00057			else
00058	000994	-	sam.s2 = a[2];
00059	0009A0	>>	sam.s3=a[3];
00060	0009AC	-	sam.s4=a[4];
00061	0009B8	-	sam.s5=a[5];
00062	0009C4	-	sam.s6=a[6];
00063	0009D0	-	sam.s7=a[7];
00064	0009DC	-	sam.s8=a[8];
00065	0009E8	-	sam.s9=a[9];
00066	0009F4	-	}

Name	Value
+(signed long [10]) a	0xFF40 (22117)
(register signed int) i	10
(register signed long) j	8410
-(struct Sample) sam	0xFF18
(signed long) s0	22117
(signed long) s1	21468
(signed long) s2	0
(signed long) s3	16927
(signed long) s4	16045
(signed long) s5	12122
(signed long) s6	9988
(signed long) s7	8410
(signed long) s8	3498
(signed long) s9	0

(14) Clicking on the [Step] button again moves the reference cycle symbol from line 59 to line 56.

Line	Address	Now	Source
00049			
00050	000968	-	sam.s0=a[0];
00051	000970	-	if(a[1] & 0x01)
00052	000978	-	sam.s1 = 0;
00053			else
00054	00097C	-	sam.s1 = a[1];
00055	000988	-	if(a[2] & 0x01)
00056	000990	>>	sam.s2 = 0;
00057			else
00058	000994	-	sam.s2 = a[2];
00059	0009A0	-	sam.s3=a[3];
00060	0009AC	-	sam.s4=a[4];
00061	0009B8	-	sam.s5=a[5];
00062	0009C4	-	sam.s6=a[6];
00063	0009D0	-	sam.s7=a[7];
00064	0009DC	-	sam.s8=a[8];
00065	0009E8	-	sam.s9=a[9];
00066	0009F4	-	}

Name	Value
+(signed long [10]) a	0xFF40 (22117)
(register signed int) i	10
(register signed long) j	8410
-(struct Sample) sam	0xFF18
(signed long) s0	22117
(signed long) s1	21468
(signed long) s2	0
(signed long) s3	16927
(signed long) s4	16045
(signed long) s5	12122
(signed long) s6	9988
(signed long) s7	8410
(signed long) s8	3498
(signed long) s9	0

At this point the condition for the if statement on line 55 had been true, so line 56 was executed instead of the statement on line 58, which follows the else statement. Zero has thus been assigned to the local variable "sam.s2".

(15) If we continue to follow the trace back by clicking on the [Step] button, we reach the point where line 54 was executed because the condition for the if statement on line 51 had been false.

Line	Address	Now	Source
00049			
00050	000968	-	sam.s0=a[0];
00051	000970	-	if(a[1] & 0x01)
00052	000978	-	sam.s1 = 0;
00053			else
00054	00097c	>>	sam.s1 = a[1];
00055	000988	-	if(a[2] & 0x01)
00056	000990	-	sam.s2 = 0;
00057			else
00058	000994	-	sam.s2 = a[2];
00059	0009A0	-	sam.s3=a[3];
00060	0009AC	-	sam.s4=a[4];
00061	0009B8	-	sam.s5=a[5];
00062	0009C4	-	sam.s6=a[6];
00063	0009D0	-	sam.s7=a[7];
00064	0009DC	-	sam.s8=a[8];
00065	0009E8	-	sam.s9=a[9];
00066	0009F4	-	}

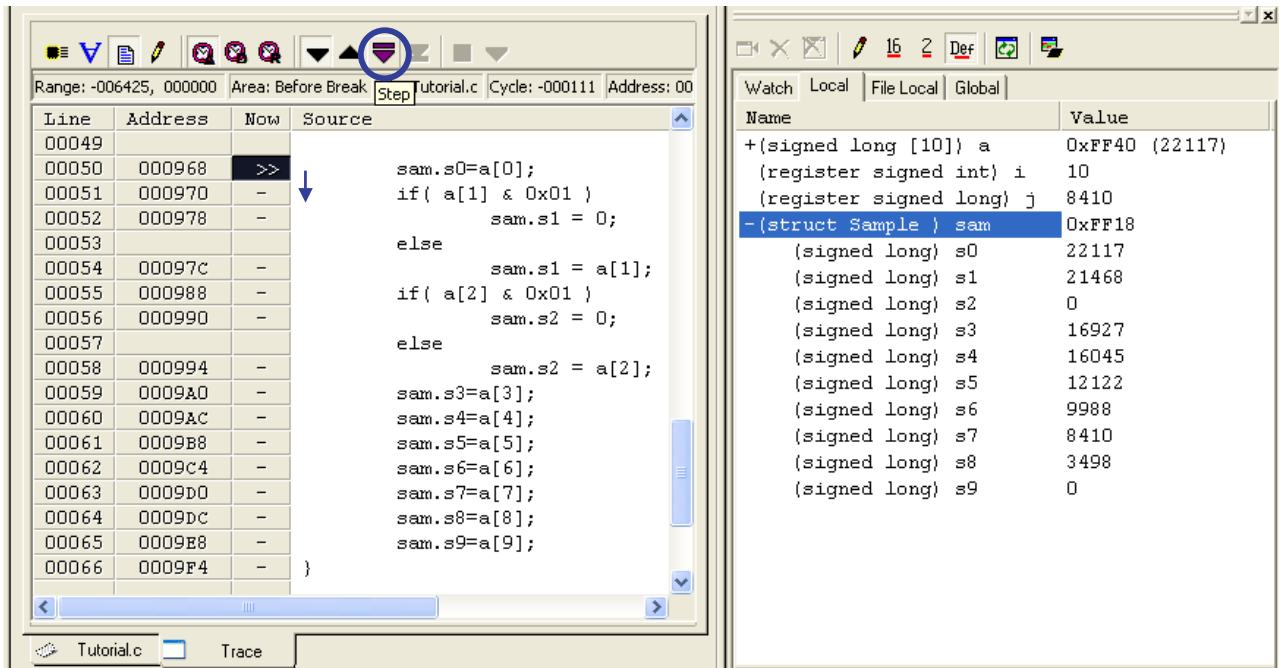
Name	Value
+(signed long [10]) a	0xFF40 (22117)
(register signed int) i	10
(register signed long) j	8410
-(struct Sample) sam	0xFF18
(signed long) s0	22117
(signed long) s1	21468
(signed long) s2	0
(signed long) s3	16927
(signed long) s4	16045
(signed long) s5	12122
(signed long) s6	9988
(signed long) s7	8410
(signed long) s8	3498
(signed long) s9	0

(16) To change the direction of stepping, click on the [Upward] button (backward triangle) in the toolbar of the [Trace] window.

Line	Address	Now	Source
00049			
00050	000968	>>	sam.s0=a[0];
00051	000970	-	if(a[1] & 0x01)
00052	000978	-	sam.s1 = 0;
00053			else
00054	00097c	-	sam.s1 = a[1];
00055	000988	-	if(a[2] & 0x01)
00056	000990	-	sam.s2 = 0;
00057			else
00058	000994	-	sam.s2 = a[2];
00059	0009A0	-	sam.s3=a[3];
00060	0009AC	-	sam.s4=a[4];
00061	0009B8	-	sam.s5=a[5];
00062	0009C4	-	sam.s6=a[6];
00063	0009D0	-	sam.s7=a[7];
00064	0009DC	-	sam.s8=a[8];
00065	0009E8	-	sam.s9=a[9];
00066	0009F4	-	}

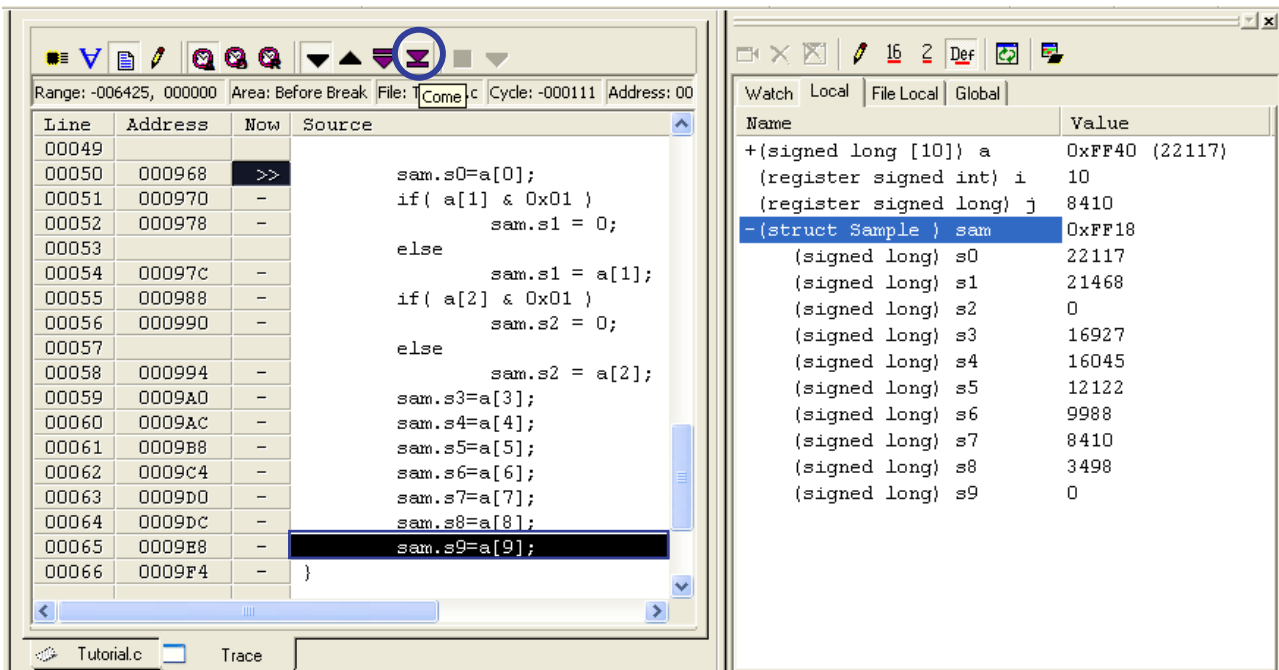
Name	Value
+(signed long [10]) a	0xFF40 (22117)
(register signed int) i	10
(register signed long) j	8410
-(struct Sample) sam	0xFF18
(signed long) s0	22117
(signed long) s1	21468
(signed long) s2	0
(signed long) s3	16927
(signed long) s4	16045
(signed long) s5	12122
(signed long) s6	9988
(signed long) s7	8410
(signed long) s8	3498
(signed long) s9	0

(17) Now, continuing to click on the [Step] button searches through the results of trace measurement for the current line in the positive direction.

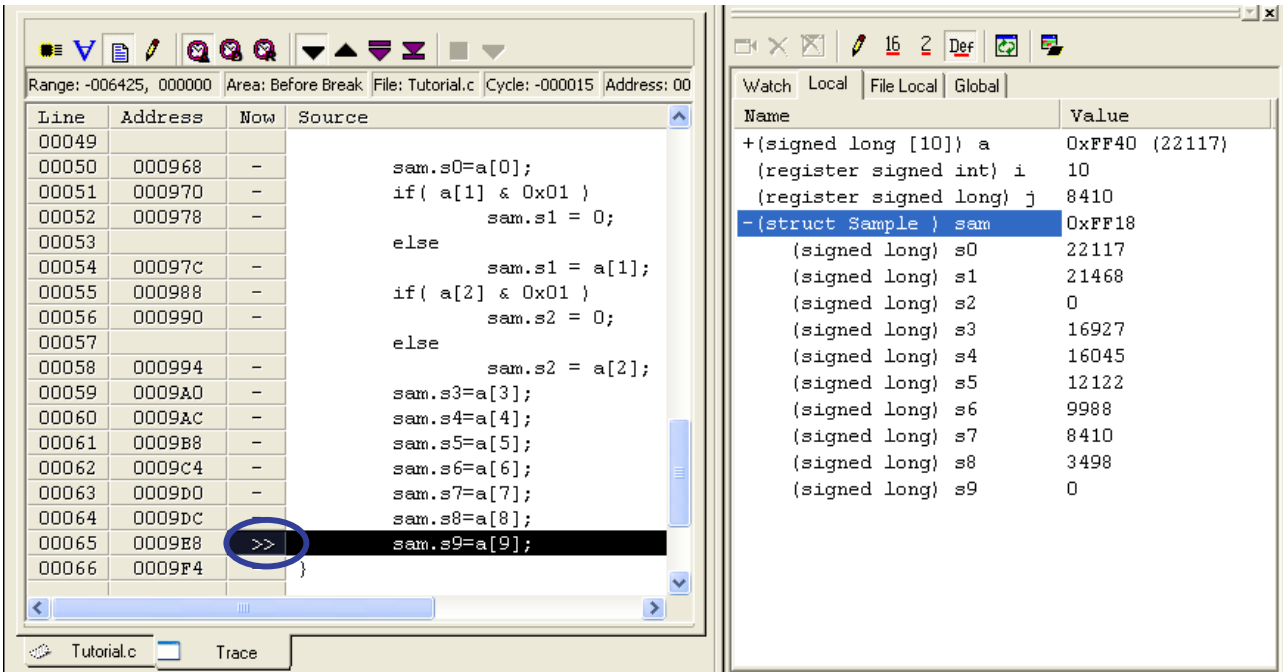


Click on the [Upward] and [Backward] buttons to change the direction of searching at any time. Using the results of trace measurement to check the path of execution of the source program enables efficiency in program debugging and test verification.

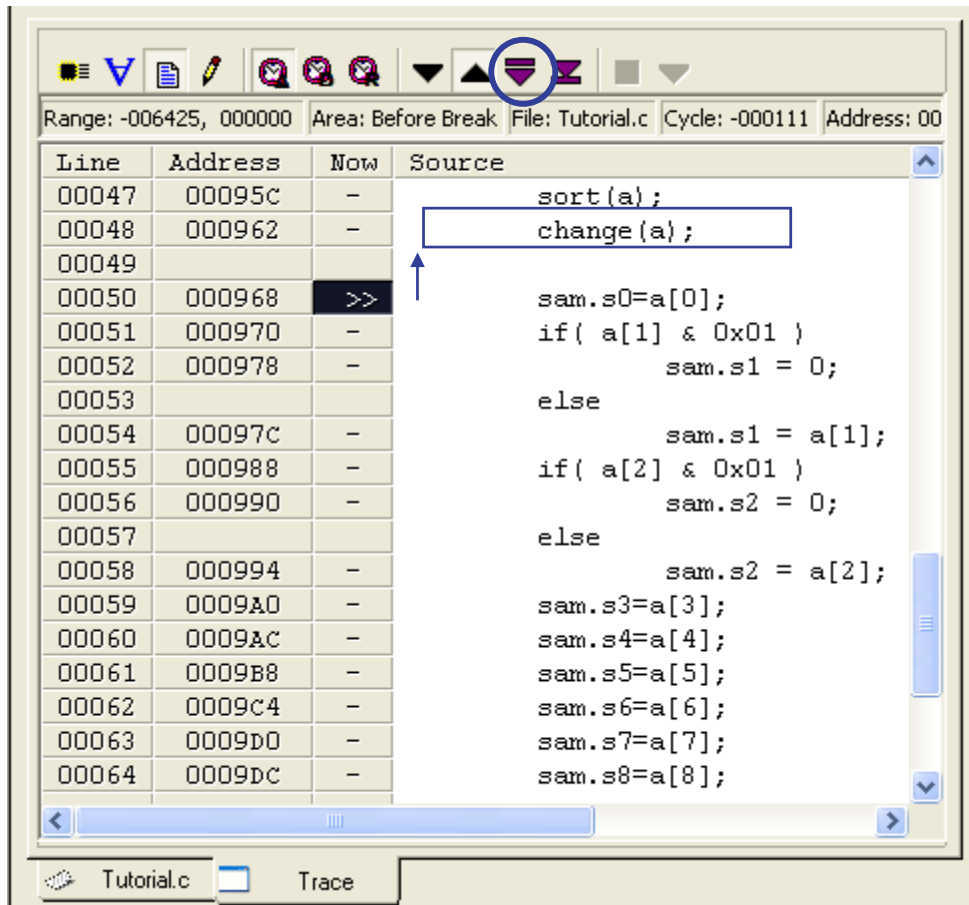
(18) To set a new cycle location for reference, select the line in [Source] and click on the [Come] button.



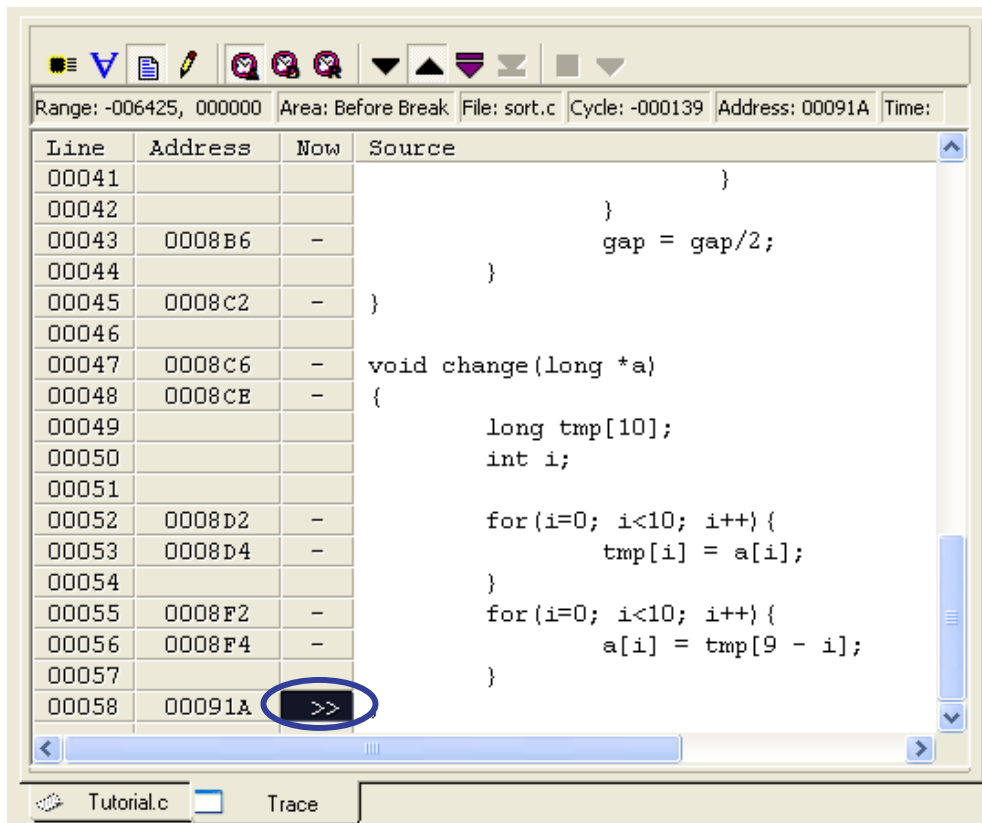
(19) In this case, the reference cycle symbol is set on line 65.



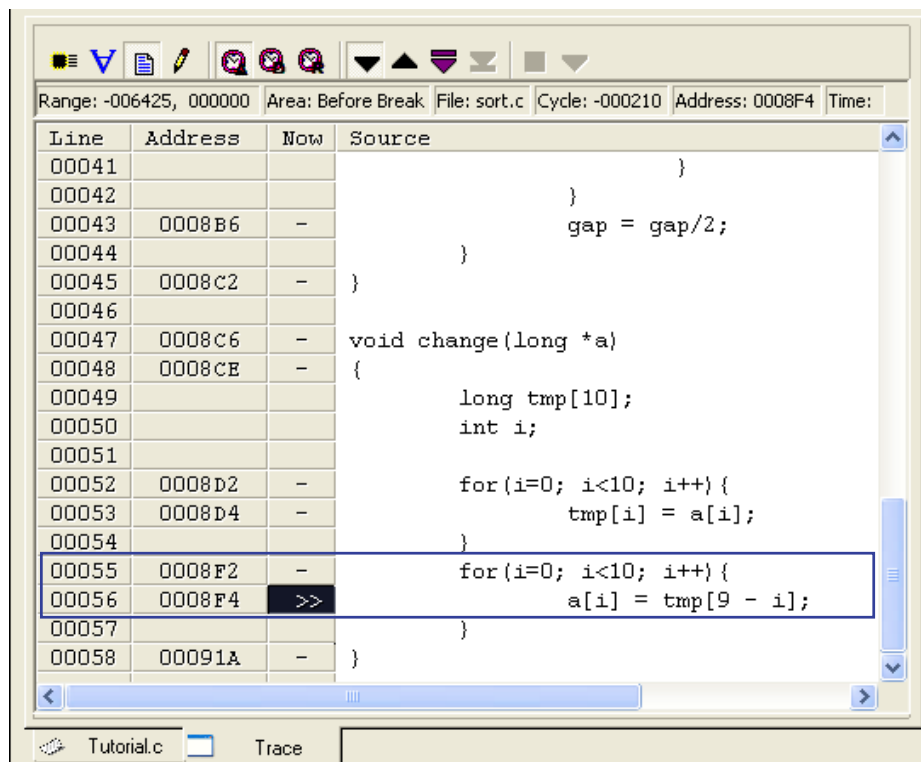
(20) In backward stepping, if exit from a function call immediately precedes the line containing the reference cycle symbol, the function call is indicated by a red arrow.



(21) In this case, the call of function "change" on line 58 is indicated.

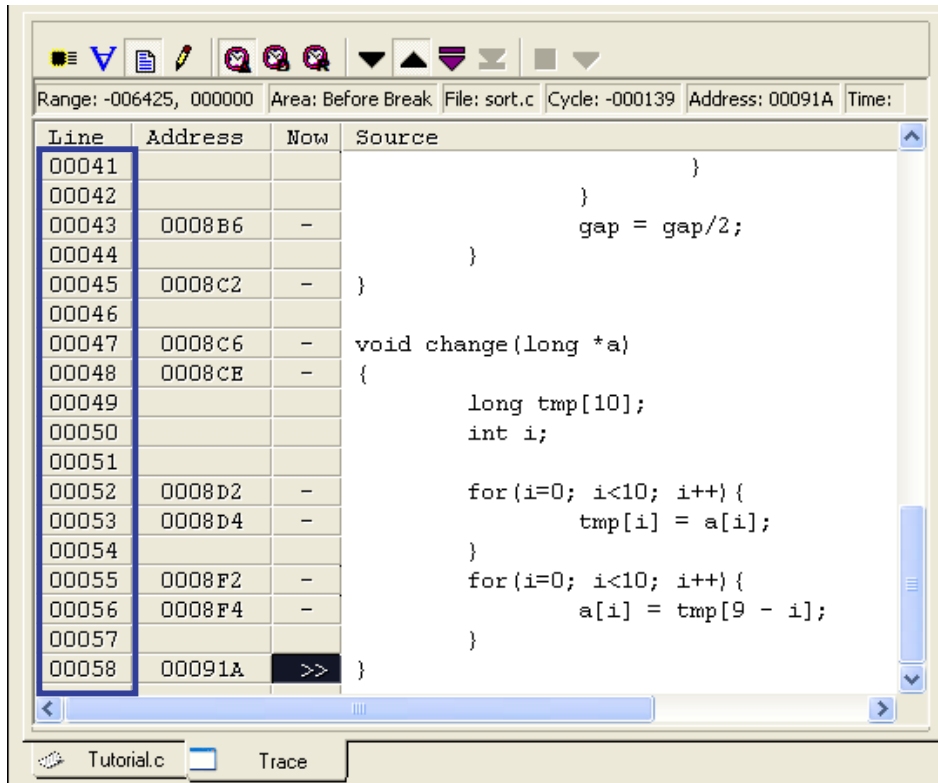


(22) If the program has a loop, the steps are repeated the same number of times as the actual number of iterations of the loop.



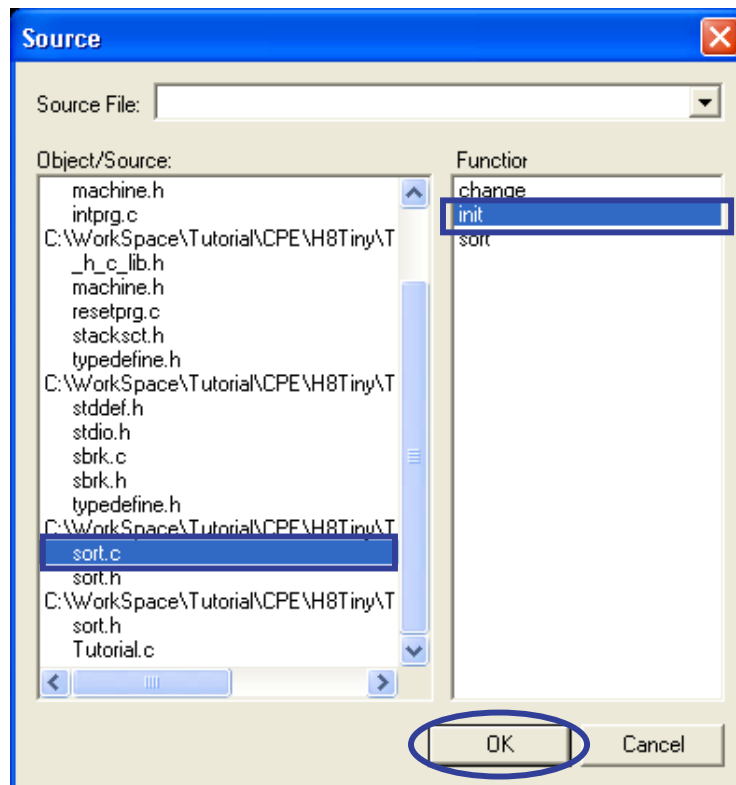
In the example above, line 56 is repeated ten times.

(23) Double-clicking on [Line] in the [Trace] window produces a dialog box that allows changing of the displayed file.

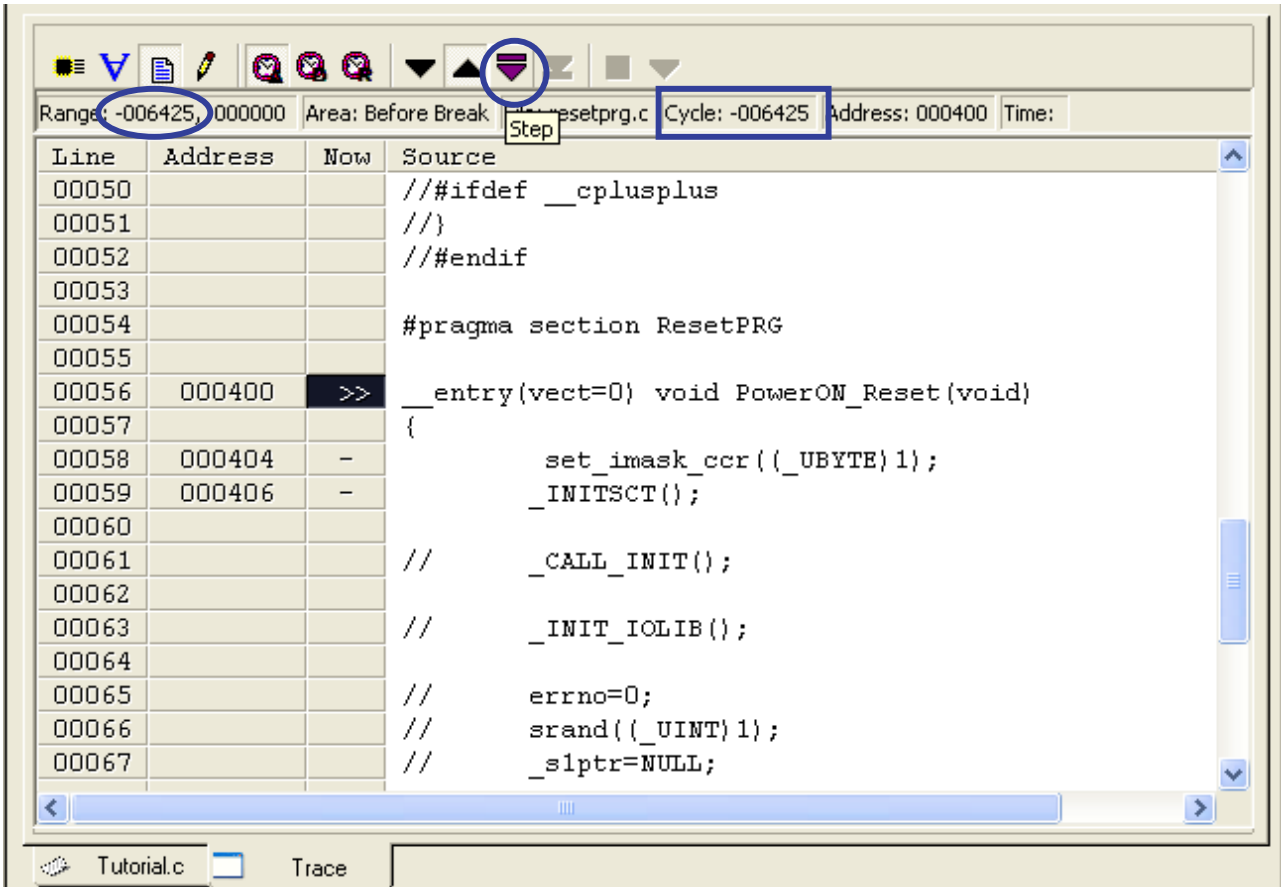


Double-clicking on any position within the column under [Line] has the same effect.

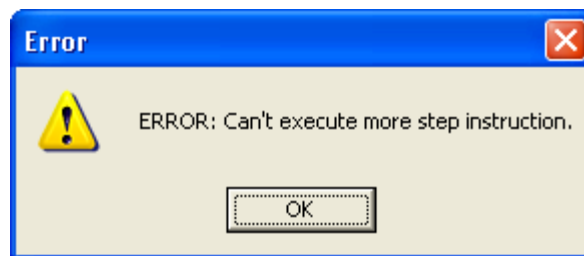
(24) When a file name is selected, a list of the functions it contains is displayed in the box at right. Select the name of the desired function and click on the [OK] button to display the specified function.



(25) When either end of the range corresponding to results of trace measurement is reached, further stepping in the same direction is not available.

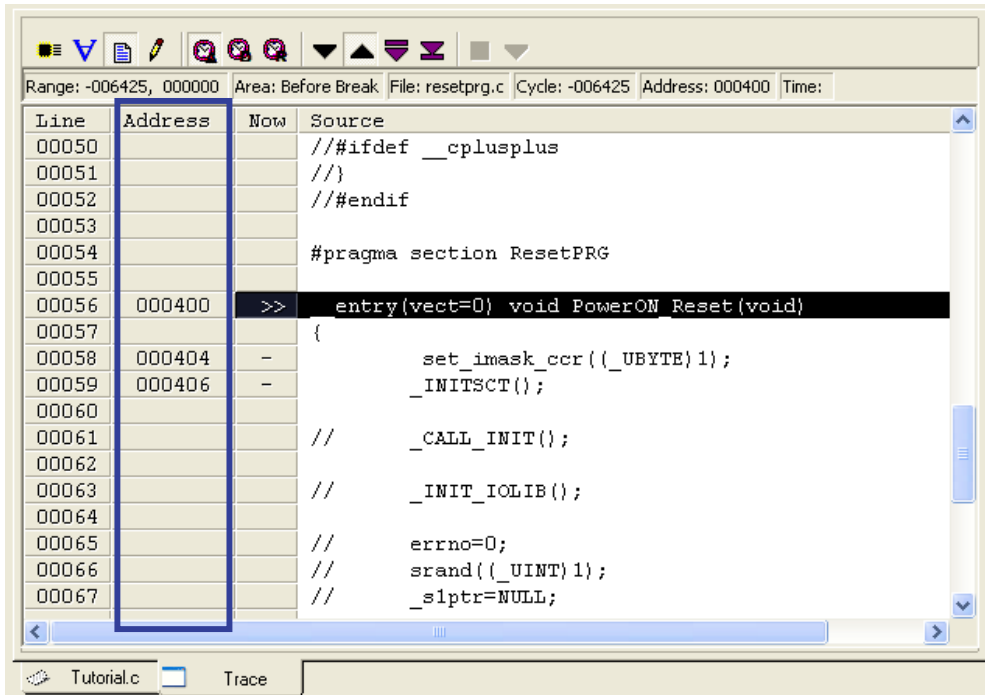


In the example above, where [Range] is from (-006425) to (000000), the following error message is displayed if stepping in the negative direction from (-006425) under [Cycle] is attempted.



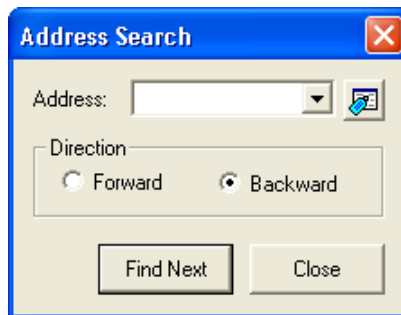
When stepping in the positive direction from (000000) under [Cycle] is attempted, the same error message is displayed.

(26) Double-clicking on [Address] in the [Trace] window produces a dialog box that allows searching for an address.

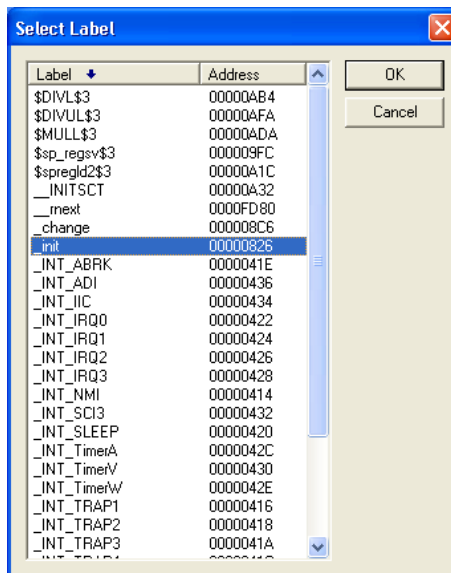


Double-clicking on any position within the column under [Address] has the same effect.

(27) The [Address Search] dialog box is used to search for an address in the specified direction.



The [Address] field can also be specified by clicking on the label-selection button to the right of the field and then using the [Label Select] dialog box.



5. Related Documents

The H8/300H Tiny compact emulator and High-performance Embedded Workshop provide many other useful functions that have not been mentioned in this document. Please refer to the following related documents for important information such as detailed specifications, technical information, and restrictions.

Documents Related to the H8/300H Tiny Compact Emulator:

- H8/300H Tiny Compact Emulator Debugger User's Manual
- H8/300H Tiny Compact Emulator Debugger Release Notes

Document Related to High-Performance Embedded Workshop

- High-performance Embedded Workshop User's Manual

Documents Related to CPU

- H8/3664 Group Hardware Manual
- H8/300H Series Programming Manual

Documents Related to H8S, H8/300 Series C/C++ Compiler Package

- Notes on Usage of the C/C++ Compiler Package for H8SX, H8S, H8 Family V.6.01 Release 02 and Corrections in the User's Manual
- H8S, H8/300 Series C/C++ Compiler, Assembler, Optimizing Linkage Editor User's Manual

Visit the following Renesas websites for information on this product:

Global site: <http://www.renesas.com/cpe>

Japanese site: <http://japan.renesas.com/cpe>

Renesas Website and Customer Support

Renesas Technology Website:

<http://www.renesas.com/>

Customer Support:

<http://www.renesas.com/inquiry>

Revision History

Rev.	Publication date	Revisions	
		Page	Description
1.00	Jul 09, 2007	-	First edition

Notes regarding these materials

1. This document is provided for reference purposes only so that Renesas customers may select the appropriate Renesas products for their use. Renesas neither makes warranties or representations with respect to the accuracy or completeness of the information contained in this document nor grants any license to any intellectual property rights or any other rights of Renesas or any third party with respect to the information in this document.
2. Renesas shall have no liability for damages or infringement of any intellectual property or other rights arising out of the use of any information in this document, including, but not limited to, product data, diagrams, charts, programs, algorithms, and application circuit examples.
3. You should not use the products or the technology described in this document for the purpose of military applications such as the development of weapons of mass destruction or for the purpose of any other military use. When exporting the products or technology described herein, you should follow the applicable export control laws and regulations, and procedures required by such laws and regulations.
4. All information included in this document such as product data, diagrams, charts, programs, algorithms, and application circuit examples, is current as of the date this document is issued. Such information, however, is subject to change without any prior notice. Before purchasing or using any Renesas products listed in this document, please confirm the latest product information with a Renesas sales office. Also, please pay regular and careful attention to additional and different information to be disclosed by Renesas such as that disclosed through our website. (<http://www.renesas.com>)
5. Renesas has used reasonable care in compiling the information included in this document, but Renesas assumes no liability whatsoever for any damages incurred as a result of errors or omissions in the information included in this document.
6. When using or otherwise relying on the information in this document, you should evaluate the information in light of the total system before deciding about the applicability of such information to the intended application. Renesas makes no representations, warranties or guaranties regarding the suitability of its products for any particular application and specifically disclaims any liability arising out of the application and use of the information in this document or Renesas products.
7. With the exception of products specified by Renesas as suitable for automobile applications, Renesas products are not designed, manufactured or tested for applications or otherwise in systems the failure or malfunction of which may cause a direct threat to human life or create a risk of human injury or which require especially high quality and reliability such as safety systems, or equipment or systems for transportation and traffic, healthcare, combustion control, aerospace and aeronautics, nuclear power, or undersea communication transmission. If you are considering the use of our products for such purposes, please contact a Renesas sales office beforehand. Renesas shall have no liability for damages arising out of the uses set forth above.
8. Notwithstanding the preceding paragraph, you should not use Renesas products for the purposes listed below:
 - 1) artificial life support devices or systems
 - 2) surgical implantations.
 - 3) healthcare intervention (e.g., excision, administration of medication, etc.)
 - 4) any other purposes that pose a direct threat to human life

Renesas shall have no liability for damages arising out of the uses set forth in the above and purchasers who elect to use Renesas products in any of the foregoing applications shall indemnify and hold harmless Renesas Technology Corp., its affiliated companies and their officers, directors, and employees against any and all damages arising out of such applications.
9. You should use the products described herein within the range specified by Renesas, especially with respect to the maximum rating, operating supply voltage range, movement power voltage range, heat radiation characteristics, installation and other product characteristics. Renesas shall have no liability for malfunctions or damages arising out of the use of Renesas products beyond such specified ranges.
10. Although Renesas endeavors to improve the quality and reliability of its products, IC products have specific characteristics such as the occurrence of failure at a certain rate and malfunctions under certain use conditions. Please be sure to implement safety measures to guard against the possibility of physical injury, and injury or damage caused by fire in the event of the failure of a Renesas product, such as safety design for hardware and software including but not limited to redundancy, fire control and malfunction prevention, appropriate treatment for aging degradation or any other applicable measures. Among others, since the evaluation of microcomputer software alone is very difficult, please evaluate the safety of the final products or system manufactured by you.
11. In case Renesas products listed in this document are detached from the products to which the Renesas products are attached or affixed, the risk of accident such as swallowing by infants and small children is very high. You should implement safety measures so that Renesas products may not be easily detached from your products. Renesas shall have no liability for damages arising out of such detachment.
12. You should not use the products or the technology described in this document for the purpose of military applications such as the development of weapons of mass destruction or for the purpose of any other military use. When exporting the products or technology described herein, you should follow the applicable export control laws and regulations, and procedures required by such laws and regulations.
13. Please contact a Renesas sales office if you have any questions regarding the information contained in this document, Renesas semiconductor products, or if you have any other inquiries.

(c) 2007. Renesas Technology Corp., All rights reserved.