

Driving Differential, Single-Ended, and/or Frequency Generator Crystal Inputs

Abstract

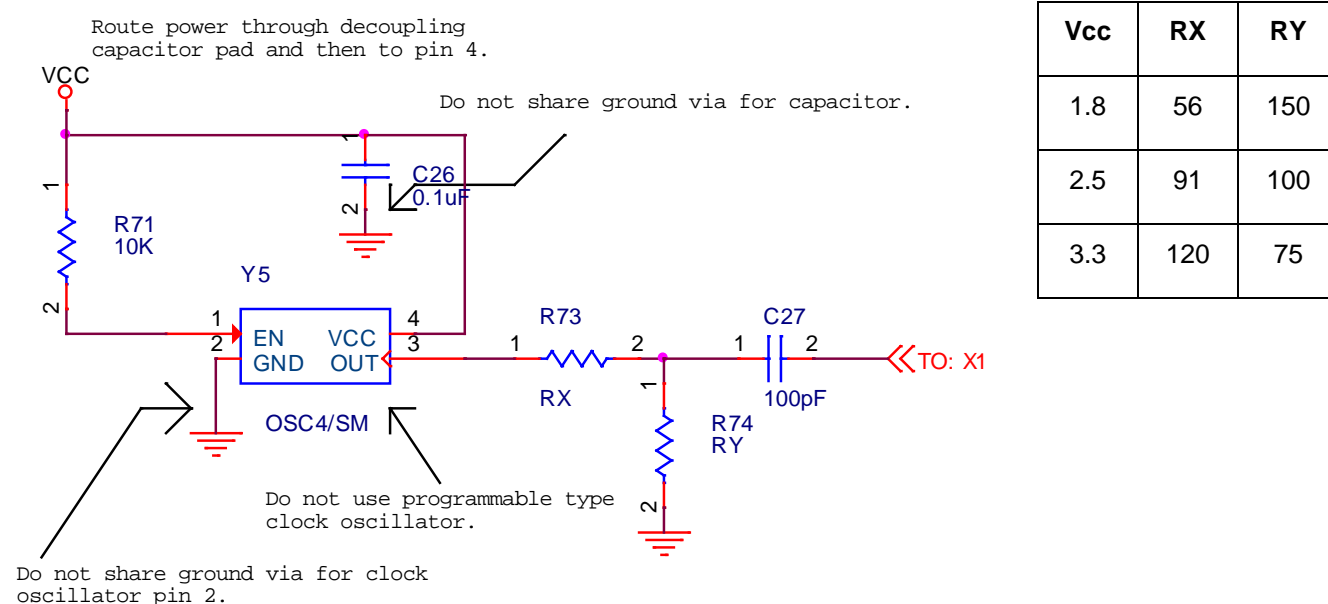
This application note describes various ways to drive the crystal input pin or a differential receiver. The input pin may be named X1 or Xin. If the input is AC coupled, the crystal oscillator circuit will bias the crystal input in its linear analog region. Directly driving Xin with a LVCMOS clock without a capacitor is allowed and is the most common way to connect a clock oscillator to Xin. The clock oscillator output buffer needs to match the impedance of the trace to the Xin pin. The common way to do this is with a series resistor. If this is not done there may be overshoot and undershoot on the input pin. If the clock is DC coupled it should not exceed Vdd of the input or undershoot below ground. If the clock is AC coupled the amplitude should be between 500mV and $V_{dd} \times 2/3$.

Contents

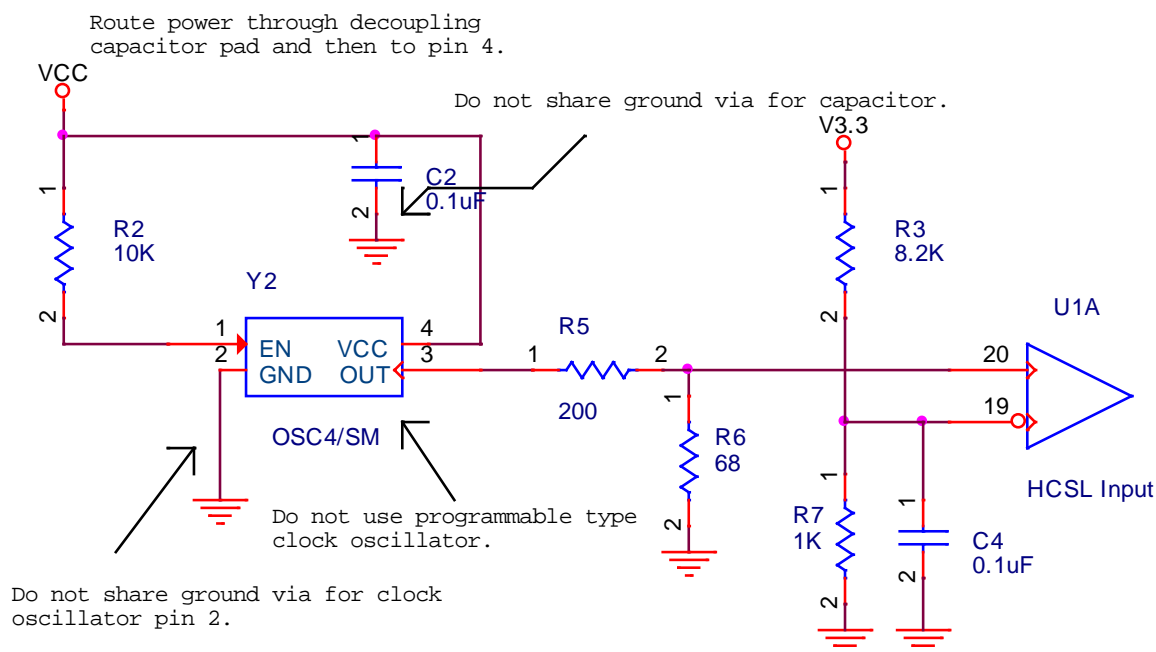
1. Common LVCMOS Clock Oscillator to Crystal Input.....	2
2. Clock Oscillator to Single-Ended HCSL Input	2
3. LVPECL Driving Crystal Input	3
4. SMA or BNC Input.....	3
5. LVDS Driving Crystal.....	3
6. Stuff Option for Coax Input or Crystal Input.....	4
7. HSCL Driving LVDS Input	4
8. LVDS Driving HCSL Input	5
9. Dual Layout for Crystal or Clock Oscillator	5
10. Cable-Connected HCSL Clock Termination.....	6
11. Level Shifting Single-Ended LVCMOS Input.....	6
12. Revision History	7

1. Common LVCMOS Clock Oscillator to Crystal Input

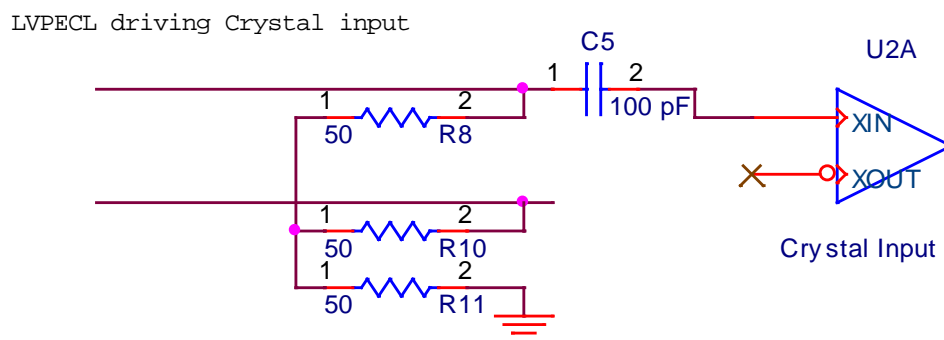
On some devices the maximum V_{High} voltage is 1.2 volts for X_{in} . Verify maximum V_{High} . A resistor voltage divider can be used to reduce V_{High} . If it is not needed R_X should be 33 ohms and R_Y not used.



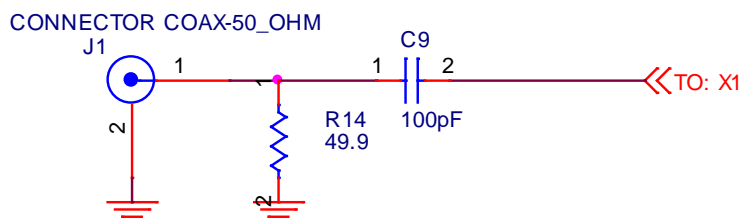
2. Clock Oscillator to Single-Ended HCSL Input



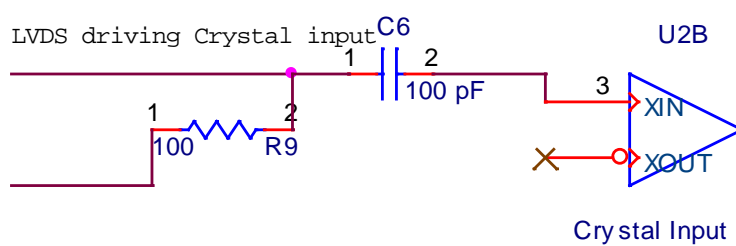
3. LVPECL Driving Crystal Input



4. SMA or BNC Input

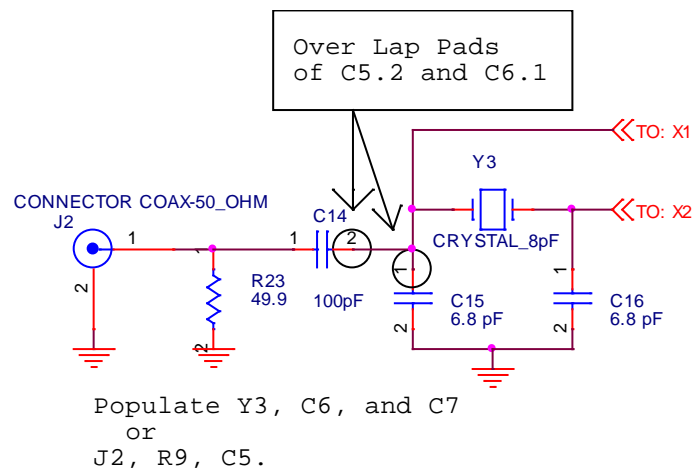


5. LVDS Driving Crystal



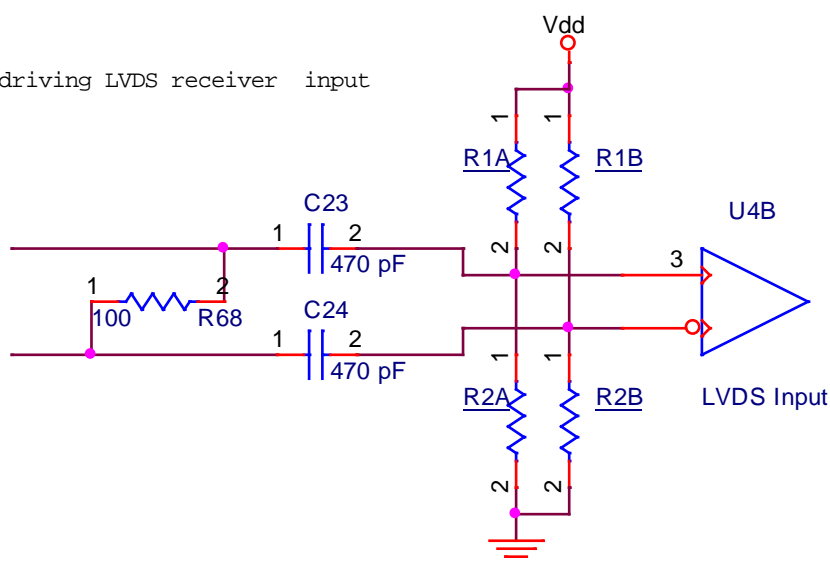
6. Stuff Option for Coax Input or Crystal Input

Crystal CL and load capacitors may be different.



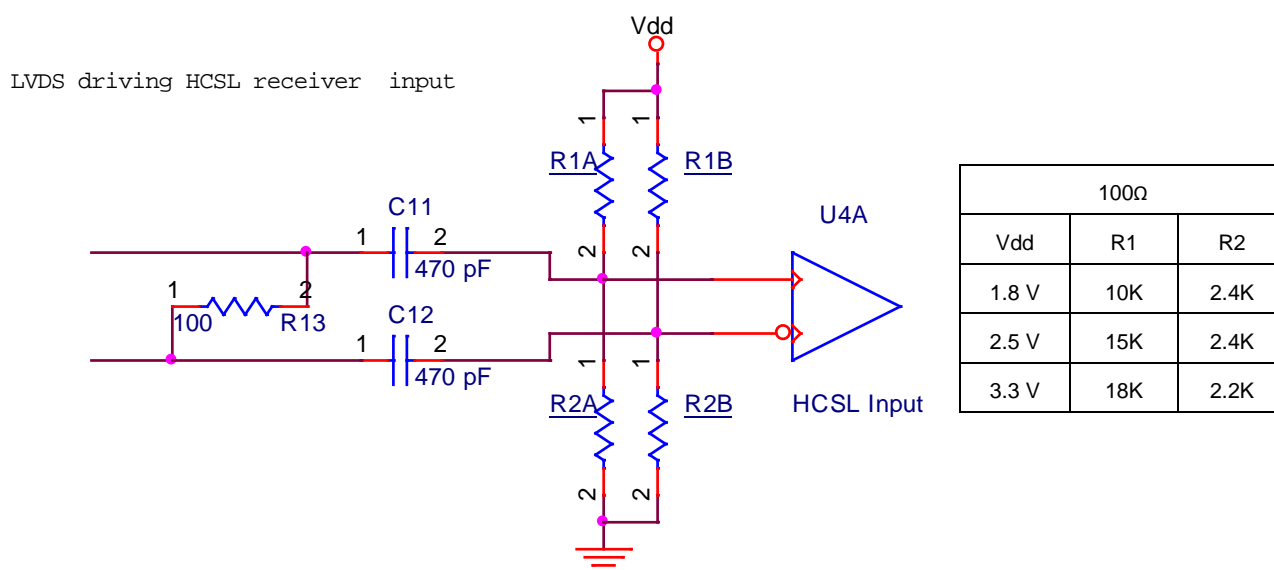
7. HSCL Driving LVDS Input

HSCL driving LVDS receiver input



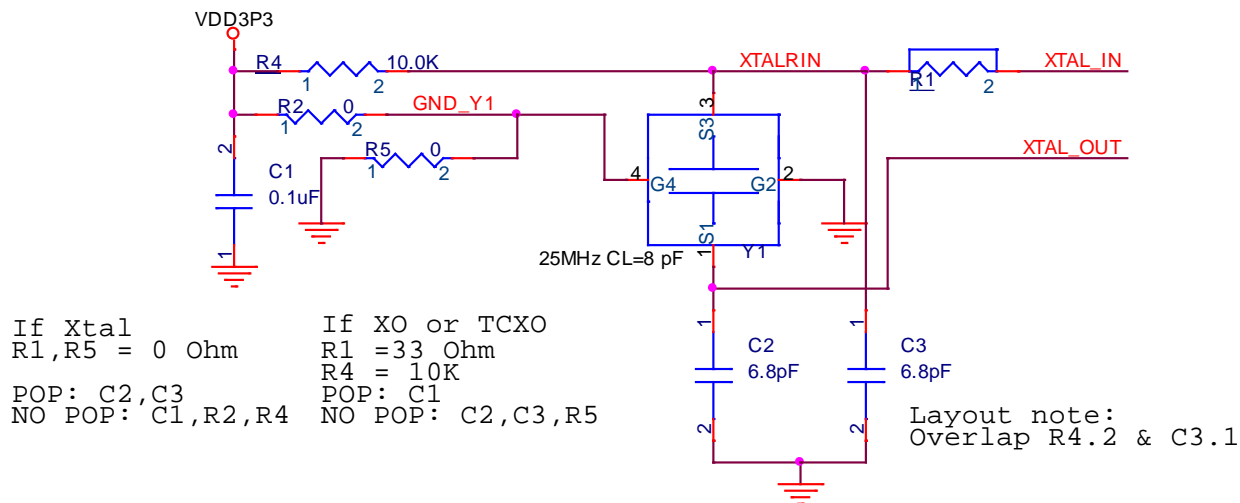
100Ω		
Vdd	R1	R2
1.8 V	3000	6800
2.5 V	4300	4300
3.3 V	5600	3300

8. LVDS Driving HCSL Input



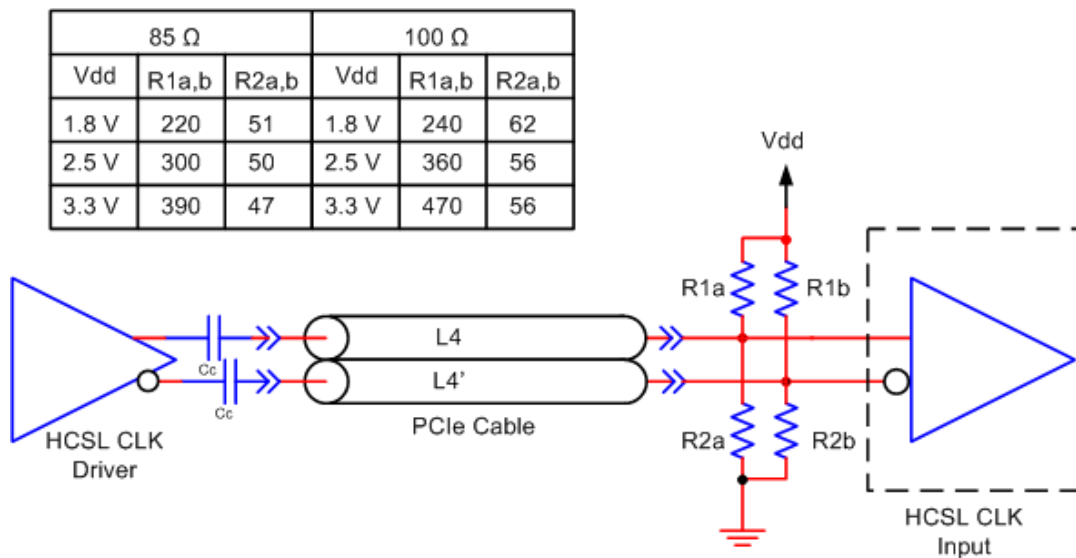
9. Dual Layout for Crystal or Clock Oscillator

Many clock generators have built-in crystal load capacitors. C2 and C3 are No Stuff in that application. TCXO or XO has square wave output. If TCXO sine wave output R1 = 100pF.

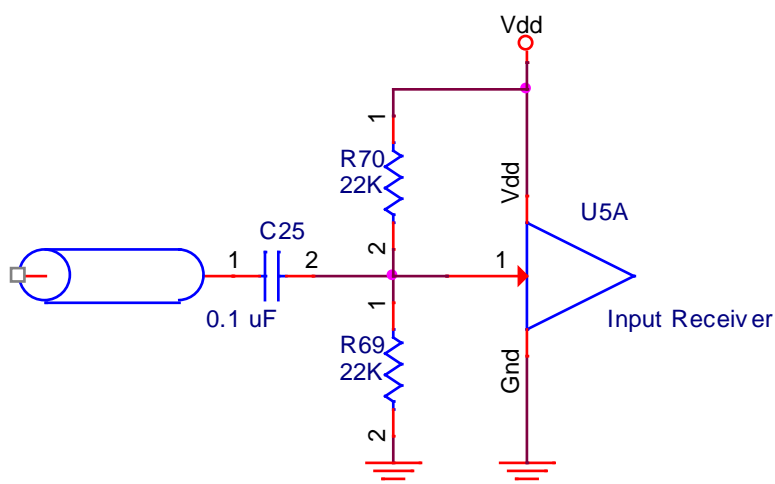


10. Cable-Connected HCSL Clock Termination

For more information, see the PCI Express External Cabling Specification.



11. Level Shifting Single-Ended LVCMOS Input



12. Revision History

Revision	Date	Description
1.0	Jun.18.20	Initial release.

IMPORTANT NOTICE AND DISCLAIMER

RENESAS ELECTRONICS CORPORATION AND ITS SUBSIDIARIES ("RENESAS") PROVIDES TECHNICAL SPECIFICATIONS AND RELIABILITY DATA (INCLUDING DATASHEETS), DESIGN RESOURCES (INCLUDING REFERENCE DESIGNS), APPLICATION OR OTHER DESIGN ADVICE, WEB TOOLS, SAFETY INFORMATION, AND OTHER RESOURCES "AS IS" AND WITH ALL FAULTS, AND DISCLAIMS ALL WARRANTIES, EXPRESS OR IMPLIED, INCLUDING, WITHOUT LIMITATION, ANY IMPLIED WARRANTIES OF MERCHANTABILITY, FITNESS FOR A PARTICULAR PURPOSE, OR NON-INFRINGEMENT OF THIRD-PARTY INTELLECTUAL PROPERTY RIGHTS.

These resources are intended for developers who are designing with Renesas products. You are solely responsible for (1) selecting the appropriate products for your application, (2) designing, validating, and testing your application, and (3) ensuring your application meets applicable standards, and any other safety, security, or other requirements. These resources are subject to change without notice. Renesas grants you permission to use these resources only to develop an application that uses Renesas products. Other reproduction or use of these resources is strictly prohibited. No license is granted to any other Renesas intellectual property or to any third-party intellectual property. Renesas disclaims responsibility for, and you will fully indemnify Renesas and its representatives against, any claims, damages, costs, losses, or liabilities arising from your use of these resources. Renesas' products are provided only subject to Renesas' Terms and Conditions of Sale or other applicable terms agreed to in writing. No use of any Renesas resources expands or otherwise alters any applicable warranties or warranty disclaimers for these products.

(Disclaimer Rev.1.01)

Corporate Headquarters

TOYOSU FORESIA, 3-2-24 Toyosu,
Koto-ku, Tokyo 135-0061, Japan
www.renesas.com

Contact Information

For further information on a product, technology, the most up-to-date version of a document, or your nearest sales office, please visit www.renesas.com/contact-us/.

Trademarks

Renesas and the Renesas logo are trademarks of Renesas Electronics Corporation. All trademarks and registered trademarks are the property of their respective owners.