

## Analog Front-End Reference Design for SGAS Sensors

The superior gas sensing capability of Renesas' SGAS line of solid-state gas sensors is best realized through a precision analog front-end circuit design that incorporates low-noise, high-accuracy heater control, and resistance measurement. The reference design shown in this application note corresponds to circuitry used in the electronic module included as part of the SMOD7xx Evaluation Kit, which can be used to evaluate Renesas' SGAS701, SGAS707, and SGAS711 sensors. For the reference design circuit and the locations of the components and signals discussed in the following sections, see Figure 1.

### 1. Circuit Description

Two voltage-controlled constant-current drivers separately drive the heater and sensor current. U1 and Q1-A force a voltage drop across R1 equal to  $V_{input}$ . The current  $i_{R1}$  through the R1-Q1A-R2 network is consequently fixed at a value proportional to  $V_{input}$  as calculated with Equation 1.

$$i_{R1} = i_{Q1-A} = i_{R2} = \frac{V_{input}}{R1} \quad \text{Equation 1}$$

The voltage drop across R2 is determined via Equation 2:

$$V_{R2} = i_{Q1-A} * R2 = \frac{V_{input}}{R1} * R2 \quad \text{Equation 2}$$

The voltage drop across R3, which is controlled by U2 and Q1-B, is the same as the drop across R2 as shown in Equation 3:

$$V_{R3} = \frac{V_{input}}{R1} * R2 = i_{R3} * R3 \quad \text{Equation 3}$$

Solving the right-side of the equality in Equation 3 for  $i_{R3}$  gives Equation 4:

$$i_{R3} = V_{input} * \frac{R2}{R1 * R3} \quad \text{Equation 4}$$

The R1 through R3 resistor values given in the reference design circuit bill of materials (BOM) listed in Table 1 produce the voltage-to-current relationship shown in Equation 5:

$$i_{R3} = V_{input} * 0.06032 \quad \text{Equation 5}$$

At  $V_{input} = 2.5V$ , the heater current is equal to approximately 151mA, which is enough to operate all SGAS7xx sensor types. Tests of the above circuit have shown current-drive accuracy of better than 1% for currents across a range of 5mA to 150mA.

The sensor current drive circuit shown in the top half of Figure 1 operates the same as the heater drive circuit, but within a much smaller current range set by R4 through R6. At  $V_{input} = 2.5V$ , the sensor current is equal to approximately 41.5μA. Applying this current to a gas sensor having a resistance of 50kΩ would result in a voltage of approximately 2.07V.

Designers using this reference design as the basis for modified circuits should note the following:

- Amplifiers operate at or near the supply rails in most cases, requiring use of rail-to-rail type amplifiers.
- Heater amplifiers must be voltage compliant with the heater-drive voltage, which can go as high as 7V.
- Currents (particularly in the sensor driver) are very small. Ensure that the input bias current is small enough that it does not significantly subtract from the targeted drive current.

# Analog Front-End Reference Design for SGAS Sensors Application Note

This reference design takes into consideration requirements for compatibility with MCU applications. Additional circuit elements (such as signal filtering and attenuation) are purposely not included in Figure 1 since design of these elements is specific to the MCU selection and other application-driven requirements.

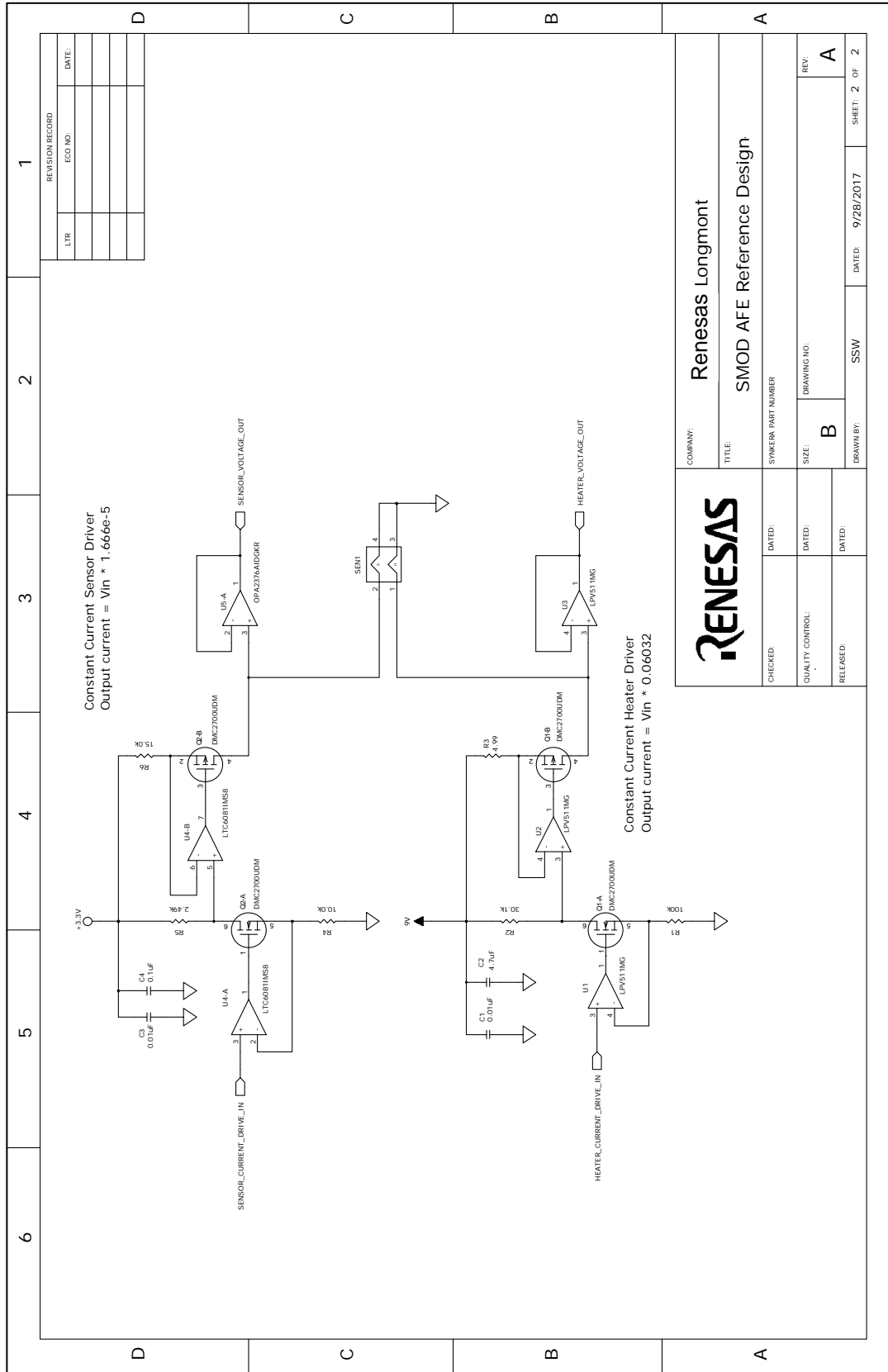


Figure 1. SMOD Analog Front End Reference Design

Table 1. Bill of Materials

Qty	Reference	Description	Manufacturer	Manufacturer P/N
2	C1, C3	Capacitor ceramic 0.01µF X7R 10V 0402 10%	Samsung	CL05B103KP5NNNC
1	C2	Capacitor ceramic 4.7µF X5R 10V 0805 10%	Samsung	CL21A475KPFNNNE
1	C4	Capacitor ceramic 0.1µF X5R 10V 0402 10%	Samsung	CL05A104KP5NNNC
2	Q1, Q2	MOSFET N/P-CH 20V SOT26	Diodes Inc.	DMC2700UDM-7
1	R1	Resistor 100k SMT 0402 1% 1/16W	Stackpole	RMCF0402FT100K
1	R2	Resistor 30.1k SMT 0402 1% 1/16W	Stackpole	RMCF0402FT30K1
1	R3	Resistor 4.99 SMT 0603 1% 1/10W	Stackpole	RMCF0603FT4R99
1	R4	Resistor 10.0k SMT 0402 1% 1/10W	Stackpole	RMCF0402FT10K0
1	R5	Resistor 2.49k SMT 0402 1% 1/10W	Stackpole	RMCF0402FT2K49
1	R6	Resistor 15.0k SMT 0402 1% 1/10W	Stackpole	RMCF0402FT15K0
1	SEN1	TO-39 pin sockets (4)	Mill-Max	917-93-104-41-005000
3	U1, U2, U3	IC OPAMP GP 25KHZ RRO SC70-5	TI	LPV511MG/NOPB
1	U4	IC OPAMP GP 3.5MHZ RRO 8MSOP	Linear Technology	LTC6081IMS8#PBF
1	U5	IC OPAMP GP 5.5MHZ RRO 8VSSOP	TI	OPA2376AIDGKR

## 2. Revision History

Revision	Date	Description
1.1	Mar 8, 2021	<ul style="list-style-type: none"> <li>▪ Completed minor content updates</li> <li>▪ Changed to Renesas branding</li> </ul>
1.0	Oct 19, 2017	Initial release.

## IMPORTANT NOTICE AND DISCLAIMER

RENESAS ELECTRONICS CORPORATION AND ITS SUBSIDIARIES (“RENESAS”) PROVIDES TECHNICAL SPECIFICATIONS AND RELIABILITY DATA (INCLUDING DATASHEETS), DESIGN RESOURCES (INCLUDING REFERENCE DESIGNS), APPLICATION OR OTHER DESIGN ADVICE, WEB TOOLS, SAFETY INFORMATION, AND OTHER RESOURCES “AS IS” AND WITH ALL FAULTS, AND DISCLAIMS ALL WARRANTIES, EXPRESS OR IMPLIED, INCLUDING, WITHOUT LIMITATION, ANY IMPLIED WARRANTIES OF MERCHANTABILITY, FITNESS FOR A PARTICULAR PURPOSE, OR NON-INFRINGEMENT OF THIRD PARTY INTELLECTUAL PROPERTY RIGHTS.

These resources are intended for developers skilled in the art designing with Renesas products. You are solely responsible for (1) selecting the appropriate products for your application, (2) designing, validating, and testing your application, and (3) ensuring your application meets applicable standards, and any other safety, security, or other requirements. These resources are subject to change without notice. Renesas grants you permission to use these resources only for development of an application that uses Renesas products. Other reproduction or use of these resources is strictly prohibited. No license is granted to any other Renesas intellectual property or to any third party intellectual property. Renesas disclaims responsibility for, and you will fully indemnify Renesas and its representatives against, any claims, damages, costs, losses, or liabilities arising out of your use of these resources. Renesas' products are provided only subject to Renesas' Terms and Conditions of Sale or other applicable terms agreed to in writing. No use of any Renesas resources expands or otherwise alters any applicable warranties or warranty disclaimers for these products.

(Rev.1.0 Mar 2020)

### Corporate Headquarters

TOYOSU FORESIA, 3-2-24 Toyosu,  
Koto-ku, Tokyo 135-0061, Japan  
[www.renesas.com](http://www.renesas.com)

### Contact Information

For further information on a product, technology, the most up-to-date version of a document, or your nearest sales office, please visit:  
[www.renesas.com/contact/](http://www.renesas.com/contact/)

### Trademarks

Renesas and the Renesas logo are trademarks of Renesas Electronics Corporation. All trademarks and registered trademarks are the property of their respective owners.