

## Introduction

This application note describes the performance and calibration functions of the 24-bit sigma-delta A/D converter integrated into S1JA.

## Target Device

Renesas Synergy S1JA MCU Group

## Conditions

Unless otherwise specified, typical data are based on  $VCC = AVCC0 = AVCC1 = 3.3\text{ V}$ ,  $VSS = AVSS0 = AVSS1 = 0\text{ V}$ ,  $T_a = 25\text{ }^\circ\text{C}$

## Contents

|  |    |
|--|----|
| 1. Overview.....   | 2  |
| 2. Utilizing Data Sheet Parametric Values.....                 | 3  |
| 2.1 Analog Inputs Parameters.....                              | 3  |
| 2.1.1 Range of Input Voltage in Differential Input Mode.....   | 3  |
| 2.1.2 Range of Input Voltage in Single-ended Input Mode.....   | 5  |
| 2.2 Timing Parameters.....                                     | 6  |
| 2.3 24-Bit Sigma-Delta A/D Converter Characteristics.....      | 8  |
| 2.3.1 Improve Accuracy by Averaging A/D Conversion Result..... | 13 |
| 2.4 Sensor Bias (SBIAS) Characteristics.....                   | 15 |
| 2.5 Operating and Standby Current.....                         | 16 |
| 3. Calibration Function.....                                   | 17 |
| 3.1 Internal Calibration Operation Mode.....                   | 17 |
| 3.2 External Calibration Operation Mode.....                   | 18 |
| 3.3 Recalibration Omitted.....                                 | 18 |
| 3.4 Calibration Control Flows.....                             | 18 |
| 3.4.1 Analog Power Supply Activation Flow.....                 | 19 |
| 3.4.2 Input Multiplexer Setting Flow.....                      | 20 |
| 3.4.3 Self-Diagnosis Flow of PGA Offset.....                   | 21 |
| 3.4.4 Disconnection Detection Assist Flow.....                 | 22 |
| 3.4.5 Internal Calibration Flow.....                           | 23 |
| 3.4.6 External Calibration Flow.....                           | 24 |
| 3.4.7 Recalibration Omitted Flow.....                          | 25 |
| Revision History.....  | 27 |

### 1. Overview

A 24-bit sigma-delta A/D converter with a programmable gain instrumentation amplifier is built into the S1JA MCU Group. The input mode can be selected as differential input mode or single-ended input mode for each channel. Signals from the input multiplexers pass through the programmable gain instrumentation amplifier (PGA) and enter the sigma-delta A/D converter. The A/D conversion results are filtered through the SINC3 digital filter and stored in an output register.

The 24-bit Sigma-Delta A/D Converter has a calibration function. Calibration allows high-precision A/D conversion by calculating the offset error correction value and gain error correction value under the conditions of use. Calibration must be performed when using the differential input mode of the 24-bit sigma-delta A/D converter for the first time after reset.

This application note explains the 24-bit sigma-delta A/D converter analog input and timing parameters, SNR and SINAD characteristics, AD conversion current consumption, and how to perform calibration.

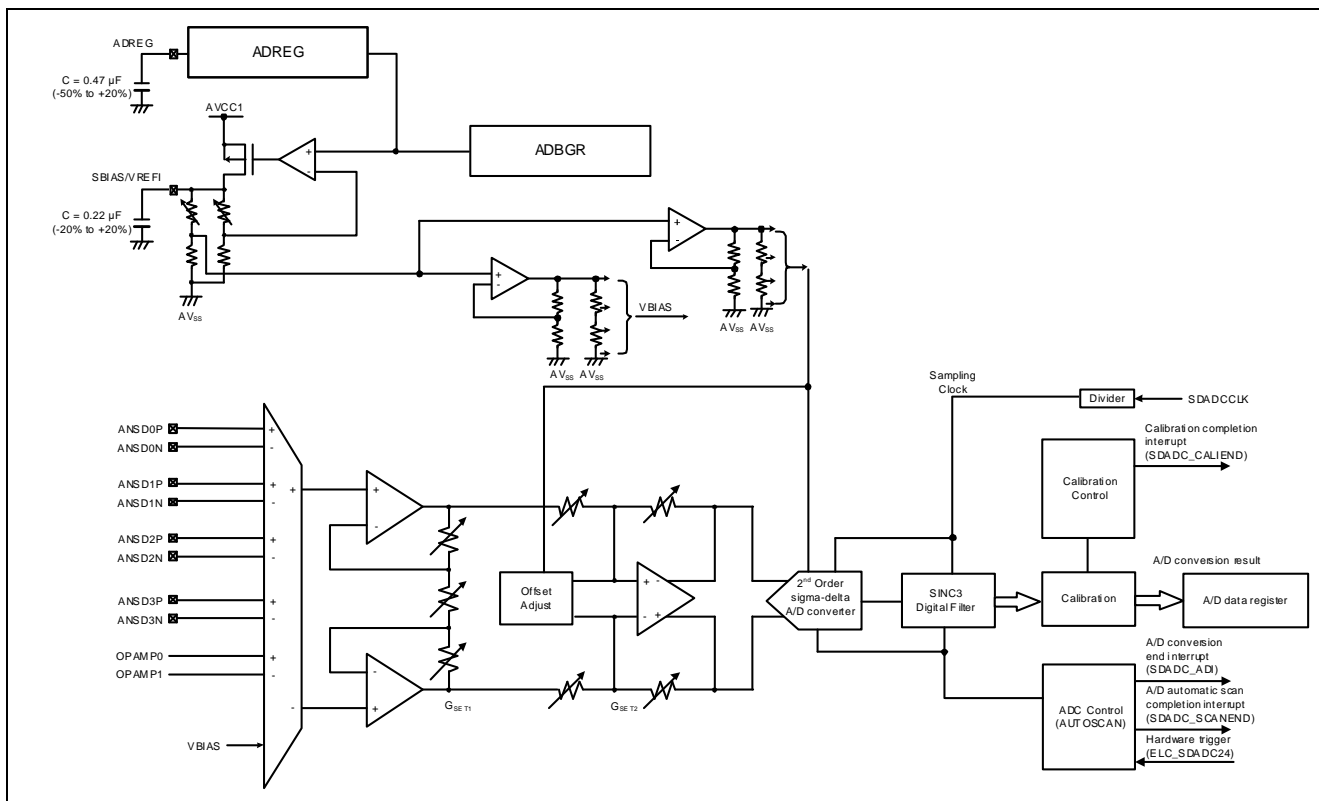


Figure 1 SDADC24 Block Diagram

Table 1 SDADC24 I/O Pins

| Pin name                           | I/O    | Function  |
|------------------------------------|--------|---|
| AVCC1                              | Input  | Analog block power supply pin                               |
| AVSS1                              | Input  | Analog block power supply ground pin                        |
| ADREG                              | I/O    | Power supply pins for PGA and the sigma-delta A/D converter |
| SBIAS/VREFI                        | Input  | External reference voltage input pin (VREFI)                |
|                                    | Output | Sensor Power supply pin (SBIAS)                             |
| ANSD0P to ANSD3P, ANSD0N to ANSD3N | Input  | Analog input pins   |

## 2. Utilizing Data Sheet Parametric Values

This chapter describes the electrical characteristics of the 24-Bit Sigma-Delta A/D Converter.

### 2.1 Analog Inputs Parameters

This section describes analog inputs. Sections 2.1.1 and 2.1.2 show the ranges of input voltage in differential input mode and single-ended input mode.

#### 2.1.1 Range of Input Voltage in Differential Input Mode

Table 2 shows analog input characteristics in differential input mode.

**Table 2 Analog Input Characteristics in Differential Input Mode**

Conditions:  $V_{CC} = AV_{CC0} = AV_{CC1} = 2.7$  to  $5.5$  V,  $V_{SS} = AV_{SS0} = AV_{SS1} = 0$  V

| Parameter                               |                                  | Symbol      | Min                                  | Typ                   | Max                                  | Unit | Test Conditions  |
|---|----------------------------------|-------------|--------------------------------------|-----------------------|--------------------------------------|------|--|
| Full-scale range                        |                                  | $F_{SR}$    | -                                    | $\pm 0.8 / G_{TOTAL}$ | -                                    | V    | -  |
| Analog input in differential input mode | Differential input voltage range | $V_{ID}$    | $-0.8/G_{TOTAL}$                     | -                     | $0.8/G_{TOTAL}$                      | V    | $V_{ID} = ANSDnP - ANSDnN$ , or $AMP00 - AMP10$ ( $n = 0$ to $3$ ), $d_{OFR} = 0$ mV |
|   | Input voltage range              | $V_I$       | 0.2                                  | -                     | 1.8                                  | V    | $V_I = ANSDnP$ , $ANSDnN$ , $AMP00$ , or $AMP10$ ( $n = 0$ to $3$ )                  |
|   | Common mode Input voltage range  | $V_{COM}$   | $0.2 + ( V_{ID}  \times G_{SET1})/2$ | 1.0                   | $1.8 - ( V_{ID}  \times G_{SET1})/2$ | V    | $d_{OFR} = 0$ mV   |
| Input absolute current                  |                                  | $I_{IN}$    | -                                    | 2                     | -                                    | nA   | $V_I = 1$ V  |
| Input offset current                    |                                  | $I_{INOFR}$ | -                                    | 1                     | -                                    | nA   | $V_{ID} = 0$ V, $V_{COM} = 1$ V  |
| Input impedance                         |                                  | $Z_{IN}$    | -                                    | 500                   | -                                    | Mohm | $V_{ID} = 1$ V, $V_{COM} = 1$ V  |

In differential input mode, the multiplication factor of gain ( $G_{TOTAL}$ ) can be changed from  $\times 1$  to  $\times 32$  by a combination of the gain of the previous-stage amplifier ( $G_{SET1}$ ) and the gain of the next-stage amplifier ( $G_{SET2}$ ).

In the expressions that follow,  $V_{SIG}$  is the differential voltage amplitude,  $V_{COM}$  is the in-phase input voltage, and  $d_{OFR}$  is the value calculated by converting the output voltage of the D/A converter for offset voltage adjustment into input voltage. The range of input voltage for one amplifier stage is from 0.2 V to 1.8 V. Therefore, signals that pass through the previous-stage amplifier of the instrumentation amplifier and enter to the next-stage amplifier must satisfy the condition indicated by Expression 1.

In addition, signals that pass through the previous-stage amplifier of the instrumentation amplifier and exit from the next stage amplifier must satisfy the condition indicated by Expression 2.

Expression 1:

$$0.2 \text{ V} + \frac{|V_{SIG}| \times G_{SET1}}{2} \leq V_{COM} \leq 1.8 \text{ V} - \frac{|V_{SIG}| \times G_{SET1}}{2}$$

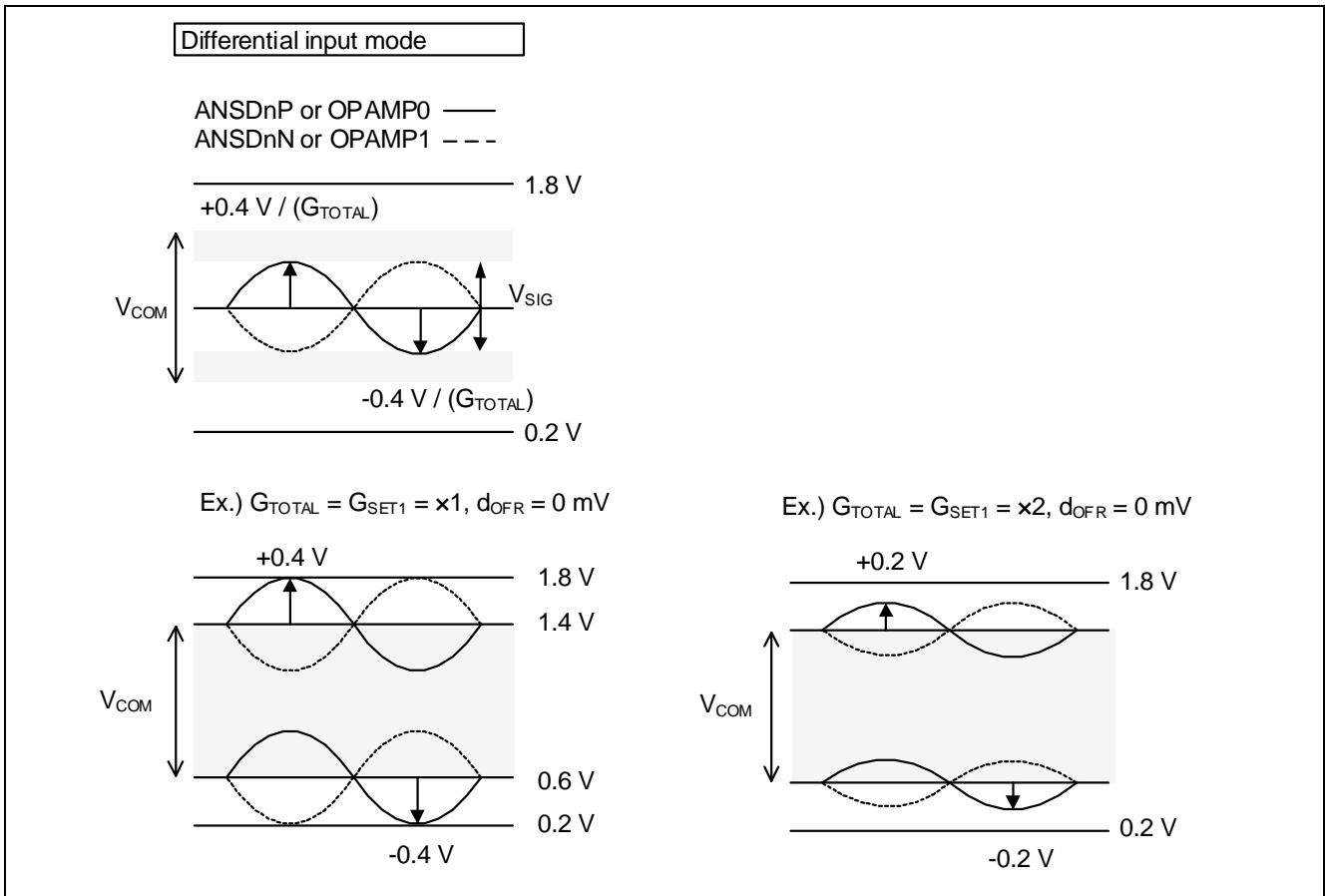
Expression 2:

$$-0.8 \text{ V} \leq (V_{SIG} + d_{OFR}) \times G_{TOTAL} \leq 0.8 \text{ V}$$

When  $d_{OFR} = 0$  mV, the input signal can be equal to the full-scale differential input voltage at full scale. When  $V_{SIG} = V_{ID}$  (full-scale differential input voltage),  $V_{COM}$  can be represented using Expression 3.

Expression 3:

$$0.2\text{ V} + \frac{|V_{ID}| \times G_{SET1}}{2} \leq V_{COM} \leq 1.8\text{ V} - \frac{|V_{ID}| \times G_{SET1}}{2}$$



**Figure 2 Range of Input Voltage in Differential Input Mode**

Figure 3 shows the transition of the amplitude of differential input voltage for each channel of the programmable gain instrumentation amplifier (PGA).

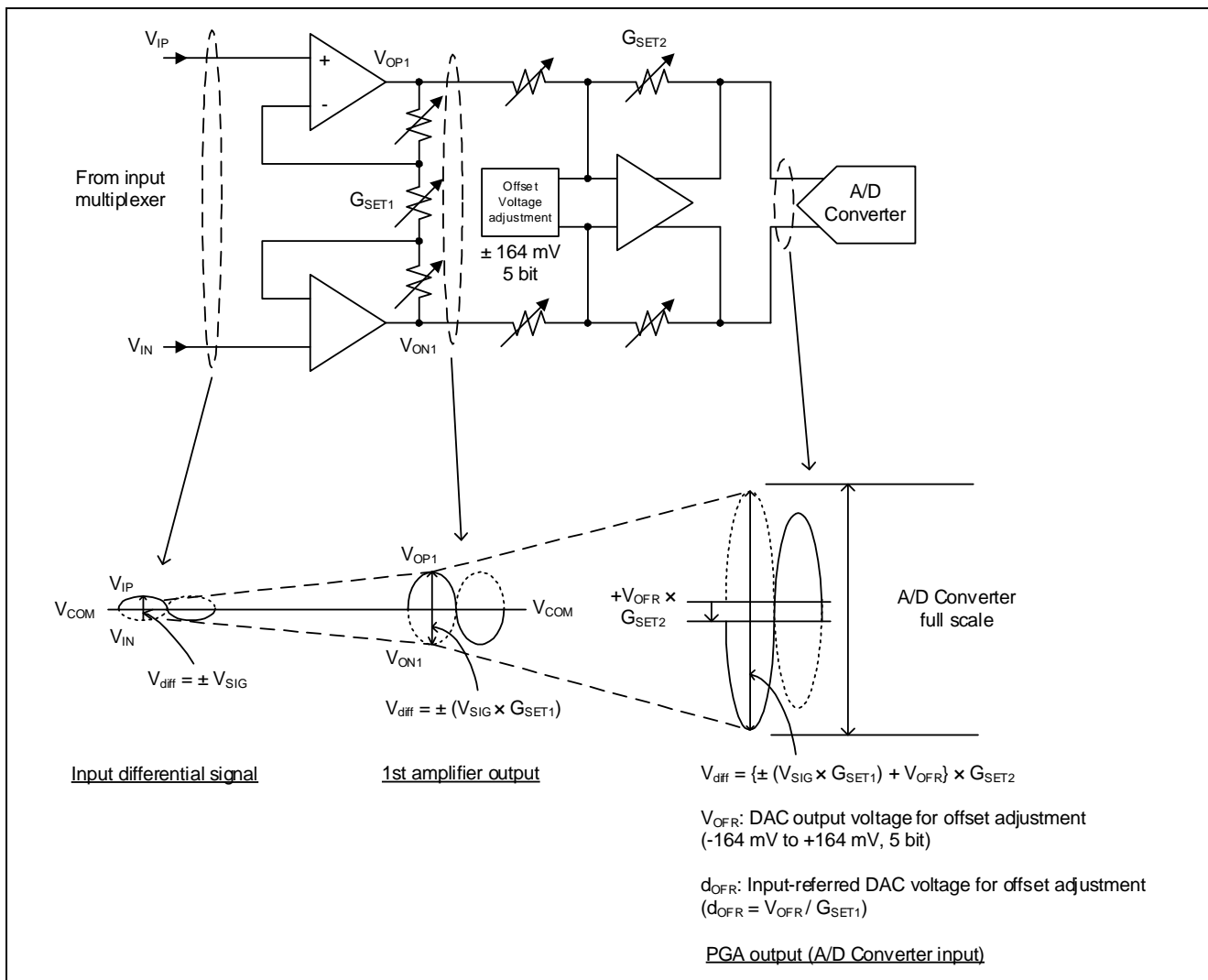


Figure 3 Transition of Differential Input Voltage for Each Channel of the PGA

### 2.1.2 Range of Input Voltage in Single-ended Input Mode

Table 3 shows the analog input characteristics in single-ended input mode.

Table 3 Analog Input Characteristics in Single-ended Input Mode

Conditions:  $V_{CC} = AV_{CC0} = AV_{CC1} = 2.7$  to  $5.5$  V,  $V_{SS} = AV_{SS0} = AV_{SS1} = 0$  V

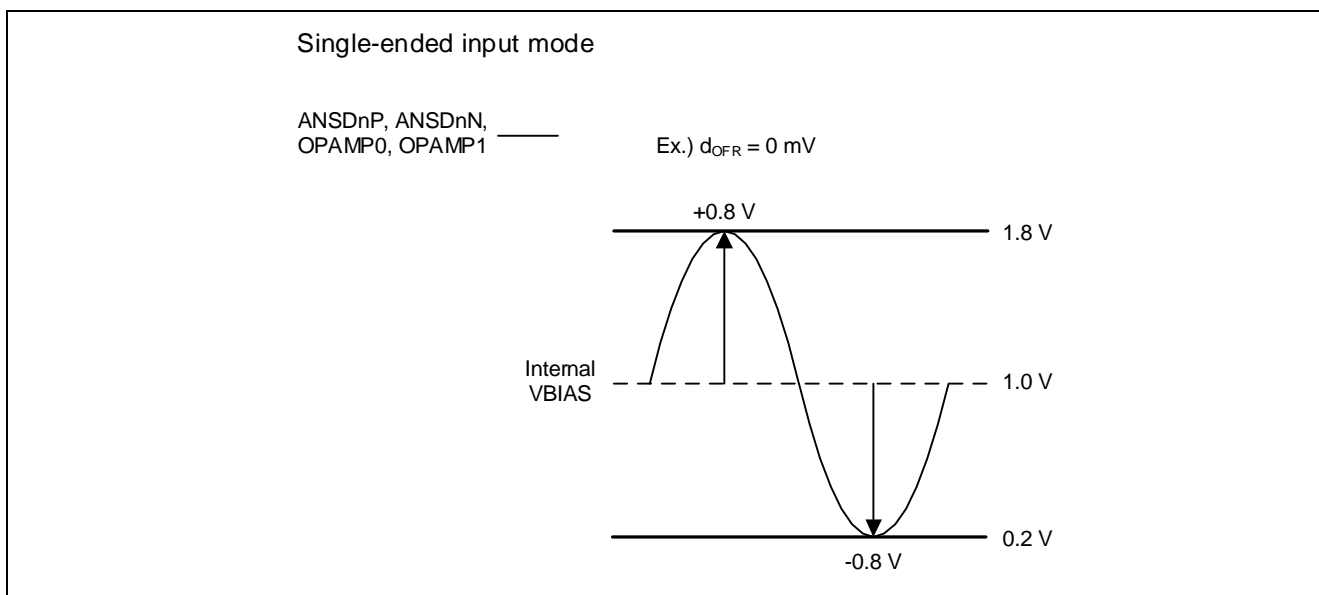
| Parameter                               | Symbol                       | Min | Typ | Max | Unit | Test Conditions   |
|---|------------------------------|-----|-----|-----|------|---|
| Analog Input in single-ended input mode | Input voltage range<br>$V_I$ | 0.2 | -   | 1.8 | V    | $V_I = ANSDnP, ANSDnN, AMP00, \text{ or } AMP10$ ( $n = 0$ to $3$ ), $V_{COM} = 1.0$ V, $d_{OFR} = 0$ mV, $G_{SET1} = 1, G_{SET2} = 1, OSR = 256$ |
| Input absolute current                  | $I_{IN}$                     | -   | 2   | -   | nA   | $V_I = 1$ V   |

The single-ended input mode supports only  $d_{OFR} = 0$  mV,  $G_{SET1} = 1, G_{SET2} = 1$ , and Oversampling Ratio (OSR) = 256.

In positive-side single-ended input mode, the signal from the input multiplexer is connected to the non-inverting input of the PGA. The bias voltage ( $V_{BIAS} = 1.0$  V (typical)) is connected to the inverting input of the PGA to provide a reference voltage. In negative-side single-ended input mode, the signal from the input multiplexer is connected to the inverting input of the PGA, and the internal bias voltage is connected to the non-inverting input of the PGA. The differential signal output is in the range from 0.2 V to 1.8 V.

Range of the input voltage ( $V_I$ ) must satisfy the following expression:

$$0.2\text{ V} \leq V_I \leq 1.8\text{ V}$$



**Figure 4 Range of Input Voltage in Single-ended Input Mode**

## 2.2 Timing Parameters

Table 4 shows the timing parameters of the 24-Bit Sigma-Delta A/D Converter.

**Table 4 Timing Parameters of 24-Bit Sigma-Delta A/D Converter**

Conditions:  $V_{CC} = AV_{CC0} = AV_{CC1} = 2.7\text{ to }5.5\text{ V}$ ,  $V_{SS} = AV_{SS0} = AV_{SS1} = 0\text{ V}$

| Parameter               | Symbol             | Min      | Typ   | Max      | Unit | Test Conditions               |
|-------------------------|--------------------|----------|-------|----------|------|-------------------------------|
| Over sampling frequency | $F_{\text{OS}}$    | -        | 1     | -        | MHz  | Normal A/D conversion mode    |
|                         |                    | -        | 0.125 | -        |      | Low-power A/D conversion mode |
| Output data rate        | $f_{\text{DATA1}}$ | 0.48828  | -     | 15.625   | ksps | Normal A/D conversion mode    |
|                         | $f_{\text{DATA2}}$ | 61.03615 | -     | 1953.125 | sps  | Low-power A/D conversion mode |

A/D conversion is performed by the SDADC24 reference clock generated by the SDADCCLK. Set the SDADC24.STC1.CLKDIV[3:0] bits so that the SDADC24 reference clock is output at 4 MHz. In normal A/D conversion mode, the oversampling frequency is 1 MHz. In low-power A/D conversion mode, the oversampling frequency is 0.125 MHz.

The oversampling ratio can be selected from 64, 128, 256, 512, 1024, or 2048 by SDADC24.PGACn.PGAOSR[2:0] bits ( $n = 0$  to 4).

The equation for calculating the output data rate is as follows:

$$\text{Output data rate (sps)} = \text{Over sampling frequency} / \text{Oversampling ratio}$$

Down sampling of the A/D conversion result is performed by the SINC3 digital filter.

Figure 5 shows a block diagram of the digital filter. Three accumulators and three differentiators are connected in a cascade format. For the A/D converter to become stable, the required settling time must be satisfied. Table 5 shows settling time 1 and settling time 2, which are defined as follows:

- Settling time 1 — The time from ADC2.SDADST bit rising to A/D conversion end interrupt. See settling time 1 in Figure 6.
- Settling time 2 — The time from the last A/D conversion end interrupt before channel switching to the first A/D conversion end interrupt after channel switching. See settling time 2 in Figure 6.

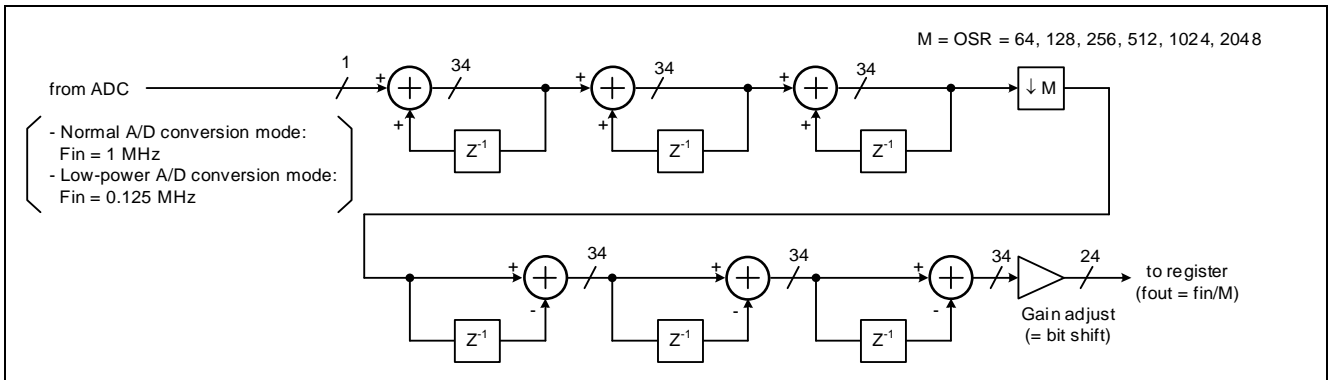


Figure 5 Digital Filter Block Diagram

Table 5 Settling Time for Each Operation Mode

Conditions: VCC = AVCC0 = AVCC1 = 2.7 to 5.5 V, VSS = AVSS0 = AVSS1 = 0 V

| Item              |     | Normal A/D Conversion Mode                         | Low-power A/D Conversion Mode                       |
|-------------------|-----|--|---|
| Settling time 1   | Min | 3T + 129 μs + 2PCLKB<br>+ 9 ADC reference clock*1  | 3T + 1032 μs + 2PCLKB<br>+ 9 ADC reference clock*1  |
|                   | Max | 3T + 129 μs + 3PCLKB<br>+ 10 ADC reference clock*1 | 3T + 1032 μs + 3PCLKB<br>+ 10 ADC reference clock*1 |
| Settling time 2*2 | Min | 3T + 129 μs - 1PCLKB                               | 3T + 1032 μs - 1PCLKB                               |
|                   | Max | 3T + 129 μs + 1PCLKB                               | 3T + 1032 μs + 1PCLKB                               |

Note: The settling time is automatically generated by the AUTOSCAN built-in sequencer.

3T is the time that is 3 times as long as the sampling time (3 × 1 / fout).

Notes: 1. Normal A/D conversion mode: 4 MHz, low-power A/D conversion mode: 500 kHz.

2. Since the A/D converter and the control circuit are asynchronous, a variation of ± 1PCLKB occurs at the interrupt output timing. There is no variation in the A/D conversion interval, and it is executed at equal intervals.

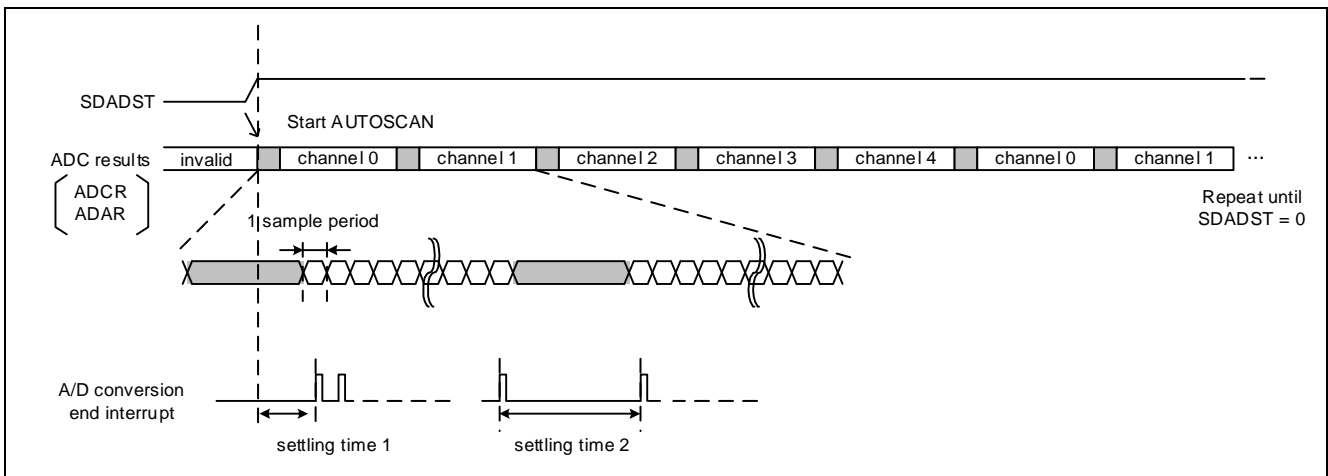


Figure 6 AUTOSCAN Sequence

### 2.3 24-Bit Sigma-Delta A/D Converter Characteristics

Table 6 shows SNR, SINAD, and ENOB characteristics evaluation results of the 24-Bit Sigma-Delta A/D Converter.

The SNR and SINAD are very important in many applications because they describe the smallest input signal that the converter can resolve. In closed loop systems, detecting small changes in input signals allows better control loop performance.

SNR: Signal-to-noise ratio (dB)  
The RMS signal level to the total RMS noise

SINAD: Signal-to-noise and distortion (dB)  
The RMS level of input signal/sum RMS value of all noise and distortion excluding DC

ENOB: Effective number of bits  
 $ENOB = (SINAD - 1.76 \text{ dB}) / 6.02 \text{ dB}$

ENOB (RMS): Effective Resolution  
 $ENOB \text{ (RMS)} = \log_2 (V_{Fullscale} / Noise_{RMS})$   
Noise\_rms is input-referred noise at  $V_{ID} = 0 \text{ V}$ .  $V_{Fullscale}$  is peak-to-peak value of  $F_{SR}$ .

**Table 6 SNR, SINAD, and ENOB Evaluation Results of 24-Bit Sigma-Delta A/D Converter**

Conditions:  $VCC = AVCC0 = AVCC1 = 3.3 \text{ V}$ ,  $VSS = AVSS0 = AVSS1 = 0 \text{ V}$ ,  $V_{COM} = 1.0 \text{ V}$ . The electrical specifications are applied at differential input mode, external clock input used,  $F_{OS} = 1 \text{ MHz}$ ,  $d_{OFR} = 0 \text{ mV}$ , unless otherwise specified.

| Parameter                                       | Symbol     | Typ   | Unit  | Test Conditions   |            |      |    |   |           |
|---|------------|---|---|---|------------|------|----|---|-----------|
| Signal to Noise Ratio<br>$V_{ID} = 0 \text{ V}$ | SNR        | 76.0  | dB  | $G_{SET1} = 1, G_{SET2} = 1,$<br>$PGACn.PGA AVE[1:0] = 00b \text{ or } 01b$ | OSR = 64   |      |    |   |           |
|   |            | 85.1  |   |   | OSR = 128  |      |    |   |           |
|   |            | 89.1  |   |   | OSR = 256  |      |    |   |           |
|   |            | 92.2  |   |   | OSR = 512  |      |    |   |           |
|   |            | 95.2  |   |   | OSR = 1024 |      |    |   |           |
|   |            | 98.2  |   |   | OSR = 2048 |      |    |   |           |
|   | 73.1       | dB  | $G_{SET1} = 8, G_{SET2} = 4,$<br>$PGACn.PGA AVE[1:0] = 00b \text{ or } 01b$ | OSR = 64  |            |      |    |   |           |
|   |            |   |   | 78.2  | OSR = 128  |      |    |   |           |
|   |            |   |   | 81.3  | OSR = 256  |      |    |   |           |
|   |            |   |   | 84.2  | OSR = 512  |      |    |   |           |
|   |            |   |   | 87.2  | OSR = 1024 |      |    |   |           |
|   |            |   |   | 89.8  | OSR = 2048 |      |    |   |           |
|   |            |   |   | Signal to Noise and Distortion Ratio<br>$f_{in} = 83 \text{ Hz}$            | SINAD      | 74.4 | dB | $G_{SET1} = 1, G_{SET2} = 1,$<br>$PGACn.PGA AVE[1:0] = 00b \text{ or } 01b$ | OSR = 64  |
|   |            |   |   |   |            | 84.1 |    |   | OSR = 128 |
| 87.8  | OSR = 256  |   |   |   |            |      |    |   |           |
| 90.1  | OSR = 512  |   |   |   |            |      |    |   |           |
| 91.7  | OSR = 1024 |   |   |   |            |      |    |   |           |
| 93.0  | OSR = 2048 |   |   |   |            |      |    |   |           |
| 72.2  | dB         | $G_{SET1} = 8, G_{SET2} = 4,$<br>$PGACn.PGA AVE[1:0] = 00b \text{ or } 01b$ | OSR = 64  |   |            |      |    |   |           |
|   |            |   | 77.9  |   | OSR = 128  |      |    |   |           |
|   |            |   | 81.0  |   | OSR = 256  |      |    |   |           |
|   |            |   | 83.7  |   | OSR = 512  |      |    |   |           |
|   |            |   | 86.1  |   | OSR = 1024 |      |    |   |           |
|   |            |   | 87.7  |   | OSR = 2048 |      |    |   |           |



| Parameter  | Symbol     | Typ  | Unit  | Test Conditions   |            |      |     |   |           |
|--|------------|--|---|---|------------|------|-----|---|-----------|
| Effective number of bits<br>$f_{in} = 83 \text{ Hz}$ | ENOB       | 12.1   | bit   | $G_{SET1} = 1, G_{SET2} = 1,$<br>$PGACn.PGA_{AVE}[1:0] = 00b \text{ or } 01b$ | OSR = 64   |      |     |   |           |
|  |            | 13.7   |   |   | OSR = 128  |      |     |   |           |
|  |            | 14.3   |   |   | OSR = 256  |      |     |   |           |
|  |            | 14.7   |   |   | OSR = 512  |      |     |   |           |
|  |            | 14.9   |   |   | OSR = 1024 |      |     |   |           |
|  |            | 15.2   |   |   | OSR = 2048 |      |     |   |           |
|  | 11.7       | bit  | $G_{SET1} = 8, G_{SET2} = 4,$<br>$PGACn.PGA_{AVE}[1:0] = 00b \text{ or } 01b$ | OSR = 64  |            |      |     |   |           |
|  |            |  |   | 12.6  | OSR = 128  |      |     |   |           |
|  |            |  |   | 13.2  | OSR = 256  |      |     |   |           |
|  |            |  |   | 13.6  | OSR = 512  |      |     |   |           |
|  |            |  |   | 14.0  | OSR = 1024 |      |     |   |           |
|  |            |  |   | 14.3  | OSR = 2048 |      |     |   |           |
|  |            |  |   | Effective Resolution  | ENOB (RMS) | 14.1 | bit | $G_{SET1} = 1, G_{SET2} = 1,$<br>$PGACn.PGA_{AVE}[1:0] = 00b \text{ or } 01b,$<br>$V_{fullscale} = 1.6 \text{ V}$ | OSR = 64  |
|  |            |  |   |   |            | 15.6 |     |   | OSR = 128 |
| 16.3   | OSR = 256  |  |   |   |            |      |     |   |           |
| 16.8   | OSR = 512  |  |   |   |            |      |     |   |           |
| 17.3   | OSR = 1024 |  |   |   |            |      |     |   |           |
| 17.8   | OSR = 2048 |  |   |   |            |      |     |   |           |
| 13.6   | bit        | $G_{SET1} = 8, G_{SET2} = 4,$<br>$PGACn.PGA_{AVE}[1:0] = 00b \text{ or } 01b,$<br>$V_{fullscale} = 0.05 \text{ V}$ | OSR = 64  |   |            |      |     |   |           |
|  |            |  | 14.5  |   | OSR = 128  |      |     |   |           |
|  |            |  | 15.0  |   | OSR = 256  |      |     |   |           |
|  |            |  | 15.5  |   | OSR = 512  |      |     |   |           |
| 16.0   | OSR = 1024 |  |   |   |            |      |     |   |           |
| 16.4   | OSR = 2048 |  |   |   |            |      |     |   |           |

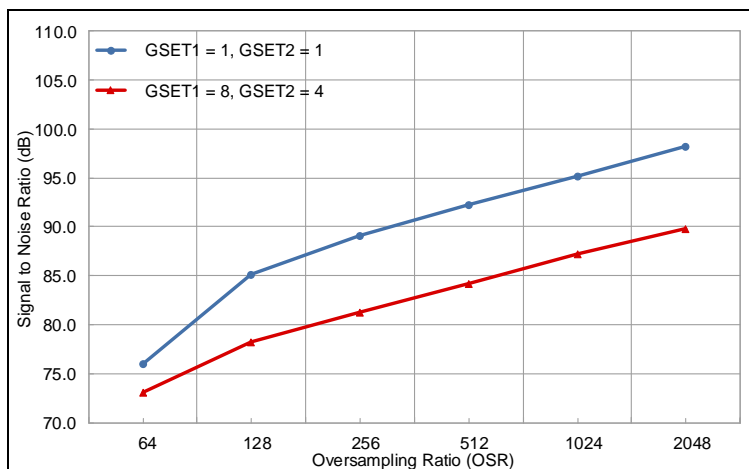


Figure 7 SNR versus OSR

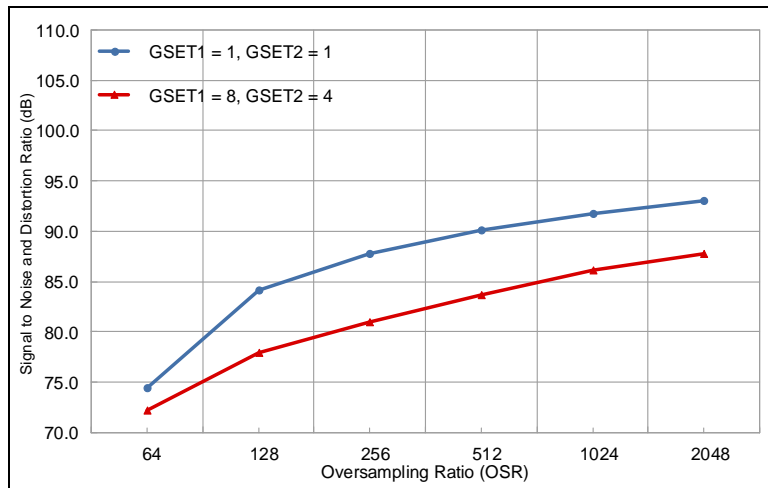


Figure 8 SINAD versus OSR

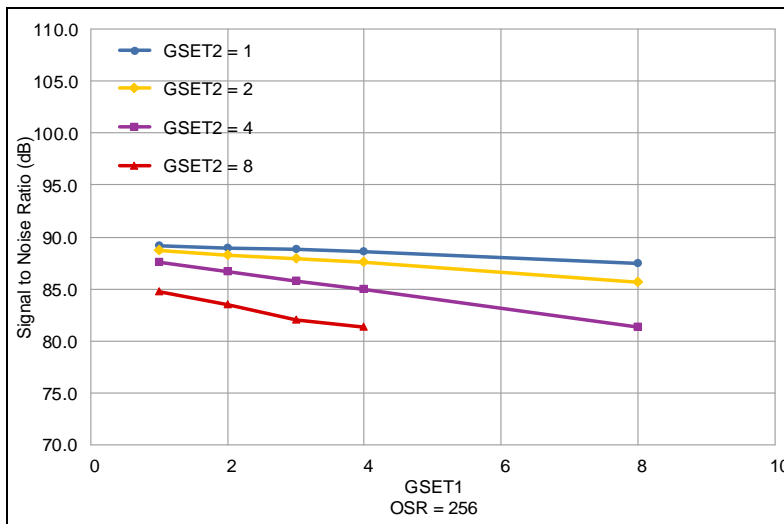


Figure 9 Dependence of SNR on G<sub>SET1</sub>

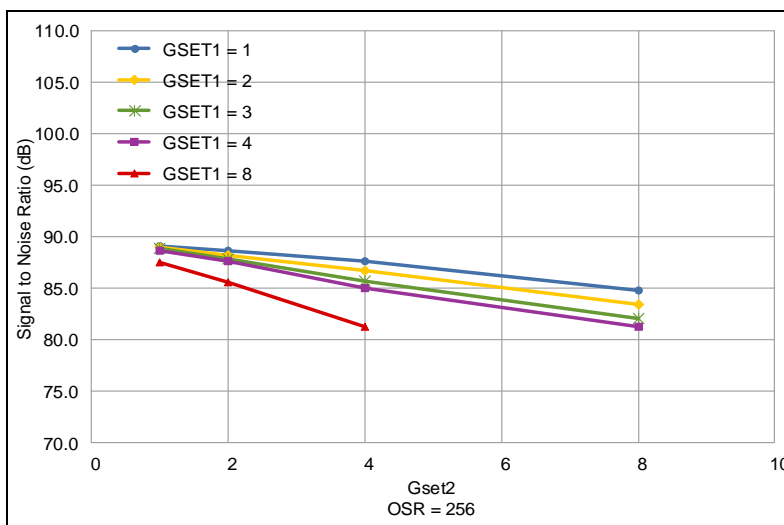


Figure 10 Dependence of SNR on G<sub>SET2</sub>

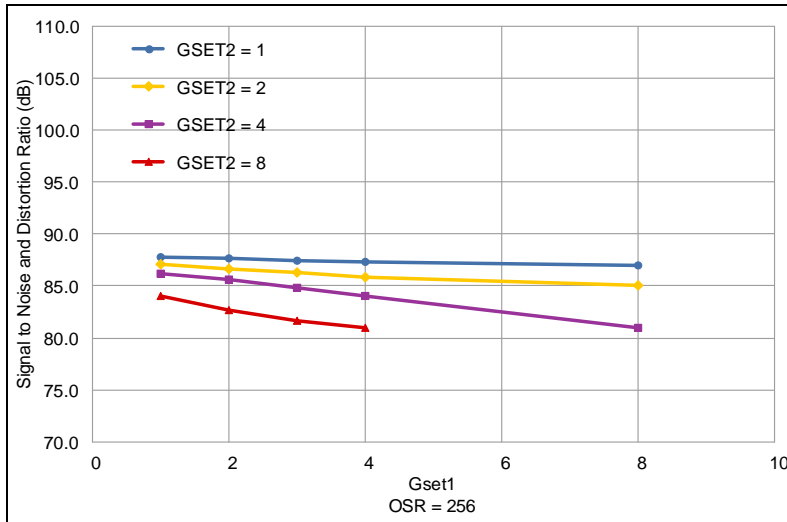


Figure 11 Dependence of SINAD on GSET1

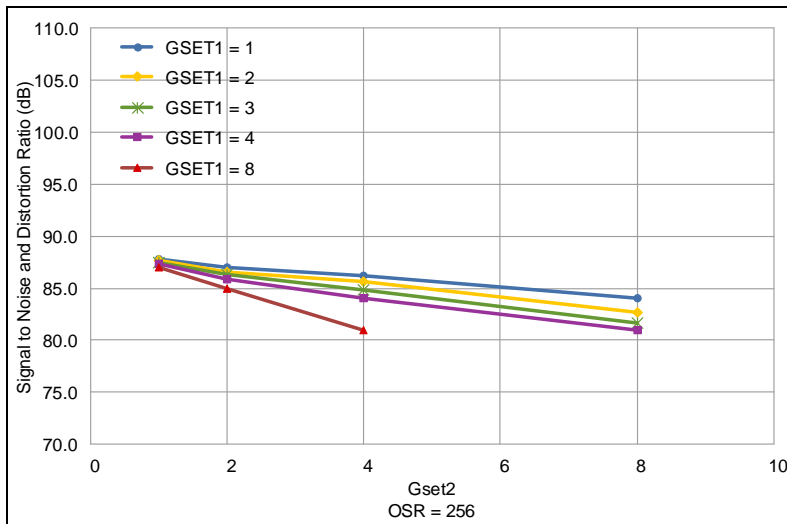


Figure 12 Dependence of SINAD on GSET2

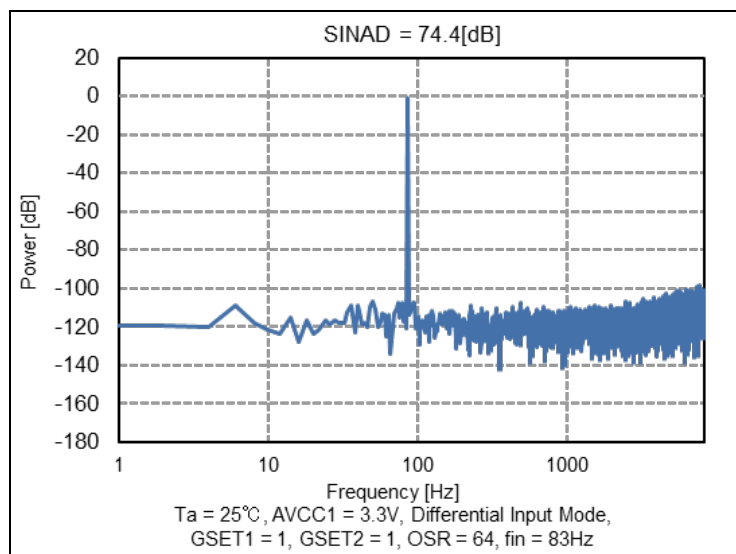


Figure 13 Power versus Frequency (GSET1 = 1, GSET2 = 1, OSR = 64)

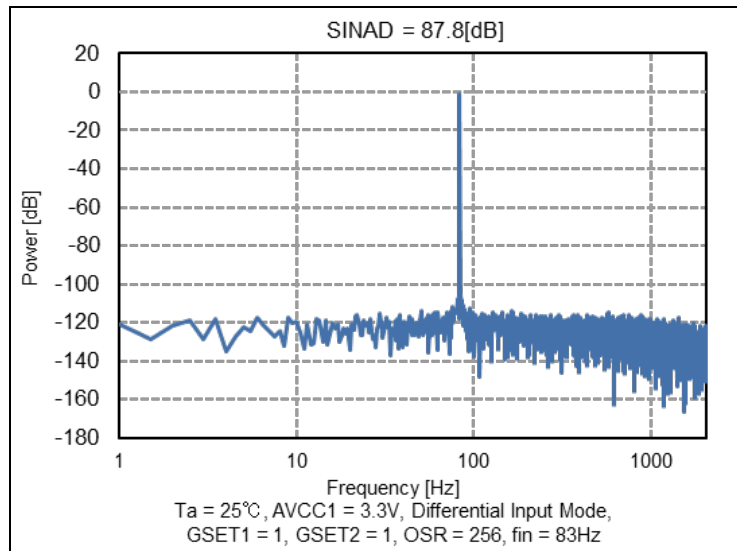


Figure 14 Power versus Frequency (GSET1 = 1, GSET2 = 1, OSR = 256)

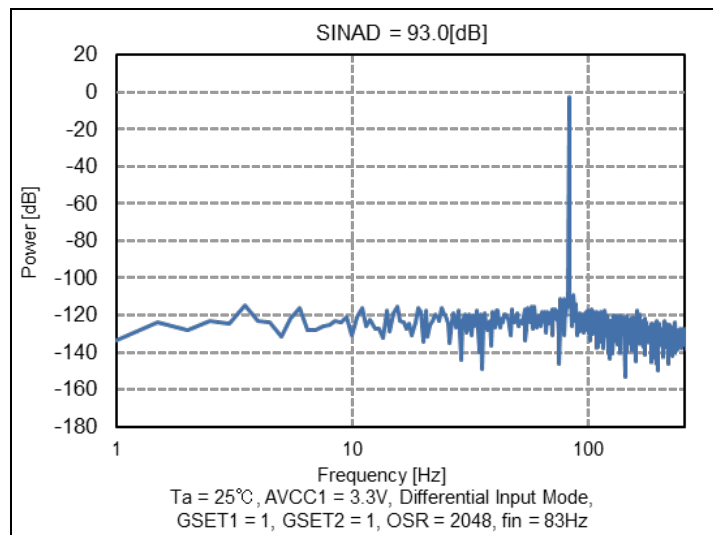


Figure 15 Power versus Frequency (GSET1 = 1, GSET2 = 1, OSR = 2048)

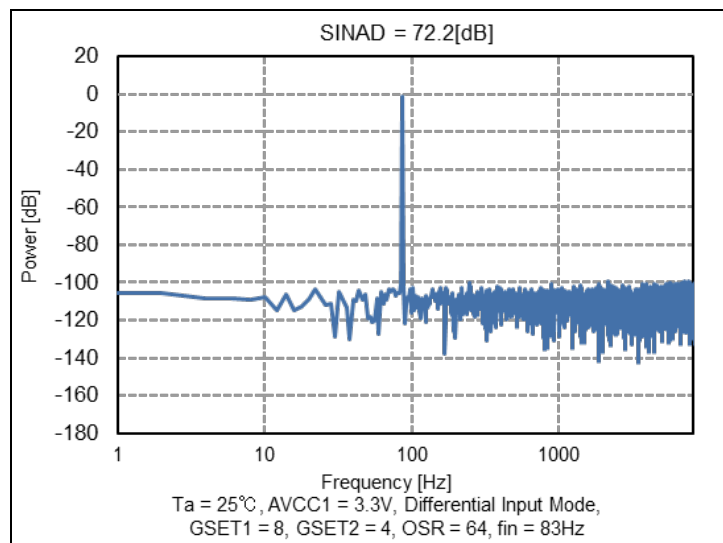
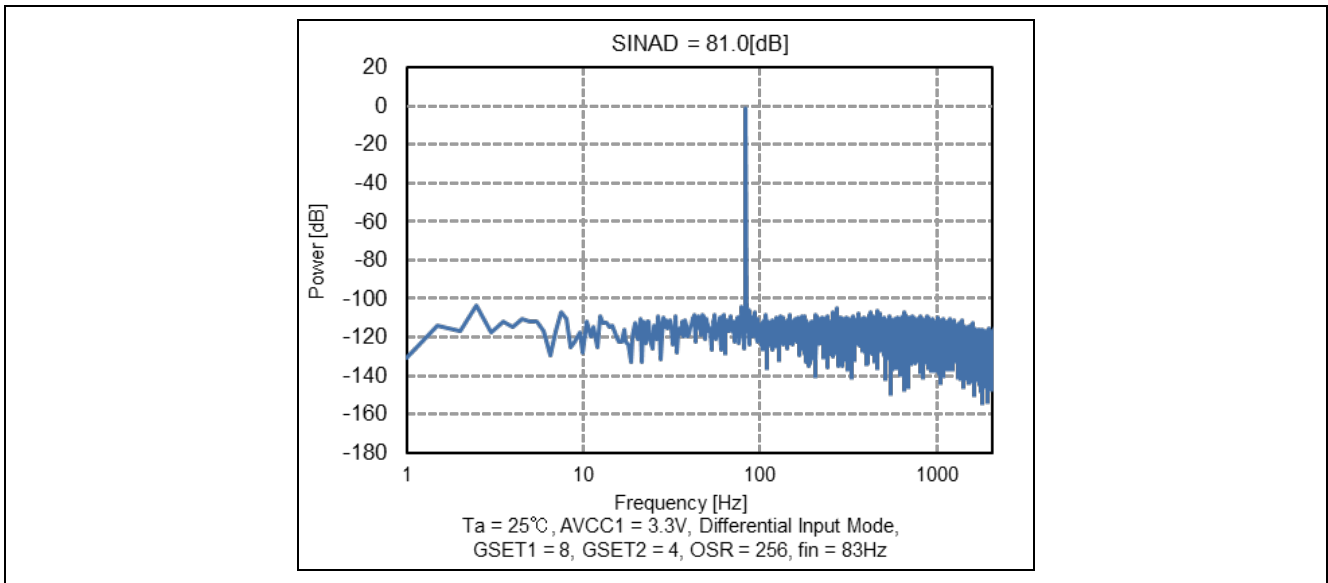
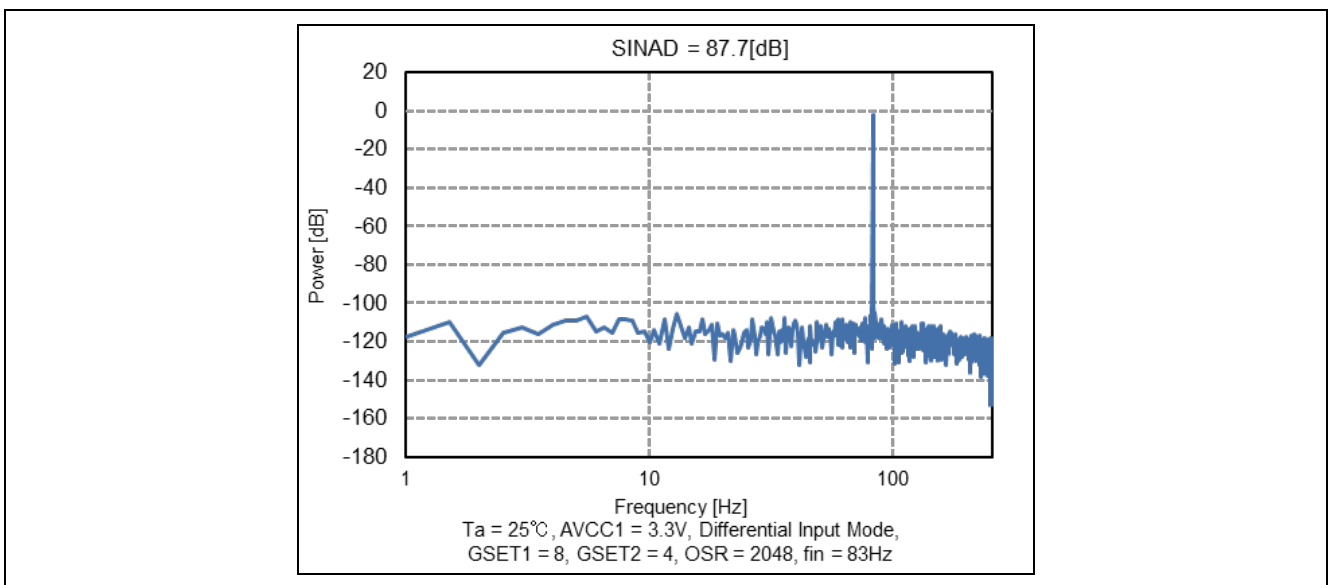


Figure 16 Power versus Frequency (GSET1 = 8, GSET2 = 4, OSR = 64)



**Figure 17 Power versus Frequency (GSET1 = 8, GSET2 = 4, OSR = 256)**



**Figure 18 Power versus Frequency (GSET1 = 8, GSET2 = 4, OSR = 2048)**

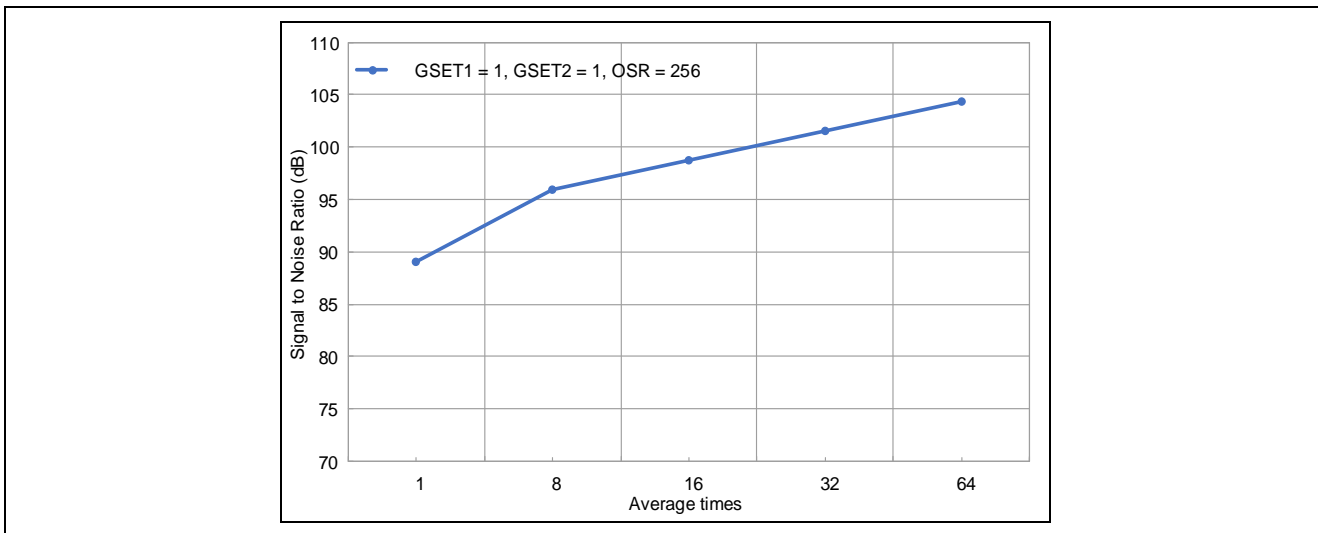
### 2.3.1 Improve Accuracy by Averaging A/D Conversion Result

The 24-Bit Sigma-Delta A/D Converter has an averaging function. When averaging is used, multiple conversions are performed and the results are averaged. The output data can be averaged 8, 16, 32, or 64 times. This can suppress the influence of sudden noise and improve the accuracy of the conversion result.

**Table 7 Performance Evaluation Result by Averaging A/D Conversion Result**

Conditions:  $V_{CC} = AV_{CC0} = AV_{CC1} = 3.3\text{ V}$ ,  $V_{SS} = AV_{SS0} = AV_{SS1} = 0\text{ V}$ ,  $V_{COM} = 1.0\text{ V}$ . The electrical specifications are applied at differential input mode, external clock input used,  $F_{OS} = 1\text{ MHz}$ ,  $d_{OFR} = 0\text{ mV}$ , unless otherwise specified.

| Parameter   | Symbol     | Typ   | Unit | Test Conditions   |                  |
|---|------------|-------|------|---|------------------|
| Signal to Noise Ratio<br>$V_{ID} = 0\text{ V}$                  | SNR        | 89.1  | dB   | $G_{SET1} = 1, G_{SET2} = 1,$<br>$OSR = 256$                                    | No averaging     |
|   |            | 95.9  |      |   | 8 times average  |
|   |            | 98.8  |      |   | 16 times average |
|   |            | 101.5 |      |   | 32 times average |
|   |            | 104.3 |      |   | 64 times average |
| Signal to Noise and Distortion Ratio<br>$f_{in} = 10\text{ Hz}$ | SINAD      | 88.1  | dB   | $G_{SET1} = 1, G_{SET2} = 1,$<br>$OSR = 256$                                    | No averaging     |
|   |            | 91.8  |      |   | 8 times average  |
|   |            | 92.9  |      |   | 16 times average |
|   |            | 94.1  |      |   | 32 times average |
|   |            | 95.4  |      |   | 64 times average |
| Effective number of bits<br>$f_{in} = 10\text{ Hz}$             | ENOB       | 14.3  | bit  | $G_{SET1} = 1, G_{SET2} = 1,$<br>$OSR = 256$                                    | No averaging     |
|   |            | 15.0  |      |   | 8 times average  |
|   |            | 15.1  |      |   | 16 times average |
|   |            | 15.3  |      |   | 32 times average |
|   |            | 15.6  |      |   | 64 times average |
| Effective Resolution  | ENOB (RMS) | 16.3  | bit  | $G_{SET1} = 1, G_{SET2} = 1,$<br>$OSR = 256,$<br>$V_{fullscale} = 1.6\text{ V}$ | No averaging     |
|   |            | 17.4  |      |   | 8 times average  |
|   |            | 17.9  |      |   | 16 times average |
|   |            | 18.4  |      |   | 32 times average |
|   |            | 18.8  |      |   | 64 times average |



**Figure 19 SNR versus Average Times**

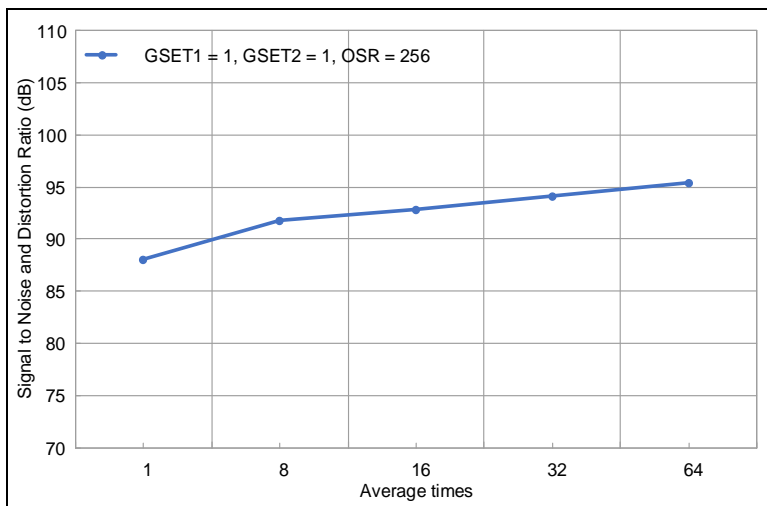


Figure 20 SINAD versus Average Times

## 2.4 Sensor Bias (SBIAS) Characteristics

Table 8 shows SBIAS drift characteristics evaluation results.

The average value  $\pm 1\sigma$  of the evaluation results is defined as the typical and the average value  $\pm 5\sigma$  of the evaluation results is defined as the maximum.

Table 8 SBIAS Drift Characteristics Evaluation Result

Conditions: VCC = AVCC0 = AVCC1 = 2.7V to 5.5 V, VSS = AVSS0 = AVSS1 = 0 V, Ta = -40 °C to 105°C, SDADCSTC1.VREFSEL = 0, Connect the SBIAS/VREF1 pin to AVSS1 pin by a 0.22  $\mu$ F (-20% to +20%).

| Parameter   | Symbol              | Typ <sup>*1</sup> | Max <sup>*2</sup> | Unit   | Test Conditions |
|-------------|---------------------|-------------------|-------------------|--------|-----------------|
| SBIAS drift | dE <sub>SBIAS</sub> | 18.7              | 89.1              | ppm/°C | SBIAS = 0.8 V   |
|             |                     | 16.6              | 79.0              |        | SBIAS = 1.0 V   |
|             |                     | 14.8              | 73.4              |        | SBIAS = 1.2 V   |
|             |                     | 14.2              | 69.4              |        | SBIAS = 1.4 V   |
|             |                     | 13.2              | 66.6              |        | SBIAS = 1.6 V   |
|             |                     | 12.6              | 64.7              |        | SBIAS = 1.8 V   |
|             |                     | 12.1              | 63.6              |        | SBIAS = 2.0 V   |
|             |                     | 11.9              | 62.7              |        | SBIAS = 2.2 V   |

Note: SBIAS drift is calculated by (Max (SBIAS error (T (-40°C) to T (125°C))) - Min (SBIAS error (T (-40°C) to T (125°C)))) / (125°C - (-40°C))

- Notes: 1. Average  $\pm 1\sigma$   
 2. Average  $\pm 5\sigma$

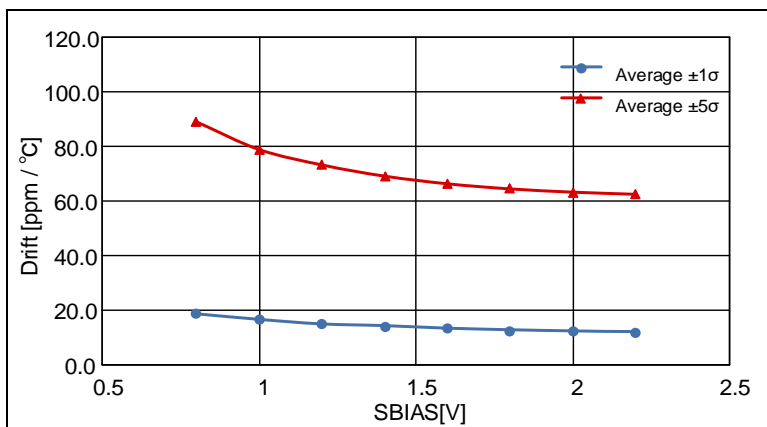


Figure 21 Drift versus SBIAS

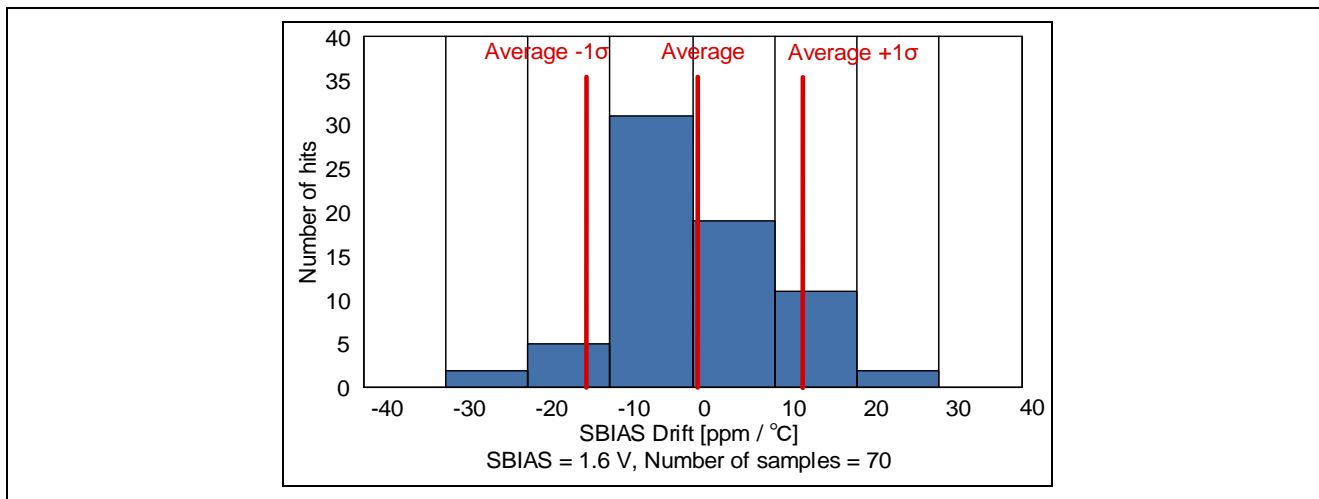


Figure 22 SBIAS Drift Histogram

## 2.5 Operating and Standby Current

Table 9 to Table 11 show operating current evaluation results of the A/D converter module-stop state, A/D conversion wait state, and A/D conversion state.

Table 9 Operating Current Evaluation Result of A/D Converter in Module-stop State

Conditions: VCC = AVCC0 = AVCC1 = 3.3 V, VSS = AVSS0 = AVSS1 = 0 V, HOCO clock oscillation frequency = 64 MHz, PCLKB = 32 MHz, MSTPCRD.MSTPD17 = 1b, SDADCCKCR.SDADCCKEN = 0b, SDADCCKCR.SDADCCKSEL = 1b, STC2.BGRPON = 0b, STC2.ADCPON = 0b, ADC2.SDADST = 0b

| Parameter                   | Symbol             | Typ | Unit | Test Conditions |
|-----------------------------|--------------------|-----|------|-----------------|
| Analog power supply current | I <sub>AVCC1</sub> | 0.1 | μA   | -               |

Table 10 Operating Current Evaluation Result in A/D Conversion Wait State

Conditions: VCC = AVCC0 = AVCC1 = 3.3 V, VSS = AVSS0 = AVSS1 = 0 V, HOCO clock oscillation frequency = 64 MHz, PCLKB = 32 MHz, MSTPCRD.MSTPD17 = 0b, SDADCCKCR.SDADCCKEN = 1b, SDADCCKCR.SDADCCKSEL = 1b, STC2.BGRPON = 1b, STC2.ADCPON = 1b, ADC2.SDADST = 0b

| Parameter                   | Symbol             | Typ  | Unit | Test Conditions                   |
|-----------------------------|--------------------|------|------|-----------------------------------|
| Analog power supply current | I <sub>AVCC1</sub> | 0.90 | mA   | SDADCSTC1.VREFSEL = 0, SBIAS=2.2V |
|                             |                    | 0.62 |      | Normal A/D conversion mode        |
|                             |                    |      |      | Low power A/D conversion mode     |

Table 11 Operating Current Evaluation Result in A/D Conversion State

Conditions: VCC = AVCC0 = AVCC1 = 3.3 V, VSS = AVSS0 = AVSS1 = 0 V, HOCO clock oscillation frequency = 64 MHz, PCLKB = 32 MHz, MSTPCRD.MSTPD17 = 0b, SDADCCKCR.SDADCCKEN = 1b, SDADCCKCR.SDADCCKSEL = 1b, STC2.BGRPON = 1b, STC2.ADCPON = 1b, ADC2.SDADST = 1b

| Parameter                      | Symbol             | Typ  | Max  | Unit | Test Conditions                     |
|--------------------------------|--------------------|------|------|------|-------------------------------------|
| Analog power supply current    | I <sub>AVCC1</sub> | 0.97 | 1.11 | mA   | SDADCSTC1.VREFSEL = 0, SBIAS=2.2V   |
|                                |                    | 0.77 | 0.90 |      | Normal A/D conversion mode          |
| Reference power supply current | I <sub>REF1</sub>  | 6.0  | 7.0  | μA   | SDADCSTC1.VREFSEL = 1, VREF1 = 0.8V |
|                                |                    | 18.0 | 22.0 |      | SDADCSTC1.VREFSEL = 1, VREF1 = 2.4V |
|                                |                    |      |      |      | Low power A/D conversion mode       |



### 3. Calibration Function

Calibration allows high-precision A/D conversion by calculating the offset error correction value and gain error correction value under the conditions of use. The calibration function performs A/D conversion of the internal or user-specified reference voltage, and then determines the most appropriate correction value from the error included in the conversion result. Calibration is started when 1 is written to the CLBSTR.CLBST bit. A/D conversion is performed several times to calculate the correction factor.

The calibration function should be performed in an environment where the analog block power supply, reference power supply, analog inputs, and SDADC24 reference clock are stable. If calibration is performed in an unstable environment, A/D conversion accuracy might deteriorate.

**Table 12 Settings and Operations of Calibration**

| Control register bits       |                 |              | Calculating correction factors for calibration |
|-----------------------------|-----------------|--------------|--|
| PGACn.PGASEL                | CLBC.CLBMD[1:0] | PGACn.PGACVE |  |
| 0 (Differential input mode) | Don't care      | 0            | Disabled                                       |
|                             | 00              | 1            | Internal calibration operation                 |
|                             | 01              | 1            | External offset calibration operation          |
|                             | 10              | 1            | External gain calibration operation            |

Note: The correction factors are not calculated for the channels set in single-ended input mode.

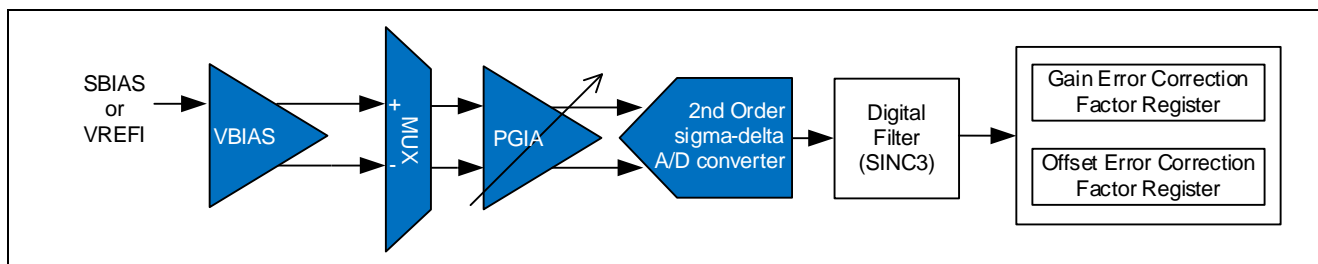
Calibration must be performed in the following cases:

- When differential input mode is used for the first time after reset.
- When the VREF mode is switched between external VREF mode and internal VREF mode using the STC1.VREFSEL bit in differential input mode.
- When the voltage is switched between the SBIAS output voltage and VREFI input voltage using the STC1.VSBIAS[3:0] bits in differential input mode.
- When the mode is switched from normal A/D conversion mode to low-power A/D conversion mode, or vice versa in differential input mode.
- When the gain is changed for the same channel in differential input mode.

- Notes:
1. Bits for the channel number of an A/D conversion result (ADCR.SDADCRC[2:0]), bit for displaying the status of an A/D conversion result (ADCR.SDADCRS), and bits for the A/D converter conversion result (ADCR.SDADCRD[23:0]) are not updated during internal or external calibration.
  2. When performing internal or external calibration, set the Automatic Scan Mode Selection bit of the Sigma-Delta A/D Converter Control Register 1 (ADC1) to 1 for single scan. For details, see section 3.4.3, Self-Diagnosis Flow of PGA Offset and section 3.4.4, Disconnection Detection Assist Flow.
  3. The  $V_{OFR}$  voltage cannot be set to a value other than 0 mV (PGACn.PGAOFS[4:0] = 00000b (n = 0 to 4)) during calibration operation.
  4. For external calibration operation, multiple channel settings cannot be set to PGACn.PGACVE = 1 (n = 0 to 4) at the same time.

#### 3.1 Internal Calibration Operation Mode

In internal calibration operation mode, offset and gain error correction values are calculated by the internal analog input generated based on the internal reference voltage. The correction values for multiple input channels can be calculated by only one calibration operation. After calibration is started by the CLBSTR.CLBST bit, the offset and gain error correction values are calculated for all input channels set as the calibration targets. Calibration is complete after a calibration completion interrupt (SDADC\_CALIEND) is generated. For details on the setting, see Figure 30.



**Figure 23 Internal Calibration**

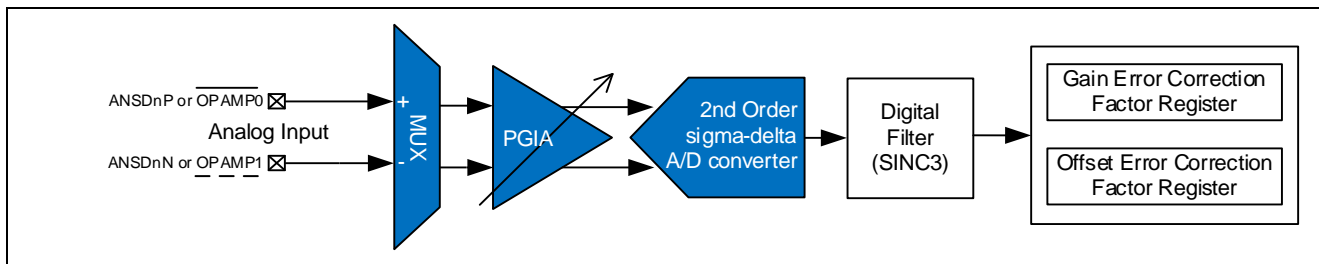
### 3.2 External Calibration Operation Mode

In external calibration operation mode, calibration is performed based on the user-specified reference voltage. The offset calibration calculates the correction value for the A/D conversion result corresponding to the differential analog input at the time of the offset calibration (VIDOCAL) to be corrected to 0. Gain calibration calculates the correction value for the A/D conversion result corresponding to the value (VIDGCAL - VIDOCAL) calculated by subtracting the differential analog input at the time of the offset calibration (VIDOCAL) from the differential analog input at the time of the gain calibration (VIDGCAL) to be corrected to  $2^{23} - 1$ . The correction value for one channel is calculated by one calibration operation. To calculate the offset and gain error correction values, two calibration operations must be performed. When each calibration completes, a calibration completion interrupt (SDADC\_CALIEND) is generated. Set the reference voltage for the input channel before each calibration operation is performed (before setting the CLBSTR.CLBST bit to 1). Table 13 shows the user-specified reference voltage in external calibration operation mode. For details on the setting, see Figure 31.

**Table 13 User-specified Reference Voltage in External Calibration Operation Mode**

| User-specified reference voltage   |   | Min          | Typ | Max          | Unit |
|--|---|--------------|-----|--------------|------|
| The differential analog input at the time of the external offset calibration (VIDOCAL) | ANSDnP – ANSDnN<br>(n = 0 to 3) or<br>OPAMP0 - OPAMP1 | *1           | 0   | *1           | V    |
| The differential analog input at the time of the external gain calibration (VIDGCAL)   |   | 0.4/GTOTAL*1 |     | 0.8/GTOTAL*1 | V    |
| VIDGCAL - VIDOCAL*1  |   | 0.4/GTOTAL   |     | 0.8/GTOTAL   | V    |

Note 1. VIDOCAL and VIDGCAL must be used in a range that satisfies the minimum and maximum values of VIDGCAL - VIDOCAL.



**Figure 24 External Calibration**

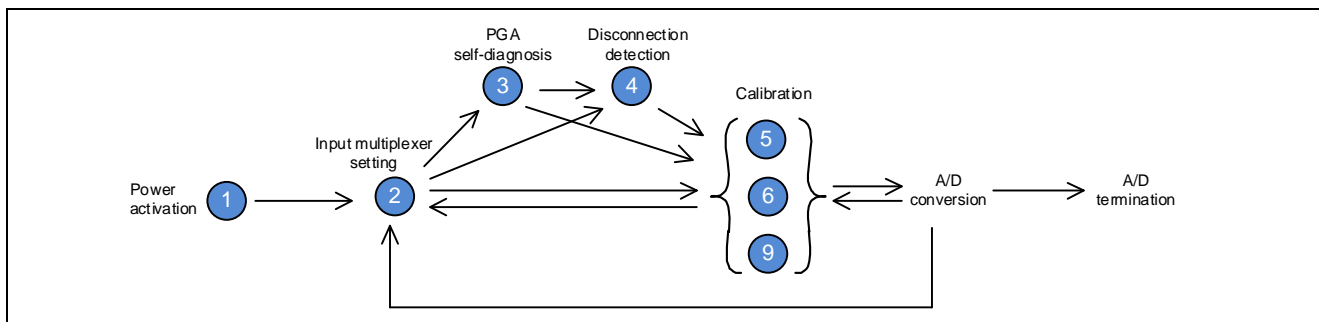
### 3.3 Recalibration Omitted

When using the differential input mode with the same STC1.SDADLPM, STC1.VSBIAS[3:0], STC1.VREFSEL and PGACn.PGAGC[4:0] bit settings as in the calibration execution, store the values of the GCVLR and OCVLR registers after calibration to the data flash. Recalibration can be omitted by copying the stored value to the GCVLR and OCVLR register from the next time. For details on the settings, see Figure 32.

However, when there is a large temperature change or there is a change in the user environment or use conditions, it is necessary to perform re-calibration.

### 3.4 Calibration Control Flows

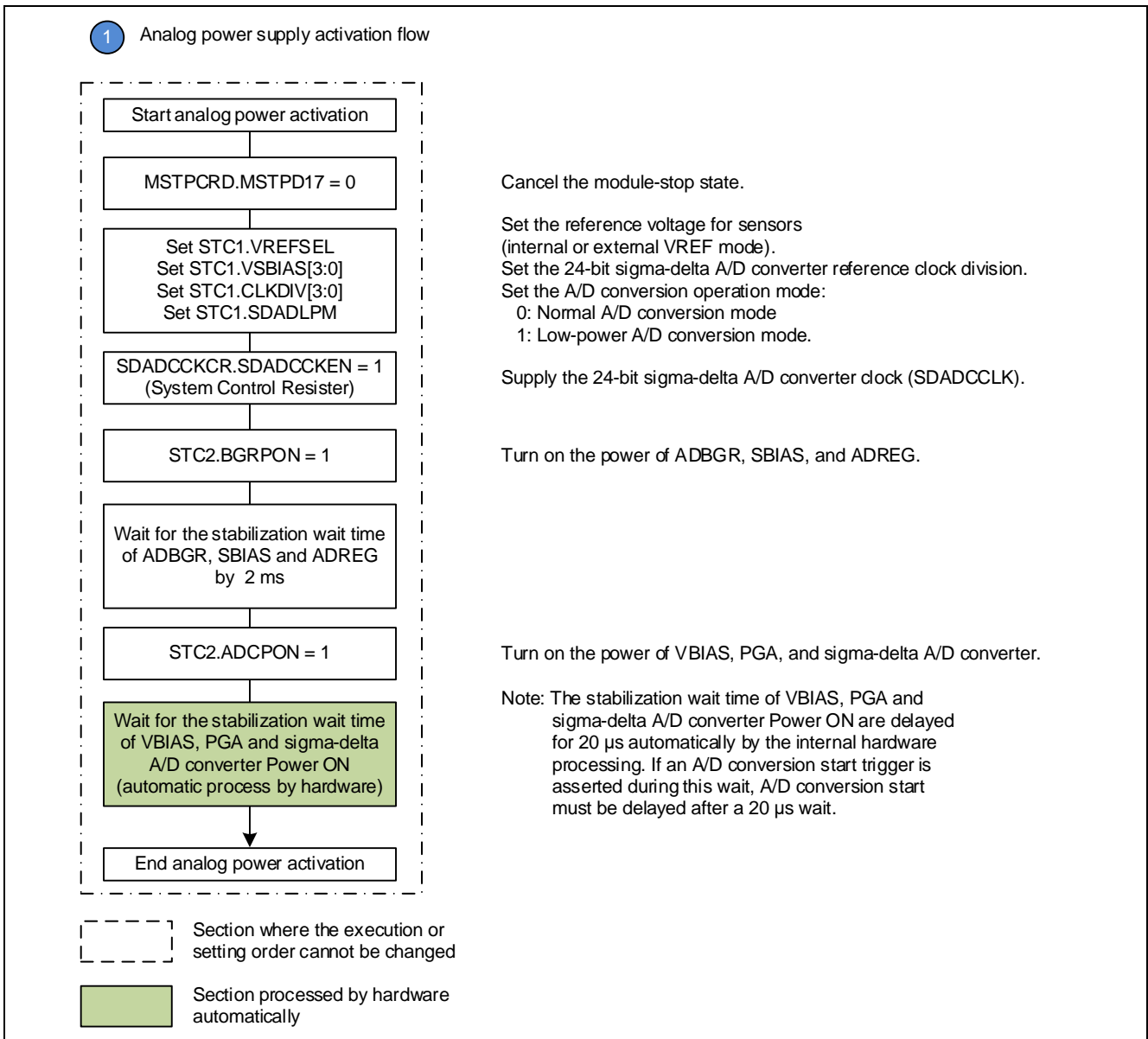
Figure 26 to Figure 32 show the startup flow and calibration flow of the SDADC24.



**Figure 25 Overview of Flows**

### 3.4.1 Analog Power Supply Activation Flow

Figure 26 shows the flow for analog power supply activation.



**Figure 26 Analog Power Supply Activation Flow**

### 3.4.2 Input Multiplexer Setting Flow

Figure 27 shows the flow for input multiplexer setting.

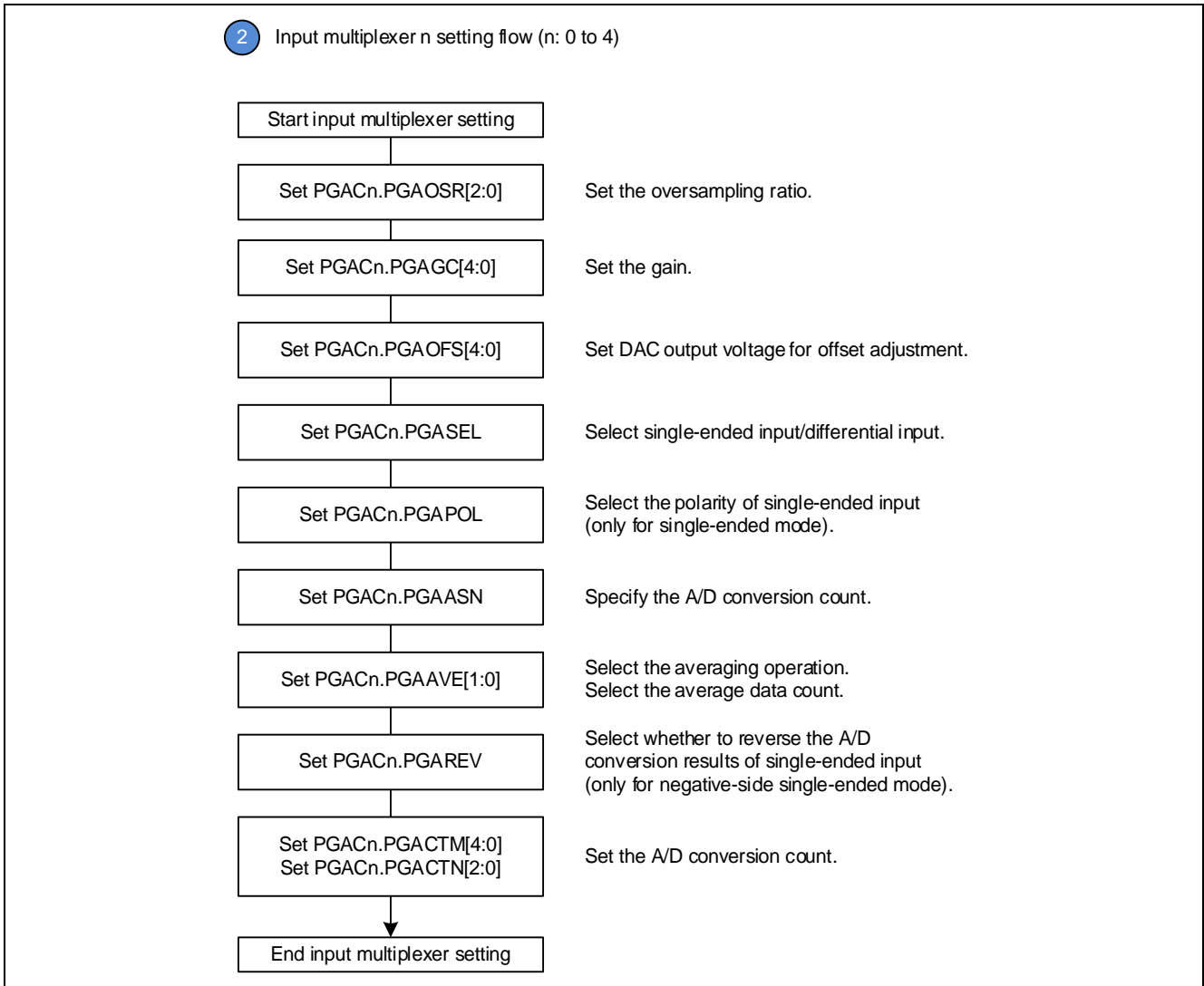
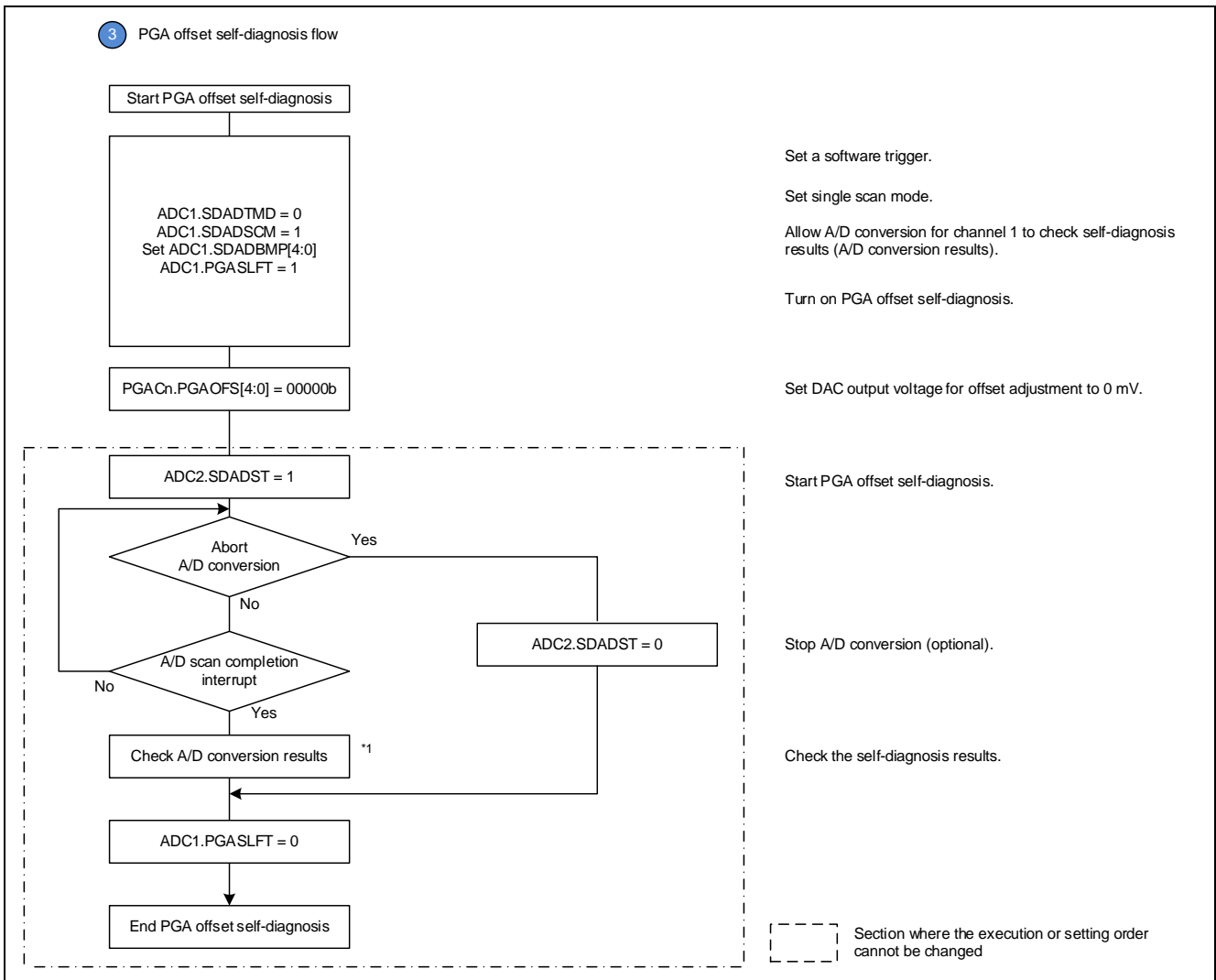


Figure 27 Input Multiplexer Setting Flow

### 3.4.3 Self-Diagnosis Flow of PGA Offset

Figure 28 shows the flow for self-diagnosis of PGA offset.

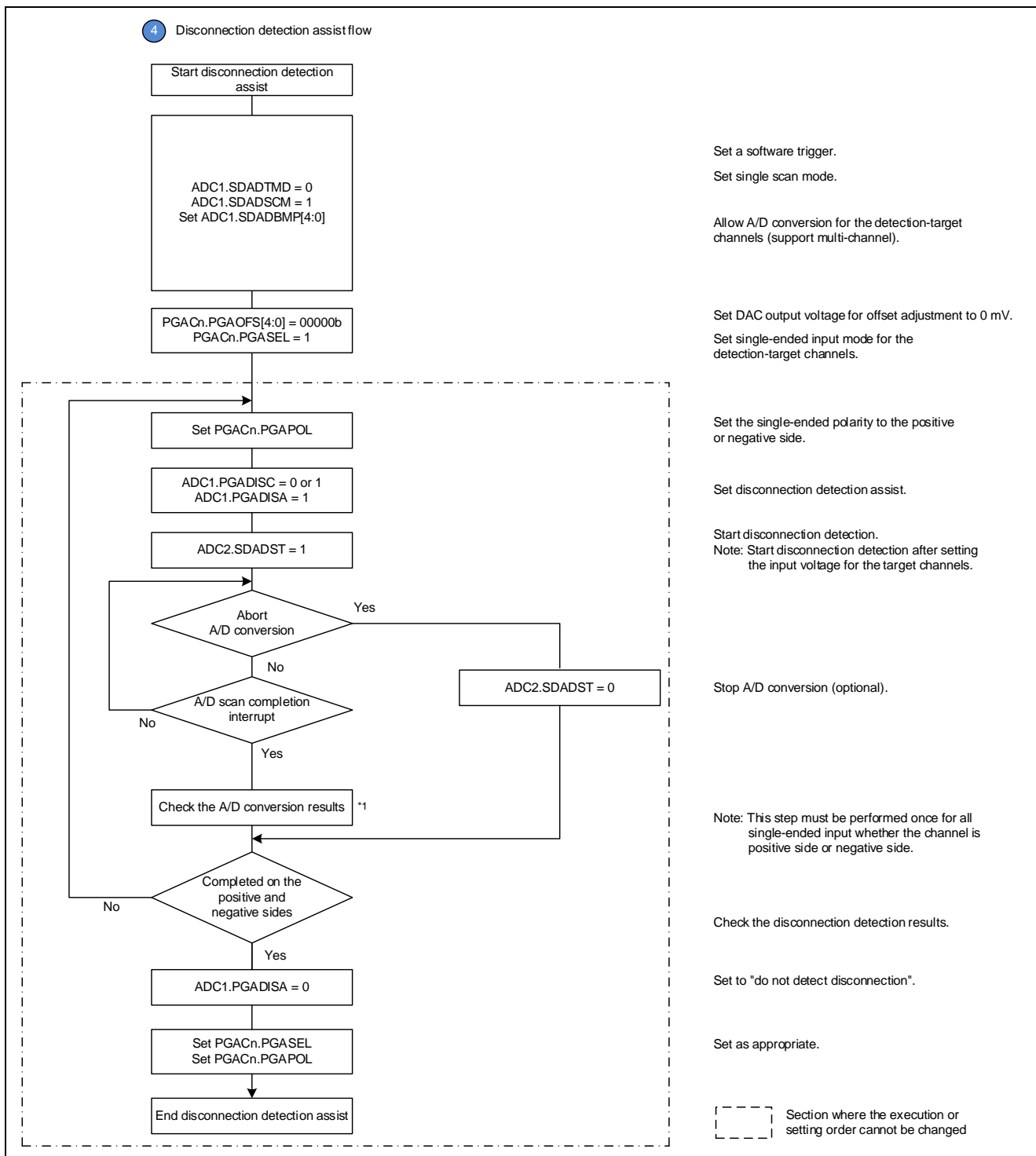


**Figure 28 Self-diagnosis Flow for PGA Offset**

Note: 1. The results of PGA offset self-diagnosis can be checked from A/D conversion results.

### 3.4.4 Disconnection Detection Assist Flow

Figure 29 shows the flow for disconnection detection assist.



**Figure 29 Disconnection Detection Assist Flow**

Note 1. The disconnection detection status can be checked from the A/D conversion results.

### 3.4.5 Internal Calibration Flow

Figure 30 shows the flow for internal calibration.

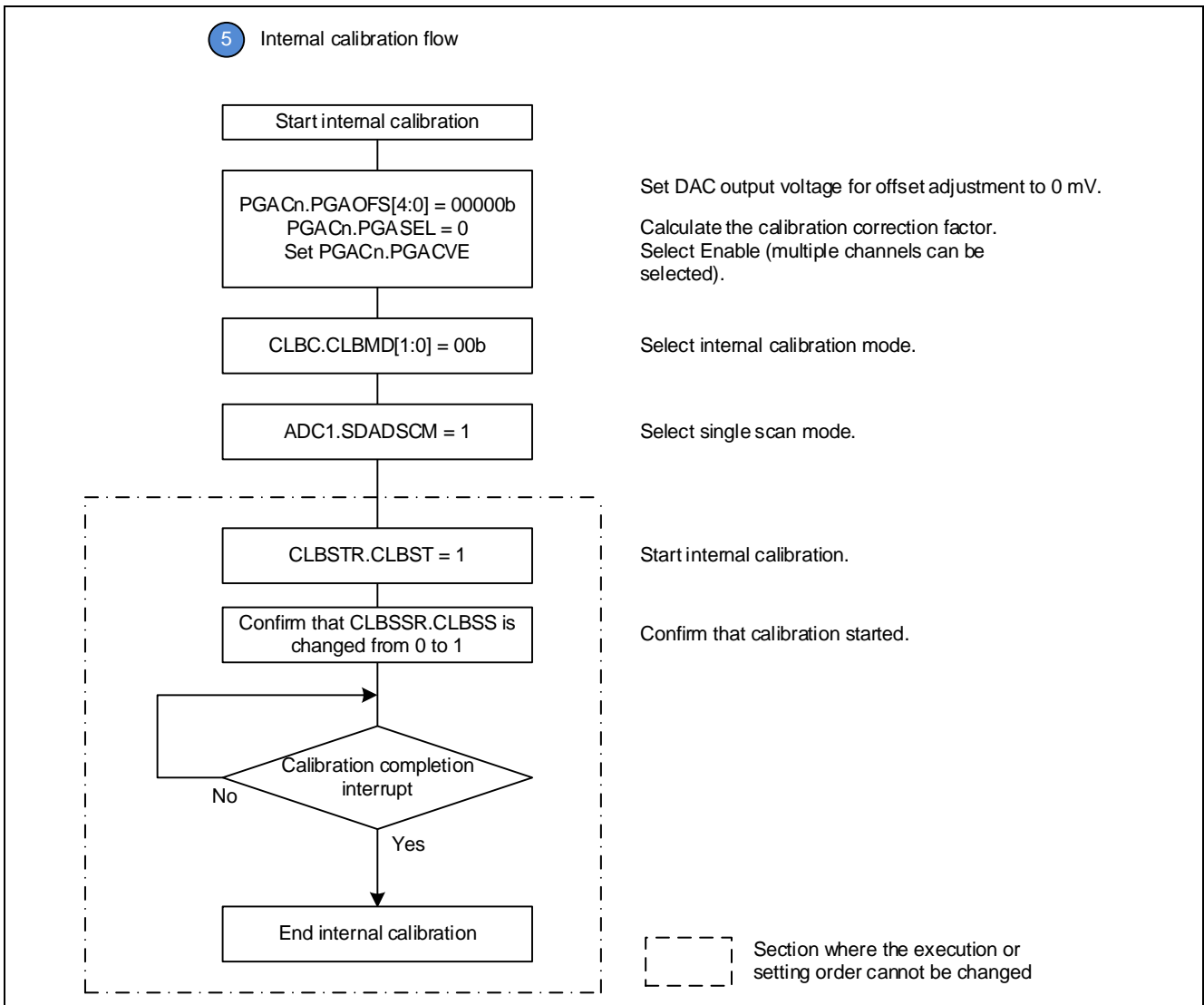
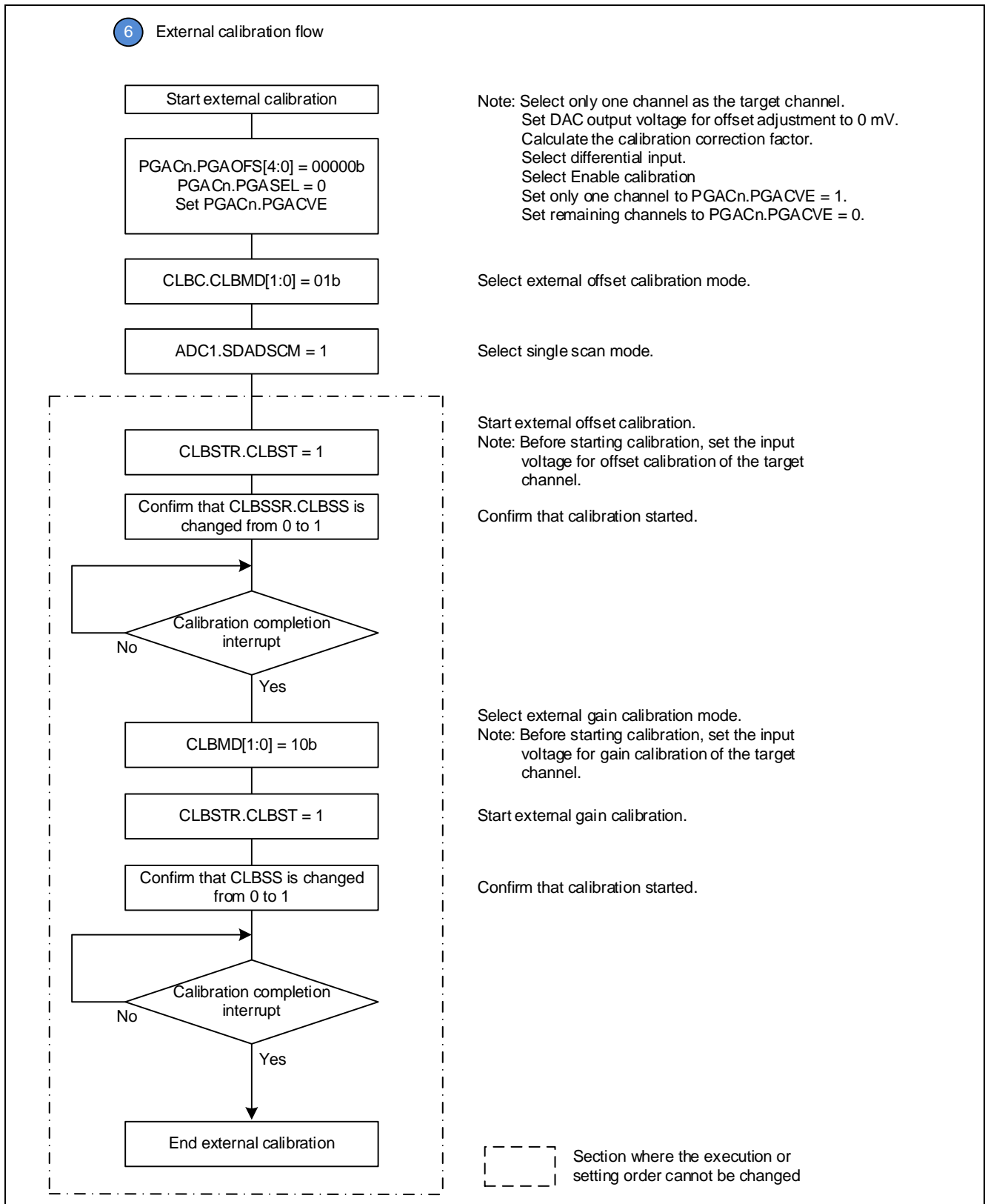


Figure 30 Internal Calibration Flow

### 3.4.6 External Calibration Flow

Figure 31 shows the flow for external calibration.



**Figure 31 External Calibration Flow**

**Note:** To perform external calibration for multiple channels, repeat this flow for each channel.



### 3.4.7 Recalibration Omitted Flow

Figure 32 shows the flow for omitting recalibration.

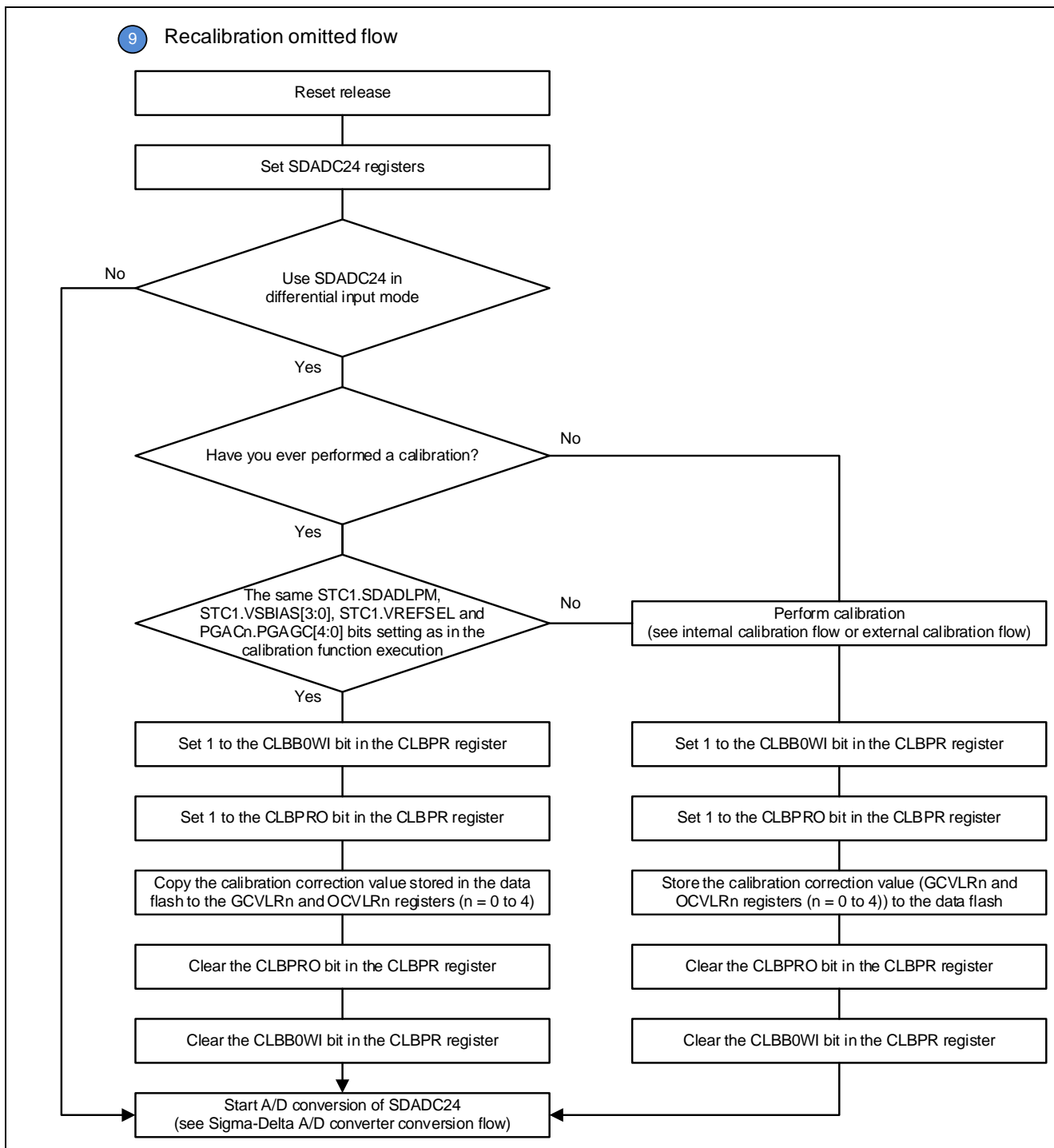


Figure 32 Recalibration Omitted Flow

## Website and Support

Visit the following vanity URLs to learn about key elements of the Synergy Platform, download components and related documentation, and get support.

|                                 |  |
|---------------------------------|--|
| Synergy Software                | <a href="http://www.renesas.com/synergy/software">www.renesas.com/synergy/software</a>                       |
| Synergy Software Package        | <a href="http://www.renesas.com/synergy/ssp">www.renesas.com/synergy/ssp</a>                                 |
| Software add-ons                | <a href="http://www.renesas.com/synergy/addons">www.renesas.com/synergy/addons</a>                           |
| Software glossary               | <a href="http://www.renesas.com/synergy/softwareglossary">www.renesas.com/synergy/softwareglossary</a>       |
| Development tools               | <a href="http://www.renesas.com/synergy/tools">www.renesas.com/synergy/tools</a>                             |
| Synergy Hardware                | <a href="http://www.renesas.com/synergy/hardware">www.renesas.com/synergy/hardware</a>                       |
| Microcontrollers                | <a href="http://www.renesas.com/synergy/mcus">www.renesas.com/synergy/mcus</a>                               |
| MCU glossary                    | <a href="http://www.renesas.com/synergy/mcuglossary">www.renesas.com/synergy/mcuglossary</a>                 |
| Parametric search               | <a href="http://www.renesas.com/synergy/parametric">www.renesas.com/synergy/parametric</a>                   |
| Kits                            | <a href="http://www.renesas.com/synergy/kits">www.renesas.com/synergy/kits</a>                               |
| Synergy Solutions Gallery       | <a href="http://www.renesas.com/synergy/solutionsgallery">www.renesas.com/synergy/solutionsgallery</a>       |
| Partner projects                | <a href="http://www.renesas.com/synergy/partnerprojects">www.renesas.com/synergy/partnerprojects</a>         |
| Application projects            | <a href="http://www.renesas.com/synergy/applicationprojects">www.renesas.com/synergy/applicationprojects</a> |
| Self-service support resources: |  |
| Documentation                   | <a href="http://www.renesas.com/synergy/docs">www.renesas.com/synergy/docs</a>                               |
| Knowledgebase                   | <a href="http://www.renesas.com/synergy/knowledgebase">www.renesas.com/synergy/knowledgebase</a>             |
| Forums                          | <a href="http://www.renesas.com/synergy/forum">www.renesas.com/synergy/forum</a>                             |
| Training                        | <a href="http://www.renesas.com/synergy/training">www.renesas.com/synergy/training</a>                       |
| Videos                          | <a href="http://www.renesas.com/synergy/videos">www.renesas.com/synergy/videos</a>                           |
| Chat and web ticket             | <a href="http://www.renesas.com/synergy/resourcelibrary">www.renesas.com/synergy/resourcelibrary</a>         |

## Revision History

| Rev. | Date         | Description |                  |
|------|--------------|-------------|------------------|
|      |              | Page        | Summary          |
| 1.00 | Dec 6, 2018  | -           | Initial version  |
| 1.01 | Dec 11, 2018 | -           | Minor correction |

All trademarks and registered trademarks are the property of their respective owners.

## Notice

1. Descriptions of circuits, software and other related information in this document are provided only to illustrate the operation of semiconductor products and application examples. You are fully responsible for the incorporation or any other use of the circuits, software, and information in the design of your product or system. Renesas Electronics disclaims any and all liability for any losses and damages incurred by you or third parties arising from the use of these circuits, software, or information.
2. Renesas Electronics hereby expressly disclaims any warranties against and liability for infringement or any other claims involving patents, copyrights, or other intellectual property rights of third parties, by or arising from the use of Renesas Electronics products or technical information described in this document, including but not limited to, the product data, drawings, charts, programs, algorithms, and application examples.
3. No license, express, implied or otherwise, is granted hereby under any patents, copyrights or other intellectual property rights of Renesas Electronics or others.
4. You shall not alter, modify, copy, or reverse engineer any Renesas Electronics product, whether in whole or in part. Renesas Electronics disclaims any and all liability for any losses or damages incurred by you or third parties arising from such alteration, modification, copying or reverse engineering.
5. Renesas Electronics products are classified according to the following two quality grades: "Standard" and "High Quality". The intended applications for each Renesas Electronics product depends on the product's quality grade, as indicated below.  
"Standard": Computers; office equipment; communications equipment; test and measurement equipment; audio and visual equipment; home electronic appliances; machine tools; personal electronic equipment; industrial robots; etc.  
"High Quality": Transportation equipment (automobiles, trains, ships, etc.); traffic control (traffic lights); large-scale communication equipment; key financial terminal systems; safety control equipment; etc.  
Unless expressly designated as a high reliability product or a product for harsh environments in a Renesas Electronics data sheet or other Renesas Electronics document, Renesas Electronics products are not intended or authorized for use in products or systems that may pose a direct threat to human life or bodily injury (artificial life support devices or systems; surgical implantations; etc.), or may cause serious property damage (space system; undersea repeaters; nuclear power control systems; aircraft control systems; key plant systems; military equipment; etc.). Renesas Electronics disclaims any and all liability for any damages or losses incurred by you or any third parties arising from the use of any Renesas Electronics product that is inconsistent with any Renesas Electronics data sheet, user's manual or other Renesas Electronics document.
6. When using Renesas Electronics products, refer to the latest product information (data sheets, user's manuals, application notes, "General Notes for Handling and Using Semiconductor Devices" in the reliability handbook, etc.), and ensure that usage conditions are within the ranges specified by Renesas Electronics with respect to maximum ratings, operating power supply voltage range, heat dissipation characteristics, installation, etc. Renesas Electronics disclaims any and all liability for any malfunctions, failure or accident arising out of the use of Renesas Electronics products outside of such specified ranges.
7. Although Renesas Electronics endeavors to improve the quality and reliability of Renesas Electronics products, semiconductor products have specific characteristics, such as the occurrence of failure at a certain rate and malfunctions under certain use conditions. Unless designated as a high reliability product or a product for harsh environments in a Renesas Electronics data sheet or other Renesas Electronics document, Renesas Electronics products are not subject to radiation resistance design. You are responsible for implementing safety measures to guard against the possibility of bodily injury, injury or damage caused by fire, and/or danger to the public in the event of a failure or malfunction of Renesas Electronics products, such as safety design for hardware and software, including but not limited to redundancy, fire control and malfunction prevention, appropriate treatment for aging degradation or any other appropriate measures. Because the evaluation of microcomputer software alone is very difficult and impractical, you are responsible for evaluating the safety of the final products or systems manufactured by you.
8. Please contact a Renesas Electronics sales office for details as to environmental matters such as the environmental compatibility of each Renesas Electronics product. You are responsible for carefully and sufficiently investigating applicable laws and regulations that regulate the inclusion or use of controlled substances, including without limitation, the EU RoHS Directive, and using Renesas Electronics products in compliance with all these applicable laws and regulations. Renesas Electronics disclaims any and all liability for damages or losses occurring as a result of your noncompliance with applicable laws and regulations.
9. Renesas Electronics products and technologies shall not be used for or incorporated into any products or systems whose manufacture, use, or sale is prohibited under any applicable domestic or foreign laws or regulations. You shall comply with any applicable export control laws and regulations promulgated and administered by the governments of any countries asserting jurisdiction over the parties or transactions.
10. It is the responsibility of the buyer or distributor of Renesas Electronics products, or any other party who distributes, disposes of, or otherwise sells or transfers the product to a third party, to notify such third party in advance of the contents and conditions set forth in this document.
11. This document shall not be reprinted, reproduced or duplicated in any form, in whole or in part, without prior written consent of Renesas Electronics.
12. Please contact a Renesas Electronics sales office if you have any questions regarding the information contained in this document or Renesas Electronics products.

(Note 1) "Renesas Electronics" as used in this document means Renesas Electronics Corporation and also includes its directly or indirectly controlled subsidiaries.

(Note 2) "Renesas Electronics product(s)" means any product developed or manufactured by or for Renesas Electronics.

(Rev.4.0-1 November 2017)



### SALES OFFICES

Renesas Electronics Corporation

<http://www.renesas.com>

Refer to "<http://www.renesas.com/>" for the latest and detailed information.

#### Renesas Electronics Corporation

TOYOSU FORESIA, 3-2-24 Toyosu, Koto-ku, Tokyo 135-0061, Japan

#### Renesas Electronics America Inc.

1001 Murphy Ranch Road, Milpitas, CA 95035, U.S.A.  
Tel: +1-408-432-8888, Fax: +1-408-434-5351

#### Renesas Electronics Canada Limited

9251 Yonge Street, Suite 8309 Richmond Hill, Ontario Canada L4C 9T3  
Tel: +1-905-237-2004

#### Renesas Electronics Europe Limited

Dukes Meadow, Millboard Road, Bourne End, Buckinghamshire, SL8 5FH, U.K.  
Tel: +44-1628-651-700

#### Renesas Electronics Europe GmbH

Arcadiastrasse 10, 40472 Düsseldorf, Germany  
Tel: +49-211-6503-0, Fax: +49-211-6503-1327

#### Renesas Electronics (China) Co., Ltd.

Room 1709 Quantum Plaza, No.27 ZhichunLu, Haidian District, Beijing, 100191 P. R. China  
Tel: +86-10-8235-1155, Fax: +86-10-8235-7679

#### Renesas Electronics (Shanghai) Co., Ltd.

Unit 301, Tower A, Central Towers, 555 Langao Road, Putuo District, Shanghai, 200333 P. R. China  
Tel: +86-21-2226-0888, Fax: +86-21-2226-0999

#### Renesas Electronics Hong Kong Limited

Unit 1601-1611, 16/F., Tower 2, Grand Century Place, 193 Prince Edward Road West, Mongkok, Kowloon, Hong Kong  
Tel: +852-2265-6688, Fax: +852 2886-9022

#### Renesas Electronics Taiwan Co., Ltd.

13F, No. 363, Fu Shing North Road, Taipei 10543, Taiwan  
Tel: +886-2-8175-9600, Fax: +886 2-8175-9670

#### Renesas Electronics Singapore Pte. Ltd.

80 Bendemeer Road, Unit #06-02 Hyflux Innovation Centre, Singapore 339949  
Tel: +65-6213-0200, Fax: +65-6213-0300

#### Renesas Electronics Malaysia Sdn.Bhd.

Unit 1207, Block B, Menara Amcorp, Amcorp Trade Centre, No. 18, Jln Persiaran Barat, 46050 Petaling Jaya, Selangor Darul Ehsan, Malaysia  
Tel: +60-3-7955-9390, Fax: +60-3-7955-9510

#### Renesas Electronics India Pvt. Ltd.

No.777C, 100 Feet Road, HAL 2nd Stage, Indiranagar, Bangalore 560 038, India  
Tel: +91-80-67208700, Fax: +91-80-67208777

#### Renesas Electronics Korea Co., Ltd.

17F, KAMCO Yangjae Tower, 262, Gangnam-daero, Gangnam-gu, Seoul, 06265 Korea  
Tel: +82-2-558-3737, Fax: +82-2-558-5338