

CS+ Integrated Development Environment Package V8.04.00

R20UT4806EJ0100
Rev.1.00
Jun 11, 2020

Release Note

Thank you for using the CS+ integrated development environment.

This document describes restrictions on and points for caution regarding the CS+ package. Read this document before using the package.

This document applies to the following products:

- CS+ for CC V8.04.00 (Evaluation Version)
- CS+ for CA, CX V4.04.00 / CS+ Package V8.04.00 (Evaluation Version)

The actual package version may be different from the version indicated by the version display facility of CS+.

Refer to Appendix Supported Devices and Tools, regarding the version indicated by the version display facility.

Contents

| | |
|-------------------------------------------------------------------------------|----|
| Chapter 1. Operating Environment | 2 |
| Chapter 2. Points for Caution..... | 3 |
| Chapter 3. Points for Caution Regarding Installation and Uninstallation | 4 |
| Chapter 4. Collection of User Information | 9 |
| Chapter 5. Release Notes | 10 |
| Appendix Supported Devices and Tools..... | 11 |

Chapter 1. Operating Environment

The operating environment for use with CS+ is described below.

1.1 Hardware environment

The following hardware environments are supported.

- Processor: At least 1 GHz (support for hyper threading/multicore CPU)
- Main memory: At least 1 GB (2 GB or higher for Windows 10 and other 64-bit editions of Windows OS), 2 GB or higher recommended
- Display: Resolution at least 1,204 x 768; at least 65,536 colors
- Interface: USB 2.0

1.2 Software environment

The following software environments are supported.

- Windows 8.1 (32-bit and 64-bit editions)
- Windows 10 (32-bit and 64-bit editions)
- Microsoft .NET Framework 4.5.2
- Microsoft Visual C++ 2015 Update 3 runtime libraries (x86)
- Online help: Internet Explorer, Chrome, or Firefox (The latest version is recommended)
- Offline help: Internet Explorer 11 or higher

Remark For any of these, we recommend having the latest service pack installed.

Chapter 2. Points for Caution

This section states general points for caution.

2.1 Renesas Flash Programmer

The Renesas Flash Programmer included in the CS+ package is the free evaluation edition. Accordingly, please refrain from raising questions with our inquiry window.

Microcontrollers supported by the Renesas Flash Programmer are listed on the following Web site.

<https://www.renesas.com/rfp>

Windows administrator privileges are required to install the software.

2.2 “R8C” in User’s Manual and Online Help

Although the user’s manuals and the online help system include statements regarding the R8C Family, CS+ does not support that family.

Chapter 3. Points for Caution Regarding Installation and Uninstallation

This section provides points for caution regarding installation and uninstallation.

3.1 Points for caution regarding installation

3.1.1 Installation of the product version

Please be sure to register the license key by using the license management tool*¹ after software installation.

*1 Node Locked License: License manager

Floating License: Floating License Server

3.1.2 Administrator privileges

Windows administrator privileges are required to install the software.

3.1.3 Execution environment

Internet Explorer 7 (or later), the Microsoft .NET Framework and the Microsoft Visual C++ runtime libraries are required to run the installer. If the Microsoft .NET Framework or the Microsoft Visual C++ runtime libraries are not installed, the CS+ IDE Package installer will install them.

3.1.4 Network drives

The software cannot be installed from a network drive.

It also cannot be installed on a network drive.

3.1.5 Installation folder name

The available characters for specifying the installation folder are the same as for Windows.

The 12 characters / * : < > ? | " \ ; , # and %*nn* (*n*: number of hexadecimal) cannot be used. Folder names also cannot start or end with a space.

3.1.6 Required files after installation

The following folder is created after installation. Do not delete it because it contains files that are necessary for the tools to run.

(32-bit Windows, and installation drive is C:)

C:\Program Files\Common Files\Renesas Electronics CubeSuite+

(64-bit Windows, and installation drive is C:)

C:\Program Files (x86)\Common Files\Renesas Electronics CubeSuite+

3.1.7 Modifying and repairing functions

To modify or repair the function of a tool that has already been installed, have the tool's installer package on hand, and run the installation program. The program maintenance program will start; select **Modify** or **Repair**.

Clicking on [Apps & features] from [Settings] of Windows or [Programs and Features] of the control panel will cause an error.

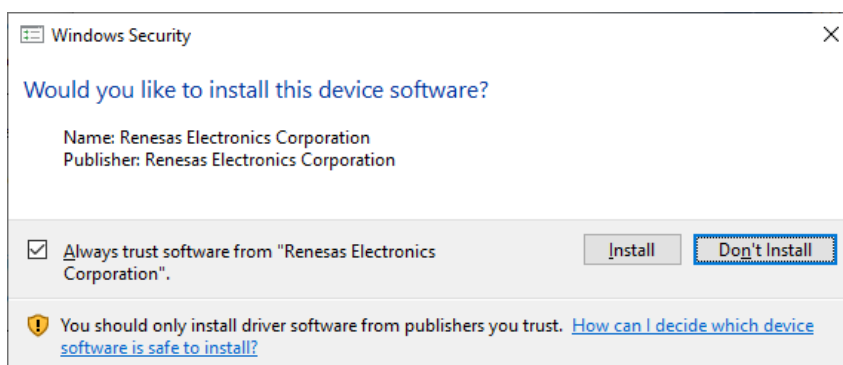
3.1.8 Changing the installation folder

To change the folder that tools are installed to, you must first uninstall all tools, and then perform installation again.

To uninstall all tools, start the Integrated Uninstaller, and delete all the tools that are displayed.

3.1.9 Warning message page when installing the USB driver

Windows 7, Windows 8.1 and Windows 10 will display a Windows security warning when installing the USB driver. Select "Install this driver" and continue with the installation.



3.1.10 Installing the USB driver

The USB drivers for the IE850, IECUBE, MINICUBE, MINICUBE2, E1, E20, E2 and E2 Lite will be installed via plug & play when a device is actually connected.

3.1.11 Updating the USB driver

If an IE850, IECUBE, MINICUBE, MINICUBE2, or E1, E20, E2 or E2 Lite is connected via USB, disconnect it before updating the USB driver.

3.1.12 USB driver of the E1 emulator

The selection for installing a USB driver for the E1 emulator is specified at the end of the integrated installer.

The update feature in the Update Manager is also not supported.

3.1.13 Version of installed tools

If a newer version of the tool is already installed, the older version tool may not be installed.

3.1.14 Starting the installer

If the installer is started on a non-Japanese version of Windows, then path names containing multi-byte characters will cause an error, and the installer will not start.

3.1.15 Changing the structure of the installation folder

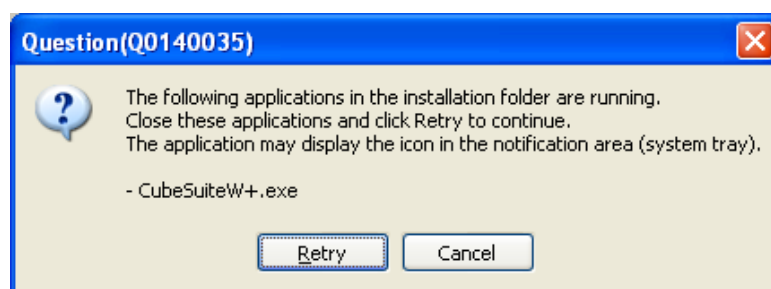
If you manually change the installation folder structure (e.g. delete one or more folders), then the Repair installer may start if you double click on a file with the .mtpj extension associated with CS+.

Either start CS+ and load a project without using the extension association feature, or reinstall CS+ completely.

3.1.16 Rapid Start Feature

CS+ is registered with the Startup menu of Windows during installation.

If a CS+ instance launched via Rapid Start is in the notification area (system tray) during installation, the following error message will appear. Exit the application and run the installer again.



3.1.17 Free Evaluation Version

If you install the free evaluation version downloaded from the Internet, make sure that your host machine is connected to the network before installing the program. If you wish to install the program on a host machine that is not connected to the network, first go to the Microsoft Download Center and install the Microsoft .NET Framework 4.5.2 before installing CS+.

3.2 Points for caution regarding uninstallation

3.2.1 Administrator privileges

Windows administrator privileges are required to uninstall the software.

3.2.2 Uninstallation folder name

Depending on the order in which tools are uninstalled, the folders may not be completely deleted. If this happens, remove any remaining folders via Explorer or the like.

3.2.3 Adding/repairing other than via the installer

If you added or modified files to the folders in which tools and release notes were installed using other means than the installers, they cannot be deleted during uninstallation.

3.2.4 Uninstalling the USB driver

If you uninstall the USB driver, you will be able to connect the emulator to ports to which connections have been made before the Uninstallation, but you will not be able to connect it to other ports to which connections have not been made.

3.2.5 Uninstalling the Renesas E-Series USB driver

The CS+ uninstaller cannot uninstall the Renesas E-Series USB driver.

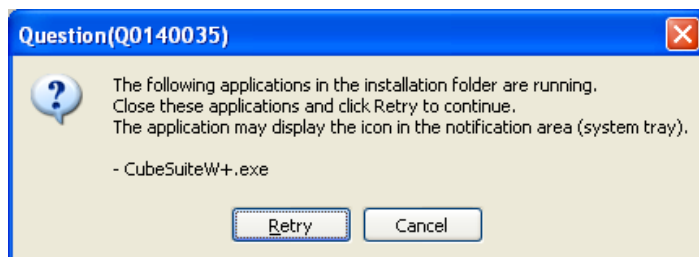
When uninstalling the Renesas E-Series USB driver, please uninstall [Renesas E-Series USB Driver] and [(Windows Driver Package - Renesas Electronics Corporation E1USB) Renesas Emulator (xx/xx/xxxxy.y.yy.yyy) ("x" for a date and "y" for a version number)] manually from the list of [Programs and Features] of the Control Panel.

The Renesas E-Series USB driver is a common USB driver for emulators which are used with the High-Performance Embedded Workshop (HEW) and Flash Development Toolkit (FDT) environments. If the Renesas E-Series USB driver is uninstalled in a PC environment in which CS+ and HEW or FDT are installed, emulators will no longer be connectable to the HEW and FDT environments. The relevant emulators are the following.

E1, E20, E10A-USB, E10T-USB, E30, E30A, E100, E200F, E7, E8

3.2.6 Rapid Start Feature

If a CS+ instance launched via Rapid Start is in the notification area (system tray) during uninstallation, the following error will appear. Exit the application and run the uninstaller again.



3.2.7 Microsoft Tools

The CS+ uninstaller will not uninstall the Microsoft .NET Framework or the Microsoft Visual C++ runtime library. If you wish to uninstall them, do so by opening [Apps & features] from [Settings] of Windows or [Programs and Features] of the control panel.

Chapter 4. Collection of User Information

Applications included in this package may access the Renesas Web site. In such cases, the following information is collected and recorded as a log.

- Date and time of access
- Access to URLs and files
- Unique and random Globally Unique Identifier (GUID) associated with your PC
- Types and version numbers of Windows, CS+, and the Renesas compiler you are using
- Types of Renesas emulator and MCU you are using
- The unique certificate number linked to your account for MyRenesas (only when you log in to MyRenesas)
- The unique identification number linked to cookies for the Web browser (if you are in Europe, this is only the case when you opt-in to the use of cookies). For details on cookies, refer to the privacy policy page stated below.

Logs are managed based on our privacy policy.

Refer to our privacy policy on the following Web page.

Privacy Policy:

<https://www.renesas.com/privacy.html>

Chapter 5. Release Notes

Release notes contain notes, points for caution, and statements of restrictions on using the features of CS+. Please read these documents before using CS+.

These documents can be accessed from the Windows Start menu after installation.

Renesas Electronics CS+ → README

Remark In Windows 8.1, double-click on the CS+ icon on the Apps screen.

Since this release note is not installed with the CS+ package, manually save the file on your host machine.

Appendix Supported Devices and Tools

This appendix gives a link to a page that includes descriptions of the supported devices and tools.

The latest information is available from our Web site.

Please see the following URL.

CS+ Product Page:

<https://www.renesas.com/cs+>

Functions Supported by CS+

This is information about the following version of CS+ (modules), etc. (8/2020)

| Product/module name | Version |
|----------------------------------------------|-------------|
| CS+ for CC | V8.03.00 |
| Integrated Development Environment Framework | V8.04.00.06 |
| Debug Tool Common Interface | V8.04.00.03 |
| Device Information Common Interface | V9.04.00.03 |
| CC-RL | V1.09.00 |
| CC-RX | V3.02.00 |
| CC-RH | V2.02.00 |
| CC-RL Plug-in | V8.04.00.01 |
| CC-RX Plug-in | V8.04.00.02 |
| CC-RH Plug-in | V8.04.00.01 |
| QHS CCRH850 Plug-in | V1.04.00.01 |
| Debugger Collection Plug-in | V8.04.00.03 |
| RL78 Instruction Simulator | V5.02.00.04 |
| RH850 Instruction Simulator | V5.02.00.03 |
| RX Instruction Simulator | V3.02.00 |
| RL78G10 Simulator | V3.01.00.02 |
| RL78G11 Simulator | V2.01.00.02 |
| RL78G12 Simulator | V2.01.00.02 |
| RL78G13,RL78G13A Simulator | V2.01.00.02 |
| RL78G14 Simulator | V2.01.00.02 |
| RL78L12 Simulator | V1.01.00.02 |
| RL78G1F Simulator | V1.00.00.02 |
| Code Generator Plug-in | V4.08.04.01 |
| Code Generator/PinView Plug-in | V2.10.05.01 |
| RL78G10 Code Library | V1.05.03.02 |
| RL78G12 Code Library | V2.04.04.02 |
| RL78G13 Code Library | V2.05.04.02 |
| RL78G14 Code Library | V2.05.04.02 |
| RL78L1A Code Library | V2.04.03.01 |
| RL78G1A Code Library | V2.04.02.02 |
| RL78F12 Code Library | V2.04.04.02 |
| RL78L12 Code Library | V2.04.02.01 |
| RL78L13 Code Library | V1.04.02.03 |
| RL78F13 Code Library | V2.03.05.02 |
| RL78F14 Code Library | V2.03.05.02 |
| RL78G10 Code Library | V1.03.02.01 |
| RL78G1E Code Library | V1.04.02.04 |
| RL78L1C Code Library | V1.03.01.04 |
| RL78G1G Code Library | V1.01.01.03 |
| RL78G1F Code Library | V1.01.03.02 |
| RL78I1B Code Library | V1.03.02.03 |
| RL78I1D Code Library | V1.01.03.02 |
| RL78G10 Code Library | V1.01.02.03 |
| RL78I1E Code Library | V1.03.03.02 |
| RL78F15 Code Library | V1.01.05.02 |
| RL78I1C Code Library | V1.01.04.02 |
| RL78G11 Code Library | V1.01.03.02 |
| RL78G11 Code Library | V1.02.03.02 |
| RL78L1A Code Library | V1.01.03.01 |
| RL78H1D Code Library | V1.00.00.05 |
| RL78F1E Code Library | V1.01.04.02 |
| RX110/RX111 Code Library | V1.06.02.04 |
| RX113 Code Library | V1.03.02.04 |
| RX68M Code Library | V1.03.02.03 |
| RX71M Code Library | V1.01.02.03 |
| RX23T Code Library | V1.01.02.04 |
| RX231 Code Library | V1.01.02.05 |
| RX130 Code Library | V1.01.02.04 |
| RX24T/RX24U Code Library | V1.03.02.04 |
| RX65NR/X651 Code Library | V1.01.02.03 |
| RH850/F1K Code Library | V1.02.02.02 |
| RH850E11 Code Library | V1.01.02.02 |
| RH850E1M-S,E1M-S2 Code Library | V1.01.02.02 |
| Pin Configurator Plug-in | V1.54.01.01 |
| Program Analyzer Plug-in | V4.11.00.01 |
| IronPython Console Plug-in | V1.40.00.02 |
| Editor plug-in DLL | V1.16.00.03 |
| Stack Usage Tracer | V1.05.00.02 |
| Update Manager Plug-in | V2.03.00.02 |
| Quick and Effective tool solution - QE | V9.04.00.08 |
| Device Information RX | V3.04.00 |
| Device Information RH850 | V8.04.00 |
| Device Information RL78 | V8.04.00 |
| I/O Header File Generation Tool | V1.13.00.01 |

| Product/module name | Version |
|----------------------------------------------|-------------|
| CS+ for CACX | V4.04.00 |
| Integrated Development Environment Framework | V5.05.00.02 |
| Debug Tool Common Interface | V8.04.00.03 |
| Device Information Common Interface | V5.00.00.01 |
| CA850 | V3.50 |
| CA78K0 | V1.30 |
| CA78K0R | V1.72 |
| CX | V1.31 |
| CA850 Plug-in | V5.01.00.01 |
| CA78K0 Plug-in | V5.00.00.02 |
| CA78K0R Plug-in | V5.00.00.03 |
| CX Plug-in | V5.00.00.02 |
| 78K0 Emulator Plug-in | V4.03.00.01 |
| RL78 78K0R Emulator Plug-in | V4.03.00.01 |
| V850 Emulator Plug-in | V4.03.00.01 |
| V850E2M Emulator Plug-in | V4.03.00.01 |
| 78K0 Simulator Plug-in | V4.03.00.01 |
| RL78 78K0R Simulator Plug-in | V4.03.00.01 |
| V850 Simulator Plug-in | V4.03.00.01 |
| V850E2M Simulator Plug-in | V4.03.00.01 |
| 78K0 Instruction Simulator | V3.07.00.01 |
| 78K0R Instruction Simulator | V3.07.00.01 |
| RL78 Instruction Simulator | V3.07.00.01 |
| V850 Instruction Simulator | V3.07.00.01 |
| V850E2M Instruction Simulator | V3.07.00.01 |
| 78K0K2 Simulator | V3.00.03.01 |
| 78K0R/K3 Simulator | V3.01.00.01 |
| 78K0R/K3 Simulator | V3.01.00.01 |
| 78K0R/K3 Simulator | V3.01.00.01 |
| RL78/G10 Simulator | V1.03.00.01 |
| V850ES/Sx2 Simulator | V3.00.03.02 |
| V850ES/Sx2 Simulator | V3.00.03.02 |
| V850ES/Sx3 Simulator | V3.00.03.02 |
| Code Generator Plug-in | V3.08.04.01 |
| Code Generator/PinView Plug-in | V1.10.05.01 |
| 78K0Kx-1 Code Library | V3.02.00.01 |
| 78K0K2 Code Library | V3.02.00.01 |
| 78K0R/K3 Code Library | V3.03.00.01 |
| 78K0R/K3-L Code Library | V3.02.00.01 |
| 78K0R/K3 Code Library | V3.02.00.01 |
| 78K0R/K3-A Code Library | V3.02.00.01 |
| 78K0R/K3 Code Library | V3.02.00.01 |
| 78K0R/K3 Code Library | V3.02.00.01 |
| RL78G10 Code Library | V1.05.03.02 |
| RL78G12 Code Library | V2.04.04.02 |
| RL78G13 Code Library | V2.05.04.02 |
| RL78G14 Code Library | V2.05.04.02 |
| RL78I1A Code Library | V2.04.03.01 |
| RL78G1A Code Library | V2.04.02.02 |
| RL78F12 Code Library | V2.04.04.02 |
| RL78L13 Code Library | V2.04.02.01 |
| RL78L13 Code Library | V1.04.02.03 |
| RL78F13 Code Library | V2.03.05.02 |
| RL78F14 Code Library | V2.03.05.02 |
| RL78G10 Code Library | V1.03.02.01 |
| RL78G1E Code Library | V1.04.02.04 |
| RL78L1C Code Library | V1.03.01.04 |
| RL78G1G Code Library | V1.01.01.03 |
| RL78G1F Code Library | V1.01.03.02 |
| RL78I1B Code Library | V1.03.02.03 |
| RL78I1D Code Library | V1.01.03.02 |
| RL78G10 Code Library | V1.01.02.03 |
| RL78I1E Code Library | V1.03.03.02 |
| RL78F15 Code Library | V1.01.05.02 |
| RL78I1C Code Library | V1.01.04.02 |
| RL78G11 Code Library | V1.01.03.02 |
| RL78G11 Code Library | V1.02.03.02 |
| RL78L1A Code Library | V1.01.03.01 |
| RL78H1D Code Library | V1.00.00.05 |
| RL78F1E Code Library | V1.01.04.02 |
| RL78L13 Code Library | V1.04.02.03 |
| RL78F13 Code Library | V2.03.05.02 |
| RL78F14 Code Library | V2.03.05.02 |
| RL78G10 Code Library | V1.03.02.01 |
| RL78G1E Code Library | V1.04.02.04 |
| RL78L1C Code Library | V1.03.01.04 |
| RL78G1G Code Library | V1.01.01.03 |
| RL78G1F Code Library | V1.01.03.02 |
| RL78I1B Code Library | V1.03.02.03 |
| RL78I1D Code Library | V1.01.05.02 |
| RL78I1C Code Library | V1.01.04.02 |
| RL78G10 Code Library | V1.01.03.02 |
| RL78G1D Code Library | V1.01.02.03 |
| RL78I1E Code Library | V1.03.03.02 |
| RL78F15 Code Library | V1.01.05.02 |
| RL78L1A Code Library | V1.01.03.01 |
| RL78H1D Code Library | V1.00.00.05 |
| RL78F1E Code Library | V1.01.04.02 |
| V850ES/Jx3 Code Library | V3.02.00.01 |
| V850E/Sx3-H Code Library | V3.02.00.01 |
| V850E/Sx3-E Code Library | V3.02.00.01 |
| V850ES/Jx3-H Code Library | V3.02.00.01 |
| Pin Configurator Plug-in | V1.54.01.01 |
| Program Analyzer Plug-in | V4.03.00.05 |
| IronPython Console Plug-in | V1.27.00.07 |
| Editor plug-in DLL | V1.06.00.04 |
| Stack Usage Tracer | V1.05.00.02 |
| Tool Interface Protocol (TIP) Plug-in | V1.24.00.02 |
| Update Manager Plug-in | V2.02.00.05 |
| Device Information RL78 | V8.04.00 |
| Device Information 78K | V3.00.00 |
| Device Information V850 | V3.00.00 |

CS+ for CC supports the devices checked in "CC" of compiler column.
 CS+ for CA,CX supports the devices checked in "CA" or "CX" of compiler column.

✓ - supported; X - not supported; - Support not planned; Note Refer to the User's Manual of the target device.

| Microcontroller | Nickname/Group | Product Name | Pins, Package type | Supported functions | | | | | | | | | | | | Device Specification Name | Default Link Directive Information (78K) | | | | Additional information | | | |
|-----------------|----------------|--------------|--------------------|---------------------|----------------|------------------|-------------|-------------|-------------|--------------------|-----------|----------|---------|----|----------------------------------------------------|---------------------------|------------------------------------------|-------------------------|---------------------------------------------|---------------------------------|------------------------|-------------------|-------------------------|-------|
| | | | | Smart Configurator | Code Generator | Pin Configurator | Compiler | | | Emulator | | | | | Peripheral Simulator, Simulator supporting OS: Win | | ROM Start address, Size | RAM Start address, Size | Other Memory Area Name, Start address, Size | Device Information File version | | | | |
| | | | | | | | CA Compiler | CX Compiler | CC Compiler | IECUBE, E850, E850 | MINICUBE2 | MINICUBE | E1, E20 | E2 | | | | | | E2 Lite | | *.Productlist.xml | *.78k or *.800 or *.DVF | *.ddi |
| 78K0 | 78K0KC2 | μPD78F0513A | 38MC | X | X | X | ✓ | - | - | ✓ | ✓ | - | Serial | - | - | ✓ | F051338 | 0,8000H | 0FB00H,500H | - | V3.000000 | V2.21 | X | - |
| 78K0 | 78K0KC2 | μPD78F0513A | 44GB | X | X | X | ✓ | - | - | ✓ | ✓ | - | Serial | - | - | ✓ | F051344 | 0,8000H | 0FB00H,500H | - | V3.000000 | V2.21 | X | - |

| Microcontroller | Nickname/Group | Product Name | Pins, Package type | Smart Configurator | Code Generator | Pin Configurator | Supported functions | | | | | | | | | | Device Specification Name | Default Link Directive Information (78K) | | | Device Information File version | | | Additional information |
|-----------------|----------------|--------------|-------------------------------|--------------------|----------------|------------------|---------------------|-------------|-------------|----------------------|-----------|----------|---------|----|---------|---|---------------------------|------------------------------------------|-------------------------|----------------------------------------------------------------------------------------------------------------------------------------------------------------------|---------------------------------|-------------------------|-------|------------------------|
| | | | | | | | Compiler | | | Emulator | | | | | | | | ROM Start address, Size | RAM Start address, Size | Other Memory Area Name, Start address, Size | *_Productlist.xml | *_78k or *_800 or *_DVF | *_ddi | |
| | | | | | | | CA Compiler | CX Compiler | CC Compiler | IECUBE, IE850, IE850 | MINICUBE2 | MINICUBE | E1, E20 | E2 | E2 Lite | | | | | | | | | |
| 78K0 | 78K0/KE2 | μPD78F0537D | 64GA,64GB,64GC,64GK,64F1,64FC | X | X | X | ✓ | - | - | ✓ | ✓ | - | Serial | - | - | ✓ | F053764 | 0.C000H | 0FB00H,500H | IXRAM, 0E000H, 1800H BANK0, 08000H, 4000H BANK1, 18000H, 4000H BANK2, 28000H, 4000H BANK3, 28000H, 4000H BANK4, 28000H, 4000H BANK5, 28000H, 4000H | V3.000000 | V2.21 | X | - |

| Microcontroller | Nickname/Group | Product Name | Pins, Package type | Supported functions | | | | | | | | | | | | | Device Specification Name | Default Link Directive | | Other Memory Area Name, Start address, Size | Device Information File version | | | Additional information |
|-----------------|----------------|--------------|-------------------------------|---------------------|----------------|------------------|-------------|-------------|-------------|----------------------|-----------|----------|--------------------------------------------|-------------------------|-------------------------|-------------------|---------------------------|-------------------------|-------------|--------------------------------------------------------------------------------------------------------------------------------------------------|---------------------------------|-------|---------|------------------------|
| | | | | Smart Configurator | Code Generator | Pin Configurator | Compiler | | | Emulator | | | Preloader (Device/Debugger supporting DFU) | ROM Start address, Size | RAM Start address, Size | *_Productlist.xml | | *_78k or *_800 or *_DVF | *_ddi | | | | | |
| | | | | | | | CA Compiler | CX Compiler | CC Compiler | IECUBE, IE850, IE850 | MINICUBE2 | MINICUBE | | | | | | | | | E1,E20 | E2 | E2 Lite | |
| 78K0 | 78K0KE2 | µPD78F0537DA | 64GA,64GB,64GC,64GK,64F1,64FC | X | X | X | ✓ | – | – | ✓ | ✓ | – | Serial | – | – | ✓ | F053764 | 0,8000H | 0FB00H,500H | DRAM, 0E000H, 1800H, 08000H, 4000H, BANK1, 18000H, 4000H, BANK2, 28000H, 4000H, BANK3, 28000H, 4000H, BANK4, 28000H, 4000H, BANK5, 28000H, 4000H | V3.000000 | V2.21 | X | – |
| 78K0 | 78K0KF2 | µPD78F0544 | 80GC,80GK | X | X | X | ✓ | – | – | ✓ | ✓ | – | Serial | – | – | ✓ | F054480 | 0,C000H | 0FB00H,500H | DRAM, 0F400H, 400H, LRAM, 0FA00H, 20H | V3.000000 | V2.21 | X | – |
| 78K0 | 78K0KF2 | µPD78F0545 | 80GC,80GK | X | X | X | ✓ | – | – | ✓ | ✓ | – | Serial | – | – | ✓ | F054580 | 0,0F000H | 0FB00H,500H | DRAM, 0F000H, 800H, LRAM, 0FA00H, 20H | V3.000000 | V2.21 | X | – |
| 78K0 | 78K0KF2 | µPD78F0545A | 80GC,80GK | X | X | X | ✓ | – | – | ✓ | ✓ | – | Serial | – | – | ✓ | F054580 | 0,0F000H | 0FB00H,500H | DRAM, 0F000H, 800H, LRAM, 0FA00H, 20H | V3.000000 | V2.21 | X | – |
| 78K0 | 78K0KF2 | µPD78F0546 | 80GC,80GK | X | X | X | ✓ | – | – | ✓ | ✓ | – | Serial | – | – | ✓ | F054680 | 0,C000H | 0FB00H,500H | DRAM, 0E800H, 1000H, LRAM, 0FA00H, 20H | V3.000000 | V2.21 | X | – |
| 78K0 | 78K0KF2 | µPD78F0546A | 80GC,80GK | X | X | X | ✓ | – | – | ✓ | ✓ | – | Serial | – | – | ✓ | F054680 | 0,C000H | 0FB00H,500H | DRAM, 0E800H, 1000H, LRAM, 0FA00H, 20H | V3.000000 | V2.21 | X | – |
| 78K0 | 78K0KF2 | µPD78F0547 | 80GC,80GK | X | X | X | ✓ | – | – | ✓ | ✓ | – | Serial | – | – | ✓ | F054780 | 0,8000H | 0FB00H,500H | DRAM, 0E000H, 1800H, LRAM, 0FA00H, 20H | V3.000000 | V2.21 | X | – |
| 78K0 | 78K0KF2 | µPD78F0547A | 80GC,80GK | X | X | X | ✓ | – | – | ✓ | ✓ | – | Serial | – | – | ✓ | F054780 | 0,C000H | 0FB00H,500H | DRAM, 0E000H, 1800H, LRAM, 0FA00H, 20H | V3.000000 | V2.21 | X | – |
| 78K0 | 78K0KF2 | µPD78F0547D | 80GC,80GK | X | X | X | ✓ | – | – | ✓ | ✓ | – | Serial | – | – | ✓ | F054780 | 0,C000H | 0FB00H,500H | DRAM, 0E000H, 1800H, LRAM, 0FA00H, 20H | V3.000000 | V2.21 | X | – |
| 78K0 | 78K0KF2 | µPD78F0547DA | 80GC,80GK | X | X | X | ✓ | – | – | ✓ | ✓ | – | Serial | – | – | ✓ | F054780 | 0,C000H | 0FB00H,500H | DRAM, 0E000H, 1800H, LRAM, 0FA00H, 20H | V3.000000 | V2.21 | X | – |
| 78K0 | 78K0FC2 | µPD78F0881 | 44GB | X | X | X | ✓ | – | – | ✓ | ✓ | – | Serial | – | – | X | F0881 | 0,8000H | 0FB00H,500H | DRAM, 0F400H, 400H, LRAM, 0FA00H, 100H | V3.000000 | V1.01 | X | – |
| 78K0 | 78K0FC2 | µPD78F0881A | 44GB | X | X | X | ✓ | – | – | ✓ | ✓ | – | Serial | – | – | X | F0881 | 0,8000H | 0FB00H,500H | DRAM, 0F400H, 400H, LRAM, 0FA00H, 100H | V3.000000 | V1.01 | X | – |
| 78K0 | 78K0FC2 | µPD78F0882 | 44GB | X | X | X | ✓ | – | – | ✓ | ✓ | – | Serial | – | – | X | F0882 | 0,C000H | 0FB00H,500H | DRAM, 0F000H, 800H, LRAM, 0FA00H, 100H | V3.000000 | V1.01 | X | – |
| 78K0 | 78K0FC2 | µPD78F0882A | 44GB | X | X | X | ✓ | – | – | ✓ | ✓ | – | Serial | – | – | X | F0882 | 0,C000H | 0FB00H,500H | DRAM, 0F000H, 800H, LRAM, 0FA00H, 100H | V3.000000 | V1.01 | X | – |
| 78K0 | 78K0FC2 | µPD78F0883 | 44GB | X | X | X | ✓ | – | – | ✓ | ✓ | – | Serial | – | – | X | F0883 | 0,F000H | 0FB00H,500H | DRAM, 0F000H, 800H, LRAM, 0FA00H, 100H | V3.000000 | V1.01 | X | – |
| 78K0 | 78K0FC2 | µPD78F0883A | 44GB | X | X | X | ✓ | – | – | ✓ | ✓ | – | Serial | – | – | X | F0883 | 0,F000H | 0FB00H,500H | DRAM, 0F000H, 800H, LRAM, 0FA00H, 100H | V3.000000 | V1.01 | X | – |
| 78K0 | 78K0FC2 | µPD78F0884 | 48GA | X | X | X | ✓ | – | – | ✓ | ✓ | – | Serial | – | – | X | F0884 | 0,8000H | 0FB00H,500H | DRAM, 0F400H, 400H, LRAM, 0FA00H, 100H | V3.000000 | V1.01 | X | – |
| 78K0 | 78K0FC2 | µPD78F0884A | 48GA | X | X | X | ✓ | – | – | ✓ | ✓ | – | Serial | – | – | X | F0884 | 0,8000H | 0FB00H,500H | DRAM, 0F400H, 400H, LRAM, 0FA00H, 100H | V3.000000 | V1.01 | X | – |
| 78K0 | 78K0FC2 | µPD78F0885 | 48GA | X | X | X | ✓ | – | – | ✓ | ✓ | – | Serial | – | – | X | F0885 | 0,C000H | 0FB00H,500H | DRAM, 0F000H, 800H, LRAM, 0FA00H, 100H | V3.000000 | V1.01 | X | – |
| 78K0 | 78K0FC2 | µPD78F0885A | 48GA | X | X | X | ✓ | – | – | ✓ | ✓ | – | Serial | – | – | X | F0885 | 0,C000H | 0FB00H,500H | DRAM, 0F000H, 800H, LRAM, 0FA00H, 100H | V3.000000 | V1.01 | X | – |
| 78K0 | 78K0FC2 | µPD78F0886 | 48GA | X | X | X | ✓ | – | – | ✓ | ✓ | – | Serial | – | – | X | F0886 | 0,0F000H | 0FB00H,500H | DRAM, 0F000H, 800H, LRAM, 0FA00H, 100H | V3.000000 | V1.01 | X | – |
| 78K0 | 78K0FC2 | µPD78F0886A | 48GA | X | X | X | ✓ | – | – | ✓ | ✓ | – | Serial | – | – | X | F0886 | 0,0F000H | 0FB00H,500H | DRAM, 0F000H, 800H, LRAM, 0FA00H, 100H | V3.000000 | V1.01 | X | – |
| 78K0 | 78K0FC2 | µPD78F0894A | 48GA | X | X | X | ✓ | – | – | ✓ | ✓ | – | Serial | – | – | X | F0894A | 0,C000H | 0FB00H,500H | DRAM, 0E800H, 1000H, LRAM, 0FA00H, 100H | V3.000000 | V1.11 | X | – |
| 78K0 | 78K0FC2 | µPD78F0895A | 48GA | X | X | X | ✓ | – | – | ✓ | ✓ | – | Serial | – | – | X | F0895A | 0,C000H | 0FB00H,500H | DRAM, 0E000H, 1800H, LRAM, 0FA00H, 100H | V3.000000 | V1.11 | X | – |
| 78K0 | 78K0FE2 | µPD78F0887 | 64GB,64GK | X | X | X | ✓ | – | – | ✓ | ✓ | – | Serial | – | – | X | F0887 | 0,C000H | 0FB00H,500H | DRAM, 0F000H, 800H, LRAM, 0FA00H, 100H | V3.000000 | V1.01 | X | – |
| 78K0 | 78K0FE2 | µPD78F0887A | 64GB,64GK | X | X | X | ✓ | – | – | ✓ | ✓ | – | Serial | – | – | X | F0887 | 0,C000H | 0FB00H,500H | DRAM, 0F000H, 800H, LRAM, 0FA00H, 100H | V3.000000 | V1.01 | X | – |
| 78K0 | 78K0FE2 | µPD78F0888 | 64GB,64GK | X | X | X | ✓ | – | – | ✓ | ✓ | – | Serial | – | – | X | F0888 | 0,0F000H | 0FB00H,500H | DRAM, 0F000H, 800H, LRAM, 0FA00H, 100H | V3.000000 | V1.01 | X | – |
| 78K0 | 78K0FE2 | µPD78F0888A | 64GB,64GK | X | X | X | ✓ | – | – | ✓ | ✓ | – | Serial | – | – | X | F0888 | 0,0F000H | 0FB00H,500H | DRAM, 0F000H, 800H, LRAM, 0FA00H, 100H | V3.000000 | V1.01 | X | – |

| Microcontroller | Nickname/Group | Product Name | Pins, Package type | Smart Configurator | Code Generator | Pn Configurator | Supported functions | | | | | | Emulator | E1 | E2 | E2 Lite | Processor (Device) / Device supporting OS Time | Device Specification Name | ROM Start address, Size | RAM Start address, Size | Default Link Directive | Other Memory Area Name, Start address, Size | Device Information File version | | | Additional information |
|-----------------|----------------|--------------|--------------------|--------------------|----------------|-----------------|---------------------|-------------|-------------|----------------------|-----------|----------|----------|----|----|---------|------------------------------------------------|---------------------------|-------------------------|-------------------------|------------------------|------------------------------------------------------------------------------------------------------------------------------------------------------------------|---------------------------------|-------------------------|-------|------------------------|
| | | | | | | | CA Compiler | CX Compiler | CC Compiler | IECUBE, IE850, IE850 | MINICUBE2 | MINICUBE | | | | | | | | | | | *.Productlist.xml | *.78k or *.800 or *.DVF | *.ddi | |
| 78K0 | 78K0/FE2 | μPD78F0889 | 64GB,64GK | X | X | X | ✓ | — | — | ✓ | ✓ | — | Serial | — | — | — | X | F0889 | 0.C000H | 0FB00H,500H | | DRAM, 0E000H, 1000H LRAM, 0FA00H, 100H BANK0, 0800H, 4000H BANK1, 18000H, 4000H BANK2, 28000H, 4000H BANK3, 38000H, 4000H | V3.00000 | V1.01 | X | — |
| 78K0 | 78K0/FE2 | μPD78F0889A | 64GB,64GK | X | X | X | ✓ | — | — | ✓ | ✓ | — | Serial | — | — | — | X | F0889 | 0.C000H | 0FB00H,500H | | DRAM, 0E000H, 1000H LRAM, 0FA00H, 100H BANK0, 0800H, 4000H BANK1, 18000H, 4000H BANK2, 28000H, 4000H BANK3, 38000H, 4000H | V3.00000 | V1.01 | X | — |
| 78K0 | 78K0/FE2 | μPD78F0890 | 64GB,64GK | X | X | X | ✓ | — | — | ✓ | ✓ | — | Serial | — | — | — | X | F0890 | 0.C000H | 0FB00H,500H | | DRAM, 0E000H, 1000H LRAM, 0FA00H, 100H BANK0, 0800H, 4000H BANK1, 18000H, 4000H BANK2, 28000H, 4000H BANK3, 38000H, 4000H BANK4, 48000H, 4000H | V3.00000 | V1.01 | X | — |
| 78K0 | 78K0/FE2 | μPD78F0890A | 64GB,64GK | X | X | X | ✓ | — | — | ✓ | ✓ | — | Serial | — | — | — | X | F0890 | 0.C000H | 0FB00H,500H | | DRAM, 0E000H, 1000H LRAM, 0FA00H, 100H BANK0, 0800H, 4000H BANK1, 18000H, 4000H BANK2, 28000H, 4000H BANK3, 38000H, 4000H BANK4, 48000H, 4000H | V3.00000 | V1.01 | X | — |
| 78K0 | 78K0/FF2 | μPD78F0891 | 80GC,80GK | X | X | X | ✓ | — | — | ✓ | ✓ | — | Serial | — | — | — | X | F0891 | 0.0F000H | 0FB00H,500H | | DRAM, 0E000H, 1800H LRAM, 0FA00H, 100H BANK0, 0800H, 4000H BANK1, 18000H, 4000H BANK2, 28000H, 4000H BANK3, 38000H, 4000H | V3.00000 | V1.01 | X | — |
| 78K0 | 78K0/FF2 | μPD78F0891A | 80GC,80GK | X | X | X | ✓ | — | — | ✓ | ✓ | — | Serial | — | — | — | X | F0891 | 0.0F000H | 0FB00H,500H | | DRAM, 0E000H, 1800H LRAM, 0FA00H, 100H BANK0, 0800H, 4000H BANK1, 18000H, 4000H BANK2, 28000H, 4000H BANK3, 38000H, 4000H | V3.00000 | V1.01 | X | — |
| 78K0 | 78K0/FF2 | μPD78F0892 | 80GC,80GK | X | X | X | ✓ | — | — | ✓ | ✓ | — | Serial | — | — | — | X | F0892 | 0.C000H | 0FB00H,500H | | DRAM, 0E000H, 1000H LRAM, 0FA00H, 100H BANK0, 0800H, 4000H BANK1, 18000H, 4000H BANK2, 28000H, 4000H BANK3, 38000H, 4000H | V3.00000 | V1.01 | X | — |
| 78K0 | 78K0/FF2 | μPD78F0892A | 80GC,80GK | X | X | X | ✓ | — | — | ✓ | ✓ | — | Serial | — | — | — | X | F0892 | 0.C000H | 0FB00H,500H | | DRAM, 0E000H, 1000H LRAM, 0FA00H, 100H BANK0, 0800H, 4000H BANK1, 18000H, 4000H BANK2, 28000H, 4000H BANK3, 38000H, 4000H | V3.00000 | V1.01 | X | — |
| 78K0 | 78K0/FF2 | μPD78F0893 | 80GC,80GK | X | X | X | ✓ | — | — | ✓ | ✓ | — | Serial | — | — | — | X | F0893 | 0.C000H | 0FB00H,500H | | DRAM, 0E000H, 1800H LRAM, 0FA00H, 100H BANK0, 0800H, 4000H BANK1, 18000H, 4000H BANK2, 28000H, 4000H BANK3, 38000H, 4000H BANK4, 48000H, 4000H | V3.00000 | V1.01 | X | — |
| 78K0 | 78K0/FF2 | μPD78F0893A | 80GC,80GK | X | X | X | ✓ | — | — | ✓ | ✓ | — | Serial | — | — | — | X | F0893 | 0.C000H | 0FB00H,500H | | DRAM, 0E000H, 1800H LRAM, 0FA00H, 100H BANK0, 0800H, 4000H BANK1, 18000H, 4000H BANK2, 28000H, 4000H BANK3, 38000H, 4000H BANK4, 48000H, 4000H | V3.00000 | V1.01 | X | — |

| Microcontroller | Nickname/Group | Product Name | Pins, Package type | Supported functions | | | | | | | | | | | | Device Specification Name | Default Link Directive Information (78K) | | | | Additional information | | |
|-----------------|----------------|--------------|--------------------|---------------------|----------------|------------------|-------------|-------------|-------------|-------------------|-----------|----------|---------|----|-------------------------------------------------|---------------------------|------------------------------------------|-------------------------|---------------------------------------------|---------------------------------|------------------------|-------------------|-------------------------|
| | | | | Smart Configurator | Code Generator | Pin Configurator | Compiler | | | Emulator | | | | | Peripheral Devices/Devices supporting OS Thread | | ROM Start address, Size | RAM Start address, Size | Other Memory Area Name, Start address, Size | Device Information File version | | | |
| | | | | | | | CA Compiler | CX Compiler | CC Compiler | ICUBE, E850, E850 | MINICUBE2 | MINICUBE | E1, E20 | E2 | | | | | | E2 Lite | | *.Productlist.xml | *.78k or *.800 or *.DVF |
| 78K0 | 78K0KC2-L | μPD78F0588 | 48GA | X | ✓ | ✓ | ✓ | — | ✓ | ✓ | — | Serial | — | — | X | F058848 | 0.8000H | 0FD80H,500H | — | V3.000000 | V2.01 | X | — |
| 78K0 | 78K0TY2 | μPD78F0740 | 16MA | X | ✓ | ✓ | ✓ | — | ✓ | ✓ | — | Serial | — | — | X | F074016 | 0.1000H | 0FD80H,280H | — | V3.000000 | V1.10 | X | — |
| 78K0 | 78K0TY2 | μPD78F0741 | 16MA | X | ✓ | ✓ | ✓ | — | ✓ | ✓ | — | Serial | — | — | X | F074116 | 0.2000H | 0FD00H,300H | — | V3.000000 | V1.10 | X | — |

✓: supported; X: not supported; -: Support not planned; Note: Refer to the User's Manual of the target device.

| Microcontroller | Nickname/Group | Product Name | Pins, Package type | Supported functions | | | | | | | | | | | | | | Emulator | Device Specification Name | Default Link Directive Information (FSK) | | Other Memory Area Name, Start address, Size | Device Information File version | | | Additional information |
|-----------------|----------------|--------------|--------------------|---------------------|----------------|------------------|-------------|-------------|-------------|--------------------|-----------|----------|---------|--------|------|-----------------------------------|-------------------------|----------|---------------------------|------------------------------------------|-------------------------------------------------------------|---------------------------------------------|---------------------------------|-------|---|------------------------|
| | | | | Smart Configurator | Code Generator | Pin Configurator | CA Compiler | CX Compiler | CC Compiler | IECUBE, E850, E850 | MINICUBE2 | MINICUBE | E1, E20 | E2 | E2.1 | Processor directive (Device name) | ROM Start address, Size | | | RAM Start address, Size | Productlist.xml | | *.78k or *.800 or *.DVF | *.dcl | | |
| 78K0 | 78K01Y2 | μPD78F0742 | 16MA | X | ✓ | ✓ | ✓ | ✓ | ✓ | ✓ | ✓ | ✓ | ✓ | Serial | — | — | X | F074216 | 0.4000H | 0F00H, 400H | — | V3.00000 | V1.10 | X | — | |
| 78K0 | 78K01Y2 | μPD78F0750 | 16MA | X | ✓ | ✓ | ✓ | ✓ | ✓ | ✓ | ✓ | ✓ | ✓ | Serial | — | — | X | F075016 | 0.1000H | 0F80H, 280H | — | V3.00000 | V1.10 | X | — | |
| 78K0 | 78K01Y2 | μPD78F0751 | 16MA | X | ✓ | ✓ | ✓ | ✓ | ✓ | ✓ | ✓ | ✓ | ✓ | Serial | — | — | X | F075116 | 0.2000H | 0F00H, 300H | — | V3.00000 | V1.10 | X | — | |
| 78K0 | 78K01Y2 | μPD78F0752 | 16MA | X | ✓ | ✓ | ✓ | ✓ | ✓ | ✓ | ✓ | ✓ | ✓ | Serial | — | — | X | F075216 | 0.4000H | 0FC00H, 400H | — | V3.00000 | V1.10 | X | — | |
| 78K0 | 78K01A2 | μPD78F0743 | 20MC, 20MC02 | X | ✓ | ✓ | ✓ | ✓ | ✓ | ✓ | ✓ | ✓ | ✓ | Serial | — | — | X | F074320 | 0.2000H | 0F000H, 300H | — | V3.00000 | V1.10 | X | — | |
| 78K0 | 78K01A2 | μPD78F0744 | 20MC, 20MC02 | X | ✓ | ✓ | ✓ | ✓ | ✓ | ✓ | ✓ | ✓ | ✓ | Serial | — | — | X | F074420 | 0.4000H | 0FC00H, 400H | — | V3.00000 | V1.10 | X | — | |
| 78K0 | 78K01A2 | μPD78F0753 | 20MC, 20MC02 | X | ✓ | ✓ | ✓ | ✓ | ✓ | ✓ | ✓ | ✓ | ✓ | Serial | — | — | X | F075320 | 0.2000H | 0F000H, 300H | — | V3.00000 | V1.10 | X | — | |
| 78K0 | 78K01A2 | μPD78F0754 | 20MC, 20MC02 | X | ✓ | ✓ | ✓ | ✓ | ✓ | ✓ | ✓ | ✓ | ✓ | Serial | — | — | X | F075420 | 0.4000H | 0FC00H, 400H | — | V3.00000 | V1.10 | X | — | |
| 78K0 | 78K01B2 | μPD78F0745 | 30MC | X | ✓ | ✓ | ✓ | ✓ | ✓ | ✓ | ✓ | ✓ | ✓ | Serial | — | — | X | F074530 | 0.2000H | 0F000H, 300H | — | V3.00000 | V1.10 | X | — | |
| 78K0 | 78K01B2 | μPD78F0745 | 32K8 | X | X | X | ✓ | ✓ | ✓ | ✓ | ✓ | ✓ | ✓ | Serial | — | — | X | F074532 | 0.2000H | 0F000H, 300H | — | V3.00000 | V1.10 | X | — | |
| 78K0 | 78K01B2 | μPD78F0746 | 30MC | X | ✓ | ✓ | ✓ | ✓ | ✓ | ✓ | ✓ | ✓ | ✓ | Serial | — | — | X | F074630 | 0.4000H | 0FC00H, 400H | — | V3.00000 | V1.10 | X | — | |
| 78K0 | 78K01B2 | μPD78F0746 | 32K8 | X | X | X | ✓ | ✓ | ✓ | ✓ | ✓ | ✓ | ✓ | Serial | — | — | X | F074632 | 0.4000H | 0FC00H, 400H | — | V3.00000 | V1.10 | X | — | |
| 78K0 | 78K01B2 | μPD78F0755 | 30MC | X | ✓ | ✓ | ✓ | ✓ | ✓ | ✓ | ✓ | ✓ | ✓ | Serial | — | — | X | F075530 | 0.2000H | 0F000H, 300H | — | V3.00000 | V1.10 | X | — | |
| 78K0 | 78K01B2 | μPD78F0755 | 32K8 | X | X | X | ✓ | ✓ | ✓ | ✓ | ✓ | ✓ | ✓ | Serial | — | — | X | F075532 | 0.2000H | 0F000H, 300H | — | V3.00000 | V1.10 | X | — | |
| 78K0 | 78K01B2 | μPD78F0756 | 30MC | X | ✓ | ✓ | ✓ | ✓ | ✓ | ✓ | ✓ | ✓ | ✓ | Serial | — | — | X | F075630 | 0.4000H | 0FC00H, 400H | — | V3.00000 | V1.10 | X | — | |
| 78K0 | 78K01B2 | μPD78F0756 | 32K8 | X | X | X | ✓ | ✓ | ✓ | ✓ | ✓ | ✓ | ✓ | Serial | — | — | X | F075632 | 0.4000H | 0FC00H, 400H | — | V3.00000 | V1.10 | X | — | |
| 78K0 | 78K01E3-M | μPD78F8052 | 64GB | X | X | X | ✓ | ✓ | ✓ | ✓ | ✓ | ✓ | ✓ | Serial | — | — | X | F8052 | 0.4000H | 0FC00H, 400H | — | V3.00000 | V1.10 | X | — | |
| 78K0 | 78K01E3-M | μPD78F8053 | 64GB | X | X | X | ✓ | ✓ | ✓ | ✓ | ✓ | ✓ | ✓ | Serial | — | — | X | F8053 | 0.8000H | 0F800H, 500H | — | V3.00000 | V1.10 | X | — | |
| 78K0 | 78K01G3-M | μPD78F8054 | 100GC | X | X | X | ✓ | ✓ | ✓ | ✓ | ✓ | ✓ | ✓ | Serial | — | — | X | F8054 | 0.2000H | 0F800H, 500H | — | V3.00000 | V1.10 | X | — | |
| 78K0 | 78K01G3-M | μPD78F8055 | 100GC | X | X | X | ✓ | ✓ | ✓ | ✓ | ✓ | ✓ | ✓ | Serial | — | — | X | F8055 | 0.F000H | 0F800H, 500H | — | V3.00000 | V1.10 | X | — | |
| 78K0 | 78K0FY2-L | μPD78F0854 | 16MA | X | X | X | ✓ | ✓ | ✓ | ✓ | ✓ | ✓ | ✓ | Serial | — | — | X | F0854 | 0.1000H | 0F80H, 280H | — | V3.00000 | V1.02 | X | — | |
| 78K0 | 78K0FY2-L | μPD78F0855 | 16MA | X | X | X | ✓ | ✓ | ✓ | ✓ | ✓ | ✓ | ✓ | Serial | — | — | X | F0855 | 0.2000H | 0F00H, 300H | — | V3.00000 | V1.02 | X | — | |
| 78K0 | 78K0FY2-L | μPD78F0856 | 16MA | X | X | X | ✓ | ✓ | ✓ | ✓ | ✓ | ✓ | ✓ | Serial | — | — | X | F0856 | 0.4000H | 0F00H, 300H | — | V3.00000 | V1.02 | X | — | |
| 78K0 | 78K0FA2-L | μPD78F0857 | 20MC | X | X | X | ✓ | ✓ | ✓ | ✓ | ✓ | ✓ | ✓ | Serial | — | — | X | F0857 | 0.1000H | 0F80H, 280H | — | V3.00000 | V1.02 | X | — | |
| 78K0 | 78K0FA2-L | μPD78F0858 | 20MC | X | X | X | ✓ | ✓ | ✓ | ✓ | ✓ | ✓ | ✓ | Serial | — | — | X | F0858 | 0.2000H | 0F00H, 300H | — | V3.00000 | V1.02 | X | — | |
| 78K0 | 78K0FA2-L | μPD78F0859 | 20MC | X | X | X | ✓ | ✓ | ✓ | ✓ | ✓ | ✓ | ✓ | Serial | — | — | X | F0859 | 0.4000H | 0FC00H, 400H | — | V3.00000 | V1.02 | X | — | |
| 78K0 | 78K0FB2-L | μPD78F0864 | 30MC | X | X | X | ✓ | ✓ | ✓ | ✓ | ✓ | ✓ | ✓ | Serial | — | — | X | F0864 | 0.2000H | 0F000H, 300H | — | V3.00000 | V1.02 | X | — | |
| 78K0 | 78K0FB2-L | μPD78F0865 | 30MC | X | X | X | ✓ | ✓ | ✓ | ✓ | ✓ | ✓ | ✓ | Serial | — | — | X | F0865 | 0.4000H | 0FC00H, 400H | — | V3.00000 | V1.02 | X | — | |
| 78K0 | 78K0KB2-A | μPD78F0590 | 30MC | X | X | X | ✓ | ✓ | ✓ | ✓ | ✓ | ✓ | ✓ | Serial | — | — | X | F0590 | 0.4000H | 0F800H, 500H | — | V3.00000 | V1.00 | X | — | |
| 78K0 | 78K0KB2-A | μPD78F0591 | 30MC | X | X | X | ✓ | ✓ | ✓ | ✓ | ✓ | ✓ | ✓ | Serial | — | — | X | F0591 | 0.8000H | 0F800H, 500H | — | V3.00000 | V1.00 | X | — | |
| 78K0 | 78K0KC2-A | μPD78F0592 | 36FC, 48GA | X | X | X | ✓ | ✓ | ✓ | ✓ | ✓ | ✓ | ✓ | Serial | — | — | X | F0592 | 0.4000H | 0F800H, 500H | — | V3.00000 | V1.10 | X | — | |
| 78K0 | 78K0KC2-A | μPD78F0593 | 36FC, 48GA | X | X | X | ✓ | ✓ | ✓ | ✓ | ✓ | ✓ | ✓ | Serial | — | — | X | F0593 | 0.8000H | 0F800H, 500H | — | V3.00000 | V1.10 | X | — | |
| 78K0 | μPD78F0730 | μPD78F0730 | 30MC | X | X | X | ✓ | ✓ | ✓ | ✓ | ✓ | ✓ | ✓ | Serial | — | — | X | F0730 | 0.4000H | 0F800H, 500H | DRAM, 0F00H, 800H LRAM, 0F01H, 12FH | V3.00000 | V1.10 | X | — | |
| 78K0 | 78K0KC2-C | μPD78F0760 | 48GA | X | X | X | ✓ | ✓ | ✓ | ✓ | ✓ | ✓ | ✓ | Serial | — | — | X | F076048 | 0.8000H | 0F800H, 500H | — | V3.00000 | V1.00 | X | — | |
| 78K0 | 78K0KC2-C | μPD78F0761 | 48GA | X | X | X | ✓ | ✓ | ✓ | ✓ | ✓ | ✓ | ✓ | Serial | — | — | X | F076148 | 0.C000H | 0F800H, 500H | — | V3.00000 | V1.00 | X | — | |
| 78K0 | 78K0KC2-C | μPD78F0762 | 48GA | X | X | X | ✓ | ✓ | ✓ | ✓ | ✓ | ✓ | ✓ | Serial | — | — | X | F076248 | 0.0F00H | 0F800H, 500H | — | V3.00000 | V1.00 | X | — | |
| 78K0 | 78K0KE2-C | μPD78F0763 | 64GB | X | X | X | ✓ | ✓ | ✓ | ✓ | ✓ | ✓ | ✓ | Serial | — | — | X | F076364 | 0.8000H | 0F800H, 500H | — | V3.00000 | V1.00 | X | — | |
| 78K0 | 78K0KE2-C | μPD78F0764 | 64GB | X | X | X | ✓ | ✓ | ✓ | ✓ | ✓ | ✓ | ✓ | Serial | — | — | X | F076464 | 0.C000H | 0F800H, 500H | — | V3.00000 | V1.00 | X | — | |
| 78K0 | 78K0KE2-C | μPD78F0765 | 64GB | X | X | X | ✓ | ✓ | ✓ | ✓ | ✓ | ✓ | ✓ | Serial | — | — | X | F076564 | 0.F000H | 0F800H, 500H | — | V3.00000 | V1.00 | X | — | |
| 78K0 | 78K0DE2 | μPD78F0836 | 64GB | X | X | X | ✓ | ✓ | ✓ | ✓ | ✓ | ✓ | ✓ | Serial | — | — | X | F0836 | 0.6000H | 0F800H, 500H | DRAM, 0F40H, 400H DSRAM, 0F80H, 18H | V3.00000 | V1.00 | X | — | |
| 78K0 | 78K0DE2 | μPD78F0837 | 64GB | X | X | X | ✓ | ✓ | ✓ | ✓ | ✓ | ✓ | ✓ | Serial | — | — | X | F0837 | 0.C000H | 0F800H, 500H | DRAM, 0F00H, 800H DSRAM, 0F30H, 18H | V3.00000 | V1.00 | X | — | |
| 78K0 | 78K0DF2 | μPD78F0838 | 80GK | X | X | X | ✓ | ✓ | ✓ | ✓ | ✓ | ✓ | ✓ | Serial | — | — | X | F0838 | 0.6000H | 0F800H, 500H | DRAM, 0F40H, 400H DSRAM, 0F80H, 28H | V3.00000 | V1.00 | X | — | |
| 78K0 | 78K0DF2 | μPD78F0839 | 80GK | X | X | X | ✓ | ✓ | ✓ | ✓ | ✓ | ✓ | ✓ | Serial | — | — | X | F0839 | 0.C000H | 0F800H, 500H | DRAM, 0F00H, 800H DSRAM, 0F30H, 28H | V3.00000 | V1.00 | X | — | |
| 78K0 | 78K0DF2 | μPD78F0840 | 80GK | X | X | X | ✓ | ✓ | ✓ | ✓ | ✓ | ✓ | ✓ | Serial | — | — | X | F0840 | 0.6000H | 0F800H, 500H | DRAM, 0F00H, 800H DSRAM, 0F30H, 20H | V3.00000 | V1.00 | X | — | |
| 78K0 | 78K0DF2 | μPD78F0841 | 80GK | X | X | X | ✓ | ✓ | ✓ | ✓ | ✓ | ✓ | ✓ | Serial | — | — | X | F0841 | 0.C000H | 0F800H, 500H | DRAM, 0F00H, 400H DSRAM, 0F30H, 20H | V3.00000 | V1.00 | X | — | |
| 78K0 | 78K0DF2 | μPD78F0842 | 80GK | X | X | X | ✓ | ✓ | ✓ | ✓ | ✓ | ✓ | ✓ | Serial | — | — | X | F0842 | 0.6000H | 0F800H, 500H | DRAM, 0F00H, 400H DSRAM, 0F30H, 1CH | V3.00000 | V1.00 | X | — | |
| 78K0 | 78K0DF2 | μPD78F0843 | 80GK | X | X | X | ✓ | ✓ | ✓ | ✓ | ✓ | ✓ | ✓ | Serial | — | — | X | F0843 | 0.C000H | 0F800H, 500H | DRAM, 0F00H, 800H DSRAM, 0F30H, 1CH | V3.00000 | V1.00 | X | — | |
| 78K0 | 78K0DE2 | μPD78F0844 | 64GB | X | X | X | ✓ | ✓ | ✓ | ✓ | ✓ | ✓ | ✓ | Serial | — | — | X | F0844 | 0.8000H | 0F800H, 500H | DRAM, 0F40H, 400H LRAM, 0F00H, 100H DSRAM, 0F30H, 18H | V3.00000 | V1.00 | X | — | |
| 78K0 | 78K0DE2 | μPD78F0845 | 64GB | X | X | X | ✓ | ✓ | ✓ | ✓ | ✓ | ✓ | ✓ | Serial | — | — | X | F0845 | 0.F000H | 0F800H, 500H | DRAM, 0F00H, 800H LRAM, 0F40H, 100H DSRAM, 0F30H, 18H | V3.00000 | V1.00 | X | — | |
| 78K0 | 78K0DF2 | μPD78F0846 | | | | | | | | | | | | | | | | | | | | | | | | |

| Microcontroller | Nickname/Group | Product Name | Pins, Package type | Supported functions | | | | | | | | | | | | Device | | Default Link Directive Information (78K) | | Device Information File version | | | Additional information | |
|-----------------|----------------|--------------|--------------------|---------------------|----------------|------------------|-------------|-------------|-------------|--------------------|-----------|----------|---------|----|---------------------------------------------------|--------------------|-------------------------|------------------------------------------|---------------------------------------------|----------------------------------------------------------------------------------------------------------------------------------------------------------------------|-------------------------|-------|------------------------|---------|
| | | | | Smart Configurator | Code Generator | Pin Configurator | Compiler | | | Emulator | | | | | Processor Debugger (Simulator supporting OS Time) | Specification Name | ROM Start address, Size | RAM Start address, Size | Other Memory Area Name, Start address, Size | *_Productlist.xml | *_78k or *_800 or *_DVF | *_ddi | | |
| | | | | | | | CA Compiler | CX Compiler | CC Compiler | IECUBE, E850, E850 | MINICUBE2 | MINICUBE | E1, E20 | E2 | | | | | | | | | | E2 Lite |
| 78K0 | μPD78F8039 | μPD78F8020D | 64GB | X | X | X | ✓ | — | — | ✓ | ✓ | — | Serial | — | — | X | F8020 | 0,C000H | 0FB00H,500H | IXRAM, 0E000H, 1800H BANK0, 08000H, 4000H BANK1, 18000H, 4000H BANK2, 28000H, 4000H BANK3, 38000H, 4000H BANK4, 48000H, 4000H BANK5, 58000H, 4000H | V3.000000 | V1.00 | X | — |
| 78K0 | μPD78F8039 | μPD78F8020DA | 64GB | X | X | X | ✓ | — | — | ✓ | ✓ | — | Serial | — | — | X | F8020 | 0,C000H | 0FB00H,500H | IXRAM, 0E000H, 1800H BANK0, 08000H, 4000H BANK1, 18000H, 4000H BANK2, 28000H, 4000H BANK3, 38000H, 4000H BANK4, 48000H, 4000H BANK5, 58000H, 4000H | V3.000000 | V1.00 | X | — |
| 78K0 | μPD78F8039 | μPD78F8026 | 48GA,48K8 | X | X | X | ✓ | — | — | ✓ | ✓ | — | Serial | — | — | X | F8026 | 0,4000H | 0FC00H,400H | IXRAM, 0E000H, 1800H BANK0, 08000H, 4000H BANK1, 18000H, 4000H BANK2, 28000H, 4000H BANK3, 38000H, 4000H BANK4, 48000H, 4000H BANK5, 58000H, 4000H | V3.000000 | V1.00 | X | — |
| 78K0 | μPD78F8039 | μPD78F8027 | 48GA,48K8 | X | X | X | ✓ | — | — | ✓ | ✓ | — | Serial | — | — | X | F8027 | 0,6000H | 0FB00H,500H | IXRAM, 0E000H, 1800H BANK0, 08000H, 4000H BANK1, 18000H, 4000H BANK2, 28000H, 4000H BANK3, 38000H, 4000H BANK4, 48000H, 4000H BANK5, 58000H, 4000H | V3.000000 | V1.00 | X | — |
| 78K0 | μPD78F8039 | μPD78F8028 | 48GA,48K8 | X | X | X | ✓ | — | — | ✓ | ✓ | — | Serial | — | — | X | F8028 | 0,8000H | 0FB00H,500H | IXRAM, 0E000H, 1800H BANK0, 08000H, 4000H BANK1, 18000H, 4000H BANK2, 28000H, 4000H BANK3, 38000H, 4000H BANK4, 48000H, 4000H BANK5, 58000H, 4000H | V3.000000 | V1.00 | X | — |
| 78K0 | μPD78F8039 | μPD78F8029 | 48GA,48K8 | X | X | X | ✓ | — | — | ✓ | ✓ | — | Serial | — | — | X | F8029 | 0,C000H | 0FB00H,500H | IXRAM, 0E000H, 1800H BANK0, 08000H, 4000H BANK1, 18000H, 4000H BANK2, 28000H, 4000H BANK3, 38000H, 4000H BANK4, 48000H, 4000H BANK5, 58000H, 4000H | V3.000000 | V1.00 | X | — |
| 78K0 | μPD78F8039 | μPD78F8030 | 48GA,48K8 | X | X | X | ✓ | — | — | ✓ | ✓ | — | Serial | — | — | X | F8030 | 0,F000H | 0FB00H,500H | IXRAM, 0E000H, 1800H BANK0, 08000H, 4000H BANK1, 18000H, 4000H BANK2, 28000H, 4000H BANK3, 38000H, 4000H BANK4, 48000H, 4000H BANK5, 58000H, 4000H | V3.000000 | V1.00 | X | — |
| 78K0 | μPD78F8039 | μPD78F8032D | 48GA,48K8 | X | X | X | ✓ | — | — | ✓ | ✓ | — | Serial | — | — | X | F8032D | 0,C000H | 0FB00H,500H | IXRAM, 0E000H, 1800H BANK0, 08000H, 4000H BANK1, 18000H, 4000H BANK2, 28000H, 4000H BANK3, 38000H, 4000H BANK4, 48000H, 4000H BANK5, 58000H, 4000H | V3.000000 | V1.00 | X | — |
| 78K0 | μPD78F8071 | μPD78F8071 | 64NA | X | X | X | ✓ | — | — | ✓ | ✓ | — | Serial | — | — | X | F8071 | 0,4000H | 0FC00H,400H | IXRAM, 0E000H, 1800H BANK0, 08000H, 4000H BANK1, 18000H, 4000H BANK2, 28000H, 4000H BANK3, 38000H, 4000H BANK4, 48000H, 4000H BANK5, 58000H, 4000H | V3.000000 | V1.00 | X | — |
| 78K0 | μPD78F8072 | μPD78F8072 | 64NA | X | X | X | ✓ | — | — | ✓ | ✓ | — | Serial | — | — | X | F8072 | 0,6000H | 0FB00H,500H | IXRAM, 0E000H, 1800H BANK0, 08000H, 4000H BANK1, 18000H, 4000H BANK2, 28000H, 4000H BANK3, 38000H, 4000H BANK4, 48000H, 4000H BANK5, 58000H, 4000H | V3.000000 | V1.00 | X | — |
| 78K0 | μPD78F8073 | μPD78F8073 | 64NA | X | X | X | ✓ | — | — | ✓ | ✓ | — | Serial | — | — | X | F8073 | 0,8000H | 0FB00H,500H | IXRAM, 0E000H, 1800H BANK0, 08000H, 4000H BANK1, 18000H, 4000H BANK2, 28000H, 4000H BANK3, 38000H, 4000H BANK4, 48000H, 4000H BANK5, 58000H, 4000H | V3.000000 | V1.00 | X | — |
| 78K0 | μPD78F8074 | μPD78F8074 | 64NA | X | X | X | ✓ | — | — | ✓ | ✓ | — | Serial | — | — | X | F8074 | 0,C000H | 0FB00H,500H | IXRAM, 0E000H, 1800H BANK0, 08000H, 4000H BANK1, 18000H, 4000H BANK2, 28000H, 4000H BANK3, 38000H, 4000H BANK4, 48000H, 4000H BANK5, 58000H, 4000H | V3.000000 | V1.00 | X | — |
| 78K0 | μPD78F8075 | μPD78F8075 | 64NA | X | X | X | ✓ | — | — | ✓ | ✓ | — | Serial | — | — | X | F8075 | 0,F000H | 0FB00H,500H | IXRAM, 0E000H, 1800H BANK0, 08000H, 4000H BANK1, 18000H, 4000H BANK2, 28000H, 4000H BANK3, 38000H, 4000H BANK4, 48000H, 4000H BANK5, 58000H, 4000H | V3.000000 | V1.00 | X | — |
| 78K0 | μPD78F8077 | μPD78F8077D | 64NA | X | X | X | ✓ | — | — | ✓ | ✓ | — | Serial | — | — | X | F8077D | 0,C000H | 0FB00H,500H | IXRAM, 0E000H, 1800H BANK0, 08000H, 4000H BANK1, 18000H, 4000H BANK2, 28000H, 4000H BANK3, 38000H, 4000H BANK4, 48000H, 4000H BANK5, 58000H, 4000H | V3.000000 | V1.00 | X | — |

| Microcontroller | Nickname/Group | Product Name | Pins, Package type | Supported functions | | | | | | | | | | | | | Device Specification Name | Default Link Directive Information (7.8K) | | | Device Information File version | | | Additional information |
|-----------------|----------------|--------------|--------------------|---------------------|----------------|------------------|-------------|-------------|-------------|-------------------|-----------|----------|---------|--------|---------|----------------------------------------------------|---------------------------|-------------------------------------------|-------------------------|---------------------------------------------|---------------------------------|-------------------------|------------------------------------------------------------------------------------------------|------------------------|
| | | | | Smart Configurator | Code Generator | Pin Configurator | Compiler | | | Emulator | | | | | | Peripheral Simulator, Simulator supporting CC Tool | | ROM Start address, Size | RAM Start address, Size | Other Memory Area Name, Start address, Size | Device Information File version | | | |
| | | | | | | | CA Compiler | CX Compiler | CC Compiler | ICUBE, E850, E850 | MINICUBE2 | MINICUBE | E1, E20 | E2 | E2 Lite | | | | | | *.Productlist.xml | *.78k or *.800 or *.DVF | *.ddi | |
| RL78 | RL78/G13 | R5F100GG | 48FB,48NA | X | ✓ | ✓ | ✓ | — | ✓ | — | — | Serial | Serial | Serial | ✓ | F100GG | Note | Note | — | V8.030000 | V1.14 | — | Only CS+ for CC supports Peripheral Simulator. E2 emulator is not supported with CS+ for CACX. | |

| Microcontroller | Nickname/Group | Product Name | Pins, Package type | Supported functions | | | | | | | | | | | | | Device Specification Name | Default Link Directive Information (7.8K) | | | Device Information File version | | | Additional information |
|-----------------|----------------|--------------|--------------------|---------------------|----------------|------------------|-------------|-------------|-------------|----------------------|-----------|----------|--------|--------|---------|----------------------------------------------------|---------------------------|-------------------------------------------|-------------------------|---------------------------------------------|---------------------------------|-------------------------|------------------------------------------------------------------------------------------------|------------------------|
| | | | | Smart Configurator | Code Generator | Pin Configurator | Compiler | | | Emulator | | | | | | Peripheral Simulator, Simulator supporting CC Tool | | ROM Start address, Size | RAM Start address, Size | Other Memory Area Name, Start address, Size | *_Productlist.xml | *_78k or *_800 or *_DVF | *_ddi | |
| | | | | | | | CA Compiler | CX Compiler | CC Compiler | IECUBE, IE850, IE850 | MINICUBE2 | MINICUBE | E1,E20 | E2 | E2 Lite | | | | | | | | | |
| RL78 | RL78/G13 | R5F101AE | 30SP | X | ✓ | ✓ | ✓ | — | ✓ | — | — | Serial | Serial | Serial | ✓ | F101AE | Note | Note | — | V8.030000 | V1.14 | — | Only CS+ for CC supports Peripheral Simulator. E2 emulator is not supported with CS+ for CACX. | |

| Microcontroller | Nickname/Group | Product Name | Pins, Package type | Supported functions | | | | | | | | | | | | | Device Information File version | | | Additional information | | | |
|-----------------|----------------|--------------|--------------------|---------------------|----------------|------------------|-------------|-------------|-------------|--------------------|-----------|----------|---------|--------|---------|----------------------------------------------------|-------------------------------------------|-------------------------|---------------------------------------------|------------------------|-------------------|-------------------------|------------------------------------------------------------------------------------------------|
| | | | | Smart Configurator | Code Generator | Pin Configurator | Compiler | | | Emulator | | | | | | Peripheral Simulator, Simulator supporting CC Tool | Default Link Directive Information (7.8K) | | | | | | |
| | | | | | | | CA Compiler | CX Compiler | CC Compiler | IECUBE, E850, E850 | MINICUBE2 | MINICUBE | E1, E20 | E2 | E2 Lite | | ROM Start address, Size | RAM Start address, Size | Other Memory Area Name, Start address, Size | | *.Productlist.xml | *.78k or *.800 or *.DVF | *.ddi |
| RL78 | RL78/G13 | R5F101LF | 64FB,64FA,64BG | X | ✓ | ✓ | ✓ | — | ✓ | — | — | Serial | Serial | Serial | ✓ | F101LF | Note | Note | — | V8.030000 | V1.14 | — | Only CS+ for CC supports Peripheral Simulator. E2 emulator is not supported with CS+ for CACX. |

| Microcontroller | Nickname/Group | Product Name | Pins, Package type | Supported functions | | | | | | | | | | | | | Device Specification Name | Default Link Directive Information (7.8K) | | | Device Information File version | | | Additional information |
|-----------------|----------------|--------------|--------------------|---------------------|----------------|------------------|-------------|-------------|-------------|-------------------|-----------|----------|---------|--------|---------|----------------------------------------------------|---------------------------|-------------------------------------------|-------------------------|---------------------------------------------|---------------------------------|-------------------------|------------------------------------------------------------------------------------------------|------------------------|
| | | | | Smart Configurator | Code Generator | Pin Configurator | Compiler | | | Emulator | | | | | | Peripheral Simulator, Simulator supporting CC Tool | | ROM Start address, Size | RAM Start address, Size | Other Memory Area Name, Start address, Size | Device Information File version | | | |
| | | | | | | | CA Compiler | CX Compiler | CC Compiler | ICUBE, E850, E850 | MINICUBE2 | MINICUBE | E1, E20 | E2 | E2 Lite | | | | | | *.Productlist.xml | *.78k or *.800 or *.DVF | *.ddi | |
| RL78 | RL78/G14 | R5F104FJ | 44FP | X | ✓ | ✓ | ✓ | — | ✓ | — | — | Serial | Serial | Serial | ✓ | F104FJ | Note | Note | — | V8.030000 | V2.30 | — | Only CS+ for CC supports Peripheral Simulator. E2 emulator is not supported with CS+ for CACX. | |

✓ - supported; X - not supported; - Support not planned; Note Refer to the User's Manual of the target device.

| Microcontroller | Nickname/Group | Product Name | Pins, Package type | Supported functions | | | | | | | | | | | Device Specification Name | Default Link Directive Information (7.8K) | | | | Additional information | | | | |
|-----------------|----------------|--------------|--------------------|---------------------|----------------|------------------|-------------|-------------|-------------|-------------------|-----------|----------|---------|--------|---------------------------|--------------------------------------------|-------------------------|-------------------------|---------------------------------------------|------------------------|---------------------------------|-------------------|-------------------------|----------------------------------------------------|
| | | | | Smart Configurator | Code Generator | Pin Configurator | Compiler | | | Emulator | | | | | | Peripheral Devices (Device supporting CS+) | ROM Start address, Size | RAM Start address, Size | Other Memory Area Name, Start address, Size | | Device Information File version | | | |
| | | | | | | | CA Compiler | CX Compiler | CC Compiler | ICUBE, E850, E850 | MINICUBE2 | MINICUBE | E1, E20 | E2 | | | | | | | E2 Lite | *.Productlist.xml | *.78k or *.800 or *.DVF | *.ddi |
| RL78 | RL78/G1F | RSF11BBE | 32FP | X | ✓ | ✓ | ✓ | - | ✓ | ✓ | - | - | Serial | Serial | Serial | ✓ | F11BBE | Note | Note | - | V8.030000 | V1.01 | - | E2 emulator is not supported with CS+ for C.A.C.X. |
| RL78 | RL78/G1F | RSF11BCE | 36LA | X | ✓ | ✓ | ✓ | - | ✓ | ✓ | - | - | Serial | Serial | Serial | ✓ | F11BCE | Note | Note | - | V8.030000 | V1.01 | - | E2 emulator is not supported with CS+ for C.A.C.X. |

| Microcontroller | Nickname/Group | Product Name | Pins, Package type | Supported functions | | | | | | | | | | | | | Device Specification Name | Default Link Directive Information (7.8K) | | | Additional information | | | |
|-----------------|----------------|--------------|--------------------|---------------------|----------------|------------------|-------------|-------------|-------------|----------------------|-----------|----------|---------|--------|---------|-------------------------------------------------------|---------------------------|-------------------------------------------|-------------------------|---------------------------------------------|------------------------|---------------------------------|-------------------------|-------------------------------------------------|
| | | | | Smart Configurator | Code Generator | Pin Configurator | Compiler | | | Emulator | | | | | | Peripheral Simulator, Simulator supporting C/C++/Java | | ROM Start address, Size | RAM Start address, Size | Other Memory Area Name, Start address, Size | | Device Information File version | | |
| | | | | | | | CA Compiler | CX Compiler | CC Compiler | IECUBE, IE850, IE850 | MINICUBE2 | MINICUBE | E1, E20 | E2 | E2 Lite | | | | | | | Productlist.xml | *.78k or *.800 or *.DVF | *.ddi |
| RL78 | RL78/F13 | RSF10AGD | 48FB,48NA | X | ✓ | ✓ | ✓ | - | ✓ | ✓ | - | - | Serial | Serial | Serial | X | F10AGD | Note | Note | - | V8.030000 | V1.11 | - | E2 emulator is not supported with CS+ for CACX. |

| Microcontroller | Nickname/Group | Product Name | Pins, Package type | Supported functions | | | | | | | | | | | Device Specific Information (Device) | | | | | Default Link Directive Information (Link) | | | | Additional information | |
|-----------------|----------------|--------------|---------------------|---------------------|----------------|------------------|-------------|-------------|-------------|----------------------|-----------|----------|---------|----|--------------------------------------|---------------------------|-------------------------|-------------------------|---------------------------------------------|-------------------------------------------|-------------------------|-------|---|------------------------|--|
| | | | | Smart Configurator | Code Generator | Pin Configurator | CA Compiler | CX Compiler | CC Compiler | IECUBE, IE850, IE850 | MINICUBE2 | MINICUBE | E1, E20 | E2 | E2 Link | Device Specification Name | ROM Start address, Size | RAM Start address, Size | Other Memory Area Name, Start address, Size | *.Productlist.xml | *.78k or *.800 or *.DVF | *.dcl | | | |
| 78KOR | 78KOR/KC3-L | µPD78F1000 | 40K8 | X | | | | | | | | | | | | | F10004 | 0.4000H | 0FFB00H,500H | | V3.00000 | V2.20 | X | | |
| 78KOR | 78KOR/KC3-L | µPD78F1000 | 44GB | X | | | | | | | | | | | | | F10004 | 0.4000H | 0FFB00H,500H | | V3.00000 | V2.20 | X | | |
| 78KOR | 78KOR/KC3-L | µPD78F1001 | 40K8 | X | | | | | | | | | | | | | F10014 | 0.8000H | 0FF900H,700H | | V3.00000 | V2.20 | X | | |
| 78KOR | 78KOR/KC3-L | µPD78F1001 | 44GB | X | | | | | | | | | | | | | F10014 | 0.8000H | 0FF900H,700H | | V3.00000 | V2.20 | X | | |
| 78KOR | 78KOR/KC3-L | µPD78F1001 | 48G8A | X | | | | | | | | | | | | | F10014 | 0.8000H | 0FF900H,700H | | V3.00000 | V2.20 | X | | |
| 78KOR | 78KOR/KC3-L | µPD78F1002 | 40K8 | X | | | | | | | | | | | | | F10024 | 0.C000H | 0FF700H,900H | | V3.00000 | V2.20 | X | | |
| 78KOR | 78KOR/KC3-L | µPD78F1002 | 44GB | X | | | | | | | | | | | | | F10024 | 0.C000H | 0FF700H,900H | | V3.00000 | V2.20 | X | | |
| 78KOR | 78KOR/KC3-L | µPD78F1002 | 48G8A | X | | | | | | | | | | | | | F10024 | 0.C000H | 0FF700H,900H | | V3.00000 | V2.20 | X | | |
| 78KOR | 78KOR/KC3-L | µPD78F1003 | 40K8 | X | | | | | | | | | | | | | F10034 | 0.10000H | 0FF300H,D00H | | V3.00000 | V2.20 | X | | |
| 78KOR | 78KOR/KC3-L | µPD78F1003 | 44GB | X | | | | | | | | | | | | | F10034 | 0.10000H | 0FF300H,D00H | | V3.00000 | V2.20 | X | | |
| 78KOR | 78KOR/KC3-L | µPD78F1003 | 48G8A | X | | | | | | | | | | | | | F10034 | 0.10000H | 0FF300H,D00H | | V3.00000 | V2.20 | X | | |
| 78KOR | 78KOR/KC3-L | µPD78F1004 | 52GB | X | | | | | | | | | | | | | F10052 | 0.C000H | 0FF700H,900H | | V3.00000 | V2.20 | X | | |
| 78KOR | 78KOR/KD3-L | µPD78F1006 | 52GB | X | | | | | | | | | | | | | F10062 | 0.10000H | 0FF300H,0D00H | | V3.00000 | V2.20 | X | | |
| 78KOR | 78KOR/KE3-L | µPD78F1007 | 64GA,64GB,64GK,64F1 | X | | | | | | | | | | | | | F10074 | 0.8000H | 0FF900H,700H | | V3.00000 | V2.20 | X | | |
| 78KOR | 78KOR/KE3-L | µPD78F1008 | 64GA,64GB,64GK,64F1 | X | | | | | | | | | | | | | F10084 | 0.8000H | 0FF900H,700H | | V3.00000 | V2.20 | X | | |
| 78KOR | 78KOR/KE3-L | µPD78F1009 | 64GA,64GB,64GK,64F1 | X | | | | | | | | | | | | | F10094 | 0.10000H | 0FF300H,0D00H | | V3.00000 | V2.20 | X | | |
| 78KOR | 78KOR/KF3-L | µPD78F1010 | 80GK,80GC | X | | | | | | | | | | | X | | F10100 | 0.10000H | 0FF300H,1100H | | V3.00000 | V2.20 | X | | |
| 78KOR | 78KOR/KF3-L | µPD78F1011 | 80GK,80GC | X | | | | | | | | | | | X | | F10100 | 0.10000H | 0FF300H,1100H | | V3.00000 | V2.20 | X | | |
| 78KOR | 78KOR/KF3-L | µPD78F1012 | 80GK,80GC | X | | | | | | | | | | | X | | F10120 | 0.20000H | 0FDFO0H,2100H | | V3.00000 | V2.20 | X | | |
| 78KOR | 78KOR/KF3-L | µPD78F1027 | 80GK,80GC | X | | | | | | | | | | | X | | F10270 | 0.30000H | 0FD700H,2900H | | V3.00000 | V2.20 | X | | |
| 78KOR | 78KOR/KF3-L | µPD78F1028 | 80GK,80GC | X | | | | | | | | | | | X | | F10280 | 0.40000H | 0FCFO0H,3100H | | V3.00000 | V2.20 | X | | |
| 78KOR | 78KOR/KG3-L | µPD78F1013 | 100GC,100GF,100F1 | X | | | | | | | | | | | X | | F10134 | 0.18000H | 0FDFO0H,2100H | | V3.00000 | V2.20 | X | | |
| 78KOR | 78KOR/KG3-L | µPD78F1014 | 100GC,100GF,100F1 | X | | | | | | | | | | | X | | F10144 | 0.20000H | 0FDFO0H,2100H | | V3.00000 | V2.20 | X | | |
| 78KOR | 78KOR/KG3-L | µPD78F1029 | 100GC,100GF | X | | | | | | | | | | | X | | F10294 | 0.30000H | 0FD700H,2900H | | V3.00000 | V2.20 | X | | |
| 78KOR | 78KOR/KF3-L | µPD78F1030 | 100GC,100GF | X | | | | | | | | | | | X | | F10304 | 0.40000H | 0FCFO0H,3100H | | V3.00000 | V2.20 | X | | |
| 78KOR | 78KOR/KE3 | µPD78F1142 | 64GA,64GB,64GK,64F1 | X | | | | | | | | | | | | | F11424 | 0.10000H | 0FEFO0H,1100H | | V3.00000 | V3.00 | X | | |
| 78KOR | 78KOR/KE3 | µPD78F1142A | 64GA,64GB,64GK,64F1 | X | | | | | | | | | | | | | F11424 | 0.10000H | 0FEFO0H,1100H | | V3.00000 | V3.00 | X | | |
| 78KOR | 78KOR/KE3 | µPD78F1143 | 64GA,64GB,64GK,64F1 | X | | | | | | | | | | | | | F11434 | 0.18000H | 0FE700H,1900H | | V3.00000 | V3.00 | X | | |
| 78KOR | 78KOR/KE3 | µPD78F1143A | 64GA,64GB,64GK,64F1 | X | | | | | | | | | | | | | F11434 | 0.18000H | 0FE700H,1900H | | V3.00000 | V3.00 | X | | |
| 78KOR | 78KOR/KE3 | µPD78F1144 | 64GA,64GB,64GK,64F1 | X | | | | | | | | | | | | | F11444 | 0.20000H | 0FDFO0H,2100H | | V3.00000 | V3.00 | X | | |
| 78KOR | 78KOR/KE3 | µPD78F1144A | 64GA,64GB,64GK,64F1 | X | | | | | | | | | | | | | F11444 | 0.20000H | 0FDFO0H,2100H | | V3.00000 | V3.00 | X | | |
| 78KOR | 78KOR/KE3 | µPD78F1145 | 64GA,64GB,64GK,64F1 | X | | | | | | | | | | | | | F11454 | 0.30000H | 0FD700H,2900H | | V3.00000 | V3.00 | X | | |
| 78KOR | 78KOR/KE3 | µPD78F1145A | 64GA,64GB,64GK,64F1 | X | | | | | | | | | | | | | F11454 | 0.30000H | 0FD700H,2900H | | V3.00000 | V3.00 | X | | |
| 78KOR | 78KOR/KE3 | µPD78F1146 | 64GA,64GB,64GK,64F1 | X | | | | | | | | | | | | | F11464 | 0.40000H | 0FCFO0H,3100H | | V3.00000 | V3.00 | X | | |
| 78KOR | 78KOR/KE3 | µPD78F1146A | 64GA,64GB,64GK,64F1 | X | | | | | | | | | | | | | F11464 | 0.40000H | 0FCFO0H,3100H | | V3.00000 | V3.00 | X | | |
| 78KOR | 78KOR/KF3 | µPD78F1152 | 80GC,80GK | X | | | | | | | | | | | | | F11520 | 0.10000H | 0FEFO0H,1100H | | V3.00000 | V3.00 | X | | |
| 78KOR | 78KOR/KF3 | µPD78F1152A | 80GC,80GK | X | | | | | | | | | | | | | F11520 | 0.10000H | 0FEFO0H,1100H | | V3.00000 | V3.00 | X | | |
| 78KOR | 78KOR/KF3 | µPD78F1153 | 80GC,80GK | X | | | | | | | | | | | | | F11530 | 0.18000H | 0FE700H,1900H | | V3.00000 | V3.00 | X | | |
| 78KOR | 78KOR/KF3 | µPD78F1153A | 80GC,80GK | X | | | | | | | | | | | | | F11530 | 0.18000H | 0FE700H,1900H | | V3.00000 | V3.00 | X | | |
| 78KOR | 78KOR/KF3 | µPD78F1154 | 80GC,80GK | X | | | | | | | | | | | | | F11540 | 0.20000H | 0FDFO0H,2100H | | V3.00000 | V3.00 | X | | |
| 78KOR | 78KOR/KF3 | µPD78F1154A | 80GC,80GK | X | | | | | | | | | | | | | F11540 | 0.20000H | 0FDFO0H,2100H | | V3.00000 | V3.00 | X | | |
| 78KOR | 78KOR/KF3 | µPD78F1155 | 80GC,80GK | X | | | | | | | | | | | | | F11550 | 0.30000H | 0FD700H,2900H | | V3.00000 | V3.00 | X | | |
| 78KOR | 78KOR/KF3 | µPD78F1155A | 80GC,80GK | X | | | | | | | | | | | | | F11550 | 0.30000H | 0FD700H,2900H | | V3.00000 | V3.00 | X | | |
| 78KOR | 78KOR/KF3 | µPD78F1156 | 80GC,80GK | X | | | | | | | | | | | | | F11560 | 0.40000H | 0FCFO0H,3100H | | V3.00000 | V3.00 | X | | |
| 78KOR | 78KOR/KF3 | µPD78F1156A | 80GC,80GK | X | | | | | | | | | | | | | F11560 | 0.40000H | 0FCFO0H,3100H | | V3.00000 | V3.00 | X | | |
| 78KOR | 78KOR/KG3 | µPD78F1162 | 100GC,100GF | X | | | | | | | | | | | | | F11624 | 0.10000H | 0FEFO0H,1100H | | V3.00000 | V3.00 | X | | |
| 78KOR | 78KOR/KG3 | µPD78F1162A | 100GC,100GF | X | | | | | | | | | | | | | F11624 | 0.10000H | 0FEFO0H,1100H | | V3.00000 | V3.00 | X | | |
| 78KOR | 78KOR/KG3 | µPD78F1163 | 100GC,100GF | X | | | | | | | | | | | | | F11634 | 0.18000H | 0FE700H,1900H | | V3.00000 | V3.00 | X | | |
| 78KOR | 78KOR/KG3 | µPD78F1163A | 100GC,100GF | X | | | | | | | | | | | | | F11634 | 0.18000H | 0FE700H,1900H | | V3.00000 | V3.00 | X | | |
| 78KOR | 78KOR/KG3 | µPD78F1164 | 100GC,100GF | X | | | | | | | | | | | | | F11644 | 0.20000H | 0FDFO0H,2100H | | V3.00000 | V3.00 | X | | |
| 78KOR | 78KOR/KG3 | µPD78F1164A | 100GC,100GF | X | | | | | | | | | | | | | F11644 | 0.20000H | 0FDFO0H,2100H | | V3.00000 | V3.00 | X | | |
| 78KOR | 78KOR/KG3 | µPD78F1165 | 100GC,100GF | X | | | | | | | | | | | | | F11654 | 0.30000H | 0FD700H,2900H | | V3.00000 | V3.00 | X | | |
| 78KOR | 78KOR/KG3 | µPD78F1165A | 100GC,100GF | X | | | | | | | | | | | | | F11654 | 0.30000H | 0FD700H,2900H | | V3.00000 | V3.00 | X | | |
| 78KOR | 78KOR/KG3 | µPD78F1166 | 100GC,100GF | X | | | | | | | | | | | | | F11664 | 0.40000H | 0FCFO0H,3100H | | V3.00000 | V3.00 | X | | |
| 78KOR | 78KOR/KG3 | µPD78F1166A | 100GC,100GF | X | | | | | | | | | | | | | F11664 | 0.40000H | 0FCFO0H,3100H | | V3.00000 | V3.00 | X | | |
| 78KOR | 78KOR/KG3 | µPD78F1167 | 100GC,100GF | X | | | | | | | | | | | | | F11674 | 0.60000H | 0F9F00H,6100H | | V3.00000 | V3.00 | X | | |
| 78KOR | 78KOR/KG3 | µPD78F1167A | 100GC,100GF | X | | | | | | | | | | | | | F11674 | 0.60000H | 0F9F00H,6100H | | V3.00000 | V3.00 | X | | |
| 78KOR | 78KOR/KG3 | µPD78F1168 | 100GC,100GF | X | | | | | | | | | | | | | F11684 | 0.80000H | 0F8700H,7900H | | V3.00000 | V3.00 | X | | |
| 78KOR | 78KOR/KG3 | µPD78F1168A | 100GC,100GF | X | | | | | | | | | | | | | F11684 | 0.80000H | 0F8700H,7900H | | V3.00000 | V3.00 | X | | |
| 78KOR | 78KOR/KH3 | µPD78F1174 | 128GF | X | | | | | | | | | | | | | F1174C | 0.20000H | 0FDFO0H,2100H | | V3.00000 | V3.00 | X | | |
| 78KOR | 78KOR/KH3 | µPD78F1174A | 128GF | X | | | | | | | | | | | | | F1174C | 0.20000H | 0FDFO0H,2100H | | V3.00000 | V3.00 | X | | |
| 78KOR | 78KOR/KH3 | µPD78F1175 | 128GF | X | | | | | | | | | | | | | F1175C | 0.30000H | 0FD700H,2900H | | V3.00000 | V3.00 | X | | |
| 78KOR | 78KOR/KH3 | µPD78F1175A | 128GF | X | | | | | | | | | | | | | F1175C | 0.30000H | 0FD700H,2900H | | V3.00000 | V3.00 | X | | |
| 78KOR | 78KOR/KH3 | µPD78F1176 | 128GF | X | | | | | | | | | | | | | F1176C | 0.40000H | 0FCFO0H,3100H | | V3.00000 | V3.00 | X | | |
| 78KOR | 78KOR/KH3 | µPD78F1176A | 128GF | X | | | | | | | | | | | | | F1176C | 0.40000H | 0FCFO0H,3100H | | V3.00000 | V3.00 | X | | |
| 78KOR | 78KOR/KH3 | µPD78F1177 | 128GF | X | | | | | | | | | | | | | F1177C | 0.60000H | 0F9F00H,6100H | | V3.00000 | V3.00 | X | | |
| 78KOR | | | | | | | | | | | | | | | | | | | | | | | | | |

✓: supported; X: not supported; -: Support not planned; Note Refer to the User's Manual of the target device.

Table with columns: Microcontroller, Nickname/Group, Product Name, Pins, Package type, Smart Configurator, Code Generator, Pin Configurator, CA Compiler, CX Compiler, CC Compiler, IEUCUBE, MINICUBE2, MINICUBE, E1, E20, E2, E2E, E2E, E2E, E2E, Device Specification Name, ROM Start address, RAM Start address, Other Memory Area Name, Start address, Size, Device Information File version, Additional information.

| Microcontroller | Nickname/Group | Product Name | Pins, Package type | Smart Configurator | Code Generator | Pin Configurator | Supported functions | | | | | | | | | | Emulator | Device Specification Name | Default Link Directive Information (78K) | | | | Additional information | | |
|-----------------|------------------|--------------|--------------------|--------------------|----------------|------------------|---------------------|-------------|-------------|-------------------|-----------|----------|---------|----|---------|-------------------------------|----------|---------------------------|------------------------------------------|-------------------------|---------------------------|---------------------------|------------------------|---------------------------------|-------------------------|
| | | | | | | | CA Compiler | CX Compiler | CC Compiler | iCUBE, E850, E850 | MINICUBE2 | MINICUBE | E1, E20 | E2 | E2 Lite | Program Downloader (or other) | | | ROM Start address, Size | RAM Start address, Size | Other Memory Area | | | Device Information File version | |
| | | | | | | | | | | | | | | | | | | | | | Name, Start address, Size | Name, Start address, Size | | *.Productlist.xml | *.78k or *.800 or *.DVF |
| 78KOR | 78KOR/HE3 | µPD78F1035 | 48GA | X | X | ✓ | ✓ | — | ✓ | ✓ | ✓ | — | Serial | — | — | X | F103648 | 0.40000H | 0FBF00H,4000H | — | V3.000000 | V1.00 | X | — | |
| 78KOR | 78KOR/HE3 | µPD78F1036 | 64GB | X | X | ✓ | ✓ | — | ✓ | ✓ | ✓ | — | Serial | — | — | X | F103664 | 0.10000H | 0FEF00H,1000H | — | V3.000000 | V1.00 | X | — | |
| 78KOR | 78KOR/HE3 | µPD78F1037 | 64GB | X | X | ✓ | ✓ | — | ✓ | ✓ | ✓ | — | Serial | — | — | X | F103764 | 0.18000H | 0FE700H,1800H | — | V3.000000 | V1.00 | X | — | |
| 78KOR | 78KOR/HE3 | µPD78F1038 | 64GB | X | X | ✓ | ✓ | — | ✓ | ✓ | ✓ | — | Serial | — | — | X | F103864 | 0.20000H | 0FDF00H,2000H | — | V3.000000 | V1.00 | X | — | |
| 78KOR | 78KOR/HE3 | µPD78F1039 | 64GB | X | X | ✓ | ✓ | — | ✓ | ✓ | ✓ | — | Serial | — | — | X | F103964 | 0.30000H | 0FCF00H,3000H | — | V3.000000 | V1.00 | X | — | |
| 78KOR | 78KOR/HE3 | µPD78F1040 | 64GB | X | X | ✓ | ✓ | — | ✓ | ✓ | ✓ | — | Serial | — | — | X | F104064 | 0.40000H | 0FDF00H,4000H | — | V3.000000 | V1.00 | X | — | |
| 78KOR | 78KOR/HP3 | µPD78F1041 | 80GK | X | X | ✓ | ✓ | — | ✓ | ✓ | ✓ | — | Serial | — | — | X | F104180 | 0.10000H | 0FEF00H,1000H | — | V3.000000 | V1.00 | X | — | |
| 78KOR | 78KOR/HP3 | µPD78F1042 | 80GK | X | X | ✓ | ✓ | — | ✓ | ✓ | ✓ | — | Serial | — | — | X | F104280 | 0.18000H | 0FE700H,1800H | — | V3.000000 | V1.00 | X | — | |
| 78KOR | 78KOR/HP3 | µPD78F1043 | 80GK | X | X | ✓ | ✓ | — | ✓ | ✓ | ✓ | — | Serial | — | — | X | F104380 | 0.20000H | 0FDF00H,2000H | — | V3.000000 | V1.00 | X | — | |
| 78KOR | 78KOR/HP3 | µPD78F1044 | 80GK | X | X | ✓ | ✓ | — | ✓ | ✓ | ✓ | — | Serial | — | — | X | F104480 | 0.30000H | 0FCF00H,3000H | — | V3.000000 | V1.00 | X | — | |
| 78KOR | 78KOR/HP3 | µPD78F1045 | 80GK | X | X | ✓ | ✓ | — | ✓ | ✓ | ✓ | — | Serial | — | — | X | F104580 | 0.40000H | 0FDF00H,4000H | — | V3.000000 | V1.00 | X | — | |
| 78KOR | 78KOR/HG3 | µPD78F1046 | 100GC | X | X | ✓ | ✓ | — | ✓ | ✓ | ✓ | — | Serial | — | — | X | F104640 | 0.10000H | 0FEF00H,1000H | — | V3.000000 | V1.00 | X | — | |
| 78KOR | 78KOR/HG3 | µPD78F1047 | 100GC | X | X | ✓ | ✓ | — | ✓ | ✓ | ✓ | — | Serial | — | — | X | F104740 | 0.18000H | 0FE700H,1800H | — | V3.000000 | V1.00 | X | — | |
| 78KOR | 78KOR/HG3 | µPD78F1048 | 100GC | X | X | ✓ | ✓ | — | ✓ | ✓ | ✓ | — | Serial | — | — | X | F104840 | 0.20000H | 0FDF00H,2000H | — | V3.000000 | V1.00 | X | — | |
| 78KOR | 78KOR/HG3 | µPD78F1049 | 100GC | X | X | ✓ | ✓ | — | ✓ | ✓ | ✓ | — | Serial | — | — | X | F104940 | 0.30000H | 0FCF00H,3000H | — | V3.000000 | V1.00 | X | — | |
| 78KOR | 78KOR/HG3 | µPD78F1050 | 100GC | X | X | ✓ | ✓ | — | ✓ | ✓ | ✓ | — | Serial | — | — | X | F105040 | 0.40000H | 0FDF00H,4000H | — | V3.000000 | V1.00 | X | — | |
| 78KOR | 78KOR/KE3-A | µPD78F1016 | 64F1 | X | X | ✓ | ✓ | — | ✓ | ✓ | ✓ | — | Serial | — | — | X | F101664 | 0.10000H | 0FEF00H,1000H | — | V3.000000 | V1.10 | X | — | |
| 78KOR | 78KOR/KE3-A | µPD78F1017 | 64F1 | X | X | ✓ | ✓ | — | ✓ | ✓ | ✓ | — | Serial | — | — | X | F101764 | 0.18000H | 0FE700H,1800H | — | V3.000000 | V1.10 | X | — | |
| 78KOR | 78KOR/KE3-A | µPD78F1018 | 64F1 | X | X | ✓ | ✓ | — | ✓ | ✓ | ✓ | — | Serial | — | — | X | F101864 | 0.20000H | 0FDF00H,2000H | — | V3.000000 | V1.10 | X | — | |
| 78KOR | 78KOR/µPD78F8043 | µPD78F8040 | 56K8 | X | X | X | ✓ | — | ✓ | ✓ | ✓ | — | Serial | — | — | X | F804056 | 0.8000H | 0FEF00H,1000H | — | V3.000000 | V1.00 | X | — | |
| 78KOR | 78KOR/µPD78F8043 | µPD78F8041 | 56K8 | X | X | X | ✓ | — | ✓ | ✓ | ✓ | — | Serial | — | — | X | F804156 | 0.10000H | 0FEF00H,1000H | — | V3.000000 | V1.00 | X | — | |
| 78KOR | 78KOR/µPD78F8043 | µPD78F8042 | 56K8 | X | X | X | ✓ | — | ✓ | ✓ | ✓ | — | Serial | — | — | X | F804256 | 0.18000H | 0FE700H,1800H | — | V3.000000 | V1.00 | X | — | |
| 78KOR | 78KOR/µPD78F8043 | µPD78F8043 | 56K8 | X | X | X | ✓ | — | ✓ | ✓ | ✓ | — | Serial | — | — | X | F804356 | 0.20000H | 0FDF00H,2000H | — | V3.000000 | V1.00 | X | — | |
| 78KOR | 78KOR/µPD78F8058 | µPD78F8056 | 56K8 | X | X | X | ✓ | — | ✓ | ✓ | ✓ | — | Serial | — | — | X | F8056 | 0.10000H | 0FDF00H,2100H | — | V3.000000 | V1.00 | X | — | |
| 78KOR | 78KOR/µPD78F8058 | µPD78F8057 | 56K8 | X | X | X | ✓ | — | ✓ | ✓ | ✓ | — | Serial | — | — | X | F8057 | 0.18000H | 0FDF00H,2100H | — | V3.000000 | V1.00 | X | — | |
| 78KOR | 78KOR/µPD78F8058 | µPD78F8058 | 56K8 | X | X | X | ✓ | — | ✓ | ✓ | ✓ | — | Serial | — | — | X | F8058 | 0.20000H | 0FDF00H,2100H | — | V3.000000 | V1.00 | X | — | |
| 78KOR | µPD78F8069 | µPD78F8064 | 64K8 | X | X | X | ✓ | — | ✓ | ✓ | ✓ | — | Serial | — | — | X | F806464 | 0.20000H | 0FDF00H,2000H | — | V3.000000 | V1.00 | X | — | |
| 78KOR | µPD78F8069 | µPD78F8065 | 64K8 | X | X | X | ✓ | — | ✓ | ✓ | ✓ | — | Serial | — | — | X | F806564 | 0.30000H | 0FCF00H,3000H | — | V3.000000 | V1.00 | X | — | |
| 78KOR | µPD78F8069 | µPD78F8066 | 64K8 | X | X | X | ✓ | — | ✓ | ✓ | ✓ | — | Serial | — | — | X | F806664 | 0.40000H | 0FDF00H,4000H | — | V3.000000 | V1.00 | X | — | |
| 78KOR | µPD78F8069 | µPD78F8067 | 64K8 | X | X | X | ✓ | — | ✓ | ✓ | ✓ | — | Serial | — | — | X | F806764 | 0.20000H | 0FDF00H,2000H | — | V3.000000 | V1.00 | X | — | |
| 78KOR | µPD78F8069 | µPD78F8068 | 64K8 | X | X | X | ✓ | — | ✓ | ✓ | ✓ | — | Serial | — | — | X | F806864 | 0.30000H | 0FCF00H,3000H | — | V3.000000 | V1.00 | X | — | |
| 78KOR | µPD78F8069 | µPD78F8069 | 64K8 | X | X | X | ✓ | — | ✓ | ✓ | ✓ | — | Serial | — | — | X | F806964 | 0.40000H | 0FDF00H,4000H | — | V3.000000 | V1.00 | X | — | |
| 78KOR | 78KOR/LC3-M | µPD78F8070 | 100GC | X | X | X | ✓ | — | ✓ | ✓ | ✓ | — | Serial | — | — | X | F807040 | 0.20000H | 0FE300H,1000H | — | V3.000000 | V1.00 | X | — | |
| 78KOR | 78KOR/KC3-L(USB) | µPD78F1022 | 48GA,48K8 | X | X | X | ✓ | — | ✓ | ✓ | ✓ | — | Serial | — | — | X | F102248 | 0.10000H | 0FE700H,1800H | — | V3.000000 | V1.00 | X | — | |
| 78KOR | 78KOR/KC3-L(USB) | µPD78F1023 | 48GA,48K8 | X | X | X | ✓ | — | ✓ | ✓ | ✓ | — | Serial | — | — | X | F102348 | 0.18000H | 0FDF00H,2100H | — | V3.000000 | V1.00 | X | — | |
| 78KOR | 78KOR/KC3-L(USB) | µPD78F1024 | 48GA,48K8 | X | X | X | ✓ | — | ✓ | ✓ | ✓ | — | Serial | — | — | X | F102448 | 0.20000H | 0FDF00H,2100H | — | V3.000000 | V1.00 | X | — | |
| 78KOR | 78KOR/KC3-L(USB) | µPD78F1025 | 64GA,64GB,64F1 | X | X | X | ✓ | — | ✓ | ✓ | ✓ | — | Serial | — | — | X | F102564 | 0.18000H | 0FDF00H,2100H | — | V3.000000 | V1.00 | X | — | |
| 78KOR | 78KOR/KC3-L(USB) | µPD78F1026 | 64GA,64GB,64F1 | X | X | X | ✓ | — | ✓ | ✓ | ✓ | — | Serial | — | — | X | F102664 | 0.20000H | 0FDF00H,2100H | — | V3.000000 | V1.00 | X | — | |

| Microcontroller | Nickname/Group | Product Name | Pins, Package type | Smart Configurator | Code Generator | Pin Configurator | Supported functions | | | | Emulator | | | Specification Name | Device Specification Name | ROM Start address, Size | RAM Start address, Size | Other Memory Area Name, Start address, Size | Device Information File version | | | Additional information |
|-----------------|----------------|---------------|--------------------------------------|--------------------|----------------|------------------|---------------------|-------------|-------------|----------------------|-----------|----------|---------|--------------------|---------------------------|-------------------------|-------------------------|---------------------------------------------|---------------------------------|---------|-------------------|------------------------|
| | | | | | | | CA Compiler | CX Compiler | CC Compiler | IECUBE, IE850, IE850 | MINICUBE2 | MINICUBE | E1, E20 | | | | | | E2 | E2 Lite | *.productlist.xml | |
| RH850 | RH850C1H | R7F701260ABG | 252pin BGA | X | X | X | - | - | - | - | - | - | - | X | R701260 | - | - | - | V8.03000 | V1.21 | X | - |
| RH850 | RH850C1H | R7F701270 | 252pin BGA | X | X | X | - | - | - | - | - | - | - | X | R701270 | - | - | - | V8.03000 | V1.21 | X | - |
| RH850 | RH850C1M | R7F701263AFP | 144pin LQFP | X | X | X | - | - | - | - | - | - | - | X | R701263 | - | - | - | V8.03000 | V1.21 | X | - |
| RH850 | RH850C1M | R7F701271 | 144pin LQFP | X | X | X | - | - | - | - | - | - | - | X | R701271 | - | - | - | V8.03000 | V1.21 | X | - |
| RH850 | RH850C1M-A1 | R7F701278 | 176pin LQFP | X | X | X | - | - | - | - | - | - | - | X | R701278 | - | - | - | V8.03000 | V1.10 | X | - |
| RH850 | RH850C1M-A2 | R7F701275 | 252pin BGA | X | X | X | - | - | - | - | - | - | - | X | R701275 | - | - | - | V8.03000 | V1.10 | X | - |
| RH850 | RH850E1L | R7F701201 | 252pin BGA, 176pin LQFP, 144pin LQFP | X | ✓ | ✓ | - | - | - | ✓ | - | - | - | X | R701201 | - | - | - | V8.03000 | V1.31 | X | - |
| RH850 | RH850E1L | R7F701205 | 252pin BGA, 176pin LQFP, 144pin LQFP | X | ✓ | ✓ | - | - | - | ✓ | - | - | - | X | R701205 | - | - | - | V8.03000 | V1.31 | X | - |
| RH850 | RH850E1M-S | R7F701202 | 304pin BGA, 252pin BGA | X | ✓ | ✓ | - | - | - | ✓ | - | - | - | X | R701202 | - | - | - | V8.03000 | V1.31 | X | - |
| RH850 | RH850E1M-S | R7F701204 | 304pin BGA, 252pin BGA | X | ✓ | ✓ | - | - | - | ✓ | - | - | - | X | R701204 | - | - | - | V8.03000 | V1.31 | X | - |
| RH850 | RH850E1M-S2 | R7F701215 | 304pin BGA, 252pin BGA | X | ✓ | ✓ | - | - | - | ✓ | - | - | - | X | R701215 | - | - | - | V8.03000 | V1.20 | X | - |
| RH850 | RH850E1M-S2 | R7F701216 | 304pin BGA, 252pin BGA | X | ✓ | ✓ | - | - | - | ✓ | - | - | - | X | R701216 | - | - | - | V8.03000 | V1.20 | X | - |
| RH850 | RH850F1L | R7F701002xAFF | 100pin LQFP | X | X | X | - | - | - | ✓ | - | - | - | X | R701002 | - | - | - | V8.03000 | V1.40 | X | - |
| RH850 | RH850F1L | R7F701003xAFF | 100pin LQFP | X | X | X | - | - | - | ✓ | - | - | - | X | R701003 | - | - | - | V8.03000 | V1.50 | X | - |
| RH850 | RH850F1L | R7F701006xAFF | 144pin LQFP | X | X | X | - | - | - | ✓ | - | - | - | X | R701006 | - | - | - | V8.03000 | V1.50 | X | - |
| RH850 | RH850F1L | R7F701007xAFF | 176pin LQFP | X | X | X | - | - | - | ✓ | - | - | - | X | R701007 | - | - | - | V8.03000 | V1.50 | X | - |
| RH850 | RH850F1L | R7F701008xAFF | 48pin LQFP | X | X | X | - | - | - | ✓ | - | - | - | X | R701008 | - | - | - | V8.03000 | V1.50 | X | - |
| RH850 | RH850F1L | R7F701009xAFF | 48pin LQFP | X | X | X | - | - | - | ✓ | - | - | - | X | R701009 | - | - | - | V8.03000 | V1.50 | X | - |
| RH850 | RH850F1L | R7F701010xAFF | 48pin LQFP | X | X | X | - | - | - | ✓ | - | - | - | X | R701010 | - | - | - | V8.03000 | V1.50 | X | - |
| RH850 | RH850F1L | R7F701011xAFF | 64pin LQFP | X | X | X | - | - | - | ✓ | - | - | - | X | R701011 | - | - | - | V8.03000 | V1.50 | X | - |
| RH850 | RH850F1L | R7F701012xAFF | 64pin LQFP | X | X | X | - | - | - | ✓ | - | - | - | X | R701012 | - | - | - | V8.03000 | V1.50 | X | - |
| RH850 | RH850F1L | R7F701013xAFF | 64pin LQFP | X | X | X | - | - | - | ✓ | - | - | - | X | R701013 | - | - | - | V8.03000 | V1.50 | X | - |
| RH850 | RH850F1L | R7F701014xAFF | 64pin LQFP | X | X | X | - | - | - | ✓ | - | - | - | X | R701014 | - | - | - | V8.03000 | V1.50 | X | - |
| RH850 | RH850F1L | R7F701015xAFF | 64pin LQFP | X | X | X | - | - | - | ✓ | - | - | - | X | R701015 | - | - | - | V8.03000 | V1.50 | X | - |
| RH850 | RH850F1L | R7F701016xAFF | 80pin LQFP | X | X | X | - | - | - | ✓ | - | - | - | X | R701016 | - | - | - | V8.03000 | V1.50 | X | - |
| RH850 | RH850F1L | R7F701017xAFF | 80pin LQFP | X | X | X | - | - | - | ✓ | - | - | - | X | R701017 | - | - | - | V8.03000 | V1.50 | X | - |
| RH850 | RH850F1L | R7F701018xAFF | 80pin LQFP | X | X | X | - | - | - | ✓ | - | - | - | X | R701018 | - | - | - | V8.03000 | V1.50 | X | - |
| RH850 | RH850F1L | R7F701019xAFF | 80pin LQFP | X | X | X | - | - | - | ✓ | - | - | - | X | R701019 | - | - | - | V8.03000 | V1.50 | X | - |
| RH850 | RH850F1L | R7F701020xAFF | 80pin LQFP | X | X | X | - | - | - | ✓ | - | - | - | X | R701020 | - | - | - | V8.03000 | V1.50 | X | - |
| RH850 | RH850F1L | R7F701021xAFF | 100pin LQFP | X | X | X | - | - | - | ✓ | - | - | - | X | R701021 | - | - | - | V8.03000 | V1.50 | X | - |
| RH850 | RH850F1L | R7F701022xAFF | 100pin LQFP | X | X | X | - | - | - | ✓ | - | - | - | X | R701022 | - | - | - | V8.03000 | V1.50 | X | - |
| RH850 | RH850F1L | R7F701023xAFF | 100pin LQFP | X | X | X | - | - | - | ✓ | - | - | - | X | R701023 | - | - | - | V8.03000 | V1.50 | X | - |
| RH850 | RH850F1L | R7F701024xAFF | 100pin LQFP | X | X | X | - | - | - | ✓ | - | - | - | X | R701024 | - | - | - | V8.03000 | V1.50 | X | - |
| RH850 | RH850F1L | R7F701025xAFF | 100pin LQFP | X | X | X | - | - | - | ✓ | - | - | - | X | R701025 | - | - | - | V8.03000 | V1.50 | X | - |
| RH850 | RH850F1L | R7F701026xAFF | 144pin LQFP | X | X | X | - | - | - | ✓ | - | - | - | X | R701026 | - | - | - | V8.03000 | V1.50 | X | - |
| RH850 | RH850F1L | R7F701027xAFF | 144pin LQFP | X | X | X | - | - | - | ✓ | - | - | - | X | R701027 | - | - | - | V8.03000 | V1.50 | X | - |
| RH850 | RH850F1L | R7F701028xAFF | 144pin LQFP | X | X | X | - | - | - | ✓ | - | - | - | X | R701028 | - | - | - | V8.03000 | V1.50 | X | - |
| RH850 | RH850F1L | R7F701029xAFF | 144pin LQFP | X | X | X | - | - | - | ✓ | - | - | - | X | R701029 | - | - | - | V8.03000 | V1.50 | X | - |
| RH850 | RH850F1L | R7F701030xAFF | 144pin LQFP | X | X | X | - | - | - | ✓ | - | - | - | X | R701030 | - | - | - | V8.03000 | V1.50 | X | - |
| RH850 | RH850F1L | R7F701032xAFF | 176pin LQFP | X | X | X | - | - | - | ✓ | - | - | - | X | R701032 | - | - | - | V8.03000 | V1.50 | X | - |
| RH850 | RH850F1L | R7F701033xAFF | 176pin LQFP | X | X | X | - | - | - | ✓ | - | - | - | X | R701033 | - | - | - | V8.03000 | V1.50 | X | - |
| RH850 | RH850F1L | R7F701034xAFF | 176pin LQFP | X | X | X | - | - | - | ✓ | - | - | - | X | R701034 | - | - | - | V8.03000 | V1.50 | X | - |
| RH850 | RH850F1L | R7F701040xAFF | 64pin LQFP | X | X | X | - | - | - | ✓ | - | - | - | X | R701040 | - | - | - | V8.03000 | V1.20 | X | - |
| RH850 | RH850F1L | R7F701041xAFF | 64pin LQFP | X | X | X | - | - | - | ✓ | - | - | - | X | R701041 | - | - | - | V8.03000 | V1.20 | X | - |
| RH850 | RH850F1L | R7F701042xAFF | 80pin LQFP | X | X | X | - | - | - | ✓ | - | - | - | X | R701042 | - | - | - | V8.03000 | V1.20 | X | - |
| RH850 | RH850F1L | R7F701043xAFF | 80pin LQFP | X | X | X | - | - | - | ✓ | - | - | - | X | R701043 | - | - | - | V8.03000 | V1.20 | X | - |
| RH850 | RH850F1L | R7F701044xAFF | 100pin LQFP | X | X | X | - | - | - | ✓ | - | - | - | X | R701044 | - | - | - | V8.03000 | V1.20 | X | - |
| RH850 | RH850F1L | R7F701045xAFF | 100pin LQFP | X | X | X | - | - | - | ✓ | - | - | - | X | R701045 | - | - | - | V8.03000 | V1.20 | X | - |
| RH850 | RH850F1L | R7F701046xAFF | 144pin LQFP | X | X | X | - | - | - | ✓ | - | - | - | X | R701046 | - | - | - | V8.03000 | V1.20 | X | - |
| RH850 | RH850F1L | R7F701047xAFF | 144pin LQFP | X | X | X | - | - | - | ✓ | - | - | - | X | R701047 | - | - | - | V8.03000 | V1.20 | X | - |
| RH850 | RH850F1L | R7F701048xAFF | 144pin LQFP | X | X | X | - | - | - | ✓ | - | - | - | X | R701048 | - | - | - | V8.03000 | V1.20 | X | - |
| RH850 | RH850F1L | R7F701049xAFF | 144pin LQFP | X | X | X | - | - | - | ✓ | - | - | - | X | R701049 | - | - | - | V8.03000 | V1.20 | X | - |
| RH850 | RH850F1L | R7F701050xAFF | 176pin LQFP | X | X | X | - | - | - | ✓ | - | - | - | X | R701050 | - | - | - | V8.03000 | V1.20 | X | - |
| RH850 | RH850F1L | R7F701051xAFF | 176pin LQFP | X | X | X | - | - | - | ✓ | - | - | - | X | R701051 | - | - | - | V8.03000 | V1.20 | X | - |
| RH850 | RH850F1L | R7F701052xAFF | 176pin LQFP | X | X | X | - | - | - | ✓ | - | - | - | X | R701052 | - | - | - | V8.03000 | V1.20 | X | - |
| RH850 | RH850F1L | R7F701053xAFF | 176pin LQFP | X | X | X | - | - | - | ✓ | - | - | - | X | R701053 | - | - | - | V8.03000 | V1.20 | X | - |
| RH850 | RH850F1L | R7F701054xAFF | 144pin LQFP | X | X | X | - | - | - | ✓ | - | - | - | X | R701054 | - | - | - | V8.03000 | V1.20 | X | - |
| RH850 | RH850F1L | R7F701055xAFF | 144pin LQFP | X | X | X | - | - | - | ✓ | - | - | - | X | R701055 | - | - | - | V8.03000 | V1.20 | X | - |
| RH850 | RH850F1L | R7F701056xAFF | 176pin LQFP | X | X | X | - | - | - | ✓ | - | - | - | X | R701056 | - | - | - | V8.03000 | V1.20 | X | - |
| RH850 | RH850F1L | R7F701057xAFF | 176pin LQFP | X | X | X | - | - | - | ✓ | - | - | - | X | R701057 | - | - | - | V8.03000 | V1.20 | X | - |
| RH850 | RH850F1H | R7F701501 | 176pin LQFP | X | X | X | - | - | - | ✓ | - | - | - | X | R701501 | - | - | - | V8.03000 | V1.30 | X | - |
| RH850 | RH850F1H | R7F701502 | 176pin LQFP | X | X | X | - | - | - | ✓ | - | - | - | X | R701502 | - | - | - | V8.03000 | V1.30 | X | - |
| RH850 | RH850F1H | R7F701503 | 176pin LQFP | X | X | X | - | - | - | ✓ | - | - | - | X | R701503 | - | - | - | V8.03000 | V1.30 | X | - |
| RH850 | RH850F1H | R7F701506 | 233pin BGA | X | X | X | - | - | - | ✓ | - | - | - | X | R701506 | - | - | - | V8.03000 | V1.30 | X | - |
| RH850 | RH850F1H | R7F701507 | 233pin BGA | X | X | X | - | - | - | ✓ | - | - | - | X | R701507 | - | - | - | V8.03000 | V1.30 | X | - |
| RH850 | RH850F1H | R7F701508 | 233pin BGA | X | X | X | - | - | - | ✓ | - | - | - | X | R701508 | - | - | - | V8.03000 | V1.30 | X | - |
| RH850 | RH850F1H | R7F701511 | 272pin BGA | X | X | X | - | - | - | ✓ | - | - | - | X | R701511 | - | - | - | V8.03000 | V1.30 | X | - |
| RH850 | RH850F1H | R7F701512 | 272pin BGA | X | X | X | - | - | - | ✓ | - | - | - | X | R701512 | - | - | - | V8.03000 | V1.30 | X | - |
| RH850 | RH850F1H | R7F701513 | 272pin BGA | X | X | X | - | - | - | ✓ | - | - | - | X | R701513 | - | - | - | V8.03000 | V1.30 | X | - |
| RH850 | RH850F1H | R7F701521 | 176pin LQFP | X | X | X | - | - | - | ✓ | - | - | - | X | R701521 | - | - | - | V8.03000 | V1.30 | X | - |
| RH850 | RH850F1H | R7F701522 | 176pin LQFP | X | X | X | - | - | - | ✓ | - | - | - | X | R701522 | - | - | - | V8.03000 | V1.30 | X | - |
| RH850 | RH850F1H | R7F701524 | 233pin BGA | X | X | X | - | - | - | ✓ | - | - | - | X | R701524 | - | | | | | | |

✓ : supported; X : not supported; - : Support not planned; Note Refer to the User's Manual of the target device.

| Microcontroller | Nickname/Group | Product Name | Pins, Package type | Supported functions | | | | | | | | | | Emulator | | | Device Specification Name | Device ROM Start address, Size | Device RAM Start address, Size | Other Memory Area Name, Start address, Size | Device Information File version | | | Additional information | |
|-----------------|----------------|--------------|--------------------|---------------------|----------------|------------------|-------------|-------------|-------------|----------------------|-----------|----------|---------|----------|---------|------------------|---------------------------|--------------------------------|--------------------------------|---------------------------------------------|---------------------------------|-----------------------------|-------------------|------------------------|-------------------------|
| | | | | Smart Configurator | Code Generator | Pin Configurator | CA Compiler | CX Compiler | CC Compiler | IECUBE, IE850, IE850 | MINICUBE2 | MINICUBE | E1, E20 | E2 | E2 Lite | Processor Device | | | | | Default Link | Directive Information (F&S) | *.Productlist.xml | | *.78k or *.800 or *.DVF |
| RH850 | RH850-F1K | R7F701567 | 176pin LQFP | X | ✓ | ✓ | - | - | - | - | - | - | - | - | - | - | X | R701567 | - | - | - | V8.03000 | V1.20 | X | - |
| RH850 | RH850-F1K | R7F701577 | 176pin LQFP | X | ✓ | ✓ | - | - | - | - | - | - | - | - | - | - | X | R701577 | - | - | - | V8.03000 | V1.20 | X | - |
| RH850 | RH850-F1K | R7F701580 | 100pin LQFP | X | ✓ | ✓ | - | - | - | - | - | - | - | - | - | - | X | R701580 | - | - | - | V8.03000 | V1.20 | X | - |
| RH850 | RH850-F1K | R7F701581 | 100pin LQFP | X | ✓ | ✓ | - | - | - | - | - | - | - | - | - | - | X | R701581 | - | - | - | V8.03000 | V1.20 | X | - |
| RH850 | RH850-F1K | R7F701582 | 144pin LQFP | X | ✓ | ✓ | - | - | - | - | - | - | - | - | - | - | X | R701582 | - | - | - | V8.03000 | V1.20 | X | - |
| RH850 | RH850-F1K | R7F701583 | 144pin LQFP | X | ✓ | ✓ | - | - | - | - | - | - | - | - | - | - | X | R701583 | - | - | - | V8.03000 | V1.20 | X | - |
| RH850 | RH850-F1K | R7F701586 | 176pin LQFP | X | ✓ | ✓ | - | - | - | - | - | - | - | - | - | - | X | R701586 | - | - | - | V8.03000 | V1.20 | X | - |
| RH850 | RH850-F1K | R7F701587 | 176pin LQFP | X | ✓ | ✓ | - | - | - | - | - | - | - | - | - | - | X | R701587 | - | - | - | V8.03000 | V1.20 | X | - |
| RH850 | RH850-F1K | R7F701597 | 176pin LQFP | X | ✓ | ✓ | - | - | - | - | - | - | - | - | - | - | X | R701597 | - | - | - | V8.03000 | V1.20 | X | - |
| RH850 | RH850-F1K | R7F701602 | 144pin LQFP | X | ✓ | ✓ | - | - | - | - | - | - | - | - | - | - | X | R701602 | - | - | - | V8.03000 | V1.20 | X | - |
| RH850 | RH850-F1K | R7F701603 | 144pin LQFP | X | ✓ | ✓ | - | - | - | - | - | - | - | - | - | - | X | R701603 | - | - | - | V8.03000 | V1.20 | X | - |
| RH850 | RH850-F1K | R7F701610 | 100pin LQFP | X | ✓ | ✓ | - | - | - | - | - | - | - | - | - | - | X | R701610 | - | - | - | V8.03000 | V1.20 | X | - |
| RH850 | RH850-F1K | R7F701611 | 100pin LQFP | X | ✓ | ✓ | - | - | - | - | - | - | - | - | - | - | X | R701611 | - | - | - | V8.03000 | V1.20 | X | - |
| RH850 | RH850-F1K | R7F701612 | 144pin LQFP | X | ✓ | ✓ | - | - | - | - | - | - | - | - | - | - | X | R701612 | - | - | - | V8.03000 | V1.20 | X | - |
| RH850 | RH850-F1K | R7F701613 | 144pin LQFP | X | ✓ | ✓ | - | - | - | - | - | - | - | - | - | - | X | R701613 | - | - | - | V8.03000 | V1.20 | X | - |
| RH850 | RH850-F1K | R7F701620 | 100pin LQFP | X | ✓ | ✓ | - | - | - | - | - | - | - | - | - | - | X | R701620 | - | - | - | V8.03000 | V1.20 | X | - |
| RH850 | RH850-F1K | R7F701621 | 100pin LQFP | X | ✓ | ✓ | - | - | - | - | - | - | - | - | - | - | X | R701621 | - | - | - | V8.03000 | V1.20 | X | - |
| RH850 | RH850-F1K | R7F701622 | 144pin LQFP | X | ✓ | ✓ | - | - | - | - | - | - | - | - | - | - | X | R701622 | - | - | - | V8.03000 | V1.20 | X | - |
| RH850 | RH850-F1K | R7F701623 | 144pin LQFP | X | ✓ | ✓ | - | - | - | - | - | - | - | - | - | - | X | R701623 | - | - | - | V8.03000 | V1.20 | X | - |
| RH850 | RH850-F1KM-S1 | R7F701684 | 100pin LQFP | ✓ | X | X | - | - | - | - | - | - | - | - | - | - | X | R701684 | - | - | - | V8.03000 | V1.30 | X | - |
| RH850 | RH850-F1KM-S1 | R7F701685 | 100pin LQFP | ✓ | X | X | - | - | - | - | - | - | - | - | - | - | X | R701685 | - | - | - | V8.03000 | V1.30 | X | - |
| RH850 | RH850-F1KM-S1 | R7F701686 | 100pin LQFP | ✓ | X | X | - | - | - | - | - | - | - | - | - | - | X | R701686 | - | - | - | V8.03000 | V1.30 | X | - |
| RH850 | RH850-F1KM-S1 | R7F701687 | 80pin LQFP | ✓ | X | X | - | - | - | - | - | - | - | - | - | - | X | R701687 | - | - | - | V8.03000 | V1.30 | X | - |
| RH850 | RH850-F1KM-S1 | R7F701688 | 80pin LQFP | ✓ | X | X | - | - | - | - | - | - | - | - | - | - | X | R701688 | - | - | - | V8.03000 | V1.30 | X | - |
| RH850 | RH850-F1KM-S1 | R7F701689 | 80pin LQFP | ✓ | X | X | - | - | - | - | - | - | - | - | - | - | X | R701689 | - | - | - | V8.03000 | V1.30 | X | - |
| RH850 | RH850-F1KM-S1 | R7F701690 | 64pin LQFP | ✓ | X | X | - | - | - | - | - | - | - | - | - | - | X | R701690 | - | - | - | V8.03000 | V1.30 | X | - |
| RH850 | RH850-F1KM-S1 | R7F701691 | 64pin LQFP | ✓ | X | X | - | - | - | - | - | - | - | - | - | - | X | R701691 | - | - | - | V8.03000 | V1.30 | X | - |
| RH850 | RH850-F1KM-S1 | R7F701692 | 64pin LQFP | ✓ | X | X | - | - | - | - | - | - | - | - | - | - | X | R701692 | - | - | - | V8.03000 | V1.30 | X | - |
| RH850 | RH850-F1KM-S1 | R7F701693 | 48pin LQFP | ✓ | X | X | - | - | - | - | - | - | - | - | - | - | X | R701693 | - | - | - | V8.03000 | V1.30 | X | - |
| RH850 | RH850-F1KM-S1 | R7F701694 | 48pin LQFP | ✓ | X | X | - | - | - | - | - | - | - | - | - | - | X | R701694 | - | - | - | V8.03000 | V1.30 | X | - |
| RH850 | RH850-F1KM-S1 | R7F701695 | 48pin LQFP | ✓ | X | X | - | - | - | - | - | - | - | - | - | - | X | R701695 | - | - | - | V8.03000 | V1.30 | X | - |
| RH850 | RH850-F1KM-S4 | R7F701644 | 100pin LQFP | ✓ | X | X | - | - | - | - | - | - | - | - | - | - | X | R701644 | - | - | - | V8.03000 | V1.30 | X | - |
| RH850 | RH850-F1KM-S4 | R7F701645 | 100pin LQFP | ✓ | X | X | - | - | - | - | - | - | - | - | - | - | X | R701645 | - | - | - | V8.03000 | V1.30 | X | - |
| RH850 | RH850-F1KM-S4 | R7F701646 | 144pin LQFP | ✓ | X | X | - | - | - | - | - | - | - | - | - | - | X | R701646 | - | - | - | V8.03000 | V1.30 | X | - |
| RH850 | RH850-F1KM-S4 | R7F701647 | 144pin LQFP | ✓ | X | X | - | - | - | - | - | - | - | - | - | - | X | R701647 | - | - | - | V8.03000 | V1.30 | X | - |
| RH850 | RH850-F1KM-S4 | R7F701648 | 176pin LQFP | ✓ | X | X | - | - | - | - | - | - | - | - | - | - | X | R701648 | - | - | - | V8.03000 | V1.30 | X | - |
| RH850 | RH850-F1KM-S4 | R7F701649 | 176pin LQFP | ✓ | X | X | - | - | - | - | - | - | - | - | - | - | X | R701649 | - | - | - | V8.03000 | V1.30 | X | - |
| RH850 | RH850-F1KM-S4 | R7F701650 | 233pin BGA | ✓ | X | X | - | - | - | - | - | - | - | - | - | - | X | R701650 | - | - | - | V8.03000 | V1.30 | X | - |
| RH850 | RH850-F1KM-S4 | R7F701651 | 233pin BGA | ✓ | X | X | - | - | - | - | - | - | - | - | - | - | X | R701651 | - | - | - | V8.03000 | V1.30 | X | - |
| RH850 | RH850-F1KM-S4 | R7F701652 | 272pin BGA | ✓ | X | X | - | - | - | - | - | - | - | - | - | - | X | R701652 | - | - | - | V8.03000 | V1.30 | X | - |
| RH850 | RH850-F1KM-S4 | R7F701653 | 272pin BGA | ✓ | X | X | - | - | - | - | - | - | - | - | - | - | X | R701653 | - | - | - | V8.03000 | V1.30 | X | - |
| RH850 | RH850-F1KH-DB | R7F701708 | 176pin LQFP | X | X | X | - | - | - | - | - | - | - | - | - | - | X | R701708 | - | - | - | V8.03000 | V1.20 | X | - |
| RH850 | RH850-F1KH-DB | R7F701709 | 176pin LQFP | X | X | X | - | - | - | - | - | - | - | - | - | - | X | R701709 | - | - | - | V8.03000 | V1.20 | X | - |
| RH850 | RH850-F1KH-DB | R7F701710 | 233pin BGA | X | X | X | - | - | - | - | - | - | - | - | - | - | X | R701710 | - | - | - | V8.03000 | V1.20 | X | - |
| RH850 | RH850-F1KH-DB | R7F701711 | 233pin BGA | X | X | X | - | - | - | - | - | - | - | - | - | - | X | R701711 | - | - | - | V8.03000 | V1.20 | X | - |
| RH850 | RH850-F1KH-DB | R7F701714 | 324pin BGA | X | X | X | - | - | - | - | - | - | - | - | - | - | X | R701714 | - | - | - | V8.03000 | V1.20 | X | - |
| RH850 | RH850-F1KH-DB | R7F701715 | 324pin BGA | X | X | X | - | - | - | - | - | - | - | - | - | - | X | R701715 | - | - | - | V8.03000 | V1.20 | X | - |
| RH850 | RH850-P1M | R7F701304 | 100pin LQFP | X | X | X | - | - | - | - | - | - | - | - | - | - | X | R701304 | - | - | - | V8.03000 | V1.41 | X | - |
| RH850 | RH850-P1M | R7F701305 | 100pin LQFP | X | X | X | - | - | - | - | - | - | - | - | - | - | X | R701305 | - | - | - | V8.03000 | V1.41 | X | - |
| RH850 | RH850-P1M | R7F701310 | 144pin LQFP | X | X | X | - | - | - | - | - | - | - | - | - | - | X | R701310 | - | - | - | V8.03000 | V1.41 | X | - |
| RH850 | RH850-P1M | R7F701311 | 144pin LQFP | X | X | X | - | - | - | - | - | - | - | - | - | - | X | R701311 | - | - | - | V8.03000 | V1.41 | X | - |
| RH850 | RH850-P1M | R7F701312 | 100pin LQFP | X | X | X | - | - | - | - | - | - | - | - | - | - | X | R701312 | - | - | - | V8.03000 | V1.41 | X | - |
| RH850 | RH850-P1M | R7F701313 | 100pin LQFP | X | X | X | - | - | - | - | - | - | - | - | - | - | X | R701313 | - | - | - | V8.03000 | V1.41 | X | - |
| RH850 | RH850-P1M | R7F701314 | 144pin LQFP | X | X | X | - | - | - | - | - | - | - | - | - | - | X | R701314 | - | - | - | V8.03000 | V1.41 | X | - |
| RH850 | RH850-P1M | R7F701315 | 144pin LQFP | X | X | X | - | - | - | - | - | - | - | - | - | - | X | R701315 | - | - | - | V8.03000 | V1.41 | X | - |
| RH850 | RH850-P1M | R7F701318 | 144pin LQFP | X | X | X | - | - | - | - | - | - | - | - | - | - | X | R701318 | - | - | - | V8.03000 | V1.41 | X | - |
| RH850 | RH850-P1M | R7F701319 | 144pin LQFP | X | X | X | - | - | - | - | - | - | - | - | - | - | X | R701319 | - | - | - | V8.03000 | V1.41 | X | - |
| RH850 | RH850-P1M | R7F701320 | 100pin LQFP | X | X | X | - | - | - | - | - | - | - | - | - | - | X | R701320 | - | - | - | V8.03000 | V1.41 | X | - |
| RH850 | RH850-P1M | R7F701321 | 100pin LQFP | X | X | X | - | - | - | - | - | - | - | - | - | - | X | R701321 | - | - | - | V8.03000 | V1.41 | X | - |
| RH850 | RH850-P1M | R7F701322 | 144pin LQFP | X | X | X | - | - | - | - | - | - | - | - | - | - | X | R701322 | - | - | - | V8.03000 | V1.41 | X | - |
| RH850 | RH850-P1M | R7F701323 | 144pin LQFP | X | X | X | - | - | - | - | - | - | - | - | - | - | X | R701323 | - | - | - | V8.03000 | V1.41 | X | - |
| RH850 | RH850-P1M-E | R7F701375 | 100pin LQFP | X | X | X | - | - | - | - | - | - | - | - | - | - | X | R701375 | - | - | - | V8.03000 | V1.10 | X | - |
| RH850 | RH850-P1M-E | R7F701376 | 100pin LQFP | X | X | X | - | - | - | - | - | - | - | - | - | - | X | R701376 | - | - | - | V8.03000 | V1.10 | X | - |
| RH850 | RH850-P1M-E | R7F701377 | 144pin LQFP | X | X | X | - | - | - | - | - | - | - | - | - | - | X | R701377 | - | - | - | V8.03000 | V1.10 | X | - |
| RH850 | RH850-P1M-E | R7F701378 | 144pin LQFP | X | X | X | - | - | - | - | - | - | - | - | - | - | X | R701378 | - | - | - | V8.03000 | V1.10 | X | - |
| RH850 | RH850-P1M-E | R7F701379 | 144pin LQFP | X | X | X | - | - | - | - | - | - | - | - | - | - | X | R701379 | - | - | - | V8.03000 | V1.10 | | |

✓ - supported; X - not supported; - Support not planned; Note Refer to the User's Manual of the target device.

| Microcontroller | Nickname/Group | Product Name | Pins, Package type | Smart Configurator | Code Generator | Pin Configurator | Supported functions | | | | | | | | | | Device Specification Name | Default Link Directive Information (78K) | | | Device Information File version | | | Additional information | |
|-----------------|----------------|---------------|--------------------------------------------------|--------------------|----------------|------------------|---------------------|-------------|-------------|----------------------|-----------|----------|--------|--------------------------------------------------|-------------------------|-------------------------|---------------------------|---------------------------------------------|-------------------|-------------------------|---------------------------------|-----------|---------|------------------------|---|
| | | | | | | | Compiler | | | Emulator | | | | Preprocessor (Compiler or linker supporting 68k) | ROM Start address, Size | RAM Start address, Size | | Other Memory Area Name, Start address, Size | *.Productlist.xml | *.78k or *.800 or *.DVF | *.djl | | | | |
| | | | | | | | CA Compiler | CX Compiler | CC Compiler | IECUBE, IE850, IE850 | MINICUBE2 | MINICUBE | E1,E20 | | | | | | | | | E2 | E2 Lite | | |
| RH850 | - | R7F701062xAFF | 80pin LQFP | X | X | X | - | - | ✓ | - | - | - | LPD | LPD | - | X | f701062 | - | - | - | - | V8.030000 | V1.40 | X | - |
| RH850 | - | R7F701064xAFF | 80pin LQFP | X | X | X | - | - | ✓ | - | - | - | LPD | LPD | - | X | f701064 | - | - | - | - | V8.030000 | V1.40 | X | - |
| RH850 | - | R7F701065xAFF | 100pin LQFP | X | X | X | - | - | ✓ | - | - | - | LPD | LPD | - | X | f701065 | - | - | - | - | V8.030000 | V1.40 | X | - |
| RH850 | - | R7F701067xAFF | 100pin LQFP | X | X | X | - | - | ✓ | - | - | - | LPD | LPD | - | X | f701067 | - | - | - | - | V8.030000 | V1.40 | X | - |
| RH850 | - | R7F701069xAFF | 100pin LQFP | X | X | X | - | - | ✓ | - | - | - | LPD | LPD | - | X | f701069 | - | - | - | - | V8.030000 | V1.40 | X | - |
| RH850 | - | R7F701071xAFF | 144pin LQFP | X | X | X | - | - | ✓ | - | - | - | LPD | LPD | - | X | f701071 | - | - | - | - | V8.030000 | V1.40 | X | - |
| RH850 | - | R7F701205 | 304pin BGA, 252pin BGA | X | X | X | - | - | ✓ | ✓ | - | - | LPD | LPD | - | X | f701205 | - | - | - | - | V8.030000 | V1.31 | X | - |
| RH850 | - | R7F701206 | 304pin BGA, 252pin BGA, 176pin LQFP, 144pin LQFP | X | X | X | - | - | ✓ | ✓ | - | - | LPD | LPD | - | X | f701206 | - | - | - | - | V8.030000 | V1.31 | X | - |
| RH850 | - | R7F701207 | 252pin BGA, 176pin LQFP, 144pin LQFP | X | X | X | - | - | ✓ | ✓ | - | - | LPD | LPD | - | X | f701207 | - | - | - | - | V8.030000 | V1.31 | X | - |
| RH850 | - | R7F701211 | 304pin BGA, 252pin BGA | X | X | X | - | - | ✓ | ✓ | - | - | LPD | LPD | - | X | f701211 | - | - | - | - | V8.030000 | V1.20 | X | - |
| RH850 | - | R7F701212 | 304pin BGA, 252pin BGA | X | X | X | - | - | ✓ | ✓ | - | - | LPD | LPD | - | X | f701212 | - | - | - | - | V8.030000 | V1.20 | X | - |
| RH850 | - | R7F701211A | 304pin BGA, 252pin BGA | X | X | X | - | - | ✓ | ✓ | - | - | LPD | LPD | - | X | f701211A | - | - | - | - | V8.030000 | V1.10 | X | - |
| RH850 | - | R7F701212A | 304pin BGA, 252pin BGA | X | X | X | - | - | ✓ | ✓ | - | - | LPD | LPD | - | X | f701212A | - | - | - | - | V8.030000 | V1.10 | X | - |
| RH850 | RH850/E2M | R7F702020A | 373pin BGA, 292pin BGA | X | X | X | - | - | ✓ | ✓ | - | - | LPD | LPD | - | X | f702020A | - | - | - | - | V8.030001 | V1.30 | X | - |
| RH850 | - | R7F702202C | 292pin BGA | X | X | X | - | - | ✓ | ✓ | - | - | LPD | LPD | - | X | f702202C | - | - | - | - | V8.030001 | V1.30 | X | - |
| RH850 | - | R7F702204C | 373pin BGA | X | X | X | - | - | ✓ | ✓ | - | - | LPD | LPD | - | X | f702204C | - | - | - | - | V8.030001 | V1.30 | X | - |
| RH850 | - | R7F702211A | 468pin BGA, 373pin BGA | X | X | X | - | - | ✓ | ✓ | - | - | LPD | LPD | - | X | f702211A | - | - | - | - | V8.030000 | V1.10 | X | - |
| RH850 | - | R7F702212A | 468pin BGA, 373pin BGA | X | X | X | - | - | ✓ | ✓ | - | - | LPD | LPD | - | X | f702212A | - | - | - | - | V8.030000 | V1.10 | X | - |
| RH850 | RH850/E2UH | R7F702012A | 468pin BGA, 373pin BGA | X | X | X | - | - | ✓ | ✓ | - | - | LPD | LPD | - | X | f702012A | - | - | - | - | V8.030000 | V1.10 | X | - |
| RH850 | RH850/E2H | R7F702011 | 468pin BGA, 373pin BGA | X | X | X | - | - | ✓ | ✓ | - | - | LPD | LPD | - | X | f702011 | - | - | - | - | V8.030000 | V1.20 | X | - |
| RH850 | - | R7F702219A | 516pin BGA, 292pin BGA | X | X | X | - | - | ✓ | ✓ | - | - | LPD | LPD | - | X | f702219A | - | - | - | - | V8.040000 | V1.20 | X | - |
| RH850 | RH850/UZA16 | R7F702300 | 516pin BGA, 292pin BGA | ✓ | X | X | - | - | ✓ | ✓ | - | - | LPD | LPD | - | X | f702300 | - | - | - | - | V8.040000 | V1.20 | X | - |
| RH850 | RH850/UZA8 | R7F702301 | 373pin BGA, 292pin BGA | ✓ | X | X | - | - | ✓ | ✓ | - | - | LPD | LPD | - | X | f702301 | - | - | - | - | V8.040000 | V1.00 | X | - |

✓ : supported; X : not supported; - : Support not planned; Note Refer to the User's Manual of the target device.

| Microcontroller | Nickname/Group | Product Name | Pins, Package type | Smart Configurator | Code Generator | Pin Configurator | Supported functions | | | | Emulator | | | Device Specification Name | ROM Start address, Size | RAM Start address, Size | Default Link Directive Information (F9K) | | | Additional information | | | | |
|-----------------|----------------|---------------|--------------------|--------------------|----------------|------------------|---------------------|-------------|-------------|----------------------|-----------|-------------|--------|---------------------------|-------------------------|-------------------------|------------------------------------------|---------|---------------------------------------------------|------------------------|-----------------|-------------------------|-------|---|
| | | | | | | | CA Compiler | CX Compiler | CC Compiler | IECUBE, IE850, IE850 | MINICUBE2 | MINICUBE | E1 E20 | | | | E2 | E2 Lite | Preprocessor Directive Device supporting the file | | Productlist.xml | *.78k or *.800 or *.DVF | *.dcl | |
| V850 | V850E/MA3 | µPD703131A | 144GJ | X | X | X | ✓ | - | - | - | ✓ | Serial/JTAG | - | - | - | X | 3131a | - | - | - | V3.00001 | V2.10 | X | - |
| V850 | V850E/MA3 | µPD703131AY | 144GJ | X | X | X | ✓ | - | - | - | ✓ | Serial/JTAG | - | - | - | X | 3131ay | - | - | - | V3.00001 | V2.00 | X | - |
| V850 | V850E/MA3 | µPD703131BY | 144GJ | X | X | X | ✓ | - | - | - | ✓ | Serial/JTAG | - | - | - | X | 3131by | - | - | - | V3.00001 | V2.10 | X | - |
| V850 | V850E/MA3 | µPD703132A | 144GJ | X | X | X | ✓ | - | - | - | ✓ | Serial/JTAG | - | - | - | X | 3132a | - | - | - | V3.00001 | V2.00 | X | - |
| V850 | V850E/MA3 | µPD703132AY | 144GJ | X | X | X | ✓ | - | - | - | ✓ | Serial/JTAG | - | - | - | X | 3132ay | - | - | - | V3.00001 | V2.00 | X | - |
| V850 | V850E/MA3 | µPD703132BY | 144GJ | X | X | X | ✓ | - | - | - | ✓ | Serial/JTAG | - | - | - | X | 3132by | - | - | - | V3.00001 | V2.10 | X | - |
| V850 | V850E/MA3 | µPD703133A | 144GJ | X | X | X | ✓ | - | - | - | ✓ | Serial/JTAG | - | - | - | X | 3133a | - | - | - | V3.00001 | V2.00 | X | - |
| V850 | V850E/MA3 | µPD703133AY | 144GJ | X | X | X | ✓ | - | - | - | ✓ | Serial/JTAG | - | - | - | X | 3133ay | - | - | - | V3.00001 | V2.00 | X | - |
| V850 | V850E/MA3 | µPD703133BY | 144GJ | X | X | X | ✓ | - | - | - | ✓ | Serial/JTAG | - | - | - | X | 3133by | - | - | - | V3.00001 | V2.10 | X | - |
| V850 | V850E/MA3 | µPD703134A | 144GJ | X | X | X | ✓ | - | - | - | ✓ | Serial/JTAG | - | - | - | X | 3134a | - | - | - | V3.00001 | V2.00 | X | - |
| V850 | V850E/MA3 | µPD703134AY | 144GJ | X | X | X | ✓ | - | - | - | ✓ | Serial/JTAG | - | - | - | X | 3134ay | - | - | - | V3.00001 | V2.00 | X | - |
| V850 | V850E/MA3 | µPD703134BY | 144GJ | X | X | X | ✓ | - | - | - | ✓ | Serial/JTAG | - | - | - | X | 3134by | - | - | - | V3.00001 | V2.10 | X | - |
| V850 | V850E/MA3 | µPD703136A | 144GJ | X | X | X | ✓ | - | - | - | ✓ | Serial/JTAG | - | - | - | X | 3136a | - | - | - | V3.00001 | V2.00 | X | - |
| V850 | V850E/MA3 | µPD703136AY | 144GJ | X | X | X | ✓ | - | - | - | ✓ | Serial/JTAG | - | - | - | X | 3136ay | - | - | - | V3.00001 | V2.00 | X | - |
| V850 | V850E/MA3 | µPD703136BY | 144GJ | X | X | X | ✓ | - | - | - | ✓ | Serial/JTAG | - | - | - | X | 3136by | - | - | - | V3.00001 | V2.10 | X | - |
| V850 | V850E/MA3 | µPD703138A | 144GJ | X | X | X | ✓ | - | - | - | ✓ | Serial/JTAG | - | - | - | X | 3138a | - | - | - | V3.00001 | V2.00 | X | - |
| V850 | V850E/MA3 | µPD703138AY | 144GJ | X | X | X | ✓ | - | - | - | ✓ | Serial/JTAG | - | - | - | X | 3138ay | - | - | - | V3.00001 | V2.00 | X | - |
| V850 | V850E/MA3 | µPD703138BY | 144GJ | X | X | X | ✓ | - | - | - | ✓ | Serial/JTAG | - | - | - | X | 3138by | - | - | - | V3.00001 | V2.10 | X | - |
| V850 | V850E/IA3 | µPD703183 | 80GK | X | X | X | ✓ | - | - | - | ✓ | Serial/JTAG | - | - | - | X | 3183 | - | - | - | V3.00001 | V3.00 | X | - |
| V850 | V850E/IA3 | µPD703184 | 80GK | X | X | X | ✓ | - | - | - | ✓ | Serial/JTAG | - | - | - | X | 3184 | - | - | - | V3.00001 | V3.00 | X | - |
| V850 | V850E/IA4 | µPD703185 | 100GC,100GF | X | X | X | ✓ | - | - | - | ✓ | Serial/JTAG | - | - | - | X | 3185 | - | - | - | V3.00001 | V3.00 | X | - |
| V850 | V850E/IA4 | µPD703186 | 100GC,100GF | X | X | X | ✓ | - | - | - | ✓ | Serial/JTAG | - | - | - | X | 3186 | - | - | - | V3.00001 | V3.00 | X | - |
| V850 | V850E/IA4 | µPD703186 | 100GC,100GF | X | X | X | ✓ | - | - | - | ✓ | Serial/JTAG | - | - | - | X | 3186 | - | - | - | V3.00001 | V2.10 | X | - |
| V850 | V850E/SJ3-H | µPD70F3474 | 144GJ | X | ✓ | ✓ | ✓ | - | - | - | ✓ | Serial/JTAG | - | - | - | ✓ | 3474 | - | - | - | V3.00001 | V1.00 | X | - |
| V850 | V850E/SJ3-H | µPD70F3474_EX | 144GJ | X | ✓ | ✓ | ✓ | - | - | - | ✓ | Serial/JTAG | - | - | - | ✓ | 3474ex | - | - | - | V3.00001 | V1.00 | X | - |
| V850 | V850E/SJ3-H | µPD70F3475 | 144GJ | X | ✓ | ✓ | ✓ | - | - | - | ✓ | Serial/JTAG | - | - | - | ✓ | 3475 | - | - | - | V3.00001 | V1.00 | X | - |
| V850 | V850E/SJ3-H | µPD70F3475_EX | 144GJ | X | ✓ | ✓ | ✓ | - | - | - | ✓ | Serial/JTAG | - | - | - | ✓ | 3475ex | - | - | - | V3.00001 | V1.00 | X | - |
| V850 | V850E/SJ3-H | µPD70F3476 | 144GJ | X | ✓ | ✓ | ✓ | - | - | - | ✓ | Serial/JTAG | - | - | - | ✓ | 3476 | - | - | - | V3.00001 | V1.00 | X | - |
| V850 | V850E/SJ3-H | µPD70F3476_EX | 144GJ | X | ✓ | ✓ | ✓ | - | - | - | ✓ | Serial/JTAG | - | - | - | ✓ | 3476ex | - | - | - | V3.00001 | V1.00 | X | - |
| V850 | V850E/SJ3-H | µPD70F3477 | 144GJ | X | ✓ | ✓ | ✓ | - | - | - | ✓ | Serial/JTAG | - | - | - | ✓ | 3477 | - | - | - | V3.00001 | V1.00 | X | - |
| V850 | V850E/SJ3-H | µPD70F3477_EX | 144GJ | X | ✓ | ✓ | ✓ | - | - | - | ✓ | Serial/JTAG | - | - | - | ✓ | 3477ex | - | - | - | V3.00001 | V1.00 | X | - |
| V850 | V850E/SJ3-H | µPD70F3478 | 144GJ | X | ✓ | ✓ | ✓ | - | - | - | ✓ | Serial/JTAG | - | - | - | ✓ | 3478 | - | - | - | V3.00001 | V1.00 | X | - |
| V850 | V850E/SJ3-H | µPD70F3478_EX | 144GJ | X | ✓ | ✓ | ✓ | - | - | - | ✓ | Serial/JTAG | - | - | - | ✓ | 3478ex | - | - | - | V3.00001 | V1.00 | X | - |
| V850 | V850E/SJ3-H | µPD70F3479 | 144GJ | X | ✓ | ✓ | ✓ | - | - | - | ✓ | Serial/JTAG | - | - | - | ✓ | 3479 | - | - | - | V3.00001 | V1.00 | X | - |
| V850 | V850E/SJ3-H | µPD70F3479_EX | 144GJ | X | ✓ | ✓ | ✓ | - | - | - | ✓ | Serial/JTAG | - | - | - | ✓ | 3479ex | - | - | - | V3.00001 | V1.00 | X | - |
| V850 | V850E/SJ3-H | µPD70F3931_EX | 144GJ | X | ✓ | ✓ | ✓ | - | - | - | ✓ | Serial/JTAG | - | - | - | ✓ | 3931ex | - | - | - | V3.00001 | V1.00 | X | - |
| V850 | V850E/SJ3-H | µPD70F3932_EX | 144GJ | X | ✓ | ✓ | ✓ | - | - | - | ✓ | Serial/JTAG | - | - | - | ✓ | 3932ex | - | - | - | V3.00001 | V1.00 | X | - |
| V850 | V850E/SJ3-H | µPD70F3933_EX | 144GJ | X | ✓ | ✓ | ✓ | - | - | - | ✓ | Serial/JTAG | - | - | - | ✓ | 3933ex | - | - | - | V3.00001 | V1.00 | X | - |
| V850 | V850E/SJ3-H | µPD70F3934 | 144GJ | X | ✓ | ✓ | ✓ | - | - | - | ✓ | Serial/JTAG | - | - | - | ✓ | 3934 | - | - | - | V3.00001 | V1.00 | X | - |
| V850 | V850E/SJ3-H | µPD70F3934_EX | 144GJ | X | ✓ | ✓ | ✓ | - | - | - | ✓ | Serial/JTAG | - | - | - | ✓ | 3934ex | - | - | - | V3.00001 | V1.00 | X | - |
| V850 | V850E/SJ3-H | µPD70F3935 | 144GJ | X | ✓ | ✓ | ✓ | - | - | - | ✓ | Serial/JTAG | - | - | - | ✓ | 3935 | - | - | - | V3.00001 | V1.00 | X | - |
| V850 | V850E/SJ3-H | µPD70F3935_EX | 144GJ | X | ✓ | ✓ | ✓ | - | - | - | ✓ | Serial/JTAG | - | - | - | ✓ | 3935ex | - | - | - | V3.00001 | V1.00 | X | - |
| V850 | V850E/SJ3-H | µPD70F3936 | 144GJ | X | ✓ | ✓ | ✓ | - | - | - | ✓ | Serial/JTAG | - | - | - | ✓ | 3936 | - | - | - | V3.00001 | V1.00 | X | - |
| V850 | V850E/SJ3-H | µPD70F3936_EX | 144GJ | X | ✓ | ✓ | ✓ | - | - | - | ✓ | Serial/JTAG | - | - | - | ✓ | 3936ex | - | - | - | V3.00001 | V1.00 | X | - |
| V850 | V850E/SJ3-H | µPD70F3937 | 144GJ | X | ✓ | ✓ | ✓ | - | - | - | ✓ | Serial/JTAG | - | - | - | ✓ | 3937 | - | - | - | V3.00001 | V1.00 | X | - |
| V850 | V850E/SJ3-H | µPD70F3937_EX | 144GJ | X | ✓ | ✓ | ✓ | - | - | - | ✓ | Serial/JTAG | - | - | - | ✓ | 3937ex | - | - | - | V3.00001 | V1.00 | X | - |
| V850 | V850E/SJ3-H | µPD70F3938 | 144GJ | X | ✓ | ✓ | ✓ | - | - | - | ✓ | Serial/JTAG | - | - | - | ✓ | 3938 | - | - | - | V3.00001 | V1.00 | X | - |
| V850 | V850E/SJ3-H | µPD70F3938_EX | 144GJ | X | ✓ | ✓ | ✓ | - | - | - | ✓ | Serial/JTAG | - | - | - | ✓ | 3938ex | - | - | - | V3.00001 | V1.00 | X | - |
| V850 | V850E/SJ3-H | µPD70F3939 | 144GJ | X | ✓ | ✓ | ✓ | - | - | - | ✓ | Serial/JTAG | - | - | - | ✓ | 3939 | - | - | - | V3.00001 | V1.00 | X | - |
| V850 | V850E/SJ3-H | µPD70F3939_EX | 144GJ | X | ✓ | ✓ | ✓ | - | - | - | ✓ | Serial/JTAG | - | - | - | ✓ | 3939ex | - | - | - | V3.00001 | V1.00 | X | - |
| V850 | V850E/SK3-H | µPD70F3480 | 176GM | X | ✓ | ✓ | ✓ | - | - | - | ✓ | Serial/JTAG | - | - | - | ✓ | 3480 | - | - | - | V3.00001 | V1.00 | X | - |
| V850 | V850E/SK3-H | µPD70F3480_EX | 176GM | X | ✓ | ✓ | ✓ | - | - | - | ✓ | Serial/JTAG | - | - | - | ✓ | 3480ex | - | - | - | V3.00001 | V1.00 | X | - |
| V850 | V850E/SK3-H | µPD70F3481 | 176GM | X | ✓ | ✓ | ✓ | - | - | - | ✓ | Serial/JTAG | - | - | - | ✓ | 3481 | - | - | - | V3.00001 | V1.00 | X | - |
| V850 | V850E/SK3-H | µPD70F3481_EX | 176GM | X | ✓ | ✓ | ✓ | - | - | - | ✓ | Serial/JTAG | - | - | - | ✓ | 3481ex | - | - | - | V3.00001 | V1.00 | X | - |
| V850 | V850E/SK3-H | µPD70F3482 | 176GM | X | ✓ | ✓ | ✓ | - | - | - | ✓ | Serial/JTAG | - | - | - | ✓ | 3482 | - | - | - | V3.00001 | V1.00 | X | - |
| V850 | V850E/SK3-H | µPD70F3482_EX | 176GM | X | ✓ | ✓ | ✓ | - | - | - | ✓ | Serial/JTAG | - | - | - | ✓ | 3482ex | - | - | - | V3.00001 | V1.00 | X | - |
| V850 | V850E/SK3-H | µPD70F3925 | 176GM | X | ✓ | ✓ | ✓ | - | - | - | ✓ | Serial/JTAG | - | - | - | ✓ | 3925 | - | - | - | V3.00001 | V1.00 | X | - |
| V850 | V850E/SK3-H | µPD70F3925_EX | 176GM | X | ✓ | ✓ | ✓ | - | - | - | ✓ | Serial/JTAG | - | - | - | ✓ | 3925ex | - | - | - | V3.00001 | V1.00 | X | - |
| V850 | V850E/SK3-H | µPD70F3926 | 176GM | X | ✓ | ✓ | ✓ | - | - | - | ✓ | Serial/JTAG | - | - | - | ✓ | 3926 | - | - | - | V3.00001 | V1.00 | X | - |
| V850 | V850E/SK3-H | µPD70F3926_EX | 176GM | X | ✓ | ✓ | ✓ | - | - | - | ✓ | Serial/JTAG | - | - | - | ✓ | 3926ex | - | - | - | V3.00001 | V1.00 | X | - |
| V850 | V850E/SK3-H | µPD70F3927 | 176GM | X | ✓ | ✓ | ✓ | - | - | - | ✓ | Serial/JTAG | - | - | - | ✓ | 3927 | - | - | - | V3.00001 | V1.00 | X | - |
| V850 | V850E/SK3-H | µPD70F3927_EX | 176GM | X | ✓ | ✓ | ✓ | - | - | - | ✓ | Serial/JTAG | - | - | - | ✓ | 3927ex | - | - | - | V3.00001 | V1.00 | X | - |
| V850 | V850E/SK3-H | µPD70F3486 | 176GM | X | ✓ | ✓ | ✓ | - | - | - | ✓ | Serial/JTAG | - | - | - | ✓ | 3486 | - | - | - | V3.00001 | V1.00 | X | - |
| V850 | V850E/SK3-H | µPD70F3486_EX | 176GM | X | ✓ | ✓ | ✓ | - | - | - | ✓ | Serial/JTAG | - | - | - | ✓ | 3486ex | - | - | - | V3.00001 | V1.00 | X | - |
| V850 | V850E/SK3-H | µPD70F3487 | 176GM | X | ✓ | ✓ | ✓ | - | - | - | ✓ | Serial/JTAG | - | - | - | ✓ | 3487 | - | - | - | V3.00001 | V1.00 | X | - |
| V850 | V850E/SK3-H | µPD70F3487_EX | 176GM | X | ✓ | ✓ | ✓ | - | - | - | ✓ | Serial/JTAG | - | - | - | ✓ | 3487ex | - | - | - | V3.00001 | V1.00 | X | - |
| V850 | V850E/SK3-H | µPD70F3488 | 176GM | X | ✓ | ✓ | ✓ | - | - | - | ✓ | Serial/JTAG | - | - | - | ✓ | 3488 | - | - | - | V3.00001 | | | |

| Microcontroller | Nickname/Group | Product Name | Pins, Package type | Supported functions | | | | | | | | | | | | | Device Specification Name | Default Link Directive Information (7.8K) | | | Device Information File version | | | Additional information |
|-----------------|----------------|--------------|--------------------|---------------------|----------------|------------------|-------------|-------------|-------------|----------------------|-----------|----------|-------------|----|---------|--------------------------------------------------|---------------------------|-------------------------------------------|-------------------------|---------------------------------------------|---------------------------------|-------------------------|-------|------------------------|
| | | | | Smart Configurator | Code Generator | Pin Configurator | Compiler | | | Emulator | | | | | | Peripheral Simulator, Simulator supporting C/C++ | | ROM Start address, Size | RAM Start address, Size | Other Memory Area Name, Start address, Size | *_Productlist.xml | *_78k or *_800 or *_DVF | *_ddi | |
| | | | | | | | CA Compiler | CX Compiler | CC Compiler | IECUBE, IE850, IE850 | MINICUBE2 | MINICUBE | E1, E20 | E2 | E2 Lite | | | | | | | | | |
| V850 | V850ES,SG2 | μPD703260V | 100GC,100GF | X | X | X | ✓ | — | — | ✓ | ✓ | ✓ | Serial/JTAG | — | — | ✓ | 3260y | — | — | — | V3.000001 | V2.11 | X | — |

✓ : supported; X : not supported; - : Support not planned; Note Refer to the User's Manual of the target device.

| Microcontroller | Nickname/Group | Product Name | Pins, Package type | Smart Configurator | Code Generator | Pin Configurator | Supported functions | | | | | | | Emulator | Specification E1, E20, E2, E21, E22 | Device Specification Name | ROM Start address, Size | RAM Start address, Size | Other Memory Area Name, Start address, Size | Device Information File version | | | Additional information |
|-----------------|----------------|--------------|---------------------|--------------------|----------------|------------------|---------------------|-------------|-------------|----------------------|-----------|----------|---------|-------------|-------------------------------------|---------------------------|-------------------------|-------------------------|---------------------------------------------|---------------------------------|-------|-----|------------------------|
| | | | | | | | CA Compiler | CX Compiler | CC Compiler | IECUBE, IE850, IE850 | MINICUBE2 | MINICUBE | E1, E20 | | | | | | | E2 | E21 | E22 | |
| V850 | V850ES.SJ3 | µPD70F3348 | 144GJ | X | X | X | ✓ | - | - | - | ✓ | ✓ | ✓ | Serial/UTAG | - | - | - | - | - | V3.00001 | V1.10 | X | - |
| V850 | V850ES.SJ3 | µPD70F3354 | 144GJ | X | X | X | ✓ | - | - | - | ✓ | ✓ | ✓ | Serial/UTAG | - | - | - | - | - | V3.00001 | V1.10 | X | - |
| V850 | V850ES.SJ3 | µPD70F3355 | 144GJ | X | X | X | ✓ | - | - | - | ✓ | ✓ | ✓ | Serial/UTAG | - | - | - | - | - | V3.00001 | V1.10 | X | - |
| V850 | V850ES.SJ3 | µPD70F3356 | 144GJ | X | X | X | ✓ | - | - | - | ✓ | ✓ | ✓ | Serial/UTAG | - | - | - | - | - | V3.00001 | V1.10 | X | - |
| V850 | V850ES.SJ3 | µPD70F3357 | 144GJ | X | X | X | ✓ | - | - | - | ✓ | ✓ | ✓ | Serial/UTAG | - | - | - | - | - | V3.00001 | V1.10 | X | - |
| V850 | V850ES.SJ3 | µPD70F3358 | 144GJ | X | X | X | ✓ | - | - | - | ✓ | ✓ | ✓ | Serial/UTAG | - | - | - | - | - | V3.00001 | V1.10 | X | - |
| V850 | V850ES.SJ3 | µPD70F3364 | 144GJ | X | X | X | ✓ | - | - | - | ✓ | ✓ | ✓ | Serial/UTAG | - | - | - | - | - | V3.00001 | V1.10 | X | - |
| V850 | V850ES.SJ3 | µPD70F3365 | 144GJ | X | X | X | ✓ | - | - | - | ✓ | ✓ | ✓ | Serial/UTAG | - | - | - | - | - | V3.00001 | V1.10 | X | - |
| V850 | V850ES.SJ3 | µPD70F3366 | 144GJ | X | X | X | ✓ | - | - | - | ✓ | ✓ | ✓ | Serial/UTAG | - | - | - | - | - | V3.00001 | V1.10 | X | - |
| V850 | V850ES.SJ3 | µPD70F3367 | 144GJ | X | X | X | ✓ | - | - | - | ✓ | ✓ | ✓ | Serial/UTAG | - | - | - | - | - | V3.00001 | V1.10 | X | - |
| V850 | V850ES.SJ3 | µPD70F3368 | 144GJ | X | X | X | ✓ | - | - | - | ✓ | ✓ | ✓ | Serial/UTAG | - | - | - | - | - | V3.00001 | V1.10 | X | - |
| V850 | V850E.F3 | µPD70F3451 | 80GC | X | X | X | ✓ | - | - | - | ✓ | ✓ | ✓ | Serial/UTAG | - | - | - | - | - | V3.00001 | V1.00 | X | - |
| V850 | V850E.F3 | µPD70F3452 | 80GC | X | X | X | ✓ | - | - | - | ✓ | ✓ | ✓ | Serial/UTAG | - | - | - | - | - | V3.00001 | V1.00 | X | - |
| V850 | V850E.IG3 | µPD70F3453 | 100GC, 100GF | X | X | X | ✓ | - | - | - | ✓ | ✓ | ✓ | Serial/UTAG | - | - | - | - | - | V3.00001 | V1.00 | X | - |
| V850 | V850E.IG3 | µPD70F3454 | 100GC, 100GF, 161F1 | X | X | X | ✓ | - | - | - | ✓ | ✓ | ✓ | Serial/UTAG | - | - | - | - | - | V3.00001 | V1.00 | X | - |
| V850 | V850E.SHE2 | µPD70F3700 | 64GB | X | X | X | ✓ | - | - | - | ✓ | ✓ | ✓ | Serial/UTAG | - | - | - | - | - | V3.00001 | V1.00 | X | - |
| V850 | V850E.SHE2 | µPD70F3701 | 64GB | X | X | X | ✓ | - | - | - | ✓ | ✓ | ✓ | Serial/UTAG | - | - | - | - | - | V3.00001 | V1.00 | X | - |
| V850 | V850E.SHF2 | µPD70F3702 | 80GC | X | X | X | ✓ | - | - | - | ✓ | ✓ | ✓ | Serial/UTAG | - | - | - | - | - | V3.00001 | V1.11 | X | - |
| V850 | V850E.SHF2 | µPD70F3703 | 80GC | X | X | X | ✓ | - | - | - | ✓ | ✓ | ✓ | Serial/UTAG | - | - | - | - | - | V3.00001 | V1.00 | X | - |
| V850 | V850E.SHF2 | µPD70F3704 | 80GC | X | X | X | ✓ | - | - | - | ✓ | ✓ | ✓ | Serial/UTAG | - | - | - | - | - | V3.00001 | V1.00 | X | - |
| V850 | V850E.SHG2 | µPD70F3706 | 100GC | X | X | X | ✓ | - | - | - | ✓ | ✓ | ✓ | Serial/UTAG | - | - | - | - | - | V3.00001 | V1.00 | X | - |
| V850 | V850E.SHG2 | µPD70F3707 | 100GC | X | X | X | ✓ | - | - | - | ✓ | ✓ | ✓ | Serial/UTAG | - | - | - | - | - | V3.00001 | V1.00 | X | - |
| V850 | V850E.SHJ2 | µPD70F3708 | 144GJ | X | X | X | ✓ | - | - | - | ✓ | ✓ | ✓ | Serial/UTAG | - | - | - | - | - | V3.00001 | V1.00 | X | - |
| V850 | V850E.SHJ2 | µPD70F3710 | 144GJ | X | X | X | ✓ | - | - | - | ✓ | ✓ | ✓ | Serial/UTAG | - | - | - | - | - | V3.00001 | V1.00 | X | - |
| V850 | V850E.SHJ2 | µPD70F3711 | 144GJ | X | X | X | ✓ | - | - | - | ✓ | ✓ | ✓ | Serial/UTAG | - | - | - | - | - | V3.00001 | V1.00 | X | - |
| V850 | V850E.SHJ2 | µPD70F3712 | 144GJ | X | X | X | ✓ | - | - | - | ✓ | ✓ | ✓ | Serial/UTAG | - | - | - | - | - | V3.00001 | V1.00 | X | - |
| V850 | V850E.SHJ2 | µPD70F3713 | 64GC | X | X | X | ✓ | - | - | - | ✓ | ✓ | ✓ | Serial/UTAG | - | - | - | - | - | V3.00001 | V1.01 | X | - |
| V850 | V850E.SHE2 | µPD70F3714 | 64GC | X | X | X | ✓ | - | - | - | ✓ | ✓ | ✓ | Serial/UTAG | - | - | - | - | - | V3.00001 | V1.01 | X | - |
| V850 | V850E.SJG2 | µPD70F3715 | 100GC, 100GF | X | X | X | ✓ | - | - | - | ✓ | ✓ | ✓ | Serial/UTAG | - | - | - | - | - | V3.00001 | V1.00 | X | - |
| V850 | V850E.SJG2 | µPD70F3716 | 100GC, 100GF | X | X | X | ✓ | - | - | - | ✓ | ✓ | ✓ | Serial/UTAG | - | - | - | - | - | V3.00001 | V1.00 | X | - |
| V850 | V850E.SJG2 | µPD70F3717 | 100GC, 100GF | X | X | X | ✓ | - | - | - | ✓ | ✓ | ✓ | Serial/UTAG | - | - | - | - | - | V3.00001 | V1.00 | X | - |
| V850 | V850E.SJG2 | µPD70F3718 | 100GC, 100GF | X | X | X | ✓ | - | - | - | ✓ | ✓ | ✓ | Serial/UTAG | - | - | - | - | - | V3.00001 | V1.00 | X | - |
| V850 | V850E.SJG2 | µPD70F3719 | 100GC, 100GF | X | X | X | ✓ | - | - | - | ✓ | ✓ | ✓ | Serial/UTAG | - | - | - | - | - | V3.00001 | V1.00 | X | - |
| V850 | V850E.SJG2 | µPD70F3720 | 144GJ | X | X | X | ✓ | - | - | - | ✓ | ✓ | ✓ | Serial/UTAG | - | - | - | - | - | V3.00001 | V1.00 | X | - |
| V850 | V850E.SJG2 | µPD70F3721 | 144GJ | X | X | X | ✓ | - | - | - | ✓ | ✓ | ✓ | Serial/UTAG | - | - | - | - | - | V3.00001 | V1.00 | X | - |
| V850 | V850E.SJG2 | µPD70F3722 | 144GJ | X | X | X | ✓ | - | - | - | ✓ | ✓ | ✓ | Serial/UTAG | - | - | - | - | - | V3.00001 | V1.00 | X | - |
| V850 | V850E.SJG2 | µPD70F3723 | 144GJ | X | X | X | ✓ | - | - | - | ✓ | ✓ | ✓ | Serial/UTAG | - | - | - | - | - | V3.00001 | V1.00 | X | - |
| V850 | V850E.SJG2 | µPD70F3724 | 144GJ | X | X | X | ✓ | - | - | - | ✓ | ✓ | ✓ | Serial/UTAG | - | - | - | - | - | V3.00001 | V1.00 | X | - |
| V850 | V850E.SKE2 | µPD70F3726 | 64GC | X | X | X | ✓ | - | - | - | ✓ | ✓ | ✓ | Serial/UTAG | - | - | - | - | - | V3.00001 | V1.00 | X | - |
| V850 | V850E.SKE2 | µPD70F3728 | 80GC | X | X | X | ✓ | - | - | - | ✓ | ✓ | ✓ | Serial/UTAG | - | - | - | - | - | V3.00001 | V1.00 | X | - |
| V850 | V850E.SKE2 | µPD70F3729 | 80GC | X | X | X | ✓ | - | - | - | ✓ | ✓ | ✓ | Serial/UTAG | - | - | - | - | - | V3.00001 | V1.00 | X | - |
| V850 | V850E.SKE2 | µPD70F3731 | 100GC, 100GF | X | X | X | ✓ | - | - | - | ✓ | ✓ | ✓ | Serial/UTAG | - | - | - | - | - | V3.00001 | V1.00 | X | - |
| V850 | V850E.SKE2 | µPD70F3732 | 100GC, 100GF | X | X | X | ✓ | - | - | - | ✓ | ✓ | ✓ | Serial/UTAG | - | - | - | - | - | V3.00001 | V1.00 | X | - |
| V850 | V850E.SKE2 | µPD70F3733 | 144GJ | X | X | X | ✓ | - | - | - | ✓ | ✓ | ✓ | Serial/UTAG | - | - | - | - | - | V3.00001 | V1.00 | X | - |
| V850 | V850E.SKE2 | µPD70F3734 | 144GJ | X | X | X | ✓ | - | - | - | ✓ | ✓ | ✓ | Serial/UTAG | - | - | - | - | - | V3.00001 | V1.00 | X | - |
| V850 | V850E.SJC3-L | µPD70F3797 | 40K8 | X | ✓ | ✓ | ✓ | - | - | - | ✓ | ✓ | ✓ | Serial/UTAG | - | - | - | - | - | V3.00001 | V2.00 | X | - |
| V850 | V850E.SJC3-L | µPD70F3798 | 40K8 | X | ✓ | ✓ | ✓ | - | - | - | ✓ | ✓ | ✓ | Serial/UTAG | - | - | - | - | - | V3.00001 | V2.00 | X | - |
| V850 | V850E.SJC3-L | µPD70F3799 | 40K8 | X | ✓ | ✓ | ✓ | - | - | - | ✓ | ✓ | ✓ | Serial/UTAG | - | - | - | - | - | V3.00001 | V2.00 | X | - |
| V850 | V850E.SJC3-L | µPD70F3800 | 40K8 | X | ✓ | ✓ | ✓ | - | - | - | ✓ | ✓ | ✓ | Serial/UTAG | - | - | - | - | - | V3.00001 | V2.00 | X | - |
| V850 | V850E.SJC3-L | µPD70F3838 | 40K8 | X | ✓ | ✓ | ✓ | - | - | - | ✓ | ✓ | ✓ | Serial/UTAG | - | - | - | - | - | V3.00001 | V2.00 | X | - |
| V850 | V850E.SJC3-L | µPD70F3801 | 48K8 | X | ✓ | ✓ | ✓ | - | - | - | ✓ | ✓ | ✓ | Serial/UTAG | - | - | - | - | - | V3.00001 | V2.00 | X | - |
| V850 | V850E.SJC3-L | µPD70F3802 | 48K8 | X | ✓ | ✓ | ✓ | - | - | - | ✓ | ✓ | ✓ | Serial/UTAG | - | - | - | - | - | V3.00001 | V2.00 | X | - |
| V850 | V850E.SJC3-L | µPD70F3802 | 48K8 | X | ✓ | ✓ | ✓ | - | - | - | ✓ | ✓ | ✓ | Serial/UTAG | - | - | - | - | - | V3.00001 | V2.00 | X | - |
| V850 | V850E.SJC3-L | µPD70F3803 | 48K8 | X | ✓ | ✓ | ✓ | - | - | - | ✓ | ✓ | ✓ | Serial/UTAG | - | - | - | - | - | V3.00001 | V2.00 | X | - |
| V850 | V850E.SJC3-L | µPD70F3803 | 48K8 | X | ✓ | ✓ | ✓ | - | - | - | ✓ | ✓ | ✓ | Serial/UTAG | - | - | - | - | - | V3.00001 | V2.00 | X | - |
| V850 | V850E.SJC3-L | µPD70F3804 | 48K8 | X | ✓ | ✓ | ✓ | - | - | - | ✓ | ✓ | ✓ | Serial/UTAG | - | - | - | - | - | V3.00001 | V2.00 | X | - |
| V850 | V850E.SJC3-L | µPD70F3804 | 48K8 | X | ✓ | ✓ | ✓ | - | - | - | ✓ | ✓ | ✓ | Serial/UTAG | - | - | - | - | - | V3.00001 | V2.00 | X | - |
| V850 | V850E.SJC3-L | µPD70F3804 | 48K8 | X | ✓ | ✓ | ✓ | - | - | - | ✓ | ✓ | ✓ | Serial/UTAG | - | - | - | - | - | V3.00001 | V2.00 | X | - |
| V850 | V850E.SJC3-L | µPD70F3804 | 48K8 | X | ✓ | ✓ | ✓ | - | - | - | ✓ | ✓ | ✓ | Serial/UTAG | - | - | - | - | - | V3.00001 | V2.00 | X | - |
| V850 | V850E.SJC3-L | µPD70F3804 | 48K8 | X | ✓ | ✓ | ✓ | - | - | - | ✓ | ✓ | ✓ | Serial/UTAG | - | - | - | - | - | V3.00001 | V2.00 | X | - |
| V850 | V850E.SJC3-L | µPD70F3805 | 48K8 | X | ✓ | ✓ | ✓ | - | - | - | ✓ | ✓ | ✓ | Serial/UTAG | - | - | - | - | - | V3.00001 | V2.00 | X | - |
| V850 | V850E.SJE3-L | µPD70F3806 | 64GB | X | ✓ | ✓ | ✓ | - | - | - | ✓ | ✓ | ✓ | Serial/UTAG | - | - | - | - | - | V3.00001 | V2.00 | X | - |
| V850 | V850E.SJE3-L | µPD70F3807 | 64GB | X | ✓ | ✓ | ✓ | - | - | - | ✓ | ✓ | ✓ | Serial/UTAG | - | - | - | - | - | V3.00001 | V2.00 | X | - |
| V850 | V850E.SJE3-L | µPD70F3808 | 64GB | X | ✓ | ✓ | ✓ | - | - | - | ✓ | ✓ | ✓ | Serial/UTAG | - | - | - | - | - | V3.00001 | V2.00 | X | - |
| V850 | V850E.SJE3-L | µPD70F3840 | 64GB | X | ✓ | ✓ | ✓ | - | - | - | ✓ | ✓ | ✓ | Serial/UTAG | - | - | - | - | - | V3.00001 | V2.00 | X | - |
| V850 | V850E.SJF3-L | µPD70F3735 | 80GC | X | ✓ | ✓ | ✓ | - | - | - | ✓ | ✓ | ✓ | Serial/UTAG | - | - | - | - | - | V3.00001 | V2.00 | X | - |
| V850 | V850E.SJF3-L | µPD70F3735 | 80GC | X | ✓ | ✓ | ✓ | - | - | - | ✓ | ✓ | ✓ | Serial/UTAG | - | - | - | - | - | V3.00001 | V2.00 | X | - |
| V850 | V850E.SJF3-L | µPD70F3736 | 80GC | X | ✓ | ✓ | ✓ | - | - | - | ✓ | ✓ | ✓ | Serial/UTAG | - | - | - | - | - | V3.00001 | V2.00 | X | - |
| V850 | V850E.SJF3-L | µPD70F3736 | 80GC | X | ✓ | ✓ | ✓ | - | - | - | ✓ | ✓ | ✓ | Serial/UTAG | - | - | - | - | - | V3.00001 | V2.00 | X | - |
| V850 | V850E.SJG3-L | µPD70F3737 | 100GF | X | ✓ | ✓ | ✓ | - | - | - | ✓ | ✓ | ✓ | Serial/UTAG | - | - | | | | | | | |

| Microcontroller | Nickname/Group | Product Name | Pins, Package type | Supported functions | | | | | | | | | | | | | Device Specification Name | Default Link Directive Information (V8K) | | | | Device Information File version | | | Additional information |
|-----------------|----------------|--------------|--------------------|---------------------|----------------|------------------|-------------|-------------|-------------|----------------------|-----------|----------|---------|----------------------------|-------------------------|-------------------------|---------------------------|---------------------------------------------|-------------------|-------------------------|-------|---------------------------------|-----|--|------------------------|
| | | | | Smart Configurator | Code Generator | Pin Configurator | Compiler | | | Emulator | | | E2 Life | Program Downloader (or HW) | ROM Start address, Size | RAM Start address, Size | | Other Memory Area Name, Start address, Size | *.ProductList.xml | *.78k or *.800 or *.DVF | *.dtd | | | | |
| | | | | | | | CA Compiler | CX Compiler | CC Compiler | IECUBE, IE850, IE850 | MINICUBE2 | MINICUBE | | | | | | | | | | E1 E20 | E2 | | |
| V850 | V850E2,FK4-G | µPD70F3592 | 176GM | X | X | X | ✓ | ✓ | ✓ | ✓ | ✓ | ✓ | ✓ | ✓ | X | R3592 | --- | --- | --- | V3.00001 | V1.22 | X | --- | | |
| V850 | V850E2,FK4 | µPD70F3555 | 176GM | X | X | X | ✓ | ✓ | ✓ | ✓ | ✓ | ✓ | ✓ | ✓ | X | R3555 | --- | --- | --- | V3.00001 | V1.22 | X | --- | | |
| V850 | V850E2,FK4 | µPD70F3556 | 176GM | X | X | X | ✓ | ✓ | ✓ | ✓ | ✓ | ✓ | ✓ | ✓ | X | R3556 | --- | --- | --- | V3.00001 | V1.22 | X | --- | | |
| V850 | V850E2,FK4 | µPD70F3557 | 176GM | X | X | X | ✓ | ✓ | ✓ | ✓ | ✓ | ✓ | ✓ | ✓ | X | R3557 | --- | --- | --- | V3.00001 | V1.22 | X | --- | | |
| V850 | V850E2,FK4 | µPD70F3558 | 176GM | X | X | X | ✓ | ✓ | ✓ | ✓ | ✓ | ✓ | ✓ | ✓ | X | R3558 | --- | --- | --- | V3.00001 | V1.22 | X | --- | | |
| V850 | V850E2,FK4 | µPD70F4007 | 176GM | X | X | X | ✓ | ✓ | ✓ | ✓ | ✓ | ✓ | ✓ | ✓ | X | R4007 | --- | --- | --- | V3.00001 | V1.22 | X | --- | | |
| V850 | V850E2,FK4 | µPD70F4008 | 176GM | X | X | X | ✓ | ✓ | ✓ | ✓ | ✓ | ✓ | ✓ | ✓ | X | R4008 | --- | --- | --- | V3.00001 | V1.22 | X | --- | | |
| V850 | V850E2,FK4 | µPD70F4009 | 176GM | X | X | X | ✓ | ✓ | ✓ | ✓ | ✓ | ✓ | ✓ | ✓ | X | R4009 | --- | --- | --- | V3.00001 | V1.22 | X | --- | | |
| V850 | V850E2,FK4 | µPD70F4010 | 176GM | X | X | X | ✓ | ✓ | ✓ | ✓ | ✓ | ✓ | ✓ | ✓ | X | R4010 | --- | --- | --- | V3.00001 | V1.22 | X | --- | | |
| V850 | V850E2,FG4 | 100GC | X | X | X | ✓ | ✓ | ✓ | ✓ | ✓ | ✓ | ✓ | ✓ | ✓ | X | R3548 | --- | --- | --- | V3.00001 | V1.22 | X | --- | | |
| V850 | V850E2,FG4 | µPD70F3549 | 100GC | X | X | X | ✓ | ✓ | ✓ | ✓ | ✓ | ✓ | ✓ | ✓ | X | R3549 | --- | --- | --- | V3.00001 | V1.22 | X | --- | | |
| V850 | V850E2,FG4 | µPD70F3550 | 100GC | X | X | X | ✓ | ✓ | ✓ | ✓ | ✓ | ✓ | ✓ | ✓ | X | R3550 | --- | --- | --- | V3.00001 | V1.22 | X | --- | | |
| V850 | V850E2,FG4 | µPD70F4000 | 100GC | X | X | X | ✓ | ✓ | ✓ | ✓ | ✓ | ✓ | ✓ | ✓ | X | R4000 | --- | --- | --- | V3.00001 | V1.22 | X | --- | | |
| V850 | V850E2,FG4 | µPD70F4001 | 100GC | X | X | X | ✓ | ✓ | ✓ | ✓ | ✓ | ✓ | ✓ | ✓ | X | R4001 | --- | --- | --- | V3.00001 | V1.22 | X | --- | | |
| V850 | V850E2,FG4 | µPD70F4002 | 100GC | X | X | X | ✓ | ✓ | ✓ | ✓ | ✓ | ✓ | ✓ | ✓ | X | R4002 | --- | --- | --- | V3.00001 | V1.22 | X | --- | | |
| V850 | V850E2,FJ4 | µPD70F3551 | 144GJ | X | X | X | ✓ | ✓ | ✓ | ✓ | ✓ | ✓ | ✓ | ✓ | X | R3551 | --- | --- | --- | V3.00001 | V1.22 | X | --- | | |
| V850 | V850E2,FJ4 | µPD70F3552 | 144GJ | X | X | X | ✓ | ✓ | ✓ | ✓ | ✓ | ✓ | ✓ | ✓ | X | R3552 | --- | --- | --- | V3.00001 | V1.22 | X | --- | | |
| V850 | V850E2,FJ4 | µPD70F3553 | 144GJ | X | X | X | ✓ | ✓ | ✓ | ✓ | ✓ | ✓ | ✓ | ✓ | X | R3553 | --- | --- | --- | V3.00001 | V1.22 | X | --- | | |
| V850 | V850E2,FJ4 | µPD70F3554 | 144GJ | X | X | X | ✓ | ✓ | ✓ | ✓ | ✓ | ✓ | ✓ | ✓ | X | R3554 | --- | --- | --- | V3.00001 | V1.22 | X | --- | | |
| V850 | V850E2,FJ4 | µPD70F4003 | 144GJ | X | X | X | ✓ | ✓ | ✓ | ✓ | ✓ | ✓ | ✓ | ✓ | X | R4003 | --- | --- | --- | V3.00001 | V1.22 | X | --- | | |
| V850 | V850E2,FJ4 | µPD70F4004 | 144GJ | X | X | X | ✓ | ✓ | ✓ | ✓ | ✓ | ✓ | ✓ | ✓ | X | R4004 | --- | --- | --- | V3.00001 | V1.22 | X | --- | | |
| V850 | V850E2,FJ4 | µPD70F4005 | 144GJ | X | X | X | ✓ | ✓ | ✓ | ✓ | ✓ | ✓ | ✓ | ✓ | X | R4005 | --- | --- | --- | V3.00001 | V1.22 | X | --- | | |
| V850 | V850E2,FJ4 | µPD70F4006 | 144GJ | X | X | X | ✓ | ✓ | ✓ | ✓ | ✓ | ✓ | ✓ | ✓ | X | R4006 | --- | --- | --- | V3.00001 | V1.22 | X | --- | | |
| V850 | V850E2,FL4 | µPD70F3559 | 208GD,272F1 | X | X | X | ✓ | ✓ | ✓ | ✓ | ✓ | ✓ | ✓ | ✓ | X | R3559 | --- | --- | --- | V3.00001 | V1.22 | X | --- | | |
| V850 | V850E2,FL4 | µPD70F3560 | 208GD,272F1 | X | X | X | ✓ | ✓ | ✓ | ✓ | ✓ | ✓ | ✓ | ✓ | X | R3560 | --- | --- | --- | V3.00001 | V1.22 | X | --- | | |
| V850 | V850E2,FL4 | µPD70F4011 | 208GD,272F1 | X | X | X | ✓ | ✓ | ✓ | ✓ | ✓ | ✓ | ✓ | ✓ | X | R4011 | --- | --- | --- | V3.00001 | V1.22 | X | --- | | |
| V850 | V850E2,FL4 | µPD70F4012 | 208GD,272F1 | X | X | X | ✓ | ✓ | ✓ | ✓ | ✓ | ✓ | ✓ | ✓ | X | R4012 | --- | --- | --- | V3.00001 | V1.22 | X | --- | | |
| V850 | V850E2,DJ4 | µPD70F3522 | 144GJ | X | X | X | ✓ | ✓ | ✓ | ✓ | ✓ | ✓ | ✓ | ✓ | X | R3522 | --- | --- | --- | V3.00001 | V1.00 | X | --- | | |
| V850 | V850E2,DJ4 | µPD70F3523 | 144GJ | X | X | X | ✓ | ✓ | ✓ | ✓ | ✓ | ✓ | ✓ | ✓ | X | R3523 | --- | --- | --- | V3.00001 | V1.00 | X | --- | | |
| V850 | V850E2,DJ4 | µPD70F3524 | 144GJ | X | X | X | ✓ | ✓ | ✓ | ✓ | ✓ | ✓ | ✓ | ✓ | X | R3524 | --- | --- | --- | V3.00001 | V1.00 | X | --- | | |
| V850 | V850E2,DJ4 | µPD70F3525 | 144GJ | X | X | X | ✓ | ✓ | ✓ | ✓ | ✓ | ✓ | ✓ | ✓ | X | R3525 | --- | --- | --- | V3.00001 | V1.00 | X | --- | | |
| V850 | V850E2,DJ4 | µPD70F3526 | 144GJ | X | X | X | ✓ | ✓ | ✓ | ✓ | ✓ | ✓ | ✓ | ✓ | X | R3526 | --- | --- | --- | V3.00001 | V1.00 | X | --- | | |
| V850 | V850E2,DK4-H | µPD70F3529 | 176GM | X | X | X | ✓ | ✓ | ✓ | ✓ | ✓ | ✓ | ✓ | ✓ | X | R3529 | --- | --- | --- | V3.00001 | V1.00 | X | --- | | |
| V850 | V850E2,DP4-H | µPD70F3532 | 1352P1 | X | X | X | ✓ | ✓ | ✓ | ✓ | ✓ | ✓ | ✓ | ✓ | X | R3532 | --- | --- | --- | V3.00001 | V1.00 | X | --- | | |
| V850 | V850E2,DP4-H | µPD70F3535 | T408F1 | X | X | X | ✓ | ✓ | ✓ | ✓ | ✓ | ✓ | ✓ | ✓ | X | R3535 | --- | --- | --- | V3.00001 | V1.00 | X | --- | | |
| V850 | V850E2,DP4-H | µPD70F3536 | T408F1 | X | X | X | ✓ | ✓ | ✓ | ✓ | ✓ | ✓ | ✓ | ✓ | X | R3536 | --- | --- | --- | V3.00001 | V1.00 | X | --- | | |
| V850 | V850E2,DP4-H | µPD70F3537 | T408F1 | X | X | X | ✓ | ✓ | ✓ | ✓ | ✓ | ✓ | ✓ | ✓ | X | R3537 | --- | --- | --- | V3.00001 | V1.00 | X | --- | | |
| V850 | V850E2,FE4-L | µPD70F3570 | 64GB | X | X | X | ✓ | ✓ | ✓ | ✓ | ✓ | ✓ | ✓ | ✓ | X | R3570 | --- | --- | --- | V3.00001 | V1.13 | X | --- | | |
| V850 | V850E2,FE4-L | µPD70F3571 | 64GB | X | X | X | ✓ | ✓ | ✓ | ✓ | ✓ | ✓ | ✓ | ✓ | X | R3571 | --- | --- | --- | V3.00001 | V1.13 | X | --- | | |
| V850 | V850E2,FE4-L | µPD70F3572 | 64GB | X | X | X | ✓ | ✓ | ✓ | ✓ | ✓ | ✓ | ✓ | ✓ | X | R3572 | --- | --- | --- | V3.00001 | V1.13 | X | --- | | |
| V850 | V850E2,FF4-L | µPD70F3573 | 80GK | X | X | X | ✓ | ✓ | ✓ | ✓ | ✓ | ✓ | ✓ | ✓ | X | R3573 | --- | --- | --- | V3.00001 | V1.13 | X | --- | | |
| V850 | V850E2,FF4-L | µPD70F3574 | 80GK | X | X | X | ✓ | ✓ | ✓ | ✓ | ✓ | ✓ | ✓ | ✓ | X | R3574 | --- | --- | --- | V3.00001 | V1.13 | X | --- | | |
| V850 | V850E2,FF4-L | µPD70F3575 | 80GK | X | X | X | ✓ | ✓ | ✓ | ✓ | ✓ | ✓ | ✓ | ✓ | X | R3575 | --- | --- | --- | V3.00001 | V1.13 | X | --- | | |
| V850 | V850E2,FG4-L | µPD70F3576 | 100GC | X | X | X | ✓ | ✓ | ✓ | ✓ | ✓ | ✓ | ✓ | ✓ | X | R3576 | --- | --- | --- | V3.00001 | V1.13 | X | --- | | |
| V850 | V850E2,FG4-L | µPD70F3577 | 100GC | X | X | X | ✓ | ✓ | ✓ | ✓ | ✓ | ✓ | ✓ | ✓ | X | R3577 | --- | --- | --- | V3.00001 | V1.13 | X | --- | | |
| V850 | V850E2,FG4-L | µPD70F3578 | 100GC | X | X | X | ✓ | ✓ | ✓ | ✓ | ✓ | ✓ | ✓ | ✓ | X | R3578 | --- | --- | --- | V3.00001 | V1.13 | X | --- | | |
| V850 | V850E2,FG4-L | µPD70F3579 | 100GC | X | X | X | ✓ | ✓ | ✓ | ✓ | ✓ | ✓ | ✓ | ✓ | X | R3579 | --- | --- | --- | V3.00001 | V1.13 | X | --- | | |
| V850 | V850E2,FG4-L | µPD70F3580 | 100GC | X | X | X | ✓ | ✓ | ✓ | ✓ | ✓ | ✓ | ✓ | ✓ | X | R3580 | --- | --- | --- | V3.00001 | V1.13 | X | --- | | |
| V850 | V850E2,FJ4-L | µPD70F3582 | 144GJ | X | X | X | ✓ | ✓ | ✓ | ✓ | ✓ | ✓ | ✓ | ✓ | X | R3582 | --- | --- | --- | V3.00001 | V1.13 | X | --- | | |
| V850 | V850E2,FJ4-L | µPD70F3583 | 144GJ | X | X | X | ✓ | ✓ | ✓ | ✓ | ✓ | ✓ | ✓ | ✓ | X | R3583 | --- | --- | --- | V3.00001 | V1.13 | X | --- | | |
| V850 | V850E2,FJ4-L | µPD70F3584 | 144GJ | X | X | X | ✓ | ✓ | ✓ | ✓ | ✓ | ✓ | ✓ | ✓ | X | R3584 | --- | --- | --- | V3.00001 | V1.13 | X | --- | | |
| V850 | V850E2,FJ4-L | µPD70F3585 | 144GJ | X | X | X | ✓ | ✓ | ✓ | ✓ | ✓ | ✓ | ✓ | ✓ | X | R3585 | --- | --- | --- | V3.00001 | V1.13 | X | --- | | |
| V850 | V850E2,FF4-G | µPD70F4177 | 80GK | X | X | X | ✓ | ✓ | ✓ | ✓ | ✓ | ✓ | ✓ | ✓ | X | R4177 | --- | --- | --- | V3.00001 | V1.02 | X | --- | | |
| V850 | V850E2,FF4-G | µPD70F4178 | 80GK | X | X | X | ✓ | ✓ | ✓ | ✓ | ✓ | ✓ | ✓ | ✓ | X | R4178 | --- | --- | --- | V3.00001 | V1.02 | X | --- | | |
| V850 | V850E2,FG4-G | µPD70F4179 | 100GC | X | X | X | ✓ | ✓ | ✓ | ✓ | ✓ | ✓ | ✓ | ✓ | X | R4179 | --- | --- | --- | V3.00001 | V1.02 | X | --- | | |
| V850 | V850E2,FG4-G | µPD70F4180 | 100GC | X | X | X | ✓ | ✓ | ✓ | ✓ | ✓ | ✓ | ✓ | ✓ | X | R4180 | --- | --- | --- | V3.00001 | V1.02 | X | --- | | |
| V850 | V850E2,PG4-S | 100GC | X | X | X | ✓ | ✓ | ✓ | ✓ | ✓ | ✓ | ✓ | ✓ | ✓ | X | R4159 | --- | --- | --- | V3.00001 | V1.00 | X | --- | | |
| V850 | V850E2,SK4-H | µPD70F4017 | 176GM | X | X | X | ✓ | ✓ | ✓ | ✓ | ✓ | ✓ | ✓ | ✓ | X | R4017 | --- | --- | --- | V3.00001 | V2.00 | X | --- | | |
| V850 | V850E2,SK4-H | µPD70F4018 | 176GM | X | X | X | ✓ | ✓ | ✓ | ✓ | ✓ | ✓ | ✓ | ✓ | X | R4018 | --- | --- | --- | V3.00001 | V2.00 | X | --- | | |

| Microcontroller | Nickname/Group | Product Name | Pins, Package type | Smart Configurator | Code Generator | Pin Configurator | Supported functions | | | | | | | | | | Emulator | Device Specification Name | ROM Start address, Size | RAM Start address, Size | Other Memory Area Name, Start address, Size | Device Information File version | | | Additional information |
|-----------------|----------------|-------------------|--------------------|--------------------|----------------|------------------|---------------------|-------------|-------------|----------------------|-----------|----------|--------|-----|---------|-----------------------------------------------------|----------|---------------------------|-------------------------|-------------------------|---------------------------------------------|------------------------------------------|------------------------------------------|-------|------------------------|
| | | | | | | | CA Compiler | CX Compiler | CC Compiler | IECUBE, IE850, IE850 | MINICUBE2 | MINICUBE | E1 E20 | E2 | E2 Lite | Preprocessor (Generate Device supporting I/O files) | | | | | | Default Link Directive Information (I9K) | | | |
| | | | | | | | | | | | | | | | | | | | | | | *.Productlist.xml | *.78k or *.800 or *.DVF | *.dfl | |
| RX | RX71M | RSF571MLC4L | PTLG0100JA-A | ✓ | ✓ | ✓ | ✓ | ✓ | ✓ | ✓ | ✓ | ✓ | ✓ | ✓ | ✓ | ✓ | ✓ | ✓ | ✓ | V3.040000 | --- | 1.00 | --- | | |
| RX | RX71M | RSF571MLC4K | PTLG0145KA-A | ✓ | ✓ | ✓ | ✓ | ✓ | ✓ | ✓ | ✓ | ✓ | ✓ | ✓ | ✓ | ✓ | ✓ | ✓ | ✓ | V3.040000 | --- | 1.00 | --- | | |
| RX | RX71M | RSF571MLD4BG | PLBG0176GA-A | ✓ | ✓ | ✓ | ✓ | ✓ | ✓ | ✓ | ✓ | ✓ | ✓ | ✓ | ✓ | ✓ | ✓ | ✓ | ✓ | V3.040000 | --- | 1.00 | --- | | |
| RX | RX71M | RSF571MLD4FB | PLQP0144KA-B | ✓ | ✓ | ✓ | ✓ | ✓ | ✓ | ✓ | ✓ | ✓ | ✓ | ✓ | ✓ | ✓ | ✓ | ✓ | ✓ | V3.040000 | --- | 1.00 | --- | | |
| RX | RX71M | RSF571MLD4FC | PLQP0176KB-A | ✓ | ✓ | ✓ | ✓ | ✓ | ✓ | ✓ | ✓ | ✓ | ✓ | ✓ | ✓ | ✓ | ✓ | ✓ | ✓ | V3.040000 | --- | 1.00 | --- | | |
| RX | RX71M | RSF571MLD4FP | PLQP0100KB-A | ✓ | ✓ | ✓ | ✓ | ✓ | ✓ | ✓ | ✓ | ✓ | ✓ | ✓ | ✓ | ✓ | ✓ | ✓ | ✓ | V3.040000 | --- | 1.00 | --- | | |
| RX | RX71M | RSF571MLD4LC | PTLG0177KA-A | ✓ | ✓ | ✓ | ✓ | ✓ | ✓ | ✓ | ✓ | ✓ | ✓ | ✓ | ✓ | ✓ | ✓ | ✓ | ✓ | V3.040000 | --- | 1.00 | --- | | |
| RX | RX71M | RSF571MLD4LJ | PTLG0100JA-A | ✓ | ✓ | ✓ | ✓ | ✓ | ✓ | ✓ | ✓ | ✓ | ✓ | ✓ | ✓ | ✓ | ✓ | ✓ | ✓ | V3.040000 | --- | 1.00 | --- | | |
| RX | RX71M | RSF571MLD4LK | PTLG0145KA-A | ✓ | ✓ | ✓ | ✓ | ✓ | ✓ | ✓ | ✓ | ✓ | ✓ | ✓ | ✓ | ✓ | ✓ | ✓ | ✓ | V3.040000 | --- | 1.00 | --- | | |
| RX | RX71M | RU0E5671MLDM8xx | --- | X | X | X | --- | --- | --- | --- | --- | --- | --- | --- | --- | --- | --- | --- | --- | V3.040000 | --- | 1.00 | --- | | |
| RX | RX72T | RSF572TFAxFP | PLQP0100KB-B | ✓ | ✓ | X | X | --- | --- | --- | --- | --- | --- | --- | --- | --- | --- | --- | --- | V3.040000 | --- | 1.00 | --- | | |
| RX | RX72T | RSF572TFBxFP | PLQP0100KB-B | ✓ | ✓ | X | X | --- | --- | --- | --- | --- | --- | --- | --- | --- | --- | --- | --- | V3.040000 | --- | 1.00 | --- | | |
| RX | RX72T | RSF572TFCxPB | PLQP0144KA-B | ✓ | ✓ | X | X | --- | --- | --- | --- | --- | --- | --- | --- | --- | --- | --- | --- | V3.040000 | --- | 1.00 | --- | | |
| RX | RX72T | RSF572TFCxFP | PLQP0100KB-B | ✓ | ✓ | X | X | --- | --- | --- | --- | --- | --- | --- | --- | --- | --- | --- | --- | V3.040000 | --- | 1.00 | --- | | |
| RX | RX72T | RSF572TFExFP | PLQP0100KB-B | ✓ | ✓ | X | X | --- | --- | --- | --- | --- | --- | --- | --- | --- | --- | --- | --- | V3.040000 | --- | 1.00 | --- | | |
| RX | RX72T | RSF572TFExPB | PLQP0100KB-B | ✓ | ✓ | X | X | --- | --- | --- | --- | --- | --- | --- | --- | --- | --- | --- | --- | V3.040000 | --- | 1.00 | --- | | |
| RX | RX72T | RSF572TFGxPB | PLQP0144KA-B | ✓ | ✓ | X | X | --- | --- | --- | --- | --- | --- | --- | --- | --- | --- | --- | --- | V3.040000 | --- | 1.00 | --- | | |
| RX | RX72T | RSF572TFGxFP | PLQP0100KB-B | ✓ | ✓ | X | X | --- | --- | --- | --- | --- | --- | --- | --- | --- | --- | --- | --- | V3.040000 | --- | 1.00 | --- | | |
| RX | RX72T | RSF572TKxFP | PLQP0100KB-B | ✓ | ✓ | X | X | --- | --- | --- | --- | --- | --- | --- | --- | --- | --- | --- | --- | V3.040000 | --- | 1.00 | --- | | |
| RX | RX72T | RSF572TKxPB | PLQP0100KB-B | ✓ | ✓ | X | X | --- | --- | --- | --- | --- | --- | --- | --- | --- | --- | --- | --- | V3.040000 | --- | 1.00 | --- | | |
| RX | RX72T | RSF572TKCxPB | PLQP0144KA-B | ✓ | ✓ | X | X | --- | --- | --- | --- | --- | --- | --- | --- | --- | --- | --- | --- | V3.040000 | --- | 1.00 | --- | | |
| RX | RX72T | RSF572TKCxFP | PLQP0100KB-B | ✓ | ✓ | X | X | --- | --- | --- | --- | --- | --- | --- | --- | --- | --- | --- | --- | V3.040000 | --- | 1.00 | --- | | |
| RX | RX72T | RSF572TKExFP | PLQP0100KB-B | ✓ | ✓ | X | X | --- | --- | --- | --- | --- | --- | --- | --- | --- | --- | --- | --- | V3.040000 | --- | 1.00 | --- | | |
| RX | RX72T | RSF572TKExPB | PLQP0100KB-B | ✓ | ✓ | X | X | --- | --- | --- | --- | --- | --- | --- | --- | --- | --- | --- | --- | V3.040000 | --- | 1.00 | --- | | |
| RX | RX72T | RSF572TKGxFP | PLQP0144KA-B | ✓ | ✓ | X | X | --- | --- | --- | --- | --- | --- | --- | --- | --- | --- | --- | --- | V3.040000 | --- | 1.00 | --- | | |
| RX | RX72T | RSF572TKGxPB | PLQP0100KB-B | ✓ | ✓ | X | X | --- | --- | --- | --- | --- | --- | --- | --- | --- | --- | --- | --- | V3.040000 | --- | 1.00 | --- | | |
| RX | RX72M | RSF572MDx8B | PLBG0224GA-A | ✓ | ✓ | --- | --- | --- | --- | --- | --- | --- | --- | --- | --- | --- | --- | --- | --- | V3.040000 | --- | 1.00 | Check "CS+ for CC V8.02.00 Release Note" | | |
| RX | RX72M | RSF572MDx8B_DUAL | PLBG0224GA-A | ✓ | ✓ | --- | --- | --- | --- | --- | --- | --- | --- | --- | --- | --- | --- | --- | --- | V3.040000 | --- | 1.00C | Check "CS+ for CC V8.02.00 Release Note" | | |
| RX | RX72M | RSF572MDx8D | PLBG0224GA-A | ✓ | ✓ | --- | --- | --- | --- | --- | --- | --- | --- | --- | --- | --- | --- | --- | --- | V3.040000 | --- | 1.00C | Check "CS+ for CC V8.02.00 Release Note" | | |
| RX | RX72M | RSF572MDx8D_DUAL | PLBG0224GA-A | ✓ | ✓ | --- | --- | --- | --- | --- | --- | --- | --- | --- | --- | --- | --- | --- | --- | V3.040000 | --- | 1.00C | Check "CS+ for CC V8.02.00 Release Note" | | |
| RX | RX72M | RSF572MDx8G | PLBG0176GA-A | ✓ | ✓ | --- | --- | --- | --- | --- | --- | --- | --- | --- | --- | --- | --- | --- | --- | V3.040000 | --- | 1.00C | Check "CS+ for CC V8.02.00 Release Note" | | |
| RX | RX72M | RSF572MDx8G_DUAL | PLBG0176GA-A | ✓ | ✓ | --- | --- | --- | --- | --- | --- | --- | --- | --- | --- | --- | --- | --- | --- | V3.040000 | --- | 1.00C | Check "CS+ for CC V8.02.00 Release Note" | | |
| RX | RX72M | RSF572MDx8H | PLBG0224GA-A | ✓ | ✓ | --- | --- | --- | --- | --- | --- | --- | --- | --- | --- | --- | --- | --- | --- | V3.040000 | --- | 1.00C | Check "CS+ for CC V8.02.00 Release Note" | | |
| RX | RX72M | RSF572MDx8H_DUAL | PLBG0224GA-A | ✓ | ✓ | --- | --- | --- | --- | --- | --- | --- | --- | --- | --- | --- | --- | --- | --- | V3.040000 | --- | 1.00C | Check "CS+ for CC V8.02.00 Release Note" | | |
| RX | RX72M | RSF572MDx8J | PLBG0176GA-A | ✓ | ✓ | --- | --- | --- | --- | --- | --- | --- | --- | --- | --- | --- | --- | --- | --- | V3.040000 | --- | 1.00C | Check "CS+ for CC V8.02.00 Release Note" | | |
| RX | RX72M | RSF572MDx8J_DUAL | PLBG0176GA-A | ✓ | ✓ | --- | --- | --- | --- | --- | --- | --- | --- | --- | --- | --- | --- | --- | --- | V3.040000 | --- | 1.00C | Check "CS+ for CC V8.02.00 Release Note" | | |
| RX | RX72M | RSF572MDx8K | PLBG0176GA-A | ✓ | ✓ | --- | --- | --- | --- | --- | --- | --- | --- | --- | --- | --- | --- | --- | --- | V3.040000 | --- | 1.00C | Check "CS+ for CC V8.02.00 Release Note" | | |
| RX | RX72M | RSF572MDx8K_DUAL | PLBG0176GA-A | ✓ | ✓ | --- | --- | --- | --- | --- | --- | --- | --- | --- | --- | --- | --- | --- | --- | V3.040000 | --- | 1.00C | Check "CS+ for CC V8.02.00 Release Note" | | |
| RX | RX72M | RSF572MDx8L | PLBG0224GA-A | ✓ | ✓ | --- | --- | --- | --- | --- | --- | --- | --- | --- | --- | --- | --- | --- | --- | V3.040000 | --- | 1.00C | Check "CS+ for CC V8.02.00 Release Note" | | |
| RX | RX72M | RSF572MDx8L_DUAL | PLBG0224GA-A | ✓ | ✓ | --- | --- | --- | --- | --- | --- | --- | --- | --- | --- | --- | --- | --- | --- | V3.040000 | --- | 1.00C | Check "CS+ for CC V8.02.00 Release Note" | | |
| RX | RX72M | RSF572MDx8M | PLBG0176GA-A | ✓ | ✓ | --- | --- | --- | --- | --- | --- | --- | --- | --- | --- | --- | --- | --- | --- | V3.040000 | --- | 1.00C | Check "CS+ for CC V8.02.00 Release Note" | | |
| RX | RX72M | RSF572MDx8M_DUAL | PLBG0176GA-A | ✓ | ✓ | --- | --- | --- | --- | --- | --- | --- | --- | --- | --- | --- | --- | --- | --- | V3.040000 | --- | 1.00C | Check "CS+ for CC V8.02.00 Release Note" | | |
| RX | RX72M | RSF572MDx8N | PLBG0224GA-A | ✓ | ✓ | --- | --- | --- | --- | --- | --- | --- | --- | --- | --- | --- | --- | --- | --- | V3.040000 | --- | 1.00C | Check "CS+ for CC V8.02.00 Release Note" | | |
| RX | RX72M | RSF572MDx8N_DUAL | PLBG0224GA-A | ✓ | ✓ | --- | --- | --- | --- | --- | --- | --- | --- | --- | --- | --- | --- | --- | --- | V3.040000 | --- | 1.00C | Check "CS+ for CC V8.02.00 Release Note" | | |
| RX | RX72M | RSF572MNHx8B | PLBG0176GA-A | ✓ | ✓ | --- | --- | --- | --- | --- | --- | --- | --- | --- | --- | --- | --- | --- | --- | V3.040000 | --- | 1.00C | Check "CS+ for CC V8.02.00 Release Note" | | |
| RX | RX72M | RSF572MNHx8B_DUAL | PLBG0176GA-A | ✓ | ✓ | --- | --- | --- | --- | --- | --- | --- | --- | --- | --- | --- | --- | --- | --- | V3.040000 | --- | 1.00C | Check "CS+ for CC V8.02.00 Release Note" | | |
| RX | RX72M | RSF572MNHx8C | PLBG0176GA-A | ✓ | ✓ | --- | --- | --- | --- | --- | --- | --- | --- | --- | --- | --- | --- | --- | --- | V3.040000 | --- | 1.00C | Check "CS+ for CC V8.02.00 Release Note" | | |
| RX | RX72M | RSF572MNHx8C_DUAL | PLBG0176GA-A | ✓ | ✓ | --- | --- | --- | --- | --- | --- | --- | --- | --- | --- | --- | --- | --- | --- | V3.040000 | --- | 1.00C | Check "CS+ for CC V8.02.00 Release Note" | | |

Notice

1. Descriptions of circuits, software and other related information in this document are provided only to illustrate the operation of semiconductor products and application examples. You are fully responsible for the incorporation or any other use of the circuits, software, and information in the design of your product or system. Renesas Electronics disclaims any and all liability for any losses and damages incurred by you or third parties arising from the use of these circuits, software, or information.
2. Renesas Electronics hereby expressly disclaims any warranties against and liability for infringement or any other claims involving patents, copyrights, or other intellectual property rights of third parties, by or arising from the use of Renesas Electronics products or technical information described in this document, including but not limited to, the product data, drawings, charts, programs, algorithms, and application examples.
3. No license, express, implied or otherwise, is granted hereby under any patents, copyrights or other intellectual property rights of Renesas Electronics or others.
4. You shall not alter, modify, copy, or reverse engineer any Renesas Electronics product, whether in whole or in part. Renesas Electronics disclaims any and all liability for any losses or damages incurred by you or third parties arising from such alteration, modification, copying or reverse engineering.
5. Renesas Electronics products are classified according to the following two quality grades: "Standard" and "High Quality". The intended applications for each Renesas Electronics product depends on the product's quality grade, as indicated below.

"Standard": Computers; office equipment; communications equipment; test and measurement equipment; audio and visual equipment; home electronic appliances; machine tools; personal electronic equipment; industrial robots; etc.

"High Quality": Transportation equipment (automobiles, trains, ships, etc.); traffic control (traffic lights); large-scale communication equipment; key financial terminal systems; safety control equipment; etc.

Unless expressly designated as a high reliability product or a product for harsh environments in a Renesas Electronics data sheet or other Renesas Electronics document, Renesas Electronics products are not intended or authorized for use in products or systems that may pose a direct threat to human life or bodily injury (artificial life support devices or systems; surgical implantations; etc.), or may cause serious property damage (space system; undersea repeaters; nuclear power control systems; aircraft control systems; key plant systems; military equipment; etc.). Renesas Electronics disclaims any and all liability for any damages or losses incurred by you or any third parties arising from the use of any Renesas Electronics product that is inconsistent with any Renesas Electronics data sheet, user's manual or other Renesas Electronics document.

6. When using Renesas Electronics products, refer to the latest product information (data sheets, user's manuals, application notes, "General Notes for Handling and Using Semiconductor Devices" in the reliability handbook, etc.), and ensure that usage conditions are within the ranges specified by Renesas Electronics with respect to maximum ratings, operating power supply voltage range, heat dissipation characteristics, installation, etc. Renesas Electronics disclaims any and all liability for any malfunctions, failure or accident arising out of the use of Renesas Electronics products outside of such specified ranges.
7. Although Renesas Electronics endeavors to improve the quality and reliability of Renesas Electronics products, semiconductor products have specific characteristics, such as the occurrence of failure at a certain rate and malfunctions under certain use conditions. Unless designated as a high reliability product or a product for harsh environments in a Renesas Electronics data sheet or other Renesas Electronics document, Renesas Electronics products are not subject to radiation resistance design. You are responsible for implementing safety measures to guard against the possibility of bodily injury, injury or damage caused by fire, and/or danger to the public in the event of a failure or malfunction of Renesas Electronics products, such as safety design for hardware and software, including but not limited to redundancy, fire control and malfunction prevention, appropriate treatment for aging degradation or any other appropriate measures. Because the evaluation of microcomputer software alone is very difficult and impractical, you are responsible for evaluating the safety of the final products or systems manufactured by you.
8. Please contact a Renesas Electronics sales office for details as to environmental matters such as the environmental compatibility of each Renesas Electronics product. You are responsible for carefully and sufficiently investigating applicable laws and regulations that regulate the inclusion or use of controlled substances, including without limitation, the EU RoHS Directive, and using Renesas Electronics products in compliance with all these applicable laws and regulations. Renesas Electronics disclaims any and all liability for damages or losses occurring as a result of your noncompliance with applicable laws and regulations.
9. Renesas Electronics products and technologies shall not be used for or incorporated into any products or systems whose manufacture, use, or sale is prohibited under any applicable domestic or foreign laws or regulations. You shall comply with any applicable export control laws and regulations promulgated and administered by the governments of any countries asserting jurisdiction over the parties or transactions.
10. It is the responsibility of the buyer or distributor of Renesas Electronics products, or any other party who distributes, disposes of, or otherwise sells or transfers the product to a third party, to notify such third party in advance of the contents and conditions set forth in this document.
11. This document shall not be reprinted, reproduced or duplicated in any form, in whole or in part, without prior written consent of Renesas Electronics.
12. Please contact a Renesas Electronics sales office if you have any questions regarding the information contained in this document or Renesas Electronics products.

(Note1) "Renesas Electronics" as used in this document means Renesas Electronics Corporation and also includes its directly or indirectly controlled subsidiaries.

(Note2) "Renesas Electronics product(s)" means any product developed or manufactured by or for Renesas Electronics.

(Rev.4.0-1 November 2017)

Corporate Headquarters

TOYOSU FORESIA, 3-2-24 Toyosu,
Koto-ku, Tokyo 135-0061, Japan
www.renesas.com

Trademarks

Renesas and the Renesas logo are trademarks of Renesas Electronics Corporation. All trademarks and registered trademarks are the property of their respective owners.

Contact information

For further information on a product, technology, the most up-to-date version of a document, or your nearest sales office, please visit:
www.renesas.com/contact/.