

## **RZ/A2M Group**

### **Object Detection Sample Program Application Note**

---

#### **Introduction**

This document describes the contents of the object detection sample program.

#### **Target Device**

**RZ/A2M**

**Contents**

1. Overview.....	3
2. Operation Confirmation Conditions .....	4
3. Folder Structure.....	6
4. Sample Program.....	7
4.1 Input/Output Specification .....	8
4.1.1 Input Specification .....	8
4.1.2 Output Specification .....	8
4.2 Processing details .....	9
4.2.1 Simple ISP.....	9
4.2.2 Auto Exposure Correction (AE).....	9
4.2.3 Image Shrinking .....	12
4.2.4 Noise Reduction .....	13
4.2.5 Edge Detection.....	14
4.2.6 Contour Detection .....	15
4.2.7 Color Image Output.....	16
4.2.8 Color Image Cropping .....	17
4.2.9 Resize Cropped Image.....	18
4.3 Result Output.....	19
5. DRP Library .....	20
6. Reference Documents.....	21
Revision History .....	22

## 1. Overview

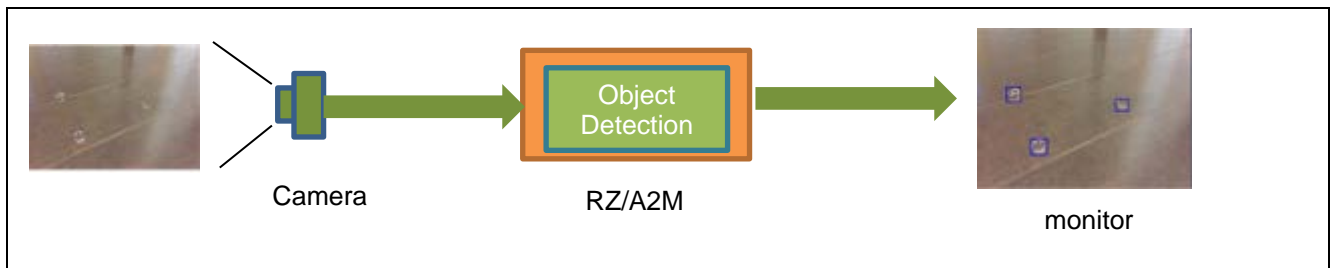
This application note explains the sample program which detects an object using the DRP (Dynamically Reconfigurable Processor) and the CPU.

This sample program can perform object detection by acquiring contour information from the image taken by a camera. By using the DRP in the image preprocessing stage to acquire contour information, even faster processing can be achieved compared to when processing is handled by the CPU. In addition, the result of the object detection process can be displayed on a monitor. The features of this sample program are shown below.

1. Robust object detection using the ISP\* which avoids influence from surrounding brightness conditions.
2. Realtime object detection using the DRP (Dynamically Reconfigurable Processor) mounted on the RZ/A2M.
3. Output object image conforms on the monitor display.

Note: This is the Simple ISP function of DRP Library. For details, refer to 4.2.1 Simple ISP.

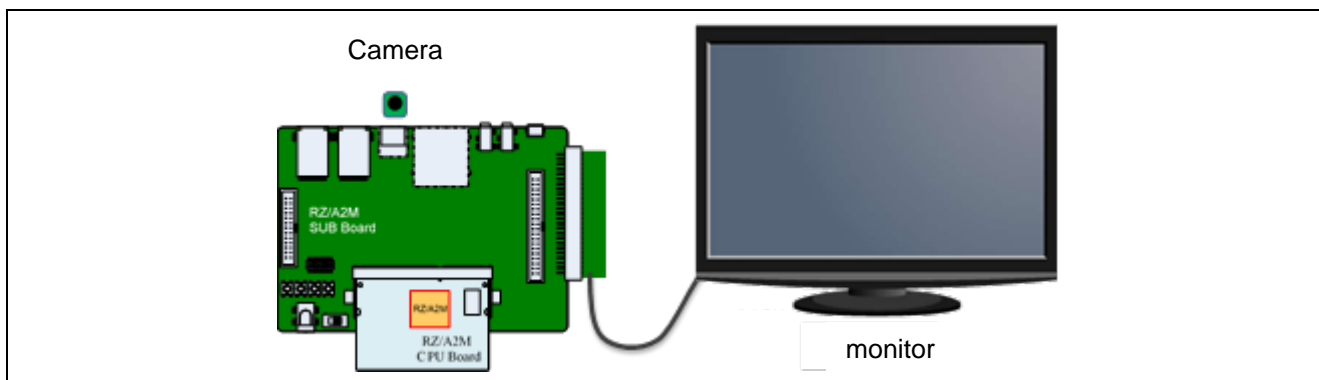
The following figure1.1 outlines the process of this sample program.



**figure1.1 System overview of object detection sample program**

## 2. Operation Confirmation Conditions

Figure 2.1 shows the environment for checking the operation of this sample program. Refer to the readme for DIP SW and jumper settings. For the display contents of the monitor, refer to Section 4.1.2 output specification.



**Figure 2.1 Operation check conditions**

For this sample program, the cameras supplied with the RZ / A2M Evaluation Board Kit can be used.

The sample code of this application has been verified using the following conditions.

**Table2.1 Operation Confirmation Conditions**

Item	Contents
Microcomputer	RZ/A2M
Operating frequency*1 [MHz]	CPU Clock (I $\phi$ ): 528MHz Image Processing Clock (G $\phi$ ): 264MHz Internal Bus Clock (B $\phi$ ): 132MHz Peripheral Clock 1 (P1 $\phi$ ): 66MHz Peripheral Clock 0 (P0 $\phi$ ): 33MHz QSPI0_SPCLK: 66MHz CKIO: 132MHz
Operating voltage	Power supply voltage (I/O): 3.3 V Power supply voltage (either 1.8V or 3.3V I/O (PVcc SPI)): 3.3V Power supply voltage (internal): 1.2 V
Integrated development environment	e2 studio v7.4.0
C compiler	GNU Arm Embedded Toolchain 6-2017-q2-update Compiler options (except directory path) Release: -mcpu=cortex-a9 -march=armv7-a -marm -mlittle-endian -mfloat-abi=hard -mfpu=neon -mno-unaligned-access -Os -ffunction-sections -fdata-sections -Wunused -Wuninitialized -Wall -Wextra -Wmissing-declarations -Wconversion -Wpointer-arith -Wpadded -Wshadow -Wlogical-op -Waggregate-return -Wfloat-equal -Wnull-dereference -Wmaybe-uninitialized -Wstack-usage=100 -fabi-version=0  Hardware Debug: -mcpu=cortex-a9 -march=armv7-a -marm -mlittle-endian -mfloat-abi=hard -mfpu=neon -mno-unaligned-access -Og -ffunction-sections -fdata-sections -Wunused -Wuninitialized -Wall -Wextra -Wmissing-declarations -Wconversion -Wpointer-arith -Wpadded -Wshadow -Wlogical-op -Waggregate-return -Wfloat-equal -Wnull-dereference -Wmaybe-uninitialized -g3 -Wstack-usage=100 -fabi-version=0
Operation mode	Boot mode 3 (Serial Flash boot 3.3V)
Board	RZ/A2M CPU board RTK7921053C00000BE RZ/A2M SUB board RTK79210XXB00000BE Display Output Board RTK79210XXB00010BE
Camera	Camera for Raspberry Pi using IMX 219 CMOS sensor
Monitor	VGA (640 x 480) monitor compatible with resolution
Device (functionality to be used on the board)	Serial flash memory allocated to SPI multi-I/O bus space (channel 0) Manufacturer: Macronix Inc. Model Name: MX25L51245GXD HyperRAM™ <sup>2</sup> (Connected to HyperRAM™ space) Manufacturer: Cypress Inc. Model Name: S27KS0641DPBH1020

Note: 1. The operating frequency used in clock mode 1 (Clock input of 24MHz from EXTAL pin).

2. HyperRAM™ is a registered trademark of Cypress Semiconductor Corporation.

### 3. Folder Structure

For the folder structure, refer to the release note for the RZ/A2M Group Simple Applications Package(R01AN4494).

The following open source software is bundled with this sample program.

**Table 3.1 List of open source software packaged**

<b>Item</b>	<b>Description</b>
FreeRTOS	It is open source software distributed under the MIT license. Regarding the MIT license, Please refer to <a href="https://opensource.org/licenses/mit-license.php">https://opensource.org/licenses/mit-license.php</a> . FreeRTOS is a real-time operation system kernel for embedded microcomputers. In this sample program, Kernel v10.0.0 is used.

### 4. Sample Program

This chapter describes the input/output specifications, the details of the contour detection process used in the sample program, and the resulting output.

The sample program consists of three parts: Simple ISP, contour detection, and result output. The following processing is performed on the image taken with the camera. For details of each process, refer to Chapters 4.2 and 4.3.

1. Simple ISP: Improves image quality, leading to improved object detection accuracy and prevention of false detection of objects due to noise.
2. Contour detection: Detects an object by detecting the contours in an input image.
3. Result output: The detection result is output to a monitor.

Figure 4.1 below is the system block diagram for the object detection sample program, and Figure 4.2 shows the object detection sample program flowchart.

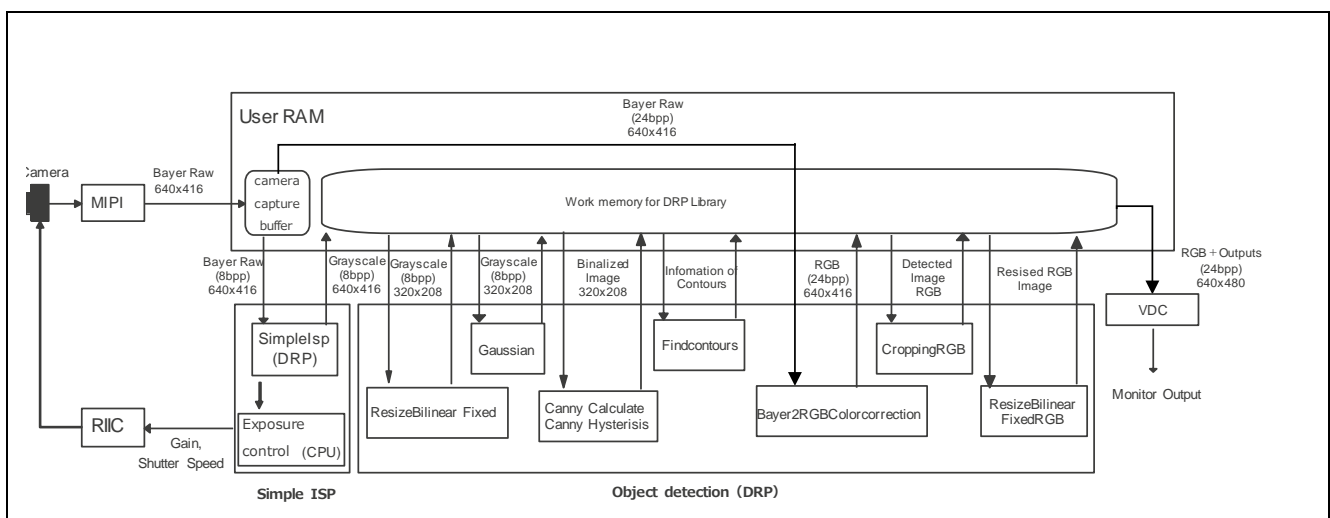


Figure 4.1 System block of object detection sample program

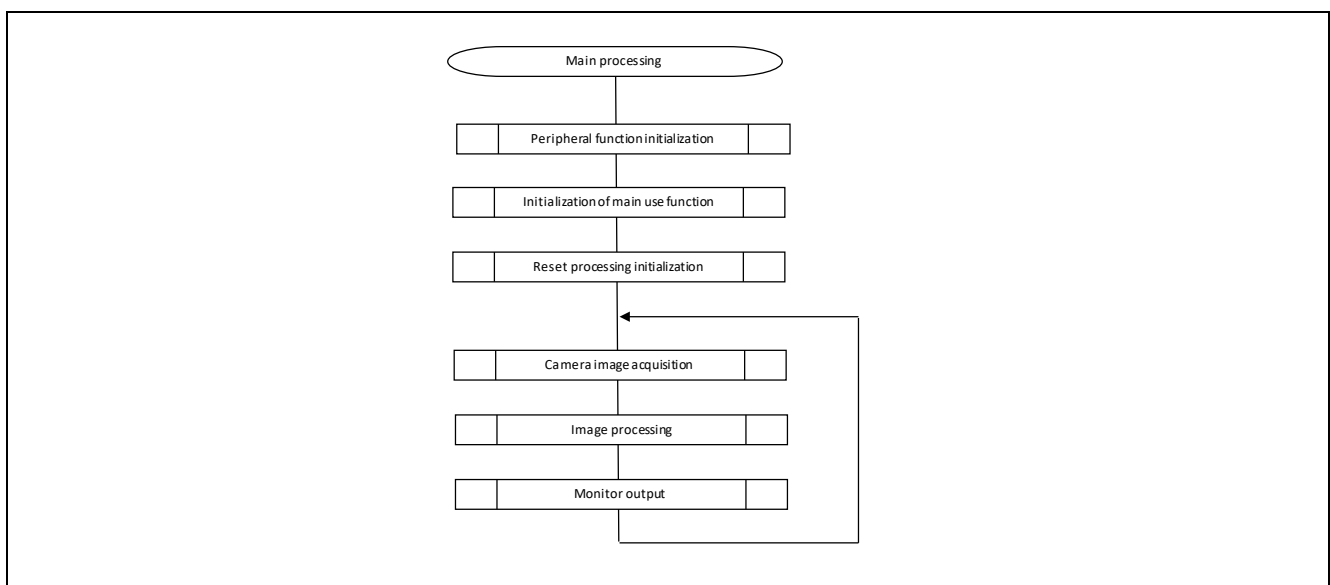


Figure 4.2 Flow chart of overall processing

## 4.1 Input/Output Specification

### 4.1.1 Input Specification

Table 4.1 shows the camera settings for this sample program.

**Table 4.1 Camera setting**

Input image format	Bayer format 8[bit per pixel]
Image capture size	640x416
Capture frame rate	Capture frame rate will fluctuate between 20 and 24 fps, by 4.2.2 Auto Exposure Correction (AE).

### 4.1.2 Output Specification

This sample program allows the user to view the results of the object detection process on the monitor. The detected object is resized to 64x 64 and displayed.

Table 4.2 shows the monitor output specifications used in this sample program.

**Table 4.2 Monitor output specification**

Image resolution	640x480
Image display frame rate	60 fps



## 4.2 Processing details

### 4.2.1 Simple ISP

Simple ISP controls camera exposure and suppresses noise for improved image quality and enhanced object detection accuracy.

The image data is converted to grayscale and output, because color information is not necessary for object detection.

This function uses Simple ISP of DRP Library. Please refer to "DRP Library user's manual (R01US0367)" for details of the Simple ISP.

The explanation for this section is continued in the sample program source code "r\_bcd\_main.c", onwards from the comment "/\* Function : Simple ISP(AE, Bayer to grayscale conversion, Noise reduction) \*/".

### 4.2.2 Auto Exposure Correction (AE)

Auto Exposure correction (AE) controls the exposure of the camera (shutter speed and camera gain) based on the color component accumulated value of the output from Simple ISP (Figure 4.3).

The camera's exposure corrects by the CPU. A flowchart describing the camera control process is shown in Figure 4.4, Figure 4.5, Figure 4.6 and Figure 4.7.

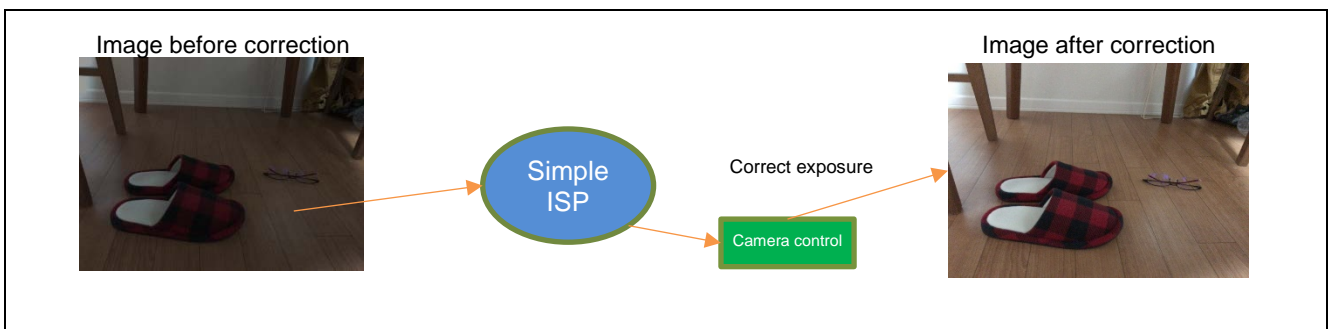


Figure 4.3 Lightness integrating process

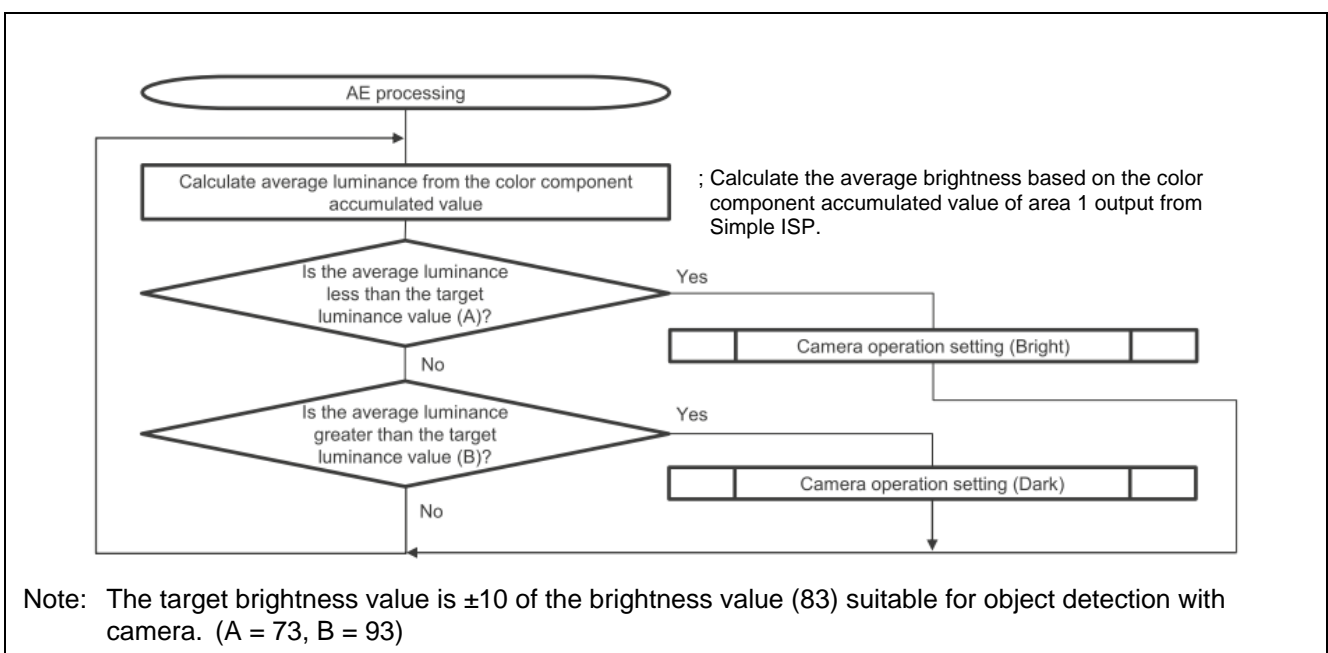


Figure 4.4 AE processing flow

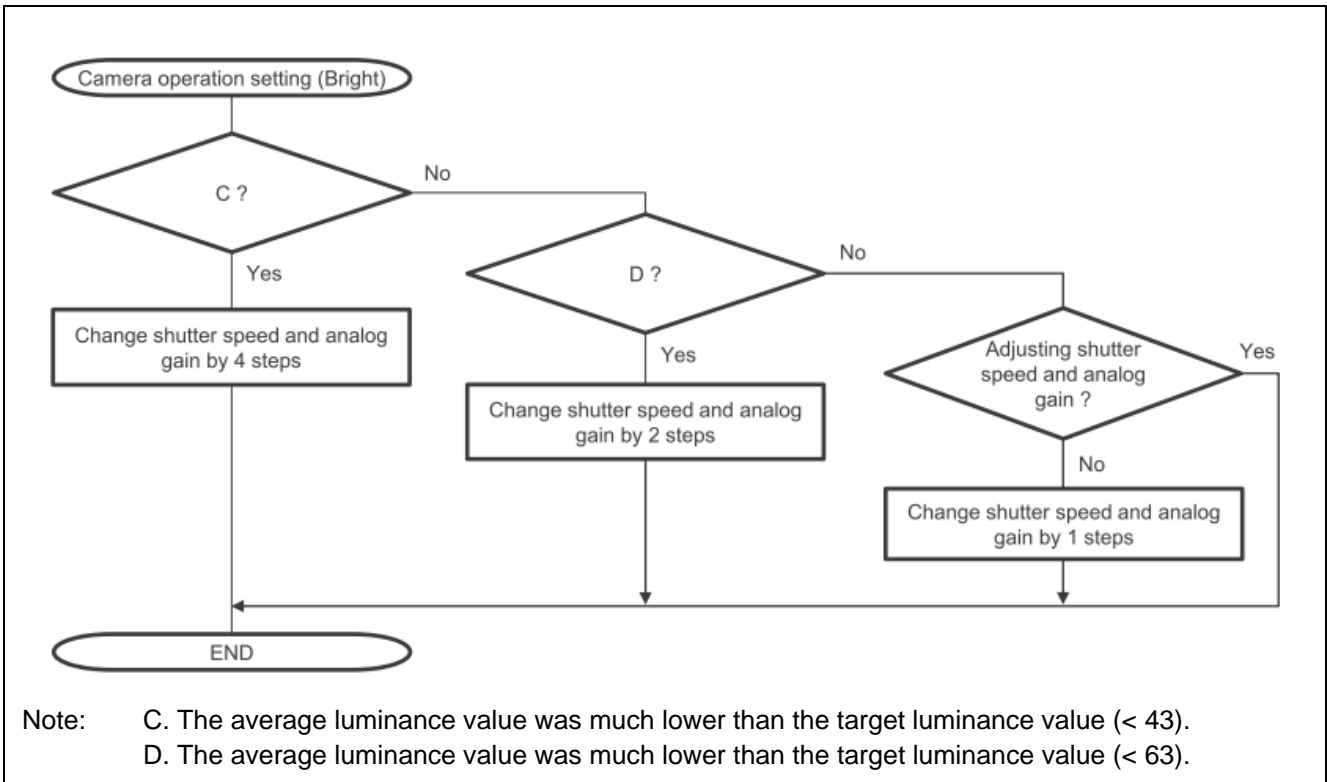


Figure 4.5 Camera operation setting (Bright) flowchart

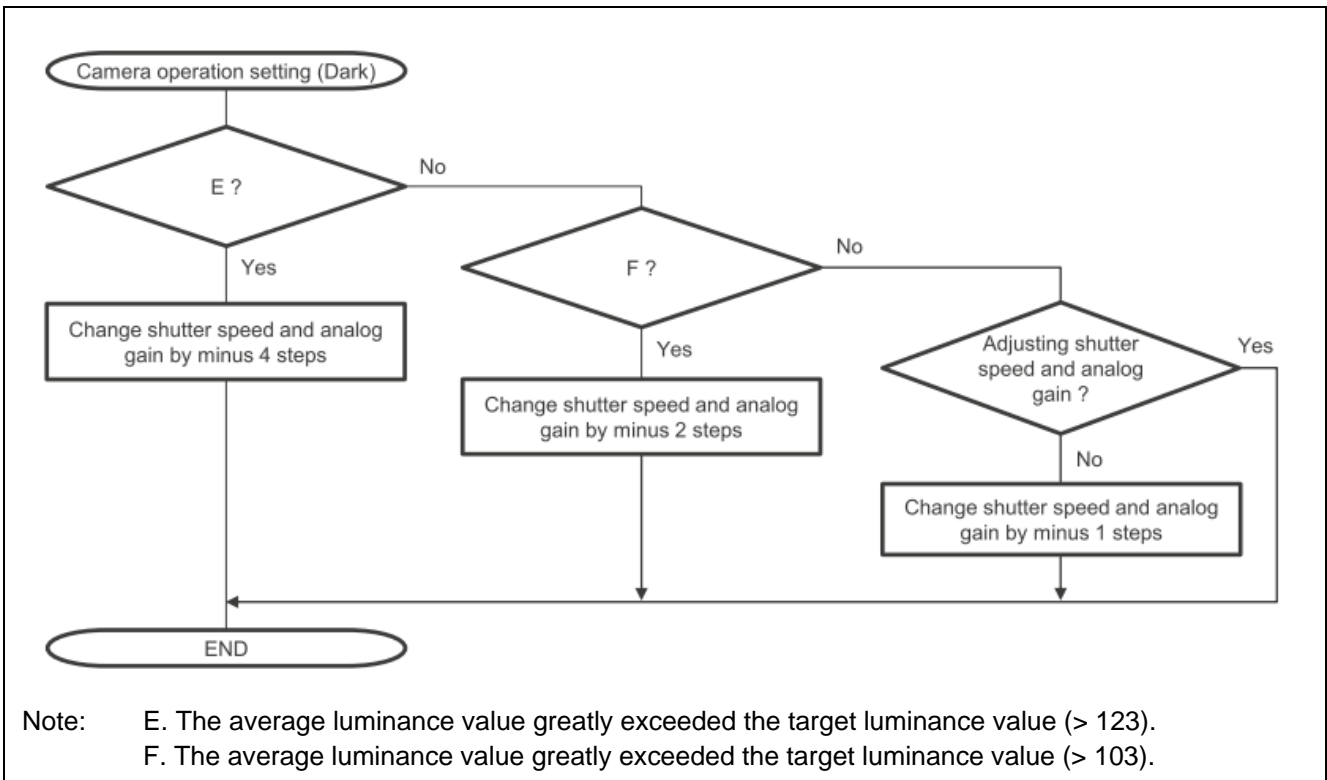
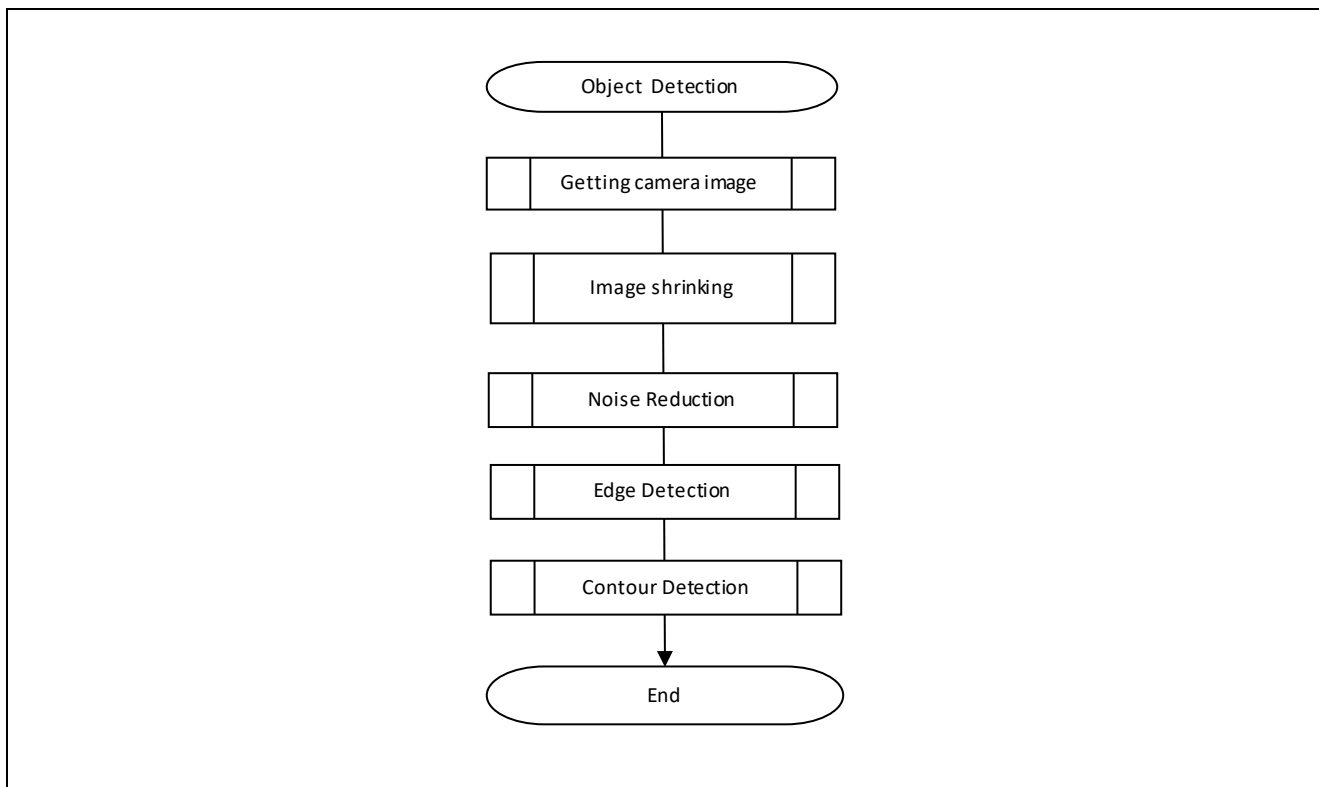


Figure 4.6 Camera operation setting (Dark) flowchart

Figure 4.7 shows the flow of object detection in this sample program, which makes use of the DRP for recognition processing



**Figure 4.7 Flow chart of object detection processing**

The details of each process of contour detection process are shown below.

### 4.2.3 Image Shrinking

Converts the Bayer format image obtained from the camera into a grayscale image using the Simple ISP. In addition, the generated grayscale image (640 x 416) is reduced and converted to a smaller image (320 x 208) by the Resize application process.

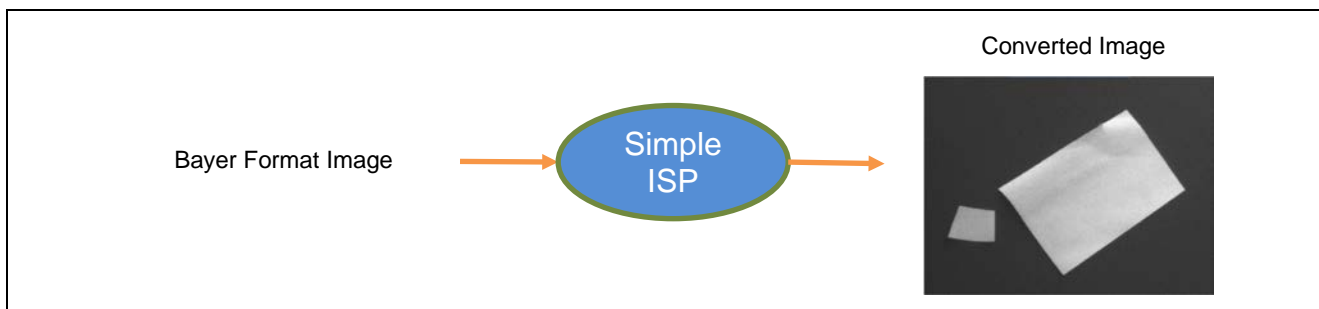


Figure 4.8 Simple ISP Process

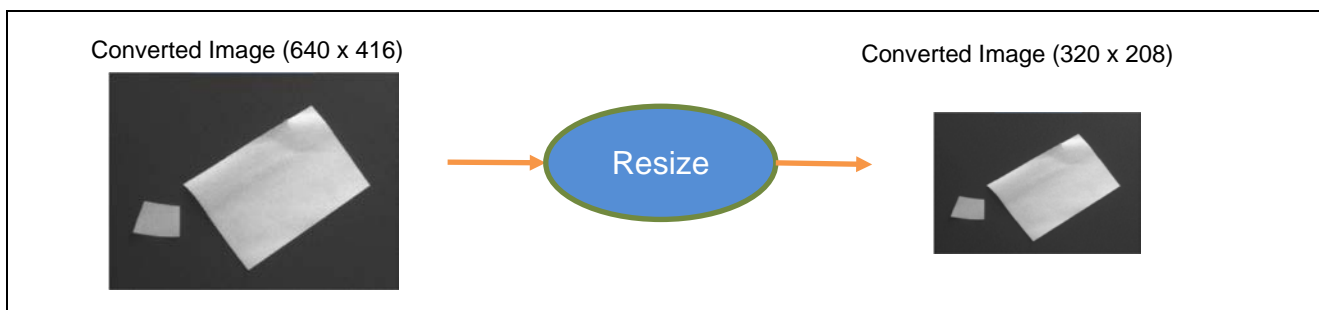


Figure 4.9 Image Resize Process

### 4.2.4 Noise Reduction

A Gaussian filter is used to remove noise from the reduced grayscale image.

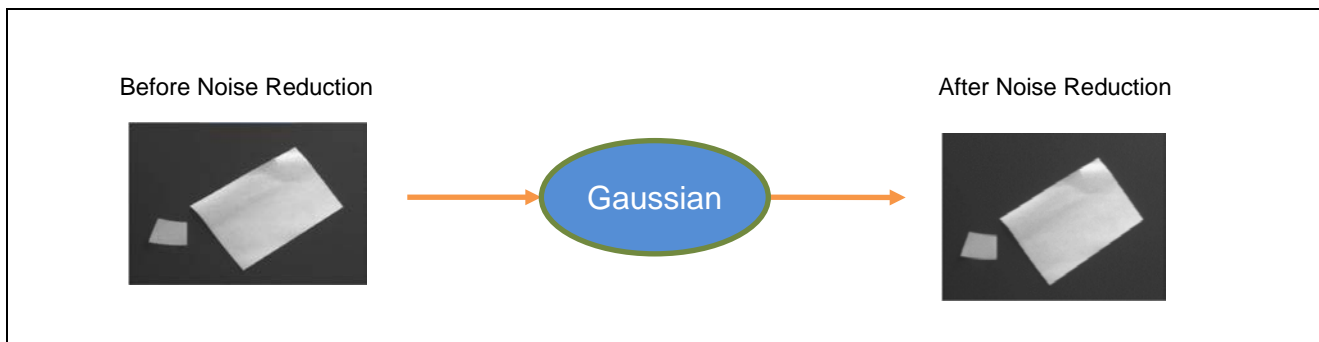


Figure 4.10 Noise Reduction Process (Gaussian)

### 4.2.5 Edge Detection

Performs edge detection processing using a Canny filter (Canny Calculate/Canny Hysteresis) on the grayscale image that has been subjected to noise removal processing.

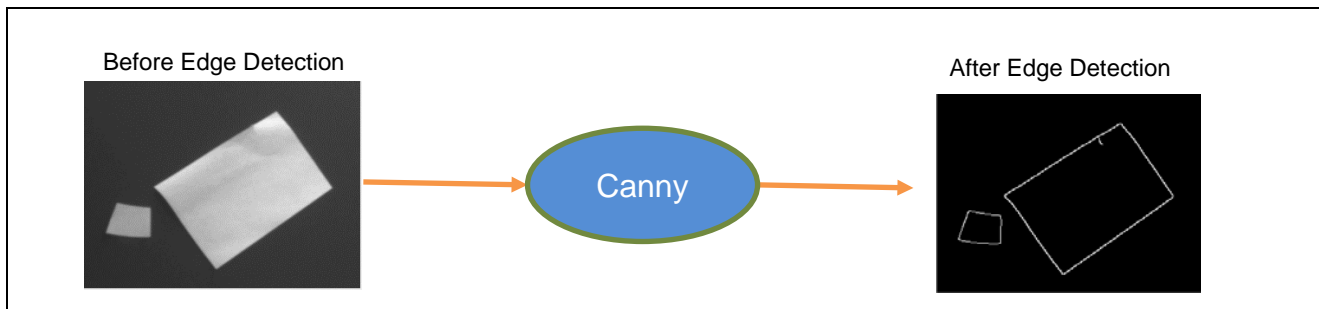
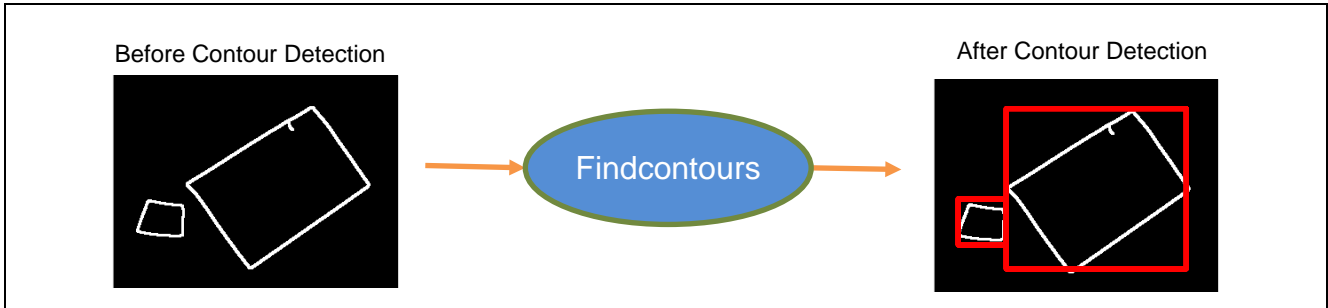


Figure 4.11 Edge Detection Process (Canny)

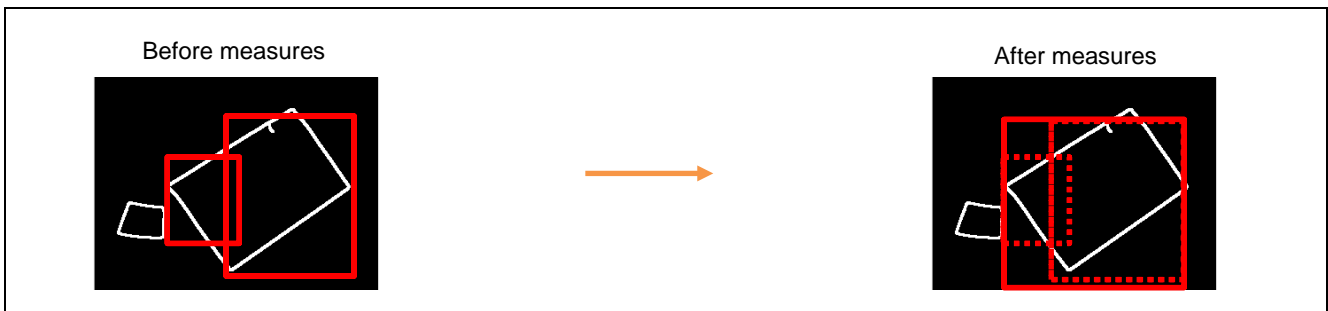
**4.2.6 Contour Detection**

Performs contour detection processing using the Findcontours application process on the image which was subjected to edge dilation. This process will output the circumscribed rectangle which is drawn around the detected contours. In this sample program, only the size of a certain range of rectangles is acquired. Refer to the "DRP Library User's Manual (R01US0367)" for details on the Findcontours process.



**Figure 4.12 Contour Detection Processing (Findcontours)**

If only a part of the object contour can be detected, multiple rectangles may be detected for one object. In that case, detected rectangles may overlap. Even in such a situation, it is possible to detect objects in a pseudo manner by including this measure as shown in Figure 4.13.



**Figure 4.13 Example of measures when the contour of the object could not be detected sufficiently**

### 4.2.7 Color Image Output

Uses the Bayer2RgbColorCorrection application process to generate a color image from the Bayer format image obtained from the camera. In this sample program, this color image is used to check the results on the monitor only (and is not used for object detection processing).

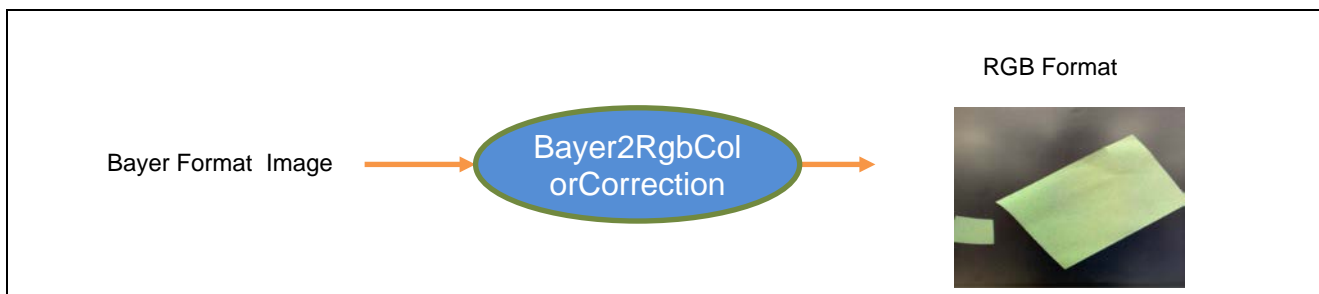


Figure 4.14 Color Image Output (Bayer2RgbColorCorrection)



### 4.2.8 Color Image Cropping

Cropping images including objects from a color image based on the contour information obtained by 4.2.6 Contour Detection.

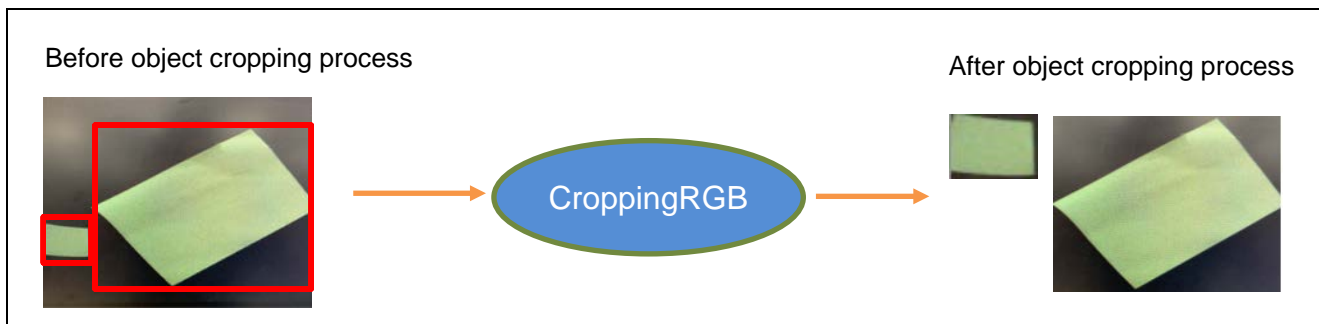


Figure 4.15 Color Image Cropping Process (CroppingRGB)

### 4.2.9 Resize Cropped Image

For each image generated by 4.2.8 Color Image Cropping, the image size is resized by `ResizeBilinearFixedRgb` processing of DRP Library. In this sample program, the size is 64 x 64.

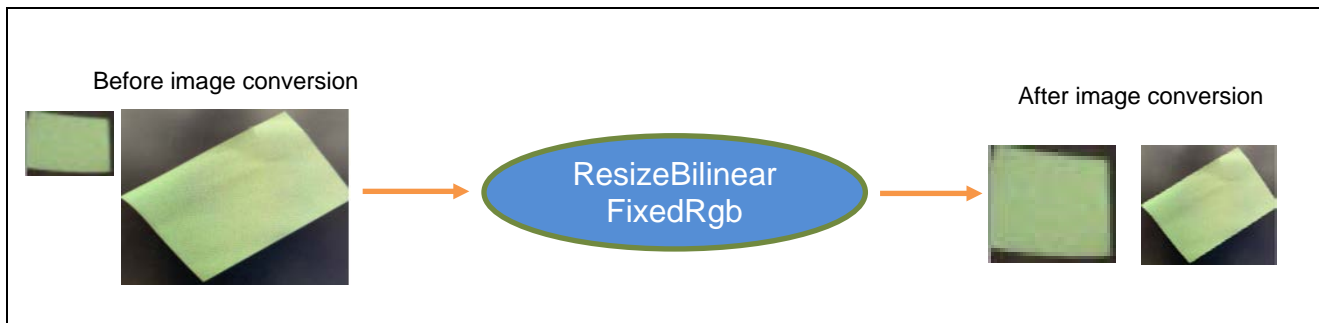
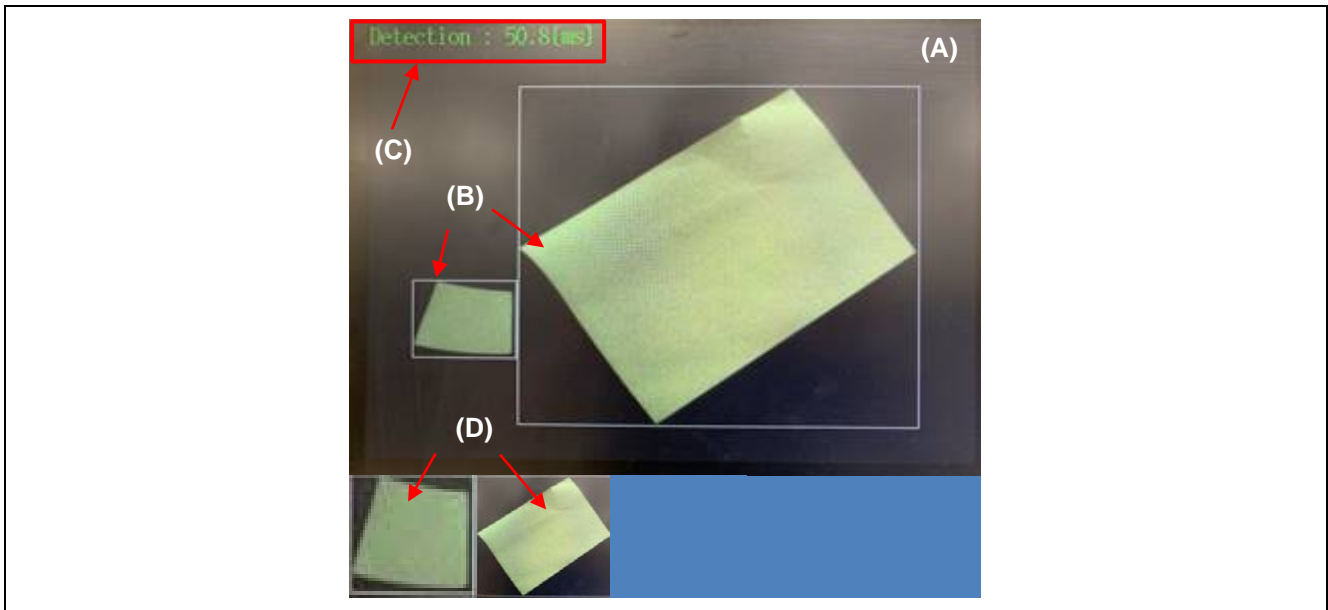


Figure 4.16 Resize Cropped Image Processing (`ResizeBilinearFixedRgb`)

### 4.3 Result Output

Figure 4.17 shows the monitor display contents. Table 4.3 lists the processes which are output to the display.



**Figure 4.17 Monitor Display Details**

- (A) Displays the image taken by the camera. The size of the image is 640 x 416 (color image).
- (B) If an object is detected, the object is enclosed in a rectangle.
- (C) Displays the time of each process required for object detection.
- (D) Displays to the monitor so that the result of Chapter 4.2.9 can be confirmed.

**Table 4.3 List of Process in Object Detection**

Process Name	Details	Section
Simple ISP	Simple ISP	4.2.1
Resize	Image Resize	4.2.3
Gaussian	Noise Reduction	4.2.4
Canny	Edge Detection	4.2.5
FindContours	Contour Detection	4.2.6
Bayer2RgbColorCorrection	Color Image Output	4.2.7
CroppingRGB	Color Image Cropping	4.2.8
ResizeBilinearFixedRgb	Color Image Resize	4.2.9

## 5. DRP Library

This sample program detects objects using the DRP Library shown in Table 5.1 .

Refer to the DRP Library user's manual (R01US0367) for the DRP Library specifications.

**Table 5.1 List of functions of the DRP Library to be used**

Category	Function name	usage	Section
Simple ISP	SimpleISP	Calculation of correction value used for AE, conversion to gray scale, noise removal.	4.2.1
Color conversion	Bayer2RGB color correction	Converts from RAW data acquired from CMOS to RGB and color correction.	4.2.7
Image filter	GaussianBlur	remove noise from the reduced grayscale image.	4.2.4
Image conversion	ResizeBilinear	Reducing the image.	4.2.3
	ResizeBilinear FixedRgb	Reducing the color image.	4.2.9
	CroppingRGB	Cropping the color image.	4.2.8
Feature detection	CannyCalculate	Performs edge detection using Canny method.	4.2.5
	CannyHysteresis		
	FindContours	Detects contours and calculates the circumscribed rectangle	4.2.6

## 6. Reference Documents

### Application note

**RZ/A2M** Group RZ/A2M Software Core Package (R01AN4775)

The latest version can be downloaded from the Renesas Electronics website.

### User's Manual: Software

**RZ/A2M** Group DRP Driver User's Manual (R01US0355)

The latest version can be downloaded from the Renesas Electronics website.

**RZ/A2M** Group DRP Library User's Manual (R01US0367)

The latest version can be downloaded from the Renesas Electronics website.

### User's Manual: Hardware

RZ/A2M Group User's Manual: Hardware

The latest version can be downloaded from the Renesas Electronics website.

RTK7921053C00000BE (RZ/A2M CPU board) User's Manual

The latest version can be downloaded from the Renesas Electronics website.

RTK79210XXB00000BE (RZ/A2M SUB board) User's Manual

The latest version can be downloaded from the Renesas Electronics website.

ARM Architecture Reference Manual ARMv7-A and ARMv7-R edition Issue C

The latest version can be downloaded from the ARM website.

ARM Cortex™-A9 Technical Reference Manual Revision: r4p1

The latest version can be downloaded from the ARM website.

ARM Generic Interrupt Controller Architecture Specification - Architecture version 2.0

The latest version can be downloaded from the ARM website.

ARM CoreLink™ Level 2 Cache Controller L2C-310 Technical Reference Manual Revision: r3p3

The latest version can be downloaded from the ARM website.

### Technical Update/Technical News

The latest information can be downloaded from the Renesas Electronics website.

### User's Manual: Development Tools

Integrated development environment e2studio User's Manual can be downloaded from the Renesas Electronics website.

The latest version can be downloaded from the Renesas Electronics website.

**Revision History**

Rev.	Date	Description	
		Page	Summary
1.0	May. 31, 2019	-	First edition issued
1.1	Sep. 30, 2019	7	Figure4.2 Flow chart of overall processing changed.
		17	Processing to display detected objects added(4.2.8, 4.2.9)
		18	Figure4.17 Monitor Display Details changed
1.12	Dec 17,2019	6	Change folder structure.
1.13	Sep 30, 2020	8	Table 4.1 Camera setting, updated description of capture frame rate.
		9, 10	Figure 4.4, Figure 4.5, Figure 4.6, updated.

## General Precautions in the Handling of Microprocessing Unit and Microcontroller Unit Products

The following usage notes are applicable to all Microprocessing unit and Microcontroller unit products from Renesas. For detailed usage notes on the products covered by this document, refer to the relevant sections of the document as well as any technical updates that have been issued for the products.

### 1. Precaution against Electrostatic Discharge (ESD)

A strong electrical field, when exposed to a CMOS device, can cause destruction of the gate oxide and ultimately degrade the device operation. Steps must be taken to stop the generation of static electricity as much as possible, and quickly dissipate it when it occurs. Environmental control must be adequate. When it is dry, a humidifier should be used. This is recommended to avoid using insulators that can easily build up static electricity.

Semiconductor devices must be stored and transported in an anti-static container, static shielding bag or conductive material. All test and measurement tools including work benches and floors must be grounded. The operator must also be grounded using a wrist strap. Semiconductor devices must not be touched with bare hands. Similar precautions must be taken for printed circuit boards with mounted semiconductor devices.

### 2. Processing at power-on

The state of the product is undefined at the time when power is supplied. The states of internal circuits in the LSI are indeterminate and the states of register settings and pins are undefined at the time when power is supplied. In a finished product where the reset signal is applied to the external reset pin, the states of pins are not guaranteed from the time when power is supplied until the reset process is completed. In a similar way, the states of pins in a product that is reset by an on-chip power-on reset function are not guaranteed from the time when power is supplied until the power reaches the level at which resetting is specified.

### 3. Input of signal during power-off state

Do not input signals or an I/O pull-up power supply while the device is powered off. The current injection that results from input of such a signal or I/O pull-up power supply may cause malfunction and the abnormal current that passes in the device at this time may cause degradation of internal elements. Follow the guideline for input signal during power-off state as described in your product documentation.

### 4. Handling of unused pins

Handle unused pins in accordance with the directions given under handling of unused pins in the manual. The input pins of CMOS products are generally in the high-impedance state. In operation with an unused pin in the open-circuit state, extra electromagnetic noise is induced in the vicinity of the LSI, an associated shoot-through current flows internally, and malfunctions occur due to the false recognition of the pin state as an input signal become possible.

### 5. Clock signals

After applying a reset, only release the reset line after the operating clock signal becomes stable. When switching the clock signal during program execution, wait until the target clock signal is stabilized. When the clock signal is generated with an external resonator or from an external oscillator during a reset, ensure that the reset line is only released after full stabilization of the clock signal. Additionally, when switching to a clock signal produced with an external resonator or by an external oscillator while program execution is in progress, wait until the target clock signal is stable.

### 6. Voltage application waveform at input pin

Waveform distortion due to input noise or a reflected wave may cause malfunction. If the input of the CMOS device stays in the area between  $V_{IL}$  (Max.) and  $V_{IH}$  (Min.) due to noise, for example, the device may malfunction. Take care to prevent chattering noise from entering the device when the input level is fixed, and also in the transition period when the input level passes through the area between  $V_{IL}$  (Max.) and  $V_{IH}$  (Min.).

### 7. Prohibition of access to reserved addresses

Access to reserved addresses is prohibited. The reserved addresses are provided for possible future expansion of functions. Do not access these addresses as the correct operation of the LSI is not guaranteed.

### 8. Differences between products

Before changing from one product to another, for example to a product with a different part number, confirm that the change will not lead to problems. The characteristics of a microprocessing unit or microcontroller unit products in the same group but having a different part number might differ in terms of internal memory capacity, layout pattern, and other factors, which can affect the ranges of electrical characteristics, such as characteristic values, operating margins, immunity to noise, and amount of radiated noise. When changing to a product with a different part number, implement a system-evaluation test for the given product.

## Notice

1. Descriptions of circuits, software and other related information in this document are provided only to illustrate the operation of semiconductor products and application examples. You are fully responsible for the incorporation or any other use of the circuits, software, and information in the design of your product or system. Renesas Electronics disclaims any and all liability for any losses and damages incurred by you or third parties arising from the use of these circuits, software, or information.
  2. Renesas Electronics hereby expressly disclaims any warranties against and liability for infringement or any other claims involving patents, copyrights, or other intellectual property rights of third parties, by or arising from the use of Renesas Electronics products or technical information described in this document, including but not limited to, the product data, drawings, charts, programs, algorithms, and application examples.
  3. No license, express, implied or otherwise, is granted hereby under any patents, copyrights or other intellectual property rights of Renesas Electronics or others.
  4. You shall not alter, modify, copy, or reverse engineer any Renesas Electronics product, whether in whole or in part. Renesas Electronics disclaims any and all liability for any losses or damages incurred by you or third parties arising from such alteration, modification, copying or reverse engineering.
  5. Renesas Electronics products are classified according to the following two quality grades: "Standard" and "High Quality". The intended applications for each Renesas Electronics product depends on the product's quality grade, as indicated below.
    - "Standard": Computers; office equipment; communications equipment; test and measurement equipment; audio and visual equipment; home electronic appliances; machine tools; personal electronic equipment; industrial robots; etc.
    - "High Quality": Transportation equipment (automobiles, trains, ships, etc.); traffic control (traffic lights); large-scale communication equipment; key financial terminal systems; safety control equipment; etc.
- Unless expressly designated as a high reliability product or a product for harsh environments in a Renesas Electronics data sheet or other Renesas Electronics document, Renesas Electronics products are not intended or authorized for use in products or systems that may pose a direct threat to human life or bodily injury (artificial life support devices or systems; surgical implantations; etc.), or may cause serious property damage (space system; undersea repeaters; nuclear power control systems; aircraft control systems; key plant systems; military equipment; etc.). Renesas Electronics disclaims any and all liability for any damages or losses incurred by you or any third parties arising from the use of any Renesas Electronics product that is inconsistent with any Renesas Electronics data sheet, user's manual or other Renesas Electronics document.
6. When using Renesas Electronics products, refer to the latest product information (data sheets, user's manuals, application notes, "General Notes for Handling and Using Semiconductor Devices" in the reliability handbook, etc.), and ensure that usage conditions are within the ranges specified by Renesas Electronics with respect to maximum ratings, operating power supply voltage range, heat dissipation characteristics, installation, etc. Renesas Electronics disclaims any and all liability for any malfunctions, failure or accident arising out of the use of Renesas Electronics products outside of such specified ranges.
  7. Although Renesas Electronics endeavors to improve the quality and reliability of Renesas Electronics products, semiconductor products have specific characteristics, such as the occurrence of failure at a certain rate and malfunctions under certain use conditions. Unless designated as a high reliability product or a product for harsh environments in a Renesas Electronics data sheet or other Renesas Electronics document, Renesas Electronics products are not subject to radiation resistance design. You are responsible for implementing safety measures to guard against the possibility of bodily injury, injury or damage caused by fire, and/or danger to the public in the event of a failure or malfunction of Renesas Electronics products, such as safety design for hardware and software, including but not limited to redundancy, fire control and malfunction prevention, appropriate treatment for aging degradation or any other appropriate measures. Because the evaluation of microcomputer software alone is very difficult and impractical, you are responsible for evaluating the safety of the final products or systems manufactured by you.
  8. Please contact a Renesas Electronics sales office for details as to environmental matters such as the environmental compatibility of each Renesas Electronics product. You are responsible for carefully and sufficiently investigating applicable laws and regulations that regulate the inclusion or use of controlled substances, including without limitation, the EU RoHS Directive, and using Renesas Electronics products in compliance with all these applicable laws and regulations. Renesas Electronics disclaims any and all liability for damages or losses occurring as a result of your noncompliance with applicable laws and regulations.
  9. Renesas Electronics products and technologies shall not be used for or incorporated into any products or systems whose manufacture, use, or sale is prohibited under any applicable domestic or foreign laws or regulations. You shall comply with any applicable export control laws and regulations promulgated and administered by the governments of any countries asserting jurisdiction over the parties or transactions.
  10. It is the responsibility of the buyer or distributor of Renesas Electronics products, or any other party who distributes, disposes of, or otherwise sells or transfers the product to a third party, to notify such third party in advance of the contents and conditions set forth in this document.
  11. This document shall not be reprinted, reproduced or duplicated in any form, in whole or in part, without prior written consent of Renesas Electronics.
  12. Please contact a Renesas Electronics sales office if you have any questions regarding the information contained in this document or Renesas Electronics products.

(Note1) "Renesas Electronics" as used in this document means Renesas Electronics Corporation and also includes its directly or indirectly controlled subsidiaries.

(Note2) "Renesas Electronics product(s)" means any product developed or manufactured by or for Renesas Electronics.

(Rev.4.0-1 November 2017)

## Corporate Headquarters

TOYOSU FORESIA, 3-2-24 Toyosu,  
Koto-ku, Tokyo 135-0061, Japan  
[www.renesas.com](http://www.renesas.com)

## Trademarks

Renesas and the Renesas logo are trademarks of Renesas Electronics Corporation. All trademarks and registered trademarks are the property of their respective owners.

## Contact information

For further information on a product, technology, the most up-to-date version of a document, or your nearest sales office, please visit:  
[www.renesas.com/contact/](http://www.renesas.com/contact/).