

---

M16C/5LD, M16C/56D, M16C/5L, M16C/56, M16C/5M,  
M16C/57, and M16C/6C Groups  
Method for Measuring the Pulse Width or Pulse Period When  
the 16-bit Base Timer Exceeds the Count Range in Timer S

---

R01AN1060EJ0100  
Rev. 1.00  
Apr. 27, 2012

## Abstract

This document describes a method for using the time measurement function of timer S in the M16C/5LD, M16C/56D, M16C/5L, M16C/56, M16C/5M, M16C/57, and M16C/6C Groups to measure the pulse width or pulse period that exceeds the 16-bit base timer count range.

## Products

MCUs: M16C/5LD, M16C/56D, M16C/5L, M16C/56, M16C/5M, M16C/57, and M16C/6C Groups

When using this application note with other Renesas MCUs, careful evaluation is recommended after making modifications to comply with the alternate MCU.

## Contents

1.	Specifications .....	3
2.	Operation Confirmation Conditions .....	5
3.	Reference Application Notes .....	5
4.	Peripheral Functions .....	6
4.1	Time Measurement Using the Time Measurement Function of Timer S .....	6
4.2	Notes on Timer S .....	7
4.2.1	Interrupt Request When Selecting the Time Measurement Function .....	7
5.	Hardware .....	8
5.1	Example of Hardware Configuration .....	8
5.2	Pin Used .....	8
6.	Software .....	9
6.1	Operation Overview .....	10
6.1.1	Processing When the IC/OC Interrupt 0 Occurs .....	11
6.1.2	Processing When the Base Timer Interrupt Occurs .....	12
6.1.3	Processing When the Base Timer Interrupt and IC/OC Interrupt 0 Occur Simultaneously ...	13
6.2	Variables .....	16
6.3	Functions .....	16
6.4	Function Specifications .....	17
6.5	Flowcharts .....	20
6.5.1	Main Processing .....	20
6.5.2	Peripheral Function Initialization .....	21
6.5.3	Base Timer Interrupt Handler .....	22
6.5.4	IC/OC Interrupt 0 Handler .....	22
6.5.5	Timer S Interrupt Common Processing .....	23
6.5.6	Overflow Counter Count Processing .....	24
6.5.7	Pulse Period Calculation .....	25
7.	Sample Code .....	26
8.	Reference Documents .....	26

## 1. Specifications

The pulse width or pulse period of input pulses is measured using the time measurement function of timer S.

When overflows occur between time measurement triggers, count the number of overflows. When a time measurement trigger is input, the pulse width or pulse period is calculated. While taking the number of overflows into account when calculating, the pulse width or pulse period that exceeds the 16-bit base timer count range can be measured.

This application note describes measuring a pulse period from one rising edge to the next rising edge.

When a signal is input as shown in Figure 1.1, the value obtained at the first rising edge of an input pulse on the INPC1\_0 pin is 'm', and the value obtained at second rising edge is 'n'. When the base timer overflows 'k' times from the first rising edge to the second rising edge, the calculation formula for the pulse period measured at the second rising edge is as follows:

$$\text{Pulse period} = (10000h \times k) + n - m$$

Table 1.1 lists the Pulse Measurement Specification and Table 1.2 lists the Peripheral Function and Its Usage. Figure 1.1 shows a Usage Example.

**Table 1.1 Pulse Measurement Specification**

Item	Description
Pin to input pulse	INPC1_0 (P2_0)
Time measurement trigger	Rising edge of an input pulse
Period for time measurement	From the rising edge of an input pulse to the rising edge of the next input pulse
Pulses for measuring time	Period between the rising edges of input pulses up to 16 seconds

**Table 1.2 Peripheral Function and Its Usage**

Peripheral Function	Usage
Timer S	Pulse period measurement

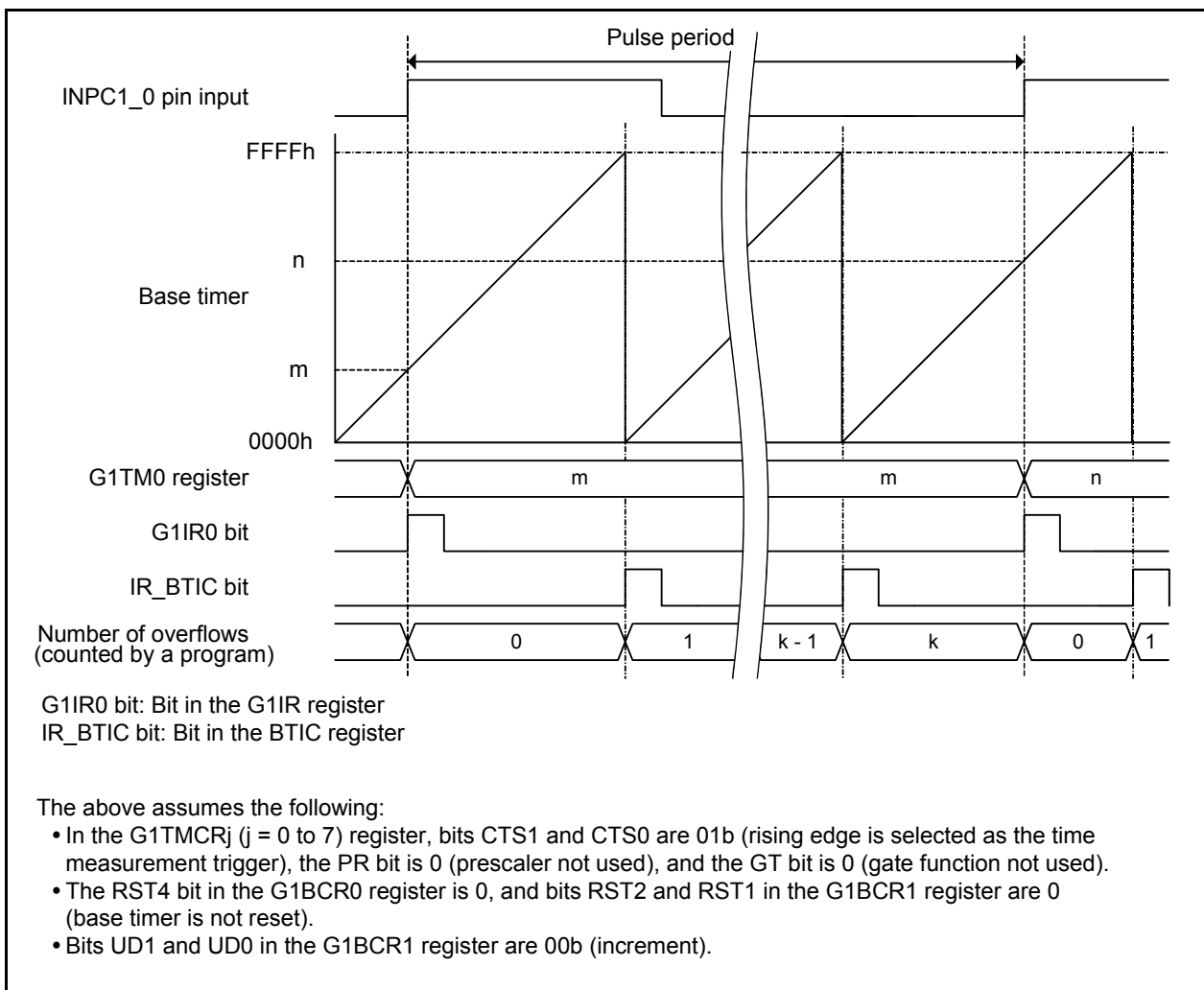


Figure 1.1 Usage Example

## 2. Operation Confirmation Conditions

The sample code accompanying this application note has been run and confirmed under the conditions below.

**Table 2.1 Operation Confirmation Conditions**

Item	Contents
MCU used	M16C/5LD Group
Operating frequencies	<ul style="list-style-type: none"> <li>• Main clock: 8 MHz</li> <li>• CPU clock: 32 MHz (PLL operation mode: divided by 2, multiplied by 8)</li> </ul>
Operating voltage	5.0 V (available between 2.7 to 5.0 V)
Integrated development environment	Renesas Electronics Corporation High-performance Embedded Workshop Version 4.09
C compiler	Renesas Electronics Corporation M16C Series/R8C Family C Compiler V.5.45 Release 01
	Compile options -c -finfo -dir "\$(CONFIGDIR)" (The default setting is used in the integrated development environment.)
Operating mode	Single-chip mode
Sample code version	Version 1.00

## 3. Reference Application Notes

Application notes associated with this application note are listed below. Refer to these application notes for additional information.

- M16C/5LD, M16C/56D, M16C/5L, M16C/56, M16C/5M, M16C/57, and M16C/6C Groups  
Pulse Width Measurement with Time Measurement Function of Timer S (R01AN0833EJ)
- M16C/5LD, M16C/56D, M16C/5L, M16C/56, M16C/5M, M16C/57, and M16C/6C Groups  
Time Measurement Function of Timer S with Gate Function (R01AN0834EJ)
- M16C/5LD, M16C/56D, M16C/5L, M16C/56, M16C/5M, M16C/57, and M16C/6C Groups  
Time Measurement Function of Timer S with Prescaler Function (R01AN0835EJ)

## 4. Peripheral Functions

This chapter provides supplementary information on time measurement using the time measurement function of timer S and notes on timer S. Refer to the User's Manual: Hardware for details.

### 4.1 Time Measurement Using the Time Measurement Function of Timer S

The base timer counts the count source with free-running operation. With the time measurement function, when a time measurement trigger is input to the INPC1<sub>j</sub> pin, the current base timer value is stored in the G1TM<sub>j</sub> register (j = 0 to 7). The value stored in the G1TM<sub>j</sub> register is not the time between time measurement triggers, but the value of the base timer. Therefore, to measure a pulse width or pulse period, calculate the difference between values obtained at two successive time measurement triggers.

In Figure 4.1, when the base timer value measured at the first time measurement trigger is 'a', and the value at the second time measurement trigger is 'b' (a measured value is stored in the G1TM<sub>j</sub> register), the pulse period is 'b - a'.

Pulse period = b - a

a: First value stored in the G1TM<sub>j</sub> register, b: Second value stored in the G1TM<sub>j</sub> register

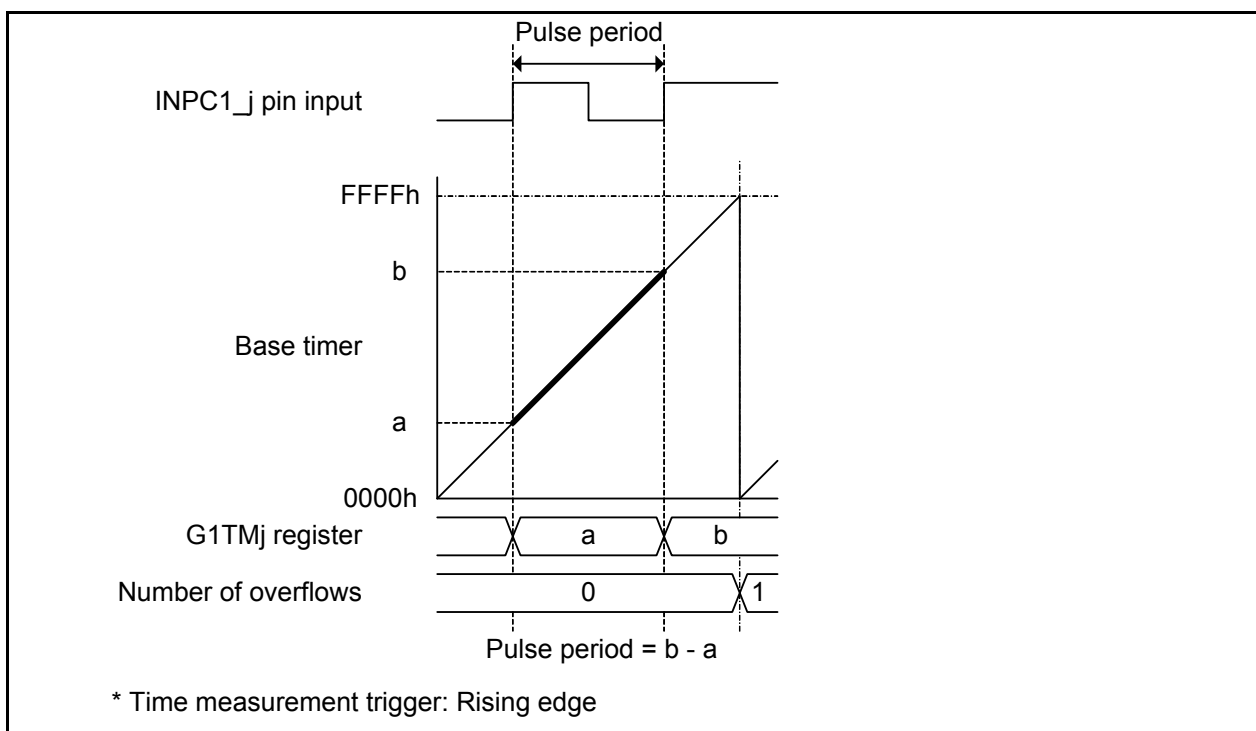


Figure 4.1 Example of Measuring a Pulse Period Using the Time Measurement Function

As shown in Figure 4.2, when an overflow occurs between the first and second time measurement triggers, the pulse period cannot be calculated with 'd - c'. For this case, 10000h needs to be added to the second obtained value as the number of overflows. By doing this, the second value can be considered as the value without the overflow.

Formula for calculating the pulse period with overflow is as follows:

$$\text{Pulse period} = (10000\text{h} \times \text{number of overflows}) + d - c$$

c: First value stored in the G1TMj register, d: Second value stored in the G1TMj register

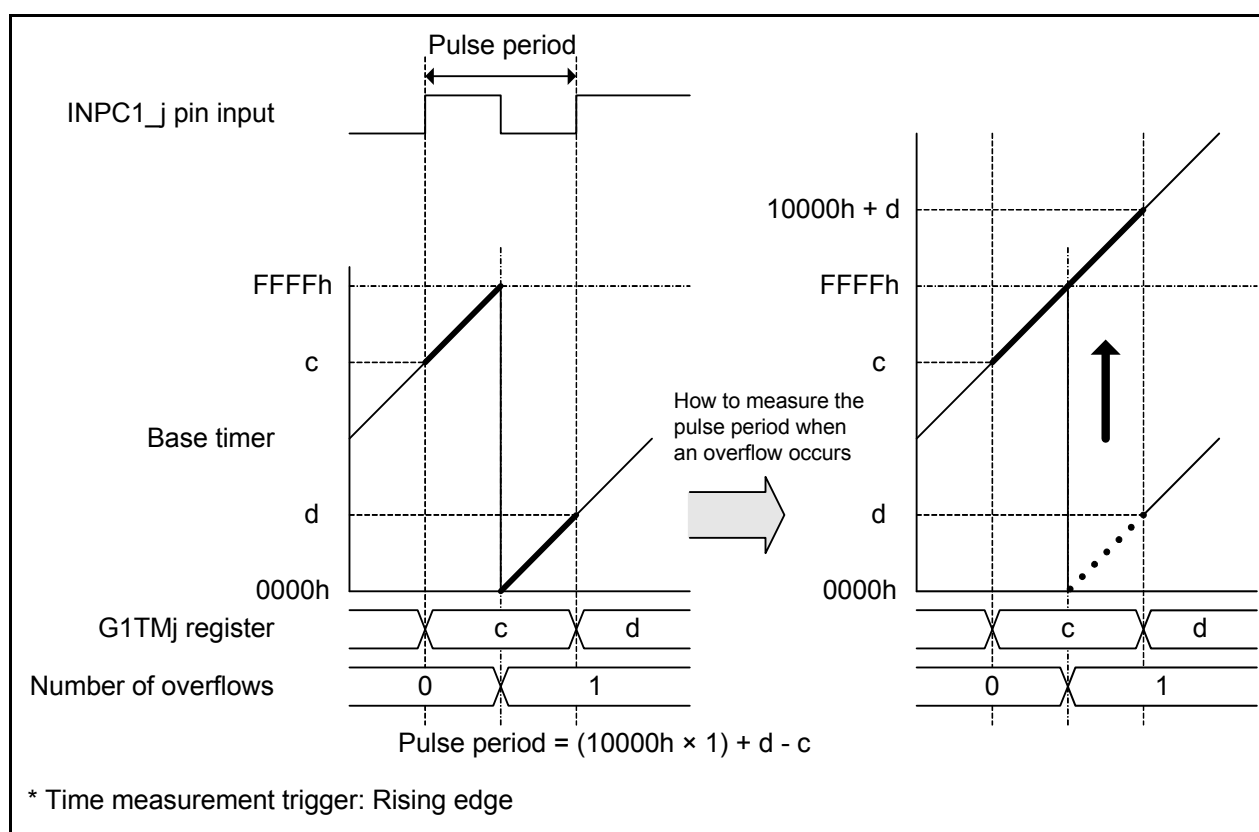


Figure 4.2 Example of Measuring a Pulse Period Using the Time Measurement Function when the Base Timer Overflows

## 4.2 Notes on Timer S

### 4.2.1 Interrupt Request When Selecting the Time Measurement Function

When the FSCj bit (j = 0 to 7) in the G1FS register is set to 1 (time measurement function selected), and the IFEj bit in the G1FE register is also set to 1, the G1IRj bit in the G1IR register, or the IR bits in registers ICOCiIC (i = 0, 1) or ICOCHjIC (j = 0 to 3) may become 1 (interrupt requested) after a maximum of two fBT1 cycles <sup>(1)</sup>.

When using IC/OC interrupt i or IC/OC channel j interrupt, set bits FSCj and IFEj to 1, then perform the following:

- (1) Wait for two or more fBT1 cycles <sup>(1)</sup>.
- (2) Set the IR bit in the ICOCiIC register and/or the ICOCHjIC register to 0.
- (3) Wait for three or more fBT1 cycles <sup>(1)</sup> after the time measurement function is selected. Set the G1IR register to 00h <sup>(2)</sup> after setting the IR bit in the ICOCiIC register to 0.

Notes:

1. When using the digital filter, time required for the function also needs to be considered.
2. Verify the value in the G1IR register is 00h by reading. If the read value is not 00h, repeat writing 00h to the G1IR register.

## 5. Hardware

### 5.1 Example of Hardware Configuration

Figure 5.1 shows a Connection Example.

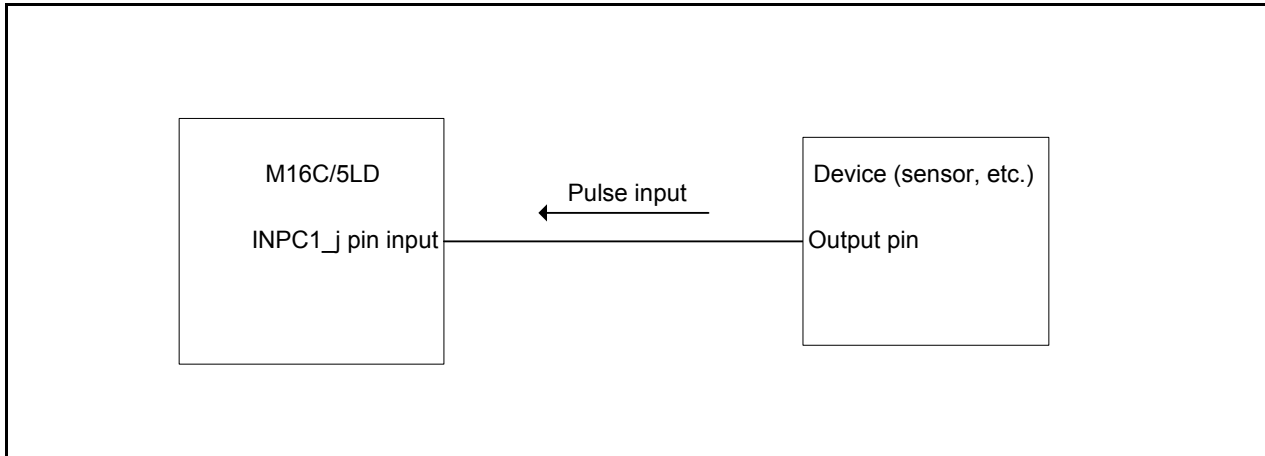


Figure 5.1 Connection Example

### 5.2 Pin Used

Table 5.1 lists the Pin Used and Its Function.

Table 5.1 Pin Used and Its Function

Pin Name	I/O	Function
P2_0/INPC1_0	Input	Input of measured pulse



## 6. Software

Use the time measurement function of timer S to measure the time from the rising edge of an input pulse to the rising edge of next input pulse.

Configure the overflow counter to measure pulse periods that exceed the 16-bit base timer count range. The counter is incremented by 1 every time the base timer overflow interrupt occurs.

For the interrupt by the time measurement trigger input, the base timer value is stored in the `new_capture_val` variable when the time measurement trigger is input. Calculate the pulse period using the `new_capture_val` and `old_capture_val` variables and overflow counter (refer to Table 6.1 for descriptions of terminologies).

The formula for calculating a pulse period is as follows:

$$\text{Pulse period} = (10000h \times \text{overflow counter value}) + \text{new\_capture\_val} - \text{old\_capture\_val}$$

If the processing timing for an overflow and time measurement trigger input are the same, it is necessary to determine if one occurred before the other, or if they occurred simultaneously. The G1TM0 register can be used to determine the timing.

- When the G1TM0 register is smaller than 8000h, the time measurement trigger is input after the overflow.
- When the G1TM0 register is greater than 8000h, the time measurement trigger is input before the overflow, or they occur simultaneously.

The boundary value here is 8000h. One of the following operations is performed depending on the G1TM0 register value.

- When the value is smaller than 8000h, calculate the pulse period after processing the overflow.
- When the value is greater than 8000h, calculate the pulse period before processing the overflow.

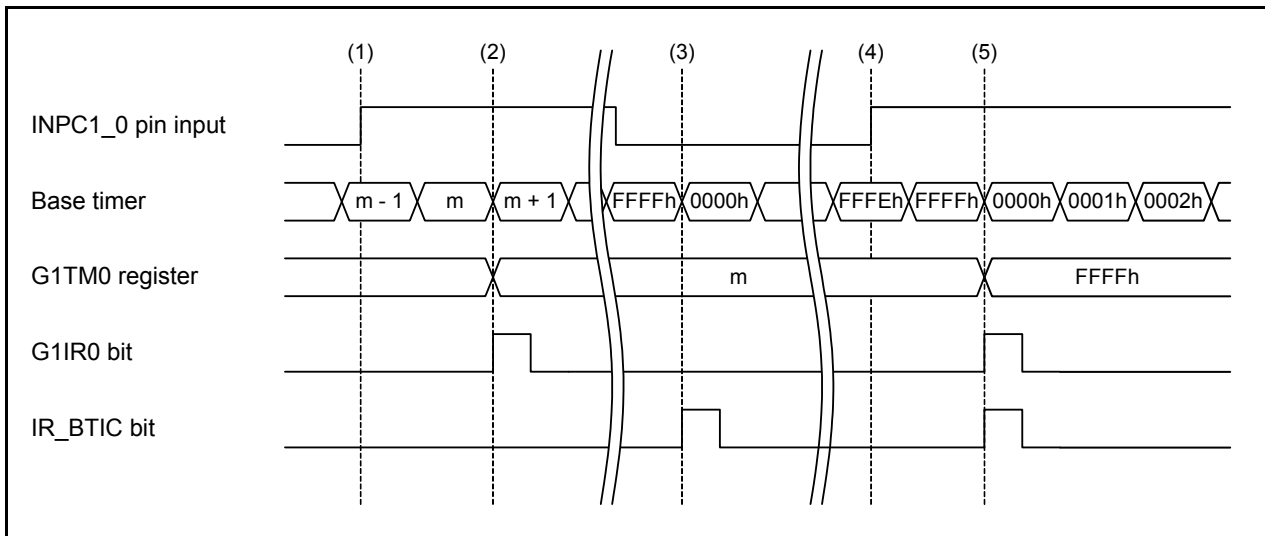
Table 6.1 lists Terminologies Used in This Application Note.

**Table 6.1 Terminologies Used in This Application Note**

Terminology	Description
Overflow	Base timer overflow
Overflow counter	Variable to count the number of overflows
Count delay flag	When the processing timings for an overflow and time measurement input trigger overlap, and the value in the <code>new_capture_val</code> variable is obtained before the overflow, use this flag to increment the overflow counter by 1 after calculating the pulse period.

## 6.1 Operation Overview

Figure 6.1 shows the Input Pulse and Update Timing of Registers.



**Figure 6.1 Input Pulse and Update Timing of Registers**

Operations listed in Figure 6.1 are explained as follows:

- (1) Input the time measurement trigger from the INPC1\_0 pin.
- (2) An interrupt request for IC/OC interrupt 0 is generated at the second count of the base timer from the time measurement trigger input (a maximum delay of two fBT1 cycles occurs). Calculate the pulse period with the new\_capture\_val and old\_capture\_val variables and base time counter in the interrupt handler.
- (3) When the base timer overflows, a base timer interrupt request is generated. Increment the overflow counter by 1 in the interrupt handler.
- (4) A time measurement trigger is input to the INPC1\_0 pin when the base timer is FFFEh.
- (5) An interrupt request for IC/OC interrupt 0 is generated at the second count of the base timer from the time measurement trigger input. Simultaneously, the base timer overflows and a base timer interrupt request is generated. Calculate the pulse period with the count of the overflow counter, new\_capture\_val and old\_capture\_val variables, and base time counter in the interrupt handler.

Processing when only IC/OC interrupt 0 occurs in (2) is described in 6.1.1 Processing When the IC/OC Interrupt 0 Occurs.

Processing when only the base timer interrupt occurs in (3) is described in 6.1.2 Processing When the Base Timer Interrupt Occurs.

Processing when IC/OC interrupt 0 and the base timer interrupt occur simultaneously in (5) is described in 6.1.3 Processing When the Base Timer Interrupt and IC/OC Interrupt 0 Occur Simultaneously.

### 6.1.1 Processing When the IC/OC Interrupt 0 Occurs

This section describes the processing for IC/OC interrupt 0 ((2) in Figure 6.1) which occurs when the time measurement trigger is input to the INPC1\_0 pin ((1) in Figure 6.1).

Figure 6.2 shows the Processing when IC/OC Interrupt 0 Occurs. i to v correspond to i to v in the figure below.

- i. Call the timer S interrupt common processing function.
- ii. After IC/OC interrupt 0 occurs, call the pulse period calculation function.
- iii. Read the value in the G1TM0 register and store it in the new\_capture\_val variable. Calculate the pulse period with the new\_capture\_val and old\_capture\_val variables and overflow counter. Then store the value of the new\_capture\_val variable in the old\_capture\_val variable.
- iv. Reset the overflow counter to 0.
- v. The count delay flag is 0 (global variables are reset to 0 in the initial setting). Thus the overflow counter is not incremented.

When the pulse period is calculated by the IC/OC interrupt 0 the first time, the old\_capture\_val variable is undefined. Thus the calculation result also becomes undefined.

When the time measurement trigger is input again before the pulse period calculation is completed, the calculation cannot be completed correctly.

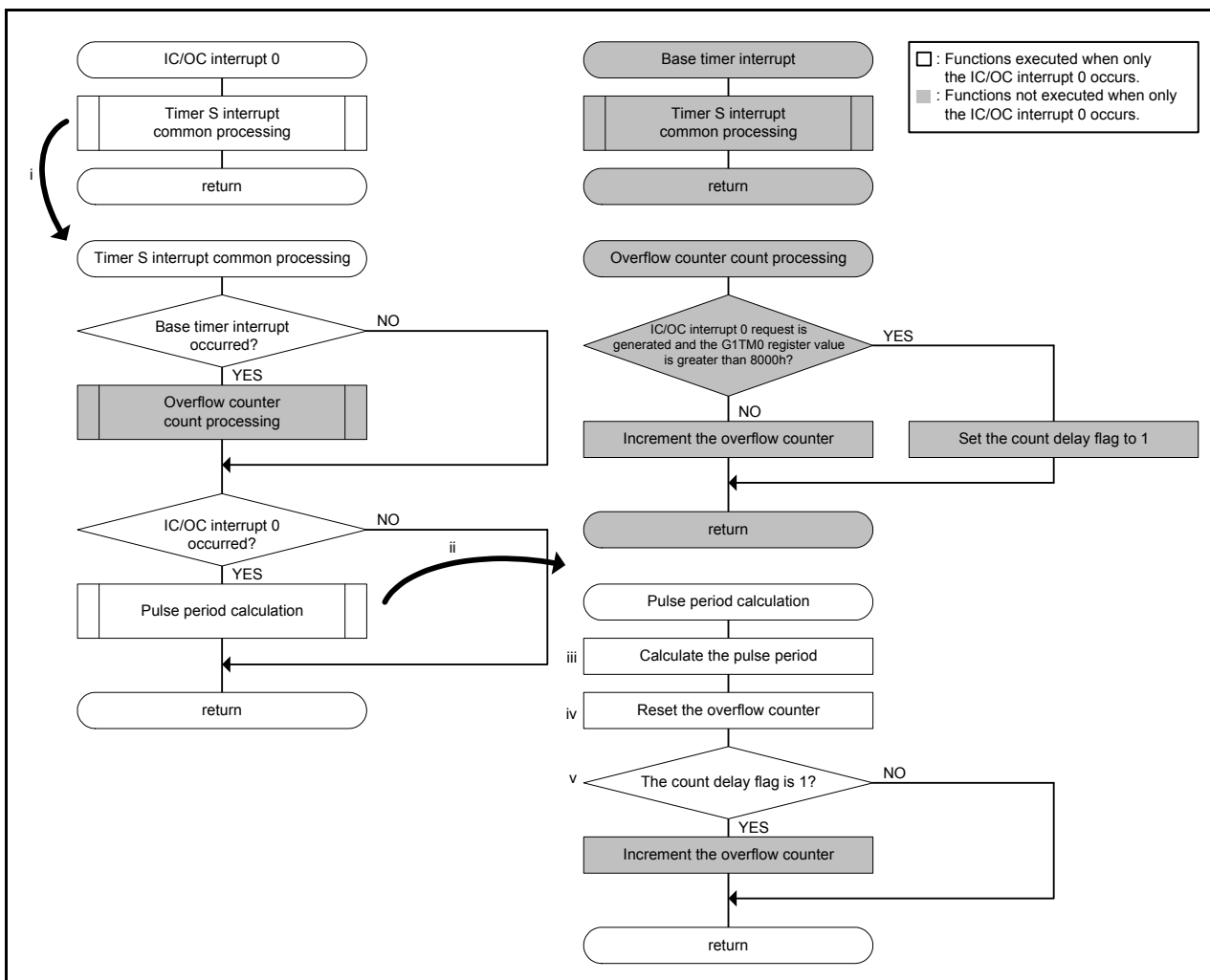


Figure 6.2 Processing when IC/OC Interrupt 0 Occurs

### 6.1.2 Processing When the Base Timer Interrupt Occurs

This section describes processing the base timer interrupt which occurs when the base timer overflows ((3) in Figure 6.1).

Figure 6.3 shows the Processing when the Base Timer Interrupt Occurs. i to iv correspond to i to iv in the figure below.

- i. Call the timer S interrupt common processing function.
- ii. After the base timer interrupt occurs, call the overflow counter count processing function.
- iii. Determine whether an IC/OC interrupt 0 request is generated and also if the new\_capture\_val variable is greater than 8000h.
- iv. Increment the overflow counter by 1.

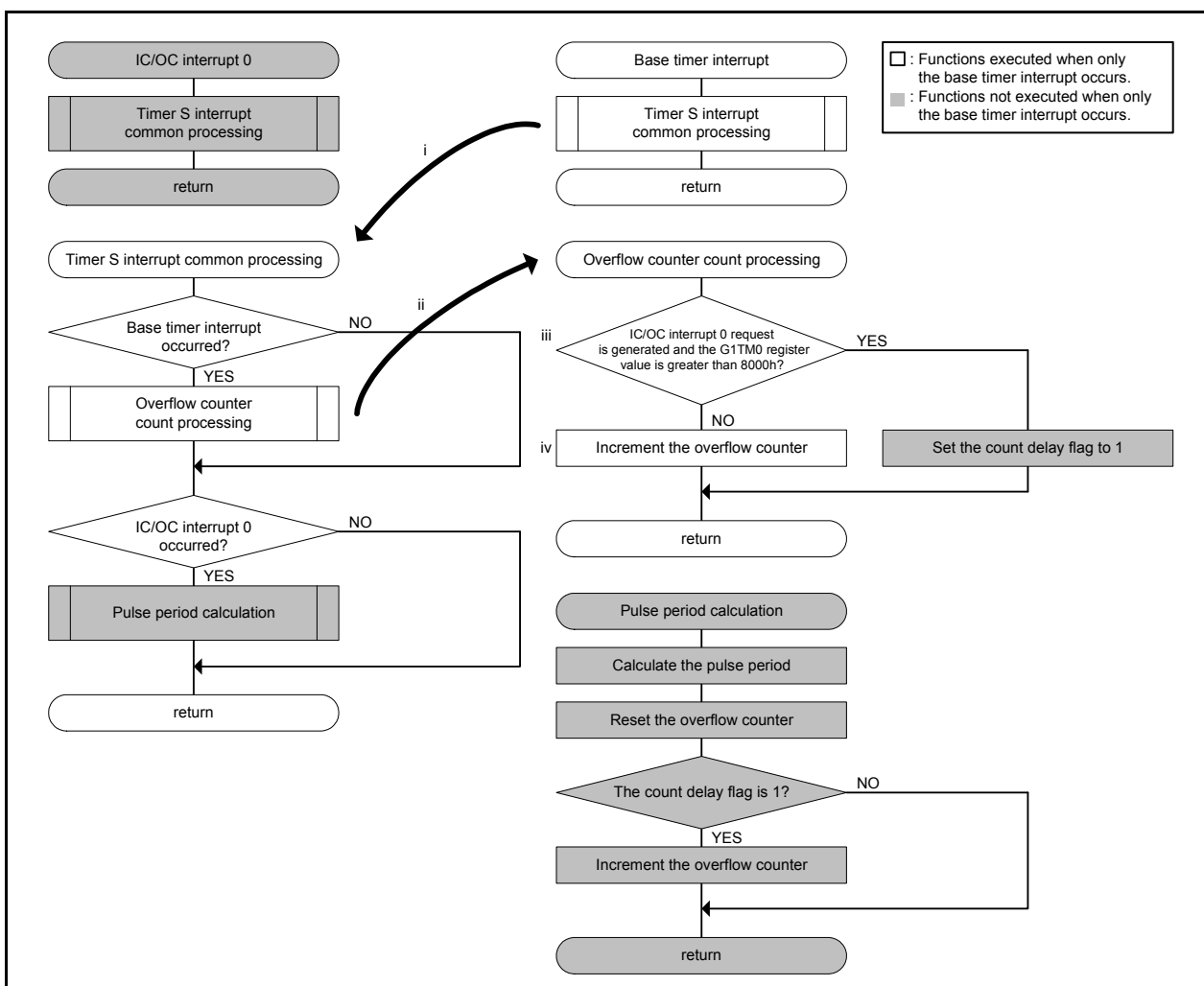


Figure 6.3 Processing when the Base Timer Interrupt Occurs

### 6.1.3 Processing When the Base Timer Interrupt and IC/OC Interrupt 0 Occur Simultaneously

This section describes the processing when IC/OC interrupt 0 and the base timer interrupt occur simultaneously ((5) in Figure 6.1). IC/OC interrupt 0 occurs when the time measurement trigger is input to the INPC1\_0 pin ((4) in Figure 6.1), and the base timer interrupt occurs when the base timer overflows.

If two or more interrupt requests are generated simultaneously in a module which has multiple interrupts, the interrupt which has a lower interrupt priority level may be accepted before the interrupt which has a higher interrupt priority.

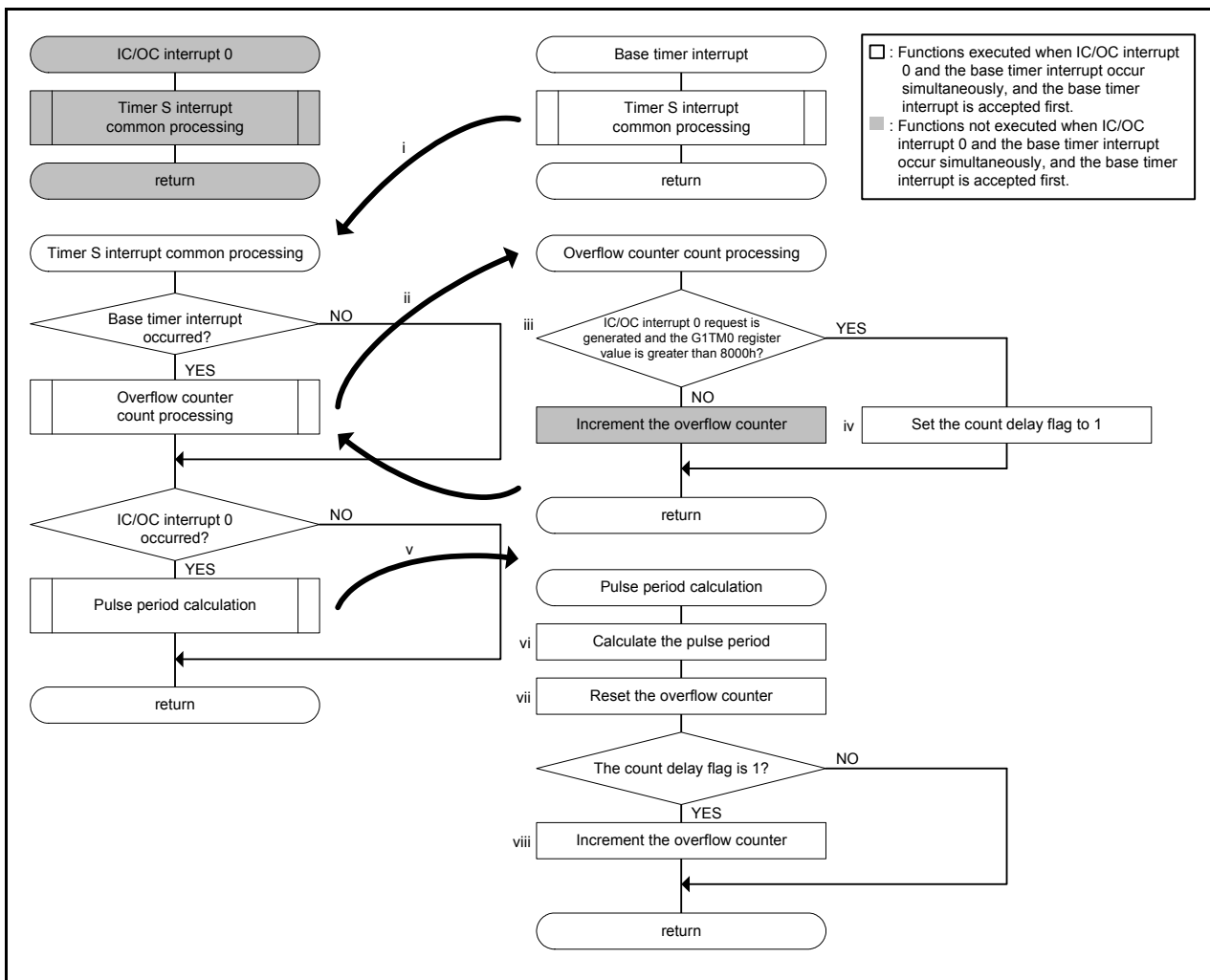
From the reason above, if requests for the base timer interrupt and IC/OC interrupt 0 are generated simultaneously, either one may be accepted first despite the interrupt priorities assigned to them. Therefore, in order to make the interrupt handling procedure the same regardless of which interrupt occurs, the same function is called in both interrupt handlers.

The following describes the processing when the base timer interrupt is accepted first. Figure 6.4 shows the Processing when Interrupt Requests are Generated Simultaneously and the Base Timer Interrupt is Accepted First. i to viii correspond to i to viii in the figure below.

- i. Call the timer S interrupt common processing function.
- ii. After the base timer interrupt occurs, call the overflow counter count processing function.
- iii. Determine whether the time measurement trigger is input before or after the overflow.
- iv. As the time measurement is input at the same time the base timer overflows, the overflow counter is not incremented. Instead, set 1 to the count delay flag to increment the overflow counter after the pulse period calculation.
- v. After the IC/OC interrupt 0 occurs, call the pulse period calculation function.
- vi. Read the value in the G1TM0 register and store it in the new\_capture\_val variable.  
Calculate the pulse period with the new\_capture\_val and old\_capture\_val variables and overflow counter.
- vii. Reset the overflow counter to 0.  
Then store the value of the new\_capture\_val variable in the old\_capture\_val variable.
- viii. As the count delay flag is 1, increment the overflow counter by 1.

When the pulse period calculated due to IC/OC interrupt 0 the first time, the old\_capture\_val variable is undefined. Thus the calculation result also becomes undefined.

When the time measurement trigger is input again before the pulse period calculation is completed, the calculation cannot be completed correctly.



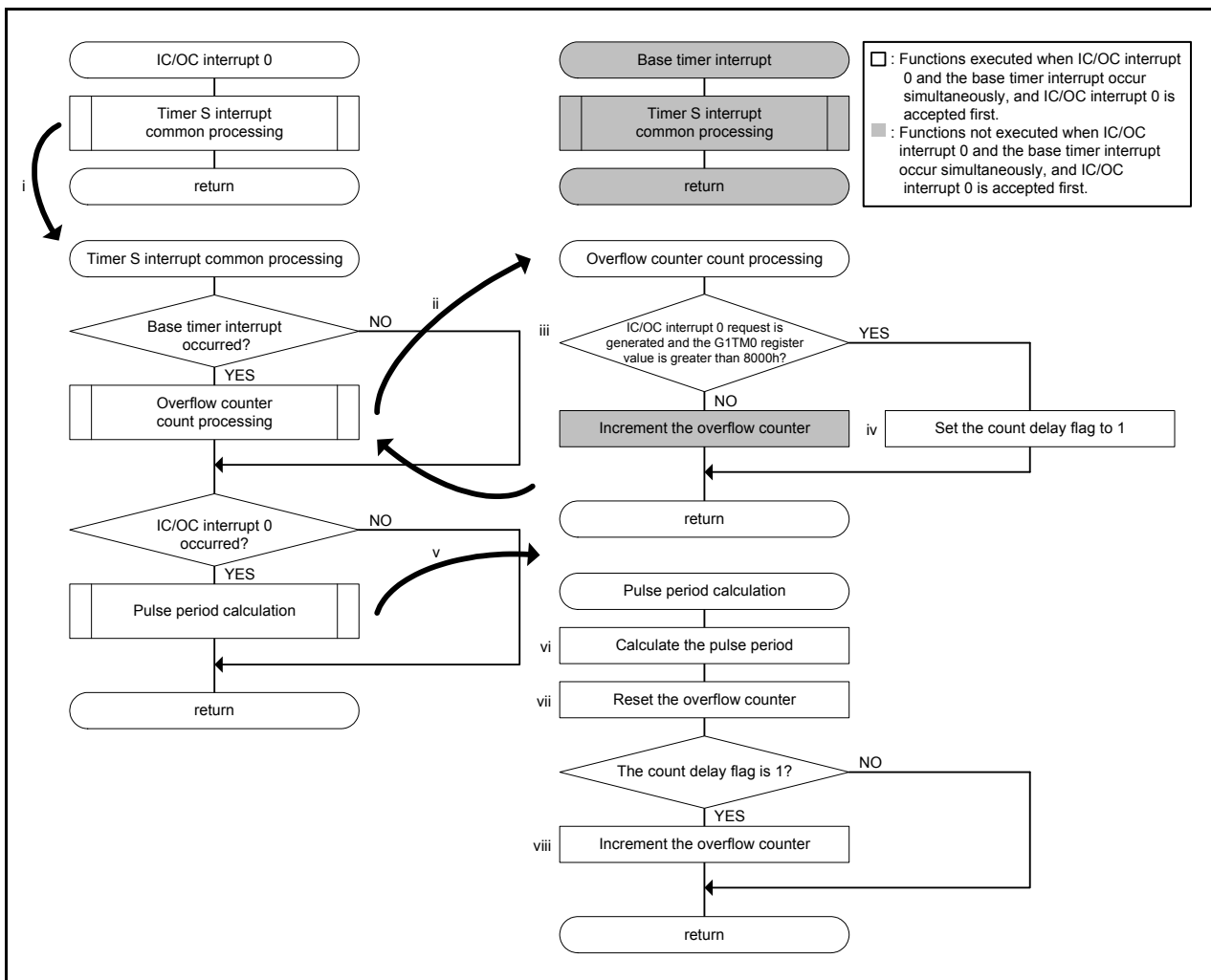
**Figure 6.4 Processing when Interrupt Requests are Generated Simultaneously and the Base Timer Interrupt is Accepted First**

The following describes the processing when the IC/OC interrupt 0 is accepted first. Figure 6.5 shows the Processing when Interrupt Requests are Generated Simultaneously and the IC/OC Interrupt is Accepted First. i to viii correspond to i to viii in the figure below.

- i. Call the timer S interrupt common processing function.
- ii. After the base timer interrupt occurs, call the overflow counter count processing function.
- iii. Determine whether the time measurement trigger is input before or after the overflow.
- iv. As the time measurement is input at the same time the base timer overflows, the overflow counter is not incremented. Instead, set 1 to the count delay flag to increment the overflow counter after the pulse period calculation.
- v. After the IC/OC interrupt 0 occurs, call the pulse period calculation function.
- vi. Read the value in the G1TM0 register and store it in the new\_capture\_val variable.  
Calculate the pulse period with the new\_capture\_val and old\_capture\_val variables and overflow counter.  
Then store the value of the new\_capture\_val variable in the old\_capture\_val variable.
- vii. Reset the overflow counter to 0.
- viii. As the count delay flag is 1, increment the overflow counter by 1.

When the pulse period is calculated due to IC/OC interrupt 0 the first time, the old\_capture\_val variable is undefined. Thus the calculation result also becomes undefined.

When the time measurement trigger is input again during the pulse period calculation, the calculation cannot be completed correctly.



**Figure 6.5 Processing when Interrupt Requests are Generated Simultaneously and the IC/OC Interrupt is Accepted First**

## 6.2 Variables

Table 6.2 lists the Global Variables.

**Table 6.2 Global Variables**

Type	Variable Name	Contents	Function Used
unsigned long	pulse_width	Calculation result of a pulse period	main, pulse_width_calc_func
unsigned short	new_capture_val	Variable to store the value of the base timer when the time measurement trigger is input	main, pulse_width_calc_func
unsigned short	old_capture_val	Variable to store the current value of the new_capture_val variable for calculating the next pulse period	main, pulse_width_calc_func
unsigned char	bt_ovrflw_counter	Overflow counter: Variable to count the number of overflows	main, bt_ovrflw_cnt_func, pulse_width_calc_func
unsigned char	f_delay_ovrflw_cnt	Count delay flag 0: The overflow counter is incremented by 1 before the pulse period calculation 1: The overflow counter is incremented by 1 after the pulse period calculation	main, bt_ovrflw_cnt_func, pulse_width_calc_func
unsigned char	f_bt_int	Base timer interrupt flag 0: Base timer interrupt not requested 1: Base timer interrupt requested	main, _ic_oc_basetimer, ts_int_common_func
unsigned char	f_icoc0_int	IC/OC interrupt 0 flag 0: IC/OC interrupt 0 not requested 1: IC/OC interrupt 0 requested	main, _ic_oc0, ts_int_common_func

## 6.3 Functions

Table 6.3 lists the Functions.

**Table 6.3 Functions**

Function Name	Outline
main	Main processing
mcu_init	CPU clock initialization
peripheral_init	Peripheral function initialization
_ic_oc_basetimer	Base timer interrupt handler
_ic_oc0	IC/OC interrupt 0 handler
ts_int_common_func	Timer S interrupt common processing
bt_ovrflw_cnt_func	Overflow counter count processing
pulse_width_calc_func	Pulse period calculation



## 6.4 Function Specifications

The following tables list the sample code function specifications.

main	
Outline	Main processing
Header	None
Declaration	void main(void)
Explanation	Call the CPU clock initialization and peripheral function initialization to initialize the CPU clock and peripherals. Reset global variables to 0. Enable maskable interrupts and start the base timer counting.
Argument	None
Returned value	None

mcu_init	
Outline	CPU clock initialization
Header	None
Declaration	void mcu_init(void)
Explanation	This function is called in the main processing. Set the CPU clock to PLL clock multiplied by 4 (divided by 2, multiplied by 8).
Argument	None
Returned value	None

peripheral_init	
Outline	Peripheral function initialization
Header	None
Declaration	void peripheral_init(void)
Explanation	This function is called in the main processing. Set channel 0 of timer S to the time measurement function.
Argument	None
Returned value	None

_ic_oc_basetimer	
Outline	Base timer interrupt handler
Header	None
Declaration	void _ic_oc_basetimer(void)
Explanation	This function is called when the base timer overflows and the base timer interrupt occurs. Set the base timer interrupt flag to 1 (interrupt requested). Then call the timer S interrupt common processing.
Argument	None
Returned value	None

_ic_oc0	
Outline	IC/OC interrupt 0 handler
Header	None
Declaration	void _ic_oc0(void)
Explanation	This function is called when the time measurement trigger is input and IC/OC interrupt 0 occurs. Set the IC/OC interrupt 0 flag to 1 (interrupt requested). Then call the timer S interrupt common processing.
Argument	None
Returned value	None

ts_int_common_func	
Outline	Timer S interrupt common processing
Header	None
Declaration	void ts_int_common_func(void)
Explanation	This function is called in the base timer interrupt handler and the IC/OC interrupt 0 handler. Check the interrupt request flag (IR flag) to determine if requests for the base timer interrupt and IC/OC interrupt 0 are generated simultaneously. <ul style="list-style-type: none"> <li>• When checking the base timer interrupt request, if the IR flag is 1 (interrupt requested), set the base timer interrupt flag to 1 (interrupt requested).</li> <li>• When checking the IC/OC interrupt 0 request, if the IR flag is 1 (interrupt requested), set the IC/OC interrupt 0 flag to 1 (interrupt requested).</li> </ul> When the base timer interrupt flag is 1, call the overflow counter count processing. When the IC/OC interrupt 0 flag is 1, call the pulse period calculation.
Argument	None
Returned value	None

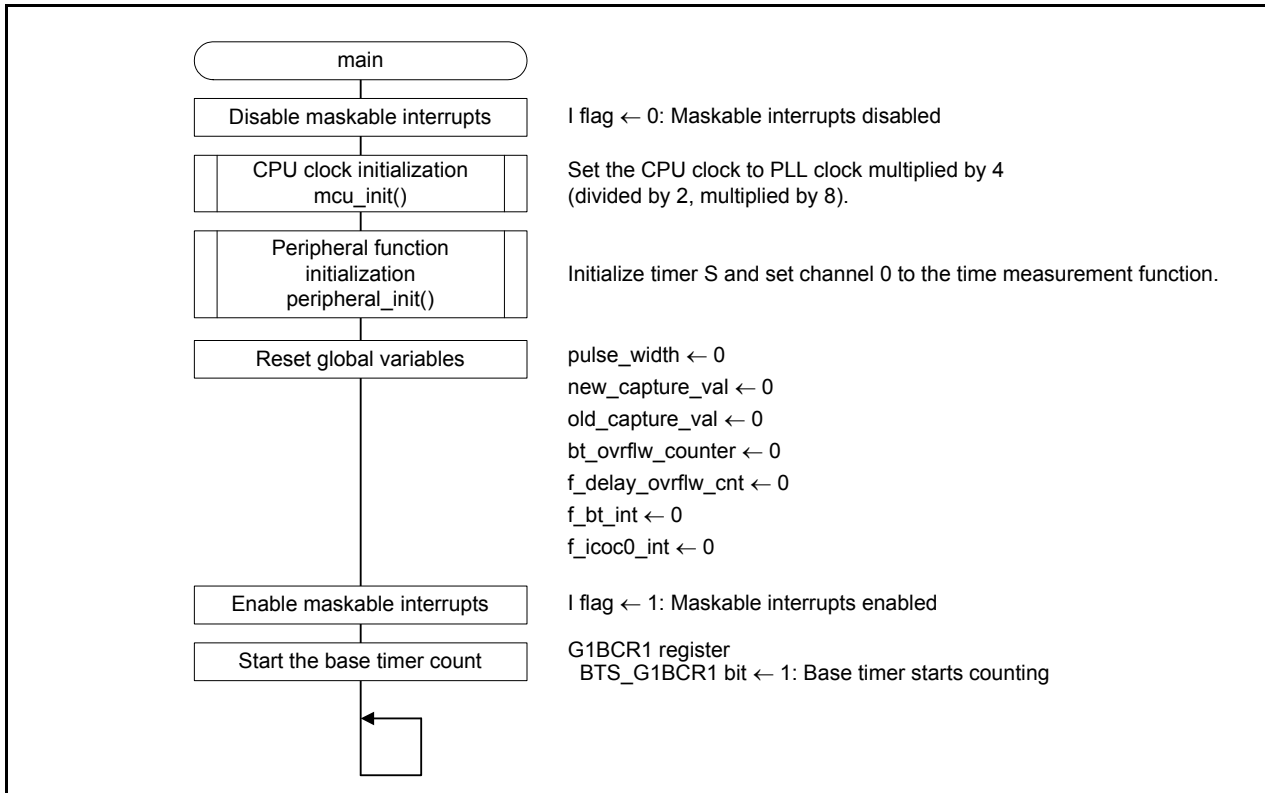
bt_ovrflw_cnt_func	
Outline	Overflow counter count processing
Header	None
Declaration	void bt_ovrflw_cnt_func(void)
Explanation	When the base timer interrupt flag is 1 (interrupt requested), this function is called in the timer S interrupt common processing. Increment the overflow counter by 1. However if the IC/OC interrupt 0 flag is 1, and the value in the time measurement register is greater than 8000h (an overflow does not occur when the time measurement trigger is input), set the count delay flag to 1.
Argument	None
Returned value	None

pulse_width_calc_func	
Outline	Pulse period calculation
Header	None
Declaration	void pulse_width_calc_func(void)
Explanation	<p>When the IC/OC interrupt 0 flag is 1 (interrupt requested), this function is called in the timer S interrupt common processing. Store the G1TMj register value in the new_capture_val variable. Calculate the pulse period with the new_capture_val and old_capture_val variables and overflow counter value.</p> <p>The calculation formula is as follows: Pulse period = (10000h × overflow counter value) + new_capture_val - old_capture_val</p> <p>After calculation, store the value of the new_capture_val variable in the old_capture_val variable. Reset the overflow counter. If the count delay flag is 1, increment the overflow counter by 1.</p>
Argument	None
Returned value	None

## 6.5 Flowcharts

### 6.5.1 Main Processing

Figure 6.6 shows the Main Processing.



**Figure 6.6 Main Processing**

## 6.5.2 Peripheral Function Initialization

Figure 6.7 shows the Peripheral Function Initialization.

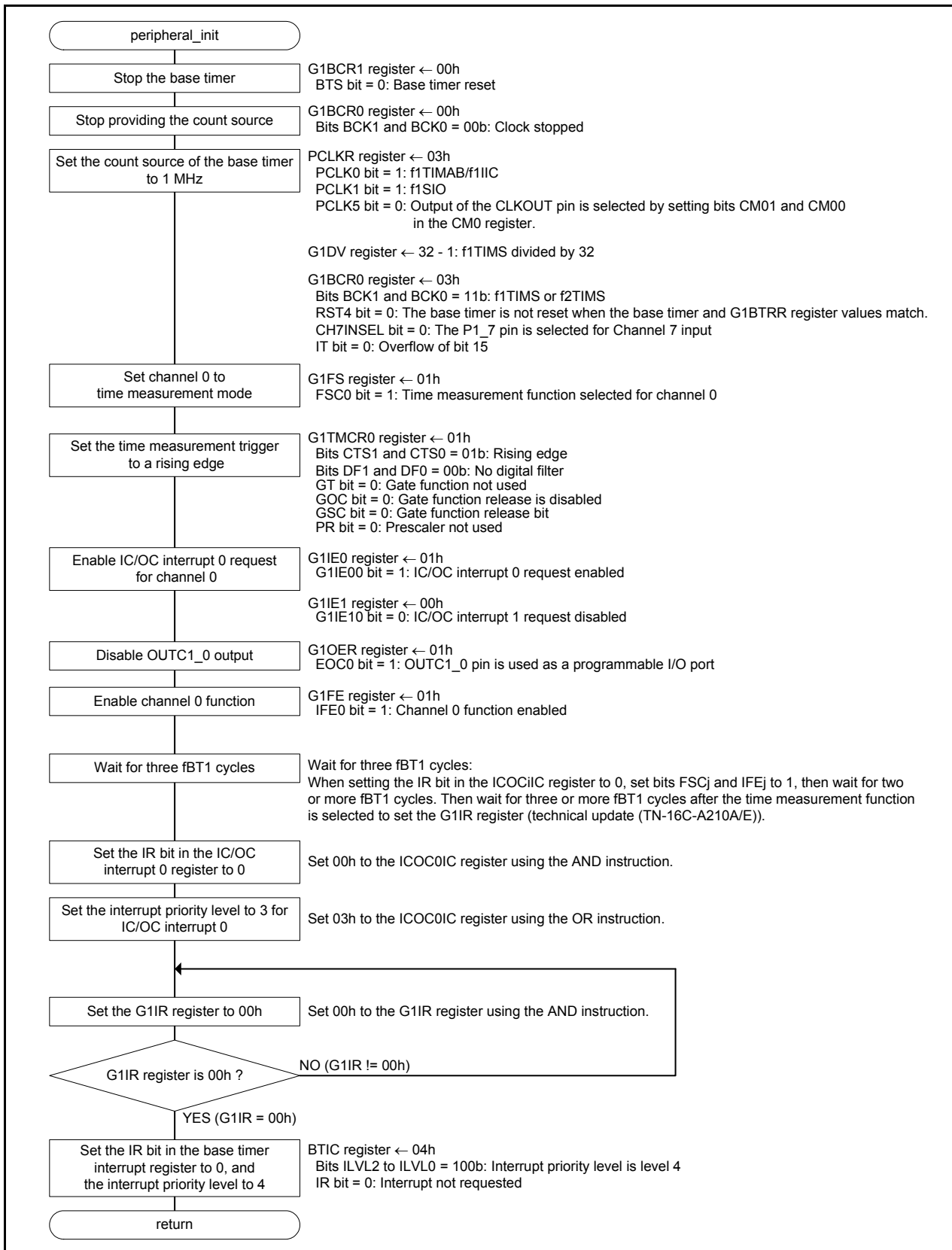


Figure 6.7 Peripheral Function Initialization

### 6.5.3 Base Timer Interrupt Handler

Figure 6.8 shows the Base Timer Interrupt.

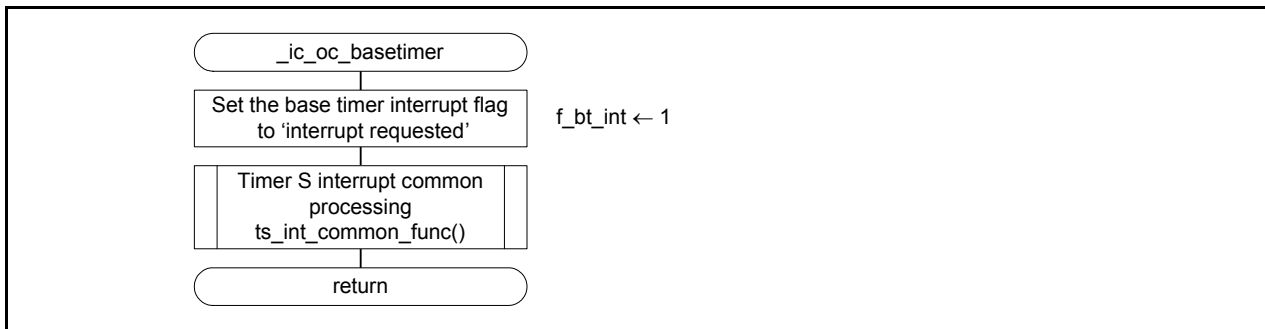


Figure 6.8 Base Timer Interrupt

### 6.5.4 IC/OC Interrupt 0 Handler

Figure 6.9 shows the IC/OC Interrupt 0.

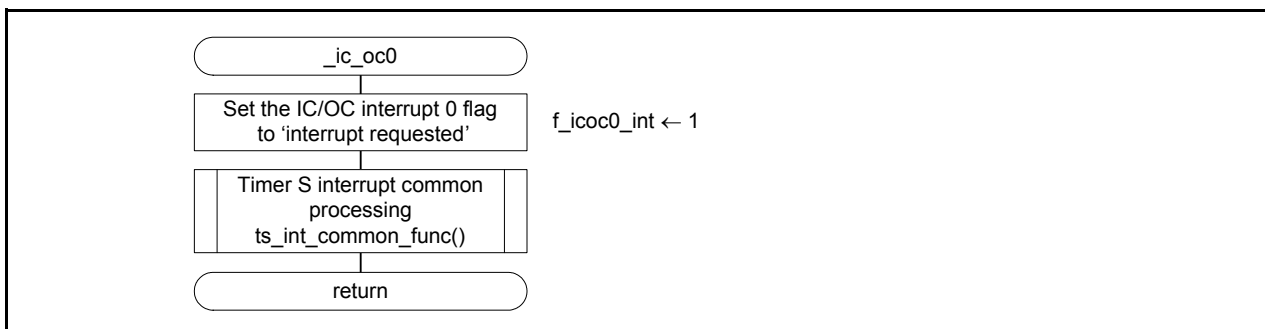


Figure 6.9 IC/OC Interrupt 0

### 6.5.5 Timer S Interrupt Common Processing

Figure 6.10 shows the Timer S Interrupt Common Processing.

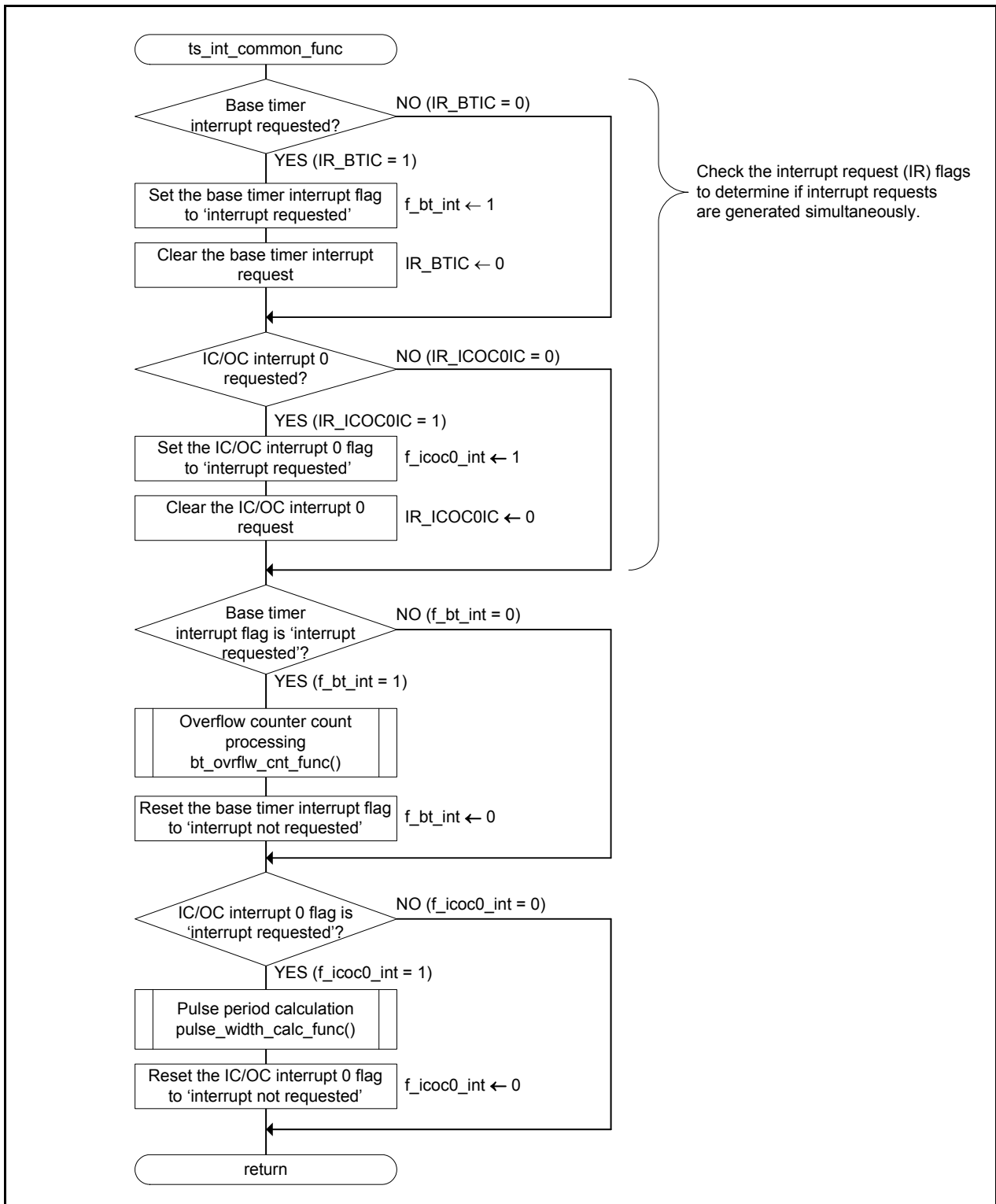


Figure 6.10 Timer S Interrupt Common Processing

### 6.5.6 Overflow Counter Count Processing

Figure 6.11 shows the Overflow Counter Count Processing.

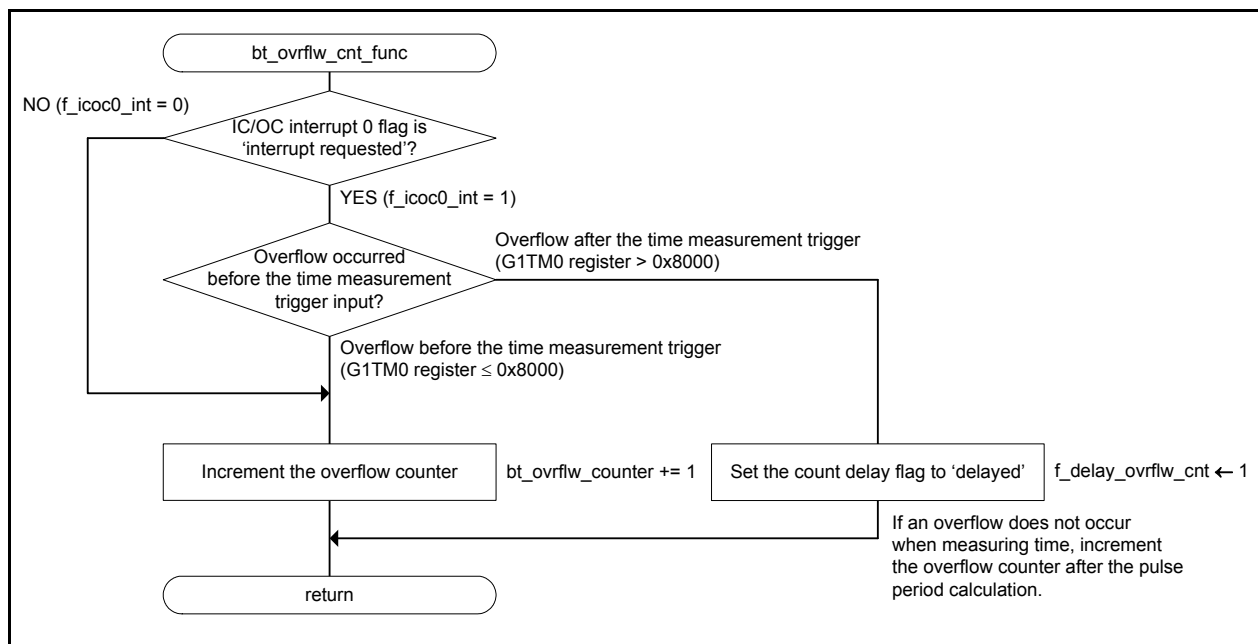


Figure 6.11 Overflow Counter Count Processing



### 6.5.7 Pulse Period Calculation

Figure 6.12 shows the Pulse Period Calculation.

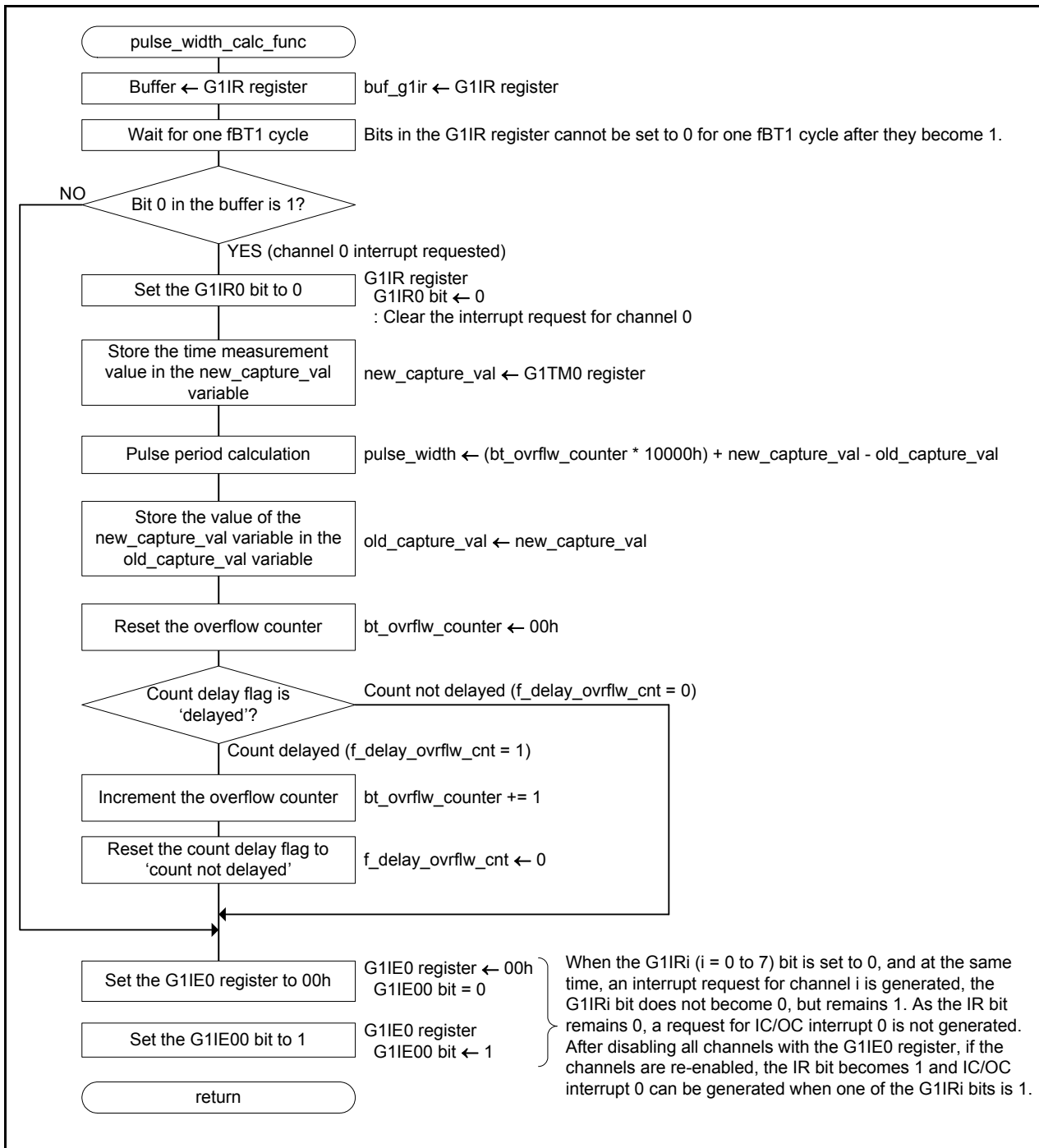


Figure 6.12 Pulse Period Calculation

## 7. Sample Code

Sample code can be downloaded from the Renesas Electronics website.

## 8. Reference Documents

M16C/5LD Group, M16C/56D Group User's Manual: Hardware Rev.1.20

M16C/5L Group, M16C/56 Group User's Manual: Hardware Rev.1.10

M16C/5M Group, M16C/57 Group User's Manual: Hardware Rev.1.10

M16C/6C Group User's Manual: Hardware Rev.2.00

The latest versions can be downloaded from the Renesas Electronics website.

Technical Update/Technical News

The latest information can be downloaded from the Renesas Electronics website.

C Compiler User's Manual

M16C Series, R8C Family C Compiler Package V.5.45

C Compiler User's Manual Rev.2.00

The latest version can be downloaded from the Renesas Electronics website.

## Website and Support

Renesas Electronics website

<http://www.renesas.com/>

Inquiries

<http://www.renesas.com/contact/>

Revision History	M16C/5LD, M16C/56D, M16C/5L, M16C/56, M16C/5M, M16C/57, and M16C/6C Groups Method for Measuring the Pulse Width or Pulse Period When the 16-bit Base Timer Exceeds the Count Range in Timer S
------------------	--

Rev.	Date	Description	
		Page	Summary
1.00	Apr. 27, 2012	—	First edition issued

All trademarks and registered trademarks are the property of their respective owners.
---

## General Precautions in the Handling of MPU/MCU Products

The following usage notes are applicable to all MPU/MCU products from Renesas. For detailed usage notes on the products covered by this manual, refer to the relevant sections of the manual. If the descriptions under General Precautions in the Handling of MPU/MCU Products and in the body of the manual differ from each other, the description in the body of the manual takes precedence.

### 1. Handling of Unused Pins

Handle unused pins in accord with the directions given under Handling of Unused Pins in the manual.

- The input pins of CMOS products are generally in the high-impedance state. In operation with an unused pin in the open-circuit state, extra electromagnetic noise is induced in the vicinity of LSI, an associated shoot-through current flows internally, and malfunctions occur due to the false recognition of the pin state as an input signal become possible. Unused pins should be handled as described under Handling of Unused Pins in the manual.

### 2. Processing at Power-on

The state of the product is undefined at the moment when power is supplied.

- The states of internal circuits in the LSI are indeterminate and the states of register settings and pins are undefined at the moment when power is supplied.

In a finished product where the reset signal is applied to the external reset pin, the states of pins are not guaranteed from the moment when power is supplied until the reset process is completed.

In a similar way, the states of pins in a product that is reset by an on-chip power-on reset function are not guaranteed from the moment when power is supplied until the power reaches the level at which resetting has been specified.

### 3. Prohibition of Access to Reserved Addresses

Access to reserved addresses is prohibited.

- The reserved addresses are provided for the possible future expansion of functions. Do not access these addresses; the correct operation of LSI is not guaranteed if they are accessed.

### 4. Clock Signals

After applying a reset, only release the reset line after the operating clock signal has become stable. When switching the clock signal during program execution, wait until the target clock signal has stabilized.

- When the clock signal is generated with an external resonator (or from an external oscillator) during a reset, ensure that the reset line is only released after full stabilization of the clock signal. Moreover, when switching to a clock signal produced with an external resonator (or by an external oscillator) while program execution is in progress, wait until the target clock signal is stable.

### 5. Differences between Products

Before changing from one product to another, i.e. to one with a different part number, confirm that the change will not lead to problems.

- The characteristics of MPU/MCU in the same group but having different part numbers may differ because of the differences in internal memory capacity and layout pattern. When changing to products of different part numbers, implement a system-evaluation test for each of the products.

## Notice

1. All information included in this document is current as of the date this document is issued. Such information, however, is subject to change without any prior notice. Before purchasing or using any Renesas Electronics products listed herein, please confirm the latest product information with a Renesas Electronics sales office. Also, please pay regular and careful attention to additional and different information to be disclosed by Renesas Electronics such as that disclosed through our website.
2. Renesas Electronics does not assume any liability for infringement of patents, copyrights, or other intellectual property rights of third parties by or arising from the use of Renesas Electronics products or technical information described in this document. No license, express, implied or otherwise, is granted hereby under any patents, copyrights or other intellectual property rights of Renesas Electronics or others.
3. You should not alter, modify, copy, or otherwise misappropriate any Renesas Electronics product, whether in whole or in part.
4. Descriptions of circuits, software and other related information in this document are provided only to illustrate the operation of semiconductor products and application examples. You are fully responsible for the incorporation of these circuits, software, and information in the design of your equipment. Renesas Electronics assumes no responsibility for any losses incurred by you or third parties arising from the use of these circuits, software, or information.
5. When exporting the products or technology described in this document, you should comply with the applicable export control laws and regulations and follow the procedures required by such laws and regulations. You should not use Renesas Electronics products or the technology described in this document for any purpose relating to military applications or use by the military, including but not limited to the development of weapons of mass destruction. Renesas Electronics products and technology may not be used for or incorporated into any products or systems whose manufacture, use, or sale is prohibited under any applicable domestic or foreign laws or regulations.
6. Renesas Electronics has used reasonable care in preparing the information included in this document, but Renesas Electronics does not warrant that such information is error free. Renesas Electronics assumes no liability whatsoever for any damages incurred by you resulting from errors in or omissions from the information included herein.
7. Renesas Electronics products are classified according to the following three quality grades: "Standard", "High Quality", and "Specific". The recommended applications for each Renesas Electronics product depends on the product's quality grade, as indicated below. You must check the quality grade of each Renesas Electronics product before using it in a particular application. You may not use any Renesas Electronics product for any application categorized as "Specific" without the prior written consent of Renesas Electronics. Further, you may not use any Renesas Electronics product for any application for which it is not intended without the prior written consent of Renesas Electronics. Renesas Electronics shall not be in any way liable for any damages or losses incurred by you or third parties arising from the use of any Renesas Electronics product for an application categorized as "Specific" or for which the product is not intended where you have failed to obtain the prior written consent of Renesas Electronics. The quality grade of each Renesas Electronics product is "Standard" unless otherwise expressly specified in a Renesas Electronics data sheets or data books, etc.  
\*Standard\*: Computers; office equipment; communications equipment; test and measurement equipment; audio and visual equipment; home electronic appliances; machine tools; personal electronic equipment; and industrial robots.  
\*High Quality\*: Transportation equipment (automobiles, trains, ships, etc.); traffic control systems; anti-disaster systems; anti-crime systems; safety equipment; and medical equipment not specifically designed for life support.  
\*Specific\*: Aircraft; aerospace equipment; submersible repeaters; nuclear reactor control systems; medical equipment or systems for life support (e.g. artificial life support devices or systems), surgical implantations, or healthcare intervention (e.g. excision, etc.), and any other applications or purposes that pose a direct threat to human life.
8. You should use the Renesas Electronics products described in this document within the range specified by Renesas Electronics, especially with respect to the maximum rating, operating supply voltage range, movement power voltage range, heat radiation characteristics, installation and other product characteristics. Renesas Electronics shall have no liability for malfunctions or damages arising out of the use of Renesas Electronics products beyond such specified ranges.
9. Although Renesas Electronics endeavors to improve the quality and reliability of its products, semiconductor products have specific characteristics such as the occurrence of failure at a certain rate and malfunctions under certain use conditions. Further, Renesas Electronics products are not subject to radiation resistance design. Please be sure to implement safety measures to guard them against the possibility of physical injury, and injury or damage caused by fire in the event of the failure of a Renesas Electronics product, such as safety design for hardware and software including but not limited to redundancy, fire control and malfunction prevention, appropriate treatment for aging degradation or any other appropriate measures. Because the evaluation of microcomputer software alone is very difficult, please evaluate the safety of the final products or system manufactured by you.
10. Please contact a Renesas Electronics sales office for details as to environmental matters such as the environmental compatibility of each Renesas Electronics product. Please use Renesas Electronics products in compliance with all applicable laws and regulations that regulate the inclusion or use of controlled substances, including without limitation, the EU RoHS Directive. Renesas Electronics assumes no liability for damages or losses occurring as a result of your noncompliance with applicable laws and regulations.
11. This document may not be reproduced or duplicated, in any form, in whole or in part, without prior written consent of Renesas Electronics.
12. Please contact a Renesas Electronics sales office if you have any questions regarding the information contained in this document or Renesas Electronics products, or if you have any other inquiries.  
(Note 1) "Renesas Electronics" as used in this document means Renesas Electronics Corporation and also includes its majority-owned subsidiaries.  
(Note 2) "Renesas Electronics product(s)" means any product developed or manufactured by or for Renesas Electronics.



### SALES OFFICES

### Renesas Electronics Corporation

<http://www.renesas.com>

Refer to "<http://www.renesas.com/>" for the latest and detailed information.

**Renesas Electronics America Inc.**  
2880 Scott Boulevard Santa Clara, CA 95050-2554, U.S.A.  
Tel: +1-408-588-6000, Fax: +1-408-588-6130

**Renesas Electronics Canada Limited**  
1101 Nicholson Road, Newmarket, Ontario L3Y 9C3, Canada  
Tel: +1-905-898-5441, Fax: +1-905-898-3220

**Renesas Electronics Europe Limited**  
Dukes Meadow, Millboard Road, Bourne End, Buckinghamshire, SL8 5FH, U.K  
Tel: +44-1628-585-100, Fax: +44-1628-585-900

**Renesas Electronics Europe GmbH**  
Arcadiastrasse 10, 40472 Düsseldorf, Germany  
Tel: +49-211-65030, Fax: +49-211-6503-1327

**Renesas Electronics (China) Co., Ltd.**  
7th Floor, Quantum Plaza, No.27 ZhiChunLu Haidian District, Beijing 100083, P.R.China  
Tel: +86-10-8235-1155, Fax: +86-10-8235-7679

**Renesas Electronics (Shanghai) Co., Ltd.**  
Unit 204, 205, AZIA Center, No.1233 Lujiazui Ring Rd., Pudong District, Shanghai 200120, China  
Tel: +86-21-5877-1818, Fax: +86-21-6887-7858 / -7898

**Renesas Electronics Hong Kong Limited**  
Unit 1601-1613, 16/F., Tower 2, Grand Century Place, 193 Prince Edward Road West, Mongkok, Kowloon, Hong Kong  
Tel: +852-2886-9318, Fax: +852 2886-9022/9044

**Renesas Electronics Taiwan Co., Ltd.**  
13F, No. 363, Fu Shing North Road, Taipei, Taiwan  
Tel: +886-2-8175-9600, Fax: +886 2-8175-9670

**Renesas Electronics Singapore Pte. Ltd.**  
1 harbourFront Avenue, #06-10, Keppel Bay Tower, Singapore 098632  
Tel: +65-6213-0200, Fax: +65-6278-8001

**Renesas Electronics Malaysia Sdn.Bhd.**  
Unit 906, Block B, Menara Amcorp, Amcorp Trade Centre, No. 18, Jin Persiaran Barat, 46050 Petaling Jaya, Selangor Darul Ehsan, Malaysia  
Tel: +60-3-7955-9390, Fax: +60-3-7955-9510

**Renesas Electronics Korea Co., Ltd.**  
11F., Samik Lavied' or Bldg., 720-2 Yeoksam-Dong, Kangnam-Ku, Seoul 135-080, Korea  
Tel: +82-2-558-3737, Fax: +82-2-558-5141