

RENESAS TECHNICAL UPDATE

1753, Shimonumabe, Nakahara-ku, Kawasaki-shi, Kanagawa 211-8668 Japan
Renesas Electronics Corporation

Product Category	MPU & MCU		Document No.	TN-RX*-A114A/E	Rev.	1.00
Title	Corrections to User's Manual regarding the FASR.EXS bit for the Flash Memory in the RX110 Group		Information Category	Technical Notification		
Applicable Product	RX110 Group	Lot No.	Reference Document	RX110 Group User's Manual: Hardware Rev.1.00 (R01UH0421EJ0100) Specification Changes to the RX110 Group (TN-RX*-A112A/E) Corrections to Descriptions for the Flash Memory in the RX110 Group User's Manual (TN-RX*-A113A/E)		
		All				

This document describes corrections to the description for the FASR.EXS bit in section 31. Flash Memory of RX110 Group User's Manual: Hardware Rev.1.00.

• Page 847 of 966

Description for the EXS bit of 31.3.7 Flash Area Select Register (FASR) is corrected as follows:

Before correction

Set this bit to 1 **when programming** the extra area **using the FEXCR register**.

Set this bit to 0 **when not programming the extra area**.

After correction

Set this bit to 1 **before issuing a software command (unique ID read, start-up area information program, or access window information program)** for the extra area. Set this bit to 0 **before issuing a software command (program, block erase, or blank check)** for the user area.

After issuing a software command, do not change the value until changing it for issuing the next software command.

• Page 866 of 966

Figure 31.7 in (3) Programming and Erasure Procedures of 31.6.3 Software Command Usage is corrected as follows:

Before correction

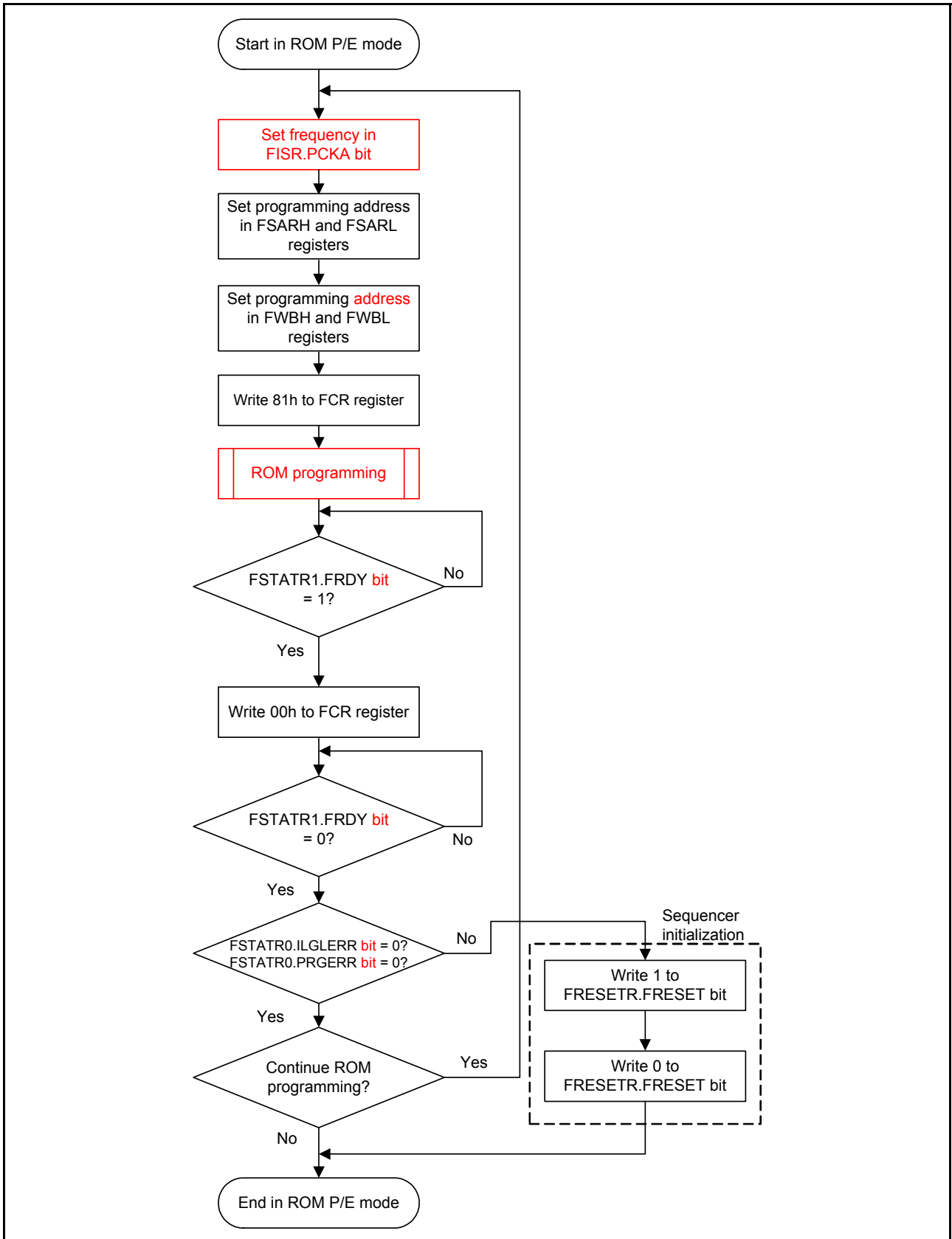


Figure 31.7 ROM Programming Procedure

After correction

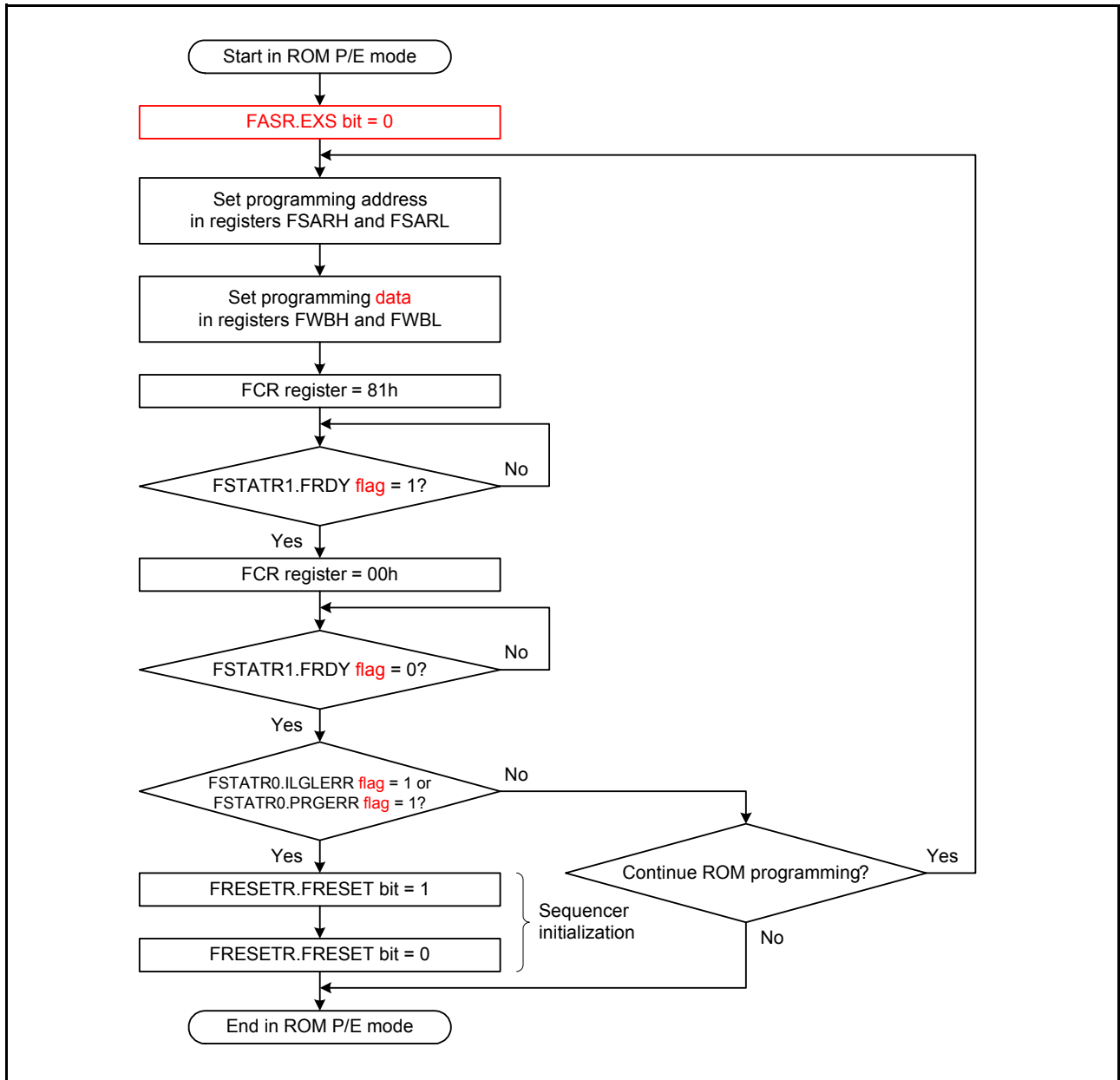


Figure 31.7 Procedure to Issue the Program Command for the ROM

• Page 867 of 966

Figure 31.8 in (3) Programming and Erasure Procedures of 31.6.3 Software Command Usage is corrected as follows:

Before correction

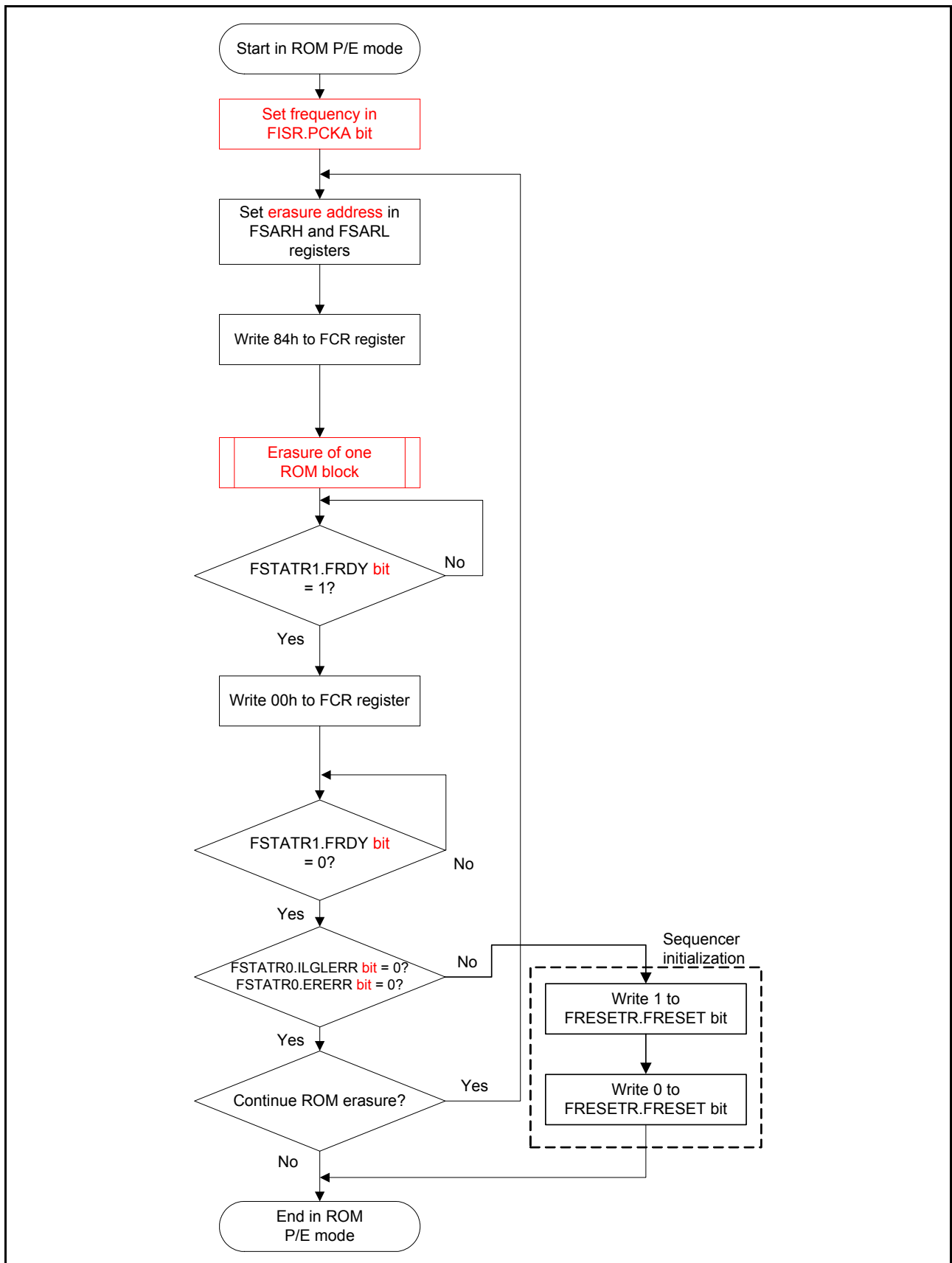


Figure 31.8 ROM Block Erase Procedure

After correction

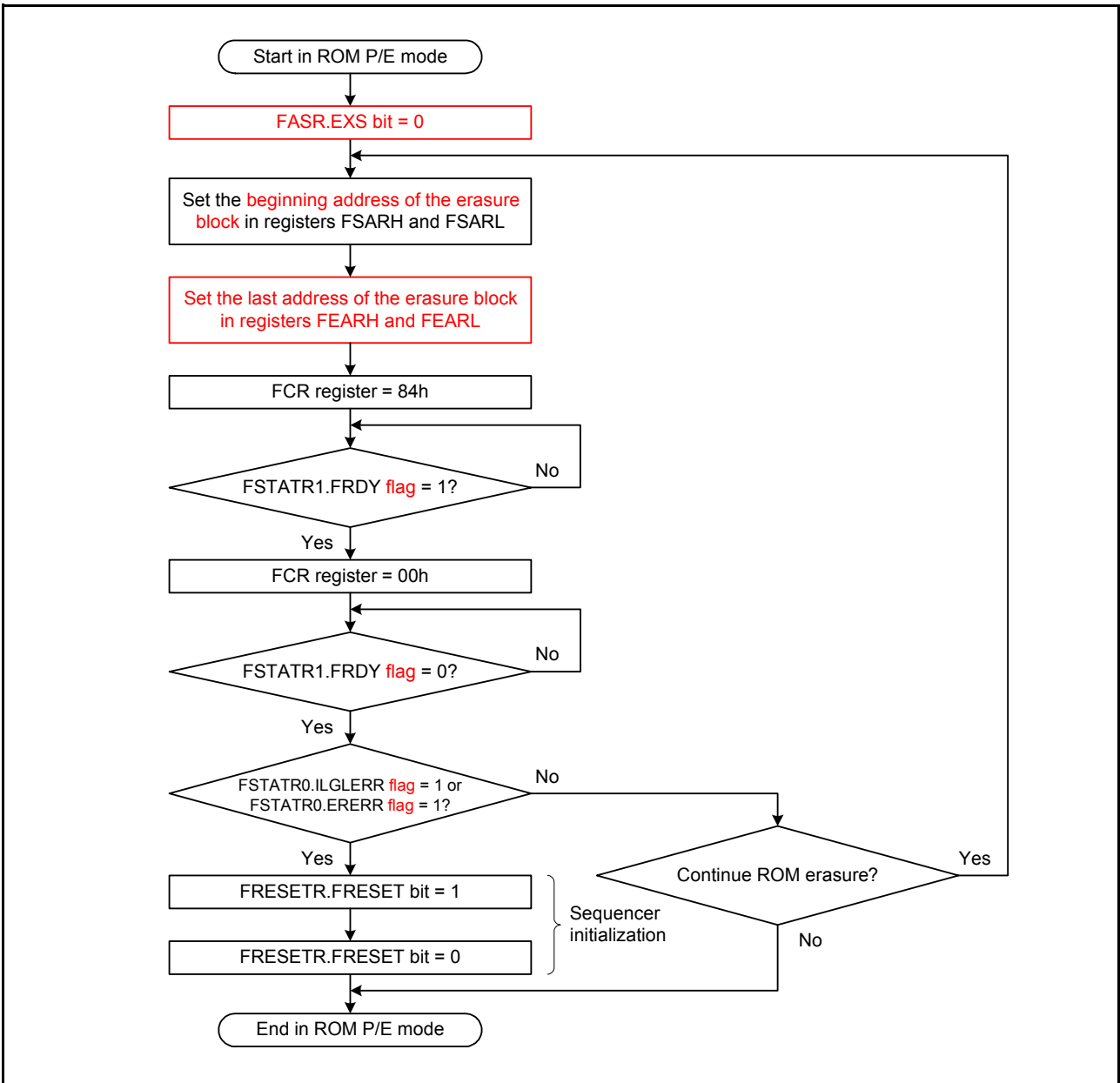


Figure 31.8 Procedure to Issue the Block Erase Command for the ROM

• Page 868 of 966

Figure 31.9 in (3) Programming and Erasure Procedures of 31.6.3 Software Command Usage is corrected as follows:

Before correction

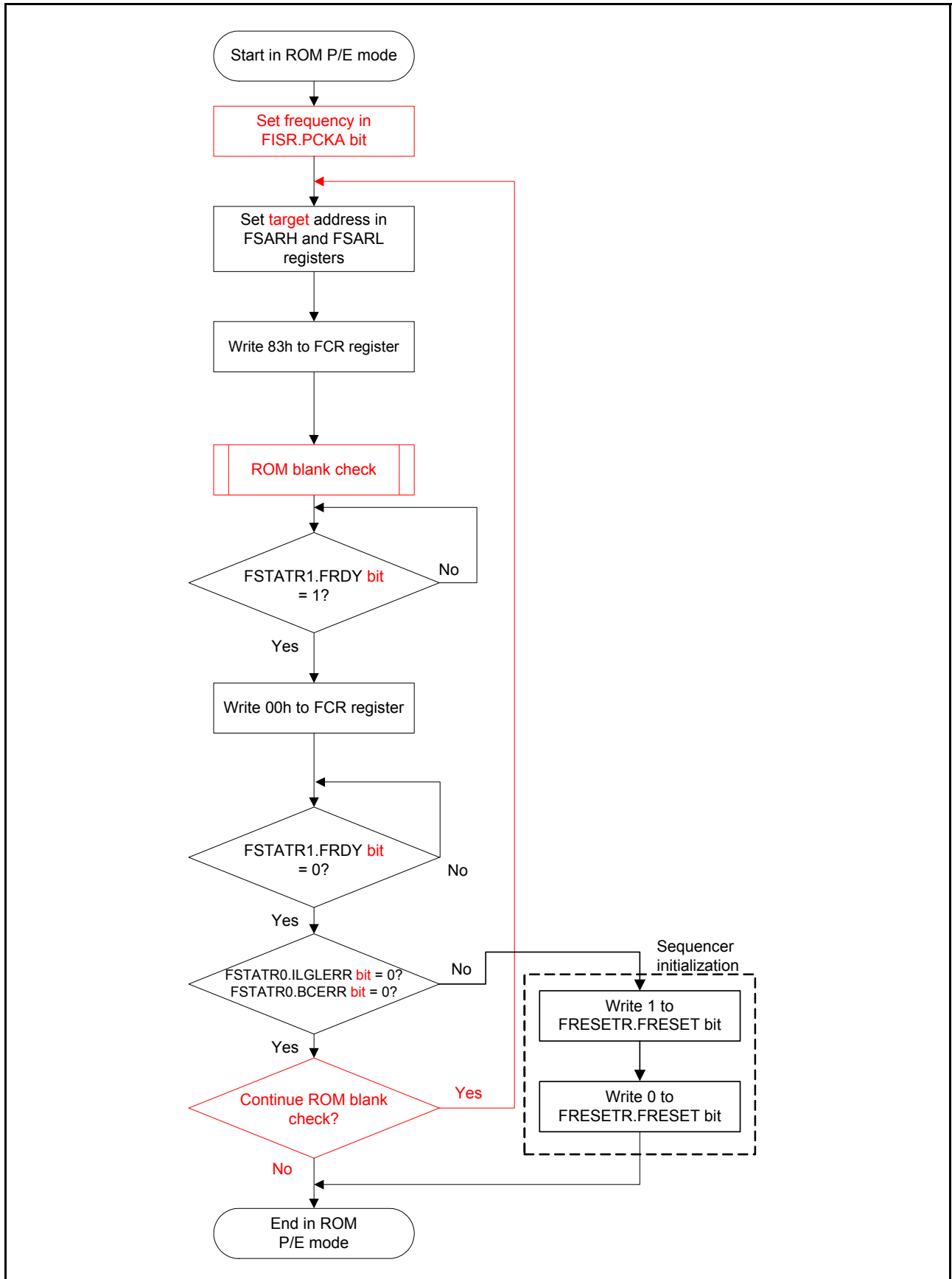


Figure 31.9 ROM Blank Check Procedure

After correction

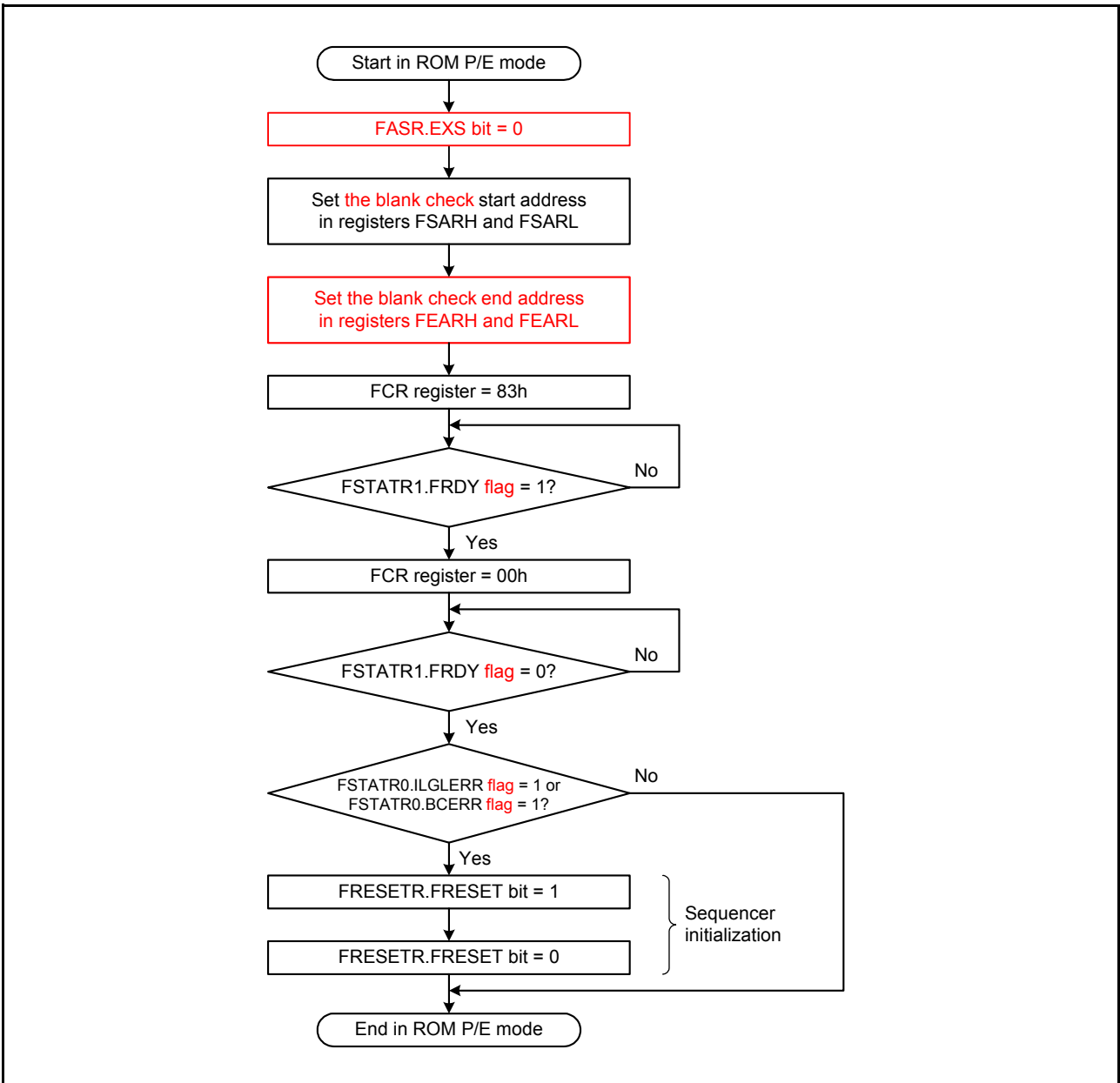


Figure 31.9 Procedure to Issue the Blank Check Command for the ROM

• Page 869 of 966

Figure 31.10 in (4) Start-Up Area Information Program/Access Window Information Program of 31.6.3 Software Command Usage is corrected as follows:

Before correction

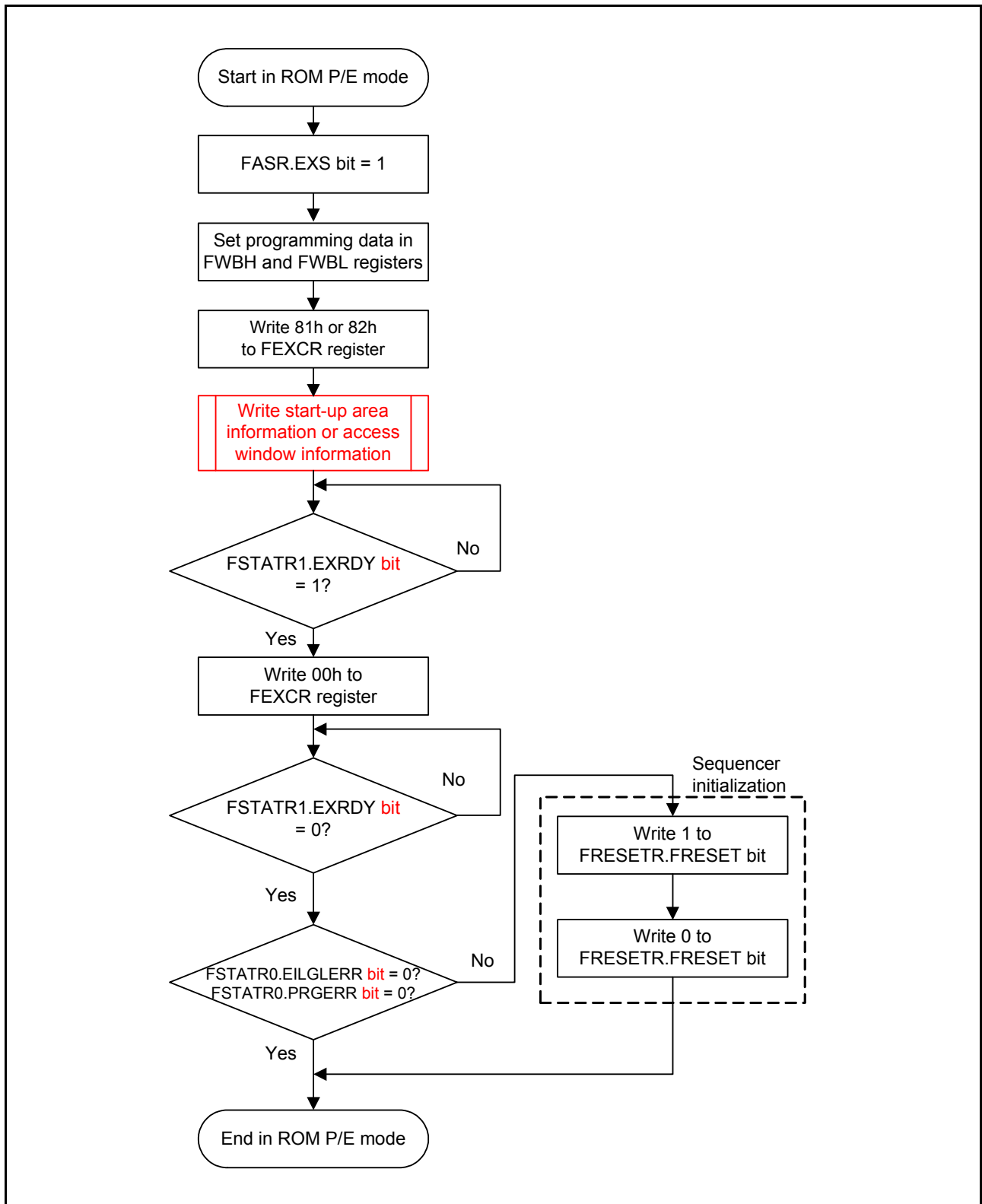


Figure 31.10 **Simple Flowchart of the Procedure for the Start-Up Area Information Program/Access Window Information Program**

After correction

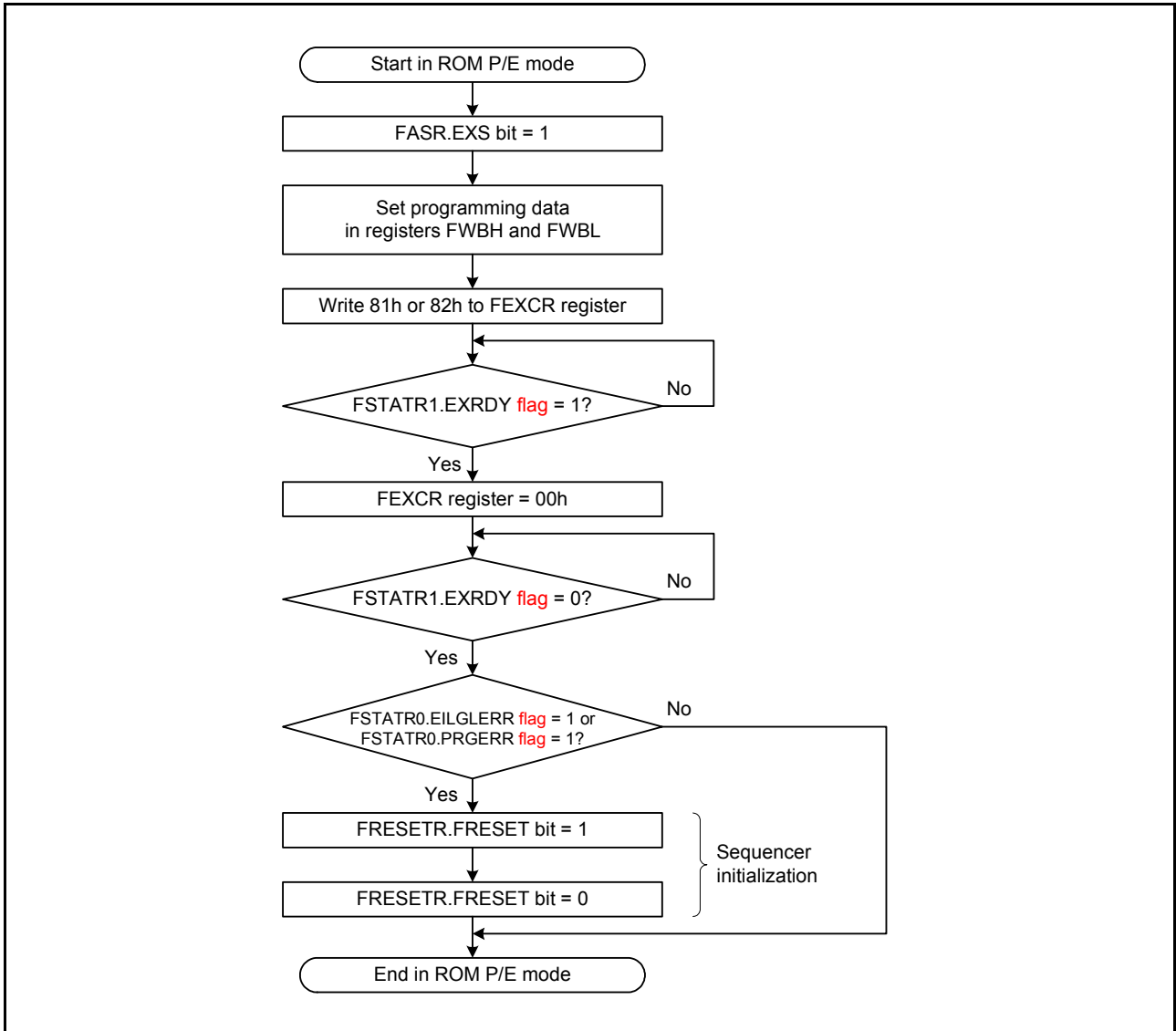


Figure 31.10 Procedure to Issue the Start-Up Area Information Program Command/Access Window Information Program Command