
Timing Commander Installation

This document provides instructions on how to install the Timing Commander software.

Contents

1. Required Files	1
2. Installation Instructions	2
3. Revision History	5

1. Required Files

The Timing Commander installation requires the following two files:

- TimingCommanderSetup.exe
- <PersonalityFile>.tcp

The .exe file will install the Timing Commander software. The ".tcp" file is the "Personality" file that contains the GUI for a specific device. For example, the file may be named "IDT8T79S818I-08_v0.6.tcp".

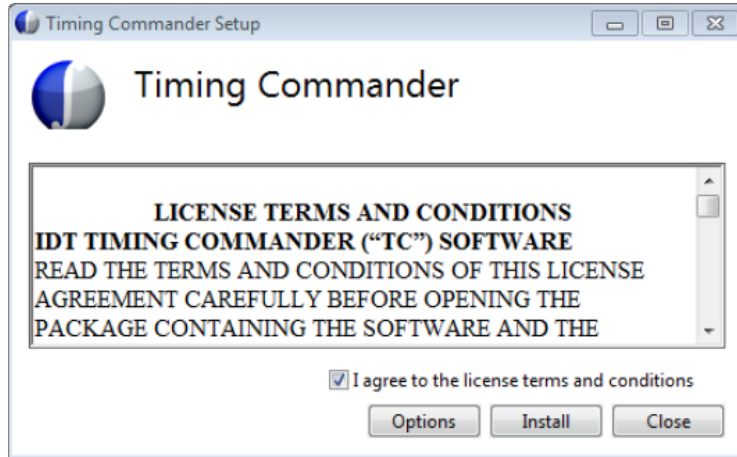
If internet access is not available, the following two items must be downloaded to a USB drive or burned to a CD and then installed onto the desired computer before completing the instructions in section 2. If internet access is available, these will automatically be installed.

- [Microsoft .NET Framework 4](#) (Standalone Installer)
- [SQL Compact 4](#)

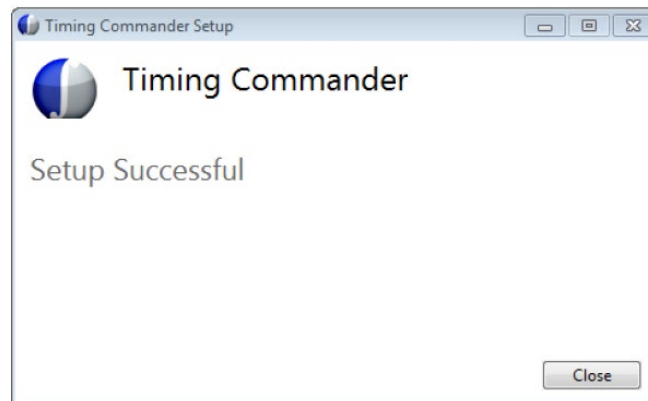
2. Installation Instructions

1. Unzip the Timing Commander installation file.
2. Execute "TimingCommanderSetup.exe".
3. Accept the "Terms and Conditions" and press "Install".

This will install Timing Commander, necessary hardware drivers, help files, and a "Timing Commander" shortcut in the Window Programs.



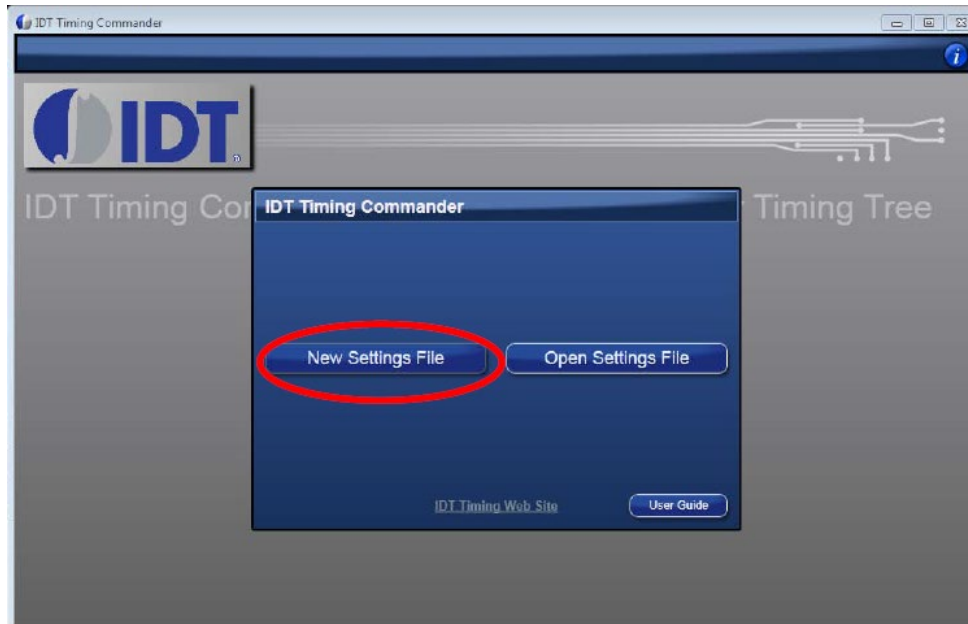
4. After the installation, the "Setup Successful" message will be displayed.



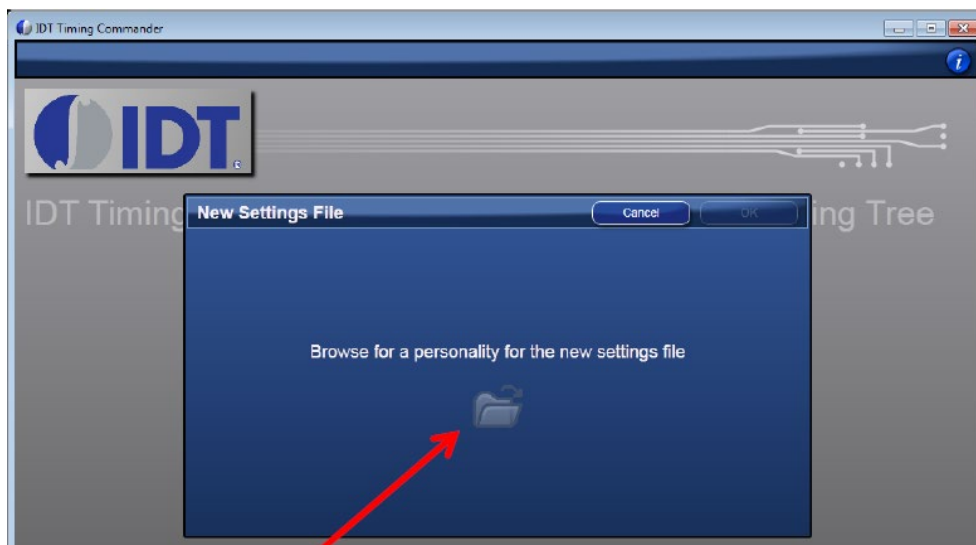
5. Go to Windows>Programs>IDT and click on "Timing Commander".

Timing Commander Installation Application Note

- On the first run, there will be two options, “New Settings File” and “Open Settings File”. Select “New Settings File”.



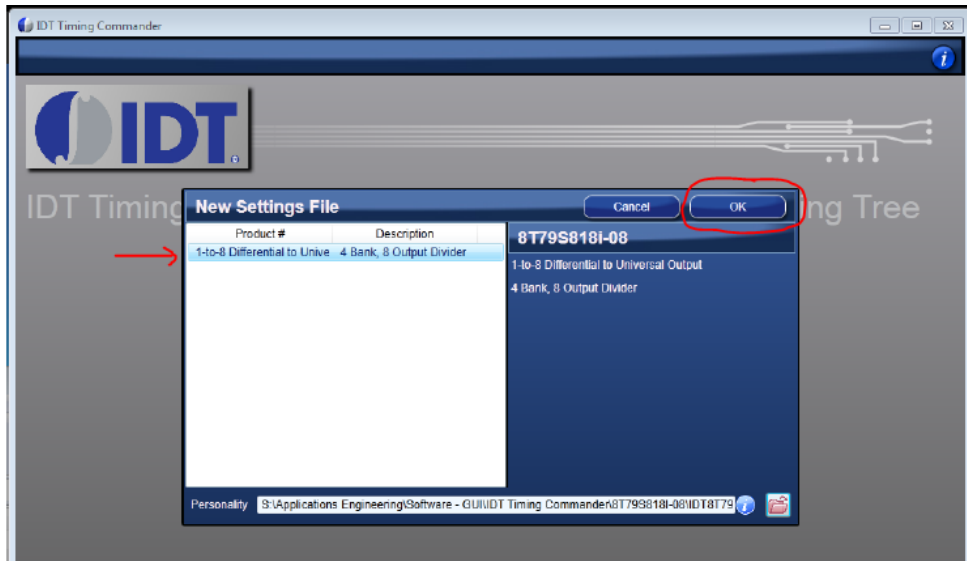
- The next screen will prompt for the “Personality” file.
- Click on the small folder to browse for the “.tcp” file.



- Locate and select the “.tcp” file then press “Open”.

Timing Commander Installation Application Note

10. The personality will now be listed under the “Product #” column. As more personalities are added, they will be visible in this location.
11. Select the personality to load (only one available on first run).
12. Press “OK” to load the GUI.



13. Connect the evaluation board to the PC with a USB cable.
14. The final step necessary in order to communicate with the evaluation board is to click the “Connect Chip” button at the top-right area of the GUI.



15. For additional help, click on “User Guide” on the start-up screen of Timing Commander.

3. Revision History

Revision	Date	Description
1.00	Mar 10, 2023	Initial release.

IMPORTANT NOTICE AND DISCLAIMER

RENESAS ELECTRONICS CORPORATION AND ITS SUBSIDIARIES (“RENESAS”) PROVIDES TECHNICAL SPECIFICATIONS AND RELIABILITY DATA (INCLUDING DATASHEETS), DESIGN RESOURCES (INCLUDING REFERENCE DESIGNS), APPLICATION OR OTHER DESIGN ADVICE, WEB TOOLS, SAFETY INFORMATION, AND OTHER RESOURCES “AS IS” AND WITH ALL FAULTS, AND DISCLAIMS ALL WARRANTIES, EXPRESS OR IMPLIED, INCLUDING, WITHOUT LIMITATION, ANY IMPLIED WARRANTIES OF MERCHANTABILITY, FITNESS FOR A PARTICULAR PURPOSE, OR NON-INFRINGEMENT OF THIRD-PARTY INTELLECTUAL PROPERTY RIGHTS.

These resources are intended for developers who are designing with Renesas products. You are solely responsible for (1) selecting the appropriate products for your application, (2) designing, validating, and testing your application, and (3) ensuring your application meets applicable standards, and any other safety, security, or other requirements. These resources are subject to change without notice. Renesas grants you permission to use these resources only to develop an application that uses Renesas products. Other reproduction or use of these resources is strictly prohibited. No license is granted to any other Renesas intellectual property or to any third-party intellectual property. Renesas disclaims responsibility for, and you will fully indemnify Renesas and its representatives against, any claims, damages, costs, losses, or liabilities arising from your use of these resources. Renesas' products are provided only subject to Renesas' Terms and Conditions of Sale or other applicable terms agreed to in writing. No use of any Renesas resources expands or otherwise alters any applicable warranties or warranty disclaimers for these products.

(Disclaimer Rev.1.01 Jan 2024)

Corporate Headquarters

TOYOSU FORESIA, 3-2-24 Toyosu,
Koto-ku, Tokyo 135-0061, Japan
www.renesas.com

Trademarks

Renesas and the Renesas logo are trademarks of Renesas Electronics Corporation. All trademarks and registered trademarks are the property of their respective owners.

Contact Information

For further information on a product, technology, the most up-to-date version of a document, or your nearest sales office, please visit www.renesas.com/contact-us/.