
[Upgrade to revision]

CS+ Utilities for the Real-time Operating Systems

(RI850V4 V2, RI600V4, RI78V4 V2, and RI600PX)

Outline

New versions of utilities to provide support by CS+ for the RI850V4 V2, RI600V4, RI78V4 V2, and RI600PX real-time operating systems (CS+ plug-ins for use with each operating system) will be released as shown below.

- Common to real-time OSeS from V3.02.01 to V3.03.00
- Sections dependent on RI850V4 V2 from V2.01.01 to V2.02.00
- Sections dependent on RI600V4 from V3.00.00 to V3.01.00
- Sections dependent on RI78V4 V2 from V2.00.00 to V2.01.00

1. Product and Versions to Be Updated

The OS-specific plug-ins are included with the respective operating systems listed below.

- (1) RI850V4 V2 utility
RI850V4 real-time OS for the RH850 family, V2.00.00 to V2.01.01
- (2) RI600V4 utility
RI600V4 real-time OS for the RX family, V1.01.00 to V1.04.00
- (3) RI78V4 V2 utility
RI78V4 real-time OS for the RL78 family, V2.00.00
- (4) RI600PX utility
RI600PX real-time OS for the RX family, V1.01.00 to V1.02.00

Note: The functionality under 2, Description of Revision, has been improved for the above items (1) to (3) in this revision.

Though these improvements will not affect item (4), the RI600PX utility, the notification of this update will be displayed for all of the above real-time OS products because of the portion of the revision that is common to the real-time operating systems.

2. Description of Revision

A description of the revision follows.

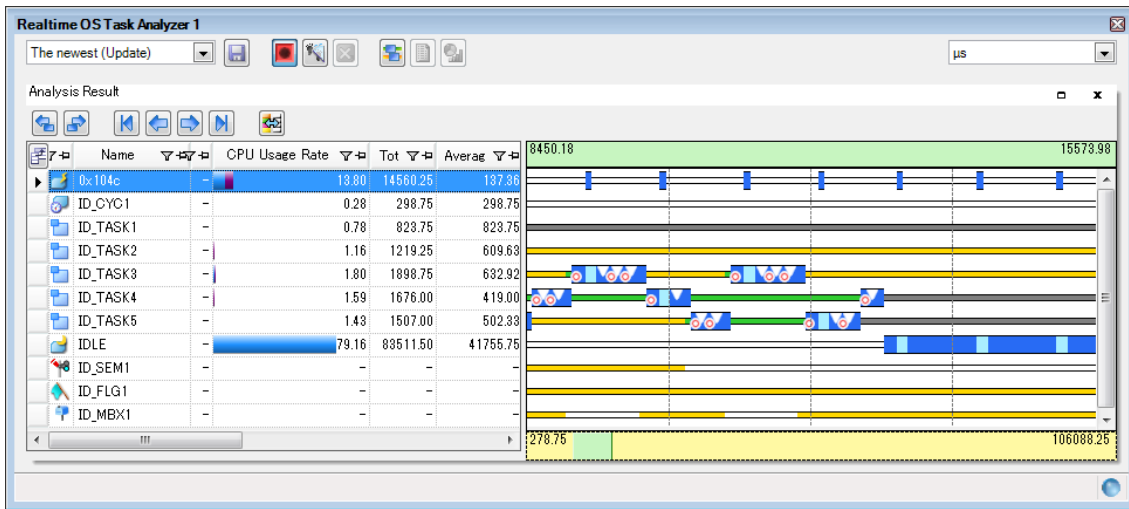
2.1 Improvements to Functionality

We have improved the following.

- Task analyzer

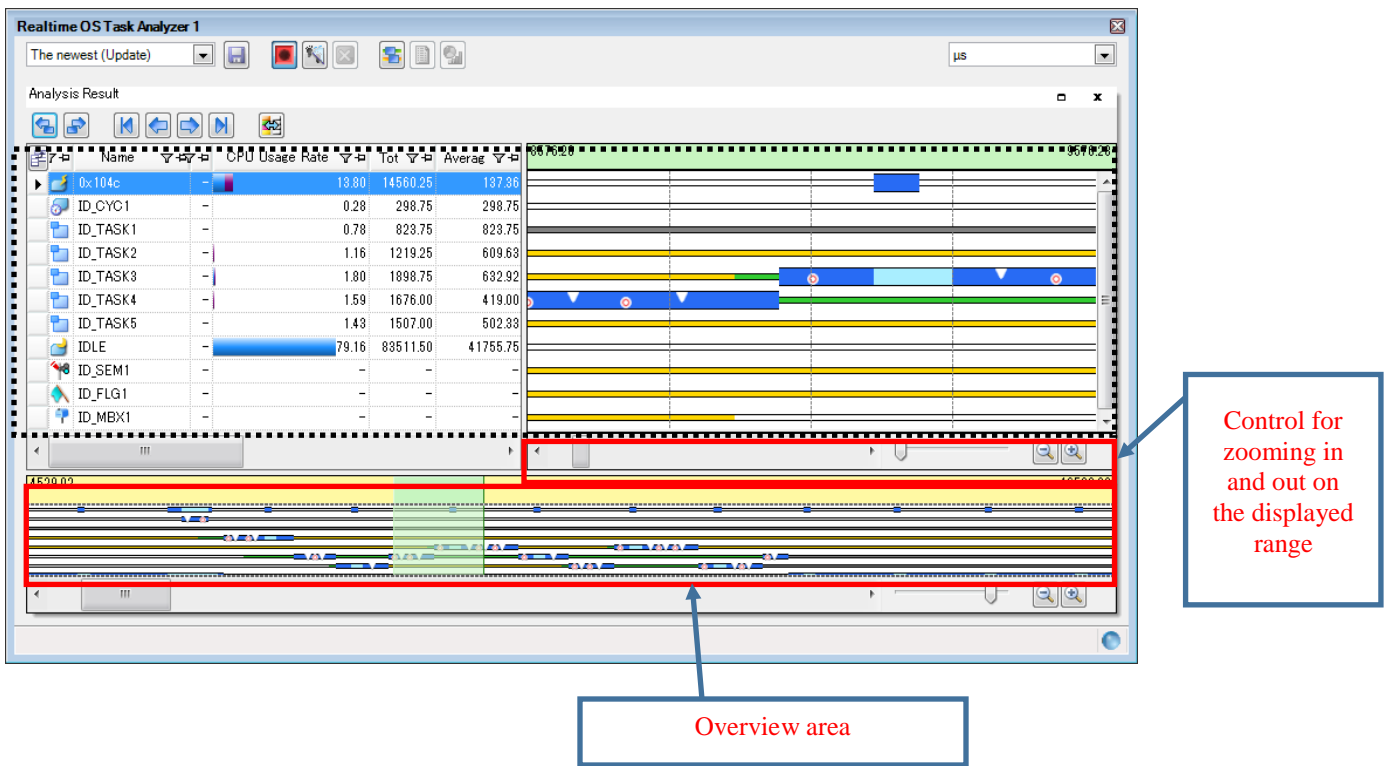
- (1) Addition of the ability to zooming in and out on the displayed range
- (2) Addition of an “overview area” so you can see the state of tracing over a wide range

Example of the display in the current utilities:



Example of the display after the improvement:

The parts of the window framed in red represent the added functionality.



Remark: Operation of the overview and the trace-chart area (enclosed by the broken lines) is interlinked: the area selected in the overview (shaded in green) will be displayed in the trace chart area.

3. Updating Your Product

If you are using any of the real-time OSEs for which the plug-in has been updated, an online update is available free of charge (the service will be launched on July 20).

Select "All Programs" → "Renesas Electronics CS+" from the start menu of Windows to start the update manager, and then proceed with updating.

Revision History

Rev.	Date	Description	
		Page	Summary
1.00	Jul. 01, 2016	-	First edition issued

TOYOSU FORESIA, 3-2-24 Toyosu, Koto-ku, Tokyo 135-0061 Japan
 Renesas Electronics Corporation

■Inquiry

<http://www.renesas.com/contact/>

Renesas Electronics has used reasonable care in preparing the information included in this document, but Renesas Electronics does not warrant that such information is error free. Renesas Electronics assumes no liability whatsoever for any damages incurred by you resulting from errors in or omissions from the information included herein.

The past news contents have been based on information at the time of publication.

Now changed or invalid information may be included. The URLs in the Tool News also may be subject to change or become invalid without prior notice.

All trademarks and registered trademarks are the property of their respective owners.