

ISL70062SEH, ISL73062SEH

SEE Test Report

Introduction

The intense proton and heavy ion environment encountered in space applications can cause a variety of Single Event Effects (SEE) in electronic circuitry, including Single Event Upset (SEU), Single Event Transient (SET), Single Event Functional Interrupt (SEFI), Single Event Latch-Up (SEL), Single Event Gate Rupture (SEGR), and Single Event Burnout (SEB). SEE can lead to system-level performance issues including disruption, degradation, and destruction. For predictable and reliable space system operation, individual electronic components should be characterized to determine their SEE response. This report discusses SEE testing results performed on the [ISL70062SEH](#) 10A, NMOS protection switch. This report also applies to the ISL73062SEH as the parts only differ in TID radiation assurance testing. The [ISL73062SEH](#) only sees 75krad(Si) of low dose rate (0.01rad(Si)/s) assurance testing, while the ISL70062SEH also sees assurance testing to 100krad(Si) at high dose rate (50-300rad(Si)/s).

Product Description

The ISL70062SEH and ISL73062SEH are radiation hardened protection switches featuring a low resistance NMOS switch and fixed slew rate controlled turn-on. These devices are capable of 10A continuous current, simple on/off logic control input, and reverse current protection to stop current from flowing toward the input when the output voltage increases above the input voltage. They also have a selectable internal 100Ω NMOS device to discharge the output when the switch is off. The discharge circuitry is active when DON input is high, and it is inactive when DON is low. The supply voltage V_{CC} can be from 3V to 5.5V and the switched voltage can be from 0V to $V_{CC} - 2V$. These parts are offered in 14 LD CDFP packages with the pinout displayed in [Figure 1](#).

The parts used for the testing described here were from lot 2CC8B wafer VKC8URW. The parts used for SEE testing did not see temperature testing because they did not have lids installed so as to allow irradiation.

The input to the switch (SWI) are Pins 1-5. The gate drive supply, VCC, is Pin 6. The switch output (SWO) are Pins 10-14. The control signal ON (switch command) is Pin 7, DON (discharge MOSFET control) is Pin 9, and ground (GND) is Pin 8.

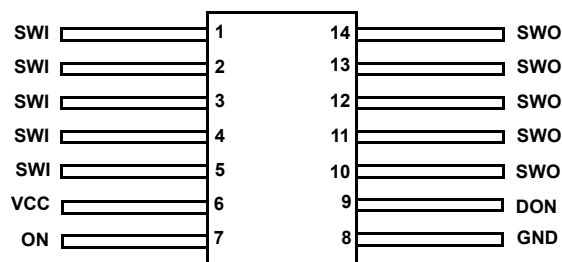


Figure 1. Pinout of the ISL70062SEH

Related Literature

For a full list of related documents, visit our website:

- [ISL70062SEH](#), [ISL73062SEH](#) device pages

1. SEE Testing

1.1 Objectives

The ISL70062SEH was tested to determine susceptibility to destructive single event effects (referred in the document as SEB to include SEL) and to characterize SET behavior over different operating conditions.

1.2 Facility

Testing was performed at the Texas A & M University (TAMU) Radiation Effects Facility of the Cyclotron Institute heavy ion facility. This facility is coupled to a K500 super-conducting cyclotron, which is capable of generating a wide range of particle beams with the various energy, flux, and fluence levels needed for advanced radiation testing. Further details on the test facility can be found on their [website](#). The Devices Under Test (DUTs) were located in air outside an Aramica window for the ion beam. Ion Linear Energy Transfer (LET) values are quoted at the DUT surface. Signals were communicated to and from the DUT test fixture through 20 foot cables connecting to the control room. The testing reported here was conducted on March 31 and April 1, 2019.

1.3 Set-up

For SEE testing the general circuit configuration in [Figure 2](#) was used. Kelvin connections were provided to both high current terminals, SWI and SWO, so that accurate voltages could be measured at the unit even under high current tests. V_{CC} , ON, and DON were brought out to be accessible.

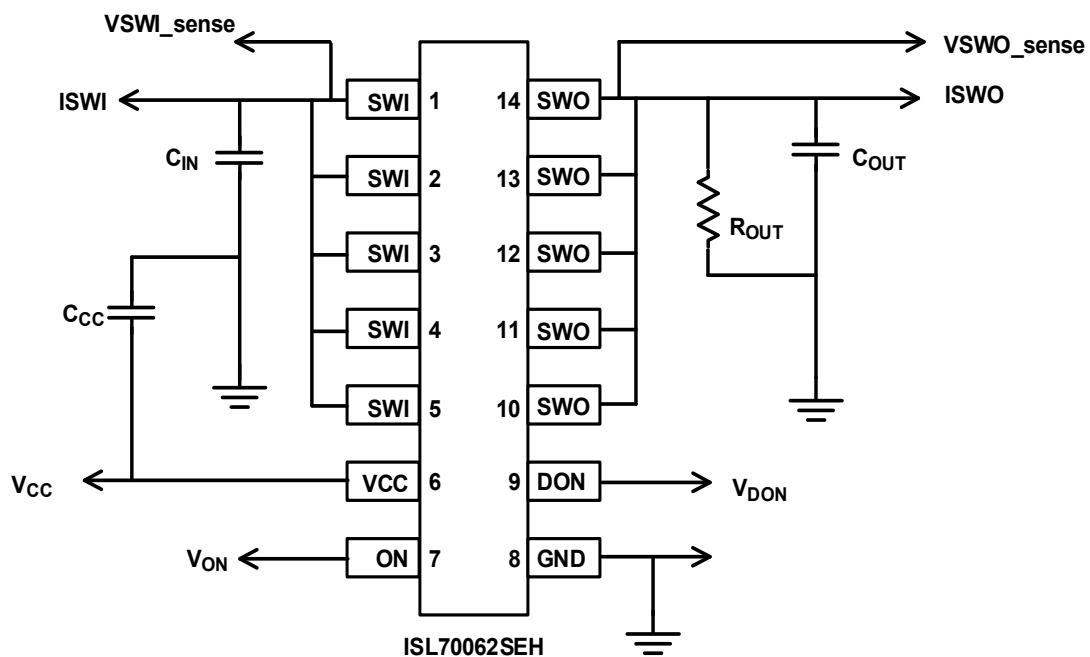


Figure 2. SEE Testing Configuration

For destructive SEE testing (termed SEB but to include SEL) three bias configurations were tested. All three configurations were without R_{OUT} or C_{OUT} components. This allowed currents of the DUT to be measured without contributions from external components. In the first configuration, the SWI, ON, and DON pins were provided with the V_{CC} test voltage so that the switch was on but unloaded (open SWO). In the second configuration, the output (SWO) was remotely loaded with a $1k\Omega$ resistor and the switch control (ON) was provided with a 100Hz square wave between 0V and 5V. For the third configuration, the input (SWI) and the ON pin had a test voltage applied. The output (SWO) had a 12A electronic current sink applied to it. This last case necessitated the Kelvin connection to SWI so that the voltage at the DUT could be monitored under high current conditions. In all cases the V_{CC} voltage was at the test value and the V_{SWI} voltage was set to 2V below V_{CC} . All the destructive SEE testing was done with a case temperature of $125^{\circ}\text{C} \pm 10^{\circ}\text{C}$. This testing required heating except for the high current condition which self-heated to above 125°C .

For the SET testing the external components R_{OUT} and C_{OUT} were populated with $1k\Omega$ and $1\mu F$. Four configurations were tested for SET. The first two conditions were with ON and DON pins biased at $0.4V$ (maximal logic low condition) and V_{CC} at both $3.0V$ and $5.5V$ with V_{SWI} set to $2V$ lower. Because the switch was biased off, the SET would indicate a momentary switch to the on condition. The other two SET configurations had ON and DON at $1.2V$ and an additional 1Ω load on V_{SWO} . In this condition, SET on V_{SWO} indicated cases where the switch tended toward an off condition.

2. Results

2.1 ISL70062SEH Destructive SEE Testing with $LET = 86MeV \cdot cm^2/mg$

Destructive SEE testing was done with V_{CC} supply voltages of $6.2V$, $6.5V$, and $6.7V$. The switch voltage (V_{SWI}) was set to be $V_{CC} - 2V$. The first two configurations of the destructive SEE testing were done on two parts at a time to minimize beam time. The parts were mounted so that both were inside the ion beam diameter. The parts were biased and monitored separately during the testing. Only the high current condition, $12A$, was tested one part at a time to mitigate the thermal conditions. For the high current testing the package thermal pad on the bottom was soldered to the board copper to provide better heat sinking.

Destructive SEE testing of the ISL70062SEH proceeded with monitoring six currents before and after irradiation. A description of the six current measurements is presented in [Table 1](#). These monitored all three destructive SEE test configurations:

- Off switch
- 100Hz toggled switch into $1k\Omega$
- On switch with $12A$ load current.

Measurements of each current were made prior to irradiation and again after each irradiation. The currents did not move more than -6% , and this was for the IDON where that change was about the resolution of the measurement. So, it was concluded that there was no indication of permanent damage through all forty-eight irradiations done (four parts, three configurations, three voltages).

Table 1. The Six Current Measurements Made on Either Side of Each Irradiation to Monitor for Any Damaging SEE.

Measurement	VCC	VON	VDON	VSWI	VSWO
IVCC	5V	5V	5V	3V	Open
ISWI	5V	5V	5V	3V	Open
ISWI	5V	Open	Open	3V	0V
ISWO	5V	Open	Open	3V	3V
ISWO	5V	Open	5V	3V	3V
IDON	5V	Open	5V	3V	3V

In addition to the monitoring of the six currents described, the V_{CC} supply current during irradiation was continuously monitored and logged. The current monitor logs for V_{CC} were reviewed after the testing. The results for a bias of $6.2V$ and $6.5V$ and the switch off were comparable and exhibited isolated, small current events. For the condition of the switch off at $V_{CC} = 6.5V$, the nominal current on V_{CC} was about $24\mu A$, as shown in [Figure 3 on page 4](#). In the 4×10^7 ion/cm² distributed over four devices there were two events that led to instantaneously higher currents of about $45\mu A$. These events represent a nominal cross section of $5\mu m^2$. At $6.7V$ for the off condition, the nature of the events changed as shown in [Figure 4 on page 5](#). In this case, three events produced current events of over $1mA$, while four events of less than $50\mu A$ were also recorded. The highest events were over $10mA$. It is important to note that these events did not persist, and the currents immediately returned to the nominal values. The high currents are indicative of a high gain process associated with the SEE such as could potentially lead to SEL, but the immediate return to nominal currents indicates that the process did not achieve a latching state, which probably indicates conditions that are on the threshold of SEL. The nominal cross section for events at $6.7V$ was only $20\mu m^2$ for LET of $86MeV \cdot cm^2/mg$.

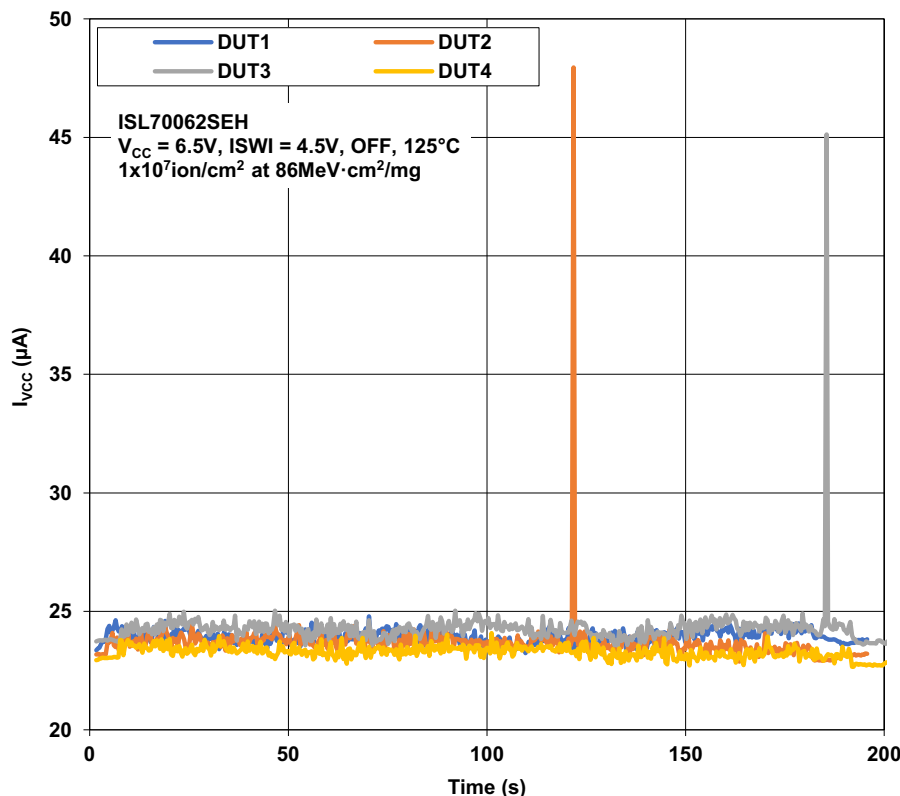


Figure 3. VCC Current Logs for $V_{CC} = 6.5V$ and $V_{SWI} = 4.5V$ with the Switch Off

The currents registered for the case of a 100Hz toggled switch into a $1k\Omega$ load were significantly higher than for the off-switch state at approximately $160\mu A$. There were no current transient events on the four parts tested to $1 \times 10^7 \text{ ion/cm}^2$ at $V_{CC} = 6.7V$. This is important as no events pushing the current to 1mA or above were captured. In fact, there were no current deviations of even $20\mu A$ as noted at 6.5V for the off state.

The on condition of the switch with 12A flowing provides another view of the SEL topic. The currents registered about $24\mu A$ and did not exhibit any current spikes. It should be noted that there were a couple of different testing conditions for this 12A case as compared to the other two configurations. First, internal heating of the part took it up to $125^{\circ}C$ without any external heaters as were used for the other two destructive SEE test conditions. A second difference was the use of shields in the irradiations to prevent double events in redundant circuits from leading to an abrupt interruption in the current and a resulting transient voltage due to parasitic inductance that could damage the part. The shields were two on the left edge of the parts and two on the right edge so that over the four parts the entire circuit received irradiation.

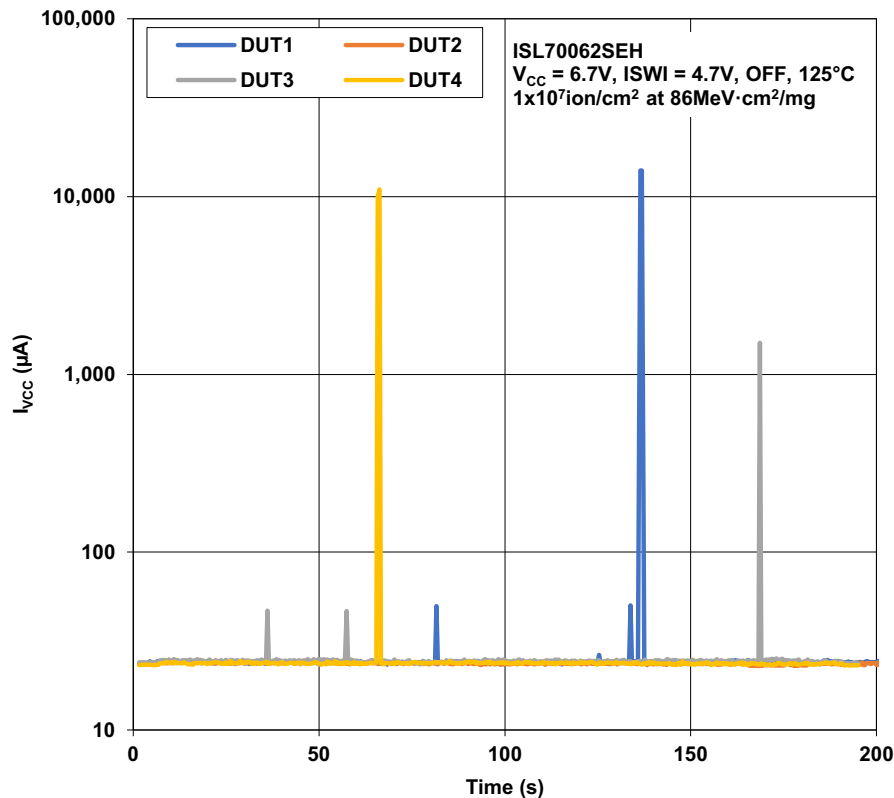


Figure 4. VCC Current Logs for $V_{CC} = 6.7V$ and $V_{SWI} = 4.7V$ with the Switch Off

From the testing it was concluded that the ISL70062SEH did not suffer any SEL or any damaging effects (SEB) from irradiation with normal incidence gold ($86 \text{ MeV} \cdot \text{cm}^2/\text{mg}$) while operating at supply voltages up to $6.7V$ and at case temperature of $125^{\circ}C$.

2.2 ISL70062SEH Single Event Transient (SET) Testing

Single event transient testing of the ISL70062SEH was done under four bias conditions. Testing was done with the supply voltage V_{CC} at both $3.0V$ and $5.5V$ to span the operating range. The switch input voltage (V_{SWI}) was set to $1V$ and $3.0V$, respectively. At each voltage, the part was tested in the off condition with both ON and DON biased at $0.4V$, the maximum voltage for a logic low on those inputs. The parts were also tested in the on condition with both ON and DON at $1.2V$, the minimum voltage for a logic high on those inputs. The output V_{SWO} was loaded with $1k\Omega$ when the switch was off and with 1Ω when the switch was on. In both cases the V_{SWO} had a $1\mu F$ capacitor. The 1Ω set the current to $1A$ and $3A$ at the two voltage conditions for the switch in the conducting state.

The parts tested for SET included both parts shielded on the left edge (four parts shielded on V_{SWI} side) of the die and parts shielded on the right edge (four parts shielded on V_{SWO} side) of the die. These shields covered redundant channels of the ON, UVLO, and RCP circuitry and eliminated the chance of double ion events defeating those redundant circuits. The two non-overlapping shields ensured that all the circuit was exposed to ion flux when results from both shields are considered together.

During the SET testing, the V_{SWO} of the part was monitored with an oscilloscope set to both trigger and store a trace on a $\pm 10mV$ deviation on V_{SWO} . Another oscilloscope was set to trigger and store events when V_{SWO} fell through $0.5V$. The two oscilloscopes allowed real-time counting of complete shutdown events (triggering at $0.5V$), and the calculation of small events by the difference in the counts collected.

No SET to the $\pm 10mV$ criteria on V_{SWO} were captured. This means that when the switch was off there were no events that led to more than $10mV$ of output with a $1k\Omega$ load resistor ($< 10\mu A$). For the on state with a 1Ω load, the less than $10mV$ deviation means that no current change of more than $10mA$ occurred.

3. Discussion and Conclusions

The ISL70062SEH proved to be immune to SEL and destructive SEE when tested with a supply voltage at $V_{CC} = 6.7V$ and $V_{SWI} = 4.7V$, at a case temperature of $125^{\circ}C$, and irradiated with normal incidence gold for an LET of $86MeV \cdot cm^2/mg$ to a fluence of $1 \times 10^7 ion/cm^2$. A total of twelve parts were tested, four each under three different biasing circumstances. The first configuration looked specifically for signs of SEL in the operating V_{CC} current of an off switch. The second configuration looked at a 100Hz switching case with a lightly loaded output ($1k\Omega$). The third configuration was a high current case with the output supplying 12A. None of the testing resulted in any sign of SEL or damage in the six monitored currents (see [Table 1 on page 3](#)).

SET testing did not yield any events with irradiation by normal incidence gold ($86MeV \cdot cm^2/mg$). SET were counted for any deviation in V_{SWO} by $\pm 10mV$. Conditions tested were both the switch off with a $1k\Omega$ load and with the switch on and a 1Ω load at both $V_{CC} = 3V$, $V_{SWI} = 1V$ and $V_{CC} = 5.5V$, $V_{SWI} = 3V$. Four parts were tested to each condition to a fluence of $1 \times 10^7 ion/cm^2$ for each irradiation.

4. Revision History

Rev.	Date	Description
1.00	Aug.12.19	Initial release

Notice

1. Descriptions of circuits, software and other related information in this document are provided only to illustrate the operation of semiconductor products and application examples. You are fully responsible for the incorporation or any other use of the circuits, software, and information in the design of your product or system. Renesas Electronics disclaims any and all liability for any losses and damages incurred by you or third parties arising from the use of these circuits, software, or information.
2. Renesas Electronics hereby expressly disclaims any warranties against and liability for infringement or any other claims involving patents, copyrights, or other intellectual property rights of third parties, by or arising from the use of Renesas Electronics products or technical information described in this document, including but not limited to, the product data, drawings, charts, programs, algorithms, and application examples.
3. No license, express, implied or otherwise, is granted hereby under any patents, copyrights or other intellectual property rights of Renesas Electronics or others.
4. You shall not alter, modify, copy, or reverse engineer any Renesas Electronics product, whether in whole or in part. Renesas Electronics disclaims any and all liability for any losses or damages incurred by you or third parties arising from such alteration, modification, copying or reverse engineering.
5. Renesas Electronics products are classified according to the following two quality grades: "Standard" and "High Quality". The intended applications for each Renesas Electronics product depends on the product's quality grade, as indicated below.
 - "Standard": Computers; office equipment; communications equipment; test and measurement equipment; audio and visual equipment; home electronic appliances; machine tools; personal electronic equipment; industrial robots; etc.
 - "High Quality": Transportation equipment (automobiles, trains, ships, etc.); traffic control (traffic lights); large-scale communication equipment; key financial terminal systems; safety control equipment; etc.Unless expressly designated as a high reliability product or a product for harsh environments in a Renesas Electronics data sheet or other Renesas Electronics document, Renesas Electronics products are not intended or authorized for use in products or systems that may pose a direct threat to human life or bodily injury (artificial life support devices or systems; surgical implantations; etc.), or may cause serious property damage (space system; undersea repeaters; nuclear power control systems; aircraft control systems; key plant systems; military equipment; etc.). Renesas Electronics disclaims any and all liability for any damages or losses incurred by you or any third parties arising from the use of any Renesas Electronics product that is inconsistent with any Renesas Electronics data sheet, user's manual or other Renesas Electronics document.
6. When using Renesas Electronics products, refer to the latest product information (data sheets, user's manuals, application notes, "General Notes for Handling and Using Semiconductor Devices" in the reliability handbook, etc.), and ensure that usage conditions are within the ranges specified by Renesas Electronics with respect to maximum ratings, operating power supply voltage range, heat dissipation characteristics, installation, etc. Renesas Electronics disclaims any and all liability for any malfunctions, failure or accident arising out of the use of Renesas Electronics products outside of such specified ranges.
7. Although Renesas Electronics endeavors to improve the quality and reliability of Renesas Electronics products, semiconductor products have specific characteristics, such as the occurrence of failure at a certain rate and malfunctions under certain use conditions. Unless designated as a high reliability product or a product for harsh environments in a Renesas Electronics data sheet or other Renesas Electronics document, Renesas Electronics products are not subject to radiation resistance design. You are responsible for implementing safety measures to guard against the possibility of bodily injury, injury or damage caused by fire, and/or danger to the public in the event of a failure or malfunction of Renesas Electronics products, such as safety design for hardware and software, including but not limited to redundancy, fire control and malfunction prevention, appropriate treatment for aging degradation or any other appropriate measures. Because the evaluation of microcomputer software alone is very difficult and impractical, you are responsible for evaluating the safety of the final products or systems manufactured by you.
8. Please contact a Renesas Electronics sales office for details as to environmental matters such as the environmental compatibility of each Renesas Electronics product. You are responsible for carefully and sufficiently investigating applicable laws and regulations that regulate the inclusion or use of controlled substances, including without limitation, the EU RoHS Directive, and using Renesas Electronics products in compliance with all these applicable laws and regulations. Renesas Electronics disclaims any and all liability for damages or losses occurring as a result of your noncompliance with applicable laws and regulations.
9. Renesas Electronics products and technologies shall not be used for or incorporated into any products or systems whose manufacture, use, or sale is prohibited under any applicable domestic or foreign laws or regulations. You shall comply with any applicable export control laws and regulations promulgated and administered by the governments of any countries asserting jurisdiction over the parties or transactions.
10. It is the responsibility of the buyer or distributor of Renesas Electronics products, or any other party who distributes, disposes of, or otherwise sells or transfers the product to a third party, to notify such third party in advance of the contents and conditions set forth in this document.
11. This document shall not be reprinted, reproduced or duplicated in any form, in whole or in part, without prior written consent of Renesas Electronics.
12. Please contact a Renesas Electronics sales office if you have any questions regarding the information contained in this document or Renesas Electronics products.

(Note1) "Renesas Electronics" as used in this document means Renesas Electronics Corporation and also includes its directly or indirectly controlled subsidiaries.

(Note2) "Renesas Electronics product(s)" means any product developed or manufactured by or for Renesas Electronics.

(Rev.4.0-1 November 2017)

Corporate Headquarters

TOYOSU FORESIA, 3-2-24 Toyosu,
Koto-ku, Tokyo 135-0061, Japan
www.renesas.com

Contact Information

For further information on a product, technology, the most up-to-date version of a document, or your nearest sales office, please visit:
www.renesas.com/contact/

Trademarks

Renesas and the Renesas logo are trademarks of Renesas Electronics Corporation. All trademarks and registered trademarks are the property of their respective owners.