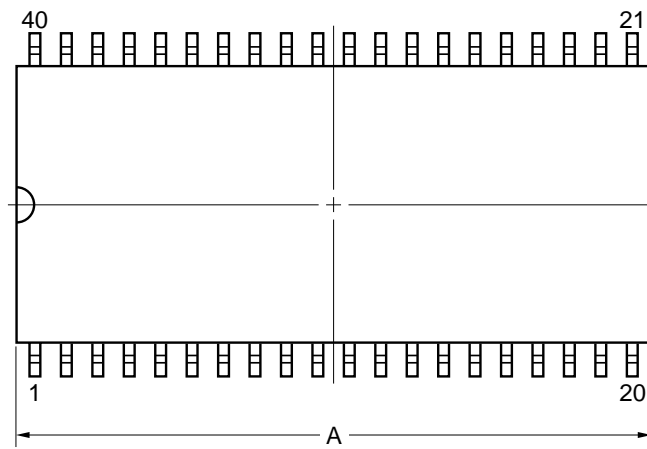
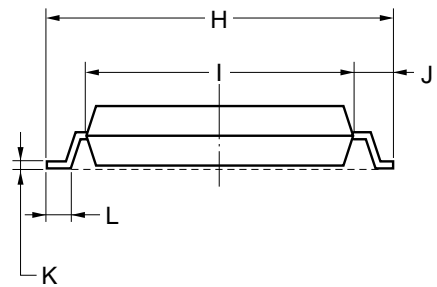
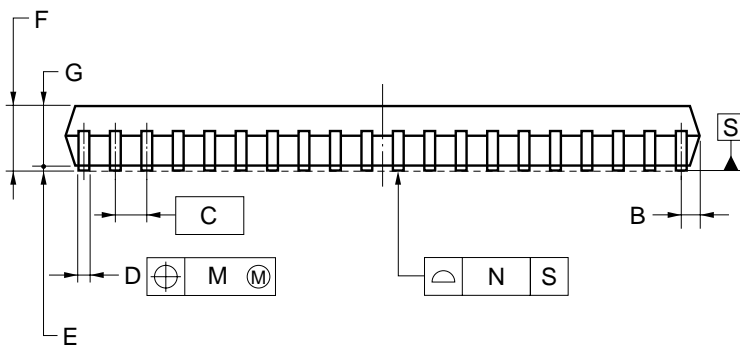
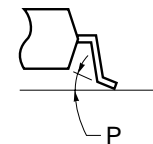


40-PIN PLASTIC SOP (13.34 mm (525))



detail of lead end



NOTE

Each lead centerline is located within 0.12 mm of its true position (T.P.) at maximum material condition.

ITEM	MILLIMETERS
A	25.69 MAX.
B	1.0 MAX.
C	1.27 (T.P.)
D	0.40±0.10
E	0.2±0.1
F	2.8 MAX.
G	2.4±0.1
H	14.1±0.3
I	11.24±0.1
J	1.4±0.2
K	0.15 ^{+0.10} _{-0.05}
L	0.8±0.2
M	0.12
N	0.10
P	5°±5°

P40GW-50-525A-1