

Renesas Flash Programmer V3.02

Flash memory programming software

User's Manual

All information contained in these materials, including products and product specifications, represents information on the product at the time of publication and is subject to change by Renesas Electronics Corp. without notice. Please review the latest information published by Renesas Electronics Corp. through various means, including the Renesas Electronics Corp. website (<http://www.renesas.com>).

Notice

1. Descriptions of circuits, software and other related information in this document are provided only to illustrate the operation of semiconductor products and application examples. You are fully responsible for the incorporation of these circuits, software, and information in the design of your equipment. Renesas Electronics assumes no responsibility for any losses incurred by you or third parties arising from the use of these circuits, software, or information.
2. Renesas Electronics has used reasonable care in preparing the information included in this document, but Renesas Electronics does not warrant that such information is error free. Renesas Electronics assumes no liability whatsoever for any damages incurred by you resulting from errors in or omissions from the information included herein.
3. Renesas Electronics does not assume any liability for infringement of patents, copyrights, or other intellectual property rights of third parties by or arising from the use of Renesas Electronics products or technical information described in this document. No license, express, implied or otherwise, is granted hereby under any patents, copyrights or other intellectual property rights of Renesas Electronics or others.
4. You should not alter, modify, copy, or otherwise misappropriate any Renesas Electronics product, whether in whole or in part. Renesas Electronics assumes no responsibility for any losses incurred by you or third parties arising from such alteration, modification, copy or otherwise misappropriation of Renesas Electronics product.
5. Renesas Electronics products are classified according to the following two quality grades: "Standard" and "High Quality". The recommended applications for each Renesas Electronics product depends on the product's quality grade, as indicated below.
"Standard": Computers; office equipment; communications equipment; test and measurement equipment; audio and visual equipment; home electronic appliances; machine tools; personal electronic equipment; and industrial robots etc.
"High Quality": Transportation equipment (automobiles, trains, ships, etc.); traffic control systems; anti-disaster systems; anti-crime systems; and safety equipment etc.

Renesas Electronics products are neither intended nor authorized for use in products or systems that may pose a direct threat to human life or bodily injury (artificial life support devices or systems, surgical implantations etc.), or may cause serious property damages (nuclear reactor control systems, military equipment etc.). You must check the quality grade of each Renesas Electronics product before using it in a particular application. You may not use any Renesas Electronics product for any application for which it is not intended. Renesas Electronics shall not be in any way liable for any damages or losses incurred by you or third parties arising from the use of any Renesas Electronics product for which the product is not intended by Renesas Electronics.
6. You should use the Renesas Electronics products described in this document within the range specified by Renesas Electronics, especially with respect to the maximum rating, operating supply voltage range, movement power voltage range, heat radiation characteristics, installation and other product characteristics. Renesas Electronics shall have no liability for malfunctions or damages arising out of the use of Renesas Electronics products beyond such specified ranges.
7. Although Renesas Electronics endeavors to improve the quality and reliability of its products, semiconductor products have specific characteristics such as the occurrence of failure at a certain rate and malfunctions under certain use conditions. Further, Renesas Electronics products are not subject to radiation resistance design. Please be sure to implement safety measures to guard them against the possibility of physical injury, and injury or damage caused by fire in the event of the failure of a Renesas Electronics product, such as safety design for hardware and software including but not limited to redundancy, fire control and malfunction prevention, appropriate treatment for aging degradation or any other appropriate measures. Because the evaluation of microcomputer software alone is very difficult, please evaluate the safety of the final products or systems manufactured by you.
8. Please contact a Renesas Electronics sales office for details as to environmental matters such as the environmental compatibility of each Renesas Electronics product. Please use Renesas Electronics products in compliance with all applicable laws and regulations that regulate the inclusion or use of controlled substances, including without limitation, the EU RoHS Directive. Renesas Electronics assumes no liability for damages or losses occurring as a result of your noncompliance with applicable laws and regulations.
9. Renesas Electronics products and technology may not be used for or incorporated into any products or systems whose manufacture, use, or sale is prohibited under any applicable domestic or foreign laws or regulations. You should not use Renesas Electronics products or technology described in this document for any purpose relating to military applications or use by the military, including but not limited to the development of weapons of mass destruction. When exporting the Renesas Electronics products or technology described in this document, you should comply with the applicable export control laws and regulations and follow the procedures required by such laws and regulations.
10. It is the responsibility of the buyer or distributor of Renesas Electronics products, who distributes, disposes of, or otherwise places the product with a third party, to notify such third party in advance of the contents and conditions set forth in this document, Renesas Electronics assumes no responsibility for any losses incurred by you or third parties as a result of unauthorized use of Renesas Electronics products.
11. This document may not be reproduced or duplicated in any form, in whole or in part, without prior written consent of Renesas Electronics.
12. Please contact a Renesas Electronics sales office if you have any questions regarding the information contained in this document or Renesas Electronics products, or if you have any other inquiries.

(Note 1) "Renesas Electronics" as used in this document means Renesas Electronics Corporation and also includes its majority-owned subsidiaries.

(Note 2) "Renesas Electronics product(s)" means any product developed or manufactured by or for Renesas Electronics.

How to Use This Manual

1. Purposes and Target Readers

The purpose of this manual is to give users an understanding of the basic specifications and correct use of the Renesas Flash Programmer. This manual is intended for users who are using the flash programmer in designing and developing a system that employs a Renesas Electronics microcontroller equipped with on-chip flash memory.

It is assumed that the readers of this manual have a basic knowledge of microcontrollers and Windows, and some knowledge of electrical and logic circuits.

Use this software after sufficiently confirming the manual of the microcontroller in use.

2. Conventions

- Note: Footnote for item marked with “Note” in the text.
- Caution: Information requiring particular attention
- Remark: Supplementary information
- Numeral representations: Binary ... xxxx or xxxxB
Decimal ... xxxx
Hexadecimal ... 0xXXXX or xxxxH
- “ ”: Any character or item on the screen that can be selected or input
- : Name of a button
- []: Name of a command, dialog box, tabbed page, option, or area on the screen

3. Terminology

The meanings of the terms used in the Renesas Flash Programmer manual are as follows.

(1/2)

Term	Meaning
RFP	Abbreviation of "Renesas Flash Programmer", software for programming flash memory
E1/E20/E2/E2 Lite	Abbreviation of "the E1, E20, E2, or E2 emulator Lite"
Tool used	General term for the tool used by the customer, whether an E1, E20, E2, or E2 Lite.
MCU	Abbreviation of "microcontroller unit"
Target MCU	The Renesas Electronics MCU with on-chip flash memory which is in use by the user
Target system	User-designed board on which the target MCU is mounted
Input clock	A clock from an oscillator or a resonator which is externally input to the target MCU
Project file	Project files hold the data required to write programs. In the RFP, a project file holds the settings related to the programming environment, such as target MCU settings and command option specifications. Project files have the filename extension *.rpj.
Parameter file	Parameter files include information required to program the flash memory of the target MCU, and are created by acquiring information from the MCU. Parameter files have the extension *.fcf.
ID code	Authentication code used in flash programming and in on-chip debugging. For details, refer to the user's manual of the MCU.
Lock bit	One of the safety functions of the MCU. For details, refer to the user's manual of the MCU.
HEX file	Program file without flash option data
RPI file	RPI files are image files generated by the RFP that combine usable HEX files and flash options data.
Program file	<p>"Program file" refers to a file that contains a program to be written to the MCU. The RFP supports the following program file formats.</p> <ul style="list-style-type: none"> a. HEX files in Intel HEX format b. HCUHEX files in Intel HEX format c. HEX files in Motorola S format d. HCUHEX files in Motorola S format e. RPI files in RPI format <ul style="list-style-type: none"> • Refer to section 1.5, Formats of Program Files. • The only supported character code is ASCII (one byte). Unicode (two bytes) is not supported.
COMx	<p>COMx is a serial interface port of the host PC.</p> <p>When writing data to the target system by using a serial interface of the host PC, select COMx as the tool to be used. Any value from 1 to 256 can be specified for x.</p>

Term	Meaning
USB Direct	USB Direct is a method of writing to the MCU in the USB boot mode by using the USB interface port of the host PC.
FINE	FINE is a single- or dual-line communications interface operating through the FINE pin or pins of an MCU. Some of our MCUs support writing via single line FINE.
ID authentication mode	One of the security functions of the MCU. Connection of the flash programmer is protected by ID authentication.
Command protection mode	A security function of the MCU. Execution of a command is restricted; e.g., the execution of erase or other commands can be prohibited. For details on operations for the setting of individual security functions, refer to the user's manual of the MCU.
OTP	A security function of the MCU. For details, refer to the user's manual of the MCU.
Access window (AW)	This is also referred to as the "flash shield window". The specified range is selected as the access window (and window area), and functionality in other ranges is restricted to a degree which depends on the operating mode. For details, refer to the user's manual of the MCU.
Flash options	Flash options are settings which determine the state after the MCU is reset, and is a general term for settings which must be specified separately from the HEX file.

4. Related Documents

When using this manual, also refer to the following documents. The related documents indicated in this publication may include preliminary versions. However, preliminary versions are not marked as such.

Documents related to development tools (user's manual)

Document Name	Document Number
Renesas Flash Programmer V3.02 User's Manual	This manual
E1/E20 Emulator User's Manual	R20UT0398E
E2 Emulator RTE0T00020KCE00000R User's Manual	R20UT3538E
E2 Emulator Lite RTE0T0002LKCE00000R User's Manual	R20UT3240E

Caution: The related documents listed above are subject to change without notice.

Be sure to use the latest version of each document in design, etc.

5. Replacing Terms

Some terms in this manual should be replaced as shown in the table below, depending on the MCU to be used.

- When an RX100, RX200, RX64x, or RX71x is to be used:

Term in This Manual	To be Replaced with
USB Direct	USB interface mode
Get Flash options	Access window read
Set Security	Access window program

- When an RL78 is to be used:

Term in This Manual	To be Replaced with
Access window (AW)	Flash shield window

All trademarks and registered trademarks are the property of their respective owners.

CONTENTS

1. Overview.....	9
1.1 Features.....	9
1.2 Supported Microcontrollers	9
1.3 System Overview.....	10
1.3.1 Connection with the Target System.....	10
1.4 Operating Environment.....	11
1.4.1 Hardware Environment.....	11
1.4.2 Software Environment.....	11
1.5 Formats of Program Files	12
1.5.1 HCUHEX Files.....	12
1.5.2 RPI file.....	13
2. Descriptions of Functions	14
2.1 Main Window	14
2.2 Creating a New Project.....	15
2.2.1 [Create New Project] Dialog Box.....	15
2.2.2 [Tool Details] Dialog Box	17
2.2.3 [Set Clock] Dialog Box.....	20
2.2.4 [Set ID Code] Dialog Box	20
2.2.5 [Set Access Password] Dialog Box.....	22
2.3 Operating the Tabbed Pages	23
2.3.1 [Operation] Tabbed Page.....	24
2.3.2 [Operation Setting] Tabbed Page.....	26
2.3.3 [Block Setting] Tabbed Page.....	29
2.3.4 [Flash Option] Tabbed Page	31
2.3.5 [Connect Setting] Tabbed Page	34
2.3.6 [Unique Code] Tabbed Page.....	35
2.4 Menu Bar	38
2.4.1 [File] Menu	38
2.4.2 [Device Information] Menu	38
2.4.3 [Help] Menu.....	42
2.5 Command-Line Options	44
2.5.1 Example of Command Line Statements.....	44
3. Operating the RFP.....	45
3.1 Flow of Operations	46

4. Troubleshooting.....	55
4.1 Problems during Startup	55
4.2 Problems during Operation.....	56
4.3 Problems during Communications.....	60
4.4 Error Messages	61
5. Points for Caution	66
5.1 Manipulating the User Boot Mat	66
5.2 Host PC.....	66
5.3 USB-to-Serial Converter.....	66
5.4 Check before Connection.....	66
5.5 Erase Chip of the RH850 Family	66
5.6 Connecting through a COM port or USB Direct	66
5.7 Auto-padding with 0xFF.....	67

1. Overview

The Renesas Flash Programmer (hereafter referred to as the RFP) is software that uses an E1 emulator (hereafter referred to as the E1), E20 emulator (hereafter referred to as the E20), E2 emulator (hereafter referred to as the E2), or E2 emulator Lite (hereafter referred to as the E2 Lite) via a serial or USB interface to erase, write, and verify programs on a target system on which a Renesas Electronics MCU with on-chip flash memory is mounted.

1.1 Features

- Writing controlled by the host PC
- High-speed writing by using an emulator
- Simple operation for writing with a simple GUI specific to development
- Automatic writing from a command line
- Programming of a unique code to a designated area of flash memory

1.2 Supported Microcontrollers

Microcontrollers supported by the RFP are listed on the Web page at the following link:

<https://www.renesas.com/rfp>

1.3 System Overview

An overview of the RFP system is illustrated in the following diagram.

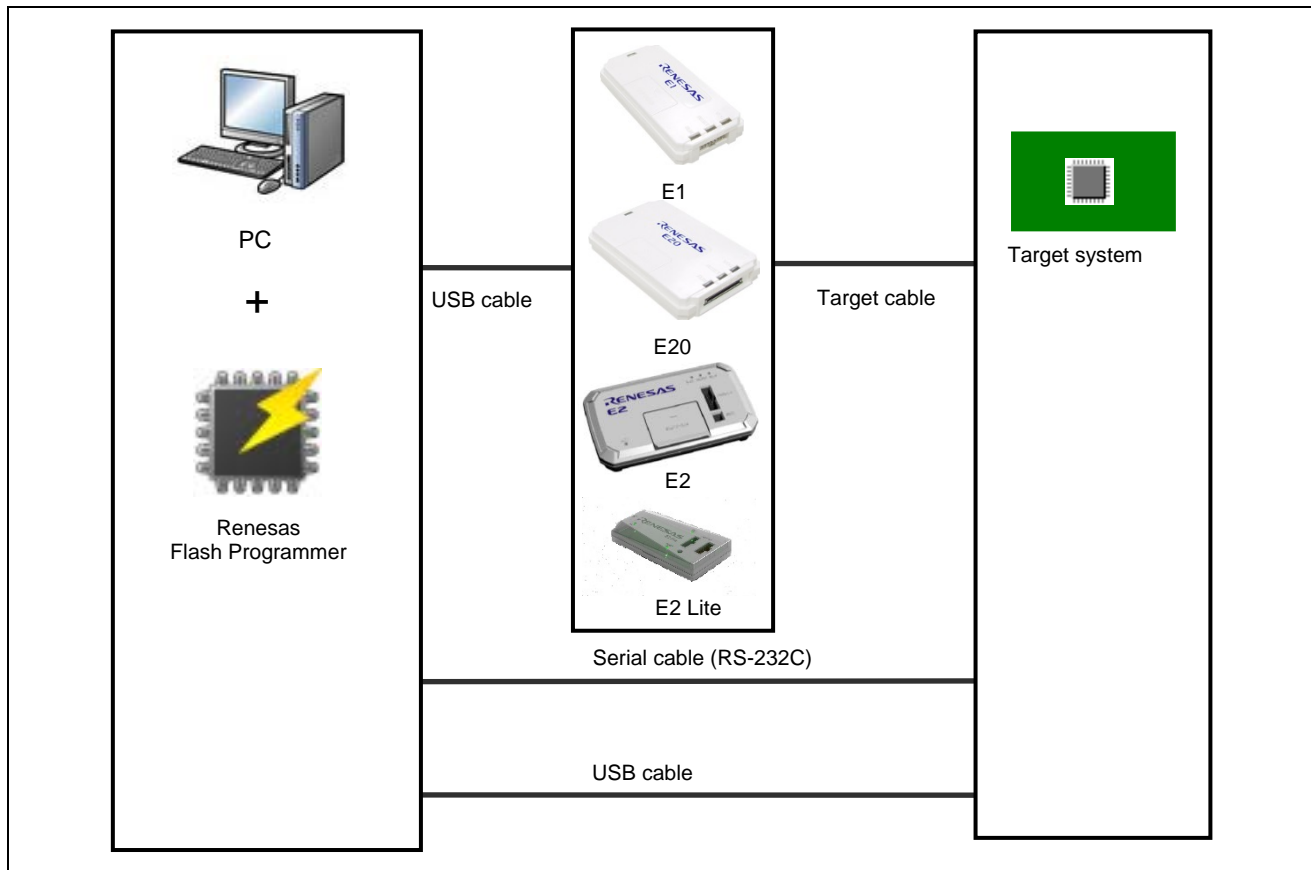


Figure 1-1 RFP Connection Image

1.3.1 Connection with the Target System

For examples of programming circuits by using the E1, E20, E2, or E2 Lite, refer to the user’s manuals for the individual products.

For examples of programming circuits using the USB, refer to the hardware manual of the MCU you are using.

Examples of programming circuits by using the serial interface of the host PC are provided on the web page at the following link.

<https://www.renesas.com/rfp>

1.4 Operating Environment

1.4.1 Hardware Environment

(1) Host PC

- Processor: 1 GHz or faster
- Main memory: At least 1 Gbyte (2 Gbytes or more when using 64-bit Windows); 2 Gbytes or more recommended
- Display: Resolution of 1,024 x 768 or higher and 65,536 or more colors
- Interface: USB 2.0 (when using E1, E20, E2, E2 Lite, or USB Direct)
Serial interface (RS-232C, when using COMx)

(2) Tools supported

- E1
- E20
- E2
- E2 Lite

1.4.2 Software Environment

(1) OSs supported

- Windows 7 (32-bit and 64-bit)
- Windows 8.1 (32-bit and 64-bit)
- Windows 10 (32-bit and 64-bit)

Remark: For any of these, we recommend having the latest service pack installed.

(2) Software required

- Microsoft .NET Framework 4 + language pack

1.5 Formats of Program Files

For a HEX file to be readable by the RFP, it must have the correct format and satisfy the following conditions. If a program file with a non-supported format is read, an error will occur.

(1) Intel HEX format

- There are no unnecessary characters (including spaces) after the final record.
- All lines consist solely of record types 00 to 05.

(2) Motorola S format

- The format file ends with the end record (S7, S8, or S9).
- All lines consist solely of record types S0 to S9 (excluding S4).

1.5.1 HCUHEX Files

An HCUHEX file is required for ordering flash memory products whose flash memories are pre-written by Renesas Electronics. After being generated by the HEX Consolidation Utility (HCU), operation based on the HCUHEX file must be verified by using the flash memory programmer. The RFP handles the HCUHEX file as master data, so the user can check the settings specified for writing and option data.

Some RL78 MCUs support HCUHEX files. If an MCU supports HCUHEX files, this will be stated in the user's manual of the MCU (RX and RH850 MCUs do not support HCUHEX files).

For details on the HCU, see the user's manual for the HCU or the target MCU. The HCU user's manual is available on the following web page:

<https://www.renesas.com/ja-jp/hcu>

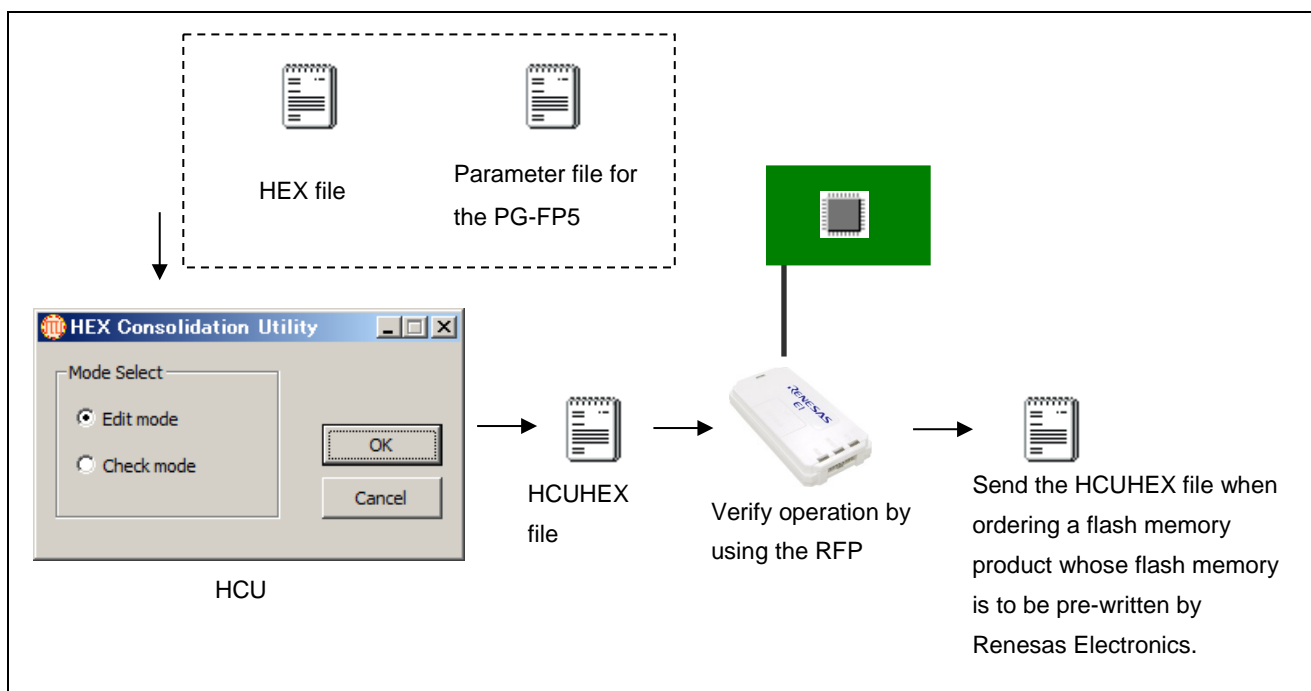


Figure 1-2 RFP Connection Image

1.5.2 RPI file

An RPI file is an image file that the RFP can generate. An RPI file combines program code and flash options data. Refer to section 2.4.1 for the generation of these files.

2. Descriptions of Functions

This chapter describes the window structure and functions of the RFP.

2.1 Main Window

After the RFP is started, the main window as shown below will appear.

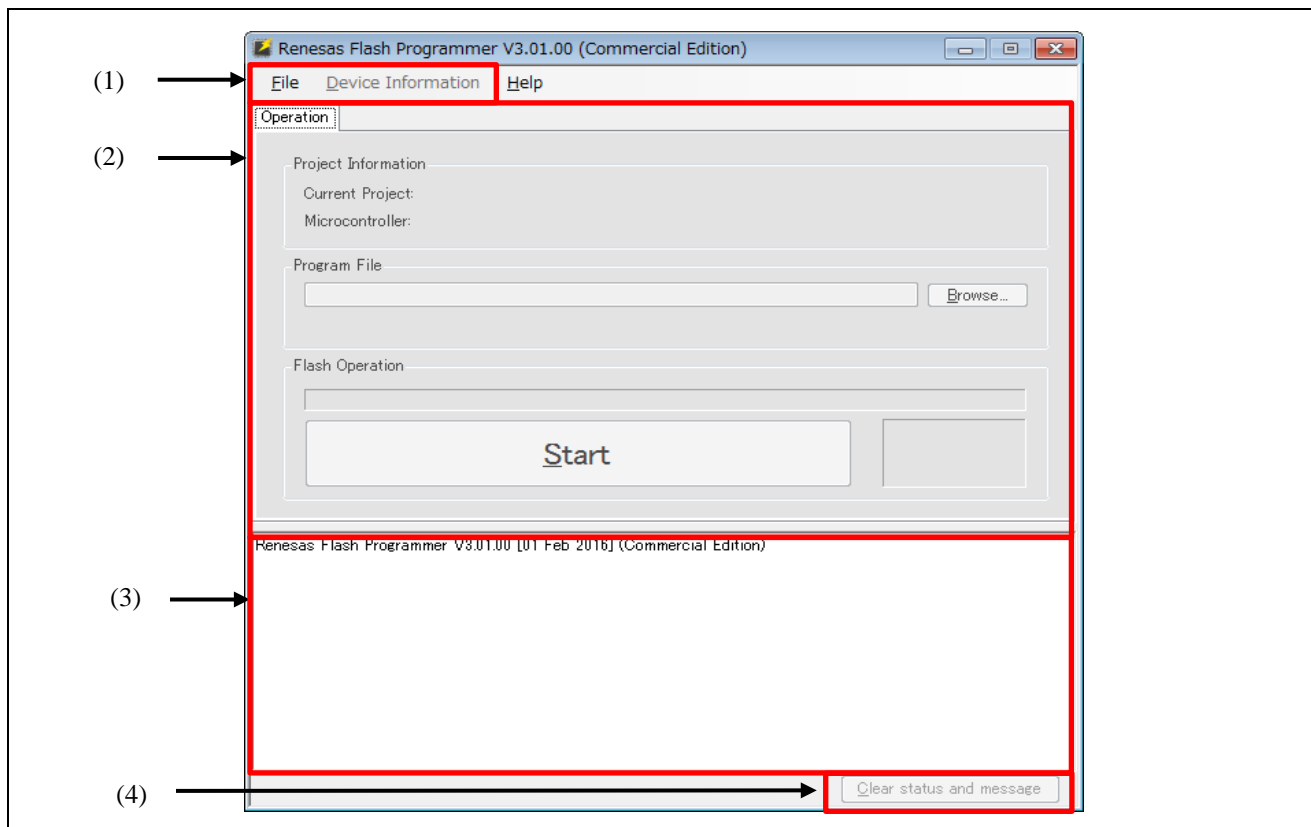


Figure 2-1 Main Window

(1) Menu bar

For the menu bar, refer to section 2.4, Menu Bar.

(2) Tabbed pages

Operations on the tabbed pages enable controlling the RFP for writing, setting options, and so on. For details on the individual tabbed pages, refer to section 2.3, Operation of the Tabbed Pages.

(3) Log output panel

The version information of RFP and the contents and results of command execution are displayed here.

Caution: Log entries older than the 1500th line are automatically removed.

(4) Clear status and message

Pressing this button clears the contents of the log output window and the status information on the [Operation] tabbed page.

2.2 Creating a New Project

2.2.1 [Create New Project] Dialog Box

Selecting [File] → [Create a new project] in the menu bar makes the [Create New Project] dialog box appear. The configuration of the dialog box is shown below.

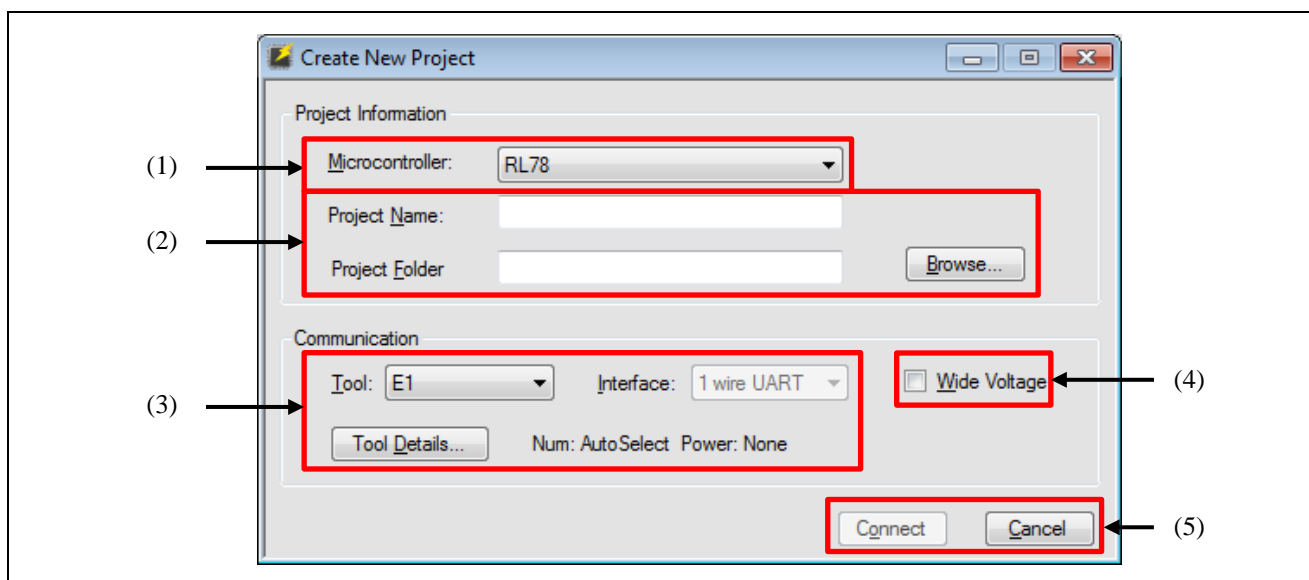


Figure 2-2 [Create New Project] Dialog Box

(1) Microcontroller

Select the type of target MCU to be used.

(2) Project Name and Project Folder

Specify the name of a project which is to be newly created and the project folder which will hold the created project file.

Remark: Since the project name is used in the file name, characters that are not usable in file names cannot be used.

(3) Communication

Set up communications with the target MCU.

- “Tool”

Select the tool to be used for connection with the target MCU.

Caution: For the USB connection of RX65x devices with Renesas Synergy, select “COM”, since serial communications are performed through a virtual USB COM port.

Remark: The usable tools may differ with the selected target MCU.

- “Interface”

When this item is selectable, select the method for communicating with the target MCU.

- **Tool Details...**

Make detailed settings for the tool to be used. The tool in use and the setting for the supply of power supply are shown to the right of **Tool Details...**. For details on **Tool Details...**, refer to section 2.2.2, [Tool Details] Dialog Box.

(4) Wide Voltage

When “Wide Voltage” is selected, each command can be executed with the target microcontroller set to wide voltage mode. When writing to the target MCU proceeds with a voltage lower than 2.4 V, deselect this checkbox. For details on the wide voltage mode, refer to the user’s manual of the target MCU.

Remark: “Wide Voltage” is not displayed for those target MCUs which do not support it.

(5) Connect

Clicking on Connect enables connection with the target MCU.

At this time, the following dialog boxes might be displayed according to the type of the target MCU; enter a value in each dialog box to continue processing to make the connection.

- [Set Clock] dialog box
- [Set ID Code] dialog box
- [Set Access Password] dialog box

For details on these dialog boxes, refer to sections 2.2.3, [Set Clock] Dialog Box, 2.2.4, [Set ID Code] Dialog Box, and 2.2.5, [Set Access Password] Dialog Box.

Caution: If the connection is made with incorrect settings, the tool or the target system might be damaged. For details, refer to chapter 5, Points for Caution.

2.2.2 [Tool Details] Dialog Box

The [Tool Details] dialog box consists of the following tabbed pages.

- [Select Tool] tabbed page
- [Mode Pin Setting] tabbed page

The [Mode Pin Setting] tabbed page is only displayed when the E1, E20, E2, or E2 Lite is selected.

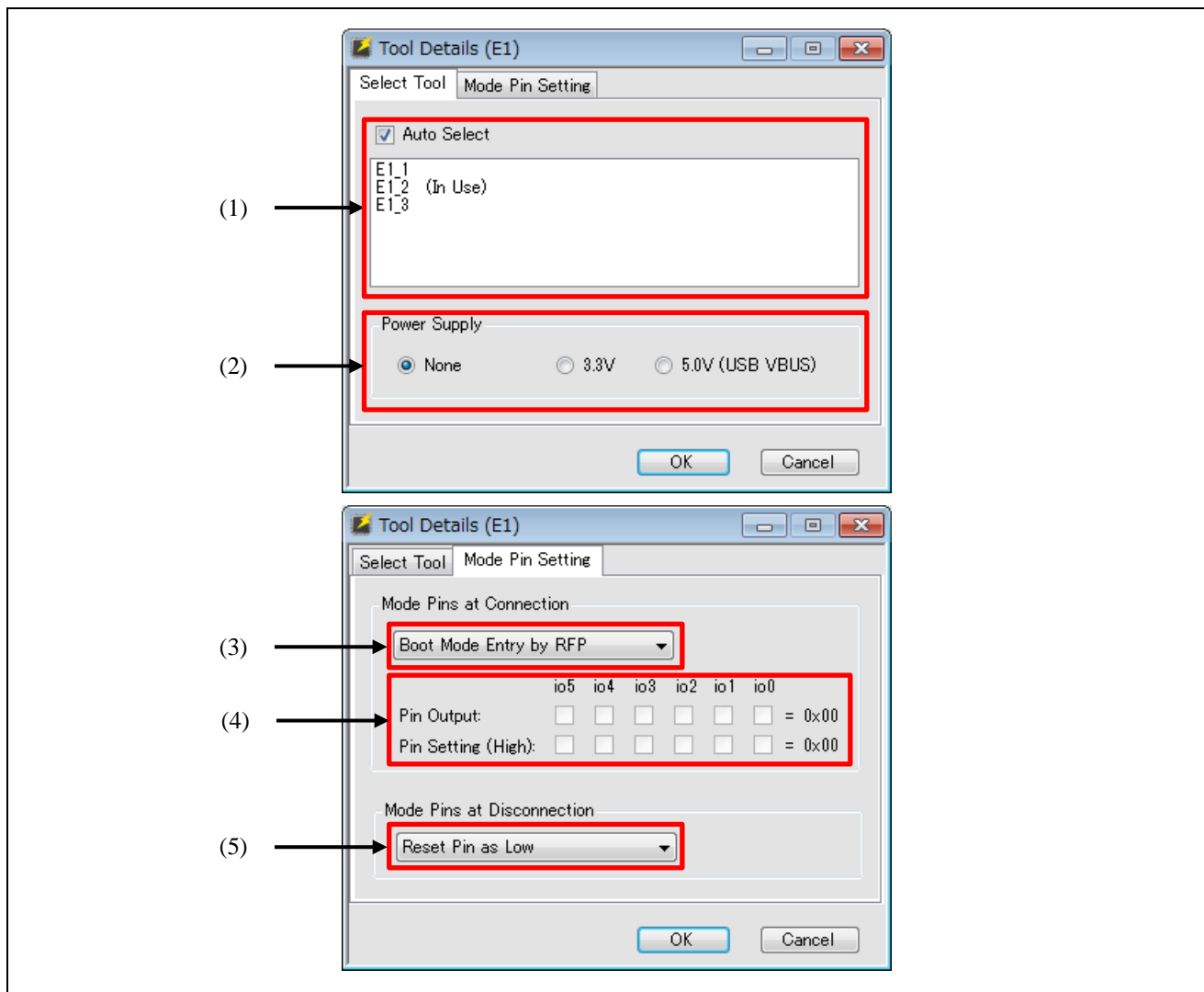


Figure 2-3 [Tool Details] Dialog Box

(1) [Select Tool]

Tools which are currently available are shown; select the tool to be used.

When the “Auto Select” checkbox is selected, the tool which is shown at the top of the list is automatically selected. To directly select the tool to be used, deselect the “Auto Select” checkbox and select a tool from the list.

Remark: For the E1, E20, E2, or E2 Lite, the serial number of the emulator is shown.

(2) Power Supply

Select the power-supply function of the tool.

Select “None” if no power is to be supplied from the tool in use.

Select the voltage when the tool in use is to supply power.

For the power-supply function, refer to the user's manual of the tool you are using.

Caution: Do not use the power-supply function from the tool in processing for mass-production; instead, supply power which matches the MCU's specifications from the target system. Since the voltage supplied from the tool depends on the performance of the USB power supply of the host PC, its precision cannot be guaranteed.

(3) Setting of entry to boot mode

Make settings for pins when the target MCU is connected.

- "Boot Mode Entry by RFP"

The settings of "Pin Output" and "Pin Setting" according to the recommended circuits of the tool in use are made automatically.

Remark: For the recommended circuit, refer to the user's manual and the additional document of the tool you are using.

- "Boot Mode Entry by User"

Manually make the settings for "Pin Output" and "Pin Setting".

Remark: "Boot Mode Entry by User" is selectable only for the RX family; however, it still might not be selectable depending on the tool in use and the communications interface.

(4) Setting of outputs

Selecting "Boot Mode Entry by User" for boot mode entry enables the setting of outputs.

The boxes set the output of the io0 to io5 pins of the tool in use when the target MCU is connected.

- Pin Output

Selected: The target pin is used as an output pin.

Deselected: The target pin is used as hi-Z.

- Pin Setting (High)

Selected: The high level is output.

Deselected: The low level is output.

For pin assignments of io0 to io5 in the E1, E20, E2, and E2 Lite, refer to table 2-1.

Table 2-1 Pin Assignments for the E1, E20, E2, and E2 Lite

14 Pins	38 Pins	Pin Name -RX-
1	15	io4
2	—	GND
3	21	io5
4	3	io0
5	11	TxD
6	1	io1
7	8	io3
8	14	TVDD
9	17	—
10	2	io2
11	19	RxD
12	—	GND
13	9	RESET
14	5	GND

(5) Setting of RESET

Sets the operation of the reset signal when the RFP is disconnected from the target MCU.

- Reset Pin as Low

After the RFP is disconnected from the target MCU, the low level continues to be output from the RESET pin.

- Reset Pin as High

After the RFP is disconnected from the target MCU and the RESET pin has been at the low level for a short time, the RESET pin enters the hi-Z state. This setting is used when the user wishes to operate the target MCU on completion of processing with the RFP.

2.2.3 [Set Clock] Dialog Box

The input clock must be set to suit the type of the target MCU.
 If setting of the input clock is required, the [Set Clock] dialog box will appear.

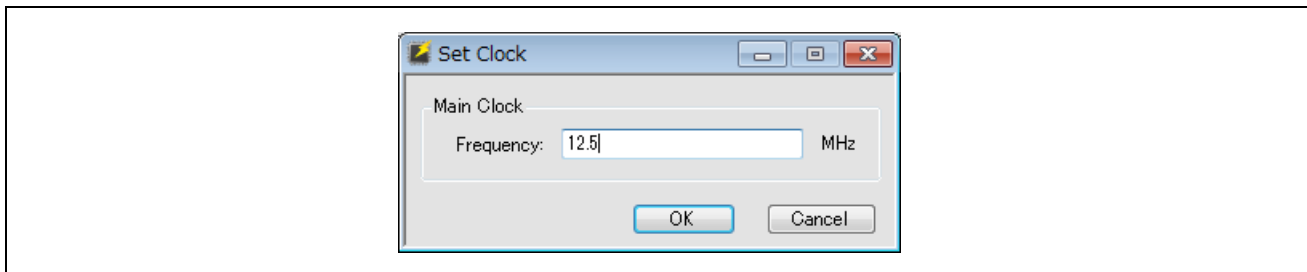


Figure 2-4 [Set Clock] Dialog Box

Enter the frequency of the input clock and click on **OK**.
 The value for frequency is entered in MHz. If you want to enter a value in smaller units than MHz, use a decimal point.

2.2.4 [Set ID Code] Dialog Box

When an ID code has been set for the target MCU, an ID code for authentication must be entered.
 If an ID code for authentication is required, the [Set ID Code] dialog box will appear.
 Remark: Whether or not there is an ID code function depends on the target MCU.

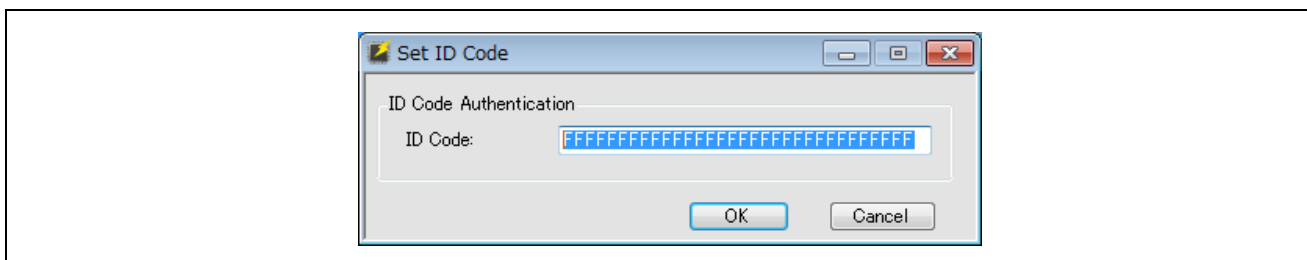


Figure 2-5 [Set ID Code] Dialog Box

Enter the ID code for authentication in hexadecimal notation (0 to 9 and A to F) and click on **OK**.

Caution

- If the value of the input field takes up fewer than the number of effective bytes, the RFP automatically pads the input data with 0xFF after the input value.
- When an RX-family device is connected via the RFP, input the value in the order ID1, ID2, ..., ID16. However, for a device with control code, enter the value of the code as the first of the effective bytes.
 Example:
 When the number of effective bytes = 16, control code = 0x45, ID code = ID1=0x01, ID2=0x02, ID3=0x03, ID4=0x04, ID5=0x05, ID6=0x06, ID7=0x07, ID8=0x08, ID9=0x09, ID10=0x0A, ID11=0x0B, ID12=0x0C, ID13=0x0D, ID14=0x0E, and ID15=0x0F, the value will be '450102030405060708090A0B0C0D0E0F'.
- When RX700, RX64x, or RX65x device is connected via a debug tool which has been specified with the CS+ or e2 studio, the order for input of the ID code for authentication changes to that shown below.
 ID4 ID3 ID2 ID1 ID8 ID7 ID6 ID5 ID12 ID11 ID10 ID9 ID16 ID15 ID14 ID13

Remark: The default ID code in some target MCUs at the time of shipment is all FFs. For details on the ID code, refer to the user's manual of the target MCU.

2.2.5 [Set Access Password] Dialog Box

When an access password has been set for the target MCU, an access password for authentication must be entered.

If an access password for authentication is required, the [Set Access Password] dialog box will appear. There are two types of this dialog box: for “Code Flash” and “Data Flash”, which are shown as required.

Remark: Whether or not there is an access password function depends on the target MCU.

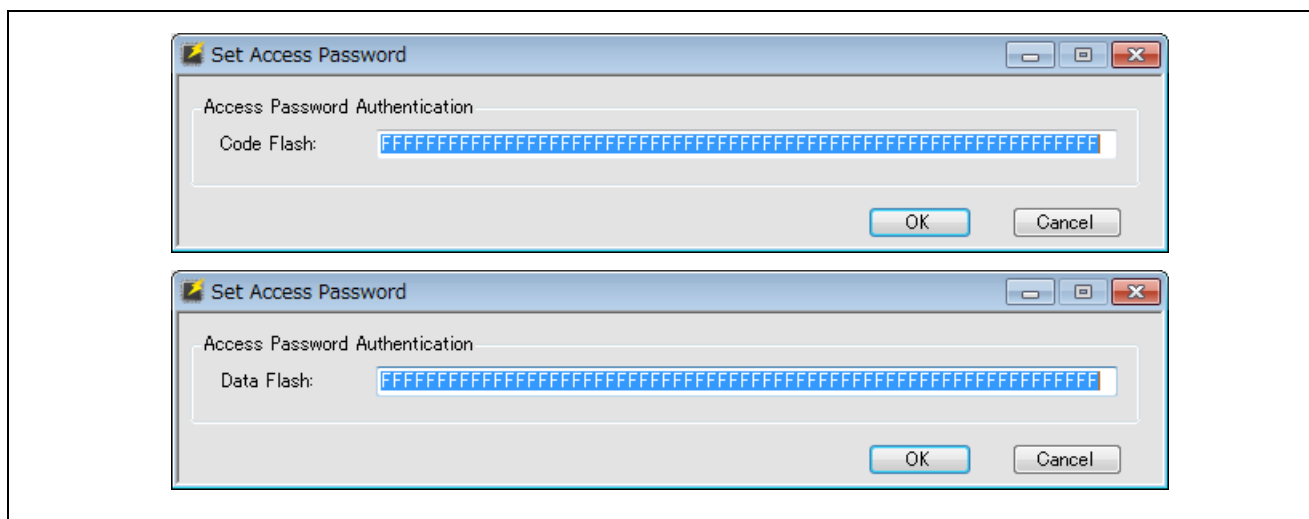


Figure 2-6 [Set Access Password] Dialog Boxes

Enter the access password for authentication in hexadecimal notation (0 to 9 and A to F) and click on .

Remark: The default access password in some target MCUs at the time of shipment is all FFs. For details on the access password, refer to the user's manual of the target MCU.

2.3 Operating the Tabbed Pages

When “Create New Project” is completed normally, the main window of the RFP is displayed.

Operating the tabbed pages in the main window allows you to make detailed settings of the RFP.

The tabbed pages consist of the six listed below.

- [Operation] tabbed page
- [Operation Setting] tabbed page
- [Block Setting] tabbed page
- [Flash Option] tabbed page
- [Connect Setting] tabbed page
- [Unique Code] tabbed page

The following describes the configuration and operation of each tabbed page.

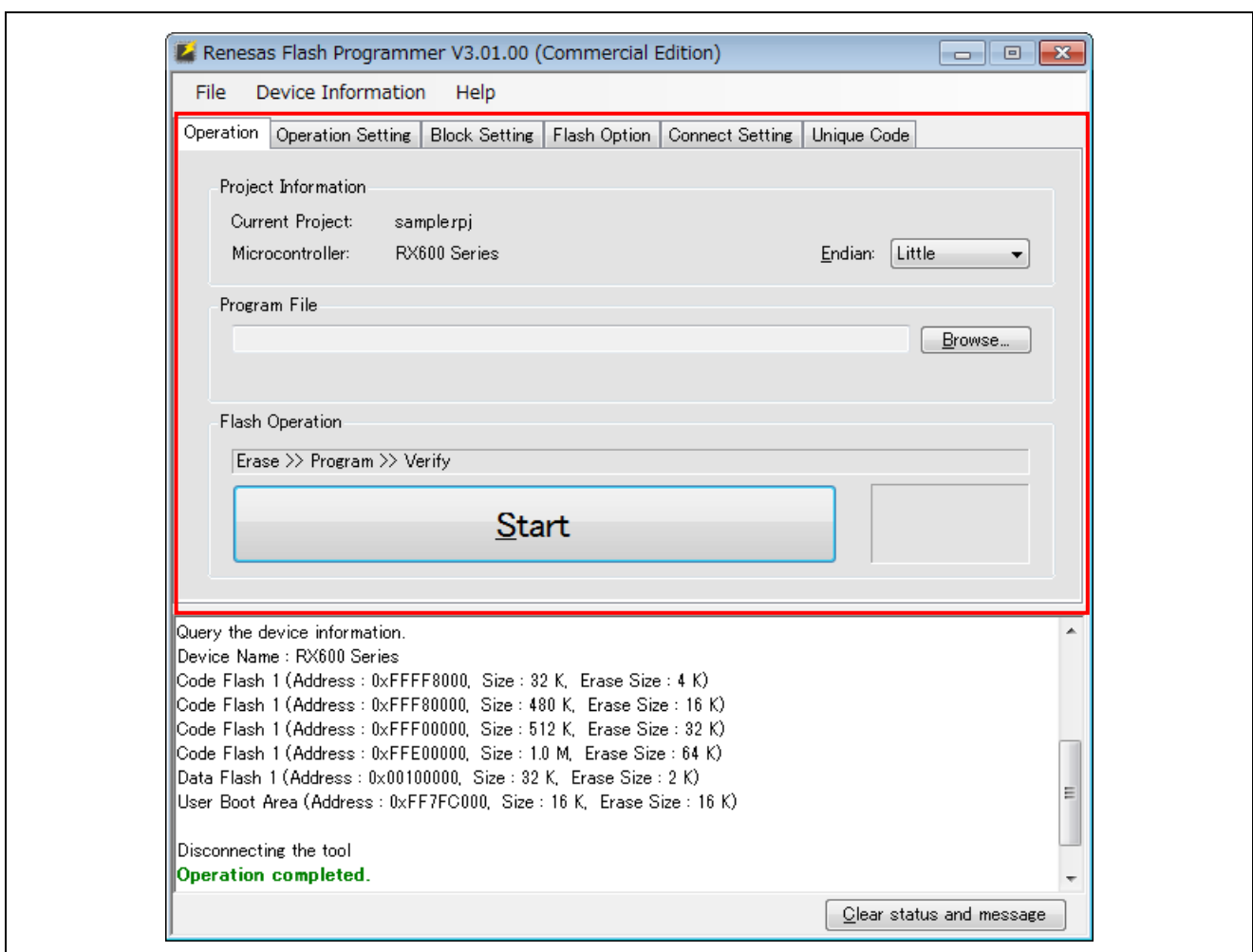


Figure 2-7 Main Window

2.3.1 [Operation] Tabbed Page

The [Operation] tabbed page shows information on the project and flash operation.

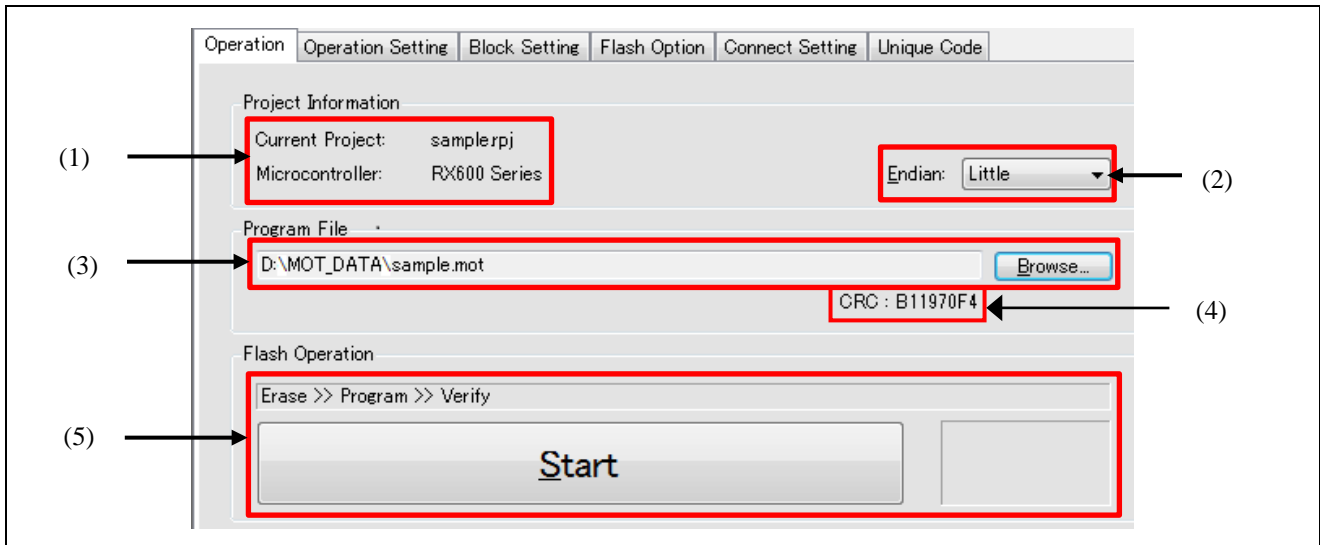


Figure 2-8 [Operation] Tabbed Page

(1) Project Information

Information on the selected project is shown.

(2) Endian

Select the endian for the data of the program file.

This item does not appear for target MCUs which do not support changing the endian in the RFP.

- “Little”

Set the handling of files for programming as little endian.

- “Big”

Set the handling of files for programming as big endian.

(3) Program File

Set the path to a file to be programmed in the flash memory of the target MCU.

Click on **Browse...** to select a file.

Multiple files for programming are also selectable simultaneously. Refer to 2.3.1.1, Selecting Multiple Program Files, for details.

(4) File Check Sum

CRC-32 check sum of the selected program file is displayed.

Caution: This CRC-32 is a check sum for whole of file, not for HEX data. The file check sum is different from the check sum of the one obtained from MCU.

(5) Flash Operation

Clicking on **Start** leads to the execution of commands to handle the processing shown above **Start**.

Information on the state is indicated with color and characters in the status display to the right of **Start**. For the status display, refer to table 2-2.

The type of flash operation can be changed on the [Operation Setting] tabbed page. For the [Operation Setting] tabbed page, refer to section 2.3.2, [Operation Setting] Tabbed Page.

Table 2-2 State Information

		Immediately after the RFP has been started or after clicking on the Clear button under the output panel
Run		A command is being executed.
OK		A command has been executed and ended normally.
Abort		Processing has stopped during the execution of a command.
NG		Processing failed after the execution of a command.

2.3.1.1 Selecting Multiple Program Files

When selecting multiple files, specify all desired files beforehand then press the [Start] button to run the actual programming. Selecting **Browse...** opens the [Specify a program file] dialog box. The files can be recorded by selecting them by mouse or by using the CTRL or SHIFT keys with the mouse or mouse and cursor keys, and then selecting **Open**.

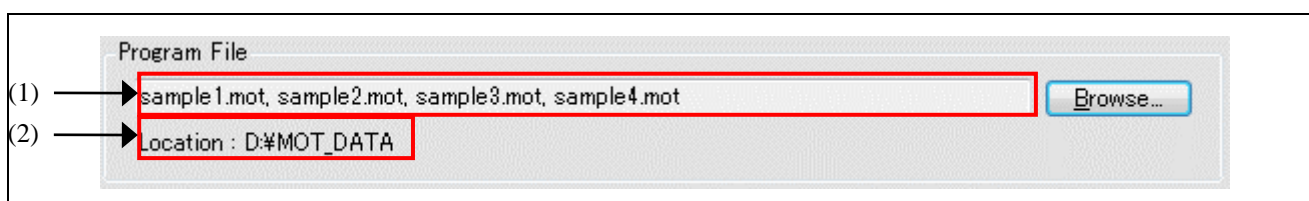


Figure 2-9 [Program File] Group Box after the Selection of Multiple Files for Programming

(1) Program Files

Only the file names are displayed when multiple files have been selected. That is, the path is separately displayed. Up to 4 files can be selected.

(2) File Information

The path to the files for programming is displayed.

Caution

- An error occurs if an RPI or HCUHEX file is specified in the selection of multiple files.
- An error occurs when writing to the flash area in cases of contention between the addresses of the data files for programming are in contention.
- The selected multiple files must be in the same folder.

2.3.2 [Operation Setting] Tabbed Page

Settings for the flash operation can be changed on the [Operation Setting] tabbed page.

Remark: Some items will not be shown according to the selected program file or the type of the target MCU.

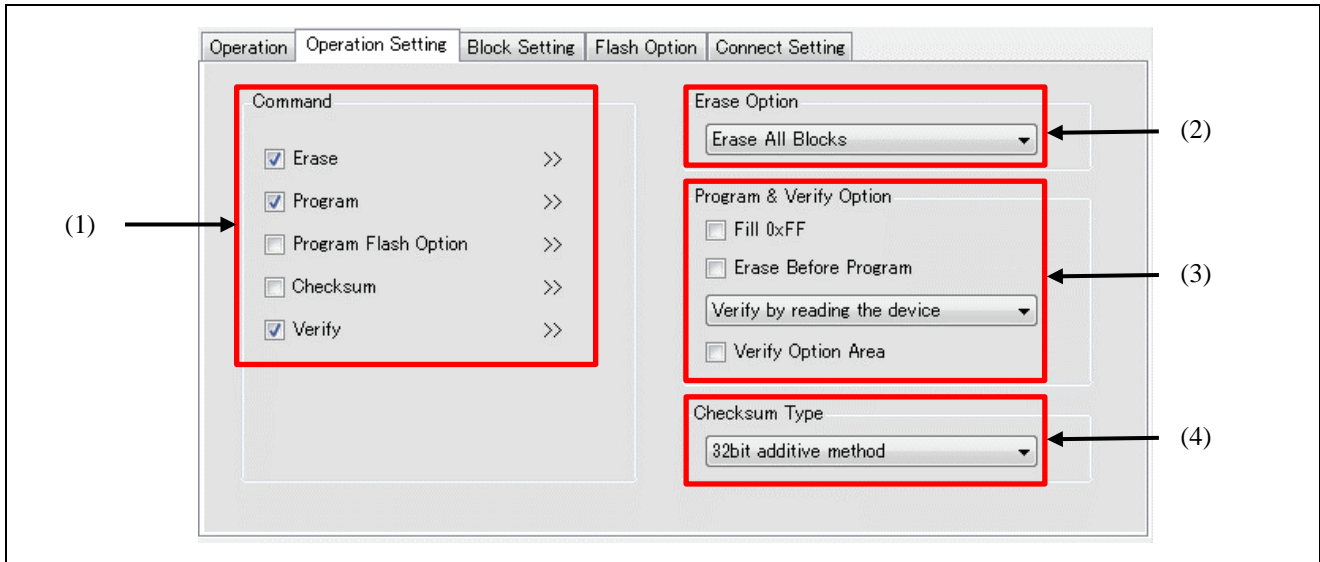


Figure 2-10 [Operation Setting] Tabbed Page

(1) Command

Specify the type of processing that will proceed after clicking on **Start** in the main window.

When multiple operations are specified for “Command”, each operation is executed from the top item in order.

The following five types of processing can be specified for “Command”, and are described in more detail following the summaries below.

- Erase

Erase the flash area.

The range of areas to be erased conforms to the setting made with “(2) Erase Option”.

- Program

Program the flash area.

The operation reflects the setting made under “(3) Program & Verify Option”.

- Program Flash Option

Set flash options such as “Lockbit”, “OTP”, “Access Window”, “Option Bytes”, and “Security”.

The programming setting conforms to the settings made on the [Block Setting] and [Flash Option] tabbed pages.

- Checksum

Acquire the checksum.

The checksum is calculated by the method selected under “(4) Checksum Type”.

Remark: The results are output in units of areas of flash memory. Use the verify command if you want to check the consistency of data in units of blocks.

- Verify

Perform verification.

The operation reflects the setting made under “(3) Program & Verify Option”.

(2) Erase Option

Set options when “Erase” is selected for “Command”.

- Erase Selected Blocks

Erase only those blocks selected on the [Block Setting] tabbed page.

For the [Block Setting] tabbed page, refer to section 2.3.3, [Block Setting] Tabbed Page.

- Erase All Blocks

Erase all blocks.

Caution: Erasure processing may be skipped for certain blocks reserved by the MCU due to security functions and so on.

- Erase Chip

Erase all blocks and clear the flash options.

Caution: This processing does not restore the MCU to its state at shipment. If correct settings are not programmed for the flash options after erasing the chip, the MCU will not operate.

When this processing is used on a RH850 family product, be sure to refer to chapter 5, Points for Caution.

(3) Program & Verify Option

Set options here when you have selected “Program” or “Verify” for “Command”.

- **Fill 0xFF**

Select the method for handling ranges for which files have no data.

- **When “Fill 0xFF” is selected**

Programming: The value 0xFF is programmed to bytes in ranges for which the program file has no data.

Verifying: Ranges containing no data from a program file are regarded as having the value 0xFF for comparison.

- **When “Fill 0xFF” is not selected**

Programming: Ranges for which the program file has no data are not programmed.

Verifying: Ranges for which the program file has no data are not verified.

Caution: Even if “Fill 0xFF” is not selected, this action always applies for the minimum unit of programming by the MCU.

- **Erase Before Program**

The range where data are to be programmed is erased beforehand if this option is selected.

Caution: The range to be erased depends on the minimum unit of erasing by the MCU.

- **Verification type**

Select the type of verification as one of the following items. Depending on the target MCU, only one type may be available.

- **Verify by reading the device**

Data are acquired with a read command from the MCU and the RFP handles comparison.

Comparison cannot proceed if the MCU is in a state such that reading is prohibited.

- **Verify in the device**

Data are re-sent to the MCU in response to the verify command and the MCU side handles comparison.

Depending on the specifications of the verify command, the range for comparison may extend beyond the programmed data, and this may lead to an error in verification if “Fill 0xFF” was not selected.

- **Verify Option Area**

Select whether or not to verify values in the flash option area.

This item is only displayed when a specific type of program file that includes values for the options, such as an HCUHEX file, is selected.

(4) Checksum Type

Select the type of calculation when “Checksum” is selected for “Command”.

The available types of calculation differ according to the target MCU.

2.3.3 [Block Setting] Tabbed Page

The blocks for operations can be set on the [Block Setting] tabbed page.

Remark: The columns to be displayed differ according to the type of the target MCU.

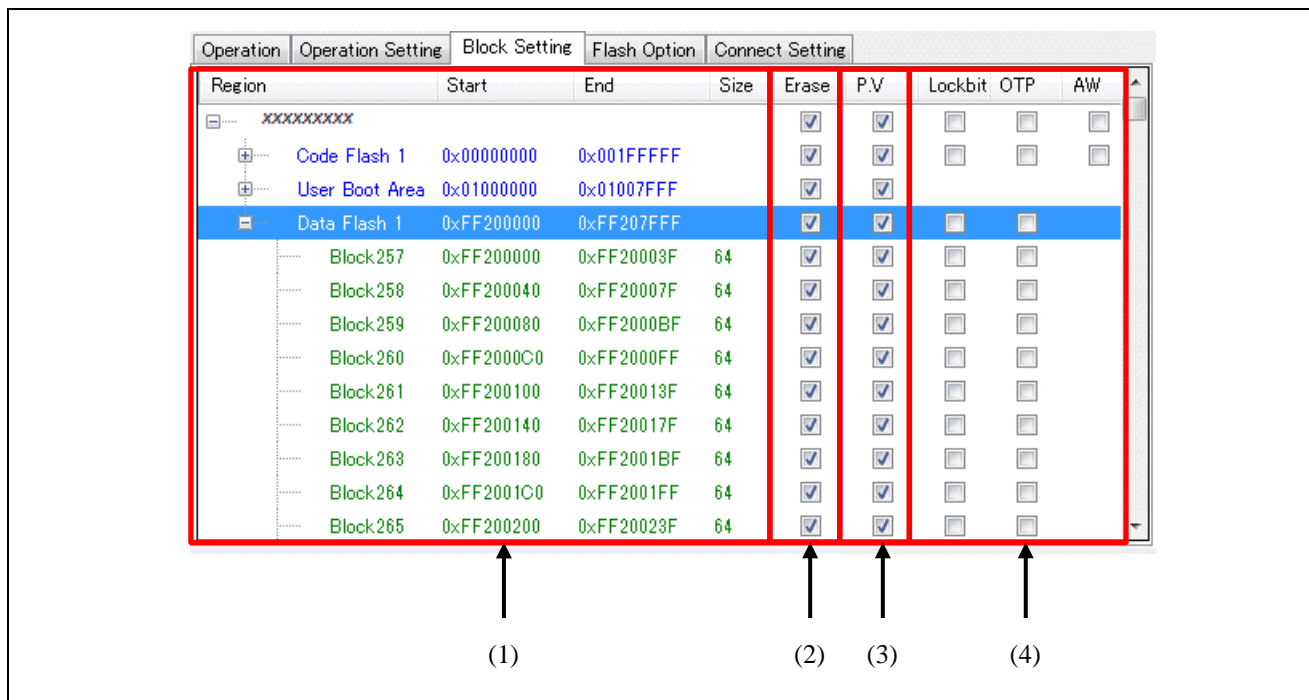


Figure 2-11 [Block Setting] Tabbed Page

(1) Information on the block areas

Information on the ranges of the block areas for the target MCU is shown.

Caution: Common area names and block numbers are used in the RFP; note that they may differ from those described in the user’s manuals of the MCUs.

(2) Erase column

Specify blocks to be erased.

When “Erase Selected Blocks” is selected for “Erase Option” on the [Operation Setting] tabbed page, blocks with checkboxes selected in the Erase column are to be erased.

(3) P.V column

Specify blocks to be programmed or verified.

Blocks with checkboxes selected in the P.V column are to be programmed or verified.

(4) Setting functions in units of blocks

Specify blocks for the setting of security or safety functions.

While “Program Flash Option” is selected, the settings are only reflected in the MCU when the type of setting is enabled on the [Flash Option] tabbed page.

- Lockbit column

Select blocks for which the lock bit is to be set.

A lock bit is set for blocks with the checkbox selected.

- OTP column

Select blocks to be set as OTP.

Blocks with the checkbox selected are set as OTP.

- AW column

Select blocks to be within access windows (or window areas of the flash shield window).

An access window is set for blocks with the checkbox selected.

2.3.4 [Flash Option] Tabbed Page

The flash options of the MCU can be set in the [Flash Option] tabbed page.

Remark: Only those items the target MCU supports are shown. For the meanings and details of the settings of the individual items, refer to the user's manual of the target MCU in use.

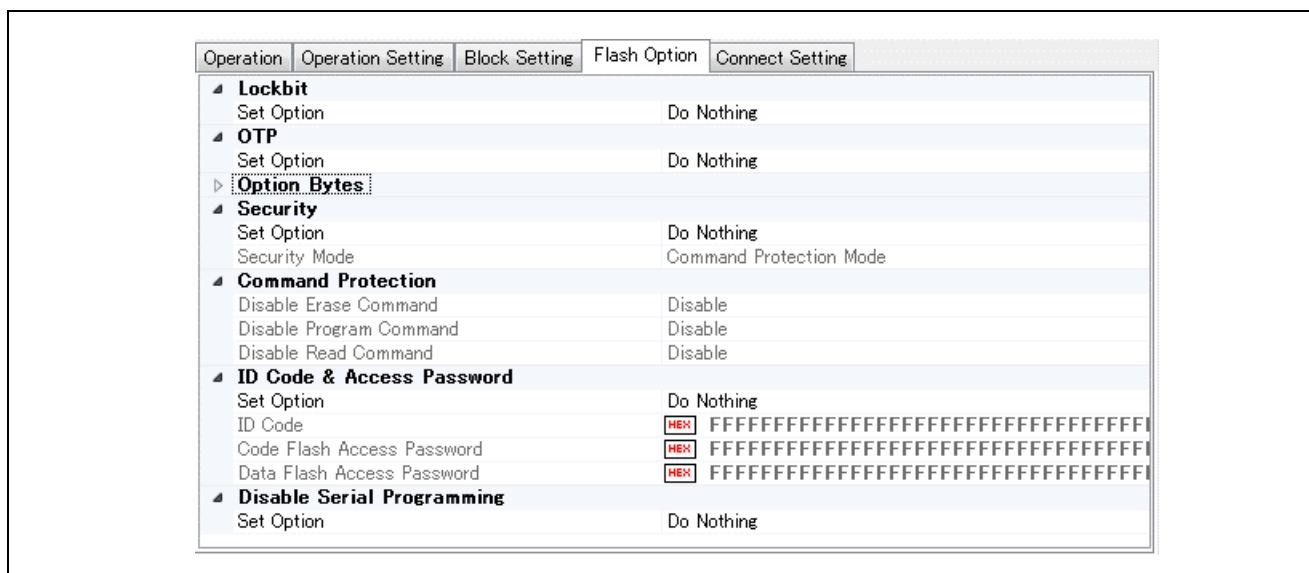


Figure 2-12 [Flash Option] Tabbed Page

(1) Lockbit

Specify whether or not lock bits are to be set.

The blocks for which the lock bit is to be set are selected on the [Block Setting] tabbed page.

(2) OTP

Specify whether or not blocks are to be set as OTP.

The blocks to be set as OTP are selected on the [Block Setting] tabbed page.

(3) Access Window

Specify whether or not access windows are to be set.

The range over which access windows are to be set are the blocks selected on the [Block Setting] tabbed page.

(4) Option Bytes

Change the settings of option bytes.

- “Set Option”
 - “Do Nothing”: Option bytes are not set.
 - “Set”: The setting of option bytes is enabled.
- “Enable Extended Option Bytes”
 - “Disable”: Operations on the extended option bytes (OPBT8 and above) are disabled.
 - “Enable”: Operations on the extended option bytes (OPBT8 and above) are enabled.

Caution: Since the extended option bytes contain important settings for the MCU, take care with the data to be programmed if you enable this operation. Normally use this option as “disabled” unless you have a particular reason to do otherwise.

- “OPBT0~OPBT7”

Enter the settings for option bytes in units of four bytes in hexadecimal notation (bit31....bit0).

- “OPBT8” or later

Enter the settings for extended option bytes in units of four bytes in hexadecimal notation (bit31....bit0).

(5) ICU-S

Set ICU-S.

- “Set Option”
 - “Do Nothing”: ICU-S is not set.
 - “Set”: The ICU-S function is enabled.

Caution: Once the ICU-S function is set for the MCU, it cannot be canceled by the RFP.

(6) Security

Set security functions.

- “Set Option”
 - “Do Nothing”: The security function is not set.
 - “Set”: The security function is enabled.
- “Security Mode”
 - “Command Protection Mode”: The command protection function is enabled.
 - “ID Authentication Mode”: The ID authentication function is enabled.

(7) Command Protection

Set command protection.

- “No”: The security function is not set for the target command.
- “Yes”: The use of the target command is prohibited.

Caution: Once the Disable Erase Command and Disable Boot Block Cluster Programming functions are set for an MCU, the setting cannot be reversed.

(8) ID Code & Access Password

Set the ID code or the access password.

- “Set Option”
 - “Do Nothing”: An ID code or access password is not set.
 - “Set”: The setting of an ID code or access password is enabled.

- “ID Code”

Enter the ID code in hexadecimal notation.

- “Code Flash Access Password”

Enter the code flash access password in hexadecimal notation.

- “Data Flash Access Password”

Enter the data flash access password in hexadecimal notation.

(9) Disable Serial Programming

Make the setting for disabling serial programming.

- “Set Option”
 - “Do Nothing”: Serial programming is not disabled.
 - “Set”: Serial programming is disabled.

Caution: Once the Disable Serial Programming function is set for an MCU, the setting cannot be reversed.

2.3.5 [Connect Setting] Tabbed Page

The information required to connect the MCU can be set on the [Connect Setting] tabbed page.

Remark: The items displayed differ according to the type of the target MCU.

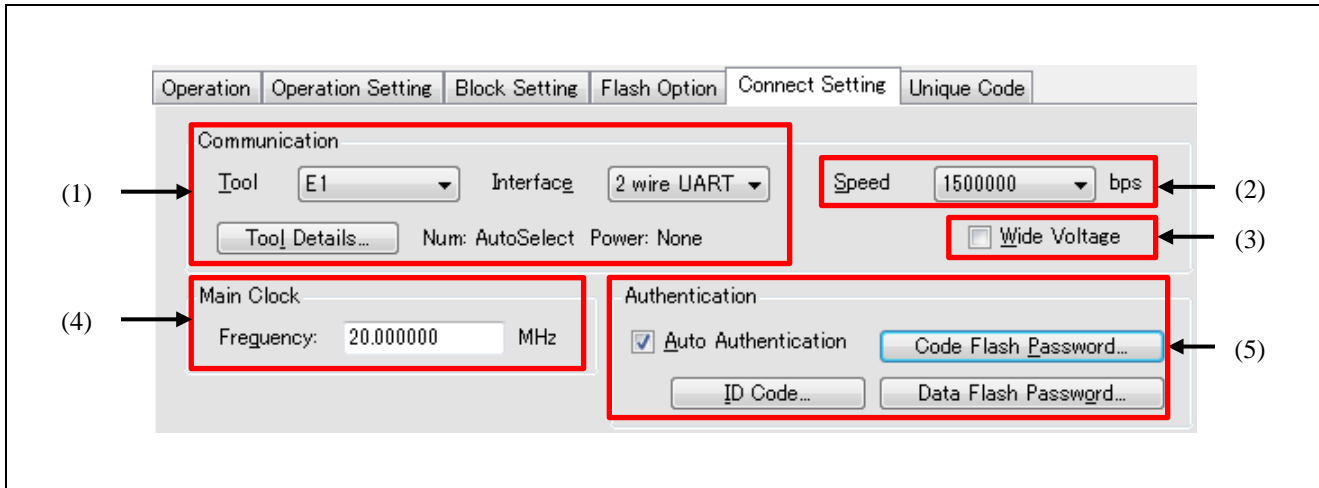


Figure 2-13 [Connect Setting] Tabbed Page

(1) Communication

Change the settings for communications.

For details, refer to section 2.2.1, [Create New Project] Dialog Box.

(2) Speed

Select the bit rate for use in communications with the target MCU.

The available bit rates differ according to the environment of the target MCU and the target system.

Caution: The speed is only directly specifiable for a COM connection. Since using this may lead to the RFP being unable to detect a bit-rate error, set the speed only after confirming that it will not cause a problem.

Remark: The maximum rate that the E2 Lite can support is 1.5 Mbps. However, only rates which are selectable from the external clock of the target MCU or system are displayed for the RX family. The baud rate which was selected for the E1, E20, or E2 emulator might not be selectable.

(3) Wide Voltage

For details, refer to section 2.2.1, [Create New Project] Dialog Box.

(4) Main Clock

Change the frequency of the input clock from that which was set when the project was created.

(5) Authentication

Change the setting for automatic authentication when connecting a target MCU for which an ID code or access password has been set.

When “Auto Authentication” is selected, the ID code or access password that has been entered is used for authentication. To change the value used for automatic authentication, enter a new value in the dialog box which is displayed by clicking on the button for changing the setting.

2.3.6 [Unique Code] Tabbed Page

The [Unique Code] feature is for the embedding in a specified area of a unique code for the loaded program file. The feature becomes effective when a unique code and specified area are written to a unique code file, and the file name is set on the [Unique Code] tabbed page. A unique code file can contain a single specification of an area and multiple unique codes, with an index for each of the unique codes. The next index will be specified when a [Program] command ends normally; however, no index will be specified when a [Flash Option Program] command ends normally.

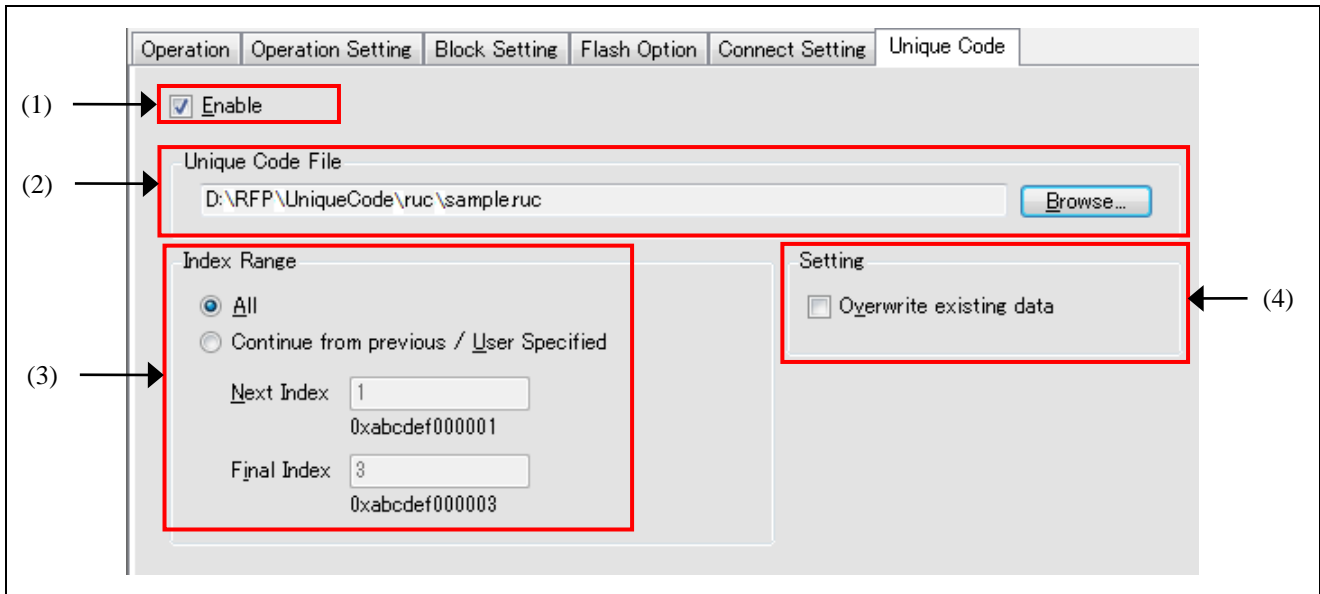


Figure 2-14 [Unique Code] Tabbed Page

(1) Enabling or Disabling the Use of Unique Codes

Usage or non-usage of the unique code feature can be set in this checkbox.

Check the box to select the use of unique codes.

(2) Unique Code File

Open the [Open] dialog box by clicking on **Browse...**, and specify a unique code file.

(3) Specifying a Range

Specify a range of indices in the unique code file.

- “All”

Obtain the first and last indices from the unique code file. This starts from the first index when the RFP is rebooted.

- “Continue from previous/User Specified”

The first and last indices are directly specifiable. Even if the RFP is rebooted, it will start from the previous point.

- “Next Index”: The next index is displayed or specified. The corresponding unique code will be shown under the box.
- “Final Index”: The last index of the range is displayed or specified. The corresponding unique code will be shown under the box.

(4) Operation Setting

- Allow the overwriting of data

When embedding a unique code for a loaded program file, this button is used to allow or prohibit the overwriting of data if the area where the code is to be embedded already contains data (contention). Put a checkmark in the box to allow this and remove the checkmark to prohibit it.

[Remark] If the checkmark is removed, an error message is displayed and the process is cancelled, in cases of contention with existing data during embedding of the unique code.

2.3.6.1 Unique Code Files

This section describes unique code files.

(1) Filename Extension

*.ruc

(2) File Format

A unique code file is a text file. A file consists of a header and a code part. Write a list of the combinations of indices and unique codes after the header, which defines the location where the unique code is to be embedded. The only supported formats for the codes are ASCII (one byte) character codes. Unicode is not supported.

- Comment line

Line starting with “/” are considered as comments and ignored in processing. Lines consisting only of blanks are also ignored.

- Separating characters

Tabs, spaces, or commas can be used as separating characters in the header definitions and the settings of the indices and unique codes.

- Header part

The header part has the following definitions that are case-insensitive.

Table 2-3 Header Definitions

Item	Definition of Unique Code
	Description
Specifying the format	format <hex ascii>
	Specify the format of the unique codes. <hex>: Hexadecimal numerals <ascii>: ASCII characters (0x20 to 0x7e)
Specifying the address	address <address>
	Specify the address where the unique code is to start as a hexadecimal number preceded by “0” or “H”.
Specifying the size	size <size>
	Specify the size of each unique code.
	<size>: Specify a size in bytes (range: 1 to 2048)

Remark: An area specification (area) was necessary for the earlier versions. It is now ignored even if there is a statement in the file.

- Codes

The list of unique codes consists of indices and codes, with only one code and index per line. Indices need not be prefixed by padding with“0” as in the example. They are assumed to be base-10 ordinal numbers in ascending order.

Table 2-4 Code Definitions

Item	Unique code definition
	Description
Declaration of unique codes (header of code part)	index data
	Declares that unique codes follow from the next line. This is case-insensitive.
Indices and unique codes	<index> <unique code>
	Each line specifies an index and a unique code. <index>: Specifies an index (integer in the range 0 to 2147483647) <unique code>: Specifies a unique code (big endian format, with the format and size specified in the header) <ul style="list-style-type: none"> If the format is ascii <unique code> A unique code can be enclosed in double quotation marks. If the code includes a space at its beginning or end, the quotation marks are required to distinguish such spaces from separating characters. If the code itself includes consecutive double quotation marks, they are handled as one double quotation mark.

- Limit on size

The size of a unique code file should be no greater than 2 GB.

(3) Example of a File

```
//Sample unique code file
format hex
address 0xf000
size 6
index data
000001 abcdef000001
000002 abcdef000002
000003 abcdef000003
```

2.4 Menu Bar

2.4.1 [File] Menu

Menu items for processing related to projects can be selected.

- [Create New Project]

Create a new project.

For details, refer to section 2.2, Creating a New Project.

- [Open Project]

Open an existing project file.

- [Save Project]

Save the changes to the current project.

- [Save Image File]

Saves an image file (RPI file) that is a combination of a program file and flash options.

Select [Save Image File] from the [File] menu. This opens the [Save As] dialog box. Specify where the image file is to be saved.

Cautions:

- The program file is saved as it is. The file is not padded with 0xFF.
- Data which exceed the address range of the MCU in use are not deleted.
- Only values which represent valid settings can be saved as flash options.

- [Exit]

Exit the RFP.

2.4.2 [Device Information] Menu

Processing for device information can be selected.

Caution: Selecting items from the [Device Information] menu leads to transfer to and from the target MCU to acquire information. Before selecting an item, check the connection between the host PC and the target MCU. If a connection is not found, an error will occur.

Remark: Some menu items will not be usable according to the type of the target MCU.

- [Read Memory]

Connect the target MCU and read and save the contents of the flash areas.

For details, refer to section 2.4.2.1, Read Memory.

- [Read Block Information]

Connect the target MCU and read the information on the blocks.

The read block information can be reflected in the current project.

For details, refer to section 2.4.2.2, Read Block Information.

- [Read Flash Option]

Connect the target MCU and read the flash options.

The read flash option information can be reflected in the current project.

For details, refer to section 2.4.2.3, Read Flash Option.

- [Blank Check]

Connect the target MCU for blank checking.

2.4.2.1 Read Memory

When [Device Information] → [Read Memory] is selected from the menu bar, the [Save As] dialog box will appear. Specify the file and folder where the data that have been read are to be stored.

Clicking on the **Save** button shows the [Read Memory Information] dialog box. Specify the range of the flash area to be read.

Remark: The Motorola S format or the Intel HEX format is selectable as the file format for saving.

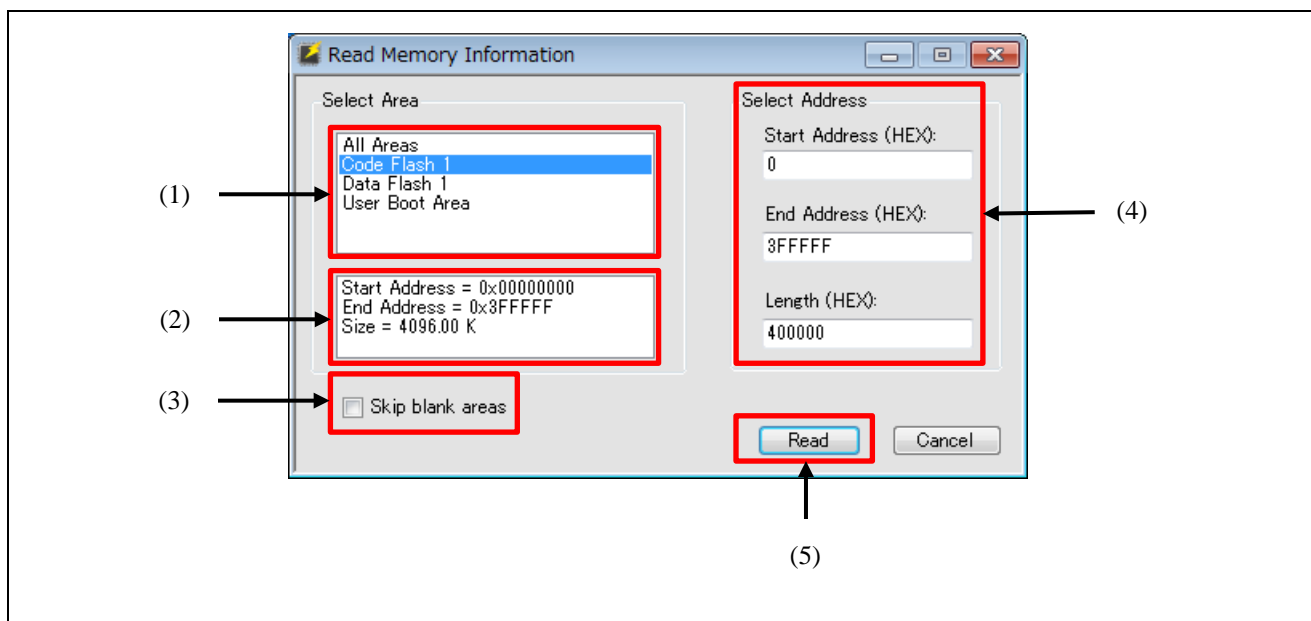


Figure 2-15 [Read Memory Information] Dialog Box

(1) Area list

Select the area to be read or all areas.

(2) Area information

Information on the area that has been selected from the list of areas or on all areas is shown.

(3) Skip blank areas

Reading of blank areas of the MCU is skipped if this checkbox is selected.

Remark: The size of the area for judging whether a range is blank or not differs according to the target MCU. Furthermore, in some target MCUs, selecting this option will significantly increase time for reading.

(4) Select Address

Change items when only a specific range is to be read.

(5) **Read**

Connect the target MCU, start reading the range specified in “Select Address”, and save the data in the specified file and folder.

2.4.2.2 Read Block Information

When [Device Information] → [Read Block Information] is selected from the menu bar, the [Read Block Information] dialog box will appear after connecting the target MCU, and information on blocks, including lock bits, OTP flags, and access windows, will be read. Note that the columns to be shown differ according to the type of the target MCU in use.

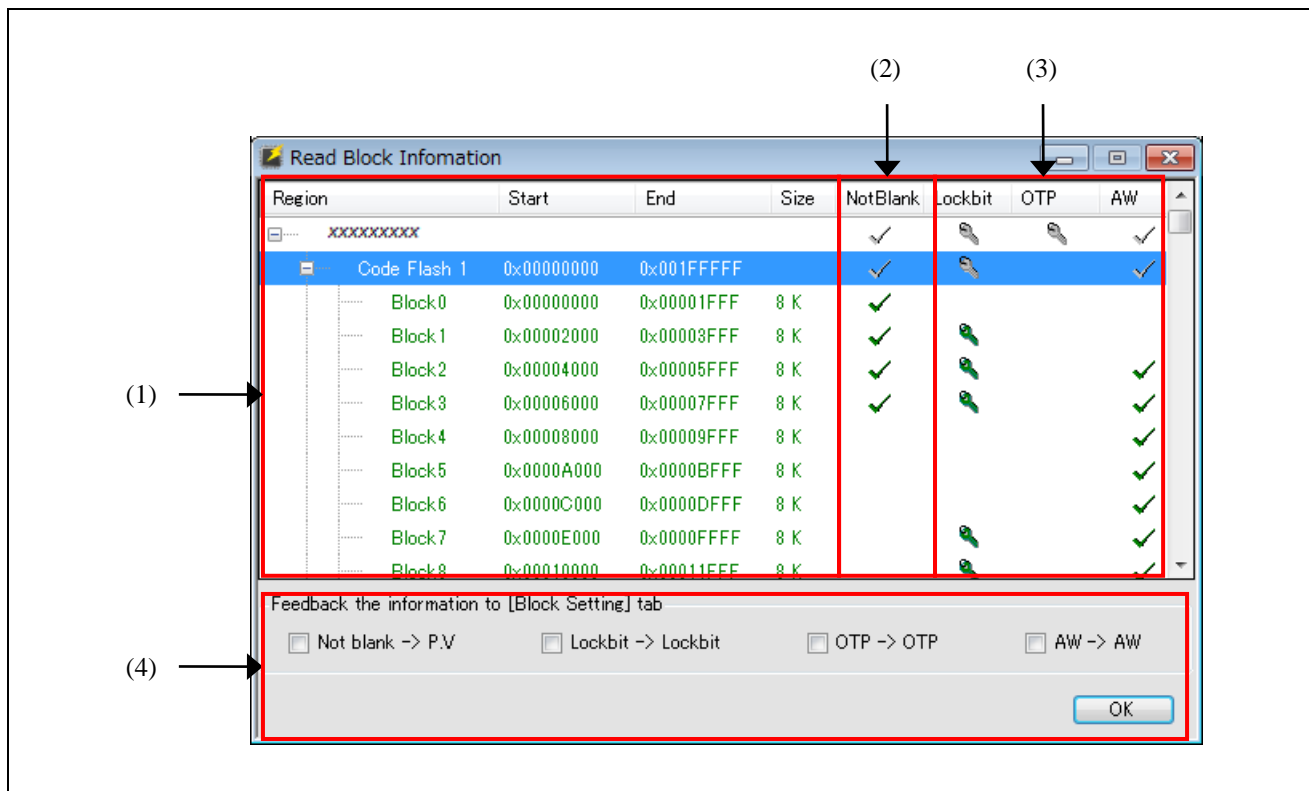


Figure 2-16 [Read Block Information] Dialog Box

(1) Information on block areas

Information on the block areas for the target MCU is shown.

(2) “NotBlank” Column

Information on blank blocks in the target MCU is shown.
Blocks with check marks are not blank.

(3) Information on options in units of blocks

Information on the target MCU in units of blocks is shown.
For details on each item, refer to section 2.3.3, [Block Setting] Tabbed Page.

(4) Reflecting read information

Clicking on **OK** reflects the read contents of the checked items in the corresponding columns of the [Block Setting] tabbed page.

2.4.2.3 Read Flash Option

When [Device Information] → [Read Flash Option] is selected from the menu bar, the [Read Flash Option] dialog box will appear after connecting the target MCU and information on Option Bytes and Security will be read out. Note that the items to be shown differ according to the type of the target MCU in use.

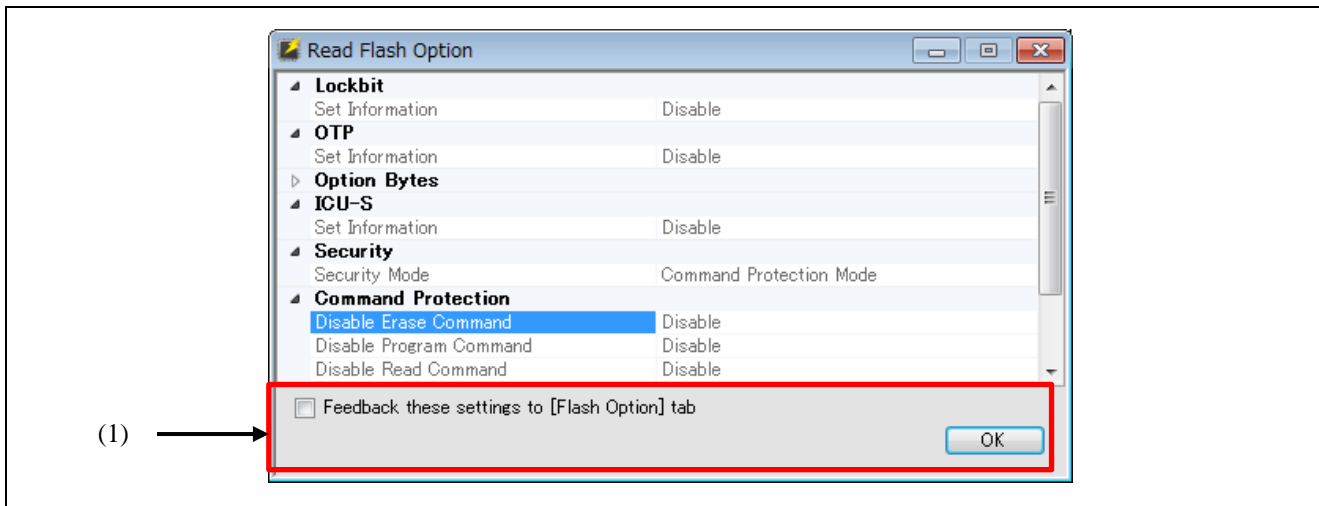


Figure 2-17 [Read Flash Option] Dialog Box

(1) Reflecting the set information

Selecting the checkbox and clicking on **OK** reflects the read contents on the [Flash Option] tabbed page.

2.4.3 [Help] Menu

The loading of a license file and the version of the RFP can be confirmed from this menu.

- [Import License]

Refer to the documentation which comes with the product for the usage of this menu item.

- [About]

The [About] message box is opened and displays the RFP version number.

Close the message box by clicking on **OK**

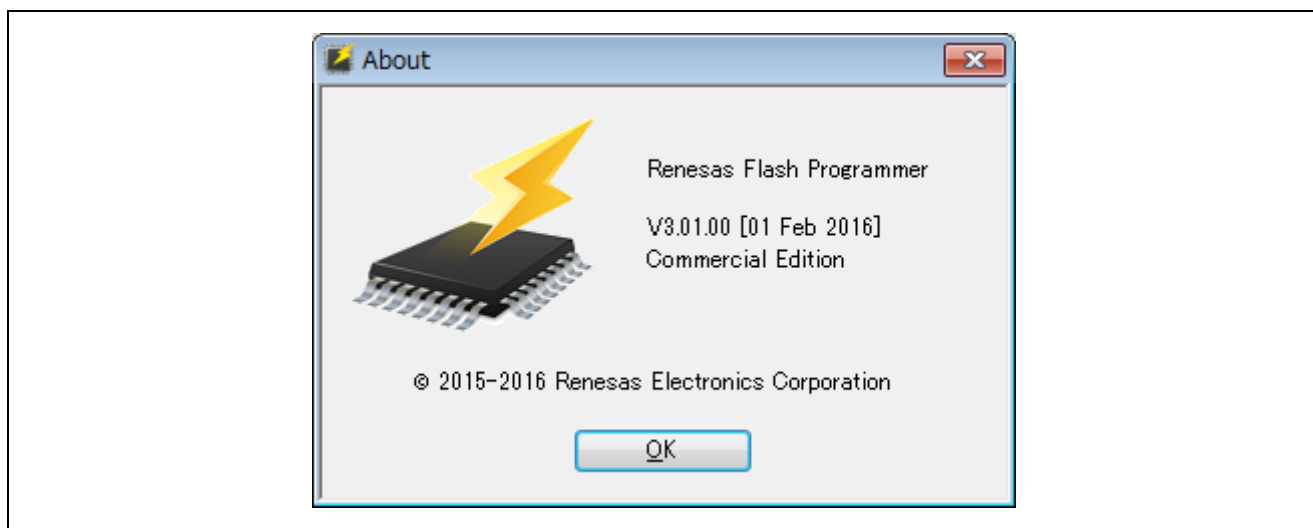


Figure 2-18 [About] Message Box

2.5 Command-Line Options

The RFP can be controlled from a command line.

The command line responds to the following options and parameters.

Table 2-3 Options and Parameters

Option	Description
Path to a project file	Loads a specified project file and starts the RFP.
/silent	(1) Loads a specified project file and starts the RFP in GUI-hidden mode. (2) The target MCU is overwritten according to the settings for operation in the project file. After processing, the RFP automatically exits and returns 0 or 1 when the end code is to reflect success or failure, respectively.
/file "a path for a program file"	Replaces the program file specified by the parameter with a "program file" in the project file and overwrites the target MCU. Regarding points for caution, refer to the notes under Caution in section 2.3.1.1. The /silent option is required to use this option.
/log "a path for a log file"	Outputs a log of operations by the RFP to a file (text format) specified as a parameter. An additional log file is made if a file already exists.

Remarks:

- Pathnames that include spaces must be enclosed in double-quotation marks ("). Also, the absolute path must be specified.
- When the /silent option is specified, no GUI is shown; processing similar to opening the specified project file and clicking on the start button once is performed.
- The character coding of the output in the log output window is UTF-8.

2.5.1 Example of Command Line Statements

The following is an example of command line statements in a batch file.

```
RFPV3.exe /silent "d:\rfp\project\sample.rpj" /file "d:\rfp\hex\sample_1.hex" /file
"d:\rfp\hex\sample_2.hex" /log "d:\rfp\log\sample.log"
ECHO Result Code: %ErrorLevel%
PAUSE
```

3. Operating the RFP

This chapter describes the basic operation of the RFP (the flow until a file is programmed) so that the user understands the series of basic operations using the RFP from activation of the system to programming of the target MCU.

The operations of creating, erasing, programming, and verifying a new project file are explained here. The conditions for the series of operations used in the examples are as follows.

- Target MCU: R5F104PJ (RL78/G14)
- Tool used: E1 emulator
- Connection method: 1-wire UART (single-wire UART)
- Communications speed: 1,000,000 bps
- Clock supply: No external clock (internal clock oscillator)
- Power supply: E1 (5.0 V, from USB VBUS)
- Flash options: Not used

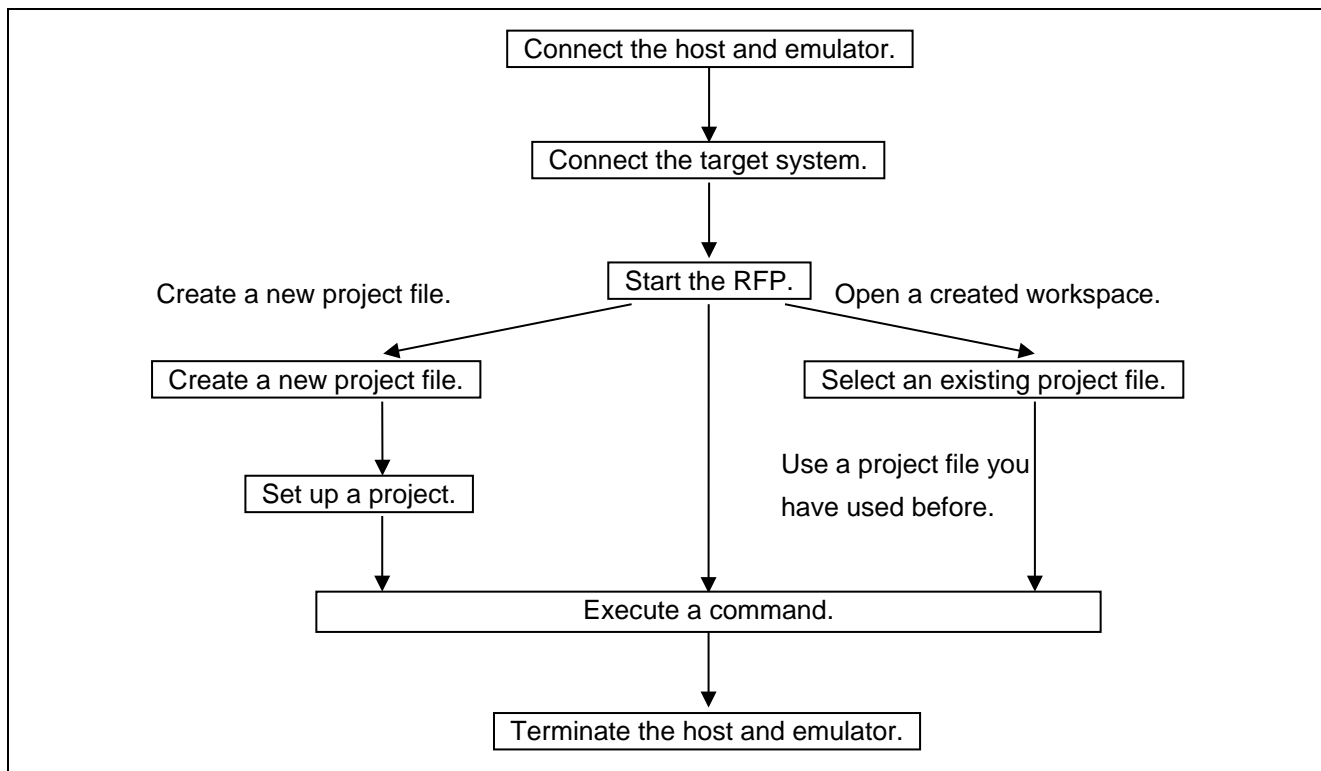


Figure 3-1 Flow of Operations

3.1 Flow of Operations

(1) Connecting the system

Connect the USB port of the host PC to the tool you will be using via the USB cable.

(2) Connecting the target system

Connect the target cable of the tool to the target system.

Caution: If power is to be supplied on the target system, be sure to connect the tool in use to the target system before switching the power on.

(3) Creating a project file

(1) When the RFP is started, the main window opens.

When [File] → [Create a new project] is selected from the menu bar, the [Create New Project] dialog box will appear.

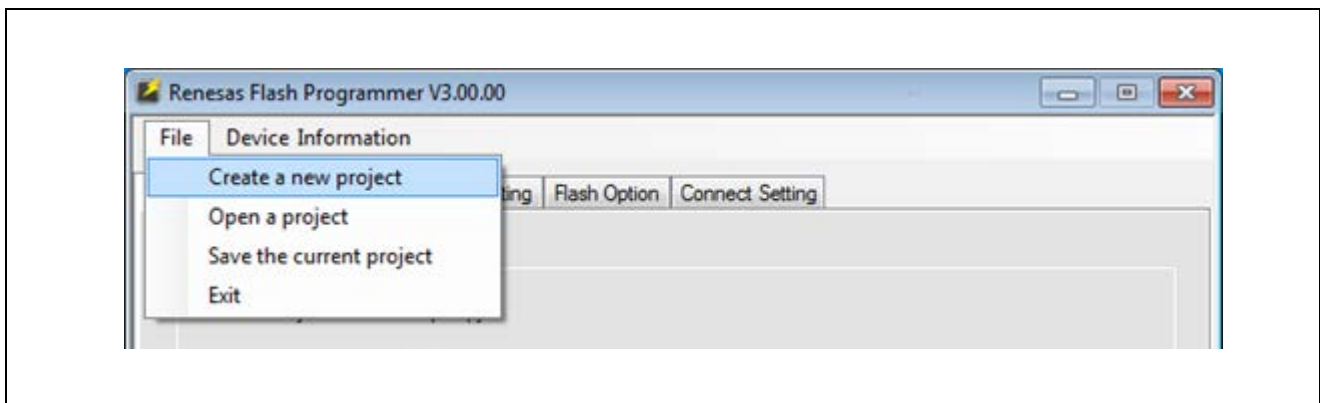


Figure 3-2 File Menu

(2) Select “RL78” for [Microcontroller].

Enter any project name (in this example, “sample”) for [Project Name] and specify any folder (e.g. D:\rfp\sample) for [Project Folder].

Select “E1” for [Tool]. For the RL78 family, [Interface] is fixed to “1 wire UART”.

Clicking on the **Tool Details...** button opens the [Tool Details] dialog box.

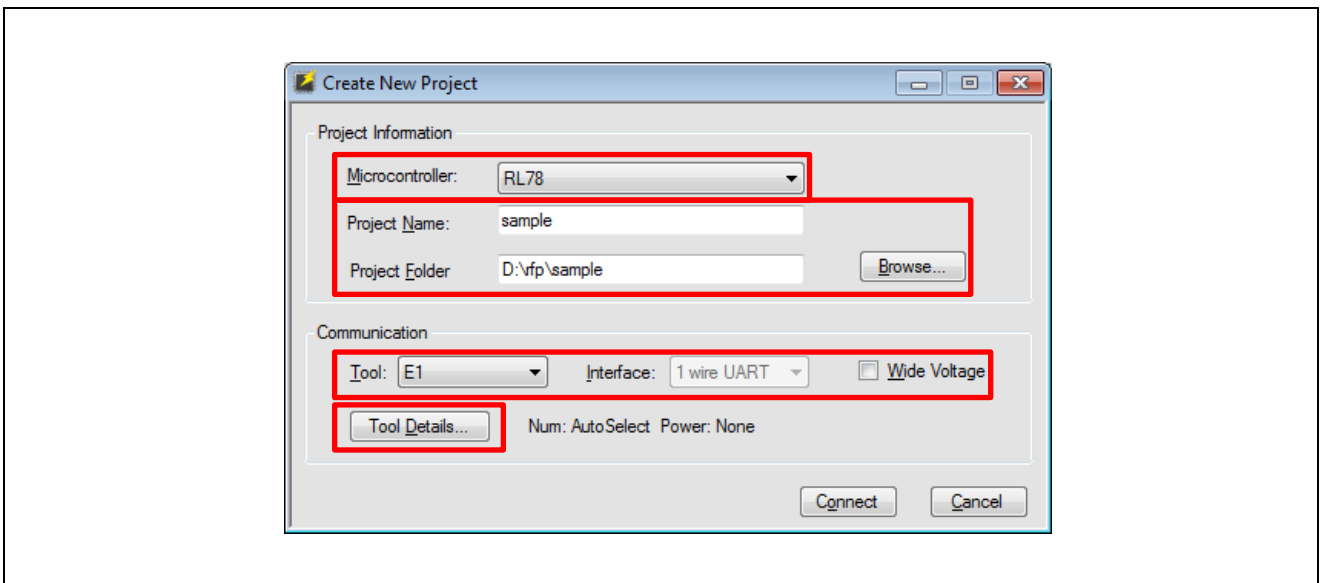


Figure 3-3 [Create New Project] Dialog Box

- (3) Select the [Select Tool] tabbed page and the [Auto Select] checkbox. After that, select “5.0V (USB VBUS)” in [Power Supply]. Click on **OK**.

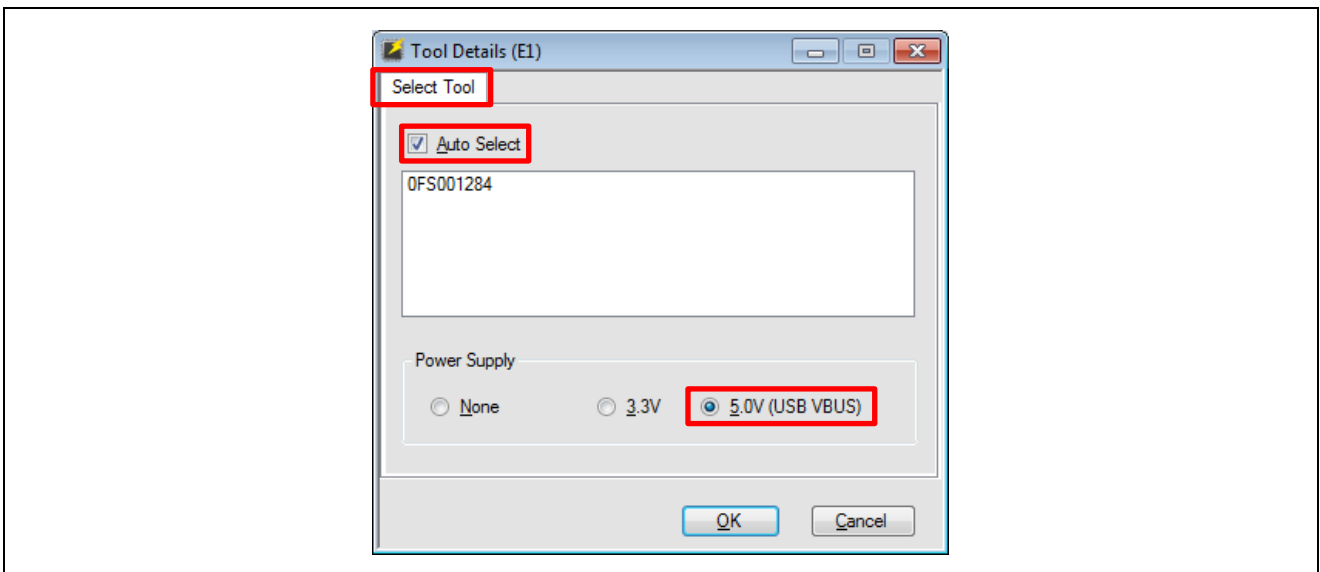


Figure 3-4 [Select Tool] Tabbed Page

(4) Information on the specified tool is displayed.

Check the contents (in this example, “Num: AutoSelect Power: 5.0V (USB VBUS)”) and click on **Connect**.

A project is created and the Main Window is shown.

Caution: Clicking on **Connect** starts the connection to the target MCU.

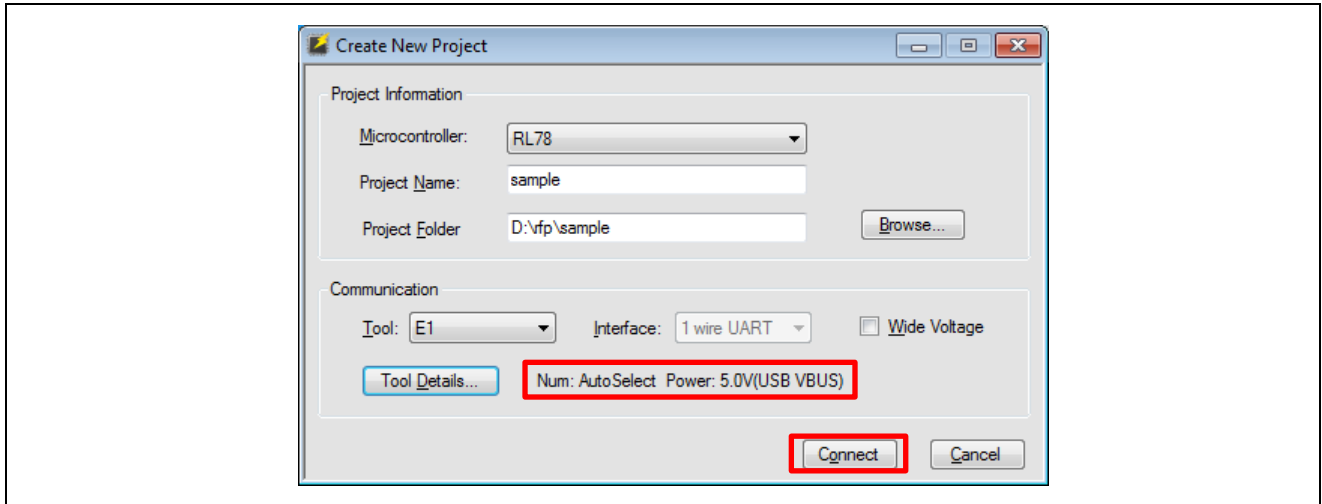


Figure 3-5 [Create New Project] Dialog Box

(5) When a project is created, the display of the main window changes with the addition of new tabbed pages. Check the information displayed in Project Information.

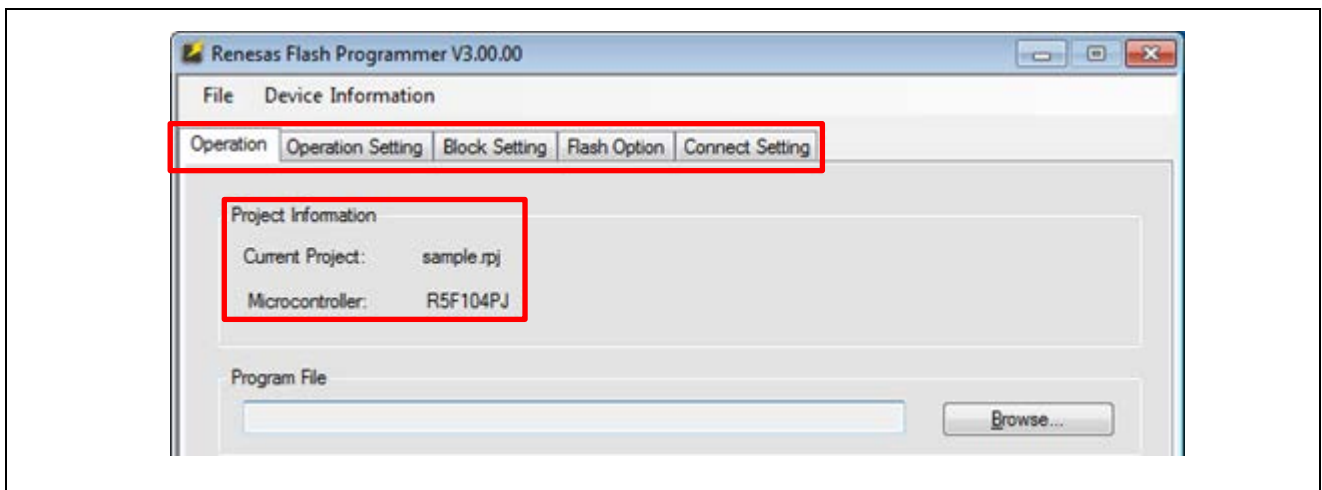


Figure 3-6 Main Window

(4) Detailed settings of the RFP

Operate the tabbed windows to make detailed settings of the RFP.

(1) Set the [Operation Setting] tabbed page.

Refer to “Command” and check that the “Erase”, “Program”, and “Verify” checkboxes have been selected, then click on the [Block Setting] tabbed page.

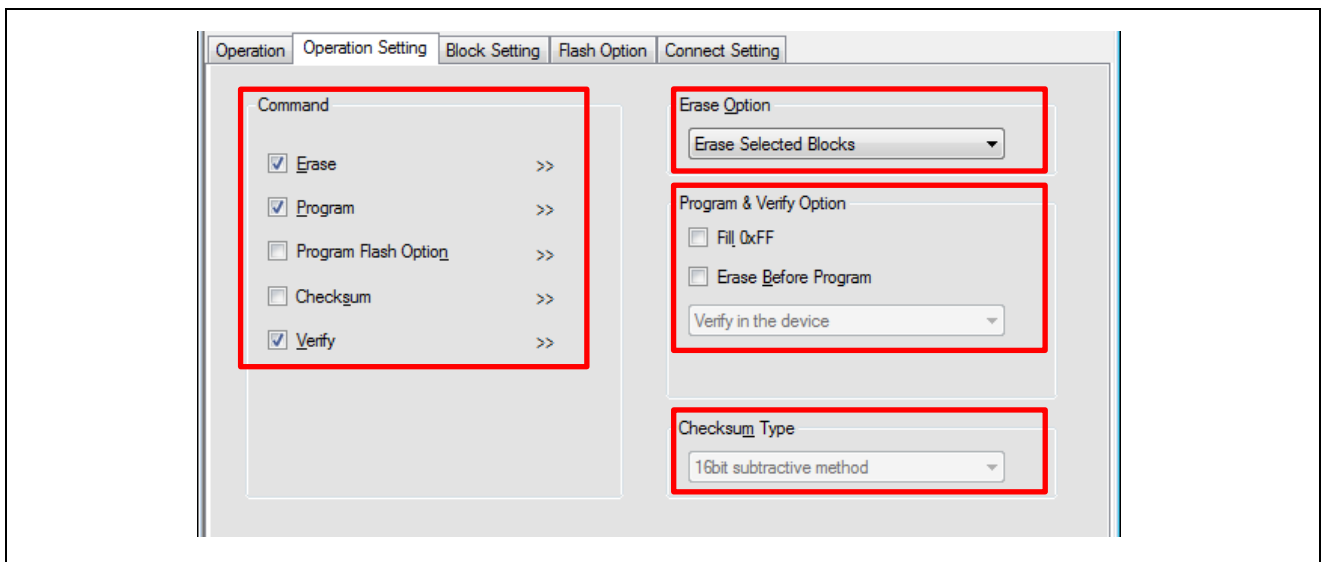


Figure 3-7 [Operation Setting] Tabbed Page

(2) Set the [Block Setting] tabbed page.

Check that all checkboxes in the “Erase” and “P.V” columns have been selected. Then click on the [Connect Setting] tabbed page.

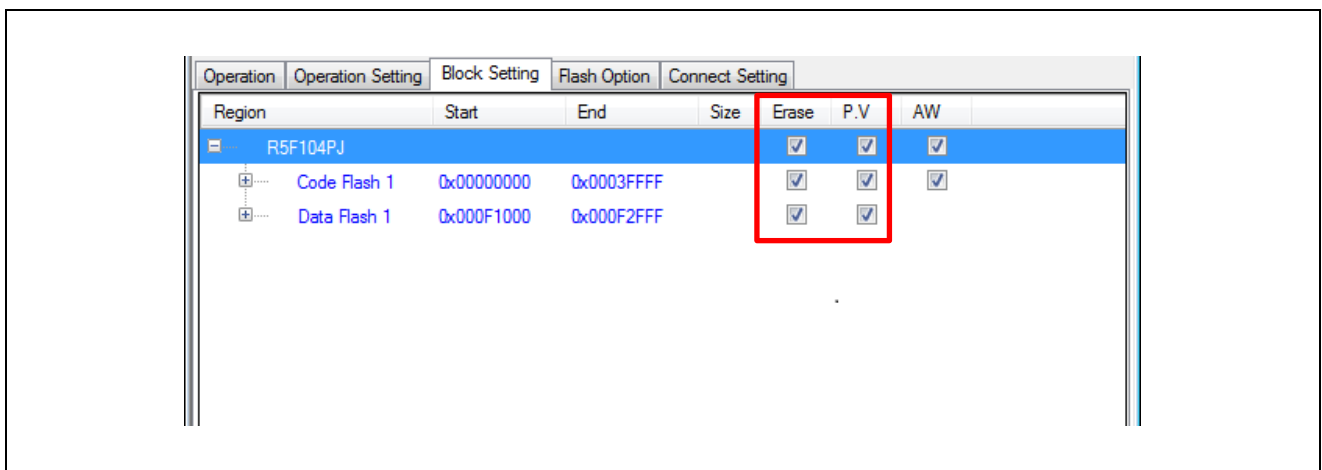


Figure 3-8 [Block Setting] Tabbed Page

- (3) Set the [Connect Setting] tabbed page.
Specify 1,000,000 bps for “Speed”, then click on the [Operation] tab.

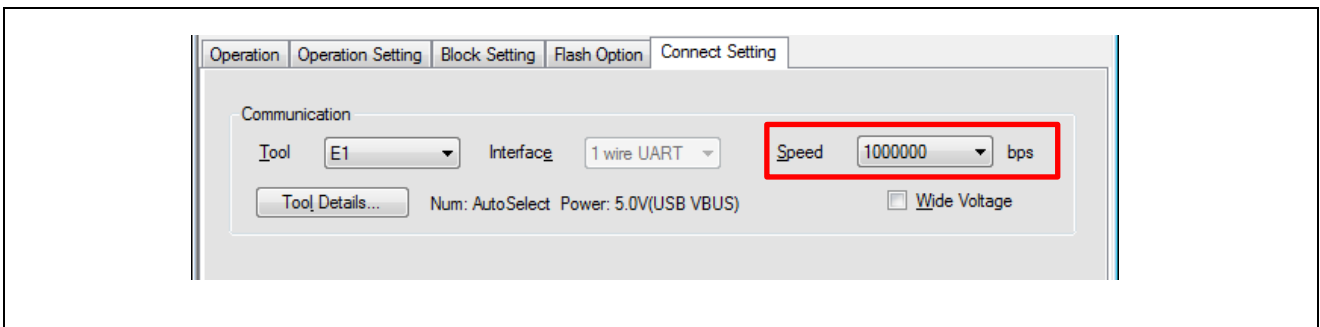


Figure 3-9 [Connect Setting] Tabbed Page

- (4) Check that the commands above **Start** are displayed as “Erase >> Program >> Verify”.

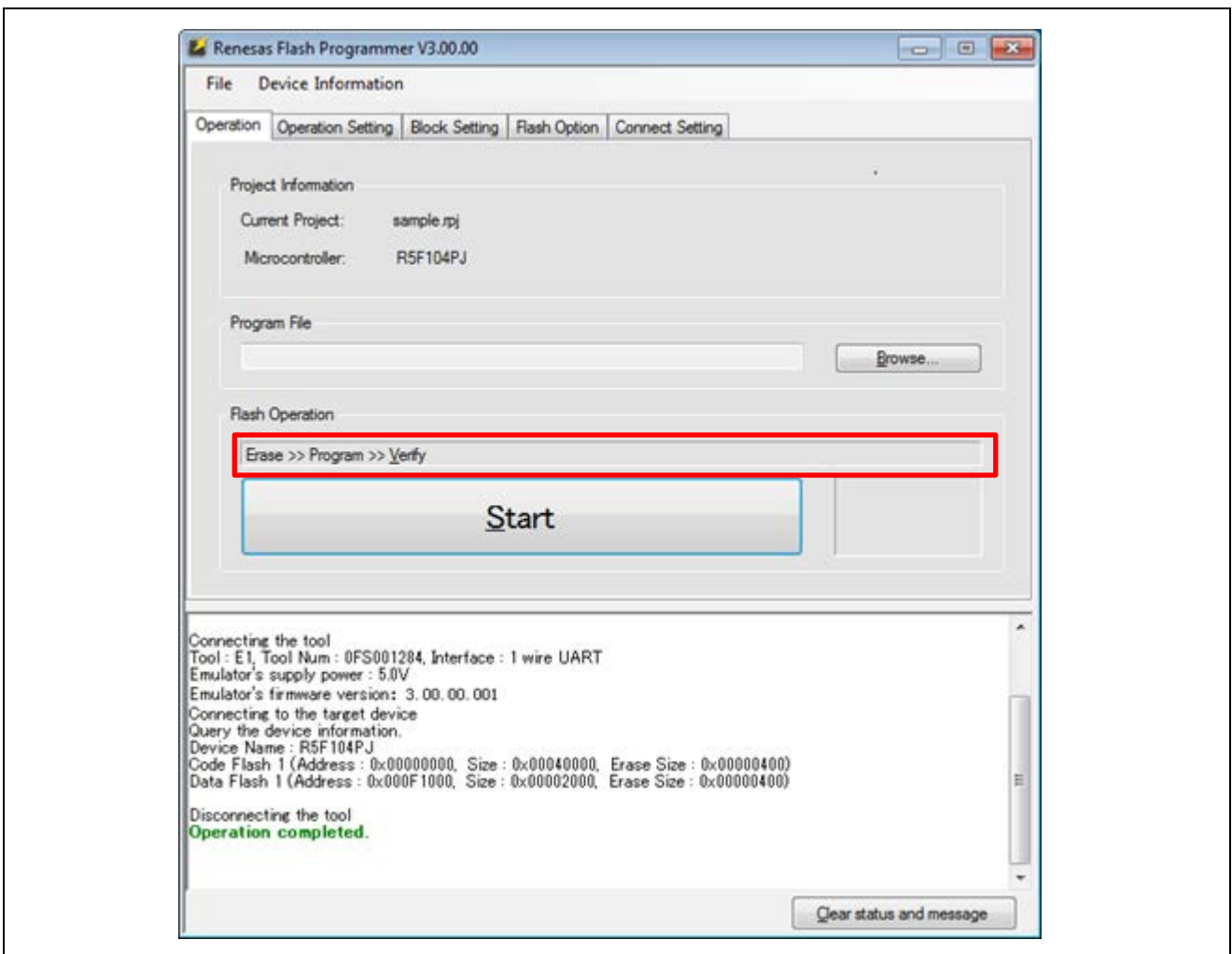


Figure 3-10 Main Window

(5) Selecting a program file

Click on **Browse...** in “Program File” on the [Operation] tabbed page and select a program file from among those displayed in the dialog box (in this example, “C:\RFP_ProgramFile\sample.hex”).

Check that the path to the program file selected in the “Program File” box is indicated.

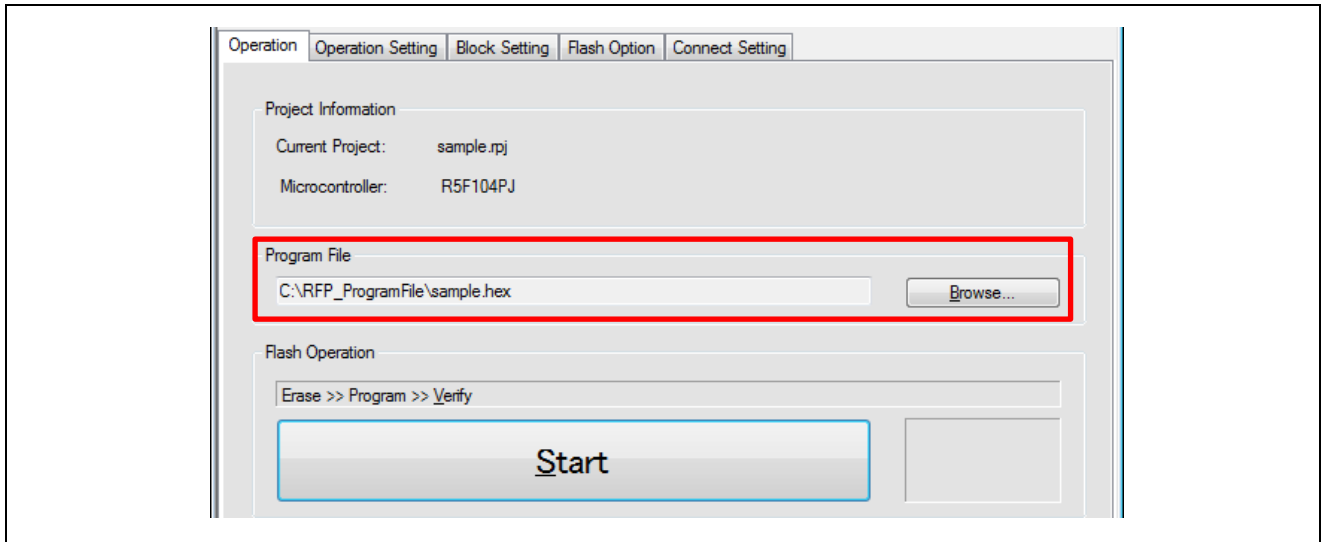


Figure 3-11 [Operation] Tabbed Page

(6) Executing a command

(1) Click on **Start** to execute the commands indicated above **Start**.

When sending of the commands is started, the [Progress Report] dialog box will appear.

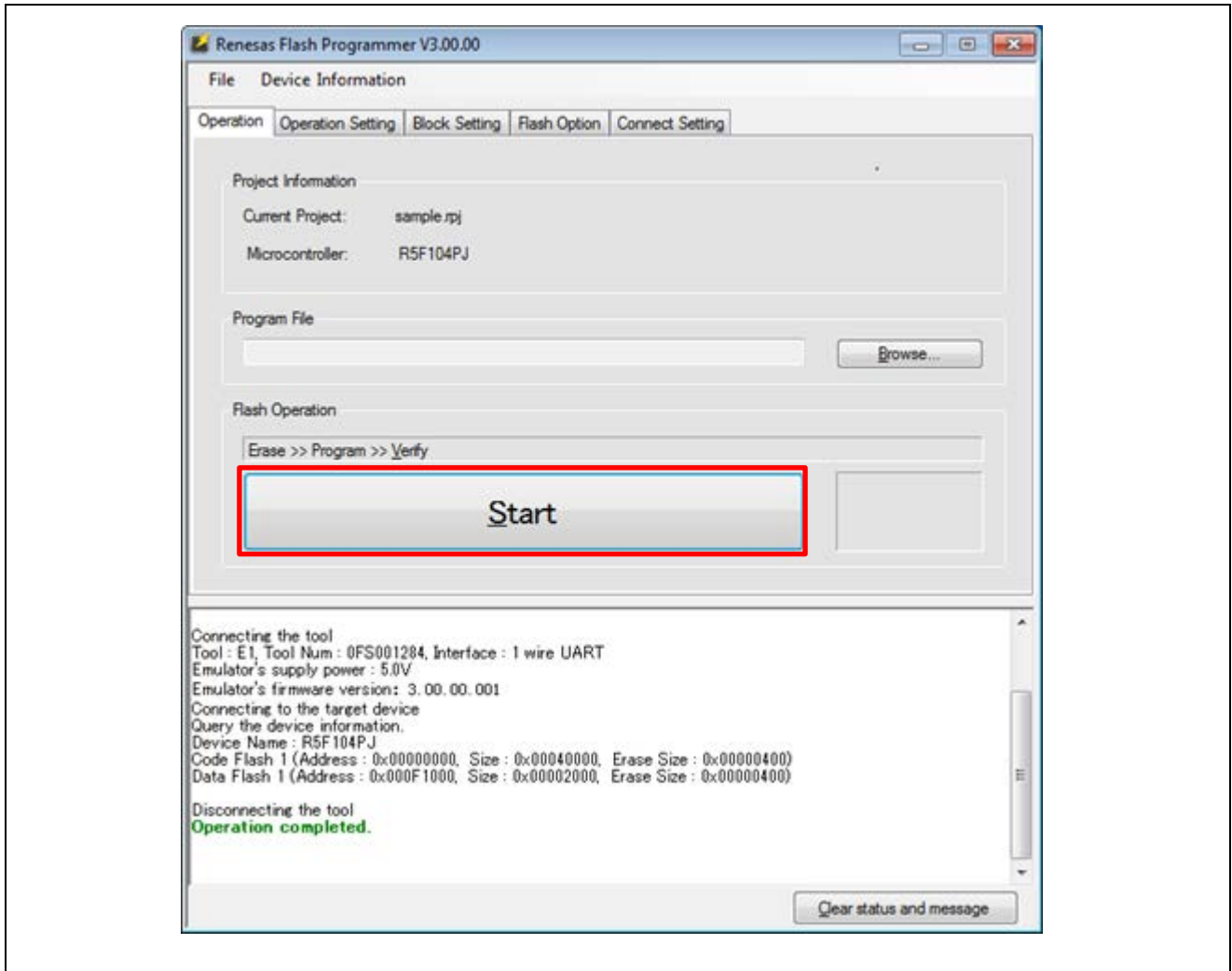


Figure 3-12 Main Window

(2) The [Progress Report] dialog box shows the state of command execution.

The state information is changed to “Run” and details of the processing are output as a log in the log output panel of the main window.

When command execution is completed, the [Progress Report] dialog box is automatically closed and the main window is displayed.

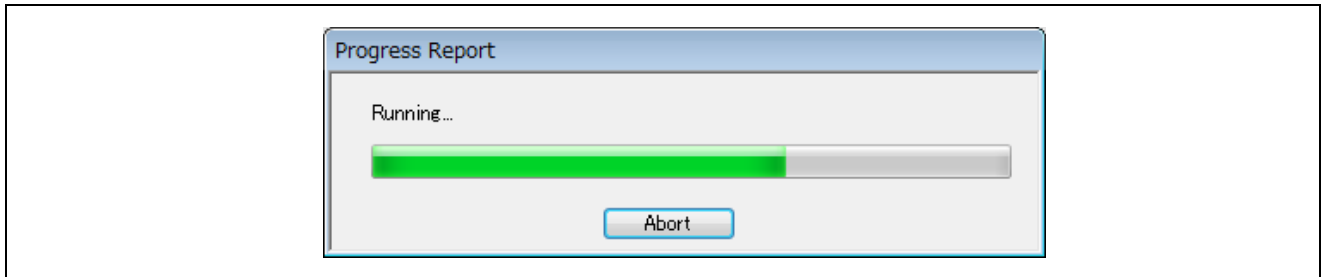


Figure 3-13 [Progress Report] Dialog Box

(3) When command processing is completed normally, the message “Operation completed.” is displayed in the log output panel and the state information is displayed as “OK”.

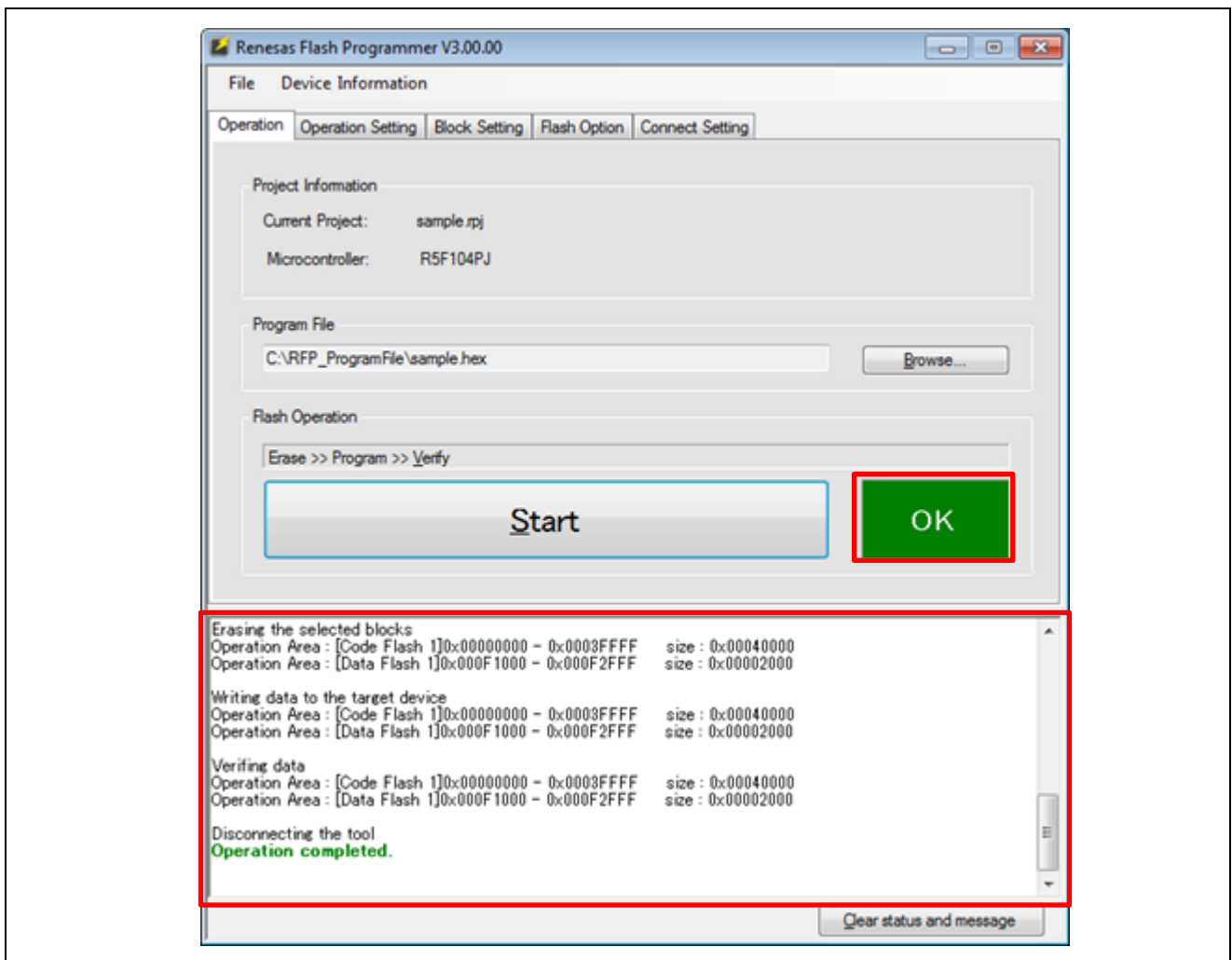


Figure 3-14 Main Window

(7) Exiting the system

(1) Remove the target cable of the tool in use from the target system.

Caution: If VDD is being supplied on the target system, turn off the supply power before removing the target cable of the tool in use from the target system.

(2) If you do not need to program another target MCU, select [File] → [Exit] and exit the RFP. Since all settings that you have made are saved in the project file, they can be reused when the RFP is restarted.

When you intend to continue to program other target MCUs, connect the target system (step (2)) and execute the required commands (step (6)).

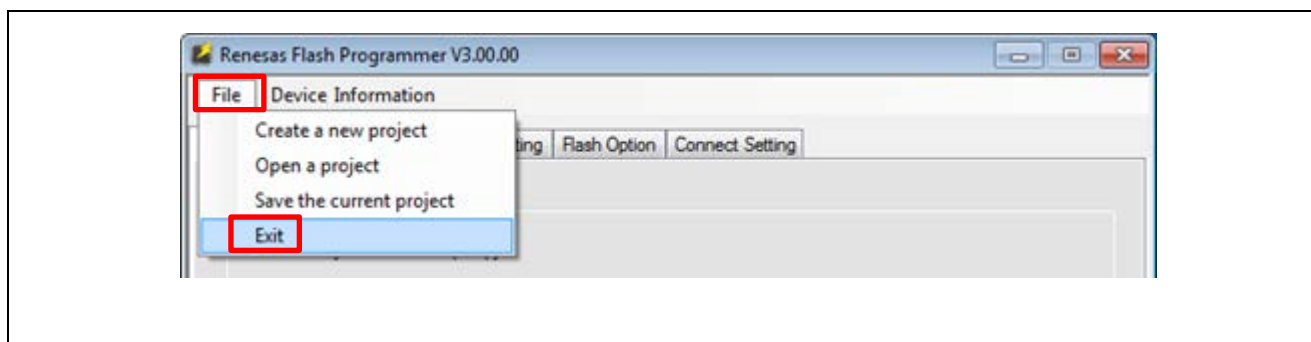


Figure 3-15 Main Window

(3) Remove the USB cable from the tool.

4. Troubleshooting

This chapter explains how to troubleshoot the RFP.

Remark If an error occurs during the sequence of a procedure, refer to this chapter and the user's manual of the target MCU. Also refer to the user's manual of the tool you are using and execute diagnostic tests. If this still does not resolve the problem, see the FAQ (at <<https://www.renesas.com/rfp>> -> Design Support -> FAQ). If you are using the product version of the RFP, contact Renesas via the Renesas website (<http://www.renesas.com/contact>) after writing down the PID number printed on the back of the CD case for the RFP.

4.1 Problems during Startup

This section explains how to troubleshoot problems that might occur in the processes from installation to startup.

- (1) When the tool is connected to the host PC via a USB interface, plug and play does not recognize the driver.

Cause:

The USB connector might not be inserted properly into the USB port of the host PC.

Action:

Check that the USB connector is fully inserted into the USB port of the host PC. Alternatively, disconnect the USB connector, and then insert the USB connector again after a while.

- (2) The tool is connected to the host PC but the power LED on the tool is not turned on.

Cause:

The USB port of the tool or the host PC might be defective.

Action:

Check the tool for defects by using the diagnostic tool for the tool in use. If you find a defect, consider repairs. If there is no defect, try connecting the tool to another host PC.

4.2 Problems during Operation

This section describes troubleshooting for problems that may occur during operation.

(1) When an error produces the message 'E3000105 There is no response from the device.'

Cause 1:

The connection with the target system might be wrong.

Action 1:

(1) Check that the connection with the target system is in accord with the recommended circuits shown in the user's manual of the tool in use. Also check that all required pins of the tool have been connected.

(2) For the RL78 family, check that the EVDD pins of the E1, E20, E2, or E2 Lite have been correctly connected.

Cause 2:

The operating mode of the target MCU might be wrong.

Action 2:

(1) Refer to the user's manual for the target MCU and check that all required mode pins are being handled correctly.

(2) For the RX family, check that the settings for I/O signals in the [Tool Details] dialog box match the wiring of the target system.

Cause 3:

The wrong MCU might be selected in the [Create New Project] dialog box.

Action 3:

Select the same MCU as the target MCU.

Cause 4:

The target MCU might not be receiving a clock signal.

Action 4:

Check the clock supply on the target system.

Cause 5:

Power might not be being supplied normally to the target MCU.

Action 5:

(1) Check the power supply setting.

(2) If the power is being supplied from the tool in use, the power might not be sufficient. In such cases, supply power from the target system. Confirm that the supply of power on the target system is possible.

(2) When USB Direct of the RX device does not work

Cause:

The wrong driver may be being recognized as the driver for booting via the USB. “Generic Boot USB Direct” should normally be recognized.

Action:

Install the correct driver through the following steps (Windows 7 is used in this example).

(1) When the wrong driver is being recognized, Windows Device Manager will show the following state.

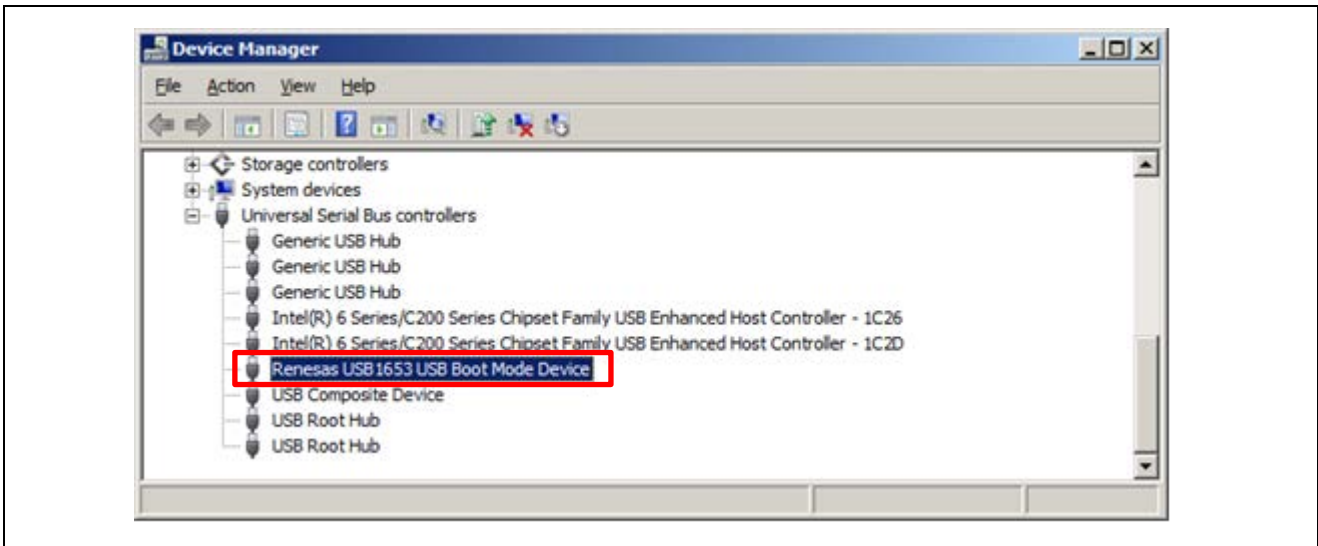


Figure 4-1 Device Manager

(2) When you select “Update Driver Software”, the following dialog box is displayed. Select “Browse my computer for driver software”.

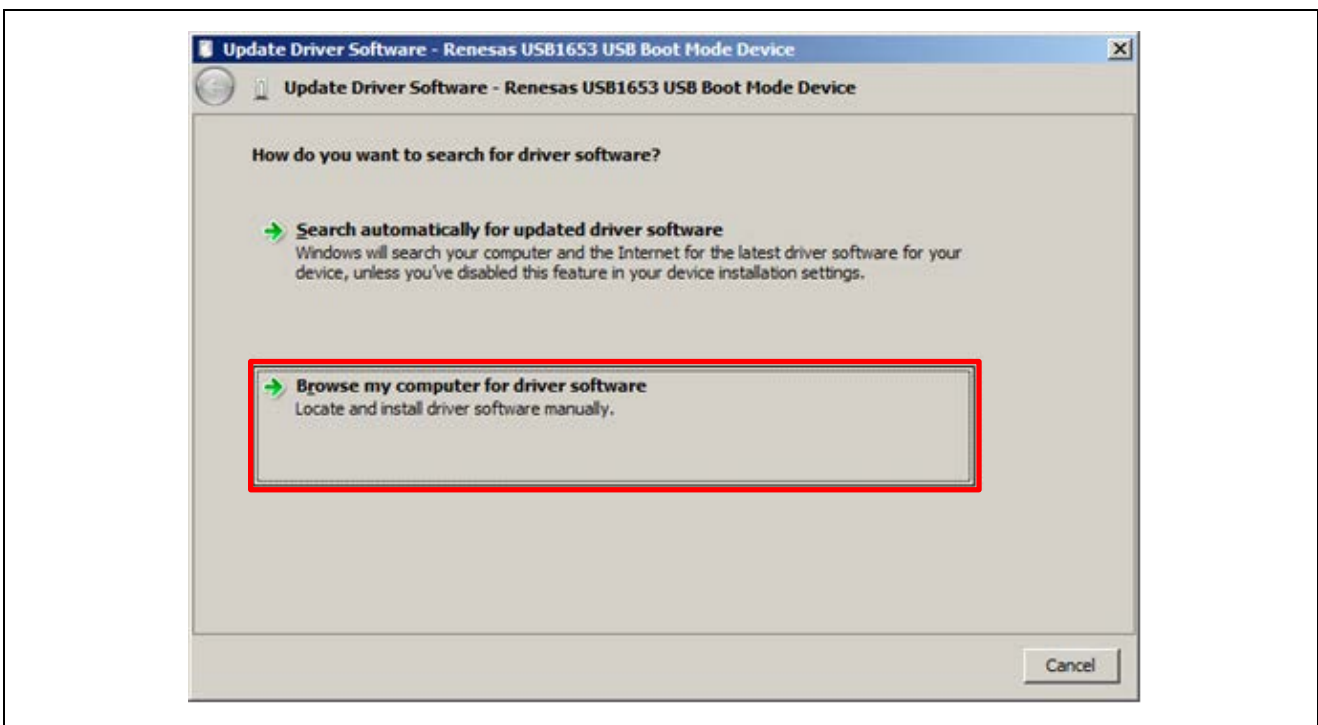


Figure 4-2 Update Driver Software

(3) Select “Let me pick from a list of device drivers on my computer”.

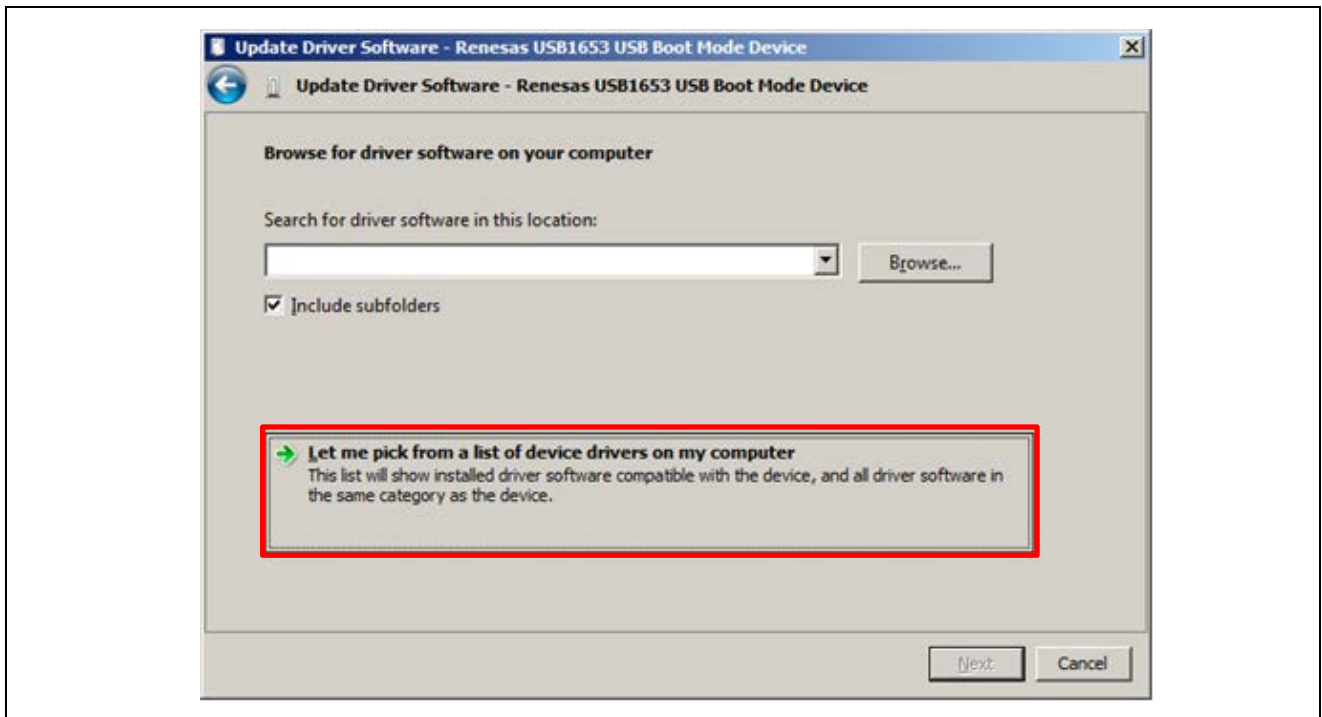


Figure 4-3 Update Driver Software

(4) The dialog box below is shown. If “Generic Boot USB Direct” is not displayed, use the RFP installer to re-install the USB driver for the USB boot MCU Type A. Select “Generic Boot USB Direct” and click on **Next**.

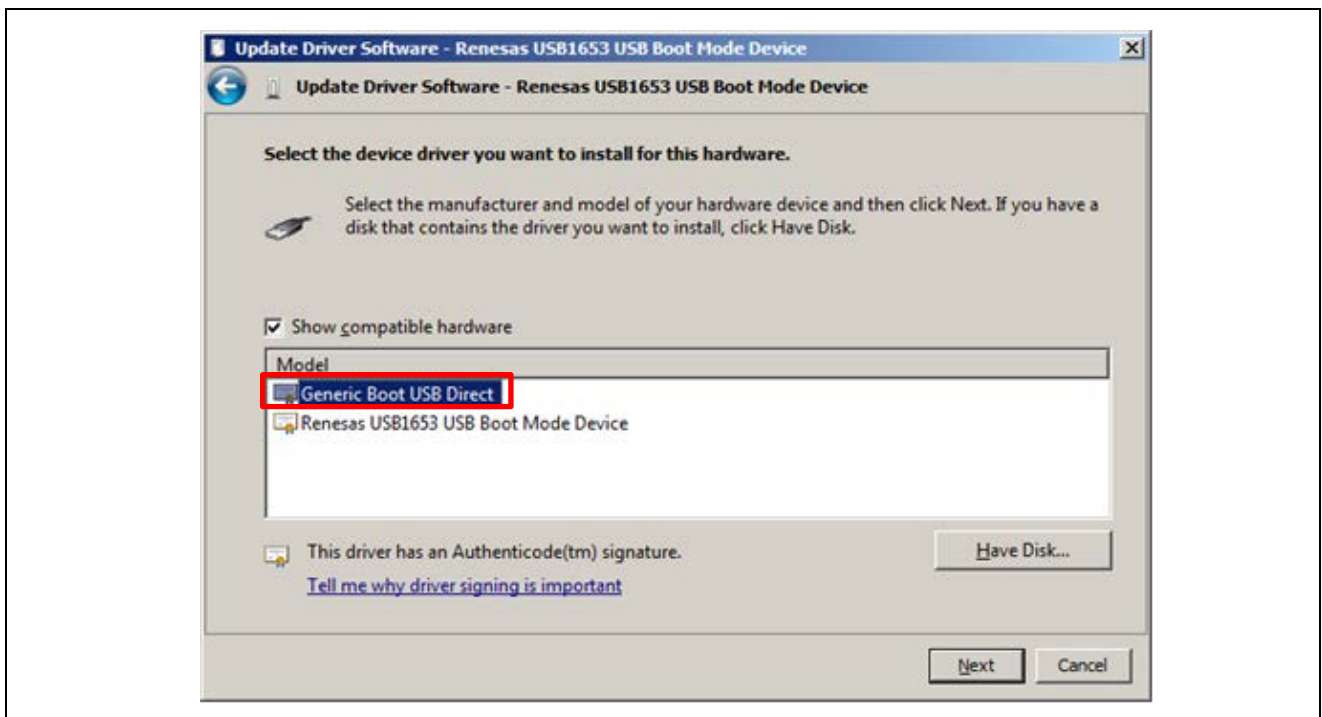


Figure 4-4 Update Driver Software

(5) Installation of the driver for booting via the USB is finished.

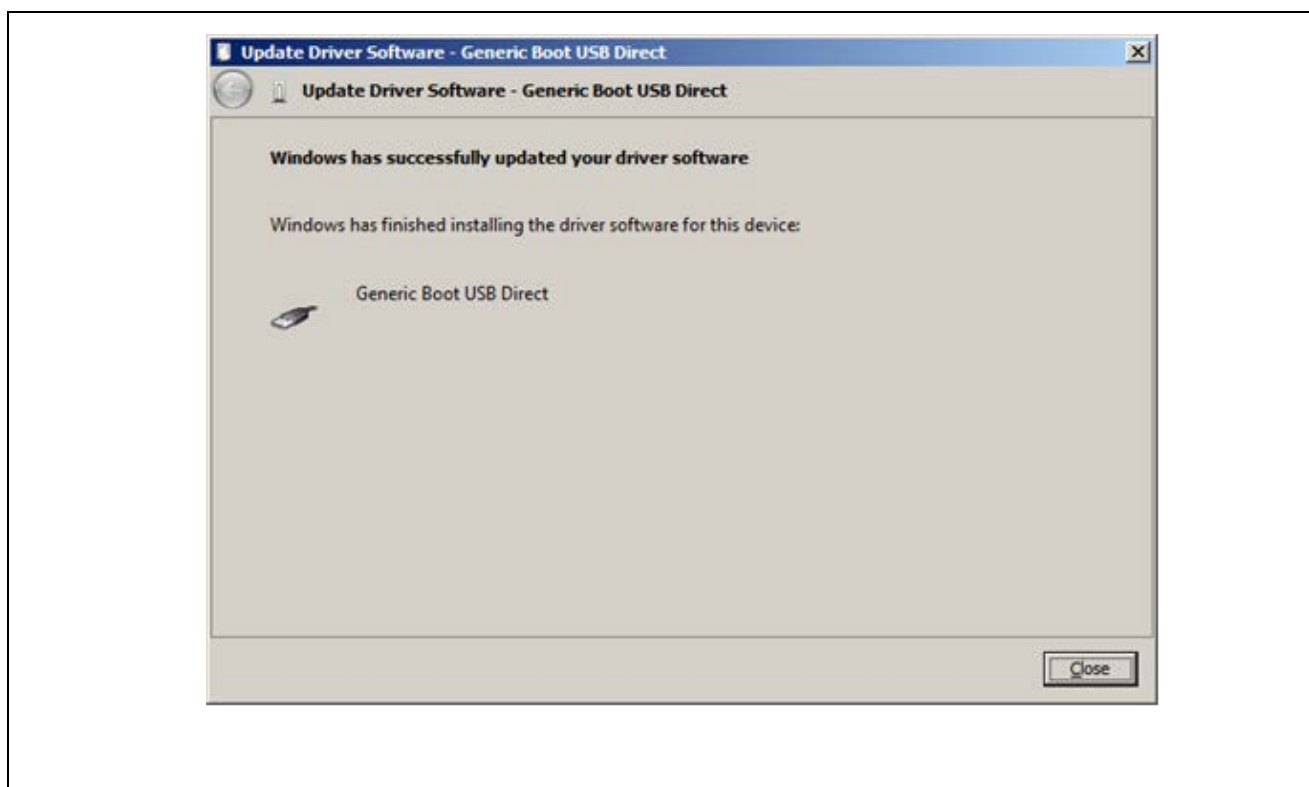


Figure 4-5 Update Driver Software

(3) Forgetting the ID code of the RX or entering the wrong ID code

Action:

Refer to the address in the program file at which the ID code was set.

For details, refer to the user's manual of the target MCU.

When the control code for the ID code is set so that the whole flash memory is erased after consecutively entering a wrong ID code three times, you can program the flash memory after returning to boot mode.

4.3 Problems during Communications

This section describes troubleshooting for problems that may occur during communications with the tool or the MCU.

(1) When the following errors occur while the tool is connected

- E3000203: An error occurred while connecting to the tool.
- E3000204: An error occurred while communicating with the tool.
- E3000205: An error occurred while updating the tool firmware.
- E3000206: An error occurred while initializing the tool.

Action 1:

When using USB Direct, Refer to section 4.2, Problems during Operation.

Action 2:

The tool you are using might have locked up. Try disconnecting and then reconnecting the USB cable.

Action 3:

The host PC might be unstable or the USB port might be broken. Restart the host PC or connect the tool to a USB port other than that you are trying to use.

Action 4:

On the E1, E20, or E2, the tool might be damaged. Refer to the user's manual of the tool you are using and run the self-diagnostic test.

(2) When the following errors occur during communications

- E300010C: Received data from the device is corrupted.
- E4000004: A framing error occurred while receiving data.
- E4000005: A parity error occurred while receiving data.
- E4000006: An overrun error occurred while receiving data.
- E1000004: A transmission data error occurred in the device.

Action:

The setting of the target MCU might be wrong or communications might not be stable. Check the following items.

- Check that there is no noise on the communications line.
- Check that the tool in use is properly connected with the target system.
- Check that unused pins are being handled correctly.
- Confirm that the correct input clock and transfer rate are selected. Stable programming might be achieved by setting a lower value for the transfer rate.

Remark Good communications may not be possible if you are using a USB-to-serial converter, a self-made cable, a self-made extension cable, or the like for connection with a tool.

4.4 Error Messages

This section describes error messages generated while the RFP is in use.

Table 4-1 Error Messages

E0000001	Message	The specified program file doesn't exist.
	Description	This error code and message are displayed when the last specified program file was not found. Specify a new program file.
E0000002	Message	The project file is not correct.
	Description	This error occurs when you attempt to open a corrupted or unsupported project file.
E0000003	Message	No program file has been specified.
	Description	To start processing, a program file must be specified.
E0000004	Message	The project file cannot be generated.
	Description	Change the folder to a location to which the project file can be written.
E0000005	Message	The project file pathname exceeds 260 characters.
	Description	The pathname exceeds the available number of characters. Change the project name or the location.
E0000006	Message	The project file name or location is not correct.
	Description	Change the project name or the location.
E0000007	Message	The specified crystal frequency is out of range. Valid values are between x.xx and x.xx.
	Description	The value entered exceeds the valid range. Refer to the user's manual of the target MCU and enter a correct value.
E0000009	Message	The input is not correct.
	Description	The value entered is wrong. Enter the value again in the correct format.
E0000011	Message	There is no flash operation specified under "Command" on the "Operation Setting" tabbed page.
	Description	Select one or more commands on the [Operation Setting] tabbed page.
E0000012	Message	No blocks have been selected for the current operation.
	Description	Check one or more blocks for the operation on the [Block Setting] tabbed page.
E0000013	Message	No flash options have been set.
	Description	There are no target options when flash options are to be programmed. Change at least one setting to [Set] on the [Flash Option] tabbed page.
E0000015	Message	The parameter file is not correct.
	Description	The project might have been damaged.
E0000016	Message	The program file is not correct.
	Description	This error occurs when a program file that is corrupted, is in a non-supported format, or contains entries in a non-supported format is specified.
E0000017	Message	An incorrect command line parameter was specified.
	Description	The command entered was wrong.

E000018	Message	The combination of file type is incorrect.
	Description	This error occurs when an RPI or HCUHEX file is included in a multiple program file selection.
E000019	Message	Too many files selected.
	Description	This error occurs when five or more files have been selected in multiple program file selection.
E0000101	Message	No unique code file specified.
	Description	This error occurs when a definition file is not specified on the unique code tabbed page.
E0000102	Message	The unique code file is not correct.
	Description	This error occurs when the specified unique code file is corrupted or is not in the correct format.
EF000001	Message	Not enough memory.
	Description	Processing cannot be continued since there is not enough memory in the host PC.
E3000008	Message	This file is corrupt and cannot be opened (line X).
	Description	This error occurs when a program file which contains a line that is corrupted, is in a non-supported format, or contains entries in a non-supported format is specified. Check the format of the program file.
E3000101	Message	The data at 0xXXXXXXXX already exist and cannot be overwritten.
	Description	This error occurs when an attempt is made to handle data having overlapping addresses. Check for data having overlapped addresses in the program file.
E3000103	Message	The format of option data is invalid.
	Description	The target MCU does not support the format of the option data in the specified program file.
E3000104	Message	The data address is outside the 32-bit address space.
	Description	This error occurs when processing of data beyond the 32-bit address space is attempted.
E3000105	Message	The device is not responding.
	Description	This error occurs when there is no response from the target MCU during connection to the target system. Refer to section 4.2, Problems during Operation.
E3000106	Message	This device is not supported.
	Description	An attempt was made to connect a non-supported target MCU.
E3000107	Message	This device does not match the connection parameters.
	Description	An attempt was made to connect an MCU which does not match the target MCU that was acquired when the project was created. Check that the target MCU is correct or re-create the project.
E300010A	Message	The data at address 0xXXXXXXXX do not match.
	Description	The data in the program file might be different from that programmed in the target MCU.
E300010B	Message	The option data do not match.
	Description	The flash option data in the program file might be different from that programmed in the target MCU. This error will occur when the flash option data is reflected in the MCU after a reset.

E300010C	Message	Data received from the device are corrupted.
	Description	Refer to section 4.3, Problems during Communications.
E300010D	Message	The device sent an unrecognized response. (0xXX)
	Description	This error occurs when unexpected data were received from the MCU. Check that the MCU was reset before connection. Refer to section 5.6, Connecting through a COM port or USB Direct.
E3000201	Message	Cannot find the specified tool.
	Description	This error occurs when the tool specified by a project could not be found.
E3000202	Message	The specified tool is already in use.
	Description	This error occurs when the specified tool is already in use by another program.
E3000203	Message	An error occurred while connecting to the tool.
	Description	Refer to section 4.3, Problems during Communications.
E3000204	Message	An error occurred while communicating with the tool.
	Description	Refer to section 4.3, Problems during Communications.
E3000205	Message	An error occurred while updating the tool firmware.
	Description	Refer to section 4.3, Problems during Communications.
E3000206	Message	An error occurred while initializing the tool.
	Description	Refer to section 4.3, Problems during Communications.
E3000207	Message	Power is not being supplied to the user system.
	Description	Turn on the target system before connecting the tool. Check the connection of the tool after you have turned the target system on.
E4000001	Message	Power is already been supplied on the user system.
	Description	This error occurs when the power-supply function of the tool is selected for use but a power-supply voltage that is already present is detected on the user board. Check the power-supply setting.
E4000002	Message	Cannot release a reset signal.
	Description	This error occurs when the reset signal of the target MCU going to the high level has not been detected while the E1, E20, E2, or E2 Lite is in use and the target MCU is connected. Check the reset signal of the target MCU.
E4000003	Message	A timeout error occurred.
	Description	This error occurs when a problem in communications between the target MCU and the RFP (host PC) arises for some reason, resulting in a timeout. The RFP allows you to set the bit rate, but communications cannot proceed if the specified bit rate does not match the actual settings of the target MCU. Check the following points. (1) Bit rate: Check the operating frequency of the MCU to see if the bit rate exceeds the allowable communications rate and if the bit rate is appropriate. (2) Clock settings: Check if the clock settings for the MCU in the RFP match the actual clock of the target MCU. (3) Connection between the target system and the PC: Good communications may not be possible if you are using a USB-to-serial converter, a self-made cable, a self-made extension cable, or the like for connection with a tool.
E4000004	Message	A framing error occurred while receiving data.
	Description	Refer to section 4.3, Problems during Communications.
E4000005	Message	A parity error occurred while receiving data.
	Description	Refer to section 4.3, Problems during Communications.

E4000006	Message	An overrun error occurred while receiving data.
	Description	Refer to section 4.3, Problems during Communications.

Table 4-2 Error Messages Due to Errors in the MCU

E1000002	Message	A fatal error occurred during control of the flash memory. (Response XX:XX)
	Description	–
E1000004	Message	A transmission data error occurred in the device. (Response XX:XX)
	Description	Refer to section 4.3, Problems during Communications.
E1000005	Message	An input frequency error occurred in the device. (Response XX:XX)
	Description	This error occurs when the value specified for the input clock signal cannot be used in the MCU. For details, refer to the manual of the target MCU.
E1000006	Message	A frequency error occurred in the device. (Response XX:XX)
	Description	This error occurs when the MCU failed to make the clock settings. Check the value of the input clock or the settings of the target MCU. For details, refer to the manual of the target MCU.
E1000007	Message	An authentication code error occurred in the device. (Response XX:XX)
	Description	This error occurs when an ID code different from that set in the target MCU is entered (the message is the same for an incorrect access password). If you have forgotten the configured ID code, connection to the MCU for serial programming is basically disabled. However, erasure of the whole flash memory is enabled as an exception in some MCUs; for details, refer to the user's manual of the MCU.
E1000008	Message	An address error occurred in the device. (Response XX:XX)
	Description	–
E1000009	Message	A baudrate error occurred in the device. (Response XX:XX)
	Description	This error occurs when a bit rate which the MCU cannot generate is selected. Check the settings for the bit rate and the clock.
E100000A	Message	A sequencer error occurred in the device. (Response XX:XX)
	Description	This error will occur in the following cases. <ul style="list-style-type: none"> • When an operation is attempted in an area reserved by the security function of the MCU • When the MCU is malfunctioning
E100000C	Message	A serial programming connection is prohibited for this device.
	Description	This error occurs when the security setting to prohibit connection has been made. The serial programming function then cannot be used.
E100000D	Message	A flow error occurred in the device. (Response XX:XX)
	Description	–
E100000E	Message	A protection error occurred in the device. (Response XX:XX)
	Description	Execution of a specified command might have failed because the security setting to prohibit it in the target MCU has already been made. Although some security flags can be cleared by erasing the chip, others cannot. For details, refer to the manual of the target MCU.
E100000F	Message	A blank error occurred in the device. (Response XX:XX)
	Description	–

E1000010	Message	A verification error occurred in the device. (Response XX:XX)
	Description	<ul style="list-style-type: none"> • Different data might have been written to the program file and the target MCU. • There might have been a failure in verification due to a defect in the flash memory.
E1000011	Message	A write error occurred in the device. (Response XX:XX)
	Description	<p>This error will occur in the following cases.</p> <ul style="list-style-type: none"> • An attempt might have been made to overwrite an area already containing data with different data. • There might have been a failure in programming due to a defect in the flash memory.
E1000012	Message	An erasure error occurred in the device. (Response XX:XX)
	Description	<p>This error code and message are displayed when erasure of data in the flash memory of the MCU was attempted but failed. Possible causes of the error (failure to erase) include:</p> <ol style="list-style-type: none"> (1) The power-supply voltage for the MCU not being correct. (2) The MCU being unable to operate properly because of the pin settings. (3) The MCU having been damaged for some reason. (4) Communication between the MCU and the PC having failed*, so the command was not executed. <p>Check the items (1) through (4) above.</p> <p>*Good communications may not be possible if you are using a USB-to-serial converter, a self-made cable, a self-made extension cable, or the like for connection with a tool.</p>

5. Points for Caution

This chapter describes points for caution regarding the RFP.

5.1 Manipulating the User Boot Mat

Applies to: RX610

If a valid ID code has not been set before the MCU is connected (i.e. the device is not protected), manipulation of the user boot mat is not possible on completion of the connection. To enable manipulation of the user boot mat, set a valid ID code before connecting the MCU.

5.2 Host PC

Applies to: All MCUs

Some tools (the E1, E20, E2, E2 Lite, serial interface, and USB interface) may not work with the host PC you are using. Check the connection between the tool and the host PC. If the tool still does not work, you may need to use a different host PC.

5.3 USB-to-Serial Converter

Applies to: All MCUs

We do not recommend the use of a USB-to-serial converter because it may cause delays in timing and data being lost due to the specifications of the converter.

5.4 Check before Connection

Applies to: All MCUs

Connection of the target MCU in the cases listed below may damage the tool in use or the target system due to conflicts between signals. Be sure to check that the settings and circuit connection are correct.

- The type of the target MCU to be connected was mistaken.
- The wrong recommended circuit was used for the target MCU or the circuit being used was in error.
- The output setting of an I/O port pin was wrong while the setting is for manual entry to boot mode.
- The power-supply setting of the tool was wrong.

5.5 Erase Chip of the RH850 Family

Applies to: RH850

When a chip is erased, the configuration data are cleared after all other data have been erased. In other words, the option settings of the MCU are all erased. Since all settings, including the settings at the time of shipment, are erased at this time, be sure to make the required settings at the same time.

In addition, processing to clear the configuration data is prohibited in some MCUs. When you wish to erase a chip, refer to the user's manual of the target MCU in use and determine whether or not processing to clear the configuration data can be used.

5.6 Connecting through a COM port or USB Direct

Applies to: RX, RH850, Renesas Synergy

When the connection is through a COM port or USB Direct, the RFP does not control the reset pin of the MCU. Reset the MCU in advance when connecting with a target MCU.

5.7 Auto-padding with 0xFF

Applies to: All MCUs

When an amount of data is less than the minimum unit for writing to a flash memory, the data are always padded with 0xFF before writing.

Applies to: RX, Renesas Synergy

Note that parts with no data will be padded with 0xFF when writing to the configuration setting area.

Renesas Flash Programmer V3.02 User's Manual

Publication Date: Rev.2.00 Dec 28, 2016

Published by: Renesas Electronics Corporation

**SALES OFFICES**

Renesas Electronics Corporation

<http://www.renesas.com>Refer to "<http://www.renesas.com/>" for the latest and detailed information.**Renesas Electronics America Inc.**2801 Scott Boulevard Santa Clara, CA 95050-2549, U.S.A.
Tel: +1-408-588-6000, Fax: +1-408-588-6130**Renesas Electronics Canada Limited**9251 Yonge Street, Suite 8309 Richmond Hill, Ontario Canada L4C 9T3
Tel: +1-905-237-2004**Renesas Electronics Europe Limited**Dukes Meadow, Millboard Road, Bourne End, Buckinghamshire, SL8 5FH, U.K
Tel: +44-1628-585-100, Fax: +44-1628-585-900**Renesas Electronics Europe GmbH**Arcadiastrasse 10, 40472 Düsseldorf, Germany
Tel: +49-211-6503-0, Fax: +49-211-6503-1327**Renesas Electronics (China) Co., Ltd.**Room 1709, Quantum Plaza, No.27 ZhiChunLu Haidian District, Beijing 100191, P.R.China
Tel: +86-10-8235-1155, Fax: +86-10-8235-7679**Renesas Electronics (Shanghai) Co., Ltd.**Unit 301, Tower A, Central Towers, 555 Langao Road, Putuo District, Shanghai, P. R. China 200333
Tel: +86-21-2226-0888, Fax: +86-21-2226-0999**Renesas Electronics Hong Kong Limited**Unit 1601-1611, 16/F., Tower 2, Grand Century Place, 193 Prince Edward Road West, Mongkok, Kowloon, Hong Kong
Tel: +852-2265-6688, Fax: +852 2886-9022**Renesas Electronics Taiwan Co., Ltd.**13F, No. 363, Fu Shing North Road, Taipei 10543, Taiwan
Tel: +886-2-8175-9600, Fax: +886 2-8175-9670**Renesas Electronics Singapore Pte. Ltd.**80 Bendemeer Road, Unit #06-02 Hyflux Innovation Centre, Singapore 339949
Tel: +65-6213-0200, Fax: +65-6213-0300**Renesas Electronics Malaysia Sdn.Bhd.**Unit 1207, Block B, Menara Amcorp, Amcorp Trade Centre, No. 18, Jln Persiaran Barat, 46050 Petaling Jaya, Selangor Darul Ehsan, Malaysia
Tel: +60-3-7955-9390, Fax: +60-3-7955-9510**Renesas Electronics India Pvt. Ltd.**No.777C, 100 Feet Road, HAL II Stage, Indiranagar, Bangalore, India
Tel: +91-80-67208700, Fax: +91-80-67208777**Renesas Electronics Korea Co., Ltd.**12F., 234 Teheran-ro, Gangnam-Gu, Seoul, 135-080, Korea
Tel: +82-2-558-3737, Fax: +82-2-558-5141

Renesas Flash Programmer V3.02



Renesas Electronics Corporation

R20UT3841EJ0200