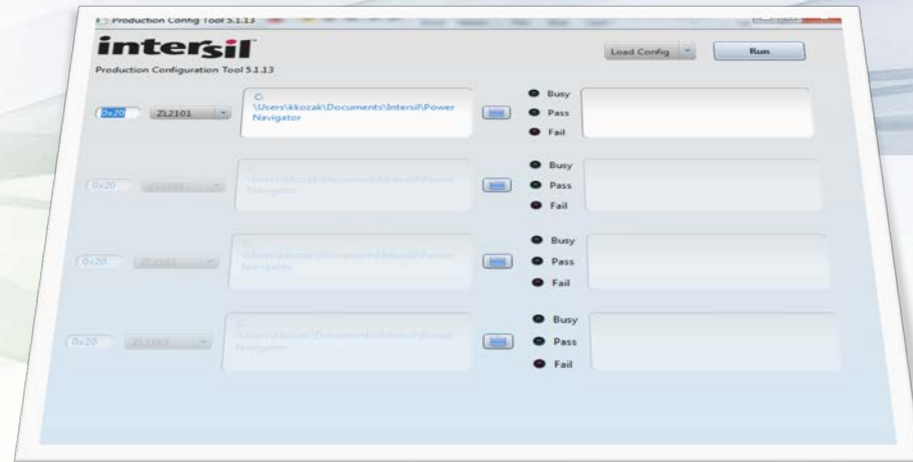


Production Configuration Utility

Version 5.3.45

USER GUIDE



PCT Overview

- **What is PCT?**

- Production configuration tool for quick loading and verification of configuration files into Intersil Digital Power controller/modules.

- **Features**

- Program or verify configuration for multiple devices at the same time
- Supports all devices supported by PowerNavigator
- Data logging to error.txt file

- **Both standard Configuration files and production HEX files can be used**

- PCT will load and verify either format

PCT 5.3.45 – Supported Devices

- **Integrated FET Digital Regulators: ZL2101, ZL2102**
- **Digital Controllers: ZL6105, ZL8101, ZL880x, ZLS4010**
- **Digital Multiphase: ISL6388, ISL6398, ISL681xx, ISL691xx**
- **Digital Modules: ZL9006M, ZL9010M, ZL9101M, ZL9117M, ISL827xM**

Instructions

- **Installation**

- Double-click “configCheckSetup.exe” and follow instructions
- Installer will place icon on Desktop and inside Start Menu

- **Running**

- Connect ZLUSBEVAL3Z dongle to computer and power system’s PMBus header
- Ensure input voltage is provided to all devices to be programmed.

Device Selection Screen

Production Config Tool 5.3.45

File

intersil™
Production Configuration Tool 5.3.45

Select device type

Load Config Run

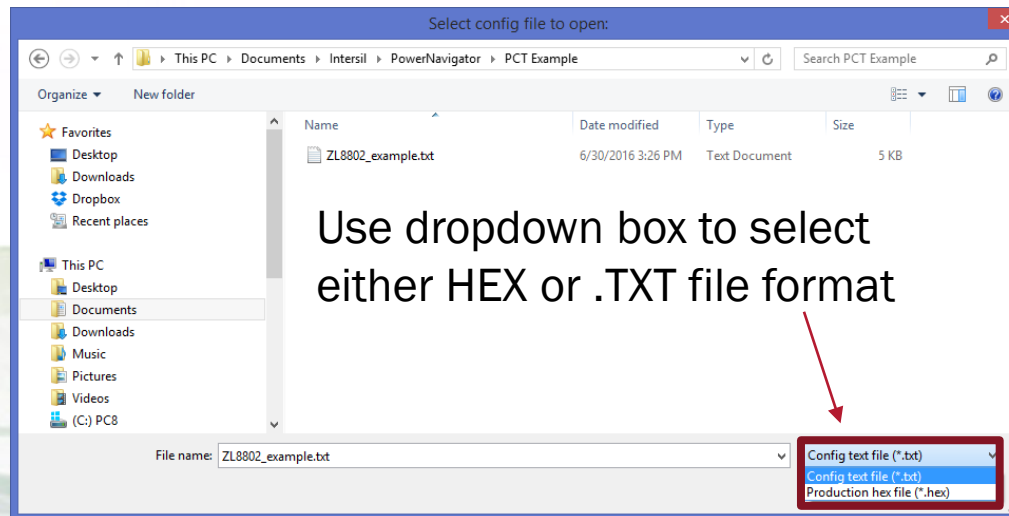
PMBus Address	Device Type	Configuration File	Busy	Pass	Fail
0x28	ZL8802	C:\Users\BHOWELL\Documents\Intersil\PowerNavigator	<input type="radio"/>	<input type="radio"/>	<input type="radio"/>
0x2E	ZL2102	C:\Users\BHOWELL\Documents\Intersil\PowerNavigator	<input type="radio"/>	<input type="radio"/>	<input type="radio"/>
0x25	ISL8272M	C:\Users\BHOWELL\Documents\Intersil\PowerNavigator	<input type="radio"/>	<input type="radio"/>	<input type="radio"/>
0x60	ISL69124	C:\Users\BHOWELL\Documents\Intersil\PowerNavigator	<input type="radio"/>	<input type="radio"/>	<input type="radio"/>

Set Device PMBus address

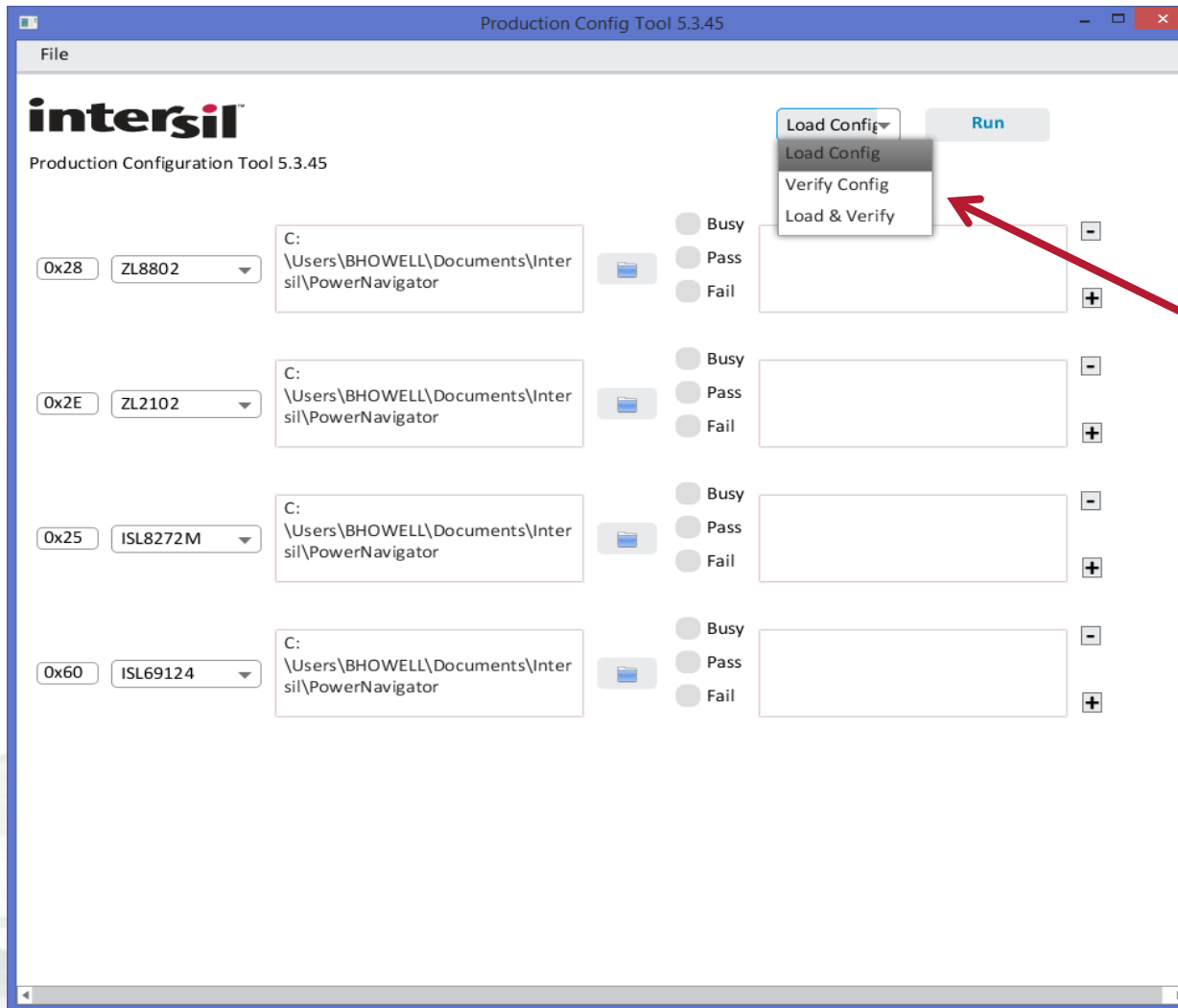
Navigate to configuration file to be loaded

PCT: Hex and .TXT file Support

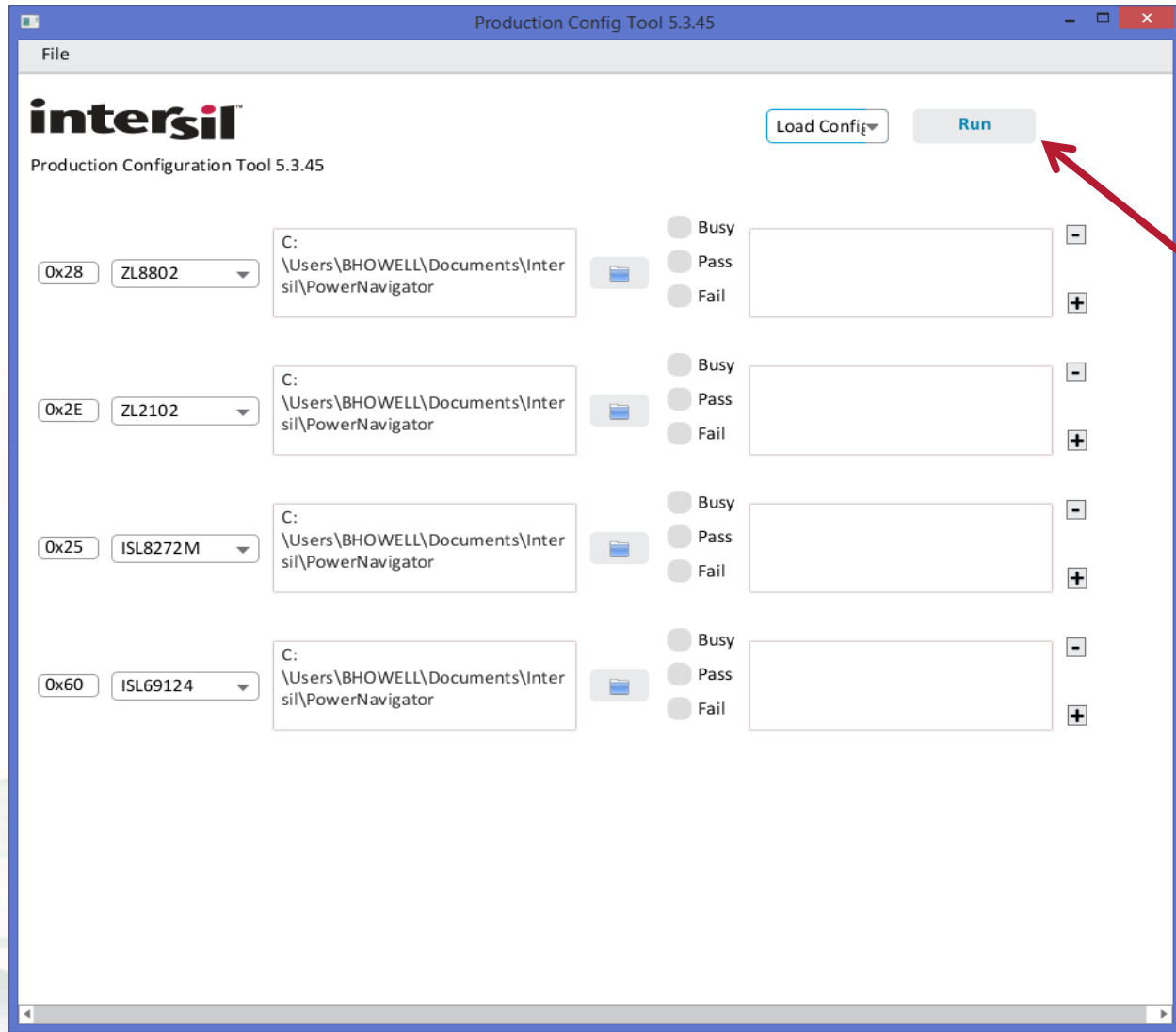
- **PCT supports both HEX and .TXT (Intersil configuration files) file load**
 - Digital Multiphase products only support HEX format
 - Digital Point of Load and Digital Modules support both HEX and TXT
- **When selecting file, use drop down box to select either .txt or .hex files**



Modes: **Load**: config file to device or
Verify: existing device against a config file
Load & Verify: Load and Verify in single step



Press “Run” to start load or verify process.
Status lights show pass/fail results



Configuration File Load

The screenshot shows the 'Production Config Tool 5.3.45' window. It features a menu bar with 'File', a logo, and two buttons: 'Load Config' and 'Run'. Below the logo, the text 'Production Configuration Tool 5.3.45' is displayed. The main area contains four rows, each representing a configuration. Each row has a dropdown menu for a configuration ID, a text box for the file path, a folder icon, and a status indicator (Busy, Pass, or Fail) followed by a message box. The first row shows a successful load for configuration '0x46' with file path 'C:\Users\BHOWELL\Documents\Intersil\PowerNavigator\ZL8802_example.txt'. The other three rows show failed loads for configurations '0x2e', 'ISL8272M', and 'ISL69124' with the message 'Config file does not exist'.

Configuration ID	File Path	Status	Message
0x46	C:\Users\BHOWELL\Documents\Intersil\PowerNavigator\ZL8802_example.txt	Pass	Load Success
0x2e		Fail	Config file does not exist
ISL8272M		Fail	Config file does not exist
ISL69124		Fail	Config file does not exist

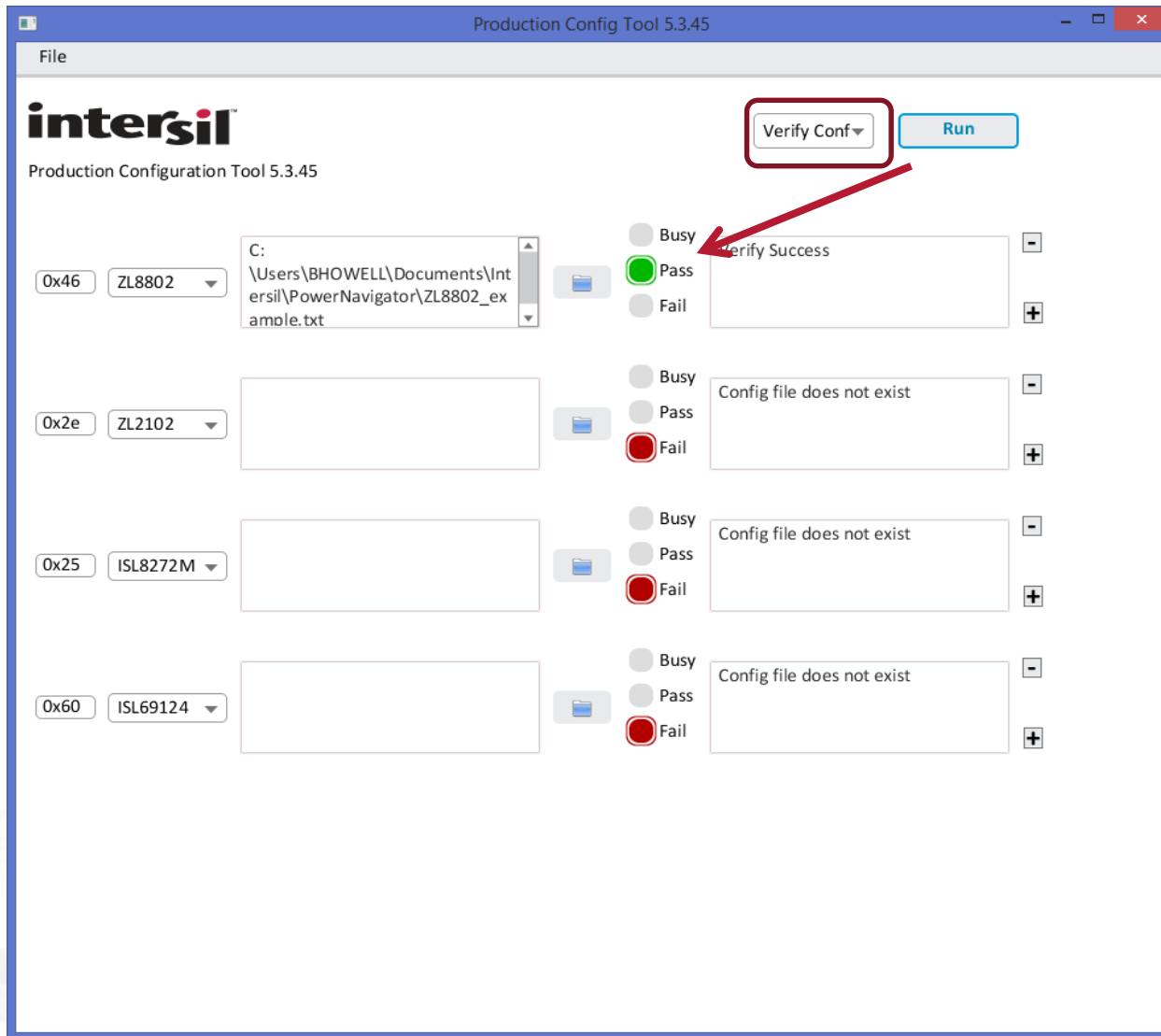
Successful Config Load

Unsuccessful Config Load

Unsuccessful Config Load

Unsuccessful Config Load

Configuration File Verify



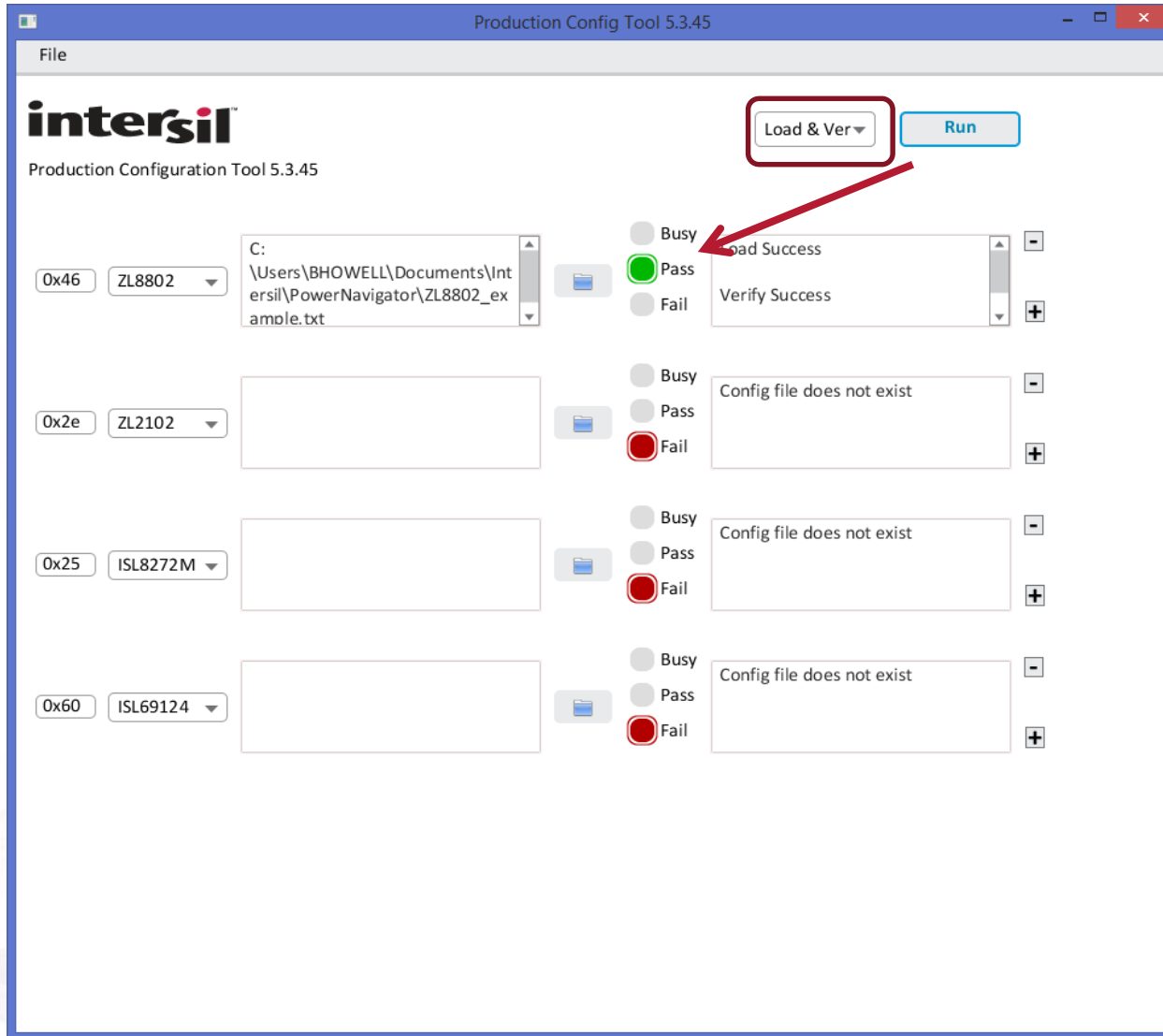
Successful Config Verify

Unsuccessful Config Verify

Unsuccessful Config Verify

Unsuccessful Config Verify

Configuration File Load & Verify



Successful Config Load & Verify

Unsuccessful Config Verify

Unsuccessful Config Verify

Unsuccessful Config Verify

Adding additional Rows

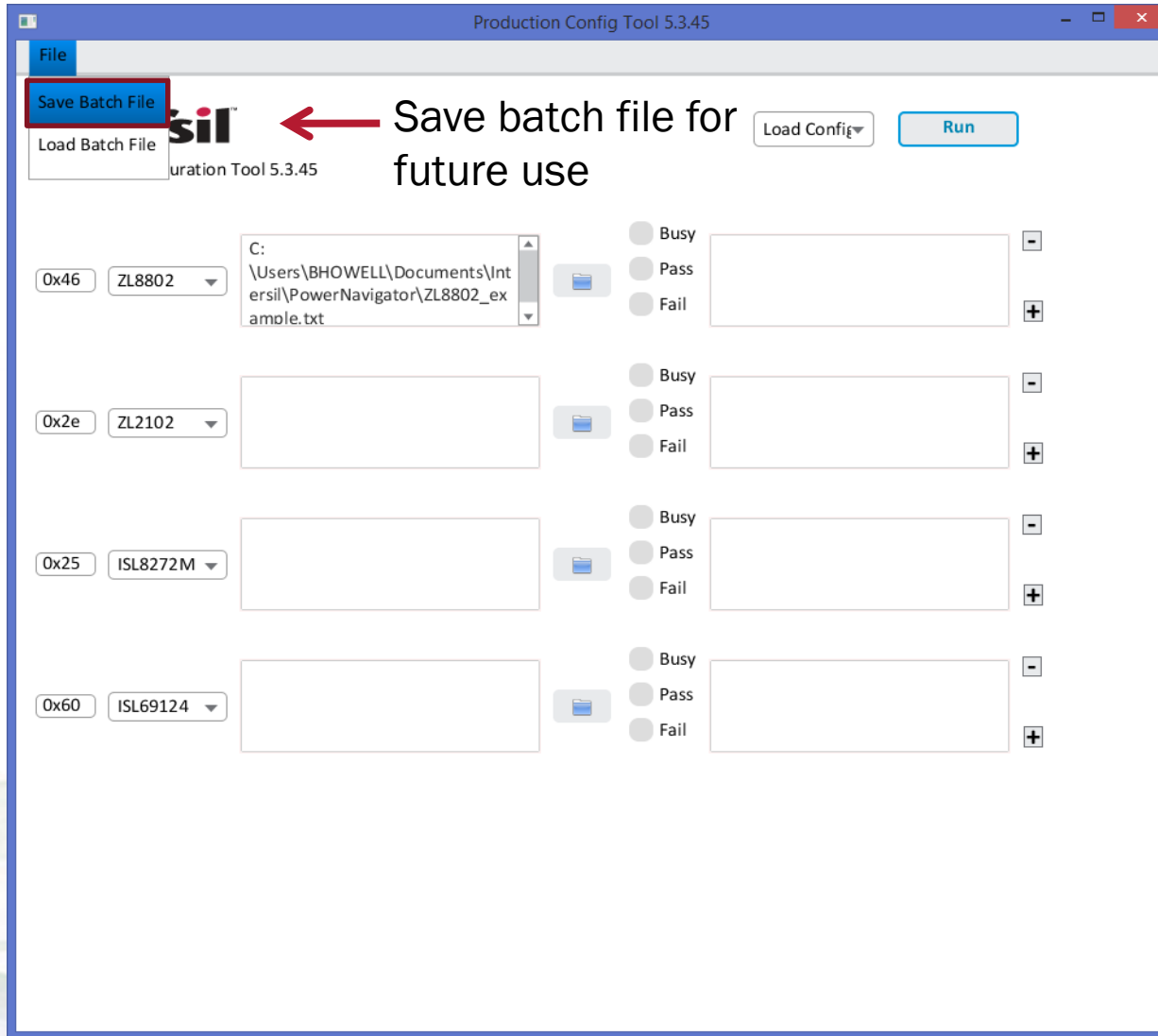
The screenshot shows the 'Production Config Tool 5.3.45' window. The interface includes a menu bar with 'File', the Intersil logo, and buttons for 'Load Config' and 'Run'. Below the logo, the text 'Production Configuration Tool 5.3.45' is displayed. The main area contains a list of four device configurations. Each configuration row consists of a device ID (e.g., 0x46, 0x2e, 0x25, 0x60), a device name (e.g., ZL8802, ZL2102, ISL8272M, ISL69124), a file path (e.g., C:\Users\BHOWELL\Documents\Intersil\PowerNavigator\ZL8802_example.txt), and a set of three radio buttons labeled 'Busy', 'Pass', and 'Fail'. To the right of each row is a plus sign button. A red arrow points to the plus sign button at the bottom right of the list.

Click to add rows to program additional devices

PCT – Batch Files

- **PCT allows users to create “Batch Files”, saving PCT configuration for future use**
 - Save address and device types
 - Automatically points to saved configuration files
 - Individual Batch files can be saved on a per board basis.

Saving Batch files for future use



intersilTM

www.intersil.com