

QE for Display[RX] V2.0.0

Release Note

Thank you very much for your interest in QE for Display[RX] V2.0.0.

This document describes this product installation, restrictions and so on. Please read this document before using the product.

Contents

1.	About QE for Display[RX]	2
1.1	Summary	2
1.2	New Functions.....	2
1.3	Supported Environment.....	3
1.4	Supported Microcontroller	3
1.5	Supported Fit Modules	3
2.	Installation and Uninstallation	4
2.1	Installing This Product	4
2.1.1	Install from the e ² studio Installer	4
2.1.2	Using the QE Installer	4
2.2	Updating This Product.....	4
2.3	Uninstalling This Product.....	5
3.	Notes / Restrictions.....	6
3.1	Usage Considerations	6
3.1.1	About compatibility with the previous version of sample program	6
3.1.2	How to transfer the data of the previous version.....	6
3.1.3	About Functions that do not work in the 32-bit version of the e ² studio	6
3.2	Functional Restrictions	6
3.2.1	The values set in the [Image Quality Adjustment] tab is not reflected after changing the project.	6
	Revision History	7

1. About QE for Display[RX]

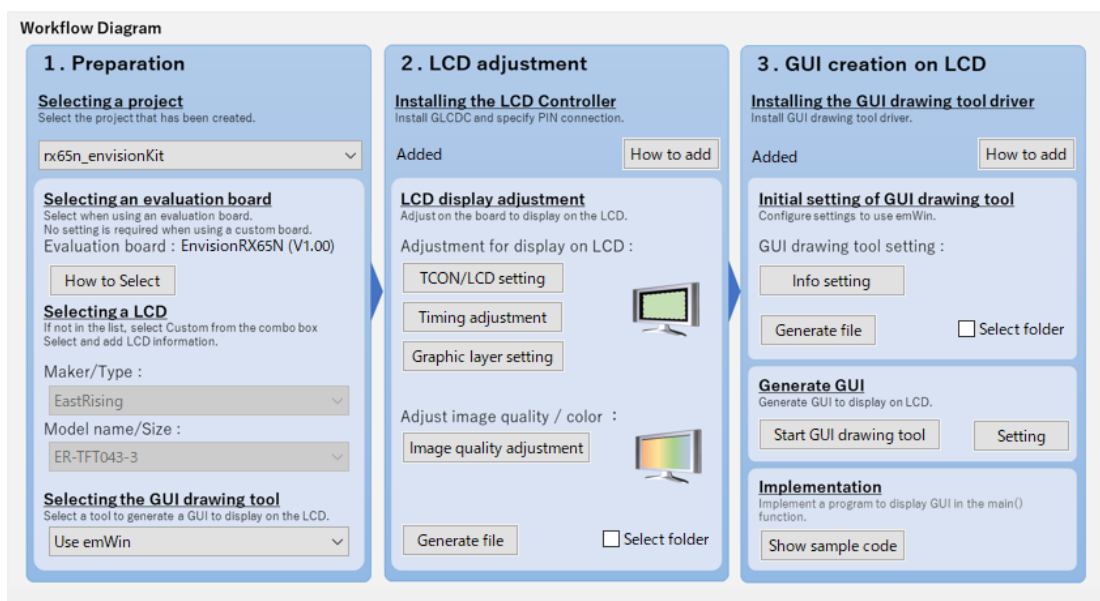
1.1 Summary

QE for Display[RX] is one of several Solution Toolkit which operate under the e² studio integrated development environment. This product allows for easy initial adjustment of display connection (display timing adjustment and image quality adjustment) and create GUI, by using the image display function of the Graphic LCD Controller (a display controller mounted on the RX family of MCUs) and an emWin GUI software package. This shortens the development period.

1.2 New Functions

➤ Enhanced integration with emWin, the GUI software from SEGGER

You can now include an emWin GUI software package using QE for Display[RX]. By making settings according to the workflow view, you can easily make initial adjustments to the LCD display and create and display the GUI.

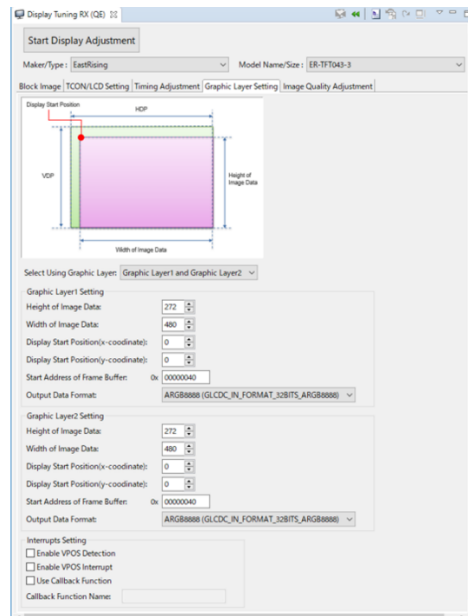
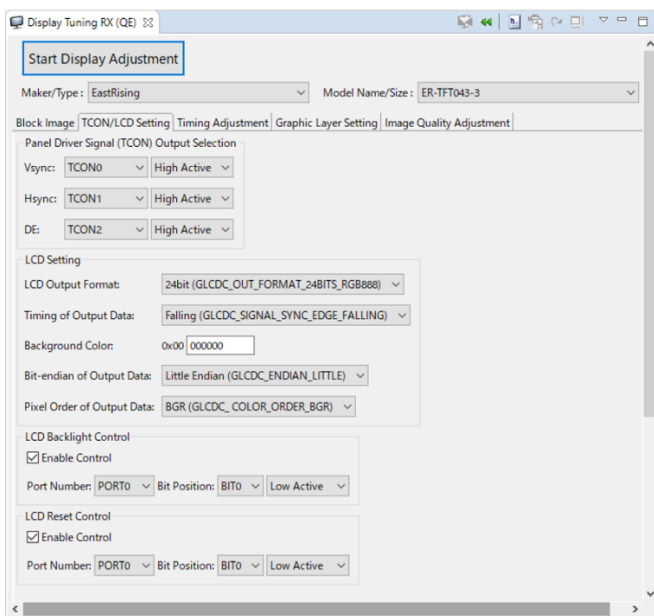


➤ LCD display can be adjusted without the sample program

In the previous version (QE for Display[RX] V1.1.0 or below), QE for Display[RX] and the sample program were used to adjust the LCD display. In V2.0.0, we have the adjustment program in QE, so you can adjust the LCD display in your project without using the sample program.

➤ Added Graphic LCD Controller (GLCDC) setting items that can be configured through the GUI

LCD setting and graphic layer in the Graphic LCD Controller (GLCDC) can now be configured through the GUI.



1.3 Supported Environment

- Windows 8.1, Windows 10
- Renesas e² studio V7.7.0 (or later)
- Renesas e² studio 2020-07 (or later)

1.4 Supported Microcontroller

RX family

- RX600 Series RX65N groups*, RX651 groups*, RX66N groups
(* ROM capacity: 1.5 MB to 2 MB only)
- RX700 Series RX72M groups, RX72N groups

1.5 Supported Fit Modules

- Graphic LCD Controller Module: r_glcdc_rx V1.40 (or later)
- emWin Graphic Library: r_emwin_rx V6.10 (or later)

2. Installation and Uninstallation

QE for Display[RX] is included in RenesasQE_display_package_V200.zip. This zip file is QE for Display package which is an integrated package of RX version and RZ version.

2.1 Installing This Product

Use either of the following procedure to install this product.

2.1.1 Install from the e² studio Installer

1. Start e² studio.
2. Select the [Renesas Views] – [Renesas Software Installer] menu of e² studio to open the [Renesas Software Installer] dialog box.
3. Select the [Renesas QE] and click the [Next>] button
4. Select the [QE for Display[RX](v2.0.0)] check box, and click the [Finish] button.
5. Check that [Renesas QE for Display[RX]] is selected in the [Install] dialog box, and click the [Next>] button.
6. Check that [Renesas QE for Display[RX]] is selected as the target of installation, and click the [Next>] button.
7. After confirming the license agreements, if you agree to the license, select the [I accept the terms of the license agreements] radio button, and click the [Finish] button.
8. If the dialog of the trust certificate is displayed, check that certificate, and click the [OK] button to continue installation.
9. When prompted to restart e² studio, restart it.
10. Start this product from the [Renesas Views] - [Renesas QE] menu of e² studio. For details about how to use this product, see the [Help] menu of e² studio.

2.1.2 Using the QE Installer

1. Start e² studio.
2. From the [Help] menu, select [Install New Software...] to open the [Install] dialog box.
3. Click the [Add...] button to open the [Add Repository] dialog box.
4. Click the [Archive] button, select "RenesasQE_display_package_V200.zip" in the opened dialog box, and click the [Open] button.
5. Click the [OK] button in the [Add Repository] dialog box.
6. Expand the [Renesas QE] item shown in the [Install] dialog box, select the [Renesas QE for Display[RX]] check box, and then click the [Next>] button.
* If you check off the [Contact all update sites during install to find required software] checkbox, you can shorten the installation time.
7. Check that [Renesas QE for Display[RX]] is selected as the target of installation, and click the [Next>] button.
8. After confirming the license agreements, if you agree to the license, select the [I accept the terms of the license agreements] radio button, and click the [Finish] button.
9. If the dialog of the trust certificate is displayed, check that certificate, and click the [OK] button to continue installation.
10. When prompted to restart e² studio, restart it.
11. Start this product from the [Renesas Views] - [Renesas QE] menu of e² studio. For details about how to use this product, see the [Help] menu of e² studio.

2.2 Updating This Product

If you have already installed this product, you can update it in the same way as the procedure for installation.

2.3 Uninstalling This Product

Use the following procedure to uninstall this product.

1. Start e² studio.
2. Select [Help -> About e² studio] to open the [About e² studio] dialog box.
3. Click the [Installation Details] button to open the [e² studio Installation Details] dialog box.
4. Select [Renesas QE for Display[RX]] displayed on the [Installed Software] tabbed page and click the [Uninstall...] button to open the [Uninstall] dialog box.
5. Check the displayed information and click the [Finish] button.
6. When prompted to restart e² studio, restart it.

3. Notes / Restrictions

3.1 Usage Considerations

3.1.1 About compatibility with the previous version of sample program

V2.0.0 is not compatible with the previous version (QE for Display[RX] V1.1.0 or below) of the sample program because V2.0.0 has many new items to set and macros to output to the header file. When updating to V2.0.0, also update the Graphic LCD Controller Module (r_glcdc_rx) to V1.40 or later.

For your information, the relationship between the previous version of QE for Display[RX] and the Graphic LCD Controller Module is as follows.

- QE for Display[RX] V1.0.0 : r_glcdc_rx V1.00 - V1.30
- QE for Display[RX] V1.1.0 : r_glcdc_rx V1.30

3.1.2 How to transfer the data of the previous version

To transfer the configuration data from the previous version, copy the configuration file from the workspace location below to the project-specific location.

- Storage location of the previous version's configuration data

<workspace>/metadata/.plugins/com.renesas.apltool.glcdc

- Storage location of the V2.0.0 configuration data

<project>/settings/.plugin/com.renesas.apltool.glcdc

3.1.3 About Functions that do not work in the 32-bit version of the e² studio

The following functions do not work in the 32-bit version of the e² studio (e² studio V7.8.0 or below).

- Getting board information from Smart Configurator
- Adjusting the LCD display using the adjustment program

For other functions that do not work, refer to the following help in the QE for Display[RX] V2.0.0.

- LCD Main RX (QE) View

3.2 Functional Restrictions

3.2.1 The values set in the [Image Quality Adjustment] tab is not reflected after changing the project.

When you change the project in the [LCD Main RX (QE)] view, each setting in the [Image Quality Adjustment] tab will remain at its default value. Therefore, the value set in the [Image Quality Adjustment] tab is not reflected in the register or header file, and the [Restore to the Default] button does not work.

Workaround:

If you have changed a project in the [LCD Main RX (QE)] view before making any settings in the [Image Quality Adjustment] tab, close the [Display Tuning RX (QE)] view and reopen it with the target project selected in the [LCD Main RX (QE)] view.

Revision History

Rev.	Date	Description	
		Page	Summary
1.00	Aug.5.20	-	First edition issued.

General Precautions in the Handling of Microprocessing Unit and Microcontroller Unit Products

The following usage notes are applicable to all Microprocessing unit and Microcontroller unit products from Renesas. For detailed usage notes on the products covered by this document, refer to the relevant sections of the document as well as any technical updates that have been issued for the products.

1. Precaution against Electrostatic Discharge (ESD)

A strong electrical field, when exposed to a CMOS device, can cause destruction of the gate oxide and ultimately degrade the device operation. Steps must be taken to stop the generation of static electricity as much as possible, and quickly dissipate it when it occurs. Environmental control must be adequate. When it is dry, a humidifier should be used. This is recommended to avoid using insulators that can easily build up static electricity.

Semiconductor devices must be stored and transported in an anti-static container, static shielding bag or conductive material. All test and measurement tools including work benches and floors must be grounded. The operator must also be grounded using a wrist strap. Semiconductor devices must not be touched with bare hands. Similar precautions must be taken for printed circuit boards with mounted semiconductor devices.

2. Processing at power-on

The state of the product is undefined at the time when power is supplied. The states of internal circuits in the LSI are indeterminate and the states of register settings and pins are undefined at the time when power is supplied. In a finished product where the reset signal is applied to the external reset pin, the states of pins are not guaranteed from the time when power is supplied until the reset process is completed. In a similar way, the states of pins in a product that is reset by an on-chip power-on reset function are not guaranteed from the time when power is supplied until the power reaches the level at which resetting is specified.

3. Input of signal during power-off state

Do not input signals or an I/O pull-up power supply while the device is powered off. The current injection that results from input of such a signal or I/O pull-up power supply may cause malfunction and the abnormal current that passes in the device at this time may cause degradation of internal elements. Follow the guideline for input signal during power-off state as described in your product documentation.

4. Handling of unused pins

Handle unused pins in accordance with the directions given under handling of unused pins in the manual. The input pins of CMOS products are generally in the high-impedance state. In operation with an unused pin in the open-circuit state, extra electromagnetic noise is induced in the vicinity of the LSI, an associated shoot-through current flows internally, and malfunctions occur due to the false recognition of the pin state as an input signal become possible.

5. Clock signals

After applying a reset, only release the reset line after the operating clock signal becomes stable. When switching the clock signal during program execution, wait until the target clock signal is stabilized. When the clock signal is generated with an external resonator or from an external oscillator during a reset, ensure that the reset line is only released after full stabilization of the clock signal. Additionally, when switching to a clock signal produced with an external resonator or by an external oscillator while program execution is in progress, wait until the target clock signal is stable.

6. Voltage application waveform at input pin

Waveform distortion due to input noise or a reflected wave may cause malfunction. If the input of the CMOS device stays in the area between V_{IL} (Max.) and V_{IH} (Min.) due to noise, for example, the device may malfunction. Take care to prevent chattering noise from entering the device when the input level is fixed, and also in the transition period when the input level passes through the area between V_{IL} (Max.) and V_{IH} (Min.).

7. Prohibition of access to reserved addresses

Access to reserved addresses is prohibited. The reserved addresses are provided for possible future expansion of functions. Do not access these addresses as the correct operation of the LSI is not guaranteed.

8. Differences between products

Before changing from one product to another, for example to a product with a different part number, confirm that the change will not lead to problems. The characteristics of a microprocessing unit or microcontroller unit products in the same group but having a different part number might differ in terms of internal memory capacity, layout pattern, and other factors, which can affect the ranges of electrical characteristics, such as characteristic values, operating margins, immunity to noise, and amount of radiated noise. When changing to a product with a different part number, implement a system-evaluation test for the given product.

Notice

1. Descriptions of circuits, software and other related information in this document are provided only to illustrate the operation of semiconductor products and application examples. You are fully responsible for the incorporation or any other use of the circuits, software, and information in the design of your product or system. Renesas Electronics disclaims any and all liability for any losses and damages incurred by you or third parties arising from the use of these circuits, software, or information.
 2. Renesas Electronics hereby expressly disclaims any warranties against and liability for infringement or any other claims involving patents, copyrights, or other intellectual property rights of third parties, by or arising from the use of Renesas Electronics products or technical information described in this document, including but not limited to, the product data, drawings, charts, programs, algorithms, and application examples.
 3. No license, express, implied or otherwise, is granted hereby under any patents, copyrights or other intellectual property rights of Renesas Electronics or others.
 4. You shall not alter, modify, copy, or reverse engineer any Renesas Electronics product, whether in whole or in part. Renesas Electronics disclaims any and all liability for any losses or damages incurred by you or third parties arising from such alteration, modification, copying or reverse engineering.
 5. Renesas Electronics products are classified according to the following two quality grades: "Standard" and "High Quality". The intended applications for each Renesas Electronics product depends on the product's quality grade, as indicated below.
 - "Standard": Computers; office equipment; communications equipment; test and measurement equipment; audio and visual equipment; home electronic appliances; machine tools; personal electronic equipment; industrial robots; etc.
 - "High Quality": Transportation equipment (automobiles, trains, ships, etc.); traffic control (traffic lights); large-scale communication equipment; key financial terminal systems; safety control equipment; etc.
- Unless expressly designated as a high reliability product or a product for harsh environments in a Renesas Electronics data sheet or other Renesas Electronics document, Renesas Electronics products are not intended or authorized for use in products or systems that may pose a direct threat to human life or bodily injury (artificial life support devices or systems; surgical implantations; etc.), or may cause serious property damage (space system; undersea repeaters; nuclear power control systems; aircraft control systems; key plant systems; military equipment; etc.). Renesas Electronics disclaims any and all liability for any damages or losses incurred by you or any third parties arising from the use of any Renesas Electronics product that is inconsistent with any Renesas Electronics data sheet, user's manual or other Renesas Electronics document.
6. When using Renesas Electronics products, refer to the latest product information (data sheets, user's manuals, application notes, "General Notes for Handling and Using Semiconductor Devices" in the reliability handbook, etc.), and ensure that usage conditions are within the ranges specified by Renesas Electronics with respect to maximum ratings, operating power supply voltage range, heat dissipation characteristics, installation, etc. Renesas Electronics disclaims any and all liability for any malfunctions, failure or accident arising out of the use of Renesas Electronics products outside of such specified ranges.
 7. Although Renesas Electronics endeavors to improve the quality and reliability of Renesas Electronics products, semiconductor products have specific characteristics, such as the occurrence of failure at a certain rate and malfunctions under certain use conditions. Unless designated as a high reliability product or a product for harsh environments in a Renesas Electronics data sheet or other Renesas Electronics document, Renesas Electronics products are not subject to radiation resistance design. You are responsible for implementing safety measures to guard against the possibility of bodily injury, injury or damage caused by fire, and/or danger to the public in the event of a failure or malfunction of Renesas Electronics products, such as safety design for hardware and software, including but not limited to redundancy, fire control and malfunction prevention, appropriate treatment for aging degradation or any other appropriate measures. Because the evaluation of microcomputer software alone is very difficult and impractical, you are responsible for evaluating the safety of the final products or systems manufactured by you.
 8. Please contact a Renesas Electronics sales office for details as to environmental matters such as the environmental compatibility of each Renesas Electronics product. You are responsible for carefully and sufficiently investigating applicable laws and regulations that regulate the inclusion or use of controlled substances, including without limitation, the EU RoHS Directive, and using Renesas Electronics products in compliance with all these applicable laws and regulations. Renesas Electronics disclaims any and all liability for damages or losses occurring as a result of your noncompliance with applicable laws and regulations.
 9. Renesas Electronics products and technologies shall not be used for or incorporated into any products or systems whose manufacture, use, or sale is prohibited under any applicable domestic or foreign laws or regulations. You shall comply with any applicable export control laws and regulations promulgated and administered by the governments of any countries asserting jurisdiction over the parties or transactions.
 10. It is the responsibility of the buyer or distributor of Renesas Electronics products, or any other party who distributes, disposes of, or otherwise sells or transfers the product to a third party, to notify such third party in advance of the contents and conditions set forth in this document.
 11. This document shall not be reprinted, reproduced or duplicated in any form, in whole or in part, without prior written consent of Renesas Electronics.
 12. Please contact a Renesas Electronics sales office if you have any questions regarding the information contained in this document or Renesas Electronics products.

(Note1) "Renesas Electronics" as used in this document means Renesas Electronics Corporation and also includes its directly or indirectly controlled subsidiaries.

(Note2) "Renesas Electronics product(s)" means any product developed or manufactured by or for Renesas Electronics.

(Rev.4.0-1 November 2017)

Corporate Headquarters

TOYOSU FORESIA, 3-2-24 Toyosu,
Koto-ku, Tokyo 135-0061, Japan
www.renesas.com

Trademarks

Renesas and the Renesas logo are trademarks of Renesas Electronics Corporation. All trademarks and registered trademarks are the property of their respective owners.

Contact information

For further information on a product, technology, the most up-to-date version of a document, or your nearest sales office, please visit:
www.renesas.com/contact/