

RZ Ecosystem Partner Solution NSW CrackVision Light



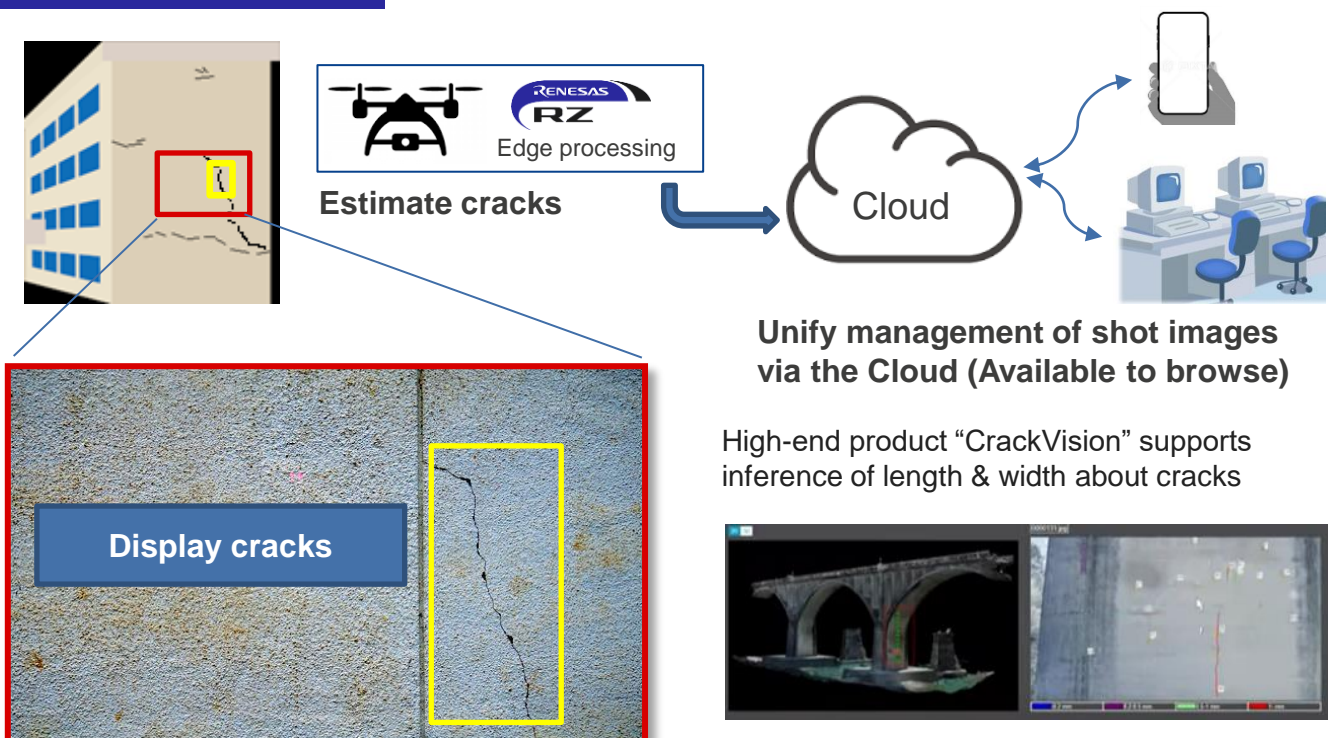
Solution Summary

CrackVision Light is the solution for estimating cracks in concrete of a structural object. Low power efficiency and real-time processing are made possible by DRP-AI of [RZ/V series](#).

Features/Benefits

- Use image data to estimate cracks in concrete, mortar, etc.
- Work on site is only shooting image, which greatly contributes to the reduction of work man-hours and the AI feature improves the accuracy of finding cracks
- DRP-AI reduces power consumption and enables development of compact design to be easily installed into edge devices

Block Diagrams/Graphics




Target Markets and Applications

- Inspection and maintenance for infrastructure equipment, large-scale facility made by concrete

Corporate Profile

Name	NSW Inc.
Business Philosophy	Humanware By Systemware
Established	August 3, 1966
Representative	President & Representative Director Shoji Tada
Head Office	31-11, Sakuragaoka-cho, Shibuya-ku, Tokyo 150-8577, Japan
Capital	5.5 billion yen
Stock Exchange Listing	The 1st Section of the Tokyo Stock Exchange (Securities code number: 9739)
Description of Business	Enterprise Solutions , Services Solutions , Embedded Solutions , Device Solutions
Employees (As of March 31, 2022)	(Consolidated) 2,337 (Non-consolidated) 1,840
Affiliates	<ul style="list-style-type: none"> • NSW Techno Services Co., Ltd. • NSW China Co., Ltd. • NSW WITH CO., LTD.

Offices



●Osaka Office
 Crystal Tower 17F 1-2-27,Shiromi,
 Chuo-ku,Osaka City, Osaka 540-6017

●Takamatsu IT Center
 (Data Center)

●Hiroshima Office
 13-11, Nobori-cho, Naka-ku, Hiroshima City,
 Hiroshima Prefecture 730-0016

●Fukuoka Office
 2-17-5, Hakataekihigashi, Hakata-ku,
 Fukuoka City, Fukuoka Prefecture
 812-0013

●Kitakyushu Office
 #201 Kitakyushu Telework Center,
 6F AIM Bldg, 3-8-1, Asano,
 Kokurakita-ku, Kitakyushu City,
 Fukuoka Prefecture, 802-0001

●NSW China
 Rm. 9, 3F, Tower B, Tian Yuan Gang Center, Dongsanhuan
 North Road, Chaoyang District, Beijing

●Taiwan Office
 11F., No.209, Sec. 1, Civic Blvd., Datong Dist., Taipei City 10351, Taiwan

●Head Office
 31-11, Sakuragaoka-cho, Shibuya-ku,
 Tokyo 150-8577

●Shibuya IT Center
 1-1, Nanpeidai-cho, Shibuya-ku,
 Tokyo 150-0036

●Nanpeidai Development Center
 2-15, Nanpeidai-cho, Shibuya-ku,
 Tokyo 150-0036

●Sakuragaoka Development Center
 Shibuya Infoss Annex 5F., 12-10,
 Sakuragaoka-cho, Shibuya-ku,
 Tokyo 150-0031

●Yamanashi IT Center

●Nagoya Office
 2-14-19, Meiekiminami, Nakamura-ku,
 Nagoya City, Aichi Prefecture 450-0003

●Data Center:Shibuya,Yamanashi,Takamatsu