

Renesas RA Family

EK-RA6M1

1. Introduction

This document describes the known issues and exceptions to the functional specifications for the EK-RA6M1 Evaluation Kit. For additional information on the kit, see the EK-RA6M1 user’s manual.

2. Issues by Version

2.1 Version 1

2.1.1 LED2 (Power and debug status) installed incorrectly

Versions affected: version 1 (v1), serial numbers 001 through 550

LED2 may be installed with reverse polarity. When installed incorrectly, LED2 will not turn on.

The kit is otherwise fully functional, but the kit may appear to not be on.

LED2 provides indicators for “Power Good” (green) and “Debug Port Status” (red) in one package.

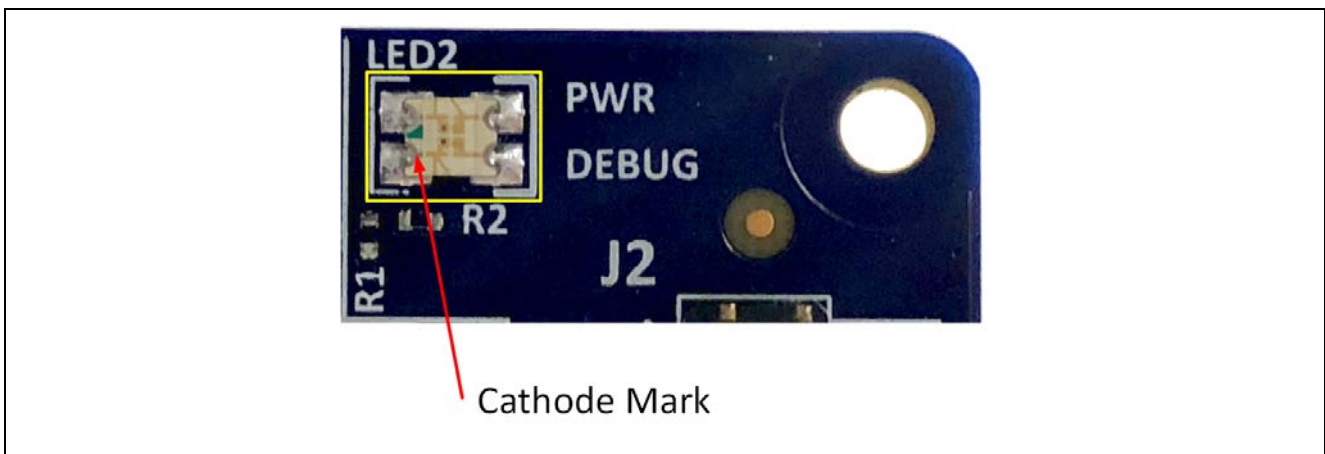


Figure 1. LED2 Incorrect Installation

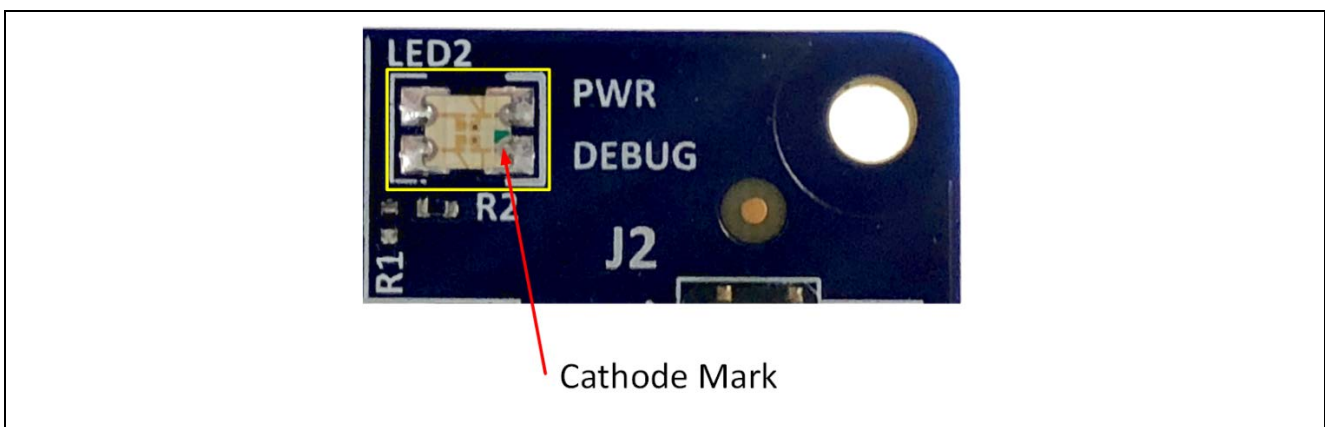


Figure 2. LED2 Correct Installation

Corrective Action

LED2 may be removed and reinstalled in the correct orientation. When reinstalling LED2, ensure that the green cathode mark on the top of LED2 points to the right, toward the “PWR” and “DEBUG” labels next to LED2. Refer to Figure 1 and Figure 2.

Serial Number Identification

The serial number can be found in two locations.

The kit serial number is printed on the outside of the kit packaging. Locate the barcode label on the end of the box. The serial number is identified with the text “S. LOT xxxxxxxxx” found at the bottom of the label as shown in Figure 3.

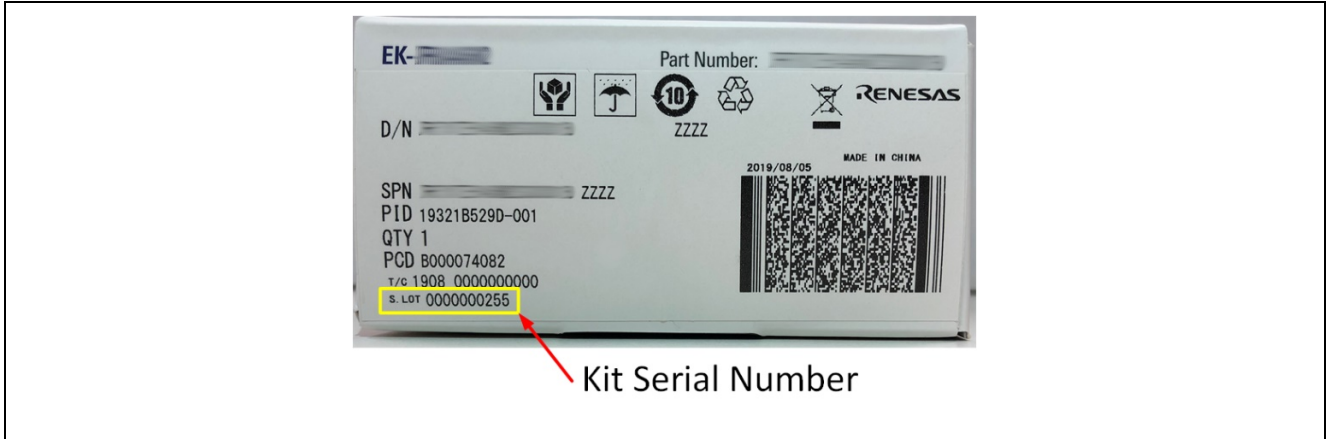


Figure 3. Serial Number on the Kit Box (typical label)

The serial number is also printed on the circuit board. Locate the manufacturing label on the bottom side of the board, near the main MCU. The serial number is the six-digit number in the third row of numbers as shown in Figure 4.

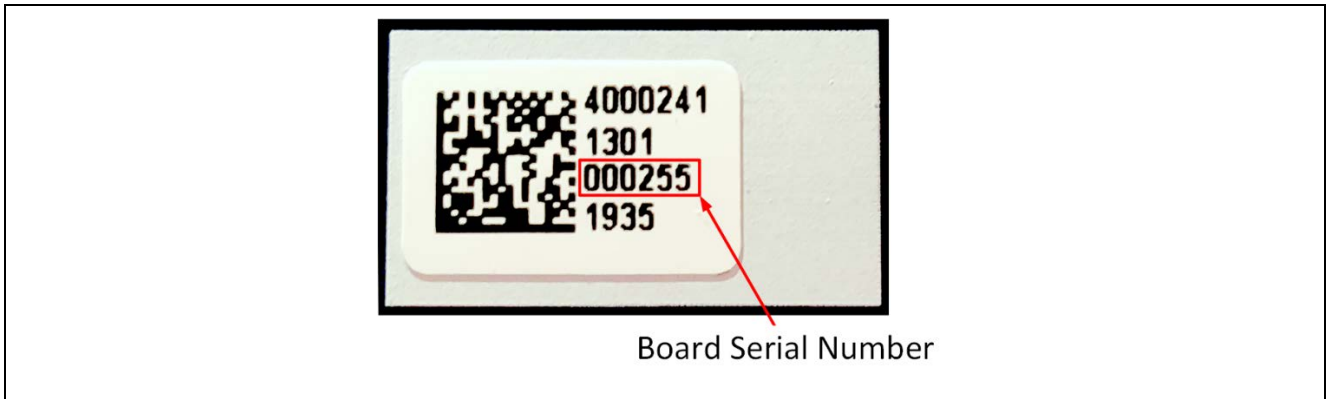


Figure 4. Serial Number on the Circuit Board

Version Number Identification

Figure 5 shows the location of the “Renesas RA” logo and version number on the bottom side of the kit circuit board, where the first line below the logo is the kit name, and the second line below the logo is the version information, with the numeric portion in the second line indicating the board version number.

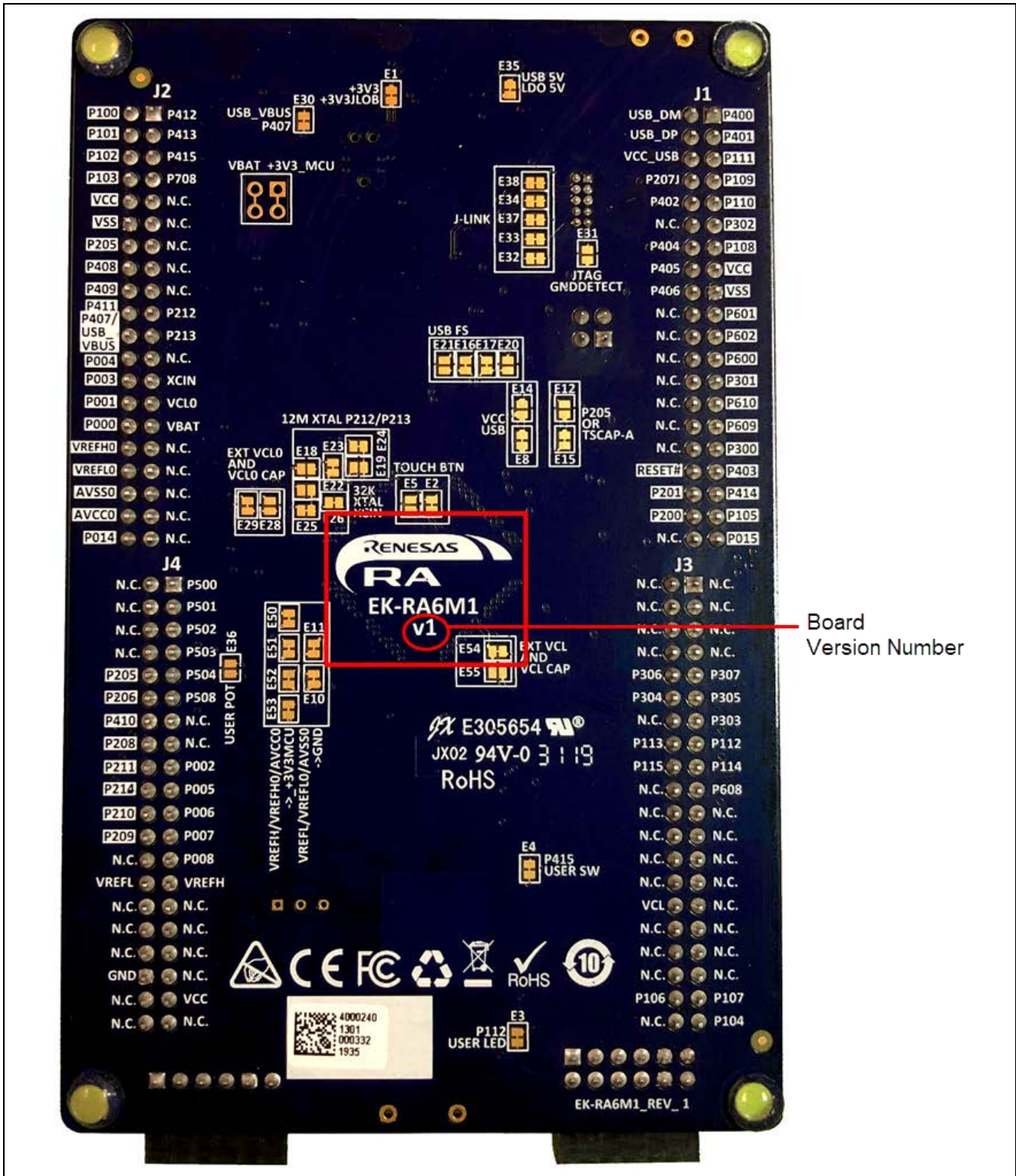


Figure 5. Version Number Location

For more information, please contact Renesas Support.

Revision History

Rev.	Date	Description	
		Page	Summary
1.00	Oct.02.19	-	First release
1.01	Oct.30.19	-	Second release