

[Upgrade to Revision]

R20TS1109EJ0100

Rev.1.00

Feb. 05, 2025

Solution Toolkit QE for Display[RX,RA] V3.5.0:  
Development Assistance Tool for Display Applications

Outline

QE for Display[RX,RA], a development assistance tool for display, has been updated from V3.4.0 to V3.5.0.

1. Products to Be Updated

QE for Display[RX,RA] V3.4.0

2. Description

The following sections cover the main enhancements. For details of the update and how to install the product, refer to the release note at the link below.

- QE for Display[RX,RA] V3.5.0, QE for Camera[RA] V1.0.0 Release Note

<https://www.renesas.com/document/rln/qe-displayrxra-v350-qe-camerara-v100-release-note>

QE for Display[RX,RA] V3.5.0 and QE for Camera[RA] V1.0.0 are the same Release Note.

2.1 New Features

- Added camera function

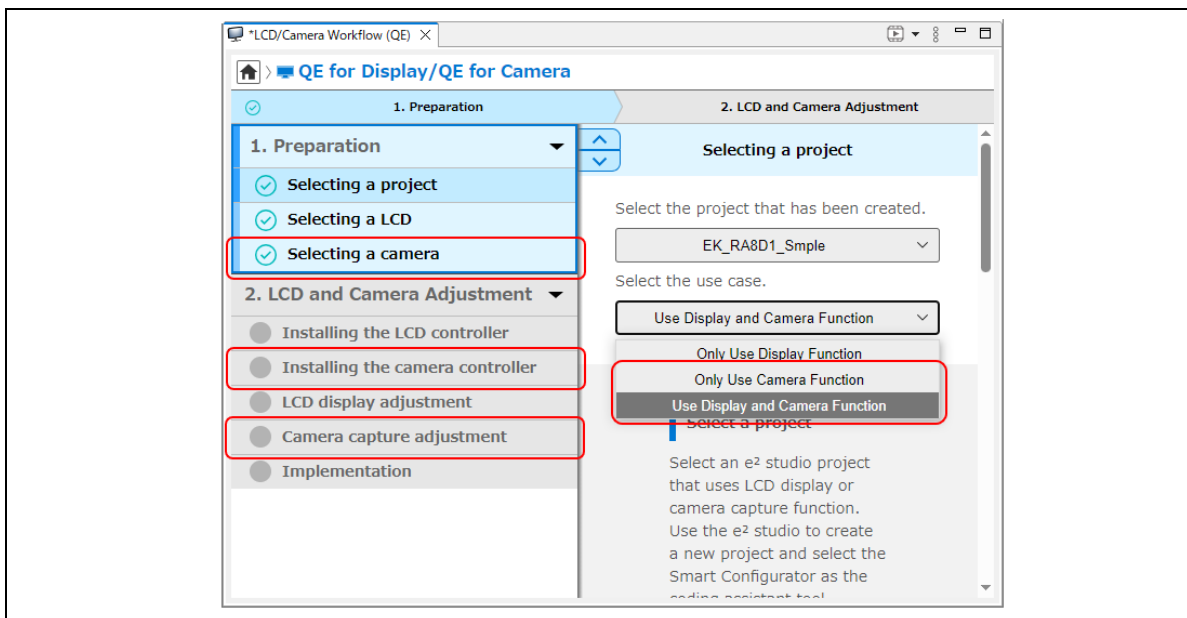


Figure 1 Workflow window: Camera Function

External images can be captured with the Capture Engine Unit (CEU) module in the RA8D1 Group of the RA Family and stored in memory or displayed on LCD screen. In addition, when using MIPI-DSI, the real-time adjustment of [TCON/LCD Setting], [Timing Adjustment(LCD)] and [Graphic Layer Setting] is supported.

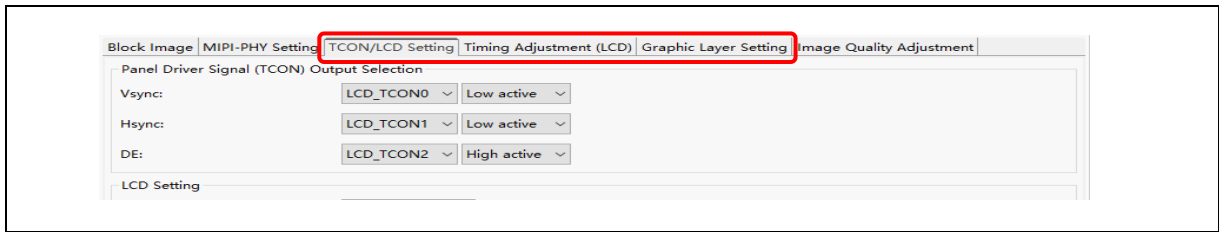


Figure 2 Display/Camera Tuning view : Real-time display adjustment when using MIPI-DSI

- Support MIPI-PHY and MIPI-DSI tuning  
This can be easily adjusted using the "MIPI-PHY Setting" and "Timing Adjustment (LCD)".

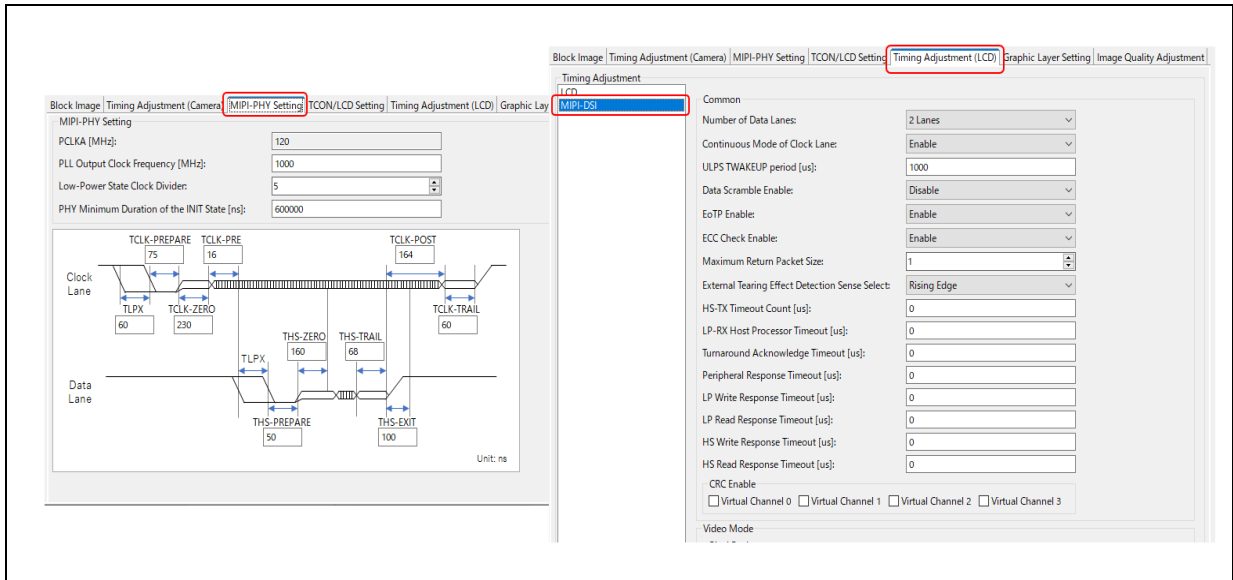


Figure 3 Display/Camera Tuning view : "MIPI-PHY Setting" and "Timing Adjustment (LCD)"

- Support Tuning the Capture Engine Unit (CEU)  
It can be easily adjusted using the "Timing Adjustment (Camera)".

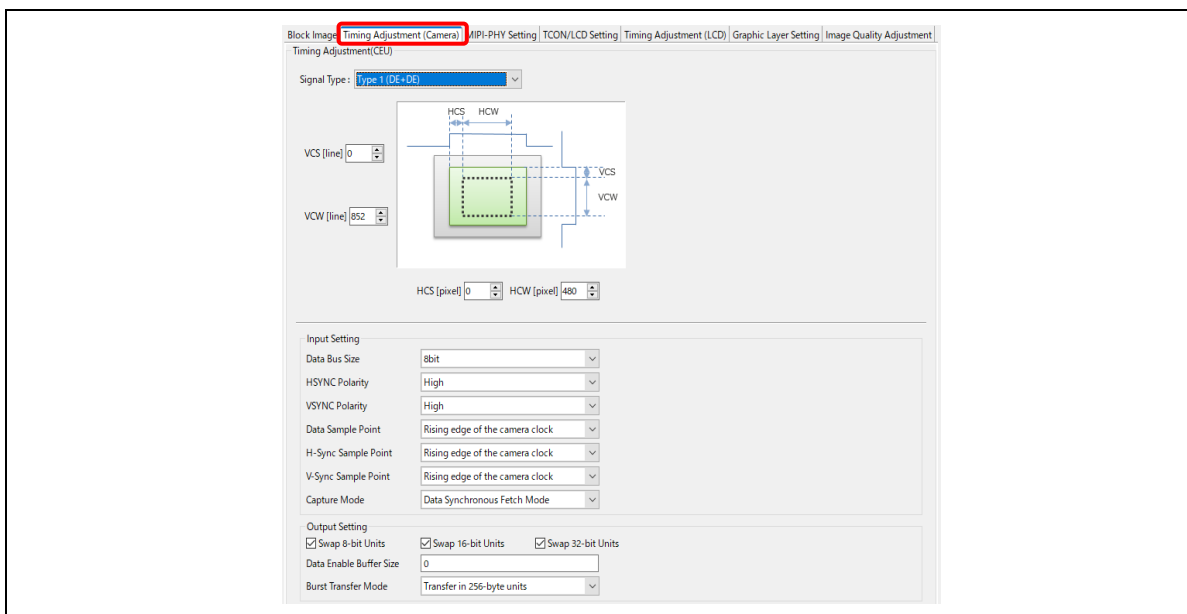


Figure 4 Display/Camera Tuning view : "Timing Adjustment (Camera)"

### 3. Obtaining the Product

Download the installer for QE for Display V3.5.0 from the following URL:

<https://www.renesas.com/qe-display/#tab-release-information>

QE for Display[RX,RA] V3.5.0 and QE for Camera[RA] V1.0.0 are the same plug-in. Therefore, you can use both tools by installing either one of the two. The software would be installed in e<sup>2</sup> studio as "Renesas QE for Display[RX,RA]/QE for Camera[RA]".

**Revision History**

Rev.	Date	Description	
		Page	Summary
1.00	Feb.05.25	-	First edition issued

Renesas Electronics has used reasonable care in preparing the information included in this document, but Renesas Electronics does not warrant that such information is error free. Renesas Electronics assumes no liability whatsoever for any damages incurred by you resulting from errors in or omissions from the information included herein.

The past news contents have been based on information at the time of publication. Now changed or invalid information may be included.

The URLs in the Tool News also may be subject to change or become invalid without prior notice.

**Corporate Headquarters**

TOYOSU FORESIA, 3-2-24 Toyosu,  
Koto-ku, Tokyo 135-0061, Japan  
[www.renesas.com](http://www.renesas.com)

**Trademarks**

Renesas and the Renesas logo are trademarks of Renesas Electronics Corporation. All trademarks and registered trademarks are the property of their respective owners.

**Contact Information**

For further information on a product, technology, the most up-to-date version of a document, or your nearest sales office, please visit:  
[www.renesas.com/contact/](http://www.renesas.com/contact/)