

[Upgrade to Revision]

R20TS1093EJ0100

Rev.1.00

Jan. 20, 2025

e² studio RX Smart Configurator Plug-in 2025-01,
Smart Configurator for RX V2.24.0

Outline

The products in the title have been updated as follows.

- (1) e² studio RX Smart Configurator Plug-in: From 2024-10 to 2025-01
- (2) Smart Configurator for RX: From V2.23.0 to V2.24.0

1. Products to Be Updated

- e² studio 2024-10 (RX Smart Configurator Plug-in 2024-10) and earlier
- Smart Configurator for RX V2.23.0 and earlier

2. Description

2.1 New features

- Using Visual Studio Code with VS Code Debug Extension for Renesas GDB v25.2.1 or later, projects generated with the Smart Configurator can be easily built on VS Code using Ninja.

```

[main] Configuring project: demo
[proc] Executing command: "C:\Program Files\CMake\bin\cmake.EXE" -DCMAKE_BUILD_TYPE:String=Debug
-DCMAKE_TOOLCHAIN_FILE:String=c:/demo/cmake/cross.cmake -DCMAKE_EXPORT_COMPILE_COMMANDS:BOOL=TRUE --no-warn-unused-cli
-SC:/demo -Bc:/demo/build -G Ninja
[cmake] Not searching for unused variables given on the command line.
[cmake] -- Configuring done (0.2s)
[cmake] -- Generating done (0.1s)
[cmake] -- Build files have been written to: C:/demo/build
    
```

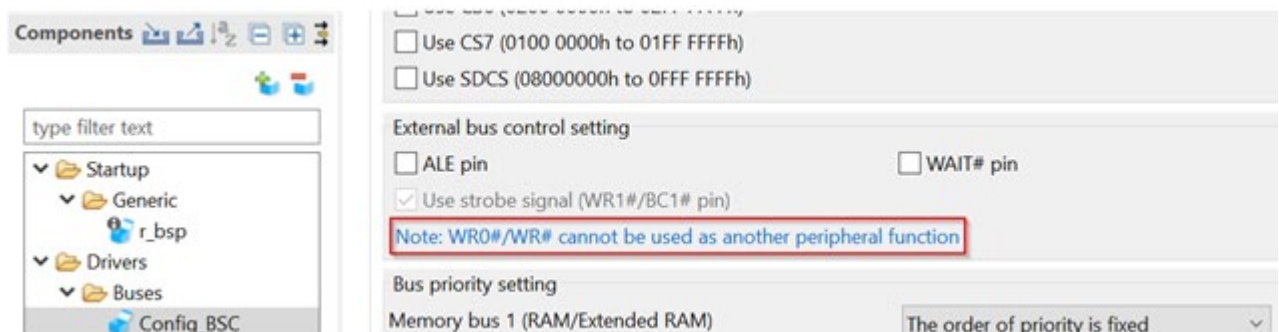
Please also refer to the following contents.

[Renesas VS Code Extensions User Guide](#)

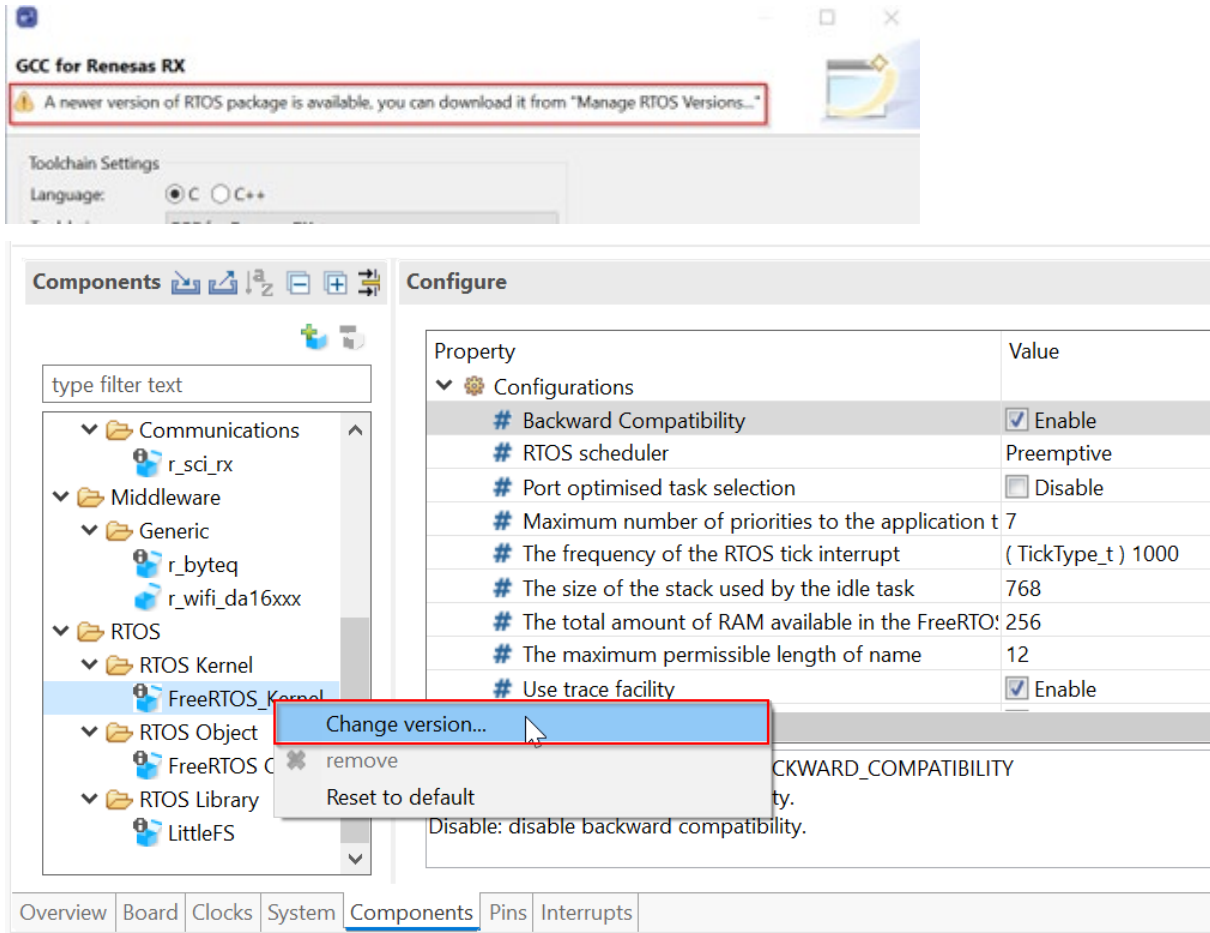
[Visual Studio Code - How to Install Renesas Extensions](#)

[Visual Studio Code - How to Create, Build, and Debug a Smart Configurator Project for RX](#)

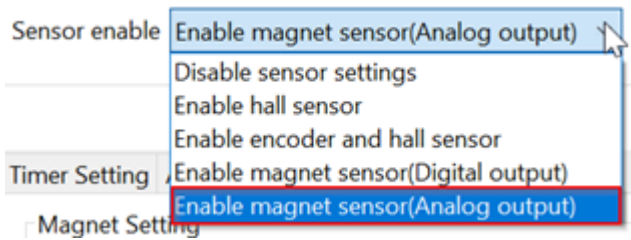
- When using the bus component, there is a warning message for WR# pin. Applicable devices: all RX600, RX700 devices, and RX230, RX231



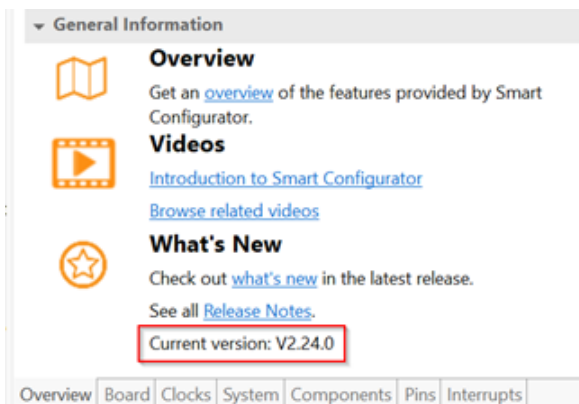
- From this version, the FreeRTOS package update information is displayed. In addition, the FreeRTOS version can be selected.



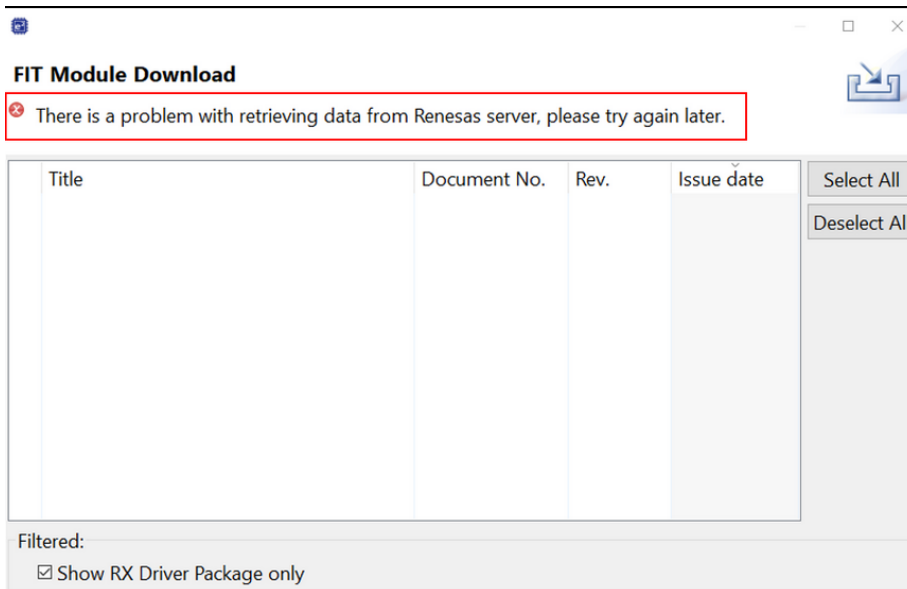
- Added magnet sensor (analog output) setting to the RX24T motor component.



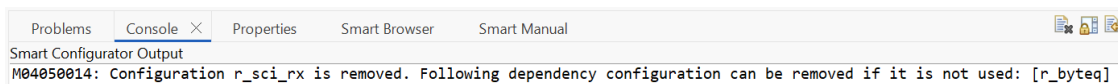
- Smart Configurator versions are displayed in the "Overview" tab.



- If there is a problem downloading from the Renesas server, a warning message appears in the dialog



- A message is displayed in the console view when a dependent component is deleted.



- The Motor component extends magnet sensor with digital output support for other devices.

Applicable devices: RX13T, RX23T, RX24T, RX24U, RX66T, RX72M, RX72T

2.2 Issues Fixed

The following issues have been fixed.

- Fixed a problem with the key code setting of the General PWM Timer.
- Fixed problems with RSCI smart card interface mode.
- Fixed a problem that caused the RCR4.RCKSEL bit to be set twice when the real-time clock (RTC) component was combined with the BSP.
- Fixed a problem of displaying the RIIC interrupt priority in error on RX microcontrollers that do not have group interrupts.

Please refer to the following release notes for details on new features and modifications.

- Smart Configurator for RX V2.24.0 Release Note (the note will be uploaded on January 20)
<https://www.renesas.com/software-tool/rx-smart-configurator#documents>

3. Updating the Product

3.1 Using e² studio

By updating e² studio, you can also update the Smart Configurator.

For details on how to update e² studio, please refer to “3. How to Update” in the following Tool News. (the news will be uploaded on January 20)

<https://www.renesas.com/software-tool/e-studio#documents>

RENESAS TOOL NEWS: R20TS1089EJ0100 (January 20, 2025, issue)

[Upgrade to Version] e² studio Integrated Development Environment 2025-01

Note: The Smart Configurator is updated automatically when e² studio is updated.

3.2 Using CS+

- (1) Download the latest Smart Configurator for RX from the URL below and install it (V2.24.0 will be released on January 20).

<https://www.renesas.com/rx-smart-configurator#downloads>

Smart Configurator for RX V2.24.0

- (2) On the Windows Start menu, select Programs, Renesas Electronics CS+, and then run the Update Manager (this service will be available from January 20).

Note: If you have started CS+ with the Rapid Startup function enabled, exit CS+, and then start the Update Manager.

If the Rapid Startup function is enabled and the CS+ icon is shown in the Windows notification area, the following error occurs.

M0120001

"CubeSuiteW+.exe"

Installation is suspended because "CubeSuiteW+.exe" is running.

It will be resumed next time you start the tool.

Revision History

Rev.	Date	Description	
		Page	Summary
1.00	Jan. 20.25	-	First edition issued

Renesas Electronics has used reasonable care in preparing the information included in this document, but Renesas Electronics does not warrant that such information is error free. Renesas Electronics assumes no liability whatsoever for any damages incurred by you resulting from errors in or omissions from the information included herein.

The past news contents have been based on information at the time of publication. Now changed or invalid information may be included.

The URLs in the Tool News also may be subject to change or become invalid without prior notice.

Corporate Headquarters

TOYOSU FORESIA, 3-2-24 Toyosu,
Koto-ku, Tokyo 135-0061, Japan
www.renesas.com

Trademarks

Renesas and the Renesas logo are trademarks of Renesas Electronics Corporation. All trademarks and registered trademarks are the property of their respective owners.

Contact information

For further information on a product, technology, the most up-to-date version of a document, or your nearest sales office, please visit:
www.renesas.com/contact/