

**Outline**

Ver.1.12 of the RX Driver Package for the RX family will be released on the Web.

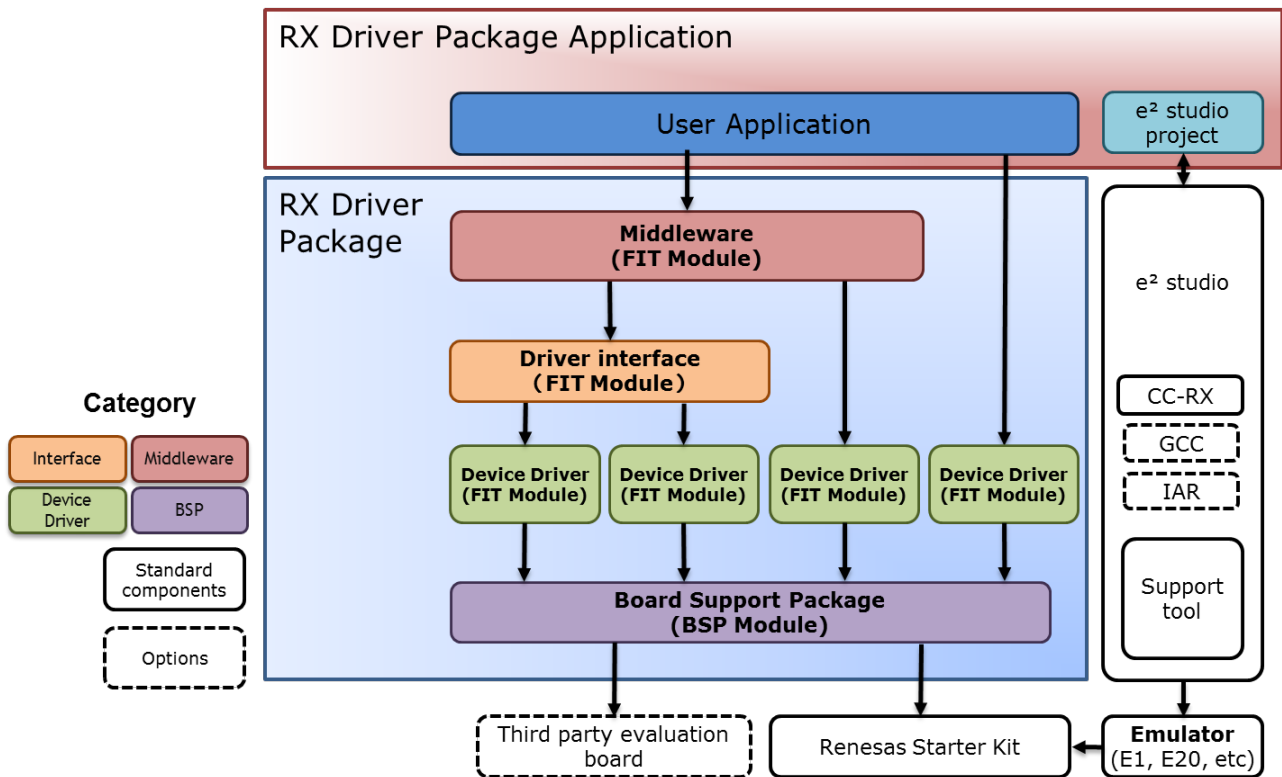
In this product, supported MCUs have been added to RX Driver Package Ver.1.11 and the modules in the packages have been updated.

**1. Features**

(1) About RX Driver Package

RX Driver Package is a software platform (framework) in which modules required for development are consolidated in a single package. Because multiple modules are packaged, you can immediately start development without having to obtain individual modules.

- Board support package (BSP) module
- FIT peripheral function module (evaluation edition)
- FIT middleware module (evaluation edition)
- FIT interface module



## (2) Major changes in RX Driver Package Ver.1.11

### (a) Addition of supported MCUs

- The RX24U group is supported.

### (b) Updating of drivers

- Board support package (BSP): The RX24U group is supported.
- FIT peripheral function module: The RX24U group is supported.
- FIT middleware module: The MCUs shown in section 2 are supported.

## 2. Supported MCUs

RX110, RX111, RX113, RX130, RX210, RX230, RX231, RX23T, RX24T, and RX24U groups

RX63N, RX64M, RX65N, RX651, and RX71M groups

## 3. Operating Environment

The following shows the main operating environment. For details, refer to the application notes\* for this product.

- Integrated development environment: e<sup>2</sup> studio V5.0.1 and later versions
- Cross tool: V2.03.00 and later versions of C/C++ Compiler Package for RX Family
- Emulators: E1, E20, and E2 emulator Lite

\*: Refer to section 4 for information on how to obtain the application notes.

#### 4. Updating Your Product

Use e<sup>2</sup> studio to download RX Driver Package.

(RX Driver Package Ver.1.12 will be available from April 5.)

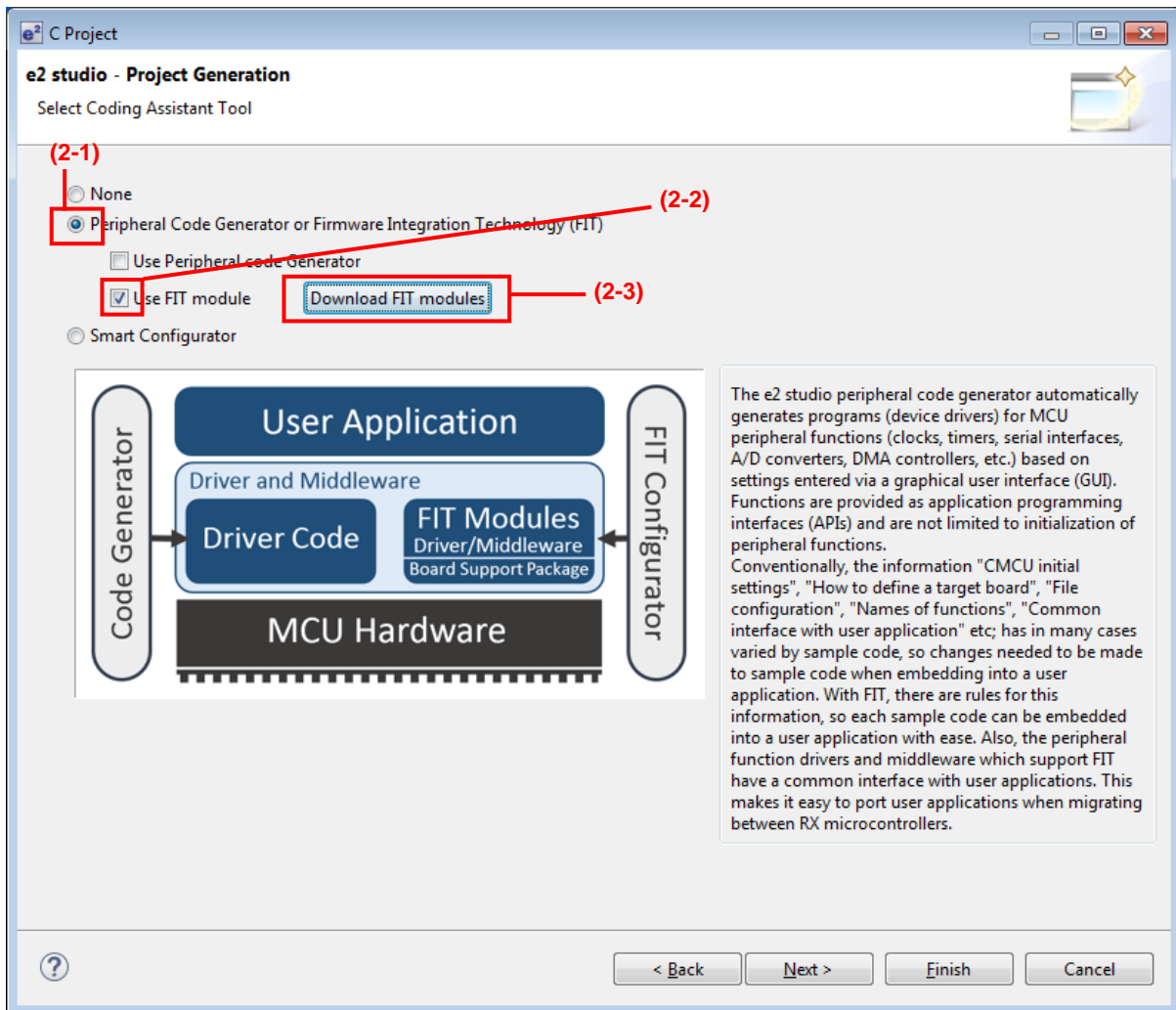
The following describes the download procedure. The display examples use e<sup>2</sup> studio V5.2.0.

Note: If you are using an environment of a version earlier than e<sup>2</sup> studio V5.2.0, download the application note of RX Driver Package Ver.1.10 from the Web site at the following URL. Then, see "4.2 Install RX Driver Package in e<sup>2</sup> studio".

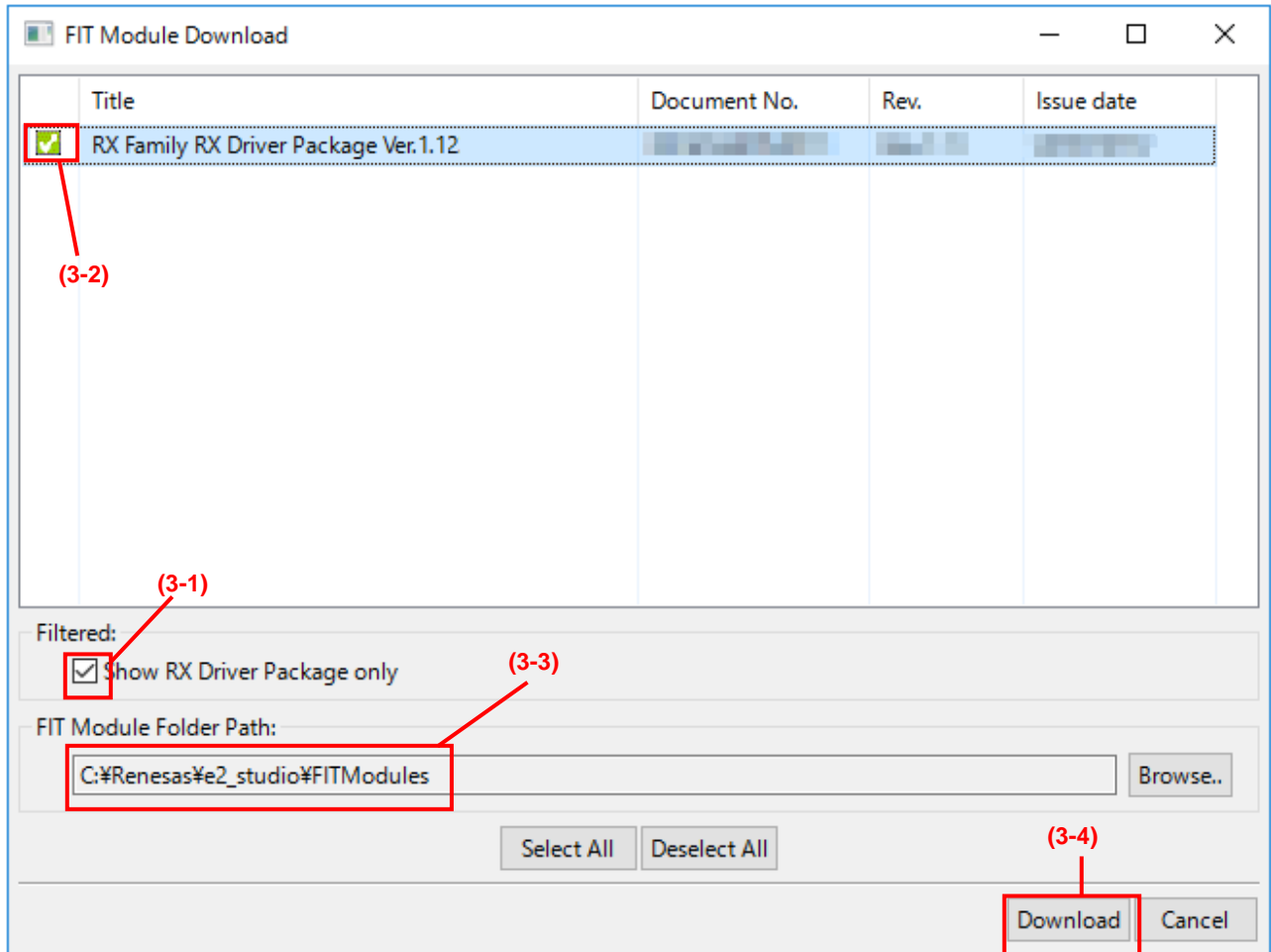
<https://www.renesas.com/search/keyword-search.html#genre=document&q=r01an3345>

(RX Family RX Driver Package Ver.1.10)

- (1) Use e<sup>2</sup> studio to create a new project, and then proceed with the project creation processing until the “Select Coding Assistant Tool” page appears.
- (2) On the “Select Coding Assistant Tool” page, specify the following settings:
  - (2-1) Select [Peripheral Code Generator or Firmware Integration Technology (FIT)].
  - (2-2) Select the [Use FIT module] check box.
  - (2-3) Click [Download FIT modules].

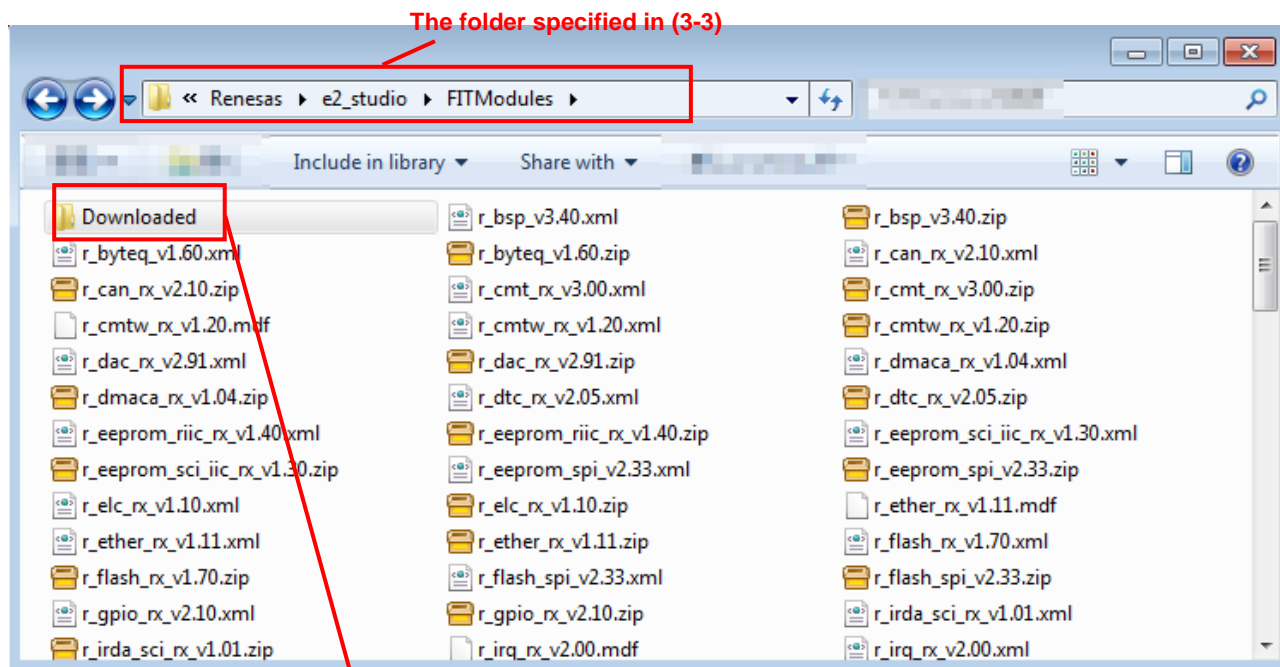


- (3) On the “FIT Module Download” page, specify the following settings:
  - (3-1) Select [Show RX Driver Package only].
  - (3-2) Select the displayed [RX Family RX Driver Package Ver.1.12] check box.
  - (3-3) Specify the location in which the FIT module is to be saved.
  - (3-4) Click [Download].



(4) RX Driver Package is saved in the folder specified in (3-3).

In the Downloaded folder, the ZIP file of this package containing the application note is saved.



**Revision History**

Rev.	Date	Description	
		Page	Summary
1.00	Apr. 1, 2017	-	First edition issued

TOYOSU FORESIA, 3-2-24 Toyosu, Koto-ku, Tokyo 135-0061 Japan  
 Renesas Electronics Corporation

■Inquiry

<https://www.renesas.com/contact/>

Renesas Electronics has used reasonable care in preparing the information included in this document, but Renesas Electronics does not warrant that such information is error free. Renesas Electronics assumes no liability whatsoever for any damages incurred by you resulting from errors in or omissions from the information included herein.

The past news contents have been based on information at the time of publication.

Now changed or invalid information may be included. The URLs in the Tool News also may be subject to change or become invalid without prior notice.

All trademarks and registered trademarks are the property of their respective owners.