

[Notification]

R20TS0973EJ0100

Rev.1.00

Nov.01, 2023

Renesas Starter Kit+ for RZ/A1H

Removal of the Audio Codec

Outline

Because production of the mounted component (Audio Codec) has ended, IC14 of the Renesas Starter Kit+ for RZ/A1H will be removed.

For details about Renesas Starter Kit+ for RZ/A1H, refer to the URL below.

[www.renesas.com/rskrza1](http://www.renesas.com/rskrza1)

1. Removal of the Audio Codec (IC14)

The following component has been used as the Audio Codec for IC14 of the Renesas Starter Kit+ for RZ/A1H. However, the production of the component ended. Therefore, IC14 will no longer be implemented in the starter kit.

Manufacturer: Analog Devices

Part number: MAX9856

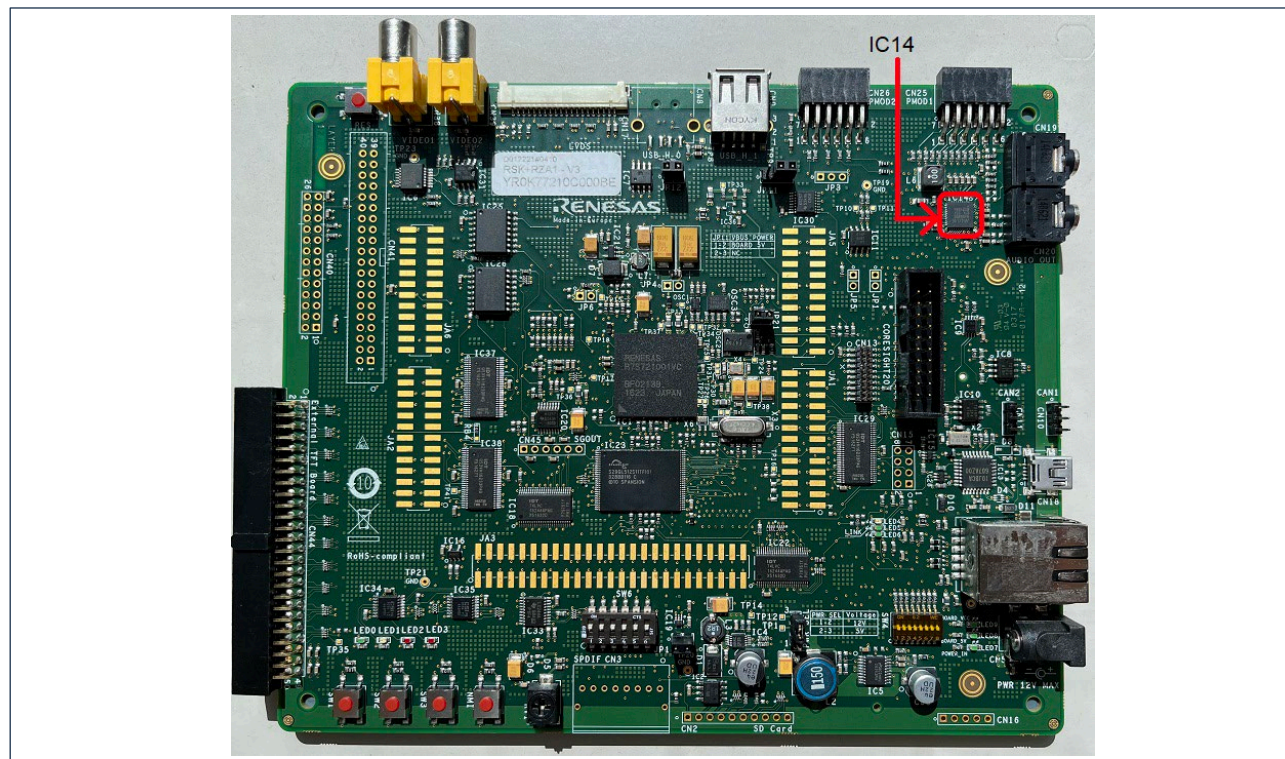


Figure 1 Location of the Audio Codec (Component Side of the Board)

2. Applicable Products

- Product name: Renesas Starter Kit+ for RZ/A1H

The table below shows the details of the product.

Table 1 Applicable Products

Product part number		Product version	Serial No.	How to find product information
Japan	RTK772100BS00000BE	-	This applies to serial numbers excluding serial number 265462 - 265511	See Figure 2.
Outside Japan	YR0K77210S009BE and YR0K77210S011BE	V4 or later	-	See Figure 3.

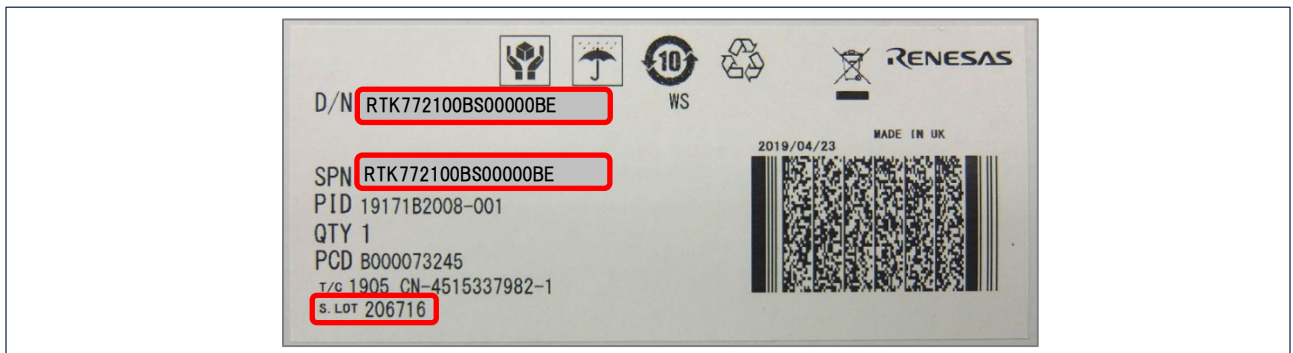


Figure 2 Location of the Product Part Number (Side of an Individual Packing Box for RTK772100BS00000BE)

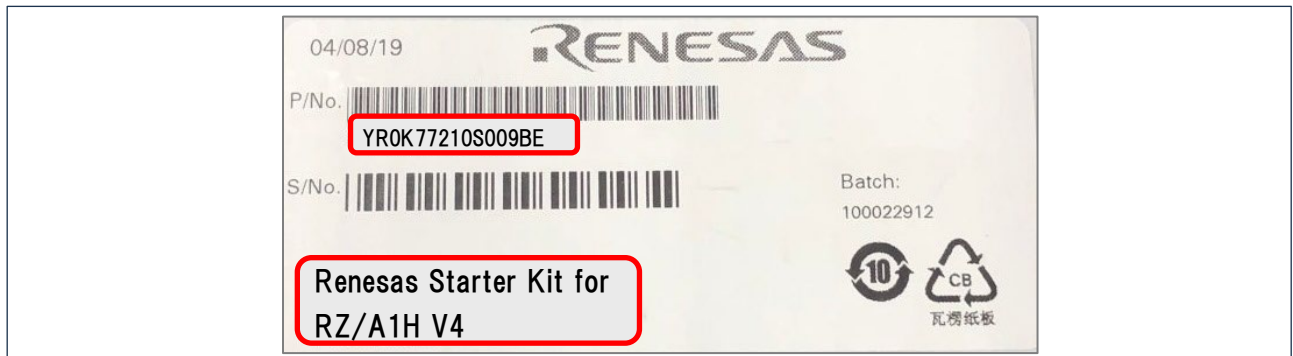


Figure 3 Location of the Product Part Number and Version (Side of an Individual Packing Box for YR0K77210S009BE and YR0K77210S011BE)

### 3. Countermeasures

If you use audio signals, please take the signals from the points indicated below.

Table 2 Audio Signals

Audio Signal	RZ/A1H Port	Signal Point on the Board	Reference Figure
SCL3	P1_6	JA1.Pin26	Figure 4
SDA3	P1_7	JA1.Pin25	Figure 4
IRQ_AUDIO	P3_1	Resistor R106	Figure 4
SSISCK0	P4_4	IC30.Pin4	Figure 5
		JA5.Pin19 *	Figure 5
SSIWS0	P4_5	IC30.Pin7	Figure 5
		JA5.Pin20 *	Figure 5
SSIRXD0	P4_6	IC30.Pin9	Figure 5
		JA5.Pin21 *	Figure 5
SSITXD0	P4_7	IC30.Pin12	Figure 5
		JA5.Pin22 *	Figure 5

\*: When using JA5.Pin19 to JA5.Pin22, PWM function will not be available.

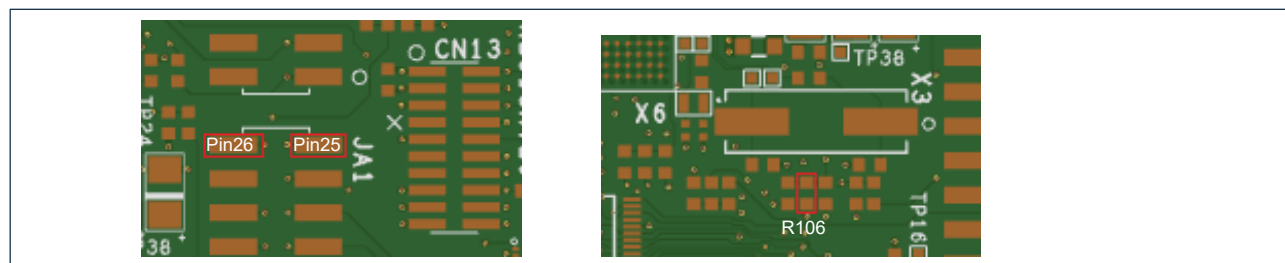


Figure 4 Location of JA1.Pin25 and Pin26 & R106

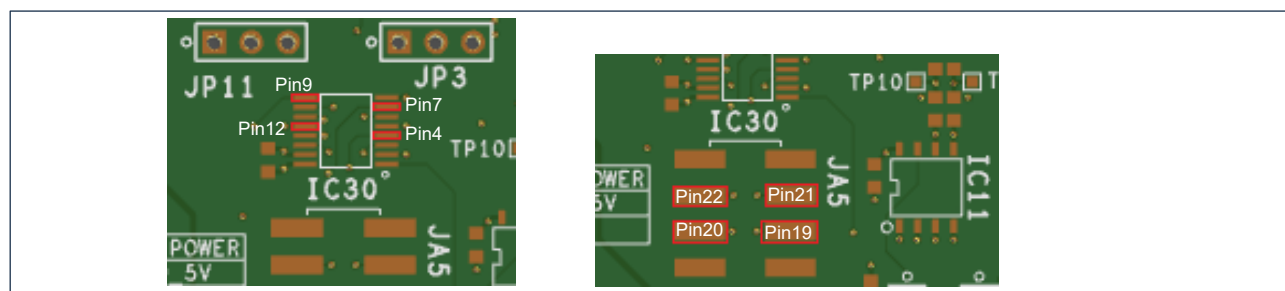


Figure 5 Location of IC30.Pin4, Pin7, Pin9 and Pin12 & JA5.Pin19, Pin20, Pin21, Pin22

**Revision History**

Rev.	Date	Description	
		Page	Summary
1.00	Nov.01.23	-	First edition issued

Renesas Electronics has used reasonable care in preparing the information included in this document, but Renesas Electronics does not warrant that such information is error free. Renesas Electronics assumes no liability whatsoever for any damages incurred by you resulting from errors in or omissions from the information included herein.

The past news contents have been based on information at the time of publication. Now changed or invalid information may be included.

The URLs in the Tool News also may be subject to change or become invalid without prior notice.

**Corporate Headquarters**

TOYOSU FORESIA, 3-2-24 Toyosu,  
Koto-ku, Tokyo 135-0061, Japan  
[www.renesas.com](http://www.renesas.com)

**Trademarks**

Renesas and the Renesas logo are trademarks of Renesas Electronics Corporation. All trademarks and registered trademarks are the property of their respective owners.

**Contact information**

For further information on a product, technology, the most up-to-date version of a document, or your nearest sales office, please visit:  
[www.renesas.com/contact/](http://www.renesas.com/contact/)