
[Notes] Solution Toolkit
QE for Capacitive Touch
Development Assistance Tool for Capacitive Touch Sensors

R20TS0851EJ0100
Rev.1.00
Jun. 01, 2022

Outline

When using the products in the title, note the following points.

1. Notes on using tuning processing via serial communication on CTSU2.

1. Note on using tuning processing via serial communication on CTSU2

1.1 Applicable Products

Development Assistance Tool for Capacitive Touch Sensor

- QE for Capacitive Touch V3.1.0

1.2 Applicable Devices

RX Family: RX140

RA Family: RA2E1, RA2L1

RL78 Family: RL78/G23

1.3 Details

The measured "Parasitic Capacitance" value is incorrect when only one configuration (method) is used, and it contains shield pin.

1.4 Conditions

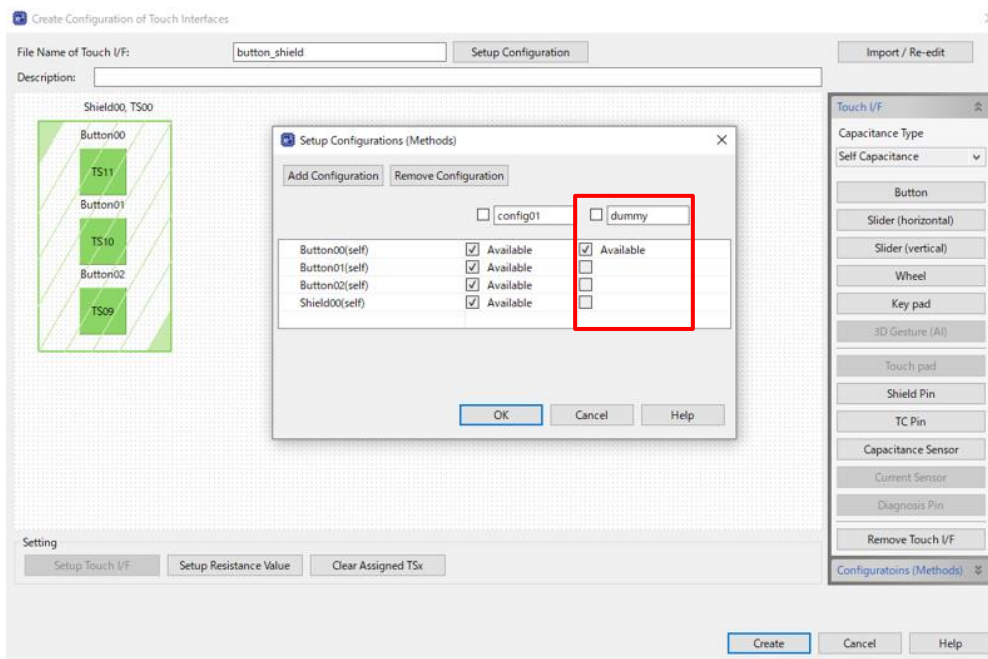
It occurs when the tuning processing via serial communication is used for the corresponding device.

1.5 Workaround

Add a dummy configuration (method) to increase the number of configurations (methods) to two or more.

Example:

1. Add a dummy configuration (method). This configuration (method) does not need to include shield pin.



2. Perform tuning processing via serial communication.
3. Remove code for dummy configuration (method) from sample code of main() function.

```

void qe_touch_main(void)
{
    fsp_err_t err;

    /* Open Touch middleware */
    err = RM_TOUCH_Open(g_qe_touch_instance_config01.p_ctrl, g_qe_touch_instance_config01.p_cfg);
    if (FSP_SUCCESS != err)
    {
        while (true) {}
    }

    err = RM_TOUCH_Open(g_qe_touch_instance_dummy.p_ctrl, g_qe_touch_instance_dummy.p_cfg);
    if (FSP_SUCCESS != err)
    {
        while (true) {}
    }

    /* Main loop */
    while (true)
    {
        /* for [CONFIG01] configuration */
        err = RM_TOUCH_ScanStart(g_qe_touch_instance_config01.p_ctrl);
        if (FSP_SUCCESS != err)
        {
            while (true) {}
        }
        while (0 == g_qe_touch_flag) {}
        g_qe_touch_flag = 0;

        err = RM_TOUCH_DataGet(g_qe_touch_instance_config01.p_ctrl, &button_status, NULL, NULL);
        if (FSP_SUCCESS == err)
        {
            /* TODO: Add your own code here. */
        }

        /* for [DUMMY] configuration */
        err = RM_TOUCH_ScanStart(g_qe_touch_instance_dummy.p_ctrl);
        if (FSP_SUCCESS != err)
        {
            while (true) {}
        }
        while (0 == g_qe_touch_flag) {}
        g_qe_touch_flag = 0;

        err = RM_TOUCH_DataGet(g_qe_touch_instance_dummy.p_ctrl, &button_status, NULL, NULL);
        if (FSP_SUCCESS == err)
        {
            /* TODO: Add your own code here. */
        }

        /* FIXME: Since this is a temporary process, so re-create a waiting process yourself. */
        R_BSP_SoftwareDelay(TOUCH_SCAN_INTERVAL_EXAMPLE, BSP_DELAY_UNITS_MILLISECONDS);
    }
}
    
```

1.6 Schedule for Fixing the Problem

This problem will be fixed in the next version. (Scheduled to be released in January 2023.)

Revision History

Rev.	Date	Description	
		Page	Summary
1.00	Jun.01.22	-	First edition issued

Renesas Electronics has used reasonable care in preparing the information included in this document, but Renesas Electronics does not warrant that such information is error free. Renesas Electronics assumes no liability whatsoever for any damages incurred by you resulting from errors in or omissions from the information included herein.

The past news contents have been based on information at the time of publication. Now changed or invalid information may be included.

The URLs in the Tool News also may be subject to change or become invalid without prior notice.

Corporate Headquarters

TOYOSU FORESIA, 3-2-24 Toyosu,
Koto-ku, Tokyo 135-0061, Japan
www.renesas.com

Trademarks

Renesas and the Renesas logo are trademarks of Renesas Electronics Corporation. All trademarks and registered trademarks are the property of their respective owners.

Contact information

For further information on a product, technology, the most up-to-date version of a document, or your nearest sales office, please visit:
www.renesas.com/contact/