

[Notes]

R20TS1242EJ0100

Rev.1.00

May. 29, 2026

Renesas Emulator and Flash Memory Programmer Products with a USB Interface

Notice Regarding Changes to Windows Driver Policy

Outline

This notice provides important information regarding the use of Renesas emulator and flash memory programmer products with a USB interface, as outlined below.

1. Products Not Affected by the Windows Driver Policy Change
2. Impact of the Windows Driver Policy Change on the E2 Emulator, E2 Emulator Lite, and IE850A, and Recommended Actions
3. Impact of the Windows Driver Policy Change on Other Emulator and Flash Memory Programmer Products

1. Products Not Affected by the Windows Driver Policy Change

1.1 Applicable Products

PG-FP6

1.2 Details

The applicable product is not affected by the Windows driver policy change and may continue to be used without any modification.

2. Impact of the Windows Driver Policy Change on the E2 Emulator, E2 Emulator Lite, and IE850A, and Recommended Actions

2.1 Applicable Products

E2 Emulator, E2 Emulator Lite, IE850A

2.2 Applicable Devices

RA Family, RX Family, RL78 Family, RH850 Family, R-Car Family, RISC-V MCU (R9A02G021)

2.3 Details

Due to the Windows driver policy change introduced in April 2026, the USB driver for Renesas emulator products may fail to load properly on the host PC, preventing the emulator from operating.

When this issue occurs, opening the properties of the applicable product in Device Manager will display the device status as Code 39, along with the message: "This file has been blocked by your application control policy."

2.4 Conditions

This issue occurs on host PCs running the following OS versions when the cumulative update for Windows 11 (KB5083769) or any later update is applied, and certain conditions* are met.

- Windows 11 24H2
- Windows 11 25H2
- Windows 11 26H1 or later (the applicable update is included by default)

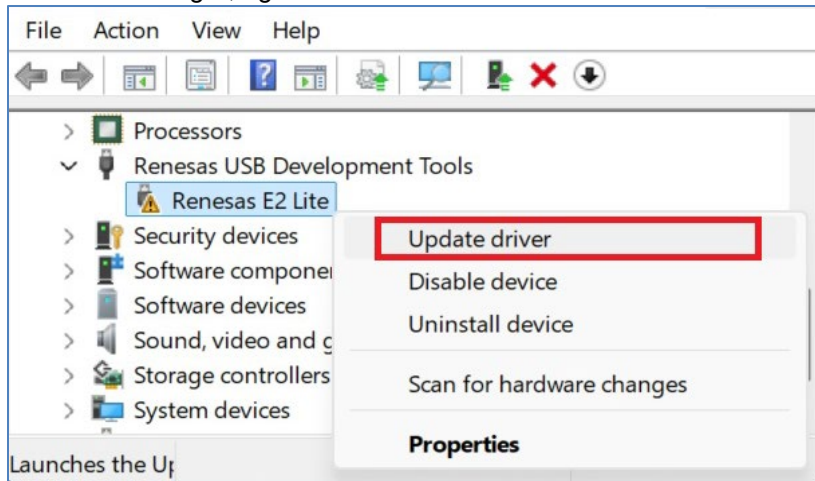
For details, please refer to "[The Windows Driver Policy](#)" on Microsoft Support.

2.5 Workaround

Download the ZIP file provided with this notice and update the USB driver as described below.

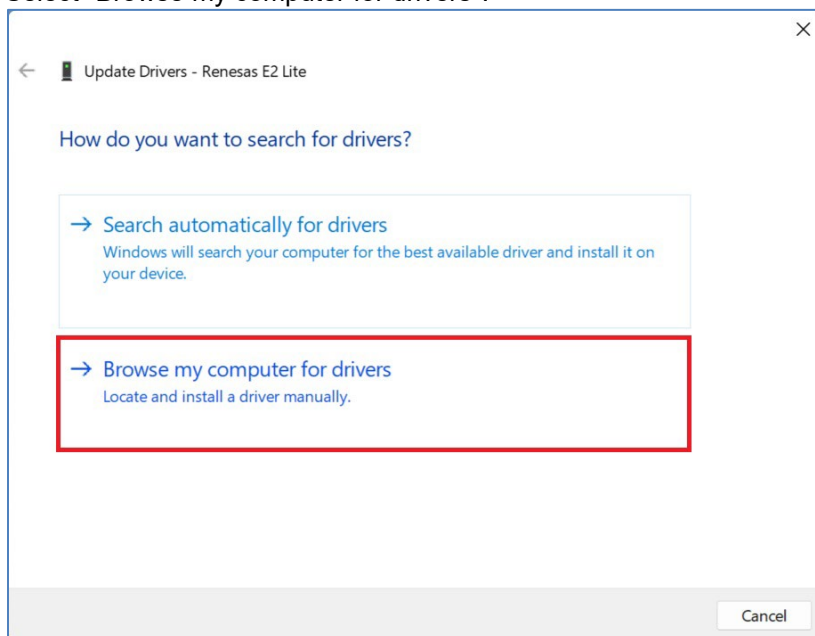
Procedure:

1. Extract the downloaded ZIP file to any folder of your choice.
2. Connect the emulator to the host PC via USB.
3. In Device Manager, right-click the USB-connected emulator and select "Update driver".

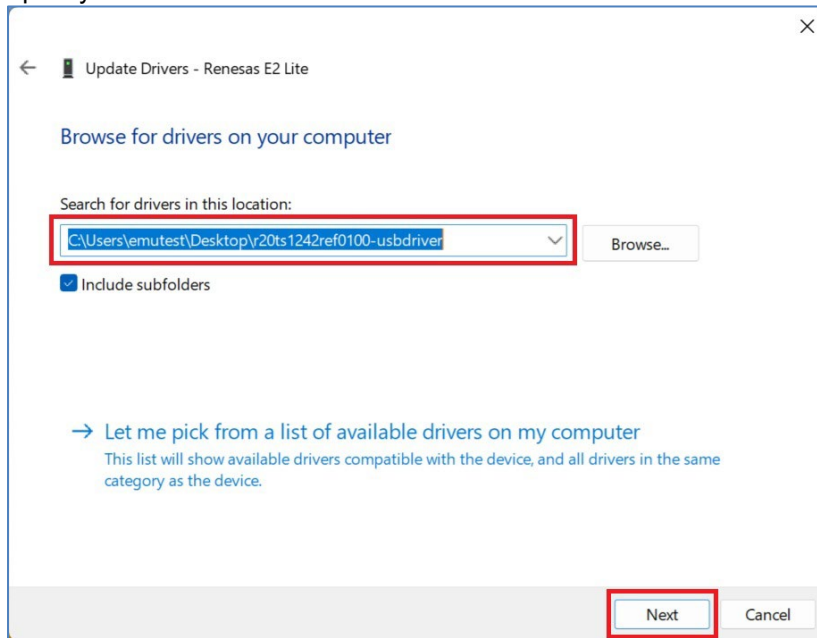


"Update driver" can also be selected from the "Driver" tab of the Properties window, which is displayed by right-clicking the USB-connected emulator and selecting "Properties".

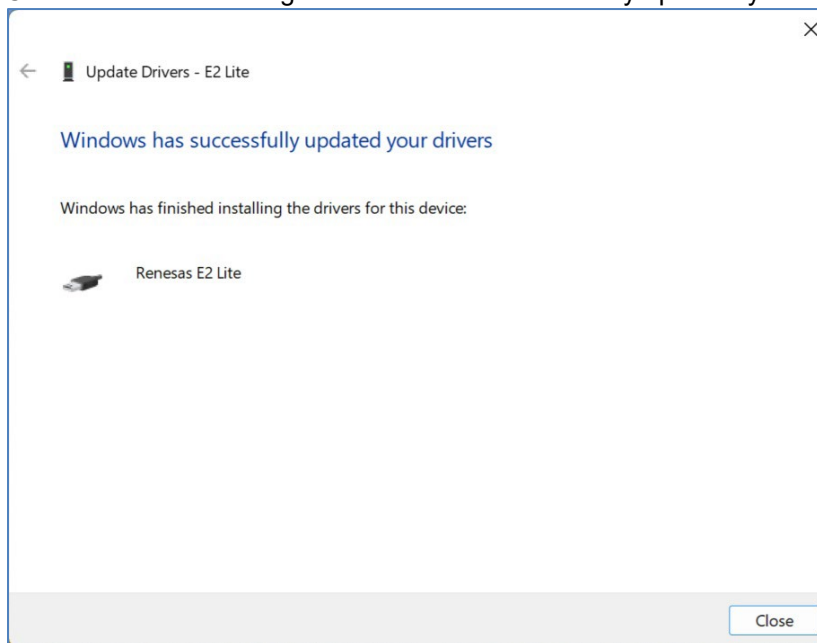
4. Select "Browse my computer for drivers".



- Specify the extracted folder and click "Next".



- Confirm that the message "Windows has successfully updated your drivers" is displayed.



- The emulator can then be used with the integrated development environment or flash programming software.

2.5.1 Notes

Please note the following when applying this workaround.

- Please install and use the latest versions of the integrated development environment and flash programming software. Older versions may not operate correctly.
- When debugging with the e² studio integrated development environment, the emulator serial number will not be displayed, and multiple emulators cannot be connected simultaneously. This limitation will be addressed in a future update. This limitation does not apply to CS+.
- When debugging RH850 family devices, the following functions are not available. These limitations will be addressed in a future update.
 - (1) E2 Emulator:
 - Software trace (LPD output) function
 - External trigger input/output function
 - CAN communication time measurement function
 - Synchronized debugging of multiple devices
 - (2) IE850A:
 - Synchronized debugging of multiple devices
- When debugging R-Car family devices (R-Car S4, R-Car V4H/V4M), the following functions are not available. These limitations will also be addressed in a future update.
 - (1) E2 Emulator:
 - Real-time Performance Monitor (RPM) function
 - Synchronized debugging of multiple devices

2.6 Schedule for Fixing the Problem

The workaround will be provided as an installer. This update is scheduled for release in July 2026.

3. Impact of the Windows Driver Policy Change on Other Emulator and Flash Memory Programmer Products

3.1 Applicable Products

Emulator and flash memory programmer products other than the E2 Emulator, E2 Emulator Lite, and IE850A.

Examples: E1 Emulator, E20 Emulator, E10A-USB Emulator, E8a Emulator, MINICUBE2 Emulator, IECUBE Emulator, IE850 Emulator, E100 Emulator, PG-FP5, etc.

3.2 Applicable Devices

78K Family, H8 Family, R8C Family, RL78 Family, H8S Family, H8SX Family, M16C Family, R32C Family, RX Family, SuperH Family, RH850 Family, V850 Family, 740 Family, etc.

3.3 Details

Due to the Windows driver policy change introduced in April 2026, the USB drivers provided by Renesas may fail to load properly on the host PC, which may render the emulator or flash memory programmer unusable.

When this issue occurs, opening the properties of the applicable product in Device Manager will display the device status as Code 39, along with the message: "This file has been blocked by your application control policy."

3.4 Conditions

This issue occurs on host PCs running the following OS versions when the cumulative update for Windows 11 (KB5083769) or any subsequent cumulative update has been applied, and certain conditions* are met.

- Windows 11 24H2
- Windows 11 25H2
- Windows 11 26H1 or later (the applicable update is included by default)

For details, please refer to "[The Windows Driver Policy](#)" on Microsoft Support.

3.5 Workaround

Please use the products in an environment running Windows 11 23H2 or earlier.

Any additional workarounds will be announced separately once they have been confirmed.

3.6 Schedule for Fixing the Problem

There are currently no plans to provide a permanent fix.

Revision History

Rev.	Date	Description	
		Page	Summary
1.00	May.29.26	-	First edition issued

Renesas Electronics has used reasonable care in preparing the information included in this document, but Renesas Electronics does not warrant that such information is error free. Renesas Electronics assumes no liability whatsoever for any damages incurred by you resulting from errors in or omissions from the information included herein.

The past news contents have been based on information at the time of publication. Now changed or invalid information may be included.

The URLs in the Tool News also may be subject to change or become invalid without prior notice.

Corporate Headquarters

TOYOSU FORESIA, 3-2-24 Toyosu,
Koto-ku, Tokyo 135-0061, Japan
www.renesas.com

Trademarks

Renesas and the Renesas logo are trademarks of Renesas Electronics Corporation. All trademarks and registered trademarks are the property of their respective owners.

Contact information

For further information on a product, technology, the most up-to-date version of a document, or your nearest sales office, please visit:
www.renesas.com/contact/