

RENESAS TECHNICAL UPDATE

TOYOSU FORESIA, 3-2-24, Toyosu, Koto-ku, Tokyo 135-0061, Japan
Renesas Electronics Corporation

Product Category	MPU/MCU		Document No.	TN-RZ*-A0126A/E	Rev.	1.00
Title	RZ/G2H, G2M V1.3, G2M V3.0 and G2N Addition of drivability recommendation for section 46.EthernetAVB-IF		Information Category	Technical Notification		
Applicable Product	RZ/G Series, 2nd Generation	Lot No.	Reference Document	RZ/G Series, 2nd Generation User's Manual: Hardware Rev.1.11 (R01UH0808EJ0111)		
	RZ/G2H RZ/G2M V1.3 RZ/G2M V3.0 RZ/G2N	All lots				

This technical update describes document correction of RZ/G Series, 2nd Generation product.

[Summary]

Addition of drivability recommendation for section 46.EthernetAVB-IF

[Priority level]

Importance: "Normal"

Urgency: "Normal"

[Products]

RZ/G2H

RZ/G2M V1.3, V3.0

RZ/G2N

[Section number and title]

Section 46. EthernetAVB-IF

“This is empty adjustment page to compare next Current (from) and Correction (to) on facing page. “

(By using two pages view of PDF readers this enables previously and prospectively view on odd and even pages.)

[Correction]

1. Section 46. EthernetAVB-IF, Page 46-334, 46.4.5 EthernetAVB-IF Drivability Recommendation is added.

Current (from):

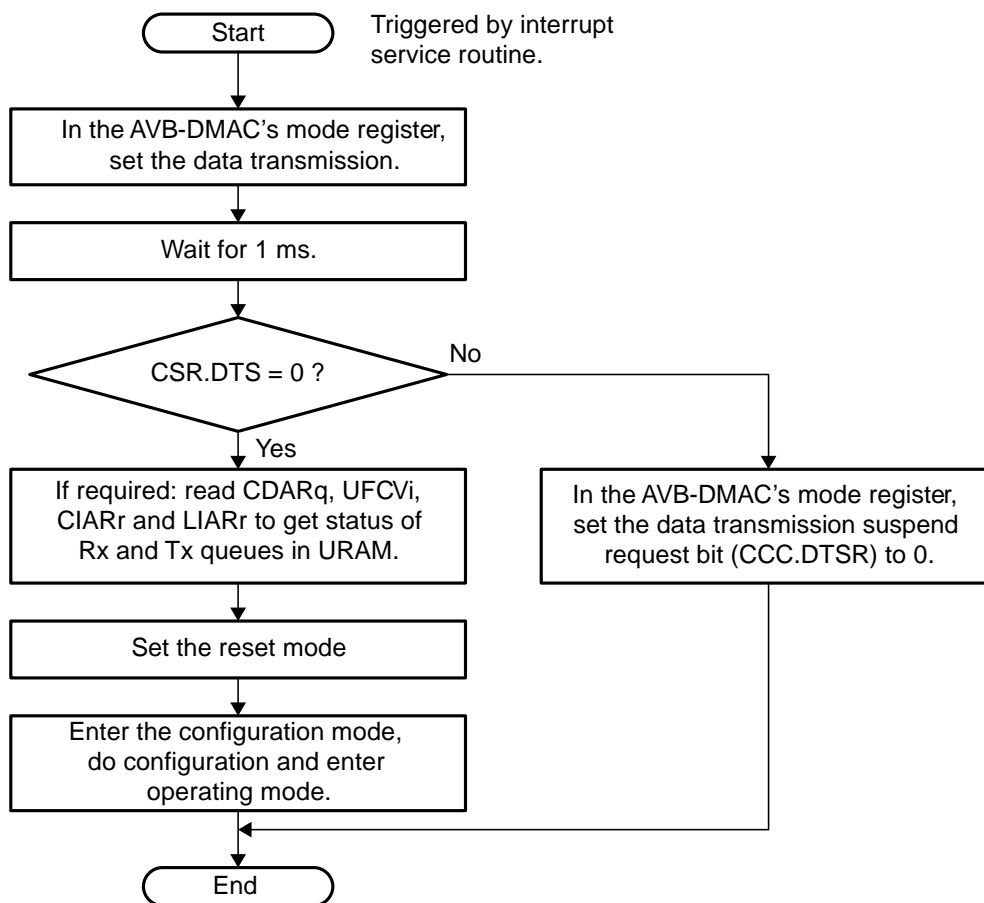


Figure 46.91 Data Transfer Function Stop Flow2 after Read Access Error

46.4.3 Power Down Request

If EthernetAVB-IF gets a power down request while writing to work RAM, it may happen that the request is not accepted even if the transfer is completed. Due to this the external power down module cannot complete the power down sequence.

A power down request is acceptable only when EthernetAVB-IF is in RESET state.

Correct (to):

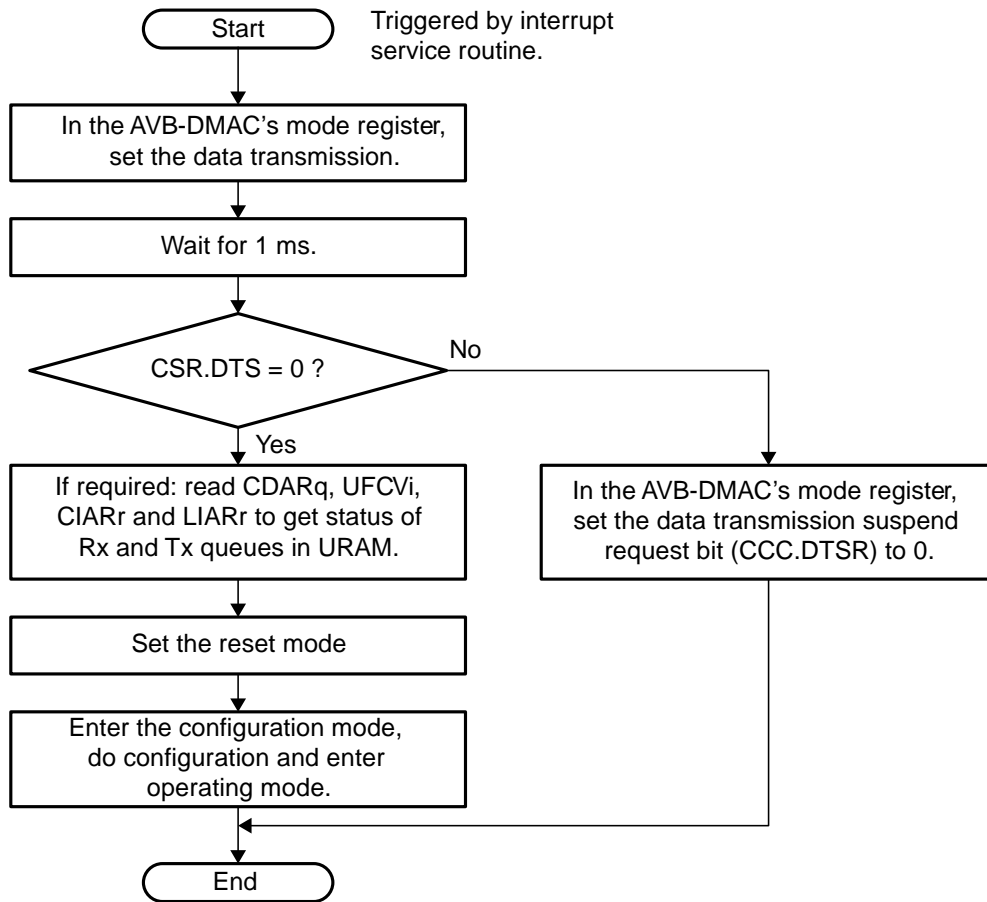


Figure 46.91 Data Transfer Function Stop Flow2 after Read Access Error

46.4.3 Power Down Request

If EthernetAVB-IF gets a power down request while writing to work RAM, it may happen that the request is not accepted even if the transfer is completed. Due to this the external power down module cannot complete the power down sequence. A power down request is acceptable only when EthernetAVB-IF is in RESET state.

46.4.4 Ethernet AVB RGMII Clock Delay Mode is generating low analog delay for RZ/G2M V1.3

When using LSI's transmit internal delay mode in RGMII transmission, an error may be detected by the opposite device. Background is that not sufficient analog delay is generated by the Internal delay function. Please note that AC specification of RZ/G2M V1.3 is different for other RZ/G second generation products.

46.4.5 EthernetAVB-IF Drivability Recommendation [RZ/G2H, RZ/G2M (V1.3, V3.0), RZ/G2N]

Drivability recommendation is 5/8 (0x04). Please refer to Chapter 8. Pin function Controller (PFC) for the configuration of the Drive capability.

[Description]

Addition of drivability recommendation for EtherAVB 1Gbps mode.

Note: Section 46.4.4 is already announced by the Technical Update: TN-RZ*-A0087A/E. For detail refer to the document.

[Reason for Correction]

Possibility of rush current in IO-Buffer.

- End of Document -