

Customer Notification

Flash Programmer

PG-FP4-E

Operating Precautions

GUI / Firmware / Hardware

DISCLAIMER

The related documents in this customer notification may include preliminary versions. However, preliminary versions may not have been marked as such.

The information in this customer notification is current as of its date of publication. The information is subject to change without notice. For actual design-in, refer to the latest publications of NEC's data sheets or data books, etc., for the most up-to-date specifications of NEC PRODUCT(S). Not all PRODUCT(S) and/or types are available in every country. Please check with an NEC sales representative for availability and additional information.

No part of this customer notification may be copied or reproduced in any form or by any means without prior written consent of NEC. NEC assumes no responsibility for any errors that may appear in this customer notification. NEC does not assume any liability for infringement of patents, copyrights or other intellectual property rights of third parties by or arising from the use of NEC PRODUCT(S) listed in this customer notification or any other liability arising from the use of such PRODUCT(S).

No license, express, implied or otherwise, is granted under any patents, copyrights or other intellectual property rights of NEC or others. Descriptions of circuits, software and other related information in this customer notification are provided for illustrative purposes of PRODUCT(S) operation and/or application examples only. The incorporation of these circuits, software and information in the design of customer's equipment shall be done under the full responsibility of customer. NEC assumes no responsibility for any losses incurred by customers or third parties arising from the use of these circuits, software and information.

While wherever feasible, NEC endeavors to enhance the quality, reliability and safe operation of PRODUCT(S) the customer agree and acknowledge that the possibility of defects and/or erroneous thereof cannot be eliminated entirely. To minimize risks of damage to property or injury (including death) to persons arising from defects and/or errors in PRODUCT(S) the customer must incorporate sufficient safety measures in their design, such as redundancy, fire-containment and anti-failure features.

The customer agrees to indemnify NEC against and hold NEC harmless from any and all consequences of any and all claims, suits, actions or demands asserted against NEC made by a third party for damages caused by one or more of the items listed in the enclosed table of content of this customer notification for PRODUCT(S) supplied after the date of publication.

Applicable Law:

The law of the Federal Republic of Germany applies to all information provided by NEC to the Customer under this Operating Precaution document without the possibility of recourse to the Conflicts Law or the law of 5th July 1989 relating to the UN Convention on Contracts for the International Sale of Goods (the Vienna CISG agreement).

Düsseldorf is the court of jurisdiction for all legal disputes arising directly or indirectly from this information. NEC is also entitled to make a claim against the Customer at his general court of jurisdiction.

If the supplied goods/information are subject to German, European and/or North American export controls, the Customer shall comply with the relevant export control regulations in the event that the goods are exported and/or re-exported. If deliveries are exported without payment of duty at the request of the Customer, the Customer accepts liability for any subsequent customs administration claims with respect to NEC.

Notes: (1) "**NEC**" as used in this statement means NEC Electronics Corporation and also includes its direct or indirect owned or controlled subsidiaries.

(2) "**PRODUCT(S)**" means 'NEC semiconductor products' (*NEC semiconductor products* means any semiconductor product developed or manufactured by or for NEC) and/or 'TOOLS' (*TOOLS* means 'hardware and/or software development tools' for NEC semiconductor products' developed, manufactured and supplied by 'NEC' and/or 'hardware and/or software development tools' supplied by NEC but developed and/or manufactured by independent 3rd Party vendors worldwide as their own product or on contract from NEC)

Table of Contents

(A)	Product Versions.....	4
(B)	Table of Addition and Changes to Specifications.....	5
(C)	Description of Addition and Changes to Specifications.....	8
(D)	Cautions.....	16
(E)	Table of Restrictions.....	17
(F)	Description of Restrictions.....	19
(G)	Table of Operating Precautions (Documentation).....	27
(H)	Description of Operating Precautions (Documentation).....	28
(I)	Description of new features in GUI version 2.17 and later	30
(J)	Revision History	37

Operating Precautions for PG-FP4-E

(A) Product Versions

Control Code ^{Note}	Item No.	Firmware	GUI Software	Remark
B	<1>	V1.16	V1.09	Hardware Limitation exists; see Restriction item 17
C	<2>	V1.17	V2.00	Hardware Limitation exists; see Restriction item 17
	<3>	V1.18	V2.02	Hardware Limitation exists; see Restriction item 17
	<4>	V1.19	V2.04	Hardware Limitation exists; see Restriction item 17
E	<5>	V1.21	V2.05	
E, F	<6>	V1.23	V2.05	
E, F	<7>	V1.30	V2.11	
E, F	<8>	V1.31	V2.13	
G	<9>	V1.32	V2.14	
	<10>	V1.33	V2.15	
H	<11>	V1.34	V2.16	
	<12>	V1.35	V2.16	
	<13>	V1.36	V2.17	
	<14>	V1.37	V2.18	
	<15>	V1.38	V2.19	
	<16>	V1.39	V2.20	

<Version confirmation>

- Firmware version: Displayed by selecting [Reset] from the [Programmer] menu
- GUI software version: Displayed by selecting [About] from the [Help] menu

Note The "Control Code" is the second digit from the left in the 10-digit serial number.
 If the product has been upgraded, a label indicating the new version is attached to the product and the x in V-UP LEVEL x on this label indicates the control code.

(B) 3. Table of Addition and Changes to Specifications

No.	Additions and Changes to Specifications	Issue Number															
		<1>	<2>	<3>	<4>	<5>	<6>	<7>	<8>	<9>	<10>	<11>	<12>	<13>	<14>	<15>	<16>
1	IIC communication	×	○	○	○	○	○	○	○	○	○	○	○	○	○	○	○
2	Single-power-supply flash memory microcontroller	×	○	○	○	○	○	○	○	○	○	○	○	○	○	○	○
3	Addition of program area switching icon	×	×	○	○	○	○	○	○	○	○	○	○	○	○	○	○
4	Update of USB driver	×	×	○	○	○	○	○	○	○	○	○	○	○	○	○	○
5	Modification of specification of baud rate selection in UART communication mode	×	×	×	○	○	○	○	○	○	○	○	○	○	○	○	○
6	Modification of specification of multiplication rate selection format	×	×	×	×	○	○	○	○	○	○	○	○	○	○	○	○
7	Addition of display of number of VPP/FLMD pulses when selecting communication port	×	×	×	×	○	○	○	○	○	○	○	○	○	○	○	○
8	Addition of subcommands to Read command	×	×	×	×	×	×	○	○	○	○	○	○	○	○	○	○
9	Addition of Get Security Settings command	×	×	×	×	×	×	○	○	○	○	○	○	○	○	○	○
10	Addition of Boot block cluster setting function	×	×	×	×	×	×	○	○	○	○	○	○	○	○	○	○
11	Addition of Read command disable function	×	×	×	×	×	×	○	○	○	○	○	○	○	○	○	○
12	Addition of Boot block cluster reprogramming disable function	×	×	×	×	×	×	○	○	○	○	○	○	○	○	○	○
13	Addition of reset vector address transmit function	×	×	×	×	×	×	○	○	○	○	○	○	○	○	○	○
14	<File checksum> Addition of Arithmetic checksum (16 bits) and modification of GUI display	×	×	×	×	×	×	○	○	○	○	○	○	○	○	○	○
15	Modification of CRC command specification	×	×	×	×	×	×	○	○	○	○	○	○	○	○	○	○
16	Addition of 57,600 bps, 115,200 bps, 128,000 bps to GUI baud rate selection menu for UART communication	×	×	×	×	×	×	○	○	○	○	○	○	○	○	○	○
17	Modification of target power supply detection function	×	×	×	×	×	×	○	○	○	○	○	○	○	○	○	○
18	Modification of [Upload...] menu specifications (1)	×	×	×	×	×	×	○	○	○	○	○	○	○	○	○	○
19	Modification of [Upload...] menu specifications (2)	×	×	×	×	×	×	○	○	○	○	○	○	○	○	○	○

—: Not relevant, ×: Specification change not implemented, ○: Specification change implemented

Operating Precautions for PG-FP4-E

No.	Additions and Changes to Specifications	Issue Number															
		<1>	<2>	<3>	<4>	<5>	<6>	<7>	<8>	<9>	<10>	<11>	<12>	<13>	<14>	<15>	<16>
20	Modification of [Logging] menu specifications	×	×	×	×	×	×	○	○	○	○	○	○	○	○	○	○
21	Modification of GUI specification when host machine is shut down	×	×	×	×	×	×	○	○	○	○	○	○	○	○	○	○
22	Modification of specification when Disable Chip Erase is selected and GUI information message is cancelled	×	×	×	×	×	×	○	○	○	○	○	○	○	○	○	○
23	Modification of [Upload...] menu specifications (3)	×	×	×	×	×	×	○	○	○	○	○	○	○	○	○	○
24	Modification of default communication speed	×	×	×	×	×	×	○	○	○	○	○	○	○	○	○	○
25	Addition of function to display Checksum command execution result on LCD	×	×	×	×	×	×	○	○	○	○	○	○	○	○	○	○
26	Improvement in noise characteristics	×	×	×	×	×	×	○	○	○	○	○	○	○	○	○	○
27	Deletion of READ command in standalone mode	—	—	—	—	—	—	×	×	○	○	○	○	○	○	○	○
28	Modification of LCD display for Option Setting menu in standalone mode	×	×	×	×	×	×	×	○	○	○	○	○	○	○	○	○
29	Addition of Progarea size display	×	×	×	×	×	×	×	○	○	○	○	○	○	○	○	○
30	Support of single-wire UART communication (78K0S/Kx1+)	×	×	×	×	×	×	×	○	○	○	○	○	○	○	○	○
31	Addition of 9 MHz to clocks supplied from PG-FP4	×	×	×	×	×	×	×	×	○	○	○	○	○	○	○	○
32	Modification of percentage display when a verify error occurs in block mode with single-power-supply flash memory microcontroller	×	×	×	×	×	×	×	×	○	○	○	○	○	○	○	○
33	Addition of function for selecting enable/disable of power supply detection function at VDD pin	—	—	—	—	—	—	×	×	×	×	○	○	○	○	○	○
34	Modification of specification so as not to supply VDD2 when output voltage at VDD2 pin is set to 2.0 V or lower	×	×	×	×	×	×	×	×	×	×	○	○	○	○	○	○
35	Modification of display of [Download] menu and [Upload] menu	×	×	×	×	×	×	×	×	×	×	○	○	○	○	○	○
36	Change of default settings of File Checksum	×	×	×	×	×	×	×	×	×	×	○	○	○	○	○	○

—: Not relevant, ×: Specification change not implemented, ○: Specification change implemented

Operating Precautions for PG-FP4-E

No.	Additions and Changes to Specifications	Issue Number															
		<1>	<2>	<3>	<4>	<5>	<6>	<7>	<8>	<9>	<10>	<11>	<12>	<13>	<14>	<15>	<16>
37	Addition of specifications to cope with a bug in μ PD70F3025A rank M	×	×	×	×	×	×	×	×	×	×	×	○	○	○	○	○
38	Support of devices with code flash and data flash areas	—	—	—	—	—	—	×	×	×	×	×	×	○	○	○	○
39	Support of specifications in conjunction with support of 78K0R	—	—	—	—	—	—	×	×	×	×	×	×	○	○	○	○
40	Change of specification to conform the Read command Intel format	—	—	—	—	—	—	×	×	×	×	×	×	○	○	○	○
41	Change of Cancel button specification	×	×	×	×	×	×	×	×	×	×	×	×	×	○	○	○
42	Change of specification for COM port selection	×	×	×	×	×	×	×	×	×	×	×	×	×	○	○	○
43	Addition of function for checking program files size	×	×	×	×	×	×	×	×	×	×	×	×	×	×	○	○
44	Addition of specification of UART communication at 500 kbps	×	×	×	×	×	×	×	×	×	×	×	×	×	×	×	○

—: Not relevant, ×: Specification change not implemented, ○: Specification change implemented

(C) Description of Addition and Changes to Specifications

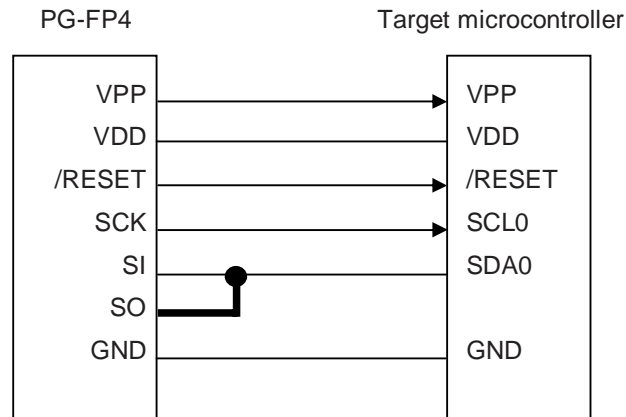
No. 1 IIC communication

[Description]

The IIC communication mode adapter board is included.

When using IIC communication mode with PG-FP4 control code B, short the SI and SO pins in the PG-FP4.

Connection example



[Implementation]

The IIC communication mode adapter board is included in products with control code C (firmware: V1.17, GUI: V2.00) and later. Use the IIC communication mode adapter board for IIC communication.

No. 2 Single-power-supply flash memory microcontroller

[Description]

The single-power-supply flash memory microcontroller is supported.

[Implementation]

This item has been implemented in products with control code C (firmware: V1.17, GUI: V2.00) and later.

No. 3 Addition of program area switching icon

[Description]

The program area switching icon has been added to the toolbar for the programming GUI.

Switch the program area using [Select Programming Area...] on the [Programmer] menu.

[Implementation]

This item has been implemented in products with control code C (firmware: V1.18, GUI: V2.02) and later.

No. 4 Update of USB driver

[Description]

Some of the USB driver specifications required in the Windows 2000 Service Pack 2 (SP2) environment was changed. Accompanied by this change, the USB driver included in the PG-FP4 has also been changed to meet the required specifications.

Operating Precautions for PG-FP4-E

[How to upgrade]

How to update a USB driver already installed is described below.

1. Open Device Manager in Windows.
2. Select "USBIO Device..... (NEC Flash Programmer)" under "USBIO controlled devices" and click [Properties].
3. Select the Driver tab and execute [Update Driver...] to update the driver.

Use the driver under the directory Setup\Drivers included in programming GUI V.2.02 and later.

No. 5 Modification of specification of baud rate selection in UART communication mode

[Description]

4,800 bps has been deleted from the baud rate selection list in the UART communication mode.

[Implementation]

This item has been implemented in products with control code C (firmware: V1.19, GUI: V2.04) and later.

No. 6 Modification of specification of multiplication rate selection format

[Description]

The multiplication rate can be separately selected for Direct mode and PLL mode. In addition, the multiplication rate can be directly input in PLL mode.

[Implementation]

This item has been implemented in products with control code E (firmware: V1.21, GUI: V2.05) and later.

No. 7 Addition of display of number of VPP/FLMD pulses when selecting communication port

[Description]

The number of VPP or FLMD pulses output from the PG-FP4 is displayed when selecting the communication port.

[Implementation]

This item has been implemented in products with control code E (firmware: V1.21, GUI: V2.05) and later.

No. 8 Addition of subcommands to Read command

[Description]

[View] (displays the read data in the communication log window), [Write Intel HEX file] (displays and saves the read data in the Intel HEX format), and [Write Motorola SREC file] (displays and saves the read data in the Motorola SREC format) can be executed from the [Read] menu when using a device that can read device data.

[Implementation]

This item has been implemented in products with control code E (firmware: V1.30, GUI: V2.11) and later.

No. 9 Addition of Get Security Settings command

[Description]

The Get Security Settings command can be executed when using a device that can check the security status inside the device.

[Implementation]

This item has been implemented in products with control code E (firmware: V1.30, GUI: V2.11) and later.

No. 10 Addition of Boot block cluster setting function

[Description]

The Boot block cluster setting function can be executed when using a device that can set boot swap.

[Implementation]

This item has been implemented in products with control code E (firmware: V1.30, GUI: V2.11) and later.

Operating Precautions for PG-FP4-E

No. 11 Addition of Read command disable function

[Description]

The Disable Read function can be executed when using a device that can disable the Read command using a security setting.

[Implementation]

This item has been implemented in products with control code E (firmware: V1.30, GUI: V2.11) and later.

No. 12 Addition of Boot block cluster reprogramming disable function

[Description]

The Disable Boot block cluster reprogramming function can be executed when using a device that can disable the Boot block cluster reprogramming function using a security setting.

[Implementation]

This item has been implemented in products with control code E (firmware: V1.30, GUI: V2.11) and later.

No. 13 Addition of reset vector address transmit function

[Description]

The Reset vector can be executed when using a device that can transmit the Reset vector address using a security setting.

[Implementation]

This item has been implemented in products with control code E (firmware: V1.30, GUI: V2.11) and later.

No. 14 <File checksum> Addition of Arithmetic checksum (16 bits) and modification of GUI display

[Description]

The specification has been modified so that the Arithmetic checksum (16 bits) can be used for the File checksum function.

In addition, the result of the checksum is displayed in the programmer parameter window, and initialized when a new file is downloaded.

[Implementation]

This item has been implemented in products with control code E (firmware: V1.30, GUI: V2.11) and later.

No. 15 Modification of CRC command specification

[Description]

In conjunction with modification of the specification of the File checksum function, the crc command used when downloading a file or executing EPV has been changed to the `crc_no_store` command.

[Implementation]

This item has been implemented in products with control code E (firmware: V1.30, GUI: V2.11) and later.

No. 16 Addition of 57,600 bps, 115,200 bps, and 128,000 bps to GUI baud rate selection menu for UART communication

[Description]

The serial baud rate specification has been modified so that 57,600 bps, 115,200 bps, and 128,000 bps can be selected in the device to make allowances for the speed of UART communication in future flash memory macros.

[Implementation]

This item has been implemented in products with control code E (firmware: V1.30, GUI: V2.11) and later.

Operating Precautions for PG-FP4-E

No. 17 Modification of target power supply detection function

[Description]

The specification has been modified so that the target power supply detection function operates under the following settings.

(1) When VDD is supplied from the PG-FP4

The error message "Target power detected! Check Setup." is displayed when the target VDD is 0.2 V or higher before VDD is supplied from the PG-FP4

(2) When VDD is supplied from the target

The error message "No VDD applied or Voltage is out of range" is displayed when VDD is $\pm 5\%$ out of the set range immediately before communication is started.

[Implementation]

This item has been implemented in products with control code E (firmware: V1.30, GUI: V2.11) and later.

No. 18 Modification of [Upload...] menu specifications (1)

[Description]

With the conventional specifications, if the [Open] button in the window opened by selecting the [Upload...] menu is clicked, data is displayed immediately. With the new specifications, the message "Press <return> to start/continue output" is displayed and keeps users waiting for the upload data to be displayed.

[Implementation]

This item has been implemented in products with control code E (firmware: V1.30, GUI: V2.11) and later.

No. 19 Modification of [Upload...] menu specifications (2)

[Description]

With the conventional specifications, no extension is appended to the file name if a file is saved without specifying the extension in the window opened by selecting the [Upload...] menu. With the new specifications, .hex or .rec is appended.

[Implementation]

This item has been implemented in products with control code E (firmware: V1.30, GUI: V2.11) and later.

No. 20 Modification of [Logging] menu specifications

[Description]

With the conventional specifications, no extension is appended to the file name if a file is saved without specifying the extension in the window opened by selecting the [Logging] menu. With the new specifications, .txt is appended.

[Implementation]

This item has been implemented in products with control code E (firmware: V1.30, GUI: V2.11) and later.

No. 21 Modification of GUI specification when host machine is shut down

[Description]

With the conventional specifications, the GUI of the PG-FP4 must be shut down before shutting down the host machine. With the new specifications, the GUI of the PG-FP4 is automatically shut down.

[Implementation]

This item has been implemented in products with control code E (firmware: V1.30, GUI: V2.11) and later.

No. 22 Modification of specification when Disable Chip Erase is selected and GUI information message is cancelled

[Description]

With the conventional specifications, if the [Cancel] button is clicked for the GUI information message that pops up when Disable Chip Erase is selected, the Setup window is closed at the same time. With the new specifications, the Setup window is not closed at this time.

[Implementation]

Operating Precautions for PG-FP4-E

This item has been implemented in products with control code E (firmware: V1.30, GUI: V2.11) and later.

No. 23 Modification of [Upload...] menu specifications (3)

[Description]

The size of data that can be uploaded from the PG-FP4 has been changed from 1 MB to 2 MB.

[Implementation]

This item has been implemented in products with control code E (firmware: V1.31, GUI: V2.13) and later.

No. 24 Modification of default communication speed (modification of specification)

[Description]

The communication speed that is displayed when the communication port is determined in the Device Setup window has been changed from the lowest speed to the highest speed.

[Implementation]

This item has been implemented in products with control code E (firmware: V1.31, GUI: V2.13) and later.

No. 25 Addition of function to display Checksum command execution result on LCD

[Description]

The result of Device Checksum command execution in standalone mode is now displayed on the LCD.

[Implementation]

This item has been implemented in products with control code E (firmware: V1.31, GUI: V2.13) and later.

No. 26 Improvement in noise characteristics

[Description]

The noise characteristics (such as electrostatic and overvoltage) have been improved.

[Implementation]

This item has been implemented in products with control code E (firmware: V1.31, GUI: V2.13) and later.

No. 27 Deletion of READ command in standalone mode

[Description]

The READ command in standalone mode has been deleted.

[Implementation]

This item has been implemented in products with control code G (firmware: V1.32, GUI: V2.14) and later.

No. 28 Modification of LCD display for Option Setting menu in standalone mode

[Description]

All the contents of the Option Setting menu are now displayed by LCD even in standalone mode.

[Implementation]

This item has been implemented in products with control code G (firmware: V1.32, GUI: V2.14) and later.

No. 29 Addition of Progarea size display

[Description]

The size of the internal memory area that is currently usable is now displayed when Progarea is displayed in the communication log window.

[Implementation]

This item has been implemented in products with control code G (firmware: V1.32, GUI: V2.14) and later.

No. 30 Support of single-wire UART communication (78K0S/Kx1+)

[Description]

The device (78K0S/Kx1+) with the single-wire UART communication function is now supported. Short the target I/F signals CLK and FLMD0, and SI and SO in the program adapter (FA series) or the target.

Operating Precautions for PG-FP4-E

[Implementation]

The IIC/78K0S/KX1+ adapter has been included with products with control code G (firmware: V1.32, GUI: V2.14) and later.

No. 31 Addition of 9 MHz to clocks supplied from PG-FP4

[Description]

A 9 MHz clock has been added to clocks supplied from the PG-FP4.

[Implementation]

This item has been implemented in products with control code G (firmware: V1.33, GUI: V2.15) and later.

No. 32 Modification of percentage display when a verify error occurs in block mode with single-power-supply flash memory microcontroller

[Description]

When a verify error occurs in block mode with single-power-supply flash memory microcontroller, the final display percentage does not reach 100% depending on the device used. The specification has been modified so that a percentage indication of up to 100% is displayed.

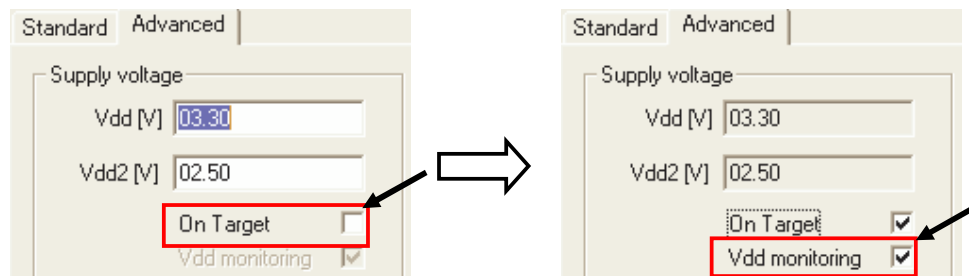
[Implementation]

This item has been implemented in products with control code G (firmware: V1.33, GUI: V2.15) and later.

No. 33 Addition of function for selecting enable/disable of power supply detection function at VDD pin

[Description]

A function for selecting enable or disable of the power supply detection function at the VDD pin, with the setting that VDD is supplied from the target system, has been added. This function has been added to the Advanced Setup menu that is selectable from [Setup...] under the [Device] menu. Select the "Vdd monitoring" check box to enable this function. Clear the "Vdd monitoring" check box to disable this function. The "Vdd monitoring" check box becomes selectable by selecting the "On Target" check box as shown below.



Caution When this function is disabled, the product can be used even if the VDD pin of the target system and that of the PG-FP4 are not connected, as long as the VDD generated in the target system and the VDD of the output signal generated by the PG-FP4 match.

[Implementation]

This item has been implemented in products with control code H (firmware: V1.34, GUI: V2.16) and later.

Operating Precautions for PG-FP4-E

No. 34 Modification of specification so as not to supply VDD2 when output voltage at VDD2 pin is set to 2.0 V or lower

[Description]

A voltage of 2.0 V or lower cannot be output from the VDD2 pin according to the PG-FP4 specifications. The specification has therefore been modified so as not to supply VDD2 from the PG-FP4 when a parameter file in which the output voltage at the VDD2 pin is set to 2.0 V or lower is loaded. At this time, CLK is not supplied from the PG-FP4 if the voltage level of the CLK is set to VDD2.

[Implementation]

This item has been implemented in products with control code H (firmware: V1.34, GUI: V2.16) and later.

No. 35 Modification of display of [Download] menu and [Upload] menu

[Description]

The notations of the [Download...] and [Upload...] menus that are selected from the menu bar have been changed.

“Download...” → “Download to FP4...”

“Upload...” → “Upload from FP4...”

[Implementation]

This item has been implemented in products with control code H (firmware: V1.34, GUI: V2.16) and later.

No. 36 Change of default settings of File Checksum

[Description]

In the Checksum dialog box that is opened from [Checksum...] in the [Eile] menu, the default setting of the memory area to be calculated has been changed from “Check Complete Programmer Application Memory” to “Device Area”.

[Implementation]

This item has been implemented in products with control code H (firmware: V1.34, GUI: V2.16) and later.

No. 37 Addition of specifications to cope with a limitation in μ PD70F3025A rank M

[Description]

Specifications have been modified to cope with a limitation that causes an internal verify error when using the μ PD70F3025A rank M (refer to ZBG-CC-05-0074).

[Implementation]

This item has been implemented in products with control code H (firmware: V1.35, GUI: V2.16) and later and parameter file 70F3025A PRM V1.05 and later.

No. 38 Support of devices with code flash and data flash areas

[Description]

Devices that have code flash and data flash areas, such as the V850ES/Fx3, are now supported. If chip erase is performed, entire blocks in the code flash and data flash areas are erased and the security functions are initialized.

In conjunction with the addition of this specification, specifications for the Upload command and HEX Editor function have been changed. Refer to Chapter (I) for details.

[Implementation]

This item has been implemented in products with control code H (firmware: V1.36, GUI: V2.17) and later.

Operating Precautions for PG-FP4-E

No. 39 Support of specifications in conjunction with support of 78K0R

[Description]

In conjunction with support of 78K0R microcontrollers, the selectable communication rates have been added to the [Speed] drop-down list in the [Target Device Connection] area on the Standard tab, and the [FS Block start] and [FS Block end] drop-down lists have been added to the [Security flag settings] on the Advanced tab, in the Device Setup dialog box. Refer to Chapter (I) for details.

[Implementation]

This item has been implemented in products with control code H (firmware: V1.36, GUI: V2.17) and later.

No. 40 Change of specification to conform the Read command Intel format

[Description]

The data record format has been changed from an extended address record to an extended linear address record so as to conform the Intel format employed by the Read command to that of the Upload command.

[Implementation]

This item has been implemented in products with control code H (firmware: V1.36, GUI: V2.17) and later.

No. 41 Change of Cancel button specification

[Description]

A specification for the function of the Cancel button on the PG-FP4 main unit has been changed. Previously, the Cancel button could abort any command; now it can abort only the Read command.

[Implementation]

This item has been implemented in products with control code H (firmware: V1.37, GUI: V2.18) and later.

No. 42 Change of specification for COM port selection

[Description]

A specification for COM ports has been changed. Previously, up to COM4 could be selected; now up to COM256 can be selected. In conjunction with this change, the display has been changed so as to show only the available COM ports.

[Implementation]

This item has been implemented in products with control code H (firmware: V1.37, GUI: V2.18) and later.

No. 43 Addition of function for checking program files size

[Description]

A function to display the warning message "WARNING: HEX file exceeds target device flash range" in the communication log window has been added. This message is displayed when a command such as Program, Verify, or Autoprocedure[EPV] is executed while the address range of a downloaded program file is out of the address range that has been set in the [Operation mode] area on the [Standard] tab in the Device Setup window.

[Implementation]

This issue has been implemented in products with control code H (firmware: V1.38, GUI: V2.19) and later.

No. 44 Addition of specification of UART communication at 500 kbps

[Description]

Specifications have been changed so that 500 kbps can now be selected as the baud rate of UART communication, even if a target device other than 78K0R microcontrollers is selected. Communication at 500 kbps is not available if this specification is not supported in the target device, though. For the baud rate supported in each target device, see the user's manual for the device or a supplementary document for the parameter files. If a 78K0R microcontroller is used as the target device, communication at 500 kbps is available with Programming GUI V2.16 and later.

[Implementation]

This issue has been implemented in products with control code H (firmware: V1.39, GUI: V2.20) and later.

(D) Cautions

No. 1 Operating clock of target microcontroller

It is recommended to supply the operating clock for the target microcontroller from the target system.

If the operating clock for the target microcontroller is output from the flash programmer, communication may not be performed normally because the output waveform is distorted due to the clock line routing of the target system. In such a case, insert a device such as the CMOS buffer in the target system to shape the waveform, if necessary.

No. 2 Caution on SIO-H/S communication mode (1)

When using the device shown below in SIO-H/S communication mode, use a **CPU clock of 2 MHz or higher**; otherwise a timeout error may occur when the Verify command is executed individually.

Affected devices: μ PD78F0034BY, μ PD78F0703Y, μ PD78F0988A, μ PD78F9478, μ PD78F9488, μ PD78F4218A, μ PD78F0354

No. 3 Caution on SIO-H/S communication mode (2)

Use the μ PD78F0078 in SIO-H/S communication mode under the following conditions.

- Use a **CPU clock of 2 MHz or higher**.
- Pull up the H/S pin. (Recommended pull-up resistor value: 4.7 k Ω)

No. 4 Caution on SIO communication mode

When the operating clock is supplied to the μ PD78F9468 from the flash programmer, **shape the waveform of the SCK pin using a circuit such as CMOS buffer**; otherwise communication may not be performed normally.

No. 5 Caution on connecting target cable

The target system and flash programmer may be damaged when they are connected in a system in which the voltage potential between the target GND and flash programmer GND differ. Therefore, set these GND to same voltage before connecting the target cable.

No. 6 Security flag settings in 78K0S/Kx1+

When a security flag setting is made in the Security flag settings menu in the 78K0S/Kx1+ and the [Security] command is executed, the flag is set to the target device but the setting is not valid unless VDD is turned off. To make the security flag settings valid, turn off VDD of the target system if VDD is supplied from the target system ("On Target" is selected in the Device Setup window).

(E) Table of Restrictions

No.	Restrictions	Issue Number															
		<1>	<2>	<3>	<4>	<5>	<6>	<7>	<8>	<9>	<10>	<11>	<12>	<13>	<14>	<15>	<16>
1	Bug in automatic signature selection	×	○	○	○	○	○	○	○	○	○	○	○	○	○	○	○
2	Bug in USB communication	×	○	○	○	○	○	○	○	○	○	○	○	○	○	○	○
3	Bug in baud rate during upload	×	○	○	○	○	○	○	○	○	○	○	○	○	○	○	○
4	Bug in Abort	×	○	○	○	○	○	○	○	○	○	○	○	○	○	○	○
5	Restriction on single-power-supply flash memory microcontroller	×	×	○	○	○	○	○	○	○	○	○	○	○	○	○	○
6	Bug in HEX Editor address display	○	×	○	○	○	○	○	○	○	○	○	○	○	○	○	○
7	Bug in [Signature] command display when using USB I/F	○	×	○	○	○	○	○	○	○	○	○	○	○	○	○	○
8	Bug in write processing	○	×	○	○	○	○	○	○	○	○	○	○	○	○	○	○
9	Bug in parallel I/F communication	○	×	×	○	○	○	○	○	○	○	○	○	○	○	○	○
10	Restriction on checksum command in two-power-supply flash memory microcontroller	×	×	×	○	○	○	○	○	○	○	○	○	○	○	○	○
11	Bug in communication port selection in single-power-supply flash memory microcontroller	×	×	×	○	○	○	○	○	○	○	○	○	○	○	○	○
12	Bug in display of device checksum command	×	×	×	○	○	○	○	○	○	○	○	○	○	○	○	○
13	Bug in upload	×	×	×	○	○	○	○	○	○	○	○	○	○	○	○	○
14	Bug in upgrading firmware	×	×	×	○	○	○	○	○	○	○	○	○	○	○	○	○
15	Restriction on security function of single-power-supply flash memory microcontroller	×	×	×	×	○	○	○	○	○	○	○	○	○	○	○	○
16	Bug in SIO-H/S communication mode	×	×	×	×	○	○	○	○	○	○	○	○	○	○	○	○
17	Bug in voltage output when power supply is turned on/off	×	×	×	×	○	○	○	○	○	○	○	○	○	○	○	○
18	Bug in setting checksum command in two-power-supply flash memory microcontroller	×	×	×	×	○	○	○	○	○	○	○	○	○	○	○	○
19	Bug in checksum command in two-power-supply flash memory microcontroller when operated in standalone mode	×	×	×	×	○	○	○	○	○	○	○	○	○	○	○	○
20	Bug in downloading Motorola S-format HEX file	×	×	×	×	×	○	○	○	○	○	○	○	○	○	○	○
21	The last address input for file upload differs from the one actually executed	×	×	×	×	×	×	○	○	○	○	○	○	○	○	○	○
22	Bug in Address display in Block/Area	×	×	×	×	×	×	○	○	○	○	○	○	○	○	○	○
23	Bug in execution of Update Firmware with USB 2.0	×	×	×	×	×	×	○	○	○	○	○	○	○	○	○	○

—: Not relevant, ×: Applicable, ○: Corrected

Operating Precautions for PG-FP4-E

No.	Restrictions	Issue Number															
		<1>	<2>	<3>	<4>	<5>	<6>	<7>	<8>	<9>	<10>	<11>	<12>	<13>	<14>	<15>	<16>
24	Bug in cancel operation in Security flag Setting confirmation dialog box	○	○	○	○	○	○	×	○	○	○	○	○	○	○	○	○
25	Bug in CLK output	○	○	○	○	○	○	×	○	○	○	○	○	○	○	○	○
26	Bug in address display in Boot block cluster setting	–	–	–	–	–	–	×	○	○	○	○	○	○	○	○	○
27	Communication cannot be performed after firmware upgrade	○	○	○	○	○	○	×	×	○	○	○	○	○	○	○	○
28	Bug in output from SO/TxD, RESET, SCK pins when VDD (VDD2) output is turned off	○	○	○	○	○	○	○	×	○	○	○	○	○	○	○	○
29	Bug in Read command when UART is used for USB communication	–	–	–	–	–	–	×	×	×	○	○	○	○	○	○	○
30	Bug related to power supply detection function at VDD pin	–	–	–	–	–	–	×	×	×	×	○	○	○	○	○	○
31	Bug in LCD display	×	×	×	×	×	×	×	×	×	×	○	○	○	○	○	○
32	File checksum command results in an error when downloading a HEX file	○	○	○	○	○	○	○	○	○	○	×	○	○	○	○	○
33	LED indicator does not glow red if execution of EPV command results in an error	×	×	×	×	×	×	×	×	×	×	×	○	○	○	○	○
34	Bug in saving Motorola S format file in HEX Editor	×	×	×	×	×	×	×	×	×	×	×	×	○	○	○	○
35	PG-FP4 hangs up under certain conditions during standalone mode	×	×	×	×	×	×	×	×	×	×	×	×	○	○	○	○

–: Not relevant, ×: Applicable, ○: Corrected

(F) Description of Restrictions

No. 1 Limitation in automatic signature selection

[Description]

When multiple signature information is stored in a parameter file, the valid signature cannot be selected automatically.

[Workaround]

Be sure to use the released parameter file that supports the target microcontroller.

[Correction]

This issue has been corrected in products with control code C (firmware: V1.17, GUI: V2.00) and later.

No. 2 Limitation in USB communication

[Description]

USB communication with the host cannot be performed in Windows 98 and Windows Me.

[Workaround]

Use the serial interface (RS-232C) when using Windows 98 or Windows Me. To use USB communication, use Windows 2000.

In addition, use the serial interface (RS-232C) when updating firmware data in the PG-FP4. Firmware data cannot be updated via USB communication.

[Correction]

This issue has been corrected in products with control code C (firmware: V1.17, GUI: V2.00) and later.

No. 3 Limitation in baud rate during upload

[Description]

When serial communication is used with a baud rate of 38,400 bps or higher in the Upload menu (File → Upload), the message "E 502 Programmer is not responding" is displayed and the upload may not be performed correctly.

[Workaround]

There is no workaround. Use serial communication with a baud rate of 19,200 bps or less.

[Correction]

This issue has been corrected in products with control code C (firmware: V1.17, GUI: V2.00) and later.

No. 4 Limitation in Abort

[Description]

Even if "Abort" is executed after a command for the target microcontroller is executed, the Abort is not executed and the command processing is executed instead.

[Workaround]

There is no workaround. Do not use "Abort".

[Correction]

This issue has been corrected in products with control code C (firmware: V1.17, GUI: V2.00) and later.

No. 5 Restriction on single-power-supply flash memory microcontroller

[Description]

If a communication port other than SIO is used in the single-power-supply flash memory microcontroller, communication may not be performed depending on the target clock frequency.

Moreover, the following functions cannot be used regardless of the communication port.

- Checksum after Program

[Workaround]

Use the SIO communication port.

[Correction]

This issue has been corrected in products with control code C (firmware: V1.18, GUI: V2.02) and later.

No. 6 Limitation in HEX Editor address display

[Description]

When a Motorola-SRC format file is loaded, the end address displayed in the application software is the address incremented by one. This Limitation is just a problem of address display; there is no problem in the loaded data.

[Workaround]

There is no workaround.

[Correction]

This issue has been corrected in products with control code C (firmware: V1.18, GUI: V2.02) and later.

No. 7 Limitation in [Signature] command display when using USB I/F

[Description]

If the [Signature] command is executed when using the USB I/F, the following message will be output.

- Power failure detected!
- No Device connected.

This limitation is just a problem of display in the application software; there is no operational problem.

[Workaround]

There is no workaround.

[Correction]

This issue has been corrected in products with control code C (firmware: V1.18, GUI: V2.02) and later.

No. 8 Limitation in write processing

[Description]

When the PROGRAM command is executed in the μ PD78F4046, PROGRAM processing is repeated unnecessarily.

[Workaround]

There is no workaround.

There is no problem in terms of product quality in a device in which this processing occurs.

[Correction]

This issue has been corrected in products with control code C (firmware: V1.18, GUI: V2.02) and later.

No. 9 Limitation in parallel I/F communication

[Description]

Correct communication cannot be performed via the parallel I/F (dedicated to download).

[Workaround]

There is no workaround. Use the serial I/F (RS-232C) or USB.

[Correction]

This issue has been corrected in products with control code C (firmware: V1.19, GUI: V2.04) and later.

Operating Precautions for PG-FP4-E

No. 10 Restriction on checksum command in two-power-supply flash memory microcontroller

[Description]

The checksum command is not supported in the two-power-supply flash memory microcontroller. Therefore, the checksum command cannot be executed.

[Workaround]

There is no workaround.

[Correction]

This issue has been corrected in products with control code C (firmware: V1.19, GUI: V2.04) and later.

No. 11 Limitation in communication port selection in single-power-supply flash memory microcontroller

[Description]

When using the single-power-supply flash memory microcontroller (except V850ES/SA2 and V850ES/SA3), the communication port selection menu of the GUI is displayed as a blank, so the relevant port cannot be selected.

[Workaround]

There is no workaround.

[Correction]

This issue has been corrected in products with control code C (firmware: V1.19, GUI: V2.04) and later.

No. 12 Limitation in display of device checksum command

[Description]

The result of the first device checksum command immediately after power-on or a reset cannot be displayed correctly.

[Workaround]

The result is displayed correctly from the second and later device checksum command.

[Correction]

This issue has been corrected in products with control code C (firmware: V1.19, GUI: V2.04) and later.

No. 13 Limitation in upload

[Description]

If the size of a file to be uploaded is FFDh or larger, a symbol ">" is appended at the end of the file when it is saved.

[Workaround]

There is no workaround.

[Correction]

This issue has been corrected in products with control code C (firmware: V1.19, GUI: V2.04) and later.

No. 14 Limitation in upgrading firmware

[Description]

When the firmware is upgraded to V1.19 or later using programming GUI V2.02 or earlier, the firmware cannot be upgraded correctly, and after that, cannot be activated.

[Workaround]

Upgrade firmware using programming GUI V2.04 or later.

[Correction]

This issue has been corrected in products with control code C (firmware: V1.19, GUI: V2.04) and later.

Operating Precautions for PG-FP4-E

No. 15 Restriction on security function of single-power-supply flash memory microcontroller

[Description]

The security function of the single-power-supply flash memory microcontroller is not supported. This function is not activated even if the check box is selected in [Security flag after Program] on the GUI.

[Workaround]

There is no workaround.

[Correction]

This issue has been corrected in products with control code E (firmware: V1.21, GUI: V2.05) and later.

No. 16 Limitation in SIO-H/S communication mode

[Description]

SIO-H/S communication mode cannot be used in the following devices.

μ PD78F9478, μ PD78F9488, μ PD78F0078, μ PD78F0703Y, μ PD78F0828B, μ PD78F4216A, μ PD78F4218A, μ PD78F4225, μ PD78F4976A, μ PD78F4938A, μ PD78F4967, μ PD78F0988A, μ PD78F0034B

[Workaround]

Use other than SIO-H/S communication mode when using the above devices.

[Correction]

This limitation can be avoided by using products with control code E (firmware: V1.21, GUI: V2.05) or later in combination with the latest parameter file.

No. 17 Limitation in voltage output when power supply is turned on/off

[Description]

When the power supply is turned on/off, approximately 7 V of voltage is output from VPP, VDD, or VDD2.

[Workaround]

Remove the PG-FP4 taking care that the target is not affected by power supply turn-on/off.

[Correction]

This issue has been corrected in products with control code E (firmware: V1.21, GUI: V2.05) and later.

No. 18 Limitation in setting checksum command in two-power-supply flash memory microcontroller

[Description]

The device Checksum command is not executed after the Program command even if the "Checksum after program" option is set on the programming GUI.

[Workaround]

There is no workaround.

Execute the device Checksum command independently after the Program command.

[Correction]

This issue has been corrected in products with control code E (firmware: V1.21, GUI: V2.05) and later.

No. 19 Limitation in checksum command in two-power-supply flash memory microcontroller when operated in standalone mode

[Description]

The checksum command is not displayed in the Commands menu when the PG-FP4 is operated in the standalone mode.

[Workaround]

Execute the checksum command from the programming GUI.

[Correction]

This issue has been corrected in products with control code E (firmware: V1.21, GUI: V2.05) and later.

Operating Precautions for PG-FP4-E

No. 20 Limitation in downloading Motorola S-format HEX file

[Description]

When the HEX file downloaded to the PG-FP4 satisfies both the following conditions, the last data byte of the data record will not be downloaded (at this time, the data becomes the initial value FFh).

Condition 1: The file is a Motorola S-format file and its data record format is S2 or S3

Condition 2: The last data byte of the data record is an even address

Example: In the case of the data record line S20503FFFC52AA shown below, the data record format is S2 and the last data byte is 52h.

Therefore, data 52h is not downloaded and becomes FFh (initial value).

In the case of data record line S20503FFFC52AA

	Record format	Byte count	Load address	Data byte	Checksum
Data record	S2	05	03FFFC	52	AA

This limitation does not occur when downloading an Intel HEX type file.

[Workaround]

There is no workaround.

[Correction]

This issue has been corrected in products with control code E (firmware: V1.23, GUI: V2.05) and later.

No. 21 The last address input for file upload differs from the one actually executed

[Description]

The last address from which data is uploaded is decremented by one from the input address.

[Workaround]

Increment the address input as the last address by one.

[Correction]

This issue has been corrected in products with control code E (firmware: V1.30, GUI: V2.11) and later.

No. 22 Limitation in Address display in Block/Area

[Description]

The Address indication in the Block/Area area of the programmer parameter window is not shown if the start block or area is set to 1 when using block mode or area mode.

[Workaround]

There is no workaround.

[Correction]

This issue has been corrected in products with control code E (firmware: V1.30, GUI: V2.11) and later.

No. 23 Limitation in execution of Update Firmware with USB 2.0

[Description]

An error message "E316 Trying to connect Programmer failed." is displayed when Update Firmware is executed with USB 2.0. However, updating completes normally.

[Workaround]

When this limitation occurs, restart the flash programmer and programming GUI.

[Correction]

This issue has been corrected in products with control code E (firmware: V1.31, GUI: V2.13) and later.

No. 24 Limitation in cancel operation in Security flag Setting confirmation dialog box

[Description]

When the [Cancel] button is selected in the dialog box that appears when "Disable Chip Erase" or "Disable Boot block cluster reprogramming" is selected and then the [OK] button is clicked in the Setup window, there security flag setting remains selected.

Operating Precautions for PG-FP4-E

[Workaround]

Clear the “Security flag Setting” check boxes and click the [OK] button in the Setup window.

[Correction]

This issue has been corrected in products with control code E (firmware: V1.31, GUI: V2.13) and later.

No. 25 Limitation in CLK output

[Description]

CLK is output from the PG-FP4 even if the “On Target” check box is selected in the Supply oscillator area in the Device Setup window.

[Workaround]

There is no workaround.

[Correction]

This issue has been corrected in products with control code E (firmware: V1.31, GUI: V2.13) and later.

No. 26 Limitation in address display in Boot block cluster setting

[Description]

The address display is not shown correctly if the “Show Address” check box is selected when selecting the boot block in the Boot block cluster setting menu.

[Workaround]

Use the BlockNumber display.

[Correction]

This issue has been corrected in products with control code E (firmware: V1.31, GUI: V2.13) and later.

No. 27 Communication cannot be performed after firmware upgrade

[Description]

It is not possible to reboot the PG-FP4 normally after firmware is upgraded from V1.23 or earlier to V1.30 or V1.31 and the PG-FP4 can no longer communicate with the target.

[Workaround]

Re-apply power to the PG-FP4 or execute [Programmer] → [Reset] after firmware upgrade.

[Correction]

This issue has been corrected in products with control code G (firmware: V1.32, GUI: V2.14) and later.

No. 28 Limitation in output from SO/TxD, RESET, SCK pins after VDD (VDD2) output is turned off

[Description]

A pull-up resistor for the target interface (SO/TxD, RESET, SCK) was not disconnected for approximately 30 ms after VDD (VDD2) output is turned off, so VDD (VDD2) pulled up by the SO/TxD, RESET, and SCK pins is output during this period.

[Workaround]

There is no workaround.

[Correction]

This issue has been corrected in products with control code G (firmware: V1.32, GUI: V2.14) and later.

No. 29 Limitation in Read command when UART is used for USB communication

[Description]

A communication error occurs if the Read command is executed when the host interface is USB and communication is performed with the target via UART.

[Workaround]

Use a serial interface as the host interface when executing the Read command via UART.

[Correction]

This issue has been corrected in products with control code G (firmware: V1.33, GUI: V2.15) and later.

Operating Precautions for PG-FP4-E

No. 30 Limitation related to power supply detection function at VDD pin

[Description]

When on-board programming is performed using a parameter file that supports multiple signatures, with the setting that VDD is supplied from the PG-FP4, the error message "Target power detected!" is displayed in the communication log window and the writing may not be completed.

[Workaround]

Supply power from the target system.

[Correction]

This issue has been corrected in products with control code H (firmware: V1.34, GUI: V2.16) and later.

No. 31 Limitation in LCD display

[Description]

When dots (".") are displayed in the LCD display with a command such as the Erase command and the execution then moves to the next command, the LCD display may become garbled. The command itself, however, operates normally.

[Workaround]

Re-apply power to the PG-FP4 after confirming the completion of the command, or execute the Reset command from the [Programmer] menu.

[Correction]

This issue has been corrected in products with control code H (firmware: V1.34, GUI: V2.16) and later.

No. 32 File checksum command results in an error when downloading a HEX file

[Description]

When a HEX file is downloaded, the last character "1Ah (^Z)" of the file is executed as the next command. Consequently, a file checksum command, which is executed after downloading of the file is completed, may result in an error (Command not found). There will be no problem if the execution ends normally without causing errors.

[Workaround]

Implement either of the following workarounds.

- (1) Split the program area into two areas.
- (2) Delete "1Ah (^Z)" at the end of the HEX file using, an editor or the like.

[Correction]

This issue has been corrected in products with control code H (firmware: V1.35, GUI: V2.16) and later.

No. 33 LED indicator does not glow red if execution of EPV command results in an error

[Description]

If execution of the EPV command results in an error, the LED indicator does not glow red to red, but is off.

[Workaround]

There is no workaround.

[Correction]

This issue has been corrected in products with control code H (firmware: V1.35, GUI: V2.16) and later.

No. 34 Limitation in saving Motorola S format file in HEX Editor

[Description]

When saving a file in the Motorola S format in the HEX Editor, and the file name or folder name includes a character other than ASCII code 0x00 to 0x7F, the header of the Motorola S file becomes invalid.

[Workaround]

There is no workaround.

[Correction]

This issue has been corrected in products with control code H (firmware: V1.36, GUI: V2.17) and later.

Operating Precautions for PG-FP4-E

No. 35 PG-FP4 hangs up under certain conditions during standalone mode

[Description]

The PG-FP4 hangs up if commands are continuously executed using control buttons on the PG-FP4 with the PG-FP4 connected to the host PC using a USB cable but without the programming GUI being started.

[Workaround]

Unplug the USB cable before operating the control buttons.

[Correction]

This issue has been corrected in products with control code H (firmware: V1.36, GUI: V2.17) and later.

(G) Table of Operating Precautions (Documentation)

No.	Outline	U15260EEnV0UM00	PG-FP4-E					
			Feb. 2002	Jan. 2003	Sep. 2004			
1	Extension connector signal level		X	✓	✓			
2	User's Manual does not reflect GUI version V2.05 modifications and extensions.		X	✓	✓			
3	New error message F 809		-	X	✓			
4	Input signals in remote control mode are active high.		X	X	✓			
5	Download site for PRM files		X	X	✓			
6	User's Manual does not reflect GUI version V2.12 modifications and extensions.		-	X	✓			
7	Wrong Target Interface description.		-	X	✓			
8	Wrong Connector pinout description.		-	X	✓			
9	User's Manual does not reflect GUI versions V2.17 (and later) modifications and extensions.		-	X	X			

X : Applicable
 ✓ : Not applicable
 - : Not checked

(H) Description of Operating Precautions (Documentation)

No. 1	<p>Extension connector signal level</p> <p><u>Details</u></p> <p>On page 84, Table 6-1, <i>Start EPV 0 / Start EPV 1</i> signals are marked as active low. Correct is that <i>Start EPV 0 / Start EPV 1</i> are active high.</p> <p>Text below table 6-1, page 84, should be:</p> <p>The signals in remote control mode are active high.</p> <p>Text below table 9-6, page 116, should be:</p> <p>The D-SUB 25 host connector is provided by Provertha. The signals in remote control mode are active high.</p>
No. 2	<p>User's Manual does not reflect GUI version V2.05 modifications and extensions.</p> <p><u>Details</u></p> <p>The User's Manual U15260EE1V0UM00, published February 2002, describes the GUI version V2.01.</p> <p><u>Workaround</u></p> <p>On-line Help describes GUI version V2.05.</p>
No. 3	<p>New Error Message F 809</p> <p><u>Details</u></p> <p>If Hex editor is requested to open a file with end address greater or equal 4MB, error message</p> <p style="text-align: center;"><i>F 809 Too large address. edit range: 0 - 0x400000</i></p> <p>is displayed.</p>
No. 4	<p>Input signals in remote control mode are active high.</p> <p><u>Details</u></p> <p>Text on page 124 says that the input signals in remote control mode are active low.</p> <p>Correct is that the input signals in remote control mode are active high.</p>

Operating Precautions for PG-FP4-E

No. 5	Download site for PRM files
	<p><u>Details</u></p> <p>Page 19 (and other locations) describe the download site for PRM file(s). A better place to look for PRM files is at</p> <p>http://www.eu.necel.com/update, Section PG-FP4-E.</p>
No. 6	User's Manual does not reflect GUI version V2.12 modifications and extensions.
	<p><u>Details</u></p> <p>The User's Manual U15260EE2V0UM00, published January 2003, describes the GUI version V2.05.</p> <p><u>Workaround</u></p> <p>On-line Help describes GUI version V2.12.</p>
No. 7	Wrong Target Interface description.
	<p><u>Details</u></p> <p>Figure 11-3 in chapter 11.2 shows a 100k Pullup to +5V attached to the buffer inputs. This is not correct.</p> <p>Instead, a 100k Pulldown to GND is mounted.</p>
No. 8	Wrong Connector pinout description.
	<p><u>Details</u></p> <p>Figure 9-9 in chapter 9.5 is not correct. Pin 6 is shown as pin 10 and vice versa. In other words, pin 6 is near pin 1, and pin 10 is near pin 5.</p>
No. 9	User's Manual does not reflect GUI version V2.17 (and later) modifications and extensions.
	<p><u>Details</u></p> <p>The User's Manual U15260EE3V0UM00, published September 2004, describes the GUI version V2.14 – V2.16.</p> <p><u>Workaround</u></p> <p>The new features in GUI V2.17 (and later) are described below.</p>

(I) Description of new features in GUI version 2.17 and later

Devices that have code flash and data flash areas are supported in products with control code H (firmware: V1.36, GUI: V2.17) or later. In conjunction with this addition, the following specifications have been changed.

(1) Programmer parameter window layout

GUI V2.16

Device	
Name:	70F3734
Status:	autoconnected
Parameter file	
Name:	70F3734.PRM
Version:	V1.01
Device Setting file	
Name:	70F3734.SET
Date:	Wed Jul 12 13:58:40
Download file	
Name:	sample.hex
Date:	Fri Feb 24 21:13:08 2006
Chksum:	E8D93F41
Prog Area:	0
Connection to device	
Port:	UART-ch0
Pulse Num:	0
Speed:	153 600 bps
Vdd:	05.00 V (FP4)
Supply	
Freq.:	20 000 000 Hz (Target)
Multiply:	1.00
Block/Area	
Range:
Address:
File Checksum	
Type:
Address:
Value:

GUI V2.17

Device	
Name:	70F3734
Status:	autoconnected
Parameter file	
Name:	70F3734.PRM
Version:	V1.01
Device Setting file	
Name:	70F3734.SET
Date:	Wed Jul 12 13:58:40
Download file	
Name:	sample.hex
Date:	Fri Feb 24 21:13:08 2006
Chksum:	E8D93F41
Prog Area:	0
Connection to device	
Port:	UART-ch0
Pulse Num:	0
Speed:	153 600 bps
Vdd:	05.00 V (FP4)
Supply	
Freq.:	20 000 000 Hz (Target)
Multiply:	1.00
Operation range	
Mode:	Chip
Range:
Range:
File Checksum	
Type:
Address:
Value:

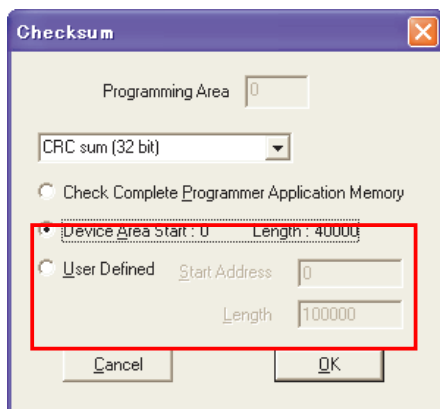
(2) Operation range display area

Mode	Devices Not Supporting Data Flash	Devices Supporting Data Flash
Chip	<div>Operation range</div> <div>Mode: Chip</div> <div>Range:</div> <div>Range:</div>	<div>Operation range</div> <div>Mode: Chip</div> <div>Range:</div> <div>Range:</div>
Block	<div>Operation range</div> <div>Mode: Block</div> <div>Range: Block 0 - 1</div> <div>Range:</div>	<div>Operation range</div> <div>Mode: Block</div> <div>Range: Code BL 0 - 127</div> <div>Range: Data BL 0 - 15</div>
Block Address	<div>Operation range</div> <div>Mode: Block</div> <div>Range: Address 000000 - 07FFFF</div> <div>Range:</div>	<div>Operation range</div> <div>Mode: Block</div> <div>Range: Code AD 000000 - 07FFFF</div> <div>Range: Data AD 400000 - 407FFF</div>

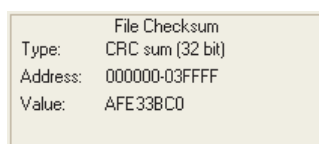
(3) [Checksum] menu specifications

When [Checksum] in the [File] menu is executed, the window display varies depending on whether or not the downloaded parameter file supports the data flash area.

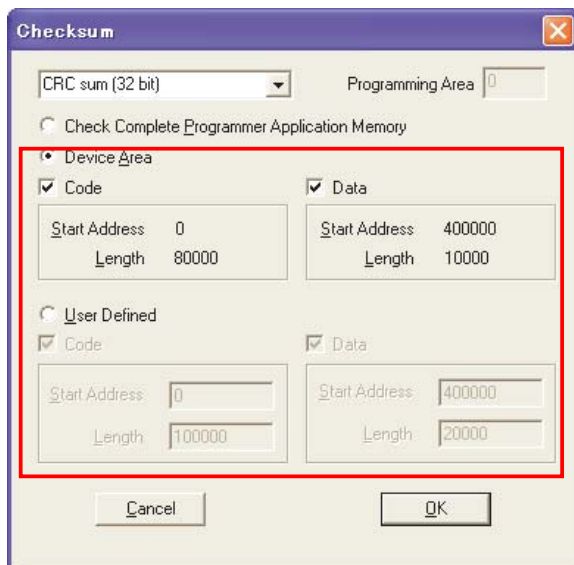
<When a parameter file that does not support the data flash area is downloaded>



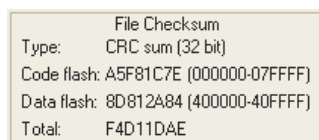
After clicking the OK button, the following information will be displayed in the File Checksum area of the programmer parameter window.



<When a parameter file that supports the data flash area is downloaded>



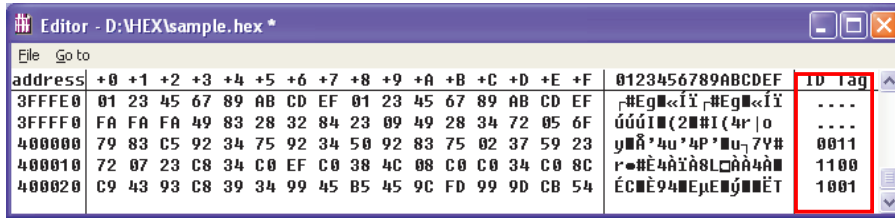
After clicking the OK button, the following information will be displayed in the File Checksum area of the programmer parameter window.



Operating Precautions for PG-FP4-E

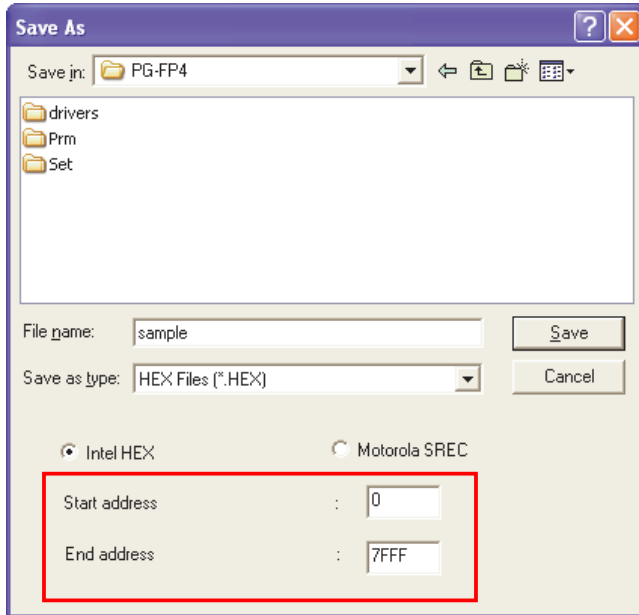
(4) [HEX Editor] menu specifications

An ID Tag row has been added to the [HEX Editor] in the [File] menu. The ID Tag row is used in microcontrollers that support the data flash area. Only the values at addresses 400000h and beyond can be edited in the ID Tag row.



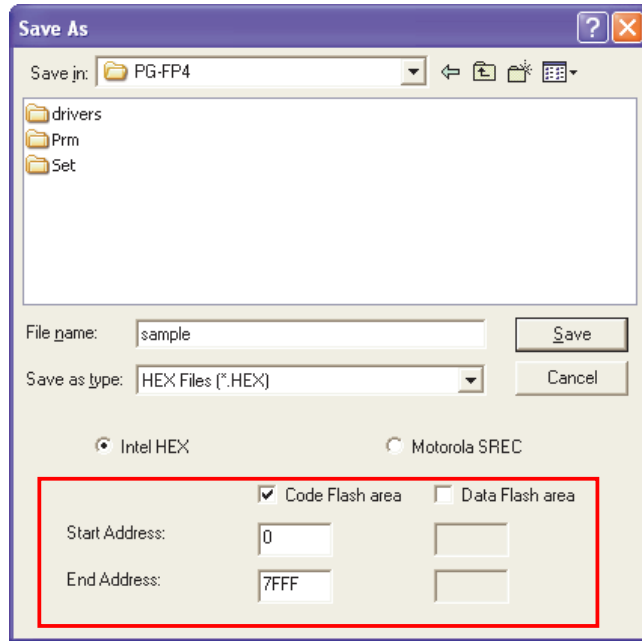
When a parameter file is downloaded using the [HEX Editor] and the file is saved as, the available options in the [Save As] window vary depending on whether or not the downloaded file supports the data flash area.

<When a parameter file that does not support the data flash area is downloaded>



Operating Precautions for PG-FP4-E

<When a parameter file that supports the data flash area is downloaded>



Supplement Data is stored into the data flash area as follows.

<Editor>

address	+0	+1	+2	+3	+4	+5	+6	+7	+8	+9	+A	+B	+C	+D	+E	+F	ID Tag
400000	00	11	22	33	44	55	66	77	88	99	AA	BB	CC	DD	EE	FF	1 1 0 0

<Program file saved>

address	Data Flash				ID Tag				Data Flash				ID Tag			
400000h	00	11	22	33	FF	FF	FF	FF	44	55	66	77	FF	FF	FF	FF
400001h	88	99	AA	BB	00	00	00	00	CC	DD	EE	FF	00	00	00	00

Operating Precautions for PG-FP4-E

(5) Specifications for Standard tab in Device Setup window

The available options on the Standard tab in the Device Setup window vary depending on whether or not the downloaded file supports the data flash area.

<When a parameter file that does not support the data flash area is downloaded>

The screenshot shows the 'Properties' dialog box with the 'Standard' tab selected. The 'Device' section shows 'Setting file' as 'C:\PROGRAM FILES\NECTOOLS32\PG-FP4\SET' and 'Parameter file' as '70F3734.PRM'. The 'Communication interface to device' section shows 'Port' as 'UART-ch0', 'Pulse number' as '0', 'Speed' as '153600Baud', and 'IIC Address' as '00'. The 'Supply oscillator' section shows 'Frequency' as '20000000', 'On Target [Hz]' checked, 'Multiply rate' as 'Internal/Direct mode', and 'PLL mode' as '4.00'. The 'Operation Mode' section is highlighted with a red box and shows 'Chip' selected, 'Block' selected with 'Start' as '0' and 'End' as '1', and 'Area' selected with 'Start' as '000000' and 'End' as '000FFF'. The 'Show Address' checkbox is unchecked. The 'Selective Programming/Verify/Read' checkbox is also unchecked. The 'OK', 'Cancel', and 'Apply' buttons are at the bottom.

<When a parameter file that supports the data flash area is downloaded>

The screenshot shows the 'Properties' dialog box with the 'Standard' tab selected. The 'Device' section shows 'Setting file' as 'C:\PROGRAM FILES\NECTOOLS32\PG-FP4\SET' and 'Parameter file' as '70F3380.PRM'. The 'Communication interface to device' section shows 'Port' as 'UART-ch0', 'Pulse number' as '0', 'Speed' as '153600Baud', and 'IIC Address' as '00'. The 'Supply oscillator' section shows 'Frequency' as '6000000', 'On Target [Hz]' checked, 'Multiply rate' as 'Internal/Direct mode', and 'PLL mode' as '8.00'. The 'Operation Mode' section is highlighted with a red box and shows 'Chip' selected, 'Block' selected with 'Start' and 'End' fields, 'Area' selected with 'Start' and 'End' fields, and 'Show Address' checkbox unchecked. The 'Code flash' and 'Data flash' checkboxes are both checked. The 'Selective Programming/Verify/Read' checkbox is also unchecked. The 'OK', 'Cancel', and 'Apply' buttons are at the bottom.

(6) [Upload from FP4] menu specifications

The available options in the “Select Filename for upload” window vary depending on whether or not the downloaded file supports the data flash area.

<When a parameter file that does not support the data flash area is downloaded>

<When a parameter file that supports the data flash area is downloaded>

Caution Specify twice the required for the data range in order to accommodate the ID tag data.
Example: When uploading 16 bytes of data flash data from address 400000, specify 32 bytes.

Start: 400000 End: 40001F

<Program file saved>

address	Data Flash				ID Tag				Data Flash				ID Tag			
40000xh	00	11	22	33	FF	FF	FF	FF	44	55	66	77	FF	FF	FF	FF
40001xh	88	99	AA	BB	00	00	00	00	CC	DD	EE	FF	00	00	00	00

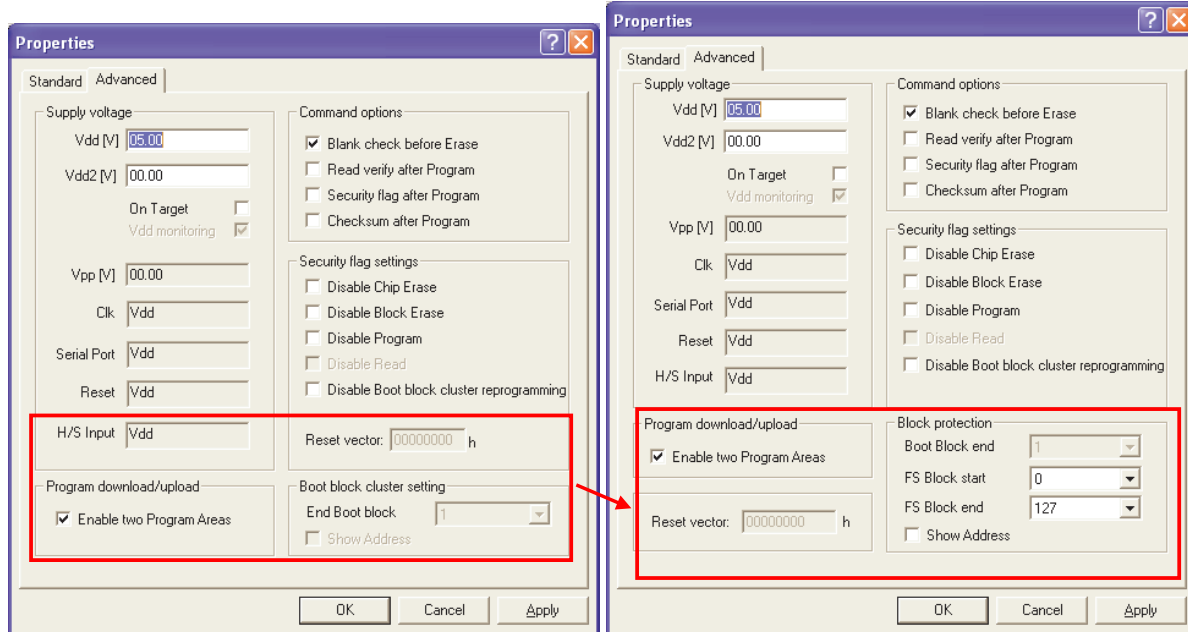
(7) [Setup] menu specifications for 78K0R

The 78K0R microcontrollers are supported in products with control code H (firmware: V1.36, GUI: V2.17) or later. In conjunction with this addition, the following boot block settings have been added.

Layout of Advanced tab in Device Setup window

GUI V2.16

GUI V2.17 and later



[Reset vector] text box

When the [Security] command is executed with an arbitrary address value specified in this text box, the reset vector will be changed to the specified address. This setting is cleared when the [Erase] command is executed with the "Chip" option specified in the Operation Mode area on the Standard tab. The initial value is 00000000h.

[Boot Block end] drop-down list

Specify the block number from this list. This box shows the block numbers configured by the target device.

[FS Block start] and [FS Block end] drop-down lists

Specify the block numbers from these lists. The boot protection function is a function used to prevent the areas out of the specified range from being written to during flash memory self programming by mistake. These lists show the block numbers configured by the target device.

(J) Revision History

Item	Date published	Document No.	Comments
1	22-03-2002	EEDT-OP-0002-13	First release.
2	26-03-2002	EEDT-OP-0002-14	Section A, item 14 removed Section F, item 1 added
3	24-09-2002	EEDT-OP-0002-15	Section A / D, item 16 added Section B / E, item 2 added Section C / F, item 2 added
4	25-02-2003	EEDT-OP-0002-16	Re-numbering of items in section A / D Section A / D, item 7 and 8 added Section B / E, item 3 added
5	25-04-2003	EEDT-OP-0002-17	Re-numbering of items in section A / D Section A / D, item 19 added Section C / F, item 3 added
6	22-08-2003	EEDT-OP-0002-18	Section A / D, item 20 added Section A / B, Control Code 'F' added Section C / F, items 4, 5 added
7	15-03-2004	EEDT-OP-0002-19	Section A, add column for latest GUI and firmware Section A / D, item 21 added Section C / F, item 6 added
8	20-04-2004	EEDT-OP-0002-20	Section C / F, item 7 added
9	22-04-2004	EEDT-OP-0002-21	Section B / E, item 4 added
10	28-04-2004	EEDT-OP-0002-22	Section A / D, item 22 added
11	30-04-2004	EEDT-OP-0002-23	Section C / F, item 8 added
12	19-07-2004	EEDT-OP-0002-24	Section B / E, item 5 added
13	31-08-2004	EEDT-OP-0002-25	Corrected Table B, item 5
14	20-09-2004	EEDT-OP-0002-26	Updated section A, last column (versions). Section C, added column for new users manual. Added a note in section E, item 5.
15	24-02-2005	EEDT-OP-0002-27	Table A, added a note for later GUI and firmware versions than listed.
16	06-05-2005	EEDT-OP-0002-28	Table A, added a column for latest GUI and firmware. Removed column for Control code A.
17	27-10-2005	EEDT-OP-0002-29	Section A / D, item 23 added Table A,B, Control Code 'H' added
18	02-03-2006	EEDT-OP-0002-30	Table A, added a column for latest GUI and firmware. Removed column for GUI V2.00.
19	11-08-2006	EEDT-OP-0002-31 U18071EE3V1IF00	New global document number has been assigned Added Japanese precautions to this document Format has changed slightly
20	26-06-2007	U18071EE3V2IF00	Modified document for GUI V2.18 and firmware V1.37. The table of Operating Precautions has been splitted in two tables: 'Addition and Changes of Specifications' and 'Restrictions'
21	08-10-2007	U18071EE3V3IF00	Modified document for GUI V2.19 and firmware V1.38.
22	15-04-2008	U18071EE3V4IF00	Modified document for GUI V2.20 and firmware V1.39.