

To our customers,

---

## Old Company Name in Catalogs and Other Documents

---

On April 1<sup>st</sup>, 2010, NEC Electronics Corporation merged with Renesas Technology Corporation, and Renesas Electronics Corporation took over all the business of both companies. Therefore, although the old company name remains in this document, it is a valid Renesas Electronics document. We appreciate your understanding.

Renesas Electronics website: <http://www.renesas.com>

April 1<sup>st</sup>, 2010  
Renesas Electronics Corporation

Issued by: Renesas Electronics Corporation (<http://www.renesas.com>)

Send any inquiries to <http://www.renesas.com/inquiry>.

## Notice

1. All information included in this document is current as of the date this document is issued. Such information, however, is subject to change without any prior notice. Before purchasing or using any Renesas Electronics products listed herein, please confirm the latest product information with a Renesas Electronics sales office. Also, please pay regular and careful attention to additional and different information to be disclosed by Renesas Electronics such as that disclosed through our website.
2. Renesas Electronics does not assume any liability for infringement of patents, copyrights, or other intellectual property rights of third parties by or arising from the use of Renesas Electronics products or technical information described in this document. No license, express, implied or otherwise, is granted hereby under any patents, copyrights or other intellectual property rights of Renesas Electronics or others.
3. You should not alter, modify, copy, or otherwise misappropriate any Renesas Electronics product, whether in whole or in part.
4. Descriptions of circuits, software and other related information in this document are provided only to illustrate the operation of semiconductor products and application examples. You are fully responsible for the incorporation of these circuits, software, and information in the design of your equipment. Renesas Electronics assumes no responsibility for any losses incurred by you or third parties arising from the use of these circuits, software, or information.
5. When exporting the products or technology described in this document, you should comply with the applicable export control laws and regulations and follow the procedures required by such laws and regulations. You should not use Renesas Electronics products or the technology described in this document for any purpose relating to military applications or use by the military, including but not limited to the development of weapons of mass destruction. Renesas Electronics products and technology may not be used for or incorporated into any products or systems whose manufacture, use, or sale is prohibited under any applicable domestic or foreign laws or regulations.
6. Renesas Electronics has used reasonable care in preparing the information included in this document, but Renesas Electronics does not warrant that such information is error free. Renesas Electronics assumes no liability whatsoever for any damages incurred by you resulting from errors in or omissions from the information included herein.
7. Renesas Electronics products are classified according to the following three quality grades: “Standard”, “High Quality”, and “Specific”. The recommended applications for each Renesas Electronics product depends on the product’s quality grade, as indicated below. You must check the quality grade of each Renesas Electronics product before using it in a particular application. You may not use any Renesas Electronics product for any application categorized as “Specific” without the prior written consent of Renesas Electronics. Further, you may not use any Renesas Electronics product for any application for which it is not intended without the prior written consent of Renesas Electronics. Renesas Electronics shall not be in any way liable for any damages or losses incurred by you or third parties arising from the use of any Renesas Electronics product for an application categorized as “Specific” or for which the product is not intended where you have failed to obtain the prior written consent of Renesas Electronics. The quality grade of each Renesas Electronics product is “Standard” unless otherwise expressly specified in a Renesas Electronics data sheets or data books, etc.
  - “Standard”: Computers; office equipment; communications equipment; test and measurement equipment; audio and visual equipment; home electronic appliances; machine tools; personal electronic equipment; and industrial robots.
  - “High Quality”: Transportation equipment (automobiles, trains, ships, etc.); traffic control systems; anti-disaster systems; anti-crime systems; safety equipment; and medical equipment not specifically designed for life support.
  - “Specific”: Aircraft; aerospace equipment; submersible repeaters; nuclear reactor control systems; medical equipment or systems for life support (e.g. artificial life support devices or systems), surgical implantations, or healthcare intervention (e.g. excision, etc.), and any other applications or purposes that pose a direct threat to human life.
8. You should use the Renesas Electronics products described in this document within the range specified by Renesas Electronics, especially with respect to the maximum rating, operating supply voltage range, movement power voltage range, heat radiation characteristics, installation and other product characteristics. Renesas Electronics shall have no liability for malfunctions or damages arising out of the use of Renesas Electronics products beyond such specified ranges.
9. Although Renesas Electronics endeavors to improve the quality and reliability of its products, semiconductor products have specific characteristics such as the occurrence of failure at a certain rate and malfunctions under certain use conditions. Further, Renesas Electronics products are not subject to radiation resistance design. Please be sure to implement safety measures to guard them against the possibility of physical injury, and injury or damage caused by fire in the event of the failure of a Renesas Electronics product, such as safety design for hardware and software including but not limited to redundancy, fire control and malfunction prevention, appropriate treatment for aging degradation or any other appropriate measures. Because the evaluation of microcomputer software alone is very difficult, please evaluate the safety of the final products or system manufactured by you.
10. Please contact a Renesas Electronics sales office for details as to environmental matters such as the environmental compatibility of each Renesas Electronics product. Please use Renesas Electronics products in compliance with all applicable laws and regulations that regulate the inclusion or use of controlled substances, including without limitation, the EU RoHS Directive. Renesas Electronics assumes no liability for damages or losses occurring as a result of your noncompliance with applicable laws and regulations.
11. This document may not be reproduced or duplicated, in any form, in whole or in part, without prior written consent of Renesas Electronics.
12. Please contact a Renesas Electronics sales office if you have any questions regarding the information contained in this document or Renesas Electronics products, or if you have any other inquiries.

(Note 1) “Renesas Electronics” as used in this document means Renesas Electronics Corporation and also includes its majority-owned subsidiaries.

(Note 2) “Renesas Electronics product(s)” means any product developed or manufactured by or for Renesas Electronics.

---

# High-performance Embedded Workshop V.4.06

## Release Note

---

### Contents

1.	Notes on Using the High-performance Embedded Workshop.....	2
1.1	Network drive .....	2
1.2	Syntax coloring of the editor .....	2
1.3	File dependencies scanned .....	3
1.4	Navigation facilities .....	4
1.5	Expression .....	5
1.6	Opening a file which caused an error .....	5
1.7	Specifying the directory on an Option dialog box .....	6
1.8	Character sets in the editor window.....	6
1.9	Tools Administration dialog box.....	6
1.10	Adding files to a project.....	6
1.11	Debugging facility (common to all debuggers).....	7
1.12	Debugging facility (SuperH family and H8X, H8S, H8 family debuggers) .....	8
1.13	Windows and dialog boxes .....	12
1.14	Help.....	12
1.15	Macro-Recording Support facility.....	12
1.16	Commands.....	12
1.17	Enhanced compatibility between TCL commands and High-performance Embedded Workshop commands.....	14
1.18	Tcl/Tk command input.....	14
1.19	Commands in TCL Toolkit and Command Line.....	15
2.	Supplement on toolchain .....	16
2.1	File extensions .....	16
3.	Upgrading the toolchain .....	17
4.	Compatibility with Microsoft® Windows® Vista .....	20
4.1	With running High-performance Embedded Workshop V.4.05.00 or later on Windows Vista® by user rights.....	20

## 1. Notes on Using the High-performance Embedded Workshop

This section shows notes on using the High-performance Embedded Workshop.

### 1.1 Network drive

#### 1.1.1 Time discrepancies between computers

The time kept by a computer differs between computers. The time when a source file or output file is updated depends on the computer on which the file has been saved. Building of a project can be incorrect because of this difference in times kept by computers if a source file or output file is shared via a network. If such a problem occurs, adjust the time between all computers or use [Build -> Build All] to build a project.

#### 1.1.2 Building a project on a network drive

When you build a project on the network an error might occur depending on the condition of the network. For example, a C/C++ compiler might output the following error message.

```
C3019(F) Cannot open source file
```

If such an error occurs, build the project again.

#### 1.1.3 Adding a file to a project

When you add a file on a remote drive on the network via [Project -> Add Files] or else, the High-performance Embedded Workshop might cause an application error depending on the condition of the network. In this case, try to add the file to the project again. If application errors occur many times, consider copying the file to a local drive then adding to the project.

## 1.2 Syntax coloring of the editor

With the syntax coloring capability of the High-performance Embedded Workshop, comments and keywords in a source program file are colored. But the syntax coloring of the High-performance Embedded Workshop editor does not work correctly depending on the way the source code is written. Disable the syntax coloring if you are not satisfied with the syntax coloring. To disable it, select [Setup -> Options], uncheck "Enable Syntax Coloring" on the [Editor] tab of the [Options] dialog box, and click on the OK button.

Syntax coloring for C/C++ source files does not work correctly in the following cases:

- (i) A comment is nested.

Example: /\* /\* \*/ \*/ <- The underlined part is colored as a comment.

- (ii) "/\*" or "\*/" is contained in a string.

Example: /\* <- The underlined part is colored as a comment.  
char A["\*/"]; <- The underlined part is colored as a comment.  
 \*/

To prevent this problem, avoid writing \* or / characters adjacent to each other (unless such characters are part of a comment) in a C/C++ source file.

### 1.3 File dependencies scanned

The High-performance Embedded Workshop scans an include file of a source file to show dependencies of source files on the “Projects” tab of the “Workspace” window and to decide whether to build a file or not. Even though the source code is syntactically correct, an error message may appear indicating that an include file has not been correctly recognized as a dependent file. In such cases, (a) build all files by selecting [Build -> Build All] or (b) select the source file in the “Projects” tab of the “Workspace” window and select [Build -> Build (file name)].

Dependencies of C/C++ source files are not scanned correctly in the following cases:

- (i) “/\*” or “\*/” is contained in a string.

```
Example: char A[] = "/*";   <- Assumed as the beginning of a comment.
         #include "file.h" <- This file is not scanned as an include file.
         char B[] = "*/";   <- Assumed as the end of a comment.
```

To support preprocessor statements such as #if, #ifdef, and #define by the High-performance Embedded Workshop, go to the [Build] menu to open the Toolchain Option dialog box. On the [Toolchain Option] tab, check [Support dependency scan of preprocessor statement].

Table 1.1 shows the preprocessor statements that are currently supported.

**Table 1.1 Preprocessor Statements**

Preprocessor Statement	Description
#define	Defines an identifier. When any preprocessor statements include the identifier, this identifier is replaced with the defined character string. e.g. #define NICE_FILE "nice.h" #include NICE_FILE
#undef	Disables replacement of the defined identifier.
#include	Informs the High-performance Embedded Workshop that the specified file is dependent on the current source file.
#if , #else, and #endif #elif	When #if <expression> is entered, the High-performance Embedded Workshop only analyzes the range of source code that satisfies the expression. When the value resulted from the expression is 0: #if to #else When the value resulted from the expression is 1: #else to #endif
defined macro	Entering defined (<identifier>) returns 1 when the identifier has already been defined. Otherwise 0 is returned. This macro is usually written as #if defined (MACRO).
#if def #ifn def	The High-performance Embedded Workshop assumes an #ifdef <identifier> statement as #if 1 when the identifier has already been defined. Otherwise #if 0 is assumed. An #ifn def <identifier> statement, on the other hand, is assumed as #if 0 when the identifier has already been defined, and otherwise #if 1.
#line	Ignored
#error	Ignored
#pragma	Ignored
#	Ignored

When a preprocessor statement has an expression, the following ten kinds of operators are currently supported with the dependency check. The dependency search does not operate correctly if an operator other than those listed below is used.

( ), !, <, <=, >, >=, ==, !=, &&, and ||.

Dependencies of C source files are not scanned correctly in the following cases:

- (ii) [Support dependency scan of preprocessor statement] is selected on the [Toolchain Option] tab of the Toolchain Option dialog box (regardless of the toolchain type) and the operand of assembly code for the function is an immediate value.

Example:

```
static void Change_PSW_PW_to_UserMode(void)
{
    MVFC PSW,R1
    OR #00100000h,R1 <- This leads to an error and dependent files
                           written on the subsequent lines will not be scanned.
        :
        :
}
```

Dependencies of assembly source files are not scanned correctly in the following cases:

- (iii) A source file for the AS30, AS308, or AS100 contains directive "..FILE" or "@" for specifying an include file.

Example: <sample.a30 file>

```
.INCLUDE ..FILE@.inc <- This leads to an error and
                           sample.inc will not be scanned.
```

## 1.4 Navigation facilities

### 1.4.1 Navigation to the definition of C functions

The High-performance Embedded Workshop scans the definitions of C functions in a C/C++ source file and displays tags of the definitions on the "Navigation" tab of the "Workspace" window so that double-clicking on a tag will navigate you to the line of the definition in a corresponding file shown in the editor. When the High-performance Embedded Workshop searches for the definitions of C functions, it ignores all preprocessor directives. The High-performance Embedded Workshop thus may not be able to correctly analyze the definitions of C functions.

For example, two definitions of func() might be displayed on the "Navigation" tab of the "Workspace" window in the following code.

```
#define DEF 1
#ifdef DEF
void func(void)
{
}
#else
int func(int a)
{
}
```

### 1.4.2 Default setting for "C++ Classes" of the Navigation facilities

"C++ Classes" of the navigation facilities is disabled (unchecked) at default. You can check the setting in the "Select Categories" dialog box (figure 1.1). To open the "Select Categories" dialog box, right-click on the window of the "Navigation" tab and then select "Select Categories"

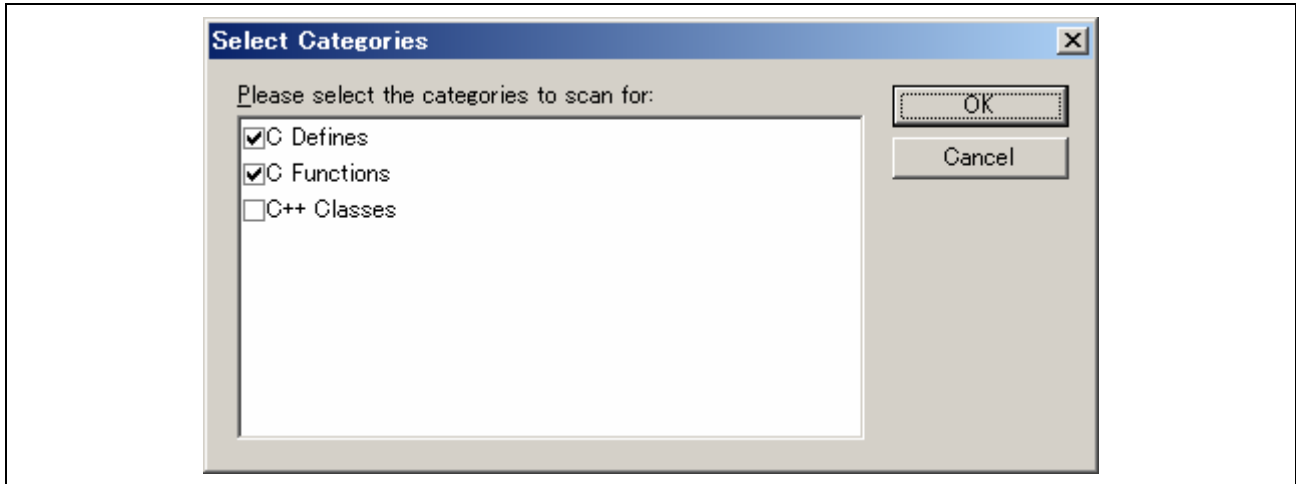


Figure 1.1 Select Categories Dialog Box

### 1.4.3 Warning message by "C++ Classes" of the Navigation facilities

When "C++ Classes" of the navigation facilities is enabled (checked), the warning message will appear (figure 1.2). While this item is enabled, the navigation facilities run in the background. The CPU usage of your host computer may be shown as nearly 100% (depending on the performance of the computer) and the reaction of the High-performance Embedded Workshop may be slow.

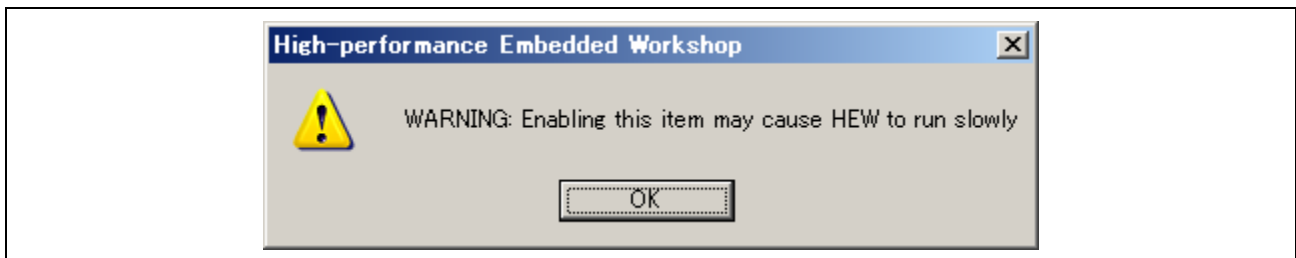


Figure 1.2 Warning Message

## 1.5 Expression

- (1) A function name of the C++ program cannot be specified for the expression symbol.
- (2) No overloaded operator can be used as a function name.

## 1.6 Opening a file which caused an error

This is a note when you double-click on an error/warning message of the C/C++ Compiler or the Assembler on the "Output" window and open the corresponding line of the corresponding file. If the corresponding file window, however, has been minimized in the editor window area, the file is not opened on double clicking on the error/warning message. In this case, restore the file window or maximize it.

## 1.7 Specifying the directory on an Option dialog box

Using the [Build] menu of the High-performance Embedded Workshop, you can launch an option dialog box on which you can specify options to a tool such as a compiler. Especially, when “Custom directory” is selected in the “Relative to” field on a dialog box as shown in figure 1.3, an absolute path must be specified in the “Directory” field.

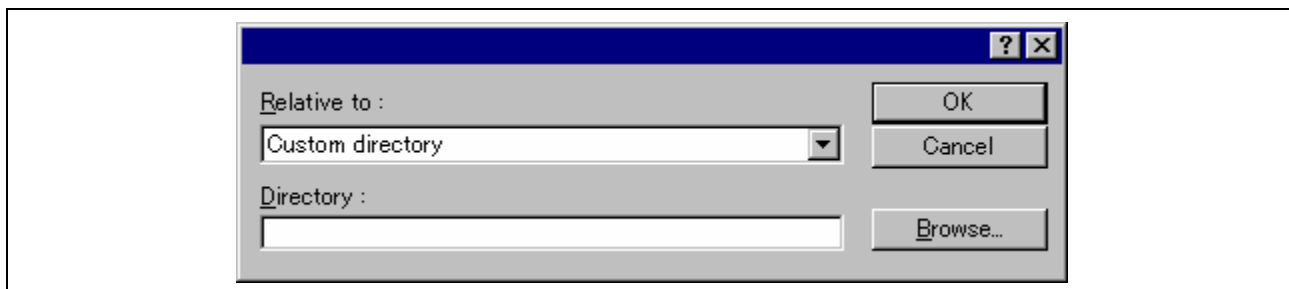


Figure 1.3 Dialog Box to Specify a Directory Path

## 1.8 Character sets in the editor window

The editor window does not support Unicode.

## 1.9 Tools Administration dialog box

### 1.9.1 Uninstallation of components and tools

For High-performance Embedded Workshop V.4.05 and later versions, the [Uninstall] button has been removed from the [Tools Administration] dialog box. Thus you cannot uninstall components or tools individually. If you wish to uninstall any component or tool, uninstall the whole set of the High-performance Embedded Workshop through the Windows® control panel.

### 1.9.2 Deregistration of components and tools

After you have deregistered a component or tool from the High-performance Embedded Workshop by clicking on the [Unregister] button in the [Tools Administration] dialog box, the component or tool will not be registered to the High-performance Embedded Workshop even if you install a software product including that component or tool.

To register the component or tool, use the [Register] button on the [Tools Administration] dialog box. The [Tools Administration] dialog box must be invoked before a workspace is opened. Select [Administration] from the [Tools] menu to open the [Tools Administration] dialog box.

## 1.10 Adding files to a project

When you are adding files to a project through the [Add files to project] dialog box, files may not be hidden even if the [Hide Project Files] checkbox is selected.

This problem depends on the settings of folder options under the Windows Vista® operating system. To check the current settings of folder options under the Windows Vista® operating system, select [Control Panel -> Appearance and Personalization -> Folder Options] to open the [Folder Options] dialog box and click on the [View] tab. If the [Hide extensions for known file types] checkbox in the [Advanced settings] group is selected, the files that have been added to the project cannot be hidden.



## 1.11 Debugging facility (common to all debuggers)

### 1.11.1 Source-level execution

Even standard C libraries are executed by [Step In]. To return to a higher-level function, click on the [Step Out] button. In a “for” statement or a “while” statement, executing a single step does not move to the next line. To move to the next line, execute two steps.

If [Step Out] is executed within an inline function, the program counter (PC) returns to the caller of the non-inline function which called that inline function.

Example: When main() calls Func(), which calls inline InFunc()

```

10 int a = 0;
11 main()
12 {
13     Func();
14 }
15
16 void Func()
17 {
18     InFunc();
19 }
20
21 inline void InFunc()
22 {
23     a++;
24 }

```

When [Step Out] is executed on line 23, the PC returns to line 14. That is, the result is the same as when [Step Out] is executed within Func() (i.e. the PC does not stop at line 19).


### 1.11.2 Moving source file position after creating load module

When the source file is moved after the load module has been created, the [Open] dialog box, which specifies the source file, may be displayed during debugging the created load module. Select the corresponding source file and click on the [Open] button.

### 1.11.3 Editor window

After modifying the program displayed in the editor window and reloading the source files and load modules, close the editor window then open it again; otherwise the program displayed in the window may not be correct.

### 1.11.4 Disassembly window

When [Step] or [Go] is executed while the disassembly and editor windows show data in source mode and mixed mode, respectively, the program counter (PC) icon  may be placed at an incorrect position in the disassembly window. If you wish to start debugging with source mode selected in the disassembly window, be sure to select source mode in the editor window.

### 1.11.5 Stack Trace window

When the stack trace window is opened after an interrupt function has been executed, display of data before the interrupt function is incorrect.

### 1.11.6 Memory window

#### (1) Finding a value in memory

Be sure to select a range with a mouse or click on a specific location in the [Data] or [Code] column in the [Memory] window before starting to search for a value in memory. If you just right-click on the [Memory] window and start searching for a value, the found value will not be highlighted.

(2) Fonts

When a proportional font is selected, part of the characters in the view may be hidden. Fixed fonts are recommended.

### 1.11.7 Entry point

Even when an entry point is specified by the ENTRY option of the linkage editor, the entry point address is not set for the PC during program downloading. Set the PC before program execution.

### 1.11.8 Register window

In High-performance Embedded Workshop V.4.04 and later versions, values in registers are not saved in sessions.

## 1.12 Debugging facility (SuperH family and H8X, H8S, H8 family debuggers)

### 1.12.1 Line assembly

Regardless of the Radix setting, the default for line assembly input is decimal. Specify H' or 0x as the radix for a hexadecimal input.

### 1.12.2 Loading of SYSROF format file

The debugging program of the SYSROF format cannot be loaded. Please make the debugging program by the ELF/DWARF2 format.

### 1.12.3 Session file of Hitachi Debugging Interface

The session file of Hitachi Debugging Interface cannot be used. Please make the file as project workspace of High-performance Embedded Workshop. The command file of Hitachi Debugging Interface can be used.

### 1.12.4 Profiler

Profiler does not support overlay function.

### 1.12.5 Stack Trace window

While the PC is pointing to an address in an inline function, you cannot view the history of function calls.

### 1.12.6 Reference of variables

(1) Local variables in inline functions

While the PC is pointing to an address in an inline function, you cannot use the windows or functions listed below to reference the parameters of functions or the values of local variables defined in functions.

(2) Local variables after optimization

Depending on the generated object code, the windows and functions listed below do not correctly show the values of local variables in a C source file that is compiled with the optimization option enabled. Check the generated object code in the [Disassembly] window.

- The Stack Trace window
- The Locals window
- The Watch window
- Tooltip Watch function
- Instant Watch function

### 1.12.7 Watch window

When a watch item is located outside the scope in debugging of a program, the item is automatically collapsed if it has been expanded. The realtime update setting on the first child item applies to the entire watch item.

### 1.12.8 Configure Overlay dialog box

This dialog box may look as if a section adjacent to an overlay section is also adjacent to another overlay section.

If overlay sections are allocated as (1), (2), and (3) in example 1 and then re-allocated after build as in example 2, the [Configure Overlay] dialog box will be as shown in example 3.

Example 1

```
<Section>
(1) "P11, P12"
(2) "P21"
(3) "P31, P32"
```

Example 2

```
<Sec> <Start - End >
"P11" 0x1000 - 0x10FF (*1)
"P12" 0x1100 - 0x12FF
"P21" 0x1000 - 0x10FF (*1)
"P31" 0x1000 - 0x105F
"P32" 0x1060 - 0x11FF
*1. The end address of "P11" having an adjacent section is the same
    as that of "P21" having no adjacent section.
```

Example 3

```
<Section>
(1) "P11, P12"
(2) "P21, P12" (*2)
(3) "P31, P32"
*2. Looks as if "P12" is adjacent to "P21".
```

### 1.12.9 Command

#### (1) WATCH\_EDIT command

If two or more variables with the same name are assigned different scope and are being watched in the [Watch] window, editing the value of the variable by using the WATCH\_EDIT command only changes the value of the first variable with that name listed in the [Watch] window.

### 1.12.10 Simulator/debugger

#### (1) Memory resource setting function

Note that the specifications of the memory resource setting function of the simulator/debugger differ from those of Renesas emulators.

The specifications for the simulator/debugger are as follows:

- When the memory attribute (Read, Write, or Read/Write) is the same after the memory resource is modified: The simulator/debugger assumes the memory resource size has been modified and changes the memory resource size to the specified value.
- When the memory attribute changes due to modification of the memory resource: The simulator/debugger assumes the memory resource attribute has been modified and changes the memory resource attribute of the specified range to the specified value.

#### (2) The number of breakpoints and the number of Stop-at points in the Run menu

Up to a total of 1,024 PC breakpoints and Stop-at points in the Run menu can be specified. If 1,024 breakpoints are specified, no Stop-at points in the Run menu can be specified. Specify 1,024 or fewer points for the total numbers of PC breakpoints and Stop-at points in the Run menu.

### (3) Debug Settings dialog box

- Do not perform automatic target connection  
The target is connected when [Debug Settings] have been completed irrespective of the setting for the [Do not perform automatic target connection] check box on the [Options] tab.

### (4) SH-4 and SH-4 with BSC simulator/debugger

- In SH-4 with BSC simulator/debugger, if the lower three bits of the source and destination addresses differ in a DMA transfer, the last data transferred will be invalid.  
e.g. SAR0=2000 DAR0=4004 DMATCR0=2 CHCR0=5491  
Memory contents of address H'2000: 0102030405060708  
Contents of address H'4004 after DMA transfer: 0106
- In SH-4 and SH-4 with BSC simulator/debugger, even if an instruction is modified for an address where decoding has been completed, the pipeline is not reset and executed.
- In SH-4 with BSC simulator/debugger, if memory is accessed by a data size that differs from the size specified by the break data, the program may not break when the break conditions are satisfied. To avoid this, specify the same data size for the memory access data size and break data size.
- In SH-4 and SH-4 with BSC simulator/debugger, the pipeline execution for double precision FDIV and FSQRT instructions in the SH-4 simulator/debugger is different from those in the user system. For the SH-4 simulator/debugger, one more cycle is displayed for the F3 stage pipeline.

### (5) SH-3DSP simulator/debugger

- Exception code during DSP loop execution  
If an exception is generated during the DSP loop execution, the exception code set in the EXPEVT (exception event register) will differ from that described in the programming manual.

The exception code in the DSP Loop

General exception events	Programming Manual	Simulator
TLB miss exception/TLB invalid exception (Read)	H'070	H'040
TLB miss exception/TLB invalid exception (Write)	H'070	H'060
TLB protection exception (Read)	H'0D0	H'0A0
TLB protection exception (Write)	H'0D0	H'0C0
CPU address error (Read)	H'070	H'0E0
CPU address error (Write)	H'070	H'100

- X/Y memory access conflict  
If an instruction code and data are allocated to the XRAM memory (or XROM, or YROM, or YRAM), stalls will not be generated by a conflict even if this XRAM memory is accessed by the instruction code fetch and the MOVX or MOVY instruction in the same slot. Therefore, the number of cycles for these two types of access will differ.

- Pipeline execution from an address other than a multiple of four  
If a pipeline execution is performed from an address other than a multiple of four, the fetch stages will differ from those described in the programming manual.

e.g. When pipeline execution is performed from an address other than a multiple of four

Programming Manual	Simulator
IF IF ID EX	IF ID EX
IF ID EX	IF ID EX
if ID EX	if ID EX

(6) Trace function (only for the SH3, SH3E, and SH-3DSP)

- FPU, MAC, or DSP register access information

When an instruction is executed to write data in the FPU, MAC, or DSP register, the simulator/debugger does not display access information in the trace information.

- Pipeline display

For instructions that programming manuals do not describe as writing back data to registers, and if data is written to registers as a result of the execution of such instructions, the simulator/debugger displays such an operation as a stage of memory access and write back in the trace information. The numbers of cycles are correctly displayed.

Trace display by the simulator/debugger		Description in the programming manual				
		IF	DE	EX	MA	SW
05	NOP	06	05			
06	TRAPA #H'10	07	06	05		
--	--	--	--	06		
--	--	--	--	06	06	
--	--	--	--	06	06	
--	--	--	--	06	06	06 (06):SSR<-60000001
--	--	08	--	--	06	06 (06):SPC<-00001006
--	--	09	08	--	--	--

(7) H8SX Simulator/debugger

H8SX Simulator/debugger does not support Middle mode of H8SX CPU.

(8) Selection of the simulator target

When you create a project, select the simulator target corresponding to the CPU and the operating mode.

(9) Internal RAM area in the SH2A-FPU simulator/debugger

Though the memory map of the SH2A-FPU simulator/debugger shows addresses 0xFFFF80000 to 0xFFFFBFFFF as the internal RAM area, the range of 0xFFFFA0000 to 0xFFFFBFFFF are actually reserved. For this reason, note the followings when using the SH2A-FPU simulator/debugger:

- Only use the range of 0xFFFF80000 to 0xFFFF9FFFF as the internal RAM area.
- When a stack area is to be assigned to the internal RAM area, set the initial stack-pointer value so that it will be within the range of 0xFFFF80000 to 0xFFFF9FFFF.

(10) Saving workspaces for older versions of the High-performance Embedded Workshop

In High-performance Embedded Workshop V.4.04 and later versions, workspaces can be saved in the format compatible with older versions of the High-performance Embedded Workshop. Note, however, that the operation of the simulator/debugger may be extremely slow. If you intend to use this new feature, set the trace capacity as 32,768 or less.

### 1.13 Windows and dialog boxes

#### 1.13.1 Scrolling

- (1) Up-scrolling may not be available with an intelligent mouse. In this case, use a scrolling button on the window.
- (2) If your PC has a touchpad with a scroll zone, scrolling the [Disassembly] window or the [Editor] window in the mixed or disassembly mode while pressing the mouse or touchpad button may cause an application error. Do not use the touchpad-scroll feature on the [Disassembly] or [Editor] window while pressing the mouse or touchpad button.

#### 1.13.2 Saving the location of windows

The location of windows displayed may be changed by saving or loading of a session or switching of the virtual desktop.

### 1.14 Help

When the help is used in Windows® English version, the following message box may be displayed: Click on the [Download] button to download 'Japanese Text Display Support', or check the [Never download any of these components.] check box and click on the [Cancel] button. Even if 'Japanese Text Display Support' is not downloaded, the help is normally displayed.

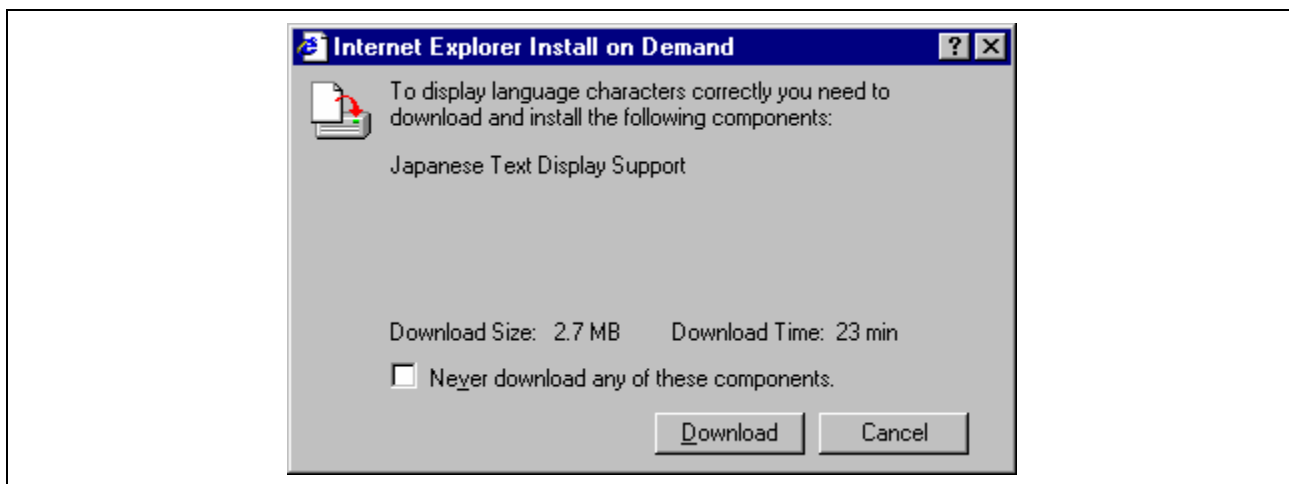


Figure 1.4 Internet Explorer Install on Demand message box

### 1.15 Macro-Recording Support facility

If you use the macro-recording facility to record the action of selecting [Debug -> Go] and [Debug -> Halt Program] into a macro, playing this macro will carry out [Debug -> Go] only. [Debug -> Halt Program] will not be carried out.

### 1.16 Commands

#### 1.16.1 MEMORY\_EDIT command

Even if characters are enclosed with quotation marks ('), the ASCII character strings cannot be input as data. When the character strings are input as data, enter the corresponding numerical values.

### 1.16.2 Command batch file load timing (Debug Settings dialog box)

If you have specified a batch file for [Command batch file load timing] on the [Options] page, the restrictions listed below apply. In such cases, consider the use of other means via the GUI, e.g. menu options or toolbar buttons, instead of commands.

- (1) When the [INITIALIZE] command is specified in the batch file that [At target connection] has been selected for [Command batch file load timing] on the [Options] tab, do not execute the [INITIALIZE] command in the [Command Line] window.  
For initialization, select [Debug -> Initialize].
- (2) Do not specify the following commands in the batch file that [At target connection] has been selected for [Command batch file load timing] on the [Options] tab.
  - (a) [OPEN\_WORKSPACE] command
  - (b) [CHANGE\_PROJECT] command
  - (c) [CHANGE\_CONFIGURATION] command
- (3) Do not execute the [FILE\_LOAD] or [FILE\_LOAD\_ALL] command in the [Command Line] window that [After download of modules] has been selected for [Command batch file load timing] on the [Options] tab.
- (4) Do not specify the following commands in the batch file that [Before download of modules] or [After download of modules] has been selected for [Command batch file load timing] on the [Options] tab.
  - (a) [OPEN\_WORKSPACE] command
  - (b) [CHANGE\_PROJECT] command
  - (c) [CHANGE\_CONFIGURATION] command
  - (d) [GO] command
  - (e) [GO\_RESET] command
  - (f) [GO\_TILL] command
  - (g) [STEP] command
  - (h) [STEP\_OUT] command
  - (i) [STEP\_OVER] command
- (5) Do not execute the [RESET] command in the [Command Line] window that [After reset] has been selected for [Command batch file load timing] on the [Options] tab.
- (6) Do not specify the following commands in the batch file that [After reset] has been selected for [Command batch file load timing] on the [Options] tab.
  - (a) [OPEN\_WORKSPACE] command
  - (b) [CHANGE\_PROJECT] command
  - (c) [CHANGE\_CONFIGURATION] command
  - (d) [RESET] command

### 1.16.3 Command line batch processing (Debug Settings dialog box)

If you have specified the relative path to a batch file for [Command line batch processing] on the [Options] tab, the file may not be correctly accessed.

Specify the absolute path to the batch file that cannot apply a placeholder.

### 1.16.4 File specification of Command Line

To specify a file in the command line, use a placeholder (excluding TCL).

If you wish to specify a directory not included in the placeholder, specify an absolute path. After specifying the absolute path, this file will not be correctly found when it is in another host computer or environment where the path content is different. In such cases, specify the file again.

Example: `FILE_LOAD ELF/DWARF2 $(CONFIGDIR)\demo.abs`

### 1.16.5 CACHE command

Do not specify the CACHE command unless it is defined in the user's manual of the emulator or debugger. The unit of an access to the cache memory is a fixed value such as 0x3FF. Thus the range of the cache memory being accessed may be larger than the access range specified by the user.

### 1.16.6 Abbreviation of a command

- REMOVE\_FILE

In High-performance Embedded Workshop V.3.01 or later version, the abbreviation has been changed from "RF" to "REM".

## 1.17 Enhanced compatibility between TCL commands and High-performance Embedded Workshop commands

Due to enhanced compatibility between TCL commands and High-performance Embedded Workshop commands\*, the execution result of a High-performance Embedded Workshop command "memory\_display 300 10" will not be output by the following specification.

```
for {set i 0} {$i < 2} {incr i} {
    memory_display 300 10
}
```

To make the execution result of the High-performance Embedded Workshop command be output, enclose the High-performance Embedded Workshop command with [] as a parameter of a TCL command "puts".

```
for {set i 0} {$i < 2} {incr i} {
    puts [memory_display 300 10]
}
```

\*Note: Due to this enhanced compatibility, even the execution result of a High-performance Embedded Workshop command can be assigned to a variable as a parameter of a TCL command "set". In the example below, since the execution result of "memory\_display 300 10" is assigned to variable "md\_300\_10", you can view this result by specifying "md\_300\_10" with a TCL command "set".

```
set md_300_10 [memory_display 300 10]
```

## 1.18 Tcl/Tk command input

- (1) Canceling the interactive mode

To return from the interactive mode to the command input mode while using the [TCL Toolkit], enter "/.". It is possible to know the current mode by entering "/.".

- (2) Clearing the contents of a log file

The contents of the [Console] screen are logged to a log file while using [TCL Toolkit]. The log file is in plain text format and placed in the following location:

Example 1) Windows® 2000 or Windows® XP operating system

```
C:\Documents and Settings\<logon user name>\Local Settings\Temp\log.txt
```

Example 2) Windows Vista® operating system

```
C:\users\<logon user name>\AppData\Local\Temp\log.txt
```

If you quit [TCL Toolkit], it automatically erases the contents of the log file. If you want to clear the contents of the log file while using the [TCL Toolkit], execute the following commands.

```
set dir $env(TEMP)
set dataFile [open $dir/log.txt {RDWR TRUNC}]
close $dataFile
```



## 1.19 Commands in TCL Toolkit and Command Line

(1) “trace” command

- (a) To execute the “trace” command for Tcl in [TCL Toolkit], the command name must be specified in lowercase letters.
- (b) To execute the “TRACE” command for Hew in [TCL Toolkit], the command name must be specified in uppercase letters.
- (c) To execute the “trace” command for Tcl in the [Command Line] window, the command name must be replaced with “tcl\_trace”.

(2) “clock” command

- (a) To execute the “clock” command for Tcl in [TCL Toolkit], the command name must be specified in lowercase letters.
- (b) To execute the “CLOCK” command for the emulator in [TCL Toolkit], the command name must be specified in uppercase letters.
- (c) To execute the “clock” command for Tcl in the [Command Line] window, the command name must be replaced with “tcl\_clock”.

(3) “event” command

- (a) To execute the “event” command for Tk in [TCL Toolkit], the command name must be specified in lowercase letters.
- (b) To execute the “EVENT” command for the emulator in [TCL Toolkit], the command name must be specified in uppercase letters.

Note that some emulators do not support commands “CLOCK” and “EVENT”.

## 2. Supplement on toolchain

### 2.1 File extensions

When the High-performance Embedded Workshop executes a tool of the toolchains in a build, the High-performance Embedded Workshop leaves a subcommand file in a configuration directory. A subcommand file of the C/C++ Compiler or the Assembler uses a file extension shown in table 2.1 with the same filename as the input file. The C/C++ Library Generator or the OptLinker uses a file extension shown in table 2.1 with a project name as a filename. The subcommand file has an attribute of a hidden file. If you want to see a hidden file, change the properties of a directory window so that it can display hidden files.

**Table 2.1 File Extensions of Subcommand Files of the Toolchains**

File extension	File group
shg	SuperH RISC engine C/C++ Library Generator
shc	SuperH RISC engine C/C++ Compiler
sha	SuperH RISC engine Assembler
h8g	H8S,H8/300 C/C++ Library Generator
h8c	H8S,H8/300 C/C++ Compiler
h8a	H8S,H8/300 Assembler
hlk	OptLinker
M16cl	M16C/60, M16C/30, M16C/Tiny, M16C/20, M16C/10, R8C/Tiny Linker
M16ci	M16C/60, M16C/30, M16C/Tiny, M16C/20, M16C/10, R8C/Tiny Librarian
M16cc	M16C/60, M16C/30, M16C/Tiny, M16C/20, M16C/10, R8C/Tiny C Compiler
M16ct	M16C/60, M16C/30, M16C/Tiny, M16C/20, M16C/10, R8C/Tiny mkmrtbl (MR30)
M32cl	M32C/80, M16C/80, M16C/70 Linker
M32ci	M32C/80, M16C/80, M16C/70 Librarian
M32cc	M32C/80, M16C/80, M16C/70 C Compiler
M32ct	M32C/80, M16C/80, M16C/70 mr308tbl (MR308)
M32rl	M32R C Compiler
M32ri	M32R Librarian
M32rm	M32R Load module converter
M32rc	M32R C Compiler
M32ra	M32R Assembler
74lk	740 Linker
74lb	740 Librarian
100l	R32C/100 Linker
100i	R32C/100 Librarian
100c	R32C/100 C Compiler
100t	R32C/100 mr100tbl (MR 100)

### 3. Upgrading the toolchain

When any of the following toolchains is used in a project, you can install the latest version to upgrade the toolchain currently in use.

- SuperH family C/C++ compiler package V.5.1 or later
- H8SX, H8S, H8 family C/C++ compiler package V.3.0A or later
- M16C series C compiler package V.5.20 release 1 or later
- M32C series C compiler package V.5.20 release 1 or later
- R32C series C compiler package V.1.01 release 00 or later
- M32R series C/C++ compiler package V.4.20 release 1 or later
- 740 family C compiler package V.1.01 release 01 or later
- 740 family Assembler package V.4.10 release 02 or later

(1) Upgrading from the SuperH Family C/C++ Compiler Package V.5.1x or H8SX, H8S, H8 Family C/C++ Compiler Package V.3.0x

(a) Setting the standard library configuration tool

A standard library configuration tool was added. The High-performance Embedded Workshop checks the optional information on the IM OptLinker at upgrade. When there is a specification to enter the standard library, an option that generates a library is set (Mode -> Build a library file), and when there is no specification, an option that does not generate a library is set (Mode -> Do not add a library file).

(b) Setting the optimizing linker

The IM OptLinker, Librarian, and Stype Converter were integrated and became OptLinker. According to the registered states of each tool before upgrade, the optional setting of OptLinker differs after upgrade. Table 3.1 shows the succession of the option at upgrade.

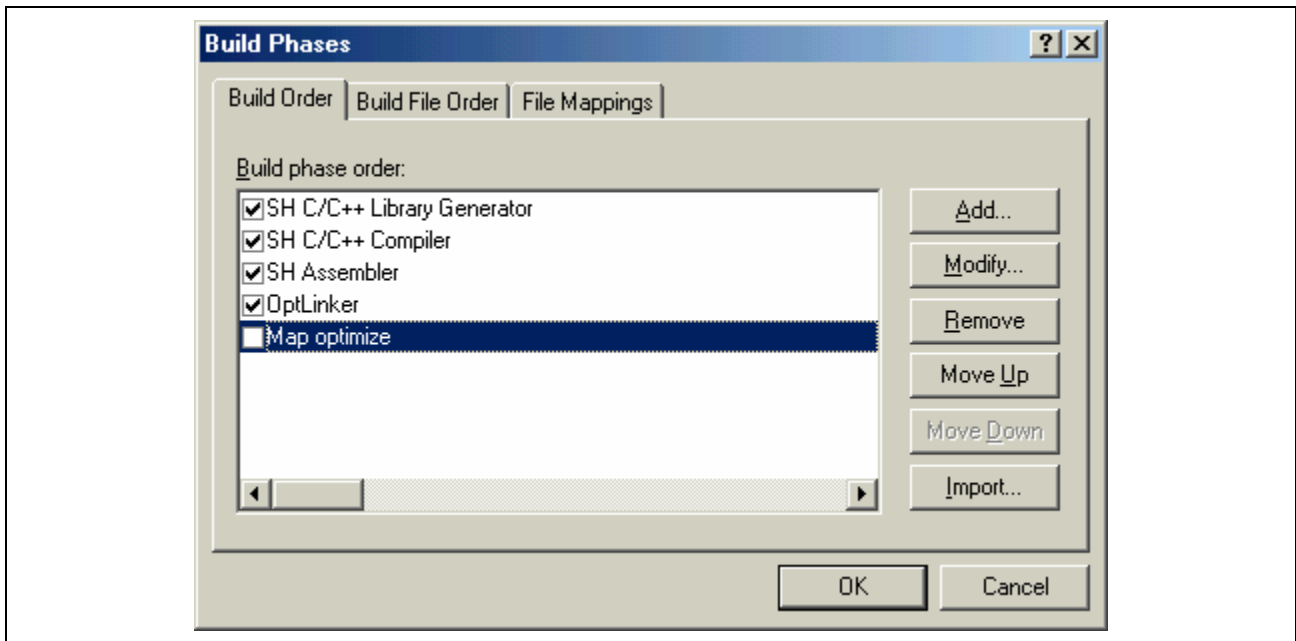
**Table 3.1 Succession of Option at Upgrade**

No.	Before Upgrade				After Upgrade		
	IM OptLinker state	Librarian state	Stype Converter state	OptLinker state	IM OptLinker optional information	Librarian Optional information	Stype Converter optional information
1	—	—	—	—	X	X	X
2	—	—	□	□	X	X	O
3	—	—	■	■	X	X	O
4	—	□	—	□	X	O	X
5	—	□	□	□	X	O	X
6	—	□	■	■	X	X	O
7	—	■	—	■	X	O	X
8	—	■	□	■	X	O	X
9	—	■	■	■	X	O	X
10	□	—	—	□	O	X	X
11	□	—	□	□	O	X	O
12	□	—	■	■	X	X	O
13	□	□	—	□	O	X	X
14	□	□	□	□	O	X	O
15	□	□	■	■	X	X	O
16	□	■	—	■	X	O	X
17	□	■	□	■	X	O	X
18	□	■	■	■	X	O	X
19	■	—	—	■	O	X	X
20	■	—	□	■	O	X	X
21	■	—	■	■	O	X	O
22	■	□	—	■	O	X	X
23	■	□	□	■	O	X	X
24	■	□	■	■	O	X	O
25	■	■	—	■	O	X	X
26	■	■	□	■	O	X	X
27	■	■	■	■	O	X	O

—: Unregistered, □: Registration not checked, ■: Registration checked, O: Succeeded, X: Not succeeded

- (2) Upgrading from the SuperH Family C/C++ Compiler Package
  - (a) Automatic Build for optimizing MAP

In High-performance Embedded Workshop V.2.00 (SH Ver.7.0B/Ver.7.0.01/Ver.7.0.02), to realize optimization by using the external symbol allocation information that has been output by the optimizing linkage editor in the C compiler, a custom phase has been provided for rebuild. In High-performance Embedded Workshop V.2.01 or later version, automatic rebuild is enabled when MAP optimization is executed. Since the custom phase for rebuild is not required, open the Build Phases dialog box and remove a check for the 'Map optimize' phase, as shown in figure 3.1.



**Figure 3.1 Build Phases Dialog Box**

## 4. Compatibility with Microsoft® Windows® Vista

### 4.1 With running High-performance Embedded Workshop V.4.05.00 or later on Windows Vista® by user rights

Please take note of the following problem in using High-performance Embedded Workshop V.4.05.00 or later:  
With running High-performance Embedded Workshop V.4.05.00 or later on Windows Vista® by user rights

#### 4.1.1 Description

Even if your High-performance Embedded Workshop and all the software-development tools managed by it are compatible with Windows Vista®, the OS may request you to be logged on as a member of the Administrators group; that is, you cannot run them on the OS by user rights.

This problem arises when you are logged on as a member of the Administrators group and make the settings for running High-performance Embedded Workshop V.4.04.01 or earlier on Windows Vista® by using the Compatibility tab, and afterward you update the IDE to the one compatible with Windows Vista® (High-performance Embedded Workshop V.4.05.00 or later).

NOTICE:

High-performance Embedded Workshop can run on Windows Vista® by user rights when the following are both satisfied:

- (1) The IDE is compatible with Windows Vista®; that is, its version is V.4.05.00 or later.
  - (2) All the software-development tools managed by the IDE are also compatible with Windows Vista®.
- Otherwise, you must be logged on as a member of the Administrators group to run the IDE on Windows Vista® as well as installing any software-development tool.

#### 4.1.2 Workarounds

To avoid the problem, use either of the following ways:

- (1) Re-setting items in the Compatibility tab of the program's Properties dialog box
  - a. Right-click the shortcut of High-performance Embedded Workshop to open the Properties dialog box.
  - b. In the Compatibility tab, clear the following two check boxes:
    - Run This Program in Compatibility Mode
    - Run the Program as an Administration
- (2) Using the program's Compatibility wizard
  - a. On Windows' Start menu, click Control Panel, Programs, and "Use an older Program with this version of Windows" to open the program's Compatibility wizard; then click Next.
  - b. In the window that appears, check the I want to choose from a list of programs check box and select High-performance Embedded Workshop in the list; then click Next.
  - c. In the window for selecting the program's Compatibility mode, select "Do not apply a compatibility mode"; then click Next.
  - d. In the window that appears, clear the Run the Program as an Administration check box.
  - e. Click Next to continue the wizard, and try starting High-performance Embedded Workshop.
  - f. If the IDE starts successfully, select the Yes, set this program to always use these compatibility settings check box, click Next, and then press Finish to close the Compatibility wizard.

All trademarks and registered trademarks are the property of their respective owners.

Notes regarding these materials

1. This document is provided for reference purposes only so that Renesas customers may select the appropriate Renesas products for their use. Renesas neither makes warranties or representations with respect to the accuracy or completeness of the information contained in this document nor grants any license to any intellectual property rights or any other rights of Renesas or any third party with respect to the information in this document.
2. Renesas shall have no liability for damages or infringement of any intellectual property or other rights arising out of the use of any information in this document, including, but not limited to, product data, diagrams, charts, programs, algorithms, and application circuit examples.
3. You should not use the products or the technology described in this document for the purpose of military applications such as the development of weapons of mass destruction or for the purpose of any other military use. When exporting the products or technology described herein, you should follow the applicable export control laws and regulations, and procedures required by such laws and regulations.
4. All information included in this document such as product data, diagrams, charts, programs, algorithms, and application circuit examples, is current as of the date this document is issued. Such information, however, is subject to change without any prior notice. Before purchasing or using any Renesas products listed in this document, please confirm the latest product information with a Renesas sales office. Also, please pay regular and careful attention to additional and different information to be disclosed by Renesas such as that disclosed through our website. (<http://www.renesas.com>)
5. Renesas has used reasonable care in compiling the information included in this document, but Renesas assumes no liability whatsoever for any damages incurred as a result of errors or omissions in the information included in this document.
6. When using or otherwise relying on the information in this document, you should evaluate the information in light of the total system before deciding about the applicability of such information to the intended application. Renesas makes no representations, warranties or guaranties regarding the suitability of its products for any particular application and specifically disclaims any liability arising out of the application and use of the information in this document or Renesas products.
7. With the exception of products specified by Renesas as suitable for automobile applications, Renesas products are not designed, manufactured or tested for applications or otherwise in systems the failure or malfunction of which may cause a direct threat to human life or create a risk of human injury or which require especially high quality and reliability such as safety systems, or equipment or systems for transportation and traffic, healthcare, combustion control, aerospace and aeronautics, nuclear power, or undersea communication transmission. If you are considering the use of our products for such purposes, please contact a Renesas sales office beforehand. Renesas shall have no liability for damages arising out of the uses set forth above.
8. Notwithstanding the preceding paragraph, you should not use Renesas products for the purposes listed below:
  - (1) artificial life support devices or systems
  - (2) surgical implantations
  - (3) healthcare intervention (e.g., excision, administration of medication, etc.)
  - (4) any other purposes that pose a direct threat to human life
 Renesas shall have no liability for damages arising out of the uses set forth in the above and purchasers who elect to use Renesas products in any of the foregoing applications shall indemnify and hold harmless Renesas Technology Corp., its affiliated companies and their officers, directors, and employees against any and all damages arising out of such applications.
9. You should use the products described herein within the range specified by Renesas, especially with respect to the maximum rating, operating supply voltage range, movement power voltage range, heat radiation characteristics, installation and other product characteristics. Renesas shall have no liability for malfunctions or damages arising out of the use of Renesas products beyond such specified ranges.
10. Although Renesas endeavors to improve the quality and reliability of its products, IC products have specific characteristics such as the occurrence of failure at a certain rate and malfunctions under certain use conditions. Please be sure to implement safety measures to guard against the possibility of physical injury, and injury or damage caused by fire in the event of the failure of a Renesas product, such as safety design for hardware and software including but not limited to redundancy, fire control and malfunction prevention, appropriate treatment for aging degradation or any other applicable measures. Among others, since the evaluation of microcomputer software alone is very difficult, please evaluate the safety of the final products or system manufactured by you.
11. In case Renesas products listed in this document are detached from the products to which the Renesas products are attached or affixed, the risk of accident such as swallowing by infants and small children is very high. You should implement safety measures so that Renesas products may not be easily detached from your products. Renesas shall have no liability for damages arising out of such detachment.
12. This document may not be reproduced or duplicated, in any form, in whole or in part, without prior written approval from Renesas.
13. Please contact a Renesas sales office if you have any questions regarding the information contained in this document, Renesas semiconductor products, or if you have any other inquiries.