

Contents

Chapter 1. Target Devices	3
Chapter 2. User's Manuals	8
Chapter 3. Key Points for Selecting Uninstallation Method.....	9
Chapter 4. Changes	10
4.1 Changes List.....	10
4.2 Details of Changes	12
4.2.1 Eliminate of Data handled by polling.....	12
4.2.2 Change of Clock Generator Setting	12
4.2.3 Addition of Pin View	12
4.2.4 Addition of API.....	14
4.2.5 Changes of TRGC and TRGD register setting.....	15
4.2.6 Change of SCKCR2 register setting	15
4.2.7 Change of BUS setting.....	15
4.2.8 Change of SCI setting	15
4.2.9 Changes of MTIOC3D pin setting for MTU3 normal mode.....	15
4.2.10 Output code changes of Simple I2C bus (SCI)	15
4.2.11 Changes of Clock Generator Setting (PLL Circuit Operation)	16
4.2.12 Changes of an error is generated in the address output pins for the bus.....	16
4.2.13 Changes of a selection error is generated for the pin settings of TPU	16
4.2.14 Changes of 12-bit A/D Converter (S12ADC)	16
4.2.15 Changes of 12-bit D/A Converter (R12DA).....	16
4.2.16 Changes of bus settings.....	17
4.2.17 Changes of Code Generated for the Clock Generation Circuit (HOCO Operation)	17
4.2.18 Changes of complementary PWM mode setting of the MTU.....	17
4.2.19 Changes of interrupt when the MTU is set for complementary PWM mode.....	17
4.2.20 Changes of setting of the data transfer controller (DTC)	17
4.2.21 Changes of using the MPC to Select Functions of the PAn Pins	18
4.2.22 Changes of Clock Edge Select of MTU	18
4.2.23 Changes of triggers to start conversion by the A/D converter of MTU	18
4.2.24 Output code changes of POE	18
4.2.25 Changes of I/O Ports function	18
4.2.26 Changes of setting of pins, which are multiplexed with PORTH.....	18
4.2.27 Changes of display of Pin View.....	19
Chapter 5. Cautions.....	20
5.1 Cautions List.....	20
5.2 Cautions Details	21

5.2.1 Cautions of USB functions	21
5.2.2 Cautions of Low Power Consumption functions	21
5.2.3 Cautions of SCI (Asynchronous Mode) functions	21
5.2.4 Cautions of User boot mode	21
5.2.5 Cautions of extension code and multi-master of IIC.....	21
5.2.6 Cautions of combination with the real-time OS for RX family	21
5.2.7 Cautions of the fast interrupt.....	21
5.2.8 Caution of compatibility problem.....	22
5.2.9 Caution of display of Pin View (TMR)	23
Chapter 6. About API added and changed.....	24
6.1 About API added for RX113.....	24
6.2 About API added for RX23T.....	26

Chapter 1. Target Devices

Below is a list of devices supported by the Code Generator for RX110 V1.05.02.01	
PIN	Device name
36pin	R5F5110HAxLM, R5F5110JAxLM, R5F51101AxLM, R5F51103AxLM
40pin	R5F5110HAxNF, R5F5110JAxNF, R5F51101AxNF, R5F51103AxNF
48pin	R5F5110JAxFL, R5F5110JAxNE, R5F51101AxFL, R5F51101AxNE R5F51103AxFL, R5F51103AxNE, R5F51104AxFL, R5F51104AxNE R5F51105AxFL, R5F51105AxNE
64pin	R5F5110JAxFK, R5F5110JAxFM, R5F5110JAxLF R5F51101AxFK, R5F51101AxFM, R5F51101AxLF R5F51103AxFK, R5F51103AxFM, R5F51103AxLF R5F51104AxFK, R5F51104AxFM, R5F51104AxLF R5F51105AxFK, R5F51105AxFM, R5F51105AxLF
The Code Generator for RX110 is based on the following documents.	
Manual Name	Document Number
RX110 Group User's Manual: Hardware	R01UH0421JJ0100
	R01UH0421EJ0100

Below is a list of devices supported by the Code Generator for RX111 V1.05.02.01	
PIN	Device name
36pin	R5F5111JAxLM, R5F51111AxLM, R5F51113AxLM
40pin	R5F5111JAxNF, R5F51111AxNF, R5F51113AxNF
48pin	R5F5111JAxFL, R5F5111JAxNE, R5F51111AxFL, R5F51111AxNE R5F51113AxFL, R5F51113AxNE, R5F51114AxFL, R5F51114AxNE R5F51115AxFL, R5F51115AxNE, R5F51116AxFL, R5F51116AxNE R5F51117AxFL, R5F51117AxNE, R5F51118AxFL, R5F51118AxNE
64pin	R5F5111JAxFK, R5F5111JAxFM, R5F5111JAxLF R5F51111AxFK, R5F51111AxFM, R5F51111AxLF R5F51113AxFK, R5F51113AxFM, R5F51113AxLF R5F51114AxFK, R5F51114AxFM, R5F51114AxLF R5F51115AxFK, R5F51115AxFM, R5F51115AxLF R5F51116AxFK, R5F51116AxFM, R5F51116AxLF R5F51117AxFK, R5F51117AxFM, R5F51117AxLF R5F51118AxFK, R5F51118AxFM, R5F51118AxLF
The Code Generator for RX111 is based on the following documents.	
Manual Name	Document Number
RX111 Group User's Manual: Hardware	R01UH0365JJ0110
	R01UH0365EJ0110

Below is a list of devices supported by the Code Generator for RX113 V1.02.02.01	
PIN	Device name
64pin	R5F51135AxLJ, R5F51136AxLJ, R5F51137AxLJ, R5F51138AxLJ
100pin	R5F51135AxFP, R5F51136AxFP, R5F51137AxFP, R5F51138AxFP R5F51135AxFM, R5F51136AxFM, R5F51137AxFM, R5F51138AxFM
The Code Generator for RX113 is based on the following documents.	
Manual Name	Document Number
RX113 Group User's Manual: Hardware	R01UH0448JJ0100
	R01UH0448EJ0100

Below is a list of devices supported by the Code Generator for RX130 V1.00.00.02	
PIN	Device name
48pin	R5F51303AxFL, R5F51305AxFL, R5F51303AxNE, R5F51305AxNE
64pin	R5F51303AxFM, R5F51305AxFM, R5F51303AxFK, R5F51305AxFK
80pin	R5F51303AxFN, R5F51305AxFN
The Code Generator for RX130 is based on the following documents.	
Manual Name	Document Number
RX130 Group User's Manual: Hardware	R01UH0560JJ0100
	R01UH0560EJ0100

Below is a list of devices supported by the Code Generator for RX230, RX231 V1.00.01.01	
RX230 Group	
PIN	Device name
48pin	R5F52305AxNE, R5F52306AxNE, R5F52305AxFL, R5F52306AxFL
64pin	R5F52305AxND, R5F52306AxND, R5F52305AxFM, R5F52306AxFM R5F52305AxLF, R5F52306AxLF
100pin	R5F52305AxLA, R5F52306AxLA, R5F52305AxFP, R5F52306AxFP
RX231 Group	
PIN	Device name
48pin	R5F52315AxNE, R5F52316AxNE, R5F52317AxNE, R5F52318AxNE R5F52315CxNE, R5F52316CxNE, R5F52317BxNE, R5F52318BxNE R5F52315AxFL, R5F52316AxFL, R5F52317AxFL, R5F52318AxFL R5F52315CxFL, R5F52316CxFL, R5F52317BxFL, R5F52318BxFL
64pin	R5F52315AxND, R5F52316AxND, R5F52317AxND, R5F52318AxND R5F52315CxND, R5F52316CxND, R5F52317BxND, R5F52318BxND R5F52315AxFM, R5F52316AxFM, R5F52317AxFM, R5F52318AxFM R5F52315CxFM, R5F52316CxFM, R5F52317BxFM, R5F52318BxFM R5F52315CxLF, R5F52316CxLF
100pin	R5F52315AxLA, R5F52316AxLA, R5F52317AxLA, R5F52318AxLA R5F52315CxLA, R5F52316CxLA, R5F52317BxLA, R5F52318BxLA R5F52315AxFP, R5F52316AxFP, R5F52317AxFP, R5F52318AxFP R5F52315CxFP, R5F52316CxFP, R5F52317BxFP, R5F52318BxFP
The Code Generator for RX230, RX231 is based on the following documents.	
Manual Name	Manual Name
RX230 Group, RX231 Group User's Manual: Hardware	R01UH0496JJ0100
	R01UH0496EJ0100

Below is a list of devices supported by the Code Generator for RX23T V1.00.01.01	
PIN	Device name
48pin	R5F523T3AxFL, R5F523T5AxFL
52pin	R5F523T3AxFD, R5F523T5AxFD
64pin	R5F523T3AxFM, R5F523T5AxFM
The Code Generator for RX23T is based on the following documents.	
Manual Name	Document Number
RX23T Group User's Manual: Hardware	R01UH0520JJ0100
	R01UH0520EJ0100

Below is a list of devices supported by the Code Generator for RX24T V1.00.00.03	
PIN	Device name
80pin	R5F524T8AxFF, R5F524T8AxFN, R5F524TAAxFF, R5F524TAAxFN
100pin	R5F524T8AxFP, R5F524TAAxFP
The Code Generator for RX24T is based on the following documents.	
Manual Name	Document Number
RX24T Group User's Manual: Hardware	R01UH0576JJ0100
	R01UH0576EJ0100

Below is a list of devices supported by the Code Generator for RX64M V1.02.02.01	
PIN	Device name
100pin	R5F56MFCxFP, R5F56MFCxLJ, R5F56MFDxFP, R5F56MFDxLJ R5F56MGCxFP, R5F56MGCxLJ, R5F56MGDxFP, R5F56MGDxLJ R5F56MJCxFP, R5F56MJCxLJ, R5F56MJDxFP, R5F56MJDxLJ R5F56MLCxFP, R5F56MLCxLJ, R5F56MLDxFP, R5F56MLDxLJ
144/145pin	R5F56MFCxFB, R5F56MFCxLK, R5F56MFDxFB, R5F56MFDxLK R5F56MGCxFB, R5F56MGCxLK, R5F56MGDxFB, R5F56MGDxLK R5F56MJCxFB, R5F56MJCxLK, R5F56MJDxFB, R5F56MJDxLK R5F56MLCxFB, R5F56MLCxLK, R5F56MLDxFB, R5F56MLDxLK
176/177pin	R5F56MFDxFC, R5F56MFDxBG, R5F56MFDxLC, R5F56MFCxFC R5F56MFCxBG, R5F56MFCxLC, R5F56MGDxFC, R5F56MGDxBG R5F56MGDxLC, R5F56MGCxFC, R5F56MGCxBG, R5F56MGCxLC R5F56MJDxFC, R5F56MJDxBG, R5F56MJDxLC, R5F56MJCxFC R5F56MJCxBG, R5F56MJCxLC, R5F56MLDxFC, R5F56MLDxBG R5F56MLDxLC, R5F56MLCxFC, R5F56MLCxBG, R5F56MLCxLC
The Code Generator for RX64M is based on the following documents.	
Manual Name	Document Number
RX64M Group User's Manual: Hardware	R01UH0377JJ0090
	R01UH0377EJ0090

Below is a list of devices supported by the Code Generator for RX71M V1.00.03.01	
PIN	Device name
100pin	R5F571MFDxFP, R5F571MFCxLJ, R5F571MFDxFP, R5F571MFDxLJ R5F571MGDxFP, R5F571MGDxLJ, R5F571MGCxFP, R5F571MGCxLJ R5F571MJDxFP, R5F571MJDxLJ, R5F571MJCxFP, R5F571MJCxLJ R5F571MLDxFP, R5F571MLDxLJ, R5F571MLCxFP, R5F571MLCxLJ
144/145pin	R5F571MFCxFB, R5F571MFCxLK, R5F571MFDxFB, R5F571MFDxLK R5F571MGCxFB, R5F571MGCxLK, R5F571MGDxFB, R5F571MGDxLK R5F571MJCxFB, R5F571MJCxLK, R5F571MJDxFB, R5F571MJDxLK R5F571MLCxFB, R5F571MLCxLK, R5F571MLDxFB, R5F571MLDxLK
176/177/178pin	R5F571MFDxFC, R5F571MFDxBG, R5F571MFDxLC, R5F571MFCxFC, R5F571MFCxBG, R5F571MFCxLC, R5F571MGDxFC, R5F571MGDxBG, R5F571MGDxLC, R5F571MGCxFC, R5F571MGCxBG, R5F571MGCxLC, R5F571MJDxFC, R5F571MJDxBG, R5F571MJDxLC, R5F571MJCxFC, R5F571MJCxBG, R5F571MJCxLC, R5F571MLDxFC, R5F571MLDxBG, R5F571MLDxLC, R5F571MLCxFC, R5F571MLCxBG, R5F571MLCxLC
The Code Generator for RX71M is based on the following documents.	
Manual Name	Document Number
RX71M Group User's Manual: Hardware	R01UH0493JJ0100
	R01UH0493EJ0100

Chapter 2. User's Manuals

Please read the following user's manuals together with this document.

Manual Name	Document Number
CS+ Code Generator Tool Integrated Development Environment User's Manual: RX API Reference[CS+ for CC]	R20UT3103EJ0100
CS+ Code Generator Tool Integrated Development Environment User's Manual: Peripheral Function Operation[CS+ for CC][CS+ for CA,CX]	R20UT3104EJ0100
CS+ Code Generator Tool Integrated Development Environment User's Manual: Pin View[CS+ for CC][CS+ for CA,CX]	R20UT3105EJ0100
CS+ V3.02.00 Integrated Development Environment User's Manual: Message[CS+ for CC]	R20UT3459EJ0100

Chapter 3. Key Points for Selecting Uninstallation Method

There are two ways to uninstall this product.

- Use the integrated uninstaller (uninstalls CS+)
- Use separate uninstaller (uninstalls this product only)

To use the separate uninstaller, select the following from the Control Panel:

- Programs and Features

Then select "CS+ Code Generator for RX".

Chapter 4. Changes

This chapter describes change from V1.08.00 to V1.09.00.

4.1 Changes List

No	Description	Corresponds of code generation								
		RX110	RX111	RX113	RX130	RX230, RX231	RX23T	RX24T	RX64M	RX71M
		V1.05.02.01	V1.05.02.01	V1.02.02.01	V1.00.00.02	V1.00.01.01	V1.00.01.01	V1.00.00.03	V1.02.02.01	V1.00.03.01
1	Eliminate of Data handled by polling	—	—	/	/	/	/	/	/	/
2	Change of Clock Generator Setting	—	—	/	/	/	/	/	/	/
3	Addition of Pin View	—	—	/	/	/	/	/	—	/
4	Addition of API	/	/	—	/	/	—	/	/	/
5	Changes of TRGC and TRGD register setting	/	—	/	/	/	/	/	—	—
6	Change of SCKCR2 register setting	/	/	/	/	/	/	/	—	/
7	Change of BUS setting	/	/	/	/	/	/	/	—	/
8	Change of SCI setting	—	—	—	/	/	/	/	—	—
9	Changes of MTIOC3D pin setting for MTU3 normal mode	/	/	/	/	/	/	/	—	/
10	Output code changes of Simple I2C bus (SCI)	/	—	—	/	/	—	/	—	—
11	Changes of Clock Generator Setting (PLL Circuit Operation)	/	—	—	/	/	—	/	/	/
12	Changes of an error is generated in the address output pins for the bus	/	/	/	/	/	—	/	/	/
13	Changes of a selection error is generated for the pin settings of TPU	/	/	/	/	/	—	/	/	/
14	Changes of 12-bit A/D Converter (S12ADC)	/	/	/	/	/	/	/	○	○
15	Changes of 12-bit D/A Converter (R12DA)	/	/	/	/	/	/	/	○	○
16	Changes of bus settings	/	/	/	/	/	/	/	○	○
17	Changes of Code Generated for the Clock Generation Circuit (HOCO Operation)	/	○	○	/	/	/	/	/	/
18	Changes of complementary PWM mode setting of the MTU	/	/	/	/	○	/	/	/	/

No	Description	Corresponds of code generation							
		RX110	RX111	RX113	RX130	RX230, RX231	RX23T	RX24T	RX64M
		V1.05.02.01	V1.05.02.01	V1.02.02.01	V1.00.00.02	V1.00.01.01	V1.00.01.01	V1.00.00.03	V1.02.02.01
19	Changes of interrupt when the MTU is set for complementary PWM mode	○	○	○	/	○	○	/	/
20	Changes of setting of the data transfer controller (DTC)	/	/	○	/	○	○	/	○
21	Changes of	/	/	○	/	/	/	/	/
22	Changes of Clock Edge Select of MTU	/	/	/	/	/	○	/	/
23	Changes of triggers to start conversion by the A/D converter of MTU	/	/	/	/	/	○	/	/
24	Output code changes of POE	/	/	/	/	/	○	/	/
25	Changes of I/O Ports function	/	/	/	/	○	/	/	/
26	Changes of setting of pins, which are multiplexed with PORTH	/	/	/	/	○	/	/	/
27	Changes of display of Pin View	/	/	/	/	○	/	/	/

○: Correspondence, -: Not correspondence (finish of correction), /: Outside of function

4.2 Details of Changes

4.2.1 Eliminate of Data handled by polling

The selection "Data handled by polling" was eliminated.

- Data processing settings for the serial communication interface (SCI)
- Data processing settings for the serial peripheral interface

This issue has been corrected in Code Generator for RX V1.01.00.

4.2.2 Change of Clock Generator Setting

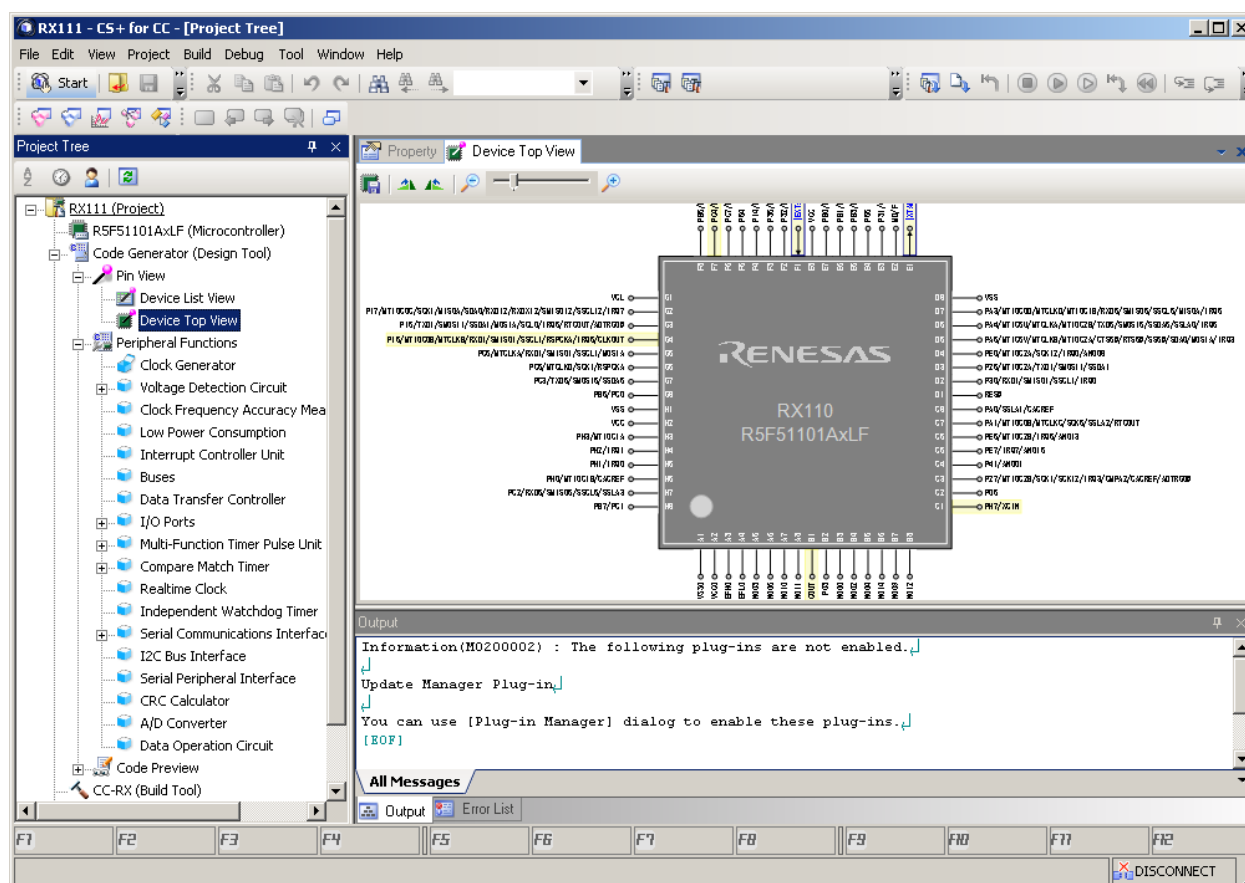
In the clock generator setting, it corrected so that the value exceeding restriction of a device could not be set up.

This issue has been corrected in Code Generator for RX V1.01.00.

4.2.3 Addition of Pin View

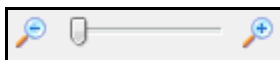
Pin View displays current pin settings by Code Generator. There are Device Top View and Device Top View.

This issue has been corrected in Code Generator for RX V1.01.00



Rotate

Device Top View supports rotate function. It allows user to rotate the Device Top View either in clockwise or anti-clockwise direction in steps of 90 degree.

Zoom

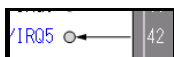
Device Top View supports zoom function. The zoom slider controls the zoom level.

Drag and Move

Device Top View supports mouse drags action. Hold down mouse left button on the graph and move will drag the graph around.

Highlight Pins by Peripheral

Device Top View will highlight the group of pins that belongs to the active CG peripheral (macro).

Input / Output (I/O) Direction Display

Device Top View supports I/O direction of each pin. Input/output direction is indicated by an arrow.

Pin Label Color Highlight

When pin label is displayed in blue color and indicated with parenthesis, it refers to pin function is configured in Code Generator.

Device Top View Output File

Click on the "Save Device Top View" button on Device Top View toolbar, the Device Top View is saved as an image file, in PNG format.

Configure Pin View Color in Property Window

Pin View supports for user to change color, through the property window.

Right click on the Device Top View on project tree, the property window will pop up a right click menu.

Device List View

Device List view displays the pin information in a data grid format. It has two data lists: 'Pin Number' and 'Macro'. Both lists refer to the same pin configuration as shown on the Device Top View.

Pin Number List Window

Pin Number list displays current pins configuration pin number.

Pin no.	Pin name	Selected function	Pin direction	Pin remarks
A1	AVSS0	Not assigned	-	
A2	AVCC0	Not assigned	-	
A3	VREFH0/PJ6	Not assigned	-	
A4	VREFL0/PJ7	Not assigned	-	
A5	P43/AN003	Not assigned	-	
A6	P46/AN006	Not assigned	-	
A7	PE2/MTIOC4A/RXD12/RXD12/SMI...	Not assigned	-	
A8	PE3/MTIOC0A/MTIOC1B/MTIOC4B/...	Not assigned	-	
B1	XCOUT	Not assigned	-	
B2	P03/DA0	Not assigned	-	
B3	P40/AN000	Not assigned	-	
B4	P42/AN002	Not assigned	-	

Macro List Window

'Macro' list displays the information and grouped by each peripheral.

Pin name	Available assign	Pin no.	Pin direction	Pin remarks
IRQ3	-	Not assigned	In	
IRQ0	P30/MTIOC4B/POE8#/RXD1/SMISO1/SSCL1/IRQ0	4	In	
IRQ1	-	Not assigned	In	
NMI	-	Not assigned	In	
IRQ2	-	Not assigned	In	
IRQ7	-	Not assigned	In	
IRQ6	-	Not assigned	In	
IRQ5	-	Not assigned	In	
IRQ4	-	Not assigned	In	

4.2.4 Addition of API

API was added to RX113. Chapter 6 API which is this note about the API specification, please refer to it.

This issue has been corrected in Code Generator for RX V1.04.00.

API was added to RX23T. Chapter 6 API which is this note about the API specification, please refer to it.

This issue has been corrected in Code Generator for RX V1.07.00.

4.2.5 Changes of TRGC and TRGD register setting

In some cases, required code for setting the TGRC and TGRD registers is not output to the create function that is generated in response to setting up the multi-function timer pulse unit (MTU) or 16-bit timer pulse unit (TPU).

This issue has been corrected in Code Generator for RX V1.06.00.

4.2.6 Change of SCKCR2 register setting

There is an error in the output code of the void R_CGC_Create(void) function, which is in the r_cg_cgc.c source file for clock settings. In writing a value to system clock control register 2 (SCKCR2), bit 0 is erroneously set to "0". The correct setting for bit 0 is "1".

This issue has been corrected in Code Generator for RX V1.06.00.

4.2.7 Change of BUS setting

When setting a separate bus in the interface for bus area settings, the address latch signal (ALE) has to be enabled. The use of a separate bus was originally selectable regardless of the ALE setting.

This issue has been corrected in Code Generator for RX V1.06.00.

4.2.8 Change of SCI setting

The output cord when choosing a simple SPI bus by SCI and carrying out cord generation, isn't right. When the R_SCIn_Stop (void) function is carried out, even if the R_SCIn_Start (void) function is carried out, it can't be received.

This issue has been corrected in Code Generator for RX V1.06.00.

4.2.9 Changes of MTIOC3D pin setting for MTU3 normal mode

When the MTU3 is set with the following conditions, the code generated for port settings is not correct.

- Applicable channel: MTU3
- Function setting: Normal mode
- TGRD3: Output compare register
- Output of MTIOC3D pin: PC4

This issue has been corrected in Code Generator for RX V1.07.00.

4.2.10 Output code changes of Simple I2C bus (SCI)

When the SCI is set with the following conditions, the generated handler code will not be correct. In master reception, the data reception clock is generated for an extra byte. The extra received data are not stored at the designated address.

- Applicable channel: All
- Function setting: Simple I2C bus
- I2C interrupt mode select: Use the reception and transmission interrupts.

This issue has been corrected in Code Generator for RX V1.07.00.

4.2.11 Changes of Clock Generator Setting (PLL Circuit Operation)

When "Operation" is selected under "PLL circuit setting" on the "Clock Generator" page, the generated code has an error.

This issue has been corrected in Code Generator for RX V1.07.00.

4.2.12 Changes of an error is generated in the address output pins for the bus

An error is generated in the address output pins "A16-A23" when the following address output pin settings are made for the bus.

- (1) "P71" is selected as the CS1#output pin after checking "Use CS1" with the bus operation setting "Used".
- (2) After selecting "Normal mode" for TPU1 in the 16-bit timer pulse unit settings, "P14" is enabled and set as the TCLKA pin.
- (3) General registers TGRA1 and TGRB1 of TPU1 are set as "Output compare register", after which pins TIOCA1 and TIOCB1 are set to "output disabled".
- (4) The address output pin settings for the bus are made.

This issue has been corrected in Code Generator for RX V1.07.00.

4.2.13 Changes of a selection error is generated for the pin settings of TPU

A selection error is generated for the TIOCA1 pin of TPU1 of the 16-bit timer pulse unit when the following settings for the unit are made.

- (1) TPU1 of the 16-bit timer pulse unit is set to "Phase counting mode 1", a check mark is placed against "TCLKA pin", and "P14" is selected as the TCLKA pin.
- (2) The TIOCA1 and TIOCB1 pins of TPU1 are set to "Input capture at TPU0.TGRn input capture/compare match".
- (3) MTU0 of the Multifunction Timer Pulse Unit 3 is set to "Normal mode" and a check mark is placed against "MTCLKA pin".

This issue has been corrected in Code Generator for RX V1.07.00.

4.2.14 Changes of 12-bit A/D Converter (S12ADC)

When the 12-bit A/D converter (S12ADC) is used in the group scan mode, an A/D conversion end interrupt or group B A/D conversion end interrupt will be generated immediately after the scan has started, if further scanning is started by calling the function void R_S12ADn_Start(void) after the function void R_S12ADn_Stop(void) has been executed.

This issue has been corrected in Code Generator for RX V1.09.00.

4.2.15 Changes of 12-bit D/A Converter (R12DA)

The code output for the function void R_R12DAx_Start(void) has an error, so the output amplifier may not operate correctly in use with the 12-bit D/A converter (R12DA).

This issue has been corrected in Code Generator for RX V1.09.00.

4.2.16 Changes of bus settings

An error will occur for A16, A17, A21, A22, A23 and code will not be generated after the external address bus signals A16 to A23 are set to PC0, PC1, P71, P72, P74, and PC5 to PC7 because PC2 to PC4 are used for peripheral functions other than address signals.

This issue has been corrected in Code Generator for RX V1.09.00.

4.2.17 Changes of Code Generated for the Clock Generation Circuit (HOCO Operation)

Generated code has an error when settings are for the high-speed on-chip oscillator (HOCO) to be used as the clock circuit.

To set the high-speed on-chip oscillator for operation, set the high-speed on-chip oscillator control register (HOCOCCR) after setting the high-speed on-chip oscillator wait control register (HOCOWTCR).

This issue has been corrected in Code Generator for RX V1.09.00.

4.2.18 Changes of complementary PWM mode setting of the MTU

An error appears in the generated code when complementary PWM mode is selected for MTU3 of the multi-function timer pulse unit (MTU).

A build error occurs since an undefined symbol is used when the timer counter register (TCNT) of MTU3 is set in the function void R_MTU2_Create (void), which is in the r_cg_mtu2.c file.

The dead time is set in the timer counter register (TCNT) of MTU3.

This issue has been corrected in Code Generator for RX V1.09.00.

4.2.19 Changes of interrupt when the MTU is set for complementary PWM mode

The code output for the following functions is erroneous when the use of the multi-function timer pulse unit 3 of the RX23T group or the multi-function timer pulse unit 2 of other groups in complementary PWM mode is selected.

- RX23T group

- void R_MTU3_Create(void) function in the r_cg_mtu3.c source file

- Other than the RX23T group

- void R_MTU2_Create(void) function in the r_cg_mtu2.c source file

The code for setting the interrupt priority level of the following interrupts, which should be set up in the above functions, is not output, so they are not generated even if they are set as "enabled".

- Compare match interrupt (TGIA4)

- Compare match interrupt (TGIB4)

- Underflow interrupt (TCIV4)

This issue has been corrected in Code Generator for RX V1.09.00.

4.2.20 Changes of setting of the data transfer controller (DTC)

If you make settings for peripheral functions and handle projects with the following procedure, settings that have already been made for the data transfer controller (DTC) are returned to their initial states.

- (1) Set the DTC and close the project after saving it.

- (2) Open the project in (1) again, and set the peripheral function after opening the setting screen for the peripheral function other than DTC (e.g., an 8-bit timer).

- (3) Close the project after saving it.

- (4) Open the project which was set in steps (1) to (3) again.

This issue has been corrected in Code Generator for RX V1.09.00.

4.2.21 Changes of using the MPC to Select Functions of the PAn Pins

An error in handling of the pin function selection bits (PSEL [4:0]) of the PAn pin function control register (PAnPFS, n= 0 to 7) of the multi-function pin controller (MPC) means that the code for selecting the following peripheral functions does not select the correct functions.

- Multifunction Timer Pulse Unit 2 (MTU2)

 - MTU1 MTIOC1B pin

 - MTU2 MTIOC2A pin, MTIOC2B pin

- 8-bit timer (TMR)

 - TMR0 external reset pin (TMRIO)

 - TMR3 external reset pin (TMCIO)

This issue has been corrected in Code Generator for RX V1.09.00.

4.2.22 Changes of Clock Edge Select of MTU

When PCLK is selected of MTU Clock source for counting, Clock Edge Select can't be selected.

This issue has been corrected in Code Generator for RX V1.09.00.

4.2.23 Changes of triggers to start conversion by the A/D converter of MTU

When the triggers to start conversion by the A/D converter is selected, the source program may not be generated by the error.

This issue has been corrected in Code Generator for RX V1.09.00.

4.2.24 Output code changes of POE

When MTIOC0B pin is set to MTIOC0B P93 Pin High-Impedance of POE, the generated code has an error. Modify the output code in the way shown below.

Before modification:

```
POE.POECR1.BYTE = _40_POE_MTIOC0CPINP93_ENABLE | _0000_POE_POECR1_DEFAULT;
```

After modification:

```
POE.POECR1.BYTE = _40_POE_MTIOC0BPINP93_ENABLE | _0000_POE_POECR1_DEFAULT;
```

This issue has been corrected in Code Generator for RX V1.09.00.

4.2.25 Changes of I/O Ports function

PORTJ cannot be used with open-drain setting. (Port J pins are not present in 100 or fewer pin package products of the RX230 and RX231 group.)

This issue has been corrected in Code Generator for RX V1.09.00.

4.2.26 Changes of setting of pins, which are multiplexed with PORTH

When selected the products of RX230 group, cannot be setting of pins; PH0/CACREF, PH1/IRQ0/TMO0, PH2/IRQ1/TMRIO, PH3/TMCIO.

(I/O Port settings and the peripheral functions, which are multiplexed port H.)

This issue has been corrected in Code Generator for RX V1.09.00.

4.2.27 Changes of display of Pin View

When the following products is selected, Pin View is not displayed.

RX231 group

48pin:R5F52315CxNE, R5F52316CxNE, R5F52315CxFL, R5F52316CxFL

64pin:R5F52315CxND, R5F52316CxND, R5F52315CxFM, R5F52316CxFM, R5F52315CxLF,
R5F52316CxLF

100pin:R5F52315CxLA, R5F52316CxLA, R5F52315CxFP, R5F52316CxFP

This issue has been corrected in Code Generator for RX V1.09.00.

Chapter 5. Cautions

This chapter describes cautions for using the Code Generator for RX V1.09.00.

5.1 Cautions List

No.	Description	Corresponds of code generation								
		RX110	RX111	RX113	RX130	RX230, RX231	RX23T	RX24T	RX64M	RX71M
		V1.05.02.01	V1.05.02.01	V1.02.02.01	V1.00.00.02	V1.00.01.01	V1.00.01.01	V1.00.00.03	V1.02.02.01	V1.00.03.01
1	Cautions of USB functions	/	○	○	/	○	/	/	○	○
2	Cautions of Low Power Consumption functions	○	○	○	○	○	○	○	○	○
3	Cautions of SCI (Asynchronous Mode) functions	○	○	○	○	○	○	○	○	○
4	Cautions of User boot mode	/	/	/	/	/	/	/	○	○
5	Cautions of extension code and multi-master of RIIC	/	/	○	○	○	○	○	○	○
6	Cautions of combination with the real-time OS for RX family	○	○	○	○	○	○	○	○	○
7	Cautions of the fast interrupt	/	/	○	○	○	○	○	/	/
8	Caution of compatibility problem	/	/	○	/	/	/	/	○	○
9	Caution of display of Pin View (TMR)	/	/	○	○	○	○	○	○	○

○: Correspondence, /: Outside of function

5.2 Cautions Details

5.2.1 Cautions of USB functions

The code generator is not supporting the USB functions.

5.2.2 Cautions of Low Power Consumption functions

The code generator is not supporting the Low Power Consumption functions.

5.2.3 Cautions of SCI (Asynchronous Mode) functions

The code generator is not supporting transfer rate clock input from the MTU or TMR.

5.2.4 Cautions of User boot mode

The code generator is not supporting User boot mode.

5.2.5 Cautions of extension code and multi-master of RIIC

The code generator is not supporting the extension code, multi-master function of RIIC.

[Workaround] There is no workaround.

5.2.6 Cautions of combination with the real-time OS for RX family

The code generator can not use with the project for the real-time OS for RX family (RI600PX, RI600V4).

5.2.7 Cautions of the fast interrupt

When setting the fast interrupt, can not use the fast interrupt function even though can make setting interrupt sources for fast interrupt.

[Workaround] Modify the symbol definitions to the vector number from the vector name, in r_cg_userdefine.h as described below.

Before modification: In the case below, the output code was generated with the fast interrupt setting as MTU1(TGIB1 vect = 122)

```
#define FAST_INTERRUPT_VECTOR TGIB1
```

After the modification: Again with the fast interrupt setting as MTU1(TGIB vect = 122)

```
#define FAST_INTERRUPT_VECTOR 122
```

5.2.8 Caution of compatibility problem

The following peripheral function might be changed, due to compatibility problem.

RX113 groups

If you change setting for the Display Data Area Control from LCD Controller/Driver, setting that already been made for the Display Data Area Control setting might be returned to their initial states (Display Data Area Control).

RX64M groups

If you make setting for any one of SCIFA8, SCIFA9, SCIF11 and don't make setting for SCIFA10, the interrupt handler code for SCIFA10 might be generated.

RX71M groups

If you change settings for the high-speed on-chip oscillator (HOCO) from the clock circuit, settings that have already been made for the HOCO frequency setting might be returned to their initial states (16MHz).

RX71M groups

If you change output settings for PO28 of the Group 7 pulse output from the Programmable Pulse Generator (PPG), the generated code has an error. Modify the output code in the way shown below.

Before modification:

```
/* Set PO28 pin */  
  
MPC.PB4PFS.BYTE = 0x06U;  
  
PORTB.PDR.BYTE &= 0xEFU;  
  
PORTB.PMR.BYTE |= 0x10U;
```

After modification:

```
/* Set PO28 pin */  
  
MPC.PB4PFS.BYTE = 0x06U;  
  
PORTB.PMR.BYTE |= 0x10U;
```

[Workaround] When updating the version of the code generator, please use make sure that there is no unintended changes to the peripheral function settings.

5.2.9 Caution of display of Pin View (TMR)

If you make settings for 8-bit Timer and handle projects with the following procedure, Macro List Window of pin information is not displayed.

- (1) Set the 8-bit Timer and close the project after saving it.
- (2) Open the project in (1) again, and open the Macro List Window of pin information.

[Workaround] When updating the version of the code generator, please use make sure that there is no unintended changes to the peripheral function settings.

Chapter 6. About API added and changed

6.1 About API added for RX113

API Function Name	Function
R_CMPB_Create	Performs initialization necessary to control the Comparator B.
R_CMPB_Create_UserInit	Performs user-defined initialization relating to the Comparator B.
r_cmpb_cmpbn_interrupt	Performs processing in response to the comparator B interrupt.
R_CMPBn_Start	Starts comparison for analog input voltage.
R_CMPBn_Stop	Ends comparison for analog input voltage.

Comparator B (CMPB)

R_CMPB_Create

Performs initialization necessary to control the Comparator B.

[File Name]

r_cg_cmpb.c

[Syntax]

```
void R_CMPB_Create ( void );
```

[Argument(s)]

None.

[Return value]

None.

R_CMPB_Create_UserInit

Performs user-defined initialization relating to the Comparator B.

Remark This API function is called as the R_CMPB_Create callback routine.

[File Name]

r_cg_cmpb_user.c

[Syntax]

```
void R_CMPB_Create_UserInit ( void );
```

[Argument(s)]

None.

[Return value]

None.

r_cmpb_cmpbn_interrupt

Performs processing in response to the comparator B interrupt.

Remark This API function is called to run interrupt processing for the comparator Bn interrupt, which is generated when the comparison result changes at this time.

[File Name]

r_cg_cmpb_user.c

[Syntax]

```
Void r_cmpb_cmpbn_interrupt ( void );
```

Remark n is the channel number.

[Argument(s)]

None.

[Return value]

None.

R_CMPB n _Start

Starts comparison for analog input voltage

Starts D/A conversion.

[File Name]

r_cg_cmpb.c

[Syntax]

```
void R_CMPB $n$ _Start ( void );
```

Remark n is the channel number.

[Argument(s)]

None.

[Return value]

None.

R_CMPB n _Stop

Ends comparison for analog input voltage.

[File Name]

r_cg_cmpb.c

[Syntax]

```
void R_CMPB $n$ _Stop ( void );
```

Remark n is the channel number.

[Argument(s)]

None.

[Return value]

None.

6.2 About API added for RX23T

API Function Name	Function
R_CMPC_Create	Performs initialization necessary to control the Comparator C.
R_CMPC_Create_UserInit	Performs user-defined initialization relating to the Comparator C.
r_cmpc_cmpcn_interrupt	Performs processing in response to the comparator C interrupt.
R_CMPCn_Start	Starts comparison for analog input voltage.
R_CMPCn_Stop	Ends comparison for analog input voltage.

Comparator C (CMPC)

R_CMPC_Create

Performs initialization necessary to control the Comparator C.

[File Name]

r_cg_cmpc.c

[Syntax]

```
void R_CMPC_Create ( void );
```

[Argument(s)]

None.

[Return value]

None.

R_CMPC_Create_UserInit

Performs user-defined initialization relating to the Comparator C.

Remark This API function is called as the R_CMPC_Create callback routine.

[File Name]

r_cg_cmpc_user.c

[Syntax]

```
void R_CMPC_Create_UserInit ( void );
```

[Argument(s)]

None.

[Return value]

None.

r_cmpc_cmpcn_interrupt

Performs processing in response to the comparator C interrupt.

Remark This API function is called to run interrupt processing for the comparator *Cn* interrupt, which is generated when the comparison result changes at this time.

[File Name]

r_cg_cmpc_user.c

[Syntax]

```
Void r_cmpc_cmpcn_interrupt ( void );
```

Remark *n* is the channel number.

[Argument(s)]

None.

[Return value]

None.

R_CMPCn_Start

Starts comparison for analog input voltage

Starts D/A conversion.

[File Name]

r_cg_cmpc.c

[Syntax]

```
void R_CMPCn_Start ( void );
```

Remark *n* is the channel number.

[Argument(s)]

None.

[Return value]

None.

R_CMPCn_Stop

Ends comparison for analog input voltage.

[File Name]

r_cg_cmpc.c

[Syntax]

```
void R_CMPCn_Stop ( void );
```

Remark *n* is the channel number.

[Argument(s)]

None.

[Return value]

None.

Notice

1. Descriptions of circuits, software and other related information in this document are provided only to illustrate the operation of semiconductor products and application examples. You are fully responsible for the incorporation of these circuits, software, and information in the design of your equipment. Renesas Electronics assumes no responsibility for any losses incurred by you or third parties arising from the use of these circuits, software, or information.
2. Renesas Electronics has used reasonable care in preparing the information included in this document, but Renesas Electronics does not warrant that such information is error free. Renesas Electronics assumes no liability whatsoever for any damages incurred by you resulting from errors in or omissions from the information included herein.
3. Renesas Electronics does not assume any liability for infringement of patents, copyrights, or other intellectual property rights of third parties by or arising from the use of Renesas Electronics products or technical information described in this document. No license, express, implied or otherwise, is granted hereby under any patents, copyrights or other intellectual property rights of Renesas Electronics or others.
4. You should not alter, modify, copy, or otherwise misappropriate any Renesas Electronics product, whether in whole or in part. Renesas Electronics assumes no responsibility for any losses incurred by you or third parties arising from such alteration, modification, copy or otherwise misappropriation of Renesas Electronics product.
5. Renesas Electronics products are classified according to the following two quality grades: "Standard" and "High Quality". The recommended applications for each Renesas Electronics product depends on the product's quality grade, as indicated below.
"Standard": Computers; office equipment; communications equipment; test and measurement equipment; audio and visual equipment; home electronic appliances; machine tools; personal electronic equipment; and industrial robots etc.
"High Quality": Transportation equipment (automobiles, trains, ships, etc.); traffic control systems; anti-disaster systems; anti-crime systems; and safety equipment etc.
Renesas Electronics products are neither intended nor authorized for use in products or systems that may pose a direct threat to human life or bodily injury (artificial life support devices or systems, surgical implantations etc.), or may cause serious property damages (nuclear reactor control systems, military equipment etc.). You must check the quality grade of each Renesas Electronics product before using it in a particular application. You may not use any Renesas Electronics product for any application for which it is not intended. Renesas Electronics shall not be in any way liable for any damages or losses incurred by you or third parties arising from the use of any Renesas Electronics product for which the product is not intended by Renesas Electronics.
6. You should use the Renesas Electronics products described in this document within the range specified by Renesas Electronics, especially with respect to the maximum rating, operating supply voltage range, movement power voltage range, heat radiation characteristics, installation and other product characteristics. Renesas Electronics shall have no liability for malfunctions or damages arising out of the use of Renesas Electronics products beyond such specified ranges.
7. Although Renesas Electronics endeavors to improve the quality and reliability of its products, semiconductor products have specific characteristics such as the occurrence of failure at a certain rate and malfunctions under certain use conditions. Further, Renesas Electronics products are not subject to radiation resistance design. Please be sure to implement safety measures to guard them against the possibility of physical injury, and injury or damage caused by fire in the event of the failure of a Renesas Electronics product, such as safety design for hardware and software including but not limited to redundancy, fire control and malfunction prevention, appropriate treatment for aging degradation or any other appropriate measures. Because the evaluation of microcomputer software alone is very difficult, please evaluate the safety of the final products or systems manufactured by you.
8. Please contact a Renesas Electronics sales office for details as to environmental matters such as the environmental compatibility of each Renesas Electronics product. Please use Renesas Electronics products in compliance with all applicable laws and regulations that include the inclusion or use of controlled substances, including without limitation, the EU RoHS Directive. Renesas Electronics assumes no liability for damages or losses occurring as a result of your noncompliance with applicable laws and regulations.
9. Renesas Electronics products and technology may not be used for or incorporated into any products or systems whose manufacture, use, or sale is prohibited under any applicable domestic or foreign laws or regulations. You should not use Renesas Electronics products or technology described in this document for any purpose relating to military applications or use by the military, including but not limited to the development of weapons of mass destruction. When exporting the Renesas Electronics products or technology described in this document, you should comply with the applicable export control laws and regulations and follow the procedures required by such laws and regulations.
10. It is the responsibility of the buyer or distributor of Renesas Electronics products, who distributes, disposes of, or otherwise places the product with a third party, to notify such third party in advance of the contents and conditions set forth in this document, Renesas Electronics assumes no responsibility for any losses incurred by you or third parties as a result of unauthorized use of Renesas Electronics products.
11. This document may not be reproduced or duplicated in any form, in whole or in part, without prior written consent of Renesas Electronics.
12. Please contact a Renesas Electronics sales office if you have any questions regarding the information contained in this document or Renesas Electronics products, or if you have any other inquiries.

(Note 1) "Renesas Electronics" as used in this document means Renesas Electronics Corporation and also includes its majority-owned subsidiaries.

(Note 2) "Renesas Electronics product(s)" means any product developed or manufactured by or for Renesas Electronics.



SALES OFFICES

Renesas Electronics Corporation

<http://www.renesas.com>

Refer to "http://www.renesas.com/" for the latest and detailed information.

Renesas Electronics America Inc.

2801 Scott Boulevard Santa Clara, CA 95050-2549, U.S.A.
Tel: +1-408-588-6000, Fax: +1-408-588-6130

Renesas Electronics Canada Limited

9251 Yonge Street, Suite 8309 Richmond Hill, Ontario Canada L4C 9T3
Tel: +1-905-237-2004

Renesas Electronics Europe Limited

Dukes Meadow, Millboard Road, Bourne End, Buckinghamshire, SL8 5FH, U.K
Tel: +44-1628-585-100, Fax: +44-1628-585-900

Renesas Electronics Europe GmbH

Arcadiastrasse 10, 40472 Düsseldorf, Germany
Tel: +49-214-6503-0, Fax: +49-214-6503-1327

Renesas Electronics (China) Co., Ltd.

Room 1709, Quantum Plaza, No.27 ZhichunLu Haidian District, Beijing 100191, P.R.China
Tel: +86-10-8235-1155, Fax: +86-10-8235-7679

Renesas Electronics (Shanghai) Co., Ltd.

Unit 301, Tower A, Central Towers, 555 Langao Road, Putuo District, Shanghai, P. R. China 200333
Tel: +86-21-2226-0888, Fax: +86-21-2226-0999

Renesas Electronics Hong Kong Limited

Unit 1601-1611, 16/F., Tower 2, Grand Century Place, 193 Prince Edward Road West, Mongkok, Kowloon, Hong Kong
Tel: +852-2265-6688, Fax: +852 2886-9022

Renesas Electronics Taiwan Co., Ltd.

13F, No. 363, Fu Shing North Road, Taipei 10543, Taiwan
Tel: +886-2-8175-9600, Fax: +886 2-8175-9670

Renesas Electronics Singapore Pte. Ltd.

80 Bendemeer Road, Unit #06-02 Hyflux Innovation Centre, Singapore 339949
Tel: +65-6213-0200, Fax: +65-6213-0300

Renesas Electronics Malaysia Sdn.Bhd.

Unit 1207, Block B, Menara Amcorp, Amcorp Trade Centre, No. 18, Jln Persiaran Barat, 46050 Petaling Jaya, Selangor Darul Ehsan, Malaysia
Tel: +60-3-7955-9390, Fax: +60-3-7955-9510

Renesas Electronics India Pvt. Ltd.

No.777C, 100 Feet Road, HALII Stage, Indiranagar, Bangalore, India
Tel: +91-80-67208700, Fax: +91-80-67208777

Renesas Electronics Korea Co., Ltd.

12F., 234 Teheran-ro, Gangnam-Gu, Seoul, 135-080, Korea
Tel: +82-2-558-3737, Fax: +82-2-558-5141